

Data Path : Z:\HPCHEM1\BNA G\DATA\BG060916\
 Data File : BG022260.D
 Acq On : 9 Jun 2016 9:15
 Operator : UM/SJ
 Sample : H3402-06 2X
 Misc :
 ALS Vial : 7 Sample Multiplier: 1

Instrument :
 BNA_G
 ClientSampled :
 SS-41

Integration Parameters: rteint.p
 Integrator: RTE
 Smoothing : ON Filtering: 5
 Sampling : 1 Min Area: 3 % of largest Peak
 Start Thrs: 0.2 Max Peaks: 100
 Stop Thrs : 0 Peak Location: TOP

If leading or trailing edge < 100 prefer < Baseline drop else tangent >
 Peak separation: 5

Method : Z:\HPCHEM1\BNA G\METHODS\8270-BG060616.M
 Title : ASP BNA STANDARDS FOR 5 POINT CALIBRATION

Signal : TIC

peak #	R.T. min	first scan	max scan	last scan	PK TY	peak height	corr. area	corr. % max.	% of total
1	2.985	19	25	38	rVB	510951	815238	64.80%	4.955%
2	5.182	391	399	408	rBV	24803	47988	3.81%	0.292%
3	5.664	474	481	500	rBV	245292	473774	37.66%	2.880%
4	7.274	748	755	775	rBV	285530	573952	45.62%	3.489%
5	7.650	809	819	827	rBV	301258	602439	47.89%	3.662%
6	8.114	891	898	908	rBV	104695	209740	16.67%	1.275%
7	8.443	944	954	962	rBV	231818	462516	36.76%	2.811%
8	9.289	1089	1098	1115	rBV	157979	344480	27.38%	2.094%
9	10.934	1371	1378	1384	rBV	180797	376768	29.95%	2.290%
10	10.987	1384	1387	1395	rVB	35628	61916	4.92%	0.376%
11	12.591	1654	1660	1665	rBV2	12162	22419	1.78%	0.136%
12	12.803	1689	1696	1705	rVB2	11016	20258	1.61%	0.123%
13	13.367	1785	1792	1810	rBV	626749	1077284	85.63%	6.548%
14	14.066	1905	1911	1916	rBV3	8528	15402	1.22%	0.094%
15	14.189	1926	1932	1941	rVV	55400	87055	6.92%	0.529%
16	14.748	2015	2027	2033	rBV2	310662	558214	44.37%	3.393%
17	14.806	2033	2037	2044	rVB	48772	83668	6.65%	0.509%
18	15.147	2086	2095	2102	rBV	22946	45139	3.59%	0.274%
19	15.793	2198	2205	2215	rBV	52191	94701	7.53%	0.576%
20	16.081	2250	2254	2258	rVB	8750	12878	1.02%	0.078%
21	16.234	2273	2280	2292	rBV	371658	630283	50.10%	3.831%
22	16.422	2308	2312	2317	rBV6	8246	16575	1.32%	0.101%
23	16.798	2364	2376	2379	rBV6	8726	24084	1.91%	0.146%
24	17.015	2405	2413	2417	rBV7	6465	17559	1.40%	0.107%
25	17.145	2431	2435	2441	rBV3	9199	16109	1.28%	0.098%
26	17.215	2441	2447	2455	rVV6	12537	28683	2.28%	0.174%
27	17.309	2459	2463	2470	rVB	19690	33842	2.69%	0.206%
28	17.491	2485	2494	2497	rBV	345837	578450	45.98%	3.516%
29	17.533	2497	2501	2508	rVV	424973	695415	55.28%	4.227%
30	17.621	2510	2516	2523	rVB	90835	156855	12.47%	0.953%
31	17.897	2555	2563	2569	rBV2	31332	69770	5.55%	0.424%
32	18.361	2637	2642	2646	rBV	40690	68272	5.43%	0.415%
33	18.414	2646	2651	2657	rVB	55324	94531	7.51%	0.575%
34	18.490	2657	2664	2669	rBV3	21609	38099	3.03%	0.232%

Data Path : Z:\HPCHEM1\BNA G\DATA\BG060916\
 Data File : BG022260.D
 Acq On : 9 Jun 2016 9:15
 Operator : UM/SJ
 Sample : H3402-06 2X
 Misc :
 ALS Vial : 7 Sample Multiplier: 1

Instrument :
 BNA_G
 ClientSampleId :
 SS-41

Integration Parameters: rteint.p
 Integrator: RTE
 Smoothing : ON
 Sampling : 1
 Start Thrs: 0.2
 Stop Thrs : 0

Filtering: 5
 Min Area: 3 % of largest Peak
 Max Peaks: 100
 Peak Location: TOP

If leading or trailing edge < 100 prefer < Baseline drop else tangent >
 Peak separation: 5

Method : Z:\HPCHEM1\BNA G\METHODS\8270-BG060616.M
 Title : ASP BNA STANDARDS FOR 5 POINT CALIBRATION

35	18.561	2669	2676	2687	rVV4	73426	185115	14.71%	1.125%
36	18.855	2722	2726	2730	rVV	29471	45800	3.64%	0.278%
37	18.907	2730	2735	2742	rVB4	17268	32192	2.56%	0.196%
38	19.101	2757	2768	2772	rBV8	12321	33173	2.64%	0.202%
39	19.148	2772	2776	2779	rVV3	9643	14069	1.12%	0.086%
40	19.266	2791	2796	2800	rVV2	27178	47811	3.80%	0.291%
41	19.336	2803	2808	2815	rVV9	16298	46592	3.70%	0.283%
42	19.419	2815	2822	2830	rVV3	19711	45247	3.60%	0.275%
43	19.536	2835	2842	2848	rBV	568778	889515	70.71%	5.407%
44	19.630	2856	2858	2862	rVB3	12264	14383	1.14%	0.087%
45	19.683	2862	2867	2871	rBV3	9554	14820	1.18%	0.090%
46	19.759	2875	2880	2891	rVB2	52101	102354	8.14%	0.622%
47	19.894	2891	2903	2911	rBV	483741	919441	73.08%	5.589%
48	19.965	2911	2915	2922	rVB3	23319	42324	3.36%	0.257%
49	20.082	2928	2935	2941	rBV	864084	1258060	100.00%	7.647%
50	20.141	2941	2945	2951	rVB2	25243	42676	3.39%	0.259%
51	20.218	2951	2958	2964	rVB3	32924	87342	6.94%	0.531%
52	20.382	2975	2986	2992	rVB	75035	162908	12.95%	0.990%
53	20.482	2998	3003	3007	rBV2	59178	92925	7.39%	0.565%
54	20.541	3007	3013	3017	rVV2	39406	83224	6.62%	0.506%
55	20.576	3017	3019	3022	rVB3	14942	15219	1.21%	0.093%
56	20.682	3033	3037	3040	rBV2	27025	41006	3.26%	0.249%
57	20.723	3041	3044	3049	rVV2	29535	54351	4.32%	0.330%
58	20.793	3053	3056	3060	rVB3	28619	39736	3.16%	0.242%
59	21.152	3113	3117	3123	rVB2	26773	44063	3.50%	0.268%
60	21.334	3144	3148	3152	rBV3	28001	53244	4.23%	0.324%
61	21.375	3152	3155	3160	rVV2	44126	73873	5.87%	0.449%
62	21.434	3160	3165	3170	rVB3	29850	52512	4.17%	0.319%
63	21.763	3212	3221	3226	rBV2	390582	1061957	84.41%	6.455%
64	21.810	3226	3229	3241	rVB	191752	366377	29.12%	2.227%
65	21.968	3251	3256	3262	rVB	36961	68482	5.44%	0.416%
66	22.180	3288	3292	3299	rVB5	22923	49406	3.93%	0.300%
67	22.785	3391	3395	3399	rBV5	18323	30112	2.39%	0.183%
68	24.013	3595	3604	3623	rBV2	120592	643533	51.15%	3.912%
69	24.278	3644	3649	3656	rVB2	26673	61439	4.88%	0.373%
70	24.753	3722	3730	3740	rVB	74891	212134	16.86%	1.289%
71	24.906	3747	3756	3768	rBV	103847	327068	26.00%	1.988%

Data Path : Z:\HPCHEM1\BNA G\DATA\BG060916\
Data File : BG022260.D
Acq On : 9 Jun 2016 9:15
Operator : UM/SJ
Sample : H3402-06 2X
Misc :
ALS Vial : 7 Sample Multiplier: 1

Instrument :
BNA_G
ClientSampleId :
SS-41

Integration Parameters: rteint.p
Integrator: RTE
Smoothing : ON Filtering: 5
Sampling : 1 Min Area: 3 % of largest Peak
Start Thrs: 0.2 Max Peaks: 100
Stop Thrs : 0 Peak Location: TOP

If leading or trailing edge < 100 prefer < Baseline drop else tangent >
Peak separation: 5

Method : Z:\HPCHEM1\BNA G\METHODS\8270-BG060616.M
Title : ASP BNA STANDARDS FOR 5 POINT CALIBRATION

72	25.065	3771	3783	3792	rBV3	172744	580784	46.17%	3.530%
73	28.819	4415	4422	4423	rBV6	26849	48203	3.83%	0.293%
74	30.000	4620	4623	4625	rBV4	9287	13486	1.07%	0.082%

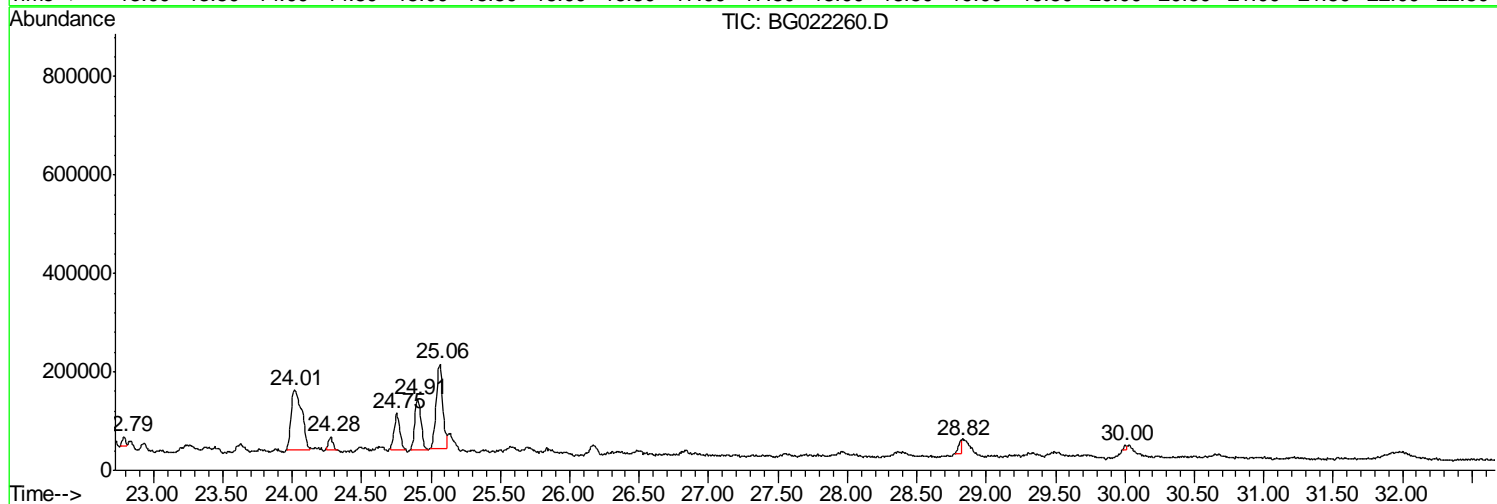
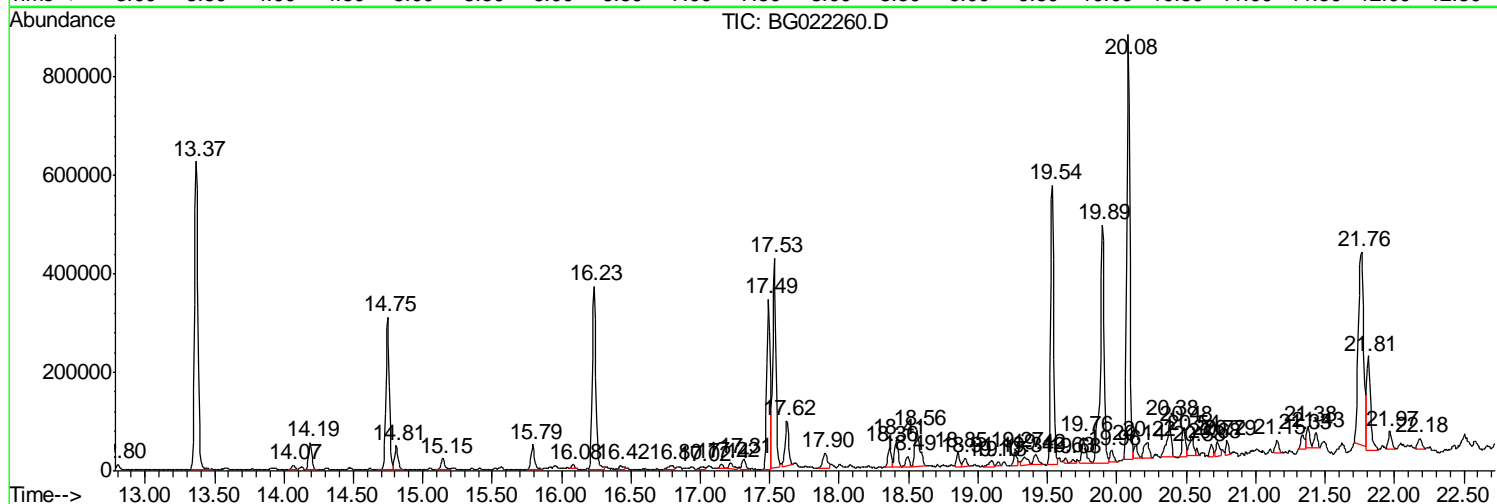
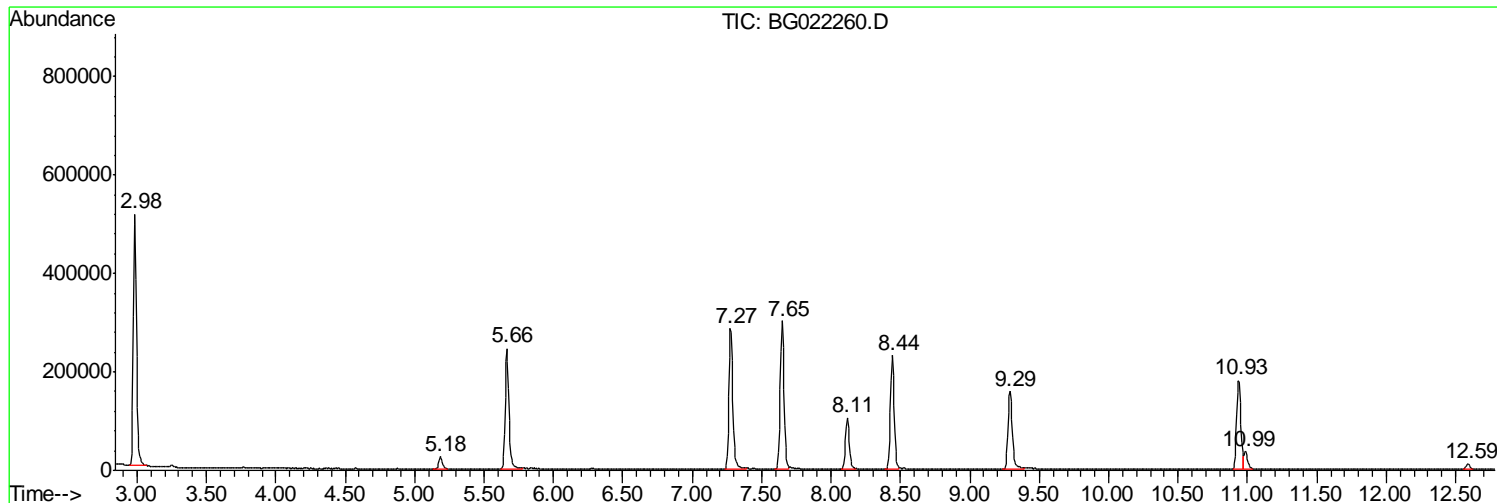
Sum of corrected areas: 16451312

Data Path : Z:\HPCHEM1\BNA G\DATA\BG060916\
 Data File : BG022260.D
 Acq On : 9 Jun 2016 9:15
 Operator : UM/SJ
 Sample : H3402-06 2X
 Misc :
 ALS Vial : 7 Sample Multiplier: 1

Instrument :
 BNA_G
 ClientSampled :
 SS-41

Quant Method : Z:\HPCHEM1\BNA G\METHODS\8270-BG060616.M
 Quant Title : ASP BNA STANDARDS FOR 5 POINT CALIBRATION

TIC Library : C:\DATABASE\NIST02.L
 TIC Integration Parameters: LSCINT.P



Data Path : Z:\HPCHEM1\BNA G\DATA\BG060916\
 Data File : BG022260.D
 Acq On : 9 Jun 2016 9:15
 Operator : UM/SJ
 Sample : H3402-06 2X
 Misc :
 ALS Vial : 7 Sample Multiplier: 1

Instrument :
 BNA_G
 ClientSampled :
 SS-41

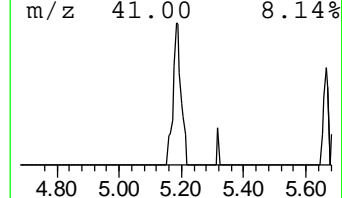
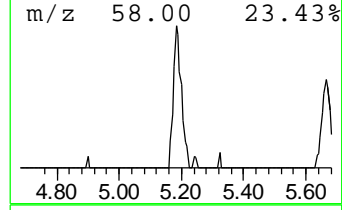
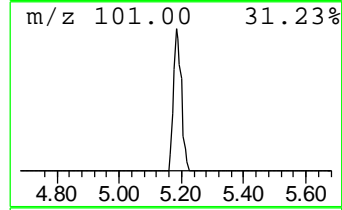
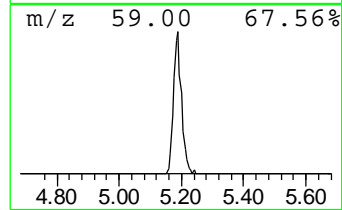
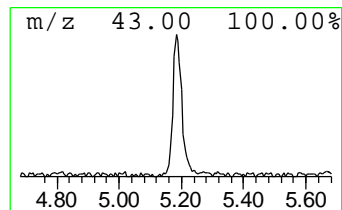
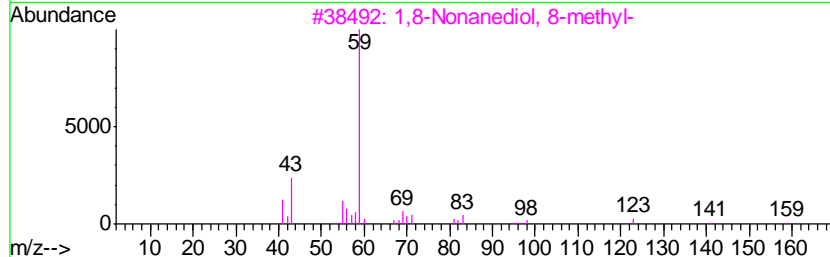
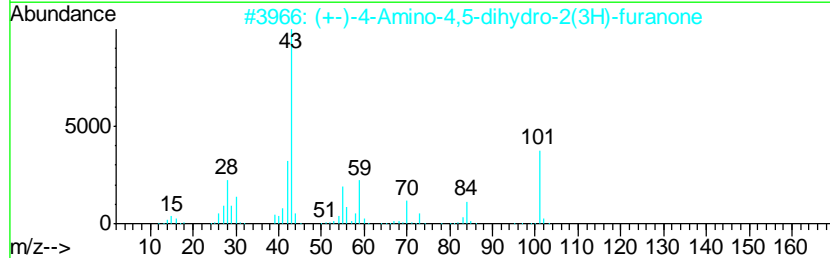
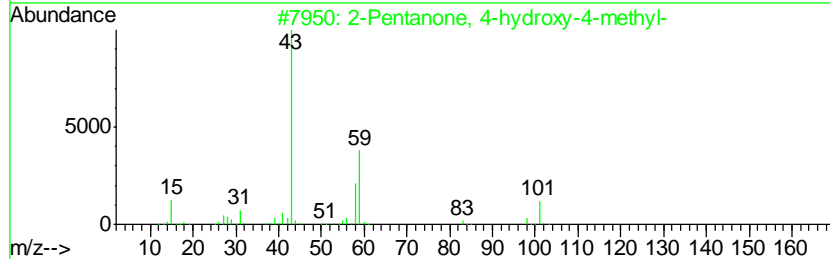
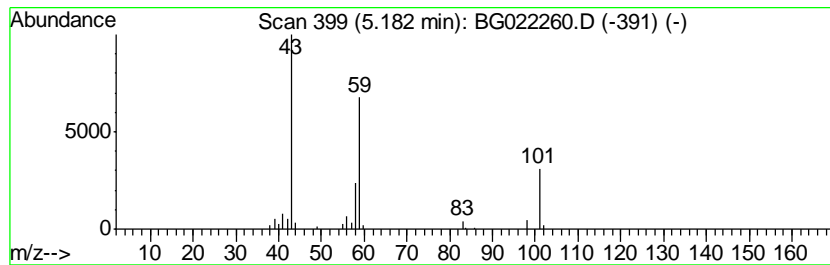
Quant Method : Z:\HPCHEM1\BNA G\METHODS\8270-BG060616.M
 Quant Title : ASP BNA STANDARDS FOR 5 POINT CALIBRATION

TIC Library : C:\DATABASE\NIST02.L
 TIC Integration Parameters: LSCINT.P

 Peak Number 2 2-Pentanone, 4-hydroxy-4-me... Concentration Rank 6

R.T.	EstConc	Area	Relative to ISTD	R.T.
5.18	4.58 ng	47988	1,4-Dichlorobenzene-d4	8.11

Hit#	of	Tentative ID	MW	MolForm	CAS#	Qual
1	5	2-Pentanone, 4-hydroxy-4-methyl-	116	C6H12O2	000123-42-2	53
2		(+)-4-Amino-4,5-dihydro-2(3H)-f...	101	C4H7NO2	016504-58-8	43
3		1,8-Nonanediol, 8-methyl-	174	C10H22O2	054725-73-4	17
4		Acetic acid, cyano-, 1,1-dimethy...	141	C7H11NO2	001116-98-9	12
5		2-Heptanone, 7,7-dichloro-	182	C7H12Cl2O	066241-43-8	10



Data Path : Z:\HPCHEM1\BNA G\DATA\BG060916\
 Data File : BG022260.D
 Acq On : 9 Jun 2016 9:15
 Operator : UM/SJ
 Sample : H3402-06 2X
 Misc :
 ALS Vial : 7 Sample Multiplier: 1

Instrument :
 BNA_G
 ClientSampled :
 SS-41

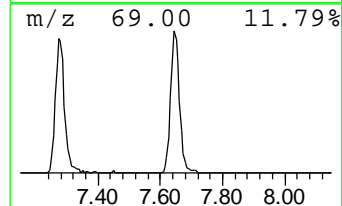
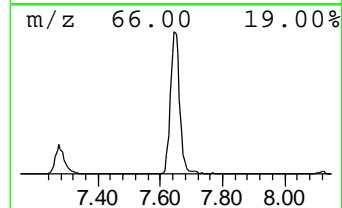
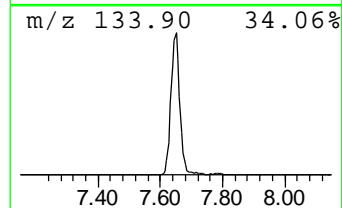
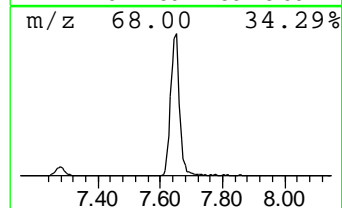
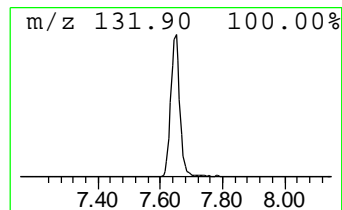
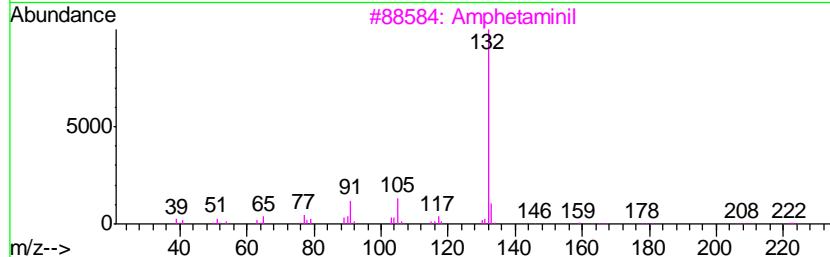
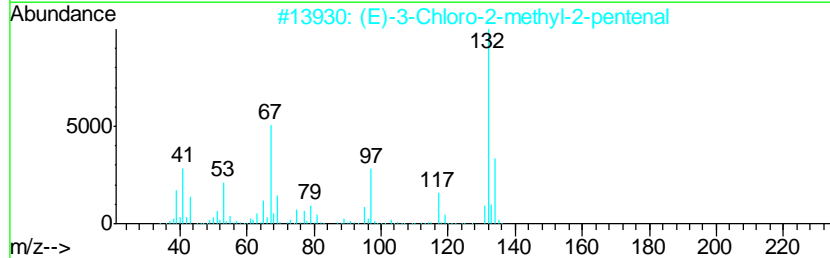
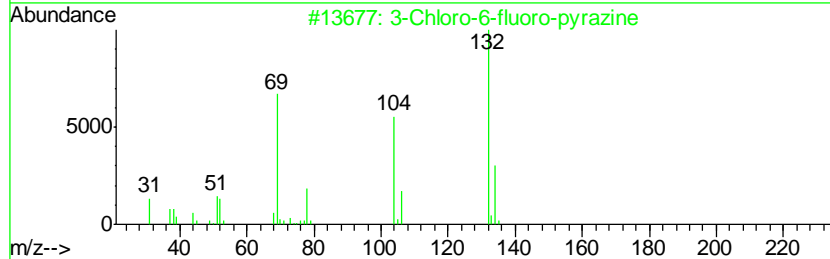
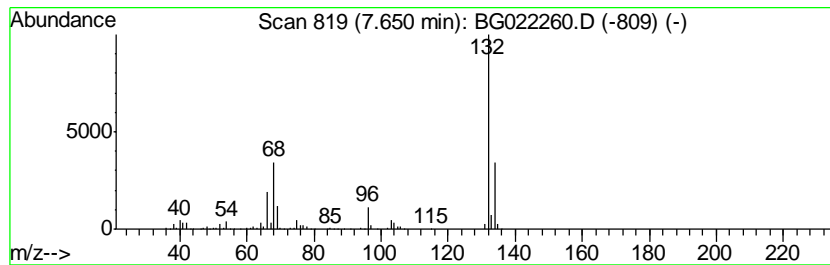
Quant Method : Z:\HPCHEM1\BNA G\METHODS\8270-BG060616.M
 Quant Title : ASP BNA STANDARDS FOR 5 POINT CALIBRATION

TIC Library : C:\DATABASE\NIST02.L
 TIC Integration Parameters: LSCINT.P

 Peak Number 3 3-Chloro-6-fluoro-pyrazine Concentration Rank 2

R.T.	EstConc	Area	Relative to ISTD	R.T.
7.65	57.45 ng	602439	1,4-Dichlorobenzene-d4	8.11

Hit#	of	Tentative ID	MW	MolForm	CAS#	Qual
1	5	3-Chloro-6-fluoro-pyrazine	132	C4H2ClFN2	1000146-10-7	50
2		(E)-3-Chloro-2-methyl-2-pentenal	132	C6H9ClO	031357-76-3	38
3		Amphetaminil	250	C17H18N2	017590-01-1	25
4		5-Fluoro-2-chloropyrimidine	132	C4H2ClFN2	062802-42-0	9
5		Xenon	132	Xe	007440-63-3	9



Data Path : Z:\HPCHEM1\BNA G\DATA\BG060916\
 Data File : BG022260.D
 Acq On : 9 Jun 2016 9:15
 Operator : UM/SJ
 Sample : H3402-06 2X
 Misc :
 ALS Vial : 7 Sample Multiplier: 1

Instrument :
 BNA_G
 ClientSampleID :
 SS-41

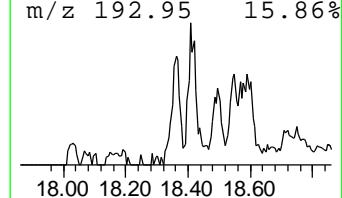
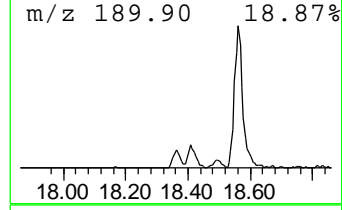
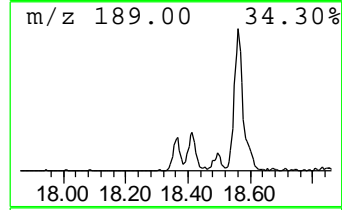
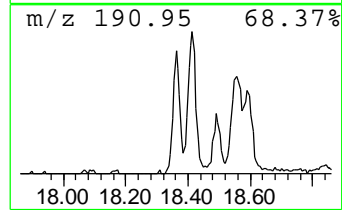
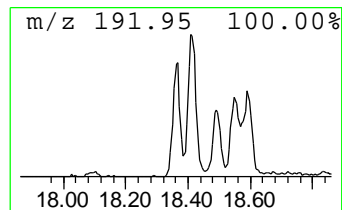
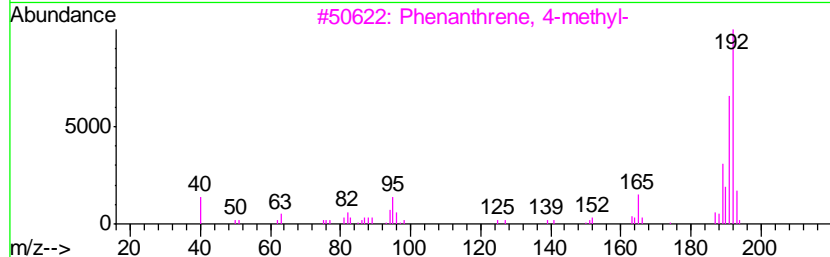
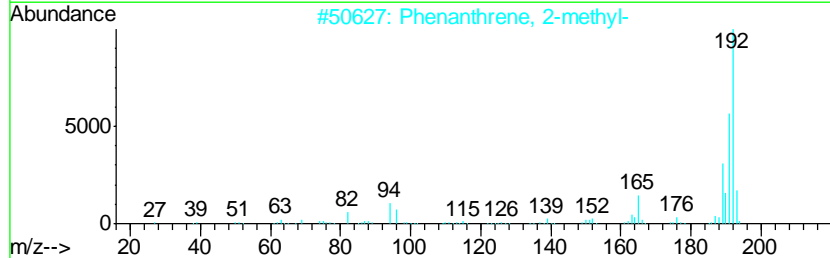
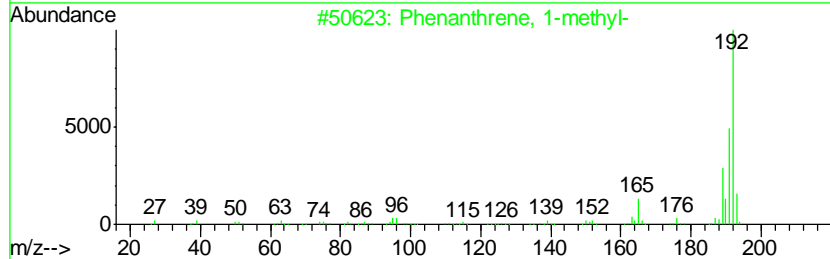
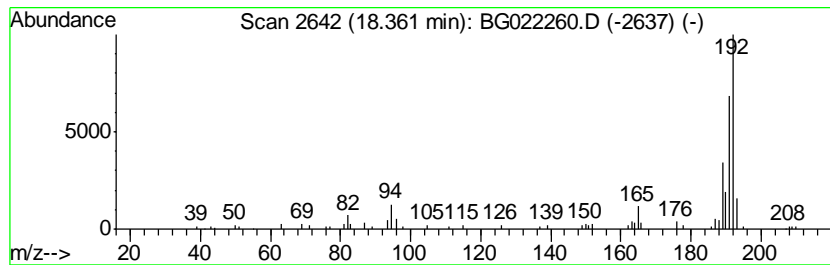
Quant Method : Z:\HPCHEM1\BNA G\METHODS\8270-BG060616.M
 Quant Title : ASP BNA STANDARDS FOR 5 POINT CALIBRATION

TIC Library : C:\DATABASE\NIST02.L
 TIC Integration Parameters: LSCINT.P

 Peak Number 5 Phenanthrene, 1-methyl- Concentration Rank 9

R.T.	EstConc	Area	Relative to ISTD	R.T.
18.36	2.36 ng	68272	Phenanthrene-d10	17.49

Hit#	of	Tentative ID	MW	MolForm	CAS#	Qual
1	5	Phenanthrene, 1-methyl-	192	C15H12	000832-69-9	94
2		Phenanthrene, 2-methyl-	192	C15H12	002531-84-2	93
3		Phenanthrene, 4-methyl-	192	C15H12	000832-64-4	93
4		Anthracene, 1-methyl-	192	C15H12	000610-48-0	93
5		1H-Cyclopropa[1]phenanthrene, 1a, ...	192	C15H12	000949-41-7	89



Data Path : Z:\HPCHEM1\BNA G\DATA\BG060916\
 Data File : BG022260.D
 Acq On : 9 Jun 2016 9:15
 Operator : UM/SJ
 Sample : H3402-06 2X
 Misc :
 ALS Vial : 7 Sample Multiplier: 1

Instrument :
 BNA_G
 ClientSampled :
 SS-41

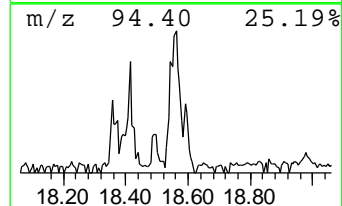
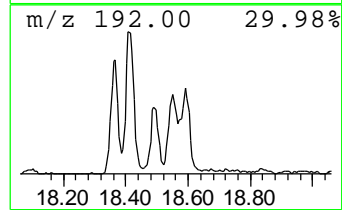
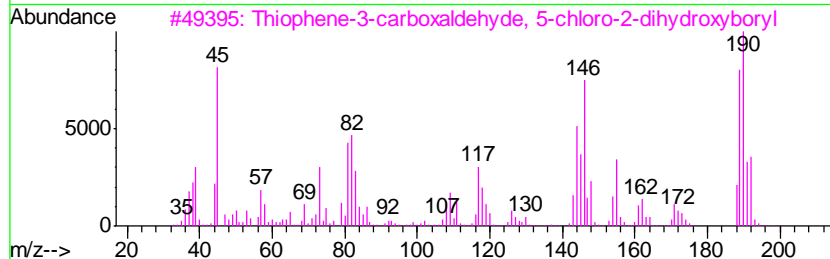
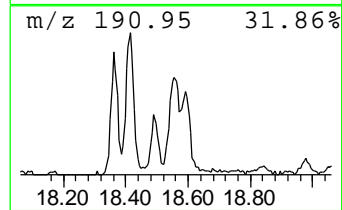
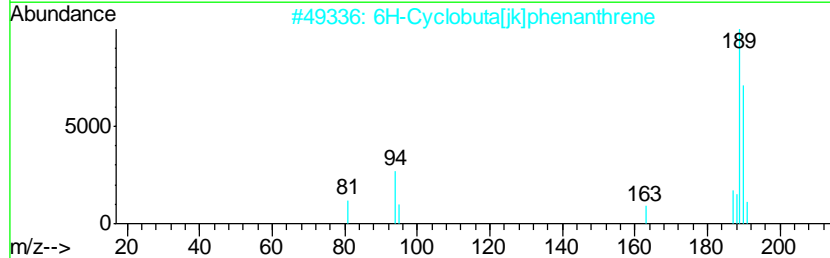
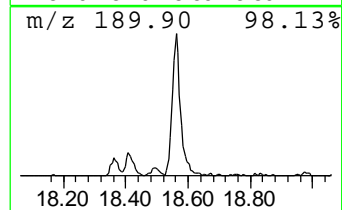
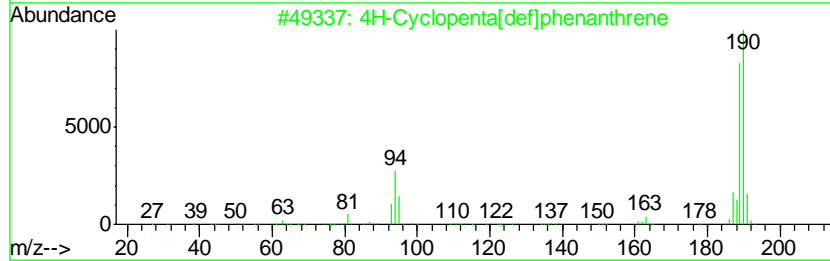
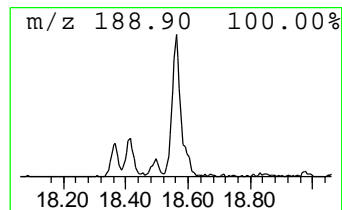
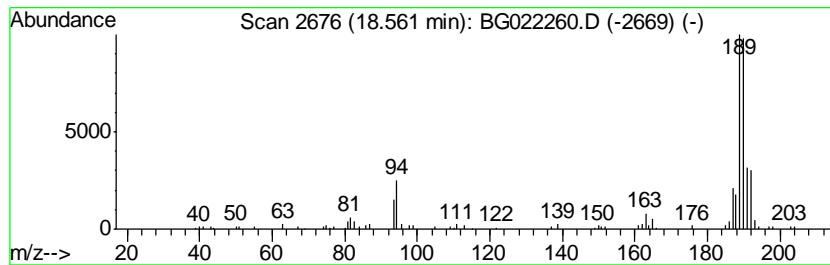
Quant Method : Z:\HPCHEM1\BNA G\METHODS\8270-BG060616.M
 Quant Title : ASP BNA STANDARDS FOR 5 POINT CALIBRATION

TIC Library : C:\DATABASE\NIST02.L
 TIC Integration Parameters: LSCINT.P

 Peak Number 7 4H-Cyclopenta[def]phenanthrene Concentration Rank 5

R.T.	EstConc	Area	Relative to ISTD	R.T.
18.56	6.40 ng	185115	Phenanthrene-d10	17.49

Hit#	of	Tentative ID	MW	MolForm	CAS#	Qual
1	5	4H-Cyclopenta[def]phenanthrene	190	C15H10	000203-64-5	87
2		6H-Cyclobuta[jk]phenanthrene	190	C15H10	083469-43-6	72
3		Thiophene-3-carboxaldehyde, 5-ch...	190	C5H4BClO3S	036155-87-0	52
4		2,2'-Bis(4,5-dimethylimidazole)	190	C10H14N4	069286-06-2	45
5		4,4'-Difluorobiphenyl	190	C12H8F2	000398-23-2	23



Data Path : Z:\HPCHEM1\BNA G\DATA\BG060916\
 Data File : BG022260.D
 Acq On : 9 Jun 2016 9:15
 Operator : UM/SJ
 Sample : H3402-06 2X
 Misc :
 ALS Vial : 7 Sample Multiplier: 1

Instrument :
 BNA_G
 ClientSampled :
 SS-41

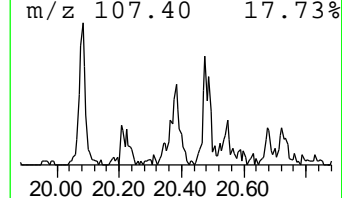
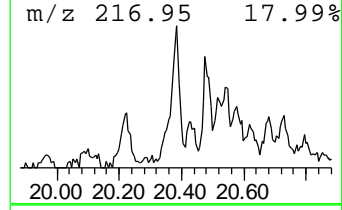
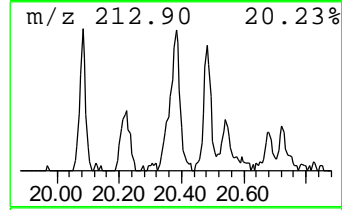
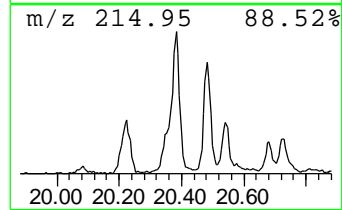
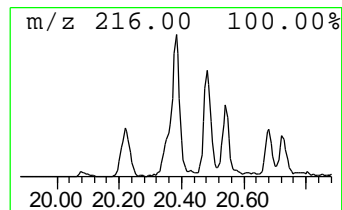
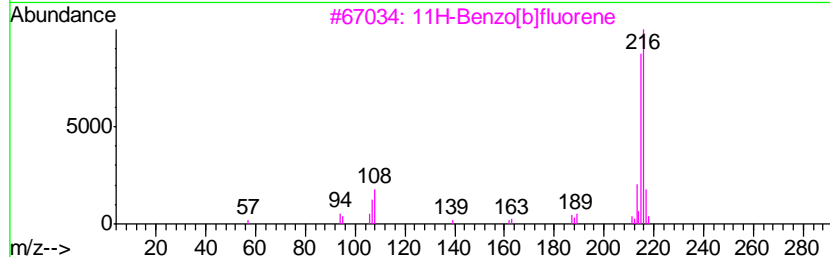
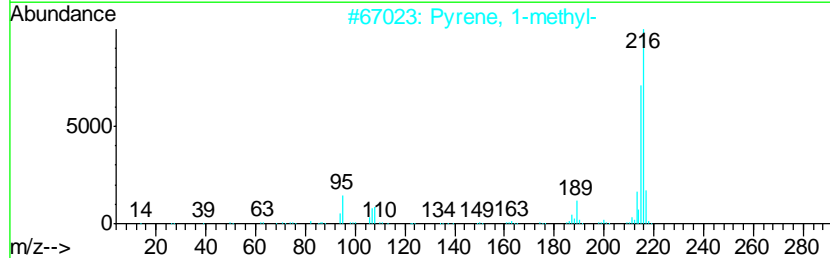
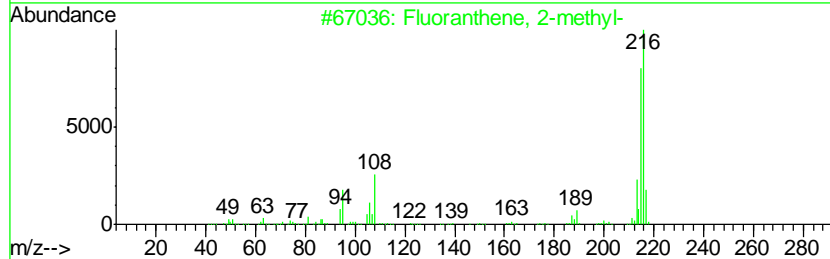
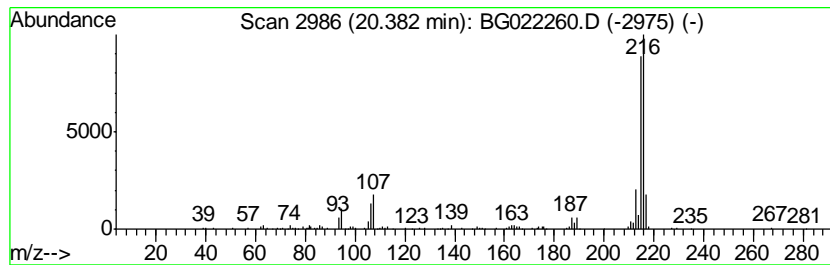
Quant Method : Z:\HPCHEM1\BNA G\METHODS\8270-BG060616.M
 Quant Title : ASP BNA STANDARDS FOR 5 POINT CALIBRATION

TIC Library : C:\DATABASE\NIST02.L
 TIC Integration Parameters: LSCINT.P

 Peak Number 8 Fluoranthene, 2-methyl- Concentration Rank 8

R.T.	EstConc	Area	Relative to ISTD	R.T.
20.38	3.07 ng	162908	Chrysene-d12	21.76

Hit#	of	Tentative ID	MW	MolForm	CAS#	Qual
1	5	Fluoranthene, 2-methyl-	216	C17H12	033543-31-6	95
2		Pyrene, 1-methyl-	216	C17H12	002381-21-7	94
3		11H-Benzo[b]fluorene	216	C17H12	000243-17-4	93
4		11H-Benzo[a]fluorene	216	C17H12	000238-84-6	91
5		7H-Benzo[c]fluorene	216	C17H12	000205-12-9	81



Data Path : Z:\HPCHEM1\BNA G\DATA\BG060916\
 Data File : BG022260.D
 Acq On : 9 Jun 2016 9:15
 Operator : UM/SJ
 Sample : H3402-06 2X
 Misc :
 ALS Vial : 7 Sample Multiplier: 1

Instrument :
 BNA_G
 ClientSampleID :
 SS-41

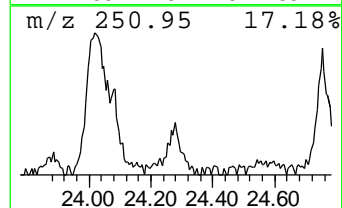
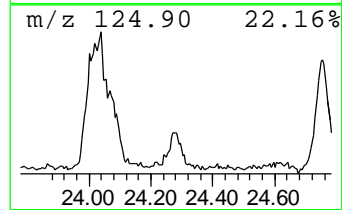
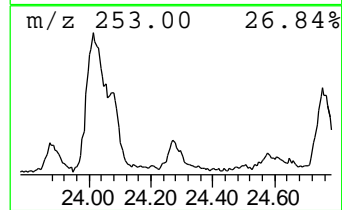
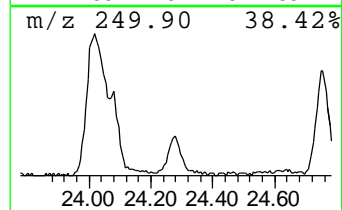
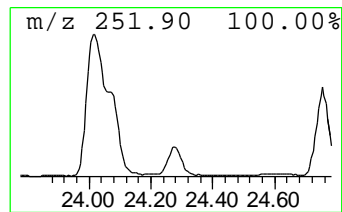
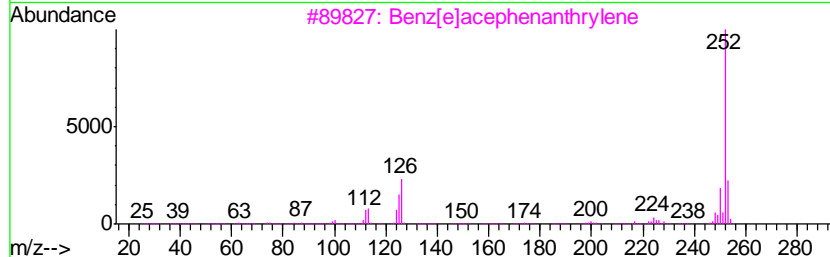
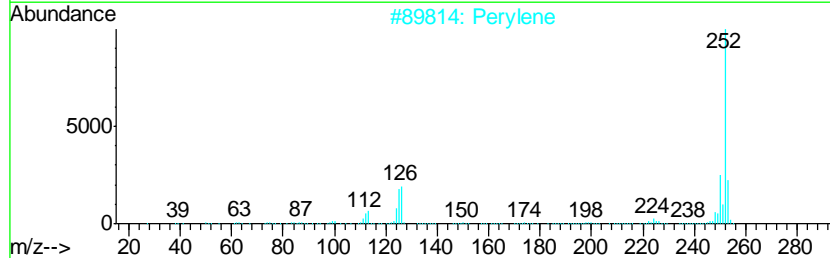
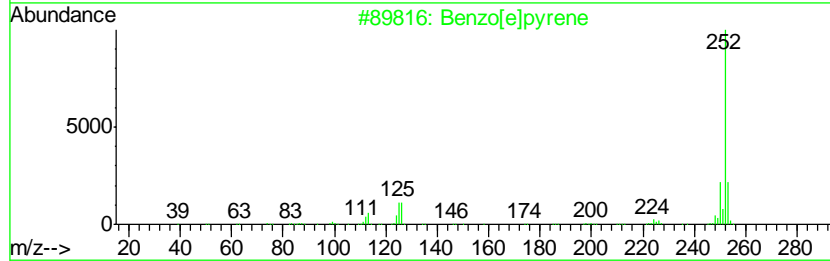
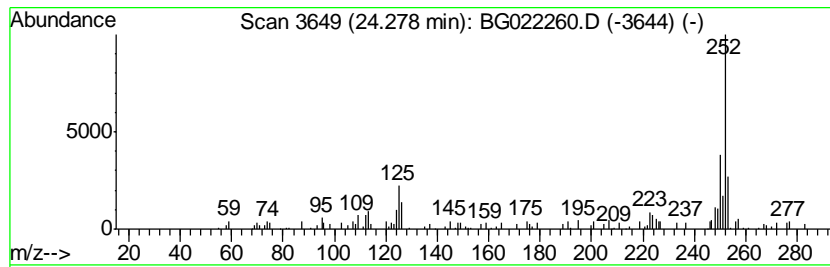
Quant Method : Z:\HPCHEM1\BNA G\METHODS\8270-BG060616.M
 Quant Title : ASP BNA STANDARDS FOR 5 POINT CALIBRATION

TIC Library : C:\DATABASE\NIST02.L
 TIC Integration Parameters: LSCINT.P

 Peak Number 9 Benzo[e]pyrene Concentration Rank 10

R.T.	EstConc	Area	Relative to ISTD	R.T.
24.28	2.12 ng	61439	Perylene-d12	25.06

Hit#	of	Tentative ID	MW	MolForm	CAS#	Qual
1	5	Benzo[e]pyrene	252	C20H12	000192-97-2	70
2		Perylene	252	C20H12	000198-55-0	62
3		Benz[e]acephenanthrylene	252	C20H12	000205-99-2	58
4		Benzo[a]pyrene	252	C20H12	000050-32-8	52
5		Benzo[j]fluoranthene	252	C20H12	000205-82-3	52



Data Path : Z:\HPCHEM1\BNA_G\DATA\BG060916\
Data File : BG022260.D
Acq On : 9 Jun 2016 9:15
Operator : UM/SJ
Sample : H3402-06 2X
Misc :
ALS Vial : 7 Sample Multiplier: 1

Instrument :
BNA_G
ClientSampleId :
SS-41

Quant Method : Z:\HPCHEM1\BNA_G\METHODS\8270-BG060616.M
Quant Title : ASP BNA STANDARDS FOR 5 POINT CALIBRATION

TIC Library : C:\DATABASE\NIST02.L
TIC Integration Parameters: LSCINT.P

TIC Top Hit name	RT	EstConc	Units	Response	--Internal Standard--			
					#	RT	Resp	Conc
2-Pentanone, 4-hy...	5.18	4.6	ng	47988	1	8.11	209740	20.0
3-Chloro-6-fluoro...	7.65	57.5	ng	602439	1	8.11	209740	20.0
Phenanthrene, 1-m...	18.36	2.4	ng	68272	4	17.49	578450	20.0
4H-Cyclopenta[def...	18.56	6.4	ng	185115	4	17.49	578450	20.0
Fluoranthene, 2-m...	20.38	3.1	ng	162908	5	21.76	1061960	20.0
Benzo[e]pyrene	24.28	2.1	ng	61439	6	25.06	580784	20.0