

Data Path : Z:\HPCHEM1\BNA G\DATA\BG061317\
 Data File : BG027403.D
 Acq On : 14 Jun 2017 2:17
 Operator : SJ/MA
 Sample : I3598-03RE
 Misc :
 ALS Vial : 16 Sample Multiplier: 1

Instrument :
 BNA_G
 ClientSampleId :

Quant Time: Jun 14 06:13:04 2017
 Quant Method : Z:\HPCHEM1\BNA G\METHODS\8270-BG060517.M
 Quant Title : ASP BNA STANDARDS FOR 5 POINT CALIBRATION
 QLast Update : Mon Jun 05 16:00:35 2017
 Response via : Initial Calibration

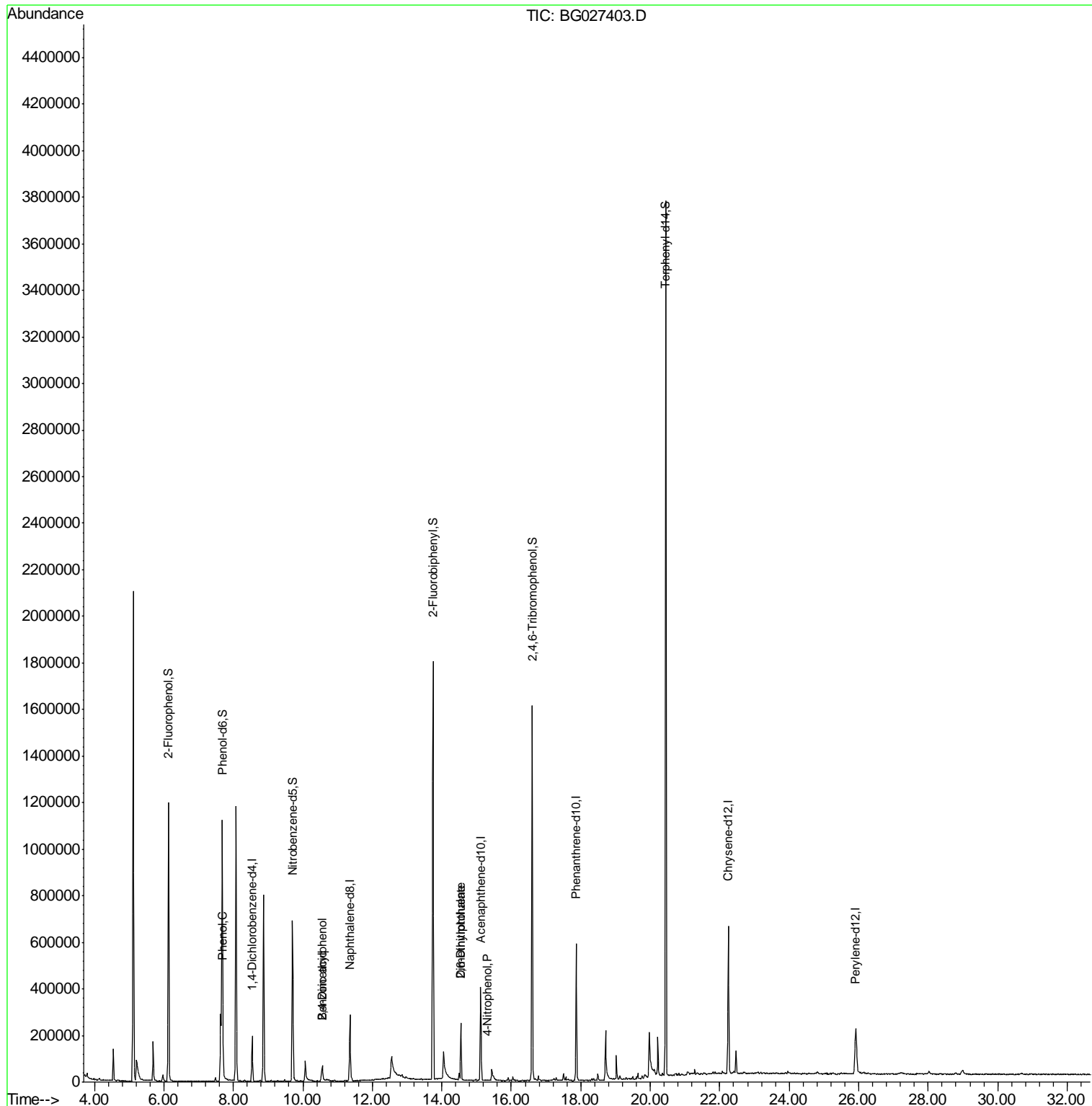
Internal Standards	R.T.	QIon	Response	Conc	Units	Dev(Min)
1) 1,4-Dichlorobenzene-d4	8.54	152	55521	20.00	ng	-0.04
21) Naphthalene-d8	11.36	136	246803	20.00	ng	-0.04
38) Acenaphthene-d10	15.12	164	136430	20.00	ng	-0.04
63) Phenanthrene-d10	17.87	188	362418	20.00	ng	-0.05
75) Chrysene-d12	22.25	240	429091	20.00	ng	-0.06
86) Perylene-d12	25.91	264	203620	20.00	ng	-0.11
System Monitoring Compounds						
5) 2-Fluorophenol	6.13	112	541015	148.70	ng	-0.03
7) Phenol-d6	7.68	99	687896	128.80	ng	-0.02
23) Nitrobenzene-d5	9.70	82	462581	117.87	ng	-0.04
41) 2,4,6-Tribromophenol	16.60	330	323995	180.34	ng	-0.04
44) 2-Fluorobiphenyl	13.75	172	946749	97.08	ng	-0.04
78) Terphenyl-d14	20.44	244	1721485	102.34	ng	-0.05
Target Compounds						
10) Phenol	7.71	94	12018	2.20	ng	91
27) 2,4-Dimethylphenol	10.56	122	32038	8.07	ng	# 1
32) Benzoic acid	10.56	122	32038	17.75	ng	84
49) Dimethylphthalate	14.55	163	161829	14.95	ng	96
50) 2,6-Dinitrotoluene	14.55	165	1582	6.25	ng	# 29
55) 4-Nitrophenol	15.31	139	56	6.15	ng	# 1

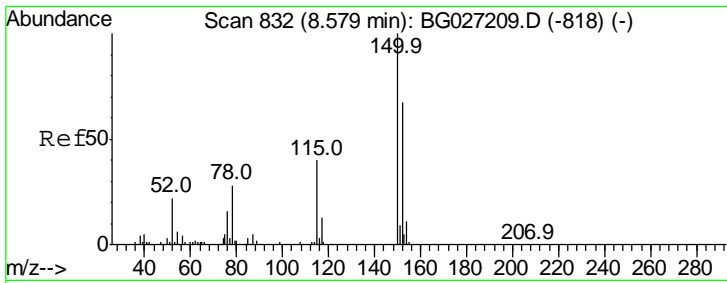
(#) = qualifier out of range (m) = manual integration (+) = signals summed

Data Path : Z:\HPCHEM1\BNA G\DATA\BG061317\
 Data File : BG027403.D
 Acq On : 14 Jun 2017 2:17
 Operator : SJ/MA
 Sample : I3598-03RE
 Misc :
 ALS Vial : 16 Sample Multiplier: 1

Instrument :
 BNA_G
 ClientSampled :

Quant Time: Jun 14 06:13:04 2017
 Quant Method : Z:\HPCHEM1\BNA G\METHODS\8270-BG060517.M
 Quant Title : ASP BNA STANDARDS FOR 5 POINT CALIBRATION
 QLast Update : Mon Jun 05 16:00:35 2017
 Response via : Initial Calibration

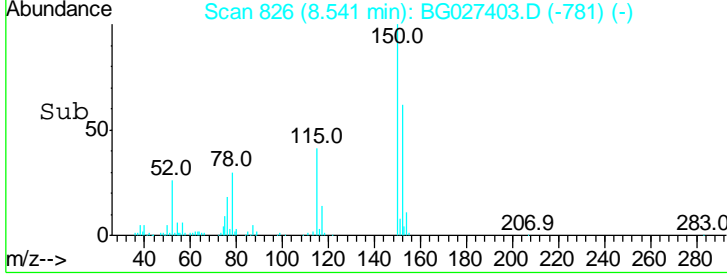
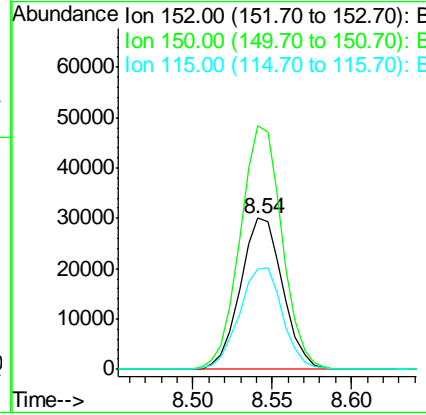
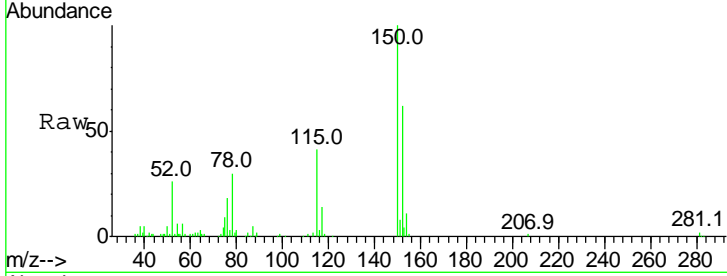




#1
 1,4-Dichlorobenzene-d4
 Concen: 20.00 ng
 RT: 8.54 min Scan# 826
 Delta R.T. -0.04 min
 Lab File: BG027403.D
 Acq: 14 Jun 2017 2:17

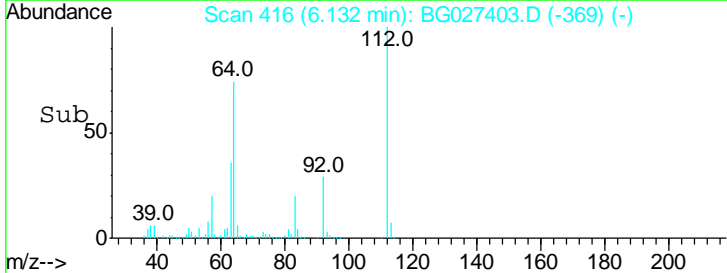
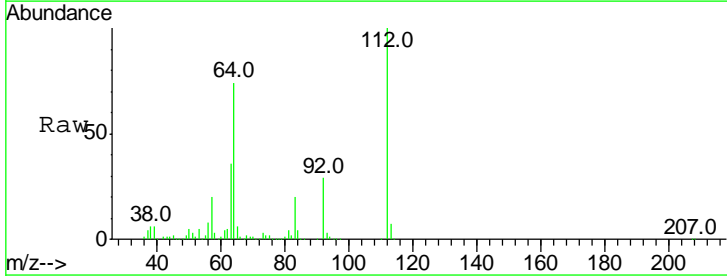
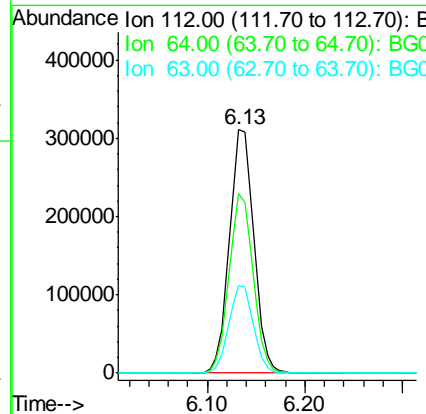
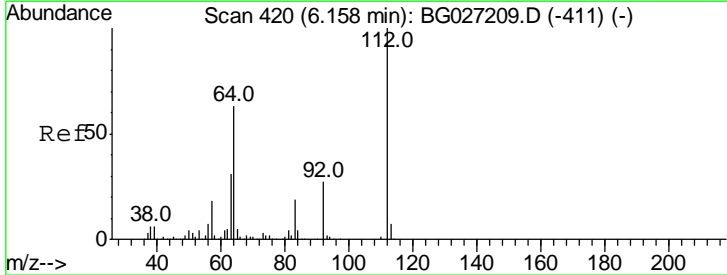
Instrument :
 BNA_G
 ClientSampled :

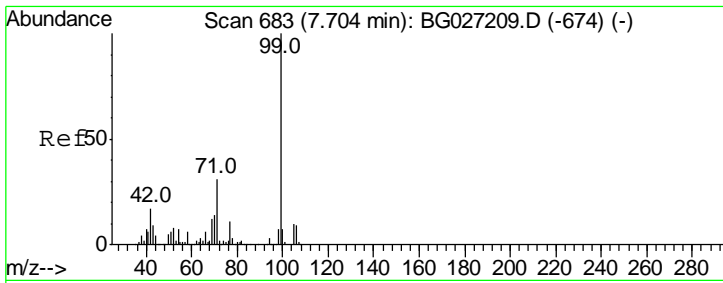
Tgt Ion	Resp	Lower	Upper
152	100		
150	161.1	114.0	171.0
115	66.7	48.1	72.1



#5
 2-Fluorophenol
 Concen: 148.70 ng
 RT: 6.13 min Scan# 416
 Delta R.T. -0.03 min
 Lab File: BG027403.D
 Acq: 14 Jun 2017 2:17

Tgt Ion	Resp	Lower	Upper
112	100		
64	74.0	61.8	92.6
63	36.2	37.2	55.8#

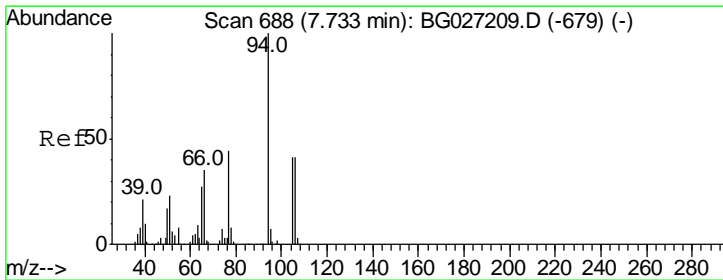
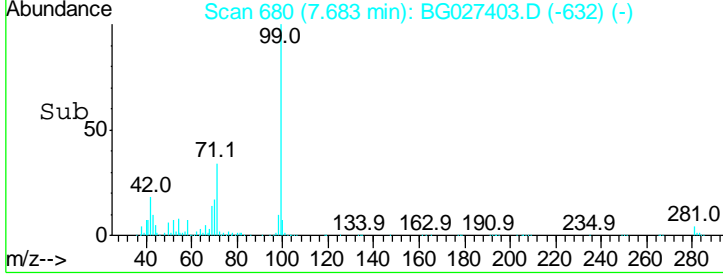
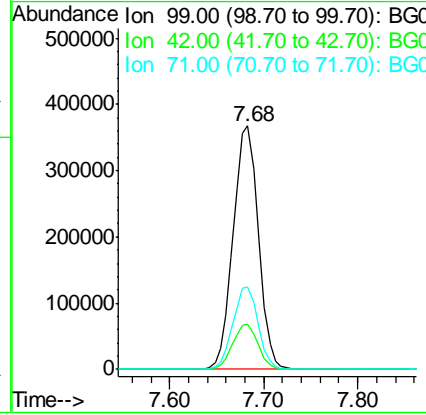
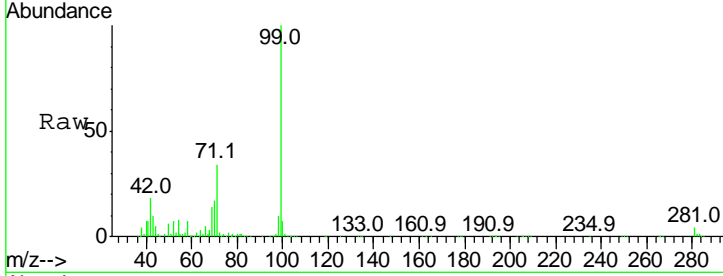




#7
 Phenol-d6
 Concen: 128.80 ng
 RT: 7.68 min Scan# 680
 Delta R.T. -0.02 min
 Lab File: BG027403.D
 Acq: 14 Jun 2017 2:17

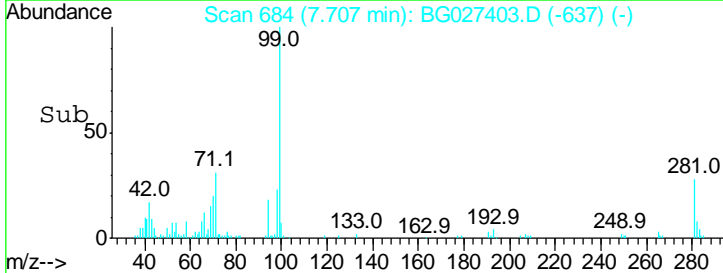
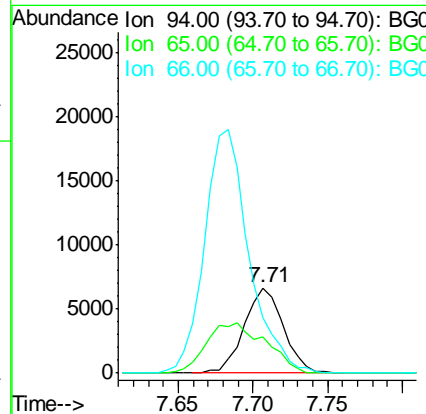
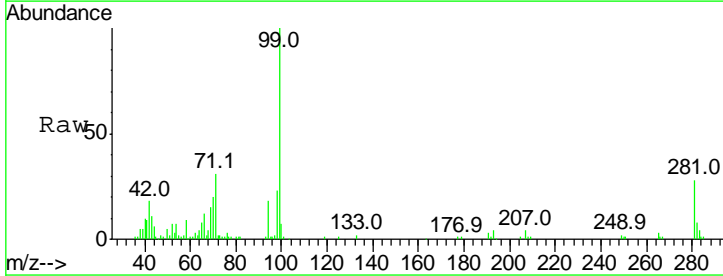
Instrument :
 BNA_G
 ClientSampled :

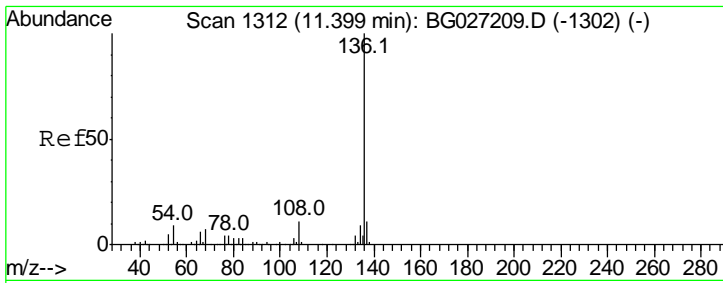
Tgt Ion	Resp	Lower	Upper
99	100		
42	18.3	20.5	30.7#
71	33.9	37.6	56.4#



#10
 Phenol
 Concen: 2.20 ng
 RT: 7.71 min Scan# 684
 Delta R.T. -0.03 min
 Lab File: BG027403.D
 Acq: 14 Jun 2017 2:17

Tgt Ion	Resp	Lower	Upper
94	100		
65	41.8	20.6	60.6
66	65.8	35.5	75.5

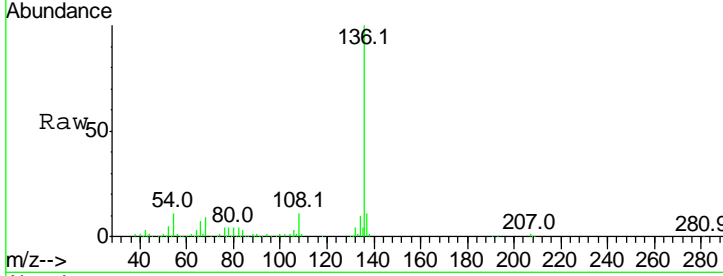




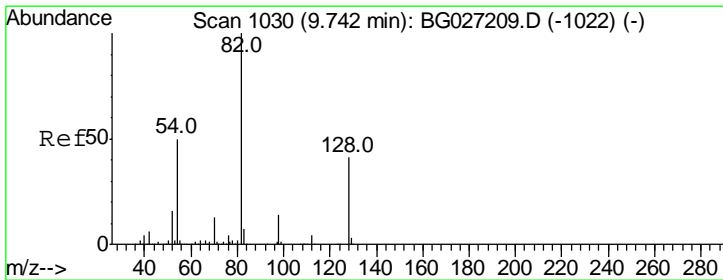
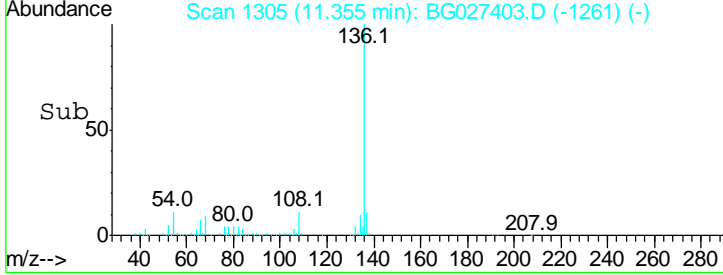
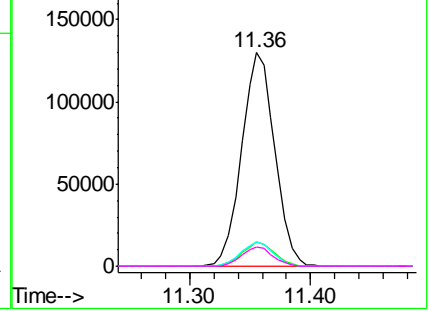
#21
 Naphthalene-d8
 Concen: 20.00 ng
 RT: 11.36 min Scan# 1305
 Delta R.T. -0.04 min
 Lab File: BG027403.D
 Acq: 14 Jun 2017 2:17

Instrument :
 BNA_G
 ClientSampled :

Tgt Ion	Resp	Lower	Upper
136	100		
137	11.3	8.9	13.3
54	11.4	9.3	13.9
68	9.3	5.1	7.7#

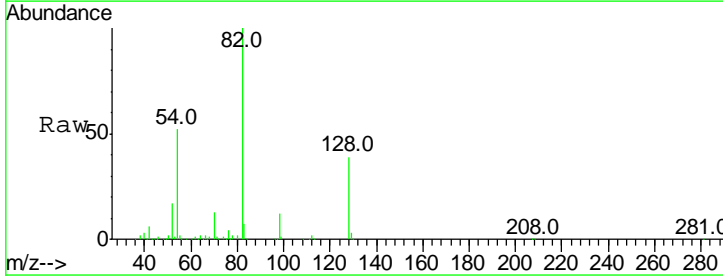


Abundance Ion 136.00 (135.70 to 136.70): E
 Ion 137.00 (136.70 to 137.70): E
 Ion 54.00 (53.70 to 54.70): BGC
 Ion 68.00 (67.70 to 68.70): BGC

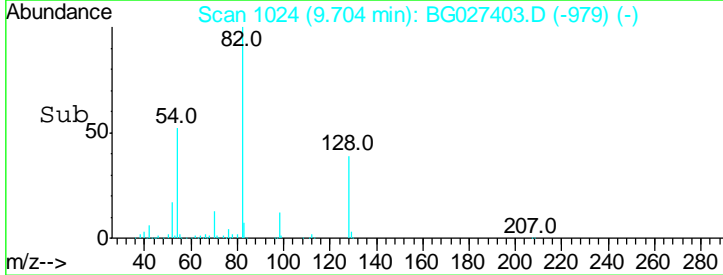
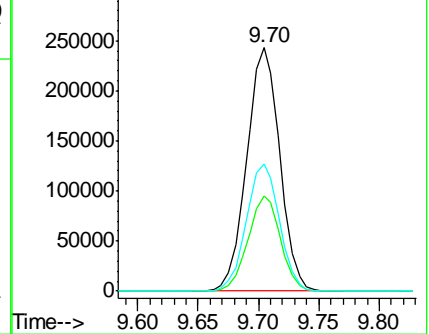


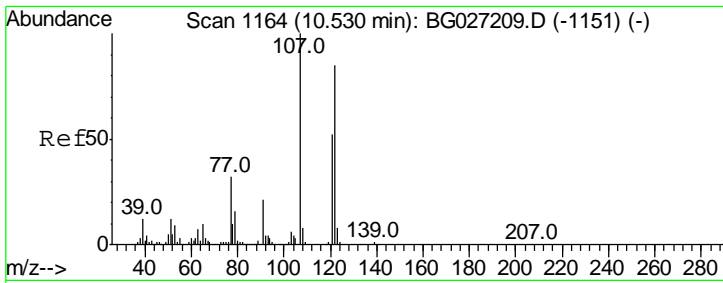
#23
 Nitrobenzene-d5
 Concen: 117.87 ng
 RT: 9.70 min Scan# 1024
 Delta R.T. -0.04 min
 Lab File: BG027403.D
 Acq: 14 Jun 2017 2:17

Tgt Ion	Resp	Lower	Upper
82	100		
128	39.3	26.4	39.6
54	52.2	49.4	74.2



Abundance Ion 82.00 (81.70 to 82.70): BGC
 Ion 128.00 (127.70 to 128.70): E
 Ion 54.00 (53.70 to 54.70): BGC

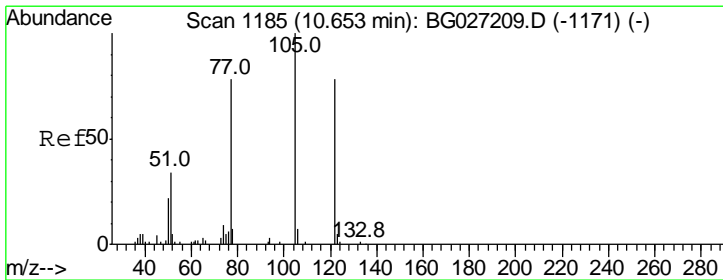
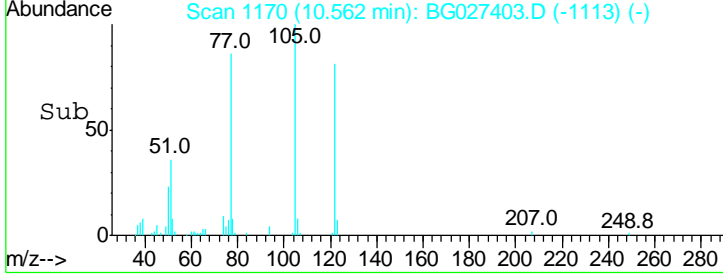
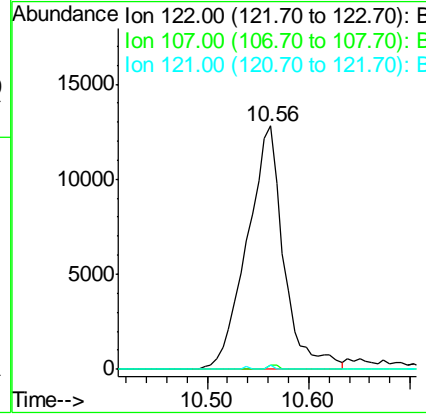
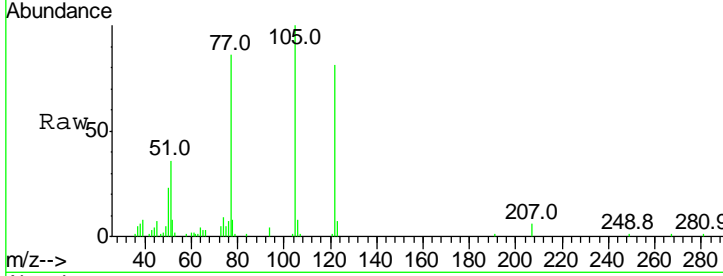




#27
 2,4-Dimethylphenol
 Concen: 8.07 ng
 RT: 10.56 min Scan# 1170
 Delta R.T. 0.03 min
 Lab File: BG027403.D
 Acq: 14 Jun 2017 2:17

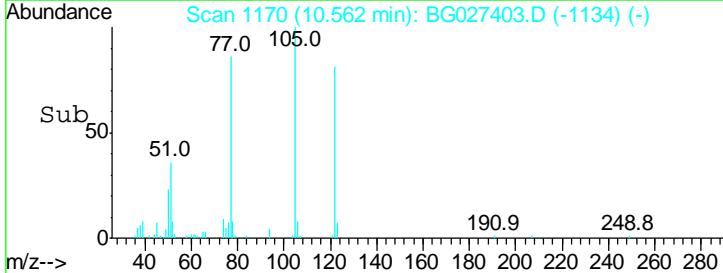
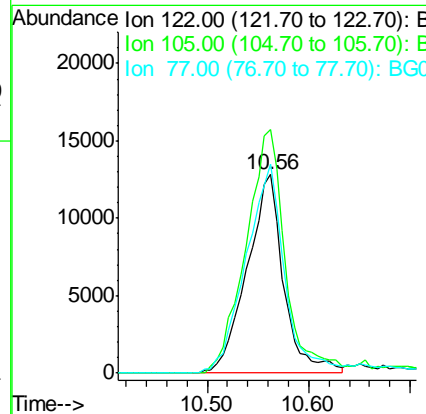
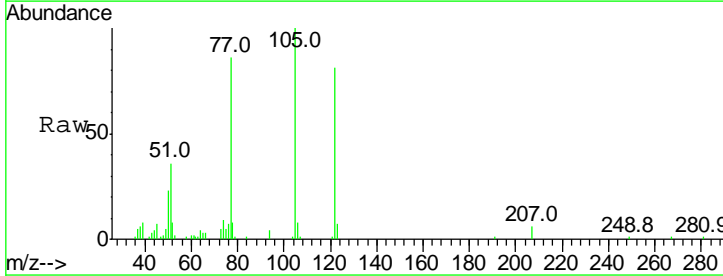
Instrument :
 BNA_G
 ClientSampled :

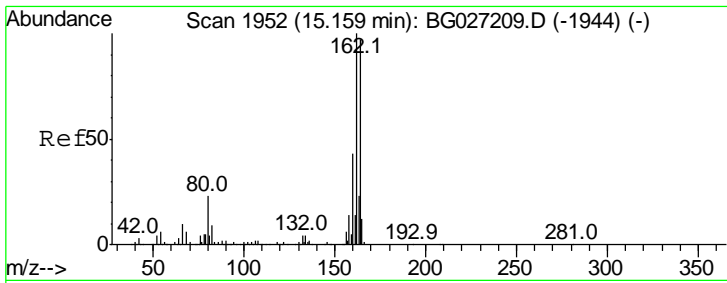
Tgt Ion	Ratio	Lower	Upper
122	100		
107	1.6	104.2	156.4#
121	1.5	46.0	69.0#



#32
 Benzoic acid
 Concen: 17.75 ng
 RT: 10.56 min Scan# 1170
 Delta R.T. -0.09 min
 Lab File: BG027403.D
 Acq: 14 Jun 2017 2:17

Tgt Ion	Ratio	Lower	Upper
122	100		
105	122.8	120.1	160.1
77	105.2	104.6	144.6

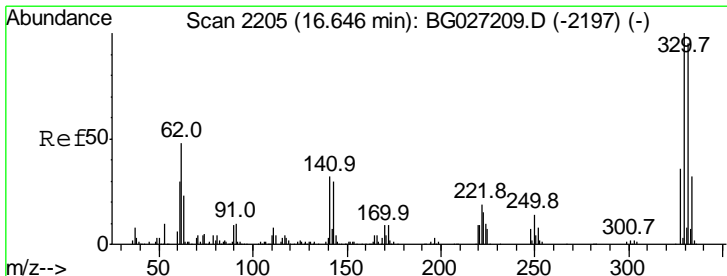
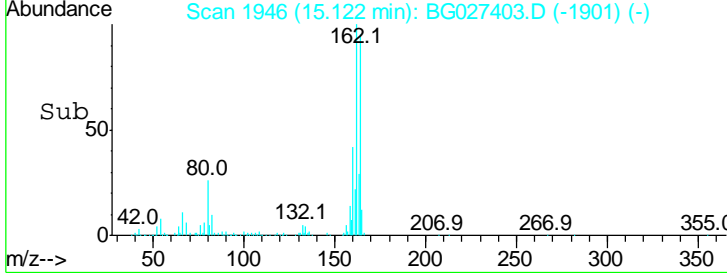
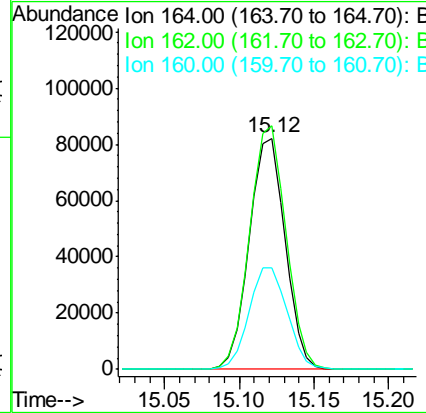
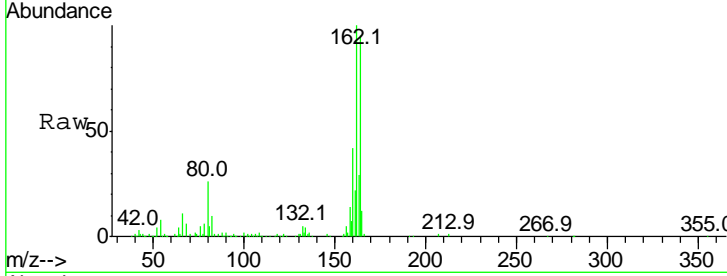




#38
 Acenaphthene-d10
 Concen: 20.00 ng
 RT: 15.12 min Scan# 1946
 Delta R.T. -0.04 min
 Lab File: BG027403.D
 Acq: 14 Jun 2017 2:17

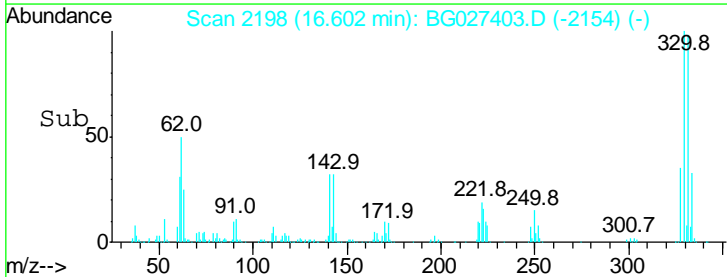
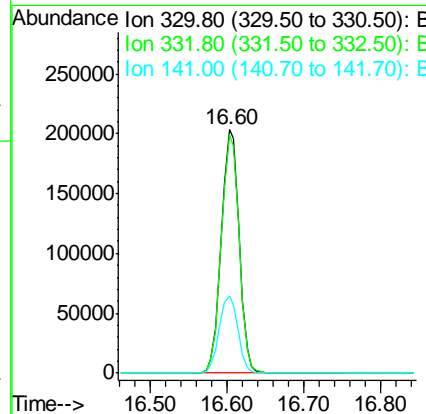
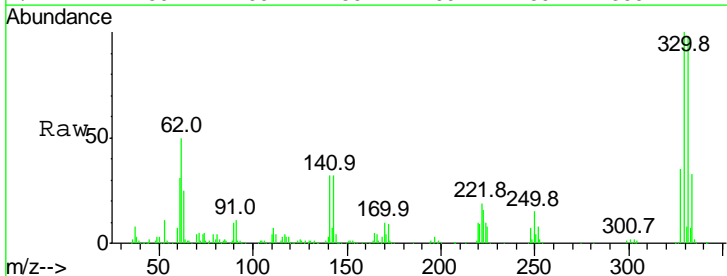
Instrument :
 BNA_G
 ClientSampled :

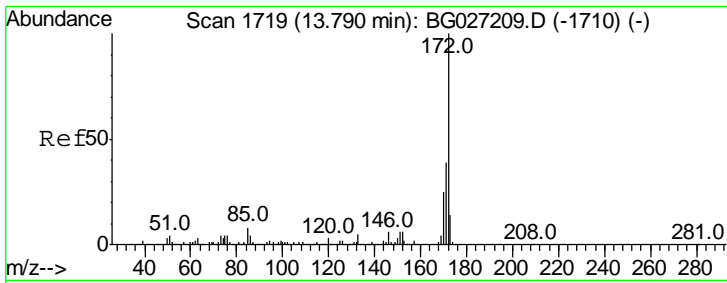
Tgt Ion	Resp	Lower	Upper
164	100		
162	105.2	85.1	127.7
160	44.1	34.7	52.1



#41
 2,4,6-Tribromophenol
 Concen: 180.34 ng
 RT: 16.60 min Scan# 2198
 Delta R.T. -0.04 min
 Lab File: BG027403.D
 Acq: 14 Jun 2017 2:17

Tgt Ion	Resp	Lower	Upper
330	100		
332	97.7	77.3	115.9
141	33.3	32.1	48.1

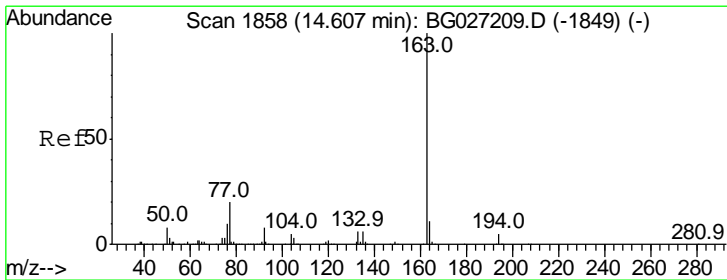
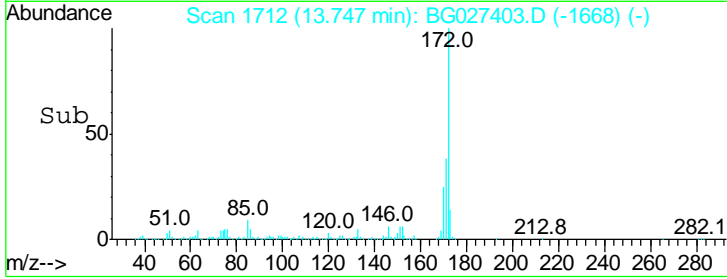
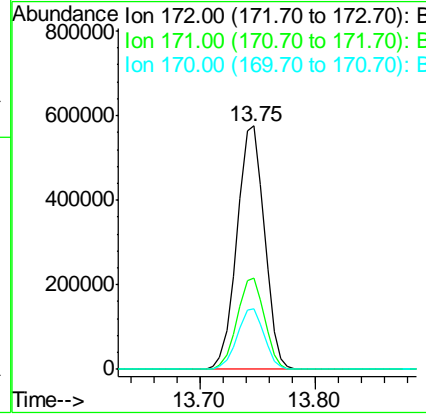
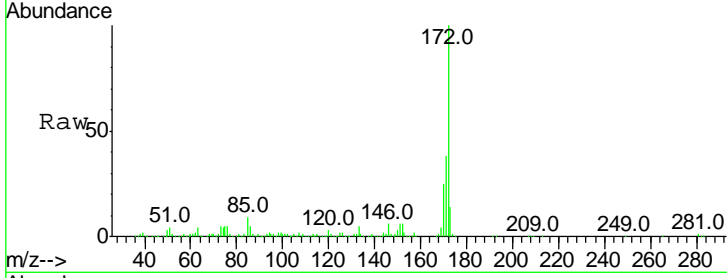




#44
 2-Fluorobiphenyl
 Concen: 97.08 ng
 RT: 13.75 min Scan# 1712
 Delta R.T. -0.04 min
 Lab File: BG027403.D
 Acq: 14 Jun 2017 2:17

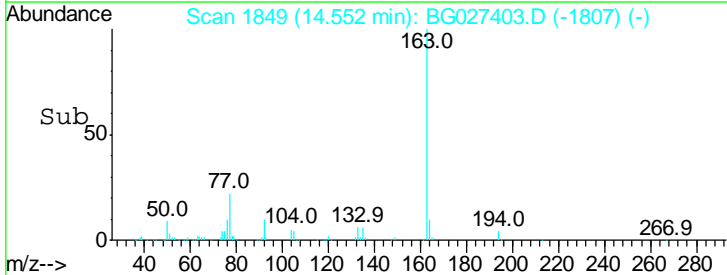
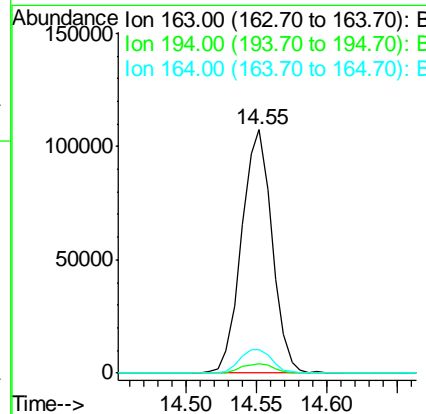
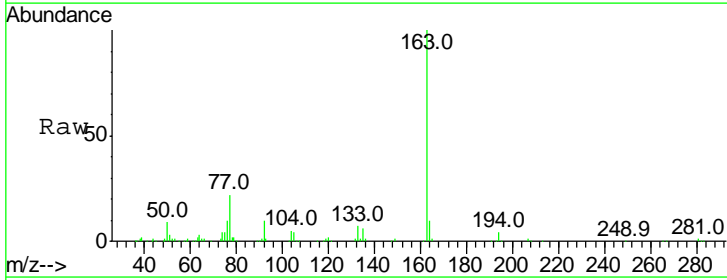
Instrument :
 BNA_G
 ClientSampled :

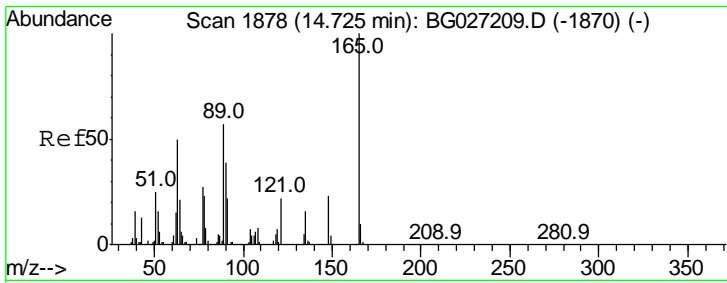
Tgt Ion	Resp	Lower	Upper
172	100		
171	37.7	32.2	48.2
170	24.8	21.8	32.6



#49
 Dimethylphthalate
 Concen: 14.95 ng
 RT: 14.55 min Scan# 1849
 Delta R.T. -0.06 min
 Lab File: BG027403.D
 Acq: 14 Jun 2017 2:17

Tgt Ion	Resp	Lower	Upper
163	100		
194	4.0	3.8	5.6
164	9.8	9.3	13.9

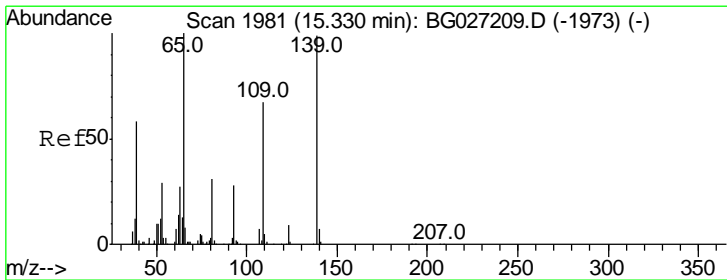
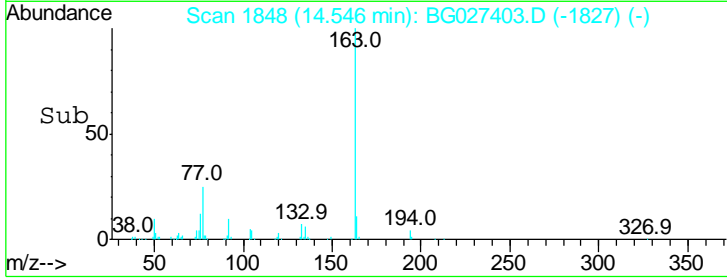
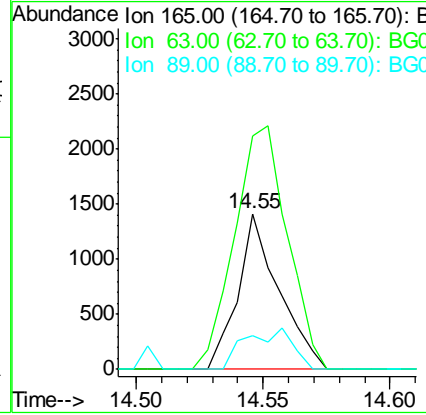
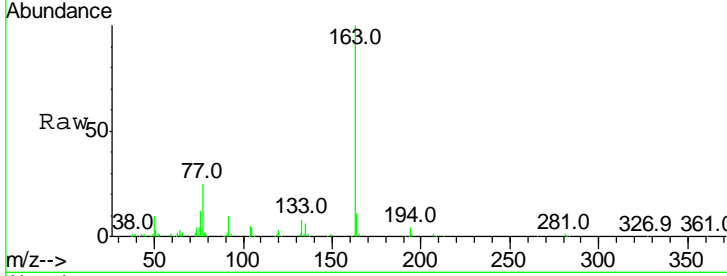




#50
 2,6-Dinitrotoluene
 Concen: 6.25 ng
 RT: 14.55 min Scan# 1848
 Delta R.T. -0.18 min
 Lab File: BG027403.D
 Acq: 14 Jun 2017 2:17

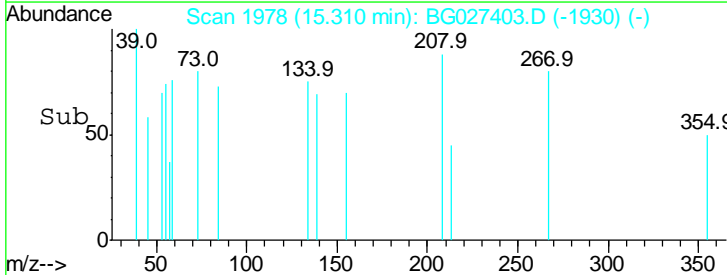
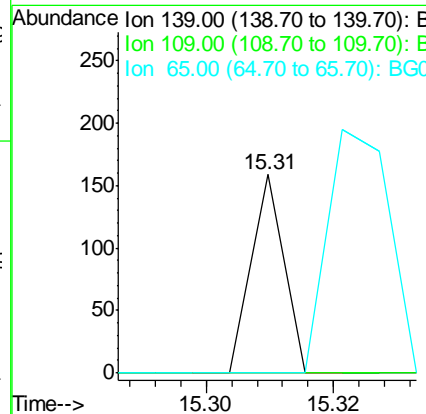
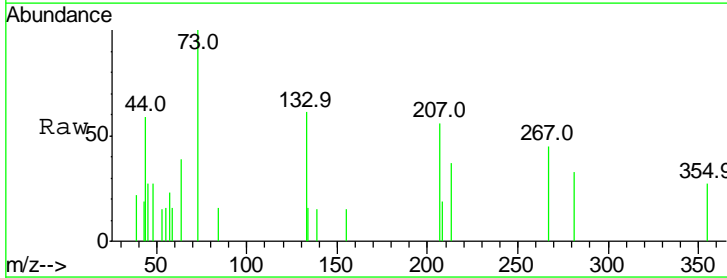
Instrument :
 BNA_G
 ClientSampled :

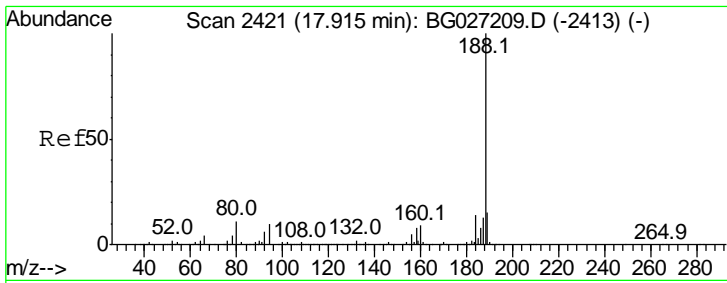
Tgt Ion	Resp	Lower	Upper
165	100		
63	150.1	63.9	95.9#
89	21.6	58.6	88.0#



#55
 4-Nitrophenol
 Concen: 6.15 ng
 RT: 15.31 min Scan# 1978
 Delta R.T. -0.02 min
 Lab File: BG027403.D
 Acq: 14 Jun 2017 2:17

Tgt Ion	Resp	Lower	Upper
139	100		
109	0.0	101.2	141.2#
65	0.0	135.3	175.3#

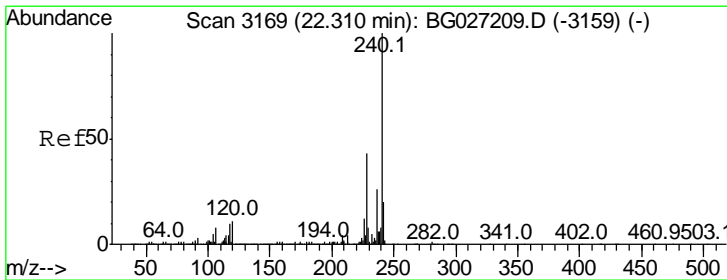
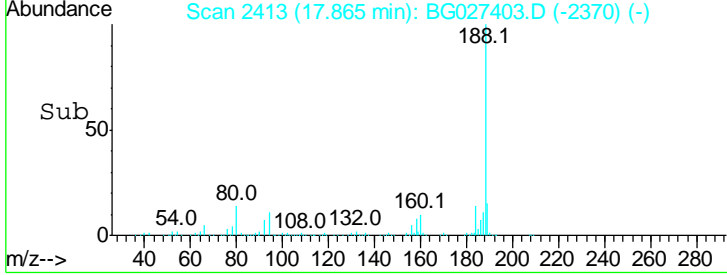
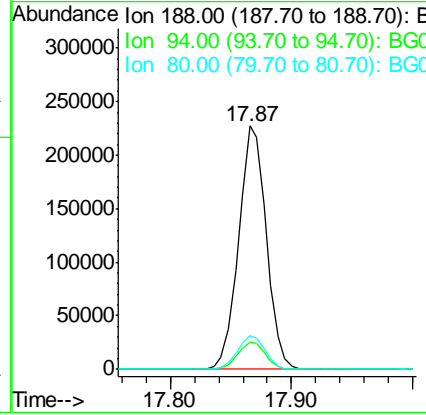
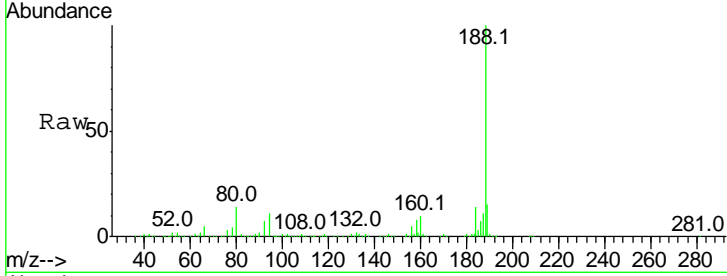




#63
 Phenanthrene-d10
 Concen: 20.00 ng
 RT: 17.87 min Scan# 2413
 Delta R.T. -0.05 min
 Lab File: BG027403.D
 Acq: 14 Jun 2017 2:17

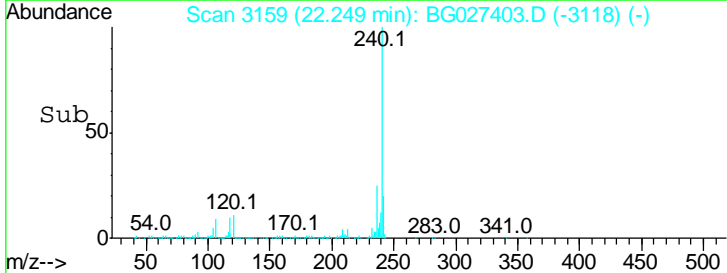
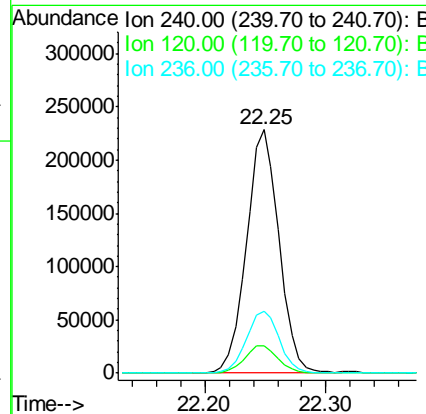
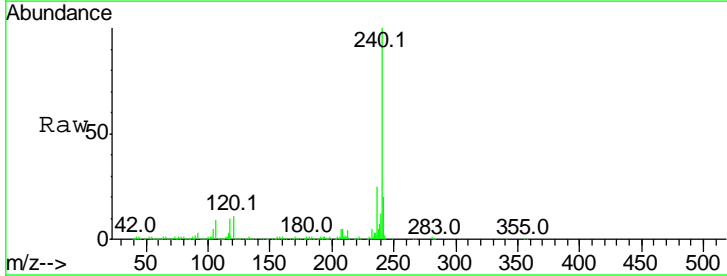
Instrument :
 BNA_G
 ClientSampled :

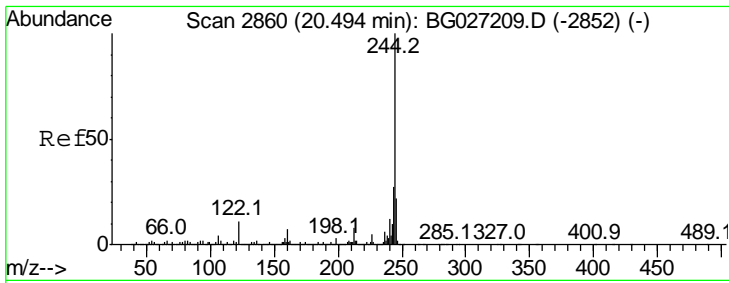
Tgt Ion	Resp	Lower	Upper
188	100		
94	11.0	5.8	8.8#
80	13.7	7.5	11.3#



#75
 Chrysene-d12
 Concen: 20.00 ng
 RT: 22.25 min Scan# 3159
 Delta R.T. -0.06 min
 Lab File: BG027403.D
 Acq: 14 Jun 2017 2:17

Tgt Ion	Resp	Lower	Upper
240	100		
120	11.3	5.7	8.5#
236	25.3	22.2	33.4

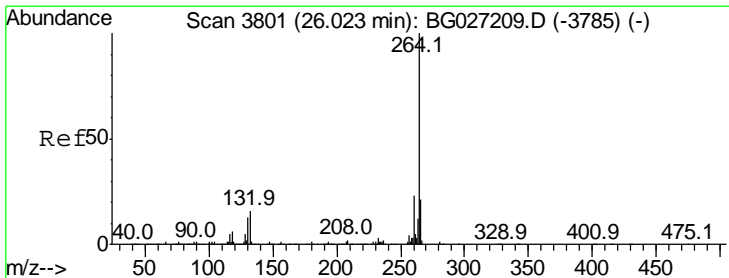
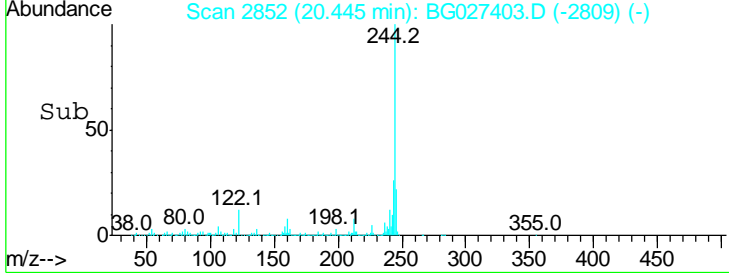
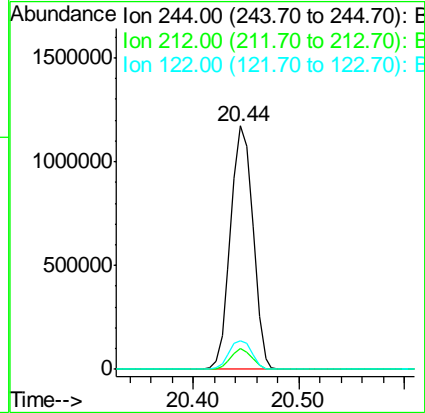
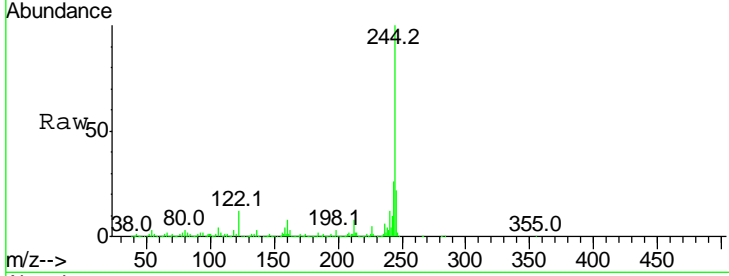




#78
 Terphenyl-d14
 Concen: 102.34 ng
 RT: 20.44 min Scan# 2852
 Delta R.T. -0.05 min
 Lab File: BG027403.D
 Acq: 14 Jun 2017 2:17

Instrument :
 BNA_G
 ClientSampled :

Tgt Ion	Ratio	Lower	Upper
244	100		
212	8.3	10.0	15.0#
122	11.9	8.6	12.8



#86
 Perylene-d12
 Concen: 20.00 ng
 RT: 25.91 min Scan# 3782
 Delta R.T. -0.11 min
 Lab File: BG027403.D
 Acq: 14 Jun 2017 2:17

Tgt Ion	Ratio	Lower	Upper
264	100		
260	25.1	21.8	32.8
265	20.5	18.2	27.4

