

Data Path : Z:\HPCHEM1\BNA G\DATA\BG061317\
 Data File : BG027413.D
 Acq On : 14 Jun 2017 9:34
 Operator : SJ/MA
 Sample : I3632-01
 Misc :
 ALS Vial : 24 Sample Multiplier: 1

Instrument :
 BNA_G
 ClientSampleId :

Quant Time: Jun 14 11:35:16 2017
 Quant Method : Z:\HPCHEM1\BNA G\METHODS\8270-BG060517.M
 Quant Title : ASP BNA STANDARDS FOR 5 POINT CALIBRATION
 QLast Update : Mon Jun 05 16:00:35 2017
 Response via : Initial Calibration

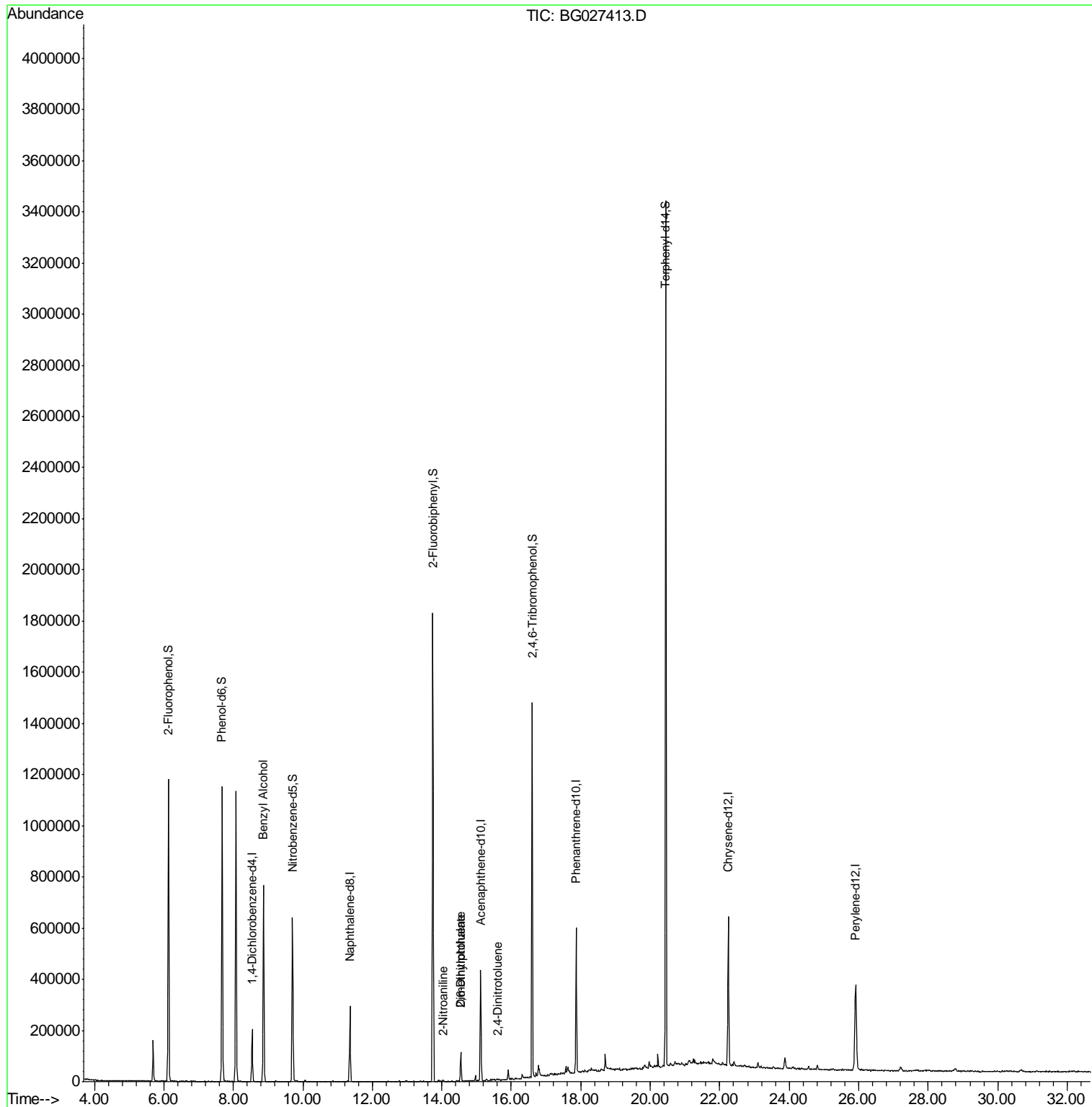
Internal Standards	R.T.	QIon	Response	Conc	Units	Dev(Min)
1) 1,4-Dichlorobenzene-d4	8.54	152	55384	20.00	ng	-0.04
21) Naphthalene-d8	11.36	136	253085	20.00	ng	-0.04
38) Acenaphthene-d10	15.12	164	150092	20.00	ng	-0.04
63) Phenanthrene-d10	17.87	188	351961	20.00	ng	-0.05
75) Chrysene-d12	22.25	240	403052	20.00	ng	-0.06
86) Perylene-d12	25.91	264	389451	20.00	ng	-0.11
System Monitoring Compounds						
5) 2-Fluorophenol	6.13	112	523651	144.28	ng	-0.03
7) Phenol-d6	7.68	99	738685	138.65	ng	-0.03
23) Nitrobenzene-d5	9.70	82	424880	105.58	ng	-0.04
41) 2,4,6-Tribromophenol	16.60	330	287325	145.37	ng	-0.04
44) 2-Fluorobiphenyl	13.74	172	950463	88.59	ng	-0.05
78) Terphenyl-d14	20.44	244	1493521	94.53	ng	-0.05
Target Compounds						
15) Benzyl Alcohol	8.86	79	7693	2.05	ng	# 46
47) 2-Nitroaniline	14.03	65	65	6.85	ng	# 16
49) Dimethylphthalate	14.55	163	76368	6.41	ng	97
50) 2,6-Dinitrotoluene	14.55	165	723	5.88	ng	# 22
56) 2,4-Dinitrotoluene	15.61	165	57	7.00	ng	# 16

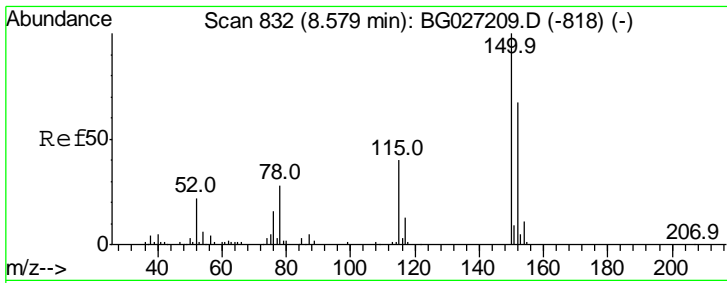
(#) = qualifier out of range (m) = manual integration (+) = signals summed

Data Path : Z:\HPCHEM1\BNA G\DATA\BG061317\
 Data File : BG027413.D
 Acq On : 14 Jun 2017 9:34
 Operator : SJ/MA
 Sample : I3632-01
 Misc :
 ALS Vial : 24 Sample Multiplier: 1

Instrument :
 BNA_G
 ClientSampleId :

Quant Time: Jun 14 11:35:16 2017
 Quant Method : Z:\HPCHEM1\BNA G\METHODS\8270-BG060517.M
 Quant Title : ASP BNA STANDARDS FOR 5 POINT CALIBRATION
 QLast Update : Mon Jun 05 16:00:35 2017
 Response via : Initial Calibration

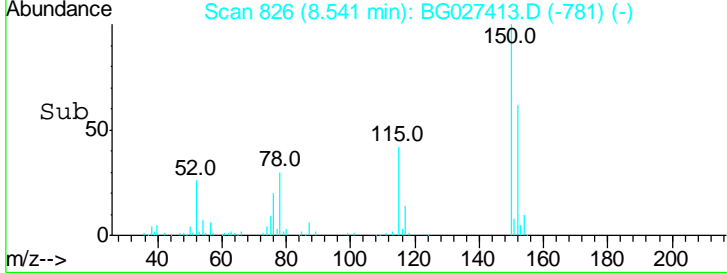
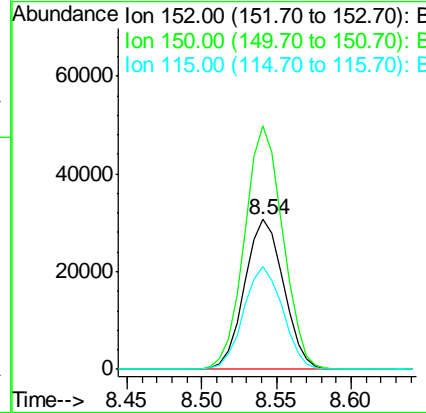
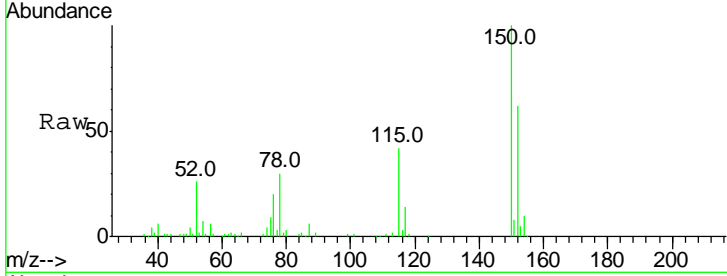




#1
 1,4-Dichlorobenzene-d4
 Concen: 20.00 ng
 RT: 8.54 min Scan# 826
 Delta R.T. -0.04 min
 Lab File: BG027413.D
 Acq: 14 Jun 2017 9:34

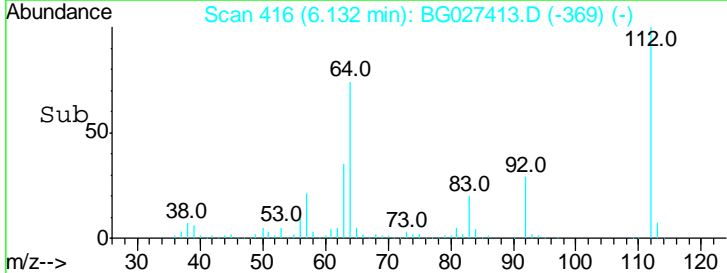
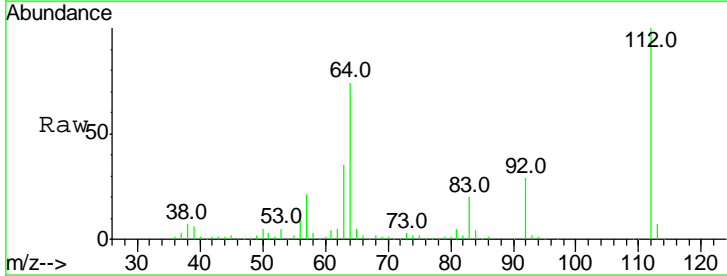
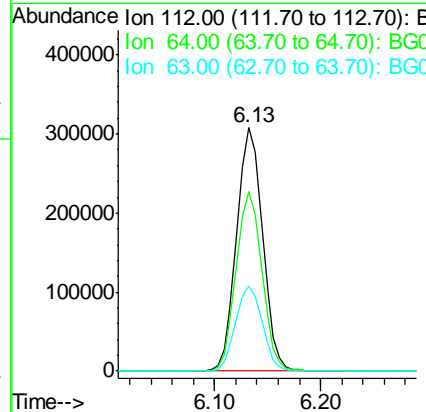
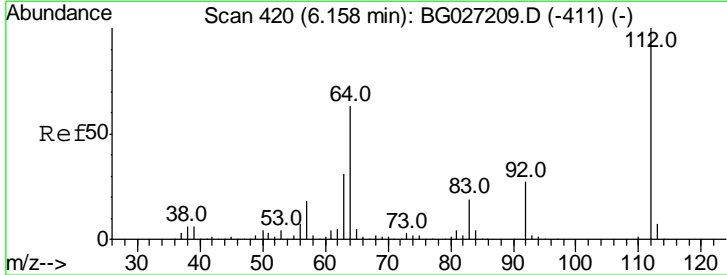
Instrument :
 BNA_G
 ClientSampled :

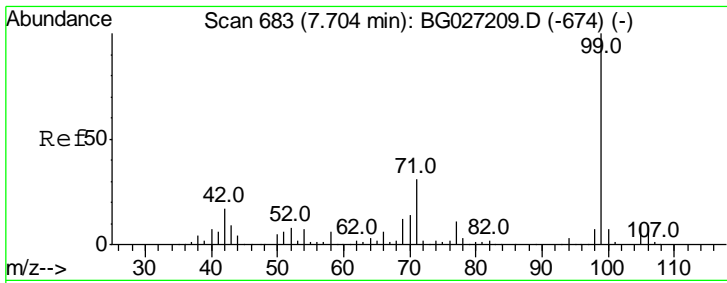
Tgt Ion	Resp	Lower	Upper
152	100		
150	162.5	114.0	171.0
115	68.2	48.1	72.1



#5
 2-Fluorophenol
 Concen: 144.28 ng
 RT: 6.13 min Scan# 416
 Delta R.T. -0.03 min
 Lab File: BG027413.D
 Acq: 14 Jun 2017 9:34

Tgt Ion	Resp	Lower	Upper
112	100		
64	73.5	61.8	92.6
63	35.1	37.2	55.8#

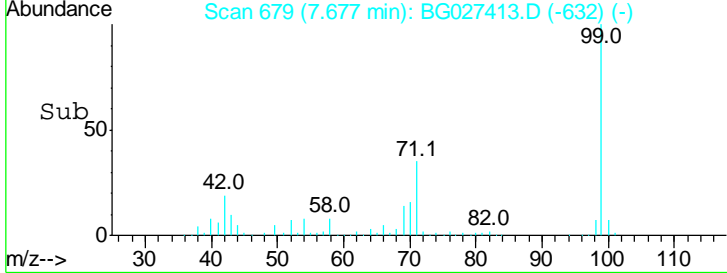
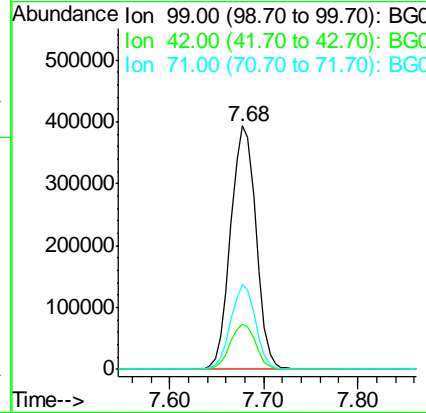
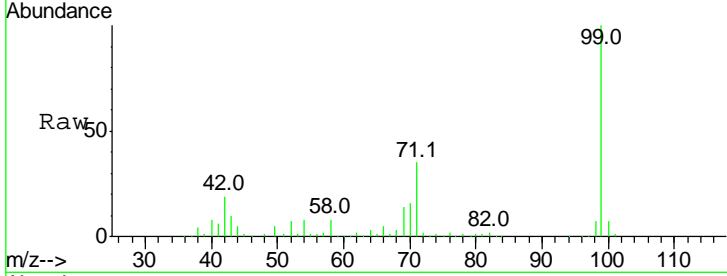




#7
 Phenol-d6
 Concen: 138.65 ng
 RT: 7.68 min Scan# 679
 Delta R.T. -0.03 min
 Lab File: BG027413.D
 Acq: 14 Jun 2017 9:34

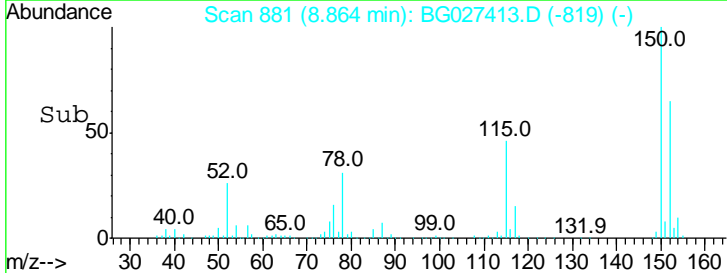
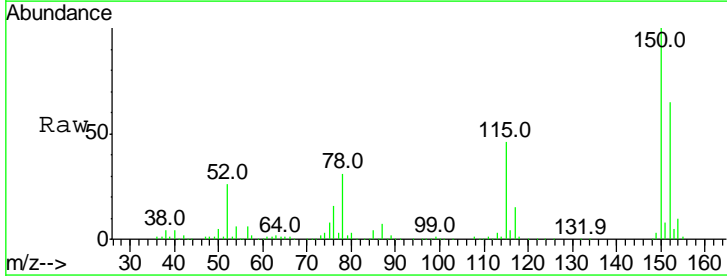
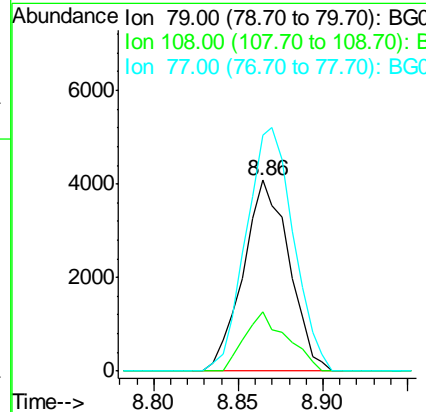
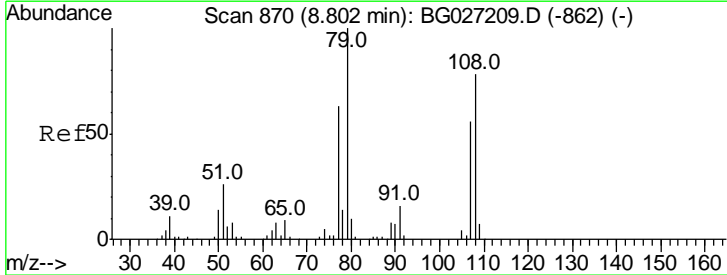
Instrument :
 BNA_G
 ClientSampled :

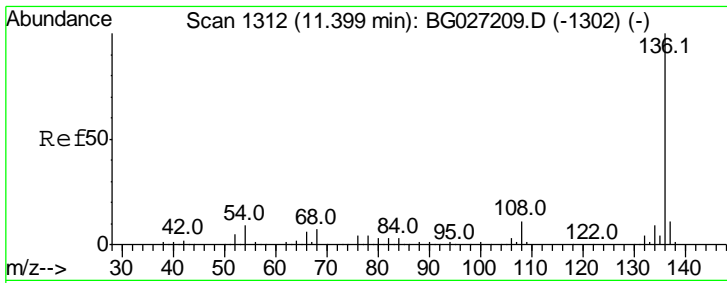
Tgt Ion	Resp	Lower	Upper
99	100		
42	18.7	20.5	30.7#
71	34.8	37.6	56.4#



#15
 Benzyl Alcohol
 Concen: 2.05 ng
 RT: 8.86 min Scan# 881
 Delta R.T. 0.06 min
 Lab File: BG027413.D
 Acq: 14 Jun 2017 9:34

Tgt Ion	Resp	Lower	Upper
79	100		
108	31.1	45.5	68.3#
77	123.6	54.3	81.5#



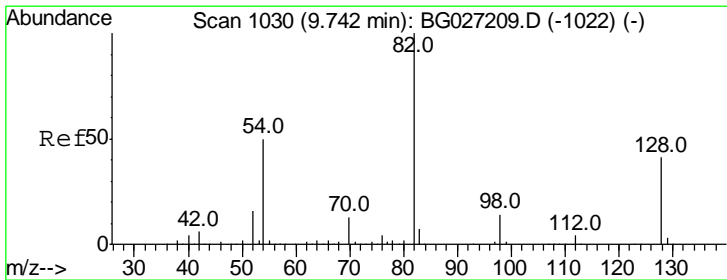
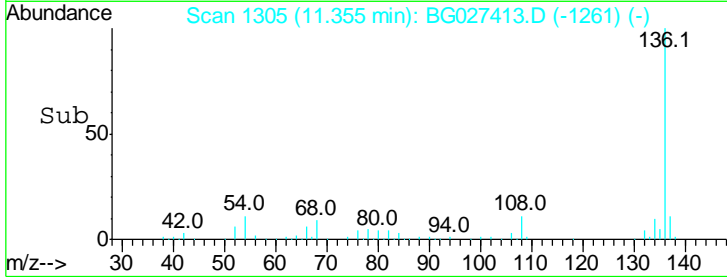
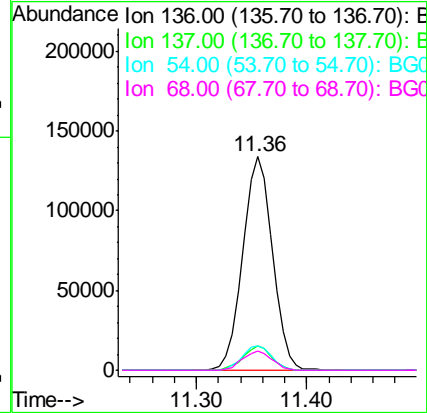
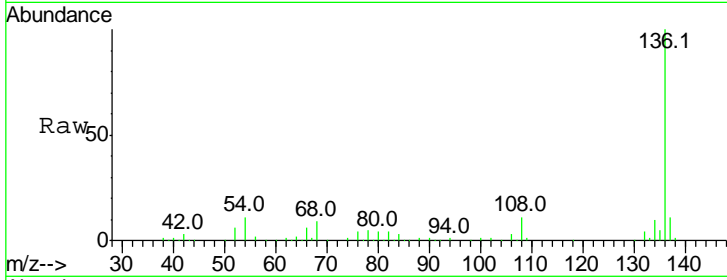


#21
 Naphthalene-d8
 Concen: 20.00 ng
 RT: 11.36 min Scan# 1305
 Delta R.T. -0.04 min
 Lab File: BG027413.D
 Acq: 14 Jun 2017 9:34

Instrument :
 BNA_G
 ClientSampled :

Tgt Ion: 136 Resp: 253085

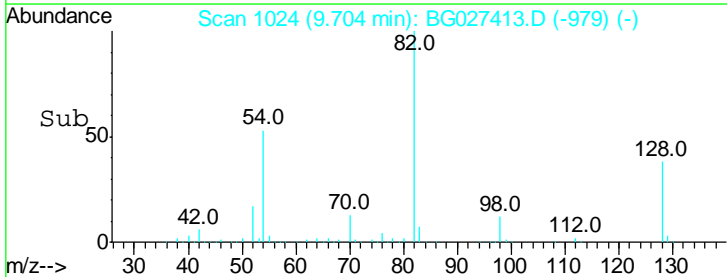
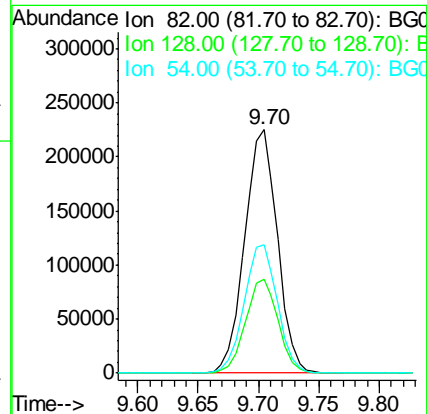
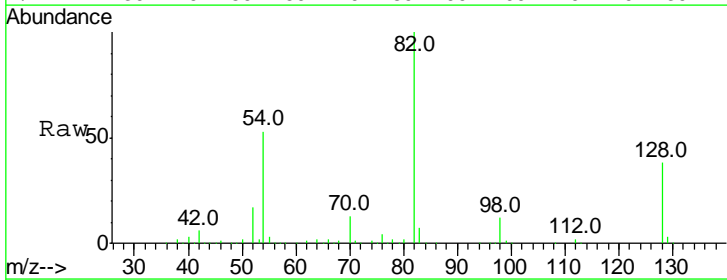
Ion	Ratio	Lower	Upper
136	100		
137	11.3	8.9	13.3
54	11.4	9.3	13.9
68	8.8	5.1	7.7#

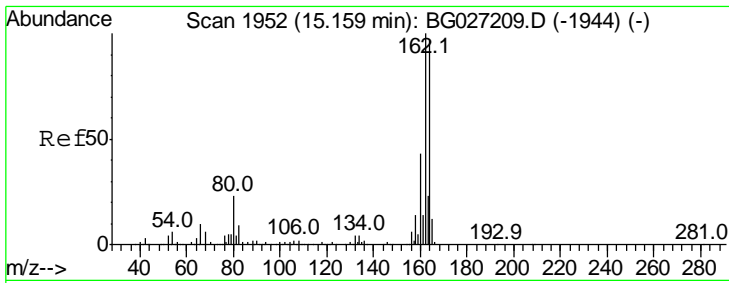


#23
 Nitrobenzene-d5
 Concen: 105.58 ng
 RT: 9.70 min Scan# 1024
 Delta R.T. -0.04 min
 Lab File: BG027413.D
 Acq: 14 Jun 2017 9:34

Tgt Ion: 82 Resp: 424880

Ion	Ratio	Lower	Upper
82	100		
128	38.3	26.4	39.6
54	52.9	49.4	74.2

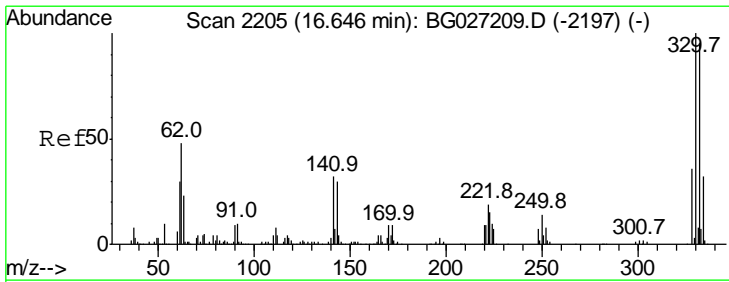
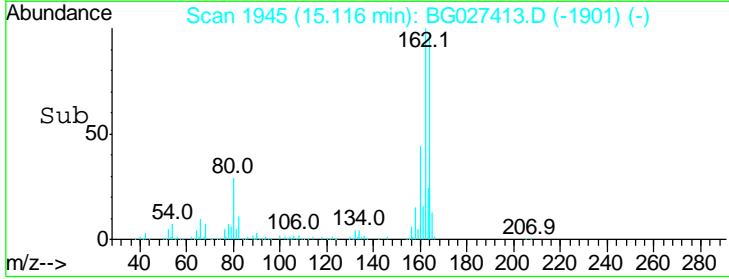
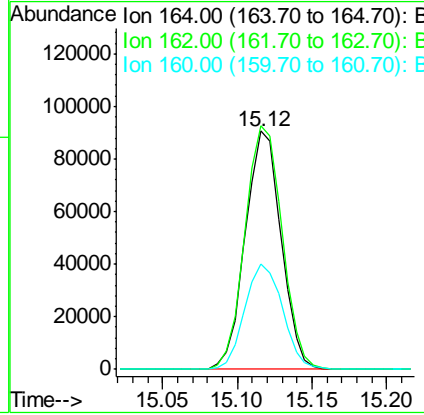
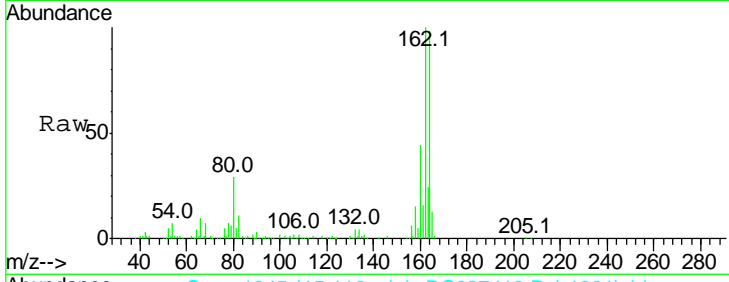




#38
 Acenaphthene-d10
 Concen: 20.00 ng
 RT: 15.12 min Scan# 1945
 Delta R.T. -0.04 min
 Lab File: BG027413.D
 Acq: 14 Jun 2017 9:34

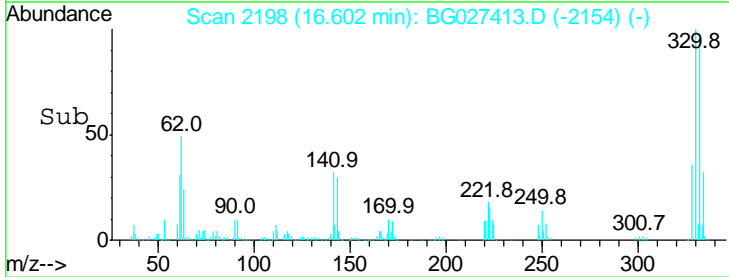
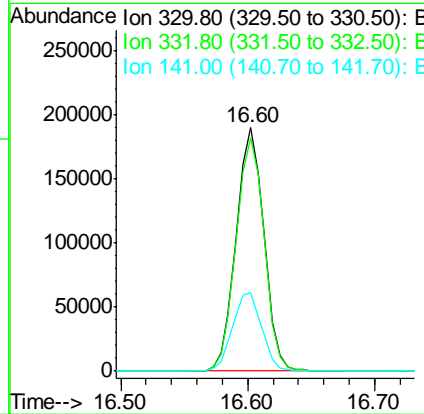
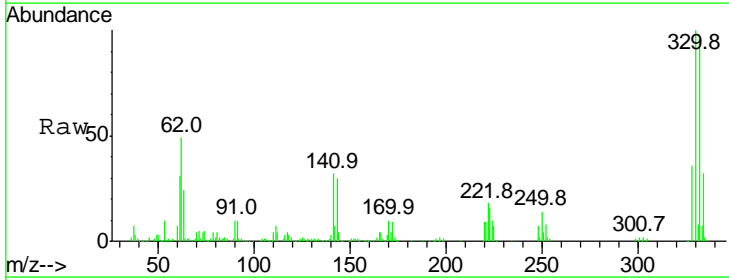
Instrument :
 BNA_G
 ClientSampled :

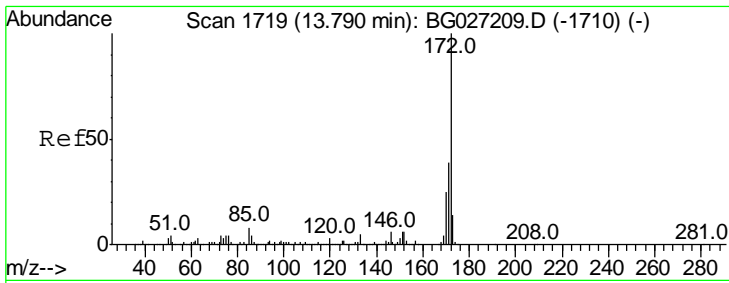
Tgt Ion	Resp	Lower	Upper
164	100		
162	102.3	85.1	127.7
160	44.5	34.7	52.1



#41
 2,4,6-Tribromophenol
 Concen: 145.37 ng
 RT: 16.60 min Scan# 2198
 Delta R.T. -0.04 min
 Lab File: BG027413.D
 Acq: 14 Jun 2017 9:34

Tgt Ion	Resp	Lower	Upper
330	100		
332	96.7	77.3	115.9
141	34.0	32.1	48.1

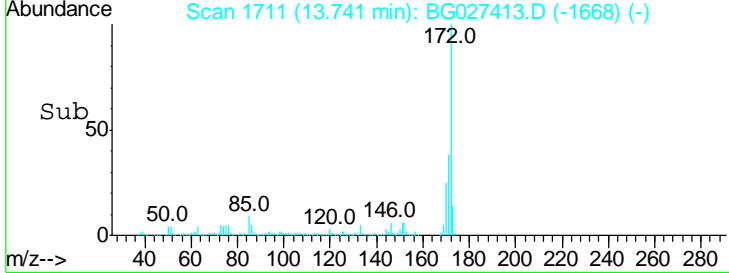
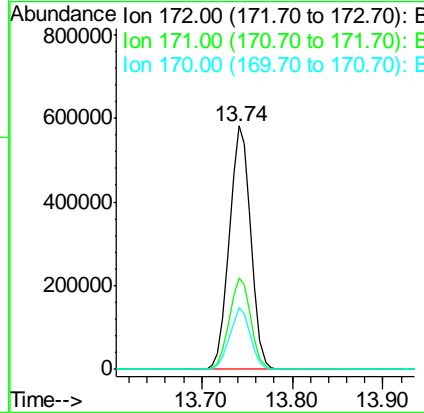
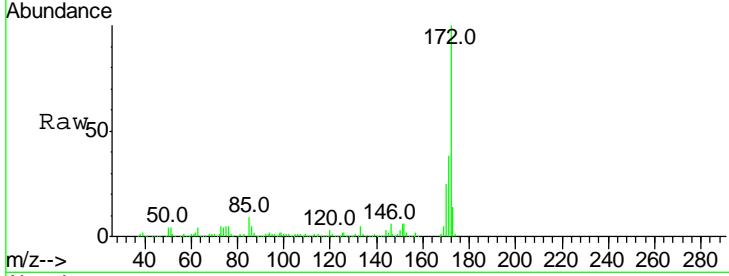




#44
 2-Fluorobiphenyl
 Concen: 88.59 ng
 RT: 13.74 min Scan# 1711
 Delta R.T. -0.05 min
 Lab File: BG027413.D
 Acq: 14 Jun 2017 9:34

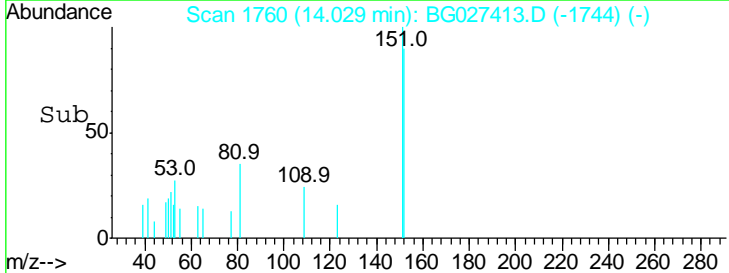
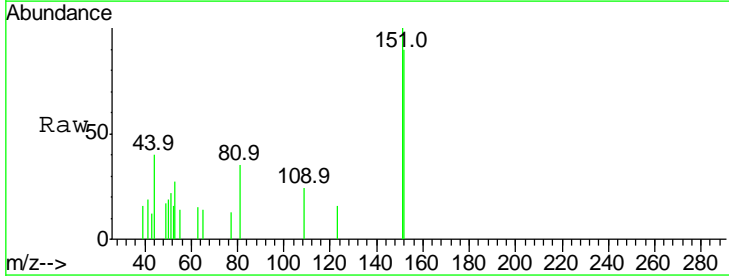
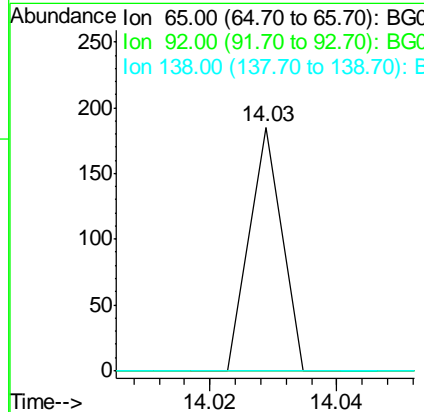
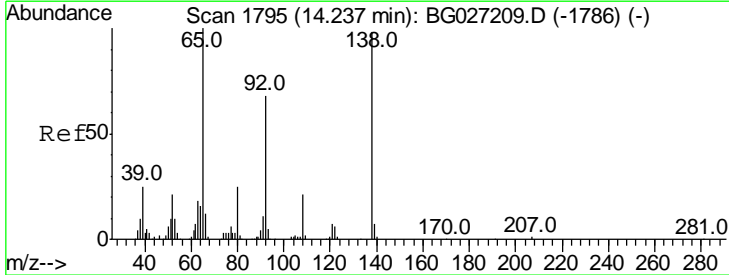
Instrument :
 BNA_G
 ClientSampled :

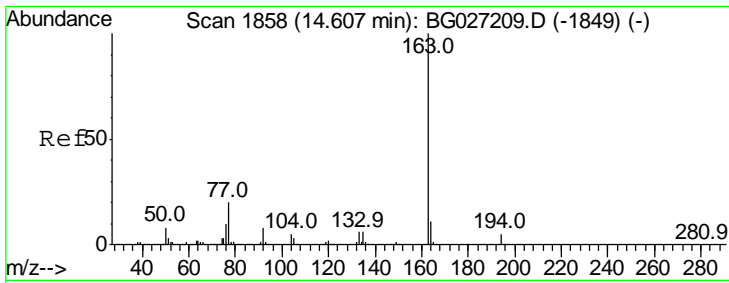
Tgt Ion	Resp	Lower	Upper
172	100		
171	37.7	32.2	48.2
170	25.2	21.8	32.6



#47
 2-Nitroaniline
 Concen: 6.85 ng
 RT: 14.03 min Scan# 1760
 Delta R.T. -0.21 min
 Lab File: BG027413.D
 Acq: 14 Jun 2017 9:34

Tgt Ion	Resp	Lower	Upper
65	100		
92	0.0	49.0	73.4#
138	0.0	58.6	87.8#

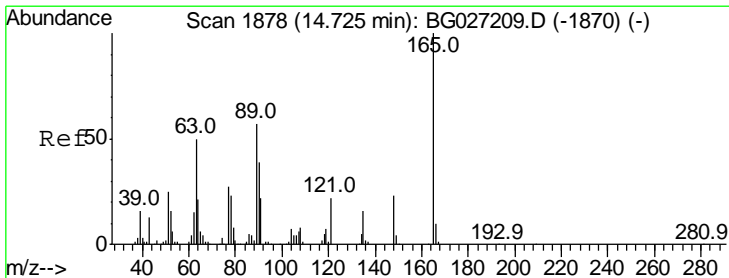
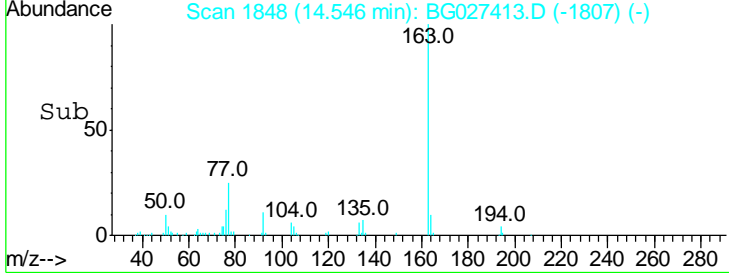
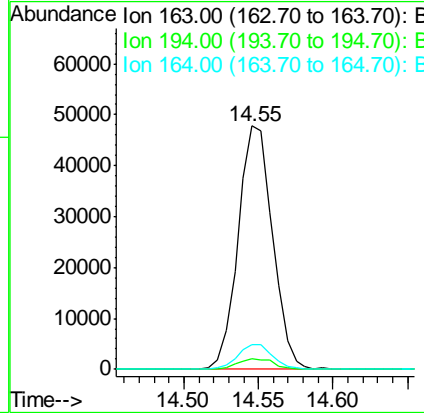
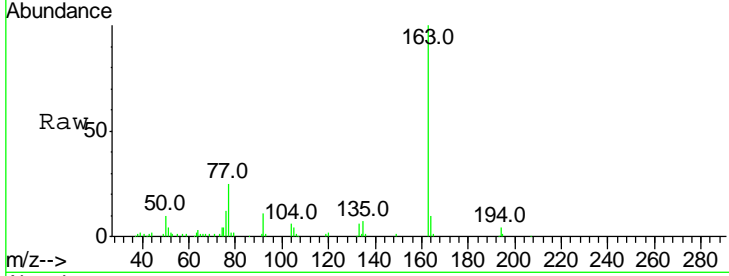




#49
 Dimethylphthalate
 Concen: 6.41 ng
 RT: 14.55 min Scan# 1848
 Delta R.T. -0.06 min
 Lab File: BG027413.D
 Acq: 14 Jun 2017 9:34

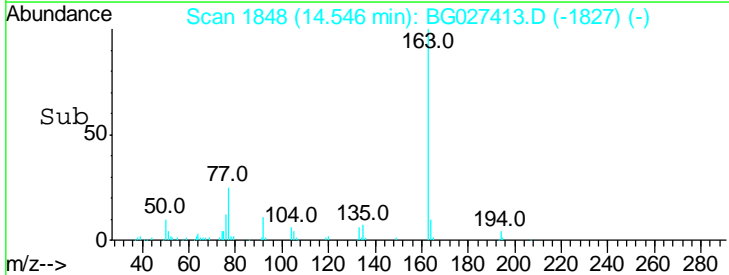
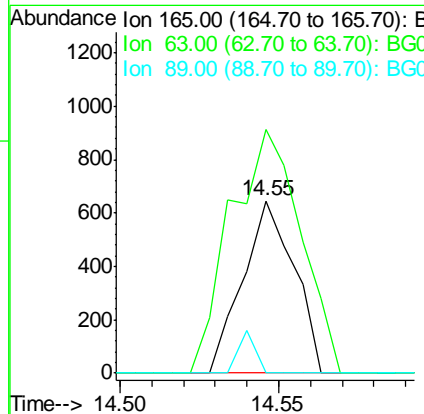
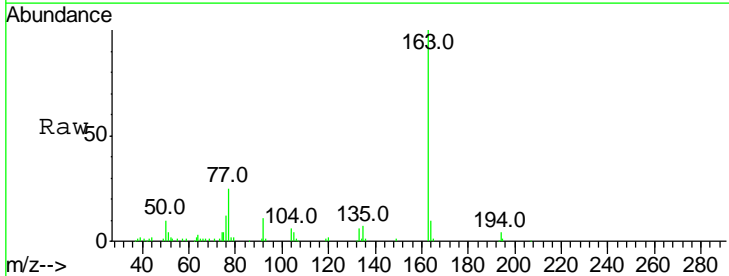
Instrument :
 BNA_G
 ClientSampled :

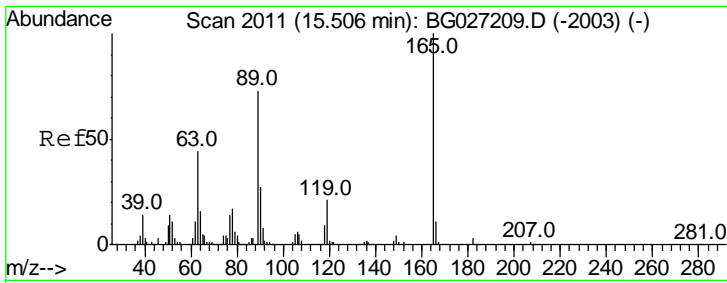
Tgt Ion	Resp	Lower	Upper
163	100		
194	4.3	3.8	5.6
164	9.9	9.3	13.9



#50
 2,6-Dinitrotoluene
 Concen: 5.88 ng
 RT: 14.55 min Scan# 1848
 Delta R.T. -0.18 min
 Lab File: BG027413.D
 Acq: 14 Jun 2017 9:34

Tgt Ion	Resp	Lower	Upper
165	100		
63	141.2	63.9	95.9#
89	0.0	58.6	88.0#

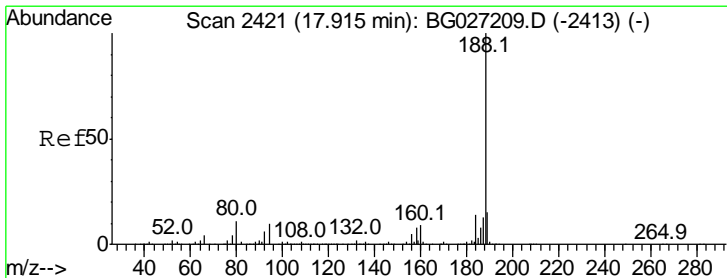
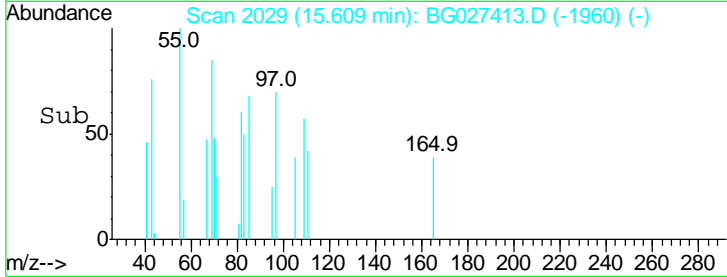
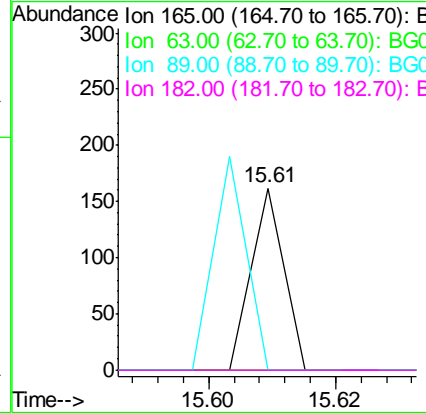
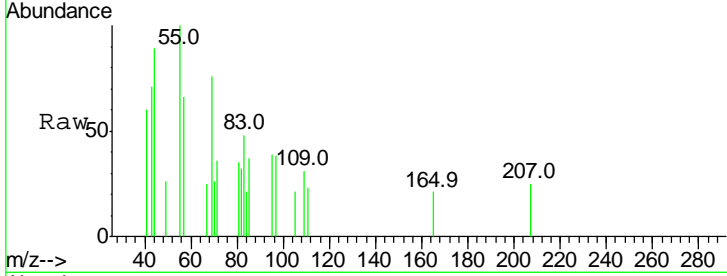




#56
 2,4-Dinitrotoluene
 Concen: 7.00 ng
 RT: 15.61 min Scan# 2029
 Delta R.T. 0.10 min
 Lab File: BG027413.D
 Acq: 14 Jun 2017 9:34

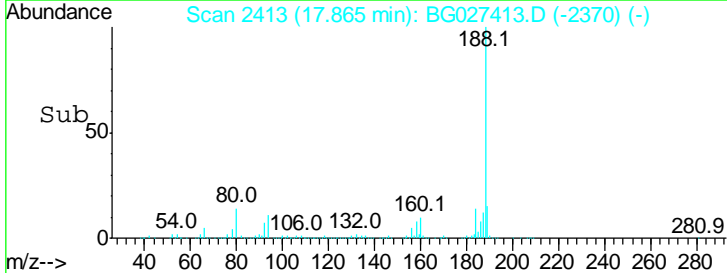
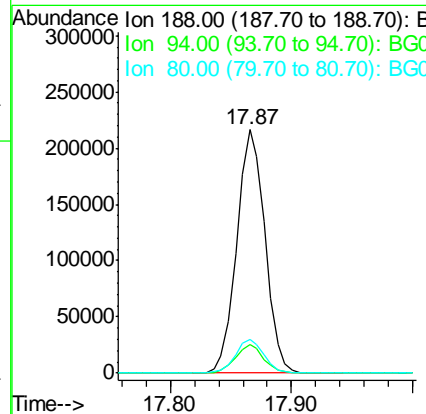
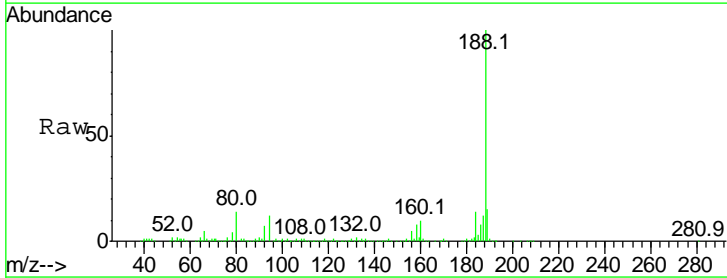
Instrument :
 BNA_G
 ClientSampled :

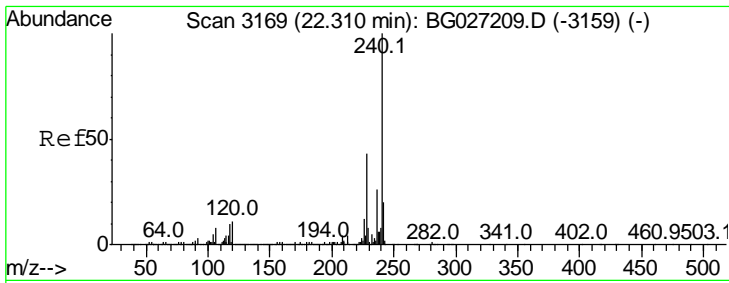
Tgt Ion	Resp	Lower	Upper
165	100		
63	0.0	44.0	66.0#
89	0.0	67.3	100.9#
182	0.0	3.8	5.6#



#63
 Phenanthrene-d10
 Concen: 20.00 ng
 RT: 17.87 min Scan# 2413
 Delta R.T. -0.05 min
 Lab File: BG027413.D
 Acq: 14 Jun 2017 9:34

Tgt Ion	Resp	Lower	Upper
188	100		
94	11.5	5.8	8.8#
80	13.6	7.5	11.3#

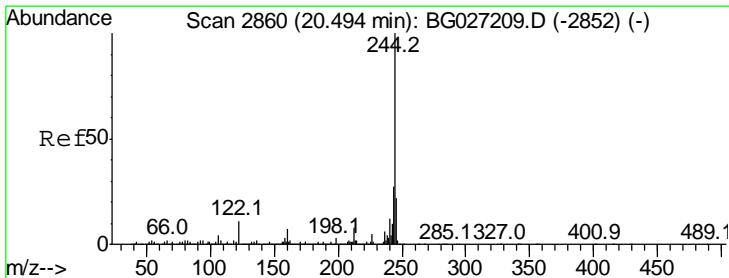
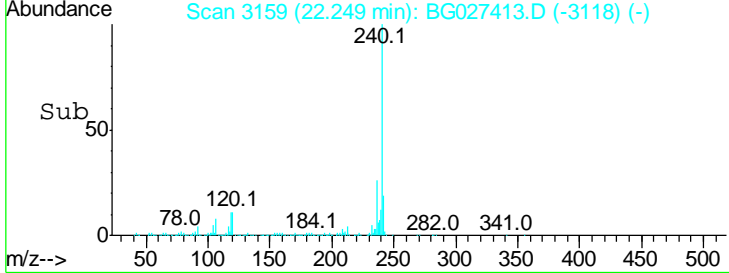
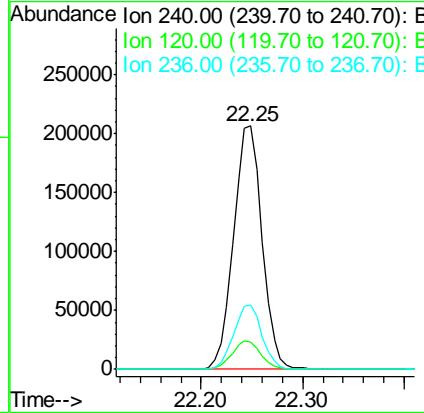
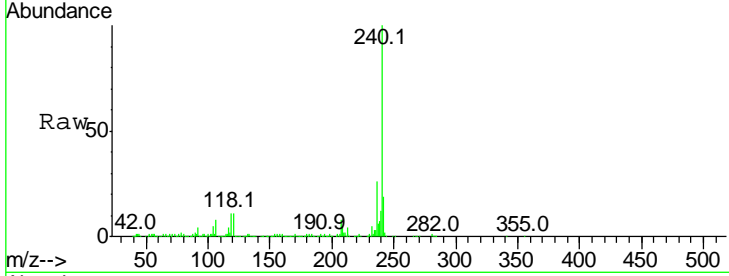




#75
 Chrysene-d12
 Concen: 20.00 ng
 RT: 22.25 min Scan# 3159
 Delta R.T. -0.06 min
 Lab File: BG027413.D
 Acq: 14 Jun 2017 9:34

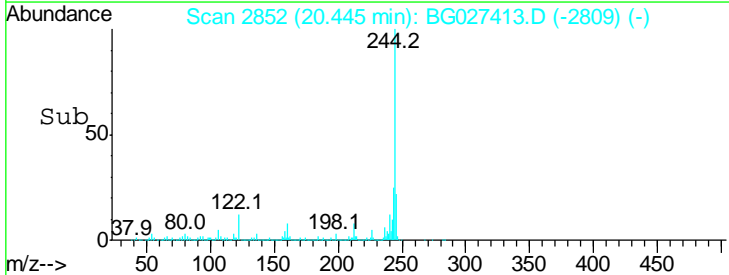
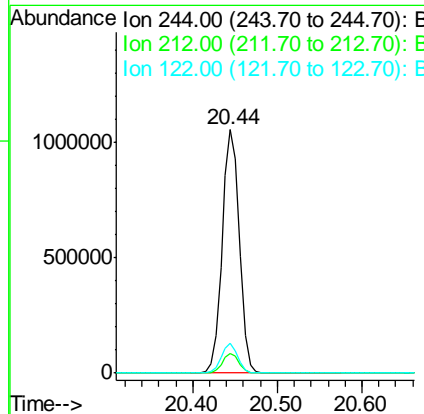
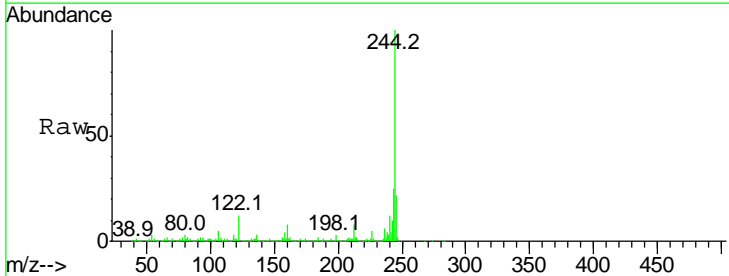
Instrument :
 BNA_G
 ClientSampled :

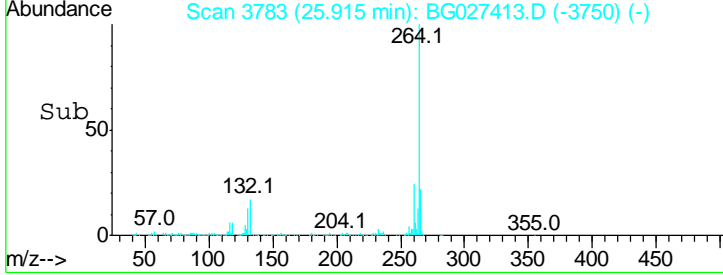
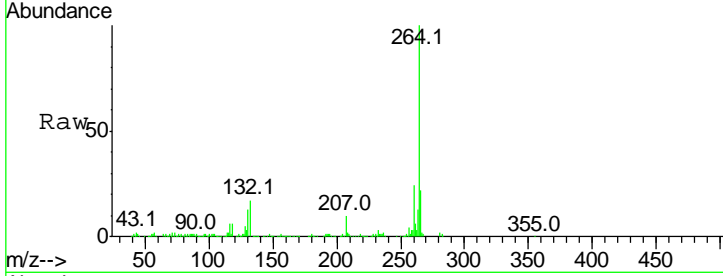
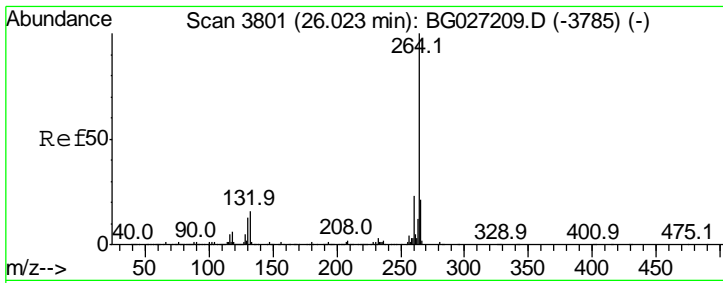
Tgt Ion	Ratio	Lower	Upper
240	100		
120	11.3	5.7	8.5#
236	26.3	22.2	33.4



#78
 Terphenyl-d14
 Concen: 94.53 ng
 RT: 20.44 min Scan# 2852
 Delta R.T. -0.05 min
 Lab File: BG027413.D
 Acq: 14 Jun 2017 9:34

Tgt Ion	Ratio	Lower	Upper
244	100		
212	8.2	10.0	15.0#
122	12.3	8.6	12.8





#86
 Perylene-d12
 Concen: 20.00 ng
 RT: 25.91 min Scan# 3783
 Delta R.T. -0.11 min
 Lab File: BG027413.D
 Acq: 14 Jun 2017 9:34

Instrument :
 BNA_G
 ClientSampled :

Tot Ion: 264 Resp: 389451

Ion	Ratio	Lower	Upper
264	100		
260	24.3	21.8	32.8
265	21.7	18.2	27.4

