

Data Path : Z:\HPCHEM1\BNA G\DATA\BG061417\
 Data File : BG027438.D
 Acq On : 15 Jun 2017 5:45
 Operator : SJ/MA
 Sample : I3635-15
 Misc :
 ALS Vial : 22 Sample Multiplier: 1

Instrument :
 BNA_G
 ClientSampleId :

Quant Time: Jun 15 07:02:20 2017
 Quant Method : Z:\HPCHEM1\BNA G\METHODS\8270-BG061417.M
 Quant Title : ASP BNA STANDARDS FOR 5 POINT CALIBRATION
 QLast Update : Wed Jun 14 19:09:08 2017
 Response via : Initial Calibration

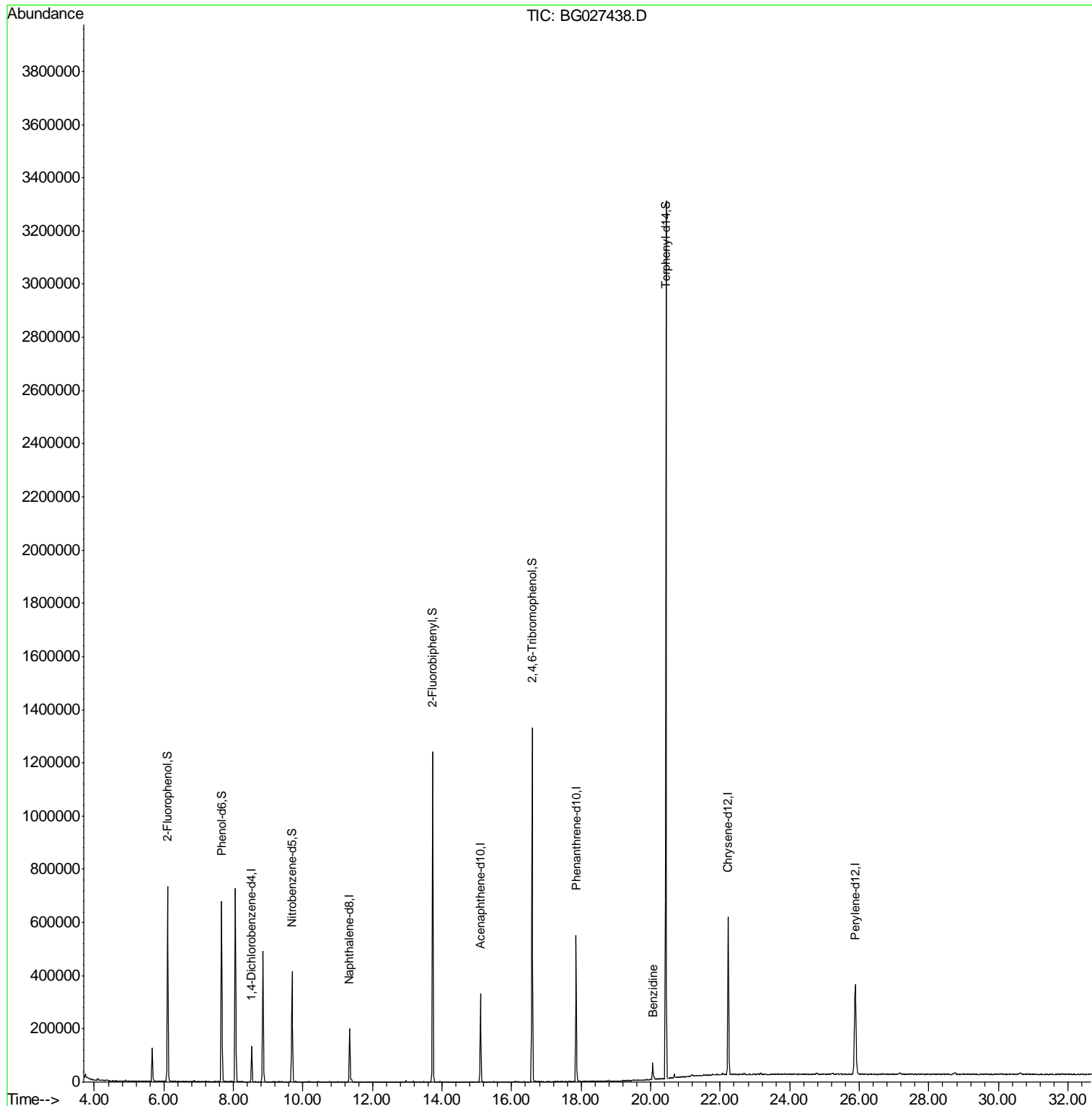
| Internal Standards | R.T. | QIon | Response | Conc | Units | Dev(Min) |
|-----------------------------|-------|------|----------|--------|-------|----------|
| 1) 1,4-Dichlorobenzene-d4 | 8.53 | 152 | 37703 | 20.00 | ng | 0.00 |
| 21) Naphthalene-d8 | 11.34 | 136 | 172794 | 20.00 | ng | 0.00 |
| 38) Acenaphthene-d10 | 15.11 | 164 | 114253 | 20.00 | ng | 0.00 |
| 63) Phenanthrene-d10 | 17.86 | 188 | 340491 | 20.00 | ng | 0.00 |
| 75) Chrysene-d12 | 22.23 | 240 | 399077 | 20.00 | ng | 0.00 |
| 86) Perylene-d12 | 25.88 | 264 | 384556 | 20.00 | ng | -0.01 |
| System Monitoring Compounds | | | | | | |
| 5) 2-Fluorophenol | 6.11 | 112 | 325685 | 122.08 | ng | 0.00 |
| 7) Phenol-d6 | 7.66 | 99 | 429735 | 104.81 | ng | 0.00 |
| 23) Nitrobenzene-d5 | 9.68 | 82 | 283472 | 83.64 | ng | 0.00 |
| 41) 2,4,6-Tribromophenol | 16.59 | 330 | 268239 | 156.43 | ng | 0.00 |
| 44) 2-Fluorobiphenyl | 13.73 | 172 | 644001 | 81.43 | ng | 0.00 |
| 78) Terphenyl-d14 | 20.44 | 244 | 1456598 | 93.55 | ng | 0.00 |
| Target Compounds | | | | | | Qvalue |
| 76) Benzidine | 20.06 | 184 | 41115 | 4.70 | ng | 96 |

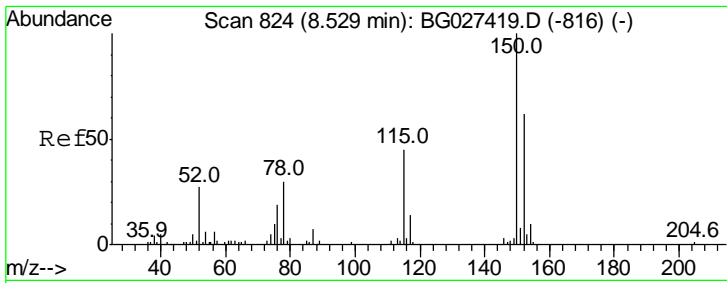
(#) = qualifier out of range (m) = manual integration (+) = signals summed

Data Path : Z:\HPCHEM1\BNA G\DATA\BG061417\
Data File : BG027438.D
Acq On : 15 Jun 2017 5:45
Operator : SJ/MA
Sample : I3635-15
Misc :
ALS Vial : 22 Sample Multiplier: 1

Instrument :
BNA_G
ClientSampleId :

Quant Time: Jun 15 07:02:20 2017
Quant Method : Z:\HPCHEM1\BNA G\METHODS\8270-BG061417.M
Quant Title : ASP BNA STANDARDS FOR 5 POINT CALIBRATION
QLast Update : Wed Jun 14 19:09:08 2017
Response via : Initial Calibration

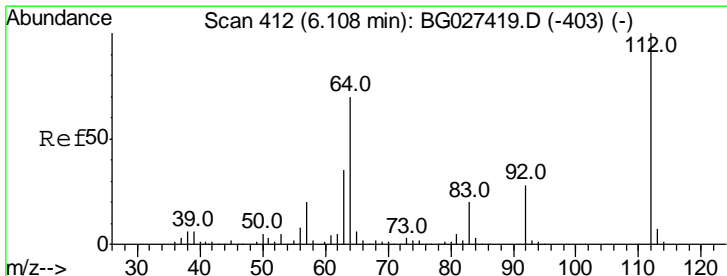
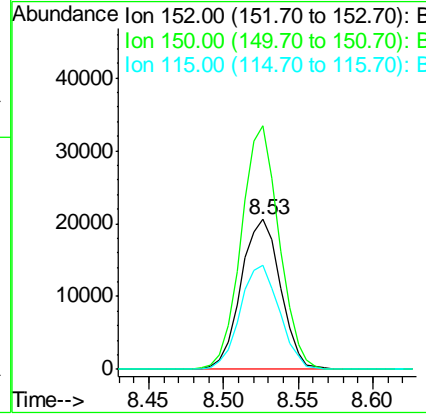
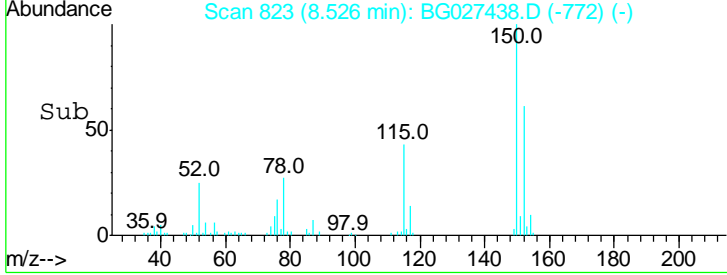
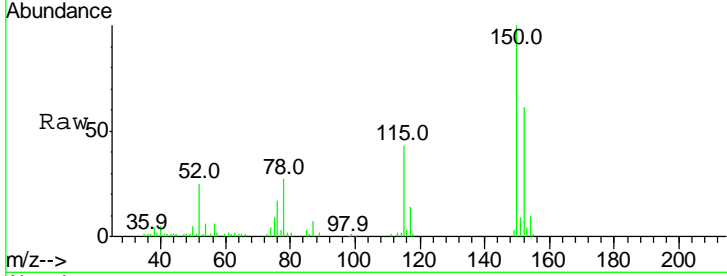




#1
 1,4-Dichlorobenzene-d4
 Concen: 20.00 ng
 RT: 8.53 min Scan# 823
 Delta R.T. -0.00 min
 Lab File: BG027438.D
 Acq: 15 Jun 2017 5:45

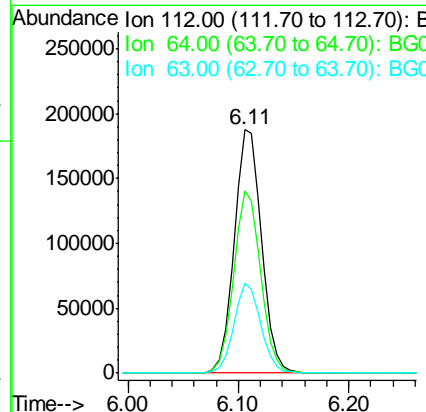
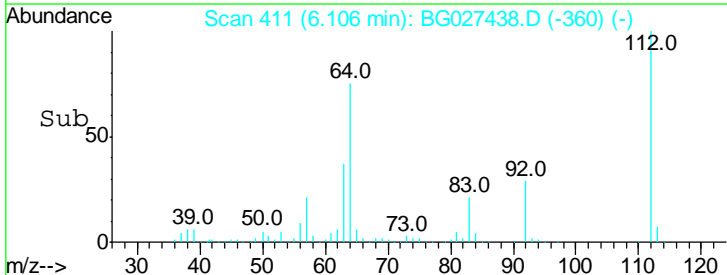
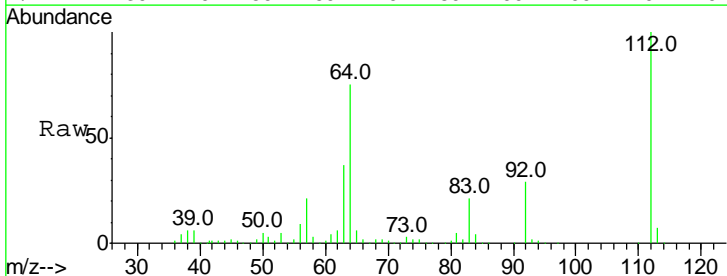
Instrument :
 BNA_G
 ClientSampled :

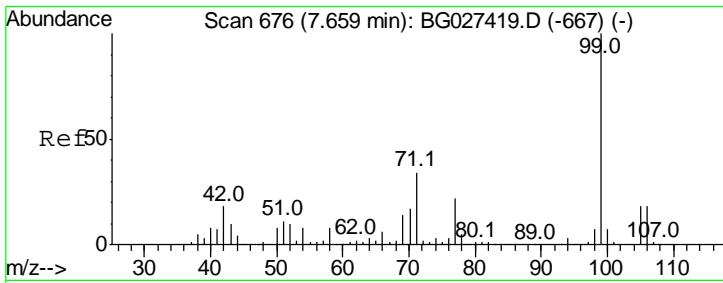
| Tgt Ion | Resp | Lower | Upper |
|---------|-------|-------|-------|
| 152 | 37703 | | |
| 152 | 100 | | |
| 150 | 162.8 | 114.0 | 171.0 |
| 115 | 69.4 | 48.1 | 72.1 |



#5
 2-Fluorophenol
 Concen: 122.08 ng
 RT: 6.11 min Scan# 411
 Delta R.T. -0.00 min
 Lab File: BG027438.D
 Acq: 15 Jun 2017 5:45

| Tgt Ion | Resp | Lower | Upper |
|---------|--------|-------|-------|
| 112 | 325685 | | |
| 112 | 100 | | |
| 64 | 74.9 | 61.8 | 92.6 |
| 63 | 36.8 | 37.2 | 55.8# |

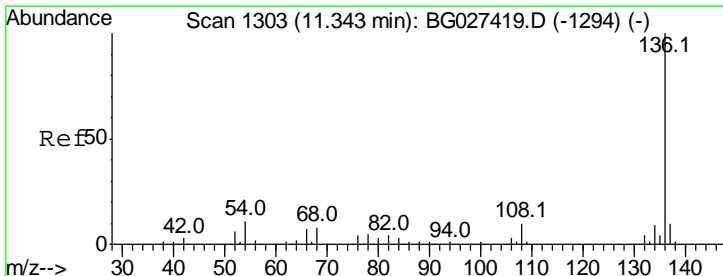
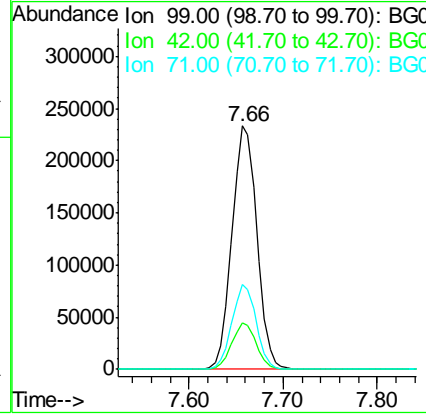
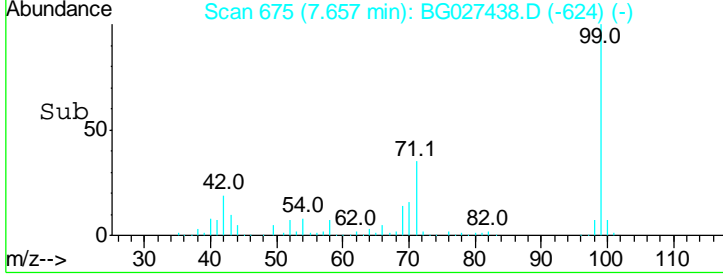
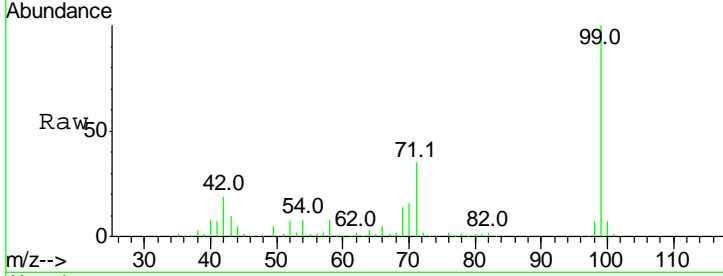




#7
 Phenol-d6
 Concen: 104.81 ng
 RT: 7.66 min Scan# 675
 Delta R.T. -0.00 min
 Lab File: BG027438.D
 Acq: 15 Jun 2017 5:45

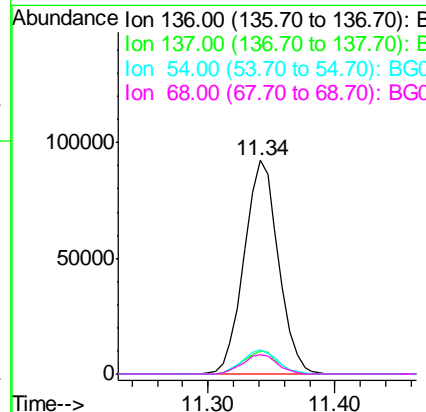
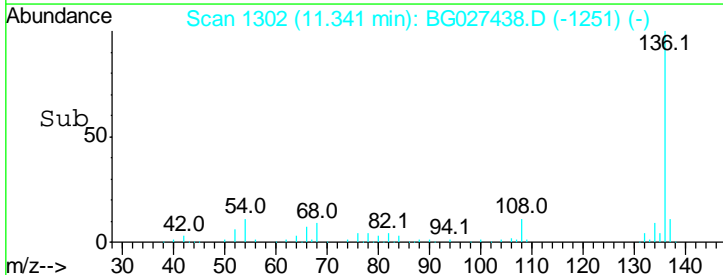
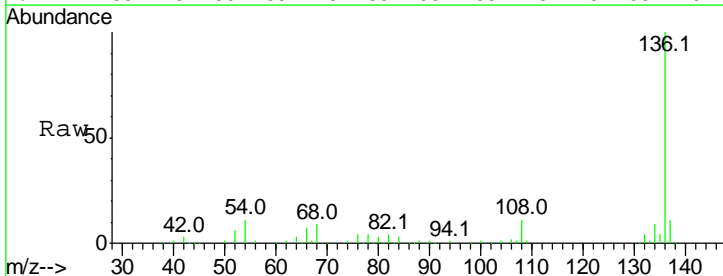
Instrument :
 BNA_G
 ClientSampled :

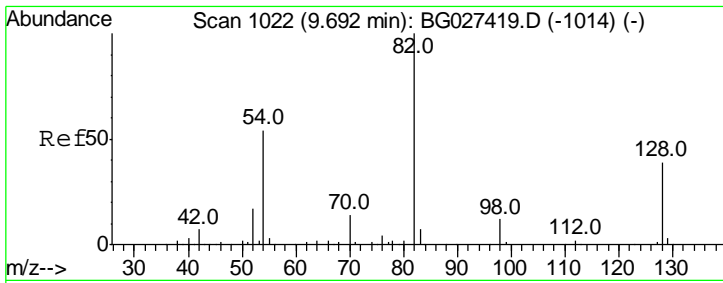
| Tgt Ion | Resp | Lower | Upper |
|---------|------|-------|-------|
| 99 | 100 | | |
| 42 | 19.0 | 20.5 | 30.7# |
| 71 | 34.7 | 37.6 | 56.4# |



#21
 Naphthalene-d8
 Concen: 20.00 ng
 RT: 11.34 min Scan# 1302
 Delta R.T. -0.00 min
 Lab File: BG027438.D
 Acq: 15 Jun 2017 5:45

| Tgt Ion | Resp | Lower | Upper |
|---------|------|-------|-------|
| 136 | 100 | | |
| 137 | 11.1 | 8.9 | 13.3 |
| 54 | 11.4 | 9.3 | 13.9 |
| 68 | 8.9 | 5.1 | 7.7# |

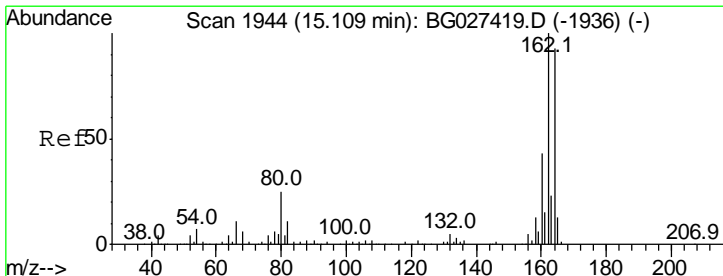
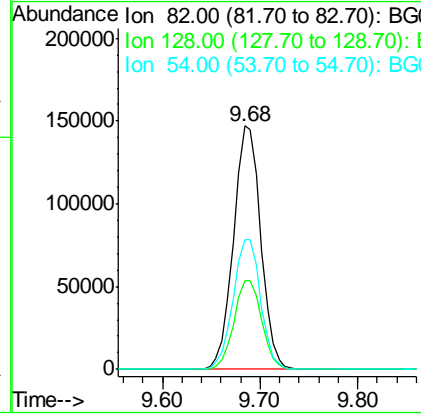
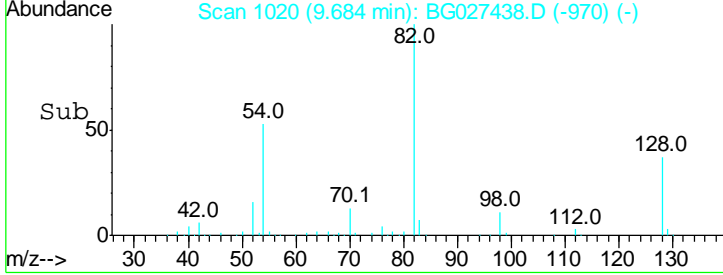
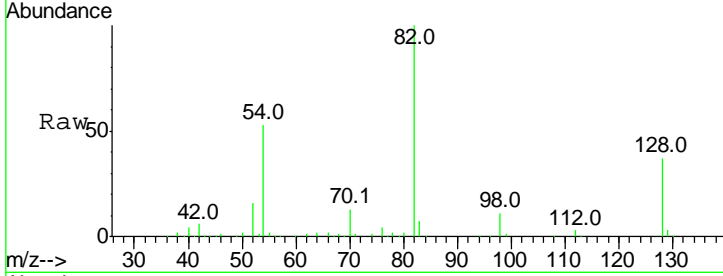




#23
 Nitrobenzene-d5
 Concen: 83.64 ng
 RT: 9.68 min Scan# 1020
 Delta R.T. -0.01 min
 Lab File: BG027438.D
 Acq: 15 Jun 2017 5:45

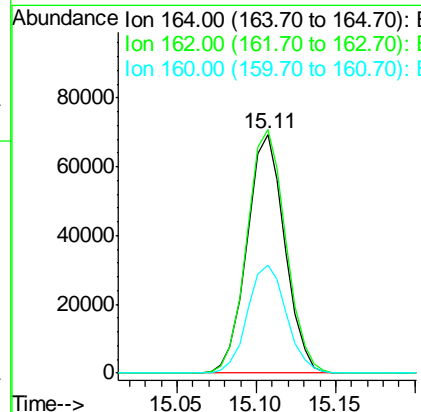
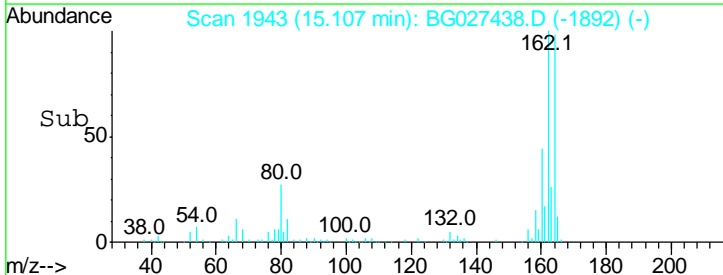
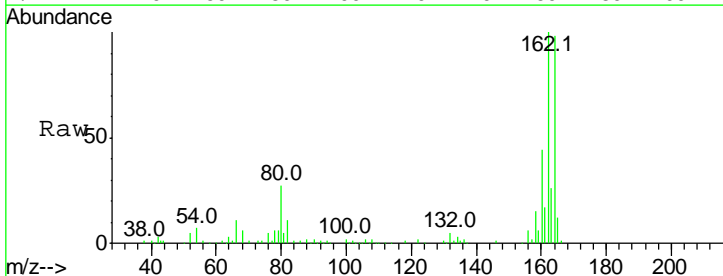
Instrument :
 BNA_G
 ClientSampled :

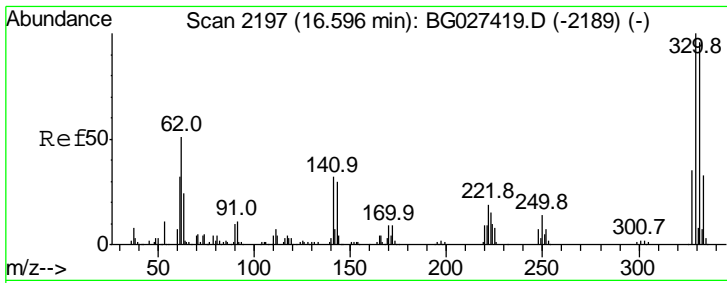
| Tgt Ion | Resp | Lower | Upper |
|---------|------|-------|-------|
| 82 | 100 | | |
| 128 | 36.7 | 26.4 | 39.6 |
| 54 | 53.4 | 49.4 | 74.2 |



#38
 Acenaphthene-d10
 Concen: 20.00 ng
 RT: 15.11 min Scan# 1943
 Delta R.T. -0.00 min
 Lab File: BG027438.D
 Acq: 15 Jun 2017 5:45

| Tgt Ion | Resp | Lower | Upper |
|---------|-------|-------|-------|
| 164 | 100 | | |
| 162 | 101.9 | 85.1 | 127.7 |
| 160 | 45.3 | 34.7 | 52.1 |

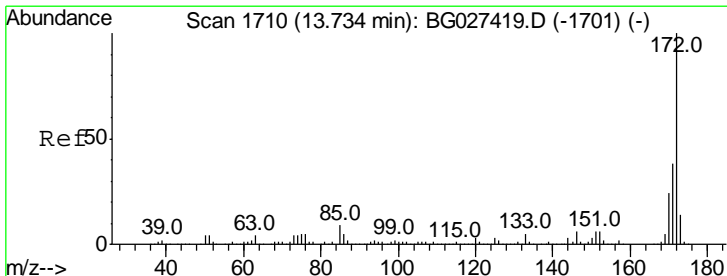
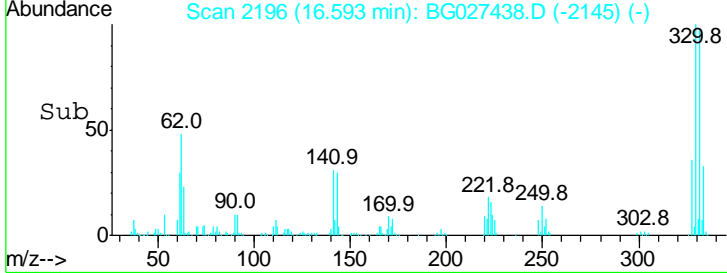
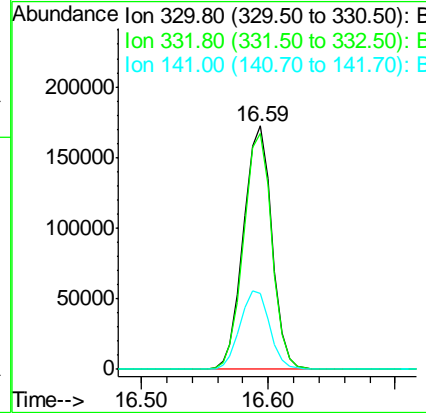
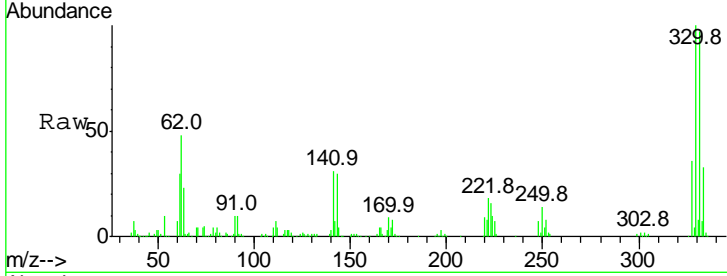




#41
 2,4,6-Tribromophenol
 Concen: 156.43 ng
 RT: 16.59 min Scan# 2196
 Delta R.T. -0.00 min
 Lab File: BG027438.D
 Acq: 15 Jun 2017 5:45

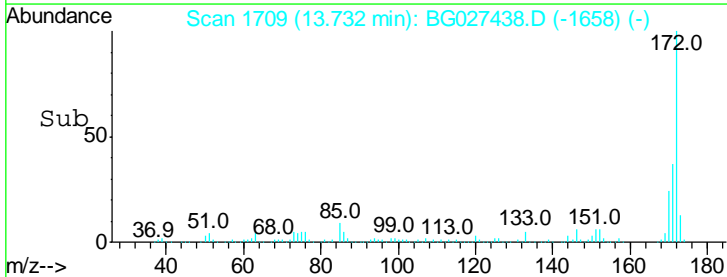
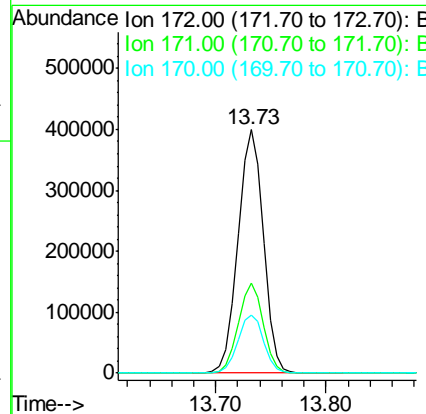
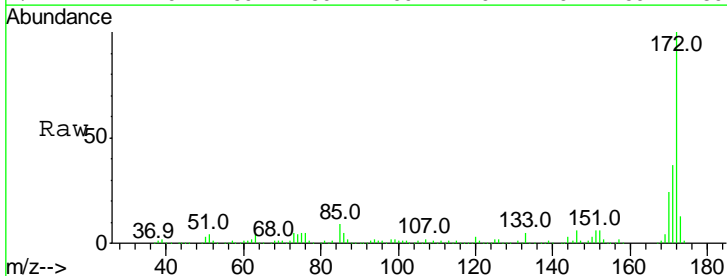
Instrument :
 BNA_G
 ClientSampled :

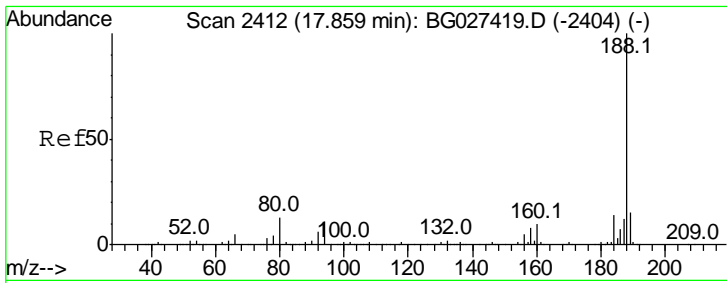
| Tgt Ion | Resp | Lower | Upper |
|---------|------|-------|-------|
| 330 | 100 | | |
| 332 | 96.5 | 77.3 | 115.9 |
| 141 | 33.4 | 32.1 | 48.1 |



#44
 2-Fluorobiphenyl
 Concen: 81.43 ng
 RT: 13.73 min Scan# 1709
 Delta R.T. -0.00 min
 Lab File: BG027438.D
 Acq: 15 Jun 2017 5:45

| Tgt Ion | Resp | Lower | Upper |
|---------|------|-------|-------|
| 172 | 100 | | |
| 171 | 37.1 | 32.2 | 48.2 |
| 170 | 24.1 | 21.8 | 32.6 |

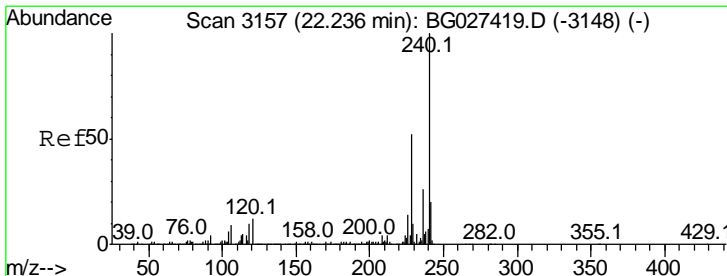
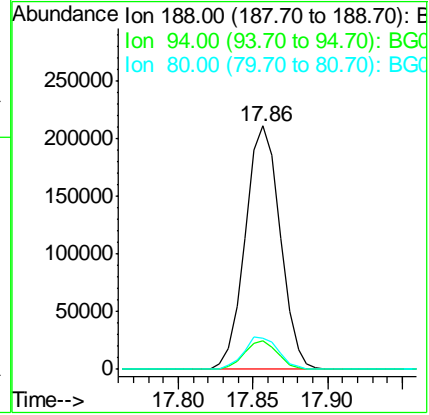
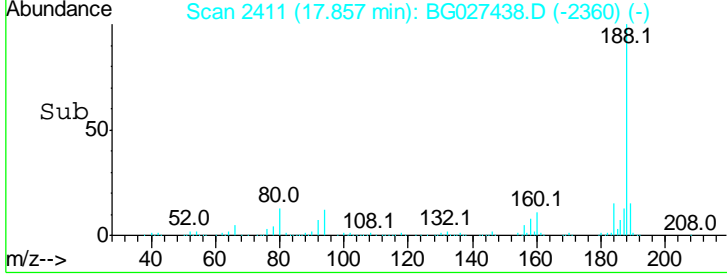
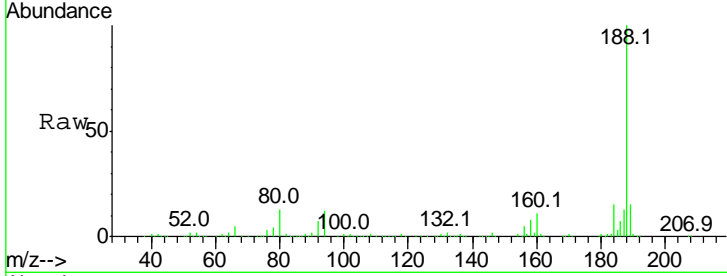




#63
 Phenanthrene-d10
 Concen: 20.00 ng
 RT: 17.86 min Scan# 2411
 Delta R.T. -0.00 min
 Lab File: BG027438.D
 Acq: 15 Jun 2017 5:45

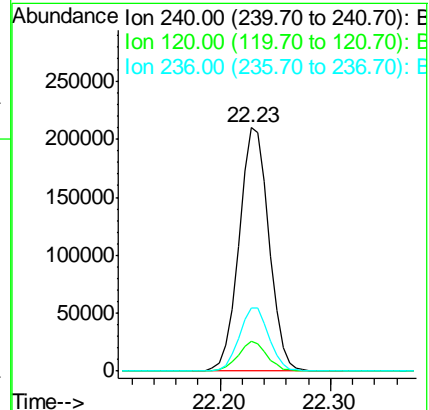
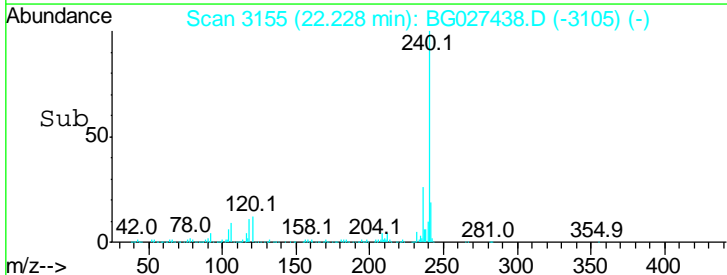
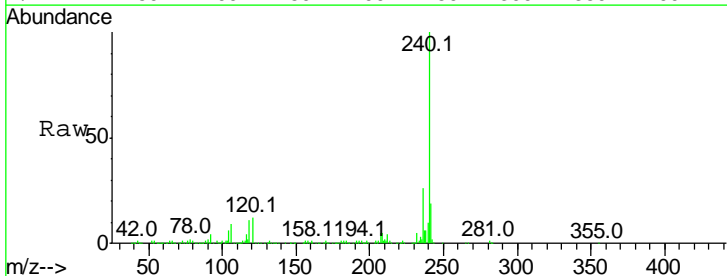
Instrument :
 BNA_G
 ClientSampled :

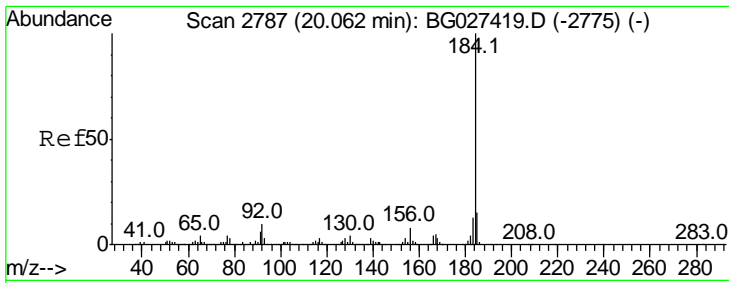
| Tgt Ion | Resp | Lower | Upper |
|---------|------|-------|-------|
| 188 | 100 | | |
| 94 | 11.9 | 5.8 | 8.8# |
| 80 | 12.9 | 7.5 | 11.3# |



#75
 Chrysene-d12
 Concen: 20.00 ng
 RT: 22.23 min Scan# 3155
 Delta R.T. -0.01 min
 Lab File: BG027438.D
 Acq: 15 Jun 2017 5:45

| Tgt Ion | Resp | Lower | Upper |
|---------|------|-------|-------|
| 240 | 100 | | |
| 120 | 12.1 | 5.7 | 8.5# |
| 236 | 26.2 | 22.2 | 33.4 |

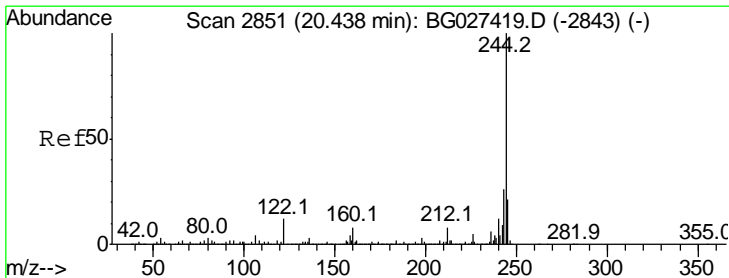
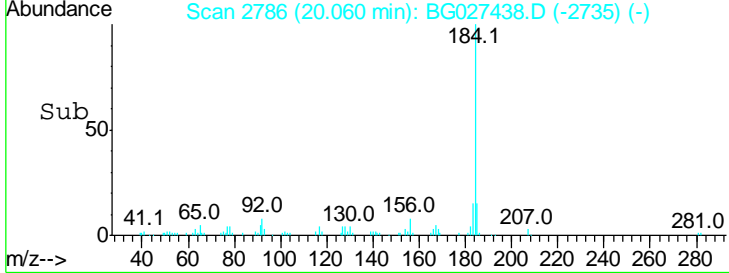
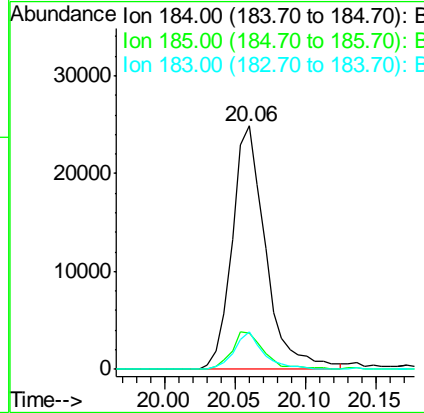
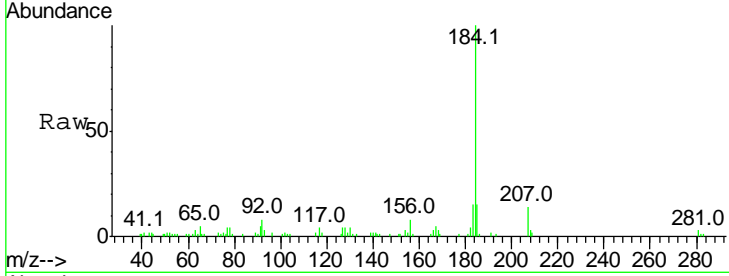




#76
Benzidine
Concen: 4.70 ng
RT: 20.06 min Scan# 2786
Delta R.T. -0.00 min
Lab File: BG027438.D
Acq: 15 Jun 2017 5:45

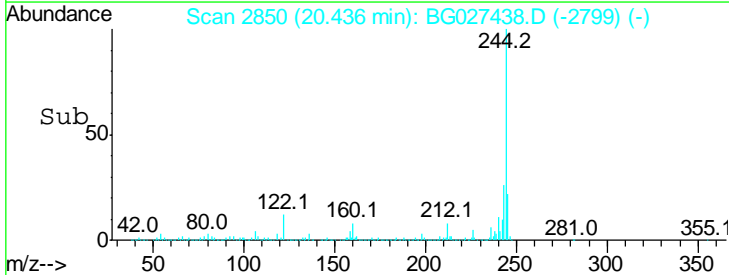
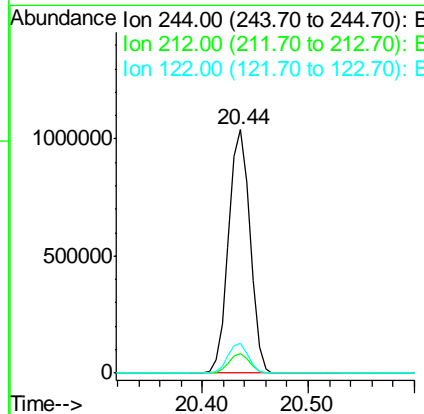
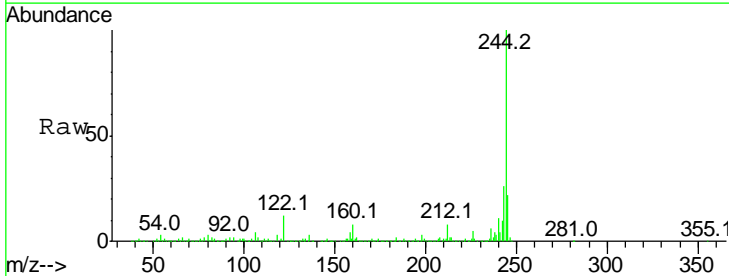
Instrument :
BNA_G
ClientSampled :

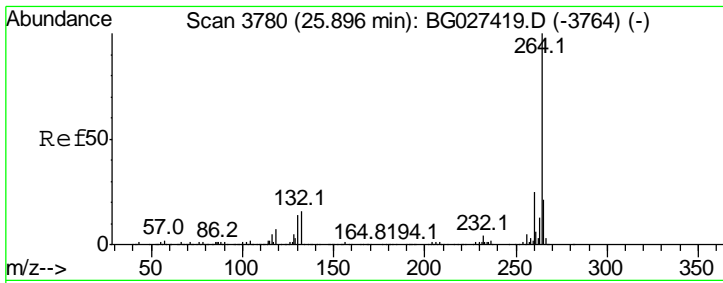
| Tgt Ion | Resp | Lower | Upper |
|---------|-------|-------|-------|
| 184 | 41115 | | |
| 185 | 14.9 | 13.0 | 19.6 |
| 183 | 15.4 | 11.0 | 16.6 |



#78
Terphenyl-d14
Concen: 93.55 ng
RT: 20.44 min Scan# 2850
Delta R.T. -0.00 min
Lab File: BG027438.D
Acq: 15 Jun 2017 5:45

| Tgt Ion | Resp | Lower | Upper |
|---------|---------|-------|-------|
| 244 | 1456598 | | |
| 212 | 8.2 | 10.0 | 15.0# |
| 122 | 12.1 | 8.6 | 12.8 |





#86
 Perylene-d12
 Concen: 20.00 ng
 RT: 25.88 min Scan# 3777
 Delta R.T. -0.01 min
 Lab File: BG027438.D
 Acq: 15 Jun 2017 5:45

Instrument :
 BNA_G
 ClientSampled :

| Tot Ion | Ratio | Lower | Upper |
|---------|-------|-------|-------|
| 264 | 100 | | |
| 260 | 24.5 | 21.8 | 32.8 |
| 265 | 22.3 | 18.2 | 27.4 |

