

Data Path : Z:\svoasrv\HPCHEM1\BNA\_G\Data\BG061422\  
 Data File : BG053910.D  
 Acq On : 14 Jun 2022 20:45  
 Operator : CG/JU  
 Sample : N3329-02  
 Misc :  
 ALS Vial : 13 Sample Multiplier: 1

Instrument :  
 BNA\_G  
 ClientSampleId :  
 PALMYRA-RT-73-COMP-1

Quant Time: Jun 15 03:04:29 2022  
 Quant Method : Z:\svoasrv\HPCHEM1\BNA\_G\Methods\8270-BG061322.M  
 Quant Title : ASP BNA STANDARDS FOR 5 POINT CALIBRATION  
 QLast Update : Mon Jun 13 15:49:31 2022  
 Response via : Initial Calibration

Compound	R.T.	QIon	Response	Conc	Units	Dev(Min)
Internal Standards						
1) 1,4-Dichlorobenzene-d4	8.085	152	18720	20.000	ng	0.00
21) Naphthalene-d8	10.894	136	71012	20.000	ng	# 0.00
39) Acenaphthene-d10	14.707	164	55235	20.000	ng	0.00
64) Phenanthrene-d10	17.451	188	151500	20.000	ng	# 0.00
76) Chrysene-d12	21.722	240	191598	20.000	ng	0.00
86) Perylene-d12	24.983	264	194942	20.000	ng	0.00
System Monitoring Compounds						
5) 2-Fluorophenol	5.653	112	150696	153.909	ng	0.00
7) Phenol-d6	7.239	99	181053	136.309	ng	0.00
23) Nitrobenzene-d5	9.243	82	142219	112.547	ng	0.00
42) 2,4,6-Tribromophenol	16.194	330	161271	181.724	ng	0.00
45) 2-Fluorobiphenyl	13.332	172	412915	108.705	ng	0.00
79) Terphenyl-d14	20.060	244	1017544	106.964	ng	0.00

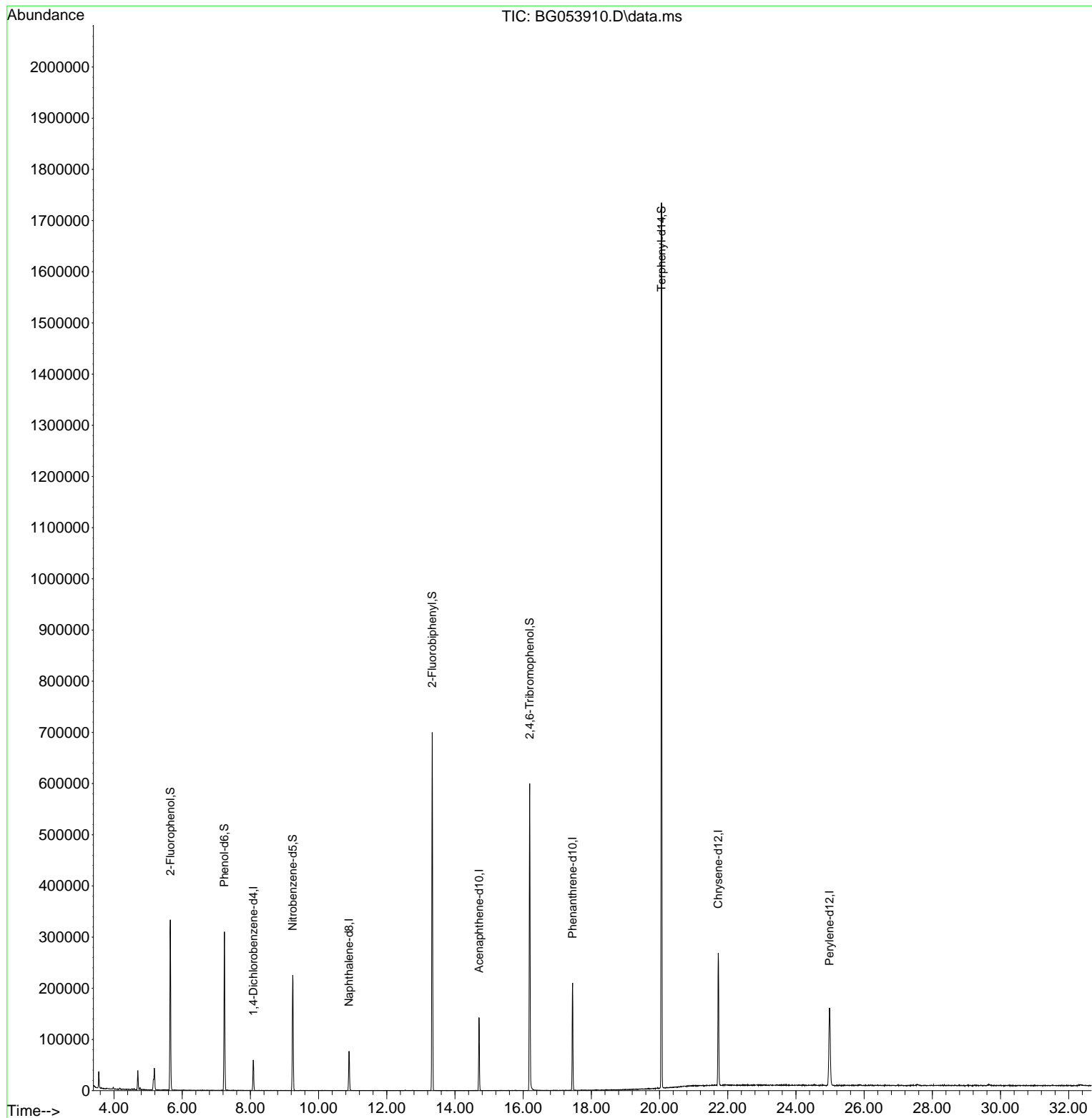
Target Compounds Qvalue

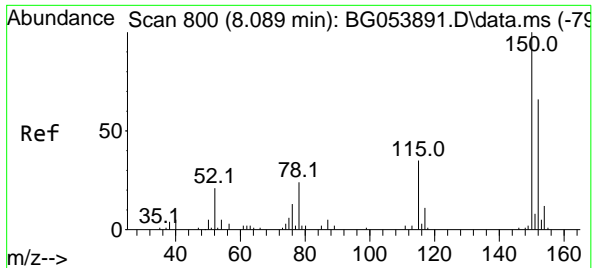
(#) = qualifier out of range (m) = manual integration (+) = signals summed

Data Path : Z:\svoasrv\HPCHEM1\BNA\_G\Data\BG061422\  
Data File : BG053910.D  
Acq On : 14 Jun 2022 20:45  
Operator : CG/JU  
Sample : N3329-02  
Misc :  
ALS Vial : 13 Sample Multiplier: 1

Instrument :  
BNA\_G  
ClientSampleId :  
PALMYRA-RT-73-COMP-1

Quant Time: Jun 15 03:04:29 2022  
Quant Method : Z:\svoasrv\HPCHEM1\BNA\_G\Methods\8270-BG061322.M  
Quant Title : ASP BNA STANDARDS FOR 5 POINT CALIBRATION  
QLast Update : Mon Jun 13 15:49:31 2022  
Response via : Initial Calibration

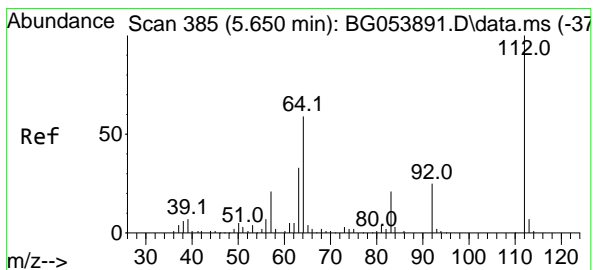
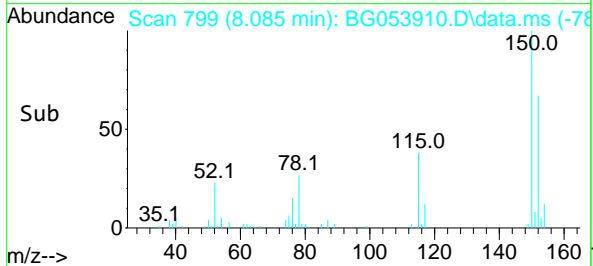
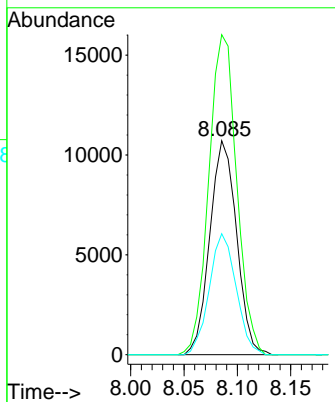
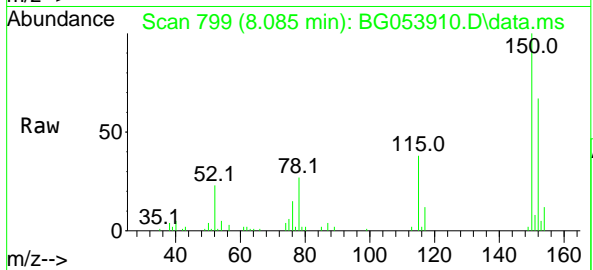




#1  
 1,4-Dichlorobenzene-d4  
 Concen: 20.000 ng  
 RT: 8.085 min Scan# 799  
 Delta R.T. -0.004 min  
 Lab File: BG053910.D  
 Acq: 14 Jun 2022 20:45

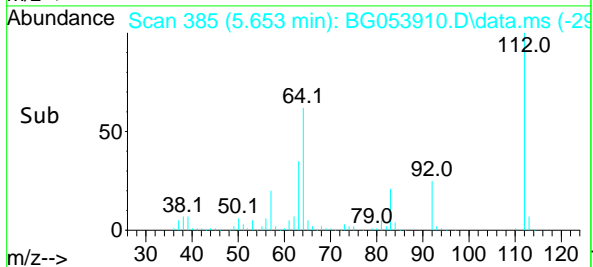
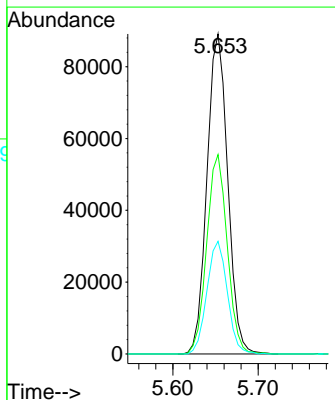
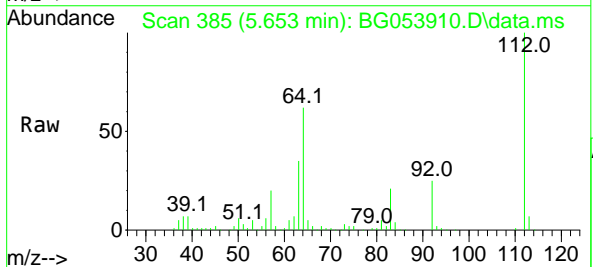
Instrument : BNA\_G  
 ClientSampleId : PALMYRA-RT-73-COMP-1

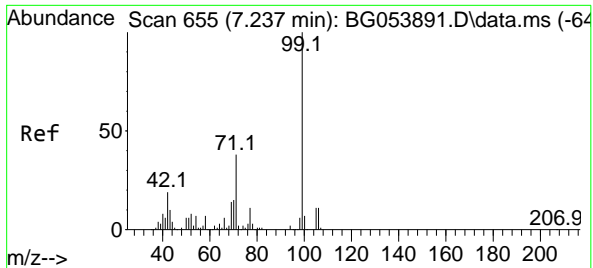
Tgt Ion:152 Resp: 18720  
 Ion Ratio Lower Upper  
 152 100  
 150 149.6 131.6 197.4  
 115 56.5 50.9 76.3



#5  
 2-Fluorophenol  
 Concen: 153.909 ng  
 RT: 5.653 min Scan# 385  
 Delta R.T. 0.003 min  
 Lab File: BG053910.D  
 Acq: 14 Jun 2022 20:45

Tgt Ion:112 Resp: 150696  
 Ion Ratio Lower Upper  
 112 100  
 64 62.3 55.1 82.7  
 63 35.2 30.4 45.6



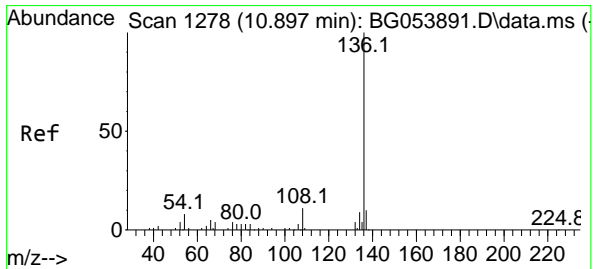
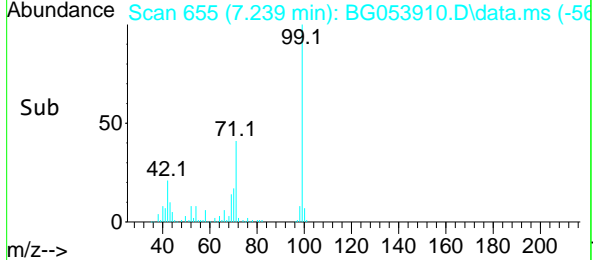
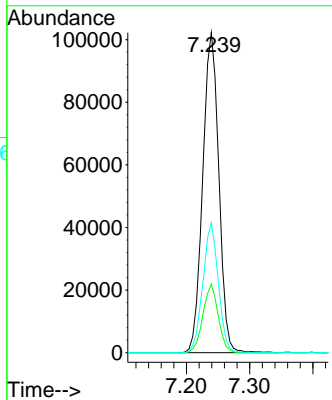
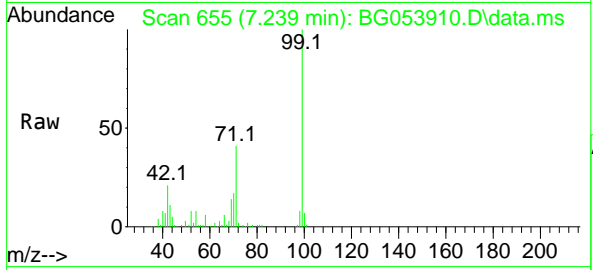


#7  
 Phenol-d6  
 Concen: 136.309 ng  
 RT: 7.239 min Scan# 61  
 Delta R.T. 0.003 min  
 Lab File: BG053910.D  
 Acq: 14 Jun 2022 20:45

Instrument :  
 BNA\_G  
 ClientSampleId :  
 PALMYRA-RT-73-COMP-1

Tgt Ion: 99 Resp: 181053

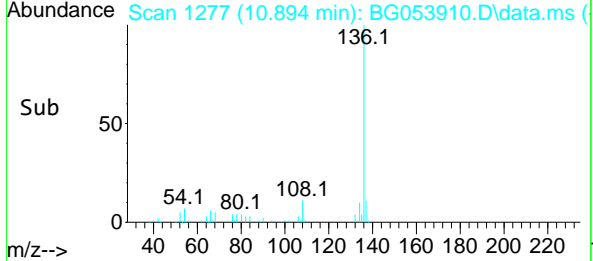
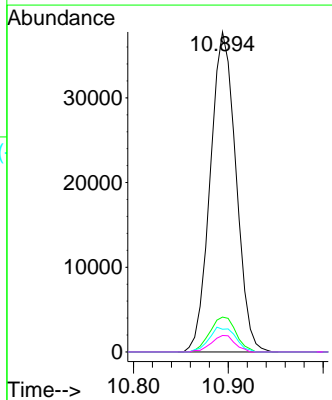
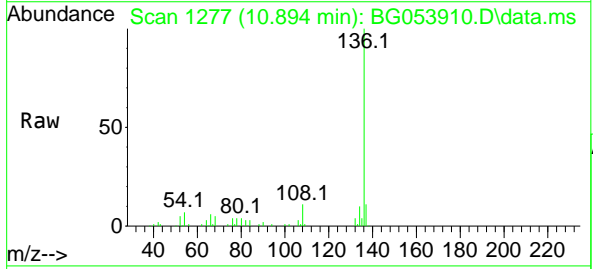
Ion	Ratio	Lower	Upper
99	100		
42	21.5	17.0	25.6
71	40.5	33.8	50.8

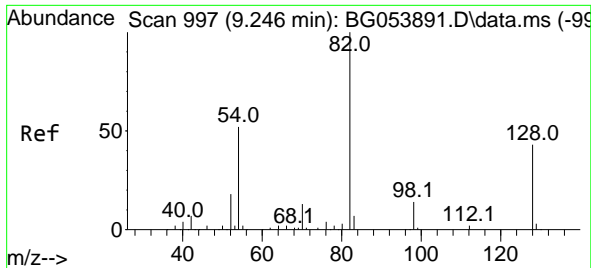


#21  
 Naphthalene-d8  
 Concen: 20.000 ng  
 RT: 10.894 min Scan# 1277  
 Delta R.T. -0.003 min  
 Lab File: BG053910.D  
 Acq: 14 Jun 2022 20:45

Tgt Ion: 136 Resp: 71012

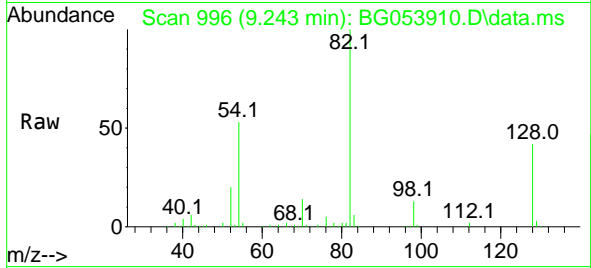
Ion	Ratio	Lower	Upper
136	100		
137	10.9	8.5	12.7
54	7.1	7.4	11.2#
68	5.1	4.9	7.3



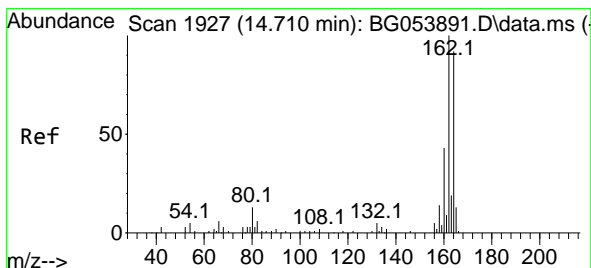
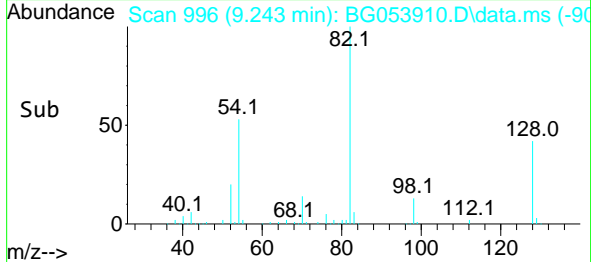
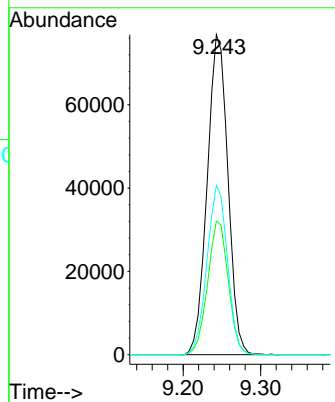


#23  
 Nitrobenzene-d5  
 Concen: 112.547 ng  
 RT: 9.243 min Scan# 91  
 Delta R.T. -0.003 min  
 Lab File: BG053910.D  
 Acq: 14 Jun 2022 20:45

Instrument :  
 BNA\_G  
 ClientSampleId :  
 PALMYRA-RT-73-COMP-1

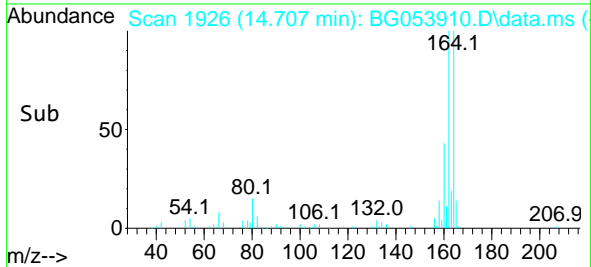
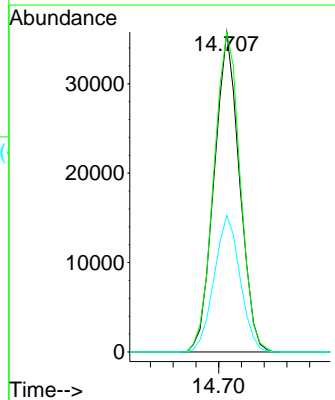
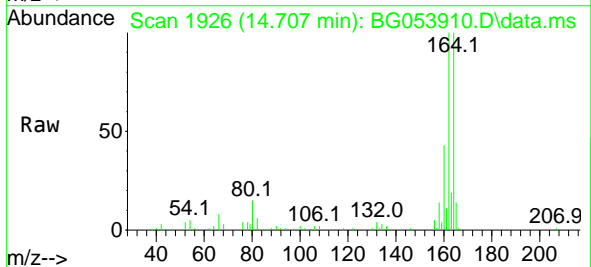


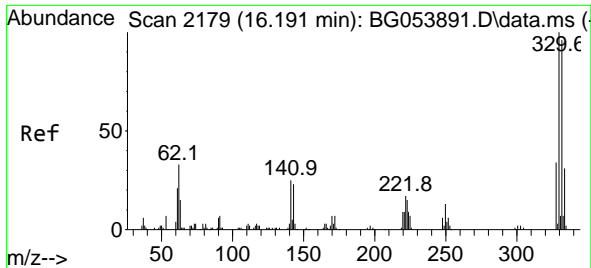
Tgt Ion: 82 Resp: 142219  
 Ion Ratio Lower Upper  
 82 100  
 128 41.8 27.9 41.9  
 54 52.9 41.2 61.8



#39  
 Acenaphthene-d10  
 Concen: 20.000 ng  
 RT: 14.707 min Scan# 1926  
 Delta R.T. -0.003 min  
 Lab File: BG053910.D  
 Acq: 14 Jun 2022 20:45

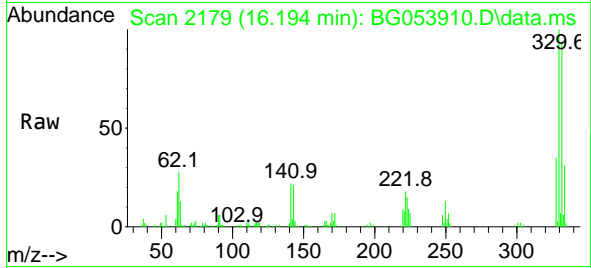
Tgt Ion: 164 Resp: 55235  
 Ion Ratio Lower Upper  
 164 100  
 162 99.8 82.3 123.5  
 160 42.6 34.2 51.2



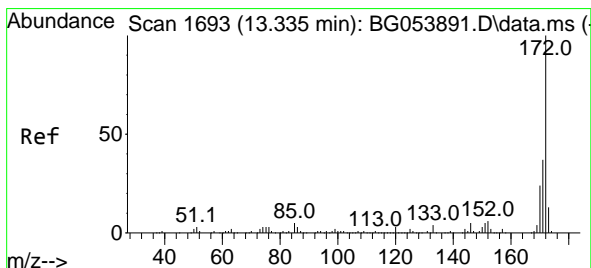
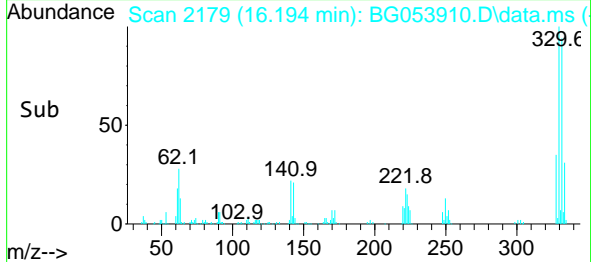
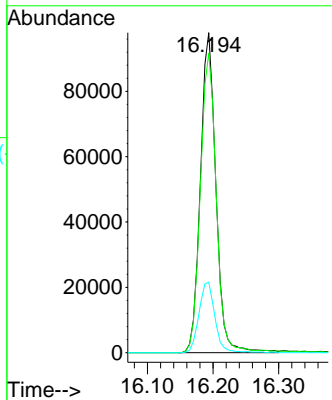


#42  
 2,4,6-Tribromophenol  
 Concen: 181.724 ng  
 RT: 16.194 min Scan# 2179  
 Delta R.T. 0.003 min  
 Lab File: BG053910.D  
 Acq: 14 Jun 2022 20:45

Instrument :  
 BNA\_G  
 ClientSampleId :  
 PALMYRA-RT-73-COMP-1

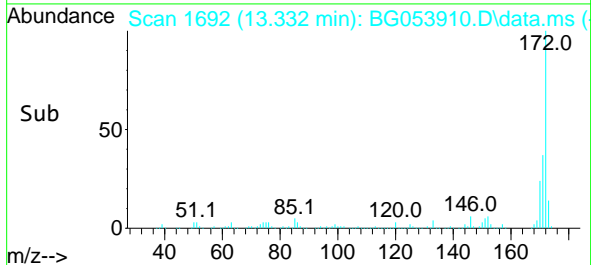
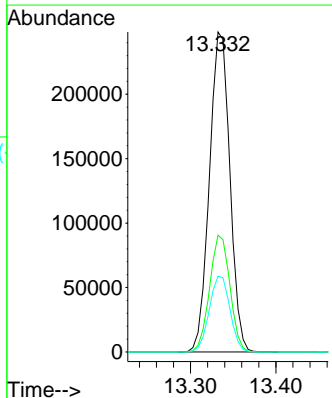
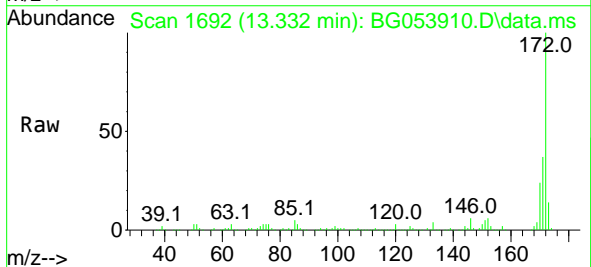


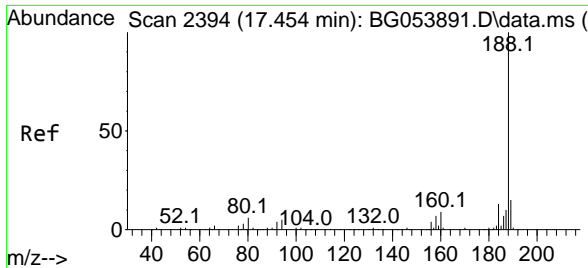
Tgt Ion:330 Resp: 161271  
 Ion Ratio Lower Upper  
 330 100  
 332 96.6 76.0 114.0  
 141 22.7 27.1 40.7#



#45  
 2-Fluorobiphenyl  
 Concen: 108.705 ng  
 RT: 13.332 min Scan# 1692  
 Delta R.T. -0.003 min  
 Lab File: BG053910.D  
 Acq: 14 Jun 2022 20:45

Tgt Ion:172 Resp: 412915  
 Ion Ratio Lower Upper  
 172 100  
 171 36.5 28.5 42.7  
 170 23.7 18.9 28.3

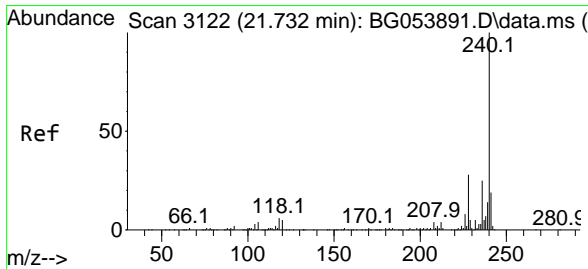
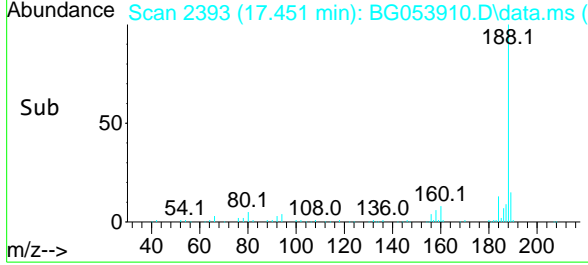
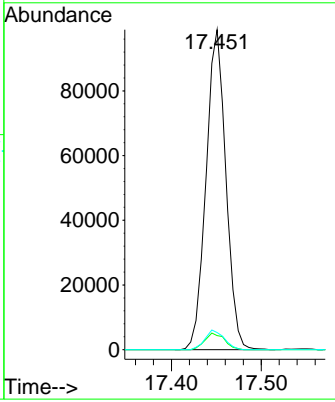
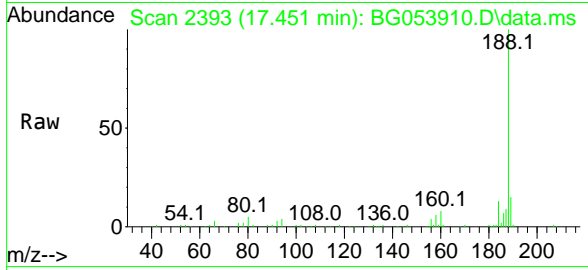




#64  
 Phenanthrene-d10  
 Concen: 20.000 ng  
 RT: 17.451 min Scan# 21  
 Delta R.T. -0.003 min  
 Lab File: BG053910.D  
 Acq: 14 Jun 2022 20:45

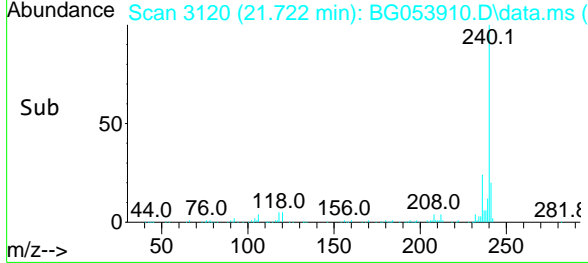
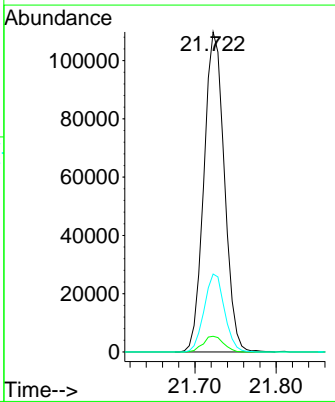
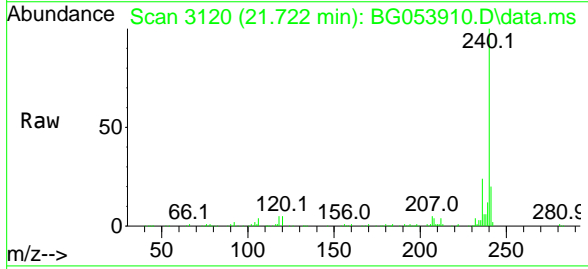
Instrument : BNA\_G  
 ClientSampleId : PALMYRA-RT-73-COMP-1

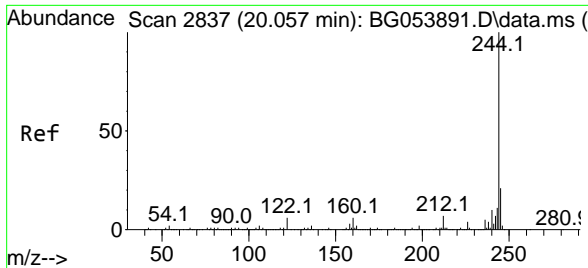
Tgt Ion	Resp	Lower	Upper
188	151500		
94	4.4	5.4	8.0#
80	5.4	6.8	10.2#



#76  
 Chrysene-d12  
 Concen: 20.000 ng  
 RT: 21.722 min Scan# 3120  
 Delta R.T. -0.009 min  
 Lab File: BG053910.D  
 Acq: 14 Jun 2022 20:45

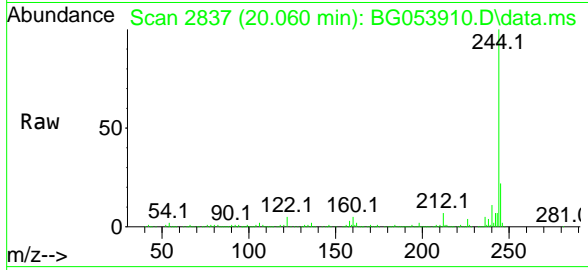
Tgt Ion	Resp	Lower	Upper
240	191598		
120	4.9	4.6	7.0
236	24.3	20.2	30.4



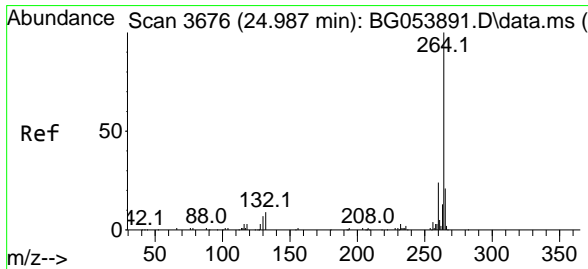
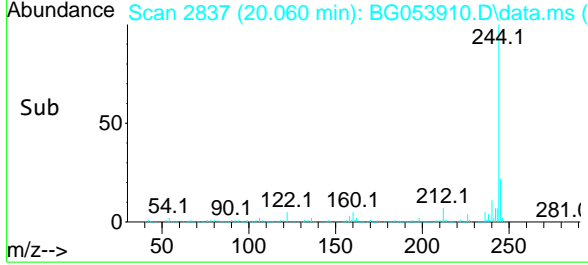
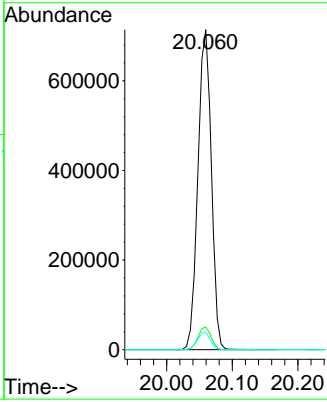


#79  
 Terphenyl-d14  
 Concen: 106.964 ng  
 RT: 20.060 min Scan# 21  
 Delta R.T. 0.003 min  
 Lab File: BG053910.D  
 Acq: 14 Jun 2022 20:45

**Instrument :**  
 BNA\_G  
**ClientSampleId :**  
 PALMYRA-RT-73-COMP-1



Tgt Ion:244 Resp: 1017544  
 Ion Ratio Lower Upper  
 244 100  
 212 7.0 6.5 9.7  
 122 5.4 5.0 7.4



#86  
 Perylene-d12  
 Concen: 20.000 ng  
 RT: 24.983 min Scan# 3675  
 Delta R.T. -0.003 min  
 Lab File: BG053910.D  
 Acq: 14 Jun 2022 20:45

Tgt Ion:264 Resp: 194942  
 Ion Ratio Lower Upper  
 264 100  
 260 24.2 19.0 28.6  
 265 21.5 17.4 26.2

