

Data Path : Z:\HPCHEM1\BNA_G\DATA\BG061617\
 Data File : BG027495.D
 Acq On : 17 Jun 2017 6:37
 Operator : SJ/MA
 Sample : I3600-02
 Misc :
 ALS Vial : 28 Sample Multiplier: 1

Instrument :
 BNA_G
 ClientSampleId :
 F5A12

Quant Time: Jun 19 00:57:28 2017
 Quant Method : Z:\HPCHEM1\BNA_G\METHODS\SOM-EPA-BG061617.M
 Quant Title : SVOA CALIBRATION
 QLast Update : Mon Jun 19 00:57:08 2017
 Response via : Initial Calibration

Internal Standards	R.T.	QIon	Response	Conc	Units	Dev(Min)
1) 1,4-Dichlorobenzene-d4	8.52	152	50545	20.00	ng/ul	0.00
18) Naphthalene-d8	11.34	136	249454	20.00	ng/ul	0.00
35) Acenaphthene-d10	15.11	164	163146	20.00	ng/ul	0.00
61) Phenanthrene-d10	17.86	188	399841	20.00	ng/ul	0.00
75) Chrysene-d12	22.23	240	415787	20.00	ng/ul	0.00
83) Perylene-d12	25.89	264	395590	20.00	ng/ul	0.00

System Monitoring Compounds

3) 1,4-Dioxane-d8	4.08	96	6687	5.29	ng/uL	0.00
5) Phenol-d5	7.66	99	25220	4.60	ng/ul	0.00
7) Bis-(2-Chloroethyl)ether-d	7.83	67	82734	22.15	ng/ul	0.00
9) 2-Chlorophenol-d4	8.06	132	65280	18.03	ng/ul	0.00
13) 4-Methylphenol-d8	9.20	113	45026	10.51	ng/ul	0.00
19) Nitrobenzene-d5	9.68	128	41646	22.98	ng/ul	0.00
22) 2-Nitrophenol-d4	10.41	143	45300	23.53	ng/ul	0.00
26) 2,4-Dichlorophenol-d3	10.95	165	77660	21.35	ng/ul	0.00
29) 4-Chloroaniline-d4	11.47	131	1181	0.26	ng/ul	0.01
43) Dimethylphthalate-d6	14.49	166	325276	23.81	ng/ul	0.00
46) Acenaphthylene-d8	14.80	160	356552	22.66	ng/ul	0.00
51) 4-Nitrophenol-d4	15.28	143	10139	3.79	ng/ul	0.00
57) Fluorene-d10	16.09	176	281439	21.96	ng/ul	0.00
62) 4,6-Dinitro-2-methylphenol	16.19	200	52052	20.96	ng/ul	0.00
70) Anthracene-d10	17.96	188	448293	24.05	ng/ul	0.00
76) Pyrene-d10	20.22	212	526317	25.92	ng/ul	0.00
87) Benzo(a)pyrene-d12	25.63	264	456048	25.60	ng/ul	0.00

Target Compounds

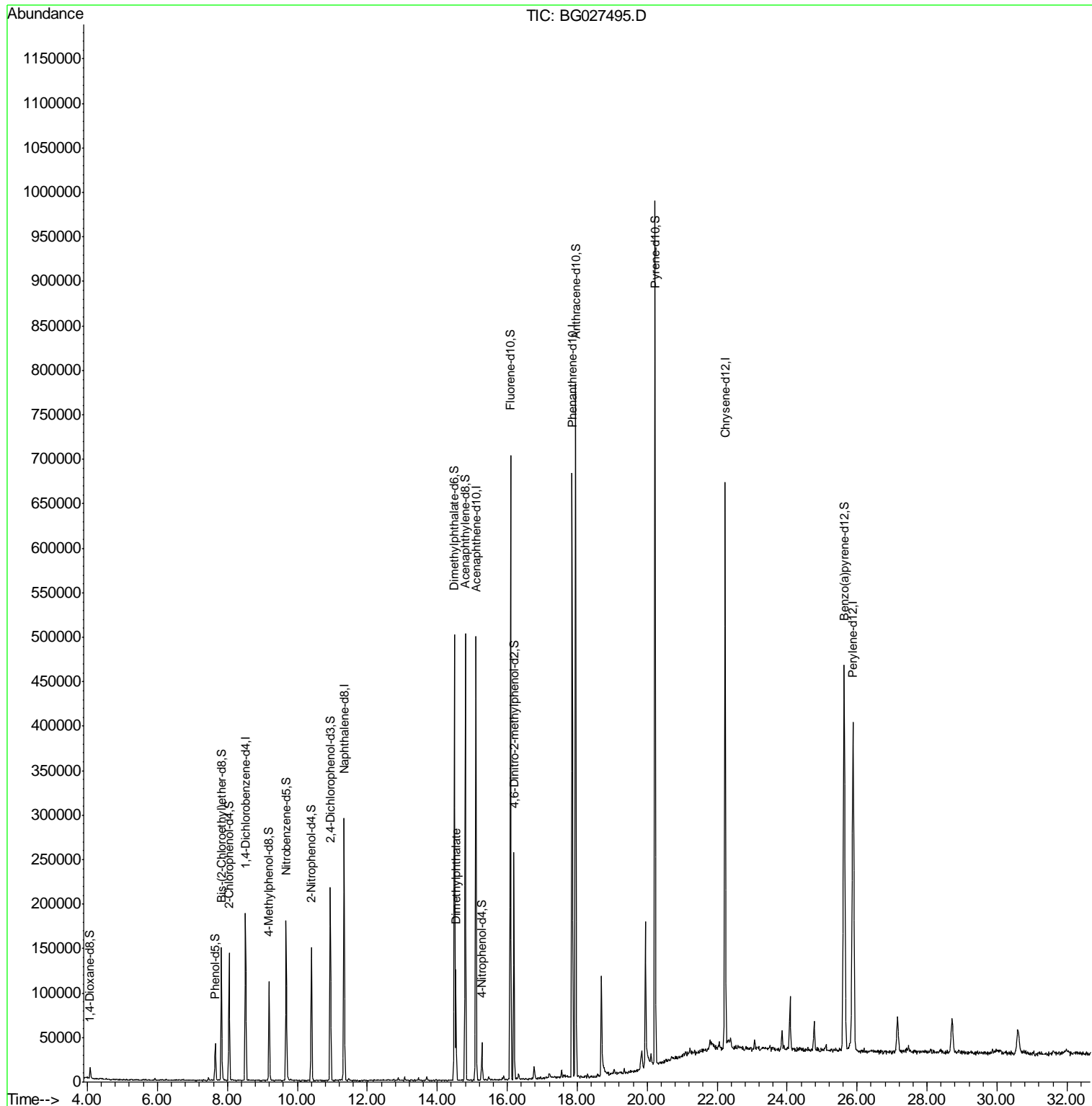
Target Compounds	R.T.	QIon	Response	Conc	Units	Qvalue
44) Dimethylphthalate	14.54	163	80615	5.950	ng/ul	97

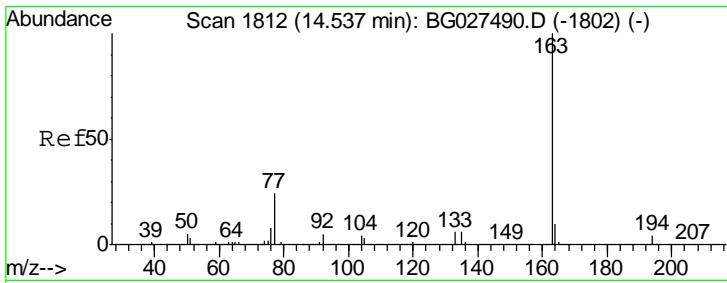
(#) = qualifier out of range (m) = manual integration (+) = signals summed

Data Path : Z:\HPCHEM1\BNA_G\DATA\BG061617\
 Data File : BG027495.D
 Acq On : 17 Jun 2017 6:37
 Operator : SJ/MA
 Sample : I3600-02
 Misc :
 ALS Vial : 28 Sample Multiplier: 1

Instrument :
 BNA_G
 ClientSampleId :
 F5A12

Quant Time: Jun 19 00:57:28 2017
 Quant Method : Z:\HPCHEM1\BNA_G\METHODS\SOM-EPA-BG061617.M
 Quant Title : SVOA CALIBRATION
 QLast Update : Mon Jun 19 00:57:08 2017
 Response via : Initial Calibration





#44
 Dimethylphthalate
 Concen: 5.950 ng/ul
 RT: 14.54 min Scan# 1812
 Delta R.T. -0.00 min
 Lab File: BG027495.D
 Acq: 17 Jun 2017 6:37

Instrument :
 BNA_G
 ClientSampleId :
 F5A12

Tgt Ion:163 Resp: 80615

Ion	Ratio	Lower	Upper
163	100		
194	4.5	3.4	5.0
164	10.0	9.0	13.4

