

Data Path : Z:\HPCHEM1\BNA_G\DATA\BG061617\
 Data File : BG027479.D
 Acq On : 16 Jun 2017 20:04
 Operator : SJ/MA
 Sample : I3600-04
 Misc :
 ALS Vial : 13 Sample Multiplier: 1

Instrument :
 BNA_G
 ClientSampleId :
 F5E11

Integration Parameters: LSCINT.P

Integrator: RTE
 Smoothing : ON
 Sampling : 1
 Start Thrs: 0.1
 Stop Thrs : 0

Filtering: 5
 Min Area: 0.1 % of largest Peak
 Max Peaks: 100
 Peak Location: TOP

If leading or trailing edge < 100 prefer < Baseline drop else tangent >
 Peak separation: 1

Method : Z:\HPCHEM1\BNA_G\METHODS\SOM-EPA-BG061617.M
 Title : SVOA CALIBRATION

Signal : TIC

| peak # | R.T. min | first scan | max scan | last scan | PK TY | peak height | corr. area | corr. % max. | % of total |
|--------|----------|------------|----------|-----------|-------|-------------|------------|--------------|------------|
| 1 | 3.917 | 3 | 5 | 14 | rVB6 | 1623 | 3179 | 0.19% | 0.021% |
| 2 | 4.075 | 27 | 32 | 44 | rVB2 | 9857 | 16971 | 1.03% | 0.113% |
| 3 | 4.269 | 63 | 65 | 69 | rVB4 | 2298 | 2271 | 0.14% | 0.015% |
| 4 | 4.410 | 86 | 89 | 92 | rBV4 | 1693 | 2047 | 0.12% | 0.014% |
| 5 | 4.628 | 121 | 126 | 130 | rVV4 | 1357 | 1760 | 0.11% | 0.012% |
| 6 | 4.751 | 140 | 147 | 150 | rBV4 | 1133 | 1813 | 0.11% | 0.012% |
| 7 | 4.786 | 150 | 153 | 160 | rVV5 | 2069 | 3079 | 0.19% | 0.021% |
| 8 | 5.297 | 236 | 240 | 243 | rVB3 | 1742 | 1915 | 0.12% | 0.013% |
| 9 | 6.085 | 366 | 374 | 379 | rBV4 | 1640 | 3641 | 0.22% | 0.024% |
| 10 | 6.185 | 384 | 391 | 393 | rBV5 | 1046 | 2140 | 0.13% | 0.014% |
| 11 | 6.238 | 398 | 400 | 406 | rVB3 | 1722 | 2533 | 0.15% | 0.017% |
| 12 | 6.373 | 420 | 423 | 430 | rVB5 | 987 | 1990 | 0.12% | 0.013% |
| 13 | 6.737 | 480 | 485 | 493 | rBV4 | 2180 | 4433 | 0.27% | 0.030% |
| 14 | 7.659 | 635 | 642 | 651 | rVB | 33532 | 63025 | 3.81% | 0.421% |
| 15 | 7.830 | 663 | 671 | 685 | rVB | 115513 | 211885 | 12.81% | 1.416% |
| 16 | 8.053 | 699 | 709 | 717 | rBV | 116778 | 214944 | 13.00% | 1.436% |
| 17 | 8.353 | 758 | 760 | 768 | rVB4 | 1388 | 2503 | 0.15% | 0.017% |
| 18 | 8.435 | 768 | 774 | 777 | rBV2 | 841 | 1691 | 0.10% | 0.011% |
| 19 | 8.523 | 779 | 789 | 799 | rBV | 158384 | 296329 | 17.92% | 1.980% |
| 20 | 8.893 | 850 | 852 | 858 | rVB3 | 992 | 1920 | 0.12% | 0.013% |
| 21 | 8.958 | 858 | 863 | 865 | rBV2 | 1012 | 1769 | 0.11% | 0.012% |
| 22 | 9.199 | 897 | 904 | 913 | rVB | 102170 | 190829 | 11.54% | 1.275% |
| 23 | 9.287 | 913 | 919 | 922 | rVV3 | 933 | 1855 | 0.11% | 0.012% |
| 24 | 9.334 | 922 | 927 | 932 | rVV4 | 2096 | 4210 | 0.25% | 0.028% |
| 25 | 9.604 | 965 | 973 | 979 | rBV3 | 6912 | 13542 | 0.82% | 0.090% |
| 26 | 9.681 | 979 | 986 | 994 | rBV | 147821 | 287023 | 17.36% | 1.918% |
| 27 | 9.816 | 1005 | 1009 | 1014 | rVV5 | 1197 | 2001 | 0.12% | 0.013% |
| 28 | 10.233 | 1077 | 1080 | 1085 | rVB3 | 948 | 1796 | 0.11% | 0.012% |
| 29 | 10.409 | 1098 | 1110 | 1118 | rBV | 125896 | 244903 | 14.81% | 1.636% |
| 30 | 10.744 | 1164 | 1167 | 1173 | rBV3 | 858 | 1818 | 0.11% | 0.012% |
| 31 | 10.944 | 1193 | 1201 | 1212 | rBV | 184407 | 353965 | 21.41% | 2.365% |
| 32 | 11.226 | 1242 | 1249 | 1258 | rBV4 | 7213 | 13142 | 0.79% | 0.088% |
| 33 | 11.337 | 1260 | 1268 | 1284 | rVB | 255060 | 499011 | 30.18% | 3.334% |
| 34 | 11.473 | 1284 | 1291 | 1304 | rBV6 | 5963 | 12120 | 0.73% | 0.081% |

Data Path : Z:\HPCHEM1\BNA_G\DATA\BG061617\
 Data File : BG027479.D
 Acq On : 16 Jun 2017 20:04
 Operator : SJ/MA
 Sample : I3600-04
 Misc :
 ALS Vial : 13 Sample Multiplier: 1

Instrument :
 BNA_G
 ClientSampleId :
 F5E11

Integration Parameters: LSCINT.P

Integrator: RTE
 Smoothing : ON
 Sampling : 1
 Start Thrs: 0.1
 Stop Thrs : 0

Filtering: 5
 Min Area: 0.1 % of largest Peak
 Max Peaks: 100
 Peak Location: TOP

If leading or trailing edge < 100 prefer < Baseline drop else tangent >
 Peak separation: 1

Method : Z:\HPCHEM1\BNA_G\METHODS\SOM-EPA-BG061617.M
 Title : SVOA CALIBRATION

| | | | | | | | | | |
|----|--------|------|------|------|------|--------|---------|--------|--------|
| 35 | 11.643 | 1317 | 1320 | 1325 | rBV2 | 1065 | 1756 | 0.11% | 0.012% |
| 36 | 11.984 | 1375 | 1378 | 1384 | rBV4 | 2656 | 3926 | 0.24% | 0.026% |
| 37 | 12.283 | 1424 | 1429 | 1433 | rVB3 | 1124 | 1881 | 0.11% | 0.013% |
| 38 | 12.466 | 1455 | 1460 | 1464 | rVB4 | 1462 | 2257 | 0.14% | 0.015% |
| 39 | 12.571 | 1472 | 1478 | 1486 | rBV3 | 12545 | 21427 | 1.30% | 0.143% |
| 40 | 12.659 | 1491 | 1493 | 1497 | rVB2 | 1342 | 1736 | 0.10% | 0.012% |
| 41 | 12.877 | 1524 | 1530 | 1537 | rVB5 | 3179 | 5923 | 0.36% | 0.040% |
| 42 | 12.953 | 1539 | 1543 | 1553 | rBV4 | 2377 | 4209 | 0.25% | 0.028% |
| 43 | 13.182 | 1575 | 1582 | 1584 | rBV2 | 2641 | 3599 | 0.22% | 0.024% |
| 44 | 13.459 | 1624 | 1629 | 1634 | rVB6 | 2127 | 3444 | 0.21% | 0.023% |
| 45 | 13.547 | 1641 | 1644 | 1649 | rVB3 | 2307 | 3270 | 0.20% | 0.022% |
| 46 | 13.582 | 1649 | 1650 | 1655 | rBV3 | 1475 | 2233 | 0.14% | 0.015% |
| 47 | 13.699 | 1666 | 1670 | 1677 | rVB4 | 3795 | 7120 | 0.43% | 0.048% |
| 48 | 14.075 | 1733 | 1734 | 1743 | rVB3 | 1441 | 3147 | 0.19% | 0.021% |
| 49 | 14.158 | 1743 | 1748 | 1750 | rBV3 | 1600 | 2183 | 0.13% | 0.015% |
| 50 | 14.293 | 1764 | 1771 | 1774 | rBV2 | 1114 | 2252 | 0.14% | 0.015% |
| 51 | 14.493 | 1798 | 1805 | 1819 | rVB | 492876 | 752233 | 45.49% | 5.026% |
| 52 | 14.804 | 1850 | 1858 | 1867 | rVB | 459415 | 775951 | 46.93% | 5.184% |
| 53 | 14.904 | 1871 | 1875 | 1879 | rBV3 | 1578 | 3088 | 0.19% | 0.021% |
| 54 | 14.963 | 1879 | 1885 | 1888 | rVV6 | 1806 | 3713 | 0.22% | 0.025% |
| 55 | 15.110 | 1897 | 1910 | 1916 | rBV2 | 425900 | 768452 | 46.48% | 5.134% |
| 56 | 15.162 | 1916 | 1919 | 1925 | rVB2 | 19585 | 28787 | 1.74% | 0.192% |
| 57 | 15.286 | 1933 | 1940 | 1952 | rVV | 43641 | 91780 | 5.55% | 0.613% |
| 58 | 15.392 | 1957 | 1958 | 1962 | rVB3 | 1968 | 1994 | 0.12% | 0.013% |
| 59 | 15.439 | 1962 | 1966 | 1967 | rVB4 | 2379 | 2600 | 0.16% | 0.017% |
| 60 | 15.456 | 1967 | 1969 | 1971 | rBV3 | 3063 | 3397 | 0.21% | 0.023% |
| 61 | 15.509 | 1971 | 1978 | 1984 | rVB5 | 4723 | 12710 | 0.77% | 0.085% |
| 62 | 15.580 | 1987 | 1990 | 1993 | rBV5 | 1565 | 2056 | 0.12% | 0.014% |
| 63 | 15.668 | 2003 | 2005 | 2010 | rBV6 | 1395 | 2133 | 0.13% | 0.014% |
| 64 | 15.762 | 2015 | 2021 | 2025 | rVV2 | 10980 | 18626 | 1.13% | 0.124% |
| 65 | 15.820 | 2025 | 2031 | 2037 | rVV | 14908 | 24678 | 1.49% | 0.165% |
| 66 | 15.891 | 2037 | 2043 | 2048 | rVB9 | 5875 | 11405 | 0.69% | 0.076% |
| 67 | 15.956 | 2052 | 2054 | 2061 | rVB5 | 1545 | 2532 | 0.15% | 0.017% |
| 68 | 16.097 | 2063 | 2078 | 2085 | rBV | 669193 | 1083073 | 65.50% | 7.236% |
| 69 | 16.149 | 2085 | 2087 | 2089 | rVV2 | 6801 | 6459 | 0.39% | 0.043% |
| 70 | 16.196 | 2089 | 2095 | 2104 | rVB | 283432 | 446080 | 26.98% | 2.980% |
| 71 | 16.332 | 2112 | 2118 | 2126 | rVB6 | 7309 | 13295 | 0.80% | 0.089% |

Data Path : Z:\HPCHEM1\BNA_G\DATA\BG061617\
 Data File : BG027479.D
 Acq On : 16 Jun 2017 20:04
 Operator : SJ/MA
 Sample : I3600-04
 Misc :
 ALS Vial : 13 Sample Multiplier: 1

Instrument :
 BNA_G
 ClientSampleId :
 F5E11

Integration Parameters: LSCINT.P

Integrator: RTE
 Smoothing : ON Filtering: 5
 Sampling : 1 Min Area: 0.1 % of largest Peak
 Start Thrs: 0.1 Max Peaks: 100
 Stop Thrs : 0 Peak Location: TOP

If leading or trailing edge < 100 prefer < Baseline drop else tangent >
 Peak separation: 1

Method : Z:\HPCHEM1\BNA_G\METHODS\SOM-EPA-BG061617.M
 Title : SVOA CALIBRATION

| | | | | | | | | | |
|-----|--------|------|------|------|-------|---------|---------|---------|---------|
| 72 | 16.449 | 2129 | 2138 | 2147 | rVB5 | 10832 | 25201 | 1.52% | 0.168% |
| 73 | 16.537 | 2149 | 2153 | 2158 | rBV6 | 1082 | 1850 | 0.11% | 0.012% |
| 74 | 16.584 | 2158 | 2161 | 2166 | rVV6 | 1625 | 2674 | 0.16% | 0.018% |
| 75 | 16.778 | 2186 | 2194 | 2202 | rBV2 | 12745 | 27880 | 1.69% | 0.186% |
| 76 | 16.925 | 2214 | 2219 | 2220 | rVB4 | 1589 | 2073 | 0.13% | 0.014% |
| 77 | 16.966 | 2221 | 2226 | 2229 | rVB6 | 1887 | 2895 | 0.18% | 0.019% |
| 78 | 17.013 | 2230 | 2234 | 2236 | rBV5 | 1871 | 2120 | 0.13% | 0.014% |
| 79 | 17.048 | 2236 | 2240 | 2244 | rBV7 | 3552 | 5422 | 0.33% | 0.036% |
| 80 | 17.137 | 2254 | 2255 | 2259 | rBV4 | 2968 | 2390 | 0.14% | 0.016% |
| 81 | 17.213 | 2261 | 2268 | 2269 | rBV5 | 2720 | 5544 | 0.34% | 0.037% |
| 82 | 17.330 | 2285 | 2288 | 2295 | rBV10 | 2765 | 6696 | 0.40% | 0.045% |
| 83 | 17.424 | 2297 | 2304 | 2309 | rBV10 | 5570 | 12999 | 0.79% | 0.087% |
| 84 | 17.548 | 2319 | 2325 | 2326 | rBV6 | 3609 | 5851 | 0.35% | 0.039% |
| 85 | 17.636 | 2336 | 2340 | 2345 | rBV8 | 3626 | 7785 | 0.47% | 0.052% |
| 86 | 17.742 | 2357 | 2358 | 2361 | rBV3 | 2842 | 2536 | 0.15% | 0.017% |
| 87 | 17.777 | 2362 | 2364 | 2370 | rVB7 | 4964 | 8418 | 0.51% | 0.056% |
| 88 | 17.859 | 2370 | 2378 | 2388 | rBV2 | 626418 | 1050925 | 63.56% | 7.022% |
| 89 | 17.959 | 2388 | 2395 | 2411 | rVB2 | 841050 | 1359734 | 82.24% | 9.085% |
| 90 | 18.212 | 2437 | 2438 | 2440 | rBV2 | 3780 | 3282 | 0.20% | 0.022% |
| 91 | 18.259 | 2442 | 2446 | 2448 | rVB5 | 4983 | 6261 | 0.38% | 0.042% |
| 92 | 18.288 | 2449 | 2451 | 2454 | rBV4 | 3834 | 2365 | 0.14% | 0.016% |
| 93 | 18.318 | 2454 | 2456 | 2459 | rBV4 | 4321 | 4221 | 0.26% | 0.028% |
| 94 | 18.494 | 2480 | 2486 | 2492 | rBV | 97637 | 142350 | 8.61% | 0.951% |
| 95 | 18.699 | 2517 | 2521 | 2529 | rBV10 | 14397 | 32872 | 1.99% | 0.220% |
| 96 | 19.957 | 2732 | 2735 | 2738 | rBV5 | 18138 | 29208 | 1.77% | 0.195% |
| 97 | 20.227 | 2774 | 2781 | 2792 | rBV2 | 1045625 | 1653458 | 100.00% | 11.047% |
| 98 | 22.231 | 3115 | 3122 | 3132 | rVB | 578021 | 1088237 | 65.82% | 7.271% |
| 99 | 25.638 | 3692 | 3702 | 3719 | rVB2 | 493268 | 1586745 | 95.97% | 10.602% |
| 100 | 25.891 | 3734 | 3745 | 3761 | rVB3 | 350842 | 1291368 | 78.10% | 8.628% |

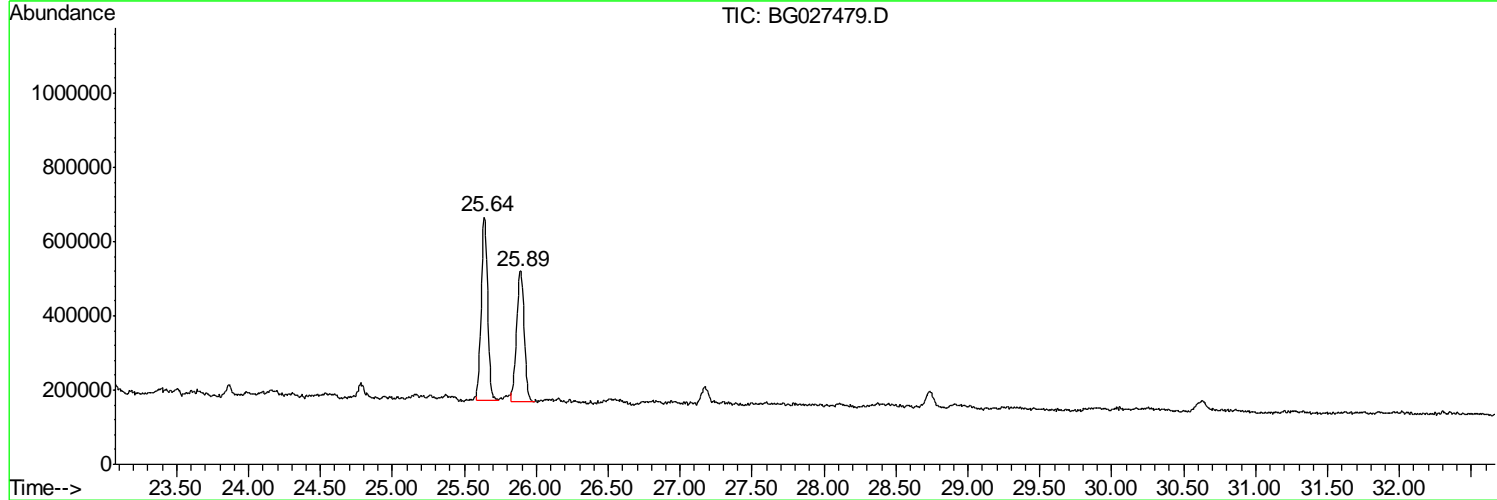
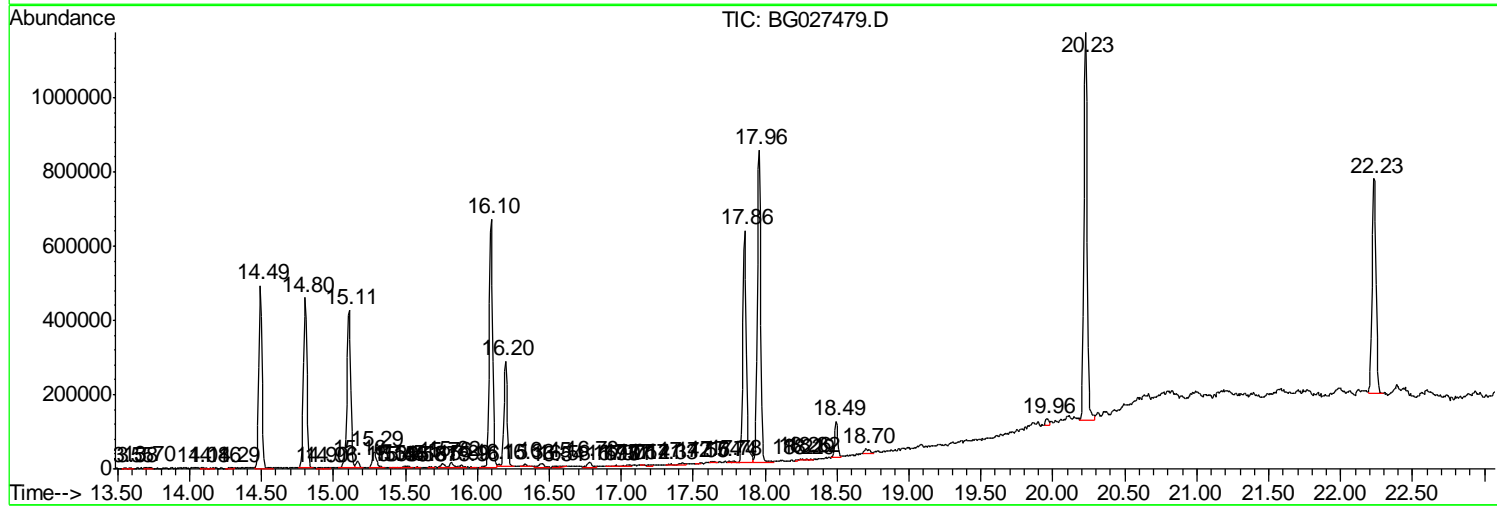
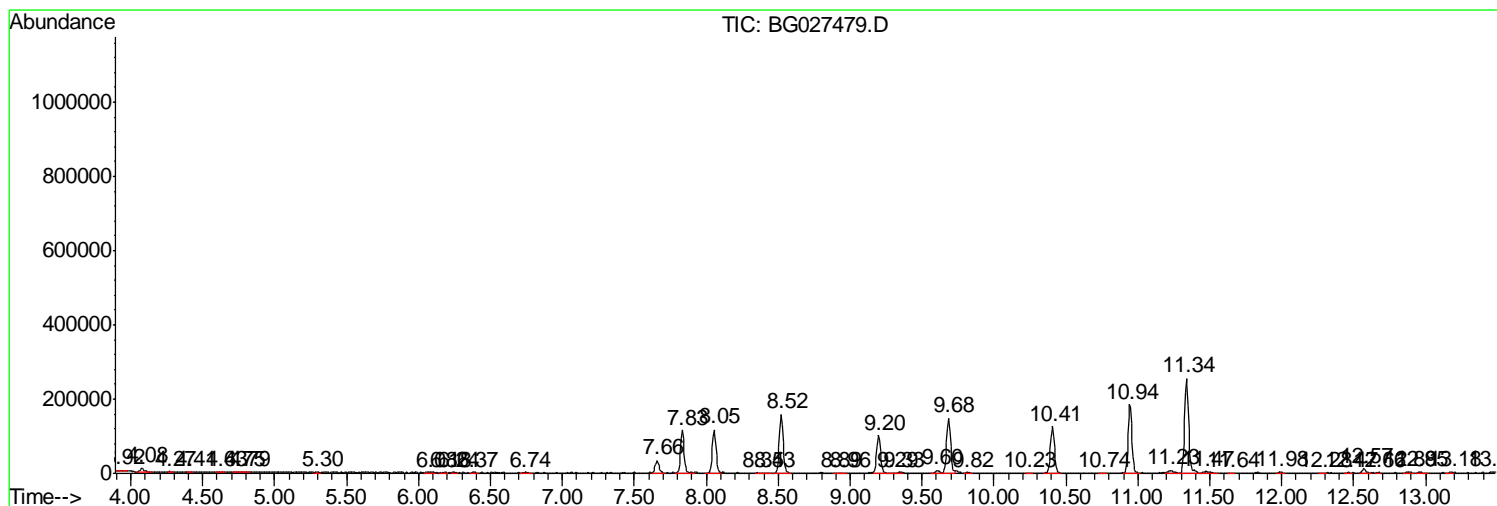
Sum of corrected areas: 14966818

Data Path : Z:\HPCHEM1\BNA_G\DATA\BG061617\
 Data File : BG027479.D
 Acq On : 16 Jun 2017 20:04
 Operator : SJ/MA
 Sample : I3600-04
 Misc :
 ALS Vial : 13 Sample Multiplier: 1

Instrument :
 BNA_G
 ClientSampled :
 F5E11

Quant Method : Z:\HPCHEM1\BNA_G\METHODS\SOM-EPA-BG061617.M
 Quant Title : SVOA CALIBRATION

TIC Library : C:\DATABASE\NIST11.L
 TIC Integration Parameters: LSCINT.P



Data Path : Z:\HPCHEM1\BNA_G\DATA\BG061617\
 Data File : BG027479.D
 Acq On : 16 Jun 2017 20:04
 Operator : SJ/MA
 Sample : I3600-04
 Misc :
 ALS Vial : 13 Sample Multiplier: 1

Instrument :
 BNA_G
 ClientSampled :
 F5E11

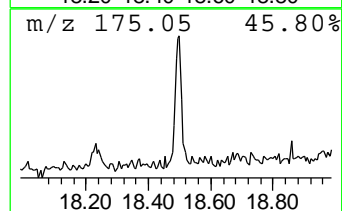
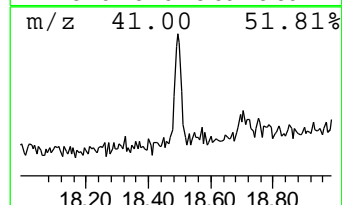
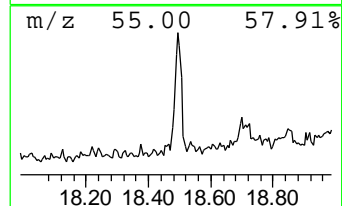
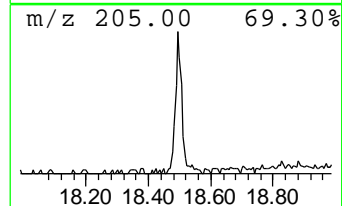
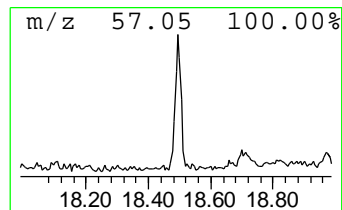
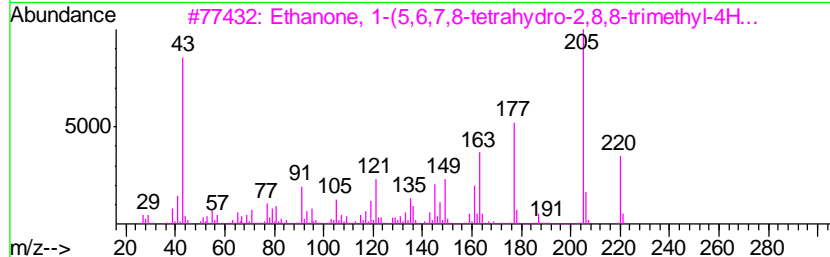
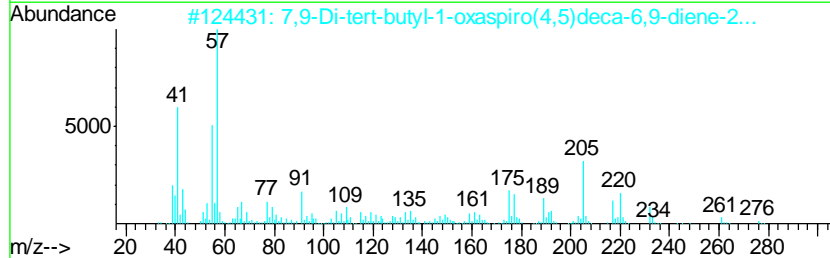
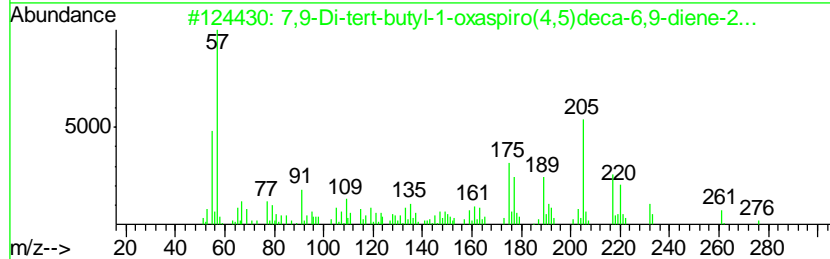
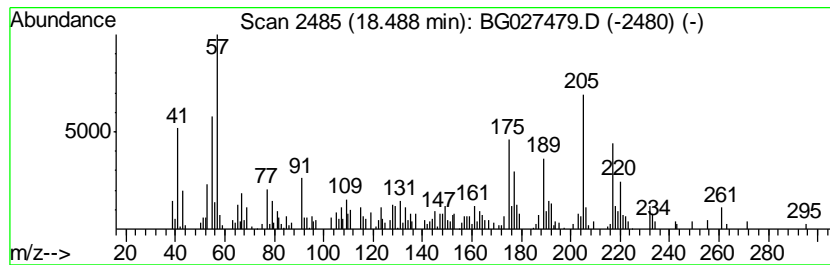
Quant Method : Z:\HPCHEM1\BNA_G\METHODS\SOM-EPA-BG061617.M
 Quant Title : SVOA CALIBRATION

TIC Library : C:\DATABASE\NIST11.L
 TIC Integration Parameters: LSCINT.P

 Peak Number 1 7,9-Di-tert-butyl-1-oxaspiro... Concentration Rank 1

| R.T. | EstConc | Area | Relative to ISTD | R.T. |
|-------|------------|--------|------------------|-------|
| 18.49 | 2.71 ng/ul | 142350 | Phenanthrene-d10 | 17.86 |

| Hit# | of | Tentative ID | MW | MolForm | CAS# | Qual |
|------|----|-------------------------------------|-----|----------|-------------|------|
| 1 | 5 | 7,9-Di-tert-butyl-1-oxaspiro(4,5... | 276 | C17H24O3 | 082304-66-3 | 99 |
| 2 | | 7,9-Di-tert-butyl-1-oxaspiro(4,5... | 276 | C17H24O3 | 082304-66-3 | 86 |
| 3 | | Ethanone, 1-(5,6,7,8-tetrahydro-... | 220 | C14H20O2 | 071596-88-8 | 64 |
| 4 | | Butylated Hydroxytoluene | 220 | C15H24O | 000128-37-0 | 46 |
| 5 | | 2H-1-Benzopyran, 6,7-dimethoxy-2... | 220 | C13H16O3 | 000644-06-4 | 41 |



Data Path : Z:\HPCHEM1\BNA_G\DATA\BG061617\
Data File : BG027479.D
Acq On : 16 Jun 2017 20:04
Operator : SJ/MA
Sample : I3600-04
Misc :
ALS Vial : 13 Sample Multiplier: 1

Instrument :
BNA_G
ClientSampleId :
F5E11

Quant Method : Z:\HPCHEM1\BNA_G\METHODS\SOM-EPA-BG061617.M
Quant Title : SVOA CALIBRATION

TIC Library : C:\DATABASE\NIST11.L
TIC Integration Parameters: LSCINT.P

| TIC Top Hit name | RT | EstConc | Units | Response | --Internal Standard-- | | | |
|----------------------|-------|---------|-------|----------|-----------------------|-------|---------|------|
| | | | | | # | RT | Resp | Conc |
| 7,9-Di-tert-butyl... | 18.49 | 2.7 | ng/ul | 142350 | 4 | 17.86 | 1050930 | 20.0 |