

Data Path : Z:\HPCHEM1\BNA_G\DATA\BG061617\
 Data File : BG027510.D
 Acq On : 17 Jun 2017 17:11
 Operator : SJ/MA
 Sample : I3599-05
 Misc :
 ALS Vial : 42 Sample Multiplier: 1

Instrument :
 BNA_G
 ClientSampleId :
 F5A81

Integration Parameters: LSCINT.P

Integrator: RTE
 Smoothing : ON
 Sampling : 1
 Start Thrs: 0.1
 Stop Thrs : 0

Filtering: 5
 Min Area: 0.1 % of largest Peak
 Max Peaks: 100
 Peak Location: TOP

If leading or trailing edge < 100 prefer < Baseline drop else tangent >
 Peak separation: 1

Method : Z:\HPCHEM1\BNA_G\METHODS\SOM-EPA-BG061617.M
 Title : SVOA CALIBRATION

Signal : TIC

peak #	R.T. min	first scan	max scan	last scan	PK TY	peak height	corr. area	corr. % max.	% of total
1	4.082	28	33	39	rVB4	5276	8016	0.69%	0.067%
2	4.229	56	58	65	rVB5	1581	2961	0.26%	0.025%
3	4.288	65	68	72	rBV5	1295	2000	0.17%	0.017%
4	4.400	83	87	90	rBV4	1033	1515	0.13%	0.013%
5	4.787	150	153	157	rBV3	1448	2197	0.19%	0.018%
6	5.675	299	304	307	rBV4	1419	2366	0.20%	0.020%
7	6.609	461	463	470	rVB5	1140	2003	0.17%	0.017%
8	6.732	479	484	489	rBV2	961	1882	0.16%	0.016%
9	7.655	633	641	653	rBV	90804	175931	15.23%	1.465%
10	7.831	662	671	682	rBV	75118	130709	11.32%	1.089%
11	8.054	702	709	718	rBV	83620	153410	13.28%	1.278%
12	8.518	781	788	797	rVB	140235	251044	21.73%	2.091%
13	9.194	895	903	919	rVB	108261	197539	17.10%	1.645%
14	9.682	977	986	1000	rVB	87040	164255	14.22%	1.368%
15	9.981	1034	1037	1043	rBV	710	1471	0.13%	0.012%
16	10.040	1043	1047	1054	rVB2	1441	2662	0.23%	0.022%
17	10.404	1099	1109	1119	rBV3	68573	131278	11.37%	1.093%
18	10.939	1189	1200	1213	rBV	110564	207100	17.93%	1.725%
19	11.268	1252	1256	1260	rVB4	1026	1629	0.14%	0.014%
20	11.339	1260	1268	1280	rVB	227980	432807	37.47%	3.604%
21	11.462	1280	1289	1300	rBV	102453	201938	17.48%	1.682%
22	11.556	1304	1305	1314	rVB4	926	1688	0.15%	0.014%
23	11.685	1323	1327	1332	rVB2	2044	2727	0.24%	0.023%
24	11.779	1336	1343	1346	rBV3	1246	2479	0.21%	0.021%
25	12.766	1506	1511	1516	rVB3	1827	3346	0.29%	0.028%
26	12.878	1526	1530	1540	rBB2	1759	2939	0.25%	0.024%
27	13.466	1625	1630	1634	rVB4	2611	4424	0.38%	0.037%
28	13.695	1664	1669	1674	rBV3	3170	5429	0.47%	0.045%
29	13.894	1700	1703	1706	rVB2	1389	1735	0.15%	0.014%
30	13.965	1712	1715	1723	rVB4	2060	4523	0.39%	0.038%
31	14.071	1728	1733	1738	rBV3	10225	13452	1.16%	0.112%
32	14.488	1796	1804	1809	rBV	243516	369211	31.96%	3.075%
33	14.535	1809	1812	1824	rVB	78383	108672	9.41%	0.905%
34	14.799	1849	1857	1876	rBV	252591	420685	36.42%	3.504%

Data Path : Z:\HPCHEM1\BNA_G\DATA\BG061617\
 Data File : BG027510.D
 Acq On : 17 Jun 2017 17:11
 Operator : SJ/MA
 Sample : I3599-05
 Misc :
 ALS Vial : 42 Sample Multiplier: 1

Instrument :
 BNA_G
 ClientSampleId :
 F5A81

Integration Parameters: LSCINT.P

Integrator: RTE
 Smoothing : ON
 Sampling : 1
 Start Thrs: 0.1
 Stop Thrs : 0

Filtering: 5
 Min Area: 0.1 % of largest Peak
 Max Peaks: 100
 Peak Location: TOP

If leading or trailing edge < 100 prefer < Baseline drop else tangent >
 Peak separation: 1

Method : Z:\HPCHEM1\BNA_G\METHODS\SOM-EPA-BG061617.M
 Title : SVOA CALIBRATION

35	14.952	1877	1883	1889	rVB2	5379	7557	0.65%	0.063%
36	15.105	1899	1909	1919	rVB2	384815	657183	56.90%	5.473%
37	15.269	1927	1937	1951	rBV2	71590	136273	11.80%	1.135%
38	15.475	1965	1972	1973	rBV5	2368	4522	0.39%	0.038%
39	15.498	1975	1976	1980	rVB2	2468	2556	0.22%	0.021%
40	15.563	1984	1987	1995	rVB3	2140	4296	0.37%	0.036%
41	15.639	1997	2000	2006	rVB3	1164	2391	0.21%	0.020%
42	15.863	2034	2038	2040	rBV3	2407	2937	0.25%	0.024%
43	15.904	2040	2045	2051	rVB	10259	14752	1.28%	0.123%
44	15.963	2051	2055	2060	rVB5	1299	2037	0.18%	0.017%
45	16.092	2069	2077	2087	rVB	361874	574859	49.77%	4.787%
46	16.192	2087	2094	2103	rBV	92226	149661	12.96%	1.246%
47	16.315	2105	2115	2123	rBV7	3465	12406	1.07%	0.103%
48	16.403	2126	2130	2132	rBV4	1279	1753	0.15%	0.015%
49	16.444	2132	2137	2144	rVB7	11149	18402	1.59%	0.153%
50	16.532	2147	2152	2156	rBV4	2071	3563	0.31%	0.030%
51	16.762	2187	2191	2200	rBV3	14699	27540	2.38%	0.229%
52	16.826	2200	2202	2208	rVB5	2149	4026	0.35%	0.034%
53	16.950	2221	2223	2228	rBV4	1758	1581	0.14%	0.013%
54	17.038	2235	2238	2242	rBV5	1825	3246	0.28%	0.027%
55	17.108	2246	2250	2253	rVV5	2262	2684	0.23%	0.022%
56	17.220	2264	2269	2275	rBV6	2921	5927	0.51%	0.049%
57	17.561	2322	2327	2332	rVB4	9111	12289	1.06%	0.102%
58	17.637	2338	2340	2343	rVB3	1969	2440	0.21%	0.020%
59	17.719	2347	2354	2368	rVB9	6441	21795	1.89%	0.182%
60	17.854	2369	2377	2388	rVV2	525904	867778	75.13%	7.227%
61	17.954	2388	2394	2406	rVB2	395397	632259	54.74%	5.266%
62	18.107	2415	2420	2427	rVB4	1608	3675	0.32%	0.031%
63	18.254	2443	2445	2449	rBV2	2516	3412	0.30%	0.028%
64	18.295	2449	2452	2456	rVB4	3509	3996	0.35%	0.033%
65	18.483	2479	2484	2489	rVB7	2363	4588	0.40%	0.038%
66	18.595	2494	2503	2505	rBV7	4442	9442	0.82%	0.079%
67	18.642	2505	2511	2515	rBV4	8835	14701	1.27%	0.122%
68	18.695	2515	2520	2529	rBV3	67951	116054	10.05%	0.967%
69	18.771	2531	2533	2538	rVB3	7682	8501	0.74%	0.071%
70	18.918	2554	2558	2566	rVB10	3700	6978	0.60%	0.058%
71	18.983	2567	2569	2581	rVB8	3220	7607	0.66%	0.063%

Data Path : Z:\HPCHEM1\BNA_G\DATA\BG061617\
 Data File : BG027510.D
 Acq On : 17 Jun 2017 17:11
 Operator : SJ/MA
 Sample : I3599-05
 Misc :
 ALS Vial : 42 Sample Multiplier: 1

Instrument :
 BNA_G
 ClientSampleId :
 F5A81

Integration Parameters: LSCINT.P

Integrator: RTE
 Smoothing : ON Filtering: 5
 Sampling : 1 Min Area: 0.1 % of largest Peak
 Start Thrs: 0.1 Max Peaks: 100
 Stop Thrs : 0 Peak Location: TOP

If leading or trailing edge < 100 prefer < Baseline drop else tangent >
 Peak separation: 1

Method : Z:\HPCHEM1\BNA_G\METHODS\SOM-EPA-BG061617.M
 Title : SVOA CALIBRATION

72	19.065	2581	2583	2588	rBV5	1716	2763	0.24%	0.023%
73	19.206	2604	2607	2611	rVB4	2661	2745	0.24%	0.023%
74	19.253	2611	2615	2620	rBV6	3428	5381	0.47%	0.045%
75	19.447	2645	2648	2652	rVB4	2159	2740	0.24%	0.023%
76	19.547	2662	2665	2669	rBV5	1840	2662	0.23%	0.022%
77	19.623	2673	2678	2683	rVB7	3449	6178	0.53%	0.051%
78	19.764	2697	2702	2707	rBV5	10319	14638	1.27%	0.122%
79	19.887	2707	2723	2729	rBV	83941	166518	14.42%	1.387%
80	19.952	2730	2734	2746	rBV3	51105	92120	7.98%	0.767%
81	20.111	2756	2761	2770	rVB8	5746	12798	1.11%	0.107%
82	20.222	2773	2780	2792	rVB2	470428	870342	75.35%	7.248%
83	20.310	2792	2795	2800	rBV6	5495	9318	0.81%	0.078%
84	20.569	2832	2839	2847	rBV8	16419	35950	3.11%	0.299%
85	20.704	2856	2862	2874	rBV9	12487	42056	3.64%	0.350%
86	20.898	2889	2895	2900	rBV5	10331	19636	1.70%	0.164%
87	21.051	2917	2921	2925	rBV3	12133	18487	1.60%	0.154%
88	21.550	3002	3006	3017	rVB3	16493	36338	3.15%	0.303%
89	21.873	3056	3061	3066	rVB3	13861	25573	2.21%	0.213%
90	22.232	3111	3122	3128	rBV	518700	1155070	100.00%	9.620%
91	23.507	3335	3339	3345	rVB8	10169	17839	1.54%	0.149%
92	23.853	3392	3398	3406	rVB2	28733	64584	5.59%	0.538%
93	24.711	3534	3544	3549	rBV	70267	224568	19.44%	1.870%
94	24.770	3550	3554	3567	rVB5	79100	208257	18.03%	1.734%
95	25.540	3677	3685	3690	rBV2	31266	87633	7.59%	0.730%
96	25.628	3691	3700	3709	rVV2	192952	584647	50.62%	4.869%
97	25.880	3731	3743	3755	rVB4	304334	1131218	97.94%	9.421%
98	27.149	3950	3959	3975	rVB3	77265	250469	21.68%	2.086%
99	28.706	4214	4224	4240	rVB3	66633	266444	23.07%	2.219%
100	30.598	4533	4546	4566	rVB4	57026	278888	24.14%	2.323%

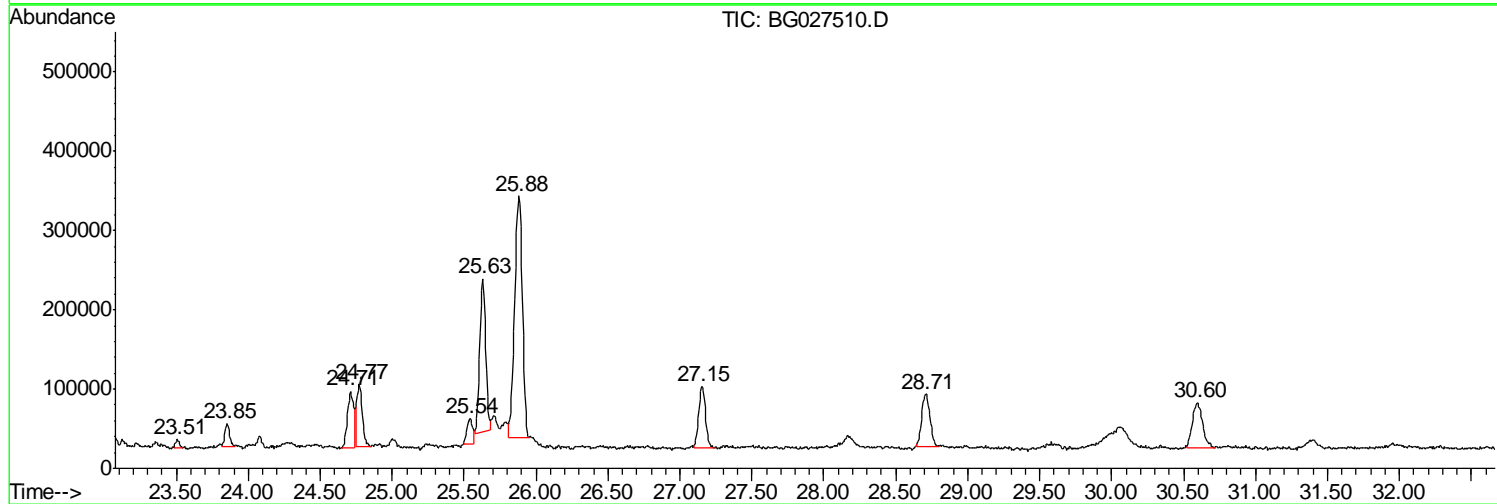
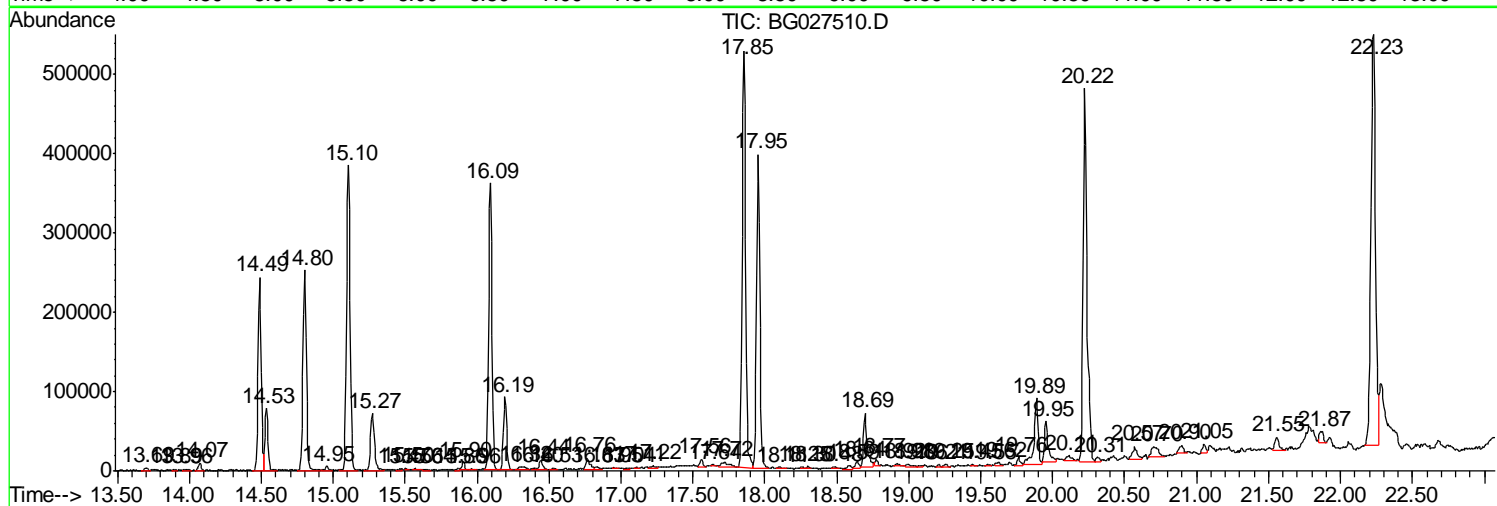
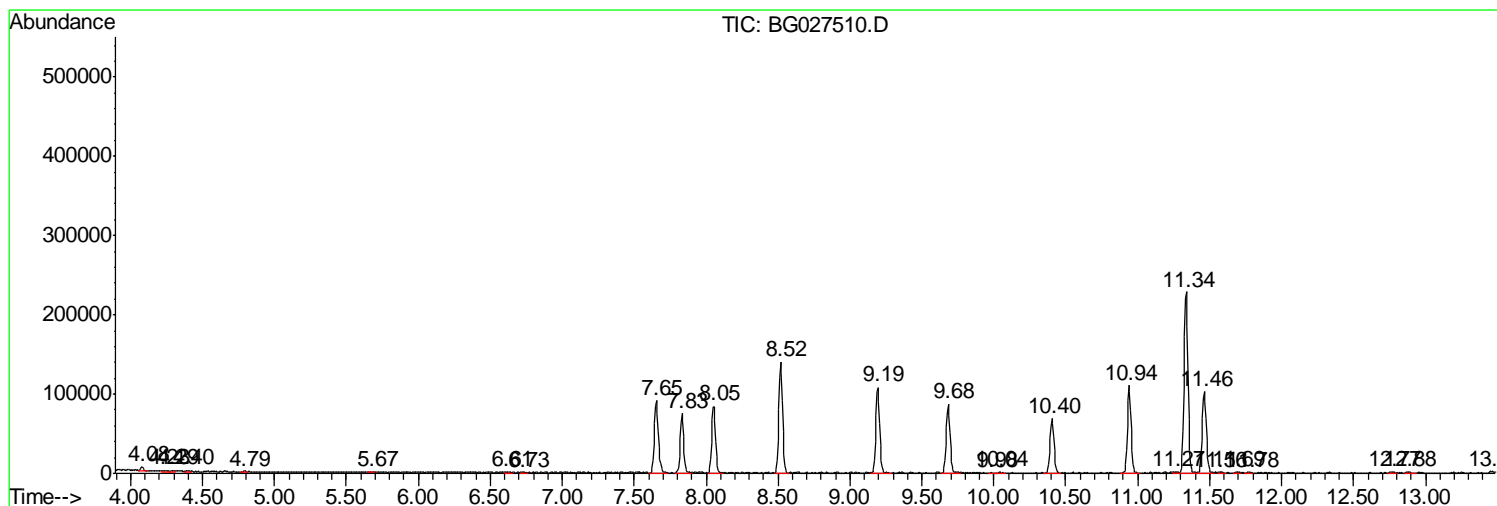
Sum of corrected areas: 12007550

Data Path : Z:\HPCHEM1\BNA_G\DATA\BG061617\
 Data File : BG027510.D
 Acq On : 17 Jun 2017 17:11
 Operator : SJ/MA
 Sample : I3599-05
 Misc :
 ALS Vial : 42 Sample Multiplier: 1

Instrument :
 BNA_G
 ClientSampled :
 F5A81

Quant Method : Z:\HPCHEM1\BNA_G\METHODS\SOM-EPA-BG061617.M
 Quant Title : SVOA CALIBRATION

TIC Library : C:\DATABASE\NIST11.L
 TIC Integration Parameters: LSCINT.P



Data Path : Z:\HPCHEM1\BNA_G\DATA\BG061617\
 Data File : BG027510.D
 Acq On : 17 Jun 2017 17:11
 Operator : SJ/MA
 Sample : I3599-05
 Misc :
 ALS Vial : 42 Sample Multiplier: 1

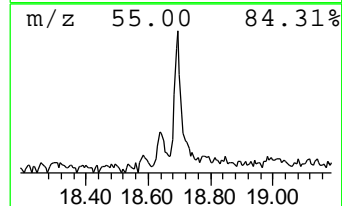
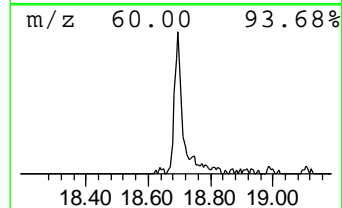
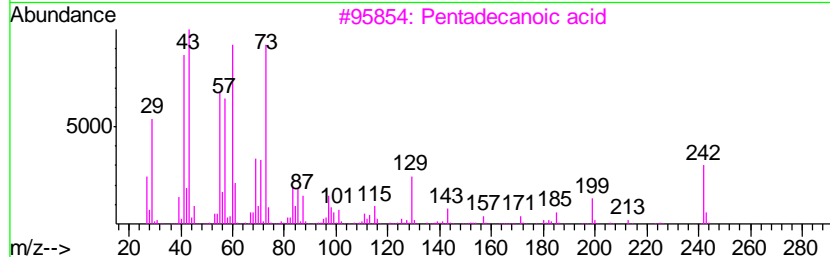
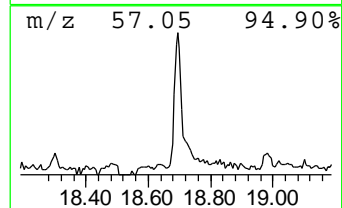
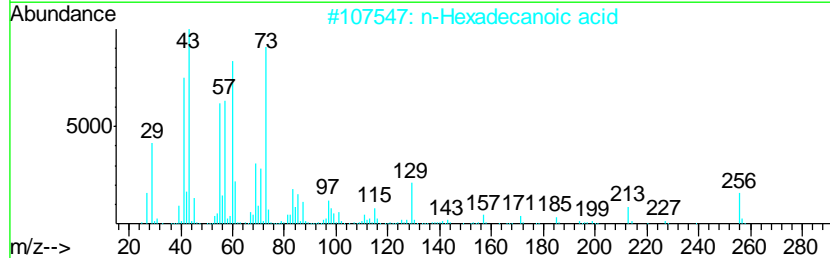
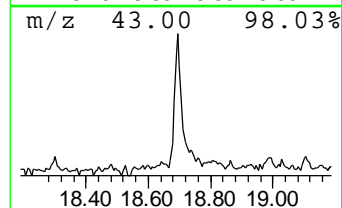
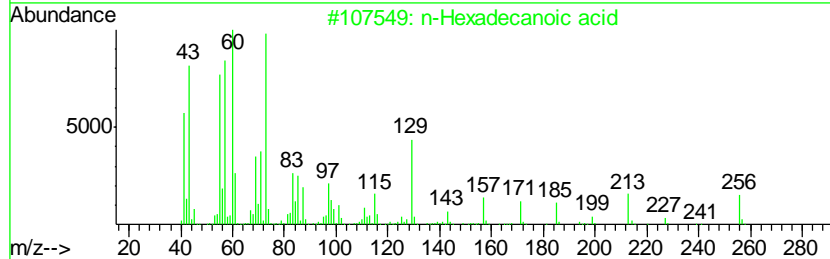
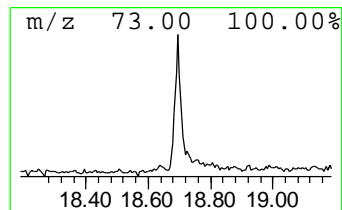
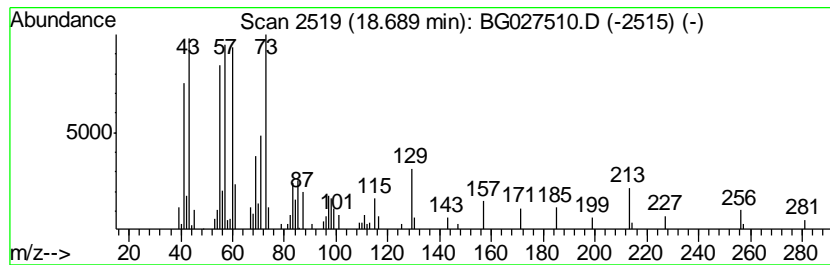
Instrument :
 BNA_G
 ClientSampleID :
 F5A81

Quant Method : Z:\HPCHEM1\BNA_G\METHODS\SOM-EPA-BG061617.M
 Quant Title : SVOA CALIBRATION

TIC Library : C:\DATABASE\NIST11.L
 TIC Integration Parameters: LSCINT.P

 Peak Number 1 n-Hexadecanoic acid Concentration Rank 4

R.T.	EstConc	Area	Relative to ISTD	R.T.
18.69	2.67 ng/ul	116054	Phenanthrene-d10	17.85
Hit# of	5	Tentative ID	MW MolForm	CAS# Qual
1		n-Hexadecanoic acid	256 C16H32O2	000057-10-3 99
2		n-Hexadecanoic acid	256 C16H32O2	000057-10-3 93
3		Pentadecanoic acid	242 C15H30O2	001002-84-2 80
4		Tridecanoic acid	214 C13H26O2	000638-53-9 68
5		Undecanoic acid	186 C11H22O2	000112-37-8 64



Data Path : Z:\HPCHEM1\BNA_G\DATA\BG061617\
 Data File : BG027510.D
 Acq On : 17 Jun 2017 17:11
 Operator : SJ/MA
 Sample : I3599-05
 Misc :
 ALS Vial : 42 Sample Multiplier: 1

Instrument :
 BNA_G
 ClientSampleID :
 F5A81

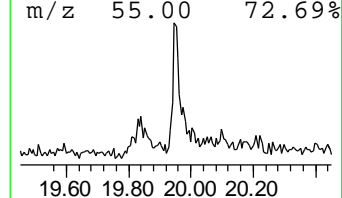
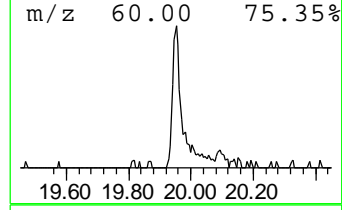
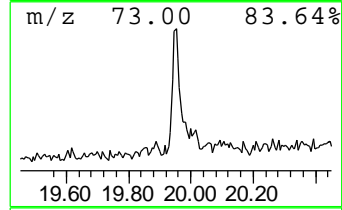
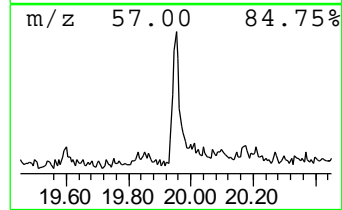
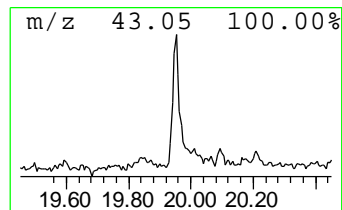
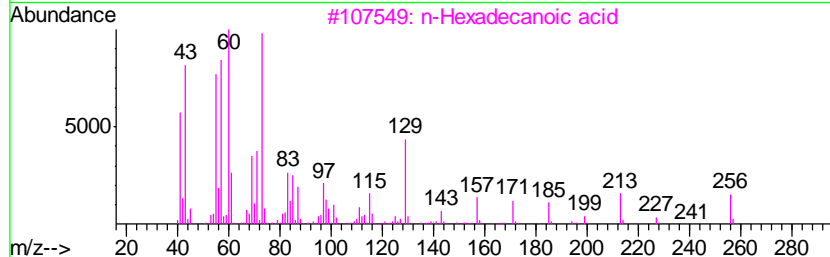
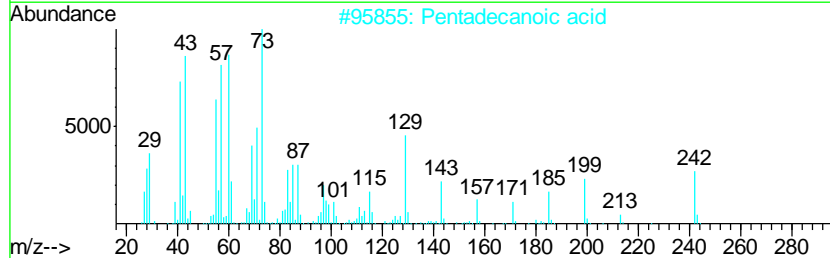
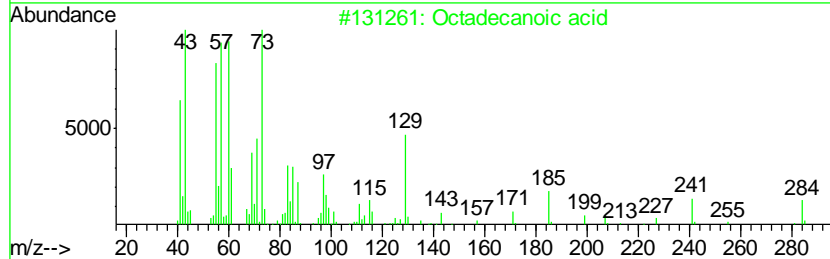
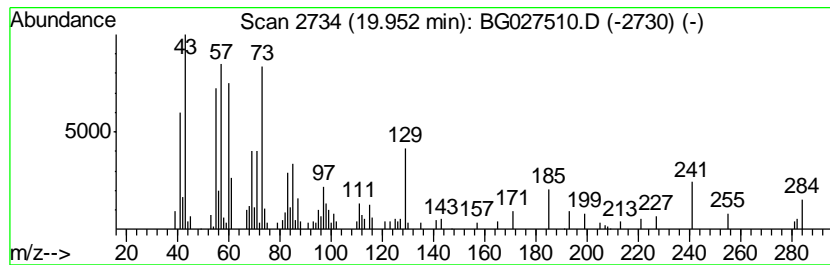
Quant Method : Z:\HPCHEM1\BNA_G\METHODS\SOM-EPA-BG061617.M
 Quant Title : SVOA CALIBRATION

TIC Library : C:\DATABASE\NIST11.L
 TIC Integration Parameters: LSCINT.P

 Peak Number 2 Octadecanoic acid Concentration Rank 5

R.T.	EstConc	Area	Relative to ISTD	R.T.
19.95	2.12 ng/ul	92120	Phenanthrene-d10	17.85

Hit#	of	Tentative ID	MW	MolForm	CAS#	Qual
1	5	Octadecanoic acid	284	C18H36O2	000057-11-4	99
2		Pentadecanoic acid	242	C15H30O2	001002-84-2	80
3		n-Hexadecanoic acid	256	C16H32O2	000057-10-3	74
4		Tetradecanoic acid	228	C14H28O2	000544-63-8	59
5		Tridecanoic acid	214	C13H26O2	000638-53-9	50



Data Path : Z:\HPCHEM1\BNA_G\DATA\BG061617\
 Data File : BG027510.D
 Acq On : 17 Jun 2017 17:11
 Operator : SJ/MA
 Sample : I3599-05
 Misc :
 ALS Vial : 42 Sample Multiplier: 1

Instrument :
 BNA_G
 ClientSampleID :
 F5A81

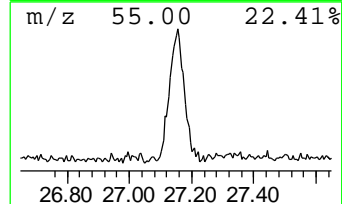
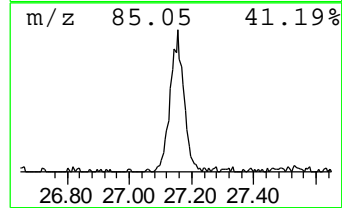
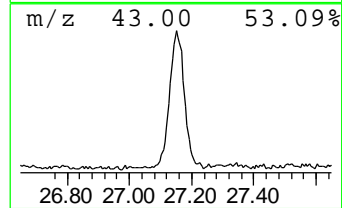
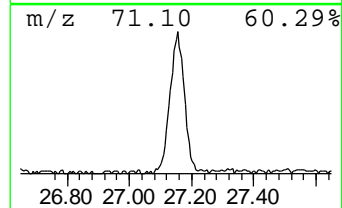
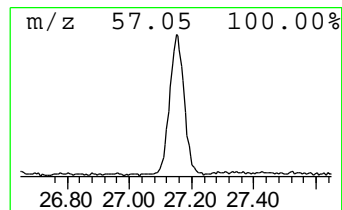
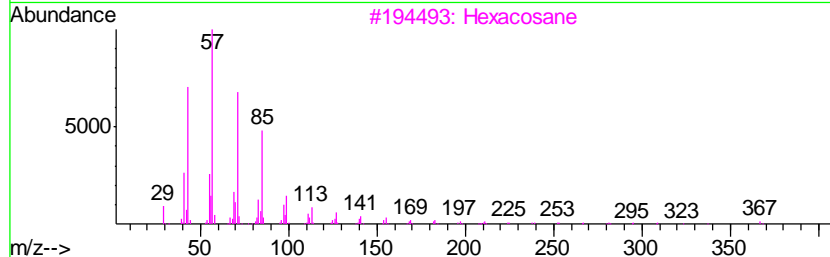
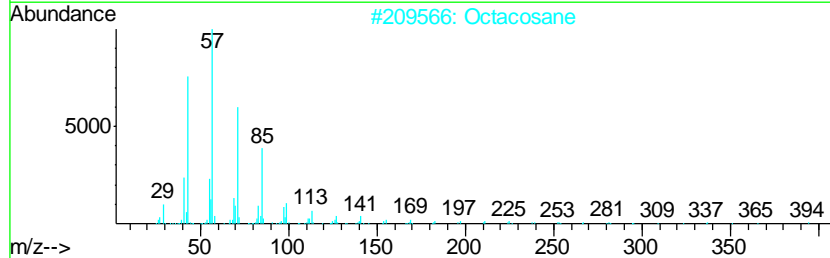
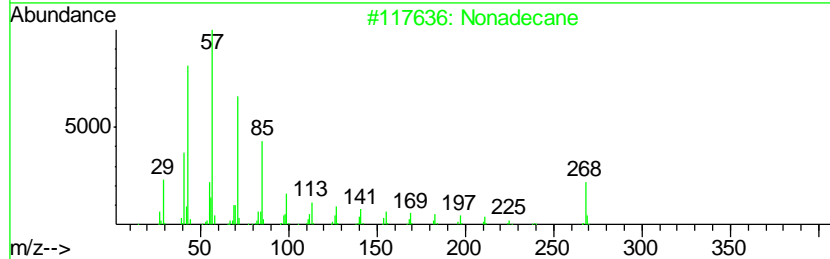
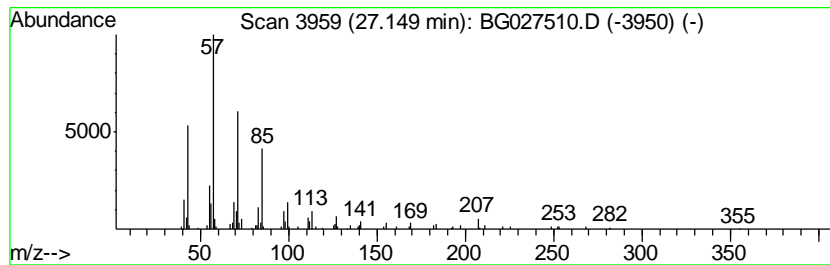
Quant Method : Z:\HPCHEM1\BNA_G\METHODS\SOM-EPA-BG061617.M
 Quant Title : SVOA CALIBRATION

TIC Library : C:\DATABASE\NIST11.L
 TIC Integration Parameters: LSCINT.P

 Peak Number 3 (DEL) Alkane: Straight-Chai... Concentration Rank 3

R.T.	EstConc	Area	Relative to ISTD	R.T.
27.15	4.43 ng/ul	250469	Perylene-d12	25.89

Hit#	of	Tentative ID	MW	MolForm	CAS#	Qual
1	5	Nonadecane	268	C19H40	000629-92-5	91
2		Octacosane	394	C28H58	000630-02-4	90
3		Hexacosane	366	C26H54	000630-01-3	90
4		Heptacosane	380	C27H56	000593-49-7	87
5		Tetracosane	338	C24H50	000646-31-1	87



Data Path : Z:\HPCHEM1\BNA_G\DATA\BG061617\
 Data File : BG027510.D
 Acq On : 17 Jun 2017 17:11
 Operator : SJ/MA
 Sample : I3599-05
 Misc :
 ALS Vial : 42 Sample Multiplier: 1

Instrument :
 BNA_G
 ClientSampleId :
 F5A81

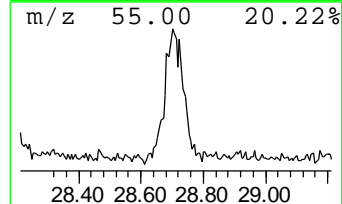
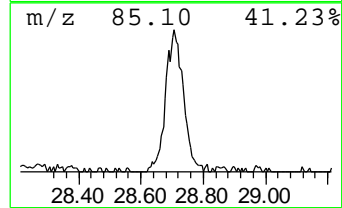
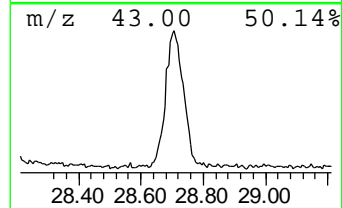
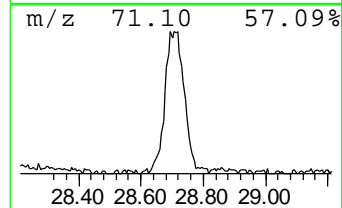
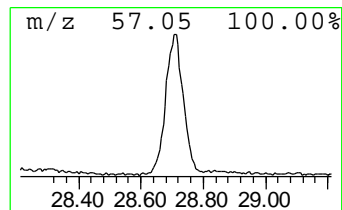
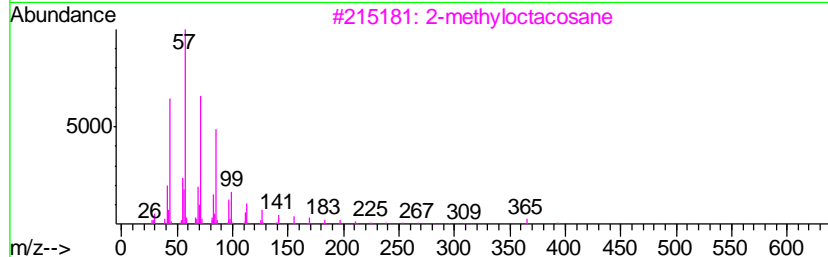
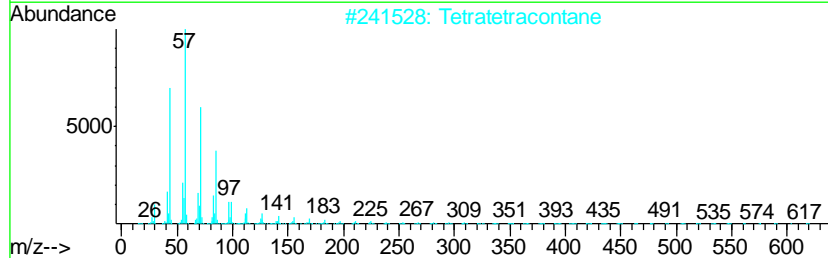
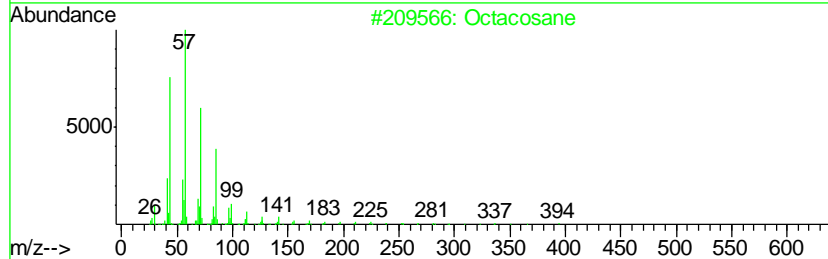
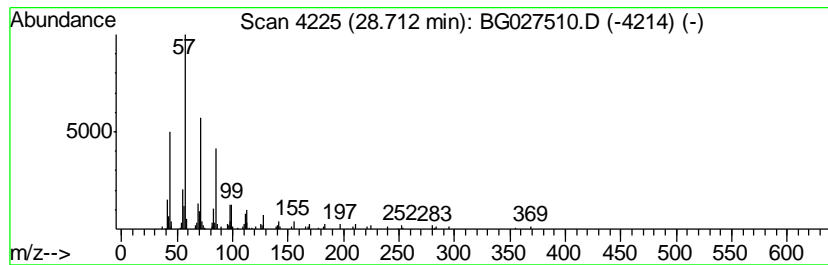
Quant Method : Z:\HPCHEM1\BNA_G\METHODS\SOM-EPA-BG061617.M
 Quant Title : SVOA CALIBRATION

TIC Library : C:\DATABASE\NIST11.L
 TIC Integration Parameters: LSCINT.P

 Peak Number 4 (DEL) Alkane: Straight-Chai... Concentration Rank 2

R.T.	EstConc	Area	Relative to ISTD	R.T.
28.71	4.71 ng/ul	266444	Perylene-d12	25.89

Hit#	of	Tentative ID	MW	MolForm	CAS#	Qual
1	5	Octacosane	394	C28H58	000630-02-4	90
2		Tetratetracontane	619	C44H90	007098-22-8	90
3		2-methyloctacosane	408	C29H60	1000376-72-8	90
4		Octadecane	254	C18H38	000593-45-3	87
5		Hexacosane	366	C26H54	000630-01-3	87



Data Path : Z:\HPCHEM1\BNA_G\DATA\BG061617\
 Data File : BG027510.D
 Acq On : 17 Jun 2017 17:11
 Operator : SJ/MA
 Sample : I3599-05
 Misc :
 ALS Vial : 42 Sample Multiplier: 1

Instrument :
 BNA_G
 ClientSampleID :
 F5A81

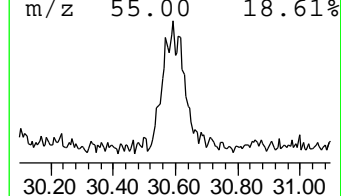
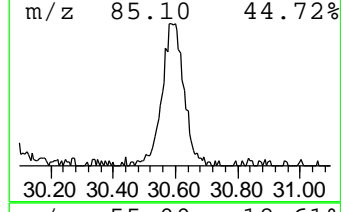
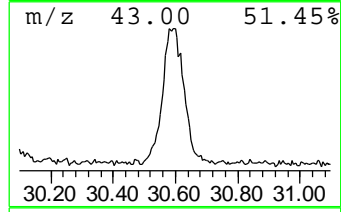
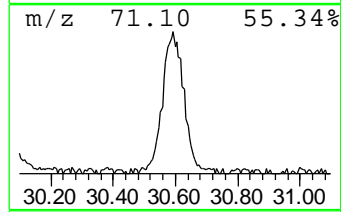
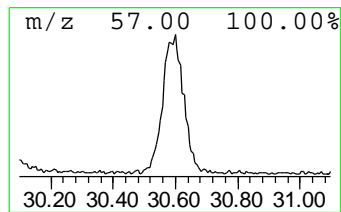
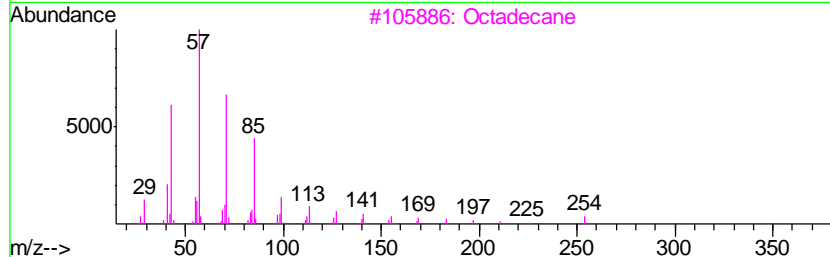
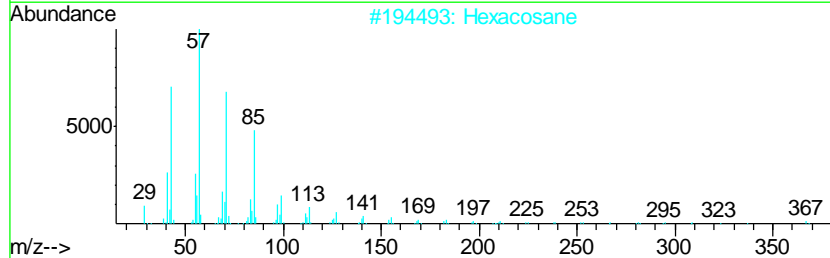
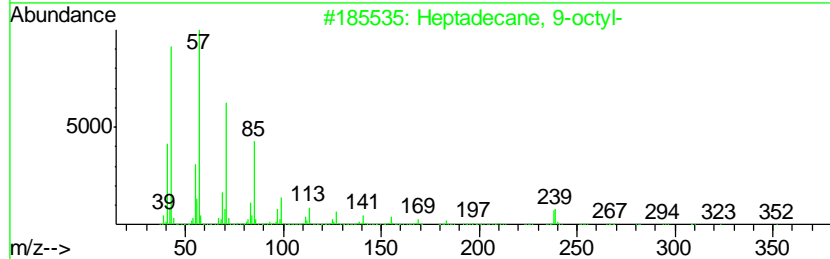
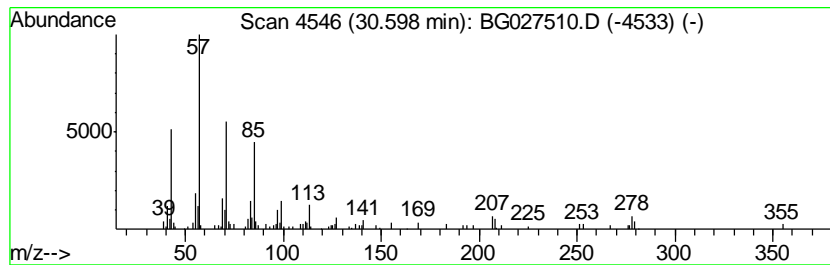
Quant Method : Z:\HPCHEM1\BNA_G\METHODS\SOM-EPA-BG061617.M
 Quant Title : SVOA CALIBRATION

TIC Library : C:\DATABASE\NIST11.L
 TIC Integration Parameters: LSCINT.P

 Peak Number 5 (DEL) Alkane: Straight-Chai... Concentration Rank 1

R.T.	EstConc	Area	Relative to ISTD	R.T.
30.60	4.93 ng/ul	278888	Perylene-d12	25.89

Hit#	of	Tentative ID	MW	MolForm	CAS#	Qual
1	5	Heptadecane, 9-octyl-	352	C25H52	007225-64-1	87
2		Hexacosane	366	C26H54	000630-01-3	87
3		Octadecane	254	C18H38	000593-45-3	87
4		Heneicosane	296	C21H44	000629-94-7	87
5		Heneicosane, 11-(1-ethylpropyl)-	366	C26H54	055282-11-6	87



Data Path : Z:\HPCHEM1\BNA_G\DATA\BG061617\
 Data File : BG027510.D
 Acq On : 17 Jun 2017 17:11
 Operator : SJ/MA
 Sample : I3599-05
 Misc :
 ALS Vial : 42 Sample Multiplier: 1

Instrument :
 BNA_G
 ClientSampleId :
 F5A81

Quant Method : Z:\HPCHEM1\BNA_G\METHODS\SOM-EPA-BG061617.M
 Quant Title : SVOA CALIBRATION

TIC Library : C:\DATABASE\NIST11.L
 TIC Integration Parameters: LSCINT.P

TIC Top Hit name	RT	EstConc	Units	Response	--Internal Standard--			
					#	RT	Resp	Conc
n-Hexadecanoic acid	18.69	2.7	ng/ul	116054	4	17.85	867778	20.0
Octadecanoic acid	19.95	2.1	ng/ul	92120	4	17.85	867778	20.0
(DEL) Alkane: Str...	27.15	4.4	ng/ul	250469	6	25.89	1131220	20.0
(DEL) Alkane: Str...	28.71	4.7	ng/ul	266444	6	25.89	1131220	20.0
(DEL) Alkane: Str...	30.60	4.9	ng/ul	278888	6	25.89	1131220	20.0