

Data File : BG027555.D
 Acq On : 20 Jun 2017 16:07
 Operator : SJ/MA
 Sample : SSTDCCC020
 Misc :
 ALS Vial : 2 Sample Multiplier: 1

Instrument :
 BNA_G
 ClientSampleId :
 SSTD02092

Quant Time: Jun 21 00:57:15 2017
 Quant Method : Z:\HPCHEM1\BNA_G\METHODS\SOM-EPA-BG061617.M
 Quant Title : SVOA CALIBRATION
 QLast Update : Tue Jun 20 01:50:01 2017
 Response via : Initial Calibration

Internal Standards	R.T.	QIon	Response	Conc	Units	Dev(Min)
1) 1,4-Dichlorobenzene-d4	8.51	152	26545	20.00	ng/ul	0.00
18) Naphthalene-d8	11.33	136	137292	20.00	ng/ul	-0.01
35) Acenaphthene-d10	15.10	164	94911	20.00	ng/ul	0.00
61) Phenanthrene-d10	17.84	188	240204	20.00	ng/ul	-0.01
75) Chrysene-d12	22.21	240	266038	20.00	ng/ul	-0.02
83) Perylene-d12	25.86	264	253973	20.00	ng/ul	-0.03

System Monitoring Compounds

3) 1,4-Dioxane-d8	4.07	96	4624	6.97	ng/uL	-0.01
5) Phenol-d5	7.65	99	56522	19.63	ng/ul	0.00
7) Bis-(2-Chloroethyl)ether-d	7.82	67	38655	19.70	ng/ul	0.00
9) 2-Chlorophenol-d4	8.05	132	40816	21.46	ng/ul	0.00
13) 4-Methylphenol-d8	9.19	113	47407	21.06	ng/ul	-0.01
19) Nitrobenzene-d5	9.67	128	19662	19.72	ng/ul	0.00
22) 2-Nitrophenol-d4	10.40	143	26795	25.29	ng/ul	0.00
26) 2,4-Dichlorophenol-d3	10.94	165	46787	23.37	ng/ul	0.00
29) 4-Chloroaniline-d4	11.46	131	60919	24.04	ng/ul	0.00
43) Dimethylphthalate-d6	14.48	166	166672	20.97	ng/ul	-0.01
46) Acenaphthylene-d8	14.79	160	191869	20.96	ng/ul	-0.01
51) 4-Nitrophenol-d4	15.26	143	26499	17.05	ng/ul	-0.01
57) Fluorene-d10	16.08	176	157671	21.15	ng/ul	-0.01
62) 4,6-Dinitro-2-methylphenol	16.19	200	4411	2.96	ng/ul	0.00
70) Anthracene-d10	17.94	188	232593	20.77	ng/ul	-0.01
76) Pyrene-d10	20.21	212	260140	20.02	ng/ul	-0.01
87) Benzo(a)pyrene-d12	25.60	264	241524	21.12	ng/ul	-0.02

Target Compounds

Target Compounds	R.T.	QIon	Response	Conc	Units	Qvalue
2) 1,4-Dioxane	4.10	88	6652	8.66	ng/uL	97
4) Benzaldehyde	7.65	77	41844	24.86	ng/ul	94
6) Phenol	7.68	94	60223	19.96	ng/ul	90
8) Bis(2-Chloroethyl)ether	7.92	93	43598	19.65	ng/ul	98
10) 2-Chlorophenol	8.08	128	42134	22.01	ng/ul	94
11) 2-Methylphenol	8.93	108	43408	19.91	ng/ul	95
12) 2,2'-oxybis(1-Chloropropan	9.03	45	75141	20.35	ng/ul#	95
14) Acetophenone	9.33	105	74054	21.29	ng/ul#	88
15) N-Nitroso-di-n-propylamine	9.30	70	45468	23.14	ng/ul#	88
16) 4-Methylphenol	9.25	108	48638	20.31	ng/ul	92
17) Hexachloroethane	9.60	117	17143	23.36	ng/ul#	76
20) Nitrobenzene	9.72	77	60313	21.47	ng/ul	93
21) Isophorone	10.23	82	120333	21.72	ng/ul#	95
23) 2-Nitrophenol	10.43	139	28828	24.78	ng/ul	83
24) 2,4-Dimethylphenol	10.46	107	60591	21.86	ng/ul	97
25) Bis(2-Chloroethoxy)methane	10.70	93	65479	19.21	ng/ul#	95
27) 2,4-Dichlorophenol	10.96	162	46805	23.13	ng/ul	98
28) Naphthalene	11.38	128	142212	20.16	ng/ul	98
30) 4-Chloroaniline	11.48	127	58424	23.36	ng/ul	96
31) Hexachlorobutadiene	11.65	225	29961	24.07	ng/ul	92
32) Caprolactam	12.24	113	19376	21.71	ng/ul	91
33) 4-Chloro-3-methylphenol	12.55	107	63520	23.84	ng/ul	96
34) 2-Methylnaphthalene	12.95	142	109645	20.96	ng/ul	94

Data File : BG027555.D
 Acq On : 20 Jun 2017 16:07
 Operator : SJ/MA
 Sample : SSTDCCC020
 Misc :
 ALS Vial : 2 Sample Multiplier: 1

Instrument :
 BNA_G
 ClientSampleId :
 SSTD02092

Quant Time: Jun 21 00:57:15 2017
 Quant Method : Z:\HPCHEM1\BNA_G\METHODS\SOM-EPA-BG061617.M
 Quant Title : SVOA CALIBRATION
 QLast Update : Tue Jun 20 01:50:01 2017
 Response via : Initial Calibration

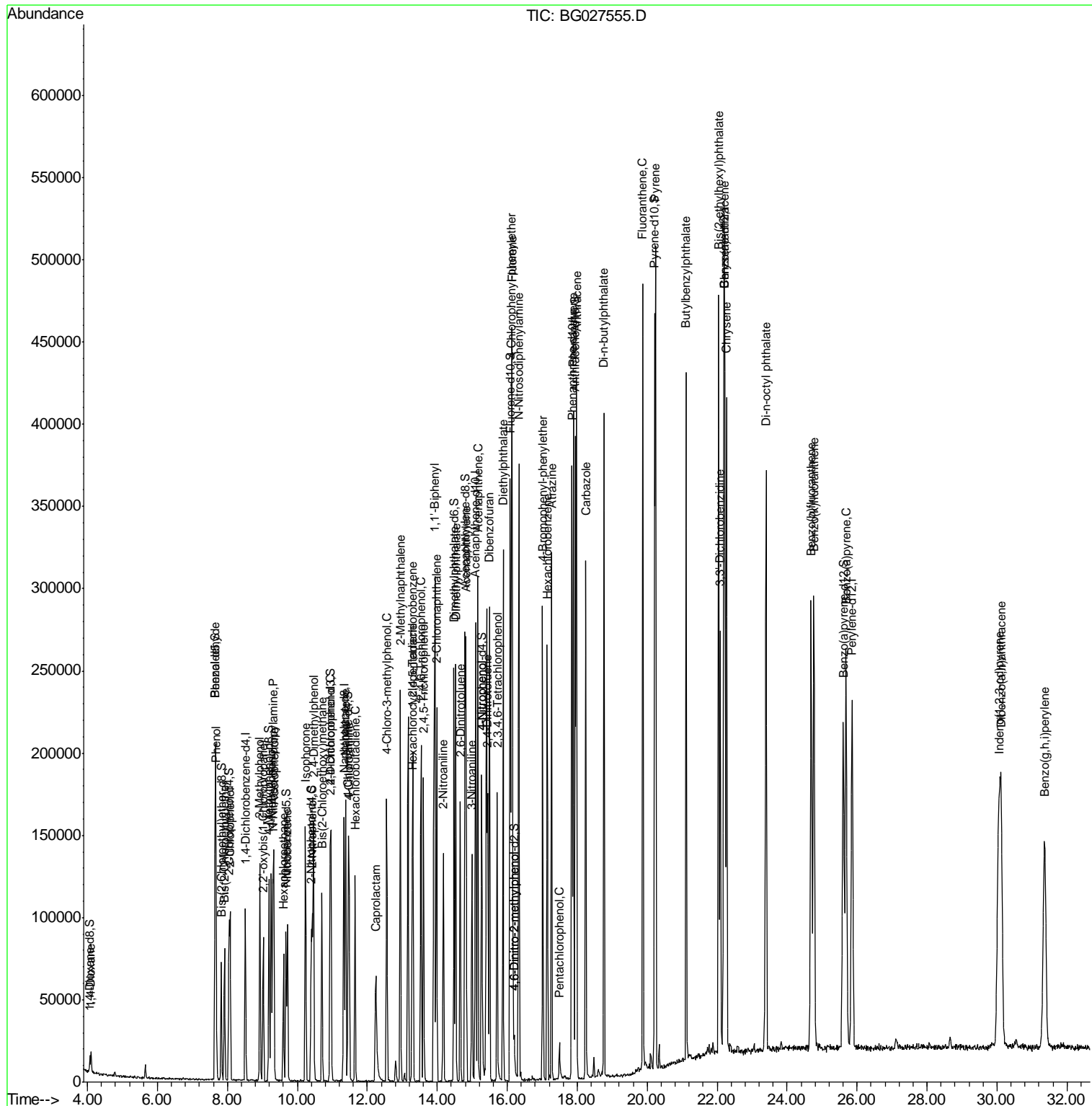
Internal Standards	R.T.	QIon	Response	Conc	Units	Dev(Min)
36) 1,2,4,5-Tetrachlorobenzene	13.31	216	63315	22.54	ng/ul	93
37) Hexachlorocyclopentadiene	13.28	237	30847	19.60	ng/ul	96
38) 2,4,6-Trichlorophenol	13.54	196	49076	26.40	ng/ul	95
39) 2,4,5-Trichlorophenol	13.61	196	49244	25.44	ng/ul	98
40) 1,1'-Biphenyl	13.93	154	149707	19.94	ng/ul#	97
41) 2-Chloronaphthalene	13.98	162	115967	20.48	ng/ul	96
42) 2-Nitroaniline	14.18	65	48570	22.80	ng/ul	95
44) Dimethylphthalate	14.53	163	162923	20.67	ng/ul	98
45) 2,6-Dinitrotoluene	14.66	165	31445	21.43	ng/ul	96
47) Acenaphthylene	14.82	152	188642	20.57	ng/ul	100
48) 3-Nitroaniline	14.99	138	31693	19.90	ng/ul#	97
49) Acenaphthene	15.16	153	129380	20.22	ng/ul	100
52) 4-Nitrophenol	15.27	109	26050	21.07	ng/ul#	67
53) Dibenzofuran	15.49	168	192157	20.61	ng/ul	98
54) 2,4-Dinitrotoluene	15.44	165	45983	20.47	ng/ul#	94
55) 2,3,4,6-Tetrachlorophenol	15.71	232	40430	21.47	ng/ul#	94
56) Diethylphthalate	15.88	149	172078	20.66	ng/ul	97
58) Fluorene	16.14	166	161988	20.94	ng/ul	99
59) 4-Chlorophenyl-phenylether	16.12	204	84902	21.83	ng/ul	89
63) 4,6-Dinitro-2-methylphenol	16.20	198	3910	2.48	ng/ul#	93
64) N-Nitrosodiphenylamine	16.33	169	144496	20.91	ng/ul	91
65) 4-Bromophenyl-phenylether	17.02	248	56175	23.09	ng/ul	92
66) Hexachlorobenzene	17.14	284	60554	23.63	ng/ul	97
67) Atrazine	17.27	200	56811	21.47	ng/ul	97
68) Pentachlorophenol	17.49	266	6760	3.97	ng/ul	86
69) Phenanthrene	17.89	178	261634	20.27	ng/ul	99
71) Anthracene	17.98	178	270495	20.61	ng/ul	98
72) Carbazole	18.24	167	214261	18.98	ng/ul	99
73) Di-n-butylphthalate	18.76	149	282264	20.22	ng/ul	97
74) Fluoranthene	19.87	202	303926	20.93	ng/ul#	90
77) Pyrene	20.24	202	312697	19.88	ng/ul#	89
78) Butylbenzylphthalate	21.11	149	127719	21.55	ng/ul	94
79) 3,3'-Dichlorobenzidine	22.09	252	105064	21.45	ng/ul#	94
80) Benzo(a)anthracene	22.19	228	313321	21.15	ng/ul	99
81) Bis(2-ethylhexyl)phthalate	22.04	149	184419	21.67	ng/ul	99
82) Chrysene	22.27	228	284512	21.26	ng/ul	99
84) Di-n-octyl phthalate	23.40	149	315555	19.83	ng/ul	100
85) Benzo(b)fluoranthene	24.69	252	315784	20.88	ng/ul#	98
86) Benzo(k)fluoranthene	24.76	252	298066	20.50	ng/ul#	95
88) Benzo(a)pyrene	25.69	252	299168	20.60	ng/ul#	96
89) Indeno(1,2,3-cd)pyrene	30.05	276	348278	21.01	ng/ul#	95
90) Dibenzo(a,h)anthracene	30.12	278	294262	20.67	ng/ul#	94
91) Benzo(g,h,i)perylene	31.36	276	289278	21.31	ng/ul#	94

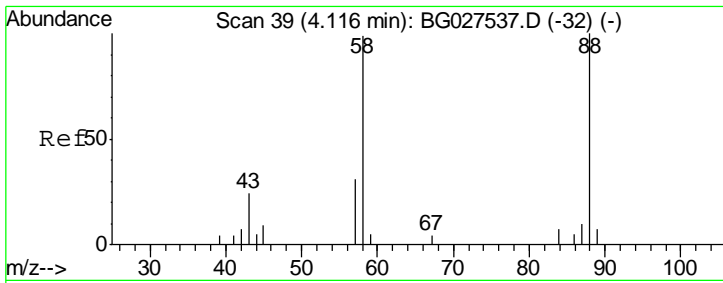
(#) = qualifier out of range (m) = manual integration (+) = signals summed

Data File : BG027555.D
Acq On : 20 Jun 2017 16:07
Operator : SJ/MA
Sample : SSTDCCC020
Misc :
ALS Vial : 2 Sample Multiplier: 1

Instrument :
BNA_G
Client Sampled :
SSTD02092

Quant Time: Jun 21 00:57:15 2017
Quant Method : Z:\HPCHEM1\BNA_G\METHODS\SOM-EPA-BG061617.M
Quant Title : SVOA CALIBRATION
QLast Update : Tue Jun 20 01:50:01 2017
Response via : Initial Calibration



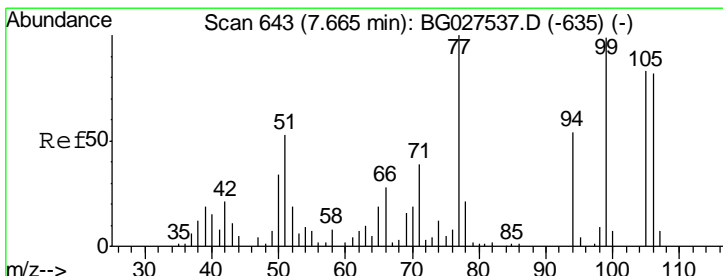
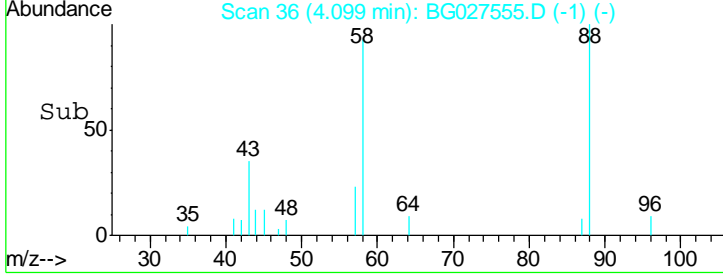
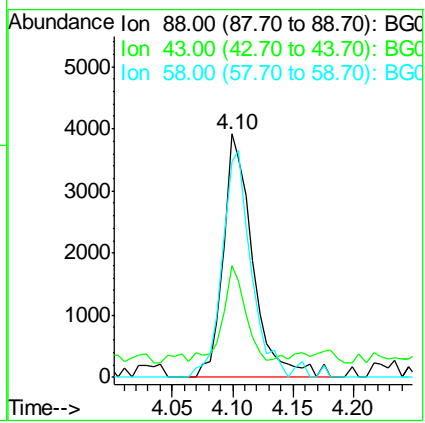
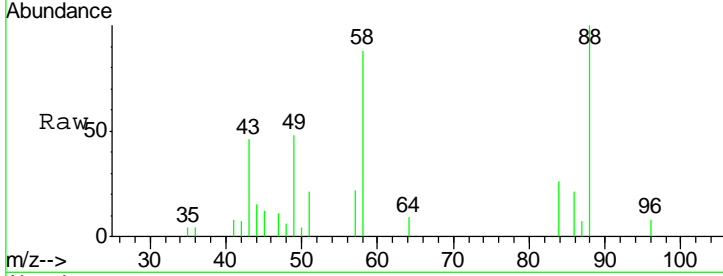


#2
 1,4-Dioxane
 Concen: 8.66 ng/uL
 RT: 4.10 min Scan# 36
 Delta R.T. -0.02 min
 Lab File: BG027555.D
 Acq: 20 Jun 2017 16:07

Instrument :
 BNA_G
ClientSampled :
 SST02092

Tgt Ion: 88 Resp: 6652

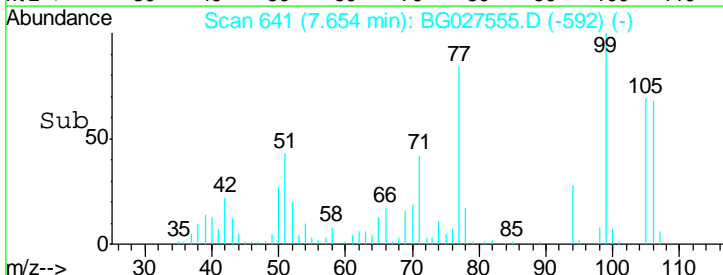
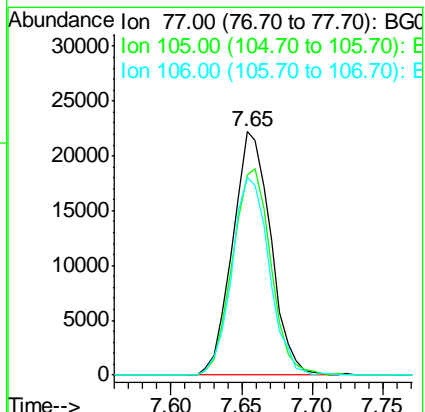
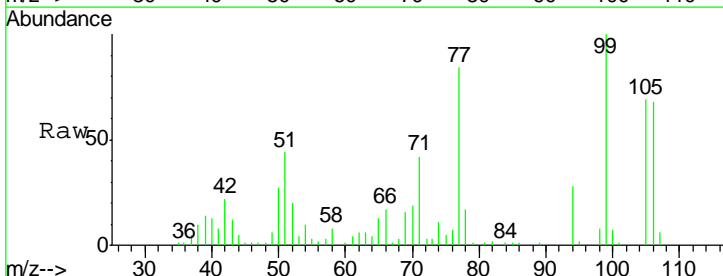
Ion	Ratio	Lower	Upper
88	100		
43	46.1	39.2	58.8
58	88.3	69.4	104.0

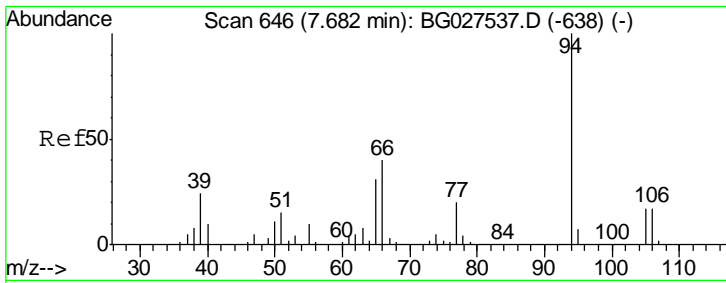


#4
 Benzaldehyde
 Concen: 24.86 ng/uL
 RT: 7.65 min Scan# 641
 Delta R.T. -0.01 min
 Lab File: BG027555.D
 Acq: 20 Jun 2017 16:07

Tgt Ion: 77 Resp: 41844

Ion	Ratio	Lower	Upper
77	100		
105	82.2	62.0	93.0
106	81.3	60.2	90.4

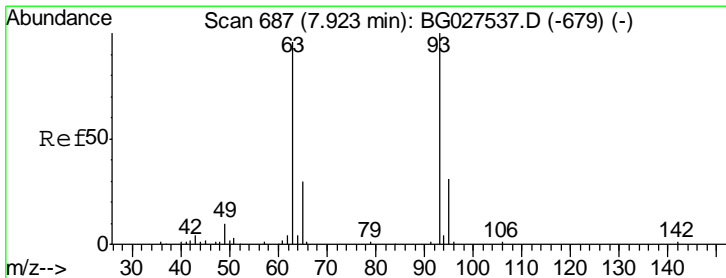
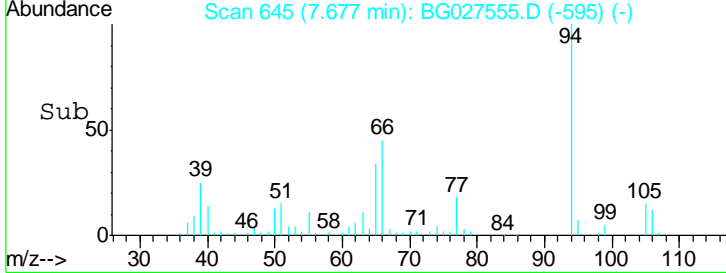
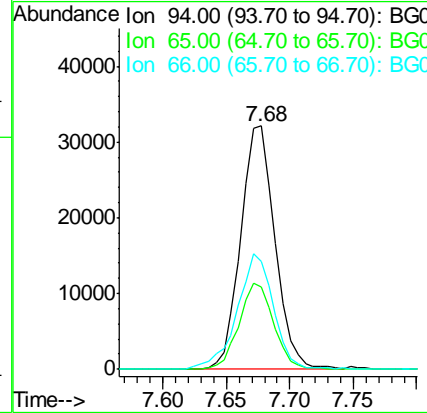
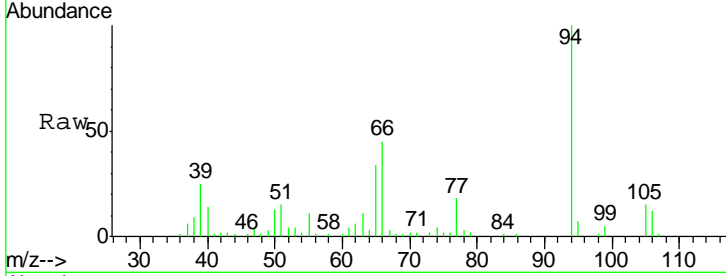




#6
 Phenol
 Concen: 19.96 ng/ul
 RT: 7.68 min Scan# 645
 Delta R.T. -0.01 min
 Lab File: BG027555.D
 Acq: 20 Jun 2017 16:07

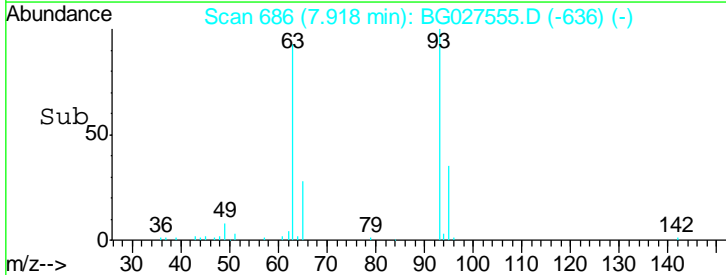
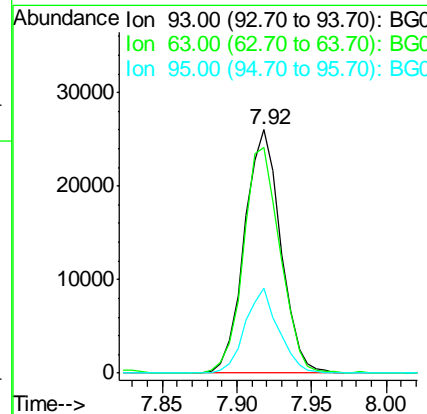
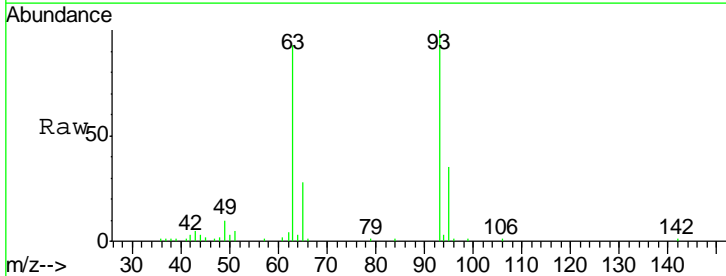
Instrument :
 BNA_G
 ClientSampleID :
 SSTD02092

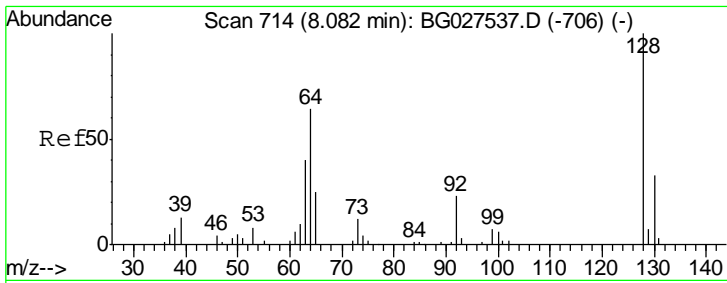
Tgt Ion	Resp	Lower	Upper
94	60223		
65	33.9	26.8	40.2
66	44.5	44.4	66.6



#8
 Bis(2-Chloroethyl)ether
 Concen: 19.65 ng/ul
 RT: 7.92 min Scan# 686
 Delta R.T. -0.01 min
 Lab File: BG027555.D
 Acq: 20 Jun 2017 16:07

Tgt Ion	Resp	Lower	Upper
93	43598		
63	92.6	75.5	113.3
95	35.1	29.2	43.8

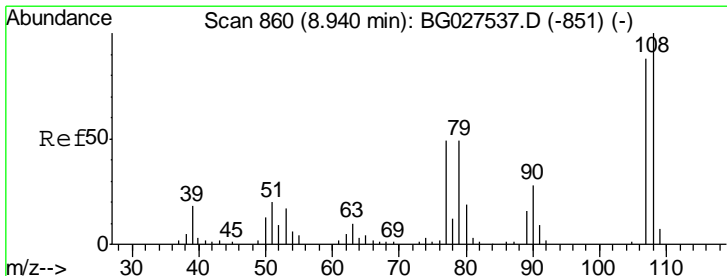
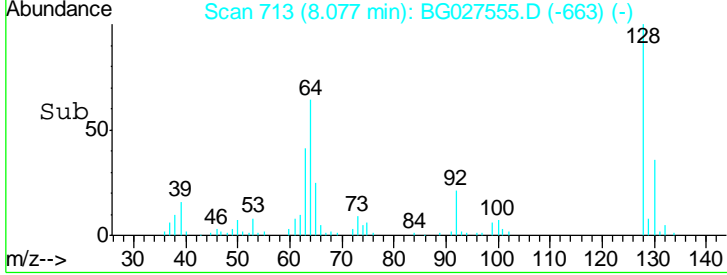
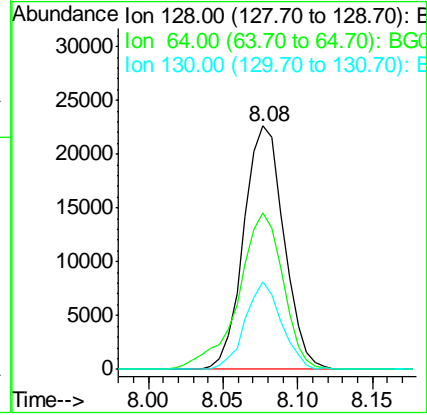
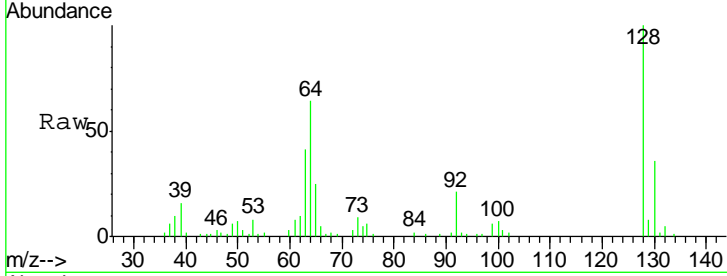




#10
 2-Chlorophenol
 Concen: 22.01 ng/ul
 RT: 8.08 min Scan# 713
 Delta R.T. -0.01 min
 Lab File: BG027555.D
 Acq: 20 Jun 2017 16:07

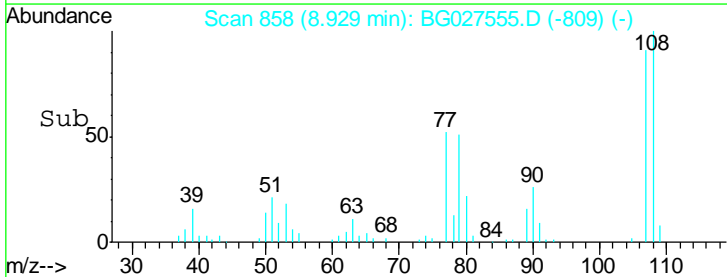
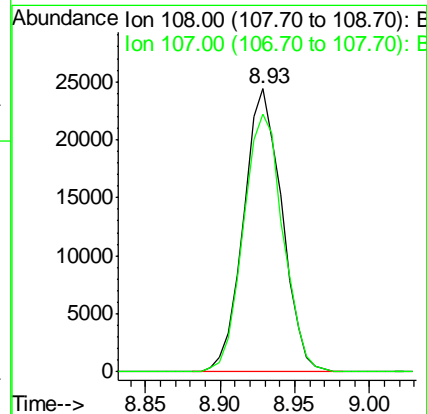
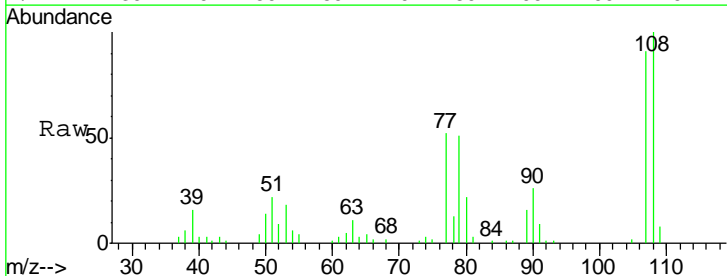
Instrument :
 BNA_G
 ClientSampleId :
 SST02092

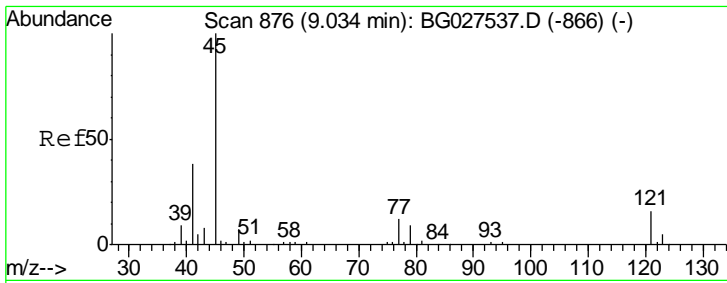
Tgt Ion	Resp	Lower	Upper
128	42134		
64	64.2	56.3	84.5
130	35.7	26.7	40.1



#11
 2-Methylphenol
 Concen: 19.91 ng/ul
 RT: 8.93 min Scan# 858
 Delta R.T. -0.01 min
 Lab File: BG027555.D
 Acq: 20 Jun 2017 16:07

Tgt Ion	Resp	Lower	Upper
108	43408		
107	91.1	76.7	115.1

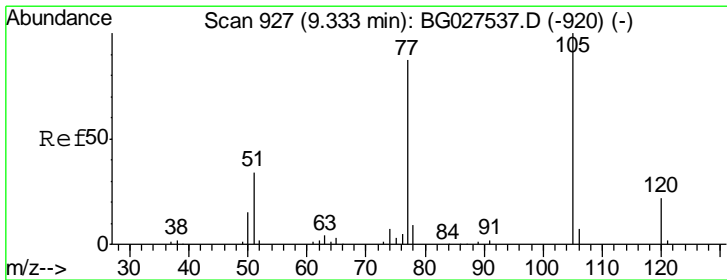
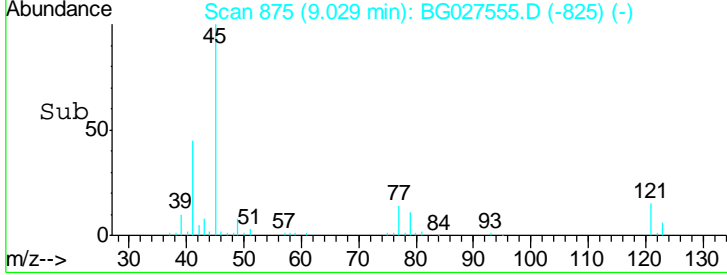
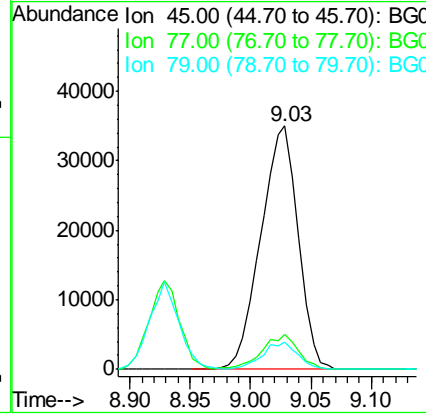
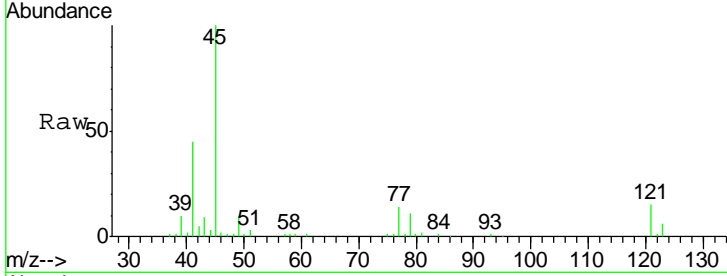




#12
 2,2'-oxybis(1-Chloropropane)
 Concen: 20.35 ng/ul
 RT: 9.03 min Scan# 875
 Delta R.T. -0.01 min
 Lab File: BG027555.D
 Acq: 20 Jun 2017 16:07

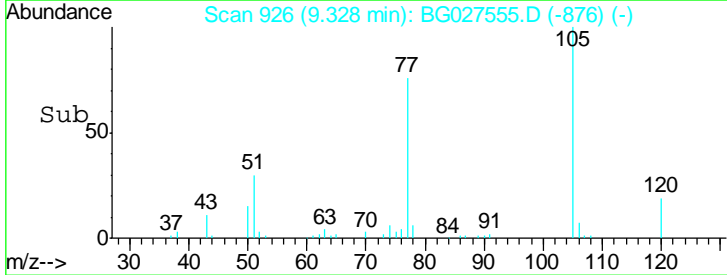
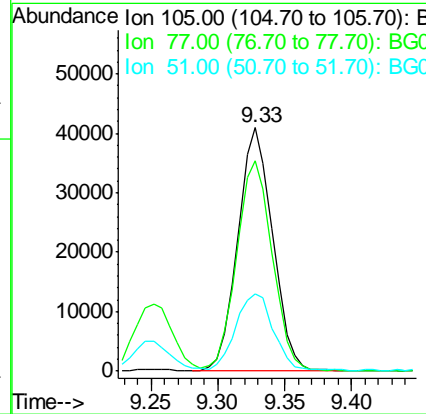
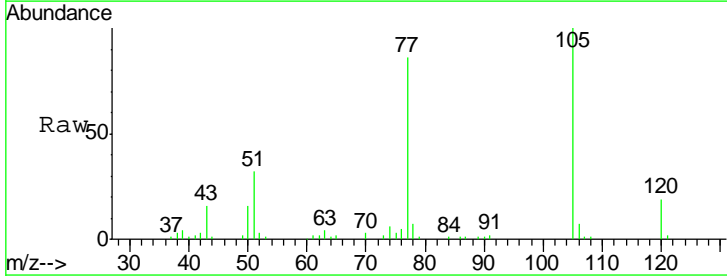
Instrument :
 BNA_G
 ClientSampleId :
 SSTD02092

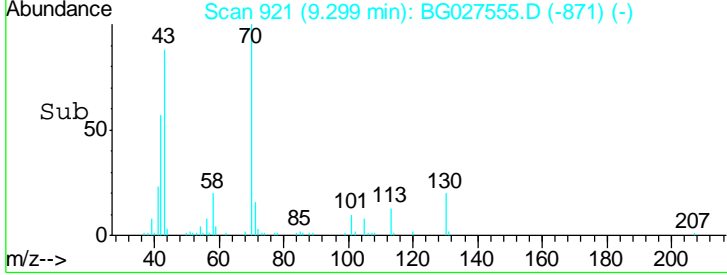
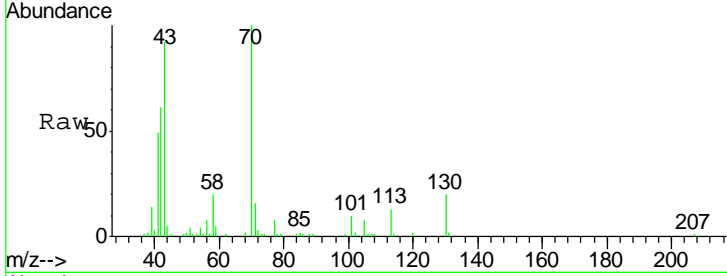
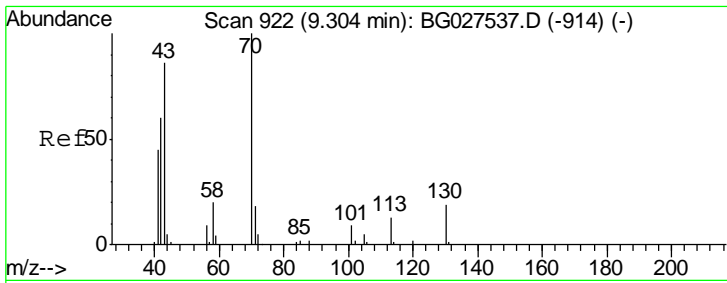
Tgt Ion	Resp	Lower	Upper
45	75141		
77	14.3	10.0	15.0
79	11.0	7.3	10.9#



#14
 Acetophenone
 Concen: 21.29 ng/ul
 RT: 9.33 min Scan# 926
 Delta R.T. -0.01 min
 Lab File: BG027555.D
 Acq: 20 Jun 2017 16:07

Tgt Ion	Resp	Lower	Upper
105	74054		
77	86.2	76.0	114.0
51	31.6	34.8	52.2#

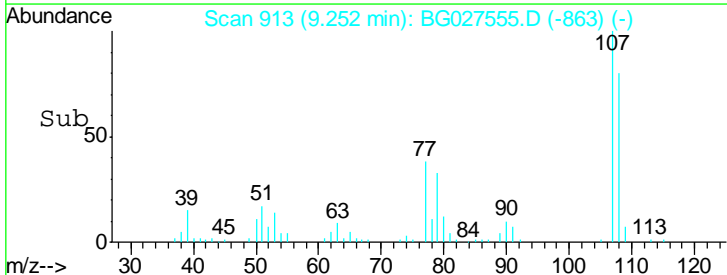
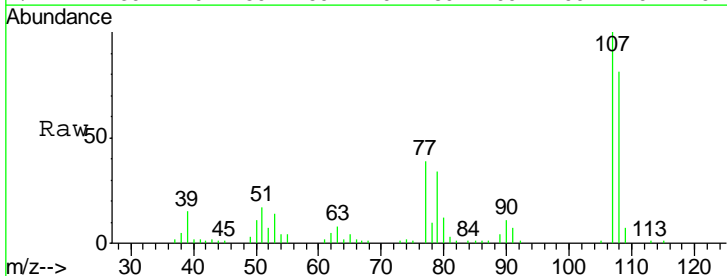
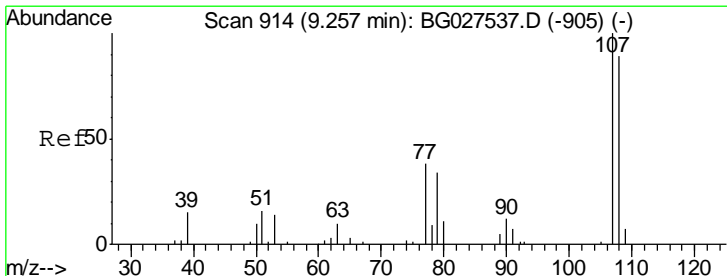
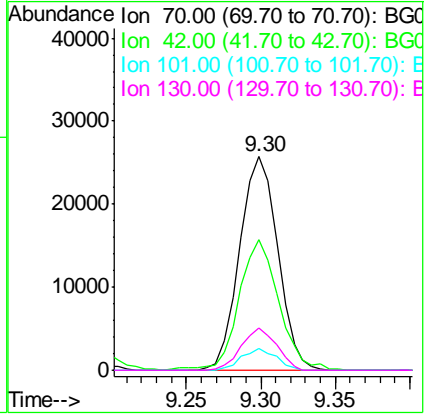




#15
 N-Nitroso-di-n-propylamine
 Concen: 23.14 ng/ul
 RT: 9.30 min Scan# 921
 Delta R.T. -0.01 min
 Lab File: BG027555.D
 Acq: 20 Jun 2017 16:07

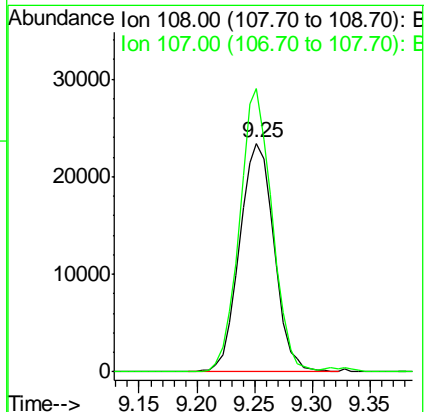
Instrument :
 BNA_G
ClientSampled :
 SSTD02092

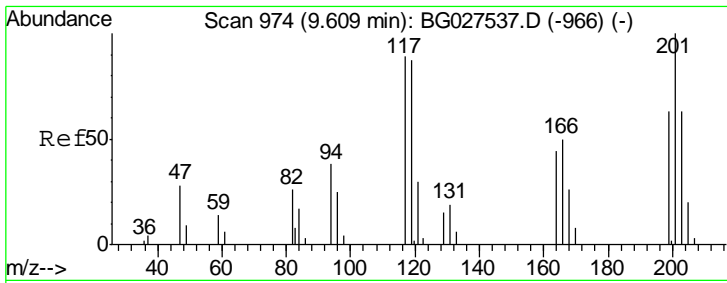
Tgt Ion	Resp	Lower	Upper
70	100		
42	60.9	59.0	88.6
101	10.0	6.6	9.8#
130	19.5	15.6	23.4



#16
 4-Methylphenol
 Concen: 20.31 ng/ul
 RT: 9.25 min Scan# 913
 Delta R.T. -0.01 min
 Lab File: BG027555.D
 Acq: 20 Jun 2017 16:07

Tgt Ion	Resp	Lower	Upper
108	100		
107	123.7	91.7	137.5

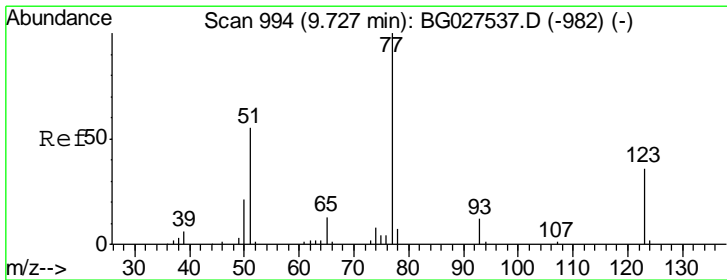
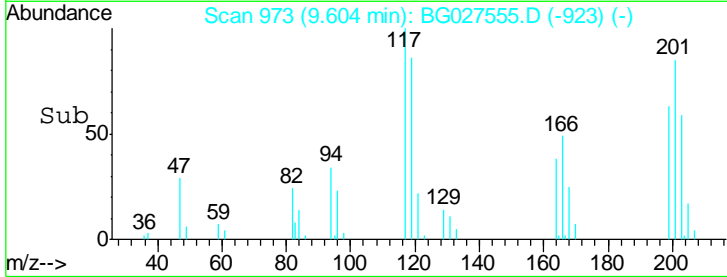
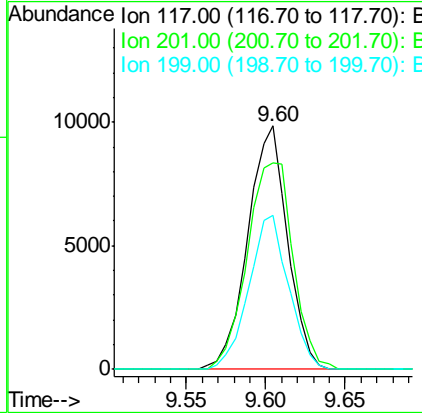
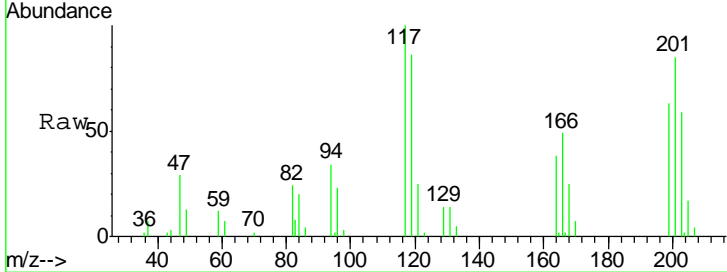




#17
 Hexachloroethane
 Concen: 23.36 ng/ul
 RT: 9.60 min Scan# 973
 Delta R.T. -0.01 min
 Lab File: BG027555.D
 Acq: 20 Jun 2017 16:07

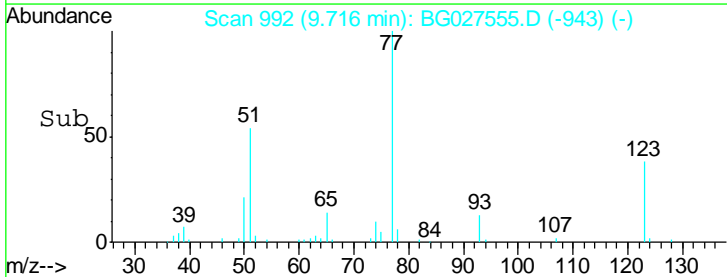
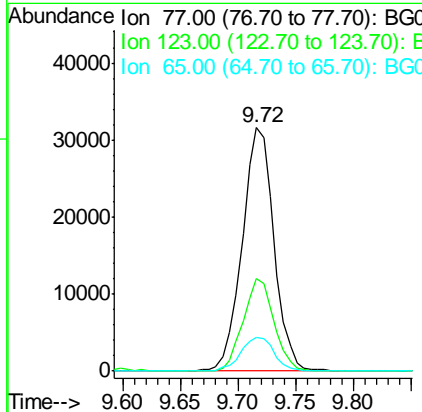
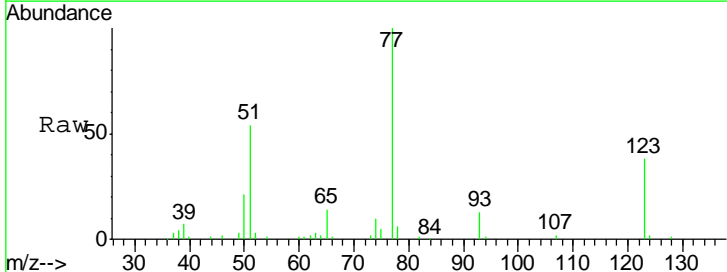
Instrument :
 BNA_G
ClientSampled :
 SSTD02092

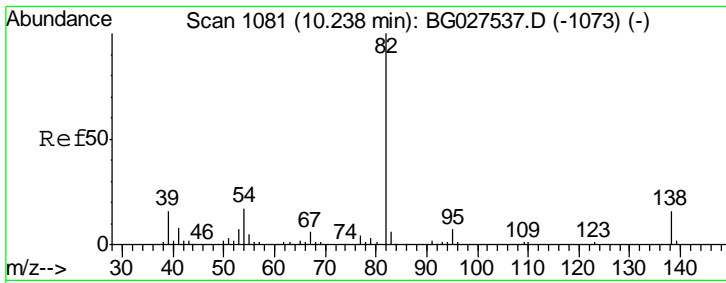
Tgt Ion	Resp	Lower	Upper
117	17143		
201	85.1	91.9	137.9#
199	63.4	64.3	96.5#



#20
 Nitrobenzene
 Concen: 21.47 ng/ul
 RT: 9.72 min Scan# 992
 Delta R.T. -0.01 min
 Lab File: BG027555.D
 Acq: 20 Jun 2017 16:07

Tgt Ion	Resp	Lower	Upper
77	60313		
123	38.2	27.4	41.0
65	13.8	13.3	19.9

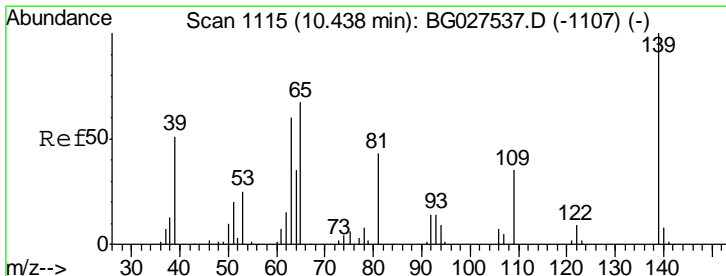
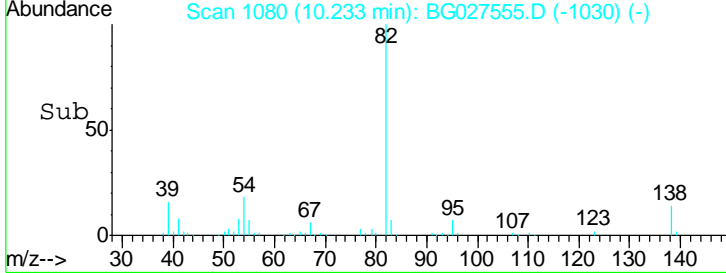
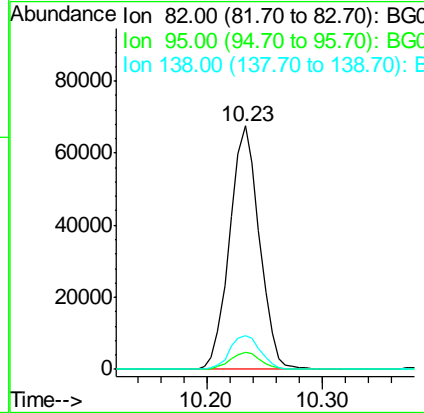
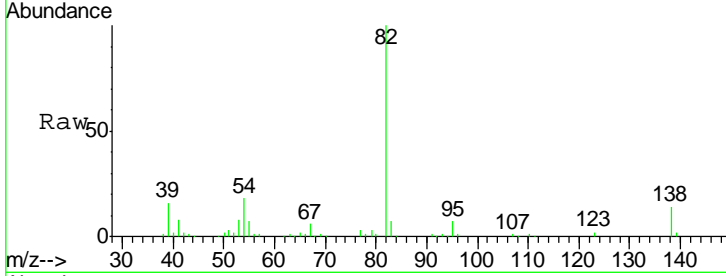




#21
 Isophorone
 Concen: 21.72 ng/ul
 RT: 10.23 min Scan# 1080
 Delta R.T. -0.01 min
 Lab File: BG027555.D
 Acq: 20 Jun 2017 16:07

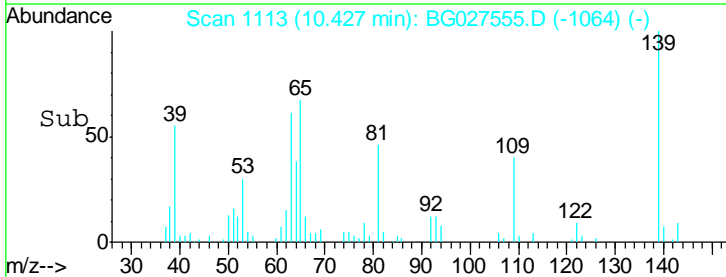
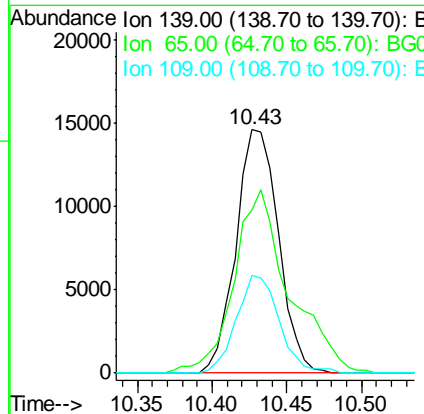
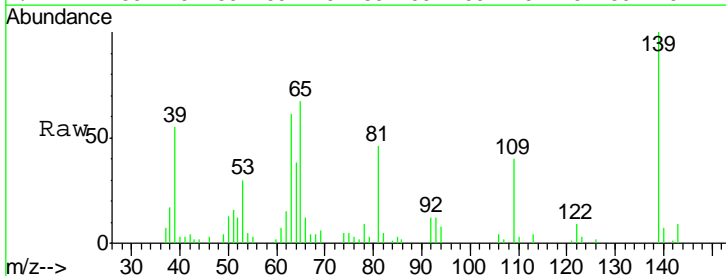
Instrument :
 BNA_G
 ClientSampled :
 SSTD02092

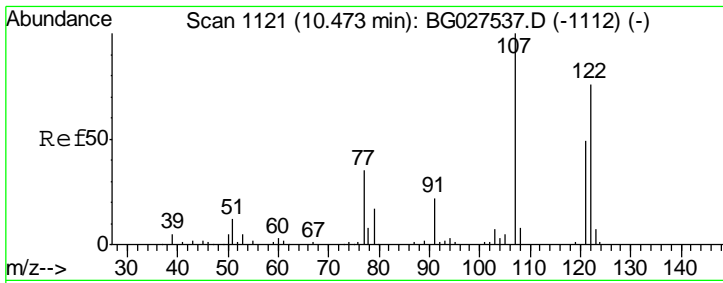
Tgt Ion	Resp	Lower	Upper
82	120333		
95	6.8	7.8	11.6#
138	14.0	12.2	18.2



#23
 2-Nitrophenol
 Concen: 24.78 ng/ul
 RT: 10.43 min Scan# 1113
 Delta R.T. -0.01 min
 Lab File: BG027555.D
 Acq: 20 Jun 2017 16:07

Tgt Ion	Resp	Lower	Upper
139	28828		
65	67.0	67.0	100.6
109	40.3	39.6	59.4

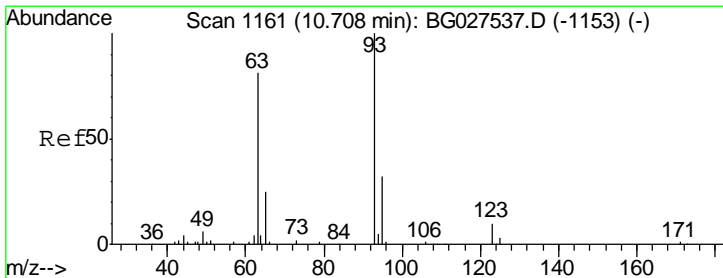
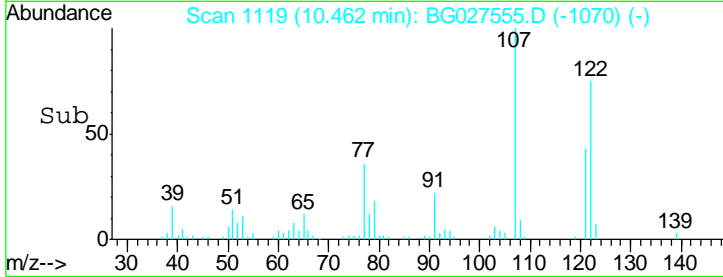
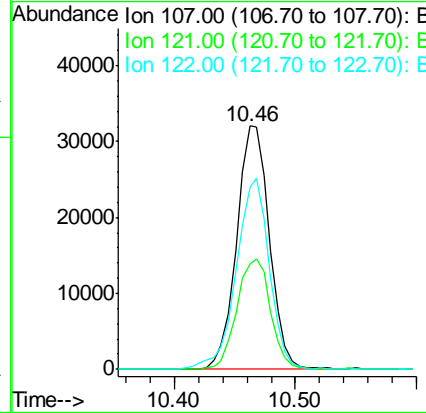
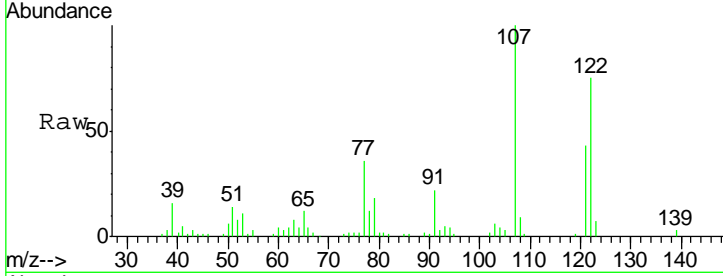




#24
 2,4-Dimethylphenol
 Concen: 21.86 ng/ul
 RT: 10.46 min Scan# 1119
 Delta R.T. -0.01 min
 Lab File: BG027555.D
 Acq: 20 Jun 2017 16:07

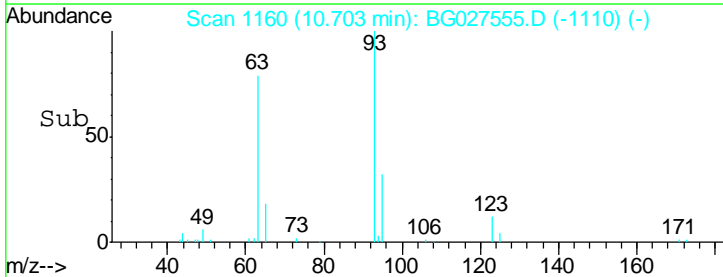
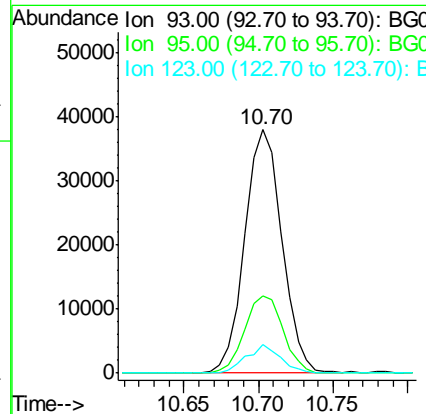
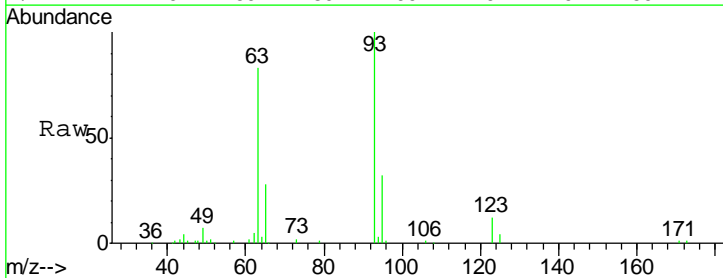
Instrument :
 BNA_G
 ClientSampled :
 SSTD02092

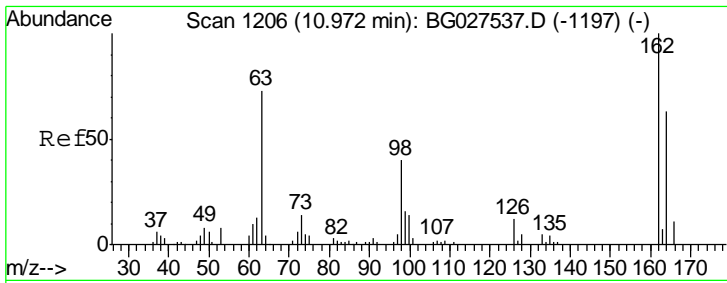
Tgt Ion	Resp	Lower	Upper
107	60591		
107	100		
121	43.5	32.3	48.5
122	74.7	61.2	91.8



#25
 Bis(2-Chloroethoxy)methane
 Concen: 19.21 ng/ul
 RT: 10.70 min Scan# 1160
 Delta R.T. -0.01 min
 Lab File: BG027555.D
 Acq: 20 Jun 2017 16:07

Tgt Ion	Resp	Lower	Upper
93	65479		
93	100		
95	31.7	23.4	35.0
123	11.9	7.8	11.6#

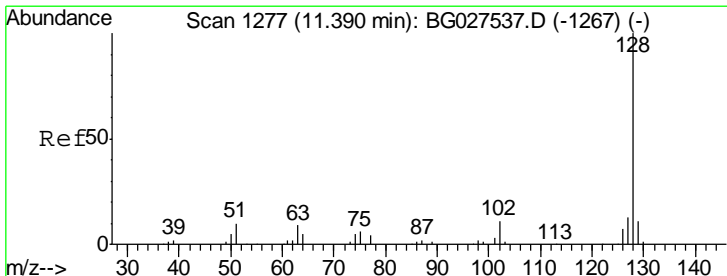
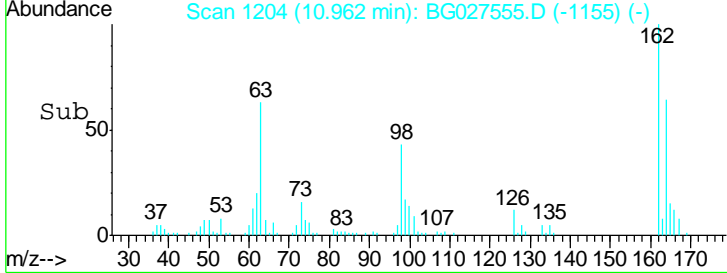
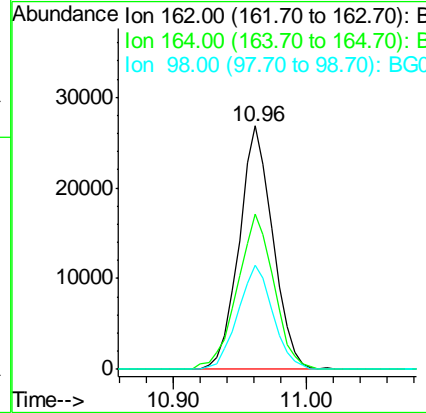
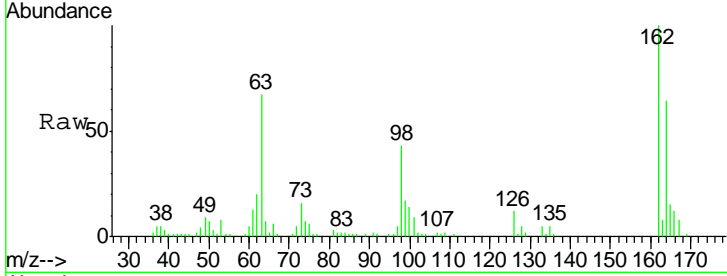




#27
 2,4-Dichlorophenol
 Concen: 23.13 ng/ul
 RT: 10.96 min Scan# 1204
 Delta R.T. -0.01 min
 Lab File: BG027555.D
 Acq: 20 Jun 2017 16:07

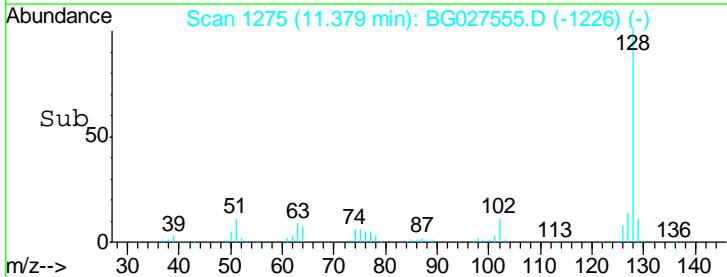
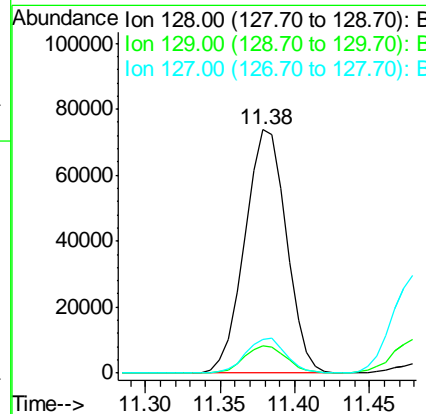
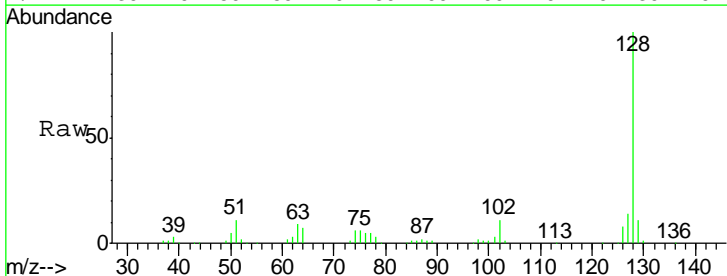
Instrument :
 BNA_G
 ClientSampled :
 SSTD02092

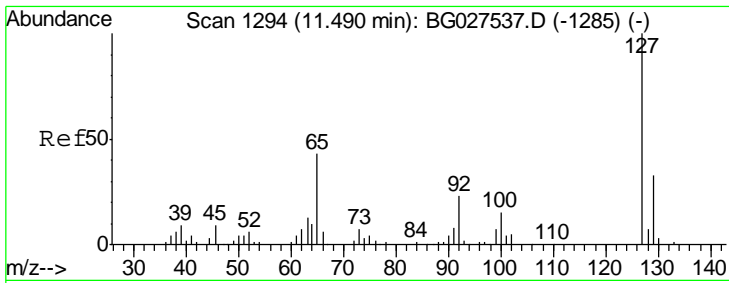
Tgt Ion	Resp	Lower	Upper
162	46805		
164	100	50.8	76.2
98	42.5	32.1	48.1



#28
 Naphthalene
 Concen: 20.16 ng/ul
 RT: 11.38 min Scan# 1275
 Delta R.T. -0.01 min
 Lab File: BG027555.D
 Acq: 20 Jun 2017 16:07

Tgt Ion	Resp	Lower	Upper
128	142212		
129	100	9.4	14.2
127	13.8	10.3	15.5

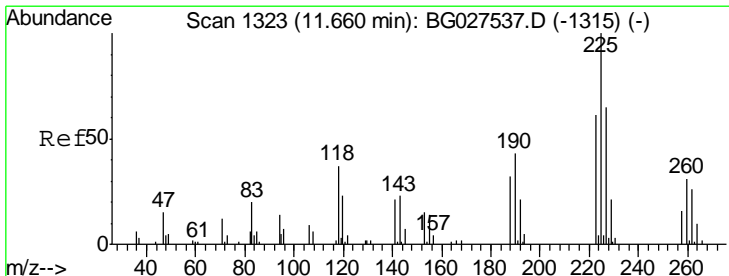
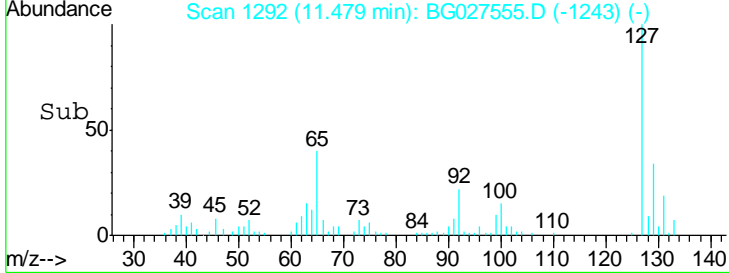
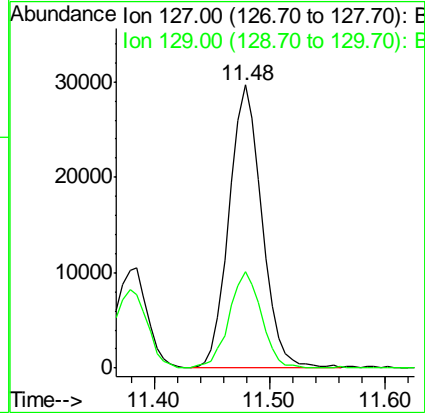
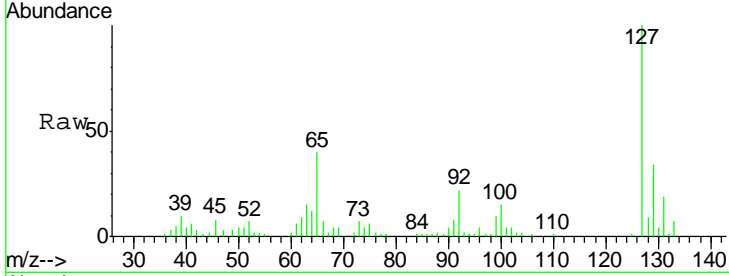




#30
 4-Chloroaniline
 Concen: 23.36 ng/ul
 RT: 11.48 min Scan# 1292
 Delta R.T. -0.01 min
 Lab File: BG027555.D
 Acq: 20 Jun 2017 16:07

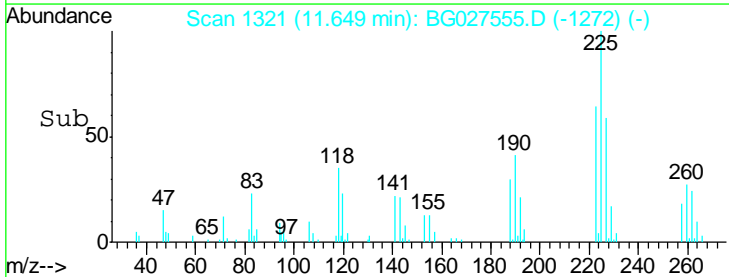
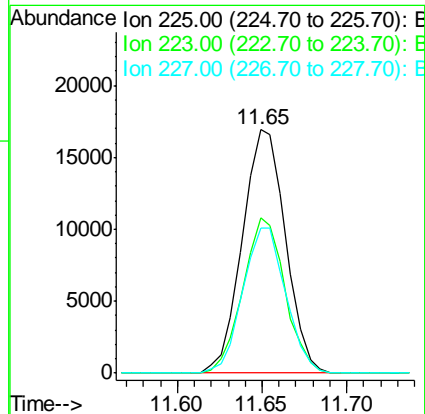
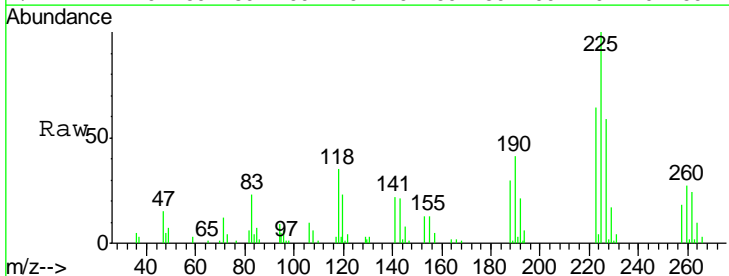
Instrument :
 BNA_G
 ClientSampled :
 SST02092

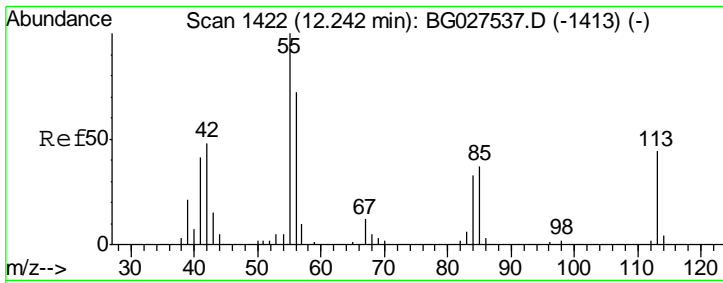
Tgt Ion:127 Resp: 58424
 Ion Ratio Lower Upper
 127 100
 129 33.9 28.9 43.3



#31
 Hexachlorobutadiene
 Concen: 24.07 ng/ul
 RT: 11.65 min Scan# 1321
 Delta R.T. -0.01 min
 Lab File: BG027555.D
 Acq: 20 Jun 2017 16:07

Tgt Ion:225 Resp: 29961
 Ion Ratio Lower Upper
 225 100
 223 63.8 45.9 68.9
 227 61.6 44.7 67.1

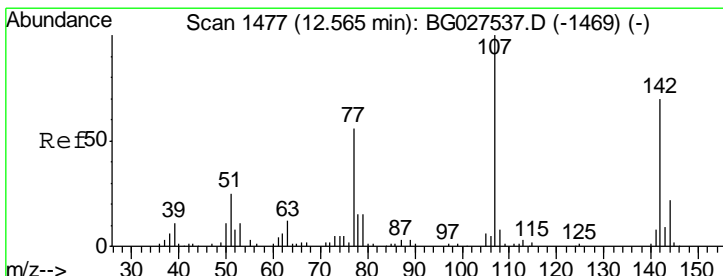
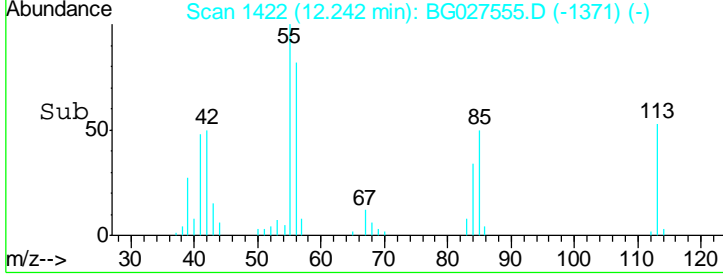
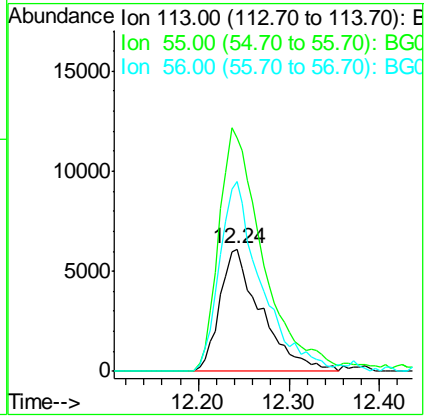
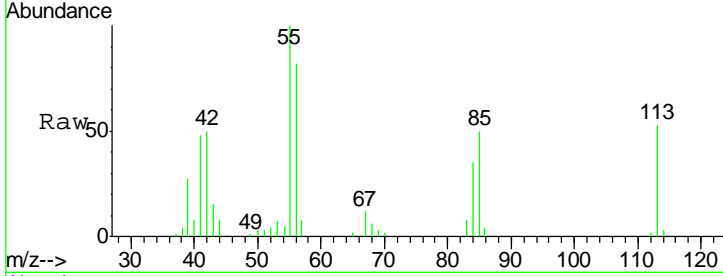




#32
 Caprolactam
 Concen: 21.71 ng/ul
 RT: 12.24 min Scan# 1422
 Delta R.T. 0.00 min
 Lab File: BG027555.D
 Acq: 20 Jun 2017 16:07

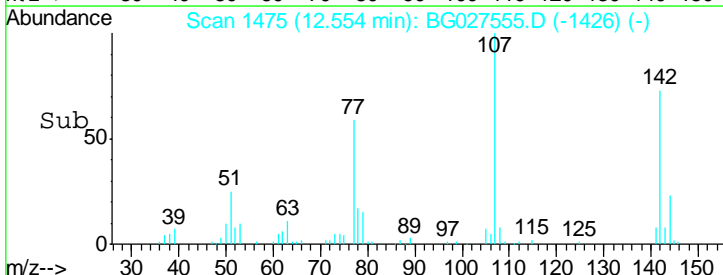
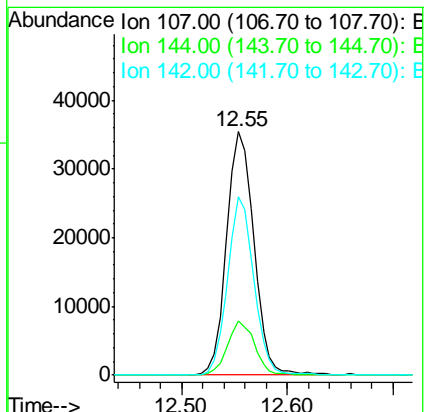
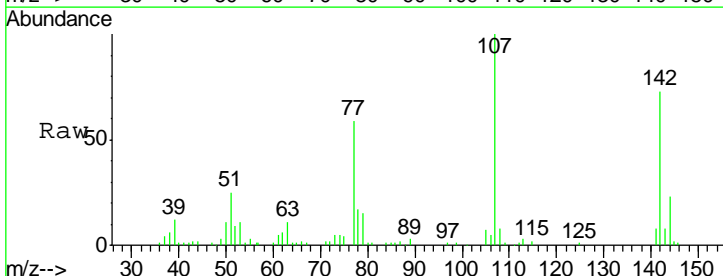
Instrument :
 BNA_G
 ClientSampled :
 SSTD02092

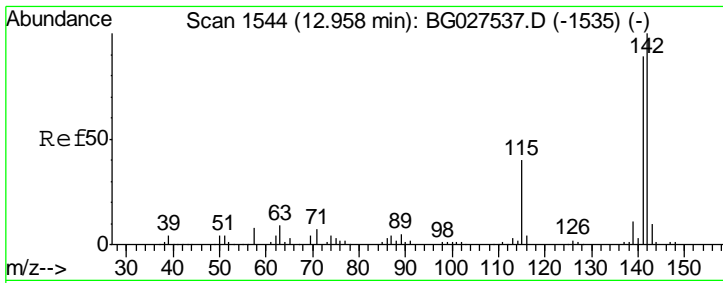
Tgt Ion	Resp	Lower	Upper
113	100		
55	190.3	168.6	252.8
56	155.3	128.5	192.7



#33
 4-Chloro-3-methylphenol
 Concen: 23.84 ng/ul
 RT: 12.55 min Scan# 1475
 Delta R.T. -0.01 min
 Lab File: BG027555.D
 Acq: 20 Jun 2017 16:07

Tgt Ion	Resp	Lower	Upper
107	100		
144	22.5	18.2	27.4
142	73.1	55.0	82.4

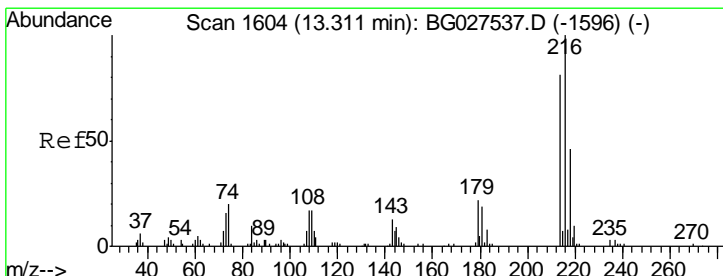
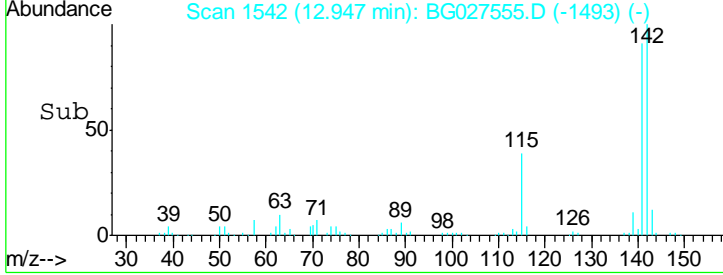
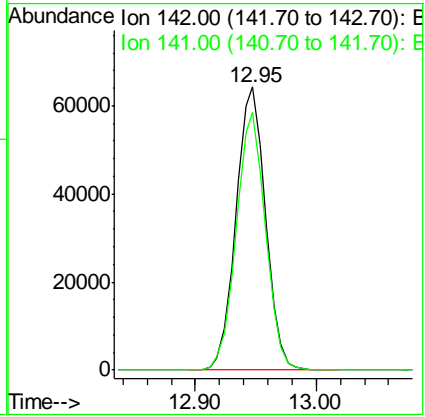
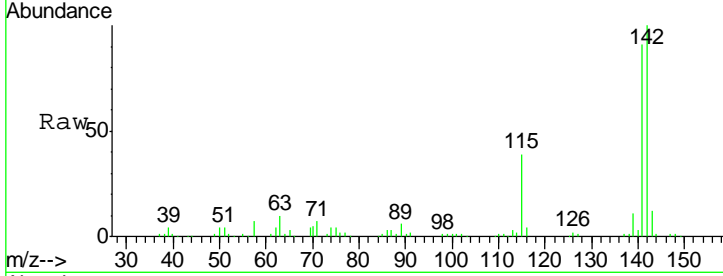




#34
 2-Methylnaphthalene
 Concen: 20.96 ng/ul
 RT: 12.95 min Scan# 1542
 Delta R.T. -0.01 min
 Lab File: BG027555.D
 Acq: 20 Jun 2017 16:07

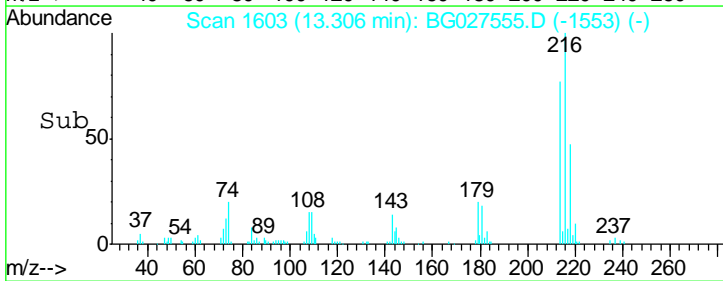
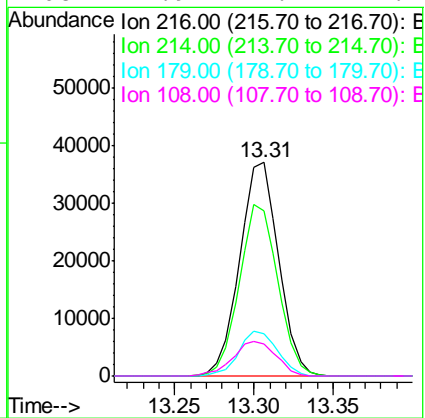
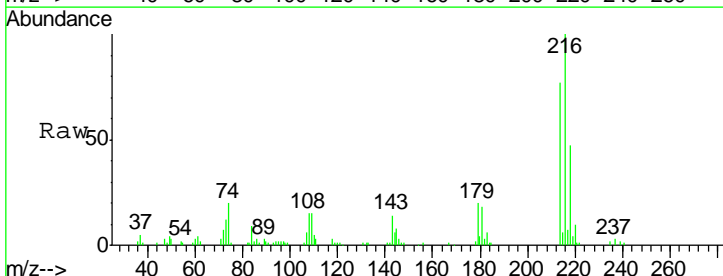
Instrument :
 BNA_G
 ClientSampled :
 SST02092

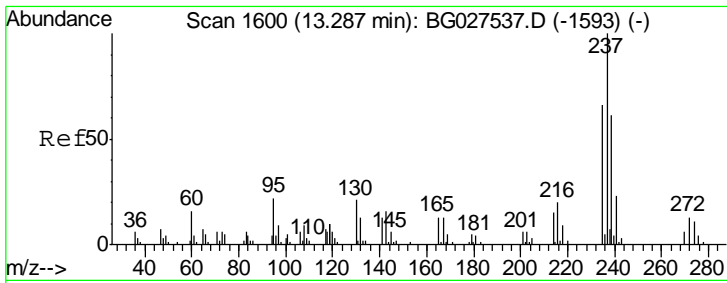
Tgt Ion:142 Resp: 109645
 Ion Ratio Lower Upper
 142 100
 141 91.3 68.6 102.8



#36
 1,2,4,5-Tetrachlorobenzene
 Concen: 22.54 ng/ul
 RT: 13.31 min Scan# 1603
 Delta R.T. -0.01 min
 Lab File: BG027555.D
 Acq: 20 Jun 2017 16:07

Tgt Ion:216 Resp: 63315
 Ion Ratio Lower Upper
 216 100
 214 77.1 67.0 100.6
 179 19.7 18.1 27.1
 108 14.9 14.1 21.1

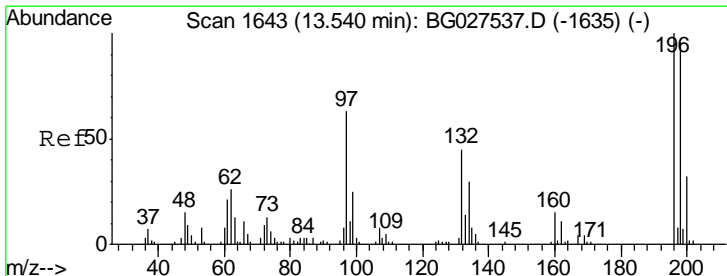
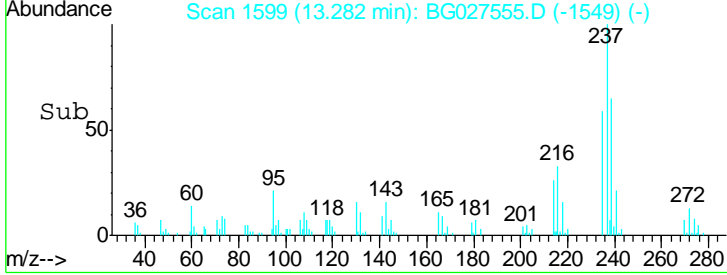
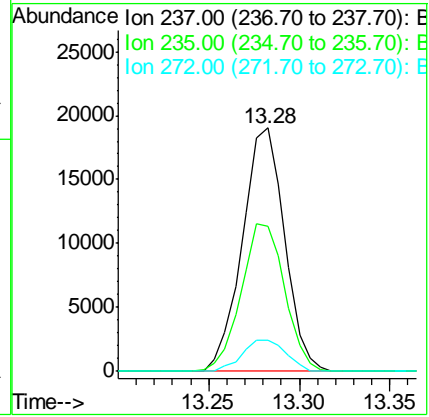
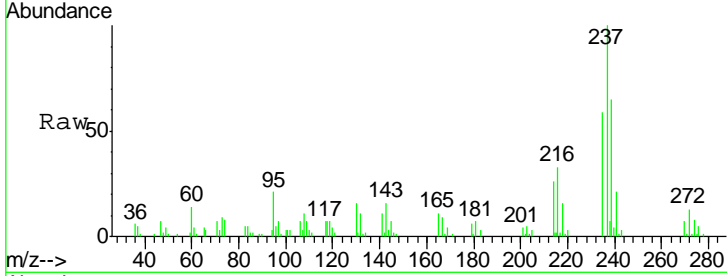




#37
 Hexachlorocyclopentadiene
 Concen: 19.60 ng/ul
 RT: 13.28 min Scan# 1599
 Delta R.T. -0.01 min
 Lab File: BG027555.D
 Acq: 20 Jun 2017 16:07

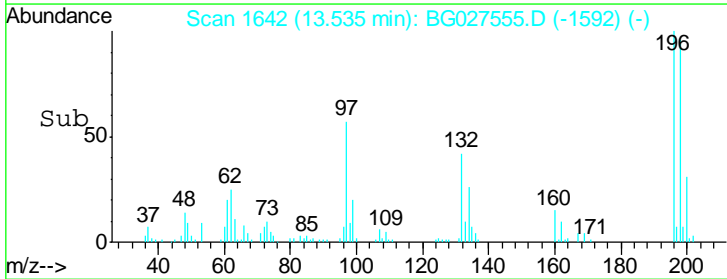
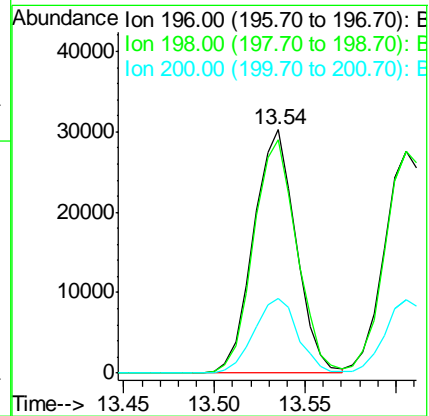
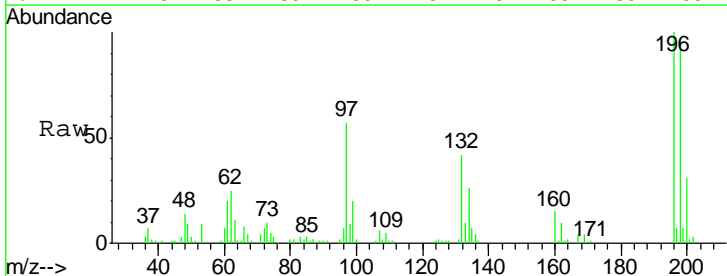
Instrument :
 BNA_G
 ClientSampled :
 SSTD02092

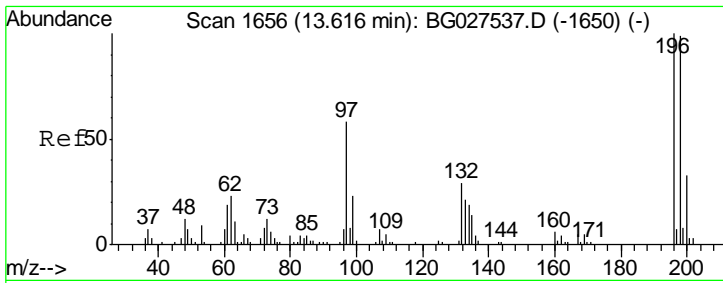
Tgt Ion	Resp	Lower	Upper
237	100		
235	59.3	50.2	75.4
272	12.7	10.6	16.0



#38
 2,4,6-Trichlorophenol
 Concen: 26.40 ng/ul
 RT: 13.54 min Scan# 1642
 Delta R.T. -0.01 min
 Lab File: BG027555.D
 Acq: 20 Jun 2017 16:07

Tgt Ion	Resp	Lower	Upper
196	100		
198	95.8	71.4	107.2
200	30.6	24.6	37.0

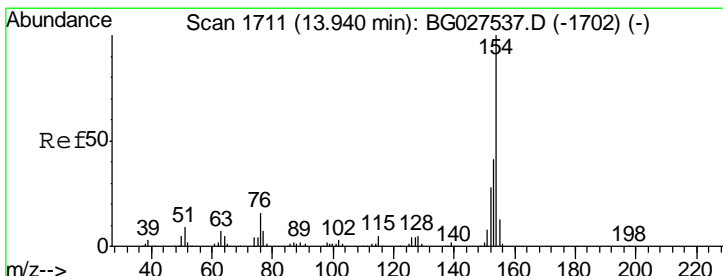
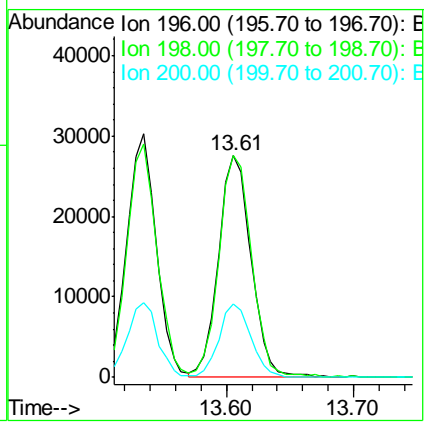
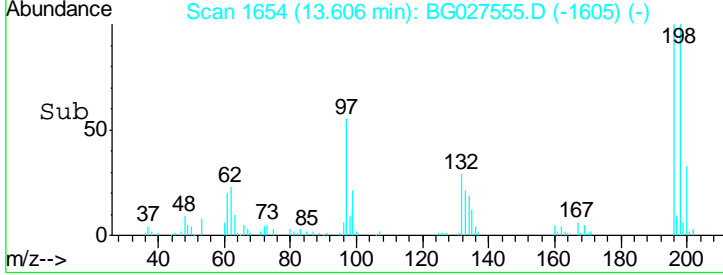
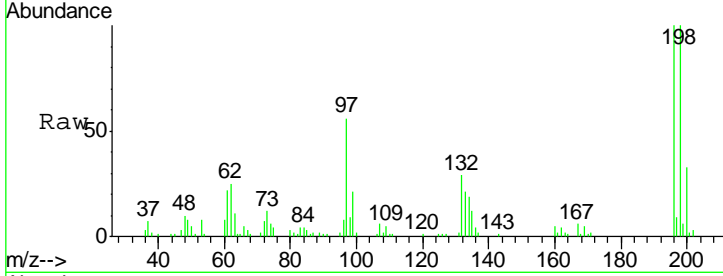




#39
 2,4,5-Trichlorophenol
 Concen: 25.44 ng/ul
 RT: 13.61 min Scan# 1654
 Delta R.T. -0.01 min
 Lab File: BG027555.D
 Acq: 20 Jun 2017 16:07

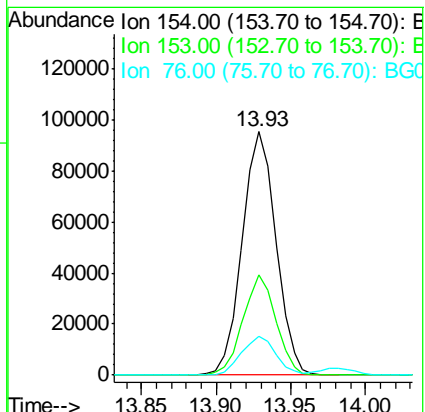
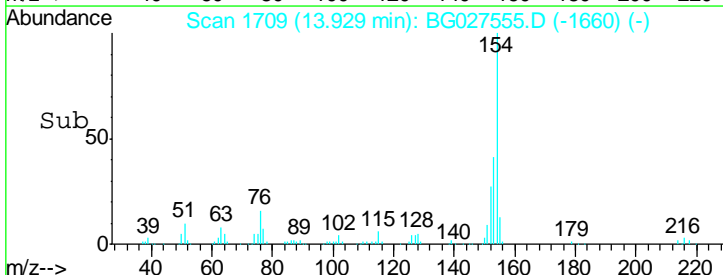
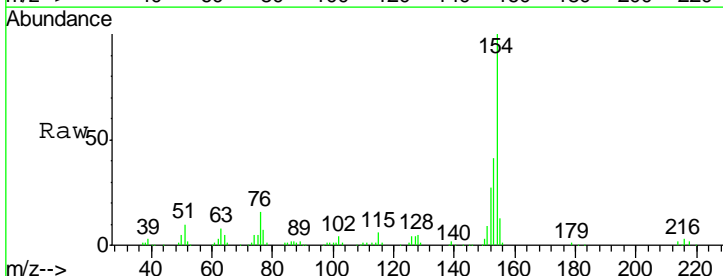
Instrument :
 BNA_G
 ClientSampled :
 SST02092

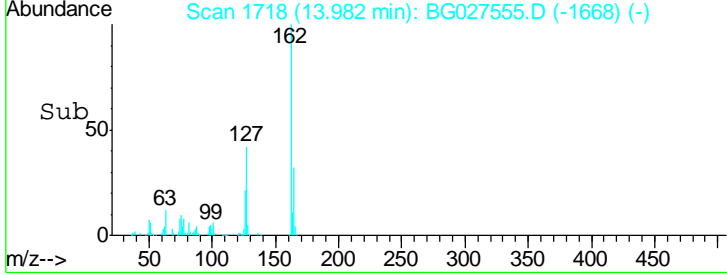
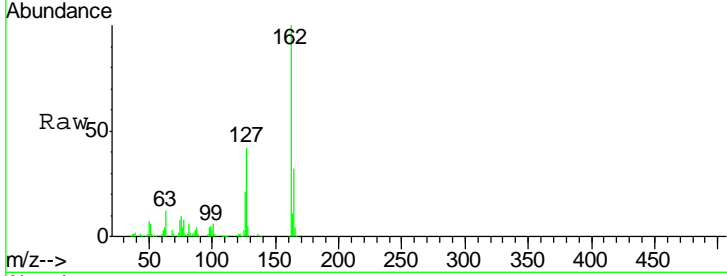
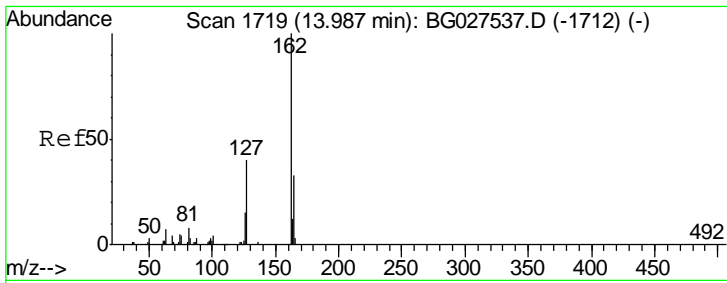
Tgt Ion	Resp	Lower	Upper
196	49244		
196	100		
198	100.0	78.6	118.0
200	33.3	27.3	40.9



#40
 1,1'-Biphenyl
 Concen: 19.94 ng/ul
 RT: 13.93 min Scan# 1709
 Delta R.T. -0.01 min
 Lab File: BG027555.D
 Acq: 20 Jun 2017 16:07

Tgt Ion	Resp	Lower	Upper
154	149707		
154	100		
153	41.0	32.2	48.2
76	16.0	9.6	14.4#

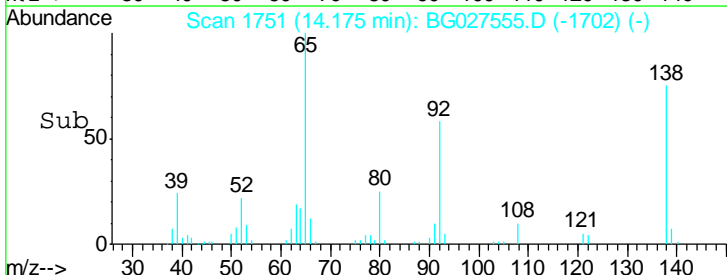
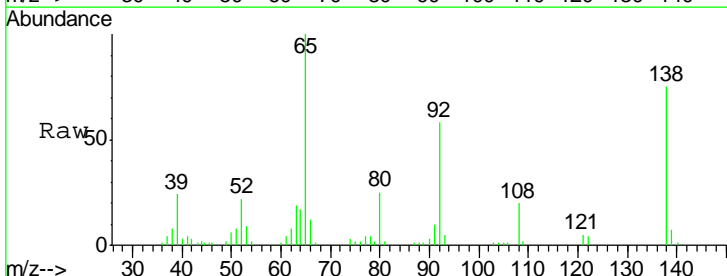
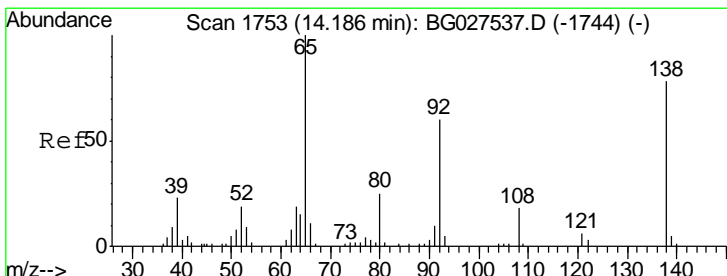
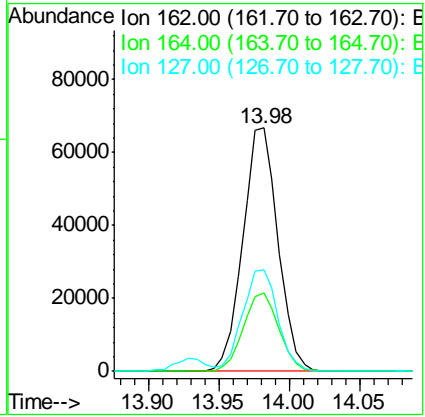




#41
 2-Chloronaphthalene
 Concen: 20.48 ng/ul
 RT: 13.98 min Scan# 1718
 Delta R.T. -0.01 min
 Lab File: BG027555.D
 Acq: 20 Jun 2017 16:07

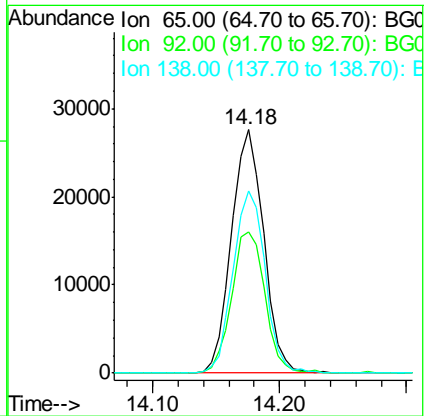
Instrument :
 BNA_G
 ClientSampled :
 SSTD02092

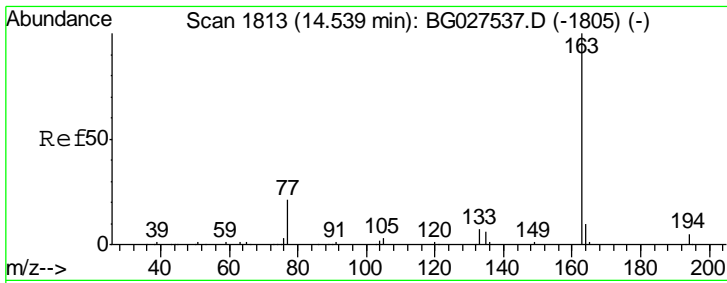
Tgt Ion	Resp	Lower	Upper
162	115967		
164	32.3	25.0	37.6
127	41.5	30.7	46.1



#42
 2-Nitroaniline
 Concen: 22.80 ng/ul
 RT: 14.18 min Scan# 1751
 Delta R.T. -0.01 min
 Lab File: BG027555.D
 Acq: 20 Jun 2017 16:07

Tgt Ion	Resp	Lower	Upper
65	48570		
92	57.9	50.9	76.3
138	74.7	61.8	92.6

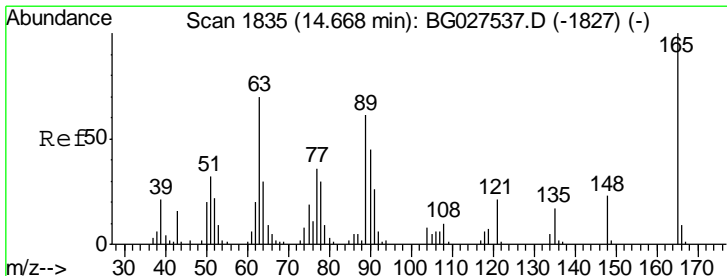
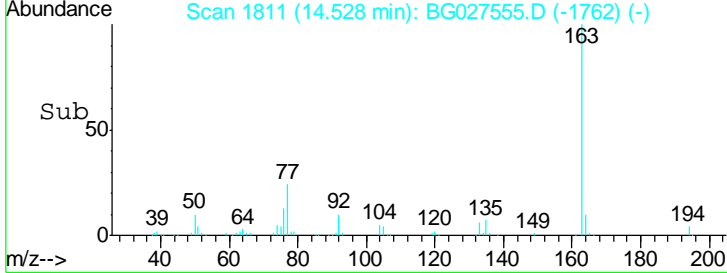
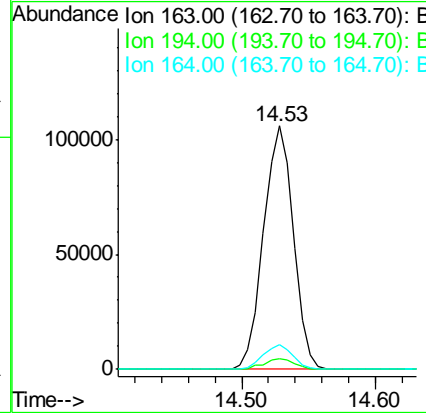
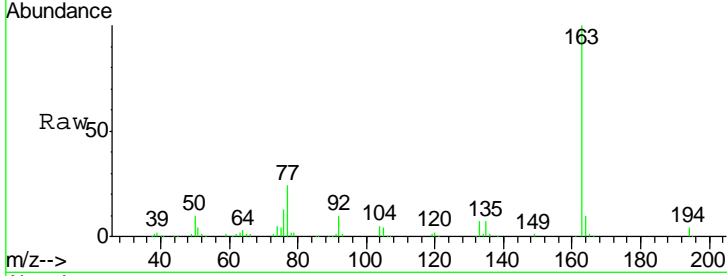




#44
 Dimethylphthalate
 Concen: 20.67 ng/ul
 RT: 14.53 min Scan# 1811
 Delta R.T. -0.01 min
 Lab File: BG027555.D
 Acq: 20 Jun 2017 16:07

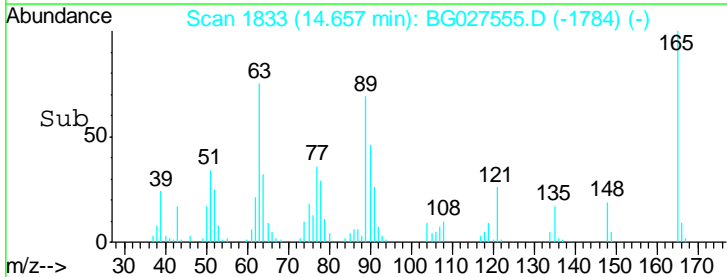
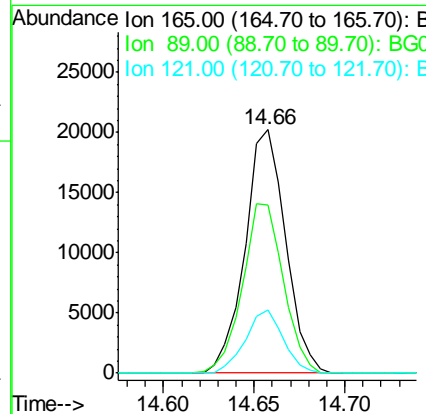
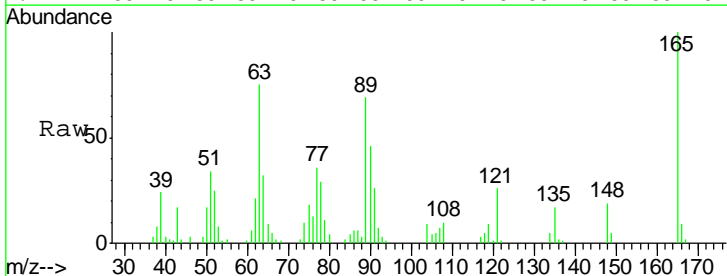
Instrument :
 BNA_G
 ClientSampled :
 SST02092

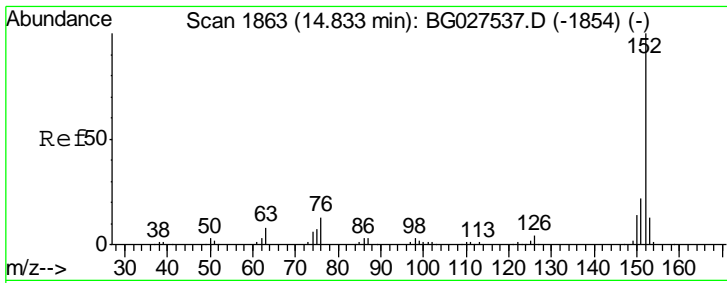
Tgt Ion	Resp	Lower	Upper
163	162923		
194	4.4	3.4	5.0
164	10.3	9.0	13.4



#45
 2,6-Dinitrotoluene
 Concen: 21.43 ng/ul
 RT: 14.66 min Scan# 1833
 Delta R.T. -0.01 min
 Lab File: BG027555.D
 Acq: 20 Jun 2017 16:07

Tgt Ion	Resp	Lower	Upper
165	31445		
89	69.1	52.9	79.3
121	25.9	22.2	33.4

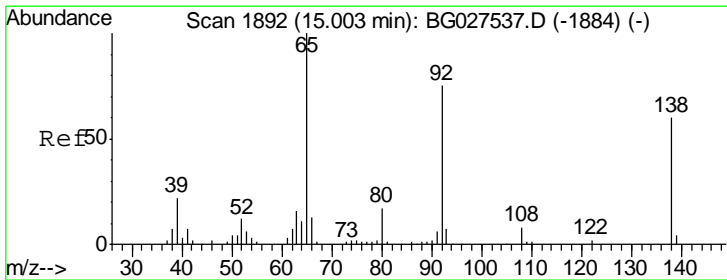
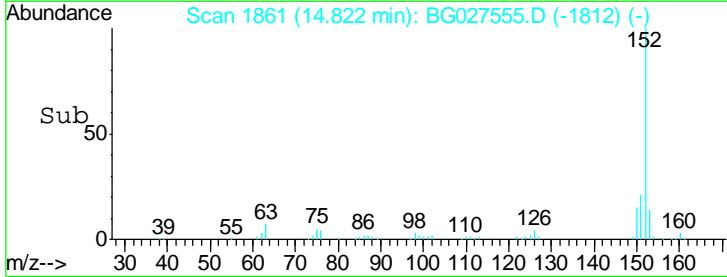
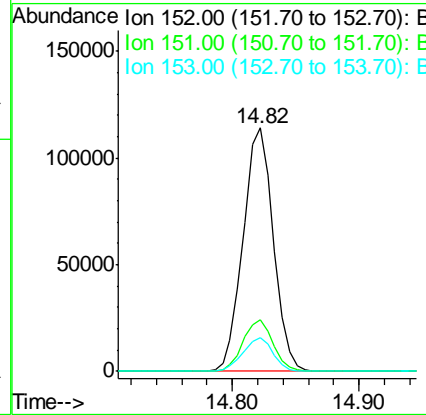
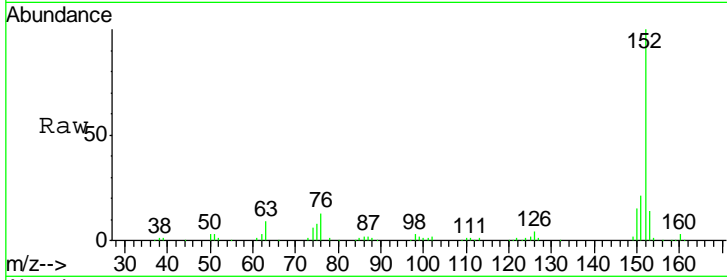




#47
 Acenaphthylene
 Concen: 20.57 ng/ul
 RT: 14.82 min Scan# 1861
 Delta R.T. -0.01 min
 Lab File: BG027555.D
 Acq: 20 Jun 2017 16:07

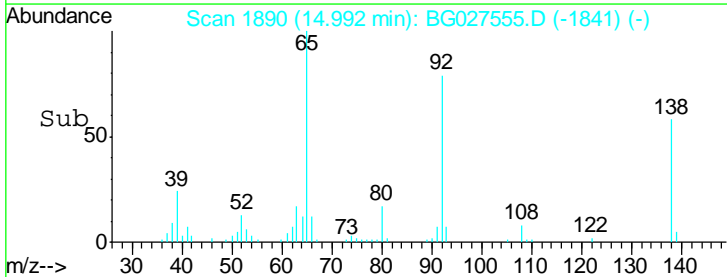
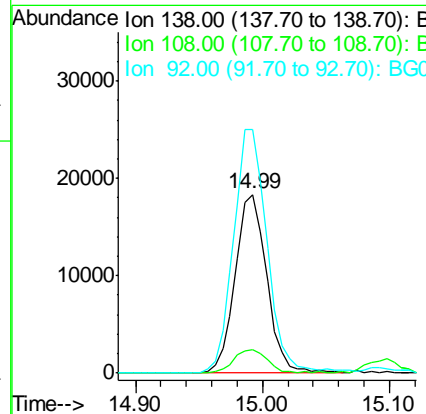
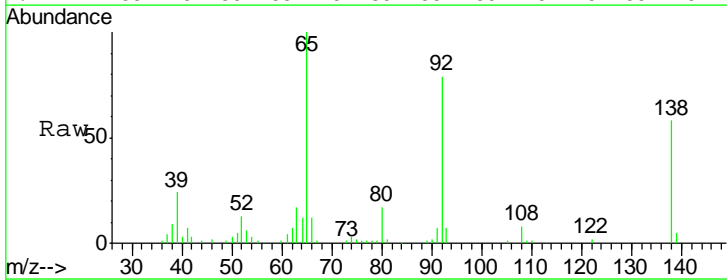
Instrument :
 BNA_G
 ClientSampleId :
 SSTD02092

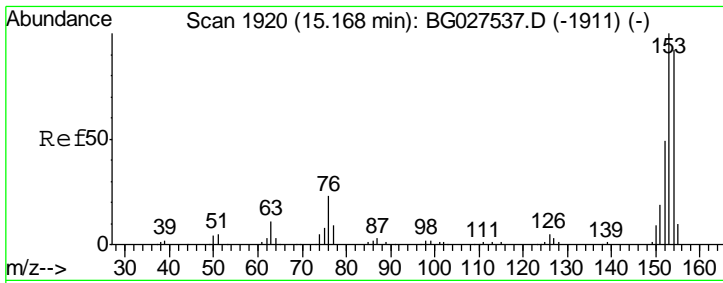
Tgt Ion	Resp	Lower	Upper
152	188642		
151	21.0	16.7	25.1
153	14.0	11.4	17.2



#48
 3-Nitroaniline
 Concen: 19.90 ng/ul
 RT: 14.99 min Scan# 1890
 Delta R.T. -0.01 min
 Lab File: BG027555.D
 Acq: 20 Jun 2017 16:07

Tgt Ion	Resp	Lower	Upper
138	31693		
108	13.2	6.3	9.5#
92	136.1	106.4	159.6

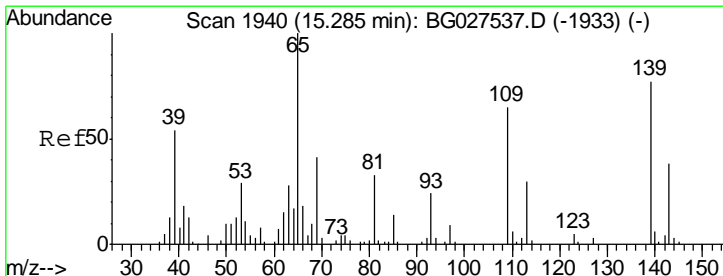
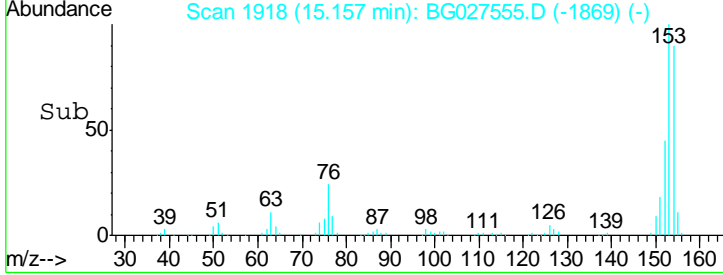
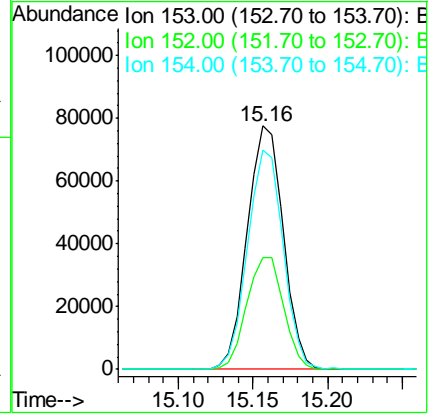
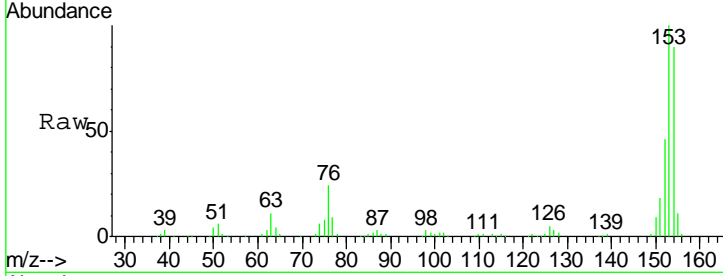




#49
 Acenaphthene
 Concen: 20.22 ng/ul
 RT: 15.16 min Scan# 1918
 Delta R.T. -0.01 min
 Lab File: BG027555.D
 Acq: 20 Jun 2017 16:07

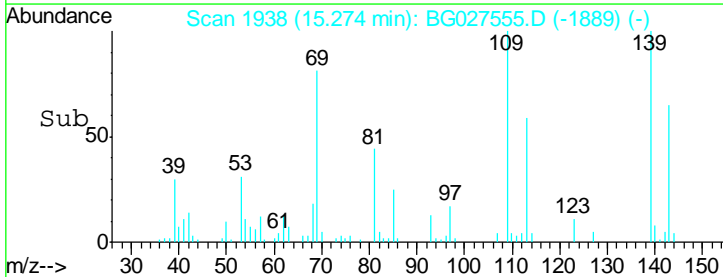
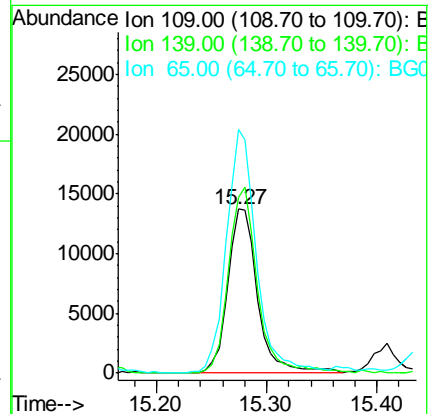
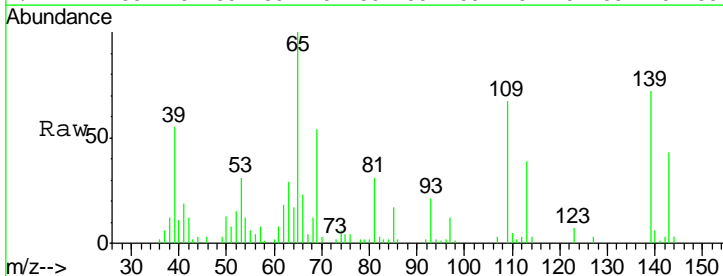
Instrument :
 BNA_G
 ClientSampled :
 SSTD02092

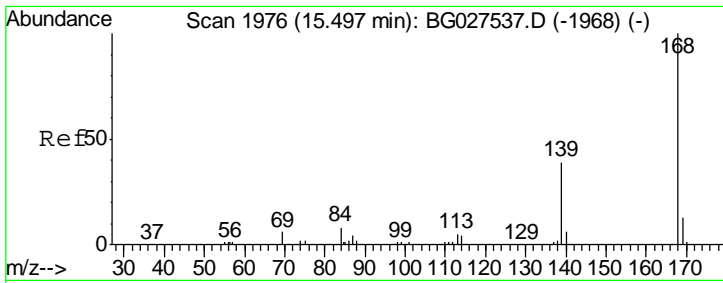
Tgt Ion	Resp	Lower	Upper
153	129380		
152	45.7	36.5	54.7
154	90.3	72.3	108.5



#52
 4-Nitrophenol
 Concen: 21.07 ng/ul
 RT: 15.27 min Scan# 1938
 Delta R.T. -0.01 min
 Lab File: BG027555.D
 Acq: 20 Jun 2017 16:07

Tgt Ion	Resp	Lower	Upper
109	26050		
139	107.4	62.6	93.8#
65	148.3	90.4	135.6#

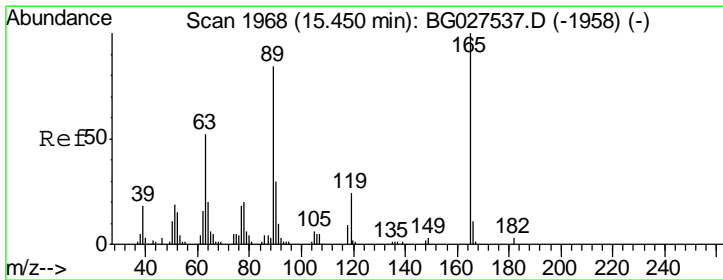
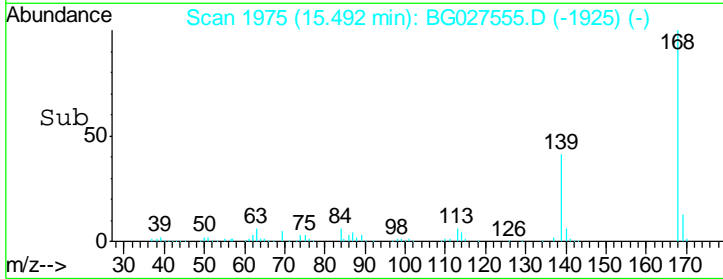
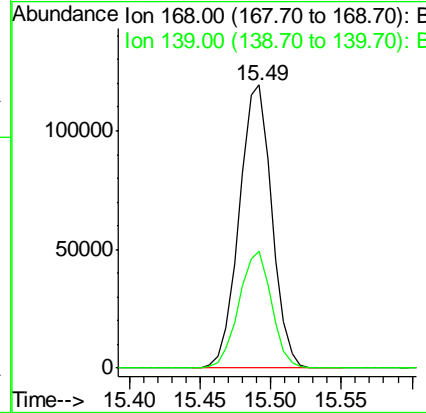
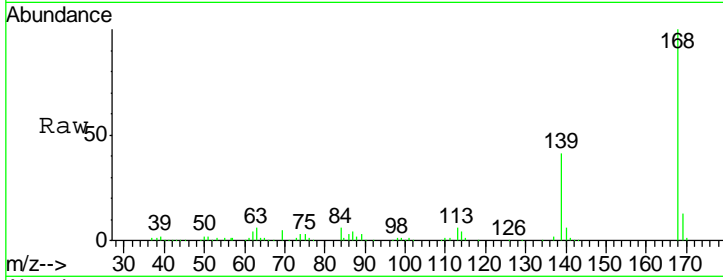




#53
 Dibenzofuran
 Concen: 20.61 ng/ul
 RT: 15.49 min Scan# 1975
 Delta R.T. -0.01 min
 Lab File: BG027555.D
 Acq: 20 Jun 2017 16:07

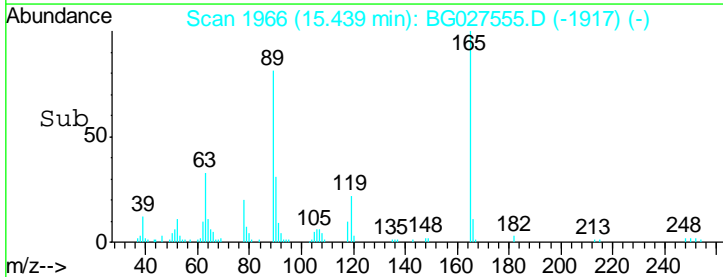
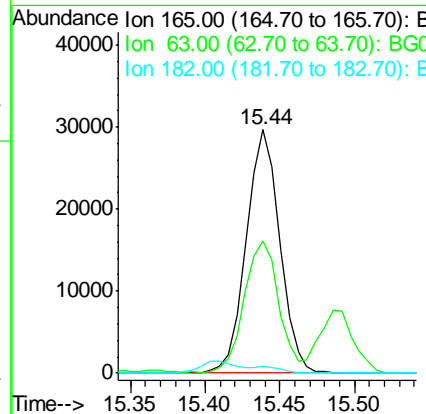
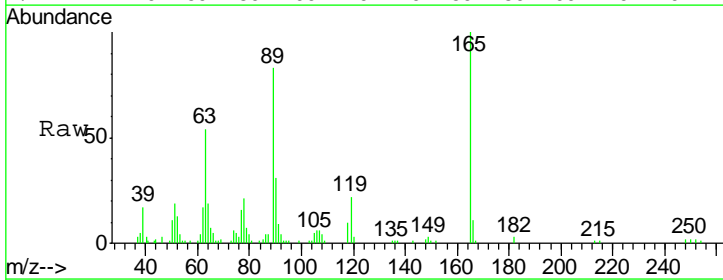
Instrument :
 BNA_G
 ClientSampled :
 SSTD02092

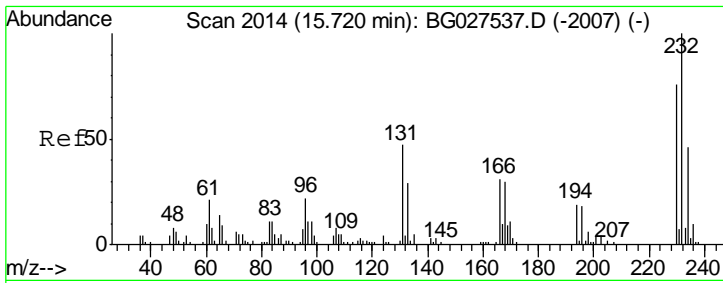
Tgt Ion	Resp	Lower	Upper
168	192157		
139	41.2	33.8	50.8



#54
 2,4-Dinitrotoluene
 Concen: 20.47 ng/ul
 RT: 15.44 min Scan# 1966
 Delta R.T. -0.01 min
 Lab File: BG027555.D
 Acq: 20 Jun 2017 16:07

Tgt Ion	Resp	Lower	Upper
165	45983		
63	54.2	46.8	70.2
182	2.9	1.8	2.6#

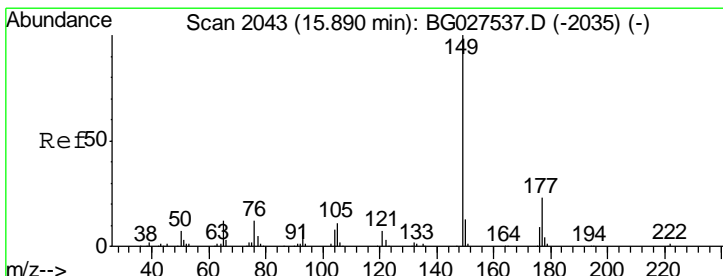
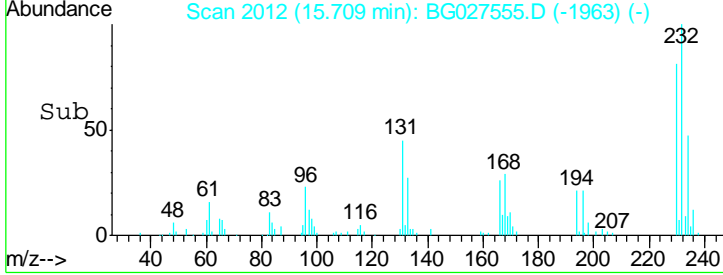
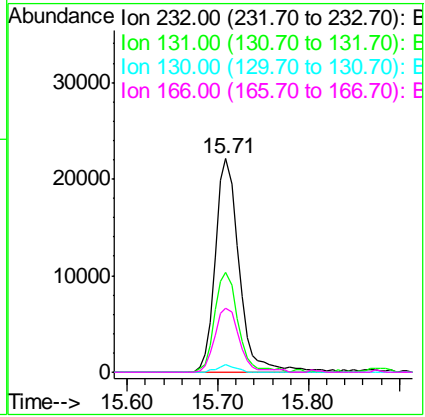
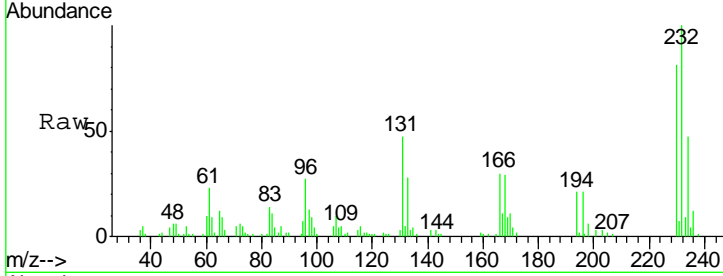




#55
 2,3,4,6-Tetrachlorophenol
 Concen: 21.47 ng/ul
 RT: 15.71 min Scan# 2012
 Delta R.T. -0.01 min
 Lab File: BG027555.D
 Acq: 20 Jun 2017 16:07

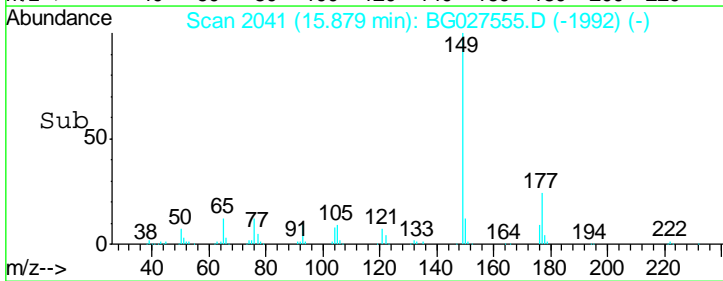
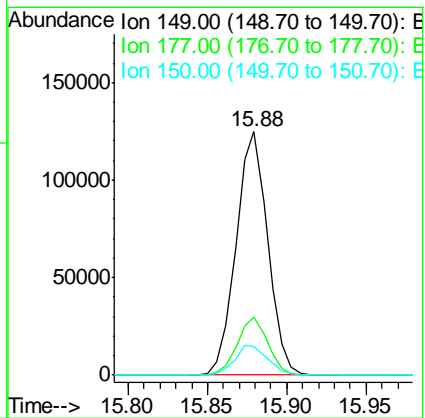
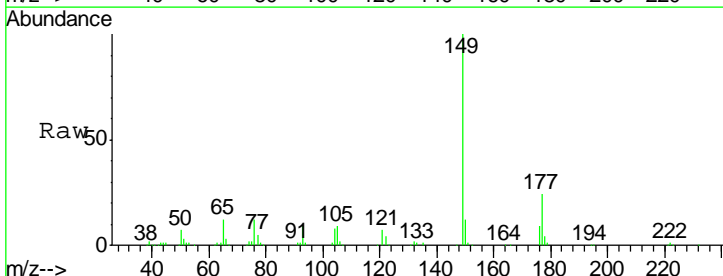
Instrument :
 BNA_G
 ClientSampleID :
 SST02092

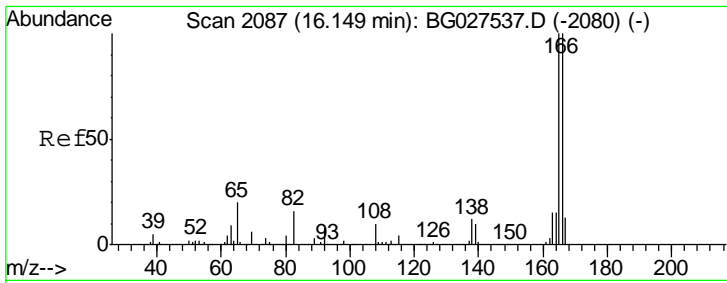
Tgt Ion	Resp	Lower	Upper
232	40430		
131	46.5	33.3	49.9
130	3.4	1.8	2.6#
166	29.9	21.9	32.9



#56
 Diethylphthalate
 Concen: 20.66 ng/ul
 RT: 15.88 min Scan# 2041
 Delta R.T. -0.01 min
 Lab File: BG027555.D
 Acq: 20 Jun 2017 16:07

Tgt Ion	Resp	Lower	Upper
149	172078		
177	23.7	17.8	26.8
150	11.8	10.2	15.4

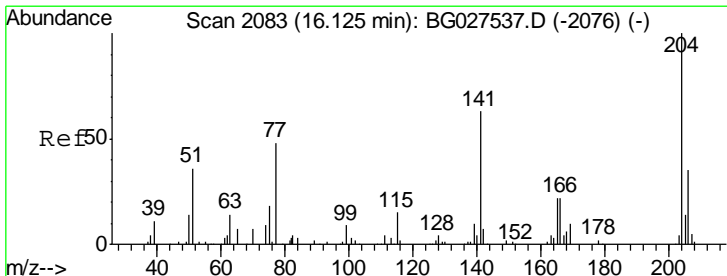
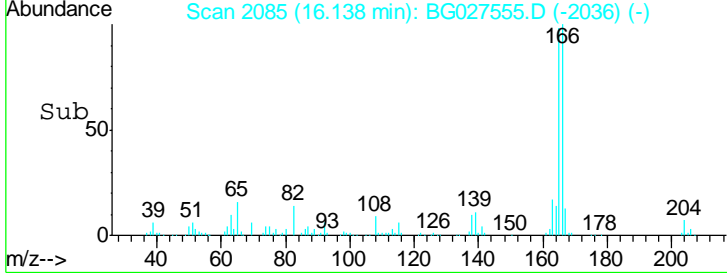
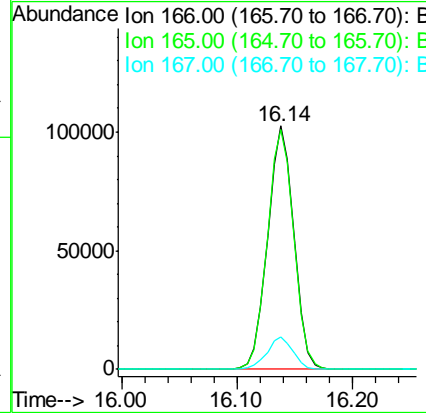
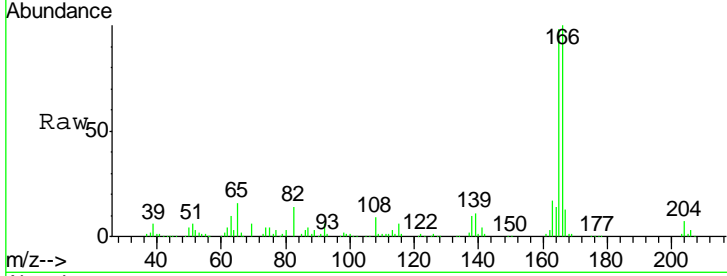




#58
 Fluorene
 Concen: 20.94 ng/ul
 RT: 16.14 min Scan# 2085
 Delta R.T. -0.01 min
 Lab File: BG027555.D
 Acq: 20 Jun 2017 16:07

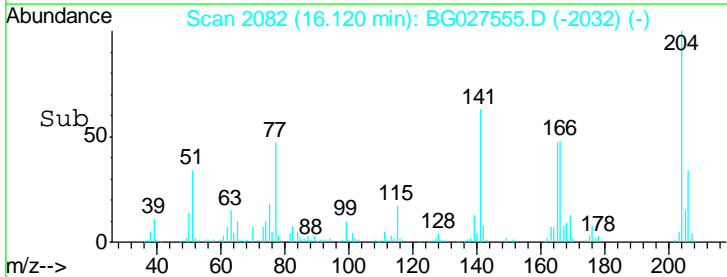
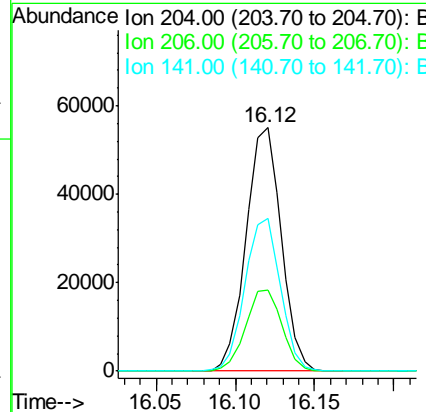
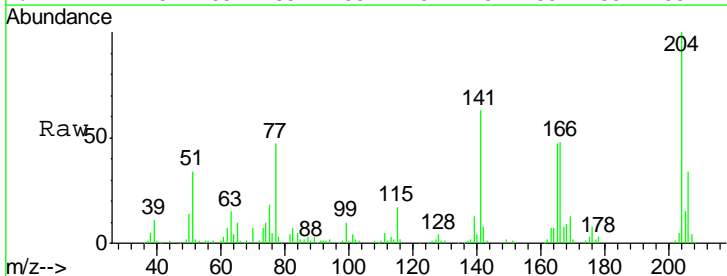
Instrument :
 BNA_G
 ClientSampled :
 SSTD02092

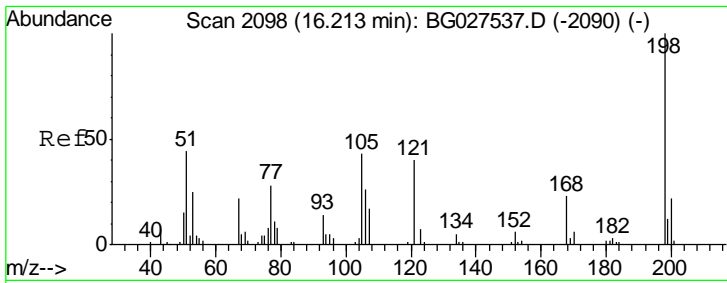
Tgt Ion	Resp	Lower	Upper
166	161988		
165	98.3	79.7	119.5
167	13.4	11.4	17.2



#59
 4-Chlorophenyl-phenylether
 Concen: 21.83 ng/ul
 RT: 16.12 min Scan# 2082
 Delta R.T. -0.01 min
 Lab File: BG027555.D
 Acq: 20 Jun 2017 16:07

Tgt Ion	Resp	Lower	Upper
204	84902		
206	33.5	32.3	48.5
141	62.6	57.5	86.3

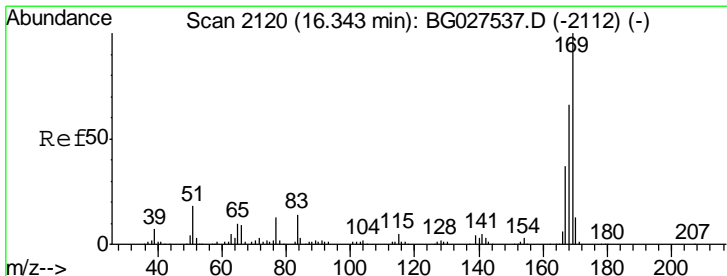
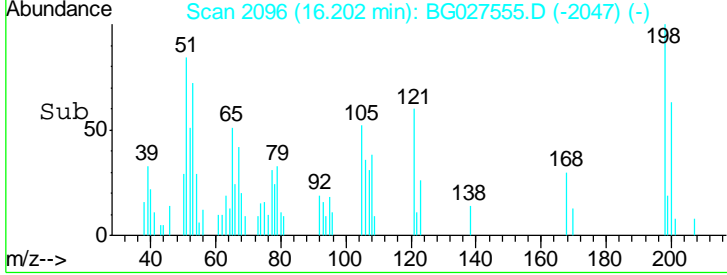
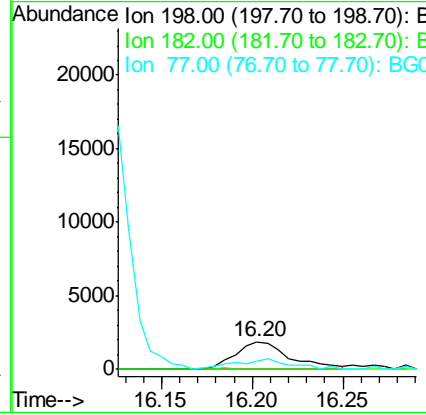
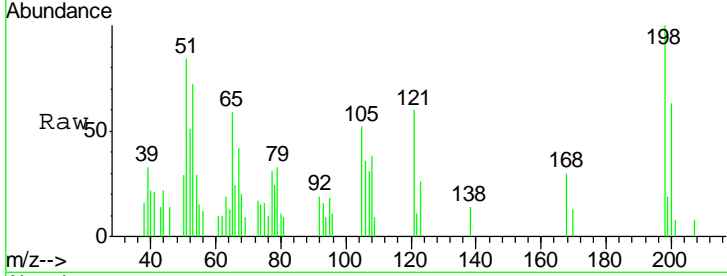




#63
 4,6-Dinitro-2-methylphenol
 Concen: 2.48 ng/ul
 RT: 16.20 min Scan# 2096
 Delta R.T. -0.01 min
 Lab File: BG027555.D
 Acq: 20 Jun 2017 16:07

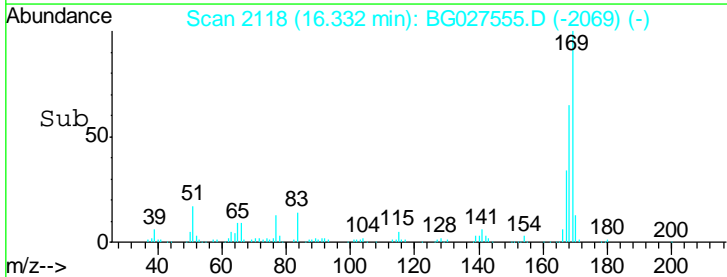
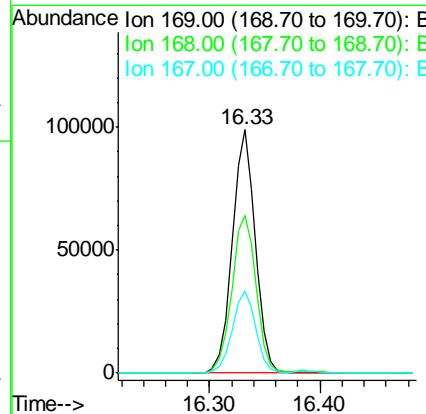
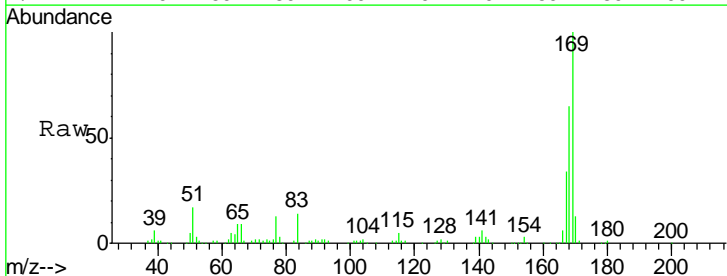
Instrument :
 BNA_G
 ClientSampled :
 SSTD02092

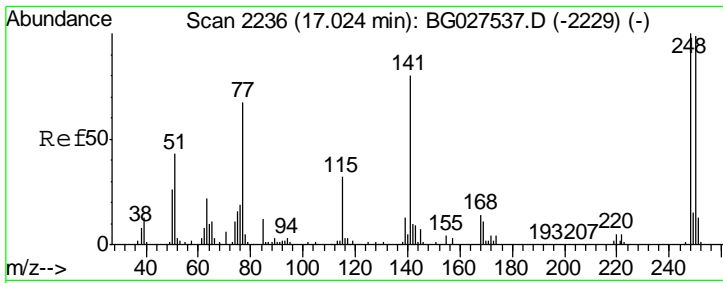
Tgt Ion	Resp	Lower	Upper
198	3910		
182	0.0	5.8	6.4#
77	30.6	22.1	33.9



#64
 N-Nitrosodiphenylamine
 Concen: 20.91 ng/ul
 RT: 16.33 min Scan# 2118
 Delta R.T. -0.01 min
 Lab File: BG027555.D
 Acq: 20 Jun 2017 16:07

Tgt Ion	Resp	Lower	Upper
169	144496		
168	64.8	59.1	88.7
167	33.8	29.7	44.5

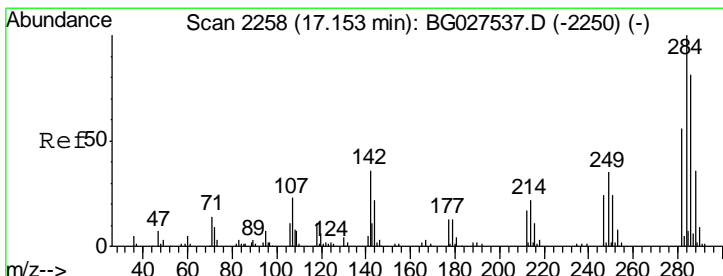
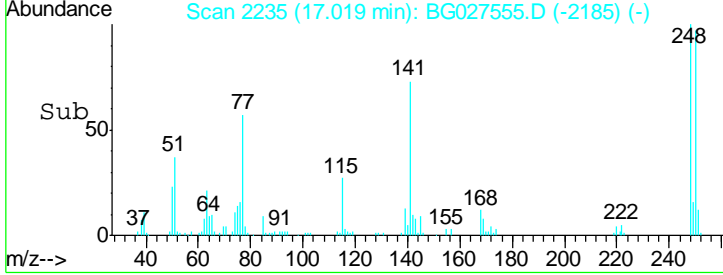
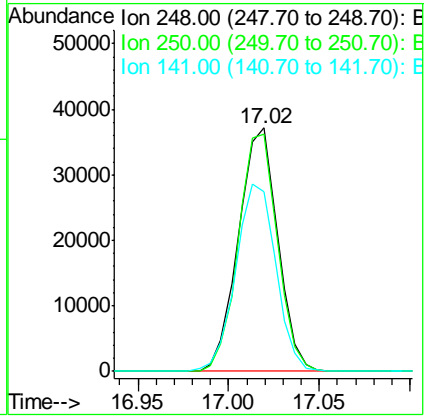
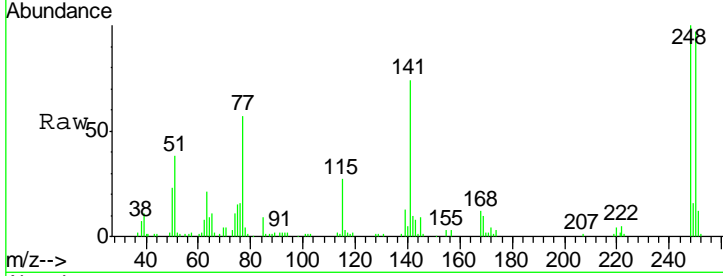




#65
 4-Bromophenyl-phenylether
 Concen: 23.09 ng/ul
 RT: 17.02 min Scan# 2235
 Delta R.T. -0.01 min
 Lab File: BG027555.D
 Acq: 20 Jun 2017 16:07

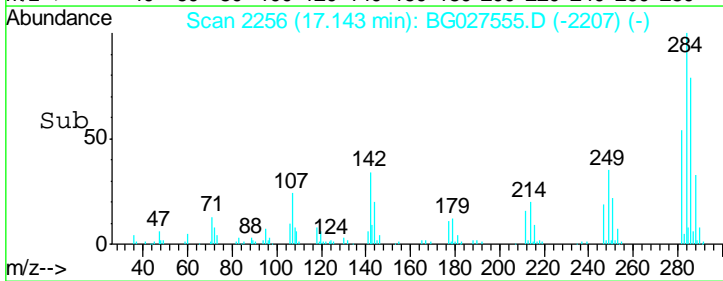
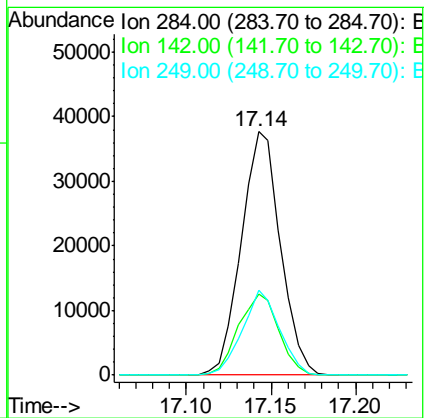
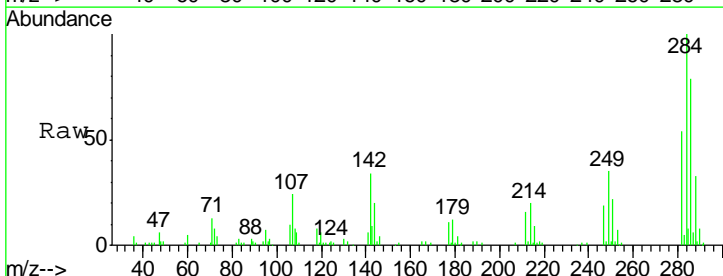
Instrument :
 BNA_G
 ClientSampled :
 SSTD02092

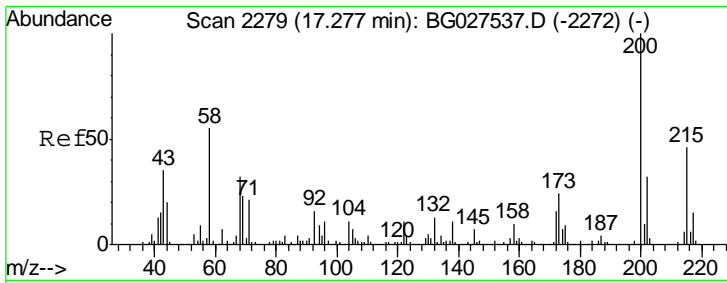
Tgt Ion	Resp	Lower	Upper
248	56175		
248	100		
250	97.2	71.9	107.9
141	73.8	53.8	80.8



#66
 Hexachlorobenzene
 Concen: 23.63 ng/ul
 RT: 17.14 min Scan# 2256
 Delta R.T. -0.01 min
 Lab File: BG027555.D
 Acq: 20 Jun 2017 16:07

Tgt Ion	Resp	Lower	Upper
284	60554		
284	100		
142	33.5	26.1	39.1
249	35.0	25.9	38.9

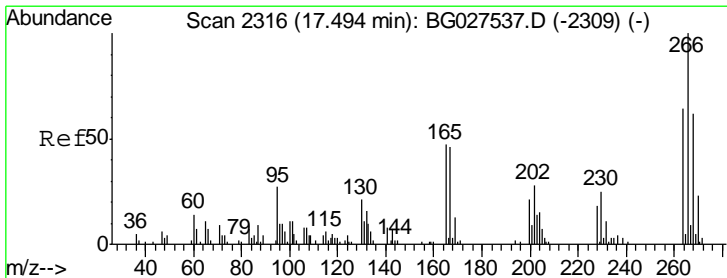
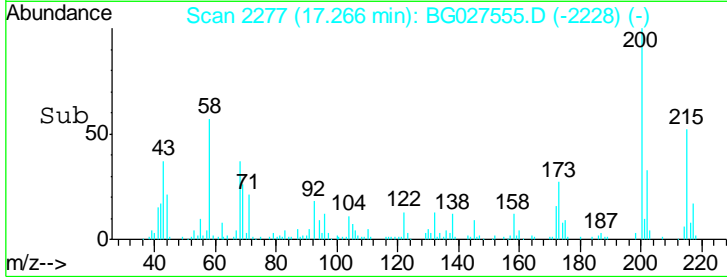
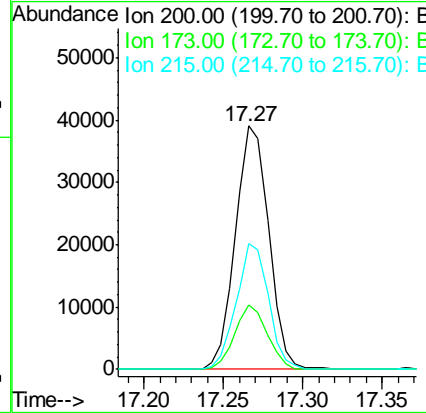
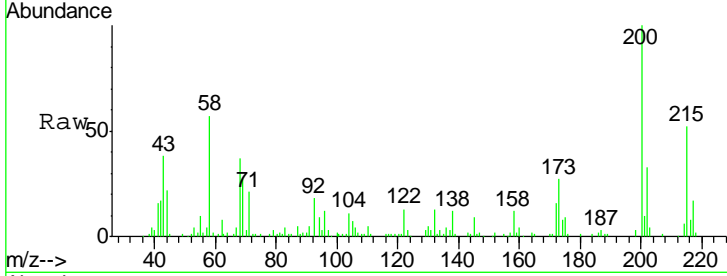




#67
 Atrazine
 Concen: 21.47 ng/ul
 RT: 17.27 min Scan# 2277
 Delta R.T. -0.01 min
 Lab File: BG027555.D
 Acq: 20 Jun 2017 16:07

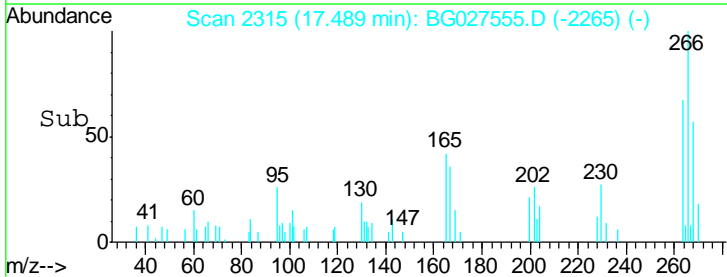
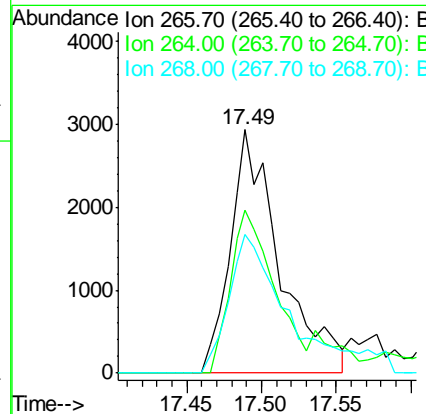
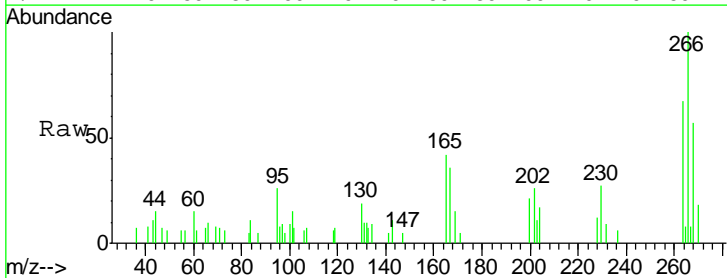
Instrument :
 BNA_G
 ClientSampled :
 SSTD02092

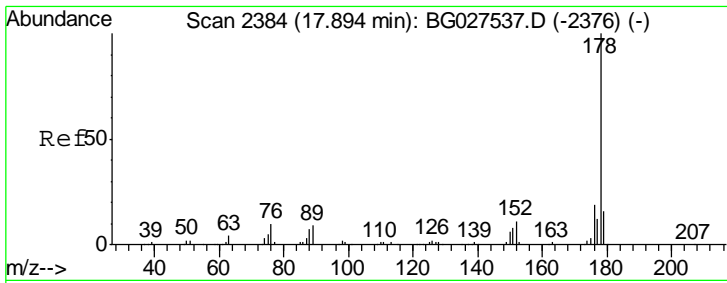
Tgt Ion	Resp	Lower	Upper
200	56811		
173	26.6	19.2	28.8
215	51.6	40.3	60.5



#68
 Pentachlorophenol
 Concen: 3.97 ng/ul
 RT: 17.49 min Scan# 2315
 Delta R.T. -0.01 min
 Lab File: BG027555.D
 Acq: 20 Jun 2017 16:07

Tgt Ion	Resp	Lower	Upper
266	6760		
264	67.0	47.1	70.7
268	57.1	56.2	84.4

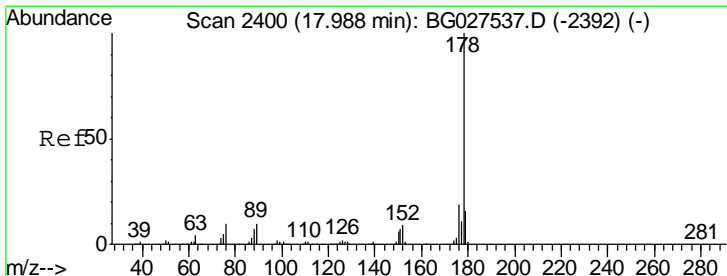
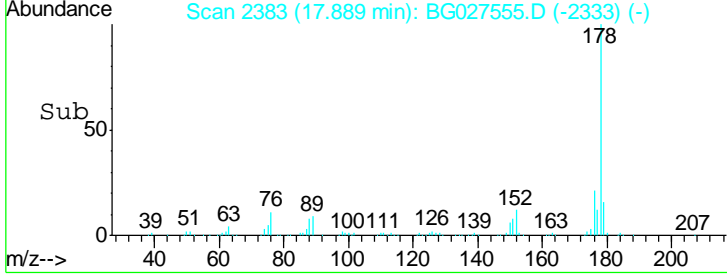
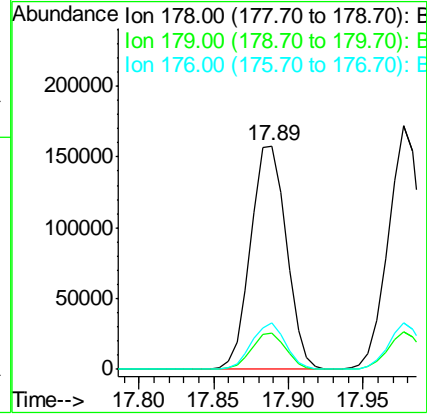
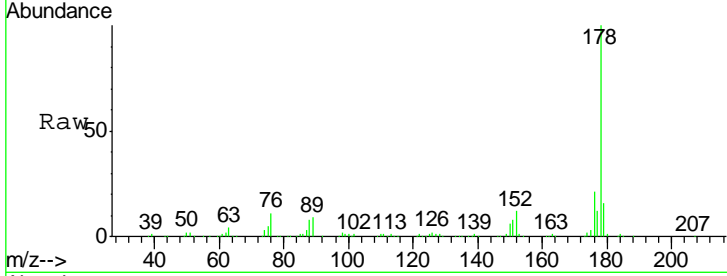




#69
 Phenanthrene
 Concen: 20.27 ng/ul
 RT: 17.89 min Scan# 2383
 Delta R.T. -0.01 min
 Lab File: BG027555.D
 Acq: 20 Jun 2017 16:07

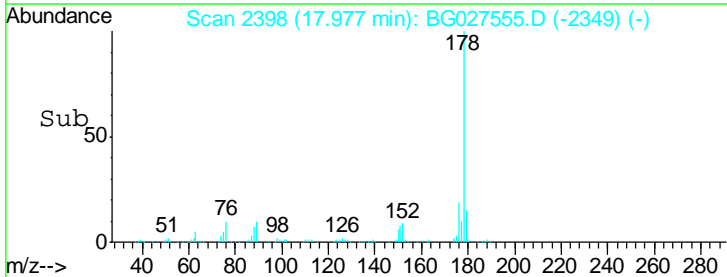
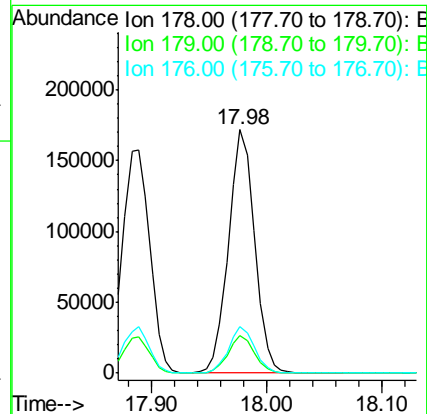
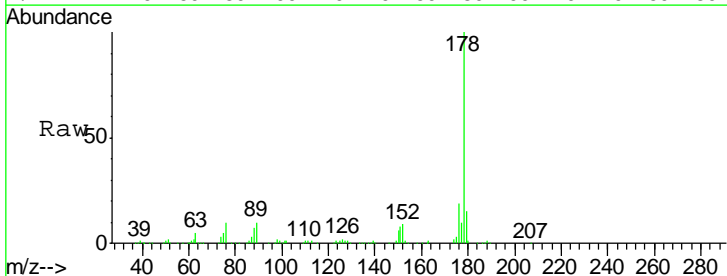
Instrument :
 BNA_G
 ClientSampled :
 SSTD02092

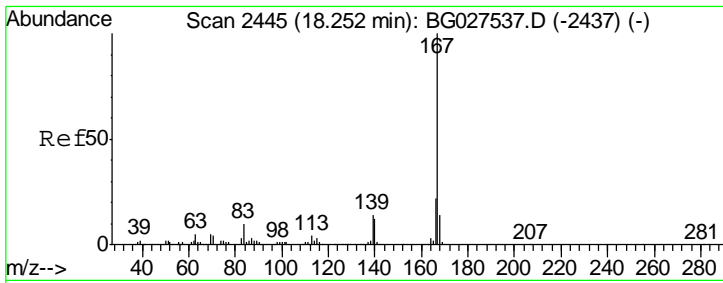
Tgt Ion	Resp	Lower	Upper
178	100		
179	16.1	12.4	18.6
176	20.7	16.5	24.7



#71
 Anthracene
 Concen: 20.61 ng/ul
 RT: 17.98 min Scan# 2398
 Delta R.T. -0.01 min
 Lab File: BG027555.D
 Acq: 20 Jun 2017 16:07

Tgt Ion	Resp	Lower	Upper
178	100		
179	15.2	12.6	19.0
176	19.0	15.9	23.9

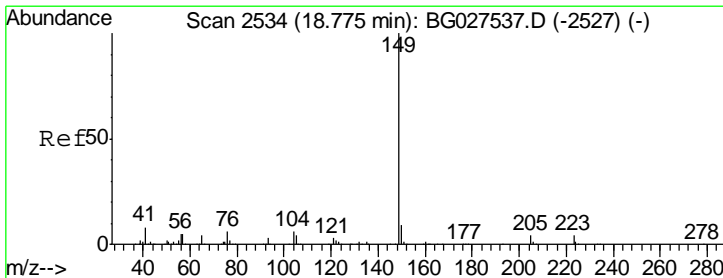
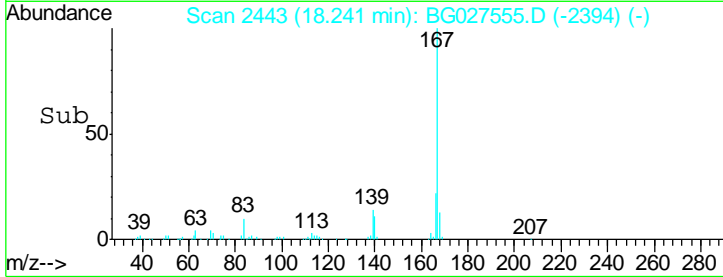
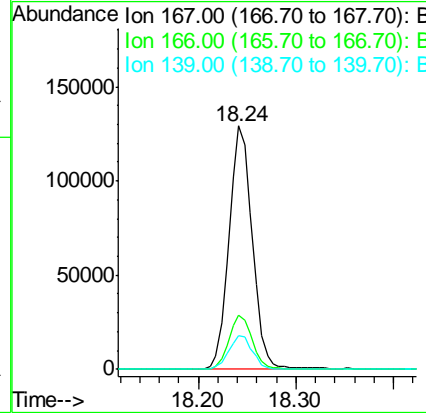
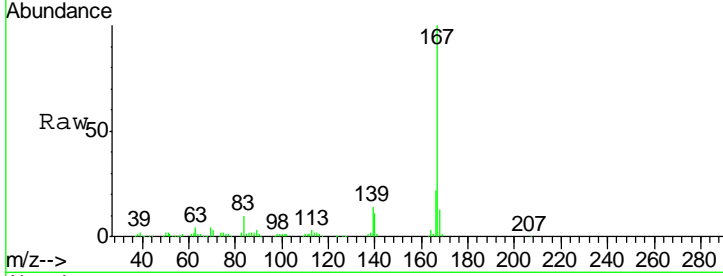




#72
 Carbazole
 Concen: 18.98 ng/ul
 RT: 18.24 min Scan# 2443
 Delta R.T. -0.01 min
 Lab File: BG027555.D
 Acq: 20 Jun 2017 16:07

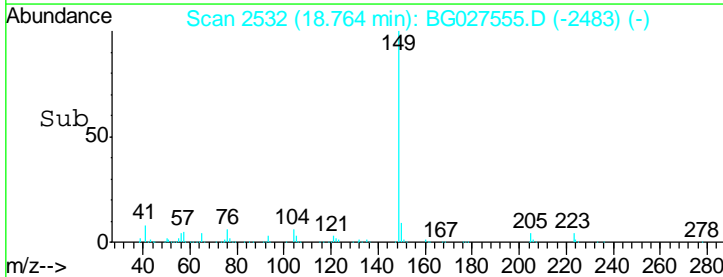
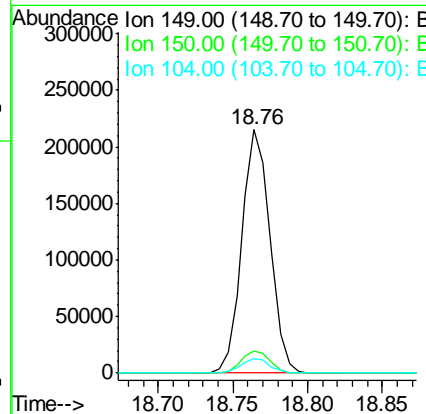
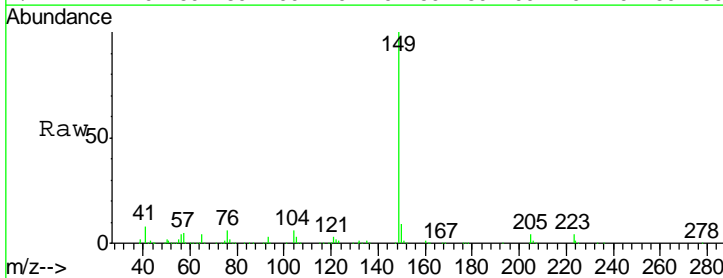
Instrument :
 BNA_G
 ClientSampled :
 SST02092

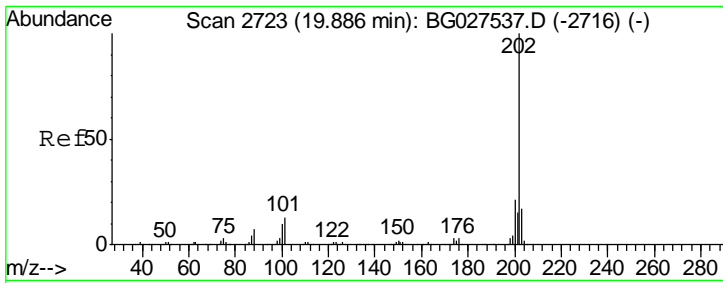
Tgt Ion	Resp	Lower	Upper
167	214261		
166	22.1	17.9	26.9
139	13.9	10.5	15.7



#73
 Di-n-butylphthalate
 Concen: 20.22 ng/ul
 RT: 18.76 min Scan# 2532
 Delta R.T. -0.01 min
 Lab File: BG027555.D
 Acq: 20 Jun 2017 16:07

Tgt Ion	Resp	Lower	Upper
149	282264		
150	9.2	7.9	11.9
104	6.0	5.8	8.8

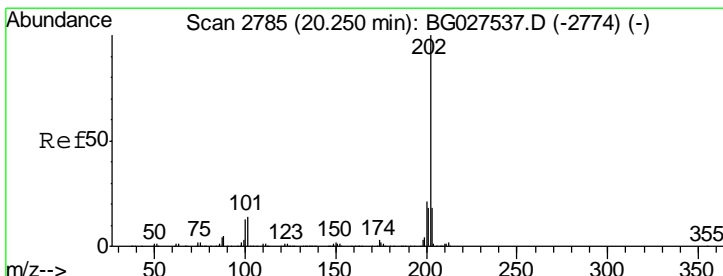
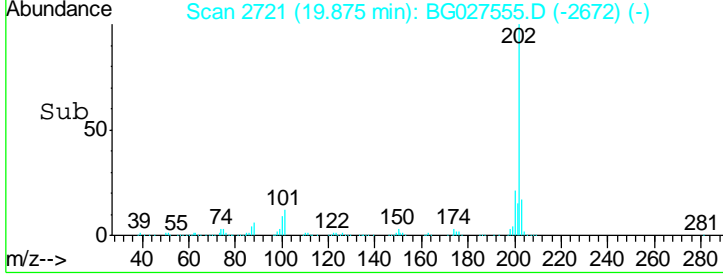
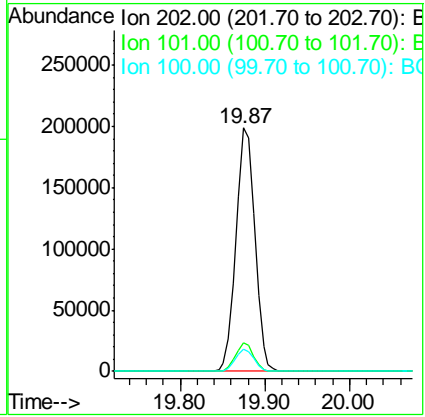
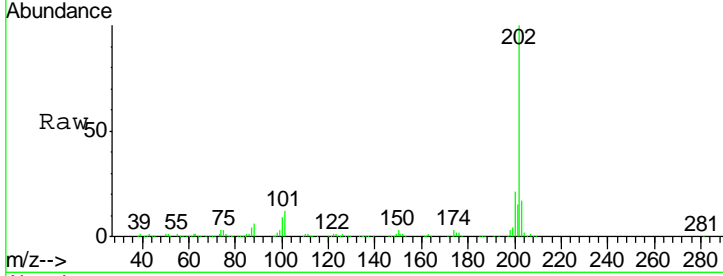




#74
 Fluoranthene
 Concen: 20.93 ng/ul
 RT: 19.87 min Scan# 2721
 Delta R.T. -0.01 min
 Lab File: BG027555.D
 Acq: 20 Jun 2017 16:07

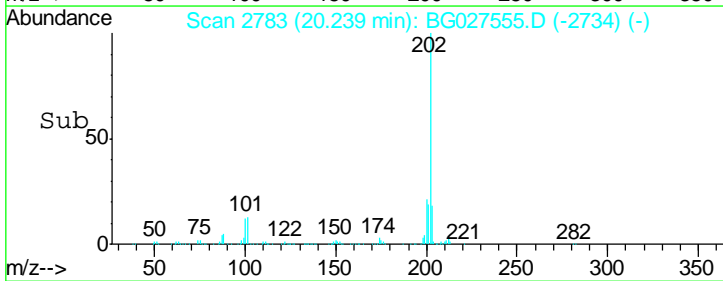
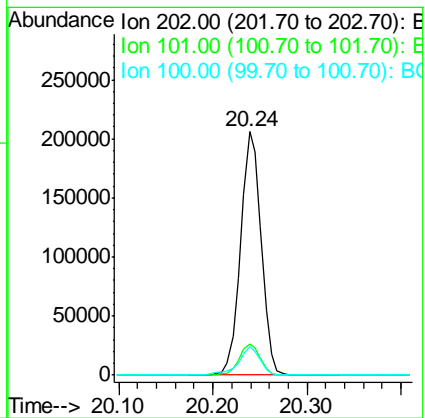
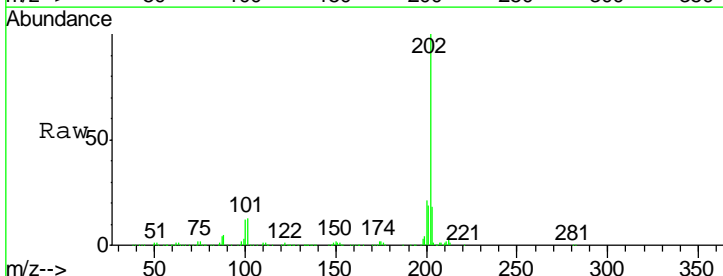
Instrument :
 BNA_G
 ClientSampled :
 SSTD02092

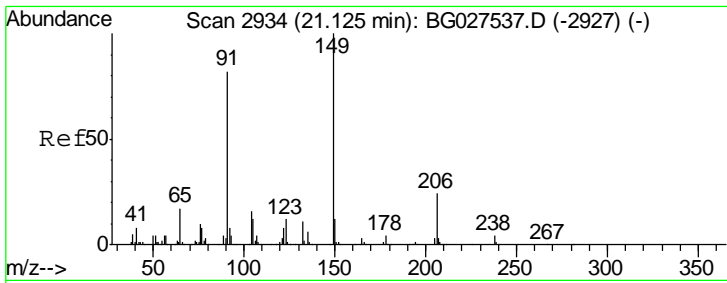
Tgt Ion	Ratio	Lower	Upper
202	100		
101	11.7	6.2	9.2#
100	9.4	5.2	7.8#



#77
 Pyrene
 Concen: 19.88 ng/ul
 RT: 20.24 min Scan# 2783
 Delta R.T. -0.01 min
 Lab File: BG027555.D
 Acq: 20 Jun 2017 16:07

Tgt Ion	Ratio	Lower	Upper
202	100		
101	12.7	6.9	10.3#
100	11.8	6.6	10.0#

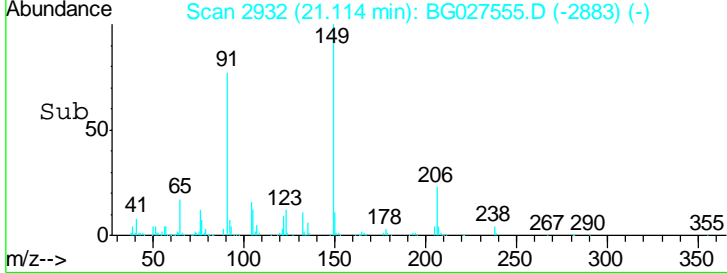
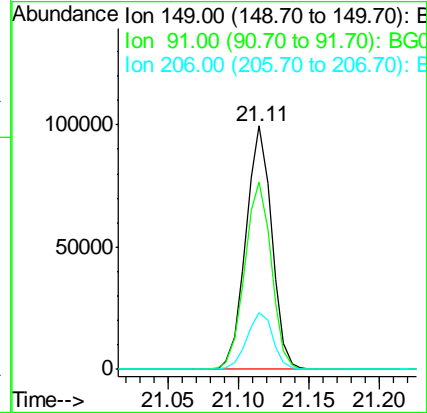
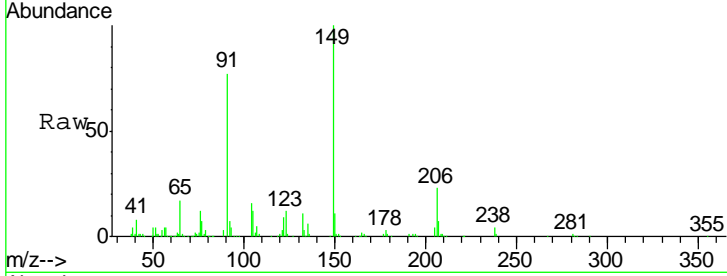




#78
 Butylbenzylphthalate
 Concen: 21.55 ng/ul
 RT: 21.11 min Scan# 2932
 Delta R.T. -0.01 min
 Lab File: BG027555.D
 Acq: 20 Jun 2017 16:07

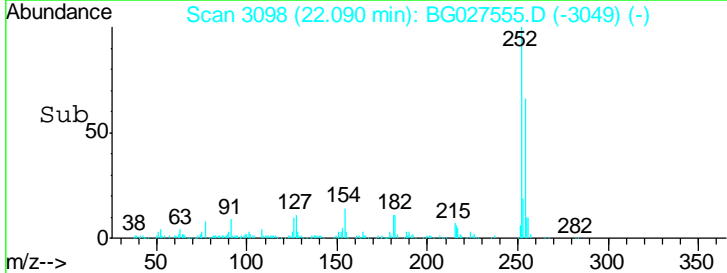
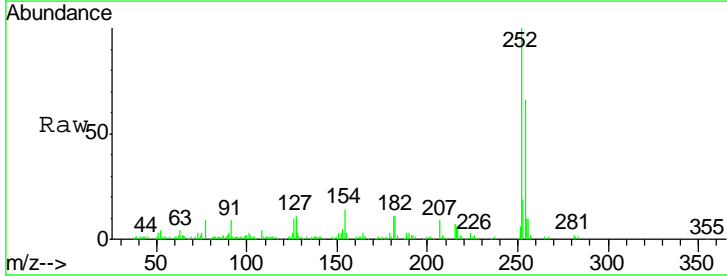
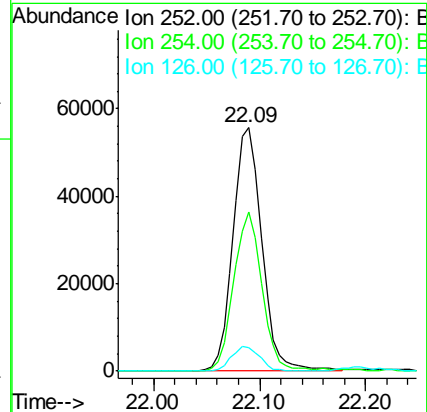
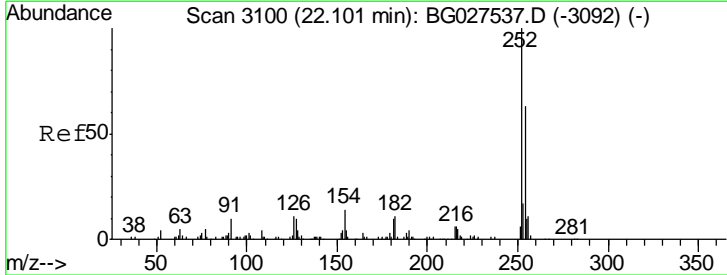
Instrument :
 BNA_G
 ClientSampled :
 SSTD02092

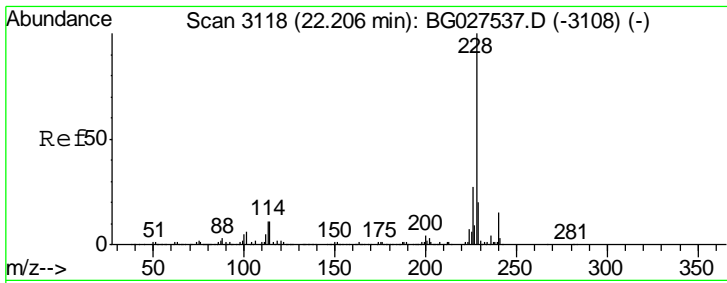
Tgt Ion	Resp	Lower	Upper
149	127719		
91	76.8	65.8	98.6
206	23.1	20.1	30.1



#79
 3,3'-Dichlorobenzidine
 Concen: 21.45 ng/ul
 RT: 22.09 min Scan# 3098
 Delta R.T. -0.01 min
 Lab File: BG027555.D
 Acq: 20 Jun 2017 16:07

Tgt Ion	Resp	Lower	Upper
252	105064		
254	65.6	49.0	73.6
126	9.5	5.1	7.7#

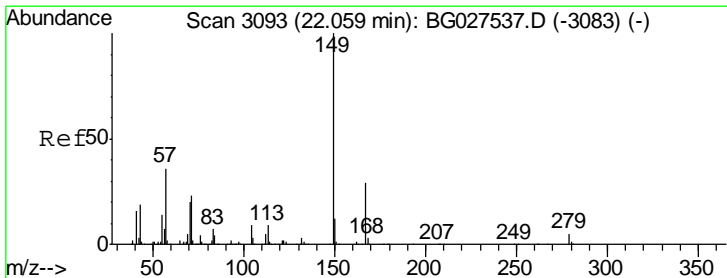
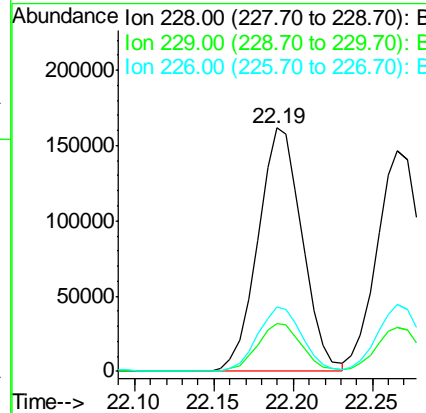
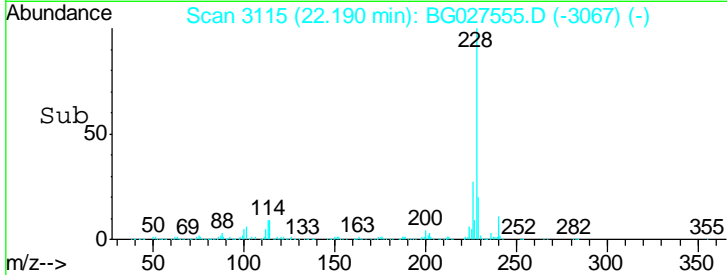
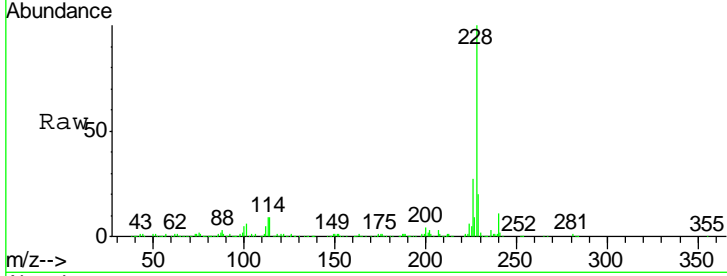




#80
 Benzo(a)anthracene
 Concen: 21.15 ng/ul
 RT: 22.19 min Scan# 3115
 Delta R.T. -0.02 min
 Lab File: BG027555.D
 Acq: 20 Jun 2017 16:07

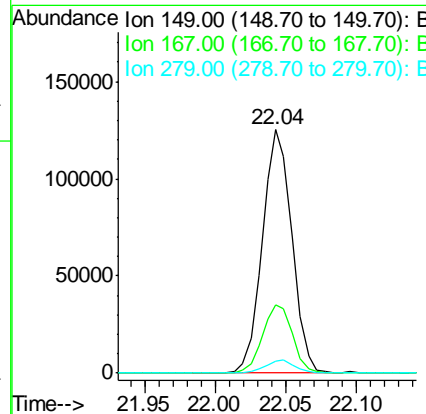
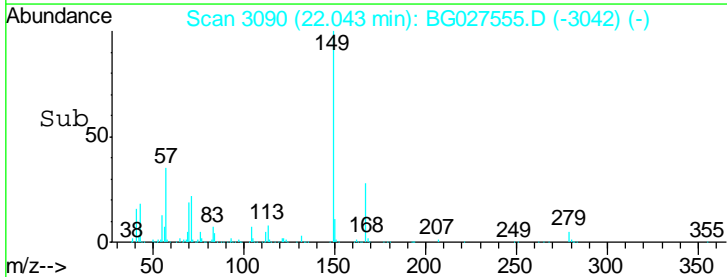
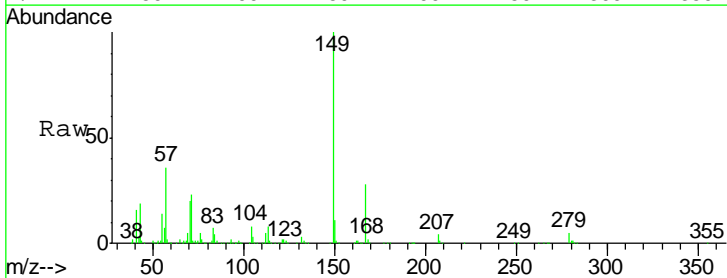
Instrument :
 BNA_G
 ClientSampled :
 SST02092

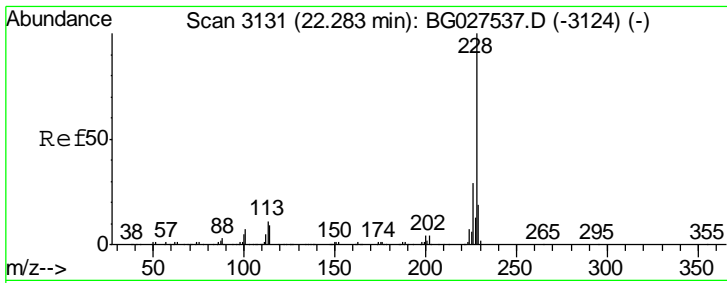
Tgt Ion	Resp	Lower	Upper
228	100		
229	19.8	16.3	24.5
226	26.6	21.9	32.9



#81
 Bis(2-ethylhexyl)phthalate
 Concen: 21.67 ng/ul
 RT: 22.04 min Scan# 3090
 Delta R.T. -0.02 min
 Lab File: BG027555.D
 Acq: 20 Jun 2017 16:07

Tgt Ion	Resp	Lower	Upper
149	100		
167	27.9	21.8	32.8
279	4.9	4.5	6.7

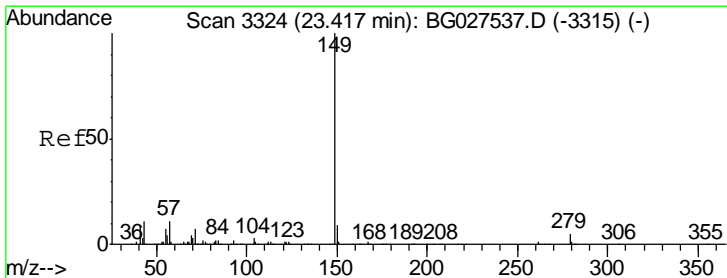
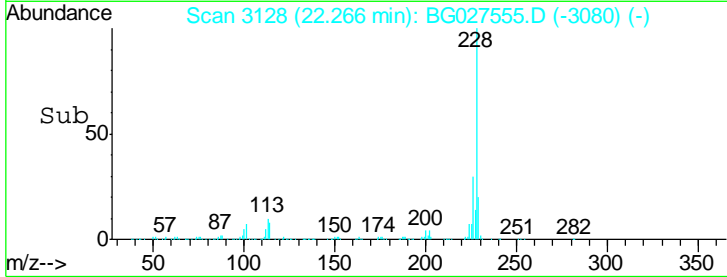
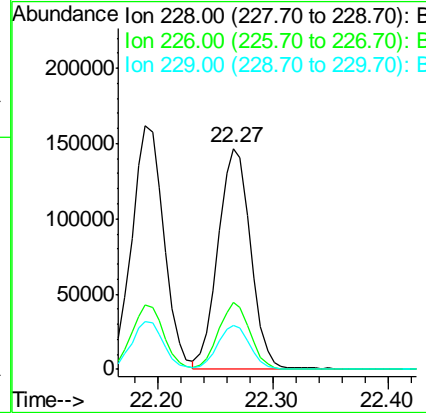
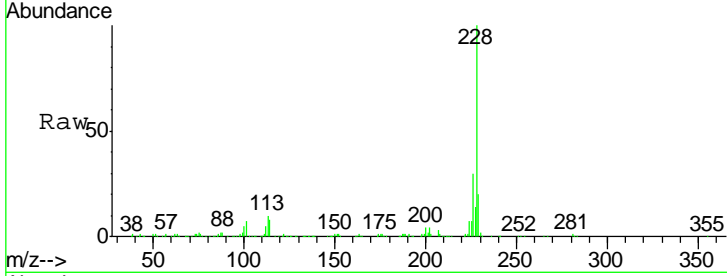




#82
 Chrysene
 Concen: 21.26 ng/ul
 RT: 22.27 min Scan# 3128
 Delta R.T. -0.02 min
 Lab File: BG027555.D
 Acq: 20 Jun 2017 16:07

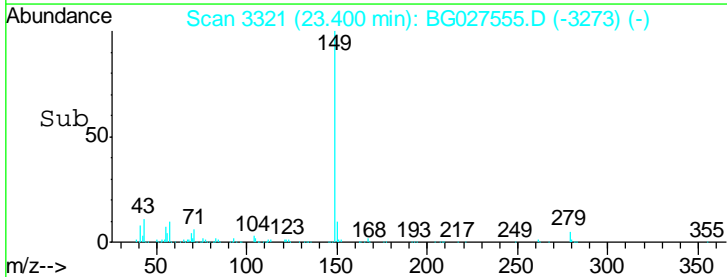
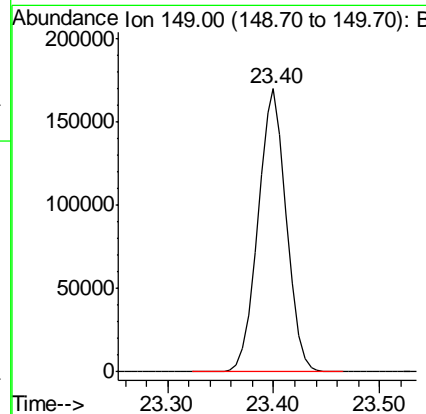
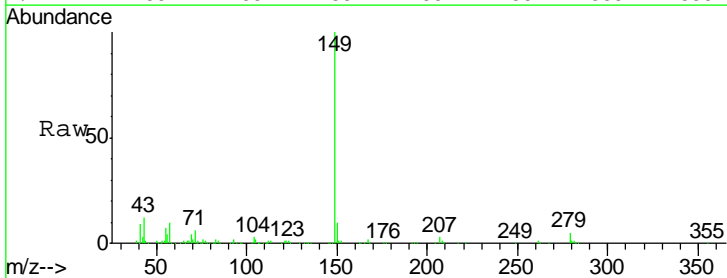
Instrument :
 BNA_G
 ClientSampled :
 SSTD02092

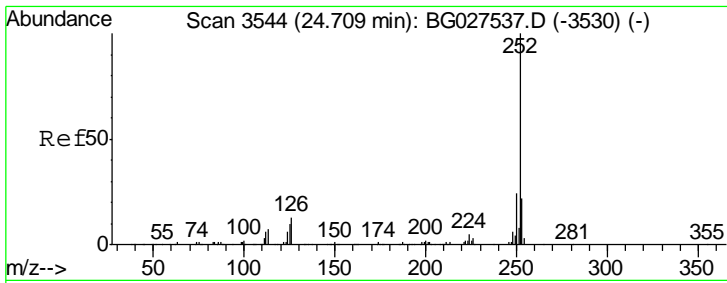
Tgt Ion	Resp	Lower	Upper
228	100		
226	30.4	24.0	36.0
229	20.0	16.9	25.3



#84
 Di-n-octyl phthalate
 Concen: 19.83 ng/ul
 RT: 23.40 min Scan# 3321
 Delta R.T. -0.02 min
 Lab File: BG027555.D
 Acq: 20 Jun 2017 16:07

Tgt Ion:149 Resp: 315555

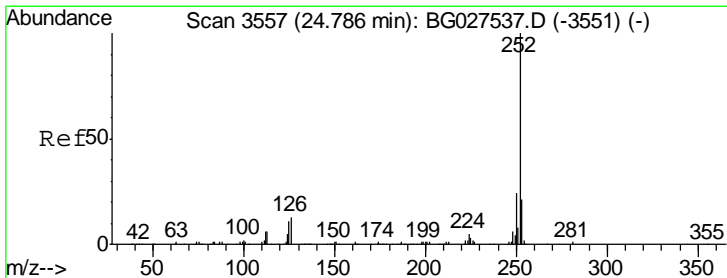
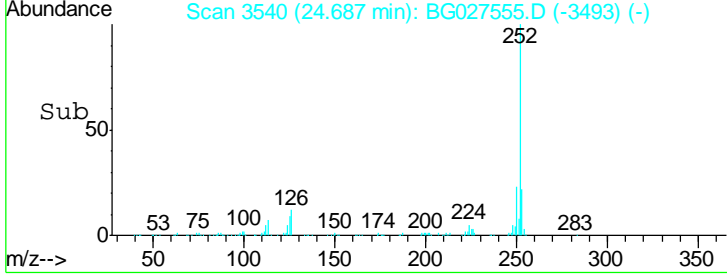
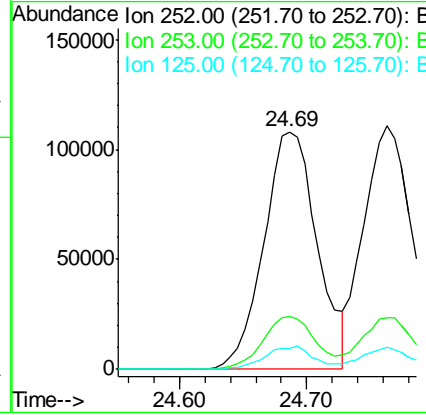
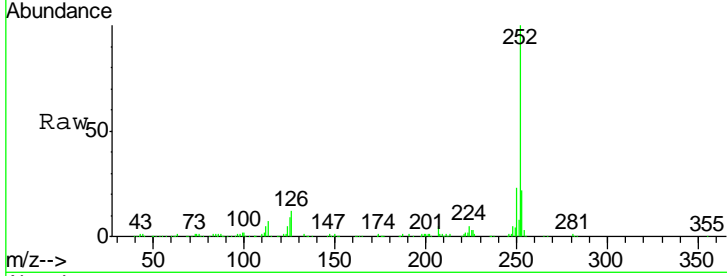




#85
 Benzo(b)fluoranthene
 Concen: 20.88 ng/ul
 RT: 24.69 min Scan# 3540
 Delta R.T. -0.02 min
 Lab File: BG027555.D
 Acq: 20 Jun 2017 16:07

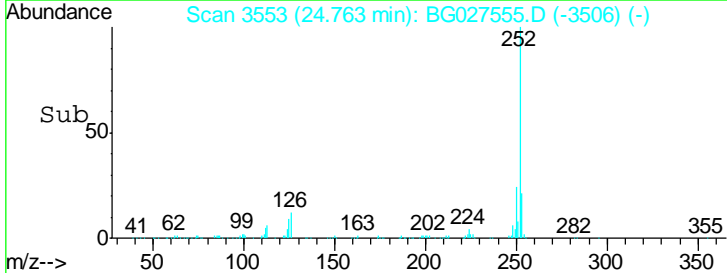
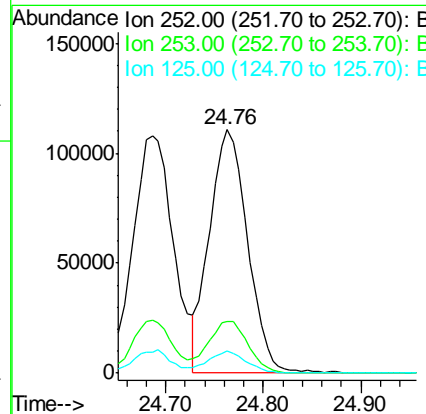
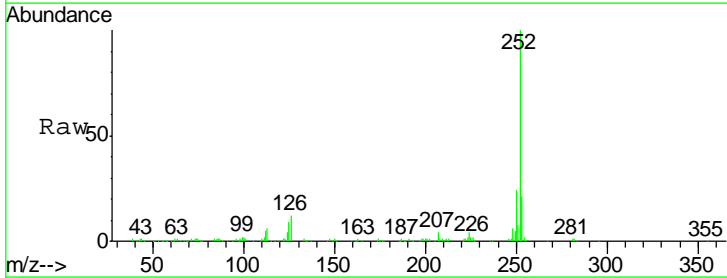
Instrument :
 BNA_G
 ClientSampled :
 SSTD02092

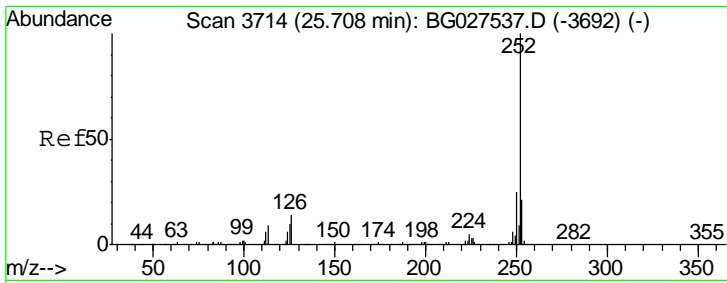
Tgt Ion	Resp	Lower	Upper
252	315784		
253	22.1	17.7	26.5
125	8.7	4.0	6.0#



#86
 Benzo(k)fluoranthene
 Concen: 20.50 ng/ul
 RT: 24.76 min Scan# 3553
 Delta R.T. -0.02 min
 Lab File: BG027555.D
 Acq: 20 Jun 2017 16:07

Tgt Ion	Resp	Lower	Upper
252	298066		
253	21.1	18.5	27.7
125	8.9	4.1	6.1#

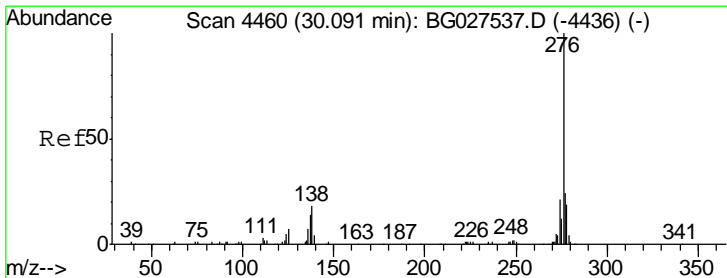
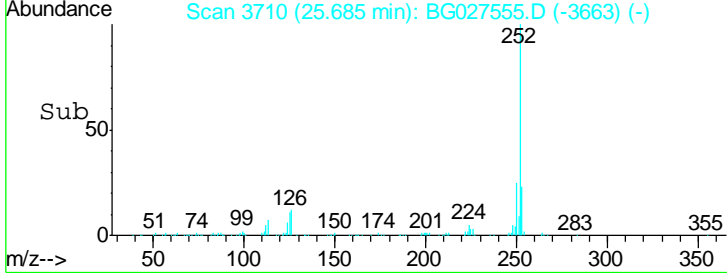
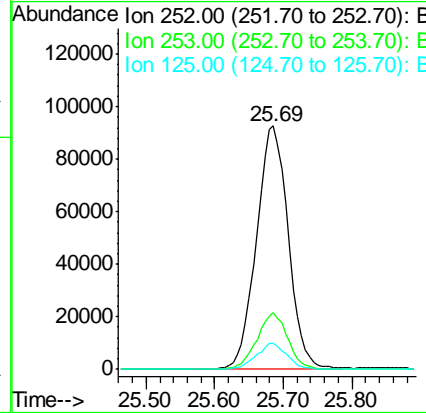
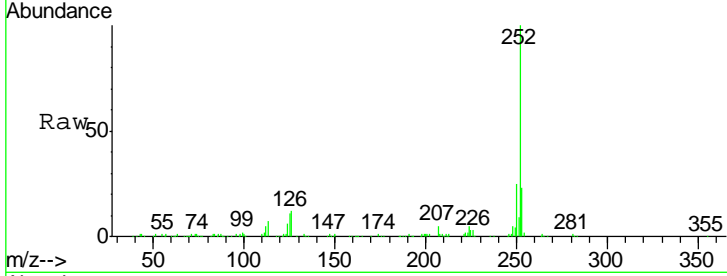




#88
 Benzo(a)pyrene
 Concen: 20.60 ng/ul
 RT: 25.69 min Scan# 3710
 Delta R.T. -0.02 min
 Lab File: BG027555.D
 Acq: 20 Jun 2017 16:07

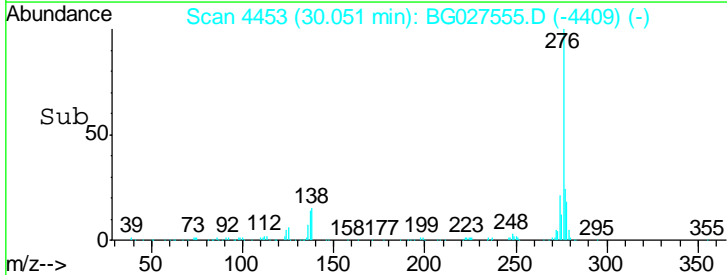
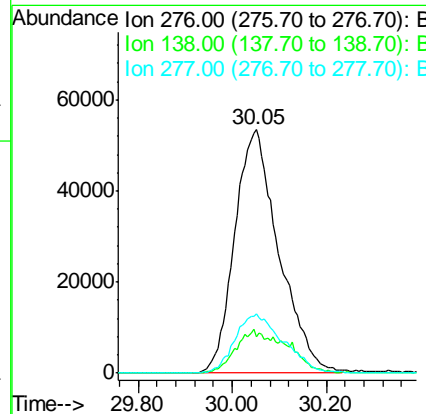
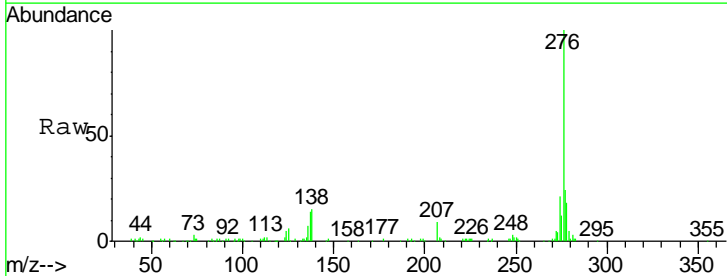
Instrument :
 BNA_G
 ClientSampleId :
 SSTD02092

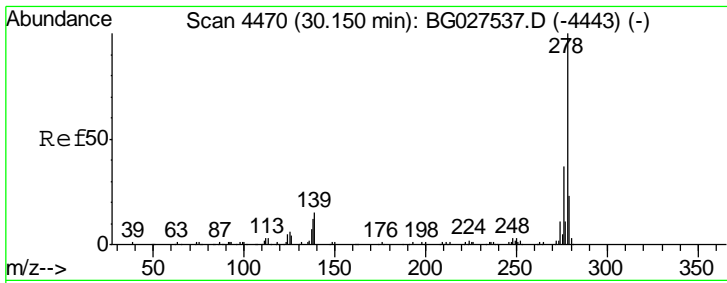
Tgt Ion	Resp	Lower	Upper
252	100		
253	23.1	17.8	26.6
125	10.7	5.4	8.0#



#89
 Indeno(1,2,3-cd)pyrene
 Concen: 21.01 ng/ul
 RT: 30.05 min Scan# 4453
 Delta R.T. -0.04 min
 Lab File: BG027555.D
 Acq: 20 Jun 2017 16:07

Tgt Ion	Resp	Lower	Upper
276	100		
138	14.7	8.2	12.4#
277	24.3	18.6	28.0

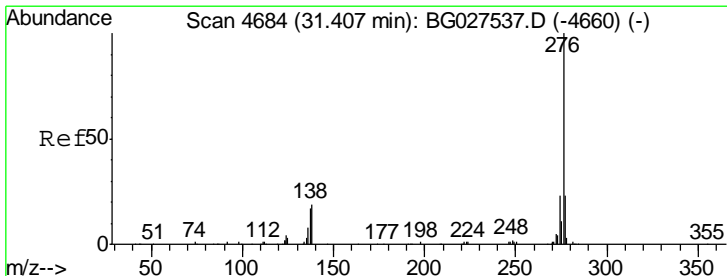
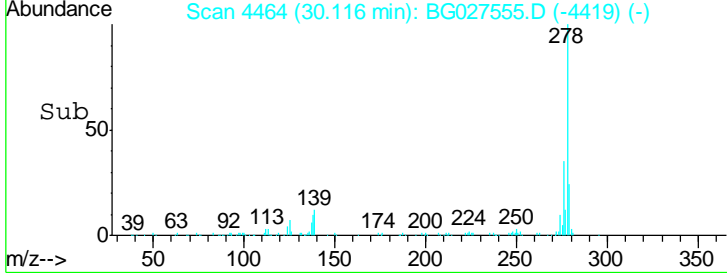
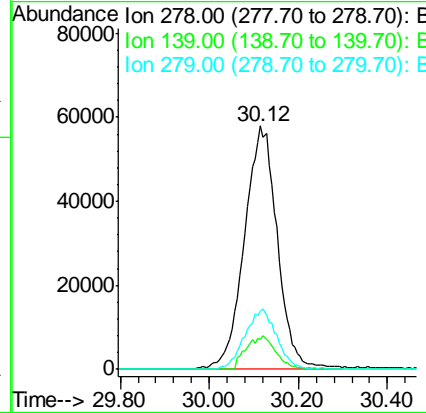
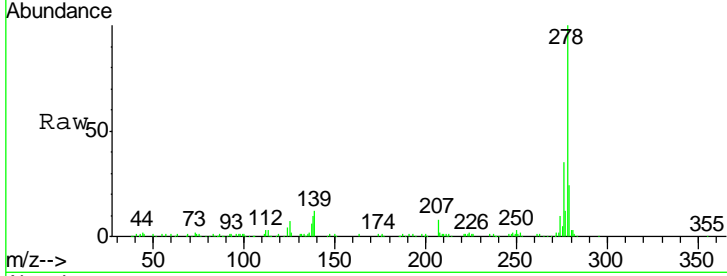




#90
 Dibenzo(a,h)anthracene
 Concen: 20.67 ng/ul
 RT: 30.12 min Scan# 4464
 Delta R.T. -0.03 min
 Lab File: BG027555.D
 Acq: 20 Jun 2017 16:07

Instrument :
 BNA_G
 ClientSampled :
 SSTD02092

Tgt Ion	Resp	Lower	Upper
278	100		
139	12.3	6.7	10.1#
279	23.8	20.9	31.3



#91
 Benzo(g,h,i)perylene
 Concen: 21.31 ng/ul
 RT: 31.36 min Scan# 4676
 Delta R.T. -0.05 min
 Lab File: BG027555.D
 Acq: 20 Jun 2017 16:07

Tgt Ion	Resp	Lower	Upper
276	100		
138	15.1	8.6	12.8#
277	23.6	17.6	26.4

