

Data Path : Z:\HPCHEM1\BNA_G\DATA\BG062117\
 Data File : BG027581.D
 Acq On : 22 Jun 2017 5:07
 Operator : SJ/JU
 Sample : PB99860BL
 Misc :
 ALS Vial : 22 Sample Multiplier: 1

Instrument :
 BNA_G
 ClientSampleId :
 PB99860BL

Quant Time: Jun 22 07:58:12 2017
 Quant Method : Z:\HPCHEM1\BNA_G\METHODS\8270-BG062117.M
 Quant Title : ASP BNA STANDARDS FOR 5 POINT CALIBRATION
 QLast Update : Wed Jun 21 18:52:15 2017
 Response via : Initial Calibration

| Internal Standards | R.T. | QIon | Response | Conc | Units | Dev(Min) |
|-----------------------------|-------|------|----------|--------|-------|----------|
| 1) 1,4-Dichlorobenzene-d4 | 8.51 | 152 | 19965 | 20.00 | ng | 0.00 |
| 21) Naphthalene-d8 | 11.32 | 136 | 93068 | 20.00 | ng | 0.00 |
| 38) Acenaphthene-d10 | 15.09 | 164 | 56874 | 20.00 | ng | 0.00 |
| 63) Phenanthrene-d10 | 17.84 | 188 | 174561 | 20.00 | ng | 0.00 |
| 75) Chrysene-d12 | 22.20 | 240 | 201498 | 20.00 | ng | -0.01 |
| 86) Perylene-d12 | 25.84 | 264 | 191045 | 20.00 | ng | 0.00 |
| System Monitoring Compounds | | | | | | |
| 5) 2-Fluorophenol | 6.09 | 112 | 209236 | 149.16 | ng | 0.00 |
| 7) Phenol-d6 | 7.64 | 99 | 284095 | 136.80 | ng | 0.00 |
| 23) Nitrobenzene-d5 | 9.67 | 82 | 179032 | 91.03 | ng | 0.00 |
| 41) 2,4,6-Tribromophenol | 16.57 | 330 | 137854 | 162.58 | ng | 0.00 |
| 44) 2-Fluorobiphenyl | 13.71 | 172 | 388376 | 93.28 | ng | 0.00 |
| 78) Terphenyl-d14 | 20.42 | 244 | 882586 | 103.20 | ng | 0.00 |

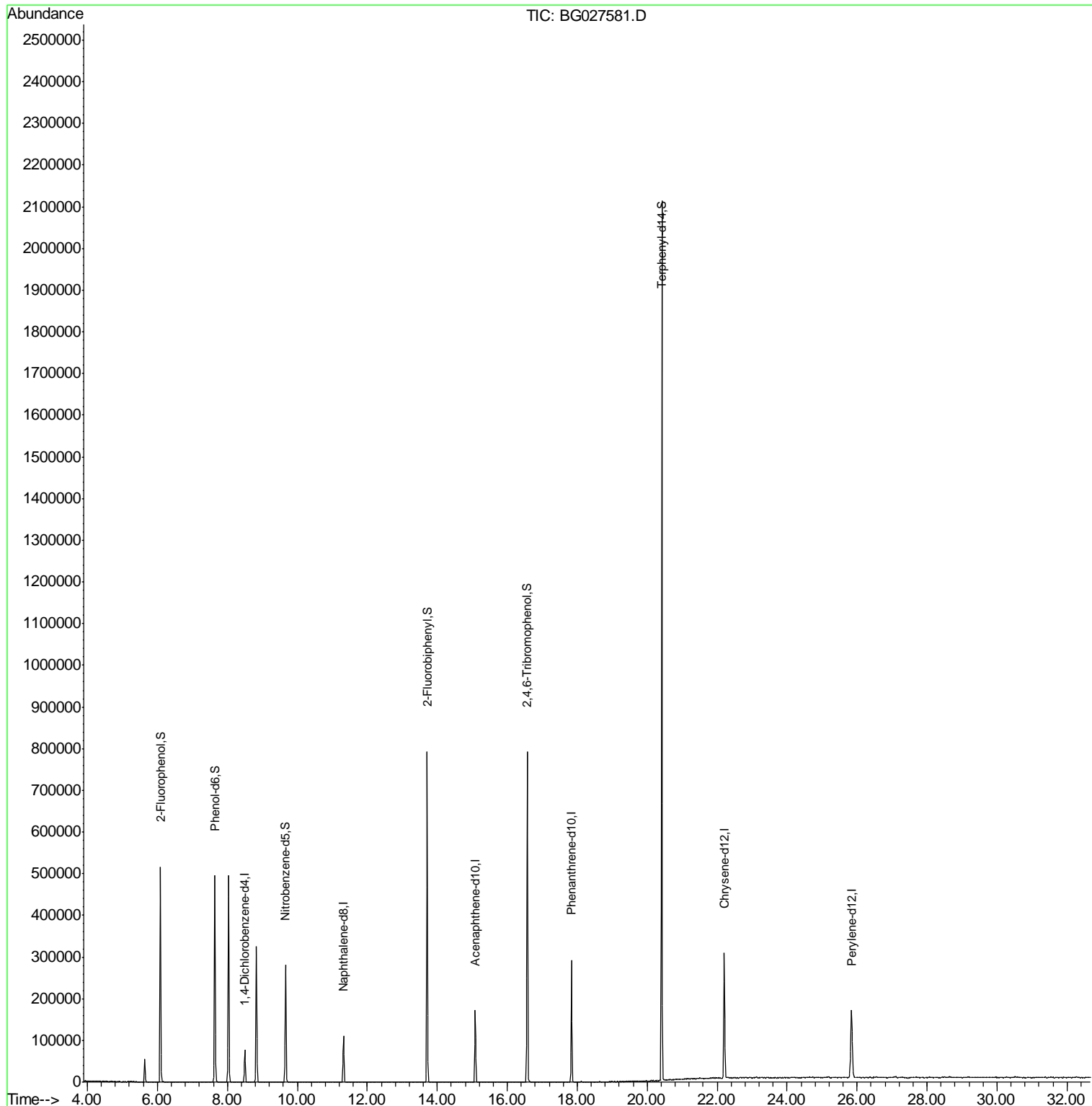
Target Compounds Qvalue

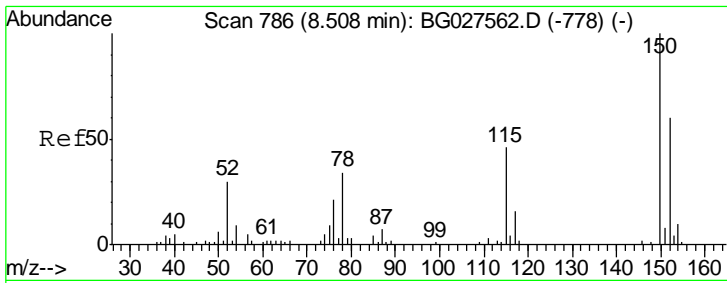
(#) = qualifier out of range (m) = manual integration (+) = signals summed

Data Path : Z:\HPCHEM1\BNA_G\DATA\BG062117\
 Data File : BG027581.D
 Acq On : 22 Jun 2017 5:07
 Operator : SJ/JU
 Sample : PB99860BL
 Misc :
 ALS Vial : 22 Sample Multiplier: 1

Instrument :
 BNA_G
 ClientSampleId :
 PB99860BL

Quant Time: Jun 22 07:58:12 2017
 Quant Method : Z:\HPCHEM1\BNA_G\METHODS\8270-BG062117.M
 Quant Title : ASP BNA STANDARDS FOR 5 POINT CALIBRATION
 QLast Update : Wed Jun 21 18:52:15 2017
 Response via : Initial Calibration

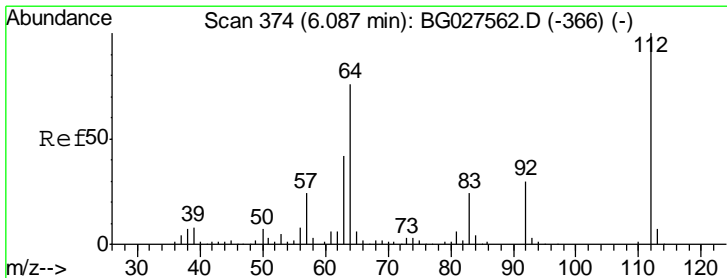
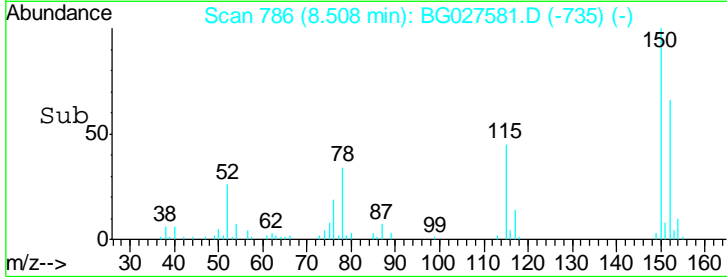
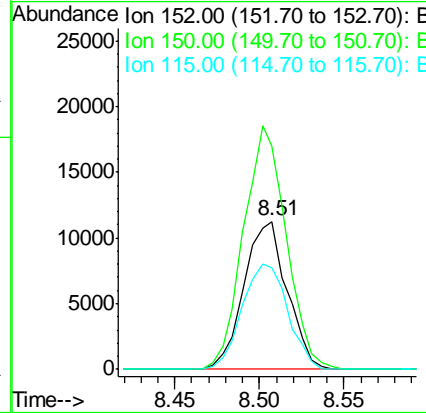
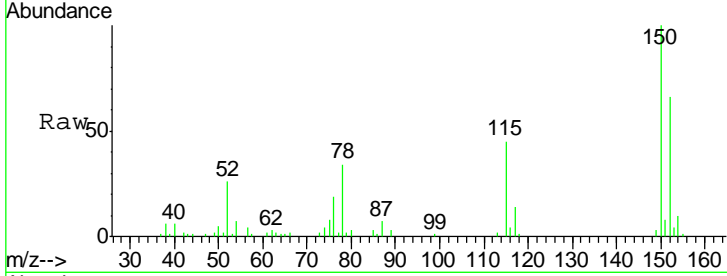




#1
 1,4-Dichlorobenzene-d4
 Concen: 20.000 ng
 RT: 8.51 min Scan# 786
 Delta R.T. -0.00 min
 Lab File: BG027581.D
 Acq: 22 Jun 2017 5:07

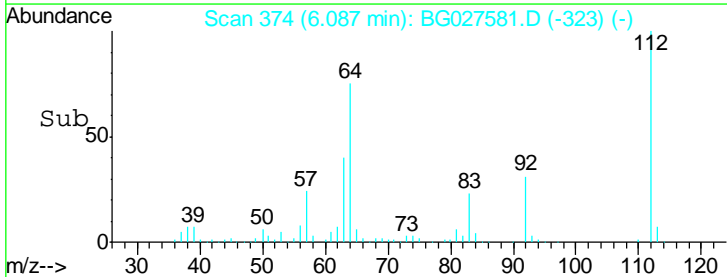
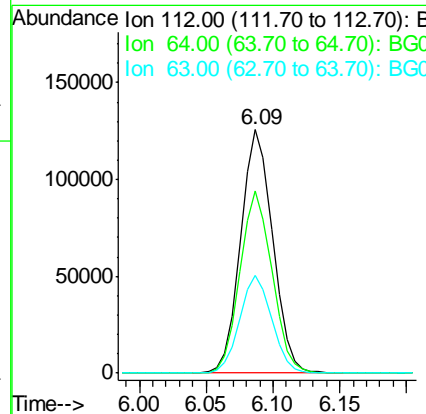
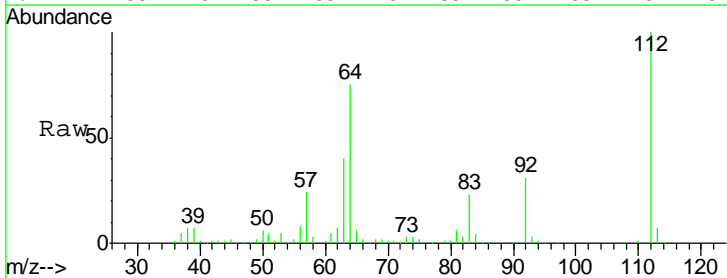
Instrument :
 BNA_G
 ClientSampleID :
 PB99860BL

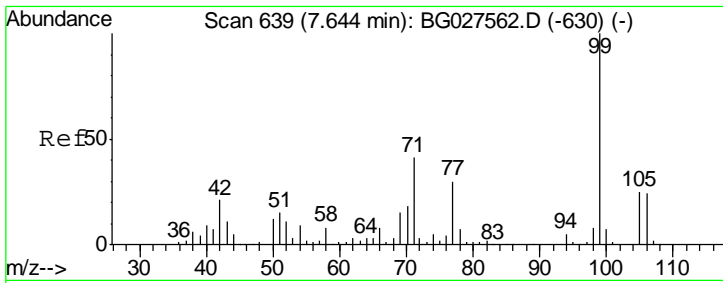
| Tgt Ion | Resp | Lower | Upper |
|---------|-------|-------|-------|
| 152 | 19965 | | |
| 152 | 100 | | |
| 150 | 150.6 | 114.0 | 171.0 |
| 115 | 68.4 | 48.1 | 72.1 |



#5
 2-Fluorophenol
 Concen: 149.155 ng
 RT: 6.09 min Scan# 374
 Delta R.T. -0.00 min
 Lab File: BG027581.D
 Acq: 22 Jun 2017 5:07

| Tgt Ion | Resp | Lower | Upper |
|---------|--------|-------|-------|
| 112 | 209236 | | |
| 112 | 100 | | |
| 64 | 74.7 | 61.8 | 92.6 |
| 63 | 39.9 | 37.2 | 55.8 |

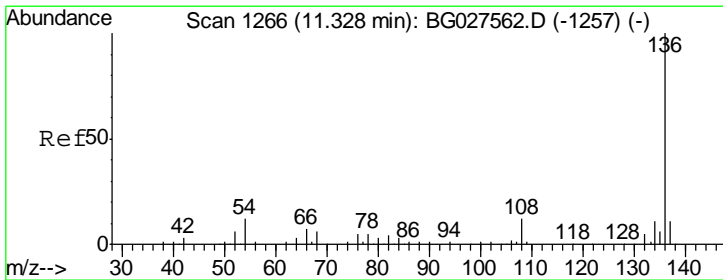
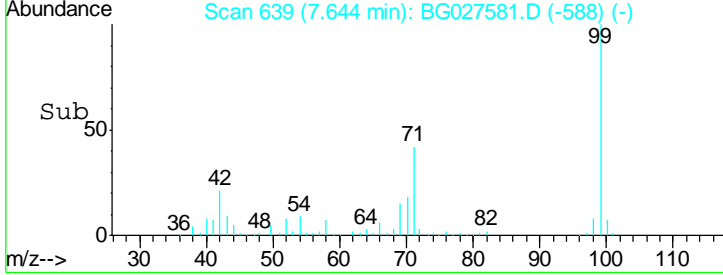
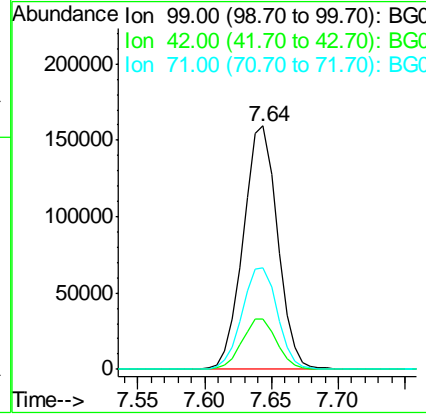
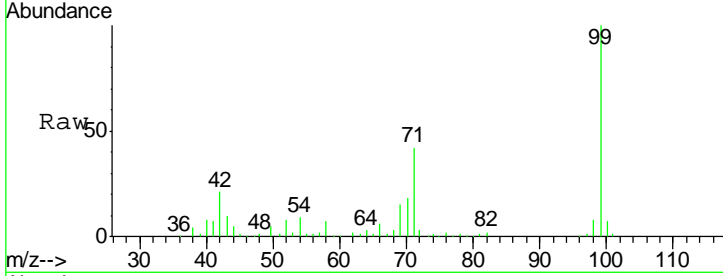




#7
 Phenol-d6
 Concen: 136.800 ng
 RT: 7.64 min Scan# 639
 Delta R.T. -0.00 min
 Lab File: BG027581.D
 Acq: 22 Jun 2017 5:07

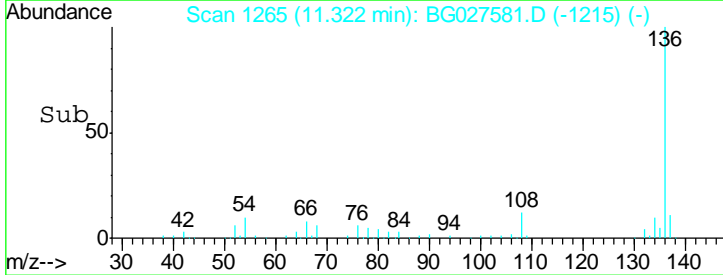
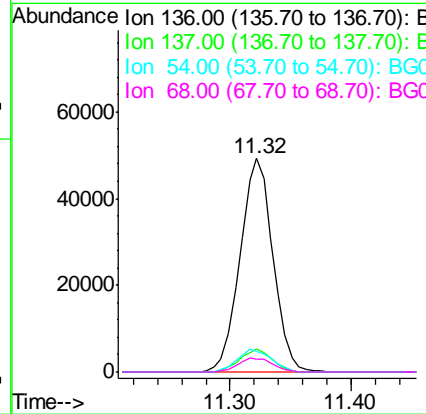
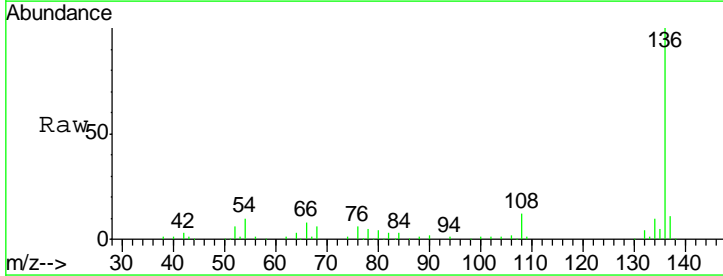
Instrument :
 BNA_G
ClientSampled :
 PB99860BL

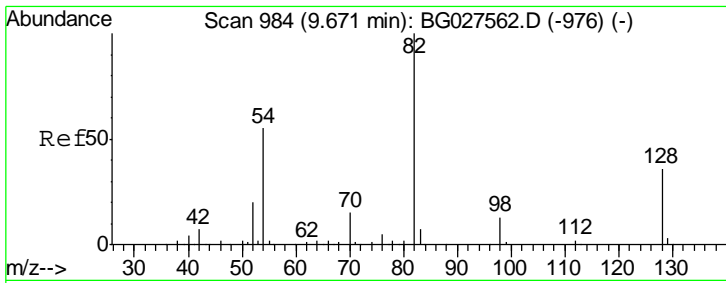
| Tgt Ion | Resp | Lower | Upper |
|---------|------|-------|-------|
| 99 | 100 | | |
| 42 | 20.7 | 20.5 | 30.7 |
| 71 | 41.7 | 37.6 | 56.4 |



#21
 Naphthalene-d8
 Concen: 20.000 ng
 RT: 11.32 min Scan# 1265
 Delta R.T. -0.01 min
 Lab File: BG027581.D
 Acq: 22 Jun 2017 5:07

| Tgt Ion | Resp | Lower | Upper |
|---------|------|-------|-------|
| 136 | 100 | | |
| 137 | 10.8 | 8.9 | 13.3 |
| 54 | 9.7 | 9.3 | 13.9 |
| 68 | 6.3 | 5.1 | 7.7 |

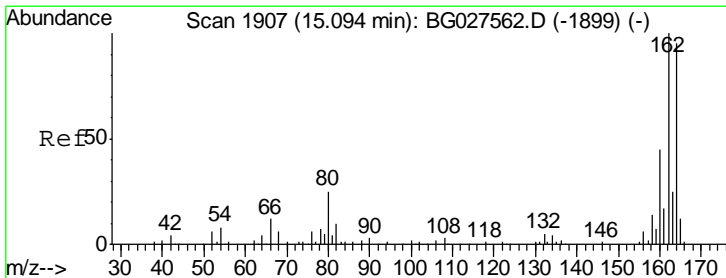
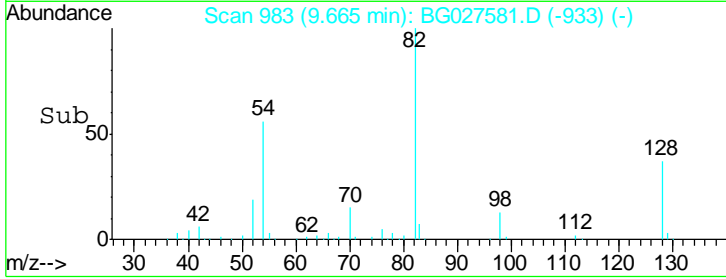
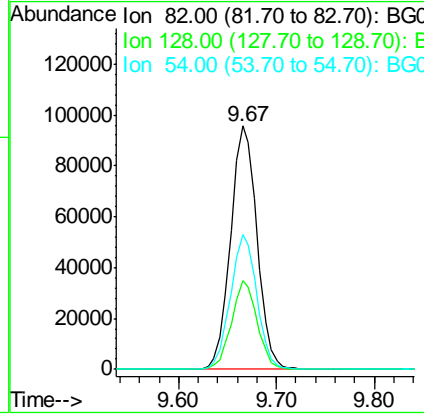
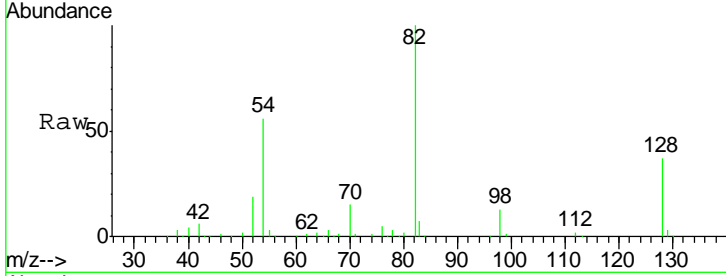




#23
 Nitrobenzene-d5
 Concen: 91.025 ng
 RT: 9.67 min Scan# 983
 Delta R.T. -0.01 min
 Lab File: BG027581.D
 Acq: 22 Jun 2017 5:07

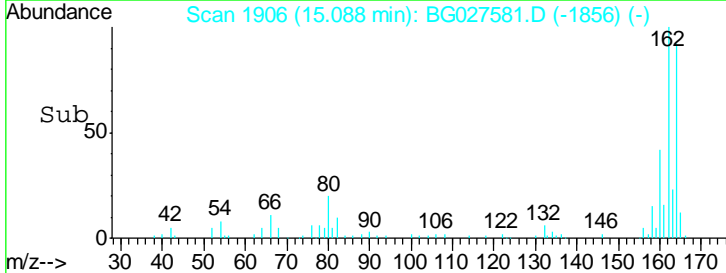
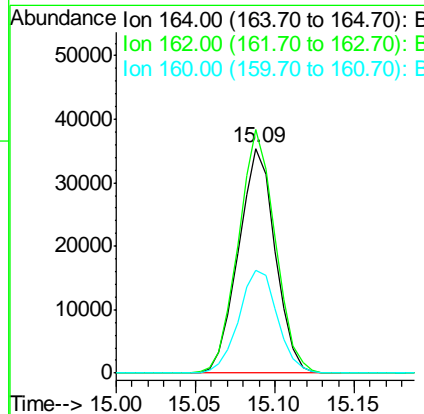
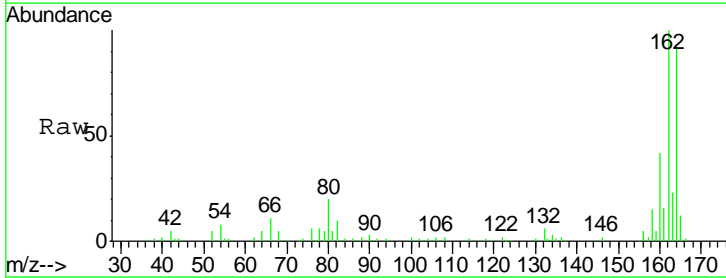
Instrument :
 BNA_G
 ClientSampled :
 PB99860BL

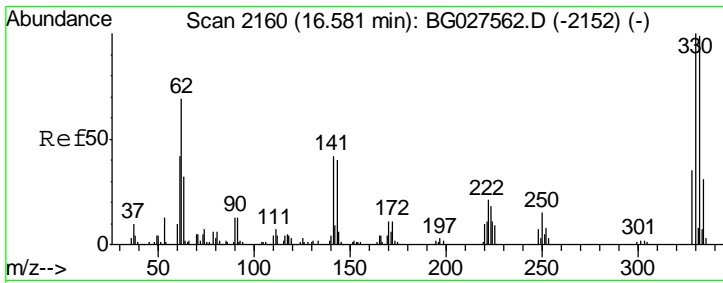
| Tgt Ion | Resp | Lower | Upper |
|---------|--------|-------|-------|
| 82 | 179032 | | |
| 128 | 36.7 | 26.4 | 39.6 |
| 54 | 55.5 | 49.4 | 74.2 |



#38
 Acenaphthene-d10
 Concen: 20.000 ng
 RT: 15.09 min Scan# 1906
 Delta R.T. -0.01 min
 Lab File: BG027581.D
 Acq: 22 Jun 2017 5:07

| Tgt Ion | Resp | Lower | Upper |
|---------|-------|-------|-------|
| 164 | 56874 | | |
| 162 | 108.4 | 85.1 | 127.7 |
| 160 | 45.8 | 34.7 | 52.1 |

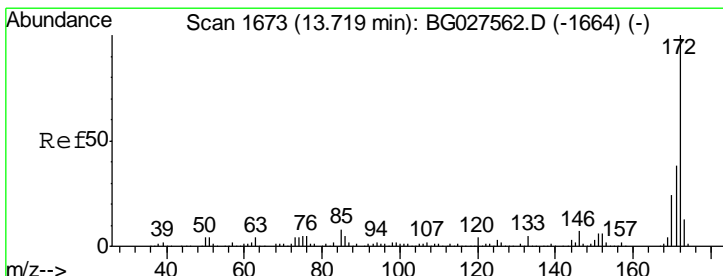
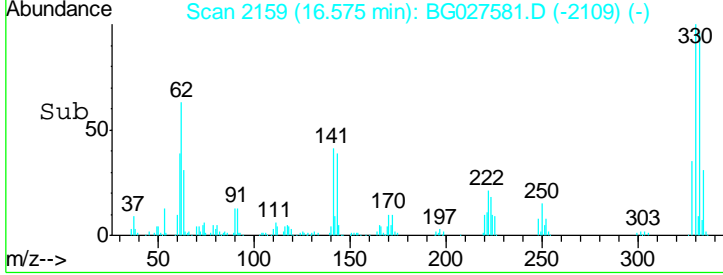
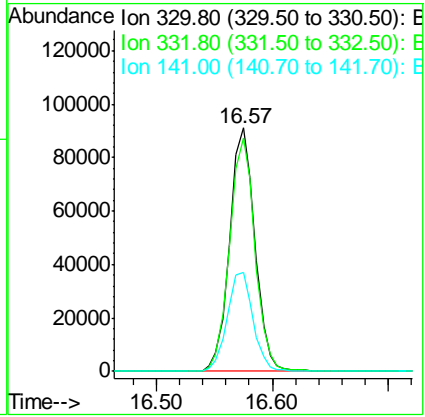
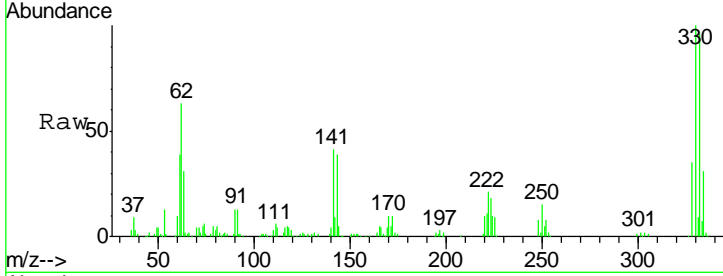




#41
 2,4,6-Tribromophenol
 Concen: 162.583 ng
 RT: 16.57 min Scan# 2159
 Delta R.T. -0.01 min
 Lab File: BG027581.D
 Acq: 22 Jun 2017 5:07

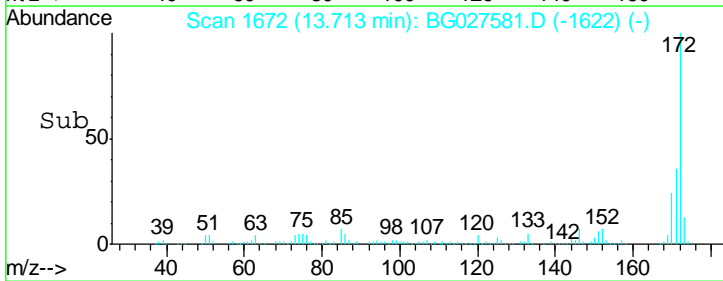
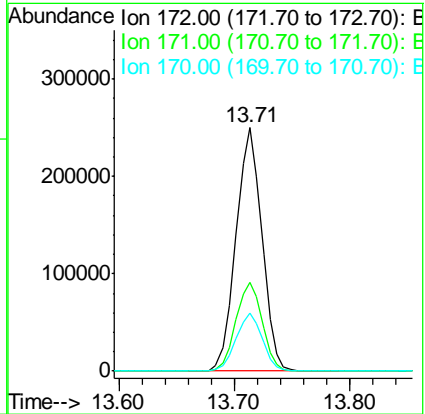
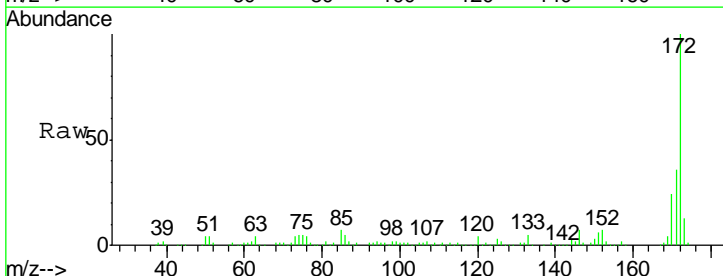
Instrument :
 BNA_G
 ClientSampleID :
 PB99860BL

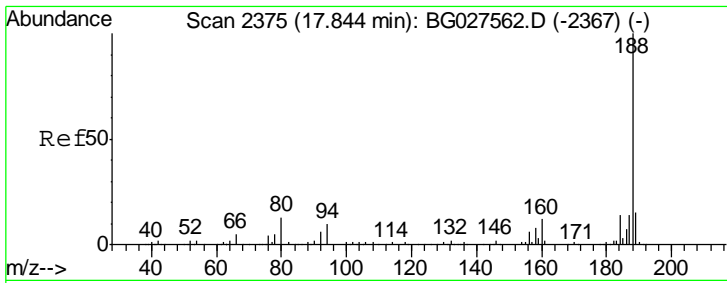
| Tgt Ion | Resp | Lower | Upper |
|---------|--------|-------|-------|
| 330 | 137854 | | |
| 332 | 96.4 | 77.3 | 115.9 |
| 141 | 41.6 | 32.1 | 48.1 |



#44
 2-Fluorobiphenyl
 Concen: 93.280 ng
 RT: 13.71 min Scan# 1672
 Delta R.T. -0.01 min
 Lab File: BG027581.D
 Acq: 22 Jun 2017 5:07

| Tgt Ion | Resp | Lower | Upper |
|---------|--------|-------|-------|
| 172 | 388376 | | |
| 171 | 36.4 | 32.2 | 48.2 |
| 170 | 23.9 | 21.8 | 32.6 |

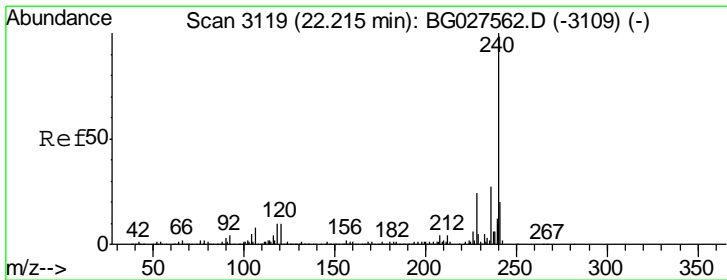
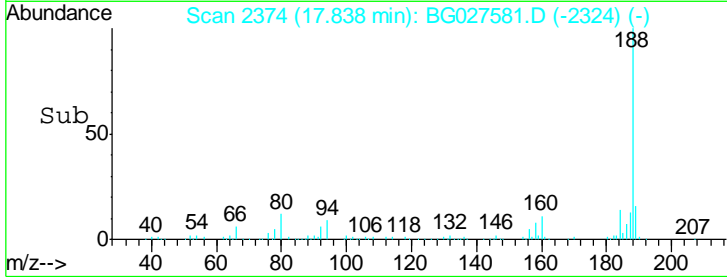
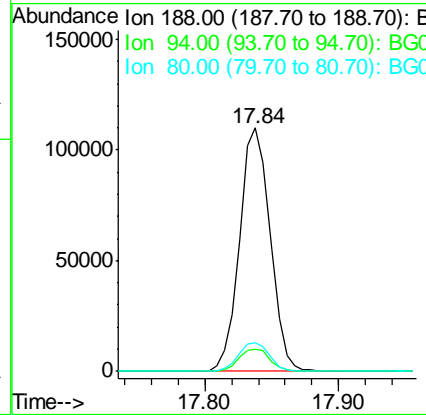
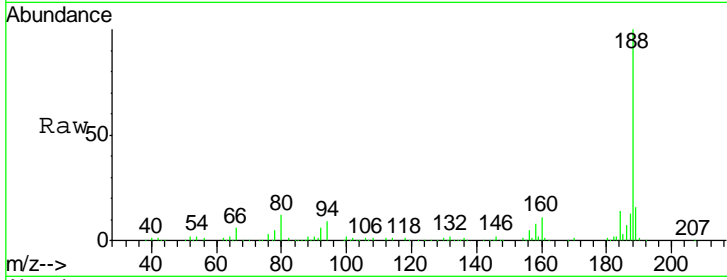




#63
 Phenanthrene-d10
 Concen: 20.000 ng
 RT: 17.84 min Scan# 2374
 Delta R.T. -0.01 min
 Lab File: BG027581.D
 Acq: 22 Jun 2017 5:07

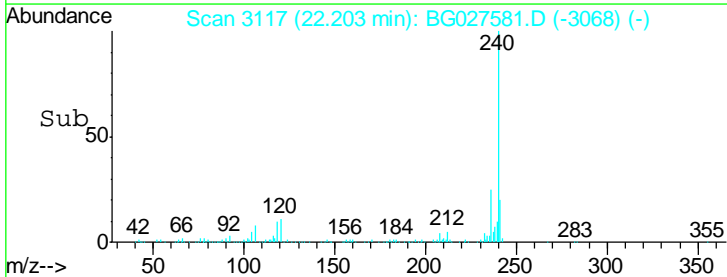
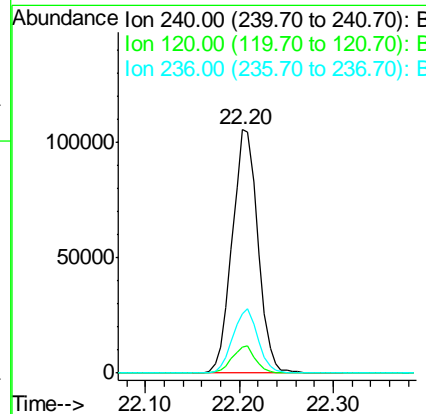
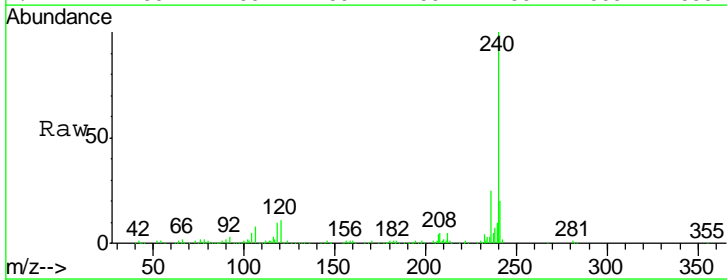
Instrument :
 BNA_G
 ClientSampled :
 PB99860BL

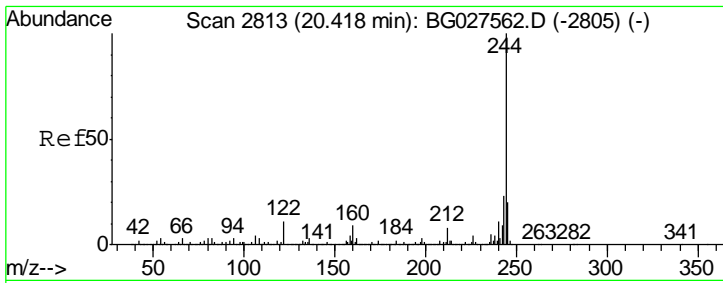
| Tgt Ion | Resp | Lower | Upper |
|---------|--------|-------|-------|
| 188 | 174561 | | |
| 94 | 100 | 5.8 | 8.8# |
| 80 | 100 | 7.5 | 11.3# |



#75
 Chrysene-d12
 Concen: 20.000 ng
 RT: 22.20 min Scan# 3117
 Delta R.T. -0.01 min
 Lab File: BG027581.D
 Acq: 22 Jun 2017 5:07

| Tgt Ion | Resp | Lower | Upper |
|---------|--------|-------|-------|
| 240 | 201498 | | |
| 120 | 100 | 5.7 | 8.5# |
| 236 | 100 | 22.2 | 33.4 |

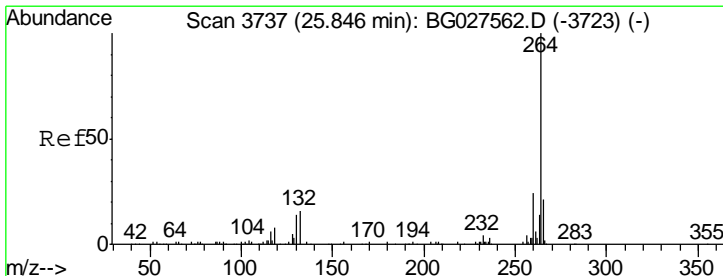
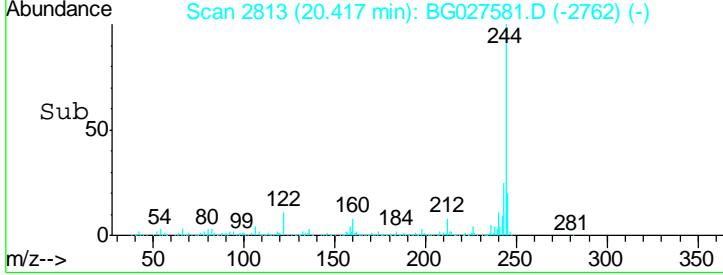
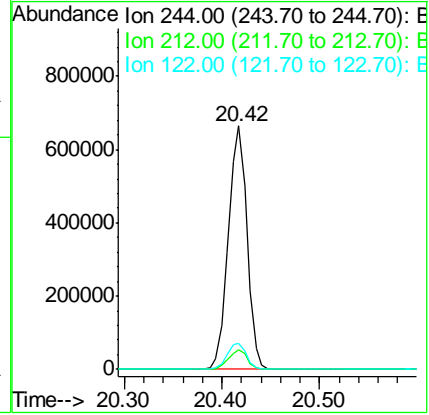
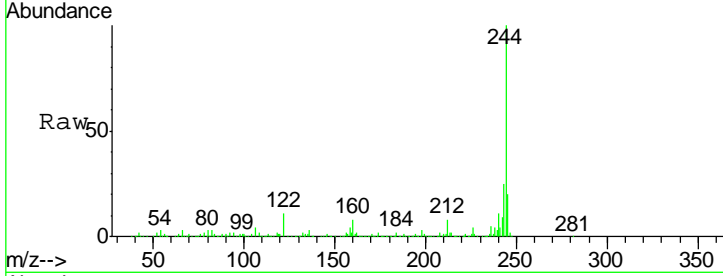




#78
 Terphenyl-d14
 Concen: 103.199 ng
 RT: 20.42 min Scan# 2813
 Delta R.T. -0.00 min
 Lab File: BG027581.D
 Acq: 22 Jun 2017 5:07

Instrument :
 BNA_G
ClientSampled :
 PB99860BL

| Tgt Ion | Resp | Lower | Upper |
|---------|------|-------|-------|
| 244 | 100 | | |
| 212 | 8.0 | 10.0 | 15.0# |
| 122 | 10.9 | 8.6 | 12.8 |



#86
 Perylene-d12
 Concen: 20.000 ng
 RT: 25.84 min Scan# 3736
 Delta R.T. -0.01 min
 Lab File: BG027581.D
 Acq: 22 Jun 2017 5:07

| Tgt Ion | Resp | Lower | Upper |
|---------|------|-------|-------|
| 264 | 100 | | |
| 260 | 26.0 | 21.8 | 32.8 |
| 265 | 22.7 | 18.2 | 27.4 |

