

Data Path : Z:\svoasrv\HPCHEM1\BNA\_G\Data\BG062124\  
 Data File : BG061632.D  
 Acq On : 21 Jun 2024 23:01  
 Operator : MA/JU  
 Sample : P2754-18  
 Misc :  
 ALS Vial : 11 Sample Multiplier: 1

**Instrument :**  
 BNA\_G  
**ClientSampleId :**  
 A4BQ4

**Manual Integrations**  
**APPROVED**  
 Reviewed By :Yogesh Patel 06/24/2024  
 Supervised By :mohammad ahmed 06/24/2024

Quant Time: Jun 21 23:36:45 2024  
 Quant Method : Z:\svoasrv\HPCHEM1\BNA\_G\Methods\SFAM-EPA-BG062024.MA.M  
 Quant Title : SVOA CALIBRATION  
 QLast Update : Fri Jun 21 05:03:55 2024  
 Response via : Initial Calibration

Compound	R.T.	QIon	Response	Conc	Units	Dev(Min)
<b>Internal Standards</b>						
1) 1,4-Dichlorobenzene-d4	8.076	152	51951	20.000	ng/ul	0.00
20) Naphthalene-d8	10.885	136	242502	20.000	ng/ul	0.00
38) Acenaphthene-d10	14.698	164	180364	20.000	ng/ul	0.00
64) Phenanthrene-d10	17.442	188	431520	20.000	ng/ul	0.00
79) Chrysene-d12	21.708	240	363265	20.000	ng/ul	0.00
88) Perylene-d12	24.933	264	444520	20.000	ng/ul	0.00
<b>System Monitoring Compounds</b>						
3) 1,4-Dioxane-d8	3.470	96	7284	5.065	ng/uL	0.00
4) Pyridine-d5	0.000	84	0d	0.000	ng/ul	
7) Phenol-d5	7.213	99	165357	29.320	ng/ul	0.00
9) Bis-(2-Chloroethyl)eth...	7.401	67	95993	27.304	ng/ul	0.00
11) 2-Chlorophenol-d4	7.601	132	113199	29.249	ng/ul	0.00
15) 4-Methylphenol-d8	8.764	113	121358	27.835	ng/ul	0.00
21) Nitrobenzene-d5	9.240	128	56255	34.165	ng/ul	0.00
24) 2-Nitrophenol-d4	9.963	143	61957	37.152	ng/ul	0.00
28) 2,4-Dichlorophenol-d3	10.491	165	127343	32.248	ng/ul	0.00
31) 4-Chloroaniline-d4	11.014	131	132704	22.197	ng/ul	0.00
46) Dimethylphthalate-d6	14.105	166	433209	31.212	ng/ul	0.00
49) Acenaphthylene-d8	14.398	160	501458	32.967	ng/ul	0.00
54) 4-Nitrophenol-d4	14.869	143	71832	30.134	ng/ul	0.00
60) Fluorene-d10	15.691	176	419932	34.560	ng/ul	0.00
65) 4,6-Dinitro-2-methylph...	15.797	200	45392	24.600	ng/ul	0.00
73) Anthracene-d10	17.542	188	669995	34.015	ng/ul	0.00
81) Pyrene-d10	19.822	212	658874	32.471	ng/ul	0.00
92) Benzo(a)pyrene-d12	24.710	264	498212	23.466	ng/ul	-0.01
<b>Target Compounds</b>						
16) Acetophenone	8.905	105	12066	1.681	ng/ul	92
72) Phenanthrene	17.483	178	71376	3.144	ng/ul	95
80) Fluoranthene	19.487	202	129604	5.505	ng/ul#	95
82) Pyrene	19.851	202	91451	3.653	ng/ul	97
85) Benzo(a)anthracene	21.690	228	58361	2.289	ng/ul	95
86) Bis(2-ethylhexyl)phtha...	21.614	149	77492	5.784	ng/ul#	90
87) Chrysene	21.749	228	57590m	2.387	ng/ul	
90) Benzo(b)fluoranthene	23.911	252	77113	2.886	ng/ul#	93
91) Benzo(k)fluoranthene	23.976	252	30225	1.100	ng/ul#	92
93) Benzo(a)pyrene	24.775	252	31094	1.209	ng/ul#	94

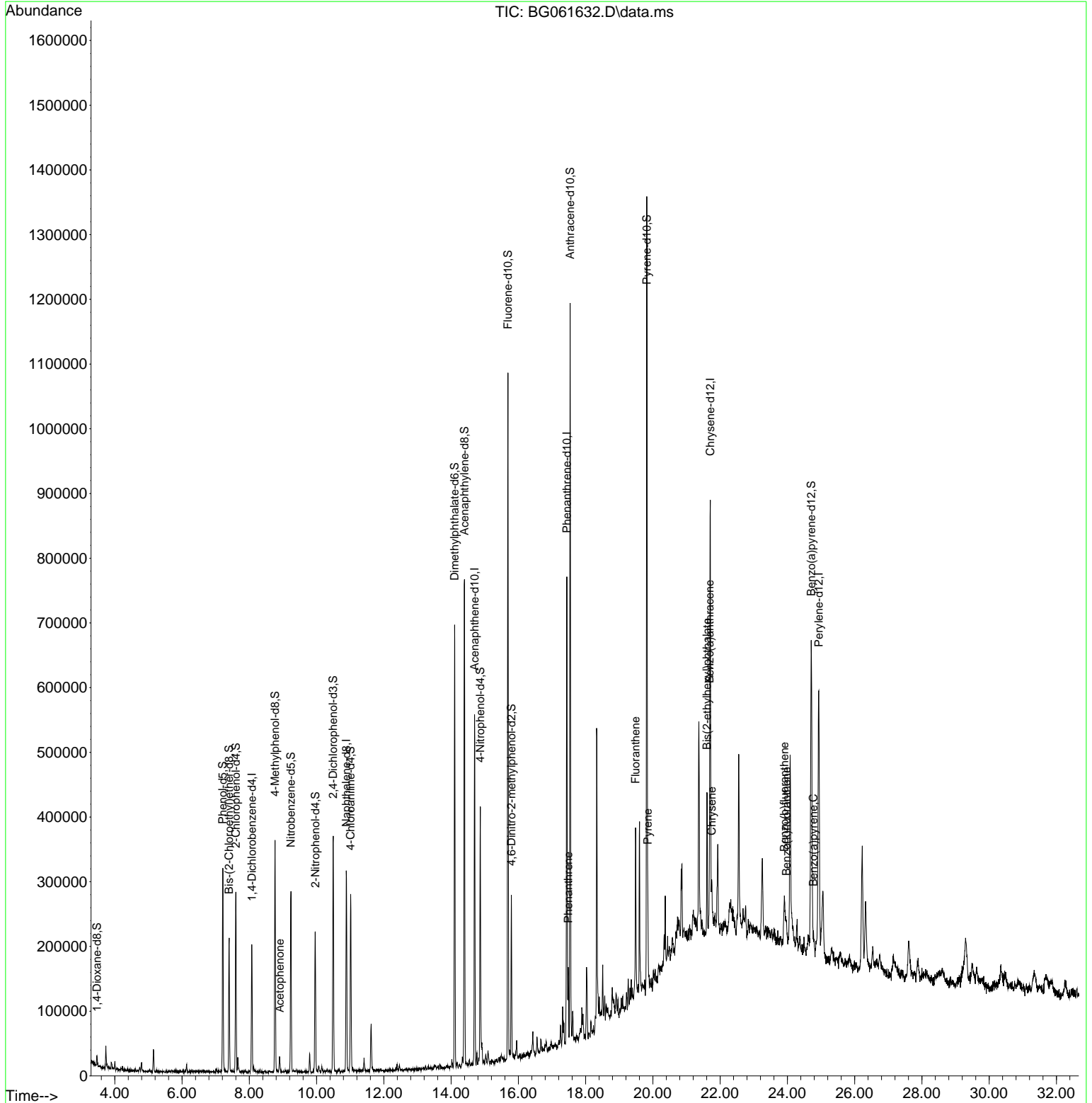
(#) = qualifier out of range (m) = manual integration (+) = signals summed

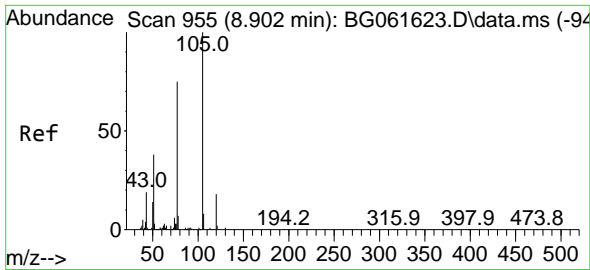
Data Path : Z:\svoasrv\HPCHEM1\BNA\_G\Data\BG062124\  
 Data File : BG061632.D  
 Acq On : 21 Jun 2024 23:01  
 Operator : MA/JU  
 Sample : P2754-18  
 Misc :  
 ALS Vial : 11 Sample Multiplier: 1

**Instrument :**  
 BNA\_G  
**ClientSampleId :**  
 A4BQ4

Quant Time: Jun 21 23:36:45 2024  
 Quant Method : Z:\svoasrv\HPCHEM1\BNA\_G\Methods\SFAM-EPA-BG062024.MA.M  
 Quant Title : SVOA CALIBRATION  
 QLast Update : Fri Jun 21 05:03:55 2024  
 Response via : Initial Calibration

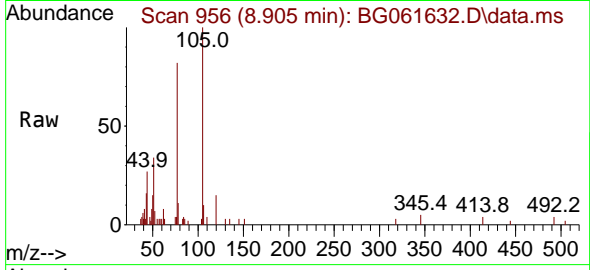
**Manual Integrations**  
**APPROVED**  
 Reviewed By :Yogesh Patel 06/24/2024  
 Supervised By :mohammad ahmed 06/24/2024





#16  
 Acetophenone  
 Concen: 1.681 ng/uI  
 RT: 8.905 min Scan# 91  
 Delta R.T. 0.006 min  
 Lab File: BG061632.D  
 Acq: 21 Jun 2024 23:01

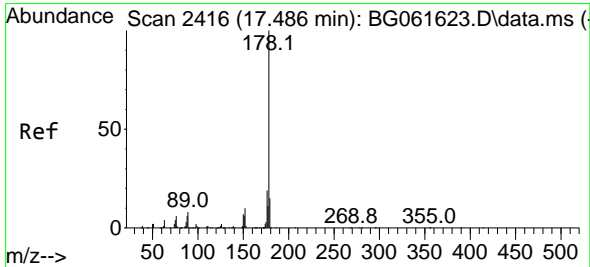
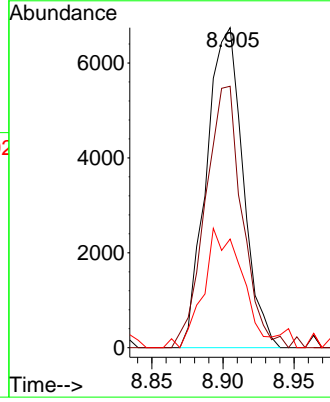
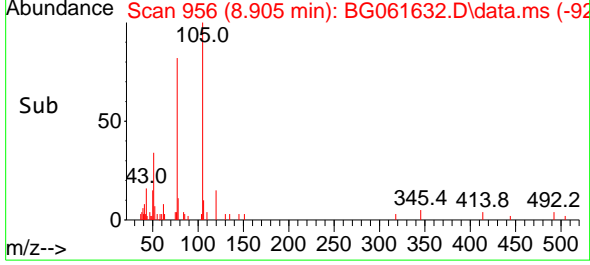
Instrument :  
 BNA\_G  
 ClientSampleId :  
 A4BQ4



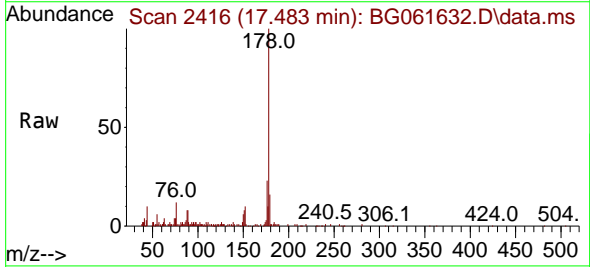
Tgt Ion:105 Resp: 1206  
 Ion Ratio Lower Upper  
 105 100  
 77 81.7 60.4 90.6  
 51 34.0 31.1 46.7

Manual Integrations  
 APPROVED

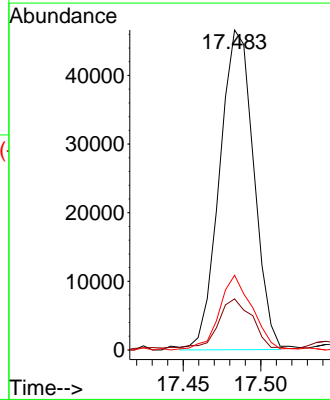
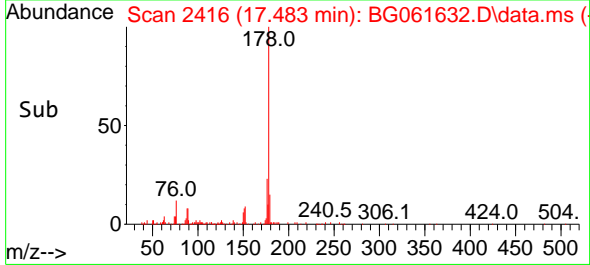
Reviewed By :Yogesh Patel 06/24/2024  
 Supervised By :mohammad ahmed 06/24/2024

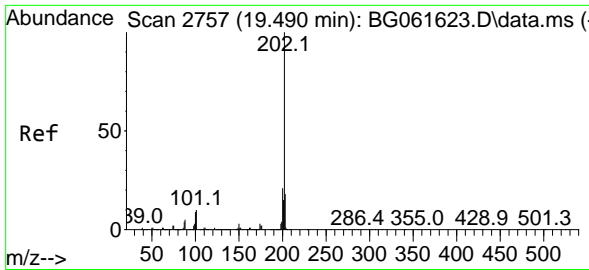


#72  
 Phenanthrene  
 Concen: 3.144 ng/uI  
 RT: 17.483 min Scan# 2416  
 Delta R.T. -0.006 min  
 Lab File: BG061632.D  
 Acq: 21 Jun 2024 23:01



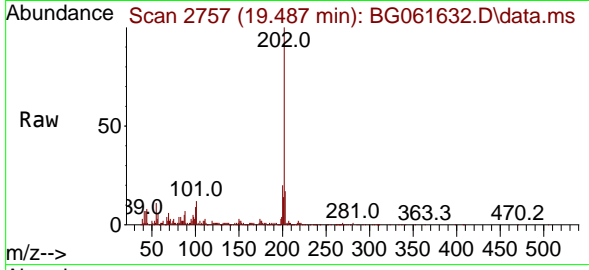
Tgt Ion:178 Resp: 71376  
 Ion Ratio Lower Upper  
 178 100  
 179 16.0 12.0 18.0  
 176 23.4 16.2 24.2





#80  
 Fluoranthene  
 Concen: 5.505 ng/u1  
 RT: 19.487 min Scan# 21  
 Delta R.T. -0.006 min  
 Lab File: BG061632.D  
 Acq: 21 Jun 2024 23:01

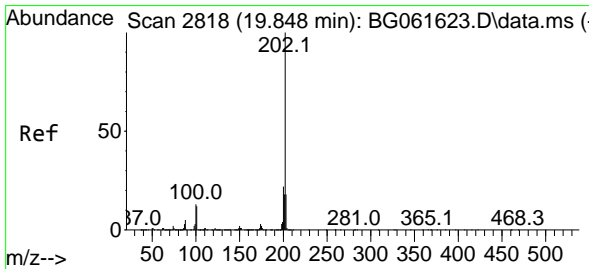
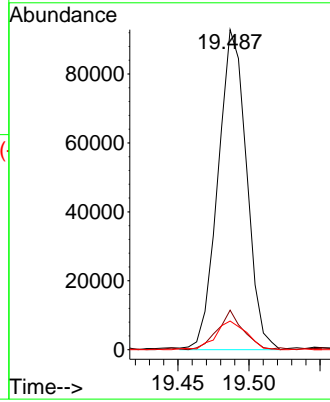
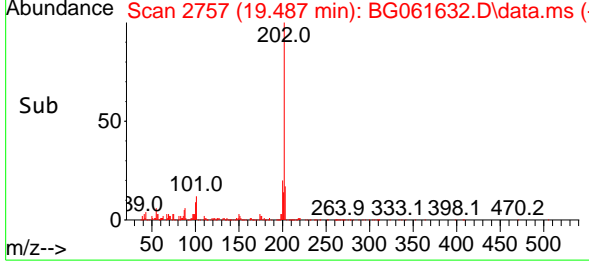
Instrument : BNA\_G  
 ClientSampleId : A4BQ4



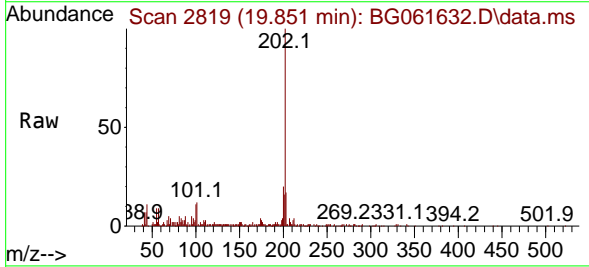
Tgt Ion:202 Resp: 129604  
 Ion Ratio Lower Upper  
 202 100  
 101 12.4 7.8 11.6  
 100 8.9 7.7 11.5

Manual Integrations  
 APPROVED

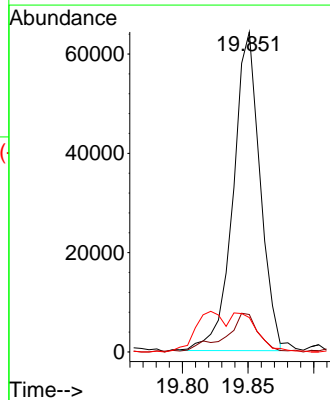
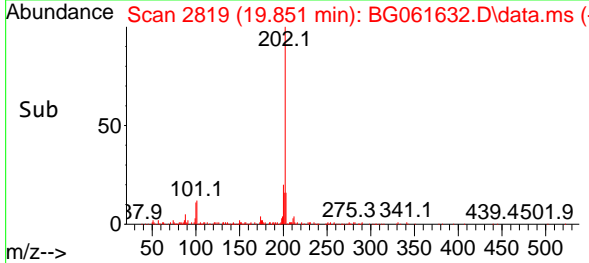
Reviewed By :Yogesh Patel 06/24/2024  
 Supervised By :mohammad ahmed 06/24/2024

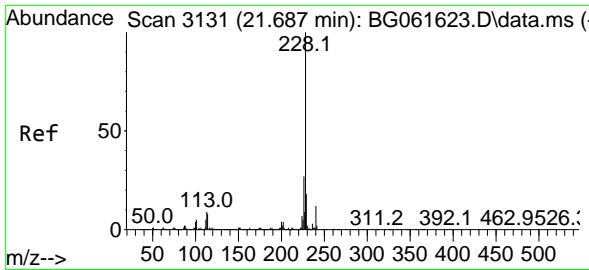


#82  
 Pyrene  
 Concen: 3.653 ng/u1  
 RT: 19.851 min Scan# 2819  
 Delta R.T. 0.000 min  
 Lab File: BG061632.D  
 Acq: 21 Jun 2024 23:01



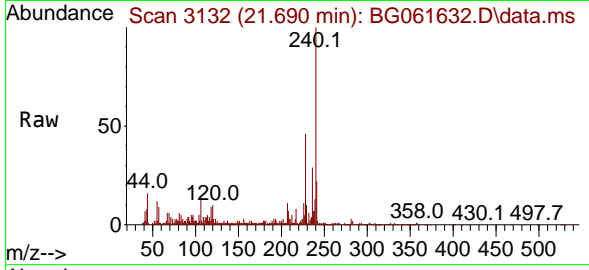
Tgt Ion:202 Resp: 91451  
 Ion Ratio Lower Upper  
 202 100  
 101 11.7 10.1 15.1  
 100 10.8 9.9 14.9





#85  
 Benzo(a)anthracene  
 Concen: 2.289 ng/uI  
 RT: 21.690 min Scan# 3119  
 Delta R.T. 0.000 min  
 Lab File: BG061632.D  
 Acq: 21 Jun 2024 23:01

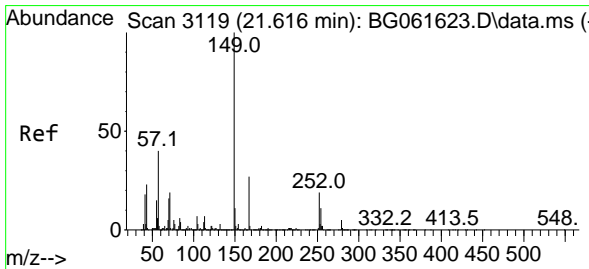
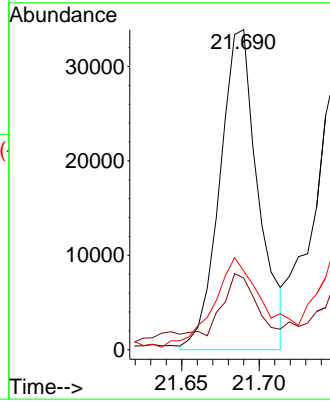
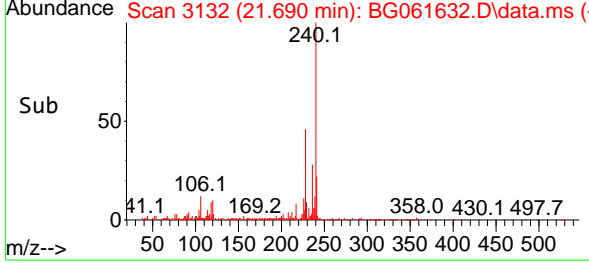
Instrument : BNA\_G  
 ClientSampleId : A4BQ4



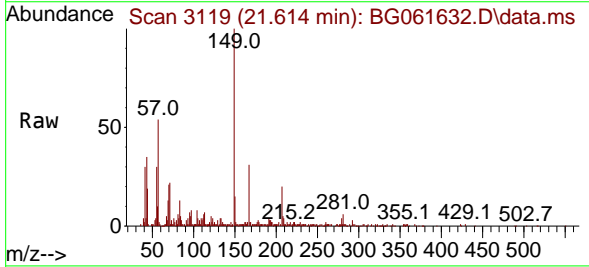
Tgt Ion: 228 Resp: 5836  
 Ion Ratio Lower Upper  
 228 100  
 229 22.4 15.8 23.8  
 226 24.6 21.4 32.2

Manual Integrations  
 APPROVED

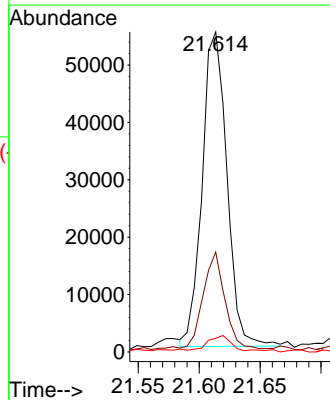
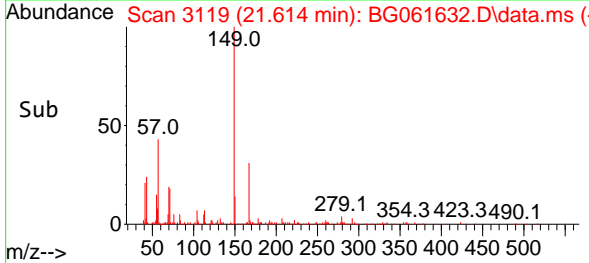
Reviewed By : Yogesh Patel 06/24/2024  
 Supervised By : mohammad ahmed 06/24/2024

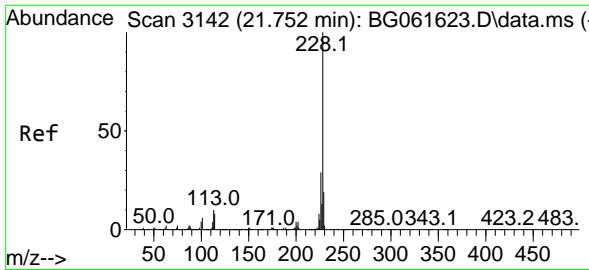


#86  
 Bis(2-ethylhexyl)phthalate  
 Concen: 5.784 ng/uI  
 RT: 21.614 min Scan# 3119  
 Delta R.T. -0.012 min  
 Lab File: BG061632.D  
 Acq: 21 Jun 2024 23:01



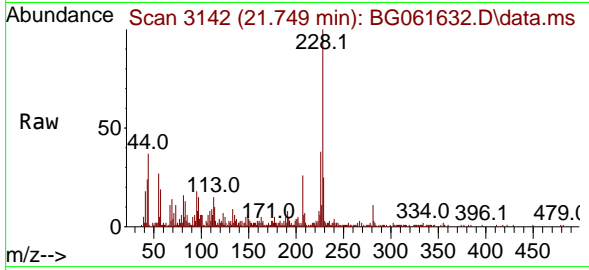
Tgt Ion: 149 Resp: 77492  
 Ion Ratio Lower Upper  
 149 100  
 167 31.2 20.5 30.7#  
 279 4.3 2.9 4.3





#87  
 Chrysene  
 Concen: 2.387 ng/ul m  
 RT: 21.749 min Scan# 3142  
 Delta R.T. -0.012 min  
 Lab File: BG061632.D  
 Acq: 21 Jun 2024 23:01

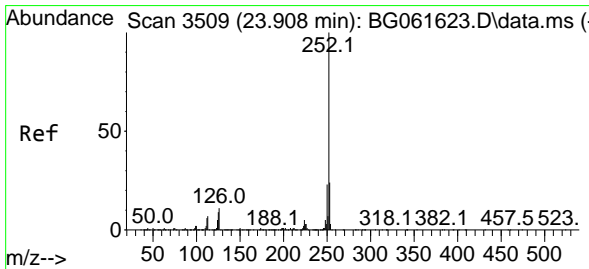
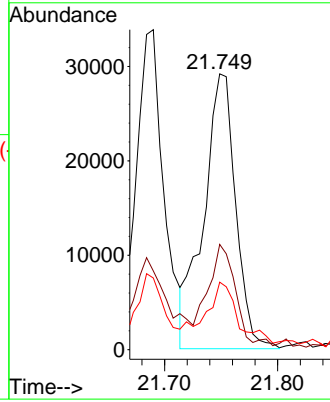
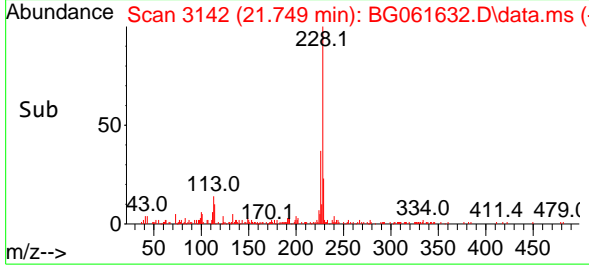
Instrument :  
 BNA\_G  
 ClientSampleId :  
 A4BQ4



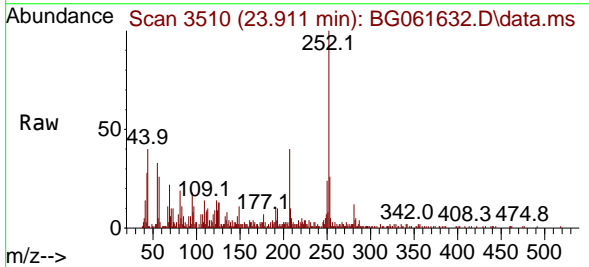
Tgt Ion:228 Resp: 57590  
 Ion Ratio Lower Upper  
 228 100  
 226 38.2 24.2 36.2  
 229 24.5 16.5 24.7

Manual Integrations  
 APPROVED

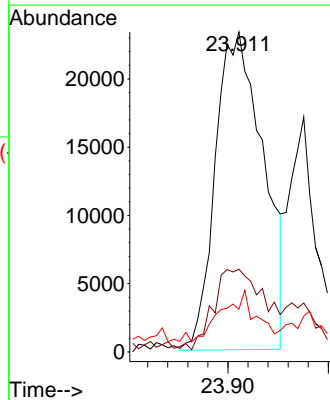
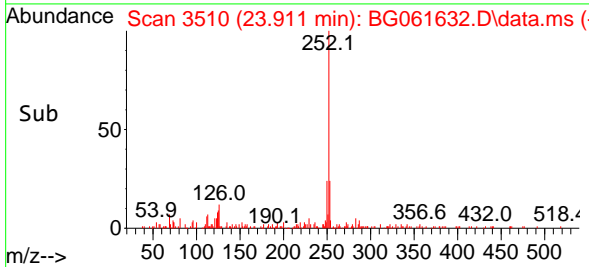
Reviewed By :Yogesh Patel 06/24/2024  
 Supervised By :mohammad ahmed 06/24/2024

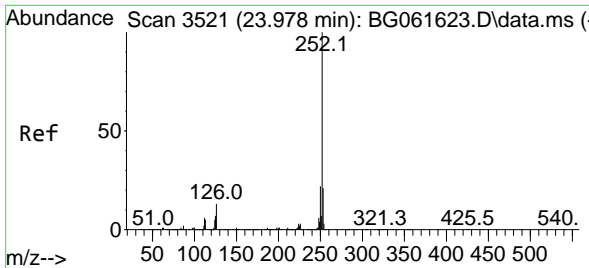


#90  
 Benzo(b)fluoranthene  
 Concen: 2.886 ng/ul  
 RT: 23.911 min Scan# 3510  
 Delta R.T. -0.006 min  
 Lab File: BG061632.D  
 Acq: 21 Jun 2024 23:01



Tgt Ion:252 Resp: 77113  
 Ion Ratio Lower Upper  
 252 100  
 253 25.9 18.6 27.8  
 125 13.4 7.0 10.6#





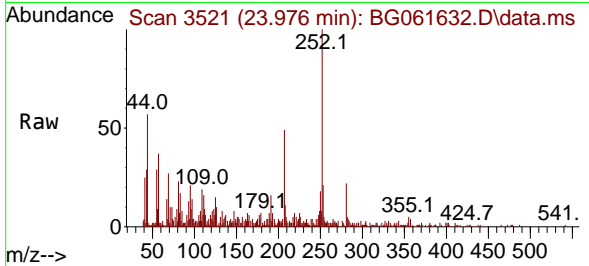
#91  
 Benzo(k)fluoranthene  
 Concen: 1.100 ng/u1  
 RT: 23.976 min Scan# 3521  
 Delta R.T. -0.006 min  
 Lab File: BG061632.D  
 Acq: 21 Jun 2024 23:01

Instrument :

BNA\_G

ClientSampleId :

A4BQ4



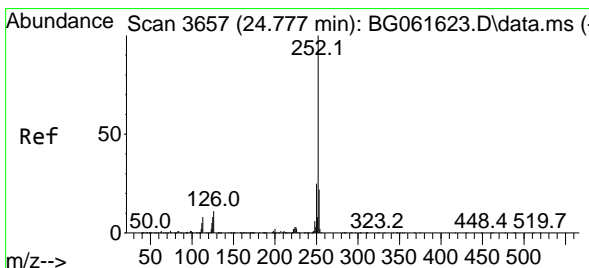
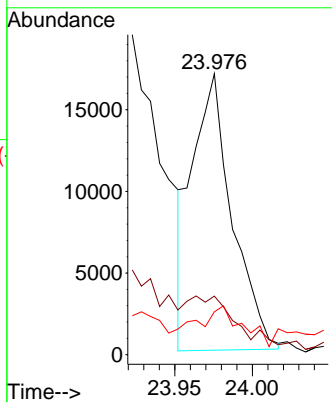
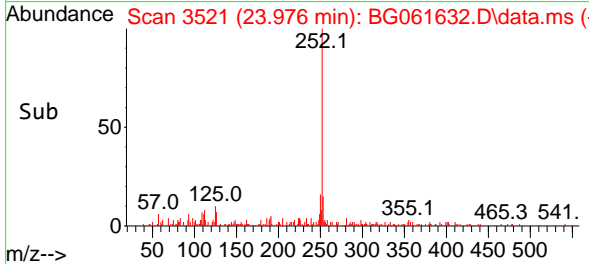
Tgt Ion:252 Resp: 30224  
 Ion Ratio Lower Upper  
 252 100  
 253 20.8 17.8 26.6  
 125 15.3 6.2 9.2

Manual Integrations

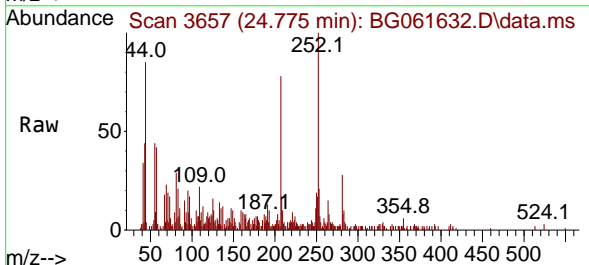
APPROVED

Reviewed By :Yogesh Patel 06/24/2024

Supervised By :mohammad ahmed 06/24/2024



#93  
 Benzo(a)pyrene  
 Concen: 1.209 ng/u1  
 RT: 24.775 min Scan# 3657  
 Delta R.T. -0.017 min  
 Lab File: BG061632.D  
 Acq: 21 Jun 2024 23:01



Tgt Ion:252 Resp: 31094  
 Ion Ratio Lower Upper  
 252 100  
 253 20.9 16.8 25.2  
 125 15.8 6.5 9.7#

