

Data Path : Z:\SVOASRV\HPCHEM1\BNA G\DATA\BG062220\
 Data File : BG045822.D
 Acq On : 22 Jun 2020 11:00
 Operator : CG/JU
 Sample : PB129622BL
 Misc :
 ALS Vial : 3 Sample Multiplier: 1

Instrument :
 BNA_G
 ClientSampleId :
 PB129622BL

Integration Parameters: rteint.p
 Integrator: RTE
 Smoothing : ON Filtering: 5
 Sampling : 1 Min Area: 3 % of largest Peak
 Start Thrs: 0.2 Max Peaks: 100
 Stop Thrs : 0 Peak Location: TOP

If leading or trailing edge < 100 prefer < Baseline drop else tangent >
 Peak separation: 5

Method : Z:\SVOASRV\HPCHEM1\BNA G\METHODS\8270-BG061520.M
 Title : ASP BNA STANDARDS FOR 5 POINT CALIBRATION

Signal : TIC

peak #	R.T. min	first scan	max scan	last scan	PK TY	peak height	corr. area	corr. % max.	% of total
1	5.520	408	414	428	rBV	780723	1385670	30.69%	7.547%
2	7.141	682	690	703	rBV	822471	1495691	33.12%	8.146%
3	7.917	815	822	831	rBV	175071	318576	7.05%	1.735%
4	8.240	869	877	892	rBV	720765	1316433	29.15%	7.170%
5	9.080	1010	1020	1032	rBV	542347	1032917	22.87%	5.625%
6	10.725	1289	1300	1315	rBV	215398	428256	9.48%	2.332%
7	13.186	1711	1719	1731	rBV	1595132	2547643	56.42%	13.875%
8	14.567	1946	1954	1968	rBV	368404	626579	13.88%	3.412%
9	16.064	2202	2209	2230	rBV	1247666	2067412	45.78%	11.260%
10	17.316	2415	2422	2435	rBV	484011	783614	17.35%	4.268%
11	19.936	2861	2868	2882	rBV	3402522	4515692	100.00%	24.593%
12	21.575	3140	3147	3156	rBV	534898	936205	20.73%	5.099%
13	24.700	3669	3679	3690	rBV2	310973	906788	20.08%	4.939%

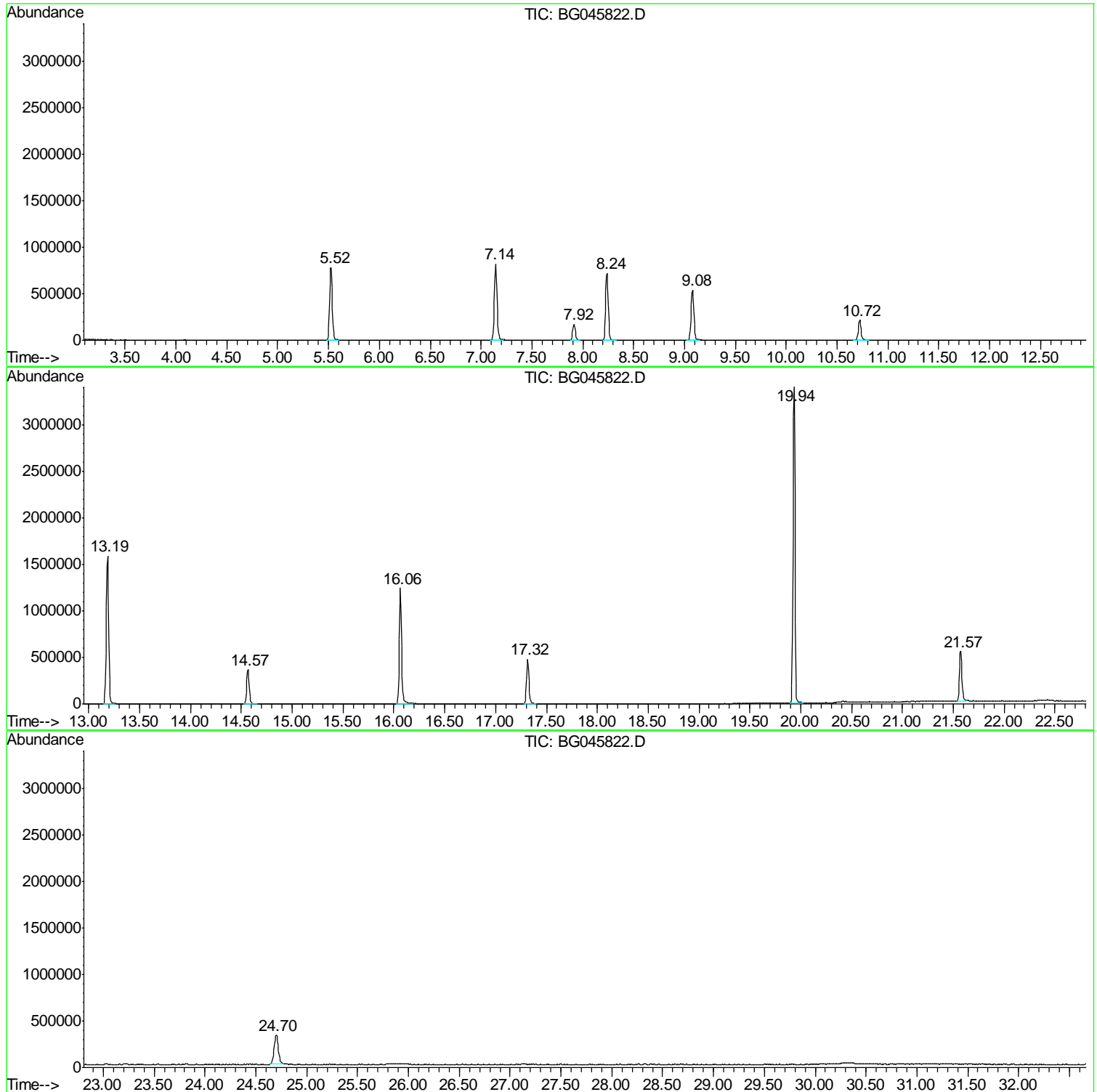
Sum of corrected areas: 18361476

Data Path : Z:\SVOASRV\HPCHEM1\BNA G\DATA\BG062220\
Data File : BG045822.D
Acq On : 22 Jun 2020 11:00
Operator : CG/JU
Sample : PB129622BL
Misc :
ALS Vial : 3 Sample Multiplier: 1

Instrument :
BNA_G
ClientSampleId :
PB129622BL

Quant Method : Z:\SVOASRV\HPCHEM1\BNA G\METHODS\8270-BG061520.M
Quant Title : ASP BNA STANDARDS FOR 5 POINT CALIBRATION

TIC Library : C:\Database\NIST11.L
TIC Integration Parameters: LSCINT.P



Data Path : Z:\SVOASRV\HPCHEM1\BNA_G\DATA\BG062220\
Data File : BG045822.D
Acq On : 22 Jun 2020 11:00
Operator : CG/JU
Sample : PB129622BL
Misc :
ALS Vial : 3 Sample Multiplier: 1

Instrument :
BNA_G
ClientSampleId :
PB129622BL

Quant Method : Z:\SVOASRV\HPCHEM1\BNA_G\METHODS\8270-BG061520.M
Quant Title : ASP BNA STANDARDS FOR 5 POINT CALIBRATION

TIC Library : C:\Database\NIST11.L
TIC Integration Parameters: LSCINT.P

No Library Search Compounds Detected

Data Path : Z:\SVOASRV\HPCHEM1\BNA_G\DATA\BG062220\
Data File : BG045822.D
Acq On : 22 Jun 2020 11:00
Operator : CG/JU
Sample : PB129622BL
Misc :
ALS Vial : 3 Sample Multiplier: 1

Instrument :
BNA_G
ClientSampleId :
PB129622BL

Quant Method : Z:\SVOASRV\HPCHEM1\BNA_G\METHODS\8270-BG061520.M
Quant Title : ASP BNA STANDARDS FOR 5 POINT CALIBRATION

TIC Library : C:\Database\NIST11.L
TIC Integration Parameters: LSCINT.P

TIC Top Hit name	RT	EstConc	Units	Response	--Internal Standard--			
					#	RT	Resp	Conc
