

Data Path : Z:\svoasrv\HPCHEM1\BNA_G\Data\BG062221\
 Data File : BG049053.D
 Acq On : 22 Jun 2021 23:24
 Operator : CG/JU
 Sample : PB137244BL
 Misc :
 ALS Vial : 16 Sample Multiplier: 1

Instrument :
 BNA_G
 ClientSampleId :
 PB137244BL

Integration Parameters: rteint.p
 Integrator: RTE
 Smoothing : ON Filtering: 5
 Sampling : 1 Min Area: 3 % of largest Peak
 Start Thrs: 0.2 Max Peaks: 100
 Stop Thrs : 0 Peak Location: TOP

If leading or trailing edge < 100 prefer < Baseline drop else tangent >
 Peak separation: 5

Method : Z:\SVOASRV\HPCHEM1\BNA_G\METHODS\8270-BG061121.M
 Title : ASP BNA STANDARDS FOR 5 POINT CALIBRATION

Signal : TIC: BG049053.D\data.ms

peak #	R.T. min	first scan	max scan	last scan	PK TY	peak height	corr. area	corr. % max.	% of total
1	5.665	438	447	462	rBV	699447	1170843	38.51%	9.519%
2	7.263	711	719	728	rBV	693720	1214240	39.94%	9.872%
3	8.109	855	863	871	rVB	127007	219778	7.23%	1.787%
4	9.272	1053	1061	1070	rBV	423302	787956	25.92%	6.406%
5	10.929	1334	1343	1352	rBV	158072	292269	9.61%	2.376%
6	13.373	1752	1759	1766	rBV	1123156	1731125	56.94%	14.074%
7	14.748	1984	1993	2000	rBV	261748	415138	13.66%	3.375%
8	16.235	2240	2246	2260	rBV	1007457	1595773	52.49%	12.974%
9	17.498	2454	2461	2470	rVB	350190	545067	17.93%	4.431%
10	20.107	2899	2905	2912	rBV	2331822	3040060	100.00%	24.716%
11	20.682	2994	3003	3005	rBV10	15860	37415	1.23%	0.304%
12	21.787	3184	3191	3199	rVB	368835	614726	20.22%	4.998%
13	25.112	3746	3757	3776	rVB2	206644	635817	20.91%	5.169%

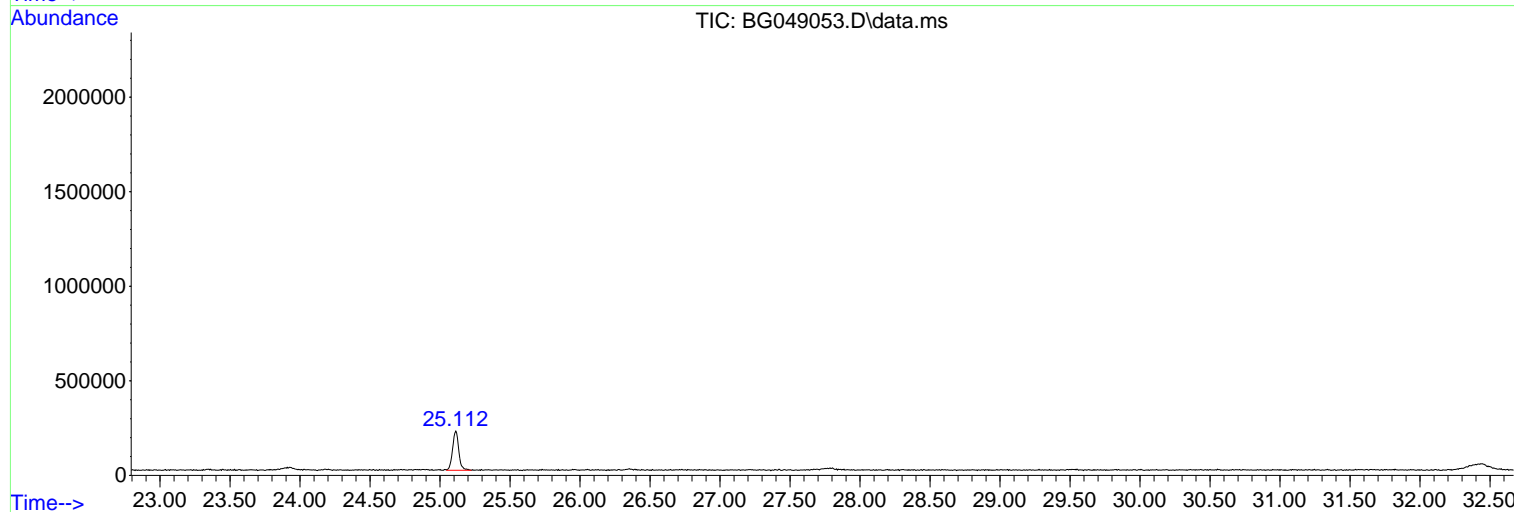
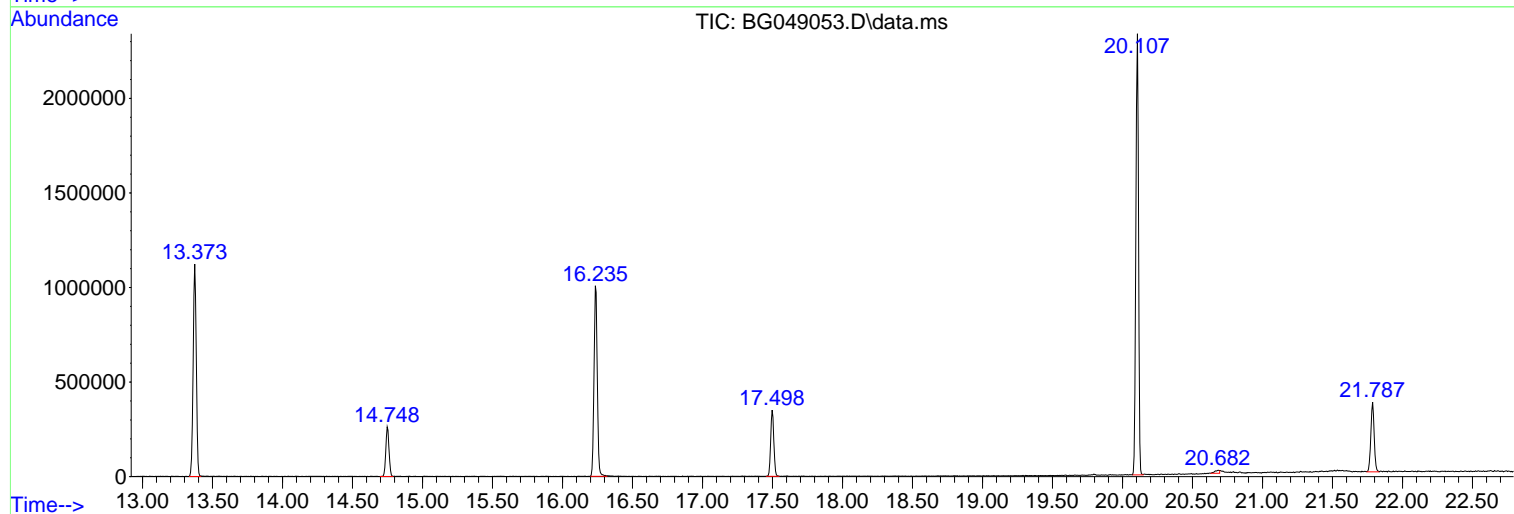
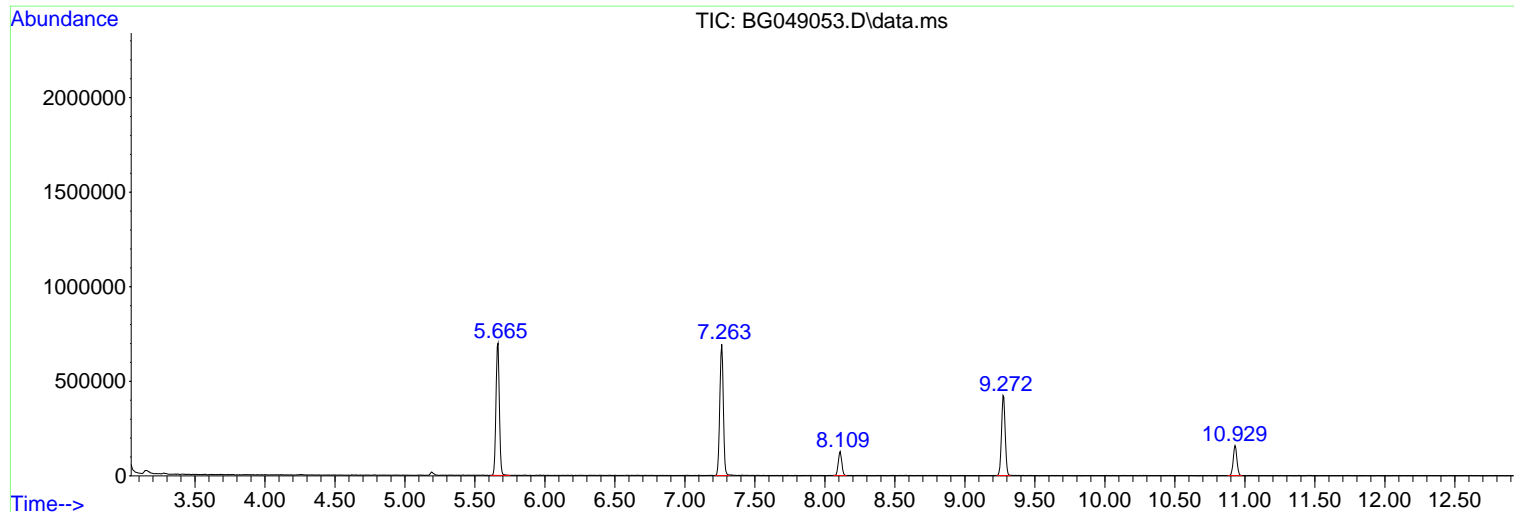
Sum of corrected areas: 12300207

Data Path : Z:\svoasrv\HPCHEM1\BNA_G\Data\BG062221\
Data File : BG049053.D
Acq On : 22 Jun 2021 23:24
Operator : CG/JU
Sample : PB137244BL
Misc :
ALS Vial : 16 Sample Multiplier: 1

Instrument :
BNA_G
ClientSampleId :
PB137244BL

Quant Method : Z:\SVOASRV\HPCHEM1\BNA_G\METHODS\8270-BG061121.M
Quant Title : ASP BNA STANDARDS FOR 5 POINT CALIBRATION

TIC Library : C:\Database\NIST11.L
TIC Integration Parameters: LSCINT.P



Library Search Compound Report

Data Path : Z:\svoasrv\HPCHEM1\BNA_G\Data\BG062221\
Data File : BG049053.D
Acq On : 22 Jun 2021 23:24
Operator : CG/JU
Sample : PB137244BL
Misc :
ALS Vial : 16 Sample Multiplier: 1

Instrument :
BNA_G
ClientSampleId :
PB137244BL

Quant Method : Z:\SVOASRV\HPCHEM1\BNA_G\METHODS\8270-BG061121.M
Quant Title : ASP BNA STANDARDS FOR 5 POINT CALIBRATION

TIC Library : C:\Database\NIST11.L
TIC Integration Parameters: LSCINT.P

No Library Search Compounds Detected

Data Path : Z:\svoasrv\HPCHEM1\BNA_G\Data\BG062221\
Data File : BG049053.D
Acq On : 22 Jun 2021 23:24
Operator : CG/JU
Sample : PB137244BL
Misc :
ALS Vial : 16 Sample Multiplier: 1

Instrument :
BNA_G
ClientSampleId :
PB137244BL

Quant Method : Z:\SVOASRV\HPCHEM1\BNA_G\METHODS\8270-BG061121.M
Quant Title : ASP BNA STANDARDS FOR 5 POINT CALIBRATION

TIC Library : C:\Database\NIST11.L
TIC Integration Parameters: LSCINT.P

TIC Top Hit name	RT	EstConc	Units	Response	#	RT	Resp	Conc
------------------	----	---------	-------	----------	---	----	------	------

|--Internal Standard--|