

Data Path : Z:\HPCHEM1\BNA G\DATA\BG062316\
 Data File : BG022508.D
 Acq On : 23 Jun 2016 7:09
 Operator : UM/SJ
 Sample : H3623-03
 Misc :
 ALS Vial : 9 Sample Multiplier: 1

Instrument :
 BNA_G
 ClientSampleId :

Quant Time: Jun 23 07:52:08 2016
 Quant Method : Z:\HPCHEM1\BNA G\METHODS\8270-BG060616.M
 Quant Title : ASP BNA STANDARDS FOR 5 POINT CALIBRATION
 QLast Update : Wed Jun 22 01:27:56 2016
 Response via : Initial Calibration

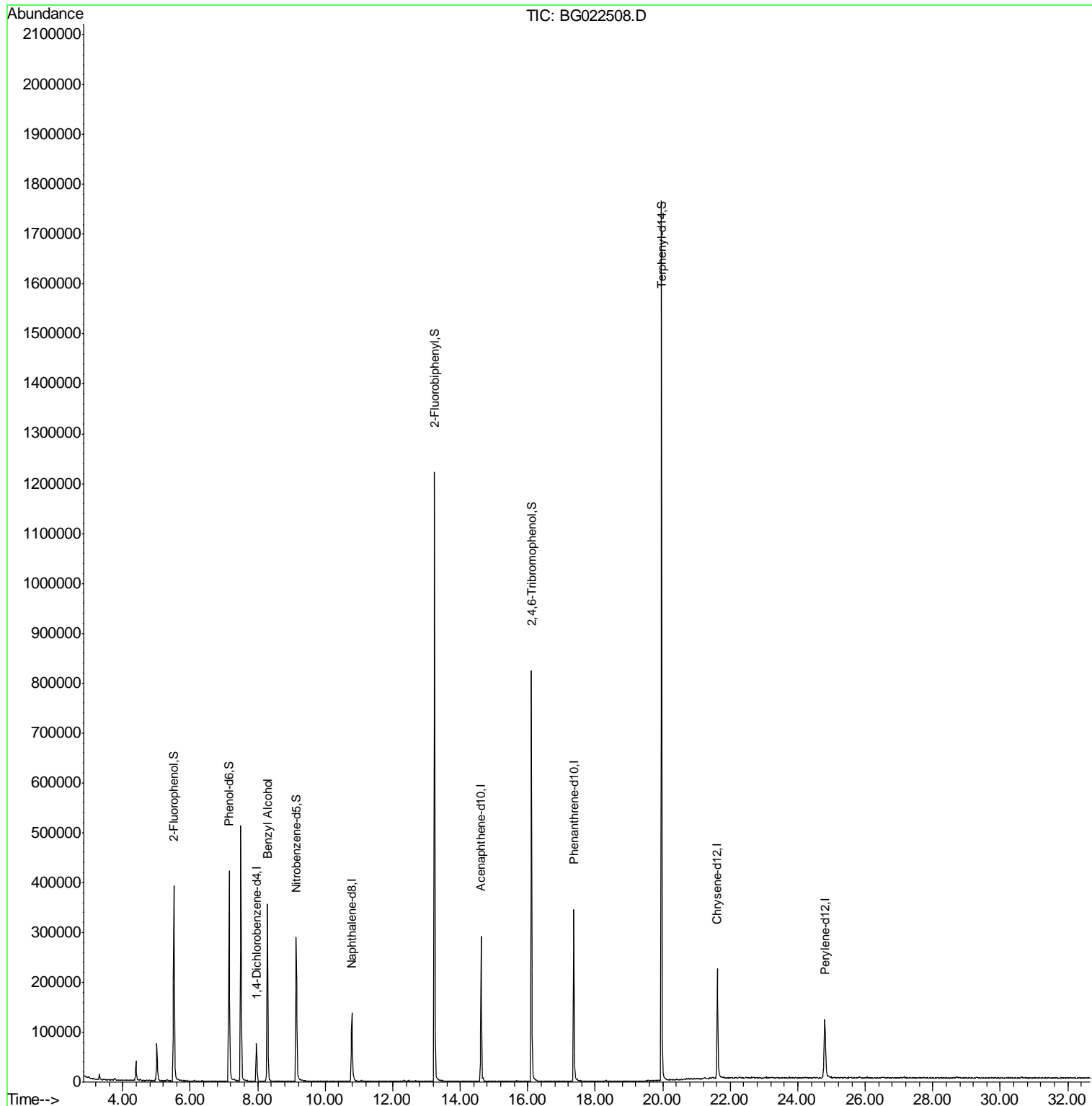
Internal Standards	R.T.	QIon	Response	Conc	Units	Dev(Min)
1) 1,4-Dichlorobenzene-d4	7.97	152	27331	20.00	ng	-0.02
21) Naphthalene-d8	10.79	136	161615	20.00	ng	-0.02
38) Acenaphthene-d10	14.62	164	110895	20.00	ng	-0.01
63) Phenanthrene-d10	17.36	188	237156	20.00	ng	-0.02
75) Chrysene-d12	21.62	240	145339	20.00	ng	-0.02
86) Perylene-d12	24.80	264	123321	20.00	ng	-0.04
System Monitoring Compounds						
5) 2-Fluorophenol	5.51	112	271835	192.30	ng	-0.03
7) Phenol-d6	7.15	99	388467	174.79	ng	-0.03
23) Nitrobenzene-d5	9.14	82	237714	102.55	ng	-0.02
41) 2,4,6-Tribromophenol	16.11	330	163882	130.79	ng	-0.02
44) 2-Fluorobiphenyl	13.24	172	695908	95.63	ng	-0.01
78) Terphenyl-d14	19.96	244	805461	131.57	ng	-0.01
Target Compounds						
15) Benzyl Alcohol	8.28	79	2998	2.09	ng	# 51

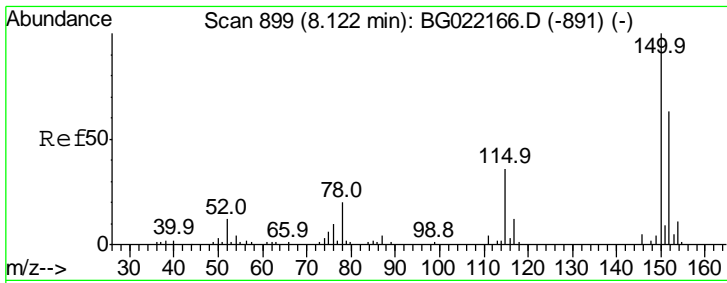
(#) = qualifier out of range (m) = manual integration (+) = signals summed

Data Path : Z:\HPCHEM1\BNA G\DATA\BG062316\
 Data File : BG022508.D
 Acq On : 23 Jun 2016 7:09
 Operator : UM/SJ
 Sample : H3623-03
 Misc :
 ALS Vial : 9 Sample Multiplier: 1

Instrument :
 BNA_G
 ClientSampleId :

Quant Time: Jun 23 07:52:08 2016
 Quant Method : Z:\HPCHEM1\BNA G\METHODS\8270-BG060616.M
 Quant Title : ASP BNA STANDARDS FOR 5 POINT CALIBRATION
 QLast Update : Wed Jun 22 01:27:56 2016
 Response via : Initial Calibration

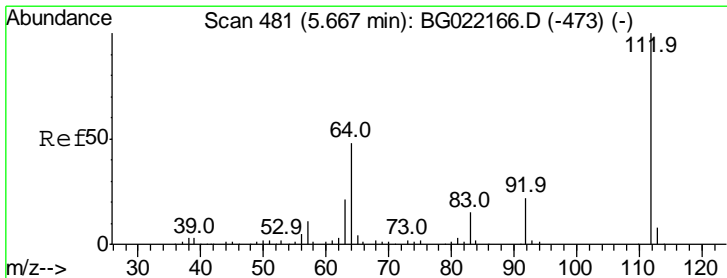
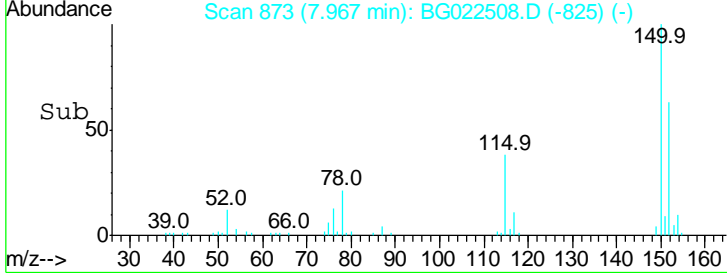
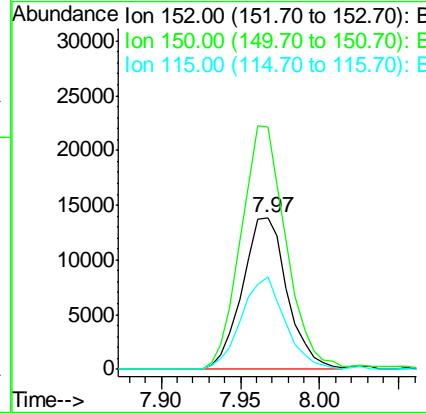
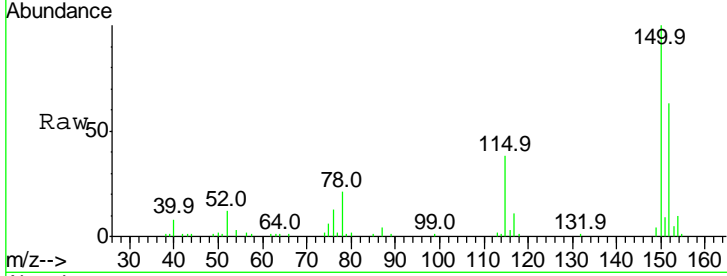




#1
 1,4-Dichlorobenzene-d4
 Concen: 20.00 ng
 RT: 7.97 min Scan# 873
 Delta R.T. -0.02 min
 Lab File: BG022508.D
 Acq: 23 Jun 2016 7:09

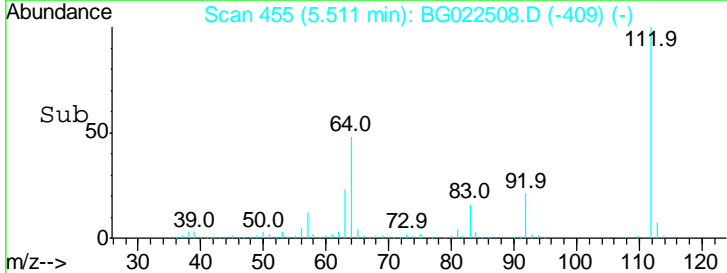
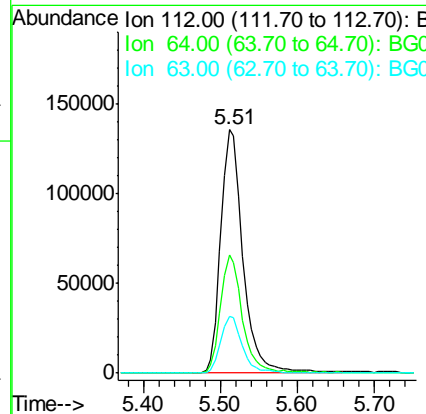
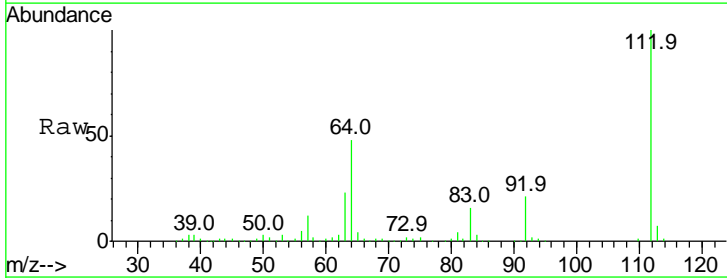
Instrument :
 BNA_G
 ClientSampled :

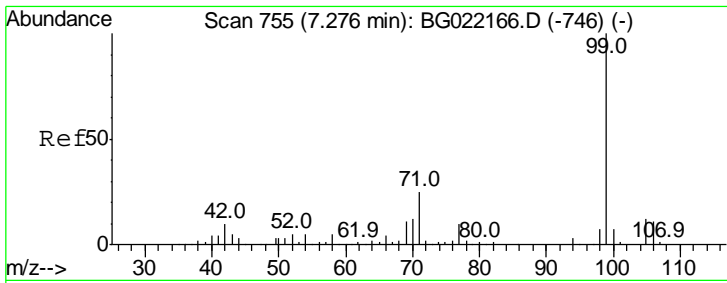
Tgt Ion	Resp	Lower	Upper
152	27331		
150	159.8	130.1	195.1
115	60.6	62.2	93.2#



#5
 2-Fluorophenol
 Concen: 192.30 ng
 RT: 5.51 min Scan# 455
 Delta R.T. -0.03 min
 Lab File: BG022508.D
 Acq: 23 Jun 2016 7:09

Tgt Ion	Resp	Lower	Upper
112	271835		
112	100		
64	48.4	51.1	76.7#
63	23.4	24.6	37.0#

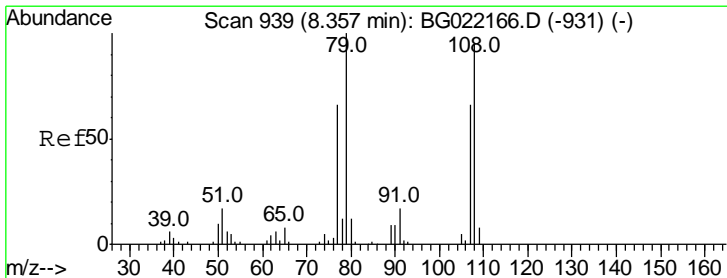
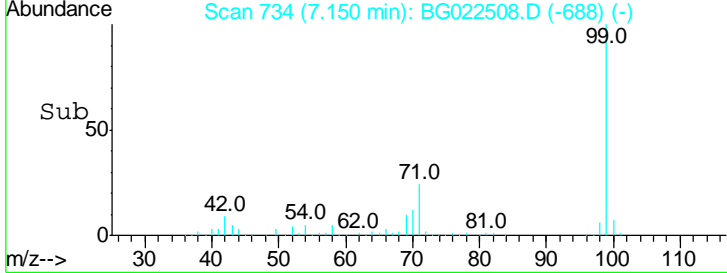
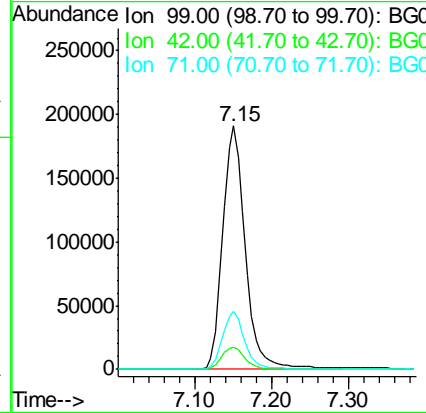
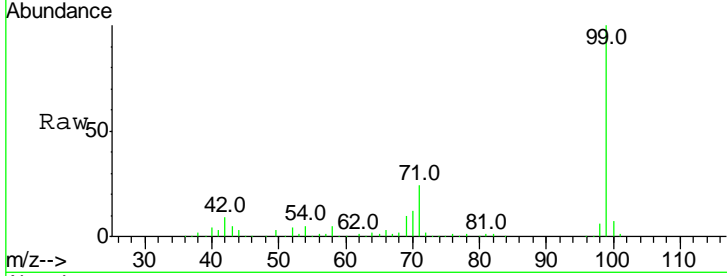




#7
 Phenol-d6
 Concen: 174.79 ng
 RT: 7.15 min Scan# 734
 Delta R.T. -0.03 min
 Lab File: BG022508.D
 Acq: 23 Jun 2016 7:09

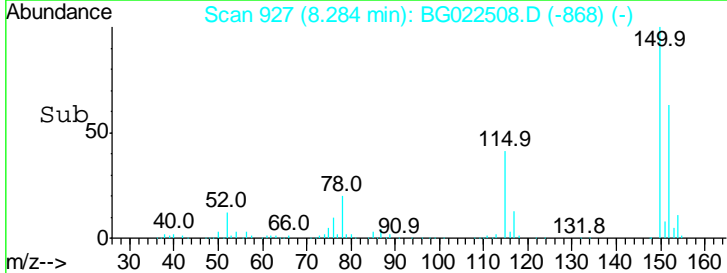
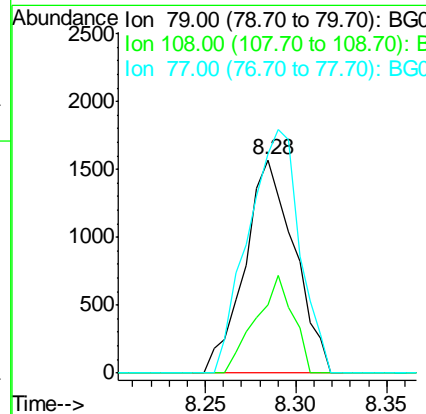
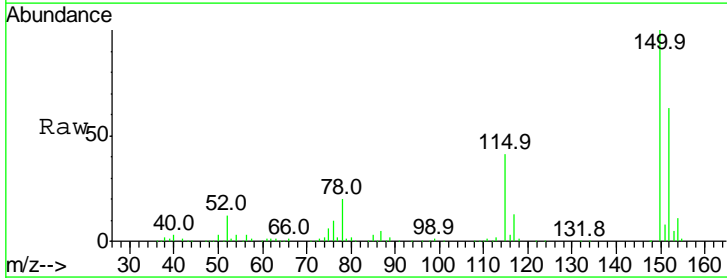
Instrument :
 BNA_G
 ClientSampled :

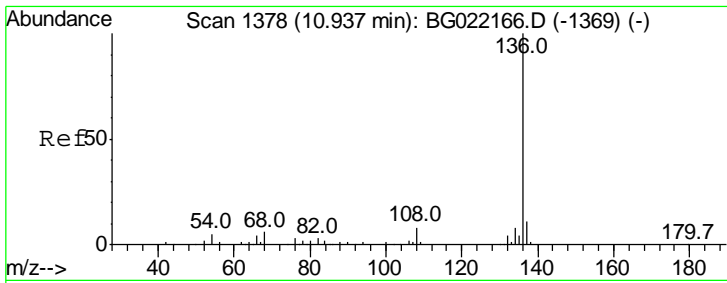
Tgt Ion	Resp	Lower	Upper
99	100		
42	9.0	16.4	24.6#
71	23.9	25.0	37.4#



#15
 Benzyl Alcohol
 Concen: 2.09 ng
 RT: 8.28 min Scan# 927
 Delta R.T. 0.05 min
 Lab File: BG022508.D
 Acq: 23 Jun 2016 7:09

Tgt Ion	Resp	Lower	Upper
79	100		
108	32.1	59.4	89.0#
77	102.7	52.2	78.2#



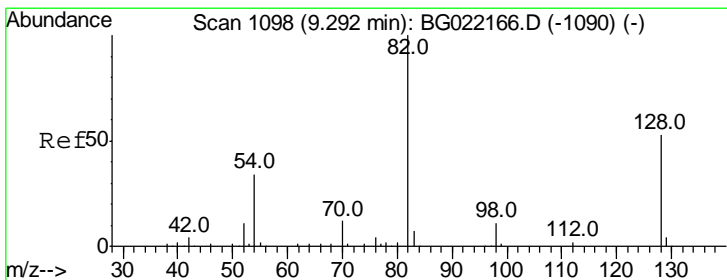
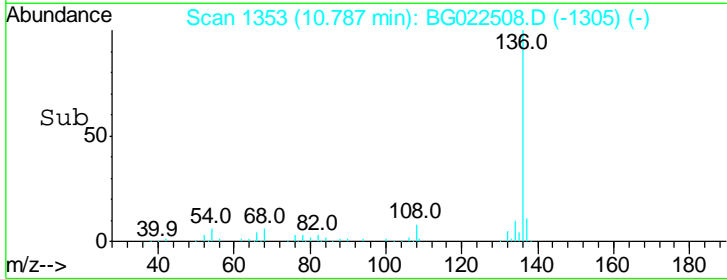
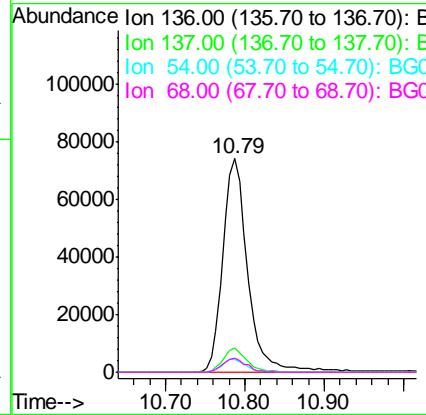
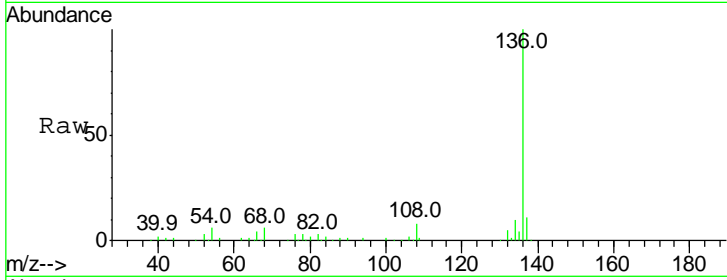


#21
 Naphthalene-d8
 Concen: 20.00 ng
 RT: 10.79 min Scan# 1353
 Delta R.T. -0.02 min
 Lab File: BG022508.D
 Acq: 23 Jun 2016 7:09

Instrument :
 BNA_G
 ClientSampled :

Tgt Ion: 136 Resp: 161615

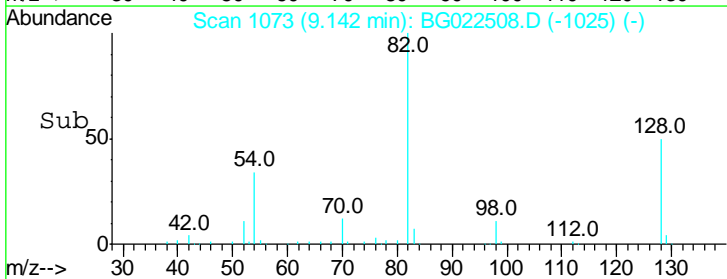
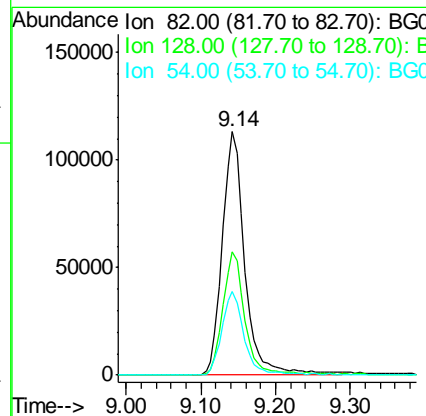
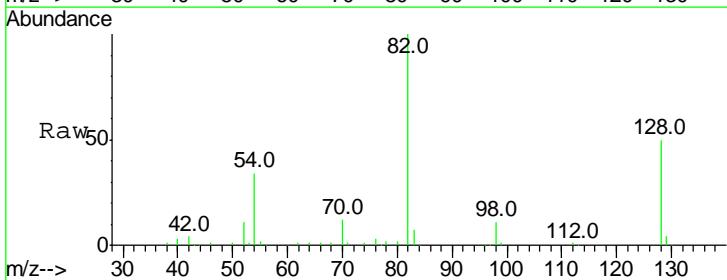
Ion	Ratio	Lower	Upper
136	100		
137	11.1	9.0	13.4
54	5.8	9.6	14.4#
68	6.3	6.4	9.6#

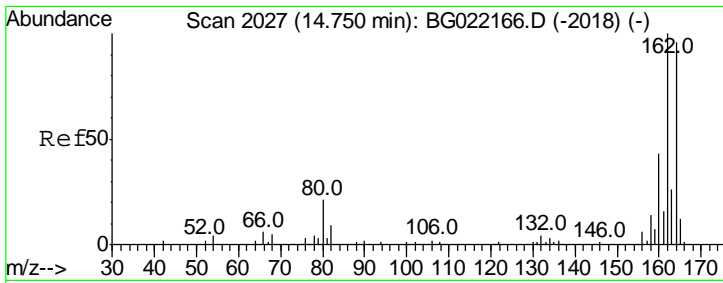


#23
 Nitrobenzene-d5
 Concen: 102.55 ng
 RT: 9.14 min Scan# 1073
 Delta R.T. -0.02 min
 Lab File: BG022508.D
 Acq: 23 Jun 2016 7:09

Tgt Ion: 82 Resp: 237714

Ion	Ratio	Lower	Upper
82	100		
128	50.4	33.4	50.0#
54	34.2	46.1	69.1#

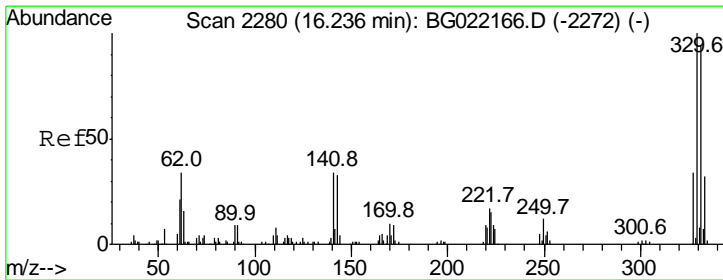
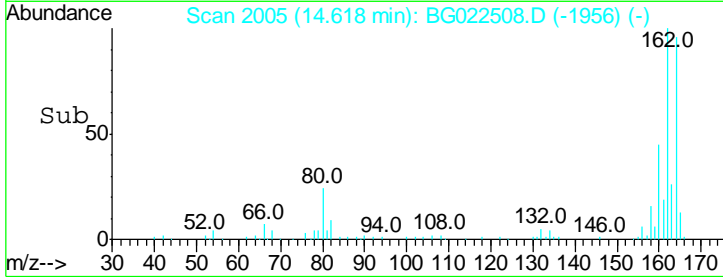
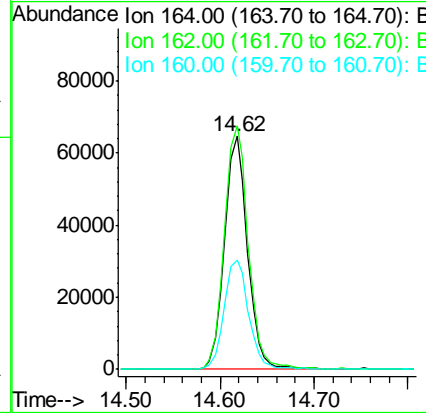
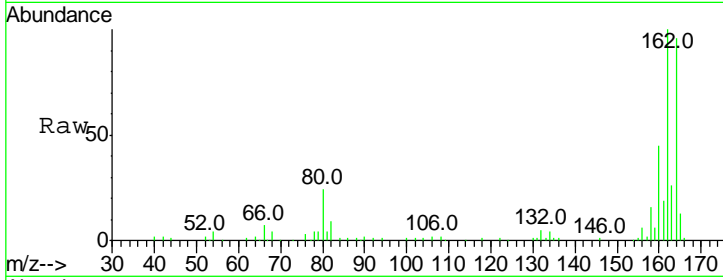




#38
 Acenaphthene-d10
 Concen: 20.00 ng
 RT: 14.62 min Scan# 2005
 Delta R.T. -0.01 min
 Lab File: BG022508.D
 Acq: 23 Jun 2016 7:09

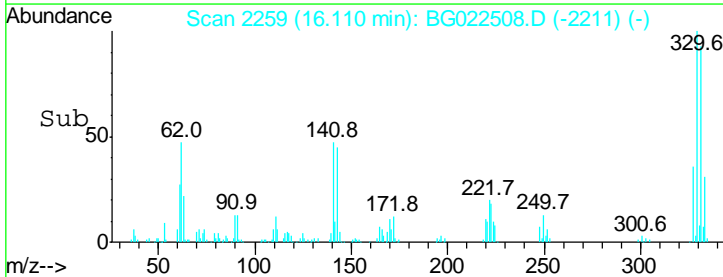
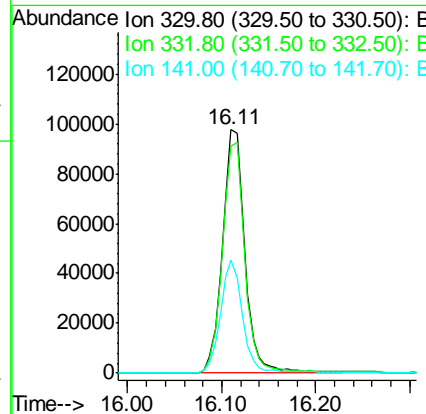
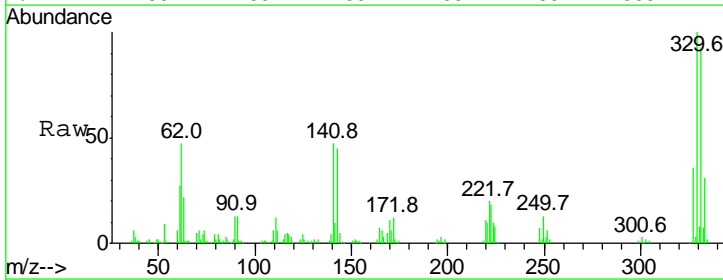
Instrument :
 BNA_G
 ClientSampled :

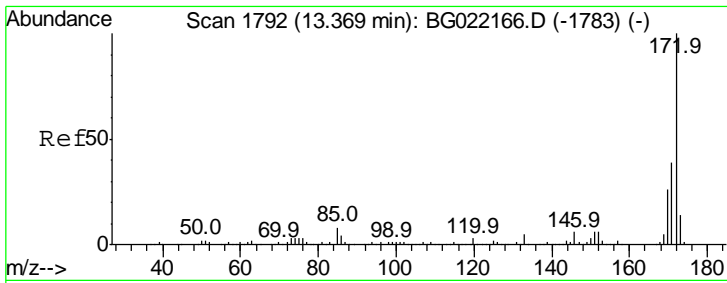
Tgt Ion	Resp	Lower	Upper
164	110895		
162	104.4	78.0	117.0
160	46.8	32.9	49.3



#41
 2,4,6-Tribromophenol
 Concen: 130.79 ng
 RT: 16.11 min Scan# 2259
 Delta R.T. -0.02 min
 Lab File: BG022508.D
 Acq: 23 Jun 2016 7:09

Tgt Ion	Resp	Lower	Upper
330	163882		
332	95.6	78.0	117.0
141	46.1	33.8	50.8

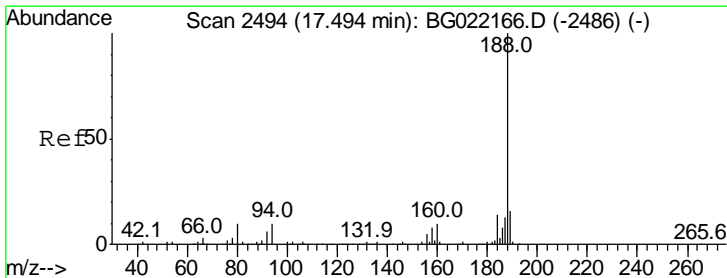
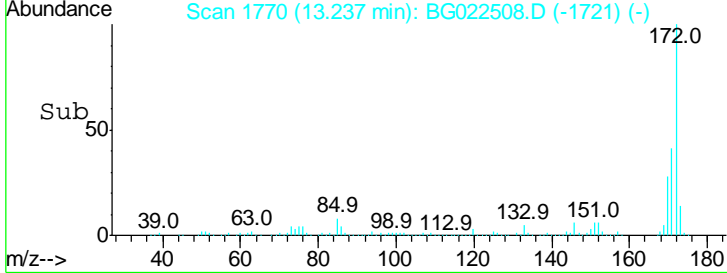
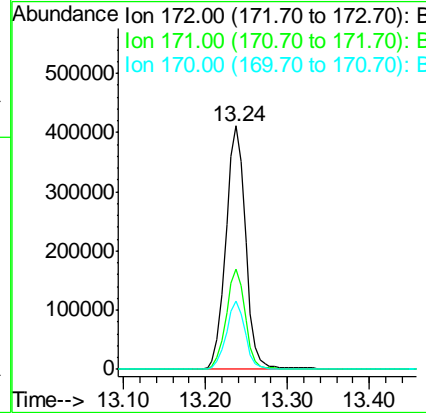
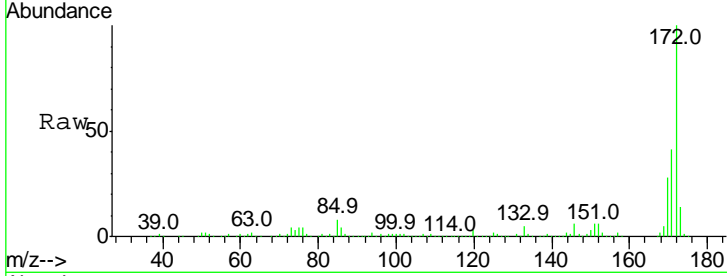




#44
 2-Fluorobiphenyl
 Concen: 95.63 ng
 RT: 13.24 min Scan# 1770
 Delta R.T. -0.01 min
 Lab File: BG022508.D
 Acq: 23 Jun 2016 7:09

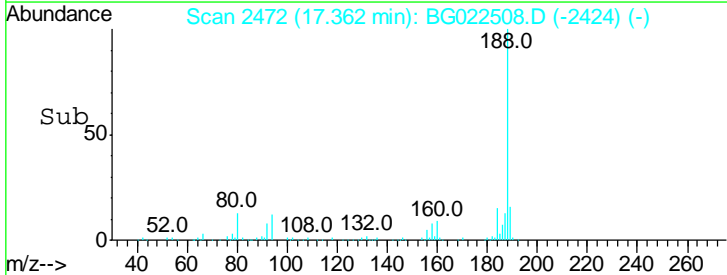
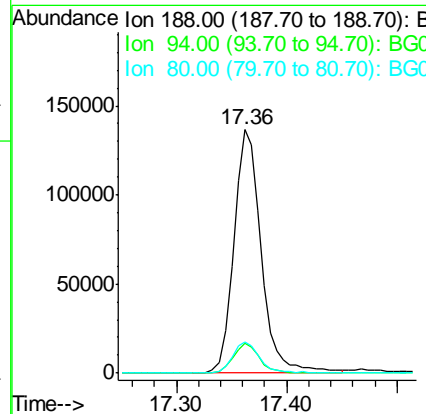
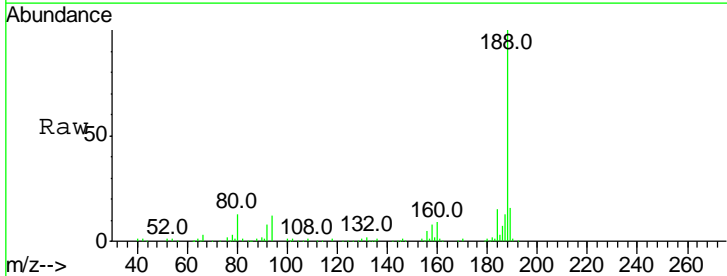
Instrument :
 BNA_G
 ClientSampled :

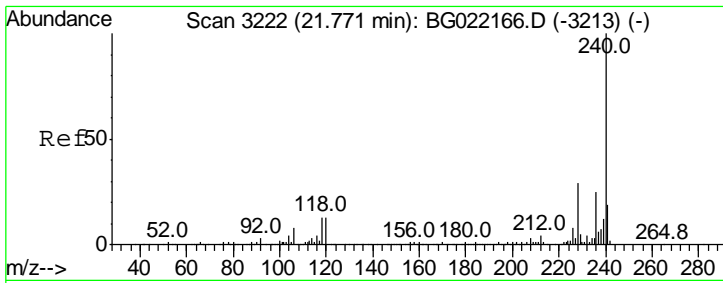
Tgt Ion	Resp	Lower	Upper
172	100		
171	41.2	27.8	41.6
170	28.1	19.6	29.4



#63
 Phenanthrene-d10
 Concen: 20.00 ng
 RT: 17.36 min Scan# 2472
 Delta R.T. -0.02 min
 Lab File: BG022508.D
 Acq: 23 Jun 2016 7:09

Tgt Ion	Resp	Lower	Upper
188	100		
94	12.1	7.5	11.3#
80	13.0	8.6	13.0#

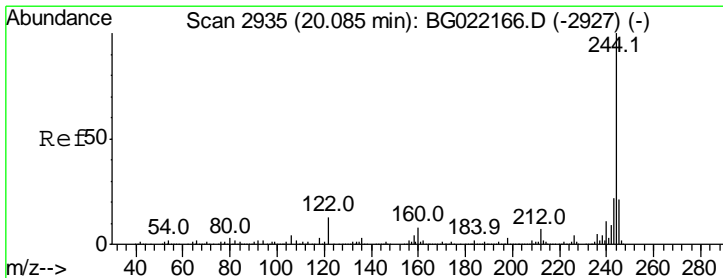
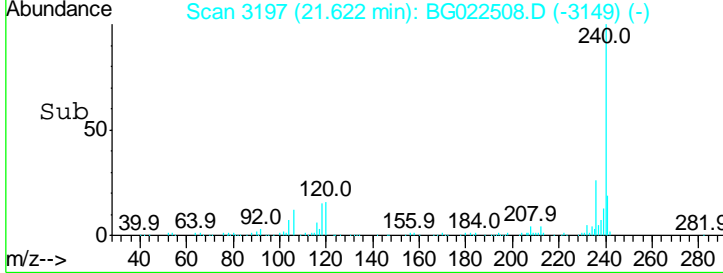
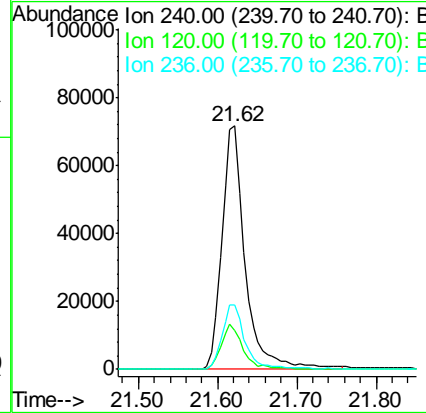
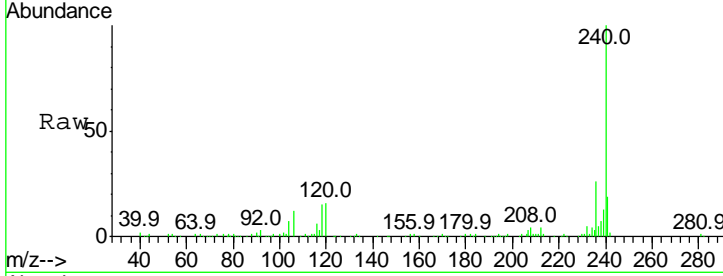




#75
 Chrysene-d12
 Concen: 20.00 ng
 RT: 21.62 min Scan# 3197
 Delta R.T. -0.02 min
 Lab File: BG022508.D
 Acq: 23 Jun 2016 7:09

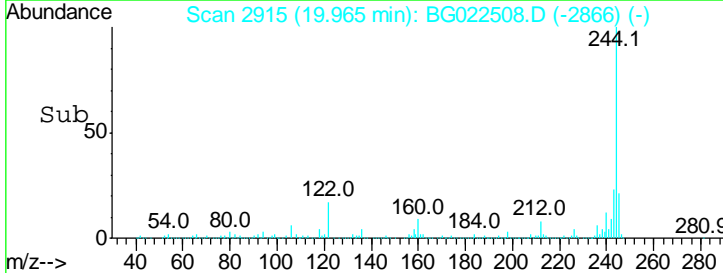
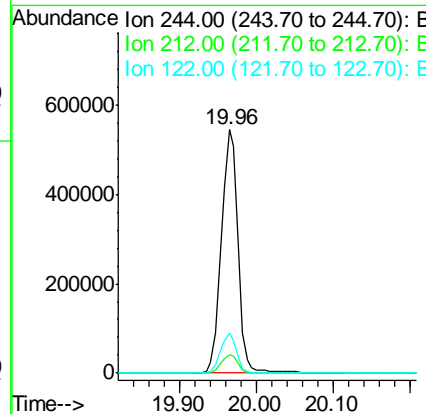
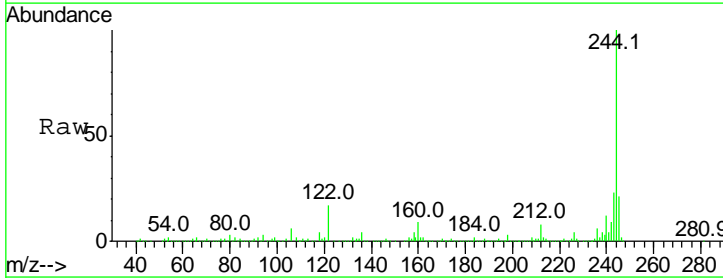
Instrument :
 BNA_G
 ClientSampled :

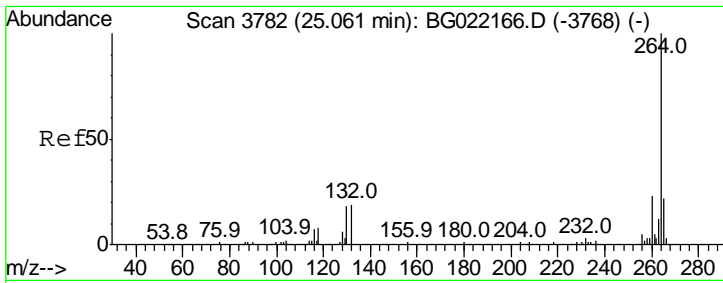
Tgt Ion	Resp	Lower	Upper
240	145339		
120	15.7	8.4	12.6#
236	26.3	19.6	29.4



#78
 Terphenyl-d14
 Concen: 131.57 ng
 RT: 19.96 min Scan# 2915
 Delta R.T. -0.01 min
 Lab File: BG022508.D
 Acq: 23 Jun 2016 7:09

Tgt Ion	Resp	Lower	Upper
244	805461		
212	7.8	6.5	9.7
122	16.6	8.6	12.8#





#86
 Perylene-d12
 Concen: 20.00 ng
 RT: 24.80 min Scan# 3738
 Delta R.T. -0.04 min
 Lab File: BG022508.D
 Acq: 23 Jun 2016 7:09

Instrument :
 BNA_G
 ClientSampled :

Tot Ion	Ion	Ratio	Lower	Upper
123321	264	100		
	260	25.3	20.2	30.4
	265	22.4	17.8	26.8

