

Data Path : Z:\svoasrv\HPCHEM1\BNA\_G\Data\BG062321\  
 Data File : BG049070.D  
 Acq On : 23 Jun 2021 20:54  
 Operator : CG/JU  
 Sample : M2795-07MS  
 Misc :  
 ALS Vial : 14 Sample Multiplier: 1

Instrument :  
 BNA\_G  
 ClientSampleId :  
 B4-0-2MS

Quant Time: Jun 24 02:18:56 2021  
 Quant Method : Z:\SVOASRV\HPCHEM1\BNA\_G\METHODS\8270-BG061121.M  
 Quant Title : ASP BNA STANDARDS FOR 5 POINT CALIBRATION  
 QLast Update : Wed Jun 16 12:04:50 2021  
 Response via : Initial Calibration

Compound	R.T.	QIon	Response	Conc	Units	Dev(Min)	
Internal Standards							
1) 1,4-Dichlorobenzene-d4	8.103	152	29855	20.00	ng	#-0.01	
21) Naphthalene-d8	10.929	136	120664	20.00	ng	#-0.01	
39) Acenaphthene-d10	14.748	164	94372	20.00	ng	-0.01	
64) Phenanthrene-d10	17.498	188	238382	20.00	ng	#-0.01	
76) Chrysene-d12	21.781	240	235088	20.00	ng	-0.02	
86) Perylene-d12	25.107	264	254035	20.00	ng	-0.02	
System Monitoring Compounds							
5) 2-Fluorophenol	5.659	112	40527	21.13	ng	0.00	
7) Phenol-d6	7.257	99	66197	23.03	ng	-0.01	
23) Nitrobenzene-d5	9.272	82	50862	18.18	ng	-0.01	
42) 2,4,6-Tribromophenol	16.235	330	22057	15.78	ng	-0.01	
45) 2-Fluorobiphenyl	13.368	172	115540	17.30	ng	-0.02	
79) Terphenyl-d14	20.101	244	245526	19.13	ng	-0.01	
Target Compounds							
2) 1,4-Dioxane	3.532	88	11755	12.55	ng	#	60
3) Pyridine	3.943	79	29741	11.71	ng		92
4) n-Nitrosodimethylamine	3.855	42	23110	19.00	ng	#	77
6) Aniline	7.422	93	42527	11.75	ng		93
8) 2-Chlorophenol	7.668	128	37417	17.70	ng		86
9) Benzaldehyde	7.234	77	28150	18.93	ng	#	77
10) Phenol	7.287	94	51877	17.47	ng		86
11) bis(2-Chloroethyl)ether	7.516	93	35188	15.97	ng		81
12) 1,3-Dichlorobenzene	7.992	146	39748	16.83	ng		95
13) 1,4-Dichlorobenzene	8.144	146	39215	16.66	ng		100
14) 1,2-Dichlorobenzene	8.462	146	40585	17.92	ng		88
15) Benzyl Alcohol	8.338	79	40842	15.51	ng		96
16) 2,2'-oxybis(1-Chloropr...	8.632	45	61437	14.74	ng		86
17) 2-Methylphenol	8.544	107	32896	16.89	ng		92
18) Hexachloroethane	9.196	117	16429	17.39	ng		95
19) n-Nitroso-di-n-propyla...	8.908	70	34424	15.32	ng	#	89
20) 3+4-Methylphenols	8.873	107	45781	17.19	ng		97
22) Acetophenone	8.932	105	65281	17.78	ng	#	97
24) Nitrobenzene	9.314	77	51711	16.40	ng		98
25) Isophorone	9.842	82	85546	14.03	ng		97
26) 2-Nitrophenol	10.030	139	20423	19.10	ng		95
27) 2,4-Dimethylphenol	10.089	122	37536	19.36	ng		89
28) bis(2-Chloroethoxy)met...	10.324	93	45757	16.21	ng	#	89
29) 2,4-Dichlorophenol	10.571	162	36978	17.00	ng		90
30) 1,2,4-Trichlorobenzene	10.788	180	44262	17.75	ng		91
31) Naphthalene	10.976	128	117717	16.38	ng		97
33) 4-Chloroaniline	11.082	127	34189	11.20	ng		96
34) Hexachlorobutadiene	11.264	225	31484	17.72	ng		95
35) Caprolactam	11.840	113	12734	20.25	ng	#	26
36) 4-Chloro-3-methylphenol	12.198	107	47454	17.85	ng	#	92
37) 2-Methylnaphthalene	12.580	142	89847	16.55	ng		93
38) 1-Methylnaphthalene	12.798	142	85063	16.69	ng		94
40) 1,2,4,5-Tetrachloroben...	12.945	216	52710	17.59	ng		96
41) Hexachlorocyclopentadiene	12.927	237	72876	37.83	ng		89
43) 2,4,6-Trichlorophenol	13.180	196	37745	18.82	ng		91
44) 2,4,5-Trichlorophenol	13.256	196	42126	20.32	ng		93

Data Path : Z:\svoasrv\HPCHEM1\BNA\_G\Data\BG062321\  
 Data File : BG049070.D  
 Acq On : 23 Jun 2021 20:54  
 Operator : CG/JU  
 Sample : M2795-07MS  
 Misc :  
 ALS Vial : 14 Sample Multiplier: 1

Instrument :  
 BNA\_G  
 ClientSampleId :  
 B4-0-2MS

Quant Time: Jun 24 02:18:56 2021  
 Quant Method : Z:\SVOASRV\HPCHEM1\BNA\_G\METHODS\8270-BG061121.M  
 Quant Title : ASP BNA STANDARDS FOR 5 POINT CALIBRATION  
 QLast Update : Wed Jun 16 12:04:50 2021  
 Response via : Initial Calibration

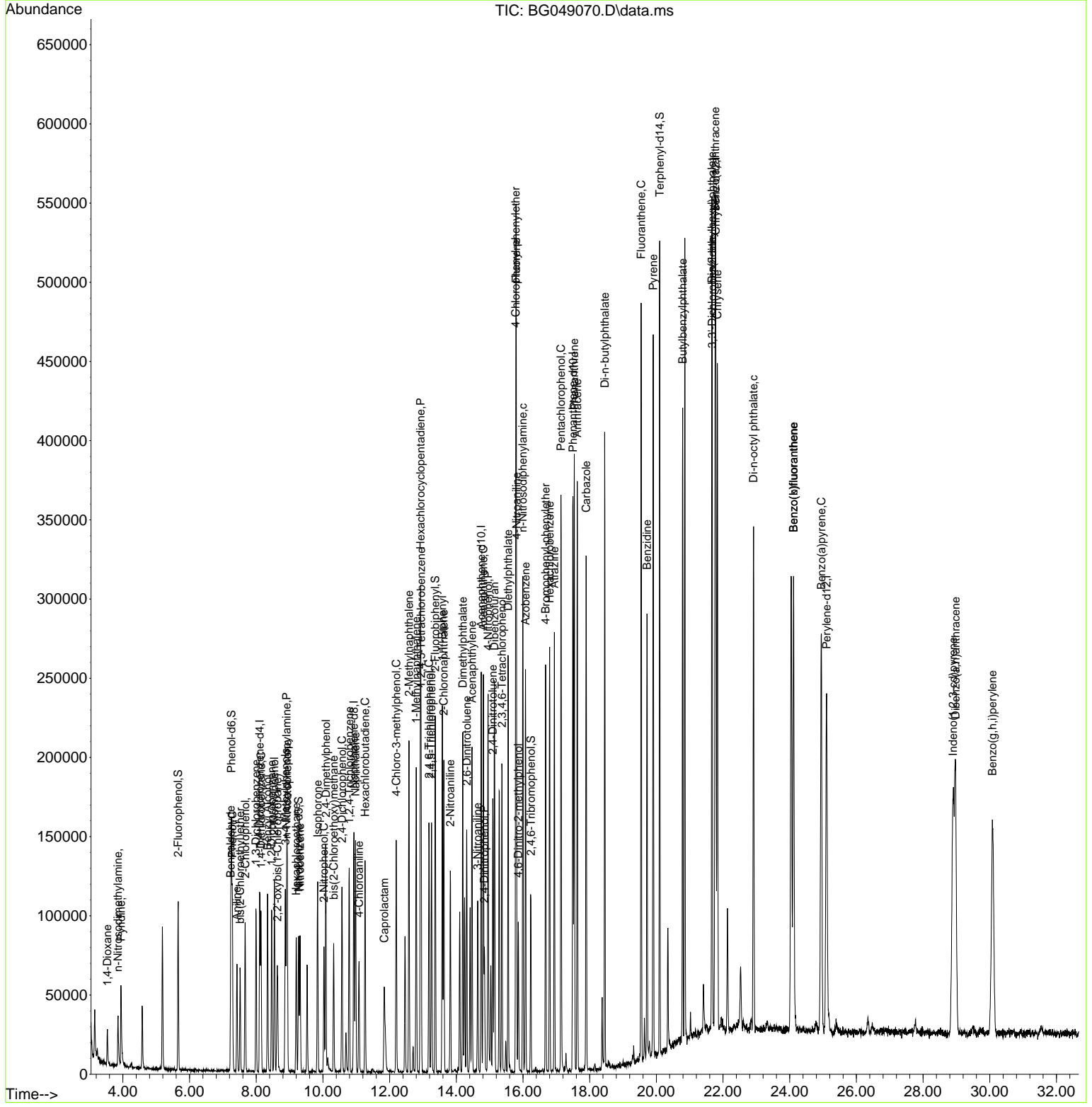
Compound	R.T.	QIon	Response	Conc	Units	Dev(Min)
46) 1,1'-Biphenyl	13.579	154	119973	17.24	ng	99
47) 2-Chloronaphthalene	13.626	162	92386	16.63	ng	99
48) 2-Nitroaniline	13.820	65	35983	20.72	ng	88
49) Acenaphthylene	14.472	152	152102	16.43	ng	96
50) Dimethylphthalate	14.196	163	134155	18.25	ng	# 97
51) 2,6-Dinitrotoluene	14.314	165	28613	19.11	ng	93
52) Acenaphthene	14.813	154	103448	17.34	ng	99
53) 3-Nitroaniline	14.637	138	22329	14.73	ng	95
54) 2,4-Dinitrophenol	14.842	184	15540	22.41	ng	96
55) Dibenzofuran	15.148	168	156506	16.87	ng	98
56) 4-Nitrophenol	14.954	139	52487	42.48	ng	87
57) 2,4-Dinitrotoluene	15.095	165	42985	23.38	ng	# 95
58) Fluorene	15.794	166	131249	17.30	ng	92
59) 2,3,4,6-Tetrachlorophenol	15.371	232	41932	19.98	ng	# 98
60) Diethylphthalate	15.553	149	147499	18.53	ng	98
61) 4-Chlorophenyl-phenyle...	15.783	204	71878	18.12	ng	96
62) 4-Nitroaniline	15.806	138	32099	20.94	ng	# 81
63) Azobenzene	16.076	77	144747	15.89	ng	89
65) 4,6-Dinitro-2-methylph...	15.859	198	19797	17.51	ng	91
66) n-Nitrosodiphenylamine	15.994	169	117426	15.81	ng	97
67) 4-Bromophenyl-phenylether	16.681	248	51753	17.39	ng	93
68) Hexachlorobenzene	16.799	284	59317	18.39	ng	94
69) Atrazine	16.940	200	52969	22.21	ng	97
70) Pentachlorophenol	17.140	266	67436	34.78	ng	94
71) Phenanthrene	17.539	178	238790	17.80	ng	96
72) Anthracene	17.627	178	240043	17.81	ng	97
73) Carbazole	17.898	167	217551	16.84	ng	98
74) Di-n-butylphthalate	18.450	149	268331	18.52	ng	98
75) Fluoranthene	19.543	202	301824	18.66	ng	99
77) Benzidine	19.719	184	160962	33.99	ng	96
78) Pyrene	19.907	202	306080	17.94	ng	98
80) Butylbenzylphthalate	20.788	149	113696	17.66	ng	93
81) Benzo(a)anthracene	21.764	228	303033	17.95	ng	98
82) 3,3'-Dichlorobenzidine	21.676	252	75581	14.00	ng	96
83) Chrysene	21.828	228	284151	17.56	ng	100
84) Bis(2-ethylhexyl)phtha...	21.664	149	161760	17.63	ng	98
85) Di-n-octyl phthalate	22.915	149	277390	17.82	ng	97
87) Indeno(1,2,3-cd)pyrene	28.897	276	357131	18.68	ng	97
88) Benzo(b)fluoranthene	24.114	252	307307	16.97	ng	97
89) Benzo(k)fluoranthene	24.114	252	307307	17.89	ng	99
90) Benzo(a)pyrene	24.948	252	310089	18.76	ng	# 98
91) Dibenzo(a,h)anthracene	28.973	278	303407	18.99	ng	# 98
92) Benzo(g,h,i)perylene	30.078	276	300370	18.64	ng	97

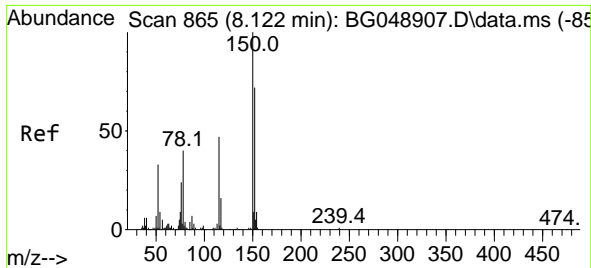
(#) = qualifier out of range (m) = manual integration (+) = signals summed

Data Path : Z:\svoasrv\HPCHEM1\BNA\_G\Data\BG062321\  
 Data File : BG049070.D  
 Acq On : 23 Jun 2021 20:54  
 Operator : CG/JU  
 Sample : M2795-07MS  
 Misc :  
 ALS Vial : 14 Sample Multiplier: 1

Instrument :  
 BNA\_G  
 Client Sampled :  
 B4-0-2MS

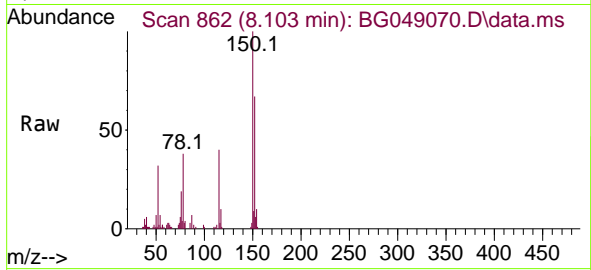
Quant Time: Jun 24 02:18:56 2021  
 Quant Method : Z:\SVOASRV\HPCHEM1\BNA\_G\METHODS\8270-BG061121.M  
 Quant Title : ASP BNA STANDARDS FOR 5 POINT CALIBRATION  
 QLast Update : Wed Jun 16 12:04:50 2021  
 Response via : Initial Calibration



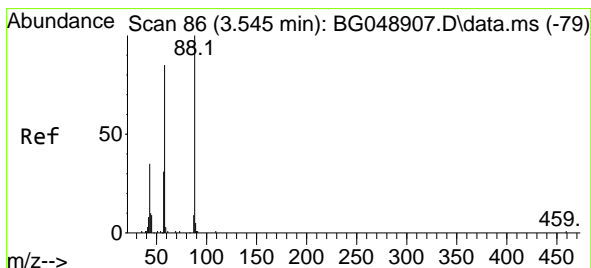
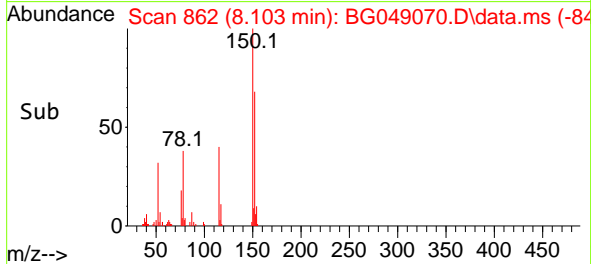
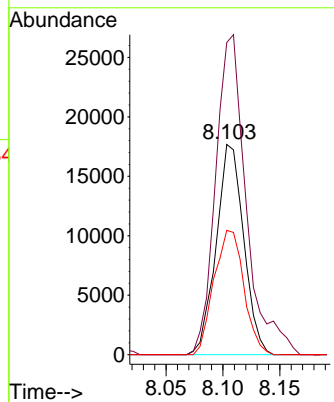


#1  
 1,4-Dichlorobenzene-d4  
 Concen: 20.00 ng  
 RT: 8.103 min Scan# 862  
 Delta R.T. -0.011 min  
 Lab File: BG049070.D  
 Acq: 23 Jun 2021 20:54

Instrument :  
 BNA\_G  
 ClientSampled :  
 B4-0-2MS

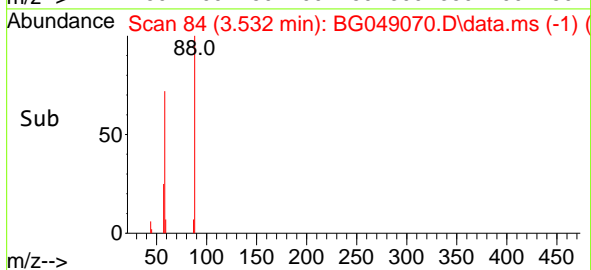
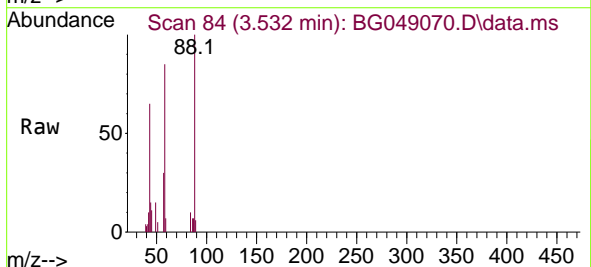
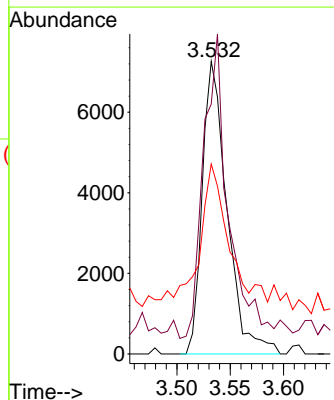


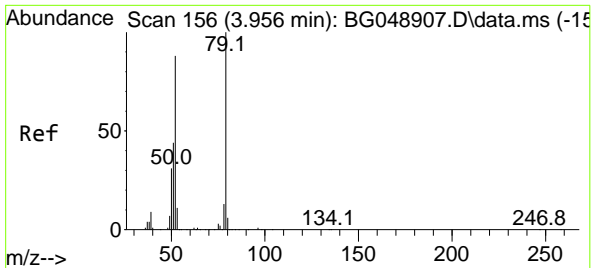
Tgt Ion:152 Resp: 29855  
 Ion Ratio Lower Upper  
 152 100  
 150 148.4 119.4 179.0  
 115 59.1 60.2 90.4#



#2  
 1,4-Dioxane  
 Concen: 12.55 ng  
 RT: 3.532 min Scan# 84  
 Delta R.T. -0.004 min  
 Lab File: BG049070.D  
 Acq: 23 Jun 2021 20:54

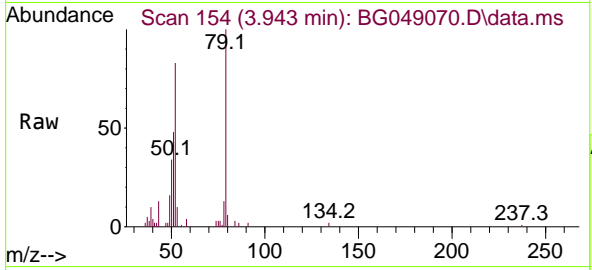
Tgt Ion: 88 Resp: 11755  
 Ion Ratio Lower Upper  
 88 100  
 58 103.6 55.7 83.5#  
 43 59.1 29.3 43.9#





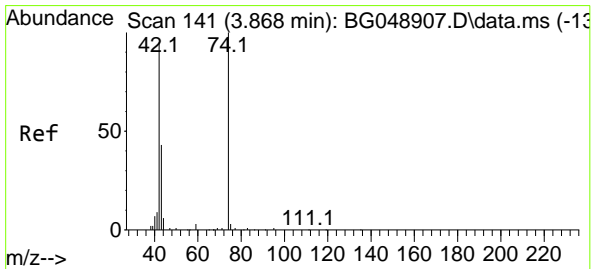
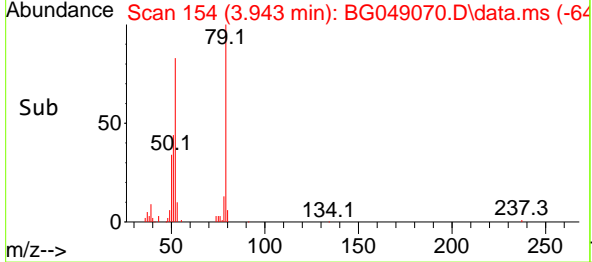
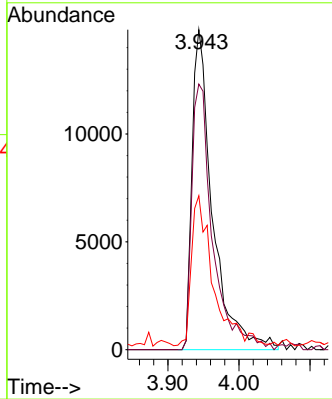
#3  
 Pyridine  
 Concen: 11.71 ng  
 RT: 3.943 min Scan# 154  
 Delta R.T. 0.001 min  
 Lab File: BG049070.D  
 Acq: 23 Jun 2021 20:54

Instrument :  
 BNA\_G  
 ClientSampled :  
 B4-0-2MS

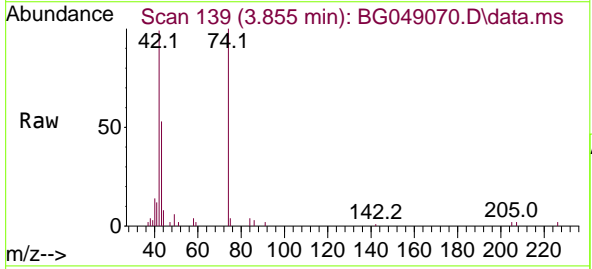


Tgt Ion: 79 Resp: 29741

Ion	Ratio	Lower	Upper
79	100		
52	83.0	58.4	87.6
51	48.1	37.0	55.6

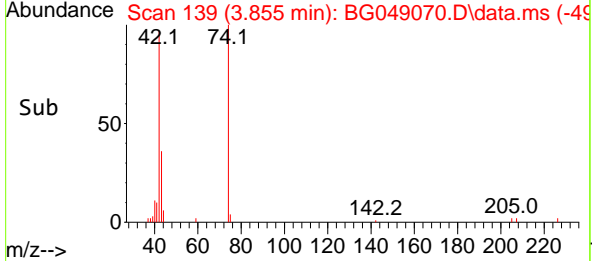
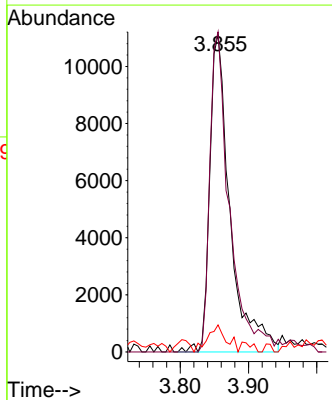


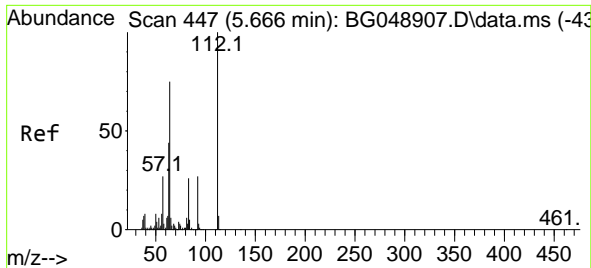
#4  
 n-Nitrosodimethylamine  
 Concen: 19.00 ng  
 RT: 3.855 min Scan# 139  
 Delta R.T. 0.002 min  
 Lab File: BG049070.D  
 Acq: 23 Jun 2021 20:54



Tgt Ion: 42 Resp: 23110

Ion	Ratio	Lower	Upper
42	100		
74	100.8	64.0	96.0#
44	8.5	2.7	4.1#

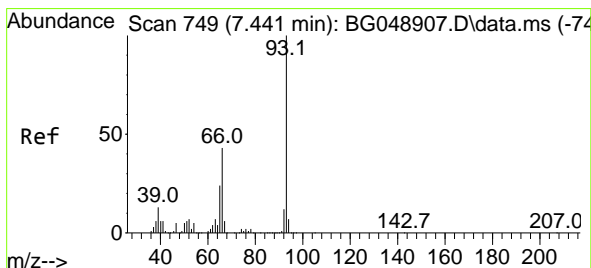
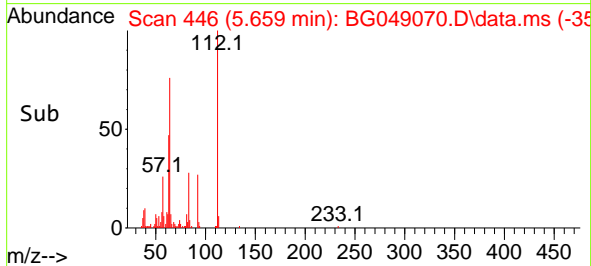
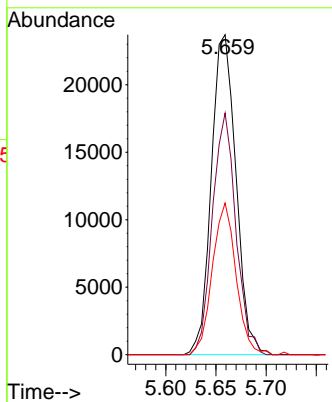
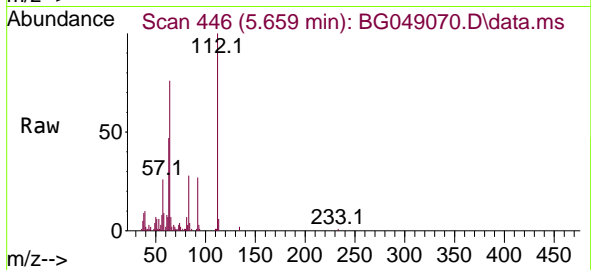




#5  
 2-Fluorophenol  
 Concen: 21.13 ng  
 RT: 5.659 min Scan# 446  
 Delta R.T. -0.004 min  
 Lab File: BG049070.D  
 Acq: 23 Jun 2021 20:54

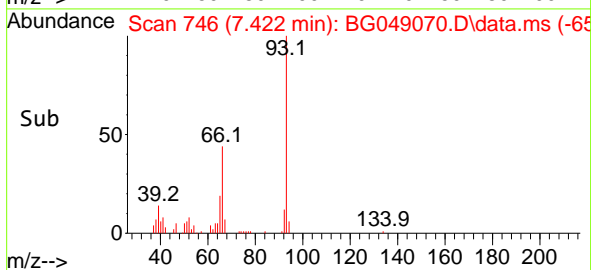
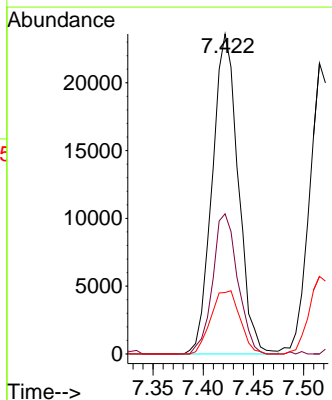
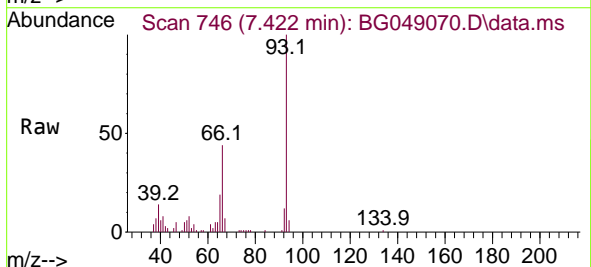
Instrument :  
 BNA\_G  
 ClientSampled :  
 B4-0-2MS

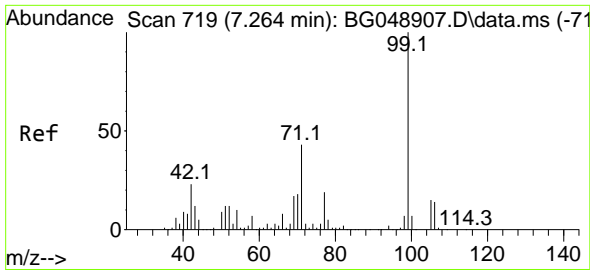
Tgt Ion	Resp	Lower	Upper
112	100		
64	75.5	46.7	70.1#
63	47.4	35.3	52.9



#6  
 Aniline  
 Concen: 11.75 ng  
 RT: 7.422 min Scan# 746  
 Delta R.T. -0.010 min  
 Lab File: BG049070.D  
 Acq: 23 Jun 2021 20:54

Tgt Ion	Resp	Lower	Upper
93	100		
66	43.8	30.6	45.8
65	19.2	15.0	22.4

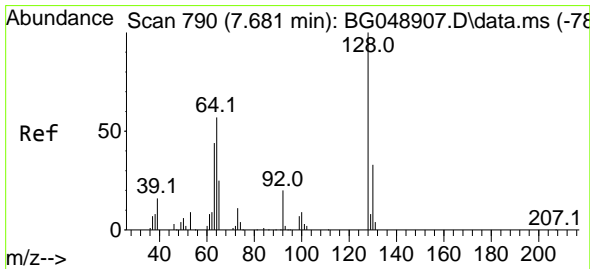
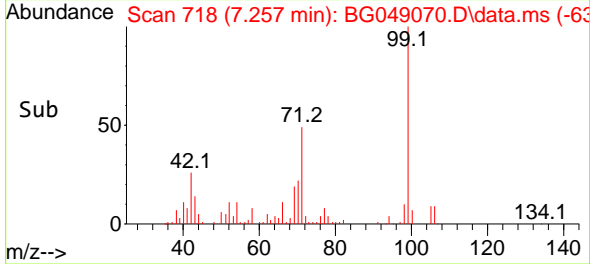
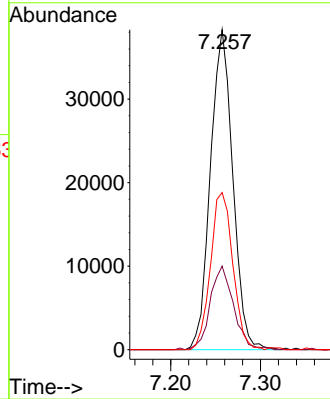
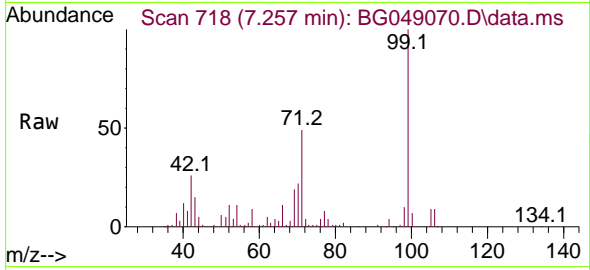




#7  
 Phenol-d6  
 Concen: 23.03 ng  
 RT: 7.257 min Scan# 718  
 Delta R.T. -0.010 min  
 Lab File: BG049070.D  
 Acq: 23 Jun 2021 20:54

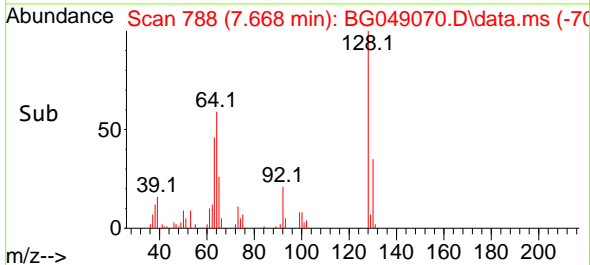
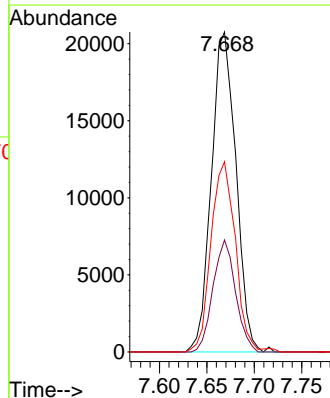
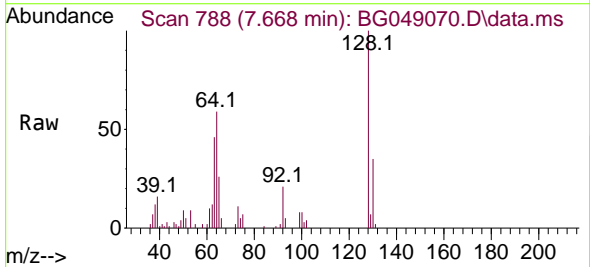
Instrument :  
 BNA\_G  
 ClientSampled :  
 B4-0-2MS

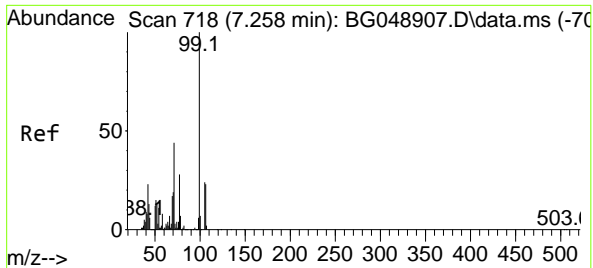
Tgt Ion	Resp	Lower	Upper
99	66197		
99	100		
42	26.1	20.5	30.7
71	49.1	41.5	62.3



#8  
 2-Chlorophenol  
 Concen: 17.70 ng  
 RT: 7.668 min Scan# 788  
 Delta R.T. -0.010 min  
 Lab File: BG049070.D  
 Acq: 23 Jun 2021 20:54

Tgt Ion	Resp	Lower	Upper
128	37417		
128	100		
130	35.0	10.0	50.0
64	59.5	28.1	68.1

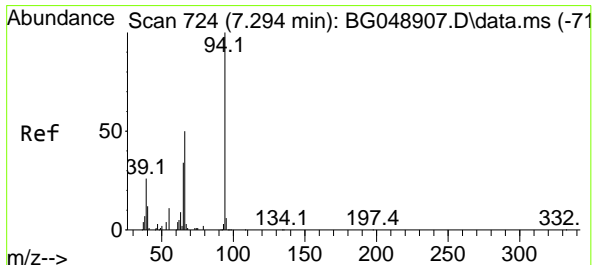
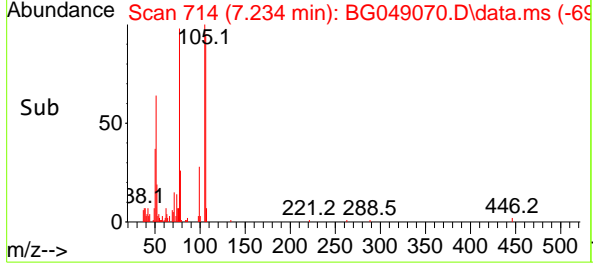
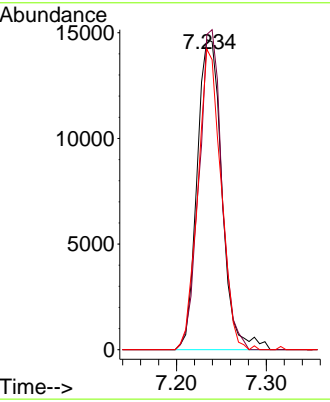
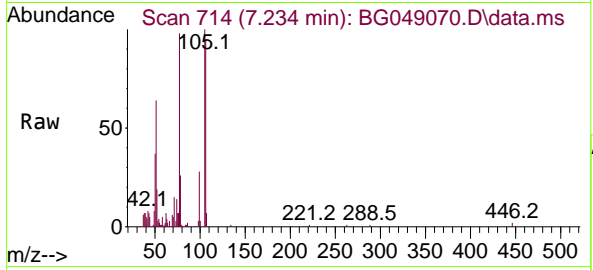




#9  
 Benzaldehyde  
 Concen: 18.93 ng  
 RT: 7.234 min Scan# 714  
 Delta R.T. -0.010 min  
 Lab File: BG049070.D  
 Acq: 23 Jun 2021 20:54

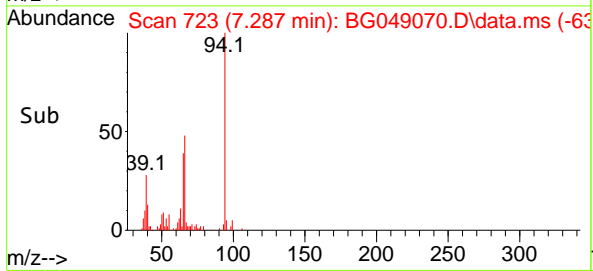
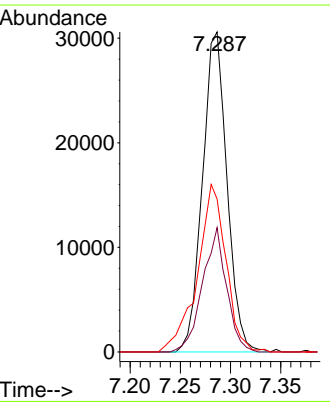
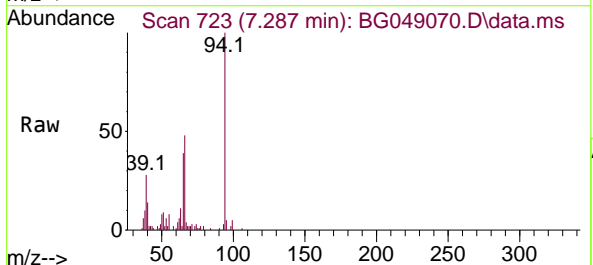
**Instrument :**  
 BNA\_G  
**ClientSampled :**  
 B4-0-2MS

Tgt Ion	Resp	Lower	Upper
77	28150		
77	100		
105	101.7	68.8	108.8
106	97.0	47.9	87.9#

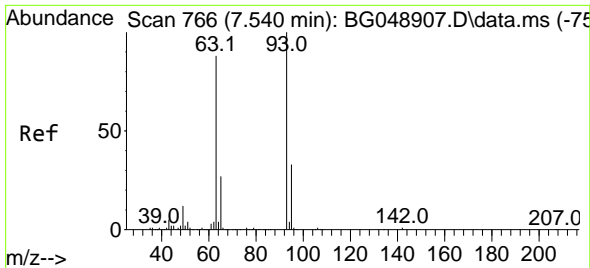


#10  
 Phenol  
 Concen: 17.47 ng  
 RT: 7.287 min Scan# 723  
 Delta R.T. -0.004 min  
 Lab File: BG049070.D  
 Acq: 23 Jun 2021 20:54

Tgt Ion	Resp	Lower	Upper
94	51877		
94	100		
65	38.9	12.9	52.9
66	47.8	39.4	79.4

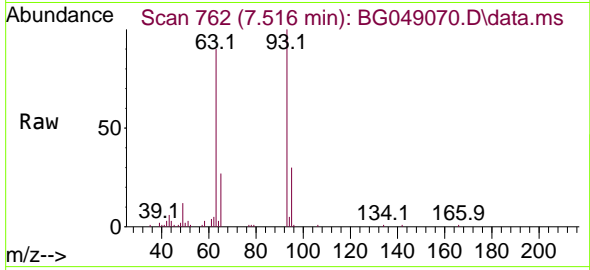






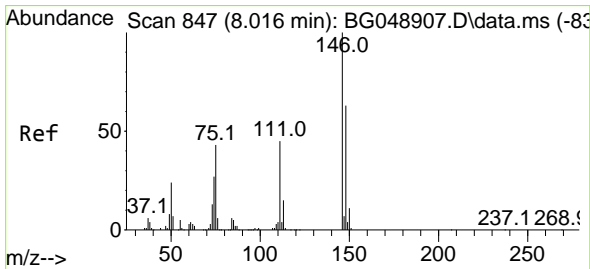
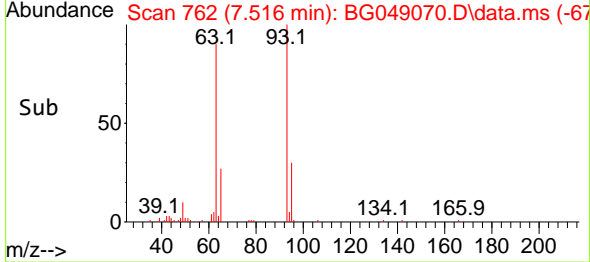
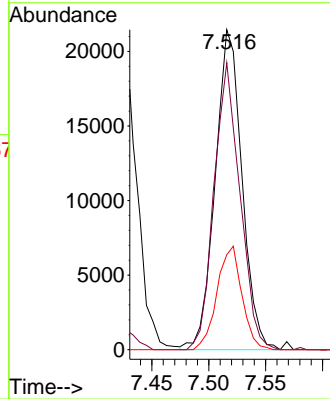
#11  
 bis(2-Chloroethyl)ether  
 Concen: 15.97 ng  
 RT: 7.516 min Scan# 762  
 Delta R.T. -0.010 min  
 Lab File: BG049070.D  
 Acq: 23 Jun 2021 20:54

Instrument :  
 BNA\_G  
 ClientSampled :  
 B4-0-2MS

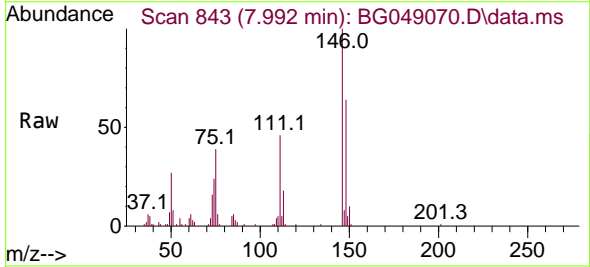


Tgt Ion: 93 Resp: 35188

Ion	Ratio	Lower	Upper
93	100		
63	89.7	50.4	90.4
95	29.6	15.3	55.3

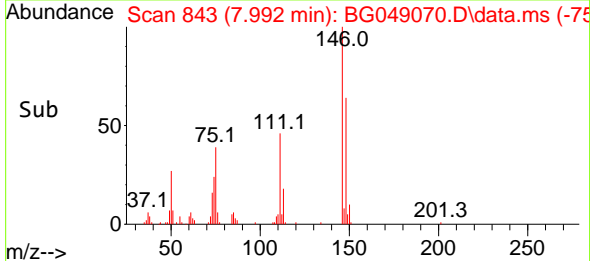
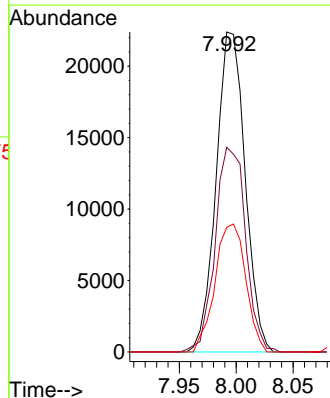


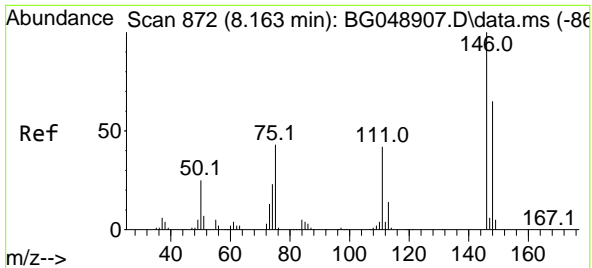
#12  
 1,3-Dichlorobenzene  
 Concen: 16.83 ng  
 RT: 7.992 min Scan# 843  
 Delta R.T. -0.010 min  
 Lab File: BG049070.D  
 Acq: 23 Jun 2021 20:54



Tgt Ion: 146 Resp: 39748

Ion	Ratio	Lower	Upper
146	100		
148	64.0	52.6	78.8
75	38.9	35.7	53.5

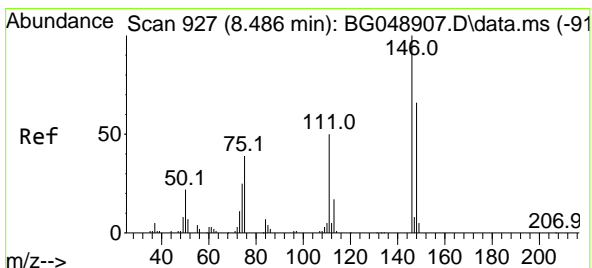
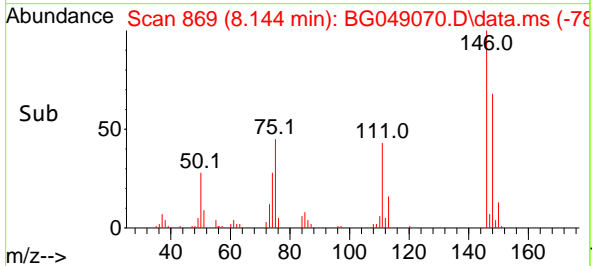
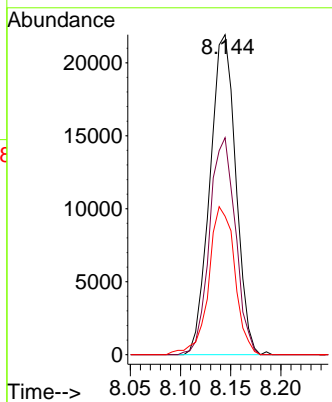
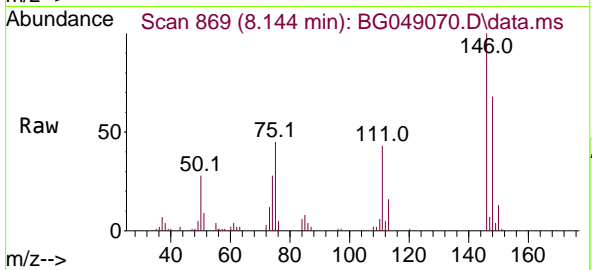




#13  
 1,4-Dichlorobenzene  
 Concen: 16.66 ng  
 RT: 8.144 min Scan# 869  
 Delta R.T. -0.004 min  
 Lab File: BG049070.D  
 Acq: 23 Jun 2021 20:54

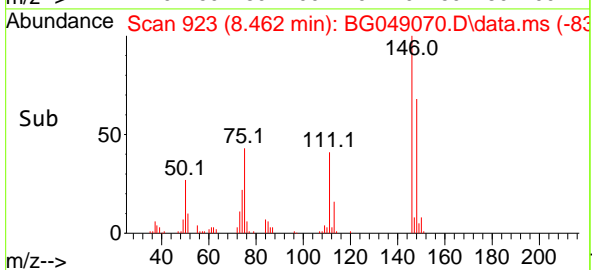
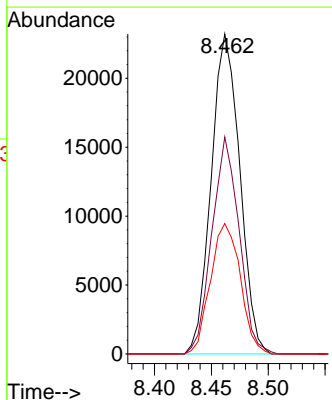
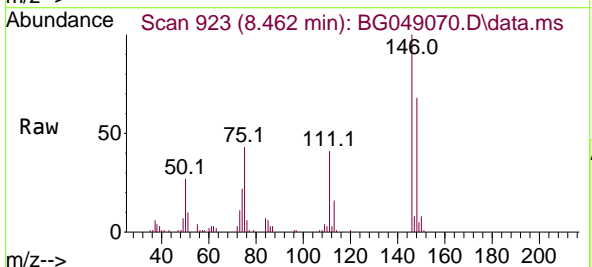
Instrument :  
 BNA\_G  
 ClientSampled :  
 B4-0-2MS

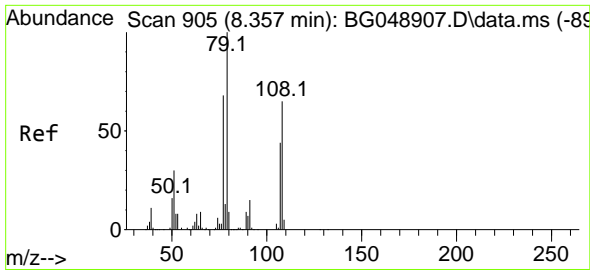
Tgt Ion	Resp	Lower	Upper
146	39215		
148	67.8	54.0	81.0
111	43.2	34.3	51.5



#14  
 1,2-Dichlorobenzene  
 Concen: 17.92 ng  
 RT: 8.462 min Scan# 923  
 Delta R.T. -0.010 min  
 Lab File: BG049070.D  
 Acq: 23 Jun 2021 20:54

Tgt Ion	Resp	Lower	Upper
146	40585		
148	67.8	47.5	71.3
111	40.8	39.1	58.7



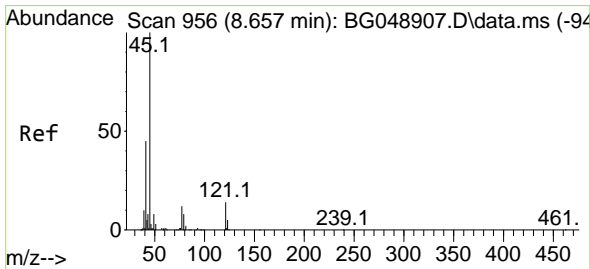
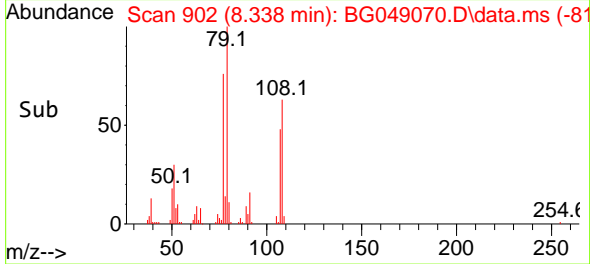
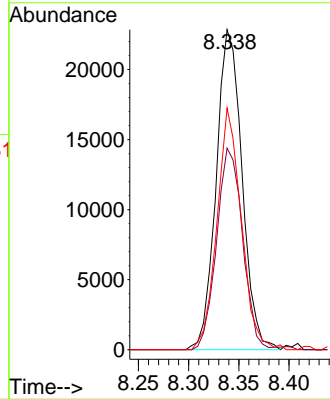
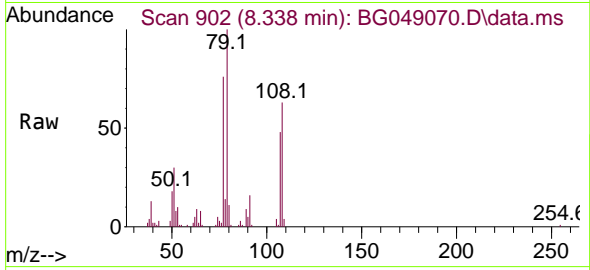


#15  
 Benzyl Alcohol  
 Concen: 15.51 ng  
 RT: 8.338 min Scan# 902  
 Delta R.T. -0.010 min  
 Lab File: BG049070.D  
 Acq: 23 Jun 2021 20:54

Instrument :  
 BNA\_G  
 ClientSampled :  
 B4-0-2MS

Tgt Ion: 79 Resp: 40842

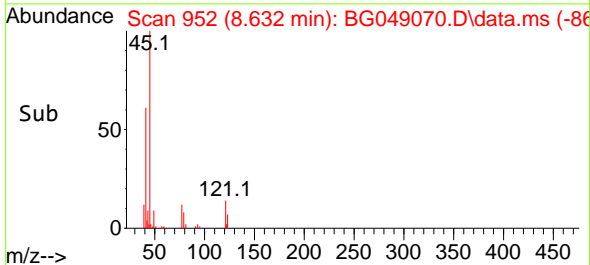
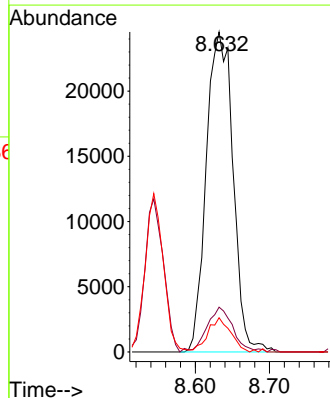
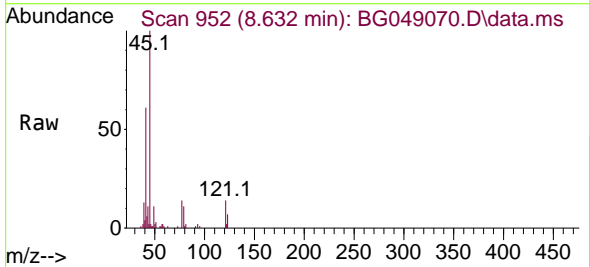
Ion	Ratio	Lower	Upper
79	100		
108	62.9	48.2	72.4
77	75.5	57.3	85.9

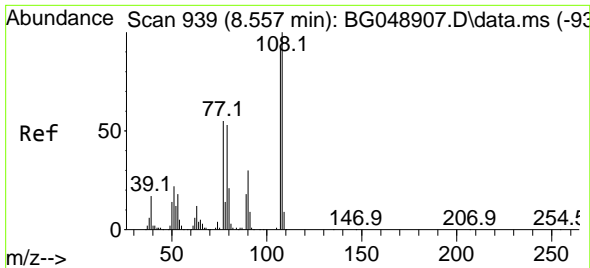


#16  
 2,2'-oxybis(1-Chloropropane)  
 Concen: 14.74 ng  
 RT: 8.632 min Scan# 952  
 Delta R.T. -0.010 min  
 Lab File: BG049070.D  
 Acq: 23 Jun 2021 20:54

Tgt Ion: 45 Resp: 61437

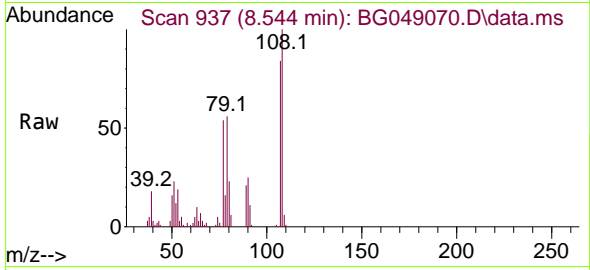
Ion	Ratio	Lower	Upper
45	100		
77	14.0	2.2	42.2
79	10.7	0.0	34.3



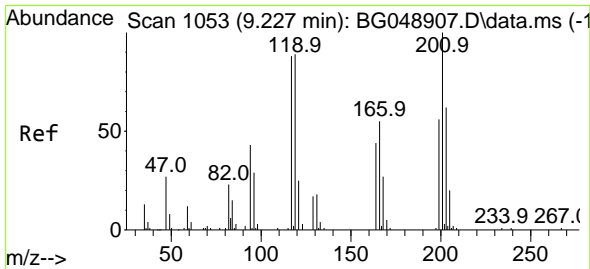
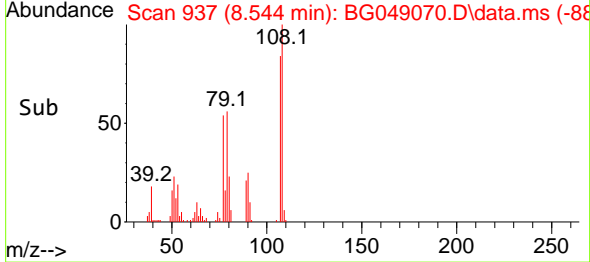
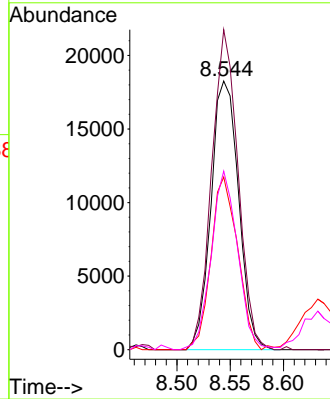


#17  
 2-Methylphenol  
 Concen: 16.89 ng  
 RT: 8.544 min Scan# 937  
 Delta R.T. -0.010 min  
 Lab File: BG049070.D  
 Acq: 23 Jun 2021 20:54

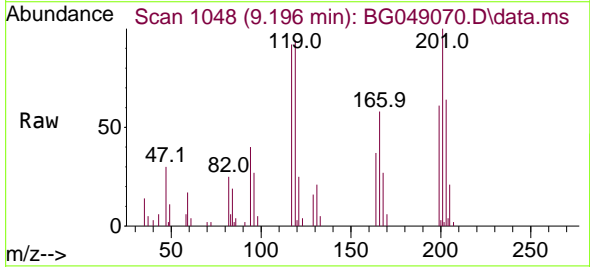
Instrument :  
 BNA\_G  
 ClientSampleId :  
 B4-0-2MS



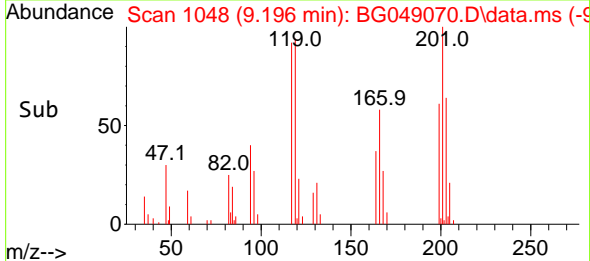
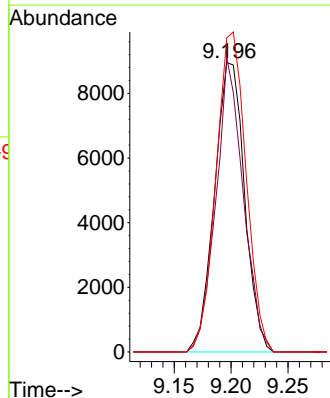
Tgt Ion	Resp	Lower	Upper
107	32896		
107	100		
108	119.1	84.6	127.0
77	64.3	50.7	76.1
79	66.5	49.4	74.0

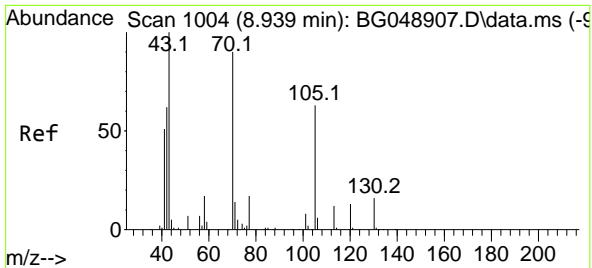


#18  
 Hexachloroethane  
 Concen: 17.39 ng  
 RT: 9.196 min Scan# 1048  
 Delta R.T. -0.010 min  
 Lab File: BG049070.D  
 Acq: 23 Jun 2021 20:54



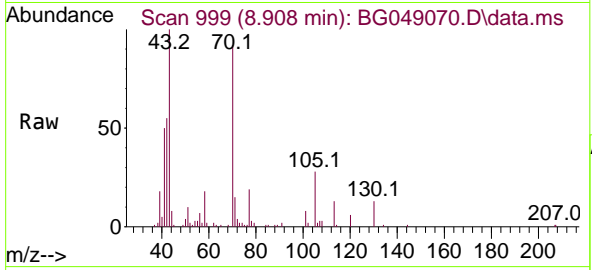
Tgt Ion	Resp	Lower	Upper
117	16429		
117	100		
119	101.7	74.4	111.6
201	108.5	88.6	133.0



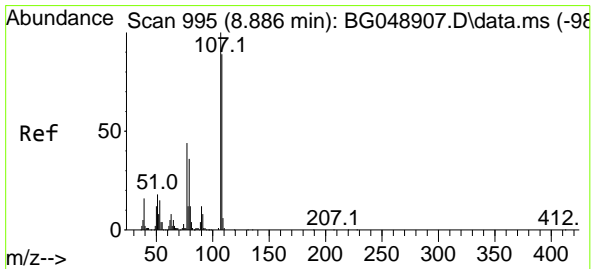
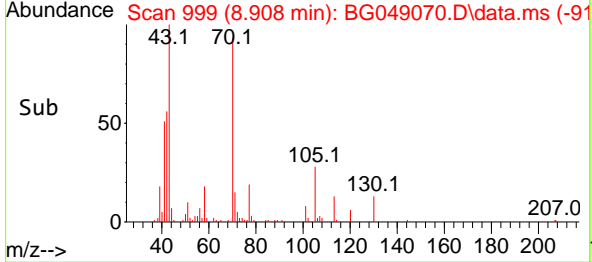
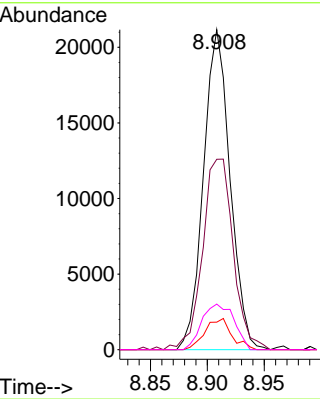


#19  
 n-Nitroso-di-n-propylamine  
 Concen: 15.32 ng  
 RT: 8.908 min Scan# 999  
 Delta R.T. -0.016 min  
 Lab File: BG049070.D  
 Acq: 23 Jun 2021 20:54

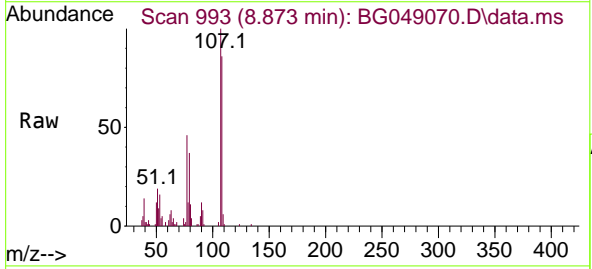
Instrument :  
 BNA\_G  
 ClientSampled :  
 B4-0-2MS



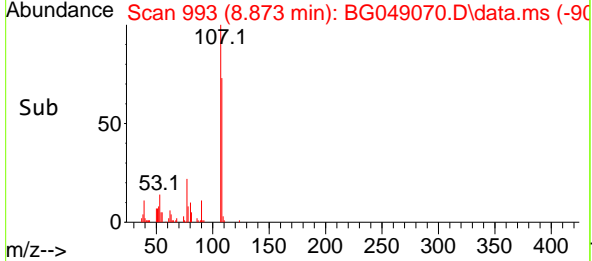
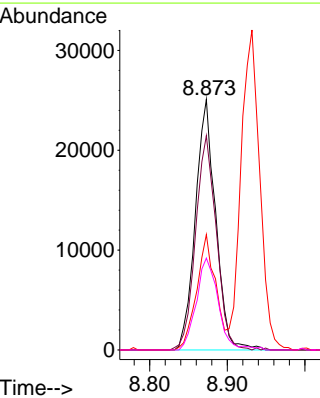
Tgt Ion	Resp	Lower	Upper
70	100		
42	59.5	54.5	81.7
101	8.6	9.0	13.6#
130	14.3	17.0	25.6#

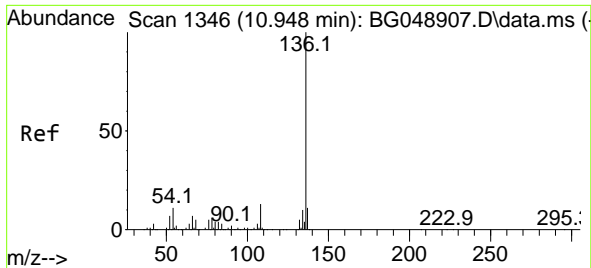


#20  
 3+4-Methylphenols  
 Concen: 17.19 ng  
 RT: 8.873 min Scan# 993  
 Delta R.T. -0.010 min  
 Lab File: BG049070.D  
 Acq: 23 Jun 2021 20:54



Tgt Ion	Resp	Lower	Upper
107	100		
108	85.5	69.3	109.3
77	46.1	25.2	65.2
79	36.6	15.1	55.1

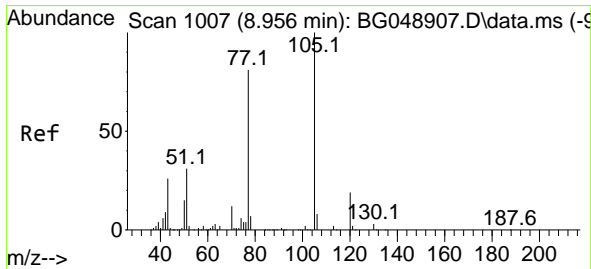
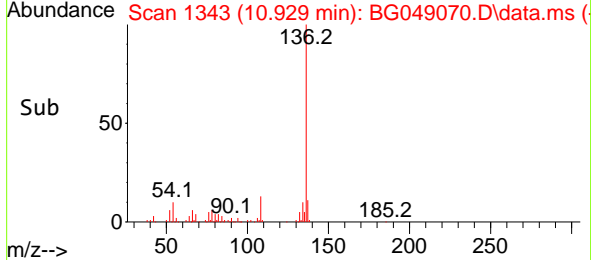
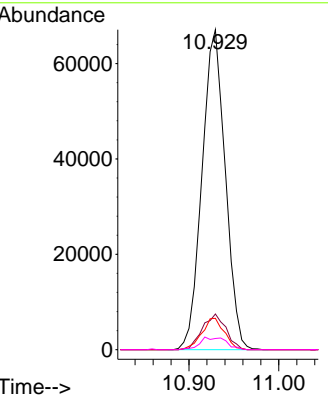
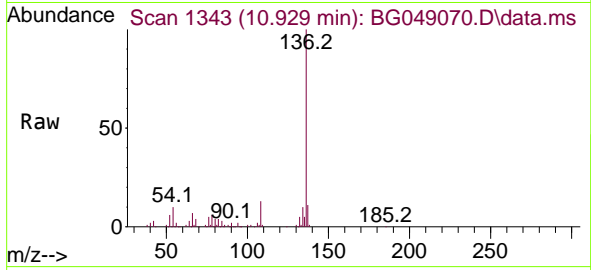




#21  
 Naphthalene-d8  
 Concen: 20.00 ng  
 RT: 10.929 min Scan# 1343  
 Delta R.T. -0.010 min  
 Lab File: BG049070.D  
 Acq: 23 Jun 2021 20:54

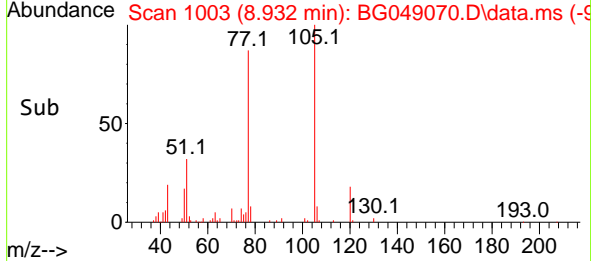
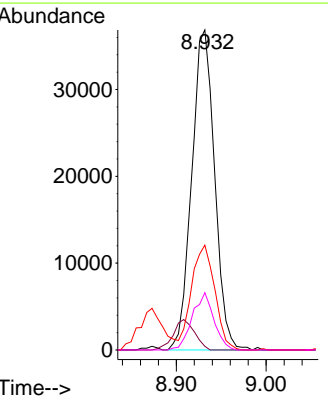
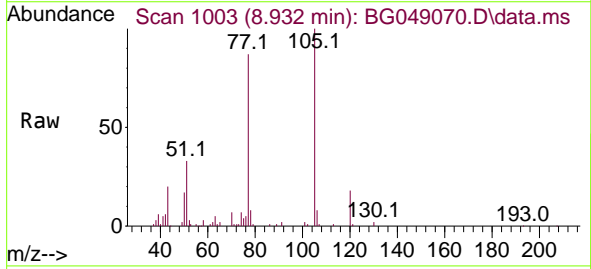
**Instrument :**  
 BNA\_G  
**ClientSampled :**  
 B4-0-2MS

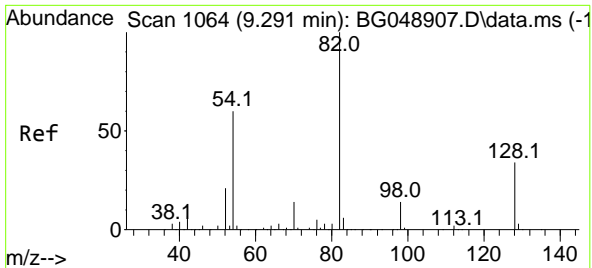
Tgt Ion	Resp	Lower	Upper
136	120664		
137	11.1	8.2	12.2
54	9.8	5.5	8.3#
68	3.5	2.3	3.5#



#22  
 Acetophenone  
 Concen: 17.78 ng  
 RT: 8.932 min Scan# 1003  
 Delta R.T. -0.004 min  
 Lab File: BG049070.D  
 Acq: 23 Jun 2021 20:54

Tgt Ion	Resp	Lower	Upper
105	65281		
105	100		
71	1.2	0.6	0.8#
51	32.7	26.6	40.0
120	17.9	16.2	24.4

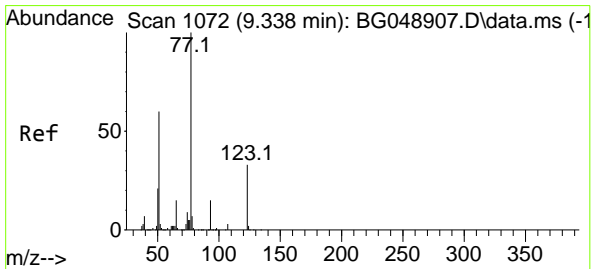
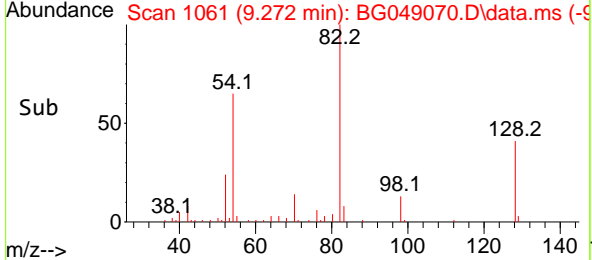
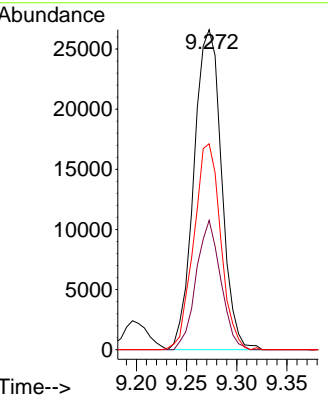
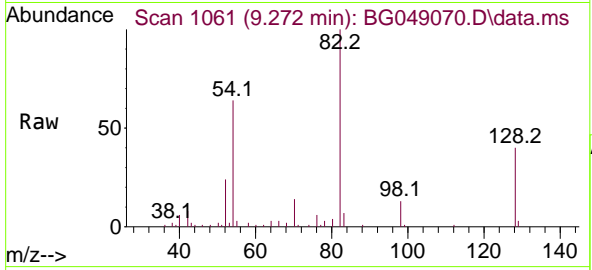




#23  
 Nitrobenzene-d5  
 Concen: 18.18 ng  
 RT: 9.272 min Scan# 1061  
 Delta R.T. -0.010 min  
 Lab File: BG049070.D  
 Acq: 23 Jun 2021 20:54

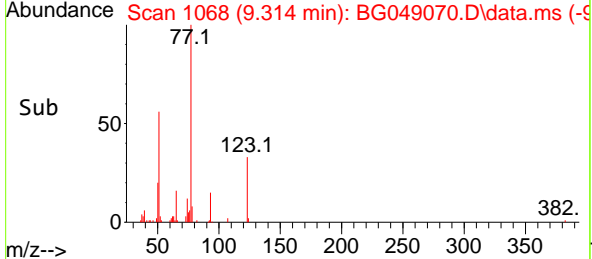
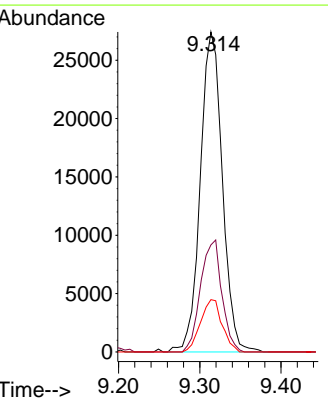
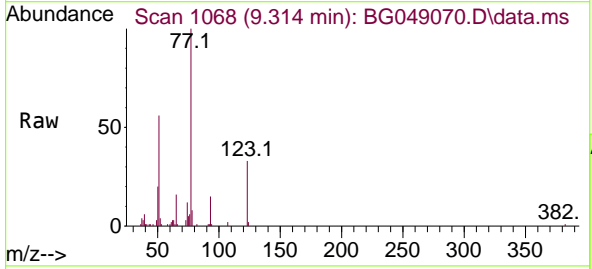
Instrument :  
 BNA\_G  
 ClientSampled :  
 B4-0-2MS

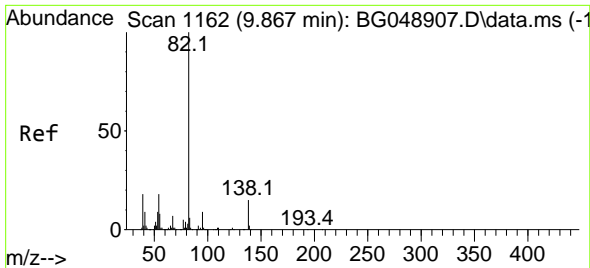
Tgt Ion	Resp	Lower	Upper
82	50862		
82	100		
128	40.4	29.8	44.6
54	64.4	45.8	68.8



#24  
 Nitrobenzene  
 Concen: 16.40 ng  
 RT: 9.314 min Scan# 1068  
 Delta R.T. -0.010 min  
 Lab File: BG049070.D  
 Acq: 23 Jun 2021 20:54

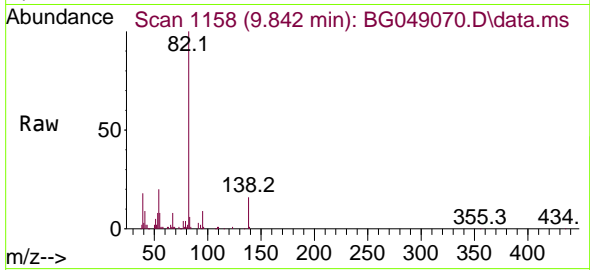
Tgt Ion	Resp	Lower	Upper
77	51711		
77	100		
123	33.5	27.5	41.3
65	16.4	12.6	18.8



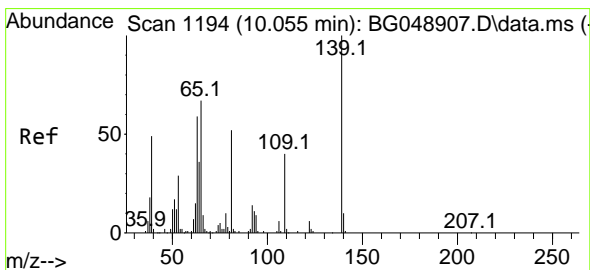
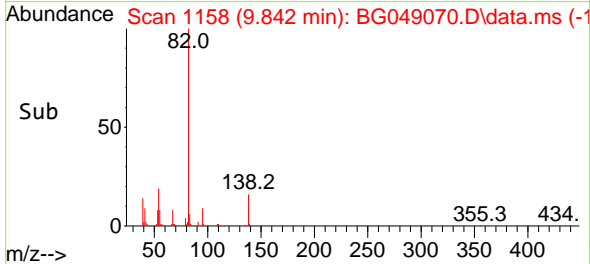
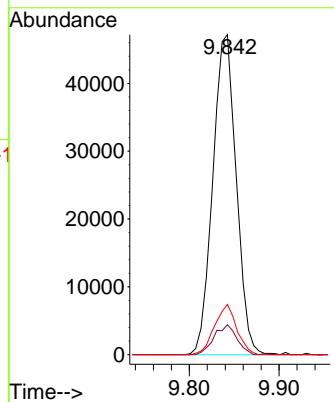


#25  
 Isophorone  
 Concen: 14.03 ng  
 RT: 9.842 min Scan# 1158  
 Delta R.T. -0.004 min  
 Lab File: BG049070.D  
 Acq: 23 Jun 2021 20:54

Instrument :  
 BNA\_G  
 ClientSampled :  
 B4-0-2MS

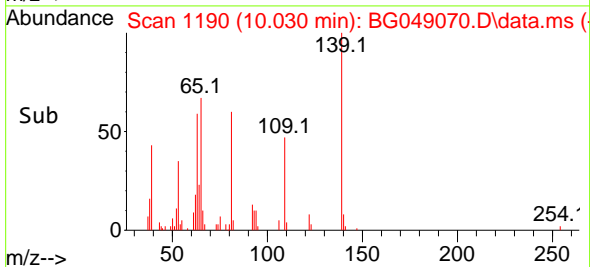
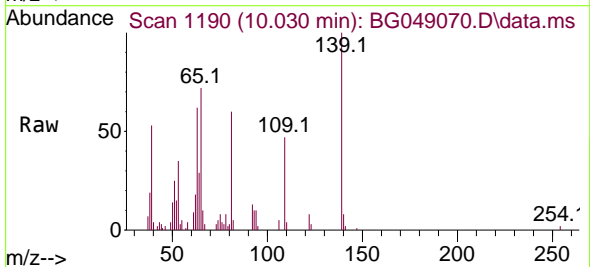
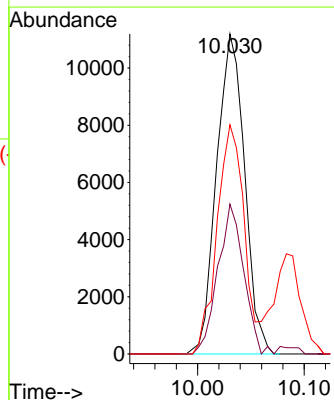


Tgt Ion	Resp	Lower	Upper
82	85546		
95	9.3	8.5	12.7
138	15.7	11.8	17.6

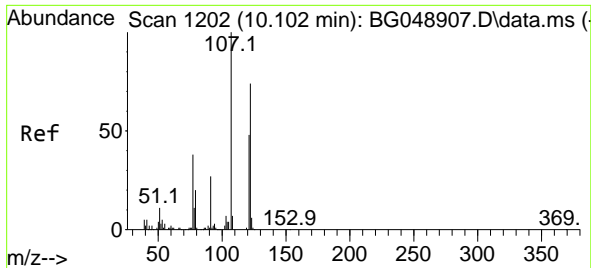


#26  
 2-Nitrophenol  
 Concen: 19.10 ng  
 RT: 10.030 min Scan# 1190  
 Delta R.T. -0.010 min  
 Lab File: BG049070.D  
 Acq: 23 Jun 2021 20:54

Tgt Ion	Resp	Lower	Upper
139	20423		
109	46.8	37.8	56.6
65	71.6	51.8	77.8



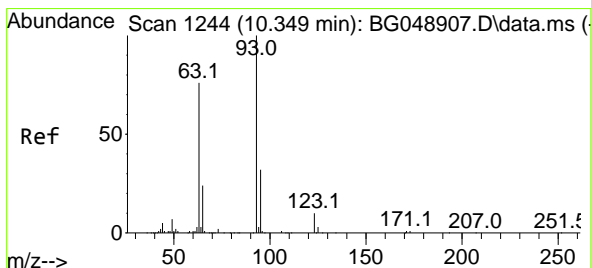
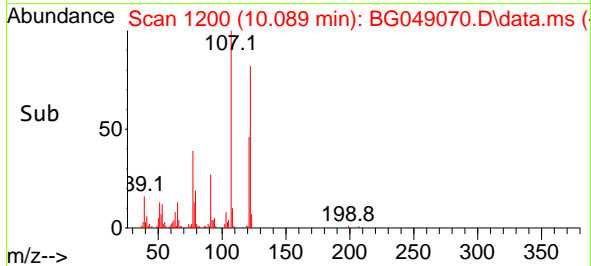
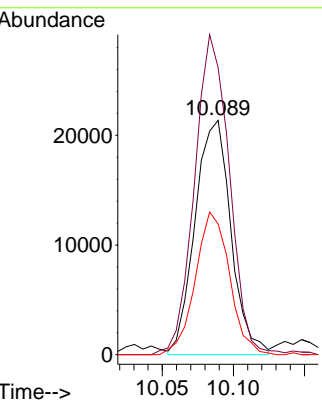
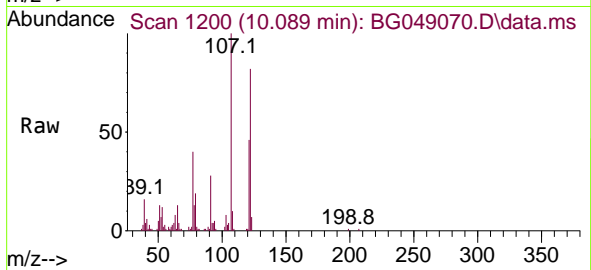




#27  
 2,4-Dimethylphenol  
 Concen: 19.36 ng  
 RT: 10.089 min Scan# 1200  
 Delta R.T. -0.004 min  
 Lab File: BG049070.D  
 Acq: 23 Jun 2021 20:54

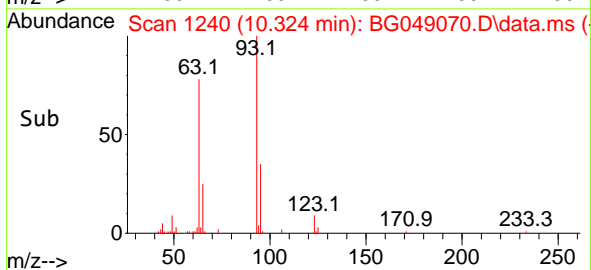
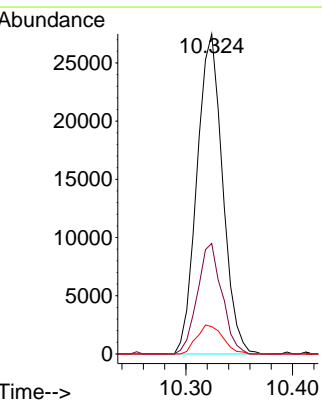
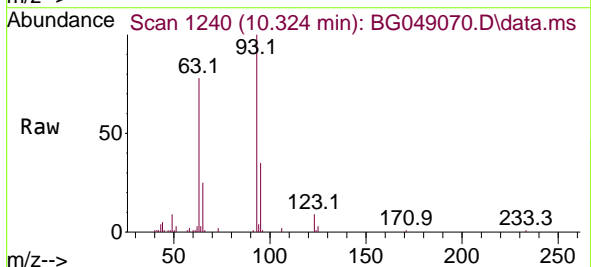
Instrument :  
 BNA\_G  
 ClientSampled :  
 B4-0-2MS

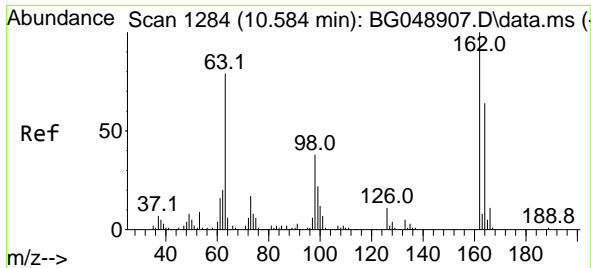
Tgt Ion	Resp	Lower	Upper
122	37536		
107	122.5	110.1	165.1
121	55.8	49.0	73.6



#28  
 bis(2-Chloroethoxy)methane  
 Concen: 16.21 ng  
 RT: 10.324 min Scan# 1240  
 Delta R.T. -0.010 min  
 Lab File: BG049070.D  
 Acq: 23 Jun 2021 20:54

Tgt Ion	Resp	Lower	Upper
93	45757		
95	34.5	22.2	33.4#
123	8.6	8.8	13.2#



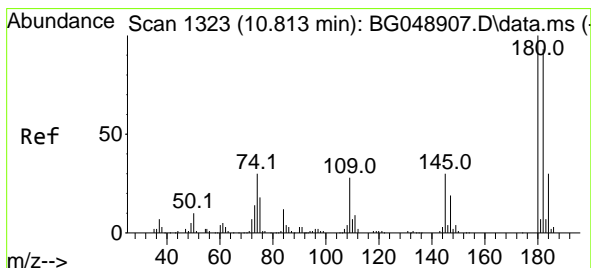
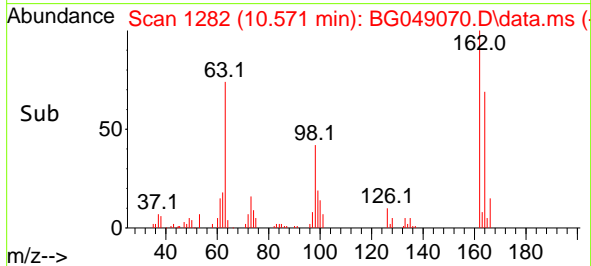
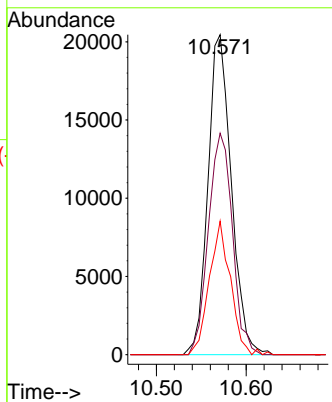
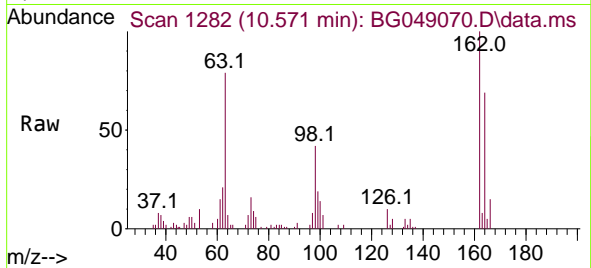


#29  
 2,4-Dichlorophenol  
 Concen: 17.00 ng  
 RT: 10.571 min Scan# 1282  
 Delta R.T. -0.010 min  
 Lab File: BG049070.D  
 Acq: 23 Jun 2021 20:54

Instrument :  
 BNA\_G  
 ClientSampled :  
 B4-0-2MS

Tgt Ion:162 Resp: 36978

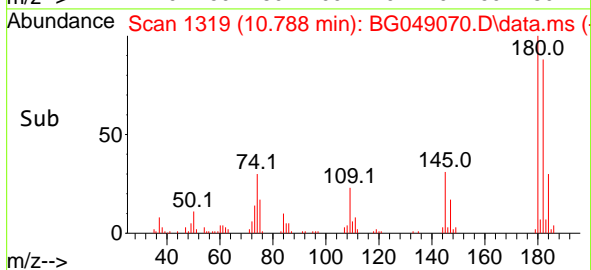
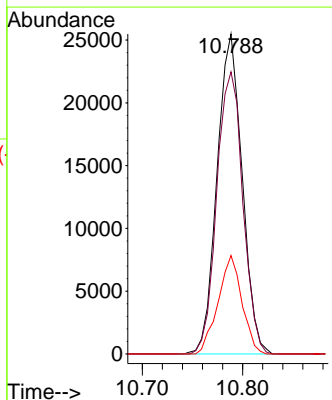
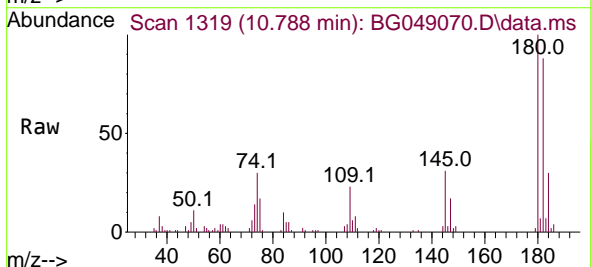
Ion	Ratio	Lower	Upper
162	100		
164	69.2	39.4	79.4
98	41.7	18.7	58.7

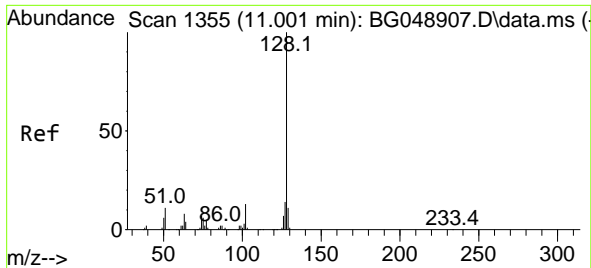


#30  
 1,2,4-Trichlorobenzene  
 Concen: 17.75 ng  
 RT: 10.788 min Scan# 1319  
 Delta R.T. -0.010 min  
 Lab File: BG049070.D  
 Acq: 23 Jun 2021 20:54

Tgt Ion:180 Resp: 44262

Ion	Ratio	Lower	Upper
180	100		
182	88.2	78.9	118.3
145	30.7	26.2	39.4

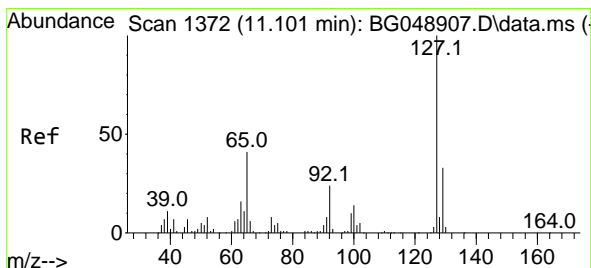
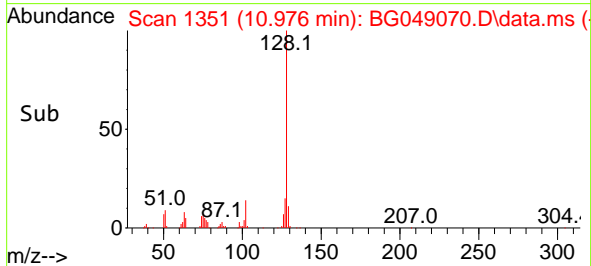
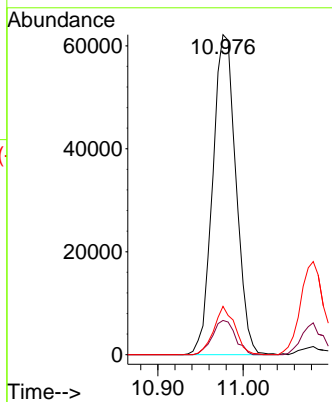
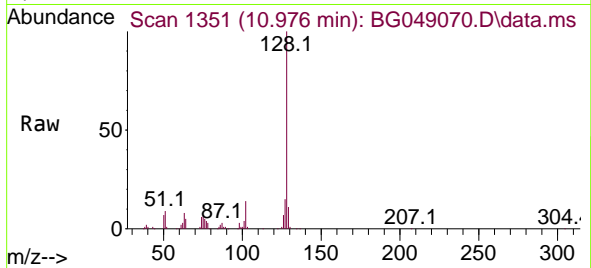




#31  
 Naphthalene  
 Concen: 16.38 ng  
 RT: 10.976 min Scan# 1351  
 Delta R.T. -0.010 min  
 Lab File: BG049070.D  
 Acq: 23 Jun 2021 20:54

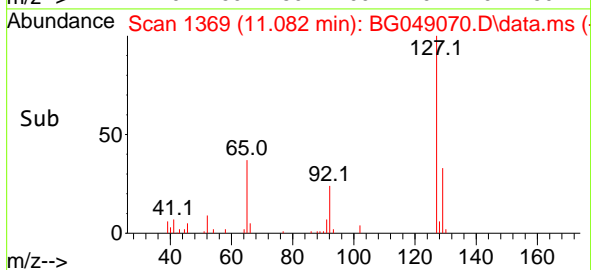
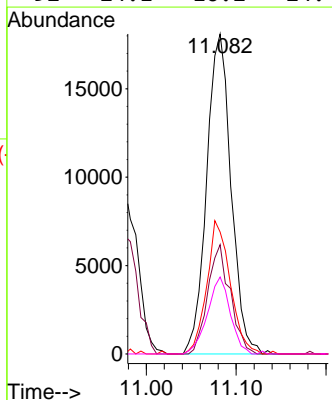
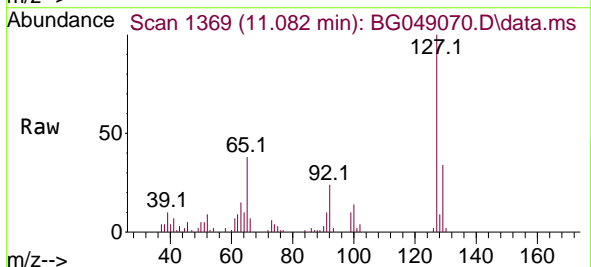
Instrument :  
 BNA\_G  
 ClientSampled :  
 B4-0-2MS

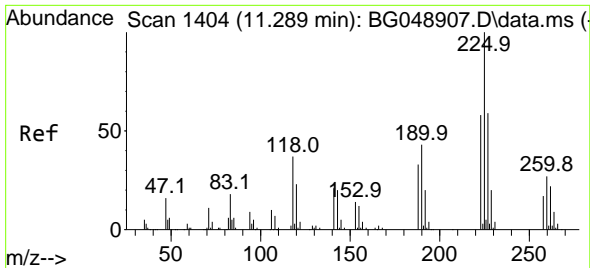
Tgt Ion	Resp	Lower	Upper
128	117717		
129	10.7	8.5	12.7
127	15.1	10.2	15.4



#33  
 4-Chloroaniline  
 Concen: 11.20 ng  
 RT: 11.082 min Scan# 1369  
 Delta R.T. -0.010 min  
 Lab File: BG049070.D  
 Acq: 23 Jun 2021 20:54

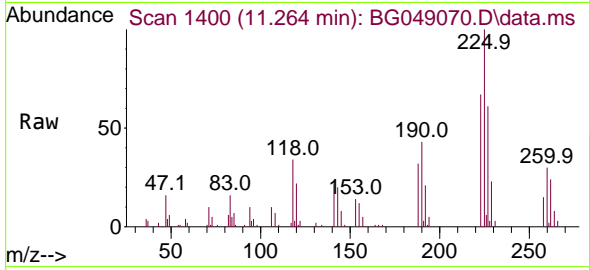
Tgt Ion	Resp	Lower	Upper
127	34189		
129	34.1	26.7	40.1
65	38.1	32.8	49.2
92	24.1	16.2	24.4



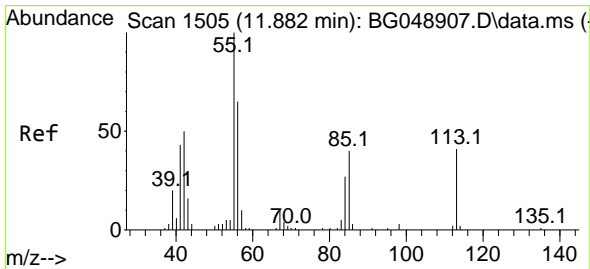
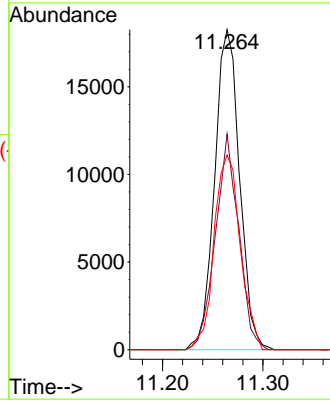
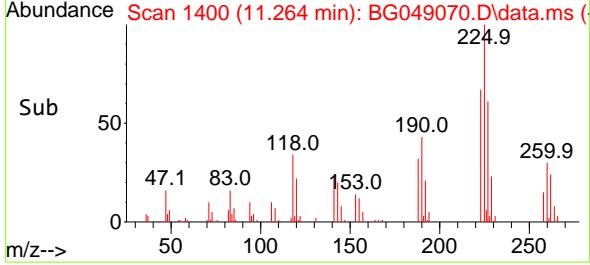


#34  
 Hexachlorobutadiene  
 Concen: 17.72 ng  
 RT: 11.264 min Scan# 1400  
 Delta R.T. -0.010 min  
 Lab File: BG049070.D  
 Acq: 23 Jun 2021 20:54

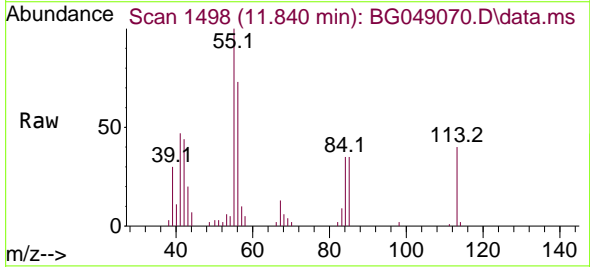
Instrument :  
 BNA\_G  
 ClientSampled :  
 B4-0-2MS



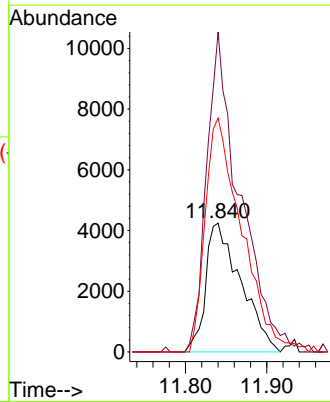
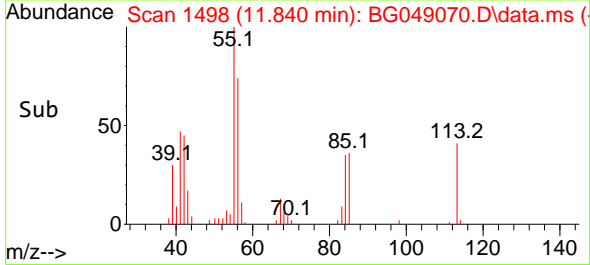
Tgt Ion:225 Resp: 31484  
 Ion Ratio Lower Upper  
 225 100  
 223 67.3 49.8 74.8  
 227 60.8 46.4 69.6

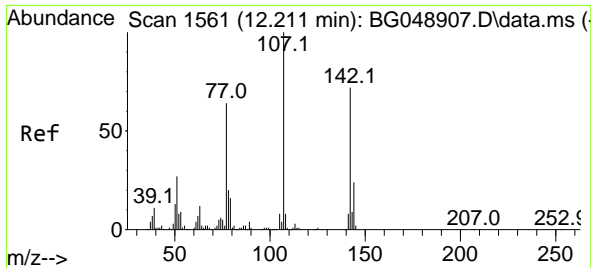


#35  
 Caprolactam  
 Concen: 20.25 ng  
 RT: 11.840 min Scan# 1498  
 Delta R.T. -0.022 min  
 Lab File: BG049070.D  
 Acq: 23 Jun 2021 20:54



Tgt Ion:113 Resp: 12734  
 Ion Ratio Lower Upper  
 113 100  
 55 248.4 113.8 153.8#  
 56 181.5 105.6 145.6#

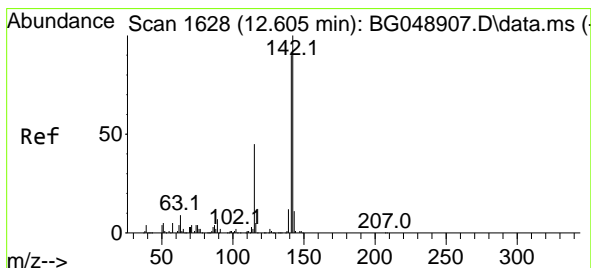
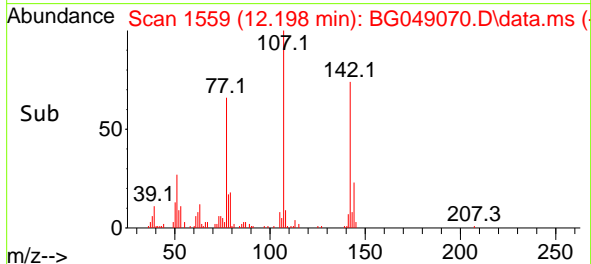
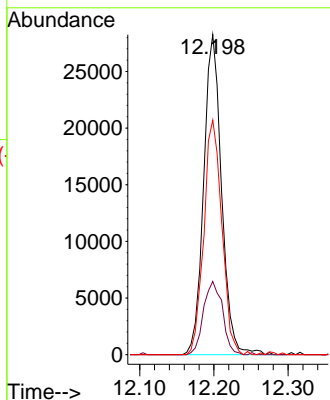
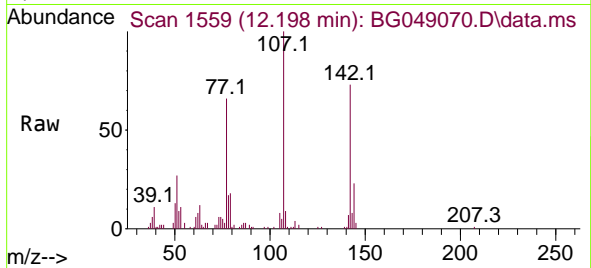




#36  
 4-Chloro-3-methylphenol  
 Concen: 17.85 ng  
 RT: 12.198 min Scan# 1559  
 Delta R.T. -0.010 min  
 Lab File: BG049070.D  
 Acq: 23 Jun 2021 20:54

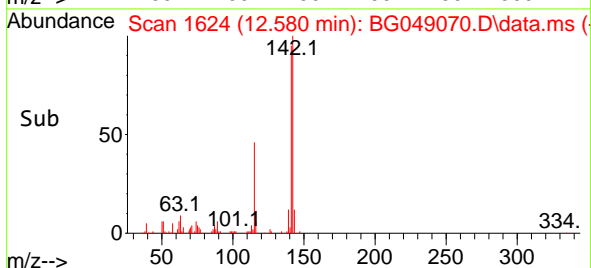
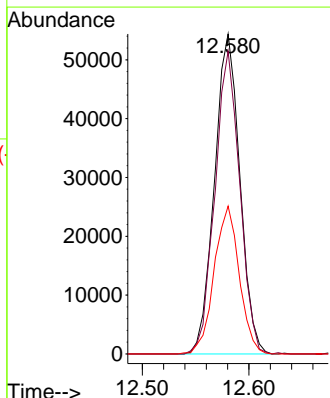
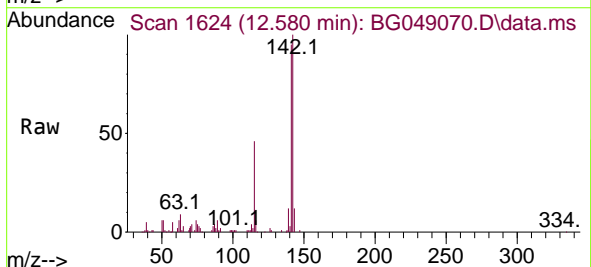
Instrument :  
 BNA\_G  
 ClientSampled :  
 B4-0-2MS

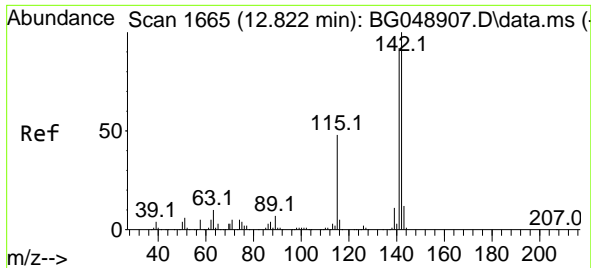
Tgt Ion	Resp	Lower	Upper
107	47454		
107	100		
144	22.9	24.8	37.2#
142	73.3	62.2	93.4



#37  
 2-Methylnaphthalene  
 Concen: 16.55 ng  
 RT: 12.580 min Scan# 1624  
 Delta R.T. -0.010 min  
 Lab File: BG049070.D  
 Acq: 23 Jun 2021 20:54

Tgt Ion	Resp	Lower	Upper
142	89847		
142	100		
141	94.6	68.8	103.2
115	46.2	36.4	54.6



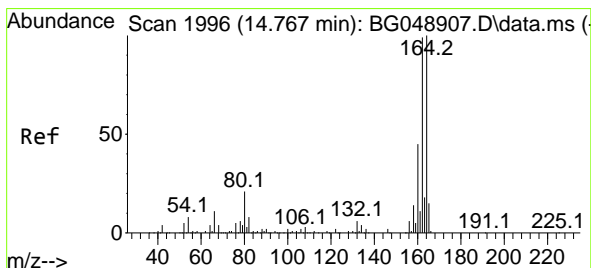
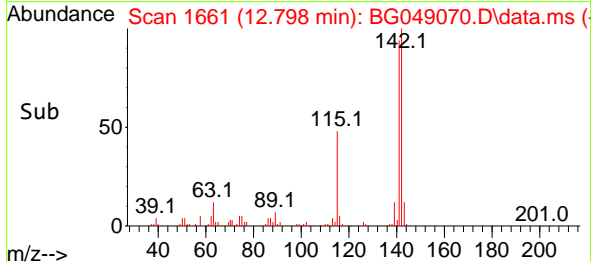
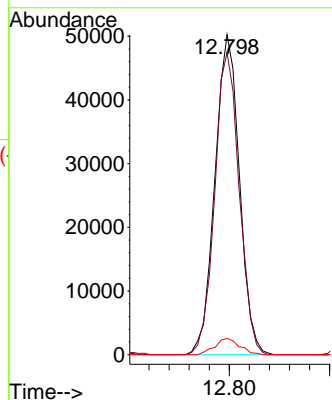
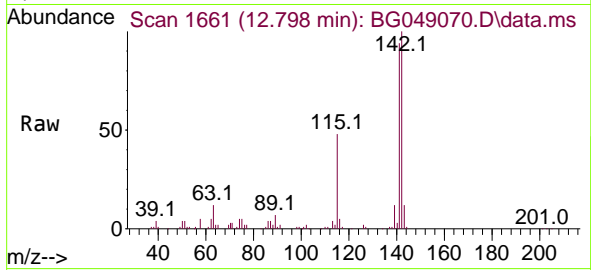


#38  
 1-Methylnaphthalene  
 Concen: 16.69 ng  
 RT: 12.798 min Scan# 1661  
 Delta R.T. -0.010 min  
 Lab File: BG049070.D  
 Acq: 23 Jun 2021 20:54

Instrument :  
 BNA\_G  
 ClientSampled :  
 B4-0-2MS

Tgt Ion:142 Resp: 85063

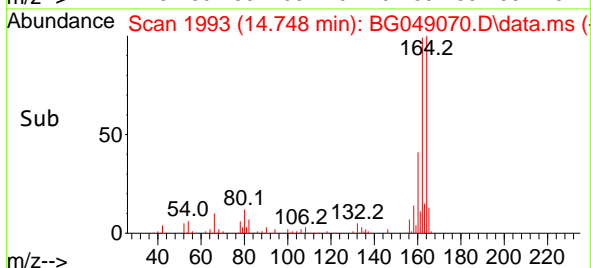
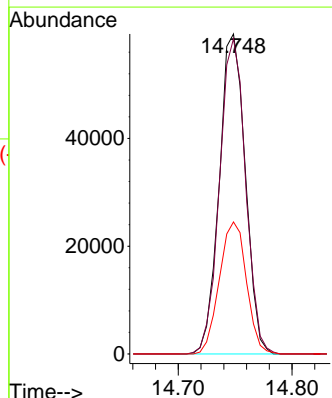
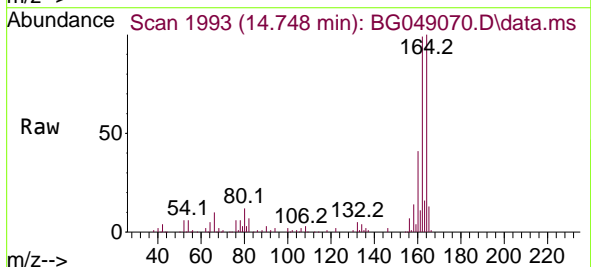
Ion	Ratio	Lower	Upper
142	100		
141	94.4	70.6	106.0
116	5.1	4.0	6.0

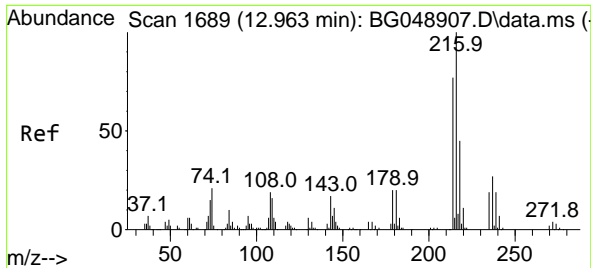


#39  
 Acenaphthene-d10  
 Concen: 20.00 ng  
 RT: 14.748 min Scan# 1993  
 Delta R.T. -0.010 min  
 Lab File: BG049070.D  
 Acq: 23 Jun 2021 20:54

Tgt Ion:164 Resp: 94372

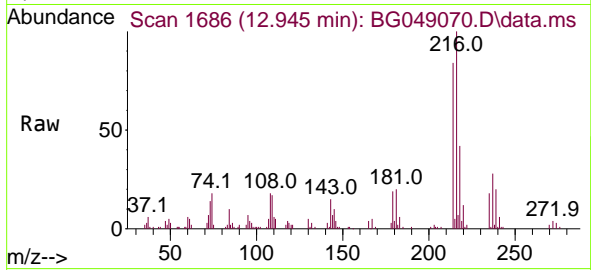
Ion	Ratio	Lower	Upper
164	100		
162	98.5	81.4	122.0
160	41.3	34.9	52.3





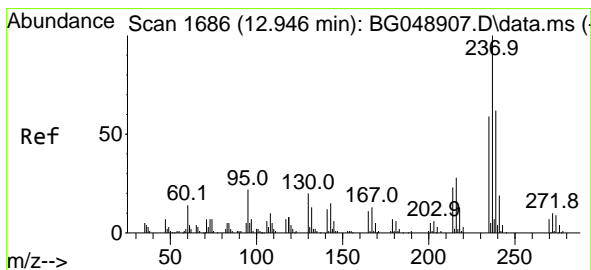
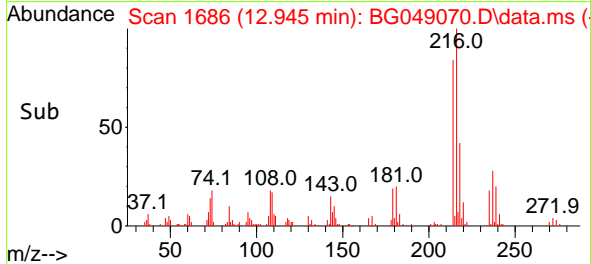
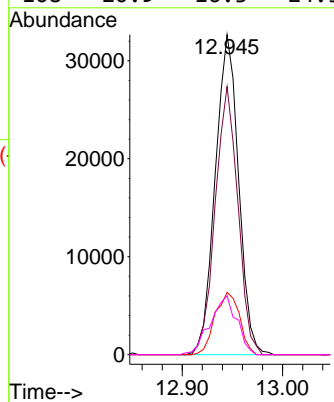
#40  
 1,2,4,5-Tetrachlorobenzene  
 Concen: 17.59 ng  
 RT: 12.945 min Scan# 1686  
 Delta R.T. -0.010 min  
 Lab File: BG049070.D  
 Acq: 23 Jun 2021 20:54

Instrument :  
 BNA\_G  
 ClientSampled :  
 B4-0-2MS

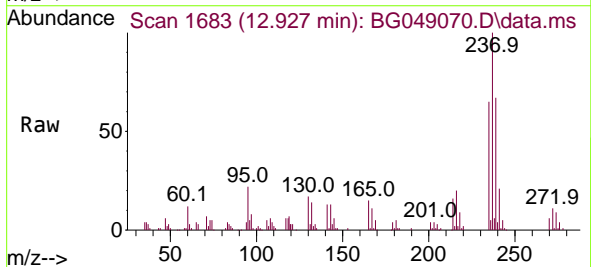


Tgt Ion:216 Resp: 52710

Ion	Ratio	Lower	Upper
216	100		
214	81.3	61.4	92.2
179	20.5	17.3	25.9
108	20.9	16.3	24.5

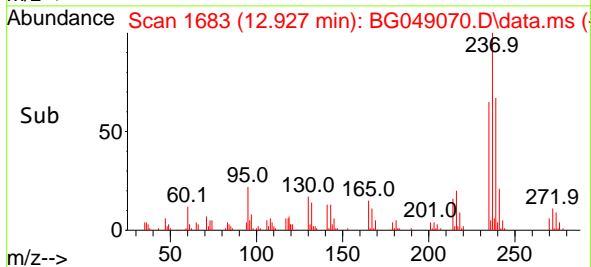
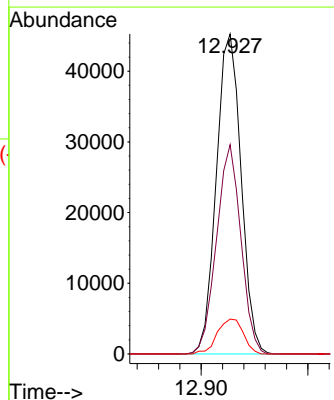


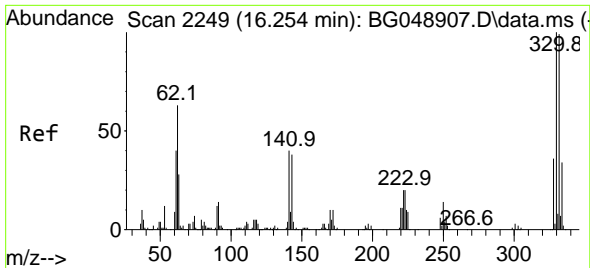
#41  
 Hexachlorocyclopentadiene  
 Concen: 37.83 ng  
 RT: 12.927 min Scan# 1683  
 Delta R.T. -0.010 min  
 Lab File: BG049070.D  
 Acq: 23 Jun 2021 20:54



Tgt Ion:237 Resp: 72876

Ion	Ratio	Lower	Upper
237	100		
235	65.4	36.6	76.6
272	10.9	0.0	32.5

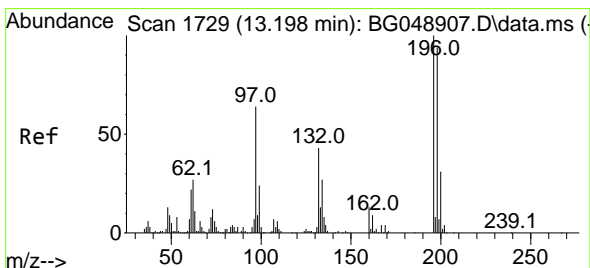
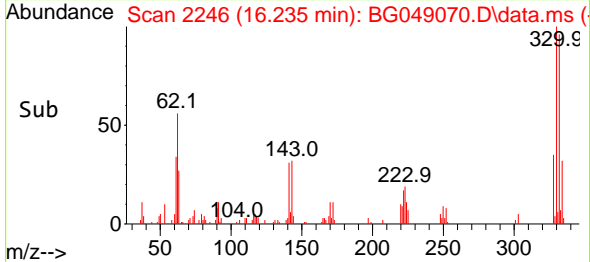
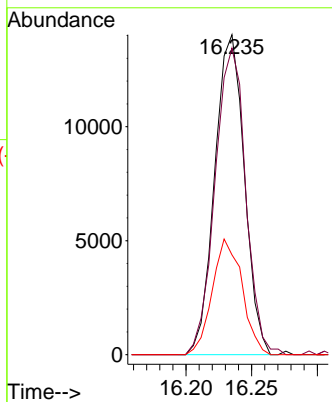
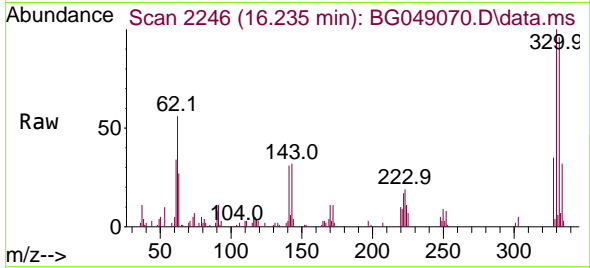




#42  
 2,4,6-Tribromophenol  
 Concen: 15.78 ng  
 RT: 16.235 min Scan# 2246  
 Delta R.T. -0.010 min  
 Lab File: BG049070.D  
 Acq: 23 Jun 2021 20:54

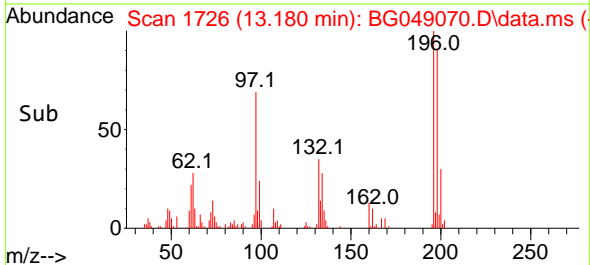
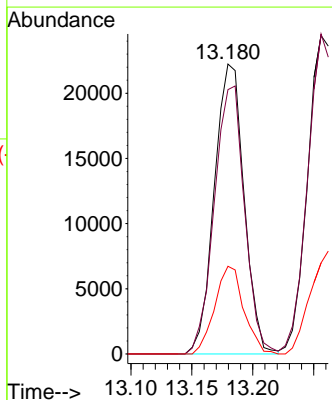
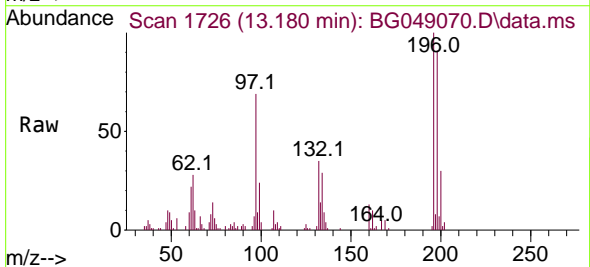
Instrument :  
 BNA\_G  
 ClientSampled :  
 B4-0-2MS

Tgt Ion	Resp	Lower	Upper
330	100		
332	99.0	77.3	115.9
141	36.4	35.6	53.4

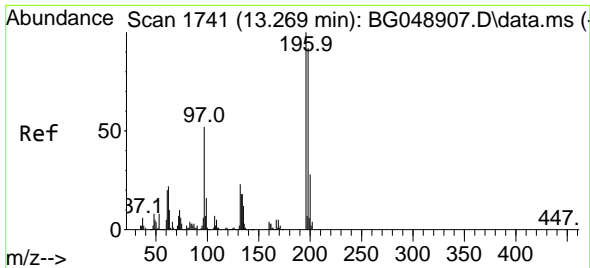


#43  
 2,4,6-Trichlorophenol  
 Concen: 18.82 ng  
 RT: 13.180 min Scan# 1726  
 Delta R.T. -0.010 min  
 Lab File: BG049070.D  
 Acq: 23 Jun 2021 20:54

Tgt Ion	Resp	Lower	Upper
196	100		
198	91.2	82.1	123.1
200	30.3	23.8	35.8

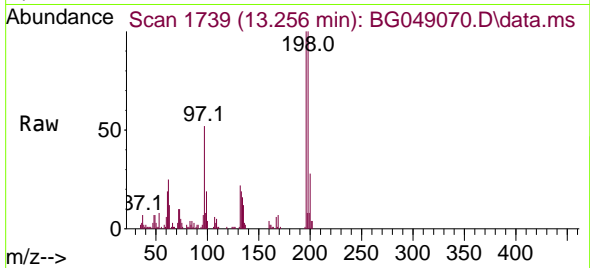






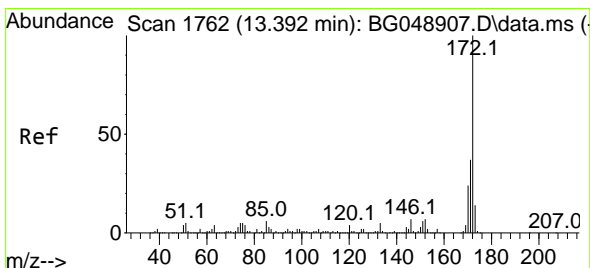
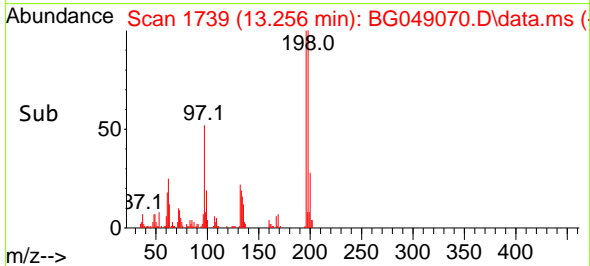
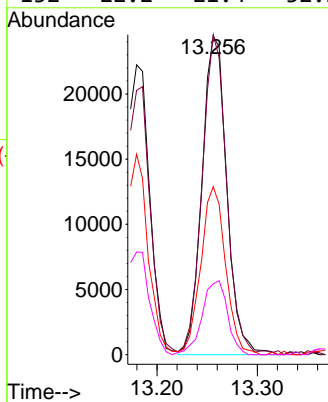
#44  
 2,4,5-Trichlorophenol  
 Concen: 20.32 ng  
 RT: 13.256 min Scan# 1739  
 Delta R.T. -0.016 min  
 Lab File: BG049070.D  
 Acq: 23 Jun 2021 20:54

Instrument :  
 BNA\_G  
 ClientSampled :  
 B4-0-2MS

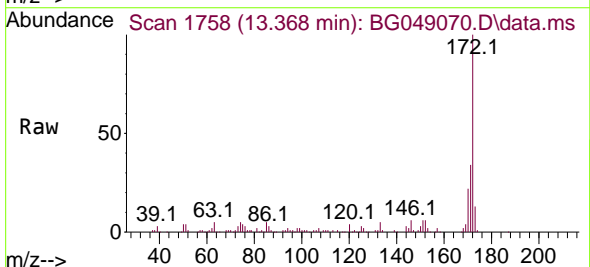


Tgt Ion:196 Resp: 42126

Ion	Ratio	Lower	Upper
196	100		
198	100.5	87.4	131.0
97	52.7	43.3	64.9
132	22.2	21.4	32.2

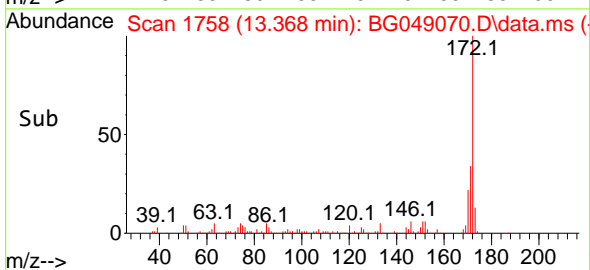
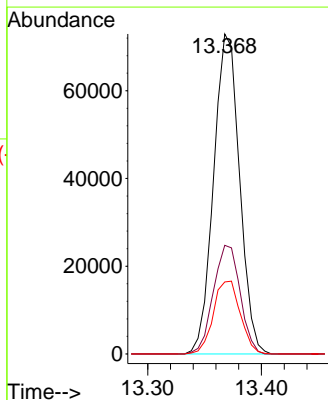


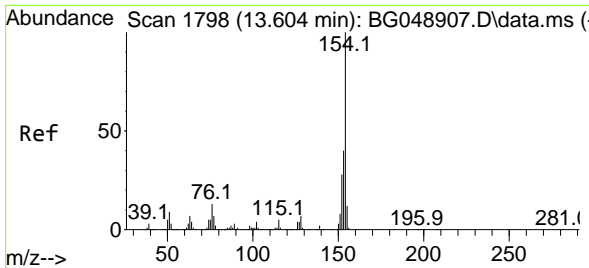
#45  
 2-Fluorobiphenyl  
 Concen: 17.30 ng  
 RT: 13.368 min Scan# 1758  
 Delta R.T. -0.016 min  
 Lab File: BG049070.D  
 Acq: 23 Jun 2021 20:54



Tgt Ion:172 Resp: 115540

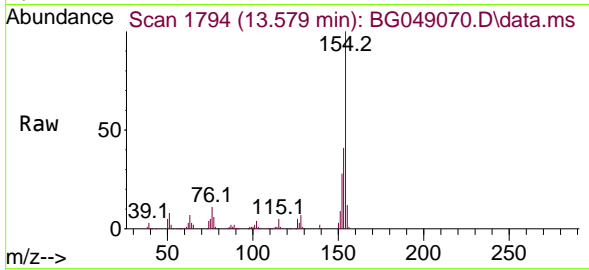
Ion	Ratio	Lower	Upper
172	100		
171	33.9	28.6	43.0
170	22.5	18.6	27.8





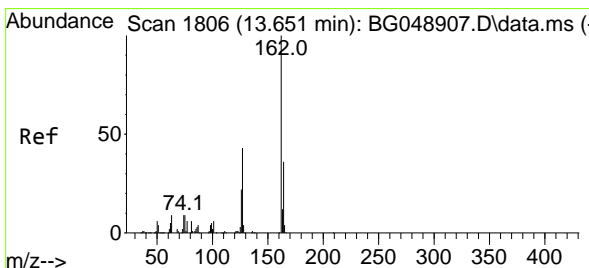
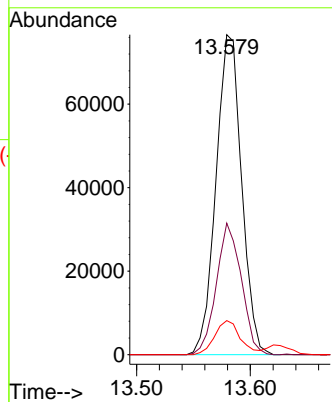
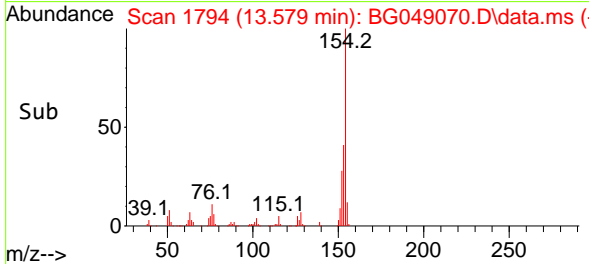
#46  
 1,1'-Biphenyl  
 Concen: 17.24 ng  
 RT: 13.579 min Scan# 1794  
 Delta R.T. -0.010 min  
 Lab File: BG049070.D  
 Acq: 23 Jun 2021 20:54

Instrument :  
 BNA\_G  
 ClientSampled :  
 B4-0-2MS

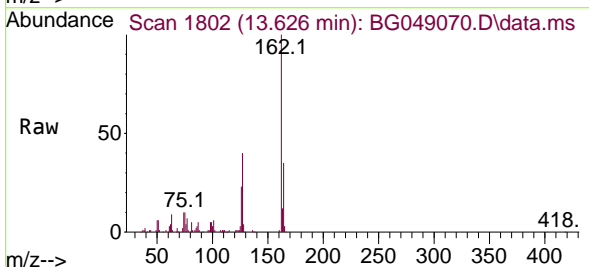


Tgt Ion:154 Resp: 119973

Ion	Ratio	Lower	Upper
154	100		
153	41.1	20.5	60.5
76	10.6	0.0	29.3

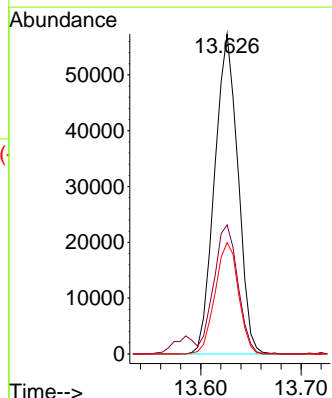
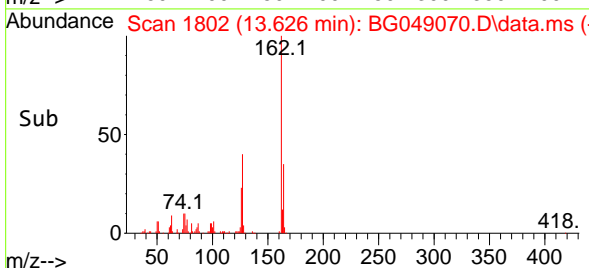


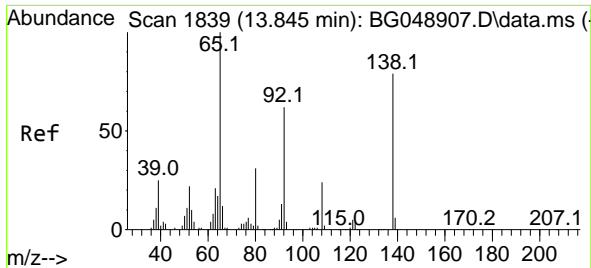
#47  
 2-Chloronaphthalene  
 Concen: 16.63 ng  
 RT: 13.626 min Scan# 1802  
 Delta R.T. -0.010 min  
 Lab File: BG049070.D  
 Acq: 23 Jun 2021 20:54



Tgt Ion:162 Resp: 92386

Ion	Ratio	Lower	Upper
162	100		
127	40.4	32.7	49.1
164	34.8	27.0	40.4



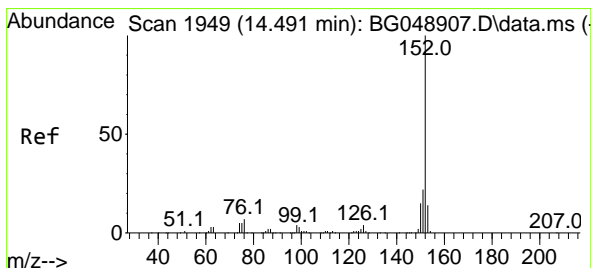
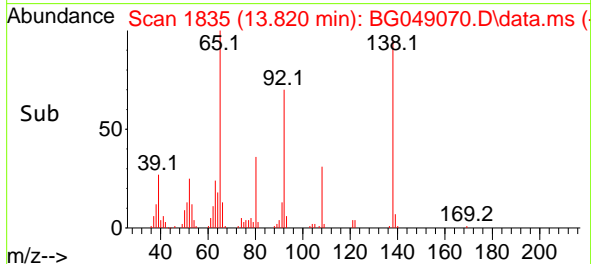
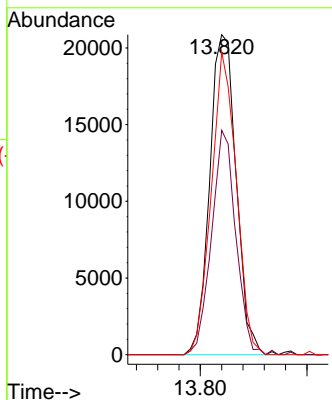
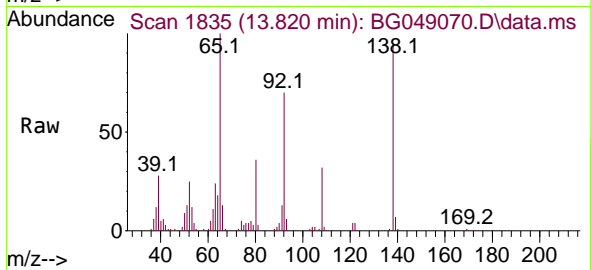


#48  
 2-Nitroaniline  
 Concen: 20.72 ng  
 RT: 13.820 min Scan# 1835  
 Delta R.T. -0.010 min  
 Lab File: BG049070.D  
 Acq: 23 Jun 2021 20:54

**Instrument :**  
 BNA\_G  
**ClientSampled :**  
 B4-0-2MS

Tgt Ion: 65 Resp: 35983

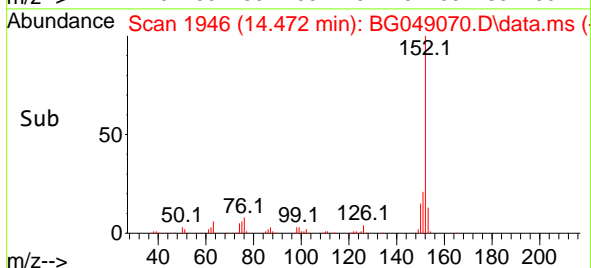
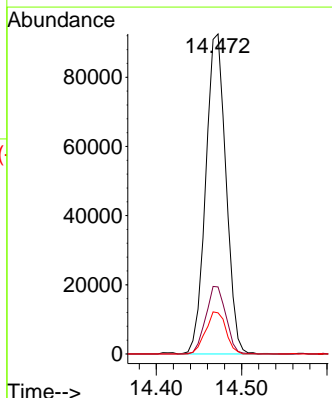
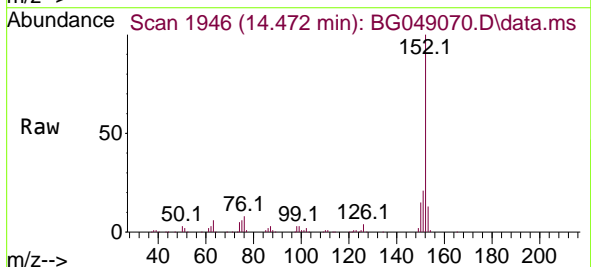
Ion	Ratio	Lower	Upper
65	100		
92	70.1	47.2	70.8
138	94.6	68.0	102.0

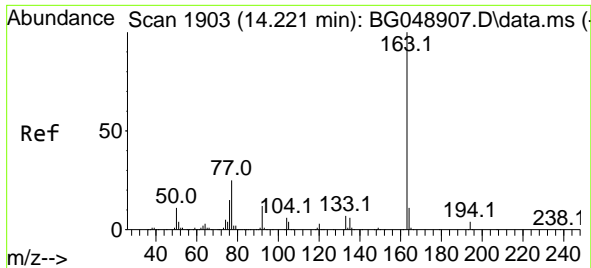


#49  
 Acenaphthylene  
 Concen: 16.43 ng  
 RT: 14.472 min Scan# 1946  
 Delta R.T. -0.010 min  
 Lab File: BG049070.D  
 Acq: 23 Jun 2021 20:54

Tgt Ion: 152 Resp: 152102

Ion	Ratio	Lower	Upper
152	100		
151	21.0	18.2	27.4
153	12.9	11.7	17.5

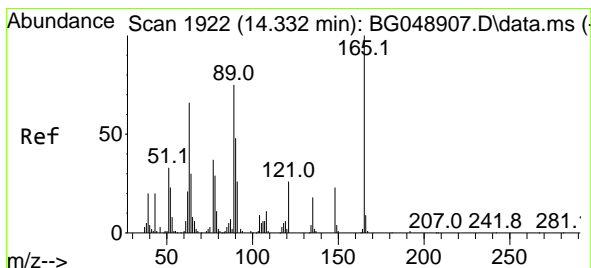
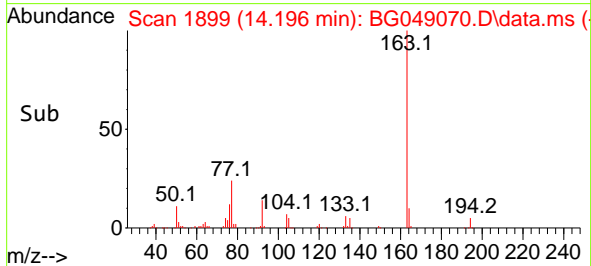
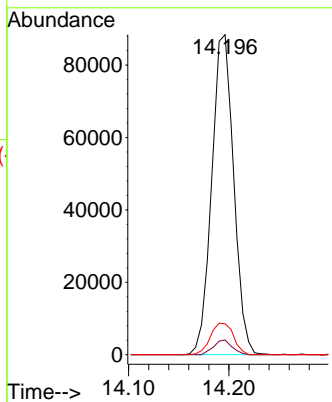
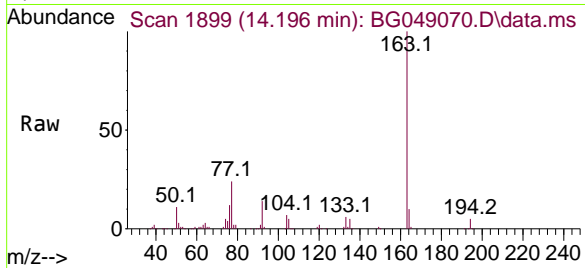




#50  
 Dimethylphthalate  
 Concen: 18.25 ng  
 RT: 14.196 min Scan# 1899  
 Delta R.T. -0.010 min  
 Lab File: BG049070.D  
 Acq: 23 Jun 2021 20:54

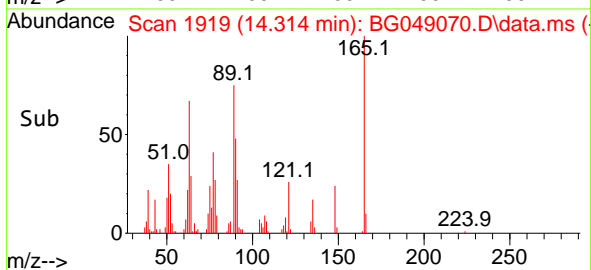
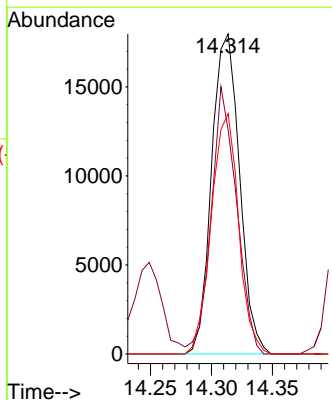
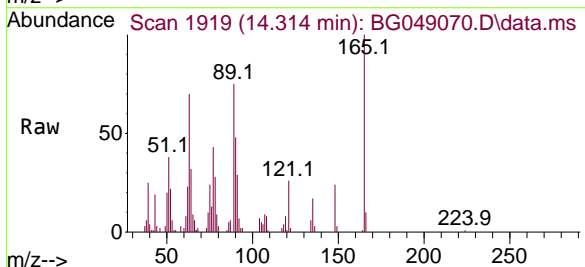
**Instrument :**  
 BNA\_G  
**ClientSampled :**  
 B4-0-2MS

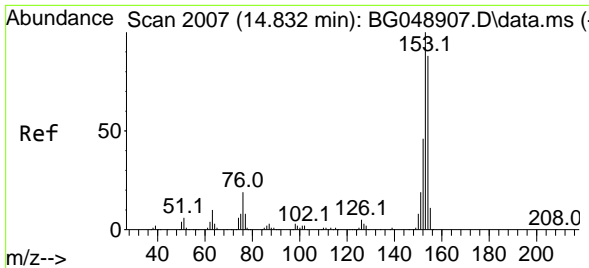
Tgt Ion	Resp	Lower	Upper
163	134155		
194	4.6	3.0	4.6#
164	9.7	8.6	12.8



#51  
 2,6-Dinitrotoluene  
 Concen: 19.11 ng  
 RT: 14.314 min Scan# 1919  
 Delta R.T. -0.010 min  
 Lab File: BG049070.D  
 Acq: 23 Jun 2021 20:54

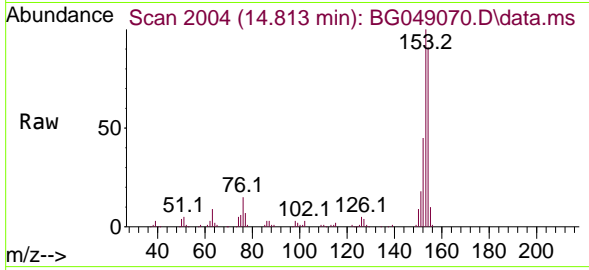
Tgt Ion	Resp	Lower	Upper
165	28613		
63	70.1	63.3	94.9
89	75.1	63.4	95.0





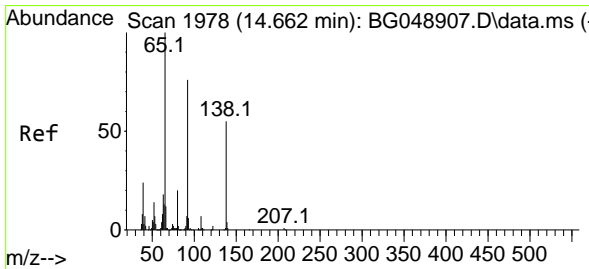
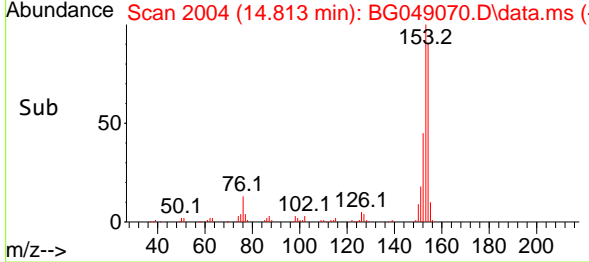
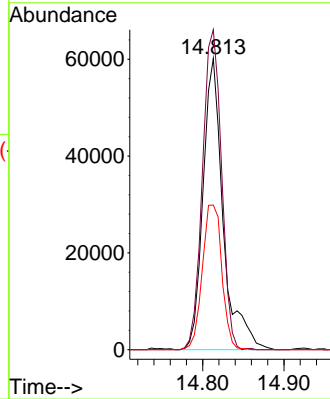
#52  
 Acenaphthene  
 Concen: 17.34 ng  
 RT: 14.813 min Scan# 2004  
 Delta R.T. -0.010 min  
 Lab File: BG049070.D  
 Acq: 23 Jun 2021 20:54

Instrument :  
 BNA\_G  
 ClientSampleId :  
 B4-0-2MS



Tgt Ion:154 Resp: 103448

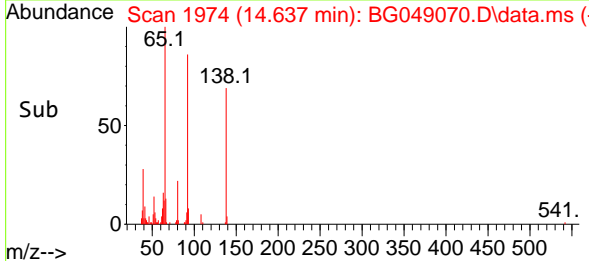
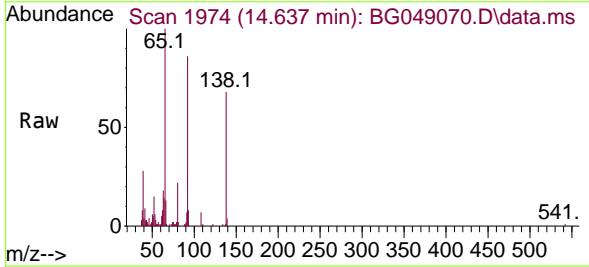
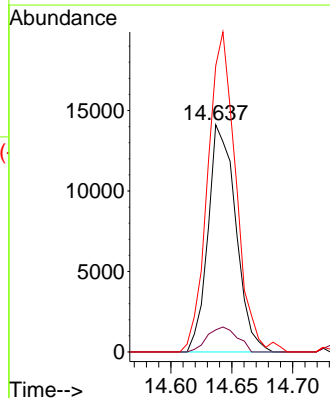
Ion	Ratio	Lower	Upper
154	100		
153	109.9	87.0	130.4
152	49.6	40.1	60.1

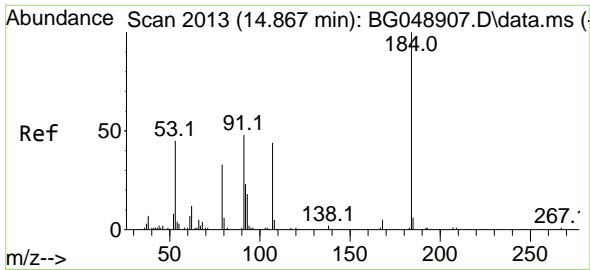


#53  
 3-Nitroaniline  
 Concen: 14.73 ng  
 RT: 14.637 min Scan# 1974  
 Delta R.T. -0.016 min  
 Lab File: BG049070.D  
 Acq: 23 Jun 2021 20:54

Tgt Ion:138 Resp: 22329

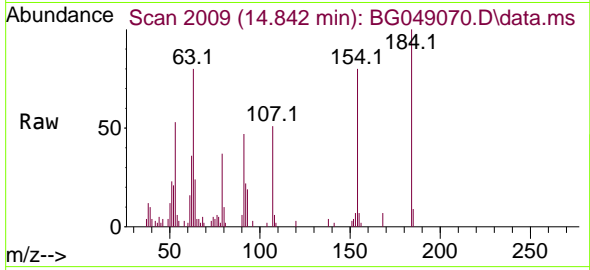
Ion	Ratio	Lower	Upper
138	100		
108	9.7	8.3	12.5
92	125.9	96.4	144.6



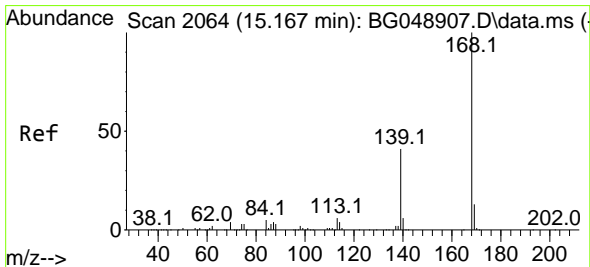
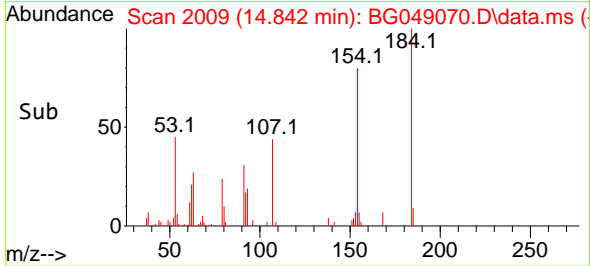
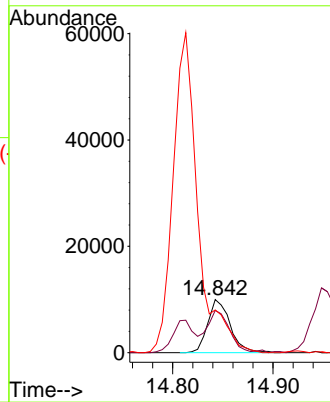


#54  
 2,4-Dinitrophenol  
 Concen: 22.41 ng  
 RT: 14.842 min Scan# 2009  
 Delta R.T. -0.010 min  
 Lab File: BG049070.D  
 Acq: 23 Jun 2021 20:54

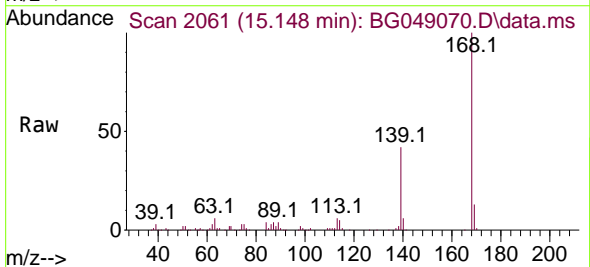
Instrument :  
 BNA\_G  
 ClientSampled :  
 B4-0-2MS



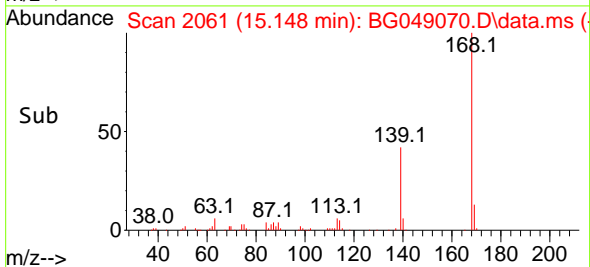
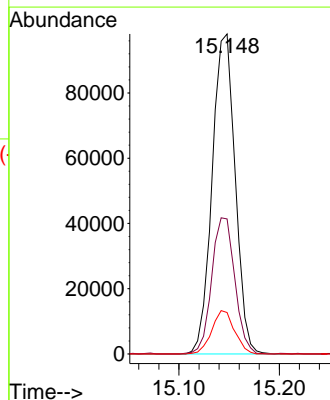
Tgt Ion:184 Resp: 15540  
 Ion Ratio Lower Upper  
 184 100  
 63 79.7 68.3 102.5  
 154 80.4 62.6 93.8

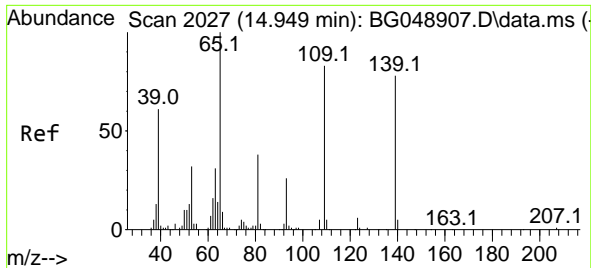


#55  
 Dibenzofuran  
 Concen: 16.87 ng  
 RT: 15.148 min Scan# 2061  
 Delta R.T. -0.004 min  
 Lab File: BG049070.D  
 Acq: 23 Jun 2021 20:54



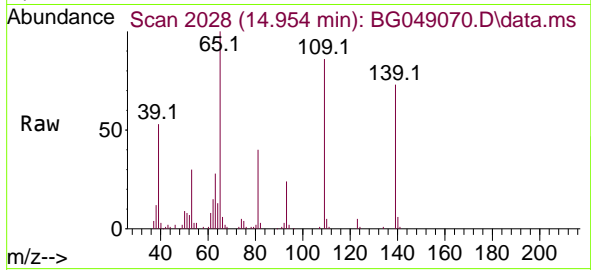
Tgt Ion:168 Resp: 156506  
 Ion Ratio Lower Upper  
 168 100  
 139 42.2 33.4 50.2  
 169 13.0 12.3 18.5



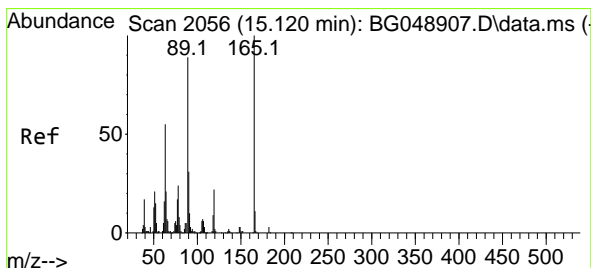
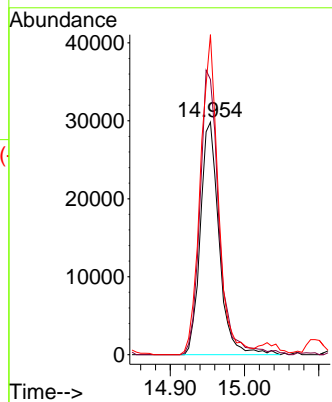
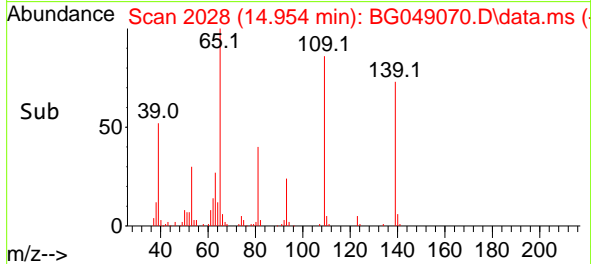


#56  
 4-Nitrophenol  
 Concen: 42.48 ng  
 RT: 14.954 min Scan# 2028  
 Delta R.T. -0.016 min  
 Lab File: BG049070.D  
 Acq: 23 Jun 2021 20:54

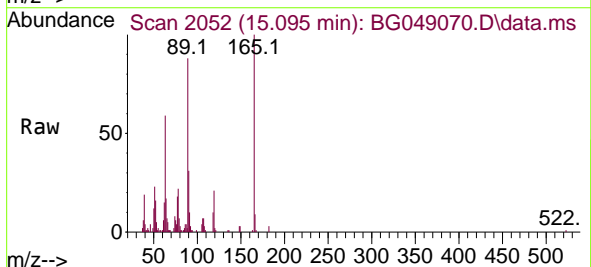
Instrument :  
 BNA\_G  
 ClientSampled :  
 B4-0-2MS



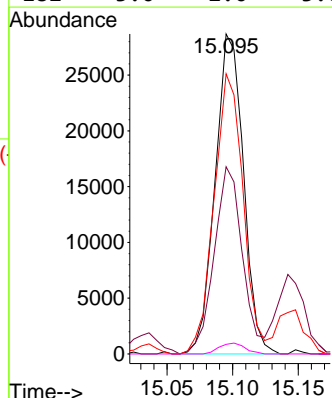
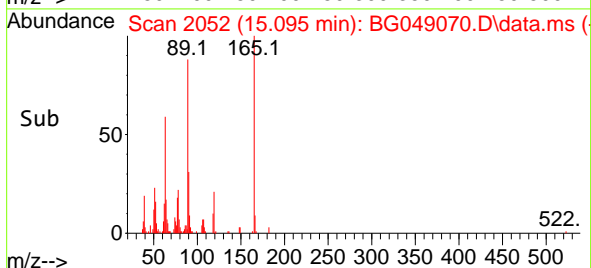
Tgt Ion:139 Resp: 52487  
 Ion Ratio Lower Upper  
 139 100  
 109 118.4 116.3 156.3  
 65 137.7 105.0 145.0

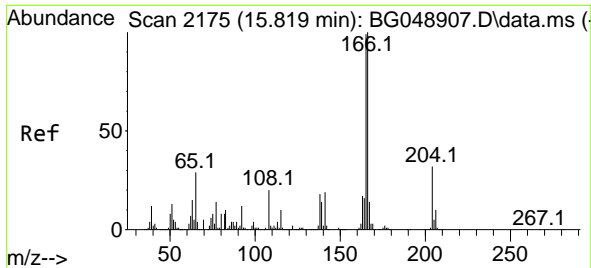


#57  
 2,4-Dinitrotoluene  
 Concen: 23.38 ng  
 RT: 15.095 min Scan# 2052  
 Delta R.T. -0.016 min  
 Lab File: BG049070.D  
 Acq: 23 Jun 2021 20:54



Tgt Ion:165 Resp: 42985  
 Ion Ratio Lower Upper  
 165 100  
 63 58.5 48.0 72.0  
 89 87.6 65.4 98.0  
 182 3.0 2.0 3.0#

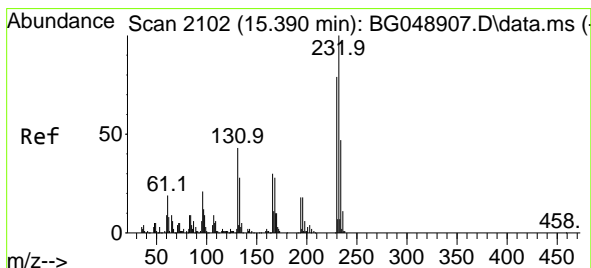
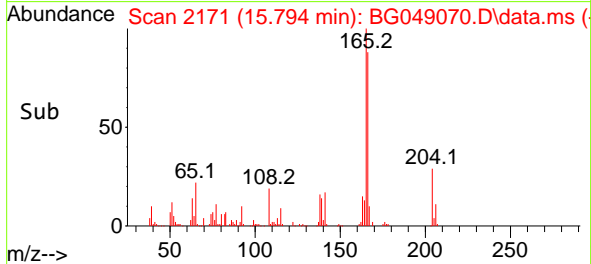
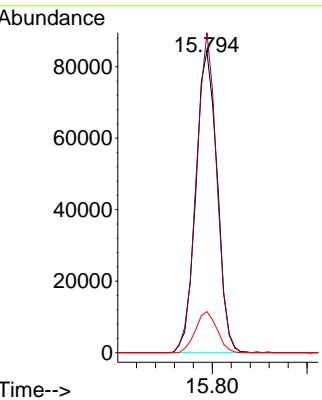
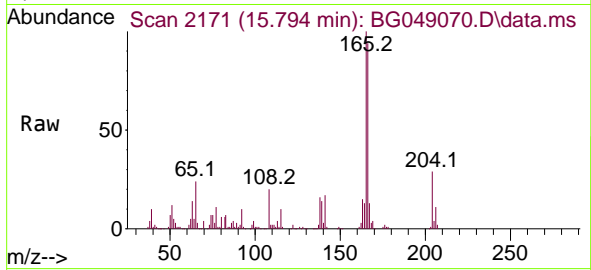




#58  
 Fluorene  
 Concen: 17.30 ng  
 RT: 15.794 min Scan# 2171  
 Delta R.T. -0.010 min  
 Lab File: BG049070.D  
 Acq: 23 Jun 2021 20:54

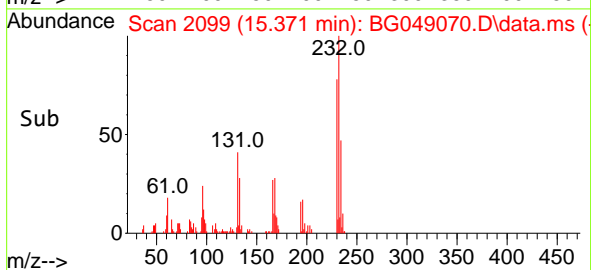
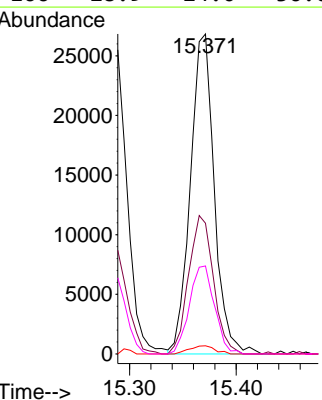
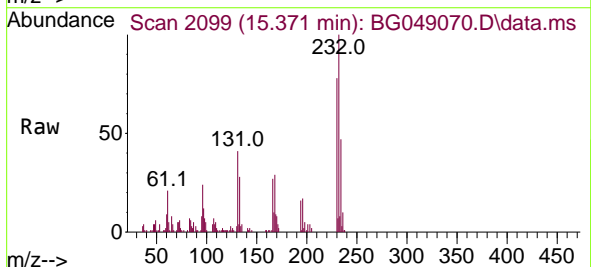
**Instrument :**  
 BNA\_G  
**ClientSampled :**  
 B4-0-2MS

Tgt Ion	Resp	Lower	Upper
166	131249		
165	106.2	77.7	116.5
167	13.7	10.8	16.2

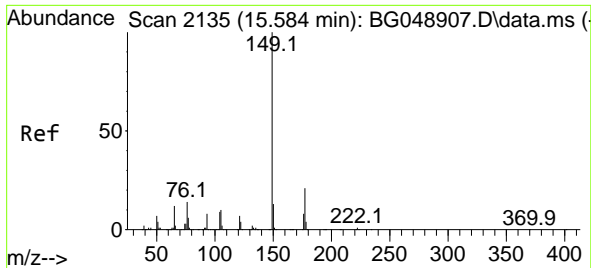


#59  
 2,3,4,6-Tetrachlorophenol  
 Concen: 19.98 ng  
 RT: 15.371 min Scan# 2099  
 Delta R.T. -0.010 min  
 Lab File: BG049070.D  
 Acq: 23 Jun 2021 20:54

Tgt Ion	Resp	Lower	Upper
232	41932		
232	100		
131	44.9	37.2	55.8
130	2.7	2.8	4.2#
166	28.9	24.0	36.0





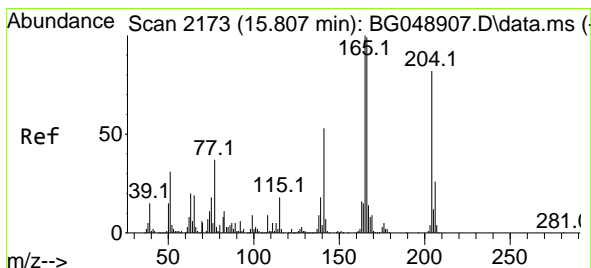
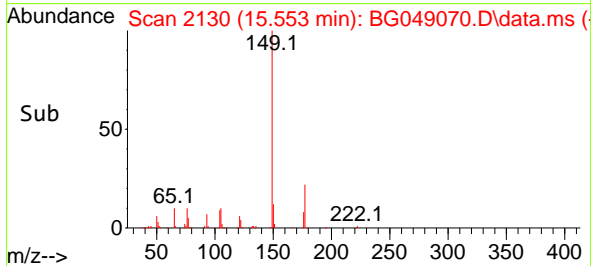
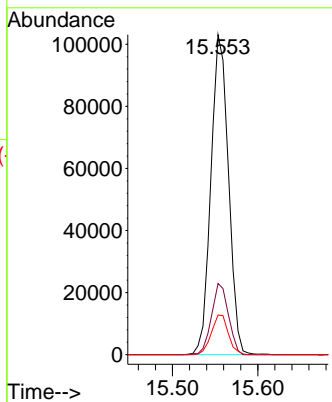
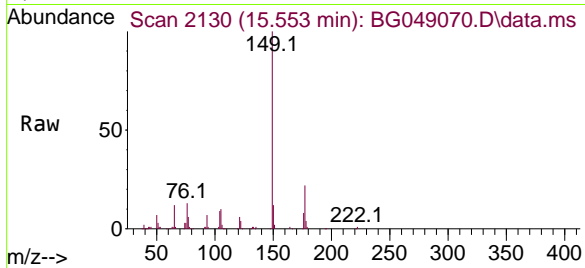


#60  
 Diethylphthalate  
 Concen: 18.53 ng  
 RT: 15.553 min Scan# 2130  
 Delta R.T. -0.016 min  
 Lab File: BG049070.D  
 Acq: 23 Jun 2021 20:54

Instrument :  
 BNA\_G  
 ClientSampleId :  
 B4-0-2MS

Tgt Ion:149 Resp: 147499

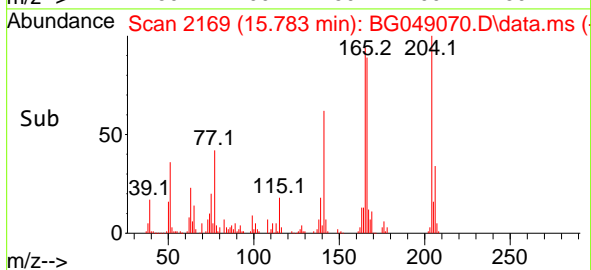
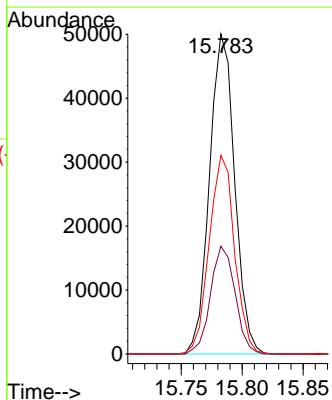
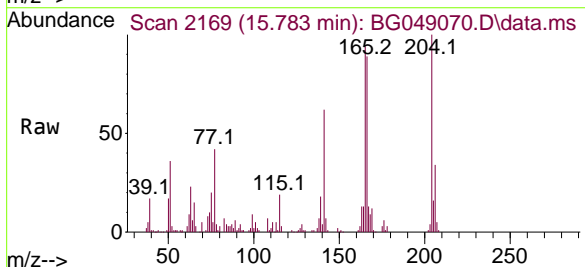
Ion	Ratio	Lower	Upper
149	100		
177	22.2	19.0	28.6
150	12.4	10.2	15.4

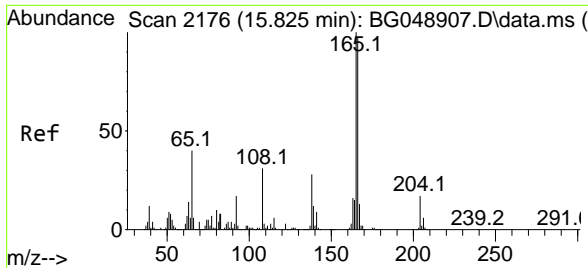


#61  
 4-Chlorophenyl-phenylether  
 Concen: 18.12 ng  
 RT: 15.783 min Scan# 2169  
 Delta R.T. -0.010 min  
 Lab File: BG049070.D  
 Acq: 23 Jun 2021 20:54

Tgt Ion:204 Resp: 71878

Ion	Ratio	Lower	Upper
204	100		
206	33.6	24.6	37.0
141	62.1	47.8	71.8



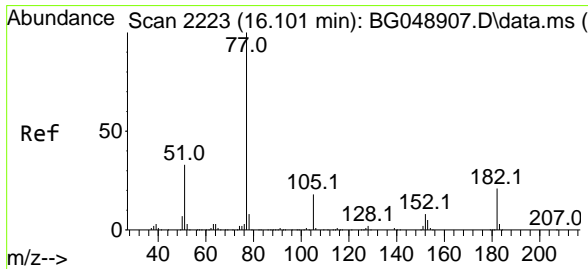
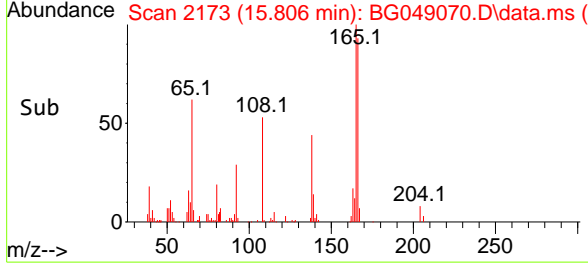
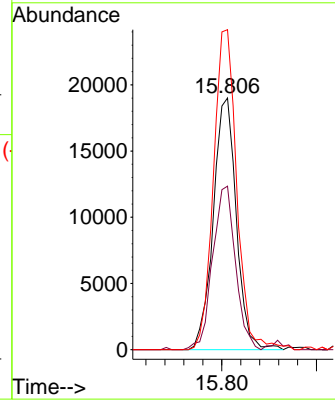
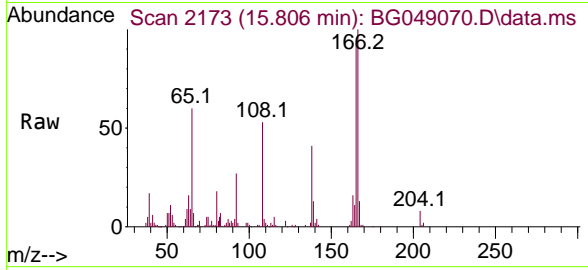


#62  
 4-Nitroaniline  
 Concen: 20.94 ng  
 RT: 15.806 min Scan# 2173  
 Delta R.T. -0.010 min  
 Lab File: BG049070.D  
 Acq: 23 Jun 2021 20:54

Instrument :  
 BNA\_G  
 ClientSampleId :  
 B4-0-2MS

Tgt Ion:138 Resp: 32099

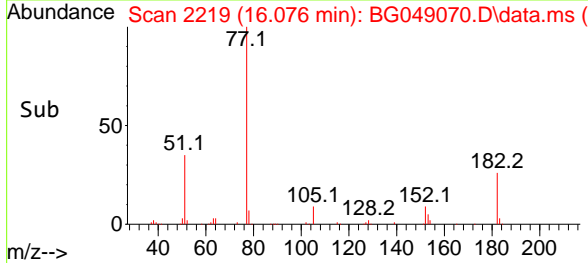
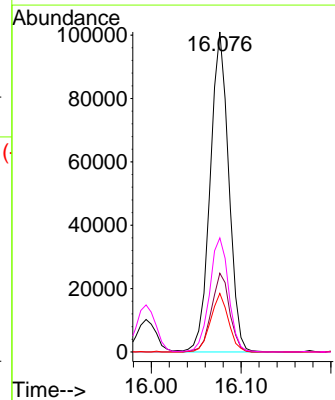
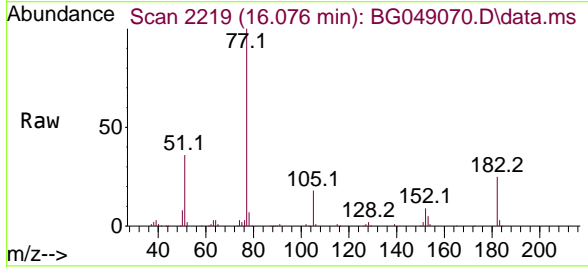
Ion	Ratio	Lower	Upper
138	100		
92	65.0	32.3	72.3
108	127.1	132.4	172.4#

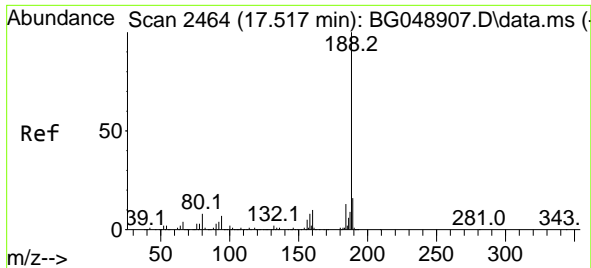


#63  
 Azobenzene  
 Concen: 15.89 ng  
 RT: 16.076 min Scan# 2219  
 Delta R.T. -0.010 min  
 Lab File: BG049070.D  
 Acq: 23 Jun 2021 20:54

Tgt Ion: 77 Resp: 144747

Ion	Ratio	Lower	Upper
77	100		
182	24.6	7.9	47.9
105	18.3	0.0	37.9
51	35.6	27.3	67.3

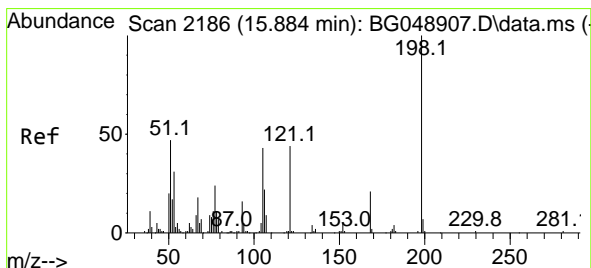
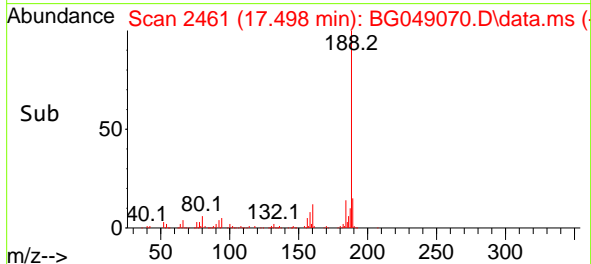
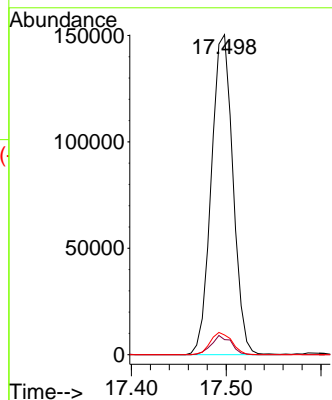
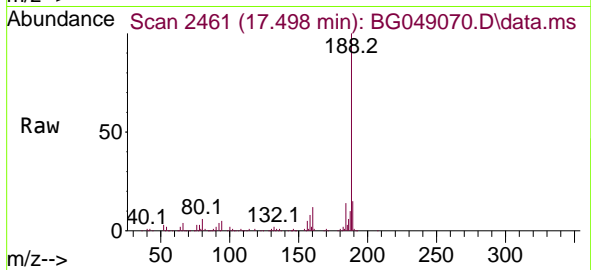




#64  
 Phenanthrene-d10  
 Concen: 20.00 ng  
 RT: 17.498 min Scan# 2461  
 Delta R.T. -0.010 min  
 Lab File: BG049070.D  
 Acq: 23 Jun 2021 20:54

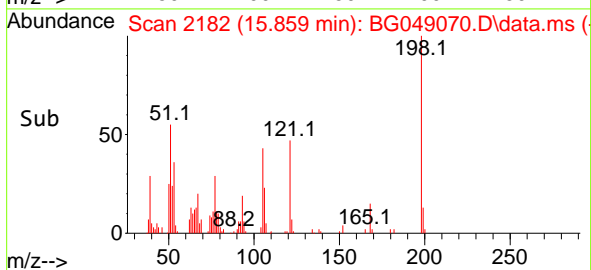
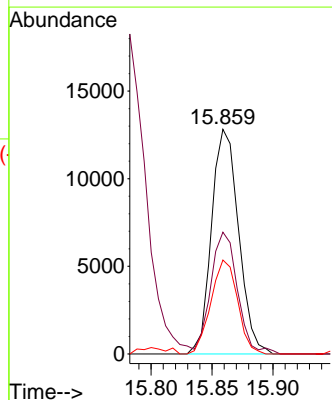
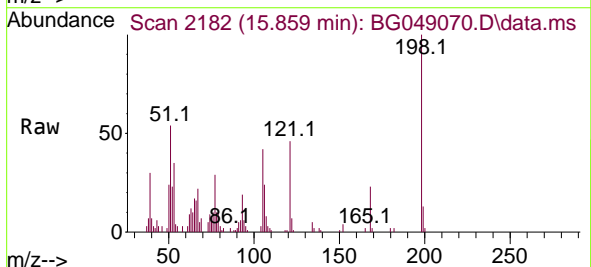
Instrument :  
 BNA\_G  
 ClientSampled :  
 B4-0-2MS

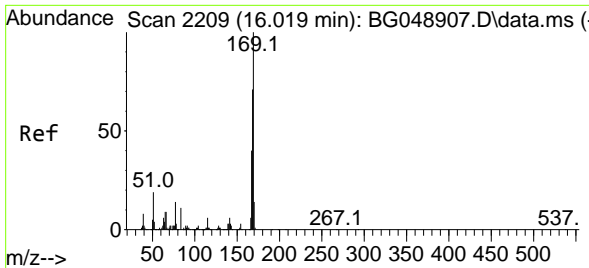
Tgt Ion:188 Resp: 238382  
 Ion Ratio Lower Upper  
 188 100  
 94 4.7 5.4 8.0#  
 80 6.2 3.7 5.5#



#65  
 4,6-Dinitro-2-methylphenol  
 Concen: 17.51 ng  
 RT: 15.859 min Scan# 2182  
 Delta R.T. -0.016 min  
 Lab File: BG049070.D  
 Acq: 23 Jun 2021 20:54

Tgt Ion:198 Resp: 19797  
 Ion Ratio Lower Upper  
 198 100  
 51 54.2 29.4 69.4  
 105 41.8 15.1 55.1

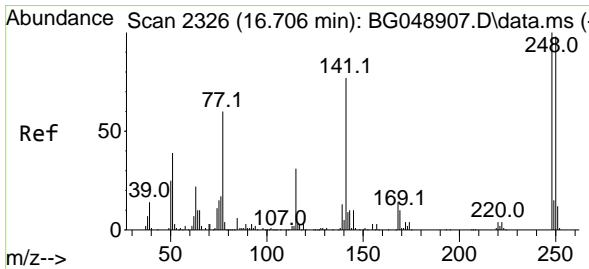
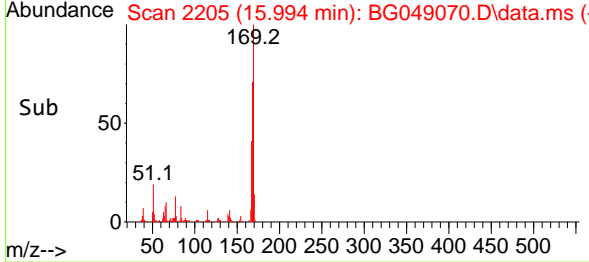
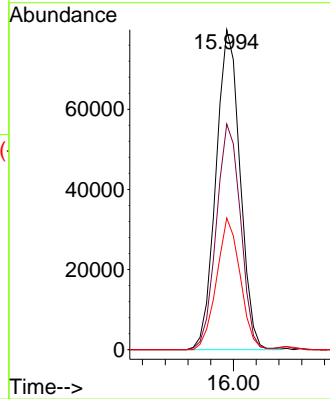
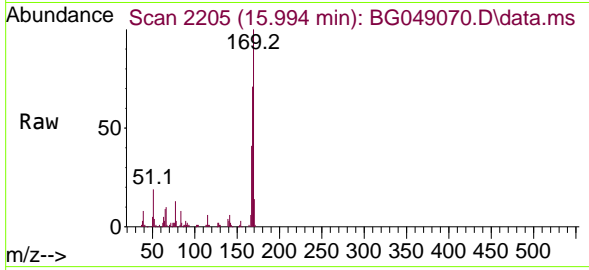




#66  
 n-Nitrosodiphenylamine  
 Concen: 15.81 ng  
 RT: 15.994 min Scan# 2205  
 Delta R.T. -0.016 min  
 Lab File: BG049070.D  
 Acq: 23 Jun 2021 20:54

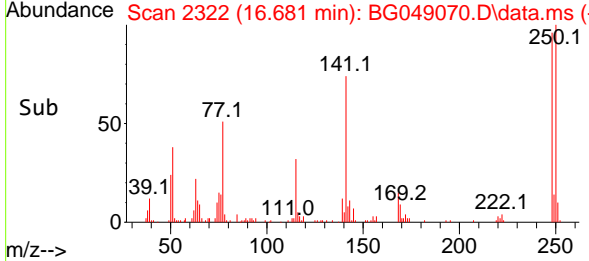
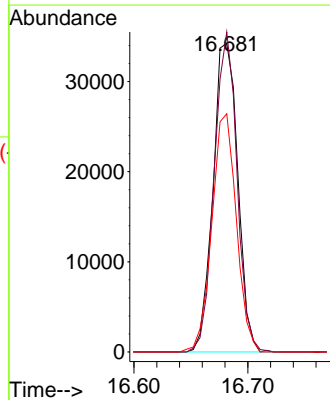
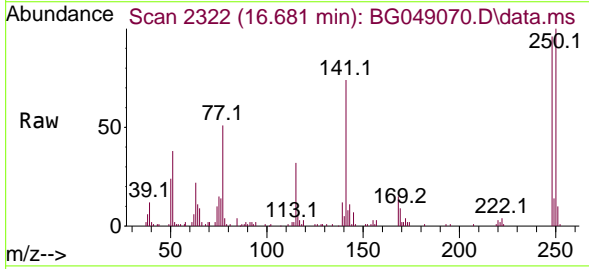
Instrument :  
 BNA\_G  
 ClientSampled :  
 B4-0-2MS

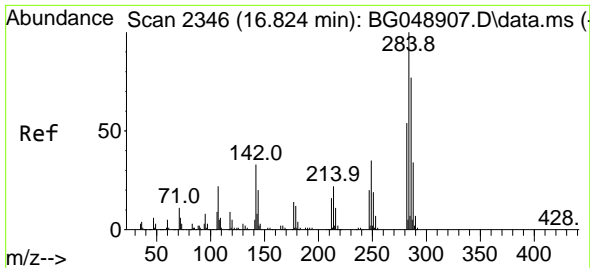
Tgt Ion	Resp	Lower	Upper
169	117426		
168	70.5	56.3	84.5
167	41.2	28.4	42.6



#67  
 4-Bromophenyl-phenylether  
 Concen: 17.39 ng  
 RT: 16.681 min Scan# 2322  
 Delta R.T. -0.010 min  
 Lab File: BG049070.D  
 Acq: 23 Jun 2021 20:54

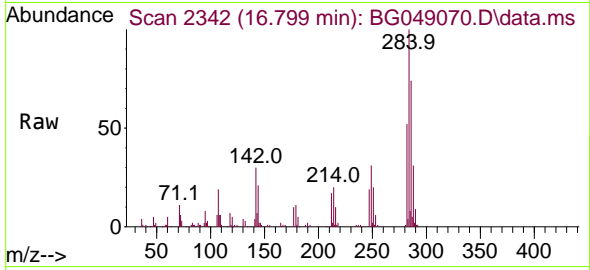
Tgt Ion	Resp	Lower	Upper
248	51753		
250	103.7	76.1	114.1
141	77.2	65.4	98.2



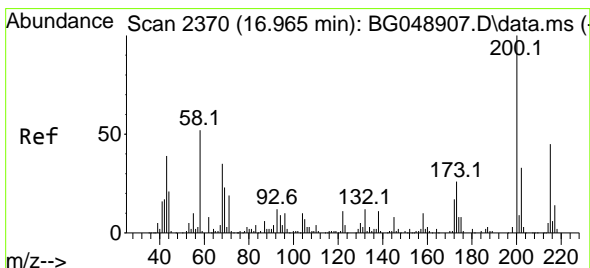
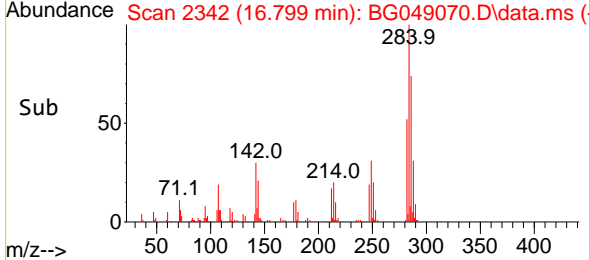
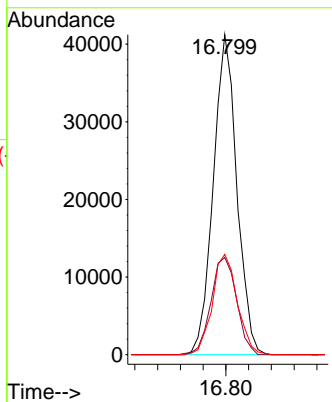


#68  
 Hexachlorobenzene  
 Concen: 18.39 ng  
 RT: 16.799 min Scan# 2342  
 Delta R.T. -0.010 min  
 Lab File: BG049070.D  
 Acq: 23 Jun 2021 20:54

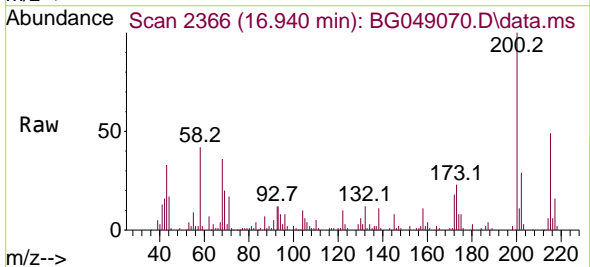
**Instrument :**  
 BNA\_G  
**ClientSampled :**  
 B4-0-2MS



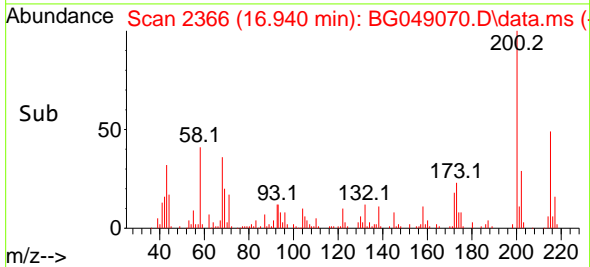
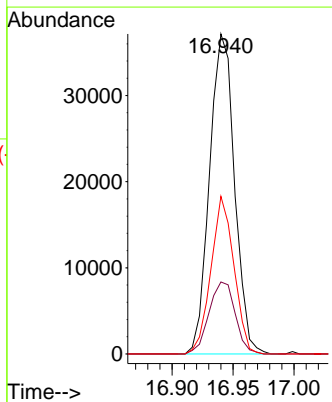
Tgt Ion:284 Resp: 59317  
 Ion Ratio Lower Upper  
 284 100  
 142 30.4 27.0 40.6  
 249 31.3 28.2 42.2

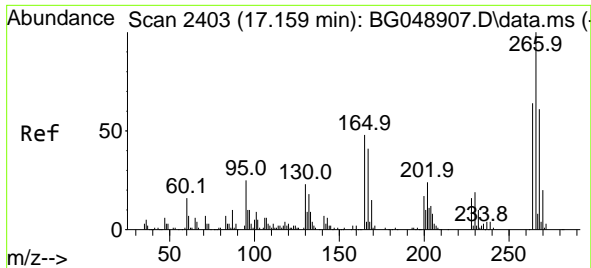


#69  
 Atrazine  
 Concen: 22.21 ng  
 RT: 16.940 min Scan# 2366  
 Delta R.T. -0.016 min  
 Lab File: BG049070.D  
 Acq: 23 Jun 2021 20:54



Tgt Ion:200 Resp: 52969  
 Ion Ratio Lower Upper  
 200 100  
 173 22.5 3.7 43.7  
 215 49.2 26.9 66.9

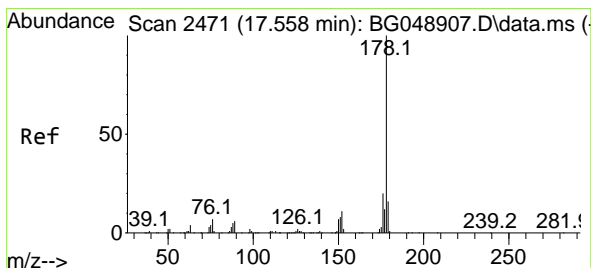
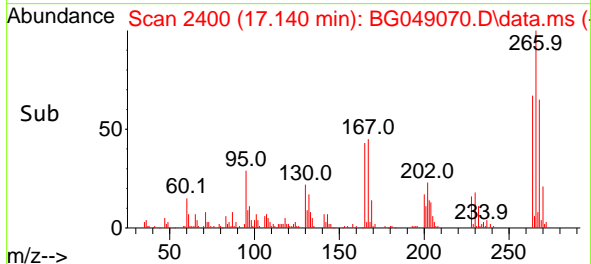
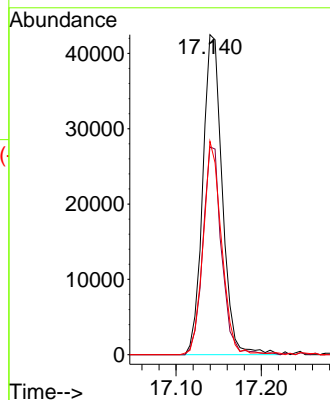
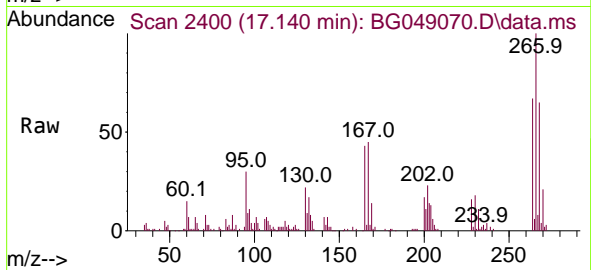




#70  
 Pentachlorophenol  
 Concen: 34.78 ng  
 RT: 17.140 min Scan# 2400  
 Delta R.T. -0.010 min  
 Lab File: BG049070.D  
 Acq: 23 Jun 2021 20:54

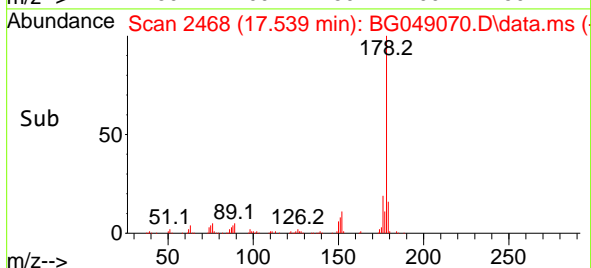
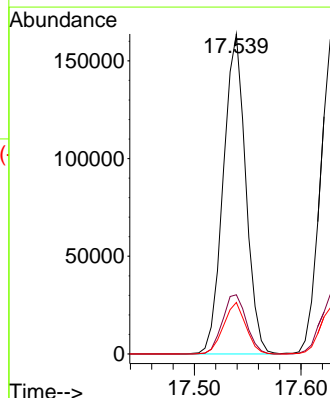
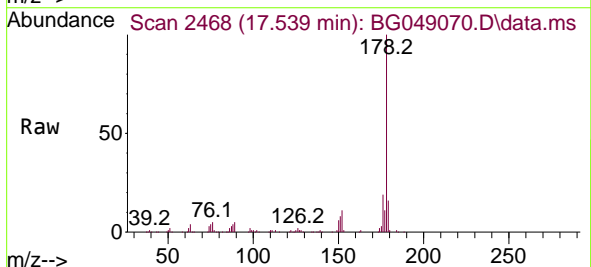
Instrument :  
 BNA\_G  
 ClientSampled :  
 B4-0-2MS

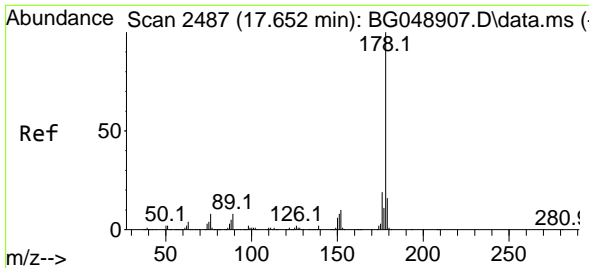
Tgt Ion	Resp	Lower	Upper
266	67436		
268	65.0	49.0	73.4
264	66.6	49.0	73.6



#71  
 Phenanthrene  
 Concen: 17.80 ng  
 RT: 17.539 min Scan# 2468  
 Delta R.T. -0.010 min  
 Lab File: BG049070.D  
 Acq: 23 Jun 2021 20:54

Tgt Ion	Resp	Lower	Upper
178	238790		
176	18.5	16.0	24.0
179	16.1	14.2	21.4



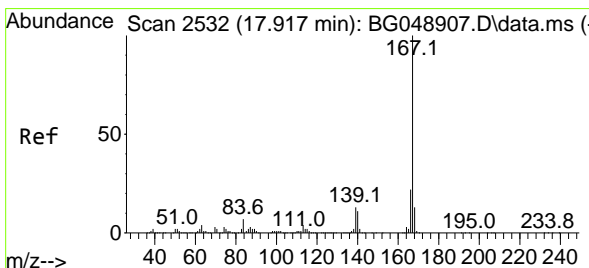
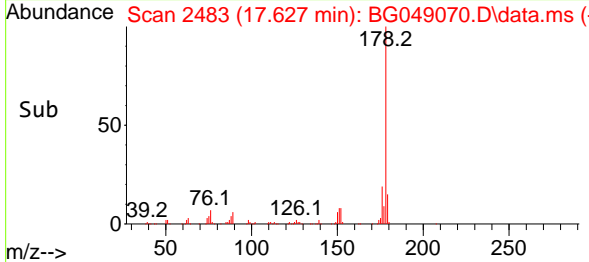
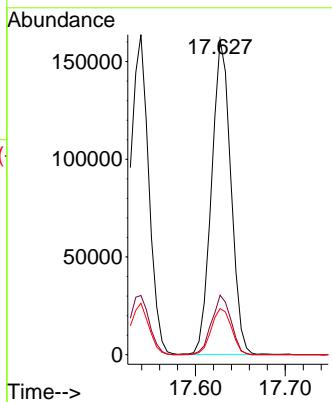
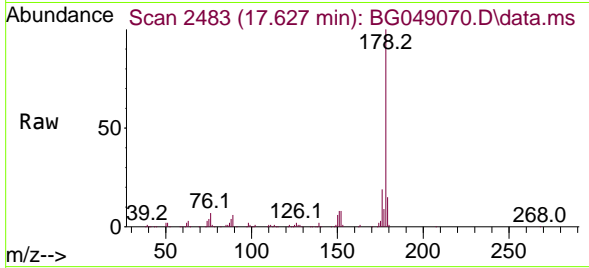


#72  
 Anthracene  
 Concen: 17.81 ng  
 RT: 17.627 min Scan# 2483  
 Delta R.T. -0.016 min  
 Lab File: BG049070.D  
 Acq: 23 Jun 2021 20:54

**Instrument :**  
 BNA\_G  
**ClientSampled :**  
 B4-0-2MS

Tgt Ion:178 Resp: 240043

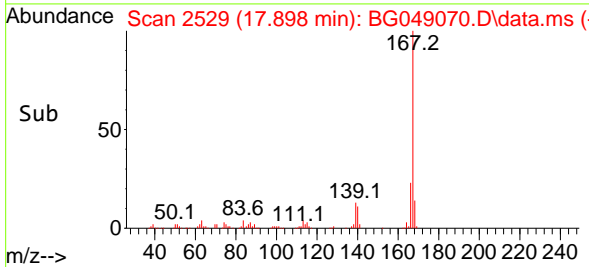
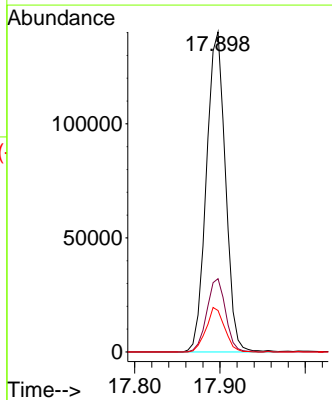
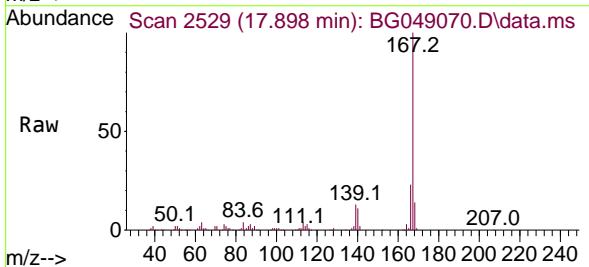
Ion	Ratio	Lower	Upper
178	100		
176	18.9	14.6	21.8
179	14.6	13.4	20.0

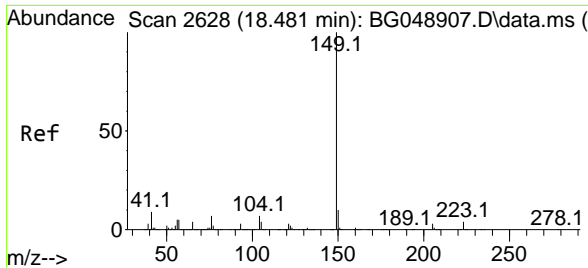


#73  
 Carbazole  
 Concen: 16.84 ng  
 RT: 17.898 min Scan# 2529  
 Delta R.T. -0.010 min  
 Lab File: BG049070.D  
 Acq: 23 Jun 2021 20:54

Tgt Ion:167 Resp: 217551

Ion	Ratio	Lower	Upper
167	100		
166	22.9	17.4	26.2
139	13.0	10.7	16.1

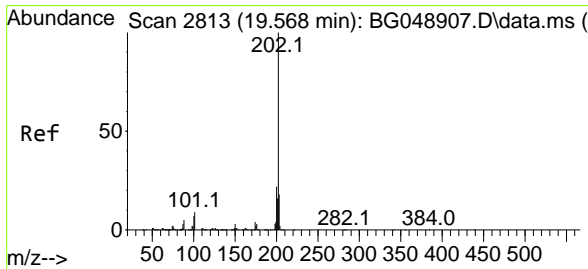
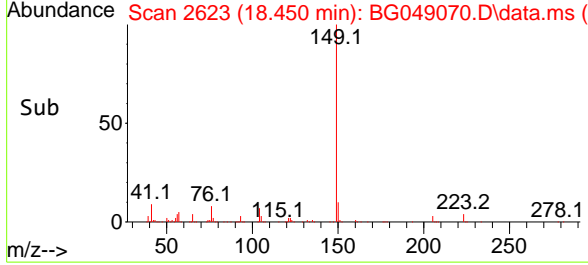
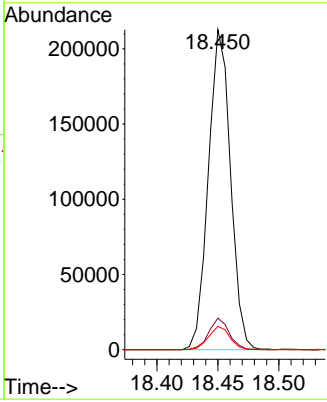
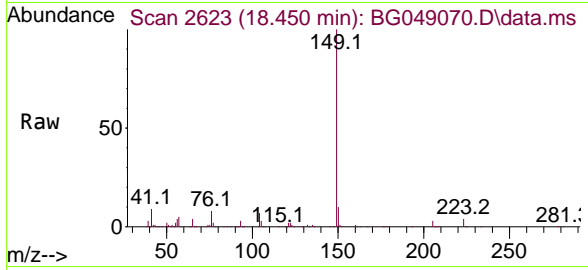




#74  
 Di-n-butylphthalate  
 Concen: 18.52 ng  
 RT: 18.450 min Scan# 2623  
 Delta R.T. -0.016 min  
 Lab File: BG049070.D  
 Acq: 23 Jun 2021 20:54

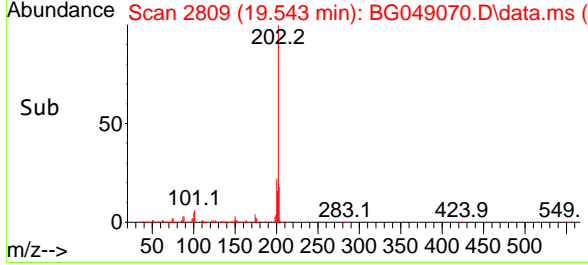
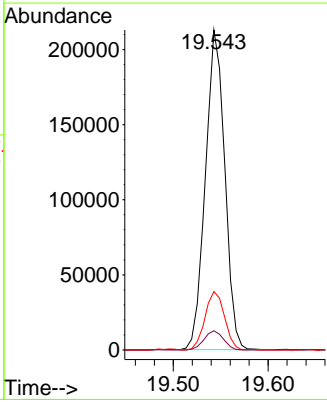
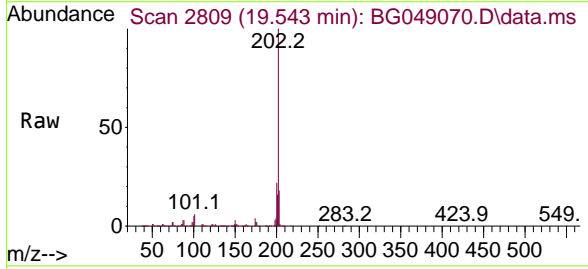
**Instrument :**  
 BNA\_G  
**ClientSampled :**  
 B4-0-2MS

Tgt Ion	Resp	Lower	Upper
149	268331		
100	100		
150	9.9	7.5	11.3
104	7.3	6.6	10.0

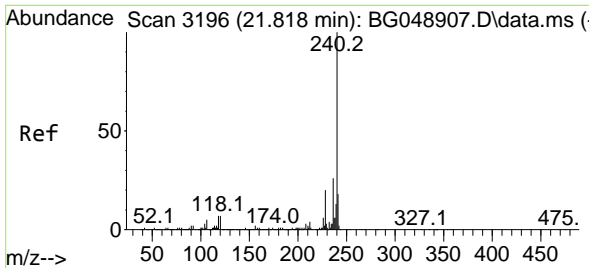


#75  
 Fluoranthene  
 Concen: 18.66 ng  
 RT: 19.543 min Scan# 2809  
 Delta R.T. -0.010 min  
 Lab File: BG049070.D  
 Acq: 23 Jun 2021 20:54

Tgt Ion	Resp	Lower	Upper
202	301824		
100	100		
101	6.0	0.0	24.7
203	18.3	0.0	38.5



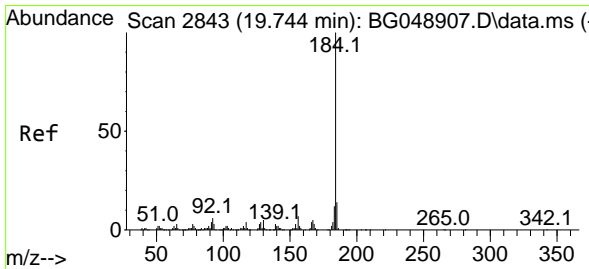
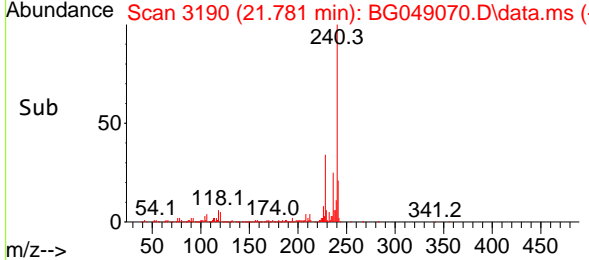
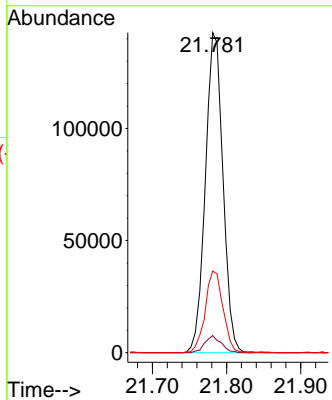
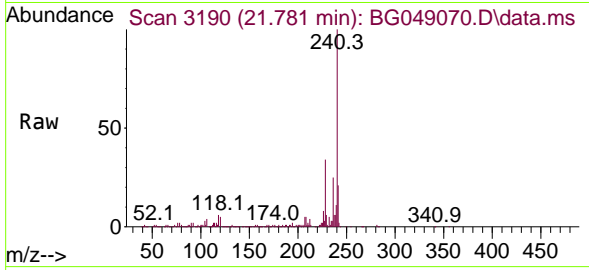




#76  
 Chrysene-d12  
 Concen: 20.00 ng  
 RT: 21.781 min Scan# 3190  
 Delta R.T. -0.016 min  
 Lab File: BG049070.D  
 Acq: 23 Jun 2021 20:54

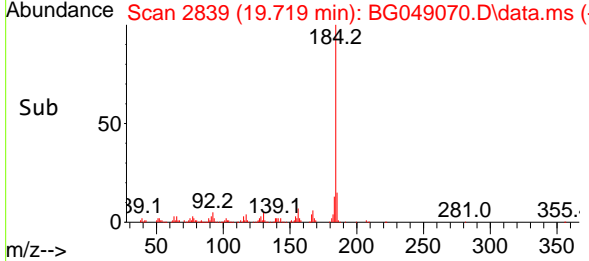
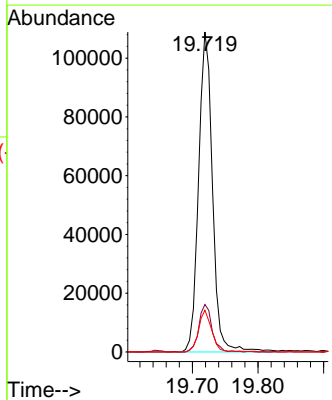
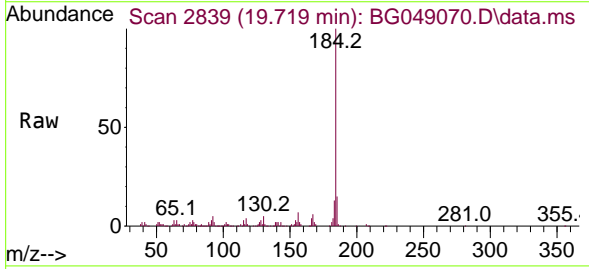
**Instrument :**  
 BNA\_G  
**ClientSampleId :**  
 B4-0-2MS

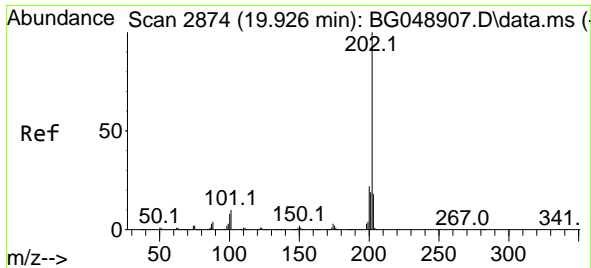
Tgt Ion	Resp	Lower	Upper
240	100		
120	5.3	4.2	6.2
236	25.5	21.8	32.6



#77  
 Benzidine  
 Concen: 33.99 ng  
 RT: 19.719 min Scan# 2839  
 Delta R.T. -0.010 min  
 Lab File: BG049070.D  
 Acq: 23 Jun 2021 20:54

Tgt Ion	Resp	Lower	Upper
184	100		
185	14.9	10.7	16.1
183	13.1	9.4	14.0

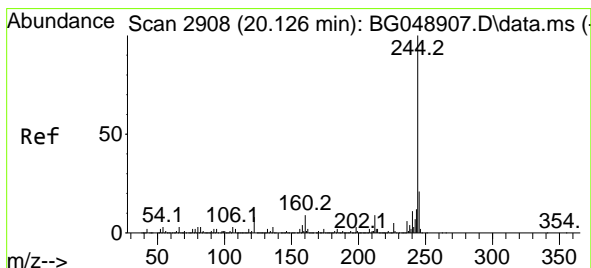
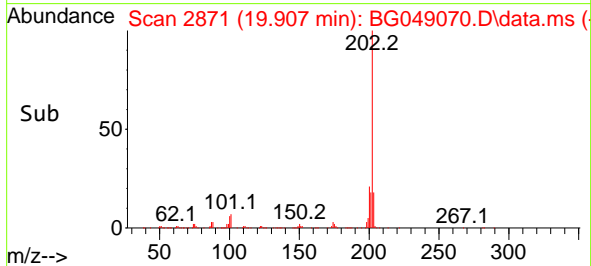
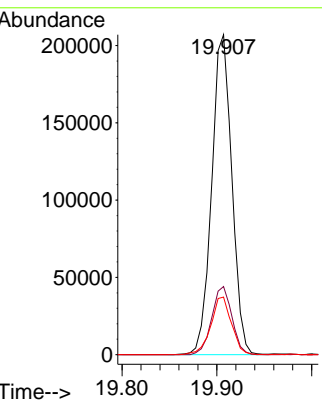
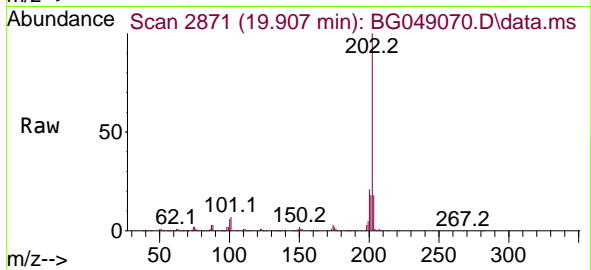




#78  
 Pyrene  
 Concen: 17.94 ng  
 RT: 19.907 min Scan# 2871  
 Delta R.T. -0.010 min  
 Lab File: BG049070.D  
 Acq: 23 Jun 2021 20:54

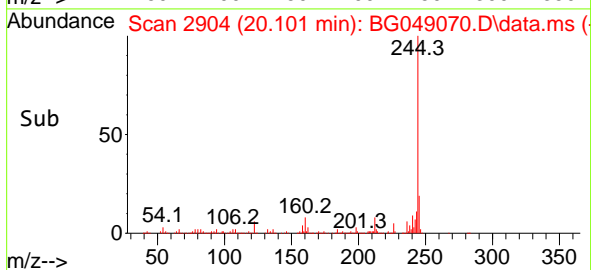
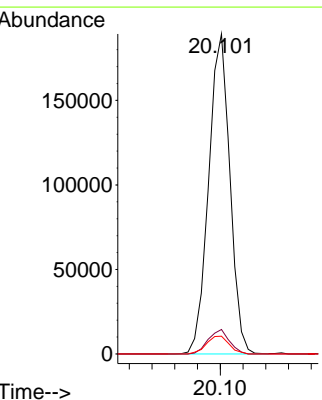
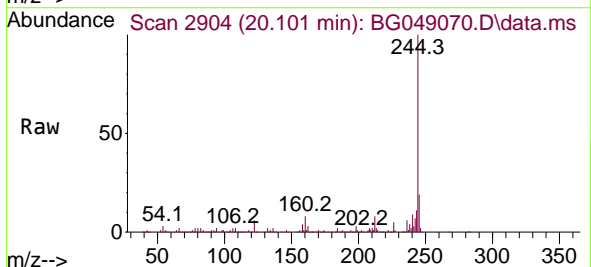
**Instrument :**  
 BNA\_G  
**ClientSampled :**  
 B4-0-2MS

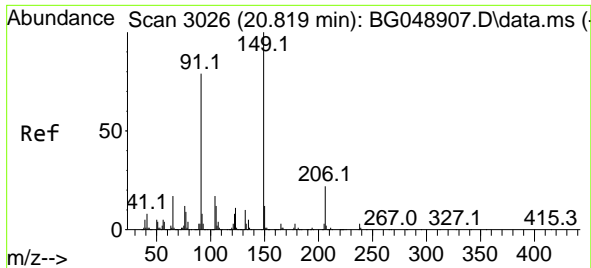
Tgt Ion	Resp	Lower	Upper
202	306080		
200	21.3	15.8	23.8
203	18.0	14.6	21.8



#79  
 Terphenyl-d14  
 Concen: 19.13 ng  
 RT: 20.101 min Scan# 2904  
 Delta R.T. -0.010 min  
 Lab File: BG049070.D  
 Acq: 23 Jun 2021 20:54

Tgt Ion	Resp	Lower	Upper
244	245526		
212	7.6	6.9	10.3
122	5.6	5.0	7.6

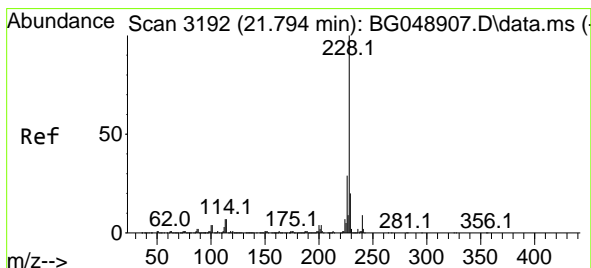
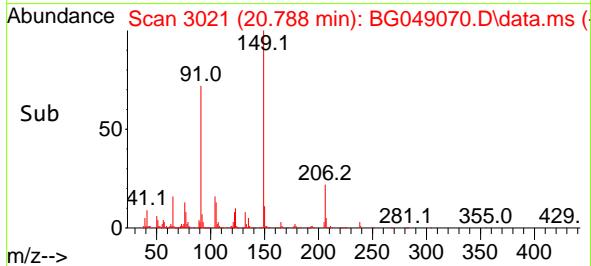
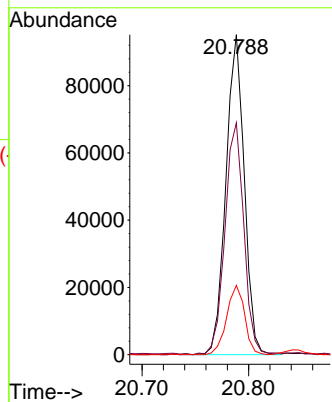
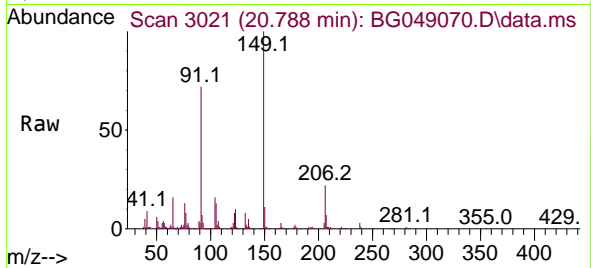




#80  
 Butylbenzylphthalate  
 Concen: 17.66 ng  
 RT: 20.788 min Scan# 3021  
 Delta R.T. -0.010 min  
 Lab File: BG049070.D  
 Acq: 23 Jun 2021 20:54

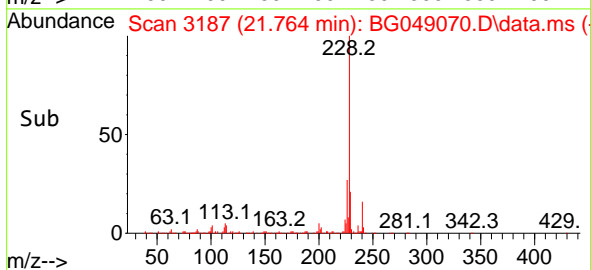
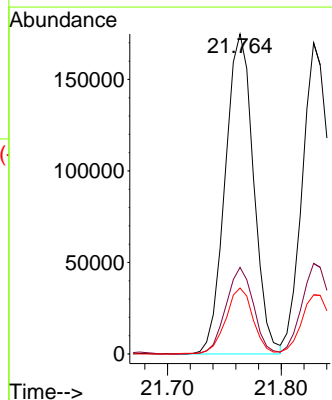
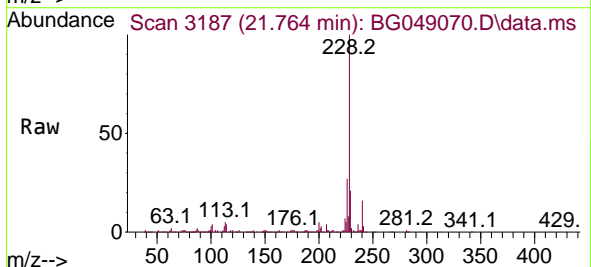
Instrument :  
 BNA\_G  
 ClientSampled :  
 B4-0-2MS

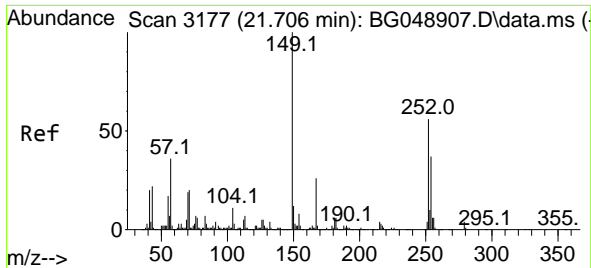
Tgt Ion:149 Resp: 113696  
 Ion Ratio Lower Upper  
 149 100  
 91 72.4 63.4 95.2  
 206 21.6 18.4 27.6



#81  
 Benzo(a)anthracene  
 Concen: 17.95 ng  
 RT: 21.764 min Scan# 3187  
 Delta R.T. -0.016 min  
 Lab File: BG049070.D  
 Acq: 23 Jun 2021 20:54

Tgt Ion:228 Resp: 303033  
 Ion Ratio Lower Upper  
 228 100  
 226 27.1 22.7 34.1  
 229 20.6 16.0 24.0

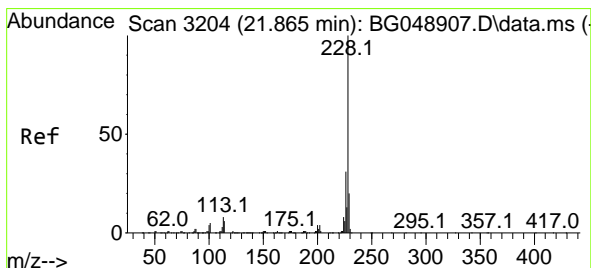
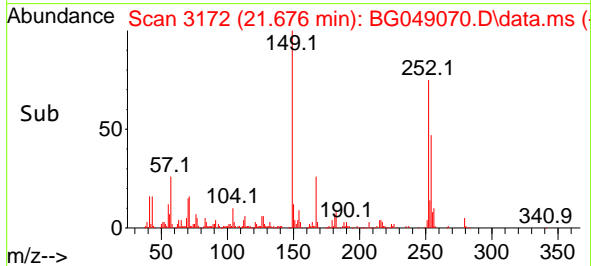
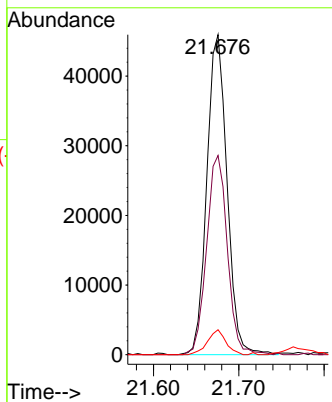
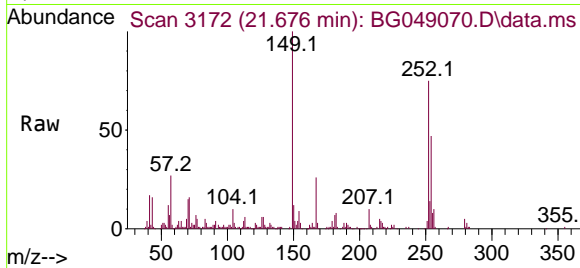




#82  
 3,3'-Dichlorobenzidine  
 Concen: 14.00 ng  
 RT: 21.676 min Scan# 3172  
 Delta R.T. -0.016 min  
 Lab File: BG049070.D  
 Acq: 23 Jun 2021 20:54

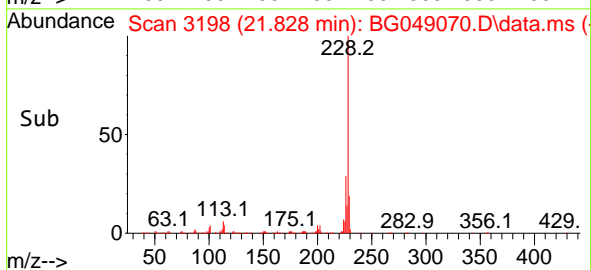
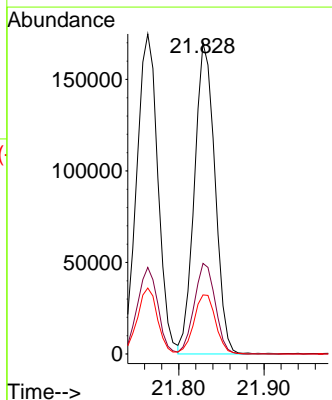
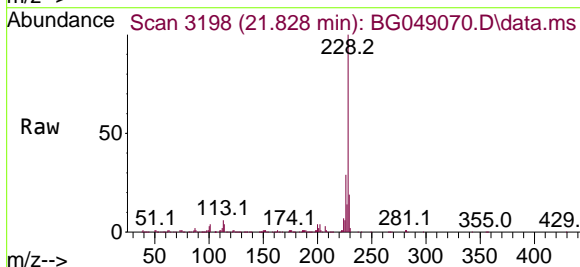
Instrument :  
 BNA\_G  
 ClientSampled :  
 B4-0-2MS

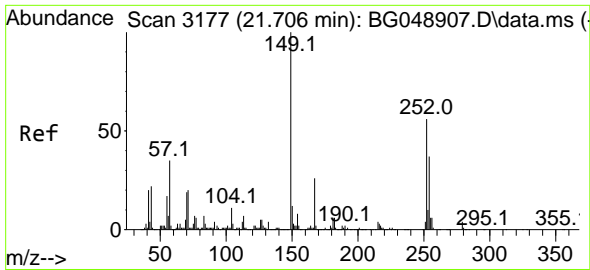
Tgt Ion	Resp	Lower	Upper
252	100		
254	62.2	52.4	78.6
126	7.8	5.9	8.9



#83  
 Chrysene  
 Concen: 17.56 ng  
 RT: 21.828 min Scan# 3198  
 Delta R.T. -0.022 min  
 Lab File: BG049070.D  
 Acq: 23 Jun 2021 20:54

Tgt Ion	Resp	Lower	Upper
228	100		
226	29.1	23.1	34.7
229	19.0	15.3	22.9

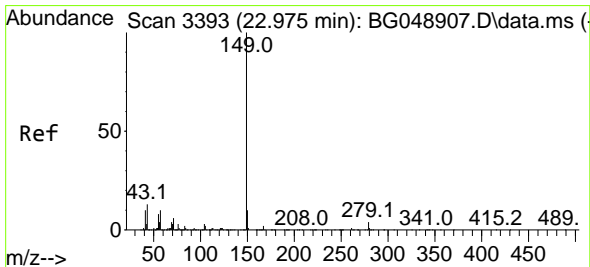
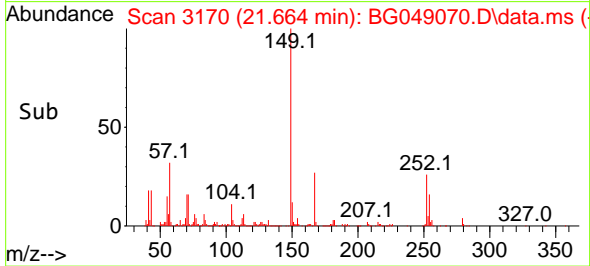
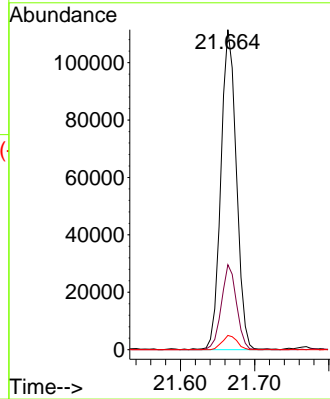
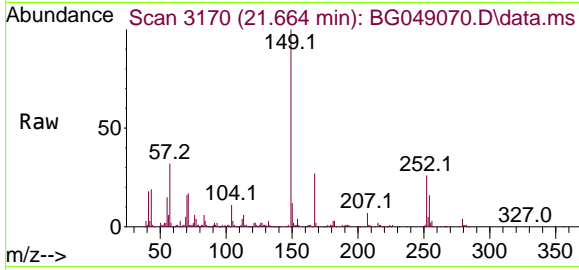




#84  
 Bis(2-ethylhexyl)phthalate  
 Concen: 17.63 ng  
 RT: 21.664 min Scan# 3170  
 Delta R.T. -0.022 min  
 Lab File: BG049070.D  
 Acq: 23 Jun 2021 20:54

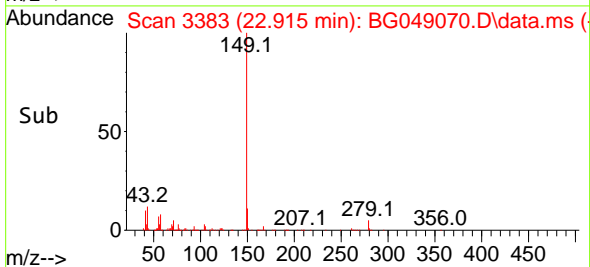
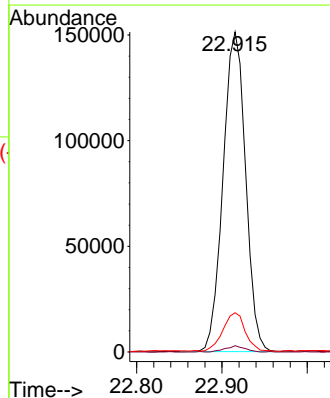
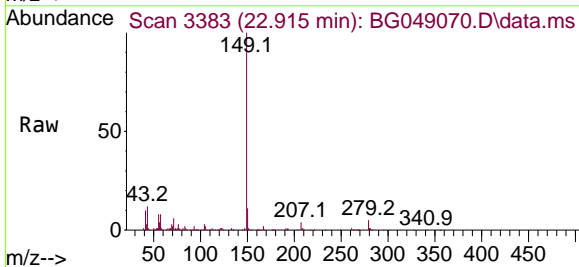
Instrument :  
 BNA\_G  
 ClientSampled :  
 B4-0-2MS

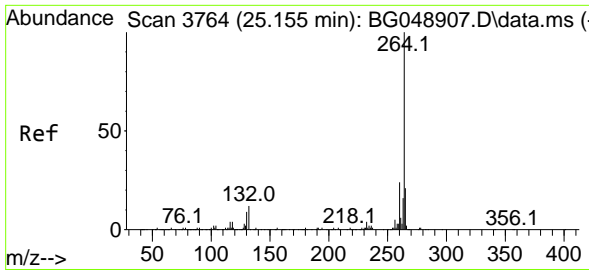
Tgt Ion	Resp	Lower	Upper
149	161760		
167	26.6	22.3	33.5
279	4.4	3.8	5.8



#85  
 Di-n-octyl phthalate  
 Concen: 17.82 ng  
 RT: 22.915 min Scan# 3383  
 Delta R.T. -0.022 min  
 Lab File: BG049070.D  
 Acq: 23 Jun 2021 20:54

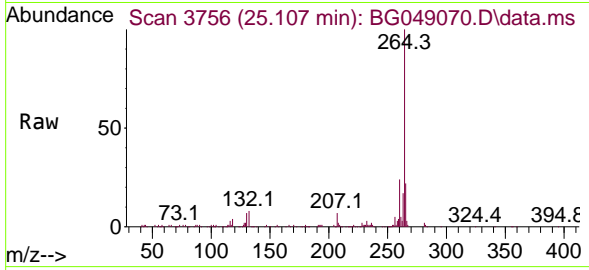
Tgt Ion	Resp	Lower	Upper
149	277390		
167	1.7	1.4	2.2
43	12.1	8.6	12.8



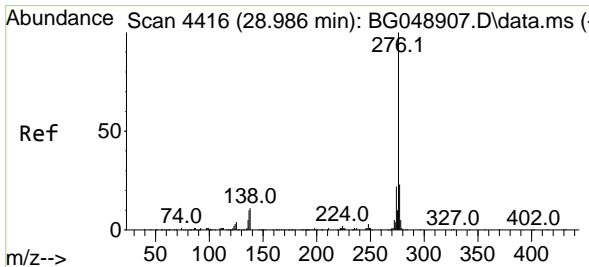
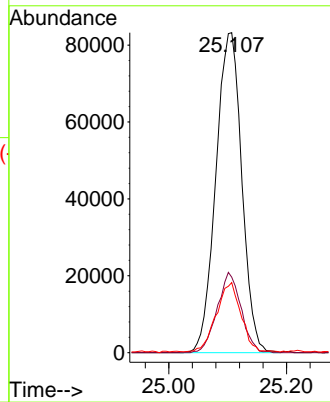
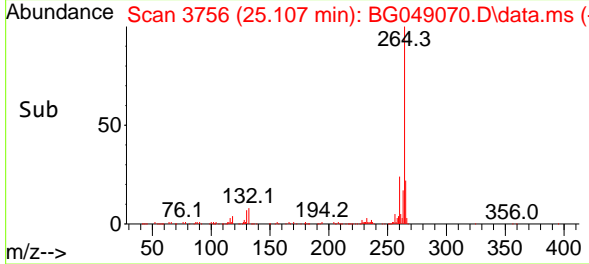


#86  
 Perylene-d12  
 Concen: 20.00 ng  
 RT: 25.107 min Scan# 3756  
 Delta R.T. -0.022 min  
 Lab File: BG049070.D  
 Acq: 23 Jun 2021 20:54

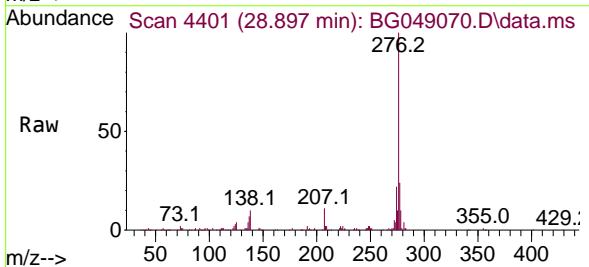
Instrument :  
 BNA\_G  
 ClientSampled :  
 B4-0-2MS



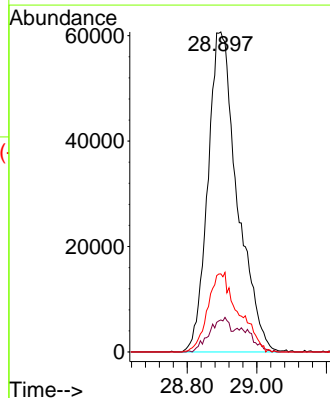
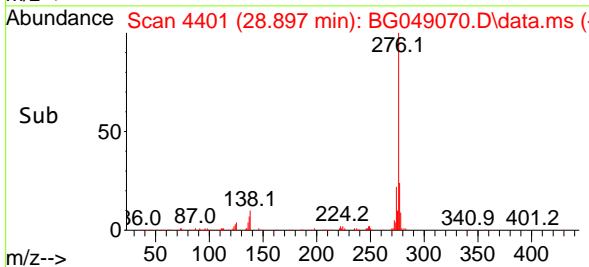
Tgt Ion:264 Resp: 254035  
 Ion Ratio Lower Upper  
 264 100  
 260 23.6 19.4 29.2  
 265 21.9 16.9 25.3

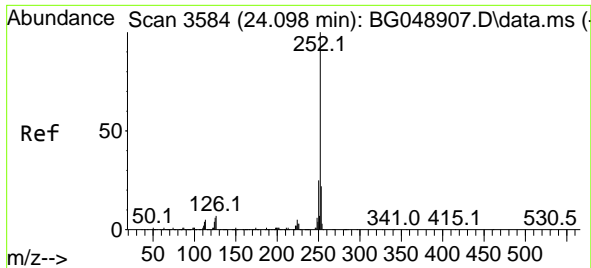


#87  
 Indeno(1,2,3-cd)pyrene  
 Concen: 18.68 ng  
 RT: 28.897 min Scan# 4401  
 Delta R.T. -0.057 min  
 Lab File: BG049070.D  
 Acq: 23 Jun 2021 20:54



Tgt Ion:276 Resp: 357131  
 Ion Ratio Lower Upper  
 276 100  
 138 7.7 5.1 7.7  
 277 25.8 19.8 29.6

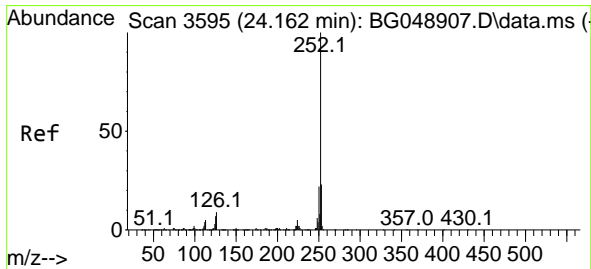
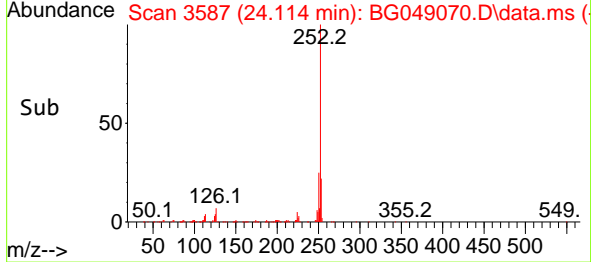
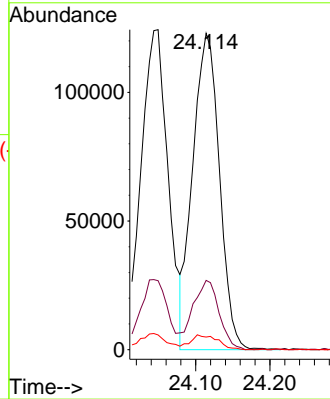
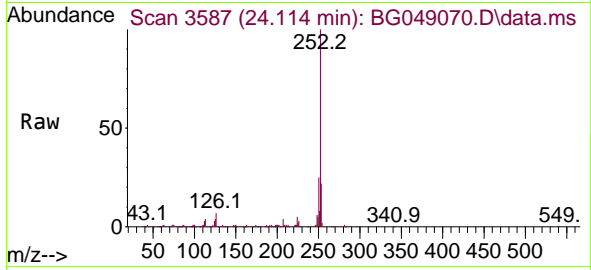




#88  
 Benzo(b)fluoranthene  
 Concen: 16.97 ng  
 RT: 24.114 min Scan# 3587  
 Delta R.T. 0.043 min  
 Lab File: BG049070.D  
 Acq: 23 Jun 2021 20:54

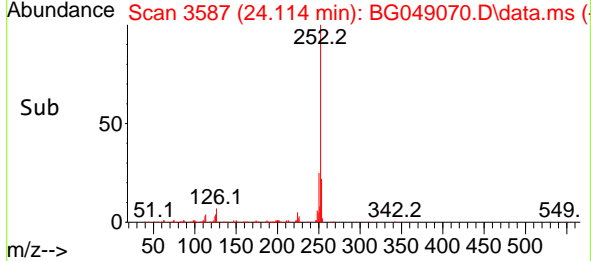
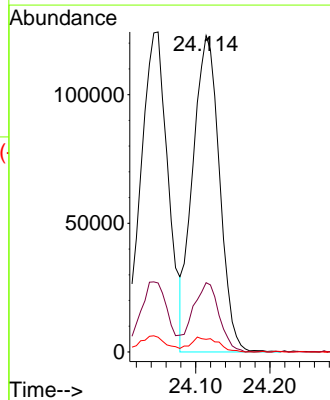
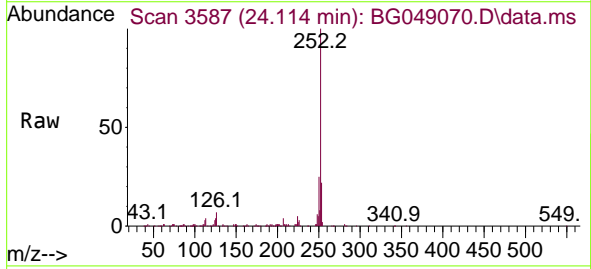
Instrument :  
 BNA\_G  
 ClientSampled :  
 B4-0-2MS

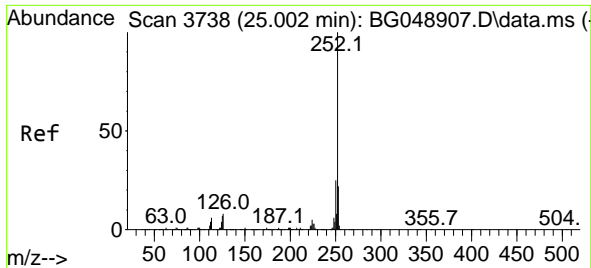
Tgt Ion	Resp	Lower	Upper
252	100		
253	21.9	16.2	24.4
125	4.0	3.0	4.4



#89  
 Benzo(k)fluoranthene  
 Concen: 17.89 ng  
 RT: 24.114 min Scan# 3587  
 Delta R.T. -0.028 min  
 Lab File: BG049070.D  
 Acq: 23 Jun 2021 20:54

Tgt Ion	Resp	Lower	Upper
252	100		
253	21.9	18.0	27.0
125	4.0	3.1	4.7

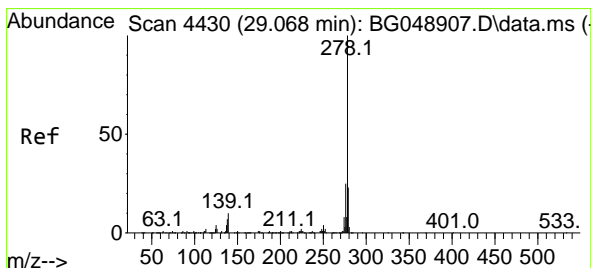
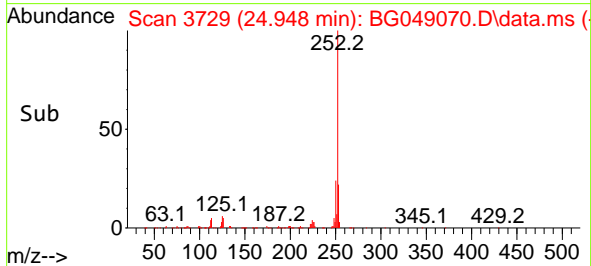
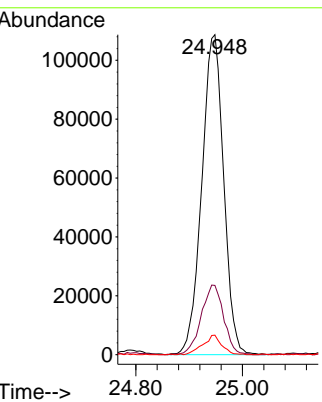
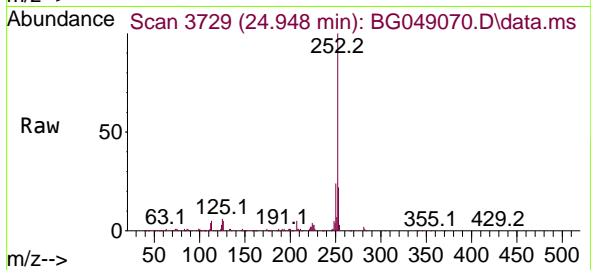




#90  
 Benzo(a)pyrene  
 Concen: 18.76 ng  
 RT: 24.948 min Scan# 3729  
 Delta R.T. -0.028 min  
 Lab File: BG049070.D  
 Acq: 23 Jun 2021 20:54

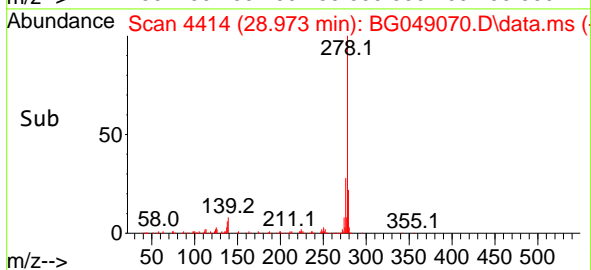
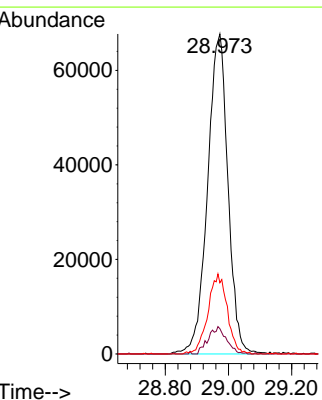
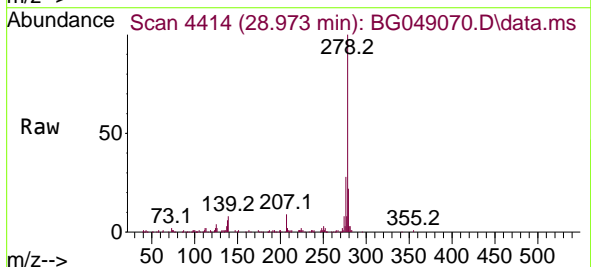
**Instrument :**  
 BNA\_G  
**ClientSampled :**  
 B4-0-2MS

Tgt Ion	Resp	Lower	Upper
252	100		
253	21.6	16.6	25.0
125	6.1	3.5	5.3#

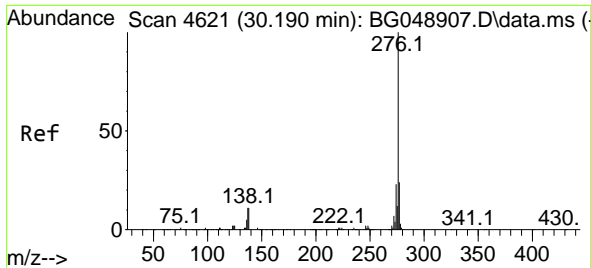


#91  
 Dibenzo(a,h)anthracene  
 Concen: 18.99 ng  
 RT: 28.973 min Scan# 4414  
 Delta R.T. -0.046 min  
 Lab File: BG049070.D  
 Acq: 23 Jun 2021 20:54

Tgt Ion	Resp	Lower	Upper
278	100		
139	7.9	4.6	6.8#
279	22.2	17.9	26.9







#92  
 Benzo(g,h,i)perylene  
 Concen: 18.64 ng  
 RT: 30.078 min Scan# 4602  
 Delta R.T. -0.063 min  
 Lab File: BG049070.D  
 Acq: 23 Jun 2021 20:54

**Instrument :**  
 BNA\_G  
**ClientSampled :**  
 B4-0-2MS

Tgt Ion:276 Resp: 300370

Ion	Ratio	Lower	Upper
276	100		
277	24.6	18.4	27.6
138	9.1	7.0	10.6

