

Data Path : Z:\HPCHEM1\BNA_G\DATA\BG062716\
 Data File : BG022657.D
 Acq On : 28 Jun 2016 00:38
 Operator : UM/SJ
 Sample : H3606-03
 Misc : LOD-1PPM
 ALS Vial : 22 Sample Multiplier: 1

Instrument :
 BNA_G
 ClientSampleId :
 LOD-SOIL2016-01

Quant Time: Jun 28 01:45:31 2016
 Quant Method : Z:\HPCHEM1\BNA_G\METHODS\8270-BG062516.M
 Quant Title : ASP BNA STANDARDS FOR 5 POINT CALIBRATION
 QLast Update : Fri Jun 24 20:14:59 2016
 Response via : Initial Calibration

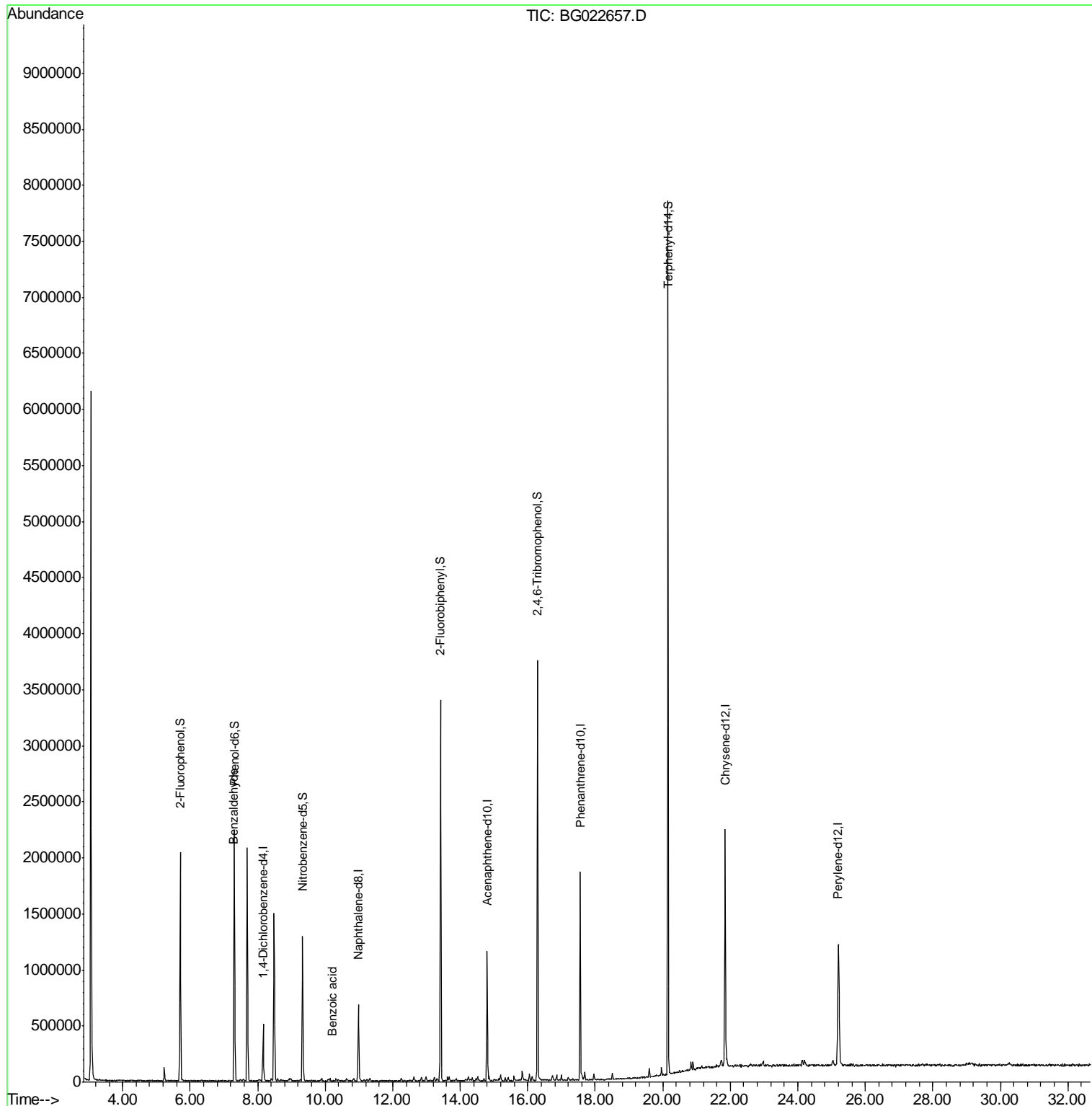
Internal Standards	R.T.	QIon	Response	Conc	Units	Dev(Min)
1) 1,4-Dichlorobenzene-d4	8.16	152	128955	20.00	ng	0.00
21) Naphthalene-d8	10.98	136	556452	20.00	ng	0.00
38) Acenaphthene-d10	14.80	164	405890	20.00	ng	0.00
63) Phenanthrene-d10	17.55	188	1116257	20.00	ng	0.00
75) Chrysene-d12	21.85	240	1294116	20.00	ng	0.00
86) Perylene-d12	25.21	264	1289031	20.00	ng	0.00
System Monitoring Compounds						
5) 2-Fluorophenol	5.71	112	824383	102.54	ng	0.00
7) Phenol-d6	7.31	99	1202353	106.10	ng	0.00
23) Nitrobenzene-d5	9.33	82	828000	62.98	ng	0.00
41) 2,4,6-Tribromophenol	16.29	330	698806	109.46	ng	0.00
44) 2-Fluorobiphenyl	13.42	172	1685702	65.86	ng	0.00
78) Terphenyl-d14	20.16	244	2800299	57.33	ng	0.00
Target Compounds						Qvalue
9) Benzaldehyde	7.29	77	9464	2.37	ng	# 69
32) Benzoic acid	10.21	122	495	5.18	ng	# 43

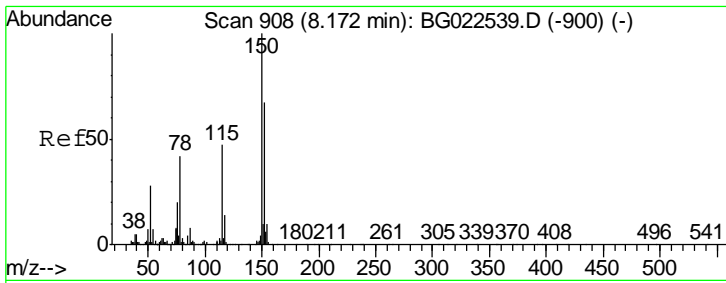
(#) = qualifier out of range (m) = manual integration (+) = signals summed

Data Path : Z:\HPCHEM1\BNA_G\DATA\BG062716\
 Data File : BG022657.D
 Acq On : 28 Jun 2016 00:38
 Operator : UM/SJ
 Sample : H3606-03
 Misc : LOD-1PPM
 ALS Vial : 22 Sample Multiplier: 1

Instrument :
 BNA_G
 ClientSampleId :
 LOD-SOIL2016-01

Quant Time: Jun 28 01:45:31 2016
 Quant Method : Z:\HPCHEM1\BNA_G\METHODS\8270-BG062516.M
 Quant Title : ASP BNA STANDARDS FOR 5 POINT CALIBRATION
 QLast Update : Fri Jun 24 20:14:59 2016
 Response via : Initial Calibration

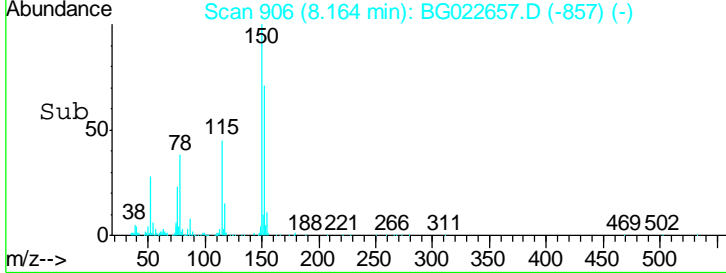
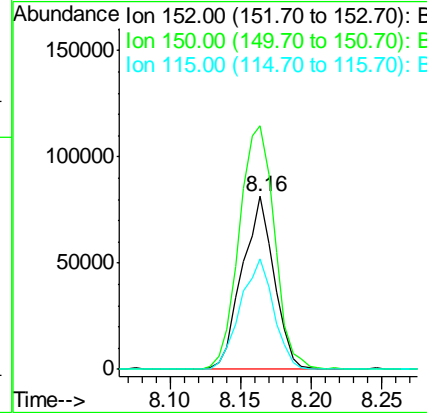
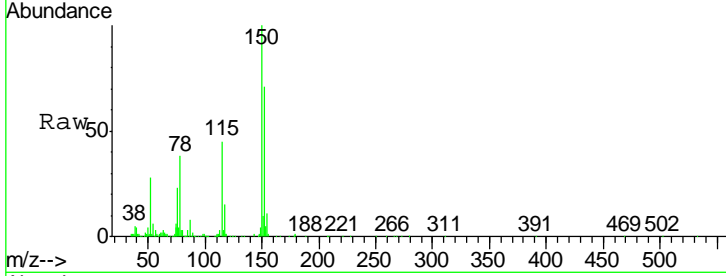




#1
 1,4-Dichlorobenzene-d4
 Concen: 20.00 ng
 RT: 8.16 min Scan# 906
 Delta R.T. -0.01 min
 Lab File: BG022657.D
 Acq: 28 Jun 2016 00:38

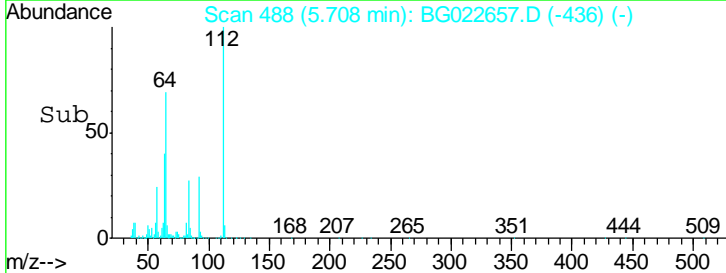
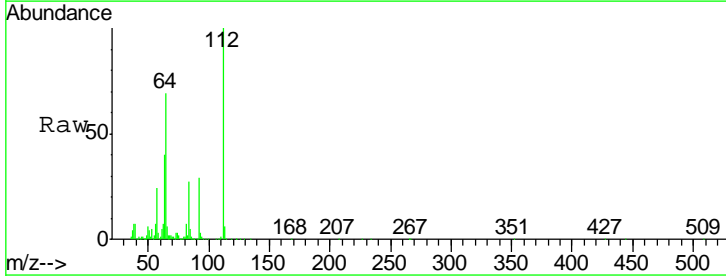
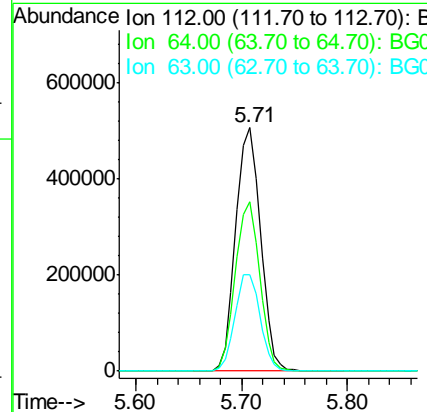
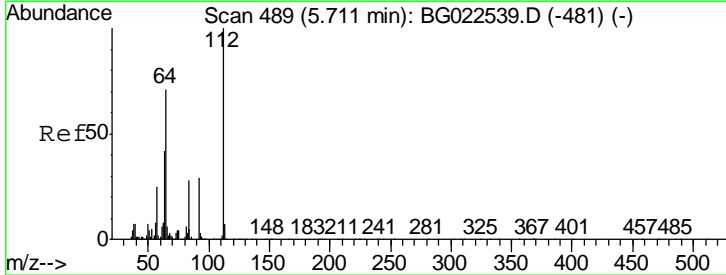
Instrument :
 BNA_G
ClientSampled :
 LOD-SOIL2016-01

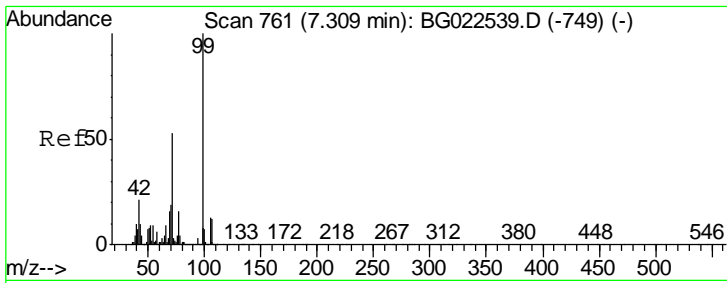
Tgt Ion	Resp	Lower	Upper
152	128955		
152	100		
150	140.6	144.7	217.1#
115	63.6	64.0	96.0#



#5
 2-Fluorophenol
 Concen: 102.54 ng
 RT: 5.71 min Scan# 488
 Delta R.T. 0.00 min
 Lab File: BG022657.D
 Acq: 28 Jun 2016 00:38

Tgt Ion	Resp	Lower	Upper
112	824383		
112	100		
64	69.5	59.0	88.4
63	39.8	37.8	56.8

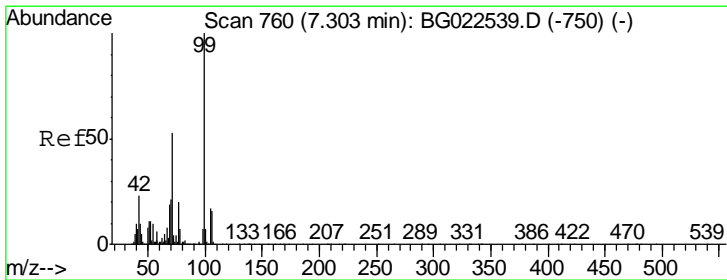
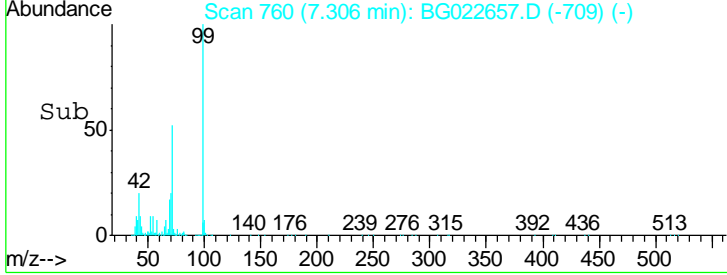
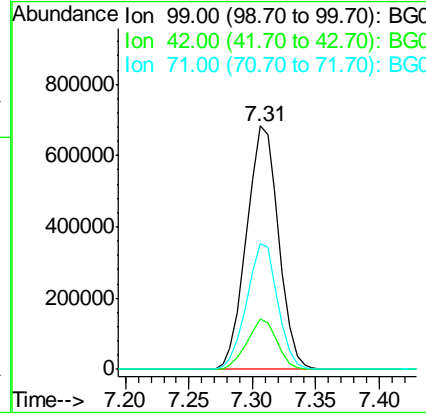
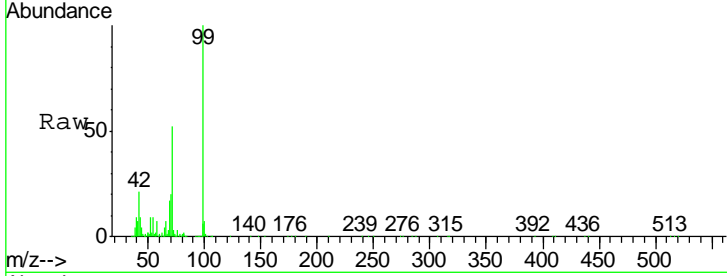




#7
 Phenol-d6
 Concen: 106.10 ng
 RT: 7.31 min Scan# 760
 Delta R.T. 0.00 min
 Lab File: BG022657.D
 Acq: 28 Jun 2016 00:38

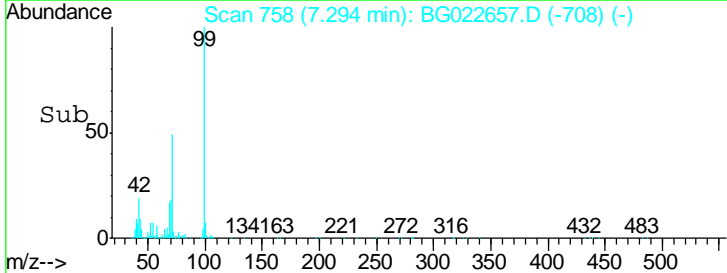
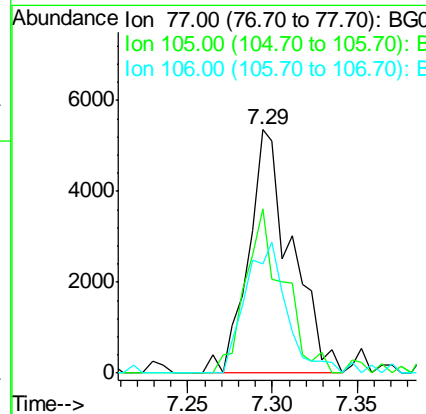
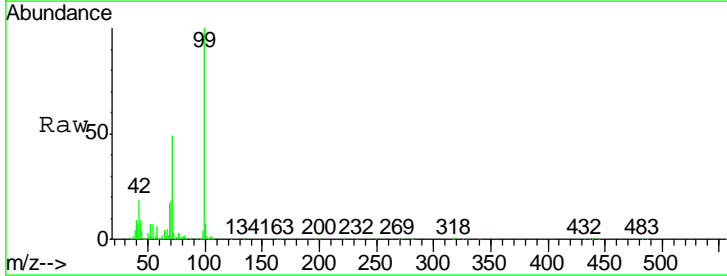
Instrument :
 BNA_G
 ClientSampleId :
 LOD-SOIL2016-01

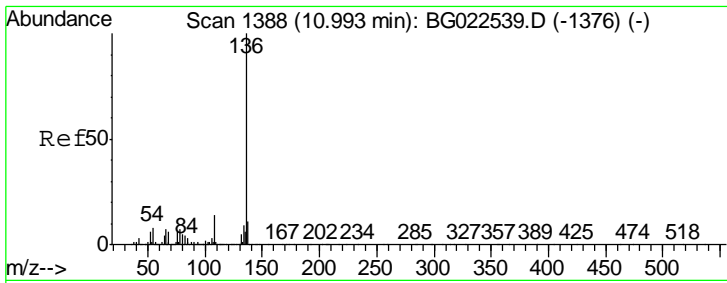
Tgt Ion	Resp	Lower	Upper
99	1202353		
42	20.5	17.8	26.6
71	51.9	41.5	62.3



#9
 Benzaldehyde
 Concen: 2.37 ng
 RT: 7.29 min Scan# 758
 Delta R.T. -0.00 min
 Lab File: BG022657.D
 Acq: 28 Jun 2016 00:38

Tgt Ion	Resp	Lower	Upper
77	9464		
105	67.2	58.7	98.7
106	44.7	67.5	107.5#

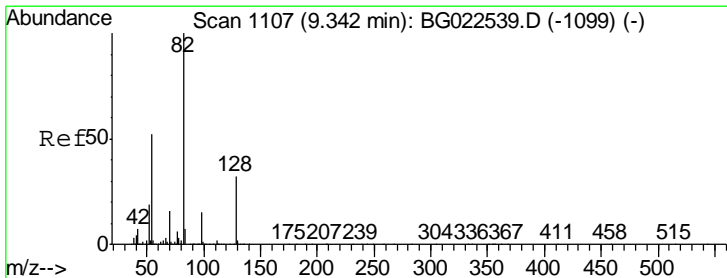
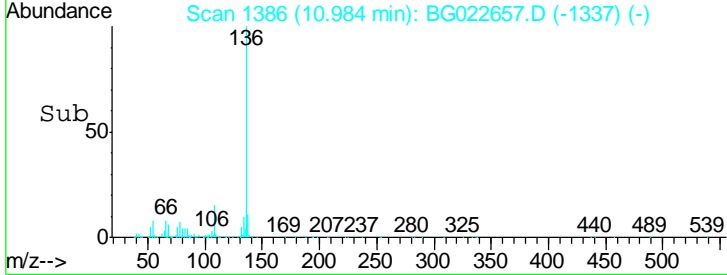
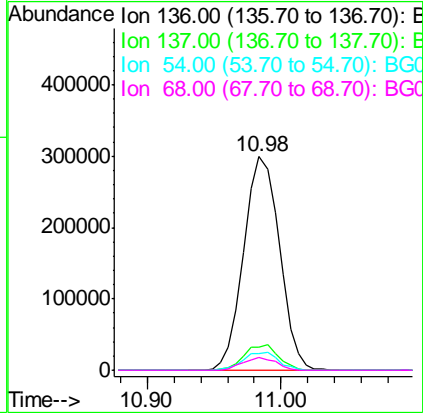
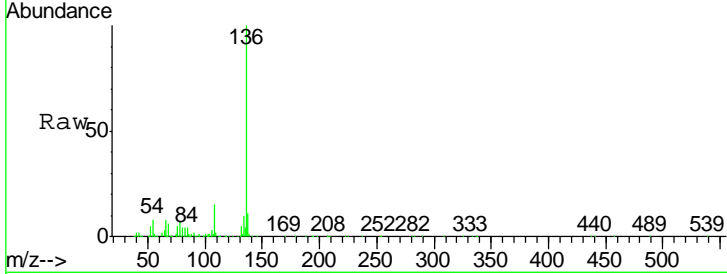




#21
 Naphthalene-d8
 Concen: 20.00 ng
 RT: 10.98 min Scan# 1386
 Delta R.T. -0.01 min
 Lab File: BG022657.D
 Acq: 28 Jun 2016 00:38

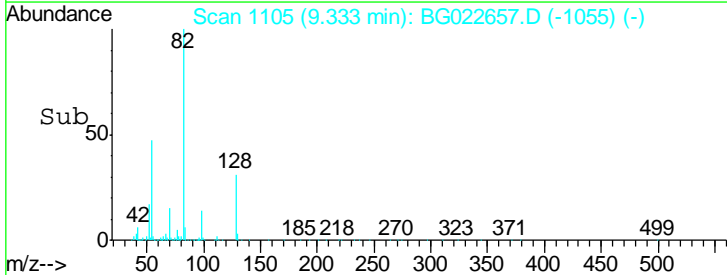
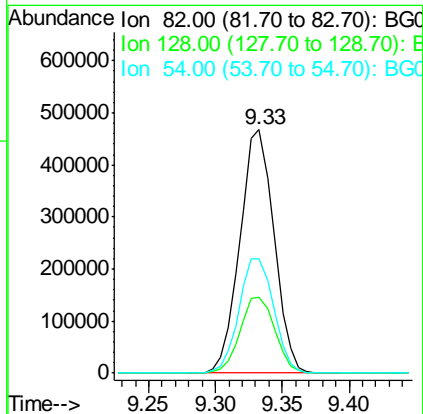
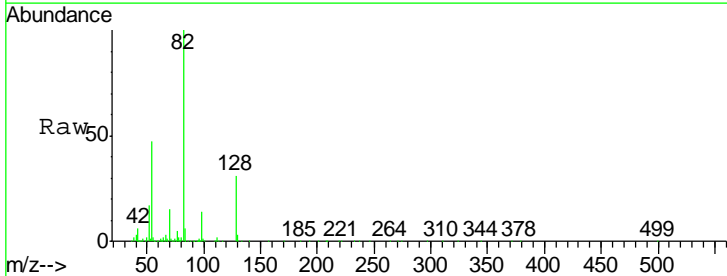
Instrument :
 BNA_G
 ClientSampleId :
 LOD-SOIL2016-01

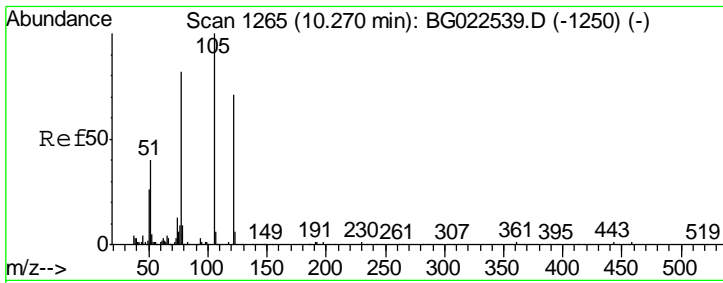
Tgt Ion	Resp	Lower	Upper
136	100		
137	10.9	9.6	14.4
54	8.0	7.3	10.9
68	6.2	5.3	7.9



#23
 Nitrobenzene-d5
 Concen: 62.98 ng
 RT: 9.33 min Scan# 1105
 Delta R.T. -0.00 min
 Lab File: BG022657.D
 Acq: 28 Jun 2016 00:38

Tgt Ion	Resp	Lower	Upper
82	100		
128	31.3	24.4	36.6
54	46.9	41.4	62.0

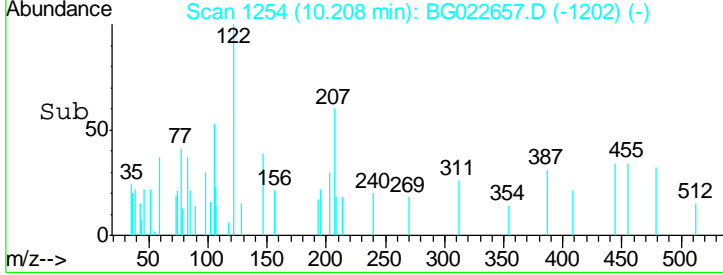
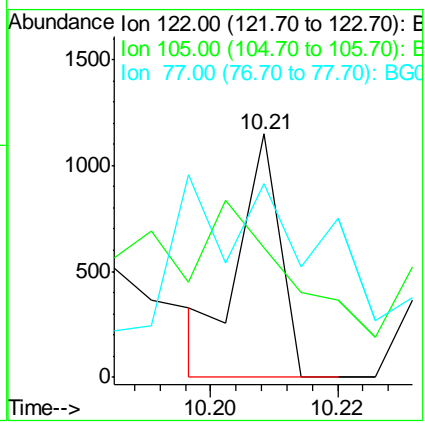
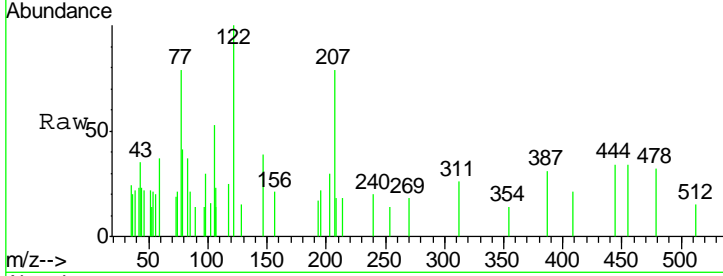




#32
 Benzoic acid
 Concen: 5.18 ng
 RT: 10.21 min Scan# 1254
 Delta R.T. 0.01 min
 Lab File: BG022657.D
 Acq: 28 Jun 2016 00:38

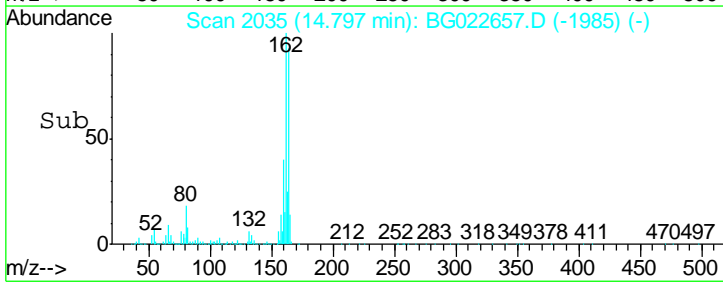
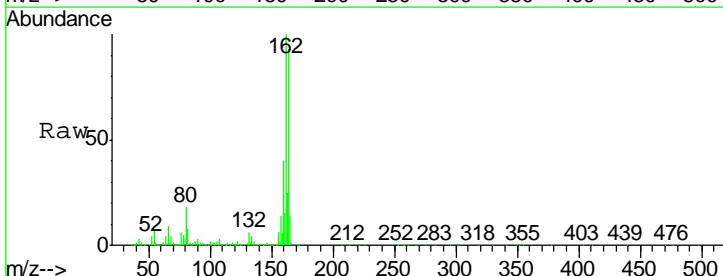
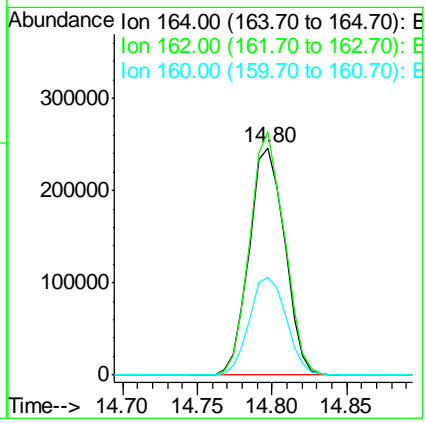
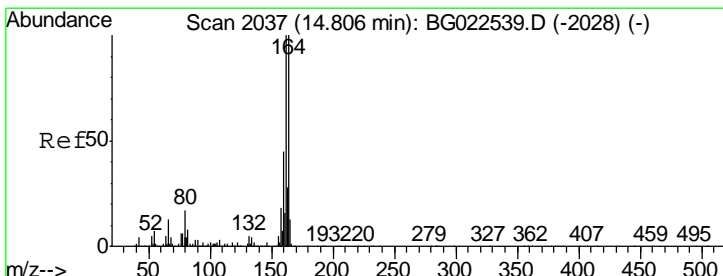
Instrument :
 BNA_G
 ClientSampleId :
 LOD-SOIL2016-01

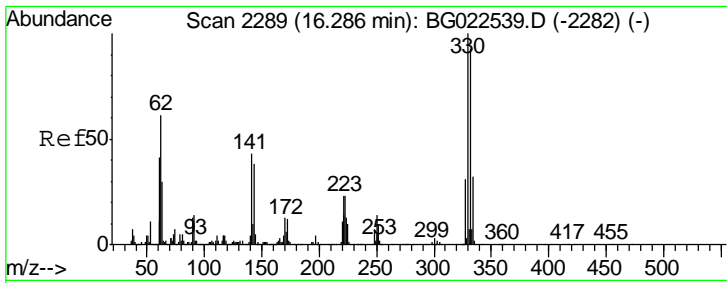
Tgt Ion	Resp	Lower	Upper
122	100		
105	53.4	117.2	157.2#
77	79.4	109.2	149.2#



#38
 Acenaphthene-d10
 Concen: 20.00 ng
 RT: 14.80 min Scan# 2035
 Delta R.T. -0.00 min
 Lab File: BG022657.D
 Acq: 28 Jun 2016 00:38

Tgt Ion	Resp	Lower	Upper
164	100		
162	107.0	87.7	131.5
160	42.8	37.2	55.8

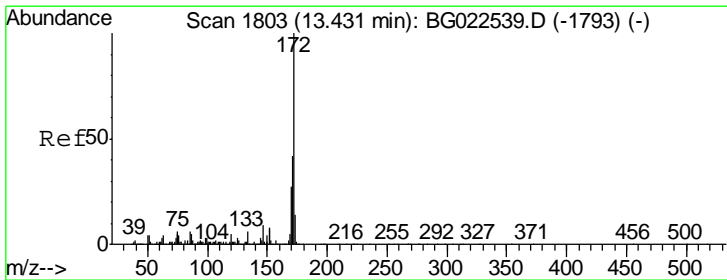
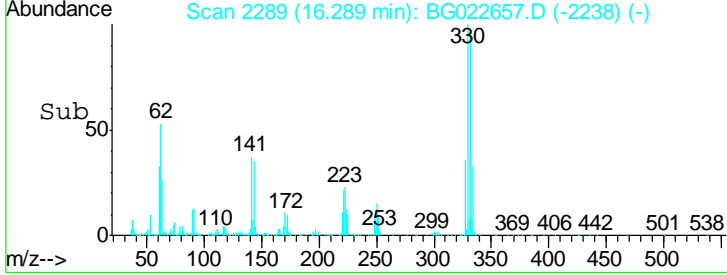
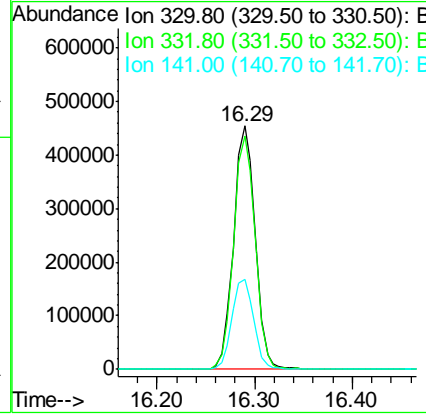
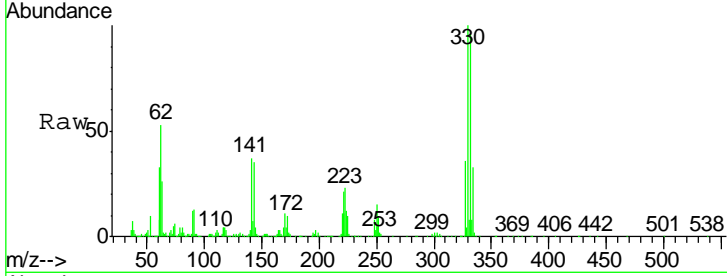




#41
 2,4,6-Tribromophenol
 Concen: 109.46 ng
 RT: 16.29 min Scan# 2289
 Delta R.T. 0.00 min
 Lab File: BG022657.D
 Acq: 28 Jun 2016 00:38

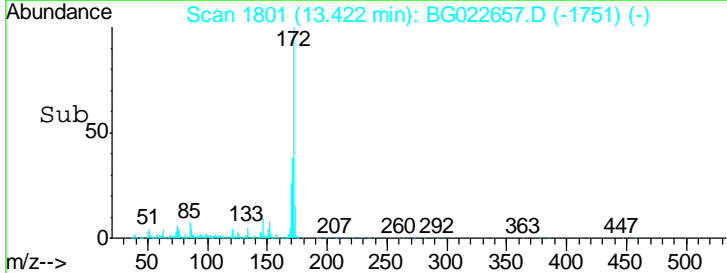
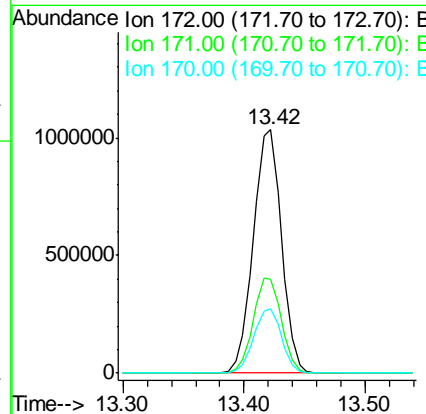
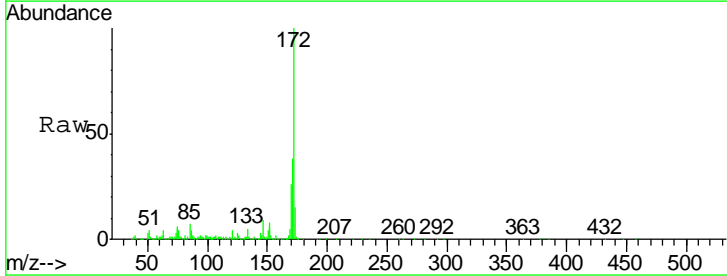
Instrument :
 BNA_G
 ClientSampleId :
 LOD-SOIL2016-01

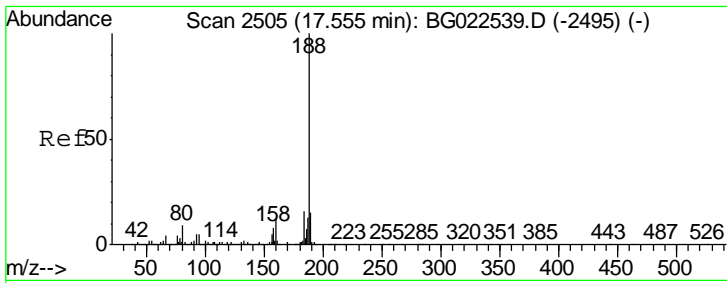
Tgt Ion	Resp	Lower	Upper
330	100		
332	95.5	77.4	116.2
141	37.3	31.7	47.5



#44
 2-Fluorobiphenyl
 Concen: 65.86 ng
 RT: 13.42 min Scan# 1801
 Delta R.T. -0.00 min
 Lab File: BG022657.D
 Acq: 28 Jun 2016 00:38

Tgt Ion	Resp	Lower	Upper
172	100		
171	38.4	31.6	47.4
170	26.2	21.3	31.9



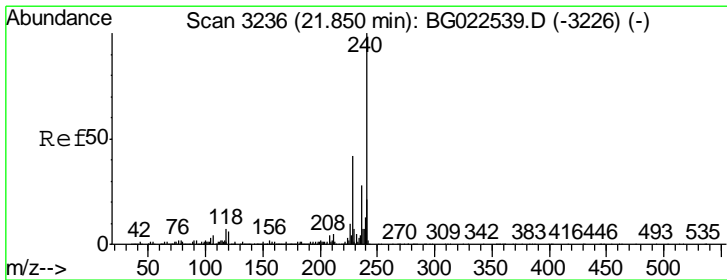
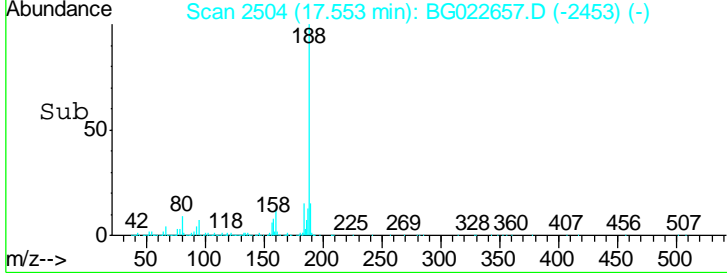
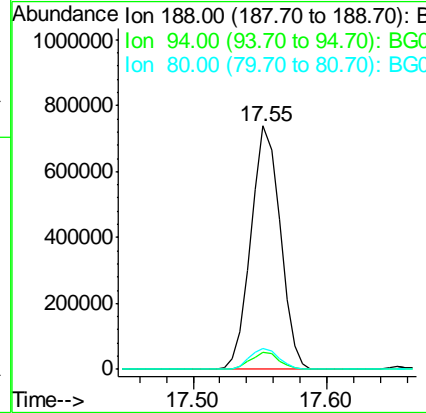
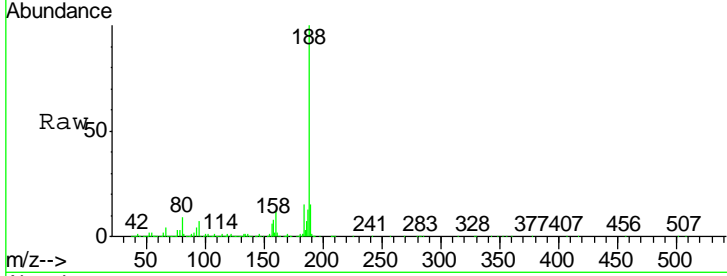


#63
 Phenanthrene-d10
 Concen: 20.00 ng
 RT: 17.55 min Scan# 2504
 Delta R.T. 0.00 min
 Lab File: BG022657.D
 Acq: 28 Jun 2016 00:38

Instrument :
 BNA_G
 ClientSampled :
 LOD-SOIL2016-01

Tgt Ion:188 Resp: 1116257

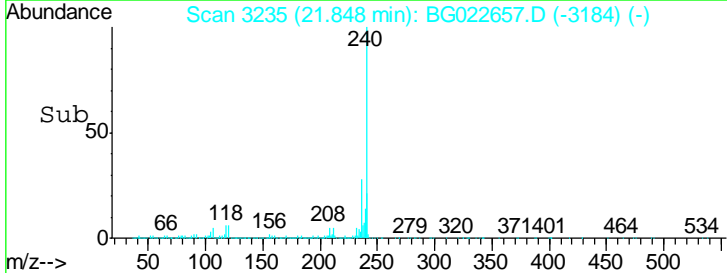
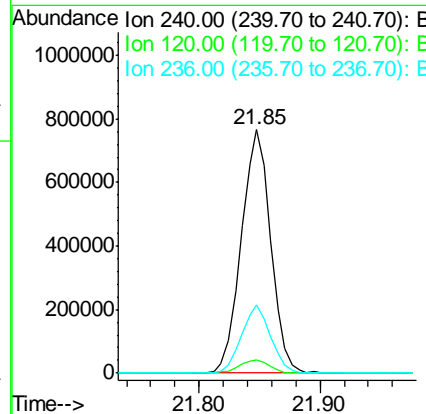
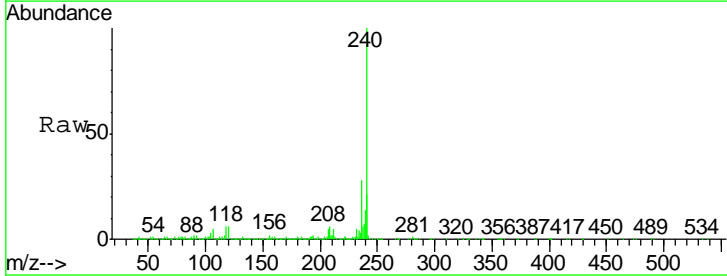
Ion	Ratio	Lower	Upper
188	100		
94	6.8	5.2	7.8
80	8.7	7.2	10.8

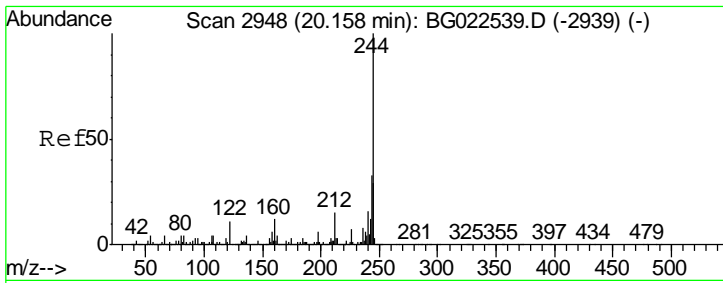


#75
 Chrysene-d12
 Concen: 20.00 ng
 RT: 21.85 min Scan# 3235
 Delta R.T. 0.00 min
 Lab File: BG022657.D
 Acq: 28 Jun 2016 00:38

Tgt Ion:240 Resp: 1294116

Ion	Ratio	Lower	Upper
240	100		
120	5.6	4.1	6.1
236	27.9	21.1	31.7

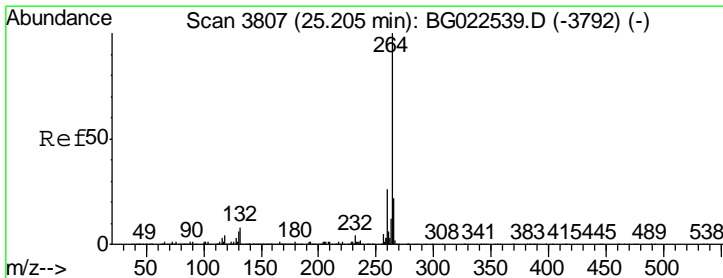
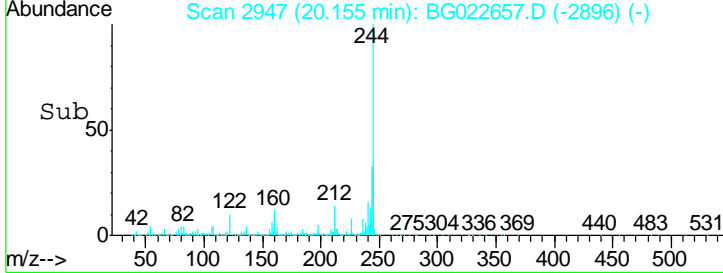
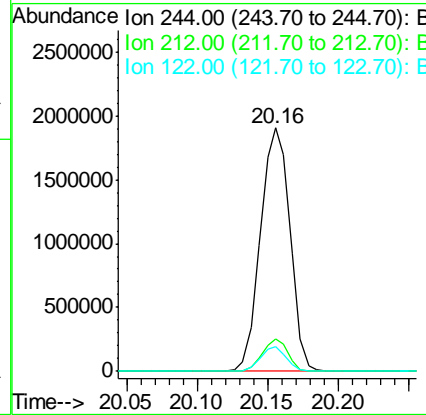
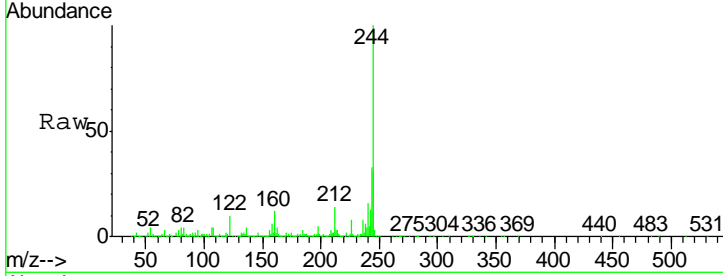




#78
 Terphenyl-d14
 Concen: 57.33 ng
 RT: 20.16 min Scan# 2947
 Delta R.T. 0.00 min
 Lab File: BG022657.D
 Acq: 28 Jun 2016 00:38

Instrument :
 BNA_G
 ClientSampled :
 LOD-SOIL2016-01

Tgt Ion	Resp	Lower	Upper
244	100		
212	13.5	10.8	16.2
122	10.3	8.0	12.0



#86
 Perylene-d12
 Concen: 20.00 ng
 RT: 25.21 min Scan# 3807
 Delta R.T. 0.00 min
 Lab File: BG022657.D
 Acq: 28 Jun 2016 00:38

Tgt Ion	Resp	Lower	Upper
264	100		
260	25.9	18.4	27.6
265	22.1	18.9	28.3

