

Data Path : Z:\HPCHEM1\BNA G\DATA\BG062717\  
 Data File : BG027702.D  
 Acq On : 27 Jun 2017 19:16  
 Operator : SJ/JU  
 Sample : I3870-01DL 25X  
 Misc :  
 ALS Vial : 3 Sample Multiplier: 1

**Instrument :**  
 BNA\_G  
**ClientSampleId :**  
 QNWP8-MW26S-GWDL

**Manual Integrations**  
**APPROVED**  
 mohammad  
 6/29/2017 8:37:36 AM

Quant Time: Jun 28 02:17:05 2017  
 Quant Method : Z:\HPCHEM1\BNA G\METHODS\8270-BG062117.M  
 Quant Title : ASP BNA STANDARDS FOR 5 POINT CALIBRATION  
 QLast Update : Wed Jun 21 18:52:15 2017  
 Response via : Initial Calibration

Internal Standards	R.T.	QIon	Response	Conc	Units	Dev(Min)	
1) 1,4-Dichlorobenzene-d4	8.49	152	11081	20.00	ng	-0.01	
21) Naphthalene-d8	11.31	136	53836	20.00	ng	-0.01	
38) Acenaphthene-d10	15.08	164	39478	20.00	ng	-0.01	
63) Phenanthrene-d10	17.83	188	118885	20.00	ng	-0.01	
75) Chrysene-d12	22.19	240	136446	20.00	ng	-0.03	
86) Perylene-d12	25.81	264	122813	20.00	ng	-0.03	
<b>System Monitoring Compounds</b>							
5) 2-Fluorophenol	6.08	112	1037	1.33	ng	0.00	
7) Phenol-d6	7.64	99	1482	1.29	ng	0.00	
23) Nitrobenzene-d5	9.66	82	3318	2.92	ng	0.00	
41) 2,4,6-Tribromophenol	16.57	330	1957	3.33	ng	-0.01	
44) 2-Fluorobiphenyl	13.71	172	9644	3.34	ng	-0.01	
78) Terphenyl-d14	20.40	244	16703	2.88	ng	-0.01	
<b>Target Compounds</b>							
20) 3+4-Methylphenols	9.24	107	4772	4.22	ng		86
27) 2,4-Dimethylphenol	10.46	122	8565	9.83	ng		99
31) Naphthalene	11.37	128	218145	74.97	ng		98
37) 2-Methylnaphthalene	12.93	142	6201	2.93	ng		95
51) Acenaphthene	15.15	154	11181	3.74	ng		95
54) Dibenzofuran	15.47	168	13129	3.37	ng		95
57) Fluorene	16.12	166	8446	2.29	ng		97
70) Phenanthrene	17.87	178	19164m	2.83	ng		

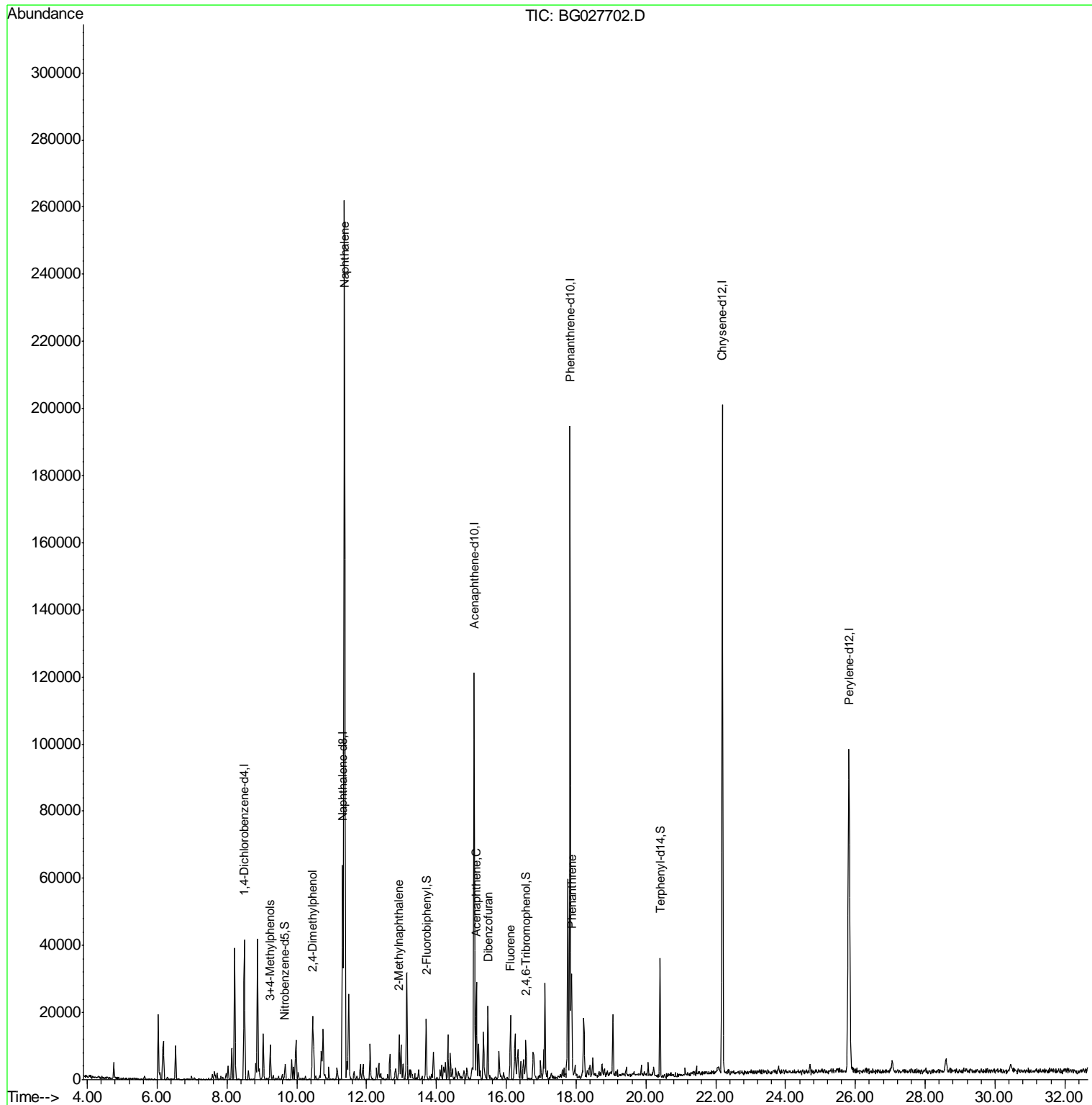
(#) = qualifier out of range (m) = manual integration (+) = signals summed

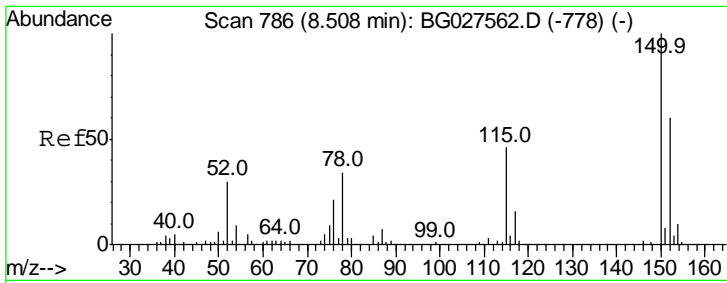
Data Path : Z:\HPCHEM1\BNA G\DATA\BG062717\  
 Data File : BG027702.D  
 Acq On : 27 Jun 2017 19:16  
 Operator : SJ/JU  
 Sample : I3870-01DL 25X  
 Misc :  
 ALS Vial : 3 Sample Multiplier: 1

**Instrument :**  
 BNA\_G  
**Client Sampled :**  
 QNWP8-MW26S-GWDL

**Manual Integrations**  
**APPROVED**  
 mohammad  
 6/29/2017 8:37:36 AM

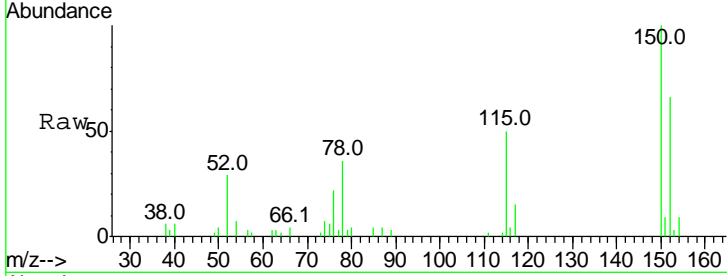
Quant Time: Jun 28 02:17:05 2017  
 Quant Method : Z:\HPCHEM1\BNA G\METHODS\8270-BG062117.M  
 Quant Title : ASP BNA STANDARDS FOR 5 POINT CALIBRATION  
 QLast Update : Wed Jun 21 18:52:15 2017  
 Response via : Initial Calibration





#1  
 1,4-Dichlorobenzene-d4  
 Concen: 20.00 ng  
 RT: 8.49 min Scan# 784  
 Delta R.T. -0.01 min  
 Lab File: BG027702.D  
 Acq: 27 Jun 2017 19:16

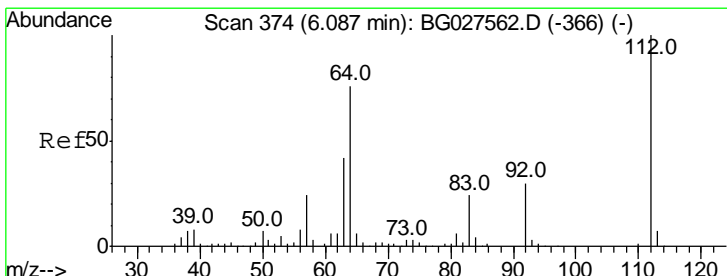
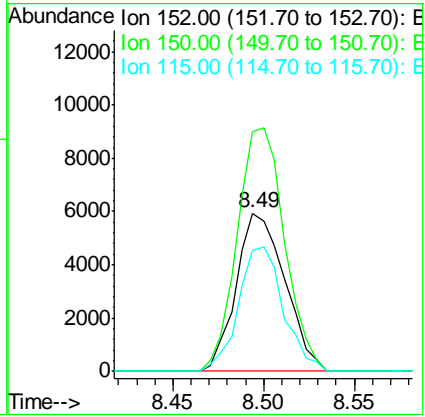
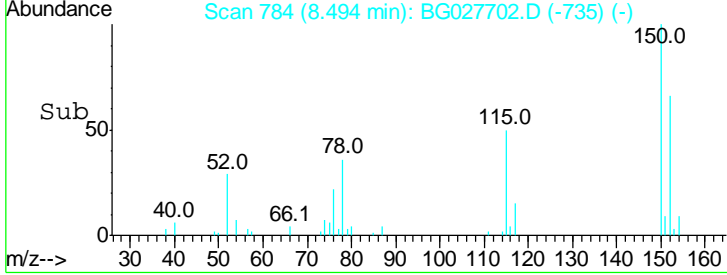
**Instrument :**  
 BNA\_G  
**ClientSampleId :**  
 QNWP8-MW26S-GWDL



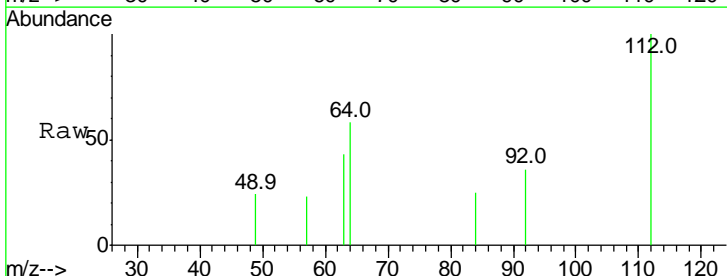
Tgt Ion:152 Resp: 11081

Ion	Ratio	Lower	Upper
152	100		
150	151.8	114.0	171.0
115	76.6	48.1	72.1#

**Manual Integrations**  
**APPROVED**  
 mohammad  
 6/29/2017 8:37:36 AM

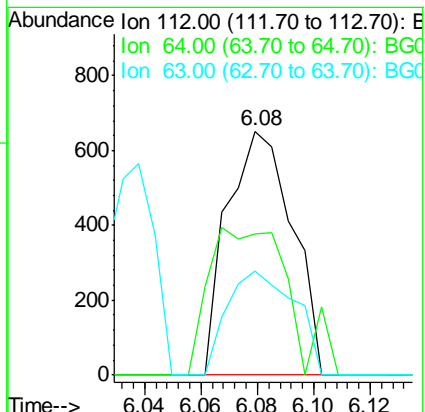
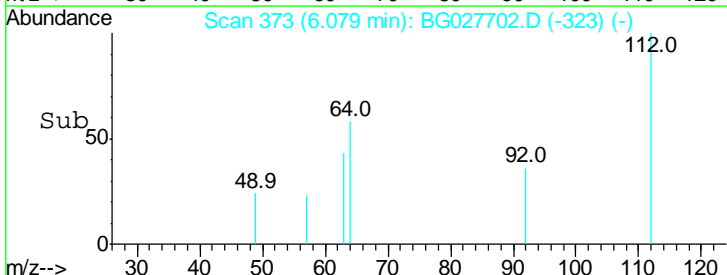


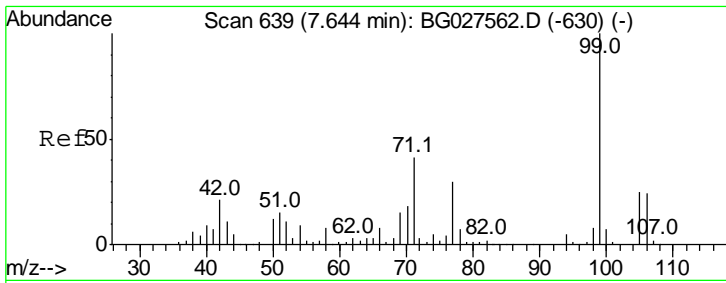
#5  
 2-Fluorophenol  
 Concen: 1.33 ng  
 RT: 6.08 min Scan# 373  
 Delta R.T. -0.01 min  
 Lab File: BG027702.D  
 Acq: 27 Jun 2017 19:16



Tgt Ion:112 Resp: 1037

Ion	Ratio	Lower	Upper
112	100		
64	58.1	61.8	92.6#
63	42.5	37.2	55.8





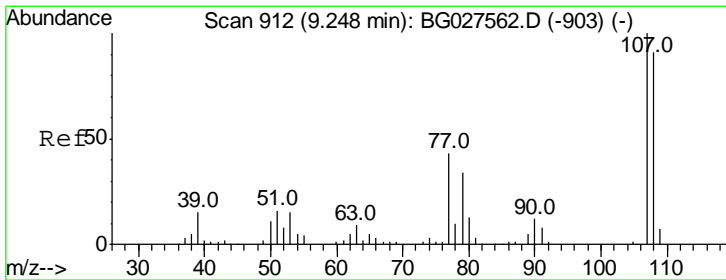
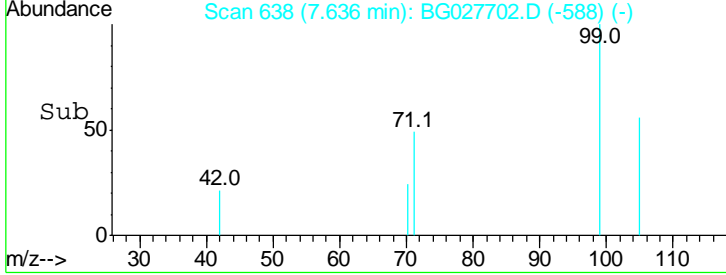
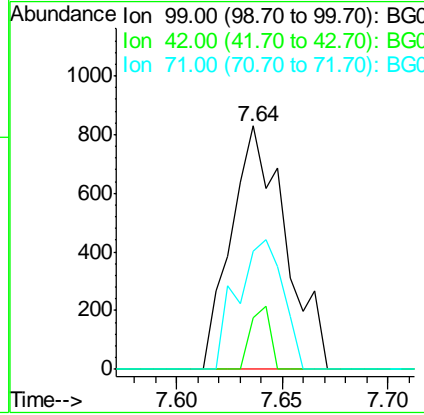
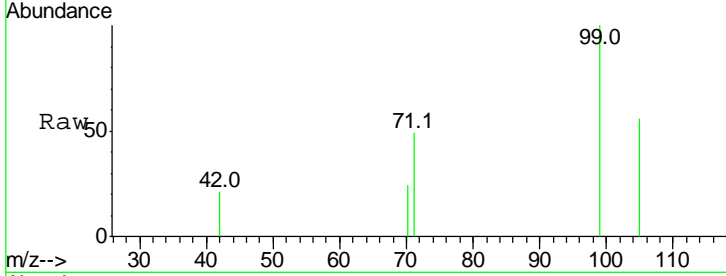
#7  
 Phenol-d6  
 Concen: 1.29 ng  
 RT: 7.64 min Scan# 638  
 Delta R.T. -0.01 min  
 Lab File: BG027702.D  
 Acq: 27 Jun 2017 19:16

**Instrument :**  
 BNA\_G  
**ClientSampleId :**  
 QNWP8-MW26S-GWDL

Tgt Ion	Resp	Lower	Upper
99	1482		
99	100		
42	21.1	20.5	30.7
71	48.6	37.6	56.4

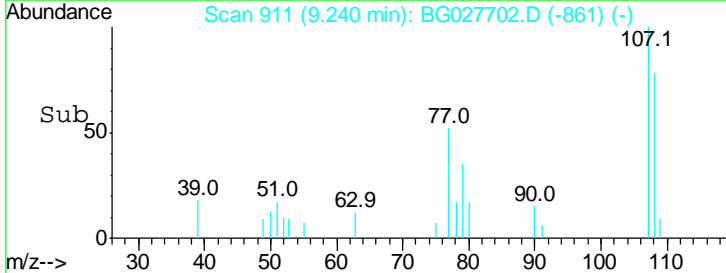
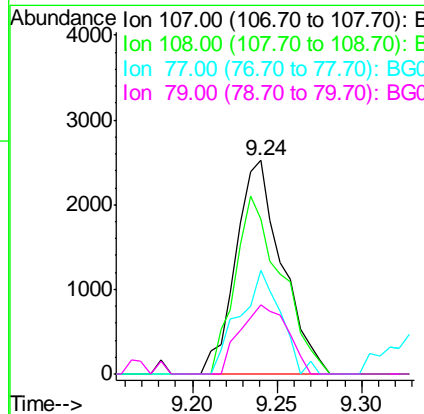
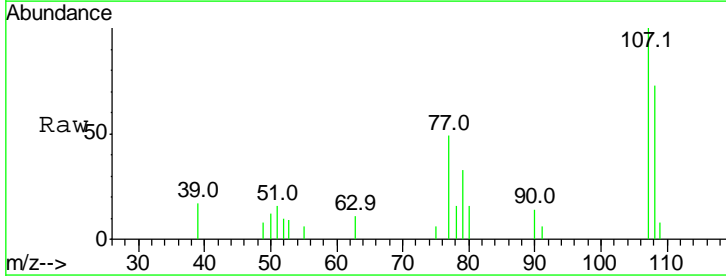
**Manual Integrations**  
**APPROVED**

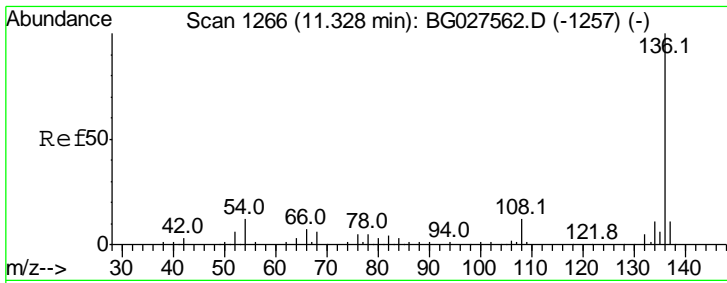
mohammad  
 6/29/2017 8:37:36 AM



#20  
 3+4-Methylphenols  
 Concen: 4.22 ng  
 RT: 9.24 min Scan# 911  
 Delta R.T. -0.01 min  
 Lab File: BG027702.D  
 Acq: 27 Jun 2017 19:16

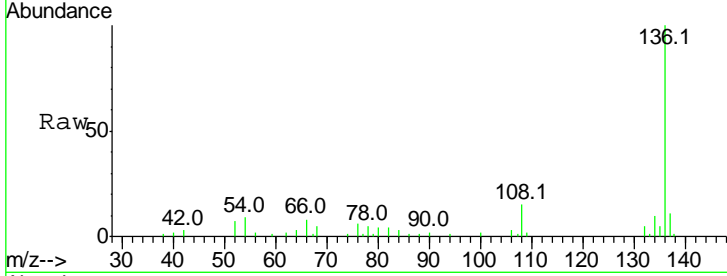
Tgt Ion	Resp	Lower	Upper
107	4772		
107	100		
108	72.7	70.8	110.8
77	48.6	25.8	65.8
79	32.6	20.1	60.1





#21  
 Naphthalene-d8  
 Concen: 20.00 ng  
 RT: 11.31 min Scan# 1264  
 Delta R.T. -0.01 min  
 Lab File: BG027702.D  
 Acq: 27 Jun 2017 19:16

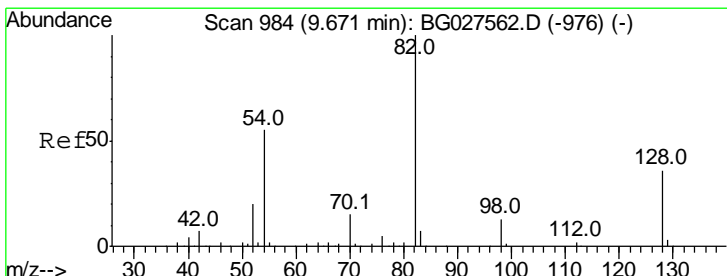
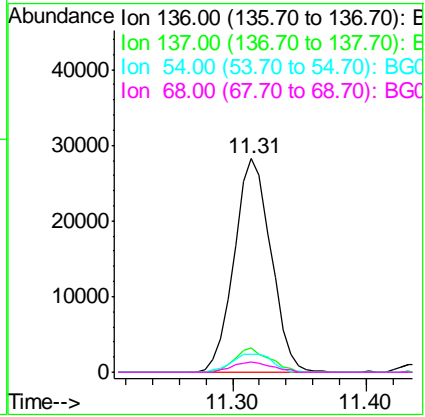
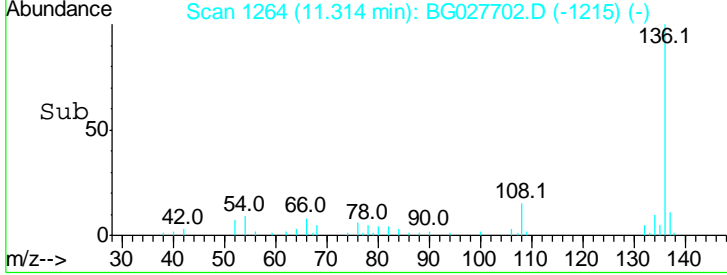
**Instrument :**  
 BNA\_G  
**ClientSampled :**  
 QNWP8-MW26S-GWDL



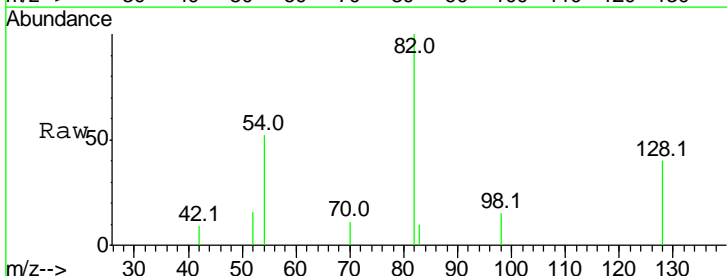
Tgt Ion: 136 Resp: 53836

Ion	Ratio	Lower	Upper
136	100		
137	11.4	8.9	13.3
54	8.7	9.3	13.9#
68	4.8	5.1	7.7#

**Manual Integrations**  
**APPROVED**  
 mohammad  
 6/29/2017 8:37:36 AM

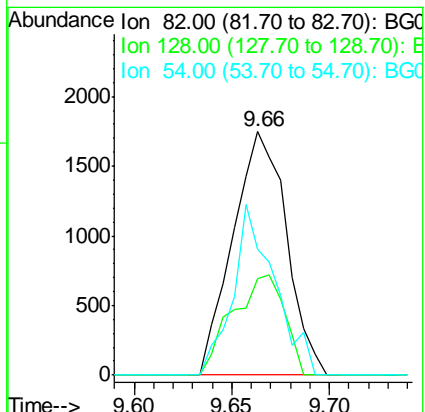
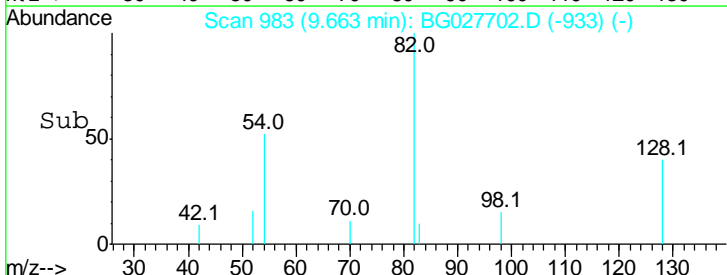


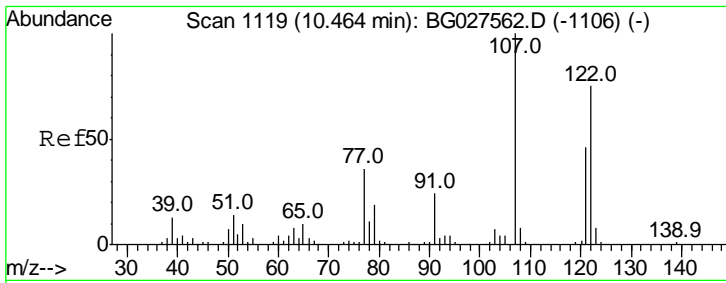
#23  
 Nitrobenzene-d5  
 Concen: 2.92 ng  
 RT: 9.66 min Scan# 983  
 Delta R.T. -0.01 min  
 Lab File: BG027702.D  
 Acq: 27 Jun 2017 19:16



Tgt Ion: 82 Resp: 3318

Ion	Ratio	Lower	Upper
82	100		
128	39.6	26.4	39.6#
54	51.6	49.4	74.2





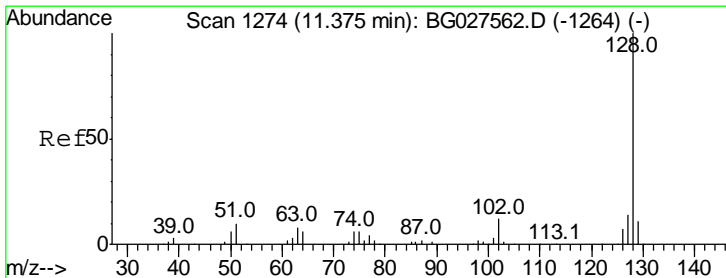
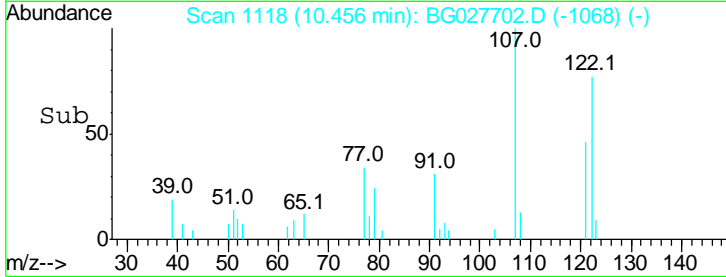
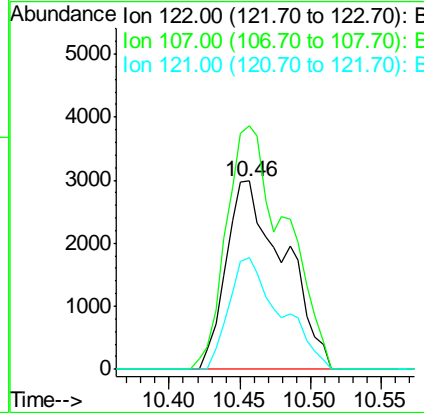
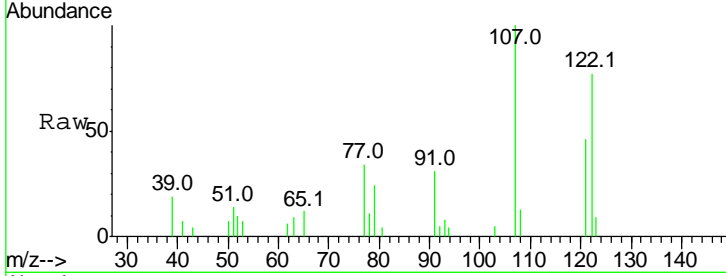
#27  
 2,4-Dimethylphenol  
 Concen: 9.83 ng  
 RT: 10.46 min Scan# 1118  
 Delta R.T. -0.01 min  
 Lab File: BG027702.D  
 Acq: 27 Jun 2017 19:16

**Instrument :**  
 BNA\_G  
**ClientSampled :**  
 QNWP8-MW26S-GWDL

Tgt Ion	Resp	Lower	Upper
122	8565		
107	129.4	104.2	156.4
121	59.2	46.0	69.0

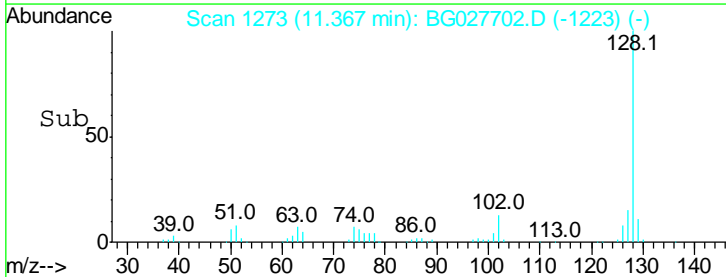
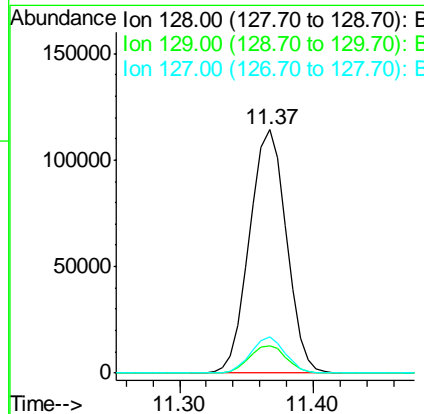
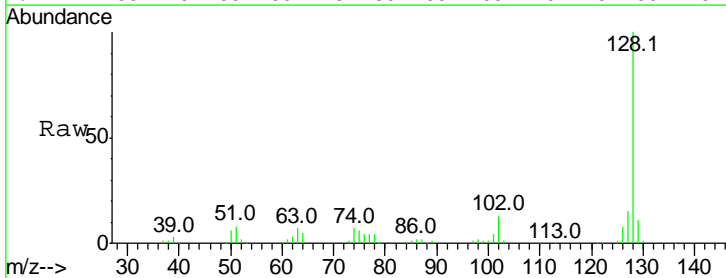
**Manual Integrations**  
**APPROVED**

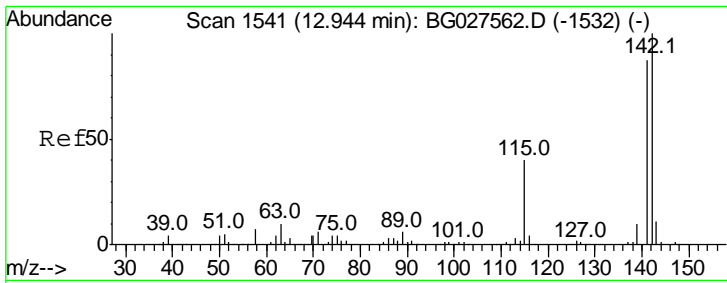
mohammad  
 6/29/2017 8:37:36 AM



#31  
 Naphthalene  
 Concen: 74.97 ng  
 RT: 11.37 min Scan# 1273  
 Delta R.T. -0.01 min  
 Lab File: BG027702.D  
 Acq: 27 Jun 2017 19:16

Tgt Ion	Resp	Lower	Upper
128	218145		
129	11.0	9.3	13.9
127	15.0	11.4	17.0





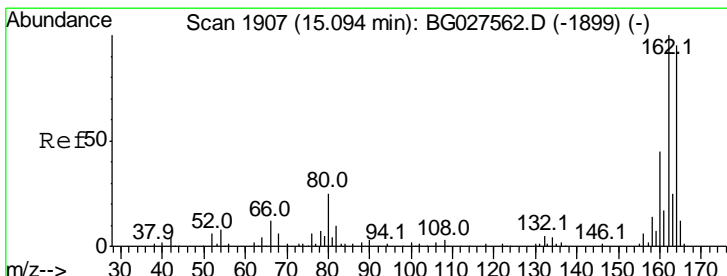
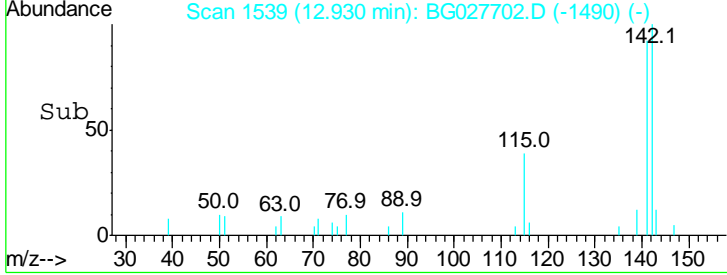
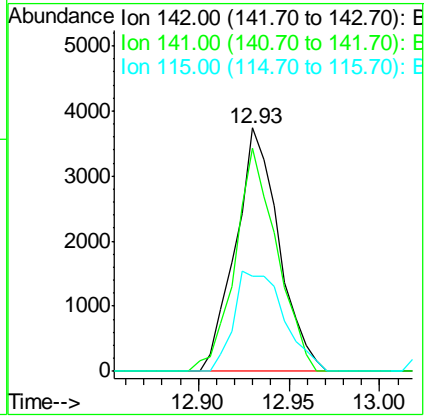
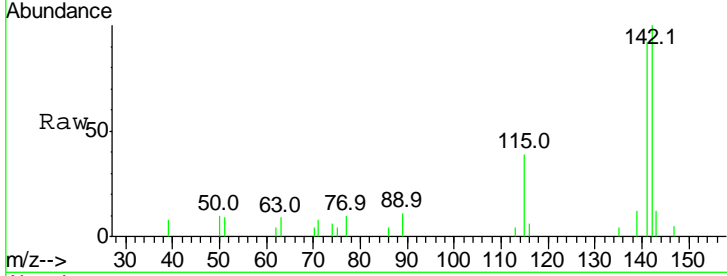
#37  
 2-Methylnaphthalene  
 Concen: 2.93 ng  
 RT: 12.93 min Scan# 1539  
 Delta R.T. -0.01 min  
 Lab File: BG027702.D  
 Acq: 27 Jun 2017 19:16

Instrument :  
 BNA\_G  
 ClientSampleID :  
 QNWP8-MW26S-GWDL

Tgt Ion	Ratio	Lower	Upper
142	100		
141	91.8	70.4	105.6
115	39.2	35.5	53.3

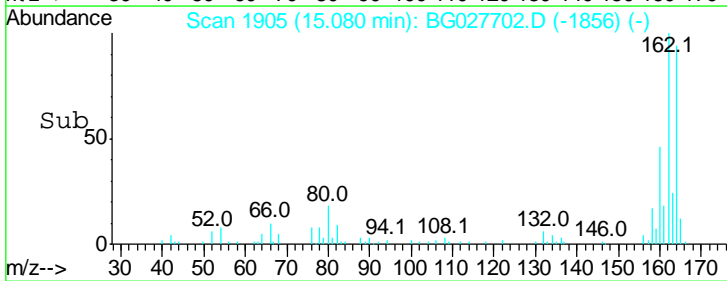
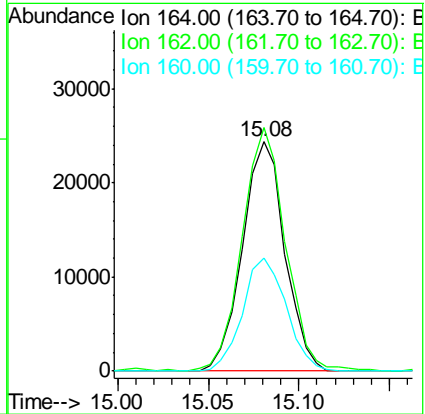
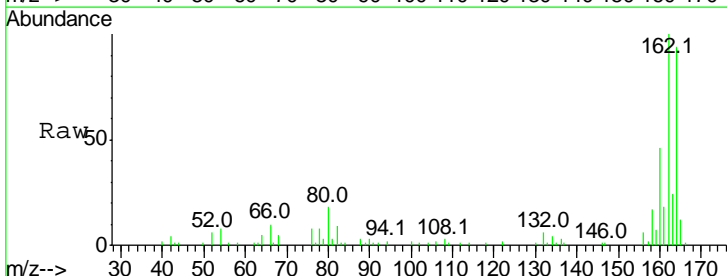
Manual Integrations  
 APPROVED

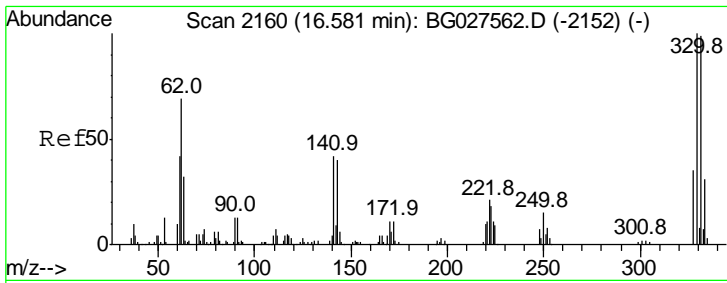
mohammad  
 6/29/2017 8:37:36 AM



#38  
 Acenaphthene-d10  
 Concen: 20.00 ng  
 RT: 15.08 min Scan# 1905  
 Delta R.T. -0.01 min  
 Lab File: BG027702.D  
 Acq: 27 Jun 2017 19:16

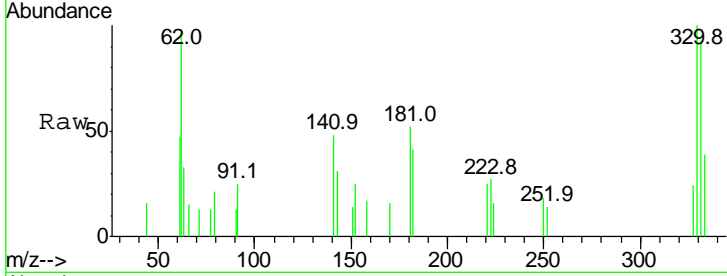
Tgt Ion	Ratio	Lower	Upper
164	100		
162	106.1	85.1	127.7
160	49.2	34.7	52.1





#41  
 2,4,6-Tribromophenol  
 Concen: 3.33 ng  
 RT: 16.57 min Scan# 2158  
 Delta R.T. -0.01 min  
 Lab File: BG027702.D  
 Acq: 27 Jun 2017 19:16

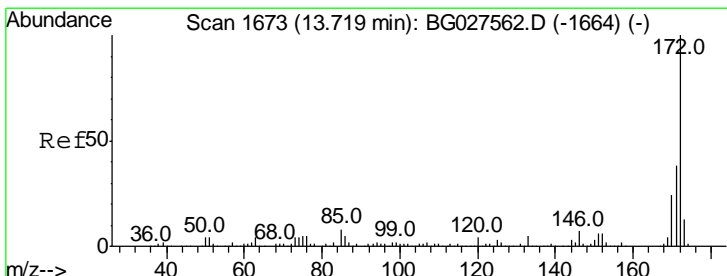
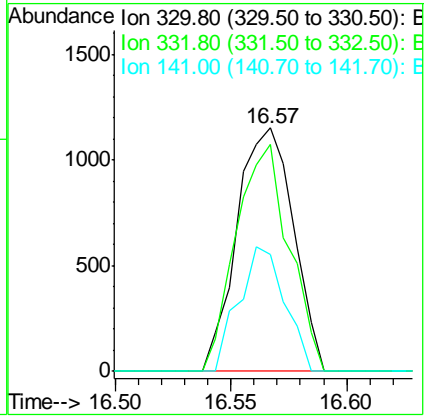
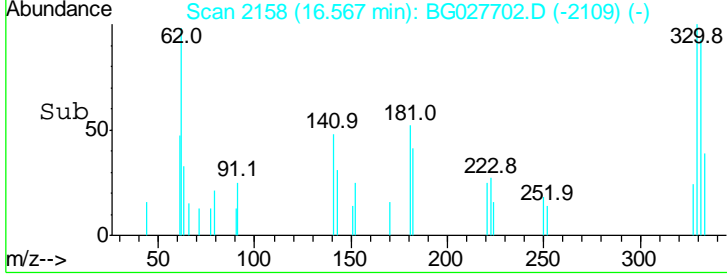
Instrument :  
 BNA\_G  
 ClientSampleId :  
 QNWP8-MW26S-GWDL



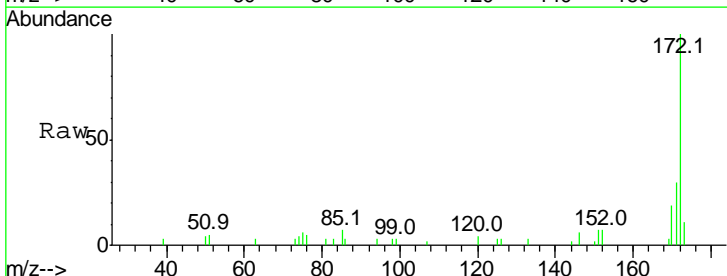
Tgt Ion: 330 Resp: 1957

Ion	Ratio	Lower	Upper
330	100		
332	87.7	77.3	115.9
141	41.6	32.1	48.1

Manual Integrations  
**APPROVED**  
 mohammad  
 6/29/2017 8:37:36 AM

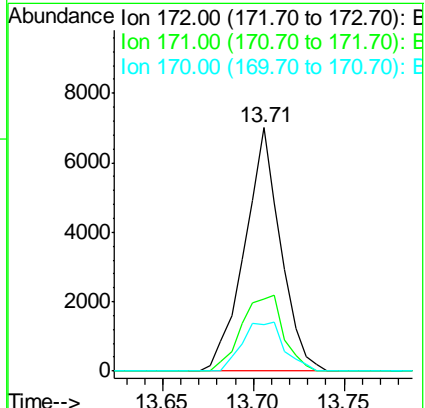
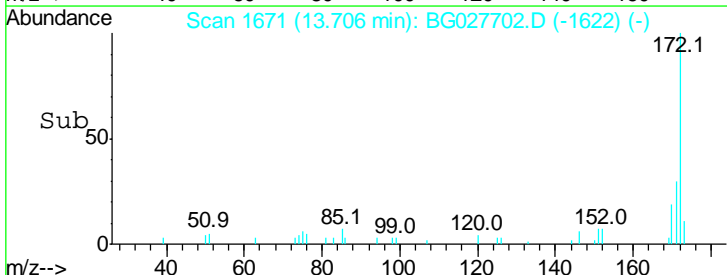


#44  
 2-Fluorobiphenyl  
 Concen: 3.34 ng  
 RT: 13.71 min Scan# 1671  
 Delta R.T. -0.01 min  
 Lab File: BG027702.D  
 Acq: 27 Jun 2017 19:16

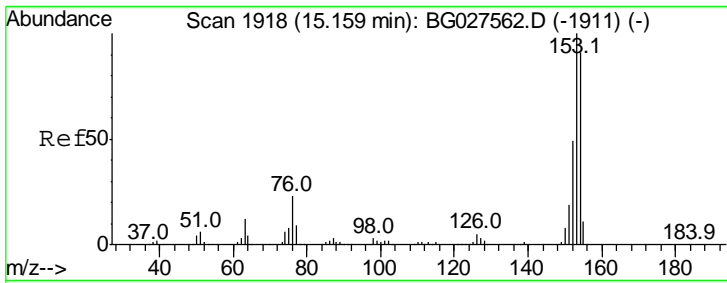


Tgt Ion: 172 Resp: 9644

Ion	Ratio	Lower	Upper
172	100		
171	29.7	32.2	48.2#
170	18.9	21.8	32.6#







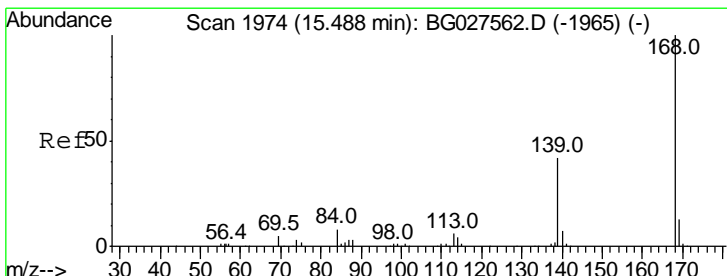
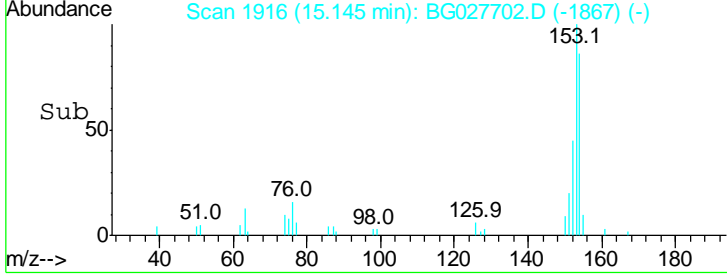
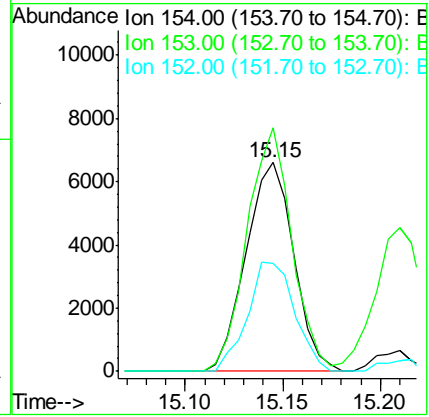
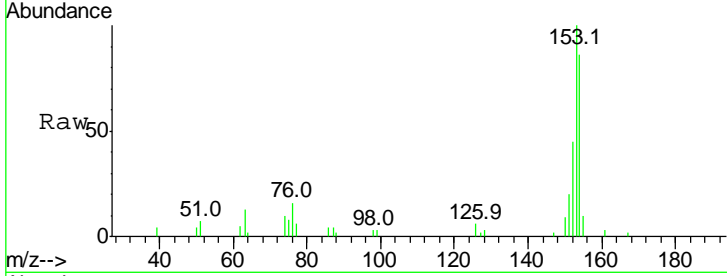
#51  
 Acenaphthene  
 Concen: 3.74 ng  
 RT: 15.15 min Scan# 1916  
 Delta R.T. -0.01 min  
 Lab File: BG027702.D  
 Acq: 27 Jun 2017 19:16

Instrument :  
 BNA\_G  
 ClientSampled :  
 QNWP8-MW26S-GWDL

Tgt Ion	Resp	Lower	Upper
154	100		
153	116.8	87.8	131.6
152	52.1	42.2	63.4

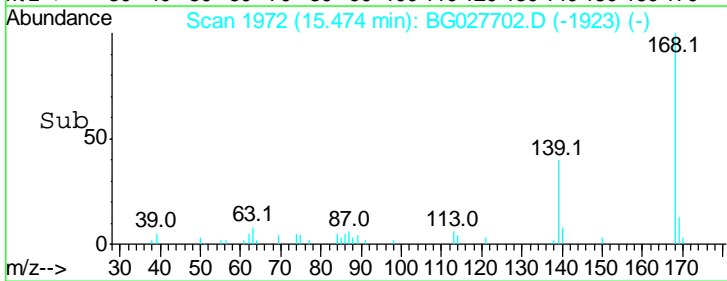
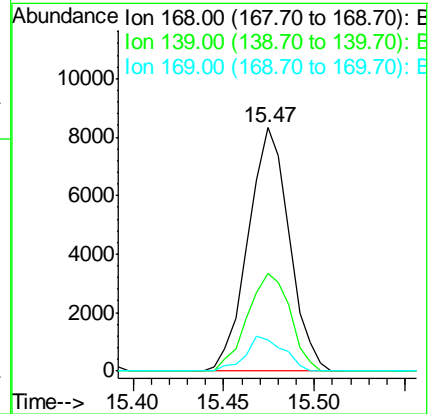
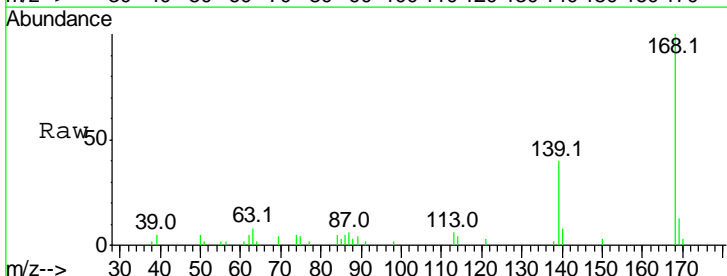
Manual Integrations  
 APPROVED

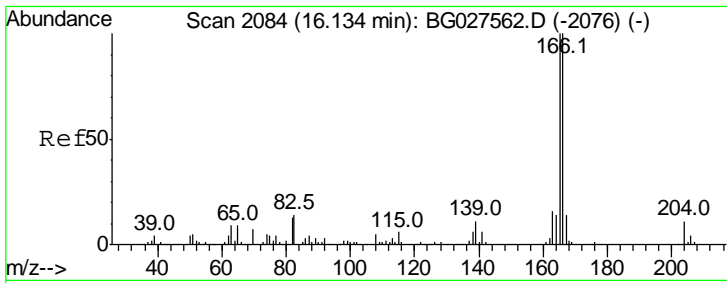
mohammad  
 6/29/2017 8:37:36 AM



#54  
 Dibenzofuran  
 Concen: 3.37 ng  
 RT: 15.47 min Scan# 1972  
 Delta R.T. -0.01 min  
 Lab File: BG027702.D  
 Acq: 27 Jun 2017 19:16

Tgt Ion	Resp	Lower	Upper
168	100		
139	40.4	35.3	52.9
169	12.6	11.5	17.3





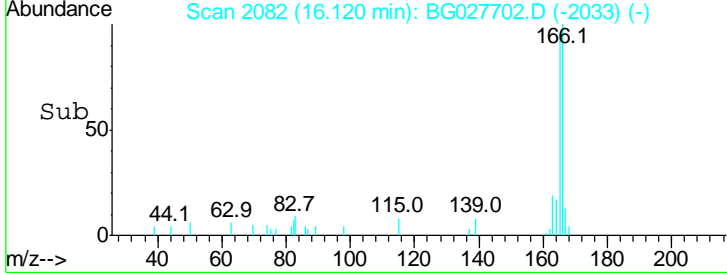
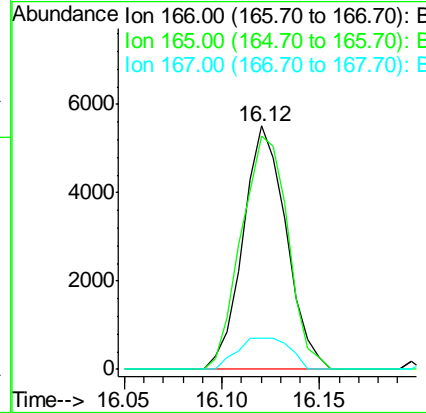
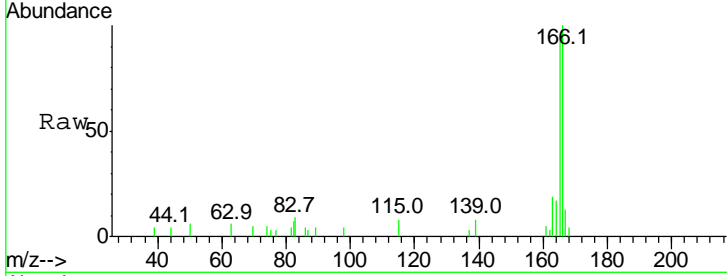
#57  
 Fluorene  
 Concen: 2.29 ng  
 RT: 16.12 min Scan# 2082  
 Delta R.T. -0.01 min  
 Lab File: BG027702.D  
 Acq: 27 Jun 2017 19:16

**Instrument :**  
 BNA\_G  
**ClientSampled :**  
 QNWP8-MW26S-GWDL

Tgt Ion	Resp	Lower	Upper
166	100		
165	96.0	78.6	117.8
167	12.7	11.6	17.4

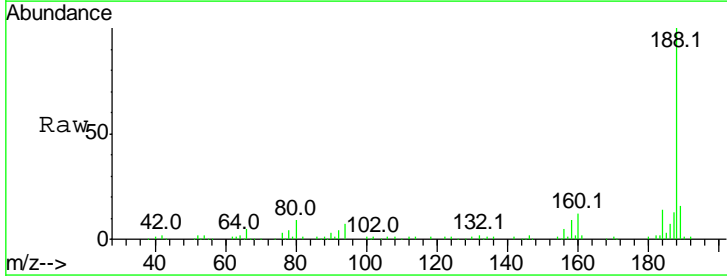
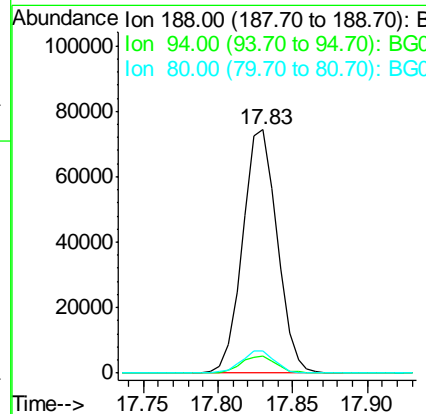
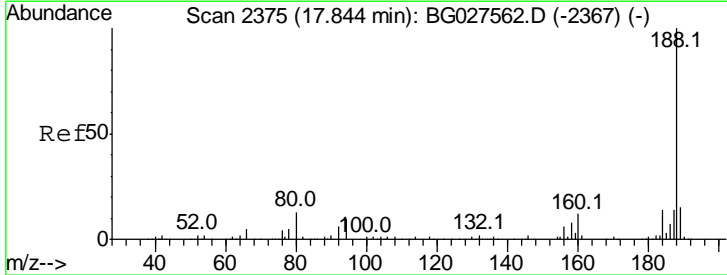
**Manual Integrations**  
**APPROVED**

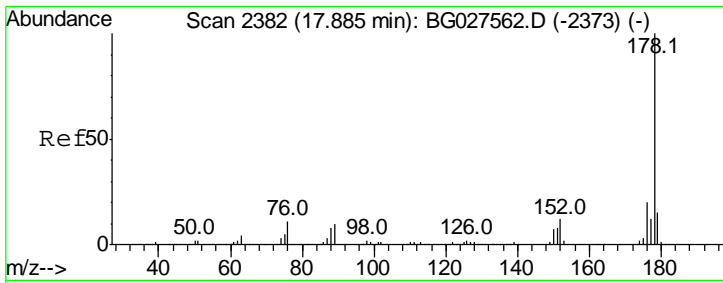
mohammad  
 6/29/2017 8:37:36 AM



#63  
 Phenanthrene-d10  
 Concen: 20.00 ng  
 RT: 17.83 min Scan# 2373  
 Delta R.T. -0.01 min  
 Lab File: BG027702.D  
 Acq: 27 Jun 2017 19:16

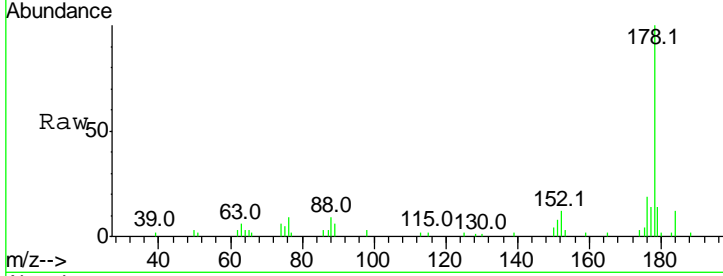
Tgt Ion	Resp	Lower	Upper
188	100		
94	6.9	5.8	8.8
80	9.1	7.5	11.3





#70  
 Phenanthrene  
 Concen: 2.83 ng m  
 RT: 17.87 min Scan# 2380  
 Delta R.T. -0.01 min  
 Lab File: BG027702.D  
 Acq: 27 Jun 2017 19:16

Instrument :  
 BNA\_G  
 ClientSampleId :  
 QNWP8-MW26S-GWDL

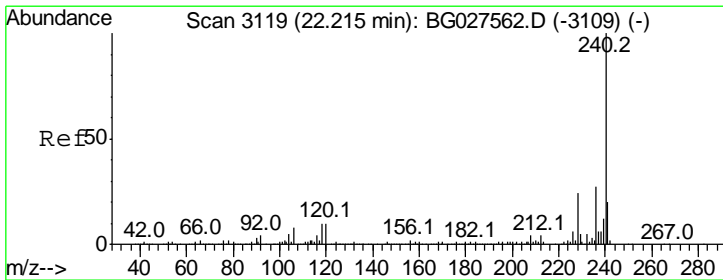
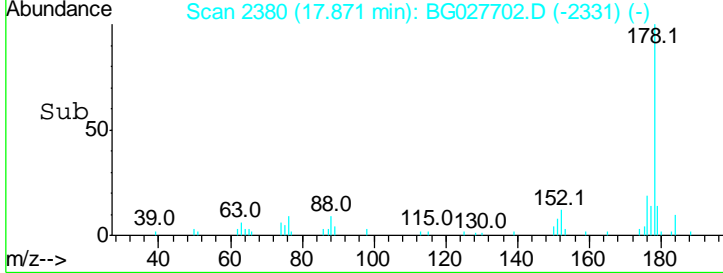
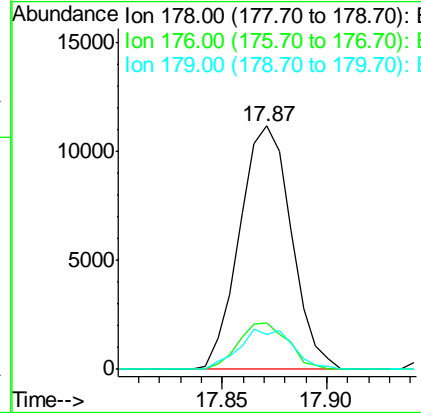


Tgt Ion: 178 Resp: 19164

Ion	Ratio	Lower	Upper
178	100		
176	19.0	17.7	26.5
179	14.3	15.0	22.6

Manual Integrations  
 APPROVED

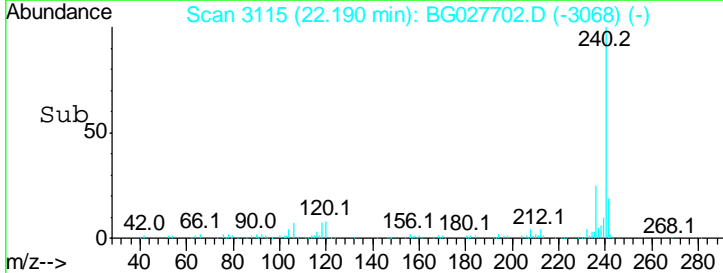
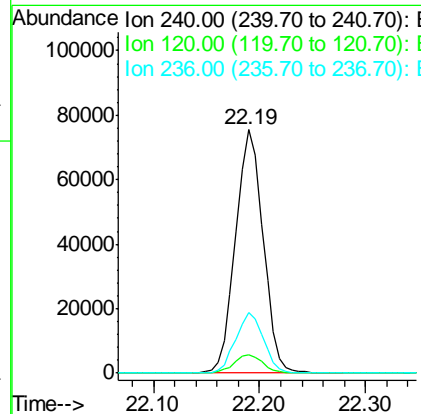
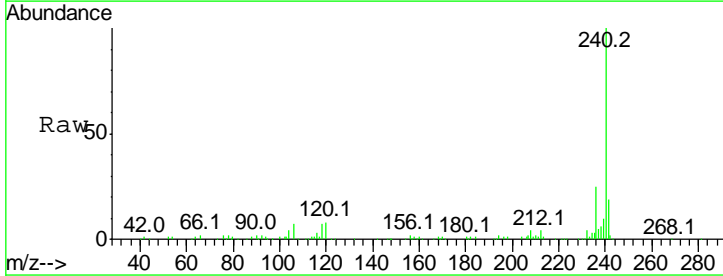
mohammad  
 6/29/2017 8:37:36 AM

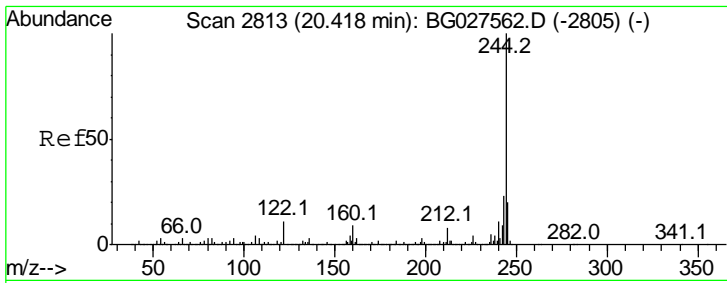


#75  
 Chrysene-d12  
 Concen: 20.00 ng  
 RT: 22.19 min Scan# 3115  
 Delta R.T. -0.03 min  
 Lab File: BG027702.D  
 Acq: 27 Jun 2017 19:16

Tgt Ion: 240 Resp: 136446

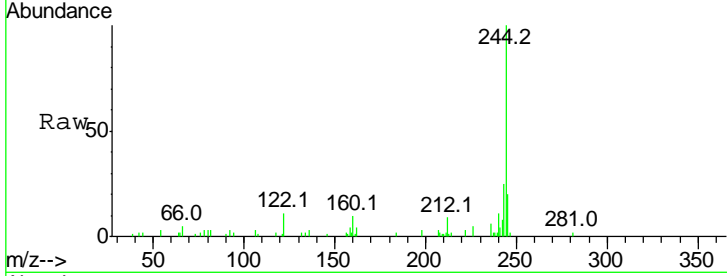
Ion	Ratio	Lower	Upper
240	100		
120	7.7	5.7	8.5
236	24.8	22.2	33.4





#78  
 Terphenyl-d14  
 Concen: 2.88 ng  
 RT: 20.40 min Scan# 2811  
 Delta R.T. -0.01 min  
 Lab File: BG027702.D  
 Acq: 27 Jun 2017 19:16

**Instrument :**  
 BNA\_G  
**Client Sampled :**  
 QNWP8-MW26S-GWDL

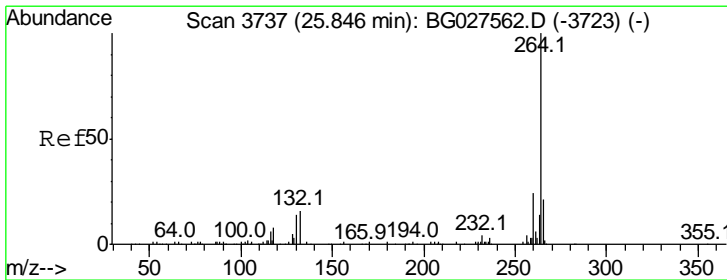
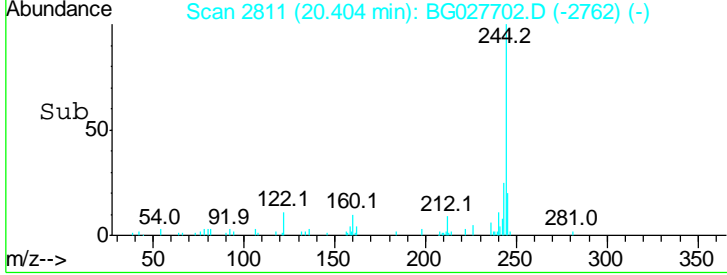
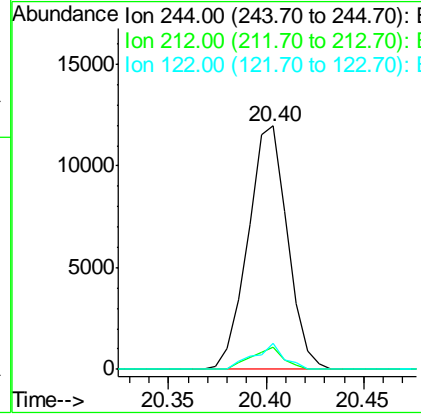


Tgt Ion: 244 Resp: 16703

Ion	Ratio	Lower	Upper
244	100		
212	9.3	10.0	15.0#
122	10.7	8.6	12.8

**Manual Integrations**  
**APPROVED**

mohammad  
 6/29/2017 8:37:36 AM



#86  
 Perylene-d12  
 Concen: 20.00 ng  
 RT: 25.81 min Scan# 3732  
 Delta R.T. -0.03 min  
 Lab File: BG027702.D  
 Acq: 27 Jun 2017 19:16

Tgt Ion: 264 Resp: 122813

Ion	Ratio	Lower	Upper
264	100		
260	22.8	21.8	32.8
265	19.0	18.2	27.4

