

Data Path : Z:\SVOASRV\HPCHEM1\BNA_G\DATA\BG062719\
 Data File : BG041506.D
 Acq On : 28 Jun 2019 3:50
 Operator : HP/JU
 Sample : K3526-04
 Misc :
 ALS Vial : 16 Sample Multiplier: 1

Instrument :
 BNA_G
 ClientSampleId :
 M-8

Quant Time: Jun 28 05:55:35 2019
 Quant Method : Z:\SVOASRV\HPCHEM1\BNA_G\METHODS\8270-BG062619.M
 Quant Title : ASP BNA STANDARDS FOR 5 POINT CALIBRATION
 QLast Update : Thu Jun 27 13:25:55 2019
 Response via : Initial Calibration

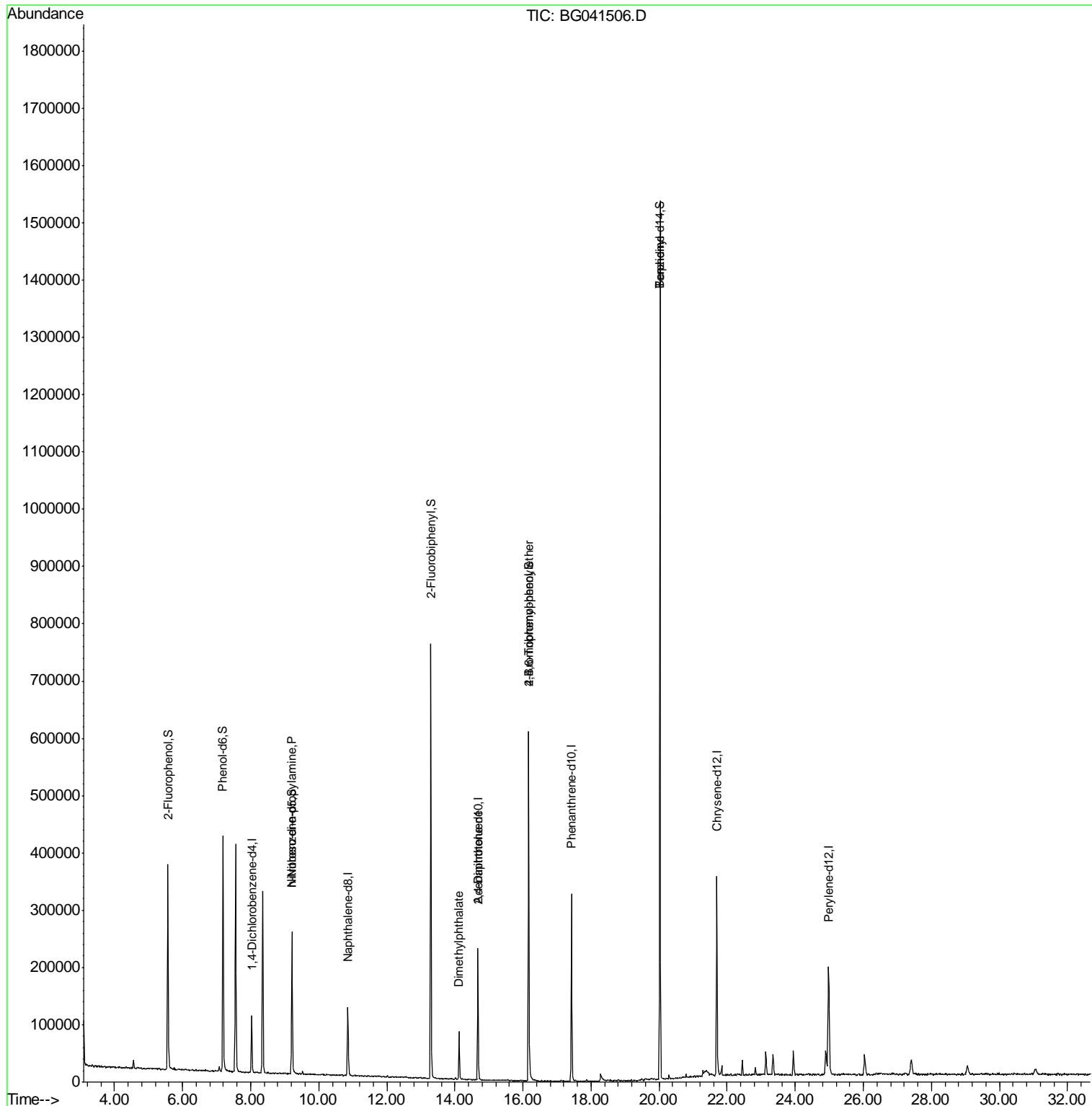
Internal Standards	R.T.	QIon	Response	Conc	Units	Dev(Min)
1) 1,4-Dichlorobenzene-d4	8.03	152	29732	20.00	ng	0.00
21) Naphthalene-d8	10.85	136	107280	20.00	ng	0.00
39) Acenaphthene-d10	14.67	164	76228	20.00	ng	0.00
64) Phenanthrene-d10	17.42	188	206813	20.00	ng	0.00
76) Chrysene-d12	21.70	240	220860	20.00	ng	0.00
87) Perylene-d12	24.98	264	232890	20.00	ng	0.00
System Monitoring Compounds						
5) 2-Fluorophenol	5.57	112	151910	91.09	ng	0.00
7) Phenol-d6	7.18	99	224998	95.84	ng	0.00
23) Nitrobenzene-d5	9.21	82	156632	60.89	ng	0.00
42) 2,4,6-Tribromophenol	16.17	330	120698	92.73	ng	0.00
45) 2-Fluorobiphenyl	13.29	172	382701	64.43	ng	0.00
79) Terphenyl-d14	20.02	244	749189	72.09	ng	0.00
Target Compounds						
19) n-Nitroso-di-n-propylamine	9.21	70	22729	12.980	ng	# 73
50) Dimethylphthalate	14.12	163	61920	8.926	ng	97
57) 2,4-Dinitrotoluene	14.67	165	9890	4.631	ng	# 21
67) 4-Bromophenyl-phenylether	16.17	248	8200	2.901	ng	# 1
77) Benzidine	20.02	184	12938	2.640	ng	# 97

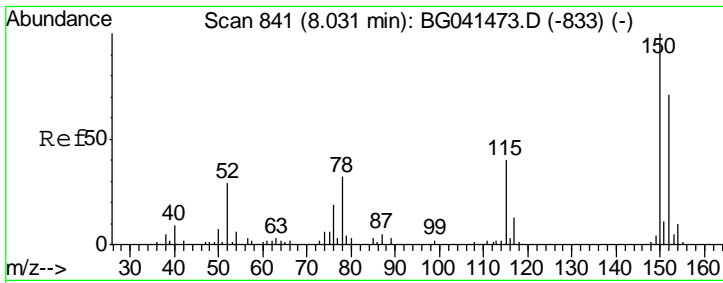
(#) = qualifier out of range (m) = manual integration (+) = signals summed

Data Path : Z:\SVOASRV\HPCHEM1\BNA_G\DATA\BG062719\
 Data File : BG041506.D
 Acq On : 28 Jun 2019 3:50
 Operator : HP/JU
 Sample : K3526-04
 Misc :
 ALS Vial : 16 Sample Multiplier: 1

Instrument :
 BNA_G
 ClientSampled :
 M-8

Quant Time: Jun 28 05:55:35 2019
 Quant Method : Z:\SVOASRV\HPCHEM1\BNA_G\METHODS\8270-BG062619.M
 Quant Title : ASP BNA STANDARDS FOR 5 POINT CALIBRATION
 QLast Update : Thu Jun 27 13:25:55 2019
 Response via : Initial Calibration

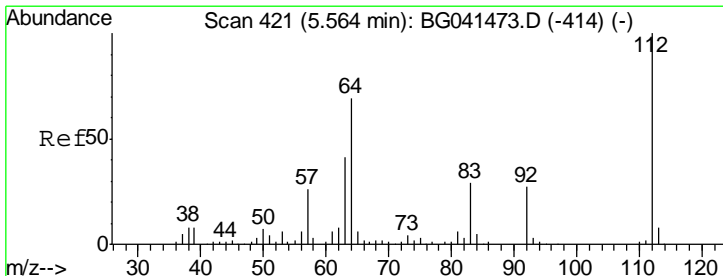
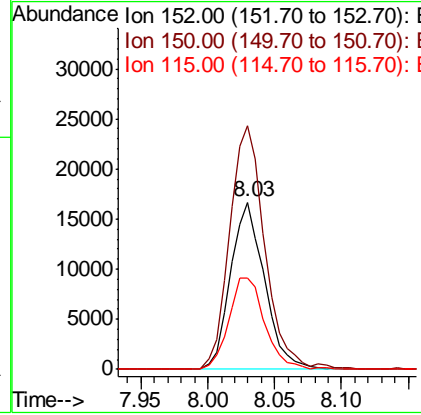
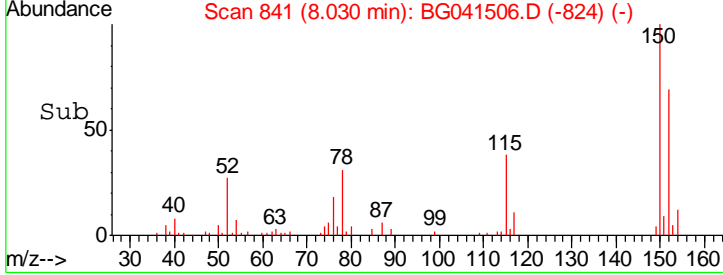
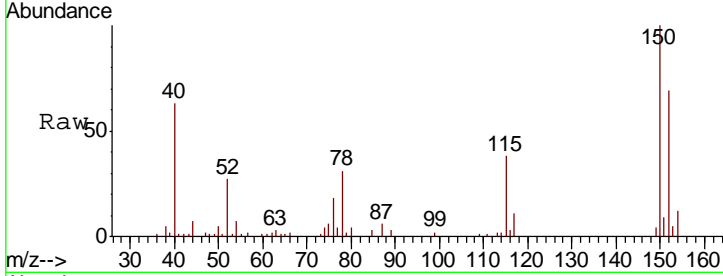




#1
 1,4-Dichlorobenzene-d4
 Concen: 20.000 ng
 RT: 8.03 min Scan# 841
 Delta R.T. -0.00 min
 Lab File: BG041506.D
 Acq: 28 Jun 2019 3:50

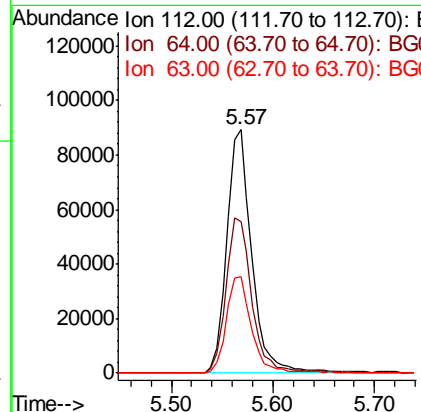
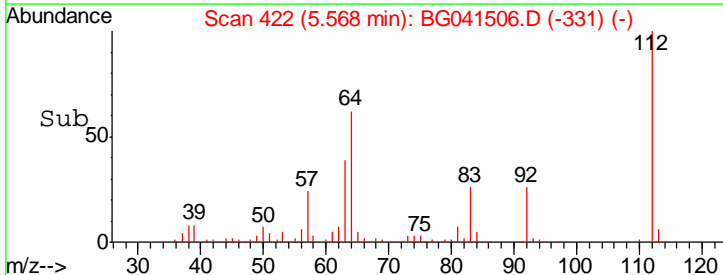
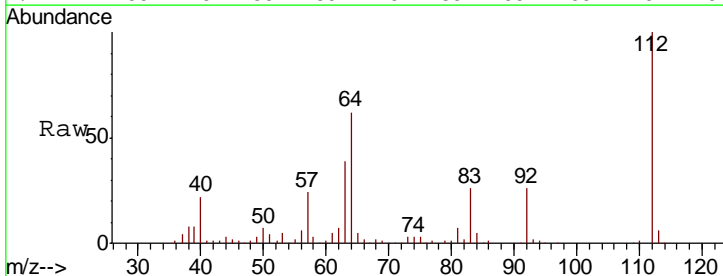
Instrument :
 BNA_G
 ClientSampled :
 M-8

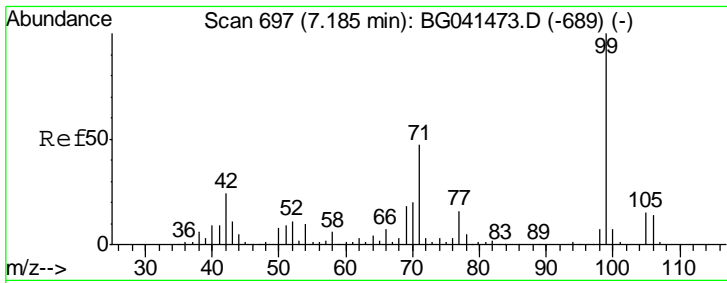
Tgt Ion	Resp	Lower	Upper
152	29732		
152	100		
150	145.8	112.4	168.6
115	54.9	44.6	66.8



#5
 2-Fluorophenol
 Concen: 91.091 ng
 RT: 5.57 min Scan# 422
 Delta R.T. 0.00 min
 Lab File: BG041506.D
 Acq: 28 Jun 2019 3:50

Tgt Ion	Resp	Lower	Upper
112	151910		
112	100		
64	62.5	55.1	82.7
63	39.5	32.4	48.6

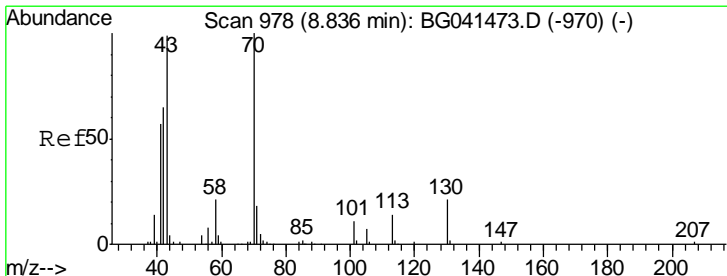
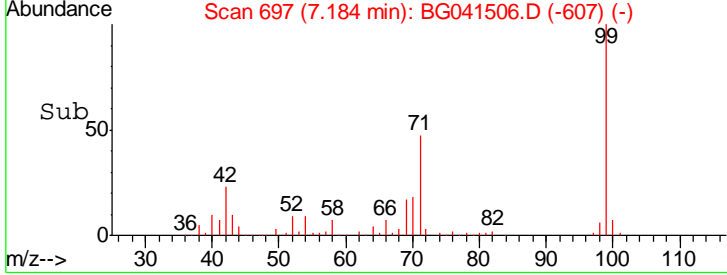
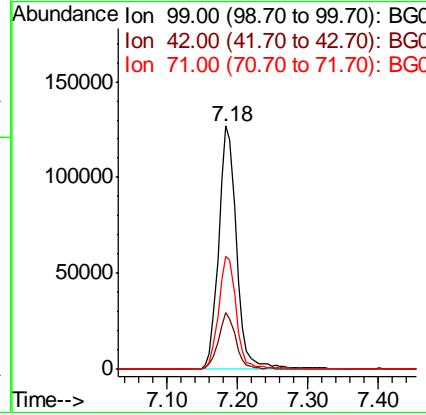
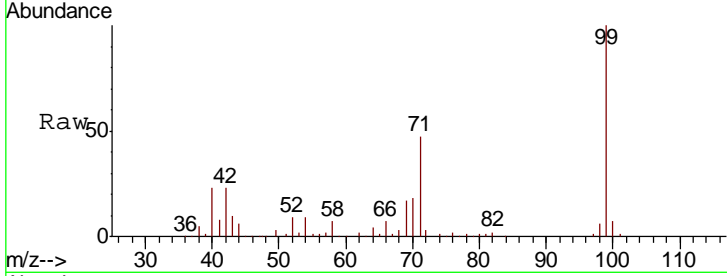




#7
 Phenol-d6
 Concen: 95.840 ng
 RT: 7.18 min Scan# 697
 Delta R.T. -0.00 min
 Lab File: BG041506.D
 Acq: 28 Jun 2019 3:50

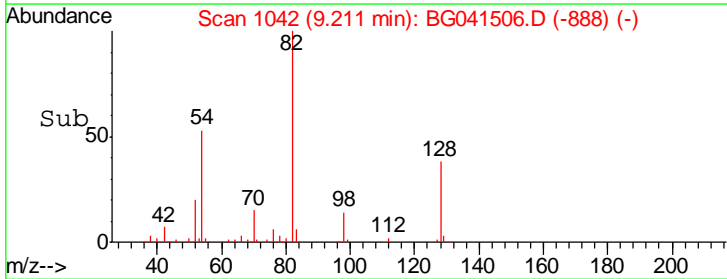
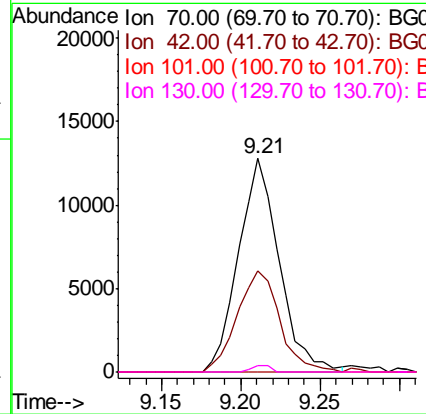
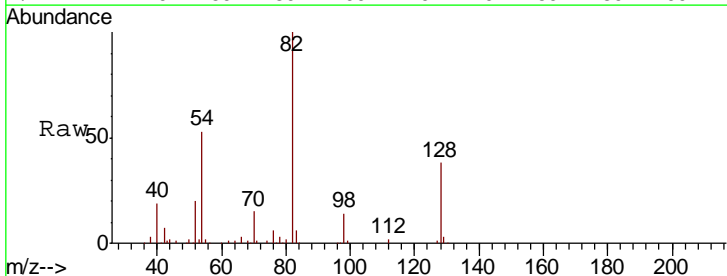
Instrument :
 BNA_G
 ClientSampled :
 M-8

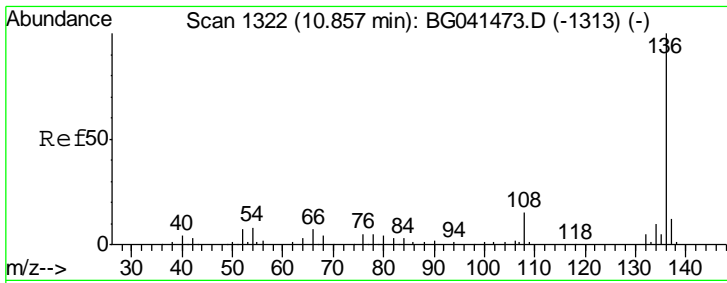
Tgt Ion	Resp	Lower	Upper
99	224998		
42	23.1	19.0	28.6
71	46.6	37.4	56.2



#19
 n-Nitroso-di-n-propylamine
 Concen: 12.980 ng
 RT: 9.21 min Scan# 1042
 Delta R.T. 0.37 min
 Lab File: BG041506.D
 Acq: 28 Jun 2019 3:50

Tgt Ion	Resp	Lower	Upper
70	22729		
42	47.3	52.6	78.8#
101	0.0	8.6	13.0#
130	3.1	16.6	25.0#



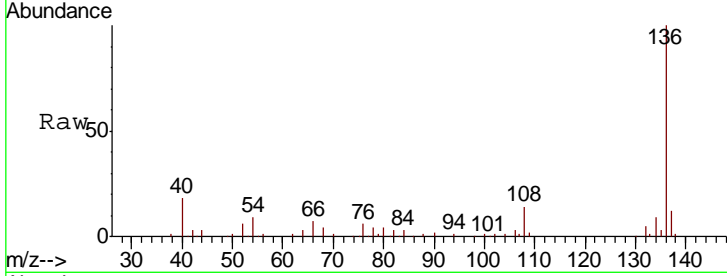


#21
 Naphthalene-d8
 Concen: 20.000 ng
 RT: 10.85 min Scan# 1321
 Delta R.T. -0.01 min
 Lab File: BG041506.D
 Acq: 28 Jun 2019 3:50

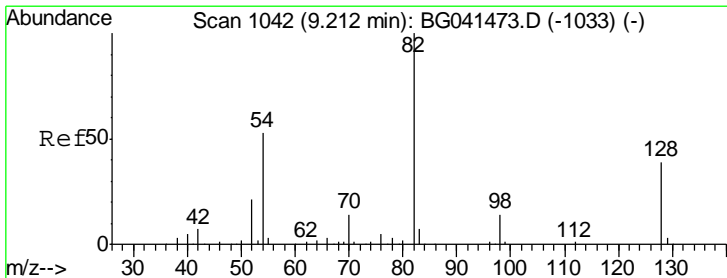
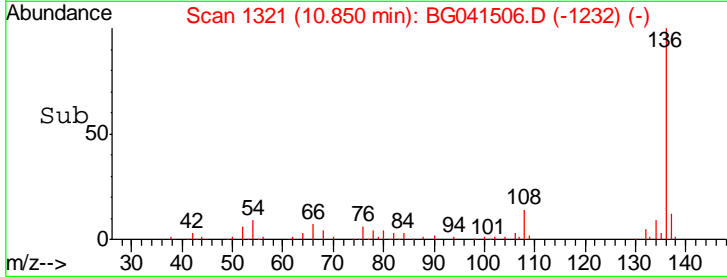
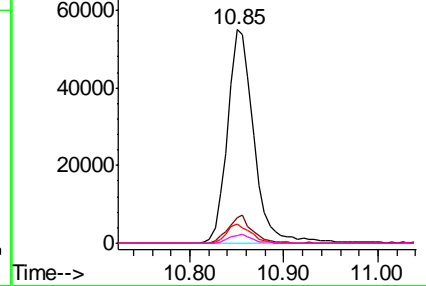
Instrument :
 BNA_G
 ClientSampled :
 M-8

Tgt Ion: 136 Resp: 107280

Ion	Ratio	Lower	Upper
136	100		
137	11.8	9.3	13.9
54	9.2	7.1	10.7
68	3.8	3.3	4.9



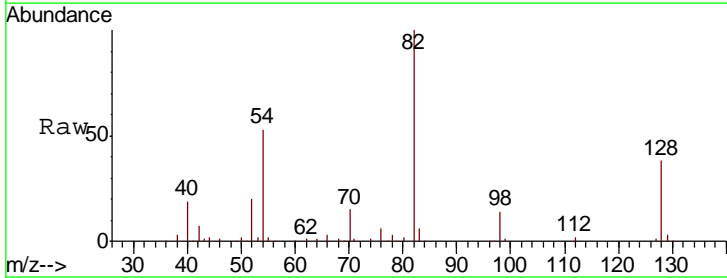
Abundance Ion 136.00 (135.70 to 136.70): E
 Ion 137.00 (136.70 to 137.70): E
 Ion 54.00 (53.70 to 54.70): BGC
 Ion 68.00 (67.70 to 68.70): BGC



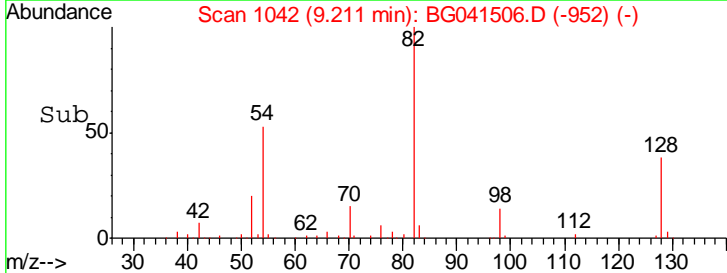
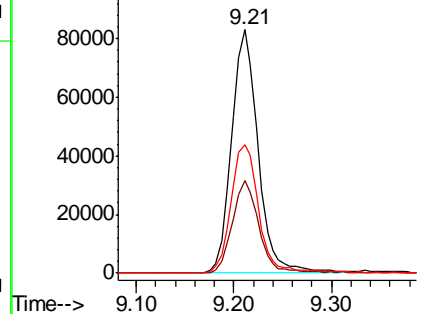
#23
 Nitrobenzene-d5
 Concen: 60.893 ng
 RT: 9.21 min Scan# 1042
 Delta R.T. -0.00 min
 Lab File: BG041506.D
 Acq: 28 Jun 2019 3:50

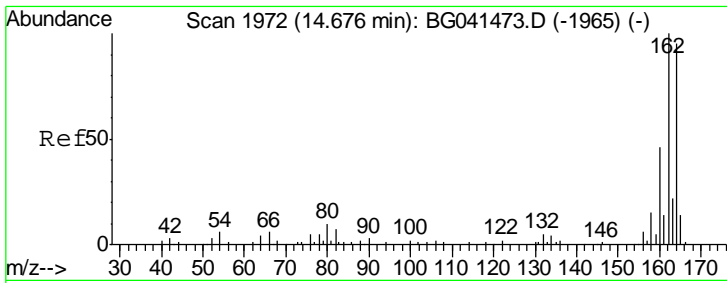
Tgt Ion: 82 Resp: 156632

Ion	Ratio	Lower	Upper
82	100		
128	37.9	30.9	46.3
54	53.0	42.2	63.2



Abundance Ion 82.00 (81.70 to 82.70): BGC
 Ion 128.00 (127.70 to 128.70): E
 Ion 54.00 (53.70 to 54.70): BGC

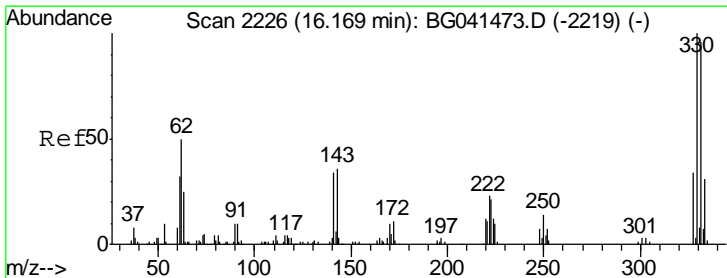
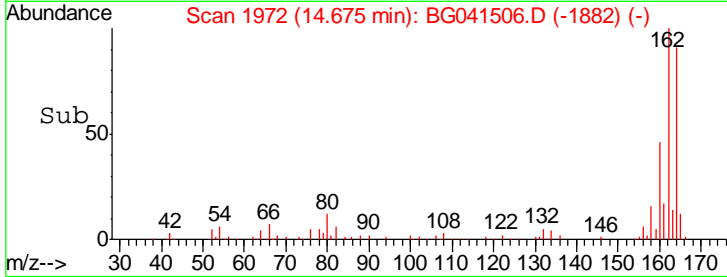
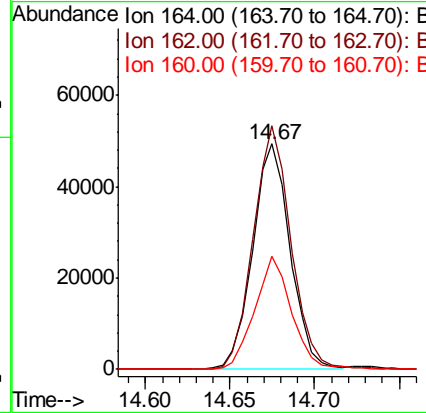
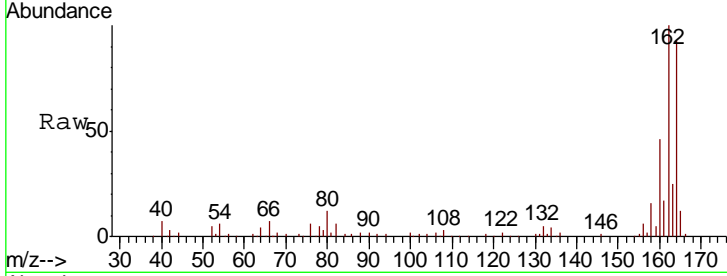




#39
 Acenaphthene-d10
 Concen: 20.000 ng
 RT: 14.67 min Scan# 1972
 Delta R.T. -0.00 min
 Lab File: BG041506.D
 Acq: 28 Jun 2019 3:50

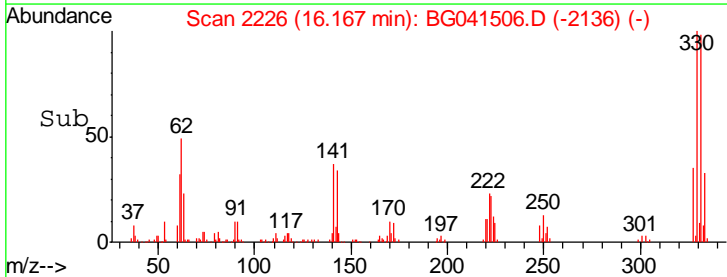
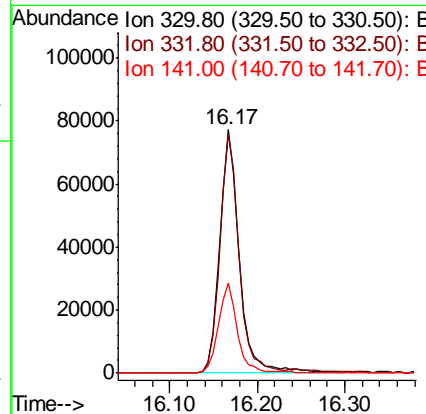
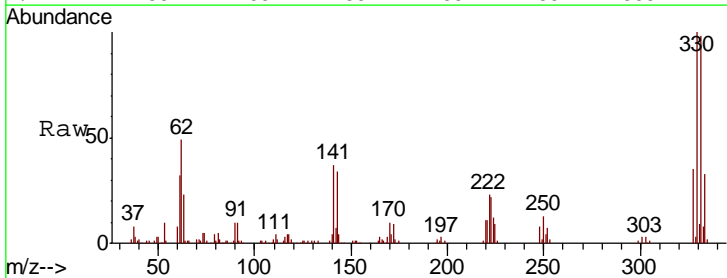
Instrument :
 BNA_G
 ClientSampled :
 M-8

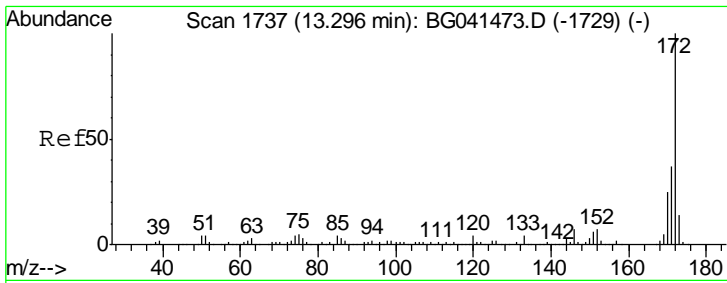
Tgt Ion	Resp	Lower	Upper
164	100		
162	108.1	84.4	126.6
160	50.2	38.8	58.2



#42
 2,4,6-Tribromophenol
 Concen: 92.735 ng
 RT: 16.17 min Scan# 2226
 Delta R.T. -0.00 min
 Lab File: BG041506.D
 Acq: 28 Jun 2019 3:50

Tgt Ion	Resp	Lower	Upper
330	100		
332	95.3	75.5	113.3
141	35.8	27.8	41.6



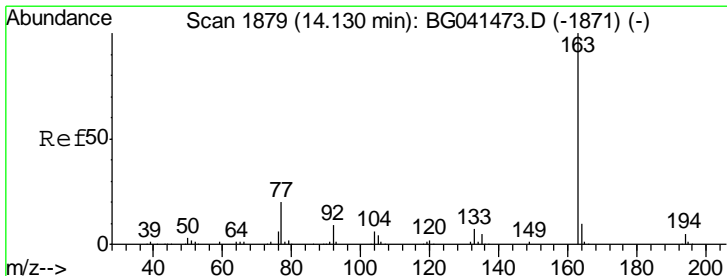
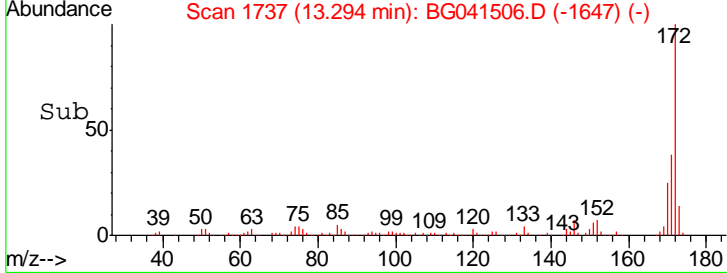
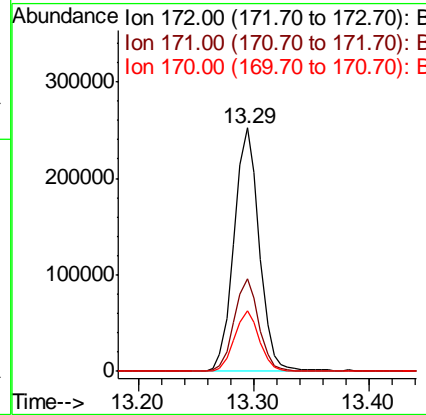
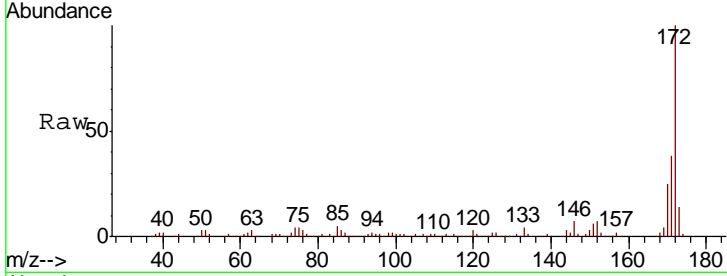


#45
 2-Fluorobiphenyl
 Concen: 64.426 ng
 RT: 13.29 min Scan# 1737
 Delta R.T. -0.00 min
 Lab File: BG041506.D
 Acq: 28 Jun 2019 3:50

Instrument :
 BNA_G
 ClientSampled :
 M-8

Tgt Ion:172 Resp: 382701

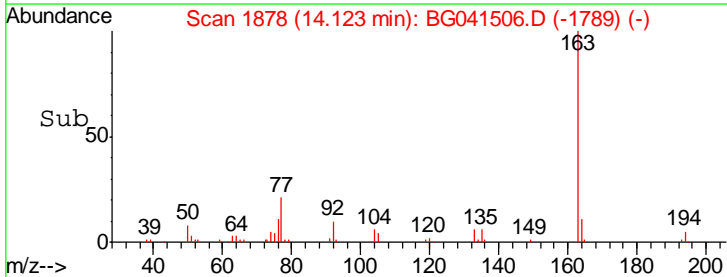
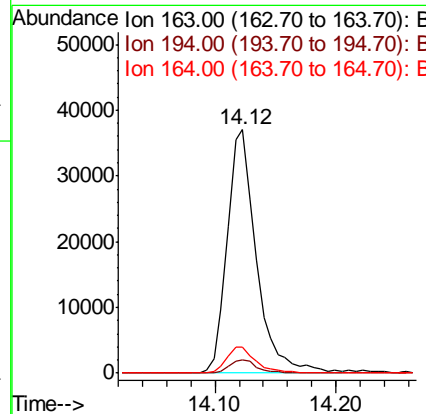
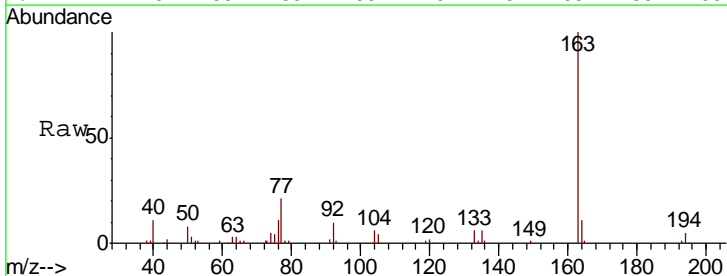
Ion	Ratio	Lower	Upper
172	100		
171	38.1	29.6	44.4
170	25.1	20.0	30.0

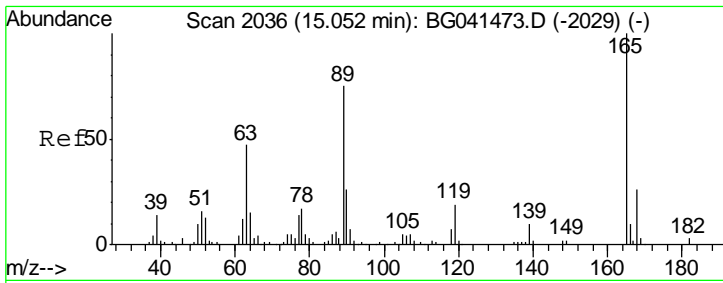


#50
 Dimethylphthalate
 Concen: 8.926 ng
 RT: 14.12 min Scan# 1878
 Delta R.T. -0.01 min
 Lab File: BG041506.D
 Acq: 28 Jun 2019 3:50

Tgt Ion:163 Resp: 61920

Ion	Ratio	Lower	Upper
163	100		
194	5.4	3.7	5.5
164	10.7	7.8	11.6

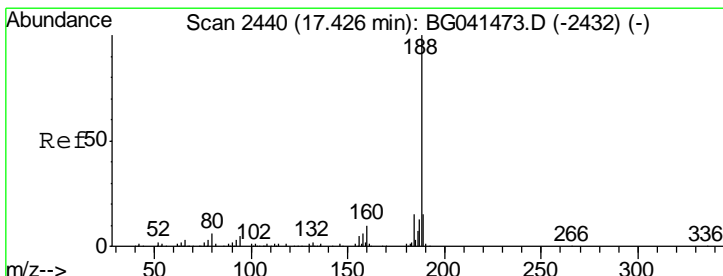
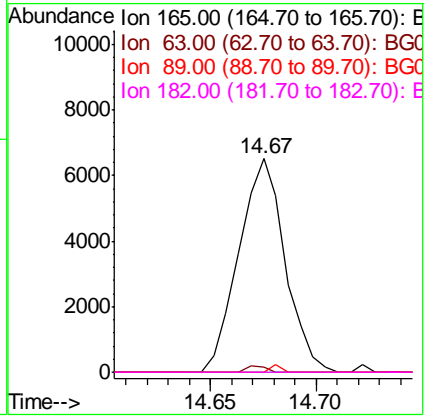
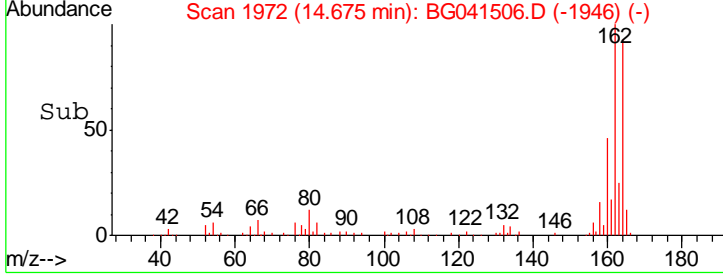
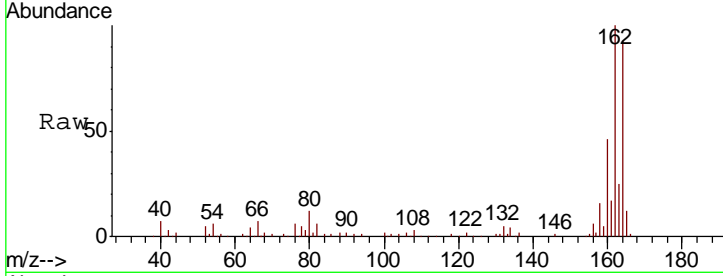




#57
 2,4-Dinitrotoluene
 Concen: 4.631 ng
 RT: 14.67 min Scan# 1972
 Delta R.T. -0.38 min
 Lab File: BG041506.D
 Acq: 28 Jun 2019 3:50

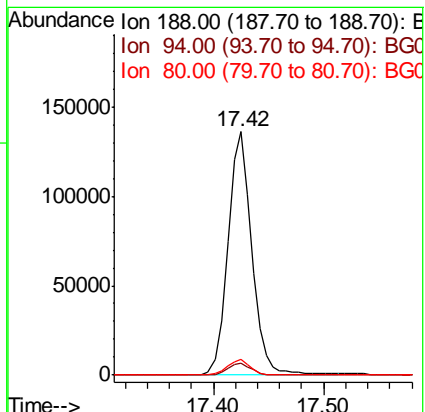
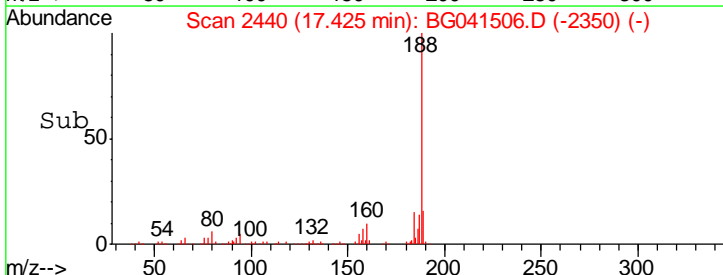
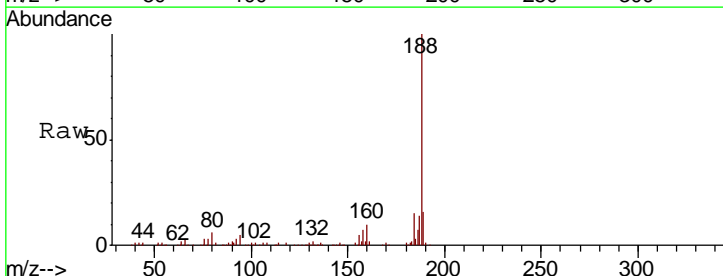
Instrument :
 BNA_G
 ClientSampled :
 M-8

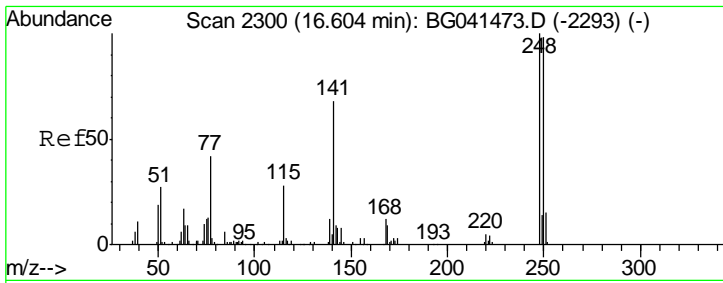
Tgt Ion	Resp	Lower	Upper
165	100		
63	2.4	38.8	58.2#
89	0.0	60.1	90.1#
182	0.0	2.2	3.2#



#64
 Phenanthrene-d10
 Concen: 20.000 ng
 RT: 17.42 min Scan# 2440
 Delta R.T. -0.00 min
 Lab File: BG041506.D
 Acq: 28 Jun 2019 3:50

Tgt Ion	Resp	Lower	Upper
188	100		
94	4.7	3.8	5.8
80	6.4	4.8	7.2

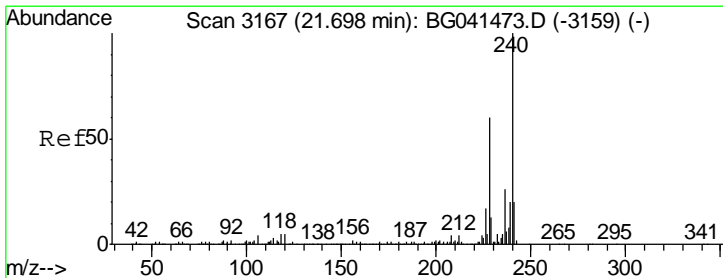
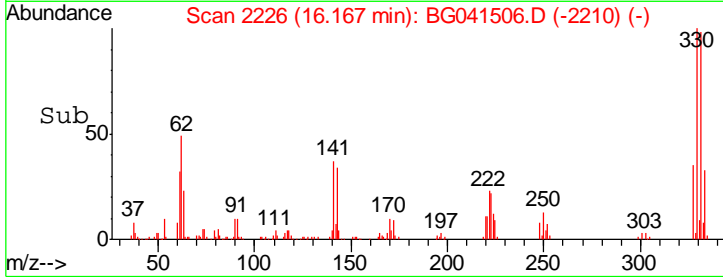
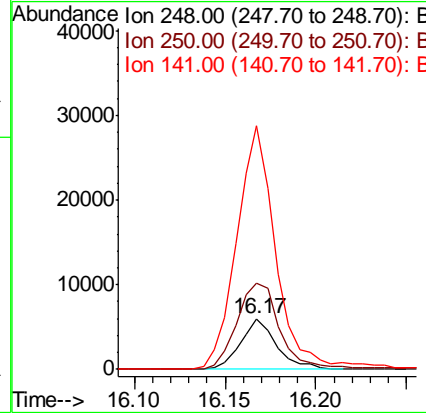
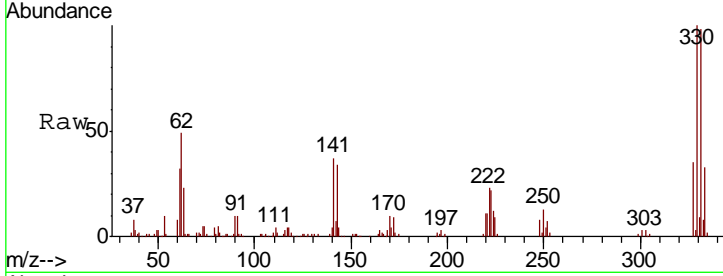




#67
 4-Bromophenyl-phenylether
 Concen: 2.901 ng
 RT: 16.17 min Scan# 2226
 Delta R.T. -0.44 min
 Lab File: BG041506.D
 Acq: 28 Jun 2019 3:50

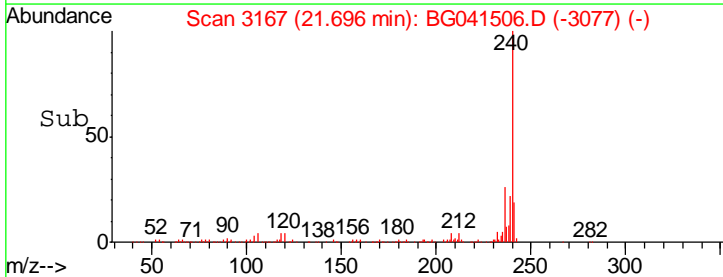
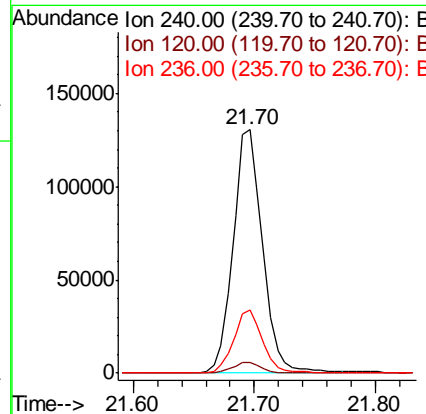
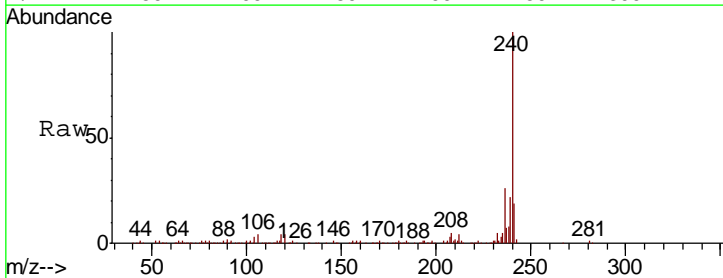
Instrument :
 BNA_G
 ClientSampled :
 M-8

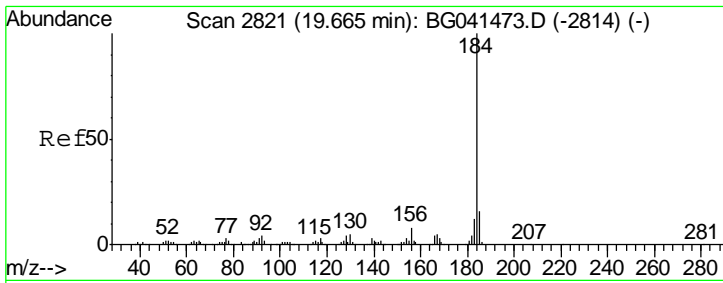
Tgt Ion	Resp	Lower	Upper
248	100		
250	171.6	78.1	117.1#
141	483.4	54.1	81.1#



#76
 Chrysene-d12
 Concen: 20.000 ng
 RT: 21.70 min Scan# 3167
 Delta R.T. -0.00 min
 Lab File: BG041506.D
 Acq: 28 Jun 2019 3:50

Tgt Ion	Resp	Lower	Upper
240	100		
120	4.2	3.7	5.5
236	25.8	20.8	31.2



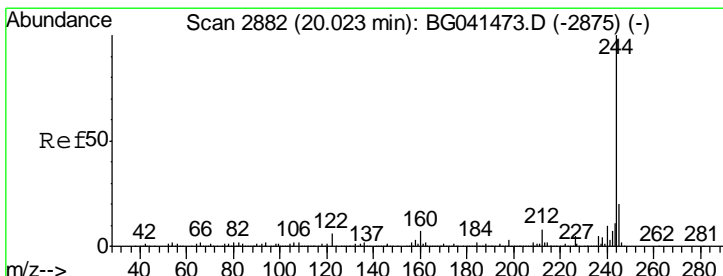
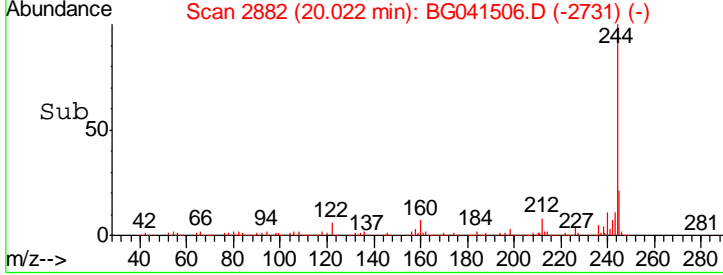
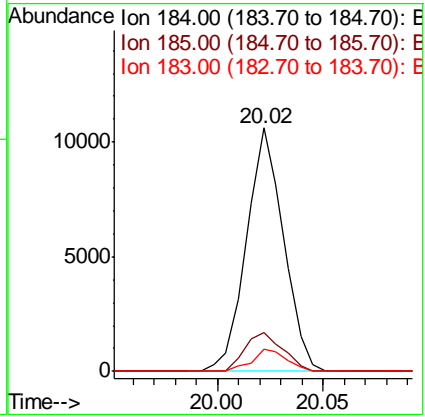
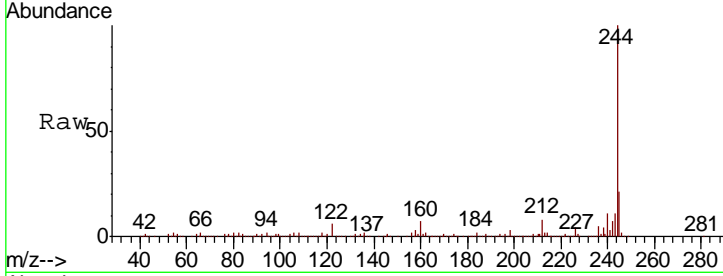


#77
 Benzidine
 Concen: 2.640 ng
 RT: 20.02 min Scan# 2882
 Delta R.T. 0.36 min
 Lab File: BG041506.D
 Acq: 28 Jun 2019 3:50

Instrument :
 BNA_G
 ClientSampled :
 M-8

Tgt Ion:184 Resp: 12938

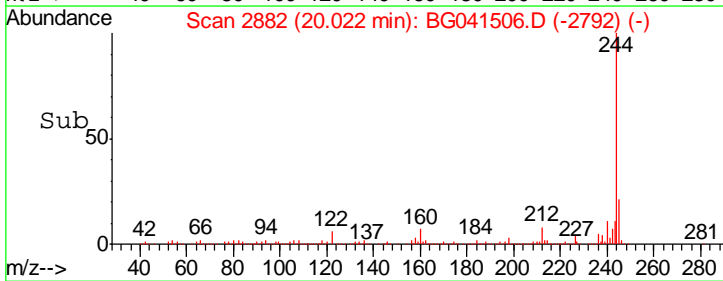
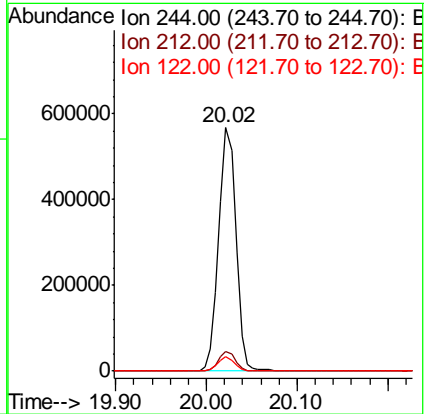
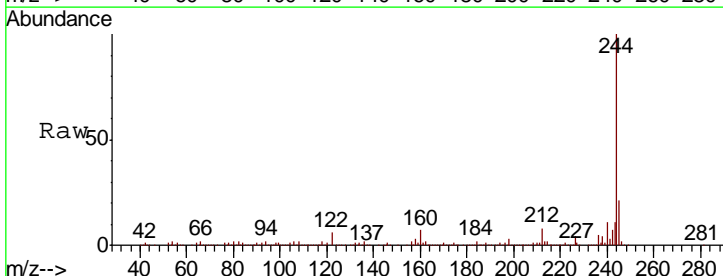
Ion	Ratio	Lower	Upper
184	100		
185	15.7	12.7	19.1
183	9.2	9.4	14.2#

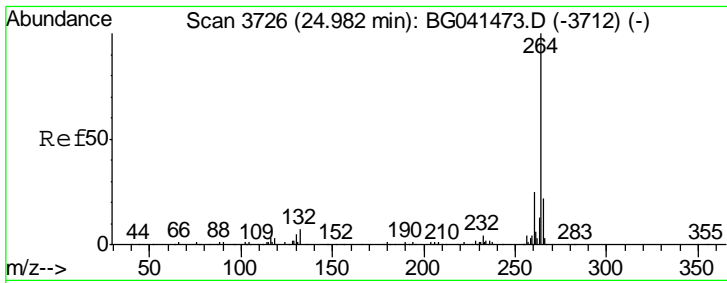


#79
 Terphenyl-d14
 Concen: 72.086 ng
 RT: 20.02 min Scan# 2882
 Delta R.T. -0.00 min
 Lab File: BG041506.D
 Acq: 28 Jun 2019 3:50

Tgt Ion:244 Resp: 749189

Ion	Ratio	Lower	Upper
244	100		
212	7.8	6.2	9.4
122	5.8	4.8	7.2





#87
 Perylene-d12
 Concen: 20.000 ng
 RT: 24.98 min Scan# 3726
 Delta R.T. -0.00 min
 Lab File: BG041506.D
 Acq: 28 Jun 2019 3:50

Instrument :
 BNA_G
 ClientSampled :
 M-8

Tgt Ion: 264 Resp: 232890

Ion	Ratio	Lower	Upper
264	100		
260	23.3	19.7	29.5
265	20.8	17.4	26.2

