

Data Path : Z:\svoasrv\HPCHEM1\BNA_G\Data\BG062822\
 Data File : BG054131.D
 Acq On : 29 Jun 2022 00:05
 Operator : CG/JU
 Sample : N3494-21DL 20X
 Misc :
 ALS Vial : 12 Sample Multiplier: 1

Instrument :
 BNA_G
 ClientSampleId :
 SP-EXC-1-3DL

Quant Time: Jun 29 02:36:45 2022
 Quant Method : Z:\svoasrv\HPCHEM1\BNA_G\Methods\8270-BG061322.M
 Quant Title : ASP BNA STANDARDS FOR 5 POINT CALIBRATION
 QLast Update : Mon Jun 27 00:27:54 2022
 Response via : Initial Calibration

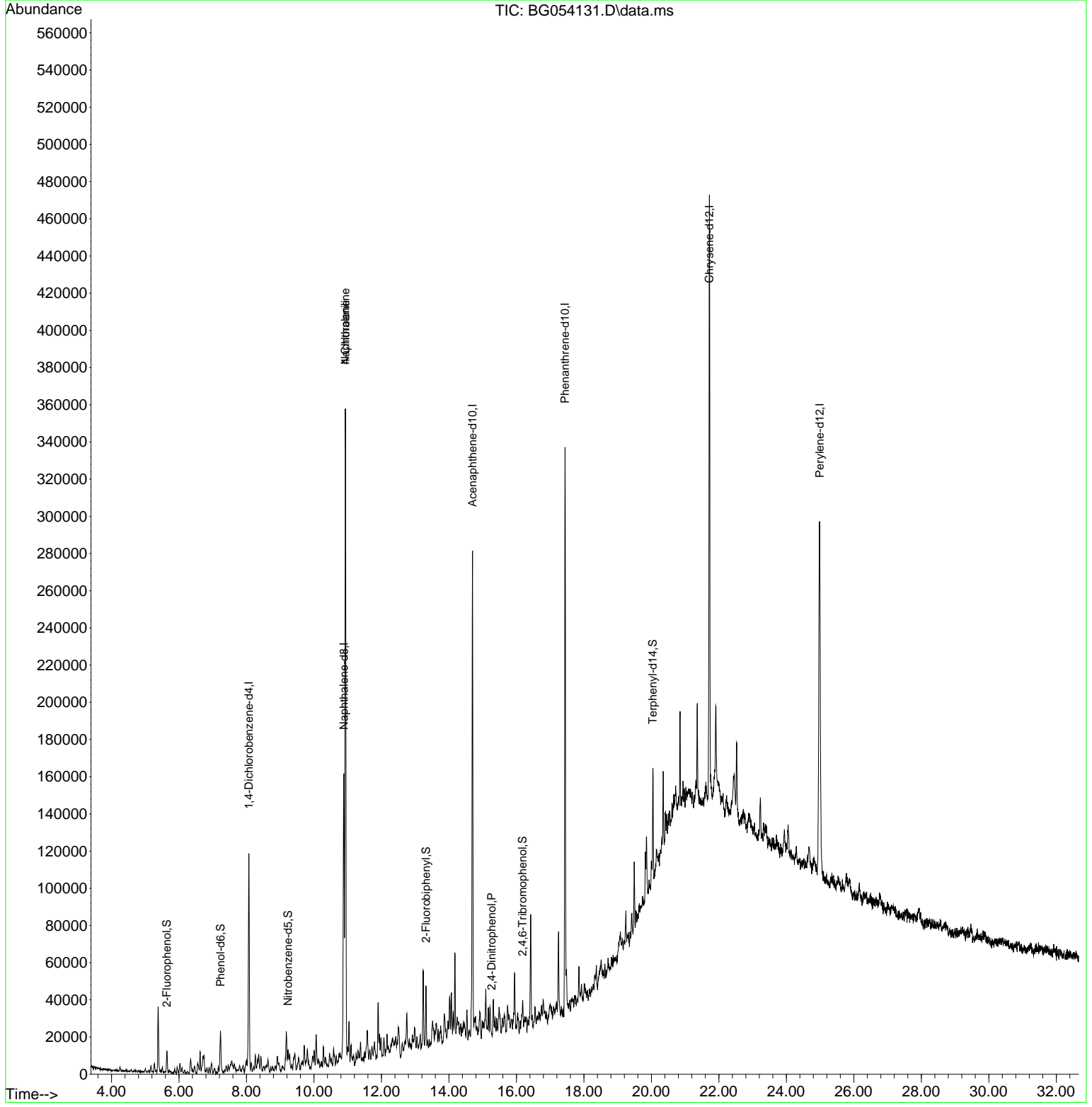
Compound	R.T.	QIon	Response	Conc	Units	Dev(Min)
Internal Standards						
1) 1,4-Dichlorobenzene-d4	8.071	152	35926	20.000	ng	0.00
21) Naphthalene-d8	10.885	136	142124	20.000	ng	0.00
39) Acenaphthene-d10	14.698	164	96214	20.000	ng	0.00
64) Phenanthrene-d10	17.442	188	212469	20.000	ng	0.00
76) Chrysene-d12	21.719	240	220449	20.000	ng	0.00
86) Perylene-d12	24.986	264	230340	20.000	ng	0.02
System Monitoring Compounds						
5) 2-Fluorophenol	5.638	112	6448	3.431	ng	0.00
7) Phenol-d6	7.230	99	9792	3.841	ng	0.00
23) Nitrobenzene-d5	9.234	82	7089	2.803	ng	0.00
42) 2,4,6-Tribromophenol	16.185	330	3127	2.023	ng	0.00
45) 2-Fluorobiphenyl	13.323	172	18483	2.793	ng	0.00
79) Terphenyl-d14	20.045	244	32354	2.956	ng	0.00
Target Compounds						
31) Naphthalene	10.932	128	307242	42.823	ng	99
33) 4-Chloroaniline	10.932	127	42830	14.389	ng	# 33
54) 2,4-Dinitrophenol	15.268	184	69	7.128	ng	# 11

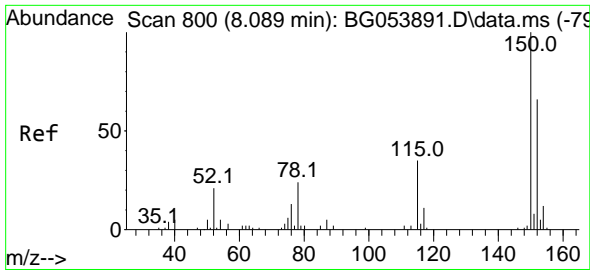
(#) = qualifier out of range (m) = manual integration (+) = signals summed

Data Path : Z:\svoasrv\HPCHEM1\BNA_G\Data\BG062822\
 Data File : BG054131.D
 Acq On : 29 Jun 2022 00:05
 Operator : CG/JU
 Sample : N3494-21DL 20X
 Misc :
 ALS Vial : 12 Sample Multiplier: 1

Instrument :
 BNA_G
 ClientSampleId :
 SP-EXC-1-3DL

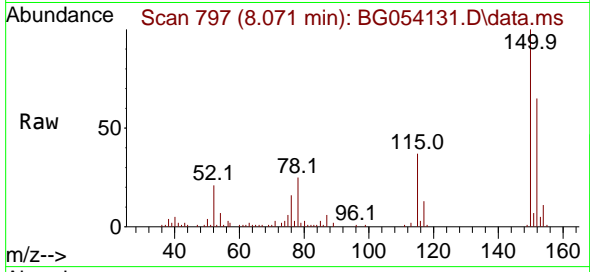
Quant Time: Jun 29 02:36:45 2022
 Quant Method : Z:\svoasrv\HPCHEM1\BNA_G\Methods\8270-BG061322.M
 Quant Title : ASP BNA STANDARDS FOR 5 POINT CALIBRATION
 QLast Update : Mon Jun 27 00:27:54 2022
 Response via : Initial Calibration



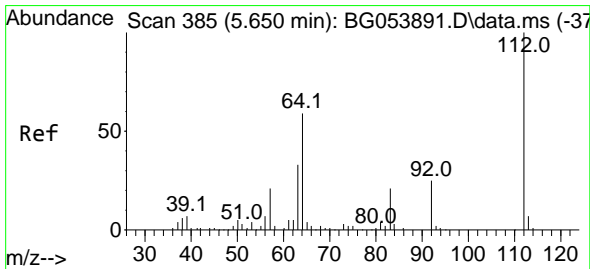
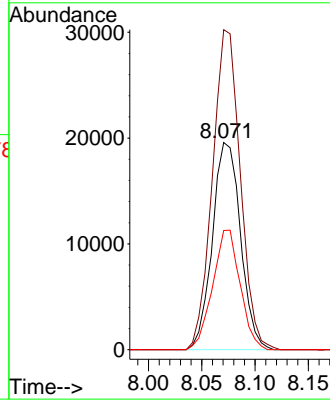
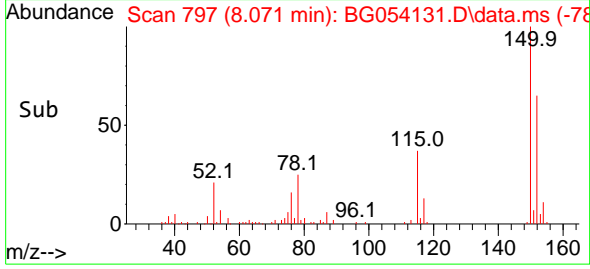


#1
 1,4-Dichlorobenzene-d4
 Concen: 20.000 ng
 RT: 8.071 min Scan# 79
 Delta R.T. 0.001 min
 Lab File: BG054131.D
 Acq: 29 Jun 2022 00:05

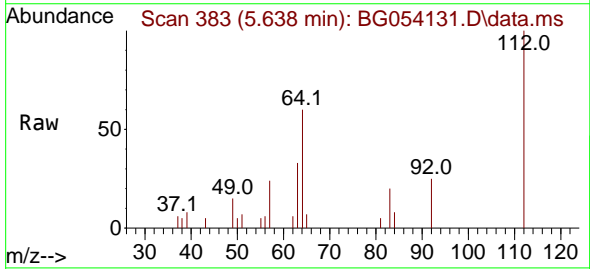
Instrument :
 BNA_G
 ClientSampleId :
 SP-EXC-1-3DL



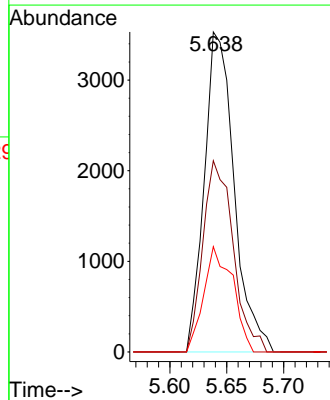
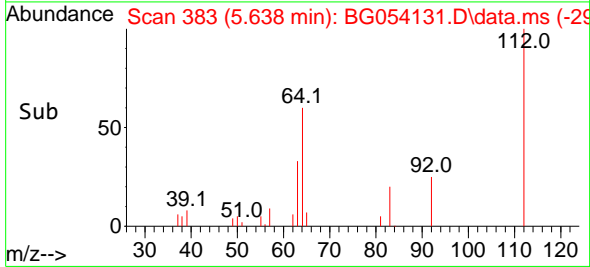
Tgt Ion:152 Resp: 35926
 Ion Ratio Lower Upper
 152 100
 150 154.5 131.6 197.4
 115 57.5 50.9 76.3

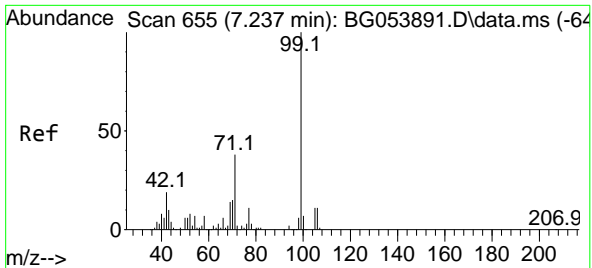


#5
 2-Fluorophenol
 Concen: 3.431 ng
 RT: 5.638 min Scan# 383
 Delta R.T. 0.000 min
 Lab File: BG054131.D
 Acq: 29 Jun 2022 00:05



Tgt Ion:112 Resp: 6448
 Ion Ratio Lower Upper
 112 100
 64 59.7 55.1 82.7
 63 32.9 30.4 45.6

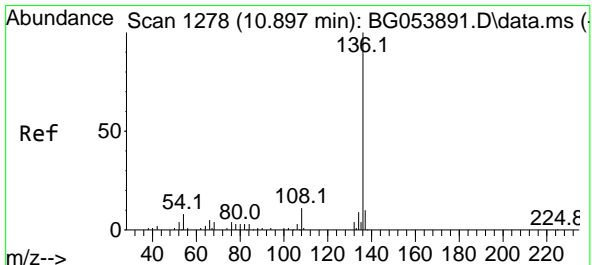
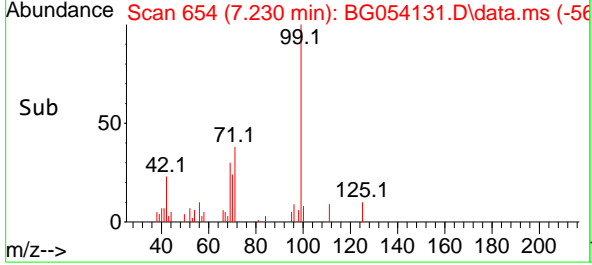
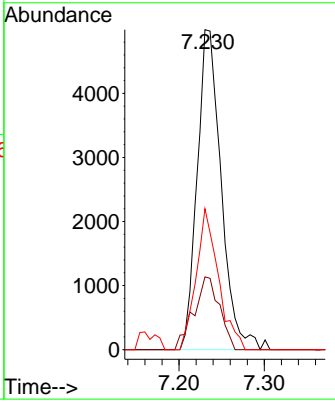
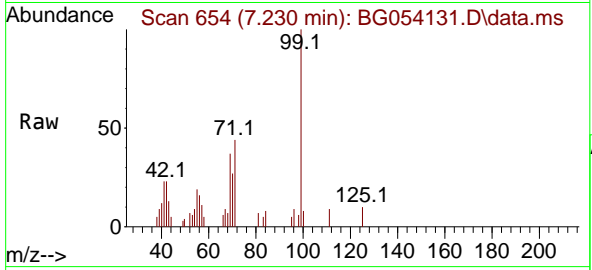




#7
 Phenol-d6
 Concen: 3.841 ng
 RT: 7.230 min Scan# 61
 Delta R.T. 0.000 min
 Lab File: BG054131.D
 Acq: 29 Jun 2022 00:05

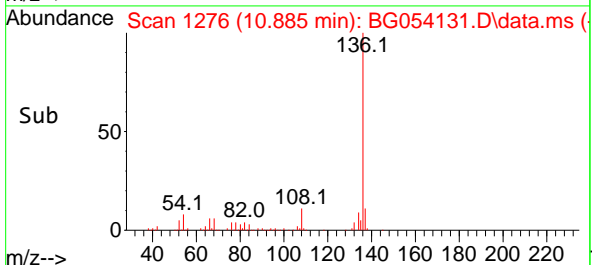
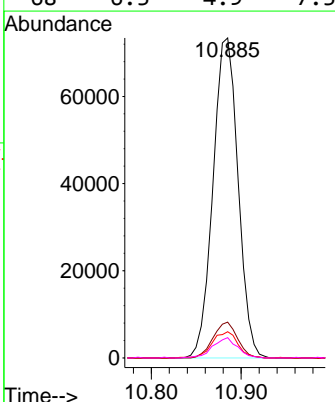
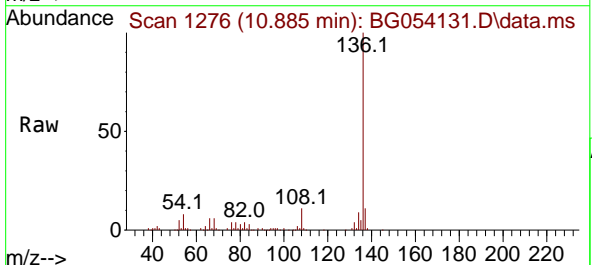
Instrument : BNA_G
 ClientSampleId : SP-EXC-1-3DL

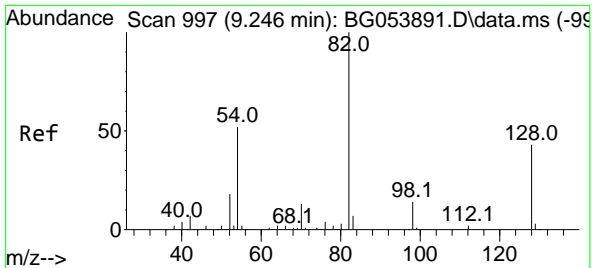
Tgt Ion	Resp	Ion Ratio	Lower	Upper
99	9792	100		
42		22.7	17.0	25.6
71		44.1	33.8	50.8



#21
 Naphthalene-d8
 Concen: 20.000 ng
 RT: 10.885 min Scan# 1276
 Delta R.T. 0.006 min
 Lab File: BG054131.D
 Acq: 29 Jun 2022 00:05

Tgt Ion	Resp	Ion Ratio	Lower	Upper
136	142124	100		
137		11.2	8.5	12.7
54		8.2	7.4	11.2
68		6.3	4.9	7.3





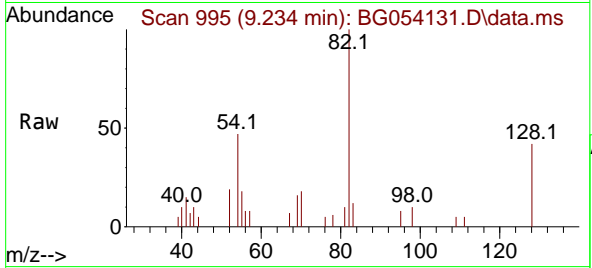
#23
 Nitrobenzene-d5
 Concen: 2.803 ng
 RT: 9.234 min Scan# 91
 Delta R.T. 0.000 min
 Lab File: BG054131.D
 Acq: 29 Jun 2022 00:05

Instrument :

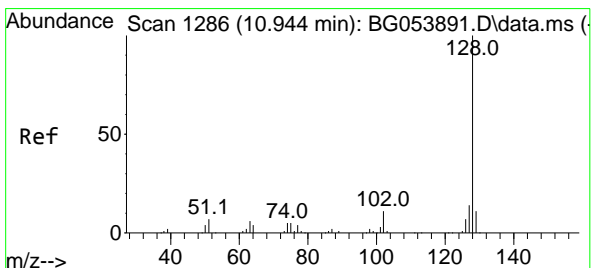
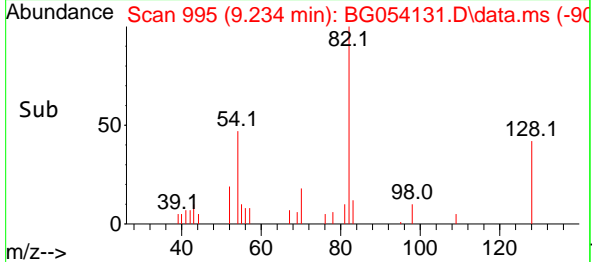
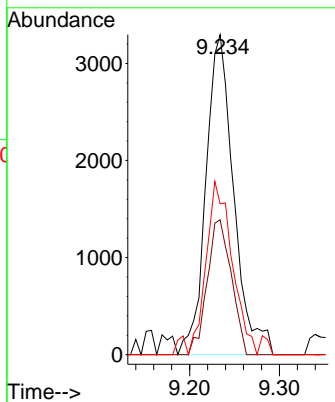
BNA_G

ClientSampleId :

SP-EXC-1-3DL

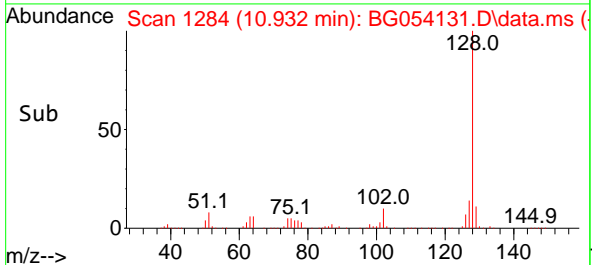
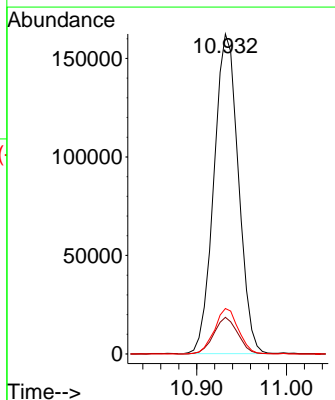
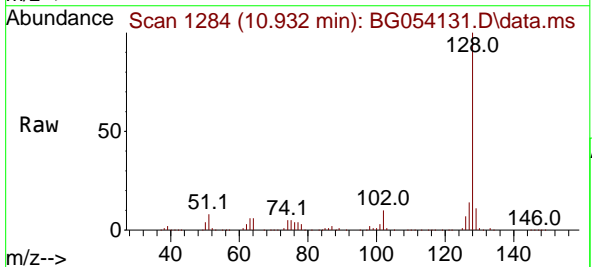


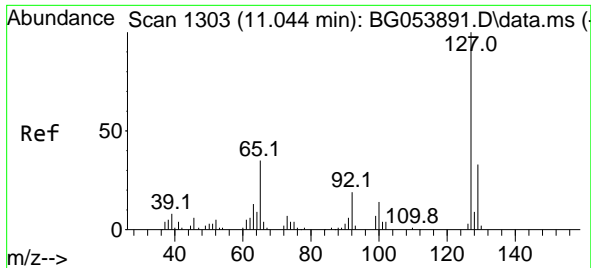
Tgt Ion: 82 Resp: 7089
 Ion Ratio Lower Upper
 82 100
 128 42.1 27.9 41.9#
 54 47.1 41.2 61.8



#31
 Naphthalene
 Concen: 42.823 ng
 RT: 10.932 min Scan# 1284
 Delta R.T. 0.000 min
 Lab File: BG054131.D
 Acq: 29 Jun 2022 00:05

Tgt Ion: 128 Resp: 307242
 Ion Ratio Lower Upper
 128 100
 129 11.5 9.0 13.6
 127 14.2 11.1 16.7

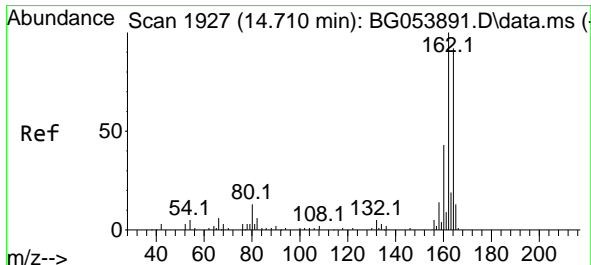
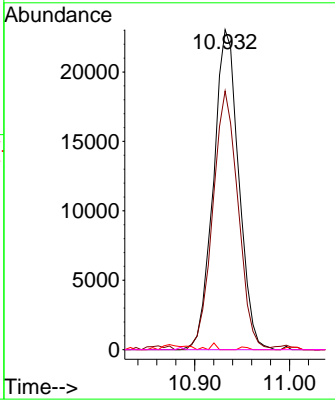
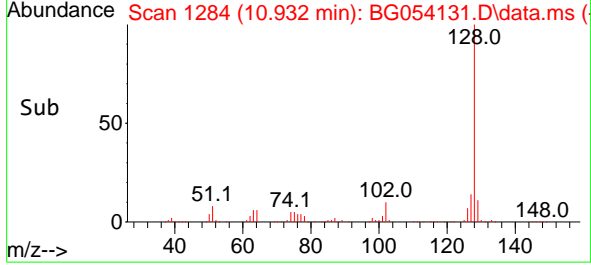
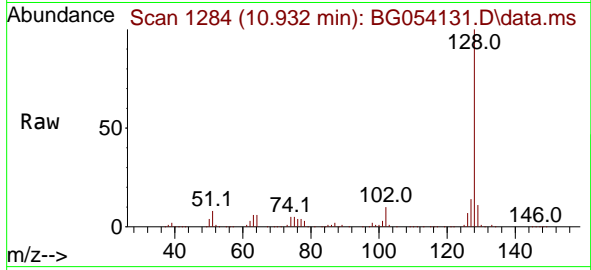




#33
 4-Chloroaniline
 Concen: 14.389 ng
 RT: 10.932 min Scan# 11
 Delta R.T. -0.100 min
 Lab File: BG054131.D
 Acq: 29 Jun 2022 00:05

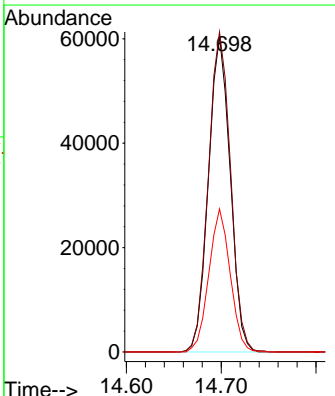
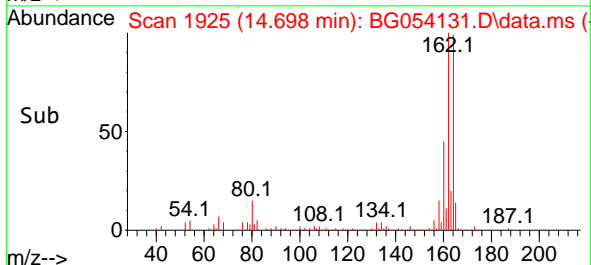
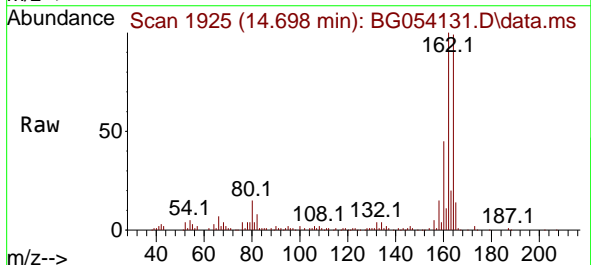
Instrument : BNA_G
 ClientSampleId : SP-EXC-1-3DL

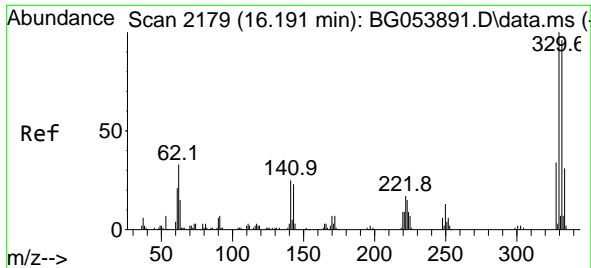
Tgt Ion	Resp	Lower	Upper
127	42830		
129	80.8	26.3	39.5#
65	0.0	31.1	46.7#
92	0.0	19.1	28.7#



#39
 Acenaphthene-d10
 Concen: 20.000 ng
 RT: 14.698 min Scan# 1925
 Delta R.T. 0.000 min
 Lab File: BG054131.D
 Acq: 29 Jun 2022 00:05

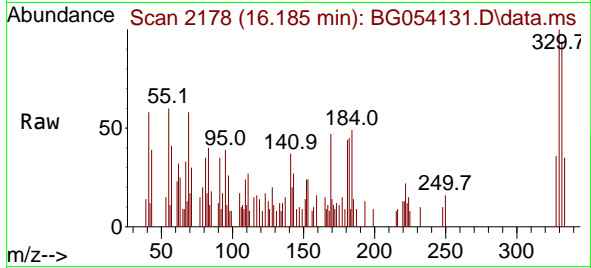
Tgt Ion	Resp	Lower	Upper
164	96214		
162	101.2	82.3	123.5
160	45.3	34.2	51.2



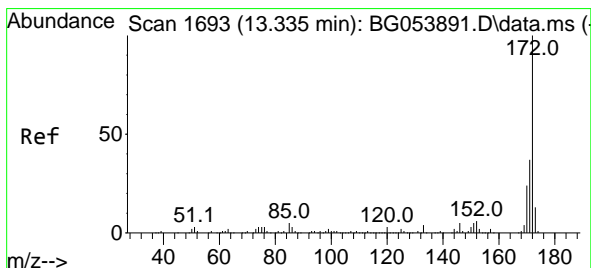
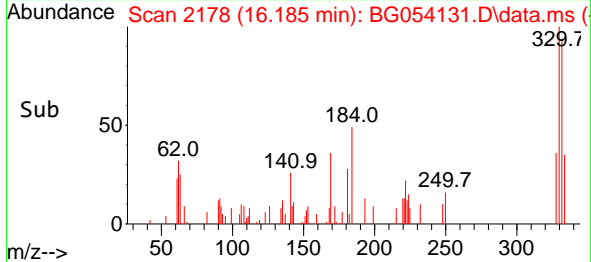
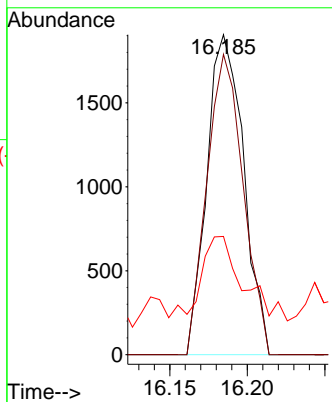


#42
 2,4,6-Tribromophenol
 Concen: 2.023 ng
 RT: 16.185 min Scan# 2178
 Delta R.T. 0.000 min
 Lab File: BG054131.D
 Acq: 29 Jun 2022 00:05

Instrument :
 BNA_G
 ClientSampleId :
 SP-EXC-1-3DL

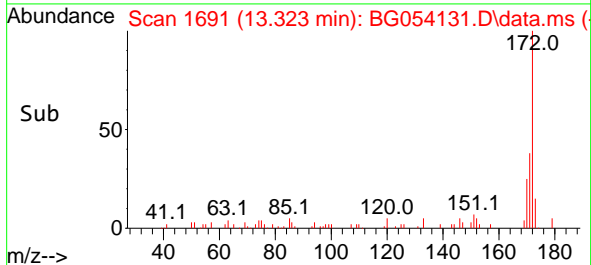
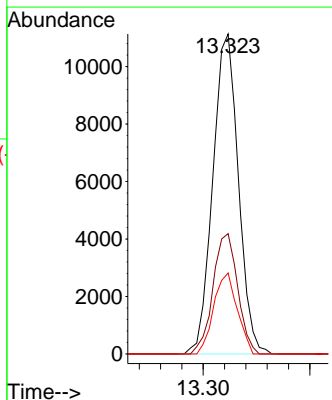
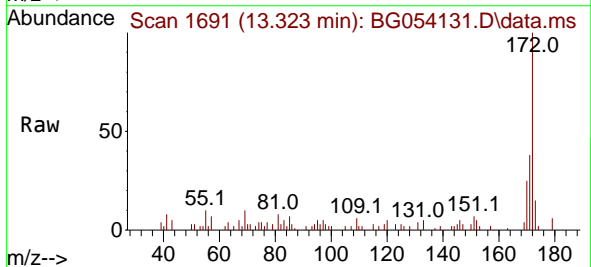


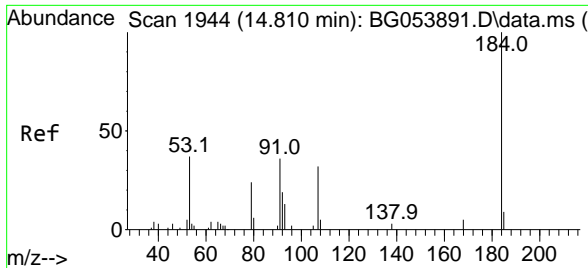
Tgt Ion:330 Resp: 3127
 Ion Ratio Lower Upper
 330 100
 332 93.1 76.0 114.0
 141 38.7 27.1 40.7



#45
 2-Fluorobiphenyl
 Concen: 2.793 ng
 RT: 13.323 min Scan# 1691
 Delta R.T. 0.000 min
 Lab File: BG054131.D
 Acq: 29 Jun 2022 00:05

Tgt Ion:172 Resp: 18483
 Ion Ratio Lower Upper
 172 100
 171 37.6 28.5 42.7
 170 25.3 18.9 28.3

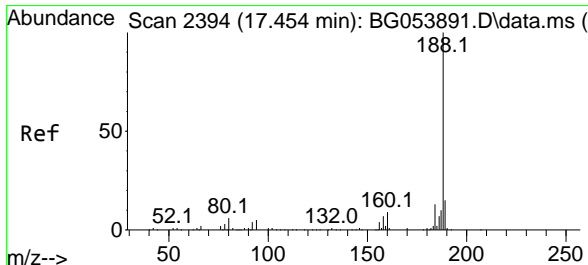
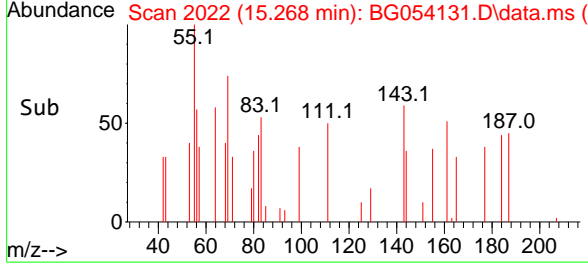
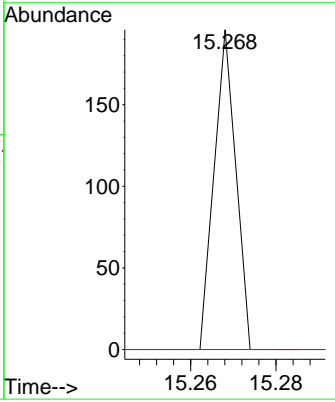
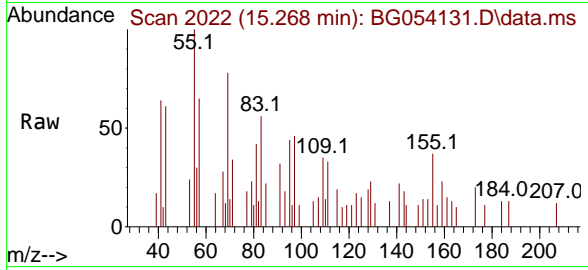




#54
 2,4-Dinitrophenol
 Concen: 7.128 ng
 RT: 15.268 min Scan# 20
 Delta R.T. 0.464 min
 Lab File: BG054131.D
 Acq: 29 Jun 2022 00:05

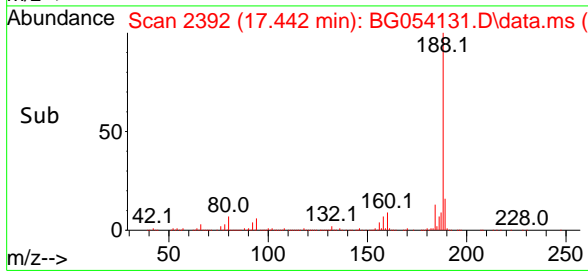
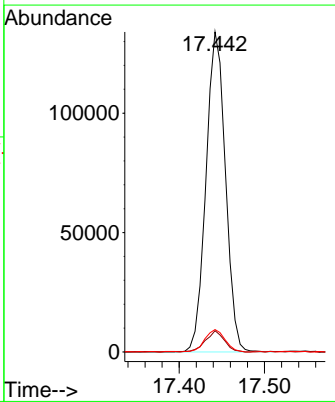
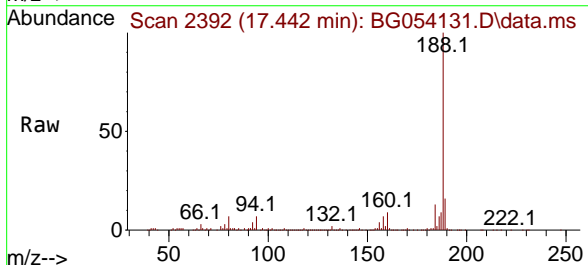
Instrument : BNA_G
 ClientSampleId : SP-EXC-1-3DL

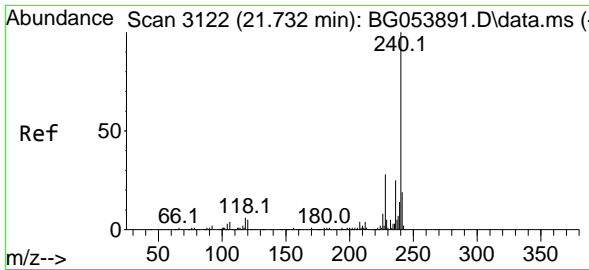
Tgt Ion	Resp	Lower	Upper
184	100		
63	0.0	61.1	91.7#
154	0.0	60.6	91.0#



#64
 Phenanthrene-d10
 Concen: 20.000 ng
 RT: 17.442 min Scan# 2392
 Delta R.T. 0.000 min
 Lab File: BG054131.D
 Acq: 29 Jun 2022 00:05

Tgt Ion	Resp	Lower	Upper
188	100		
94	6.7	5.4	8.0
80	7.0	6.8	10.2

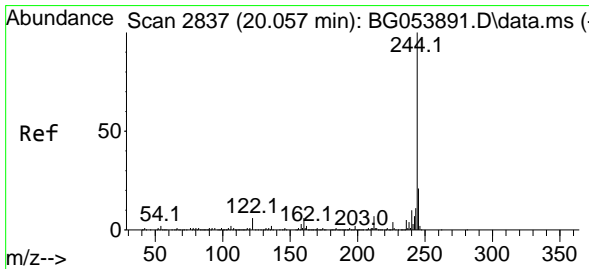
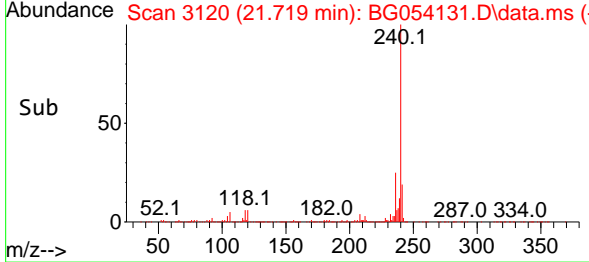
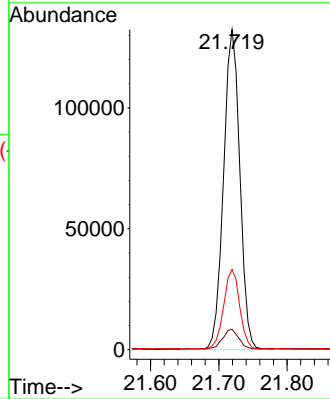
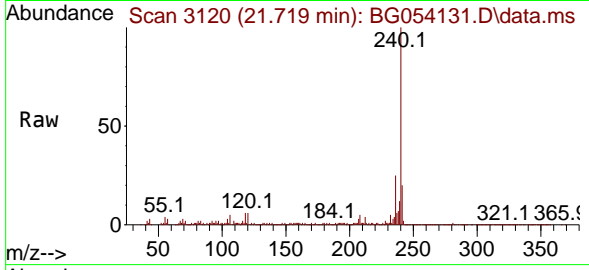




#76
 Chrysene-d12
 Concen: 20.000 ng
 RT: 21.719 min Scan# 31
 Delta R.T. 0.000 min
 Lab File: BG054131.D
 Acq: 29 Jun 2022 00:05

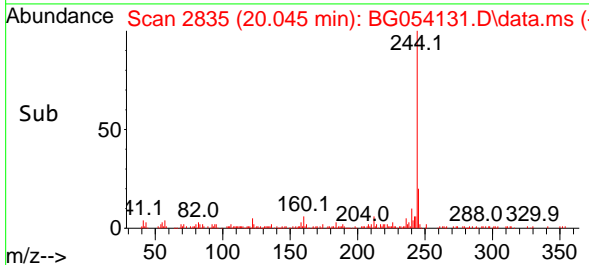
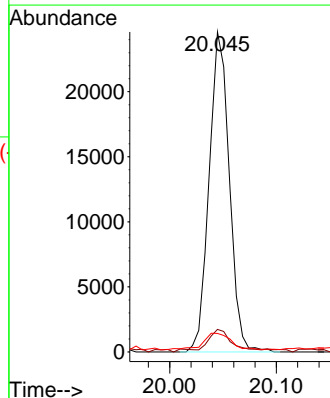
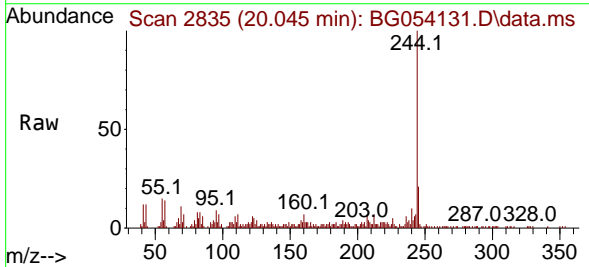
Instrument :
 BNA_G
 ClientSampleId :
 SP-EXC-1-3DL

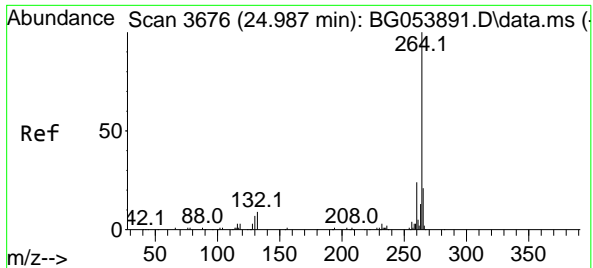
Tgt Ion:240 Resp: 220449
 Ion Ratio Lower Upper
 240 100
 120 6.4 4.6 7.0
 236 25.1 20.2 30.4



#79
 Terphenyl-d14
 Concen: 2.956 ng
 RT: 20.045 min Scan# 2835
 Delta R.T. 0.000 min
 Lab File: BG054131.D
 Acq: 29 Jun 2022 00:05

Tgt Ion:244 Resp: 32354
 Ion Ratio Lower Upper
 244 100
 212 7.0 6.5 9.7
 122 5.8 5.0 7.4





#86
 Perylene-d12
 Concen: 20.000 ng
 RT: 24.986 min Scan# 30
 Delta R.T. 0.024 min
 Lab File: BG054131.D
 Acq: 29 Jun 2022 00:05

Instrument :
 BNA_G
 ClientSampleId :
 SP-EXC-1-3DL

Tgt Ion:264 Resp: 230340

Ion	Ratio	Lower	Upper
264	100		
260	24.5	19.0	28.6
265	21.7	17.4	26.2

