

Data Path : Z:\svoasrv\HPCHEM1\BNA_G\Data\BG062822\
 Data File : BG054135.D
 Acq On : 29 Jun 2022 2:41
 Operator : CG/JU
 Sample : N3494-06 5X
 Misc :
 ALS Vial : 16 Sample Multiplier: 1

Instrument :
 BNA_G
 ClientSampleId :
 SP-EXC-1-4

Quant Time: Jun 29 03:15:27 2022
 Quant Method : Z:\svoasrv\HPCHEM1\BNA_G\Methods\8270-BG061322.M
 Quant Title : ASP BNA STANDARDS FOR 5 POINT CALIBRATION
 QLast Update : Mon Jun 27 00:27:54 2022
 Response via : Initial Calibration

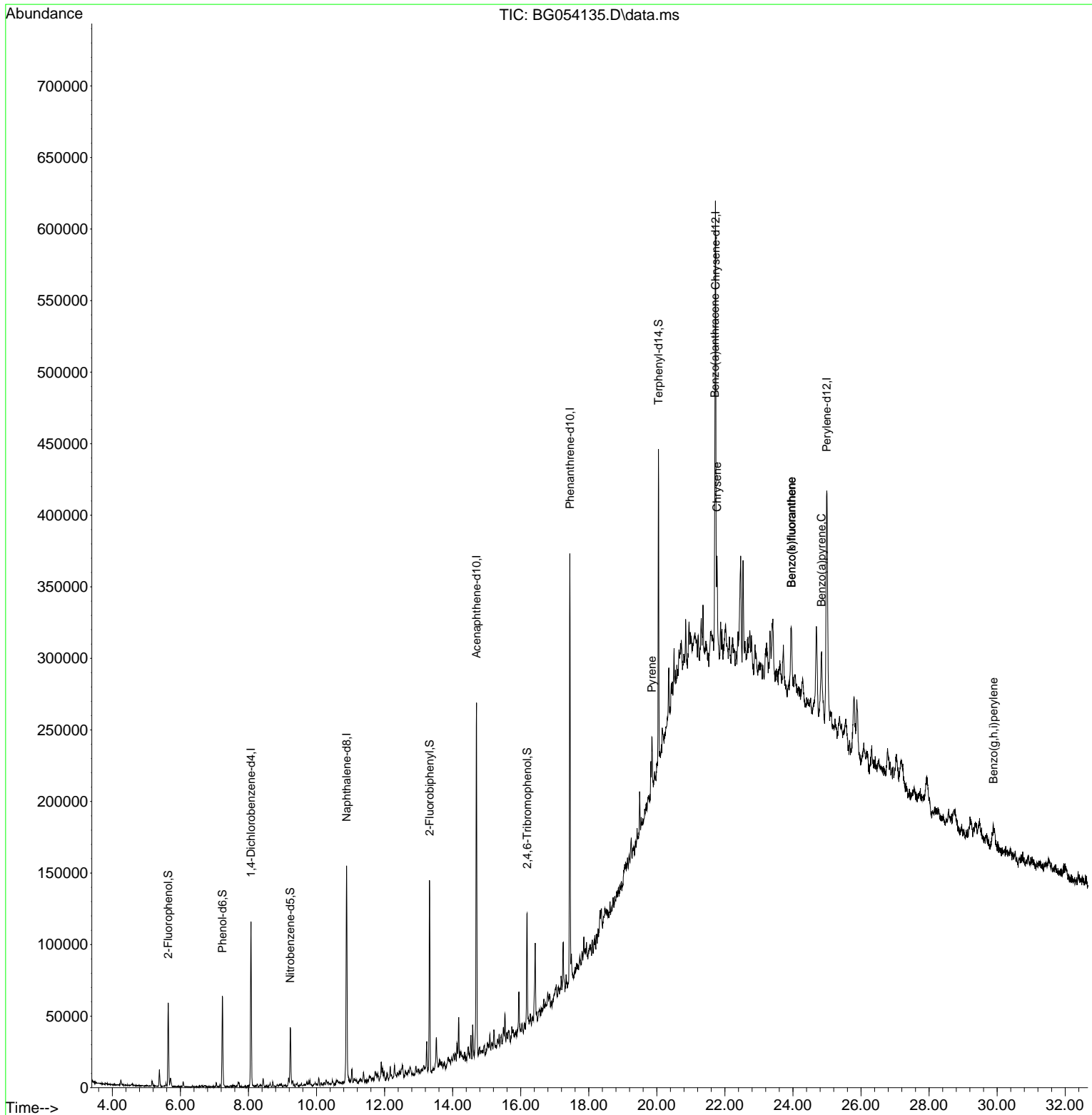
Compound	R.T.	QIon	Response	Conc	Units	Dev(Min)
Internal Standards						
1) 1,4-Dichlorobenzene-d4	8.073	152	35241	20.000	ng	0.00
21) Naphthalene-d8	10.882	136	139558	20.000	ng	0.00
39) Acenaphthene-d10	14.701	164	93329	20.000	ng	0.00
64) Phenanthrene-d10	17.445	188	200024	20.000	ng	0.00
76) Chrysene-d12	21.722	240	203845	20.000	ng	0.00
86) Perylene-d12	24.989	264	210492	20.000	ng	0.03
System Monitoring Compounds						
5) 2-Fluorophenol	5.641	112	29812	16.174	ng	0.00
7) Phenol-d6	7.239	99	39564	15.823	ng	0.00
23) Nitrobenzene-d5	9.231	82	26994	10.870	ng	0.00
42) 2,4,6-Tribromophenol	16.187	330	19981	13.325	ng	0.00
45) 2-Fluorobiphenyl	13.320	172	74693	11.638	ng	0.00
79) Terphenyl-d14	20.047	244	120366	11.893	ng	0.00
Target Compounds						
78) Pyrene	19.854	202	27400	2.226	ng	# 96
81) Benzo(a)anthracene	21.704	228	40356	3.058	ng	# 89
83) Chrysene	21.769	228	62665	4.981	ng	# 89
88) Benzo(b)fluoranthene	23.961	252	57936	4.527	ng	# 83
89) Benzo(k)fluoranthene	23.961	252	57936	4.572	ng	# 84
90) Benzo(a)pyrene	24.842	252	57491	5.324	ng	# 89
92) Benzo(g,h,i)perylene	29.895	276	31827	2.455	ng	# 87

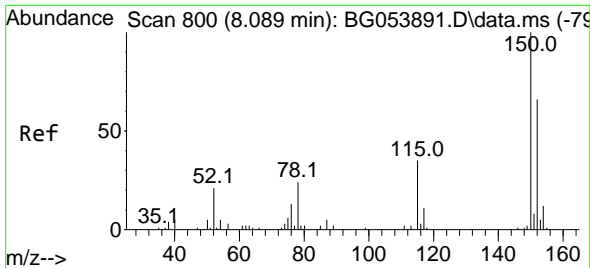
(#) = qualifier out of range (m) = manual integration (+) = signals summed

Data Path : Z:\svoasrv\HPCHEM1\BNA_G\Data\BG062822\
 Data File : BG054135.D
 Acq On : 29 Jun 2022 2:41
 Operator : CG/JU
 Sample : N3494-06 5X
 Misc :
 ALS Vial : 16 Sample Multiplier: 1

Instrument :
 BNA_G
 ClientSampleId :
 SP-EXC-1-4

Quant Time: Jun 29 03:15:27 2022
 Quant Method : Z:\svoasrv\HPCHEM1\BNA_G\Methods\8270-BG061322.M
 Quant Title : ASP BNA STANDARDS FOR 5 POINT CALIBRATION
 QLast Update : Mon Jun 27 00:27:54 2022
 Response via : Initial Calibration

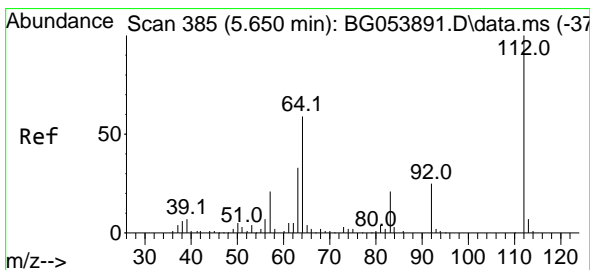
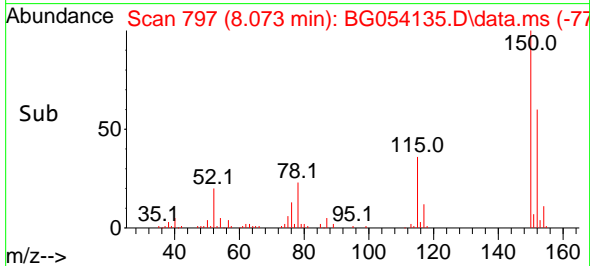
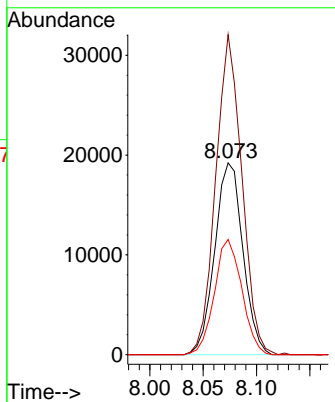
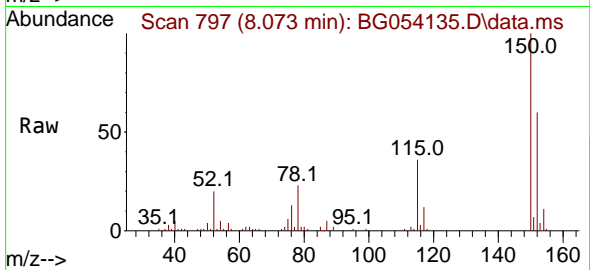




#1
 1,4-Dichlorobenzene-d4
 Concen: 20.000 ng
 RT: 8.073 min Scan# 71
 Delta R.T. 0.003 min
 Lab File: BG054135.D
 Acq: 29 Jun 2022 2:41

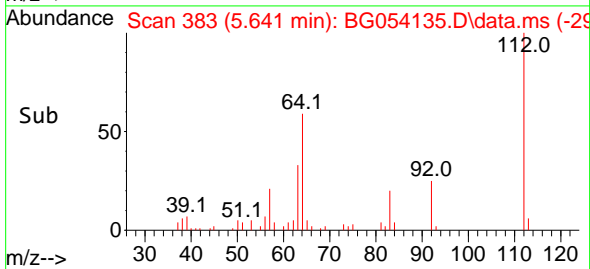
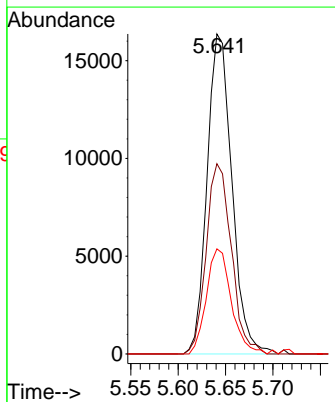
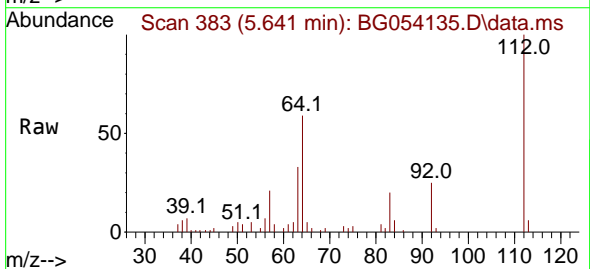
Instrument :
 BNA_G
 ClientSampleId :
 SP-EXC-1-4

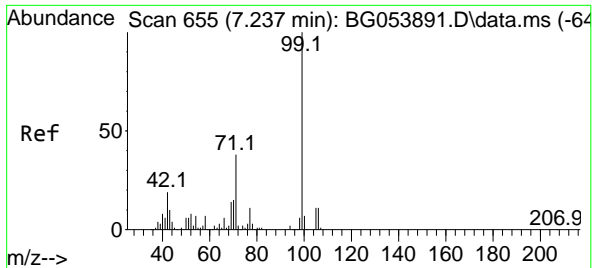
Tgt Ion:152 Resp: 35241
 Ion Ratio Lower Upper
 152 100
 150 166.8 131.6 197.4
 115 60.0 50.9 76.3



#5
 2-Fluorophenol
 Concen: 16.174 ng
 RT: 5.641 min Scan# 383
 Delta R.T. 0.003 min
 Lab File: BG054135.D
 Acq: 29 Jun 2022 2:41

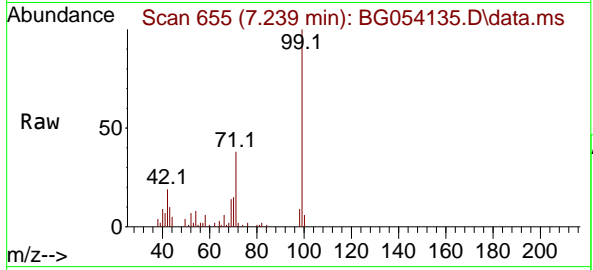
Tgt Ion:112 Resp: 29812
 Ion Ratio Lower Upper
 112 100
 64 59.5 55.1 82.7
 63 32.9 30.4 45.6





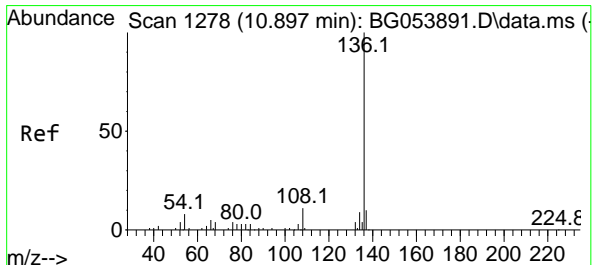
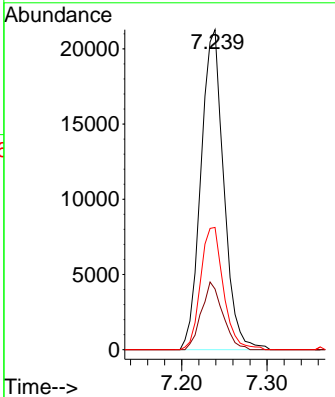
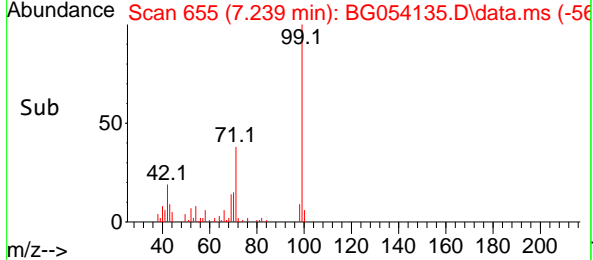
#7
 Phenol-d6
 Concen: 15.823 ng
 RT: 7.239 min Scan# 61
 Delta R.T. 0.009 min
 Lab File: BG054135.D
 Acq: 29 Jun 2022 2:41

Instrument : BNA_G
 ClientSampleId : SP-EXC-1-4

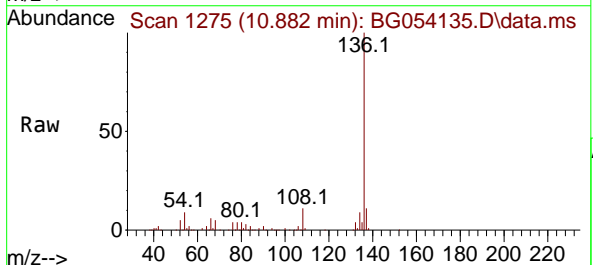


Tgt Ion: 99 Resp: 39564

Ion	Ratio	Lower	Upper
99	100		
42	18.9	17.0	25.6
71	38.2	33.8	50.8

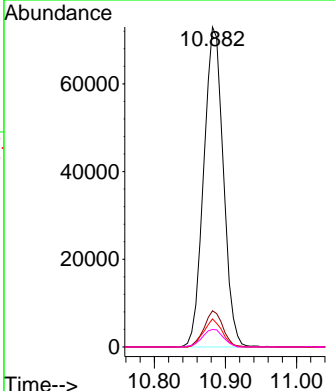
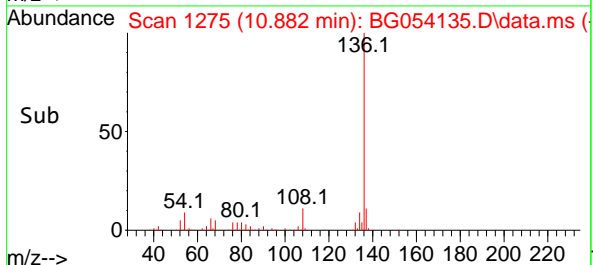


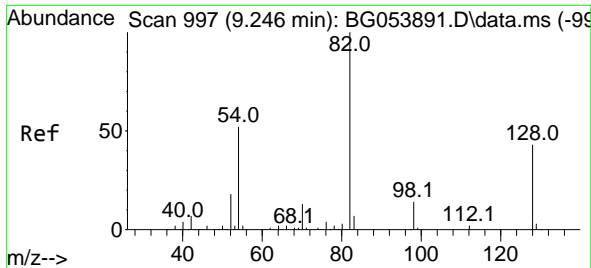
#21
 Naphthalene-d8
 Concen: 20.000 ng
 RT: 10.882 min Scan# 1275
 Delta R.T. 0.003 min
 Lab File: BG054135.D
 Acq: 29 Jun 2022 2:41



Tgt Ion: 136 Resp: 139558

Ion	Ratio	Lower	Upper
136	100		
137	11.3	8.5	12.7
54	8.7	7.4	11.2
68	5.5	4.9	7.3

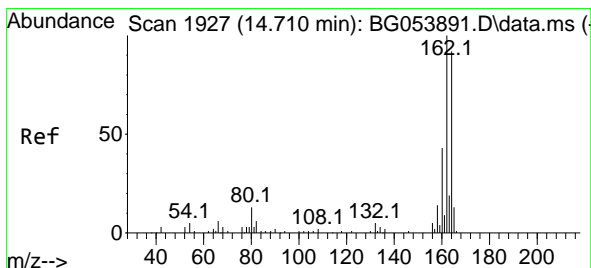
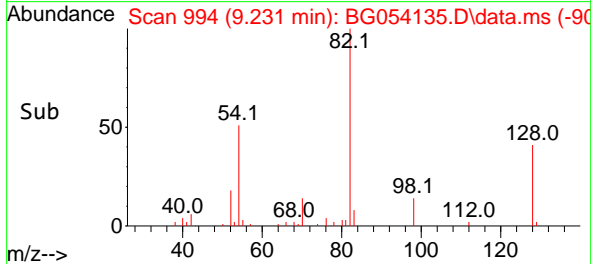
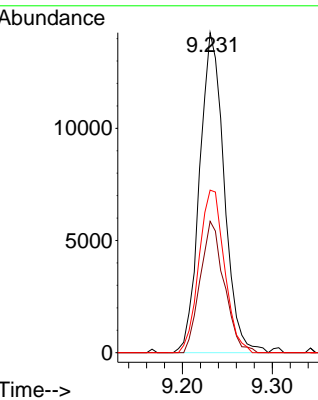
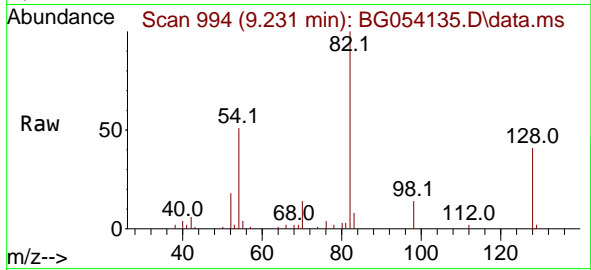




#23
 Nitrobenzene-d5
 Concen: 10.870 ng
 RT: 9.231 min Scan# 91
 Delta R.T. -0.003 min
 Lab File: BG054135.D
 Acq: 29 Jun 2022 2:41

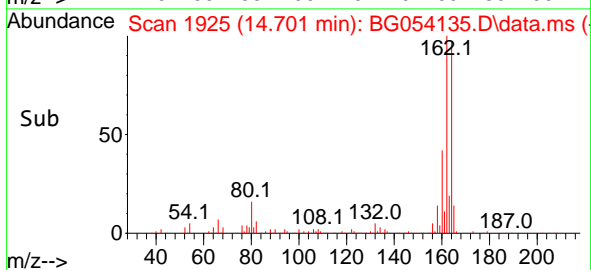
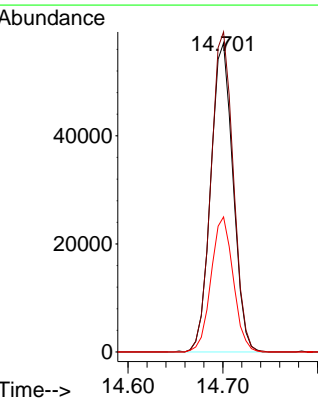
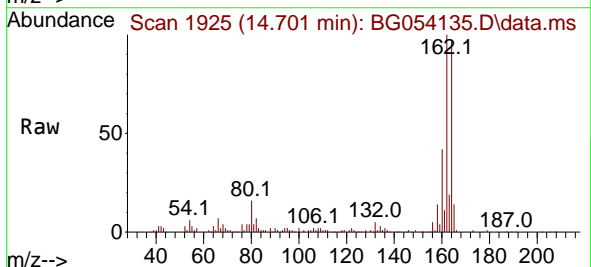
Instrument :
 BNA_G
 ClientSampleId :
 SP-EXC-1-4

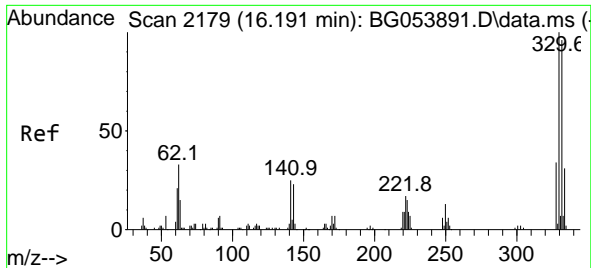
Tgt Ion:	82	Resp:	26994
Ion Ratio	100	Lower	Upper
128	41.0	27.9	41.9
54	50.8	41.2	61.8



#39
 Acenaphthene-d10
 Concen: 20.000 ng
 RT: 14.701 min Scan# 1925
 Delta R.T. 0.003 min
 Lab File: BG054135.D
 Acq: 29 Jun 2022 2:41

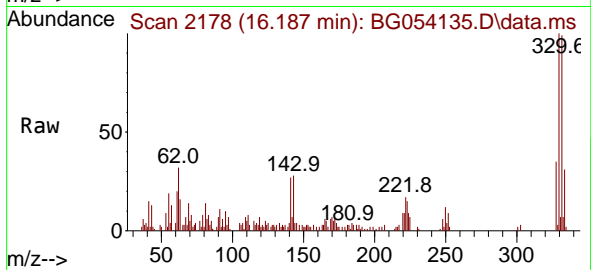
Tgt Ion:	164	Resp:	93329
Ion Ratio	100	Lower	Upper
162	103.6	82.3	123.5
160	43.7	34.2	51.2



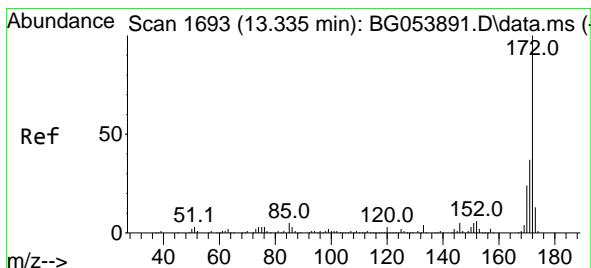
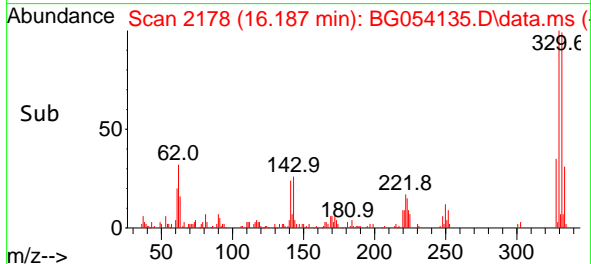
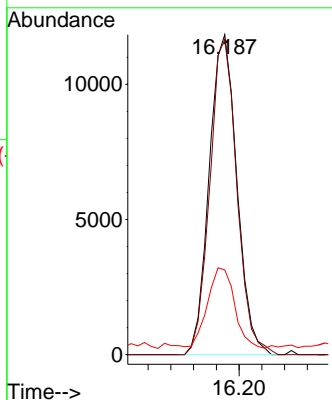


#42
 2,4,6-Tribromophenol
 Concen: 13.325 ng
 RT: 16.187 min Scan# 2178
 Delta R.T. 0.003 min
 Lab File: BG054135.D
 Acq: 29 Jun 2022 2:41

Instrument :
 BNA_G
 ClientSampleId :
 SP-EXC-1-4

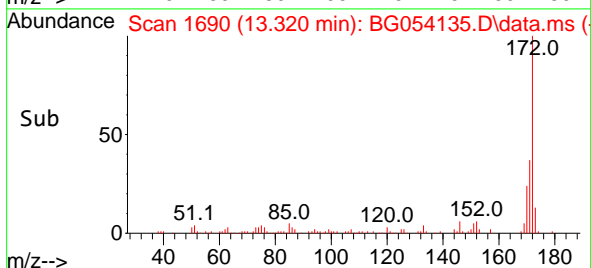
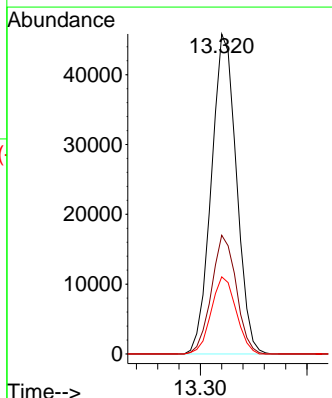
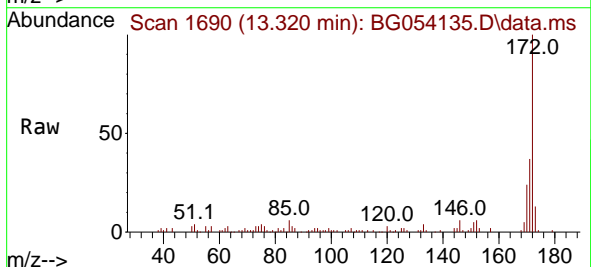


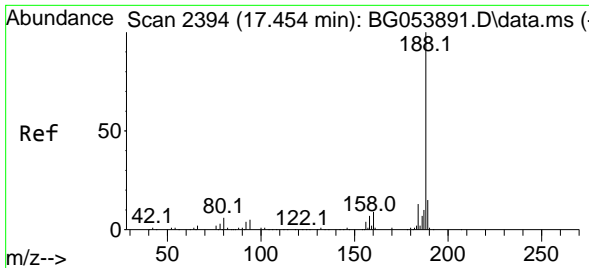
Tgt Ion:330 Resp: 19981
 Ion Ratio Lower Upper
 330 100
 332 96.3 76.0 114.0
 141 24.7 27.1 40.7#



#45
 2-Fluorobiphenyl
 Concen: 11.638 ng
 RT: 13.320 min Scan# 1690
 Delta R.T. -0.003 min
 Lab File: BG054135.D
 Acq: 29 Jun 2022 2:41

Tgt Ion:172 Resp: 74693
 Ion Ratio Lower Upper
 172 100
 171 37.1 28.5 42.7
 170 24.1 18.9 28.3



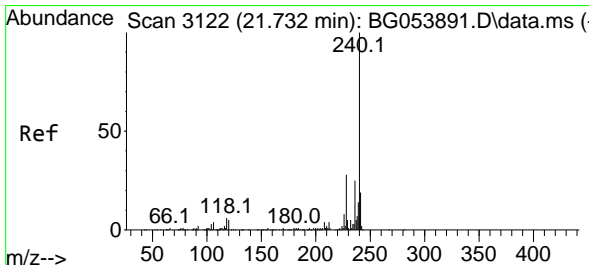
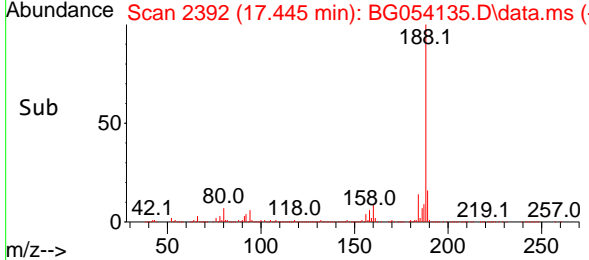
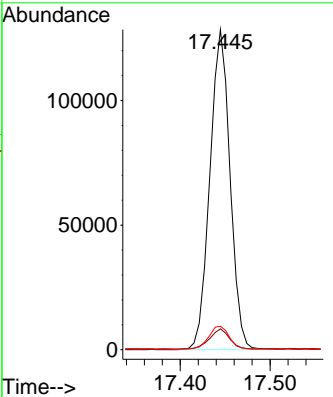
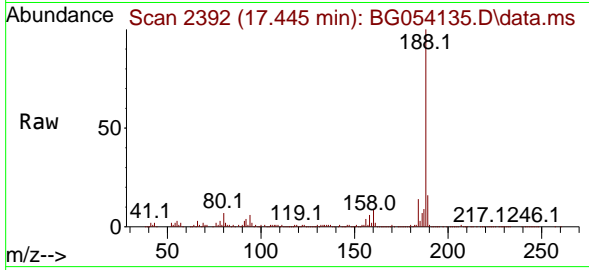


#64
 Phenanthrene-d10
 Concen: 20.000 ng
 RT: 17.445 min Scan# 21
 Delta R.T. 0.003 min
 Lab File: BG054135.D
 Acq: 29 Jun 2022 2:41

Instrument : BNA_G
 ClientSampleId : SP-EXC-1-4

Tgt Ion:188 Resp: 200024

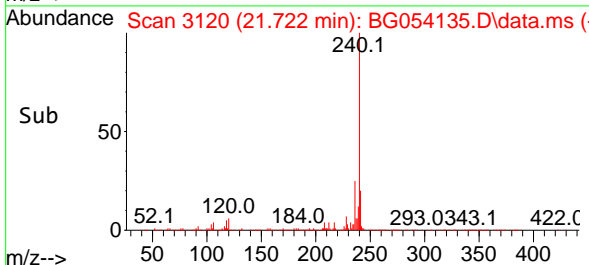
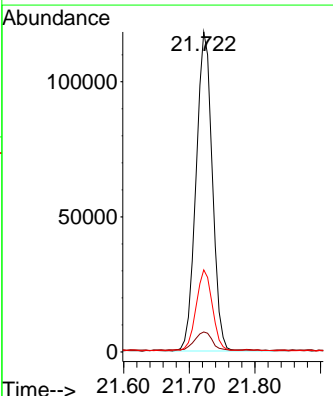
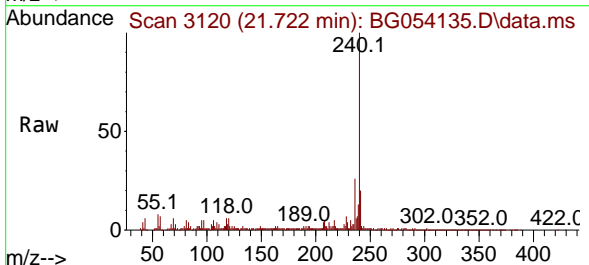
Ion	Ratio	Lower	Upper
188	100		
94	6.5	5.4	8.0
80	7.3	6.8	10.2

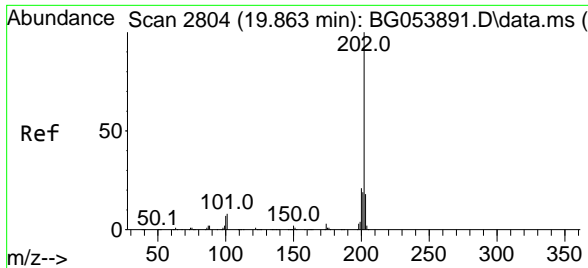


#76
 Chrysene-d12
 Concen: 20.000 ng
 RT: 21.722 min Scan# 3120
 Delta R.T. 0.003 min
 Lab File: BG054135.D
 Acq: 29 Jun 2022 2:41

Tgt Ion:240 Resp: 203845

Ion	Ratio	Lower	Upper
240	100		
120	6.3	4.6	7.0
236	25.6	20.2	30.4



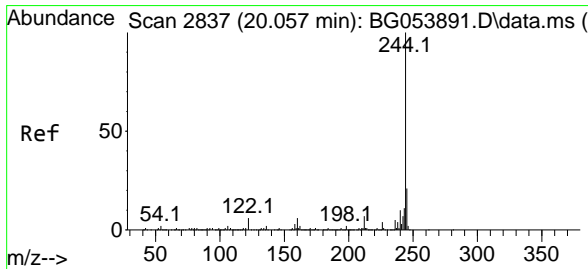
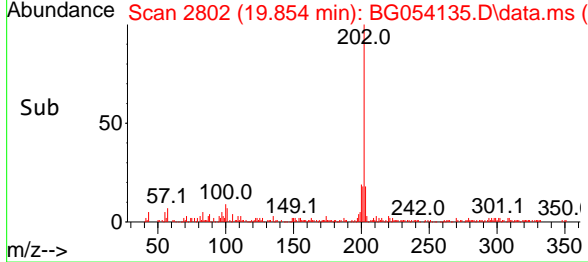
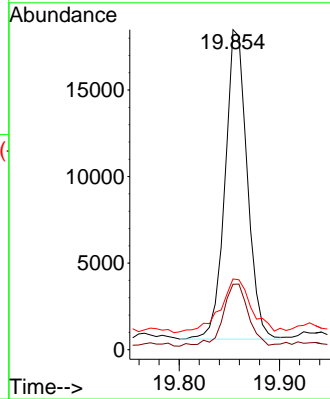
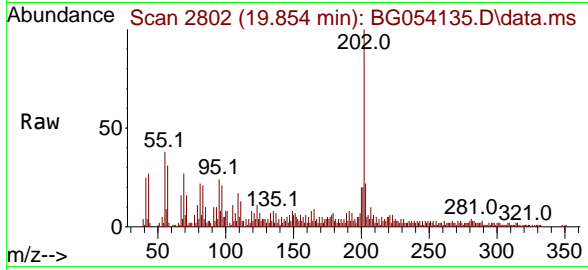


#78
 Pyrene
 Concen: 2.226 ng
 RT: 19.854 min Scan# 2802
 Delta R.T. 0.003 min
 Lab File: BG054135.D
 Acq: 29 Jun 2022 2:41

Instrument :
 BNA_G
 ClientSampleId :
 SP-EXC-1-4

Tgt Ion:202 Resp: 27400

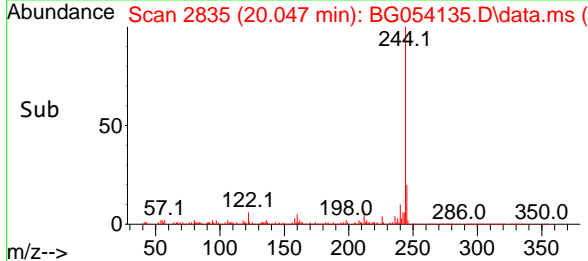
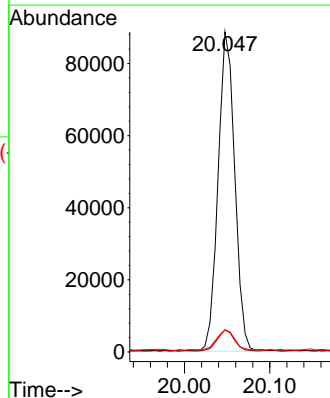
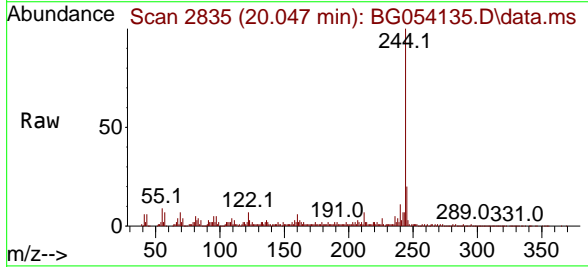
Ion	Ratio	Lower	Upper
202	100		
200	20.5	16.6	24.8
203	22.1	14.6	21.8

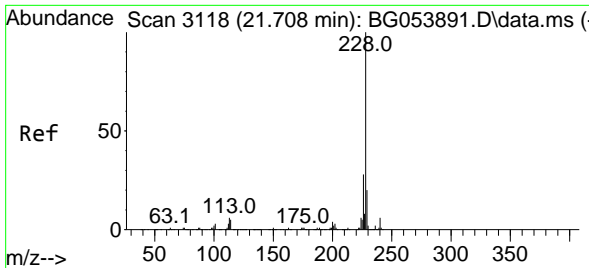


#79
 Terphenyl-d14
 Concen: 11.893 ng
 RT: 20.047 min Scan# 2835
 Delta R.T. 0.003 min
 Lab File: BG054135.D
 Acq: 29 Jun 2022 2:41

Tgt Ion:244 Resp: 120366

Ion	Ratio	Lower	Upper
244	100		
212	6.9	6.5	9.7
122	6.9	5.0	7.4

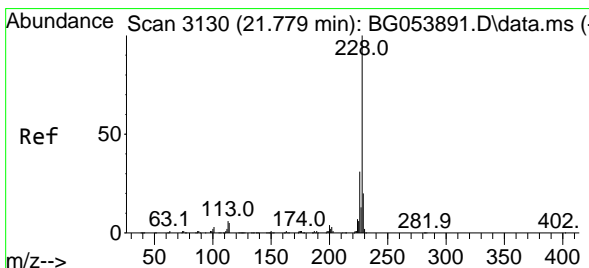
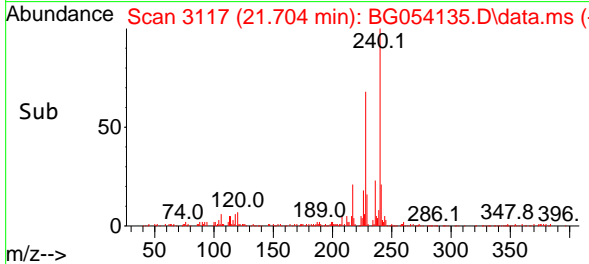
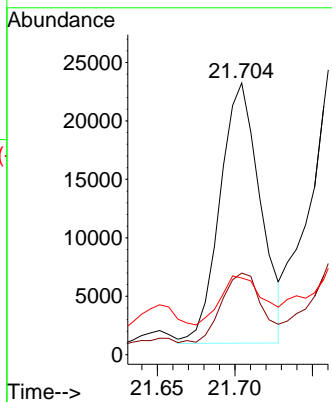
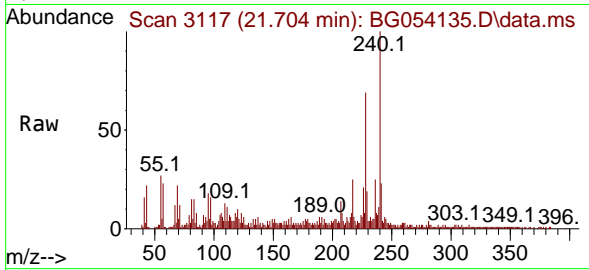




#81
 Benzo(a)anthracene
 Concen: 3.058 ng
 RT: 21.704 min Scan# 3117
 Delta R.T. 0.009 min
 Lab File: BG054135.D
 Acq: 29 Jun 2022 2:41

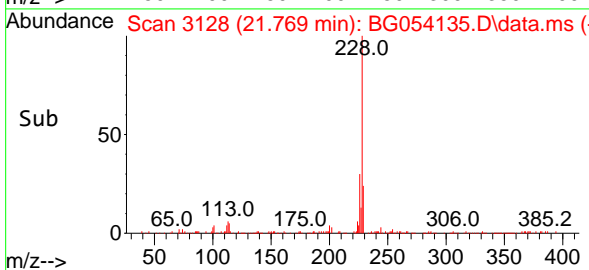
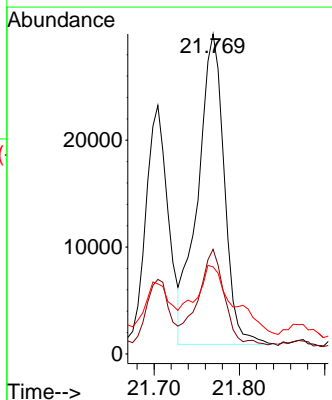
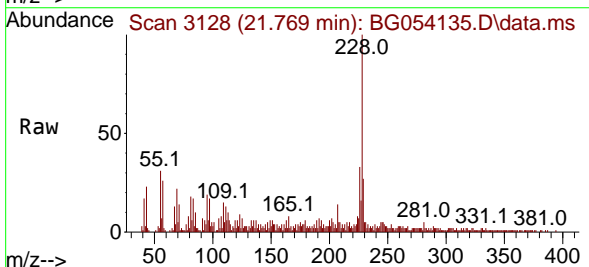
Instrument :
 BNA_G
 ClientSampleId :
 SP-EXC-1-4

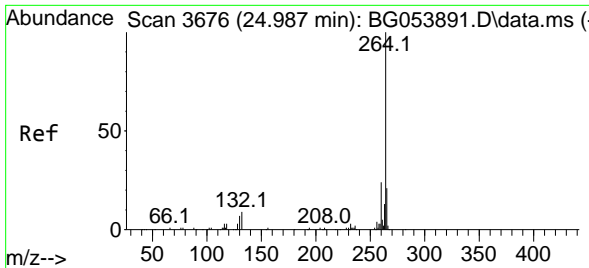
Tgt Ion:228 Resp: 40356
 Ion Ratio Lower Upper
 228 100
 226 30.0 21.6 32.4
 229 28.2 16.2 24.2#



#83
 Chrysene
 Concen: 4.981 ng
 RT: 21.769 min Scan# 3128
 Delta R.T. 0.009 min
 Lab File: BG054135.D
 Acq: 29 Jun 2022 2:41

Tgt Ion:228 Resp: 62665
 Ion Ratio Lower Upper
 228 100
 226 32.7 23.4 35.2
 229 27.2 15.5 23.3#



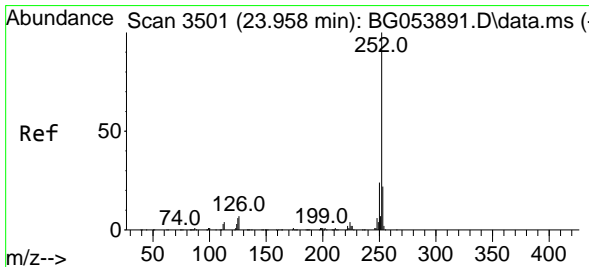
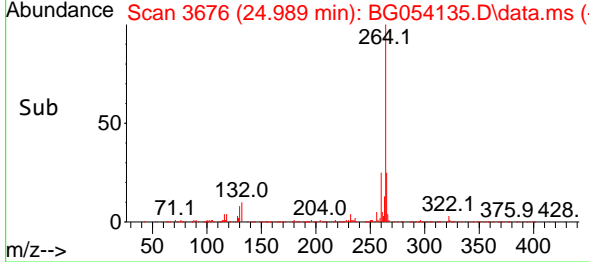
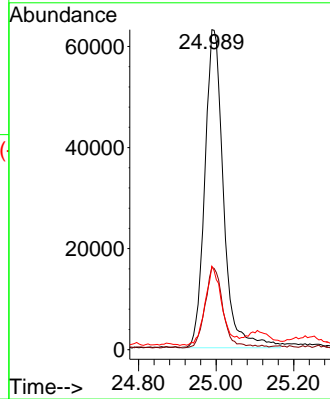
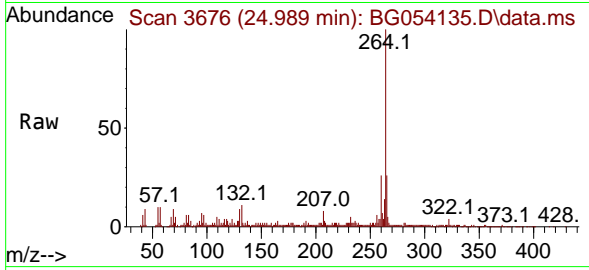


#86
 Perylene-d12
 Concen: 20.000 ng
 RT: 24.989 min Scan# 30
 Delta R.T. 0.026 min
 Lab File: BG054135.D
 Acq: 29 Jun 2022 2:41

Instrument :
 BNA_G
 ClientSampleId :
 SP-EXC-1-4

Tgt Ion:264 Resp: 210492

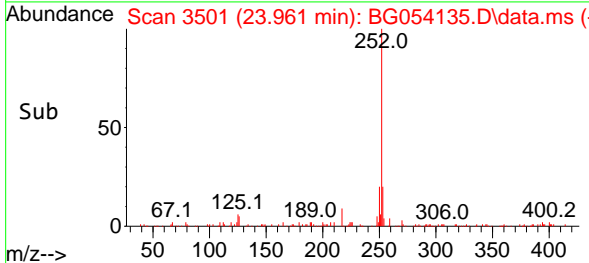
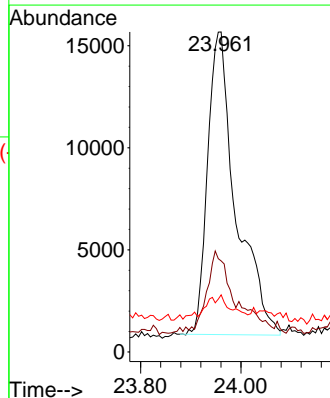
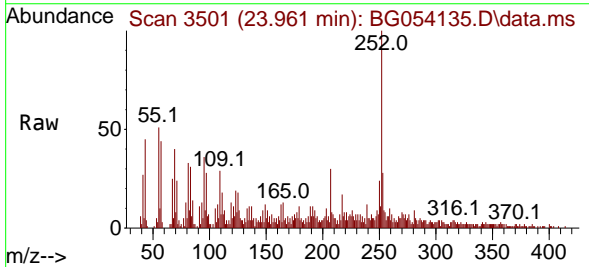
Ion	Ratio	Lower	Upper
264	100		
260	25.8	19.0	28.6
265	26.0	17.4	26.2

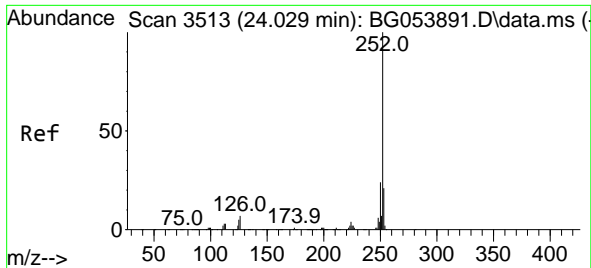


#88
 Benzo(b)fluoranthene
 Concen: 4.527 ng
 RT: 23.961 min Scan# 3501
 Delta R.T. 0.026 min
 Lab File: BG054135.D
 Acq: 29 Jun 2022 2:41

Tgt Ion:252 Resp: 57936

Ion	Ratio	Lower	Upper
252	100		
253	28.4	18.0	27.0#
125	17.9	4.6	6.8#

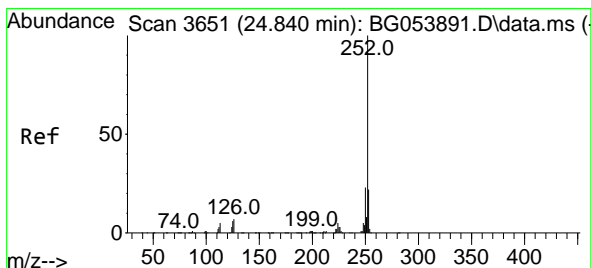
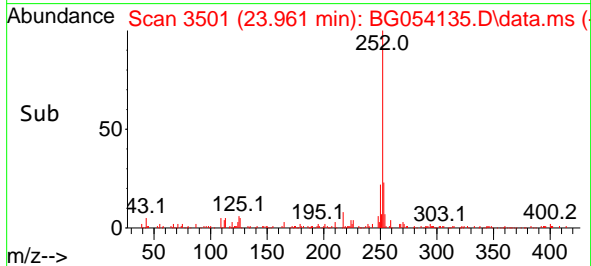
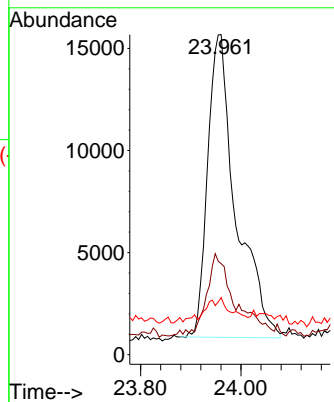
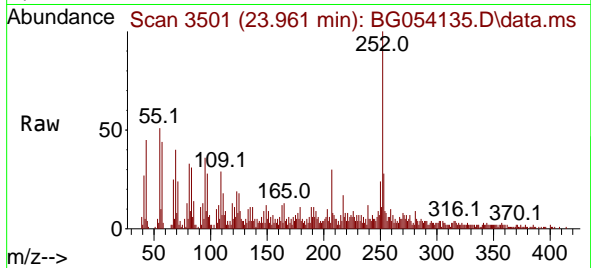




#89
 Benzo(k)fluoranthene
 Concen: 4.572 ng
 RT: 23.961 min Scan# 31
 Delta R.T. -0.044 min
 Lab File: BG054135.D
 Acq: 29 Jun 2022 2:41

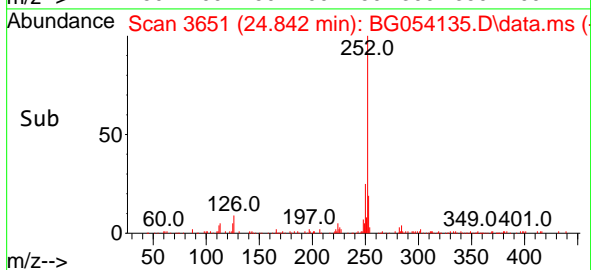
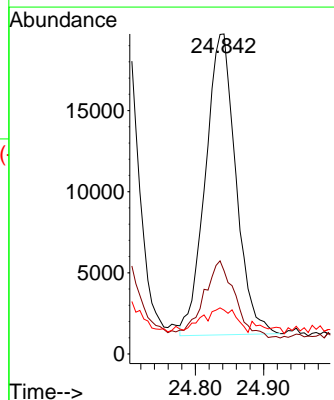
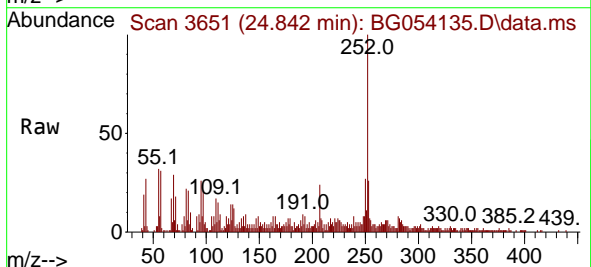
Instrument :
 BNA_G
 ClientSampleId :
 SP-EXC-1-4

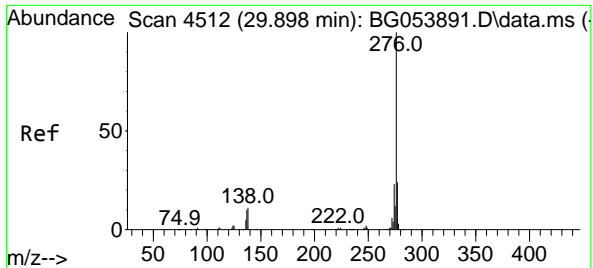
Tgt Ion:252 Resp: 57936
 Ion Ratio Lower Upper
 252 100
 253 28.4 18.4 27.6#
 125 17.9 4.8 7.2#



#90
 Benzo(a)pyrene
 Concen: 5.324 ng
 RT: 24.842 min Scan# 3651
 Delta R.T. 0.026 min
 Lab File: BG054135.D
 Acq: 29 Jun 2022 2:41

Tgt Ion:252 Resp: 57491
 Ion Ratio Lower Upper
 252 100
 253 26.0 17.8 26.8
 125 13.7 4.3 6.5#





#92
 Benzo(g,h,i)perylene
 Concen: 2.455 ng
 RT: 29.895 min Scan# 41
 Delta R.T. 0.032 min
 Lab File: BG054135.D
 Acq: 29 Jun 2022 2:41

Instrument :
 BNA_G
 ClientSampleId :
 SP-EXC-1-4

Tgt Ion: 276 Resp: 31827

Ion	Ratio	Lower	Upper
276	100		
277	28.9	17.3	25.9#
138	15.5	9.6	14.4#

