

Data Path : Z:\HPCHEM1\BNA_G\DATA\BG070116\
 Data File : BG022786.D
 Acq On : 2 Jul 2016 9:48
 Operator : UM/SJ
 Sample : H3752-13
 Misc :
 ALS Vial : 30 Sample Multiplier: 1

Instrument :
 BNA_G
 ClientSampleId :
 BDHM6

Integration Parameters: LSCINT.P

Integrator: RTE
 Smoothing : OFF
 Sampling : 1
 Start Thrs: 0.2
 Stop Thrs : 0

Filtering: 5
 Min Area: 0.1 % of largest Peak
 Max Peaks: 100
 Peak Location: TOP

If leading or trailing edge < 100 prefer < Baseline drop else tangent >
 Peak separation: 5

Method : Z:\HPCHEM1\BNA_G\METHODS\SOM02.2-EPA-BG063016.M
 Title : SVOA CALIBRATION

Signal : TIC

| peak # | R.T. min | first scan | max scan | last scan | PK TY | peak height | corr. area | corr. % max. | % of total |
|--------|----------|------------|----------|-----------|-------|-------------|------------|--------------|------------|
| 1 | 3.544 | 118 | 120 | 124 | rVB5 | 14489 | 15259 | 0.35% | 0.032% |
| 2 | 3.814 | 163 | 166 | 171 | rBV2 | 47925 | 76701 | 1.75% | 0.163% |
| 3 | 4.202 | 229 | 232 | 233 | rBV2 | 7228 | 7174 | 0.16% | 0.015% |
| 4 | 4.302 | 247 | 249 | 253 | rBV4 | 8624 | 9420 | 0.21% | 0.020% |
| 5 | 4.407 | 265 | 267 | 269 | rBV3 | 6782 | 7128 | 0.16% | 0.015% |
| 6 | 5.218 | 401 | 405 | 406 | rBV4 | 4722 | 7076 | 0.16% | 0.015% |
| 7 | 6.217 | 573 | 575 | 578 | rVB3 | 7204 | 6378 | 0.15% | 0.014% |
| 8 | 6.440 | 608 | 613 | 618 | rVB7 | 7253 | 14511 | 0.33% | 0.031% |
| 9 | 6.546 | 627 | 631 | 633 | rBV3 | 6576 | 8688 | 0.20% | 0.019% |
| 10 | 7.075 | 718 | 721 | 723 | rBV2 | 7005 | 7576 | 0.17% | 0.016% |
| 11 | 7.310 | 754 | 761 | 770 | rBV2 | 498419 | 898163 | 20.49% | 1.913% |
| 12 | 7.474 | 781 | 789 | 799 | rBV | 316509 | 574961 | 13.12% | 1.225% |
| 13 | 7.580 | 805 | 807 | 811 | rVB4 | 6342 | 7459 | 0.17% | 0.016% |
| 14 | 7.692 | 819 | 826 | 835 | rBV | 434987 | 796199 | 18.17% | 1.696% |
| 15 | 8.162 | 899 | 906 | 916 | rBV | 505699 | 862891 | 19.69% | 1.838% |
| 16 | 8.532 | 965 | 969 | 971 | rBV3 | 5490 | 6906 | 0.16% | 0.015% |
| 17 | 8.861 | 1018 | 1025 | 1035 | rBV | 634397 | 1144901 | 26.12% | 2.438% |
| 18 | 9.119 | 1066 | 1069 | 1072 | rBV3 | 7798 | 10448 | 0.24% | 0.022% |
| 19 | 9.331 | 1098 | 1105 | 1114 | rBV | 476436 | 863162 | 19.69% | 1.838% |
| 20 | 9.425 | 1117 | 1121 | 1125 | rVB4 | 9132 | 11962 | 0.27% | 0.025% |
| 21 | 9.719 | 1167 | 1171 | 1176 | rBV5 | 13042 | 21414 | 0.49% | 0.046% |
| 22 | 10.060 | 1220 | 1229 | 1239 | rBV2 | 433116 | 800113 | 18.26% | 1.704% |
| 23 | 10.283 | 1264 | 1267 | 1269 | rBV2 | 7436 | 7649 | 0.17% | 0.016% |
| 24 | 10.447 | 1292 | 1295 | 1296 | rBV | 5811 | 6870 | 0.16% | 0.015% |
| 25 | 10.600 | 1312 | 1321 | 1331 | rBV | 674708 | 1246279 | 28.44% | 2.654% |
| 26 | 10.712 | 1338 | 1340 | 1344 | rBV3 | 4747 | 7902 | 0.18% | 0.017% |
| 27 | 10.741 | 1344 | 1345 | 1349 | rVB3 | 7339 | 7467 | 0.17% | 0.016% |
| 28 | 10.988 | 1379 | 1387 | 1398 | rVB | 765795 | 1401967 | 31.99% | 2.986% |
| 29 | 11.123 | 1401 | 1410 | 1418 | rBV | 640600 | 1188773 | 27.12% | 2.532% |
| 30 | 11.188 | 1418 | 1421 | 1422 | rVB3 | 7018 | 6132 | 0.14% | 0.013% |
| 31 | 11.452 | 1462 | 1466 | 1468 | rBV3 | 5681 | 7160 | 0.16% | 0.015% |
| 32 | 11.934 | 1544 | 1548 | 1552 | rBV3 | 7656 | 9633 | 0.22% | 0.021% |
| 33 | 12.175 | 1584 | 1589 | 1592 | rVB6 | 3753 | 6548 | 0.15% | 0.014% |
| 34 | 12.245 | 1600 | 1601 | 1605 | rVB3 | 7846 | 6663 | 0.15% | 0.014% |

Data Path : Z:\HPCHEM1\BNA_G\DATA\BG070116\
 Data File : BG022786.D
 Acq On : 2 Jul 2016 9:48
 Operator : UM/SJ
 Sample : H3752-13
 Misc :
 ALS Vial : 30 Sample Multiplier: 1

Instrument :
 BNA_G
 ClientSampleId :
 BDHM6

Integration Parameters: LSCINT.P

Integrator: RTE
 Smoothing : OFF
 Sampling : 1
 Start Thrs: 0.2
 Stop Thrs : 0

Filtering: 5
 Min Area: 0.1 % of largest Peak
 Max Peaks: 100
 Peak Location: TOP

If leading or trailing edge < 100 prefer < Baseline drop else tangent >
 Peak separation: 5

Method : Z:\HPCHEM1\BNA_G\METHODS\SOM02.2-EPA-BG063016.M
 Title : SVOA CALIBRATION

| | | | | | | | | | |
|----|--------|------|------|------|------|---------|---------|--------|--------|
| 35 | 12.357 | 1616 | 1620 | 1622 | rBV2 | 4825 | 7685 | 0.18% | 0.016% |
| 36 | 12.568 | 1652 | 1656 | 1662 | rVB5 | 15391 | 29299 | 0.67% | 0.062% |
| 37 | 13.056 | 1736 | 1739 | 1741 | rBV4 | 7401 | 9192 | 0.21% | 0.020% |
| 38 | 13.156 | 1753 | 1756 | 1760 | rBV5 | 10171 | 12908 | 0.29% | 0.027% |
| 39 | 13.226 | 1764 | 1768 | 1769 | rBV2 | 5135 | 7665 | 0.17% | 0.016% |
| 40 | 13.403 | 1794 | 1798 | 1801 | rBV5 | 5133 | 7527 | 0.17% | 0.016% |
| 41 | 13.450 | 1803 | 1806 | 1808 | rBV3 | 6924 | 7531 | 0.17% | 0.016% |
| 42 | 13.591 | 1826 | 1830 | 1832 | rBV3 | 7594 | 10078 | 0.23% | 0.021% |
| 43 | 13.673 | 1842 | 1844 | 1852 | rVB4 | 19017 | 23616 | 0.54% | 0.050% |
| 44 | 13.732 | 1852 | 1854 | 1857 | rVB3 | 8979 | 8938 | 0.20% | 0.019% |
| 45 | 13.761 | 1857 | 1859 | 1863 | rBV3 | 5592 | 8590 | 0.20% | 0.018% |
| 46 | 14.102 | 1915 | 1917 | 1920 | rBV3 | 6679 | 6752 | 0.15% | 0.014% |
| 47 | 14.196 | 1925 | 1933 | 1938 | rVV | 1438628 | 2212349 | 50.48% | 4.712% |
| 48 | 14.243 | 1938 | 1941 | 1947 | rVB | 189408 | 279869 | 6.39% | 0.596% |
| 49 | 14.495 | 1977 | 1984 | 1992 | rBV | 1466006 | 2371891 | 54.12% | 5.052% |
| 50 | 14.625 | 2003 | 2006 | 2011 | rBV6 | 4745 | 6380 | 0.15% | 0.014% |
| 51 | 14.672 | 2011 | 2014 | 2020 | rVV6 | 18953 | 29258 | 0.67% | 0.062% |
| 52 | 14.742 | 2023 | 2026 | 2029 | rBV3 | 8711 | 11361 | 0.26% | 0.024% |
| 53 | 14.807 | 2029 | 2037 | 2045 | rVB2 | 1475503 | 2465364 | 56.25% | 5.251% |
| 54 | 14.995 | 2063 | 2069 | 2081 | rBV2 | 572827 | 1066155 | 24.33% | 2.271% |
| 55 | 15.289 | 2117 | 2119 | 2123 | rVB4 | 6427 | 7140 | 0.16% | 0.015% |
| 56 | 15.535 | 2160 | 2161 | 2165 | rVB4 | 7572 | 7458 | 0.17% | 0.016% |
| 57 | 15.582 | 2165 | 2169 | 2171 | rBV4 | 11123 | 15325 | 0.35% | 0.033% |
| 58 | 15.624 | 2172 | 2176 | 2179 | rVV5 | 26414 | 36818 | 0.84% | 0.078% |
| 59 | 15.794 | 2198 | 2205 | 2214 | rVB | 2202969 | 3417176 | 77.97% | 7.278% |
| 60 | 15.906 | 2218 | 2224 | 2232 | rVV2 | 631930 | 959968 | 21.90% | 2.045% |
| 61 | 16.035 | 2240 | 2246 | 2249 | rBV4 | 36295 | 53191 | 1.21% | 0.113% |
| 62 | 16.117 | 2259 | 2260 | 2265 | rVB4 | 8289 | 9144 | 0.21% | 0.019% |
| 63 | 16.252 | 2280 | 2283 | 2286 | rVB5 | 13472 | 14193 | 0.32% | 0.030% |
| 64 | 16.440 | 2313 | 2315 | 2318 | rVB3 | 9830 | 7721 | 0.18% | 0.016% |
| 65 | 16.487 | 2320 | 2323 | 2329 | rVV5 | 41123 | 57759 | 1.32% | 0.123% |
| 66 | 16.705 | 2358 | 2360 | 2363 | rBV3 | 7683 | 8256 | 0.19% | 0.018% |
| 67 | 16.763 | 2363 | 2370 | 2373 | rVV7 | 14037 | 32126 | 0.73% | 0.068% |
| 68 | 16.822 | 2379 | 2380 | 2382 | rBV2 | 8481 | 8245 | 0.19% | 0.018% |
| 69 | 16.951 | 2400 | 2402 | 2405 | rVB4 | 13251 | 10688 | 0.24% | 0.023% |
| 70 | 17.069 | 2419 | 2422 | 2425 | rVB5 | 11529 | 15052 | 0.34% | 0.032% |
| 71 | 17.286 | 2454 | 2459 | 2462 | rBV | 67199 | 87445 | 2.00% | 0.186% |

Data Path : Z:\HPCHEM1\BNA_G\DATA\BG070116\
 Data File : BG022786.D
 Acq On : 2 Jul 2016 9:48
 Operator : UM/SJ
 Sample : H3752-13
 Misc :
 ALS Vial : 30 Sample Multiplier: 1

Instrument :
 BNA_G
 ClientSampleId :
 BDHM6

Integration Parameters: LSCINT.P

Integrator: RTE
 Smoothing : OFF Filtering: 5
 Sampling : 1 Min Area: 0.1 % of largest Peak
 Start Thrs: 0.2 Max Peaks: 100
 Stop Thrs : 0 Peak Location: TOP

If leading or trailing edge < 100 prefer < Baseline drop else tangent >
 Peak separation: 5

Method : Z:\HPCHEM1\BNA_G\METHODS\SOM02.2-EPA-BG063016.M
 Title : SVOA CALIBRATION

| | | | | | | | | | |
|----|--------|------|------|------|------|---------|---------|---------|--------|
| 72 | 17.557 | 2498 | 2505 | 2514 | rBV2 | 2133013 | 3261179 | 74.41% | 6.946% |
| 73 | 17.656 | 2515 | 2522 | 2529 | rVB | 2404417 | 3676706 | 83.89% | 7.831% |
| 74 | 17.886 | 2560 | 2561 | 2564 | rBV3 | 11937 | 15289 | 0.35% | 0.033% |
| 75 | 18.027 | 2582 | 2585 | 2589 | rVB3 | 23309 | 19369 | 0.44% | 0.041% |
| 76 | 18.244 | 2620 | 2622 | 2625 | rBV4 | 6945 | 8461 | 0.19% | 0.018% |
| 77 | 18.273 | 2625 | 2627 | 2630 | rVV4 | 7477 | 7806 | 0.18% | 0.017% |
| 78 | 18.420 | 2648 | 2652 | 2658 | rBV2 | 190899 | 241359 | 5.51% | 0.514% |
| 79 | 18.497 | 2663 | 2665 | 2671 | rVB7 | 20247 | 32938 | 0.75% | 0.070% |
| 80 | 18.914 | 2735 | 2736 | 2737 | rBV | 13626 | 7502 | 0.17% | 0.016% |
| 81 | 19.131 | 2772 | 2773 | 2775 | rBV2 | 11029 | 7418 | 0.17% | 0.016% |
| 82 | 19.337 | 2806 | 2808 | 2809 | rBV2 | 12665 | 8251 | 0.19% | 0.018% |
| 83 | 19.683 | 2864 | 2867 | 2875 | rBV8 | 68502 | 101689 | 2.32% | 0.217% |
| 84 | 19.825 | 2889 | 2891 | 2896 | rVB2 | 38405 | 44858 | 1.02% | 0.096% |
| 85 | 19.936 | 2904 | 2910 | 2916 | rBV | 3079347 | 4382698 | 100.00% | 9.335% |
| 86 | 21.464 | 3166 | 3170 | 3175 | rBV5 | 117804 | 210831 | 4.81% | 0.449% |
| 87 | 21.857 | 3230 | 3237 | 3245 | rVB | 2226031 | 3813518 | 87.01% | 8.122% |
| 88 | 25.001 | 3761 | 3772 | 3783 | rVB2 | 1340747 | 3999616 | 91.26% | 8.519% |
| 89 | 25.236 | 3801 | 3812 | 3823 | rVB3 | 1238372 | 3719933 | 84.88% | 7.923% |

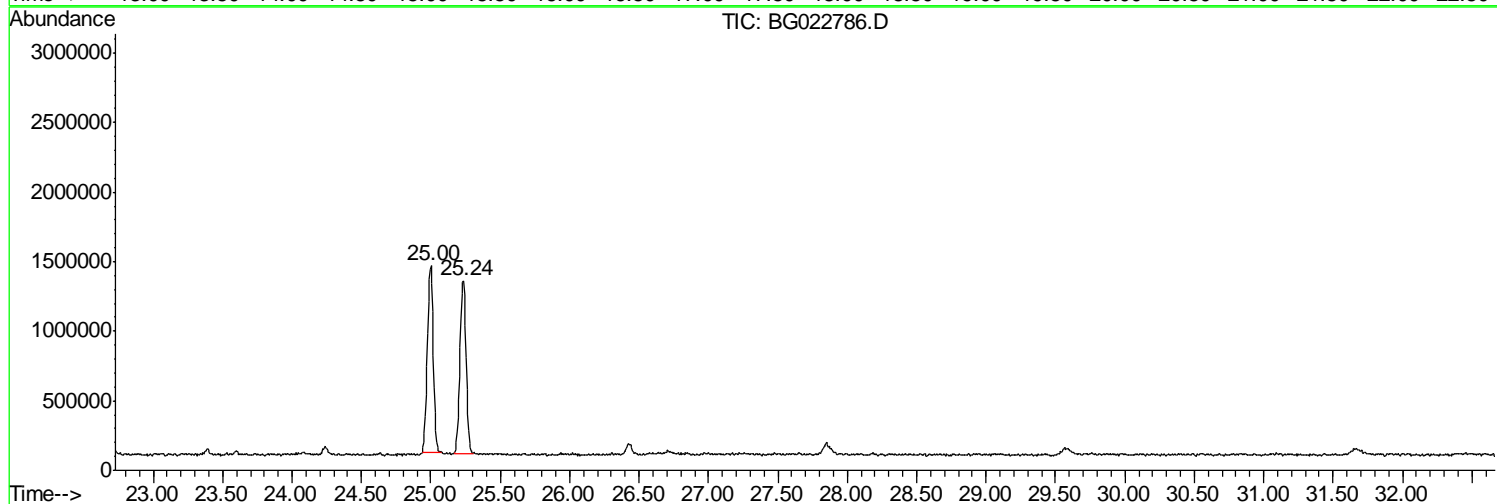
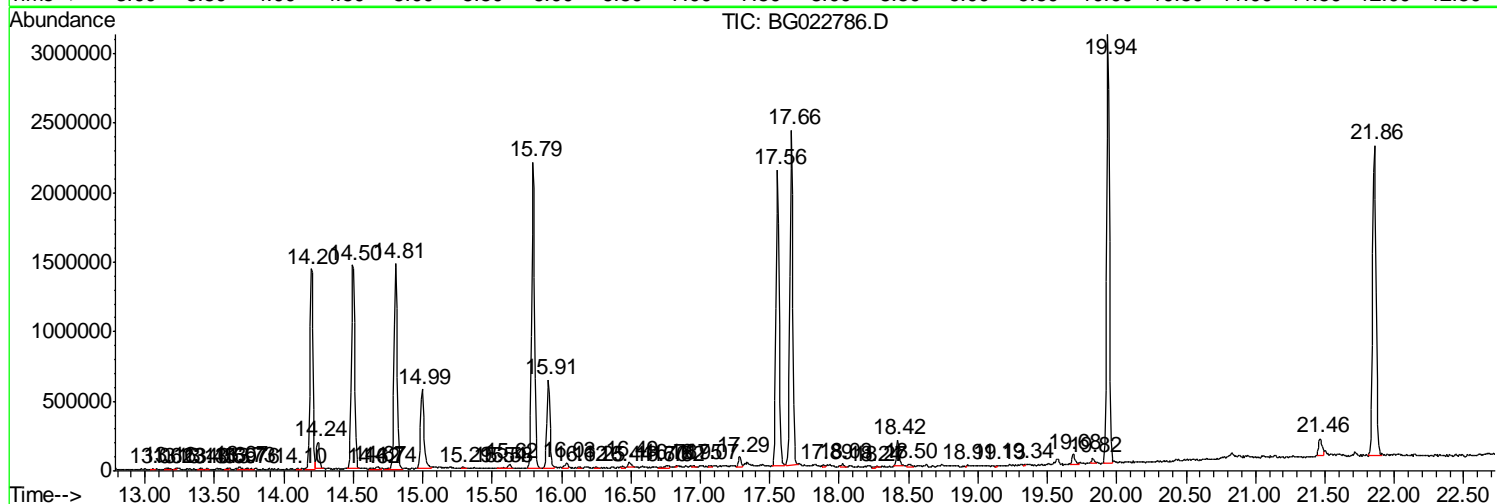
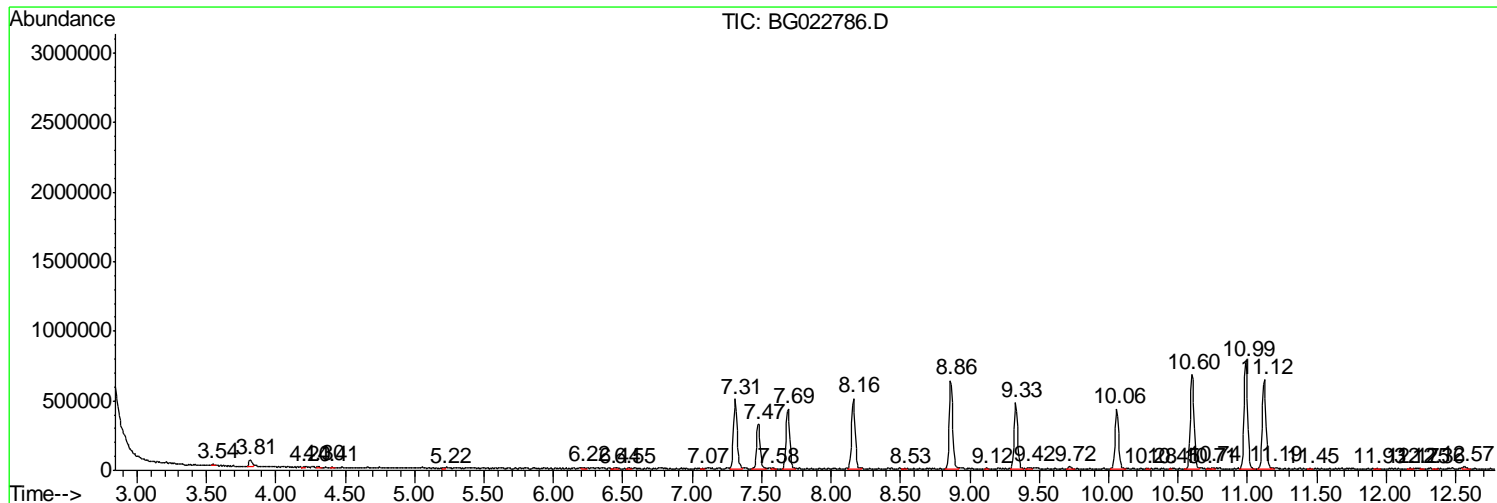
Sum of corrected areas: 46951067

Data Path : Z:\HPCHEM1\BNA_G\DATA\BG070116\
 Data File : BG022786.D
 Acq On : 2 Jul 2016 9:48
 Operator : UM/SJ
 Sample : H3752-13
 Misc :
 ALS Vial : 30 Sample Multiplier: 1

Instrument :
 BNA_G
ClientSampled :
 BDHM6

Quant Method : Z:\HPCHEM1\BNA_G\METHODS\SOM02.2-EPA-BG063016.M
 Quant Title : SVOA CALIBRATION

TIC Library : C:\DATABASE\NIST11.L
 TIC Integration Parameters: LSCINT.P



Data Path : Z:\HPCHEM1\BNA_G\DATA\BG070116\
Data File : BG022786.D
Acq On : 2 Jul 2016 9:48
Operator : UM/SJ
Sample : H3752-13
Misc :
ALS Vial : 30 Sample Multiplier: 1

Instrument :
BNA_G
ClientSampleId :
BDHM6

Quant Method : Z:\HPCHEM1\BNA_G\METHODS\SOM02.2-EPA-BG063016.M
Quant Title : SVOA CALIBRATION

TIC Library : C:\DATABASE\NIST11.L
TIC Integration Parameters: LSCINT.P

No Library Search Compounds Detected

Data Path : Z:\HPCHEM1\BNA_G\DATA\BG070116\
Data File : BG022786.D
Acq On : 2 Jul 2016 9:48
Operator : UM/SJ
Sample : H3752-13
Misc :
ALS Vial : 30 Sample Multiplier: 1

Instrument :
BNA_G
ClientSampleId :
BDHM6

Quant Method : Z:\HPCHEM1\BNA_G\METHODS\SOM02.2-EPA-BG063016.M
Quant Title : SVOA CALIBRATION

TIC Library : C:\DATABASE\NIST11.L
TIC Integration Parameters: LSCINT.P

| TIC Top Hit name | RT | EstConc | Units | Response | --Internal Standard-- | | | |
|------------------|----|---------|-------|----------|-----------------------|----|------|------|
| | | | | | # | RT | Resp | Conc |
