

Data Path : Z:\HPCHEM1\BNA_G\DATA\BG070116\
 Data File : BG022787.D
 Acq On : 2 Jul 2016 10:28
 Operator : UM/SJ
 Sample : H3752-14
 Misc :
 ALS Vial : 31 Sample Multiplier: 1

Instrument :
 BNA_G
 ClientSampleId :
 BDHN2

Integration Parameters: LSCINT.P

Integrator: RTE
 Smoothing : OFF
 Sampling : 1
 Start Thrs: 0.2
 Stop Thrs : 0

Filtering: 5
 Min Area: 0.1 % of largest Peak
 Max Peaks: 100
 Peak Location: TOP

If leading or trailing edge < 100 prefer < Baseline drop else tangent >
 Peak separation: 5

Method : Z:\HPCHEM1\BNA_G\METHODS\SOM02.2-EPA-BG063016.M
 Title : SVOA CALIBRATION

Signal : TIC

peak #	R.T. min	first scan	max scan	last scan	PK TY	peak height	corr. area	corr. % max.	% of total
1	3.231	65	67	72	rVB4	17496	20101	0.27%	0.023%
2	3.319	80	82	88	rVB5	12020	11577	0.15%	0.013%
3	3.813	163	166	172	rBV2	32309	53749	0.72%	0.063%
4	4.077	207	211	215	rBV3	25467	35192	0.47%	0.041%
5	4.306	246	250	252	rBV3	9975	14337	0.19%	0.017%
6	6.204	570	573	579	rVV7	9447	17165	0.23%	0.020%
7	6.780	669	671	675	rVB5	10347	11539	0.15%	0.013%
8	7.309	752	761	771	rBV	604705	1089106	14.57%	1.268%
9	7.479	783	790	799	rVB	410234	709497	9.49%	0.826%
10	7.691	819	826	834	rBV	519384	952284	12.74%	1.109%
11	8.161	899	906	918	rVB2	536885	983710	13.16%	1.145%
12	8.396	942	946	948	rBV5	7267	11725	0.16%	0.014%
13	8.866	1018	1026	1033	rBV	676462	1197675	16.02%	1.394%
14	8.995	1042	1048	1053	rBV3	19034	36321	0.49%	0.042%
15	9.330	1097	1105	1116	rBV	591265	1060621	14.19%	1.235%
16	9.718	1166	1171	1177	rVB5	17966	39537	0.53%	0.046%
17	10.059	1220	1229	1237	rBV2	532538	990528	13.25%	1.153%
18	10.605	1312	1322	1329	rBV	793352	1458759	19.51%	1.698%
19	10.987	1380	1387	1394	rBV	850428	1516052	20.28%	1.765%
20	11.122	1402	1410	1417	rBV	652866	1187010	15.88%	1.382%
21	12.450	1632	1636	1639	rBV6	10244	15816	0.21%	0.018%
22	12.562	1653	1655	1660	rVB3	20001	25131	0.34%	0.029%
23	12.855	1700	1705	1713	rVB3	26822	56014	0.75%	0.065%
24	13.143	1750	1754	1759	rBV6	9944	19233	0.26%	0.022%
25	13.396	1794	1797	1801	rVB5	14625	18947	0.25%	0.022%
26	13.678	1843	1845	1848	rVV3	10646	12871	0.17%	0.015%
27	13.966	1888	1894	1895	rBV4	26950	43674	0.58%	0.051%
28	14.124	1916	1921	1926	rBV3	40428	70892	0.95%	0.083%
29	14.201	1926	1934	1938	rVV	1610190	2451052	32.79%	2.853%
30	14.242	1938	1941	1949	rVB	234208	339741	4.54%	0.395%
31	14.359	1957	1961	1965	rBV3	29762	48643	0.65%	0.057%
32	14.500	1978	1985	1999	rBV	1594864	2718130	36.36%	3.164%
33	14.677	2012	2015	2021	rVB5	24571	31419	0.42%	0.037%
34	14.806	2027	2037	2043	rBV2	1490934	2489762	33.31%	2.898%

Data Path : Z:\HPCHEM1\BNA_G\DATA\BG070116\
 Data File : BG022787.D
 Acq On : 2 Jul 2016 10:28
 Operator : UM/SJ
 Sample : H3752-14
 Misc :
 ALS Vial : 31 Sample Multiplier: 1

Instrument :
 BNA_G
 ClientSampleId :
 BDHN2

Integration Parameters: LSCINT.P

Integrator: RTE
 Smoothing : OFF
 Sampling : 1
 Start Thrs: 0.2
 Stop Thrs : 0

Filtering: 5
 Min Area: 0.1 % of largest Peak
 Max Peaks: 100
 Peak Location: TOP

If leading or trailing edge < 100 prefer < Baseline drop else tangent >
 Peak separation: 5

Method : Z:\HPCHEM1\BNA_G\METHODS\SOM02.2-EPA-BG063016.M
 Title : SVOA CALIBRATION

35	14.865	2043	2047	2055	rVB	317011	505015	6.76%	0.588%
36	14.994	2063	2069	2080	rBV	690158	1151033	15.40%	1.340%
37	15.200	2098	2104	2110	rVB	160476	256157	3.43%	0.298%
38	15.276	2113	2117	2123	rVB5	30395	46975	0.63%	0.055%
39	15.411	2136	2140	2145	rBV4	24305	40258	0.54%	0.047%
40	15.470	2147	2150	2154	rVB6	25666	31512	0.42%	0.037%
41	15.587	2167	2170	2173	rBV5	15631	18797	0.25%	0.022%
42	15.623	2173	2176	2181	rVB6	46474	66968	0.90%	0.078%
43	15.681	2181	2186	2187	rBV4	16654	19625	0.26%	0.023%
44	15.793	2199	2205	2211	rBV	2394929	3618999	48.41%	4.213%
45	15.846	2211	2214	2219	rVV2	242286	367075	4.91%	0.427%
46	15.905	2219	2224	2233	rVV	695252	1043126	13.95%	1.214%
47	16.016	2239	2243	2248	rBV7	26843	58813	0.79%	0.068%
48	16.104	2255	2258	2259	rBV3	21115	22573	0.30%	0.026%
49	16.146	2260	2265	2270	rVB	97391	140640	1.88%	0.164%
50	16.287	2280	2289	2298	rBV4	106084	299657	4.01%	0.349%
51	16.381	2300	2305	2310	rVB7	41288	77632	1.04%	0.090%
52	16.439	2310	2315	2319	rBV8	19391	38549	0.52%	0.045%
53	16.486	2319	2323	2326	rBV5	48847	73934	0.99%	0.086%
54	16.645	2347	2350	2353	rBV5	28369	35476	0.47%	0.041%
55	16.851	2378	2385	2390	rBV4	102279	211598	2.83%	0.246%
56	16.898	2391	2393	2399	rVV4	25016	42593	0.57%	0.050%
57	17.003	2407	2411	2416	rVB4	71230	112053	1.50%	0.130%
58	17.080	2418	2424	2427	rBV7	75649	137745	1.84%	0.160%
59	17.280	2453	2458	2462	rBV3	124600	197842	2.65%	0.230%
60	17.374	2470	2474	2480	rVB	139767	200867	2.69%	0.234%
61	17.556	2499	2505	2509	rBV2	2067155	3334926	44.61%	3.882%
62	17.603	2509	2513	2517	rVB	1499223	2198981	29.42%	2.560%
63	17.656	2517	2522	2526	rBV2	2408533	3750517	50.17%	4.366%
64	17.820	2548	2550	2551	rBV2	22632	16732	0.22%	0.019%
65	17.961	2570	2574	2582	rVB4	46420	90866	1.22%	0.106%
66	18.079	2589	2594	2601	rBV3	60158	101985	1.36%	0.119%
67	18.143	2601	2605	2610	rVB5	51079	75563	1.01%	0.088%
68	18.284	2624	2629	2636	rVB6	36373	80541	1.08%	0.094%
69	18.425	2648	2653	2658	rBV2	460907	774426	10.36%	0.901%
70	18.478	2658	2662	2669	rVB	261952	396572	5.30%	0.462%
71	18.560	2672	2676	2681	rVB	146943	216642	2.90%	0.252%

Data Path : Z:\HPCHEM1\BNA_G\DATA\BG070116\
 Data File : BG022787.D
 Acq On : 2 Jul 2016 10:28
 Operator : UM/SJ
 Sample : H3752-14
 Misc :
 ALS Vial : 31 Sample Multiplier: 1

Instrument :
 BNA_G
 ClientSampleId :
 BDHN2

Integration Parameters: LSCINT.P

Integrator: RTE
 Smoothing : OFF
 Sampling : 1
 Start Thrs: 0.2
 Stop Thrs : 0

Filtering: 5
 Min Area: 0.1 % of largest Peak
 Max Peaks: 100
 Peak Location: TOP

If leading or trailing edge < 100 prefer < Baseline drop else tangent >
 Peak separation: 5

Method : Z:\HPCHEM1\BNA_G\METHODS\SOM02.2-EPA-BG063016.M
 Title : SVOA CALIBRATION

72	18.631	2681	2688	2692	rBV	797079	1329610	17.79%	1.548%
73	18.925	2734	2738	2743	rBV	227902	323377	4.33%	0.376%
74	19.166	2776	2779	2783	rVB6	53003	72471	0.97%	0.084%
75	19.218	2785	2788	2791	rBV2	64133	72251	0.97%	0.084%
76	19.342	2804	2809	2813	rBV2	125458	229869	3.07%	0.268%
77	19.483	2829	2833	2834	rBV3	44057	60187	0.81%	0.070%
78	19.606	2848	2854	2860	rVB	4102755	6127644	81.97%	7.133%
79	19.688	2865	2868	2874	rVB4	117996	179731	2.40%	0.209%
80	19.753	2874	2879	2884	rBV	233680	341975	4.57%	0.398%
81	19.941	2904	2911	2913	rBV2	3534948	5887992	78.76%	6.854%
82	19.965	2913	2915	2922	rVV	3083831	4259231	56.98%	4.958%
83	20.029	2923	2926	2934	rVB2	163949	240839	3.22%	0.280%
84	20.141	2941	2945	2950	rVB	232563	312352	4.18%	0.364%
85	20.276	2963	2968	2976	rBV3	230015	571172	7.64%	0.665%
86	20.341	2976	2979	2984	rVV	75077	122190	1.63%	0.142%
87	20.452	2988	2998	3004	rVB	824755	1506419	20.15%	1.754%
88	20.552	3010	3015	3019	rBV2	872844	1189809	15.92%	1.385%
89	20.752	3046	3049	3052	rBV	102207	130168	1.74%	0.152%
90	21.181	3118	3122	3127	rBV2	95521	156965	2.10%	0.183%
91	21.422	3159	3163	3166	rBV	268332	370524	4.96%	0.431%
92	21.469	3167	3171	3175	rVB2	295399	435046	5.82%	0.506%
93	21.857	3228	3237	3242	rBV2	2870629	7475489	100.00%	8.702%
94	21.909	3242	3246	3252	rVB	1401377	2343815	31.35%	2.728%
95	22.068	3269	3273	3278	rVB2	197542	323121	4.32%	0.376%
96	22.285	3305	3310	3316	rVB3	183273	397778	5.32%	0.463%
97	24.160	3620	3629	3637	rBV2	890691	3244643	43.40%	3.777%
98	24.918	3751	3758	3764	rBV2	472606	1306227	17.47%	1.521%
99	25.006	3765	3773	3779	rVV2	1316475	3411627	45.64%	3.971%
100	25.235	3802	3812	3821	rBV2	1272051	3891200	52.05%	4.530%

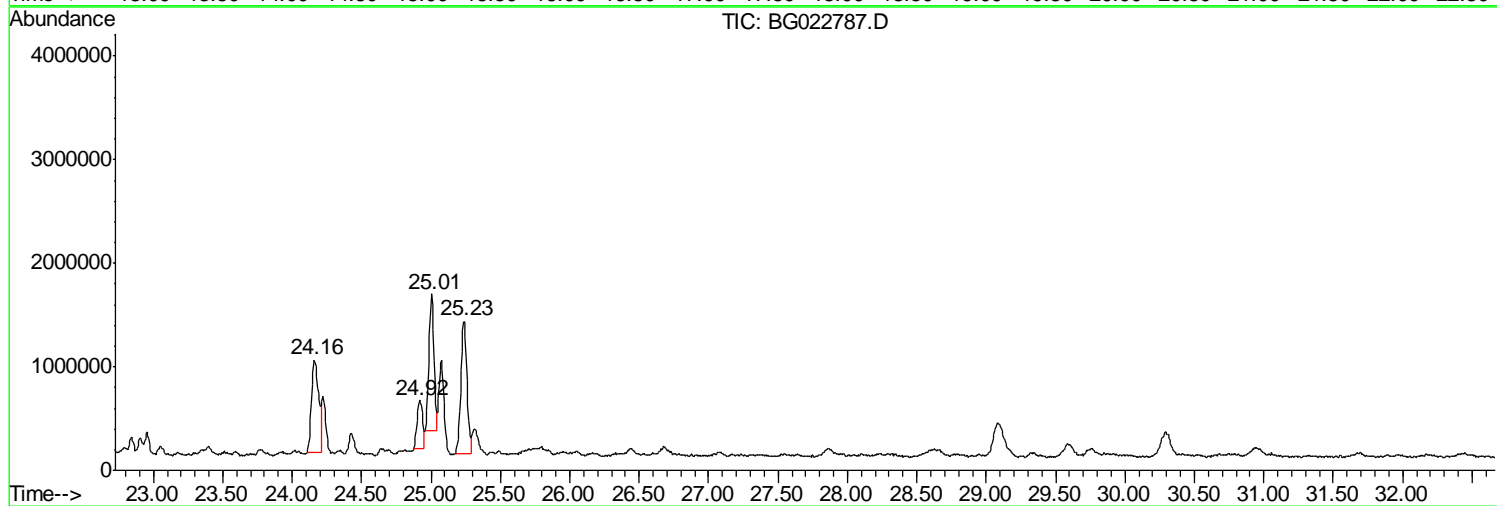
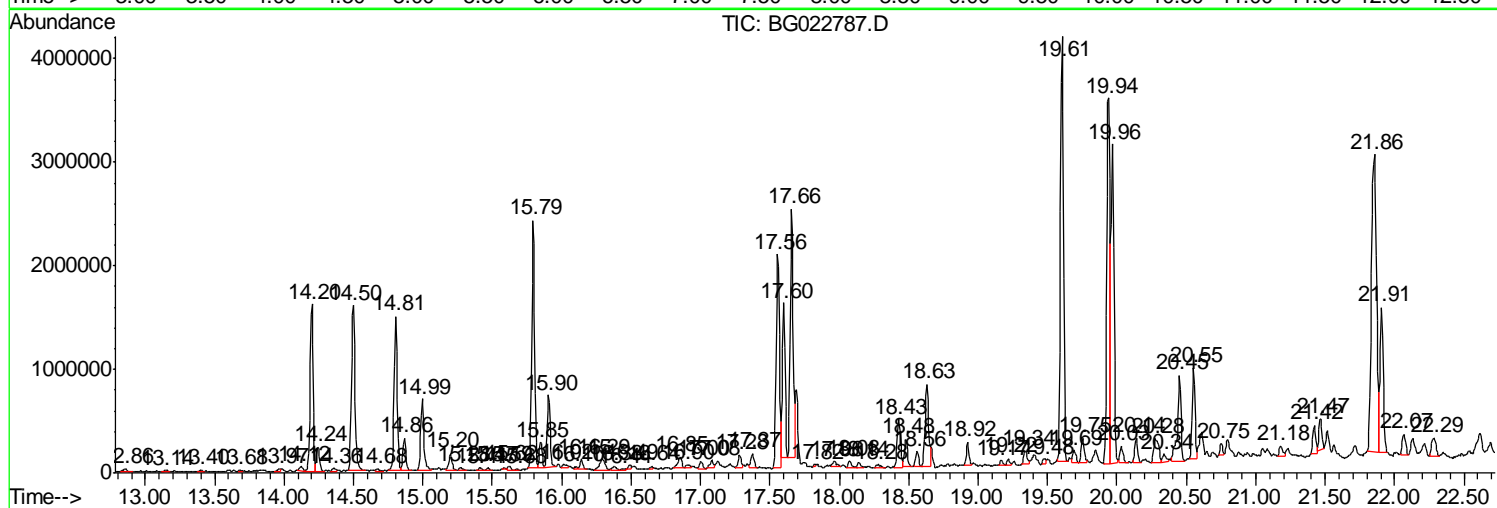
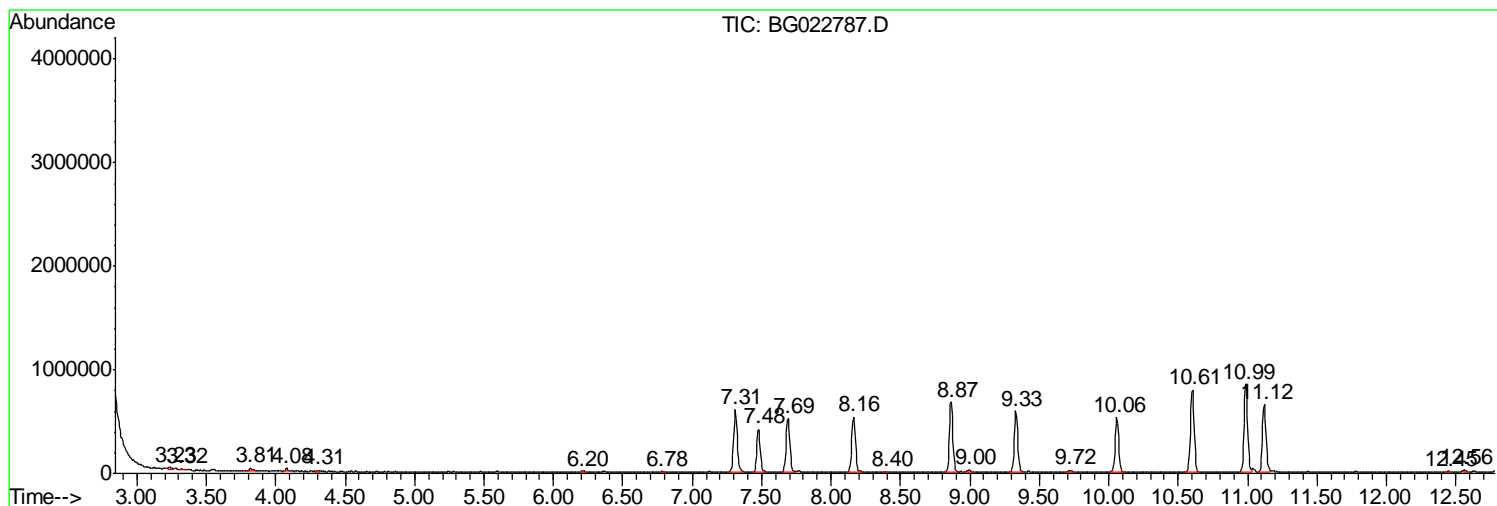
Sum of corrected areas: 85904795

Data Path : Z:\HPCHEM1\BNA_G\DATA\BG070116\
 Data File : BG022787.D
 Acq On : 2 Jul 2016 10:28
 Operator : UM/SJ
 Sample : H3752-14
 Misc :
 ALS Vial : 31 Sample Multiplier: 1

Instrument :
 BNA_G
 ClientSampleId :
 BDHN2

Quant Method : Z:\HPCHEM1\BNA_G\METHODS\SOM02.2-EPA-BG063016.M
 Quant Title : SVOA CALIBRATION

TIC Library : C:\DATABASE\NIST11.L
 TIC Integration Parameters: LSCINT.P



Data Path : Z:\HPCHEM1\BNA_G\DATA\BG070116\
 Data File : BG022787.D
 Acq On : 2 Jul 2016 10:28
 Operator : UM/SJ
 Sample : H3752-14
 Misc :
 ALS Vial : 31 Sample Multiplier: 1

Instrument :
 BNA_G
 ClientSampled :
 BDHN2

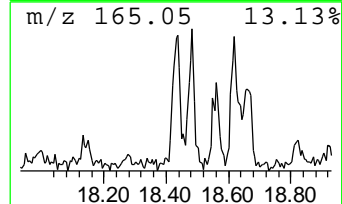
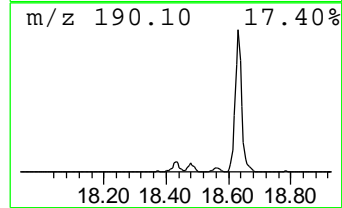
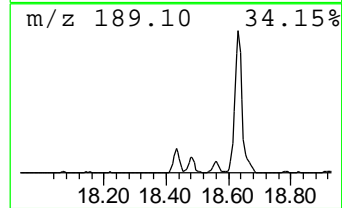
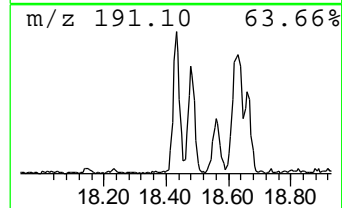
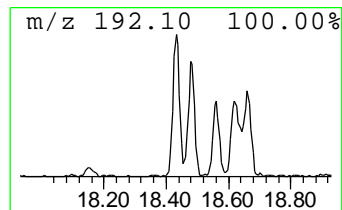
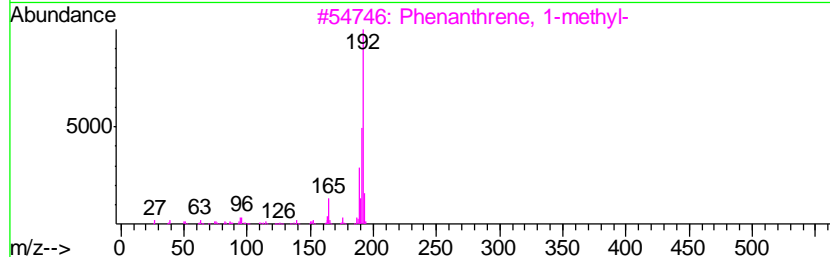
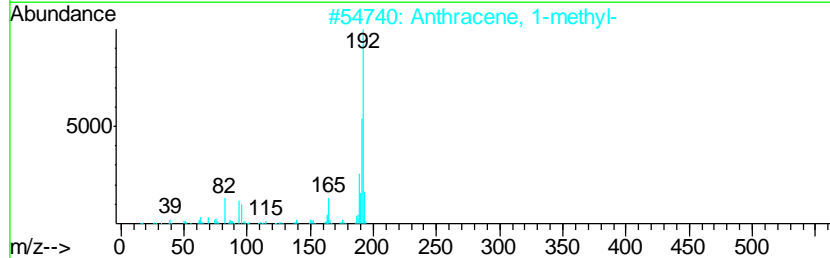
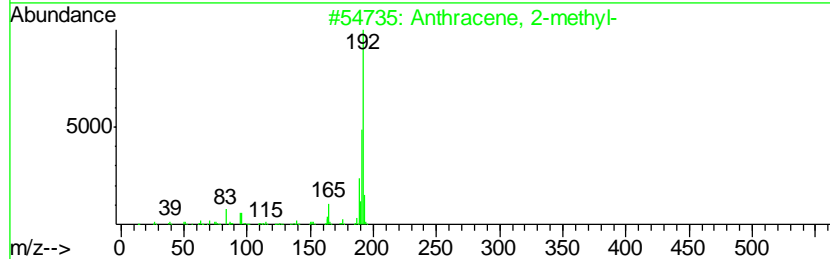
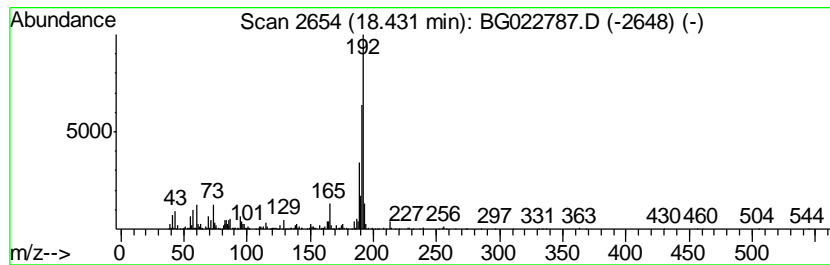
Quant Method : Z:\HPCHEM1\BNA_G\METHODS\SOM02.2-EPA-BG063016.M
 Quant Title : SVOA CALIBRATION

TIC Library : C:\DATABASE\NIST11.L
 TIC Integration Parameters: LSCINT.P

 Peak Number 1 Anthracene, 2-methyl- Concentration Rank 3

R.T.	EstConc	Area	Relative to ISTD	R.T.
18.43	4.64 ng/ul	774426	Phenanthrene-d10	17.56

Hit#	of	Tentative ID	MW	MolForm	CAS#	Qual
1	5	Anthracene, 2-methyl-	192	C15H12	000613-12-7	83
2		Anthracene, 1-methyl-	192	C15H12	000610-48-0	83
3		Phenanthrene, 1-methyl-	192	C15H12	000832-69-9	83
4		Anthracene, 1-methyl-	192	C15H12	000610-48-0	83
5		Anthracene, 2-methyl-	192	C15H12	000613-12-7	76



Data Path : Z:\HPCHEM1\BNA_G\DATA\BG070116\
 Data File : BG022787.D
 Acq On : 2 Jul 2016 10:28
 Operator : UM/SJ
 Sample : H3752-14
 Misc :
 ALS Vial : 31 Sample Multiplier: 1

Instrument :
 BNA_G
 ClientSampled :
 BDHN2

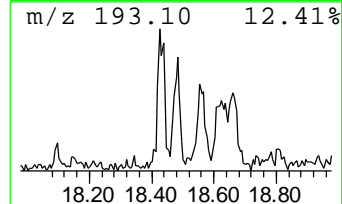
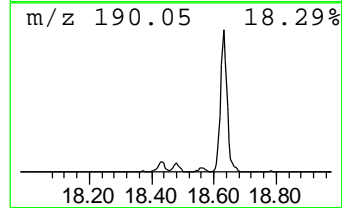
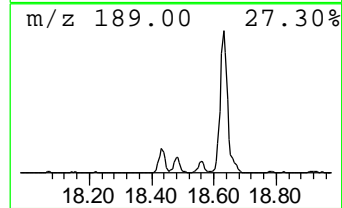
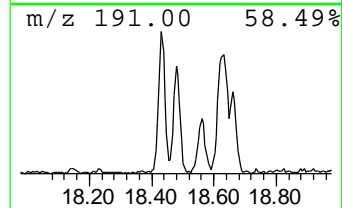
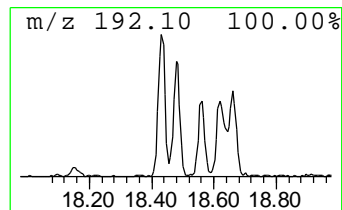
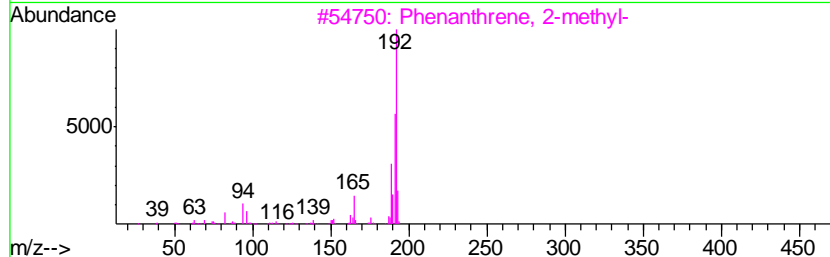
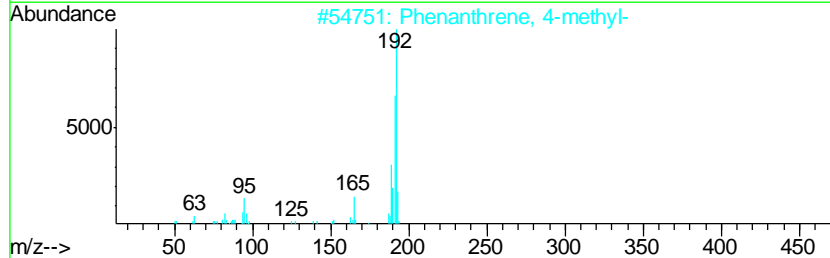
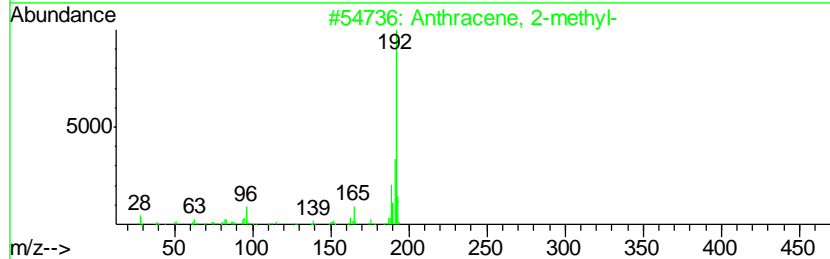
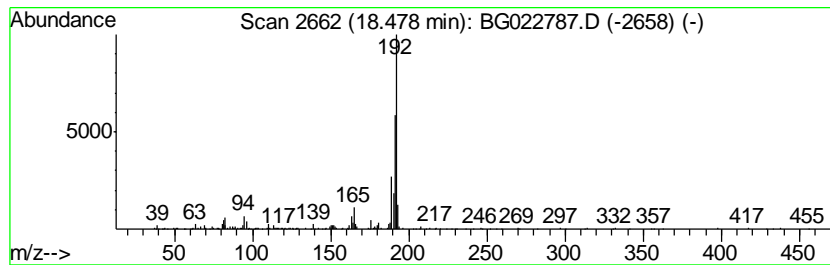
Quant Method : Z:\HPCHEM1\BNA_G\METHODS\SOM02.2-EPA-BG063016.M
 Quant Title : SVOA CALIBRATION

TIC Library : C:\DATABASE\NIST11.L
 TIC Integration Parameters: LSCINT.P

 Peak Number 2 Phenanthrene, 4-methyl- Concentration Rank 6

R.T.	EstConc	Area	Relative to ISTD	R.T.
18.48	2.38 ng/ul	396572	Phenanthrene-d10	17.56

Hit#	of	Tentative ID	MW	MolForm	CAS#	Qual
1	5	Anthracene, 2-methyl-	192	C15H12	000613-12-7	94
2		Phenanthrene, 4-methyl-	192	C15H12	000832-64-4	94
3		Phenanthrene, 2-methyl-	192	C15H12	002531-84-2	93
4		Phenanthrene, 1-methyl-	192	C15H12	000832-69-9	93
5		Anthracene, 2-methyl-	192	C15H12	000613-12-7	90



Data Path : Z:\HPCHEM1\BNA_G\DATA\BG070116\
 Data File : BG022787.D
 Acq On : 2 Jul 2016 10:28
 Operator : UM/SJ
 Sample : H3752-14
 Misc :
 ALS Vial : 31 Sample Multiplier: 1

Instrument :
 BNA_G
 ClientSampled :
 BDHN2

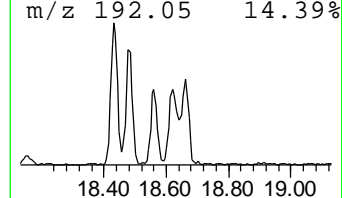
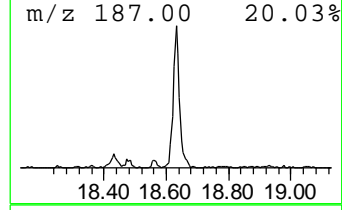
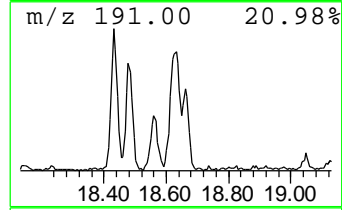
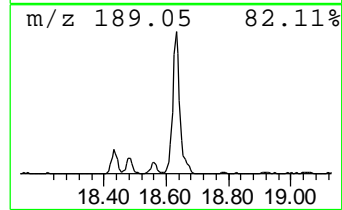
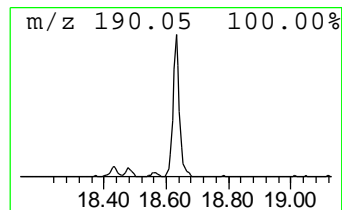
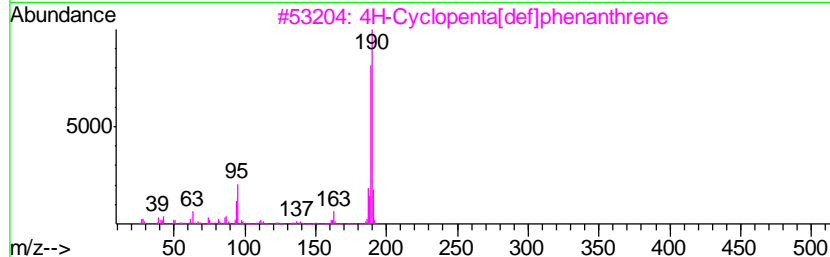
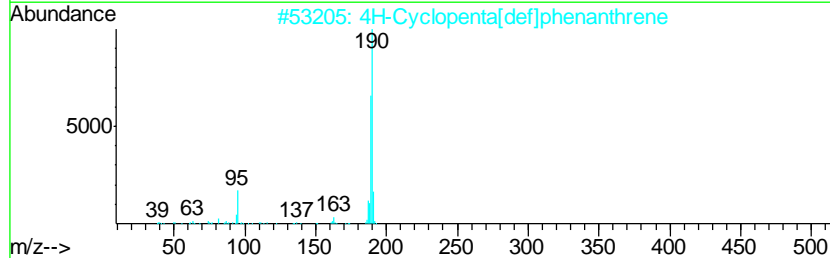
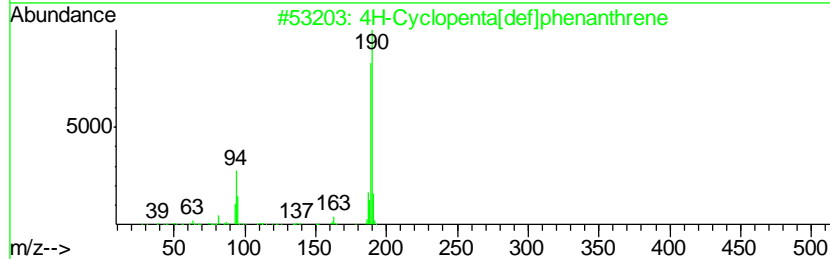
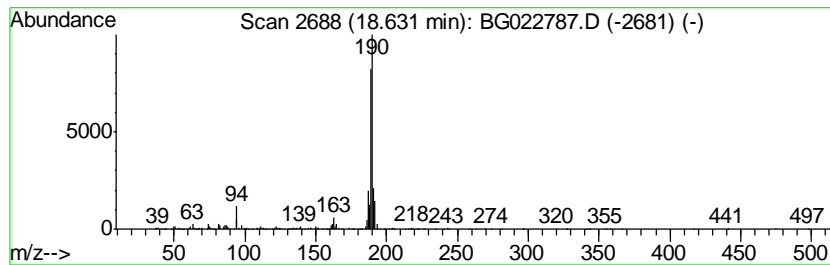
Quant Method : Z:\HPCHEM1\BNA_G\METHODS\SOM02.2-EPA-BG063016.M
 Quant Title : SVOA CALIBRATION

TIC Library : C:\DATABASE\NIST11.L
 TIC Integration Parameters: LSCINT.P

 Peak Number 3 4H-Cyclopenta[def]phenanthrene Concentration Rank 1

R.T.	EstConc	Area	Relative to ISTD	R.T.
18.63	7.97 ng/ul	1329610	Phenanthrene-d10	17.56

Hit#	of	Tentative ID	MW	MolForm	CAS#	Qual
1	5	4H-Cyclopenta[def]phenanthrene	190	C15H10	000203-64-5	93
2		4H-Cyclopenta[def]phenanthrene	190	C15H10	000203-64-5	90
3		4H-Cyclopenta[def]phenanthrene	190	C15H10	000203-64-5	87
4		Phenol, 4-(2-thienylmethyl)-	190	C11H10OS	091680-55-6	64
5		2,2'-Bis(4,5-dimethylimidazole)	190	C10H14N4	069286-06-2	45



Data Path : Z:\HPCHEM1\BNA_G\DATA\BG070116\
 Data File : BG022787.D
 Acq On : 2 Jul 2016 10:28
 Operator : UM/SJ
 Sample : H3752-14
 Misc :
 ALS Vial : 31 Sample Multiplier: 1

Instrument :
 BNA_G
 ClientSampleId :
 BDHN2

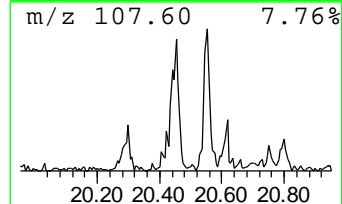
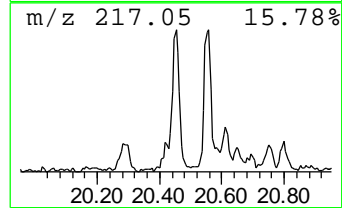
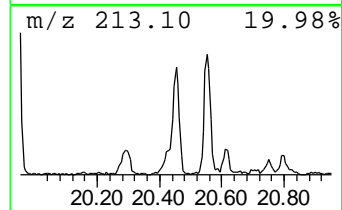
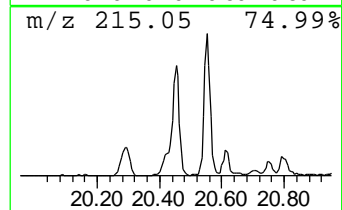
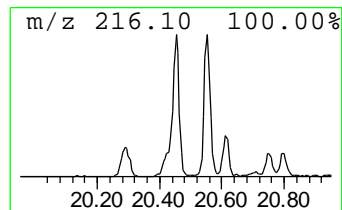
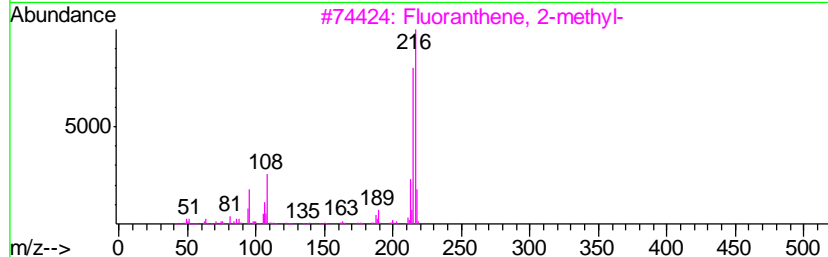
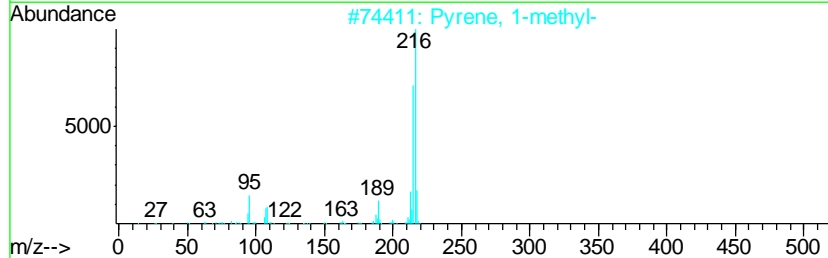
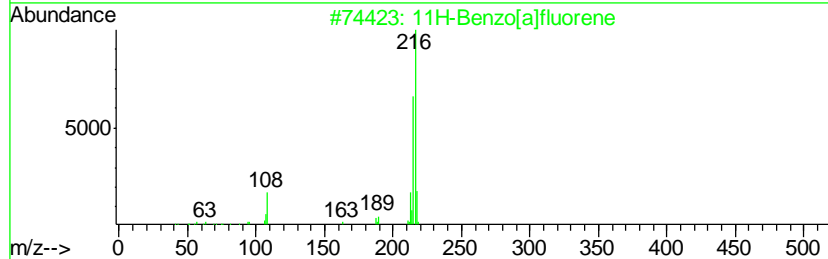
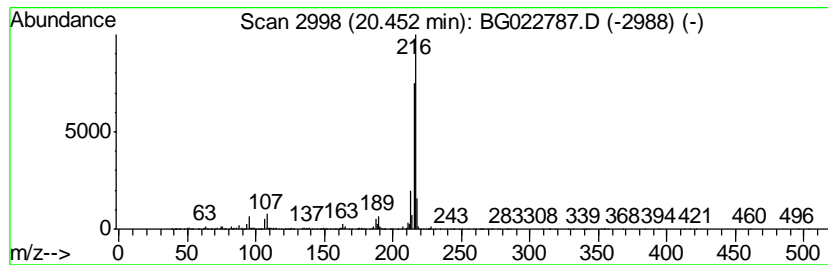
Quant Method : Z:\HPCHEM1\BNA_G\METHODS\SOM02.2-EPA-BG063016.M
 Quant Title : SVOA CALIBRATION

TIC Library : C:\DATABASE\NIST11.L
 TIC Integration Parameters: LSCINT.P

 Peak Number 4 11H-Benzo[a]fluorene Concentration Rank 4

R.T.	EstConc	Area	Relative to ISTD	R.T.
20.45	4.03 ng/ul	1506420	Chrysene-d12	21.86

Hit#	of	Tentative ID	MW	MolForm	CAS#	Qual
1	5	11H-Benzo[a]fluorene	216	C17H12	000238-84-6	94
2		Pyrene, 1-methyl-	216	C17H12	002381-21-7	94
3		Fluoranthene, 2-methyl-	216	C17H12	033543-31-6	93
4		11H-Benzo[a]fluorene	216	C17H12	000238-84-6	91
5		11H-Benzo[b]fluorene	216	C17H12	000243-17-4	91



Data Path : Z:\HPCHEM1\BNA_G\DATA\BG070116\
 Data File : BG022787.D
 Acq On : 2 Jul 2016 10:28
 Operator : UM/SJ
 Sample : H3752-14
 Misc :
 ALS Vial : 31 Sample Multiplier: 1

Instrument :
 BNA_G
 ClientSampled :
 BDHN2

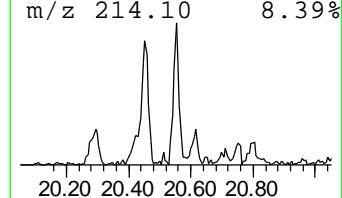
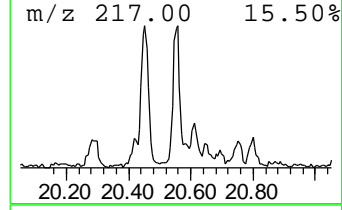
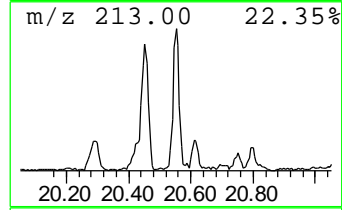
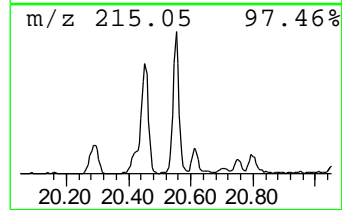
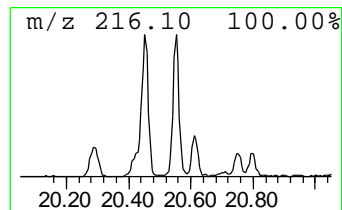
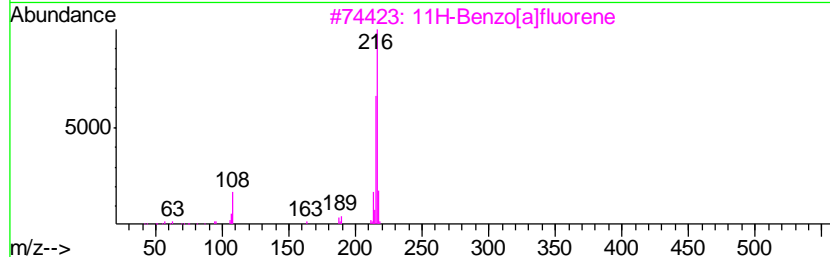
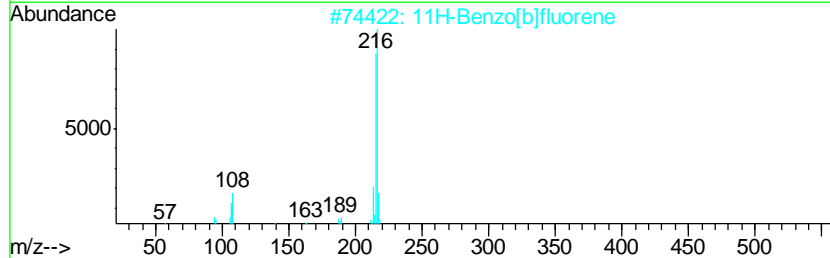
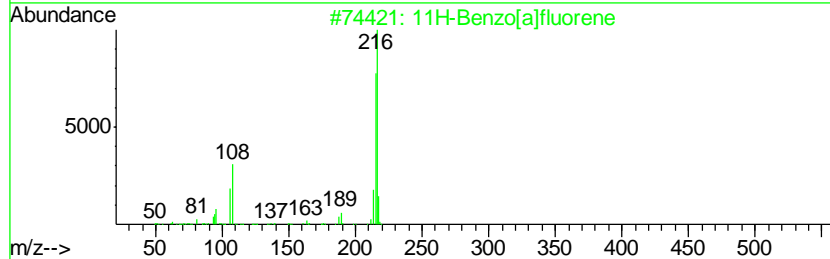
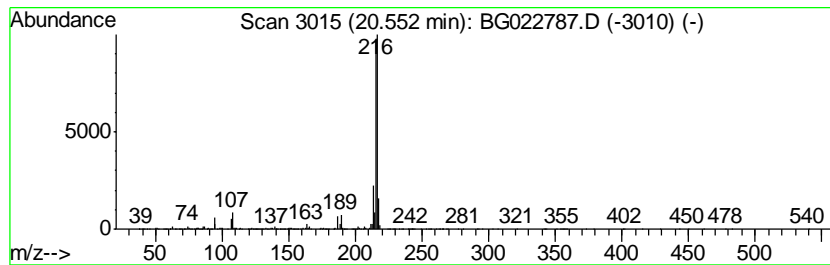
Quant Method : Z:\HPCHEM1\BNA_G\METHODS\SOM02.2-EPA-BG063016.M
 Quant Title : SVOA CALIBRATION

TIC Library : C:\DATABASE\NIST11.L
 TIC Integration Parameters: LSCINT.P

 Peak Number 5 11H-Benzo[b]fluorene Concentration Rank 5

R.T.	EstConc	Area	Relative to ISTD	R.T.
20.55	3.18 ng/ul	1189810	Chrysene-d12	21.86

Hit#	of	Tentative ID	MW	MolForm	CAS#	Qual
1	5	11H-Benzo[a]fluorene	216	C17H12	000238-84-6	93
2		11H-Benzo[b]fluorene	216	C17H12	000243-17-4	93
3		11H-Benzo[a]fluorene	216	C17H12	000238-84-6	70
4		Fluoranthene, 2-methyl-	216	C17H12	033543-31-6	70
5		11H-Benzo[b]fluorene	216	C17H12	000243-17-4	64



Data Path : Z:\HPCHEM1\BNA_G\DATA\BG070116\
Data File : BG022787.D
Acq On : 2 Jul 2016 10:28
Operator : UM/SJ
Sample : H3752-14
Misc :
ALS Vial : 31 Sample Multiplier: 1

Instrument :
BNA_G
ClientSampleId :
BDHN2

Quant Method : Z:\HPCHEM1\BNA_G\METHODS\SOM02.2-EPA-BG063016.M
Quant Title : SVOA CALIBRATION

TIC Library : C:\DATABASE\NIST11.L
TIC Integration Parameters: LSCINT.P

TIC Top Hit name	RT	EstConc	Units	Response	--Internal Standard--			
					#	RT	Resp	Conc
Anthracene, 2-met...	18.43	4.6	ng/ul	774426	4	17.56	3334930	20.0
Phenanthrene, 4-m...	18.48	2.4	ng/ul	396572	4	17.56	3334930	20.0
4H-Cyclopenta[def...	18.63	8.0	ng/ul	1329610	4	17.56	3334930	20.0
11H-Benzo[a]fluorene	20.45	4.0	ng/ul	1506420	5	21.86	7475490	20.0
11H-Benzo[b]fluorene	20.55	3.2	ng/ul	1189810	5	21.86	7475490	20.0