

Data Path : Z:\svoasrv\HPCHEM1\BNA_G\Data\BG070124\
 Data File : BG061843.D
 Acq On : 2 Jul 2024 12:23
 Operator : MA/JU
 Sample : P2963-11
 Misc :
 ALS Vial : 40 Sample Multiplier: 1

Instrument :
 BNA_G
 ClientSampleId :
 A4CR5

Integration Parameters: LSCINT.P

Integrator: RTE
 Smoothing : OFF Filtering: 5
 Sampling : 1 Min Area: 0.1 % of largest Peak
 Start Thrs: 0.2 Max Peaks: 100
 Stop Thrs : 0 Peak Location: TOP

If leading or trailing edge < 100 prefer < Baseline drop else tangent >
 Peak separation: 5

Method : Z:\svoasrv\HPCHEM1\BNA_G\Methods\SFAM-EPA-BG062024.MA.M
 Title : SVOA CALIBRATION

Signal : TIC: BG061843.D\data.ms

peak #	R.T. min	first scan	max scan	last scan	PK TY	peak height	corr. area	corr. % max.	% of total
1	3.460	25	29	35	rVB2	15556	24044	1.33%	0.097%
2	3.736	72	76	80	rBV	10490	16568	0.92%	0.067%
3	3.895	98	103	109	rBV2	20697	34812	1.93%	0.141%
4	3.995	116	120	126	rVB	42319	66643	3.69%	0.270%
5	4.065	130	132	137	rVB4	8877	10073	0.56%	0.041%
6	4.148	143	146	149	rBV3	3656	4424	0.25%	0.018%
7	4.212	155	157	162	rVB3	9157	12213	0.68%	0.049%
8	4.371	180	184	191	rVB4	5496	8743	0.48%	0.035%
9	4.729	239	245	248	rBV5	7705	12617	0.70%	0.051%
10	4.776	248	253	259	rVV3	23865	42127	2.33%	0.171%
11	4.823	259	261	263	rVB3	6422	4769	0.26%	0.019%
12	4.970	283	286	290	rVB5	3275	4456	0.25%	0.018%
13	5.029	292	296	298	rBV3	4658	6220	0.34%	0.025%
14	5.135	308	314	322	rBV2	62992	107554	5.96%	0.436%
15	5.229	326	330	337	rVB4	14243	27574	1.53%	0.112%
16	6.057	465	471	472	rBV4	5921	7711	0.43%	0.031%
17	6.122	475	482	486	rVB3	11691	23691	1.31%	0.096%
18	6.410	529	531	536	rBV4	3081	4626	0.26%	0.019%
19	6.909	612	616	620	rVB4	3954	6385	0.35%	0.026%
20	7.027	627	636	642	rBV8	10438	32182	1.78%	0.130%
21	7.215	660	668	680	rBV	418518	764672	42.35%	3.098%
22	7.379	690	696	704	rVB	291693	476908	26.41%	1.932%
23	7.591	723	732	738	rBV	411953	701623	38.86%	2.843%
24	8.061	803	812	817	rVV	270172	480293	26.60%	1.946%
25	8.108	817	820	824	rVB3	12939	18952	1.05%	0.077%
26	8.354	859	862	865	rVB5	3791	5370	0.30%	0.022%
27	8.619	905	907	909	rBV3	4099	4838	0.27%	0.020%
28	8.766	923	932	939	rBV	472470	822144	45.53%	3.331%
29	8.877	948	951	958	rVB	27782	47664	2.64%	0.193%
30	9.224	1001	1010	1016	rBV2	397129	718219	39.78%	2.910%
31	9.330	1025	1028	1032	rVB3	4504	5228	0.29%	0.021%
32	9.365	1032	1034	1035	rBV	8523	6800	0.38%	0.028%
33	9.553	1063	1066	1068	rBV2	3826	4407	0.24%	0.018%
34	9.606	1070	1075	1079	rVV2	8010	11893	0.66%	0.048%
35	9.770	1097	1103	1109	rBV	48763	76271	4.22%	0.309%
36	9.947	1126	1133	1143	rVB	356988	636545	35.25%	2.579%

Data Path : Z:\svoasrv\HPCHEM1\BNA_G\Data\BG070124\
 Data File : BG061843.D
 Acq On : 2 Jul 2024 12:23
 Operator : MA/JU
 Sample : P2963-11
 Misc :
 ALS Vial : 40 Sample Multiplier: 1

Instrument :
 BNA_G
 ClientSampleId :
 A4CR5

Integration Parameters: LSCINT.P

Integrator: RTE
 Smoothing : OFF
 Sampling : 1
 Start Thrs: 0.2
 Stop Thrs : 0

Filtering: 5
 Min Area: 0.1 % of largest Peak
 Max Peaks: 100
 Peak Location: TOP

If leading or trailing edge < 100 prefer < Baseline drop else tangent >
 Peak separation: 5

Method : Z:\svoasrv\HPCHEM1\BNA_G\Methods\SFAM-EPA-BG062024.MA.M
 Title : SVOA CALIBRATION

37	10.088	1155	1157	1162	rVB5	4946	7744	0.43%	0.031%
38	10.170	1167	1171	1175	rVB6	6698	10422	0.58%	0.042%
39	10.276	1183	1189	1191	rBV4	5652	6550	0.36%	0.027%
40	10.370	1202	1205	1208	rBV2	3865	6213	0.34%	0.025%
41	10.429	1212	1215	1218	rVV5	2743	4203	0.23%	0.017%
42	10.487	1218	1225	1233	rVV	511060	915513	50.70%	3.710%
43	10.634	1246	1250	1251	rBV3	4105	5688	0.32%	0.023%
44	10.705	1258	1262	1267	rBV6	3448	6266	0.35%	0.025%
45	10.828	1277	1283	1284	rBV3	10385	17142	0.95%	0.069%
46	10.869	1284	1290	1297	rVV	403487	722584	40.02%	2.928%
47	10.922	1297	1299	1305	rVB3	15451	21077	1.17%	0.085%
48	11.004	1305	1313	1320	rBV4	35218	77614	4.30%	0.314%
49	11.286	1357	1361	1364	rVB4	4849	7477	0.41%	0.030%
50	11.386	1374	1378	1383	rVV4	23730	33227	1.84%	0.135%
51	11.604	1409	1415	1420	rBV2	68484	122730	6.80%	0.497%
52	11.868	1458	1460	1462	rBV3	5506	4224	0.23%	0.017%
53	11.986	1479	1480	1485	rBV3	4311	5548	0.31%	0.022%
54	12.056	1489	1492	1493	rVV2	4163	4446	0.25%	0.018%
55	12.273	1523	1529	1532	rVB4	10803	15728	0.87%	0.064%
56	12.344	1537	1541	1544	rBV4	4054	7297	0.40%	0.030%
57	12.403	1548	1551	1553	rBV2	5255	5591	0.31%	0.023%
58	12.444	1555	1558	1563	rVB5	8953	12789	0.71%	0.052%
59	12.520	1568	1571	1576	rVB2	11439	16344	0.91%	0.066%
60	12.738	1603	1608	1613	rBV5	5282	9376	0.52%	0.038%
61	12.855	1626	1628	1631	rBV2	3410	5568	0.31%	0.023%
62	13.413	1720	1723	1724	rBV2	6390	5234	0.29%	0.021%
63	13.501	1735	1738	1744	rVB3	16614	22020	1.22%	0.089%
64	13.860	1797	1799	1804	rVB6	9883	12254	0.68%	0.050%
65	14.013	1819	1825	1828	rBV6	12756	20827	1.15%	0.084%
66	14.089	1830	1838	1846	rVV	858859	1256943	69.61%	5.093%
67	14.148	1846	1848	1853	rVB4	8189	13552	0.75%	0.055%
68	14.201	1853	1857	1861	rBV5	4508	7210	0.40%	0.029%
69	14.318	1874	1877	1882	rBV5	14181	25673	1.42%	0.104%
70	14.383	1882	1888	1898	rVV	913293	1459898	80.85%	5.915%
71	14.518	1908	1911	1912	rBV3	7110	7280	0.40%	0.029%
72	14.565	1917	1919	1923	rVB5	16163	22164	1.23%	0.090%
73	14.688	1930	1940	1947	rBV	575171	921188	51.02%	3.733%
74	14.747	1947	1950	1953	rBV2	15558	21614	1.20%	0.088%
75	14.882	1967	1973	1984	rBV2	363284	619703	34.32%	2.511%
76	14.988	1989	1991	1993	rVV3	9221	8010	0.44%	0.032%

Data Path : Z:\svoasrv\HPCHEM1\BNA_G\Data\BG070124\
 Data File : BG061843.D
 Acq On : 2 Jul 2024 12:23
 Operator : MA/JU
 Sample : P2963-11
 Misc :
 ALS Vial : 40 Sample Multiplier: 1

Instrument :
 BNA_G
 ClientSampleId :
 A4CR5

Integration Parameters: LSCINT.P
 Integrator: RTE
 Smoothing : OFF Filtering: 5
 Sampling : 1 Min Area: 0.1 % of largest Peak
 Start Thrs: 0.2 Max Peaks: 100
 Stop Thrs : 0 Peak Location: TOP

If leading or trailing edge < 100 prefer < Baseline drop else tangent >
 Peak separation: 5

Method : Z:\svoasrv\HPCHEM1\BNA_G\Methods\SFAM-EPA-BG062024.MA.M
 Title : SVOA CALIBRATION

77	15.029	1996	1998	2003	rVV4	17979	23875	1.32%	0.097%
78	15.082	2003	2007	2014	rVB6	28872	47818	2.65%	0.194%
79	15.346	2050	2052	2059	rVB7	14964	18912	1.05%	0.077%
80	15.393	2059	2060	2063	rBV3	5710	4407	0.24%	0.018%
81	15.517	2078	2081	2086	rVB4	18246	24116	1.34%	0.098%
82	15.675	2102	2108	2114	rBV	1173812	1739727	96.35%	7.049%
83	15.787	2122	2127	2133	rVB2	173698	261091	14.46%	1.058%
84	16.069	2173	2175	2178	rBV4	11991	10933	0.61%	0.044%
85	16.145	2185	2188	2191	rVB4	20480	21622	1.20%	0.088%
86	16.304	2212	2215	2220	rBV6	11594	16296	0.90%	0.066%
87	16.380	2224	2228	2230	rBV5	27725	37561	2.08%	0.152%
88	17.085	2344	2348	2352	rBV6	21220	28184	1.56%	0.114%
89	17.432	2401	2407	2411	rBV	684381	1034260	57.28%	4.191%
90	17.473	2411	2414	2418	rVV	269828	376303	20.84%	1.525%
91	17.532	2418	2424	2434	rVB	1153675	1805690	100.00%	7.316%
92	18.313	2552	2557	2561	rBV2	184665	291557	16.15%	1.181%
93	18.355	2561	2564	2568	rVB	84063	120511	6.67%	0.488%
94	18.496	2584	2588	2592	rBV3	75884	130952	7.25%	0.531%
95	19.477	2751	2755	2761	rVB	565449	757880	41.97%	3.071%
96	19.812	2807	2812	2815	rBV	1166169	1755786	97.24%	7.114%
97	21.333	3067	3071	3080	rVB2	632486	1003221	55.56%	4.065%
98	21.692	3126	3132	3137	rBV3	557402	1092617	60.51%	4.427%
99	22.520	3267	3273	3283	rVB4	551900	1386517	76.79%	5.618%
100	24.013	3522	3527	3532	rVB	538510	975699	54.03%	3.953%

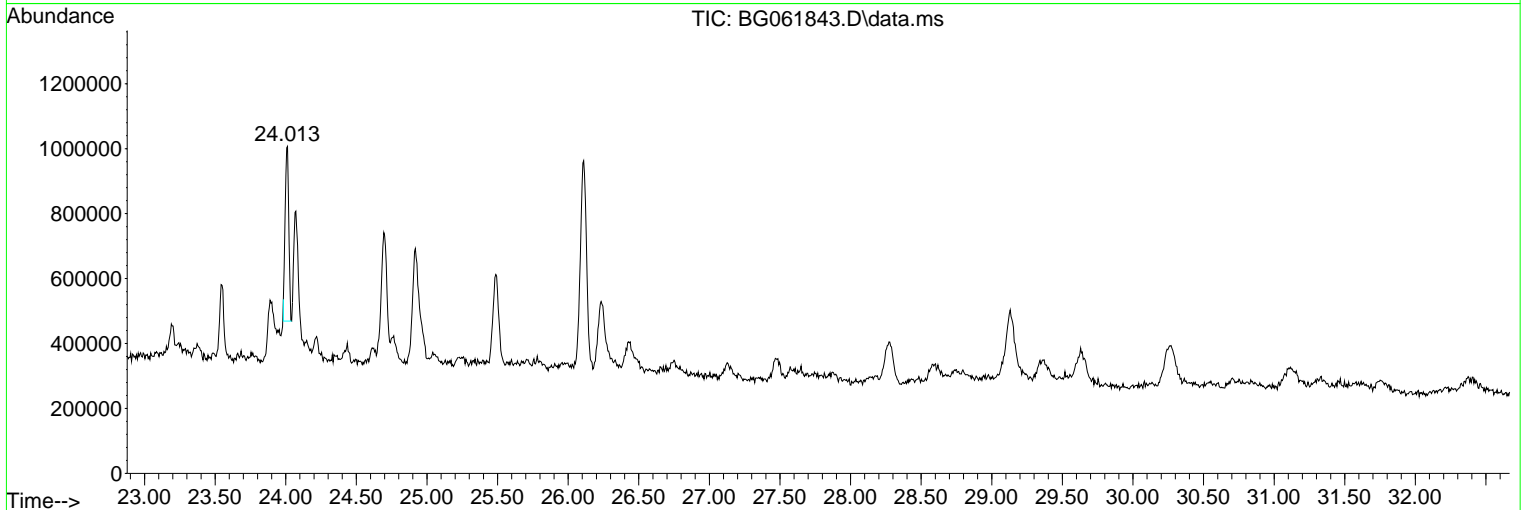
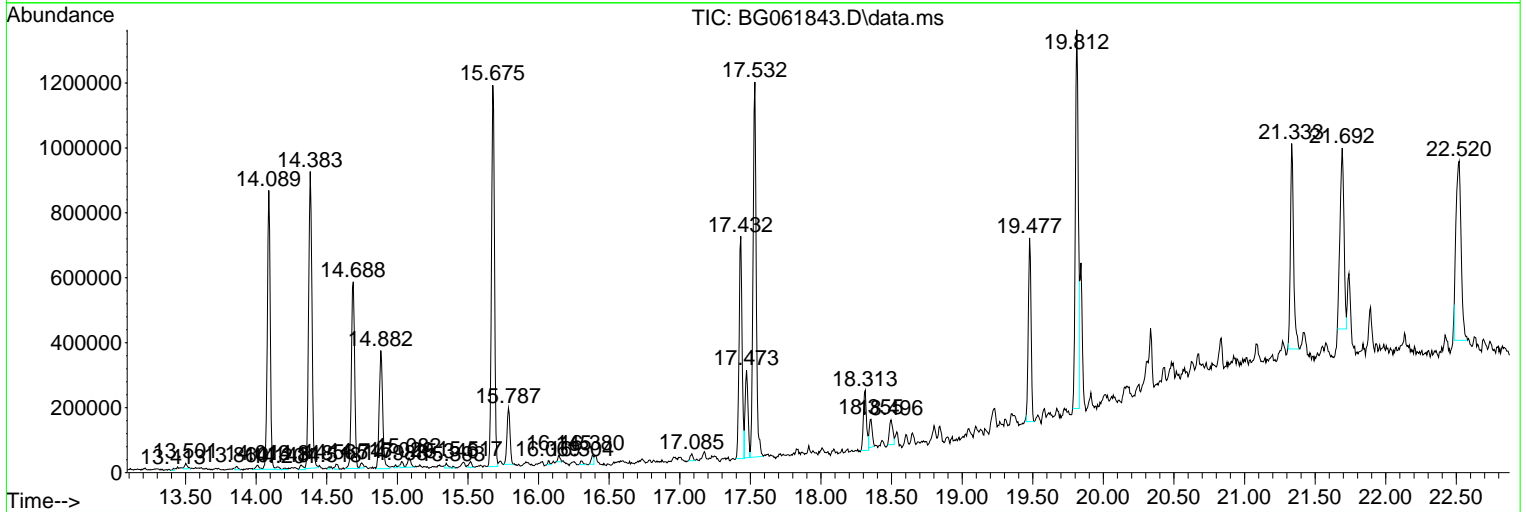
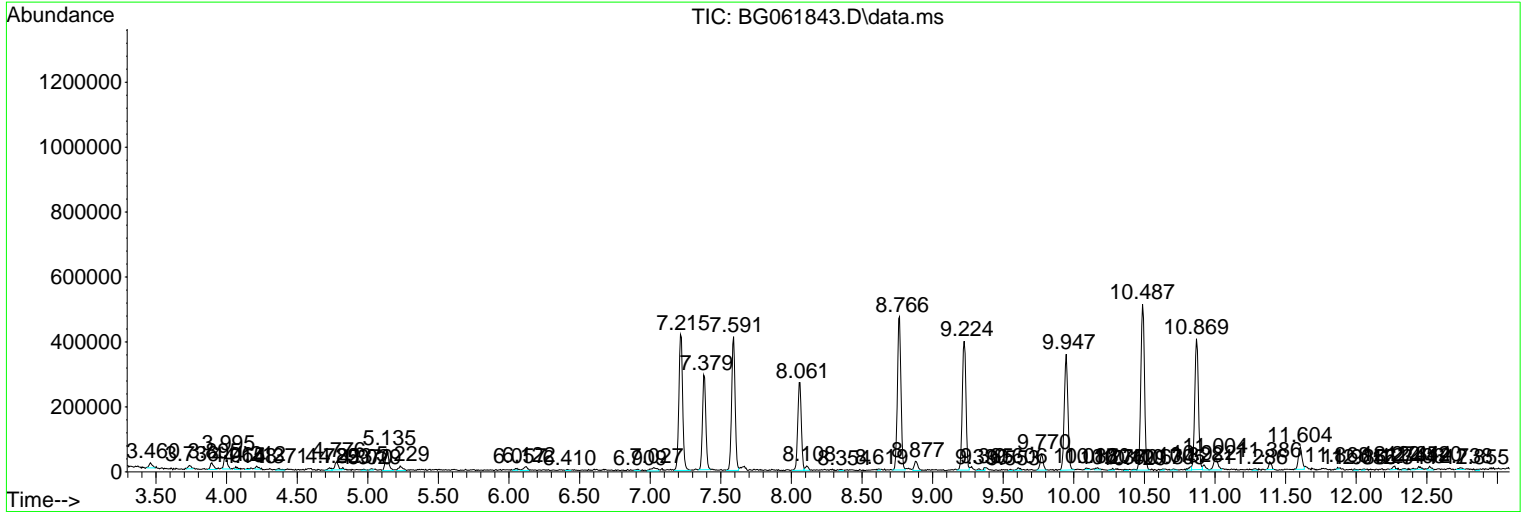
Sum of corrected areas: 24679725

Data Path : Z:\svoasrv\HPCHEM1\BNA_G\Data\BG070124\
 Data File : BG061843.D
 Acq On : 2 Jul 2024 12:23
 Operator : MA/JU
 Sample : P2963-11
 Misc :
 ALS Vial : 40 Sample Multiplier: 1

Instrument :
 BNA_G
 ClientSampleId :
 A4CR5

Quant Method : Z:\svoasrv\HPCHEM1\BNA_G\Methods\SFAM-EPA-BG062024.MA.M
 Quant Title : SVOA CALIBRATION

TIC Library : C:\DATABASE\NIST20.L
 TIC Integration Parameters: LSCINT.P



Data Path : Z:\svoasrv\HPCHEM1\BNA_G\Data\BG070124\
 Data File : BG061843.D
 Acq On : 2 Jul 2024 12:23
 Operator : MA/JU
 Sample : P2963-11
 Misc :
 ALS Vial : 40 Sample Multiplier: 1

Instrument :
 BNA_G
 ClientSampleId :
 A4CR5

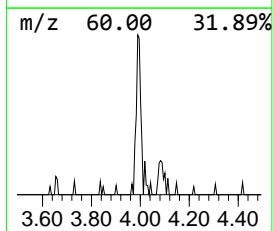
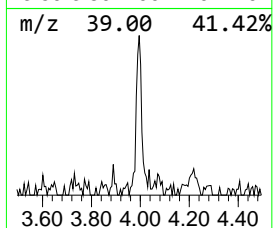
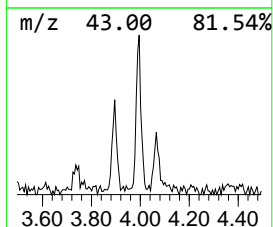
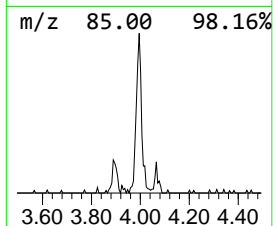
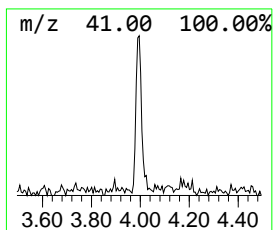
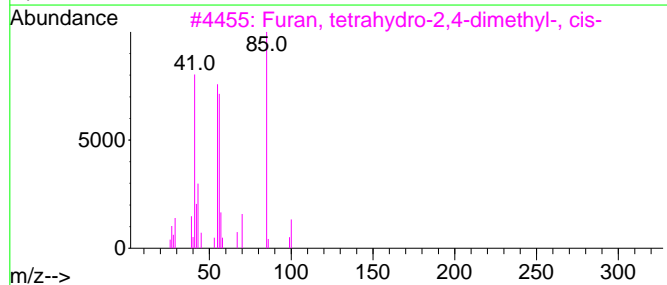
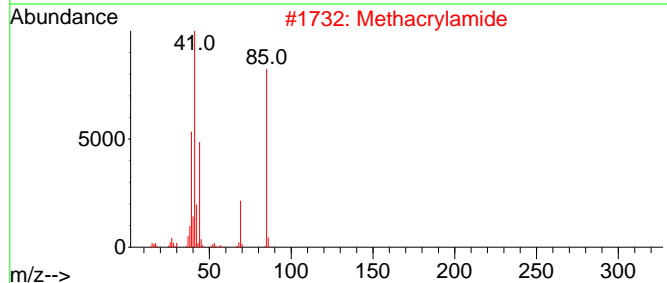
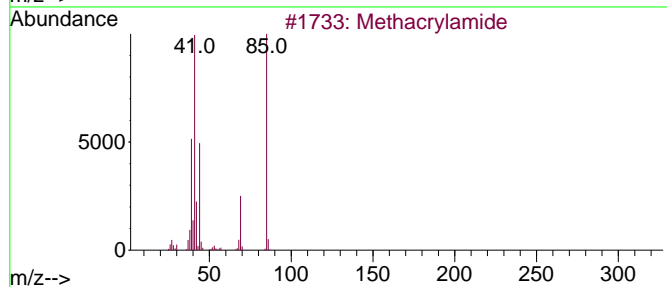
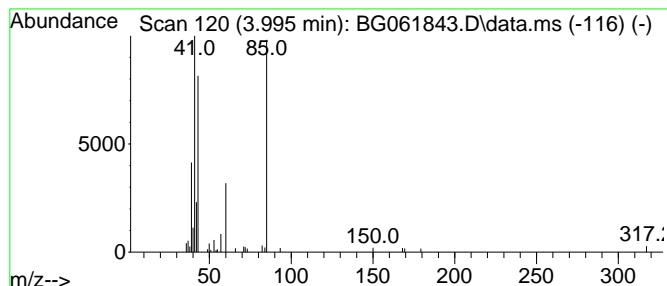
Quant Method : Z:\svoasrv\HPCHEM1\BNA_G\Methods\SFAM-EPA-BG062024.MA.M
 Quant Title : SVOA CALIBRATION

TIC Library : C:\DATABASE\NIST20.L
 TIC Integration Parameters: LSCINT.P

 Peak Number 1 Methacrylamide Concentration Rank 7

R.T.	EstConc	Area	Relative to ISTD	R.T.
3.995	2.78 ng/ul	66643	1,4-Dichlorobenzene-d4	8.055

Hit#	of	5	Tentative ID	MW	MolForm	CAS#	Qual
1			Methacrylamide	85	C4H7NO	000079-39-0	59
2			Methacrylamide	85	C4H7NO	000079-39-0	25
3			Furan, tetrahydro-2,4-dimethyl-,...	100	C6H12O	039168-01-9	9
4			2,4-Heptanedione, 6-methyl-	142	C8H14O2	003002-23-1	9
5			4-Hexen-3-ol, 2,5-dimethyl-	128	C8H16O	060703-31-3	9



Data Path : Z:\svoasrv\HPCHEM1\BNA_G\Data\BG070124\
 Data File : BG061843.D
 Acq On : 2 Jul 2024 12:23
 Operator : MA/JU
 Sample : P2963-11
 Misc :
 ALS Vial : 40 Sample Multiplier: 1

Instrument :
 BNA_G
 ClientSampleId :
 A4CR5

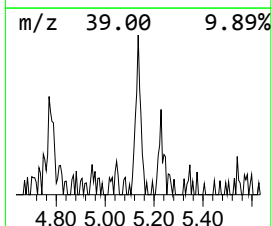
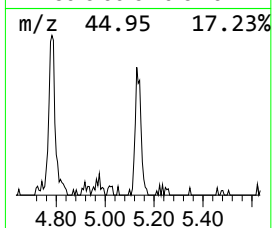
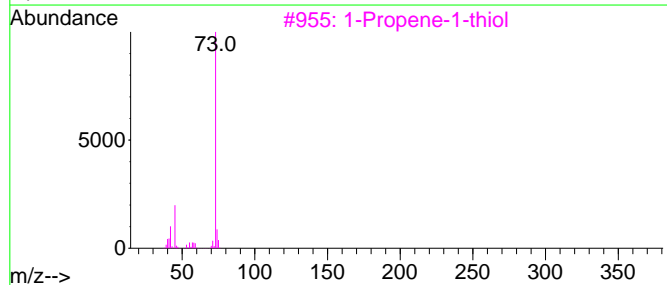
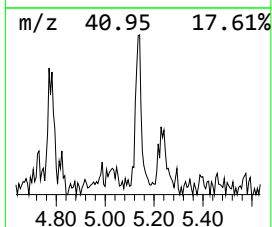
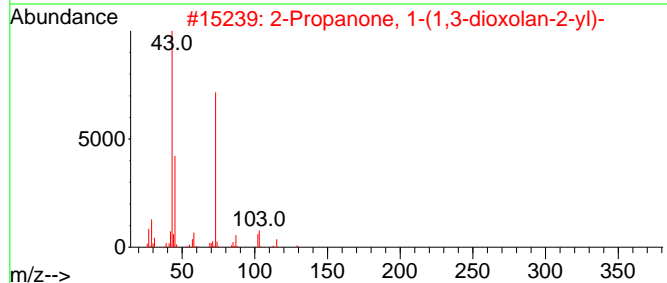
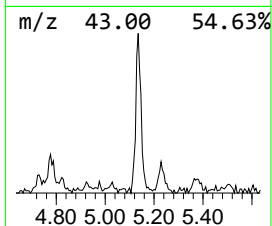
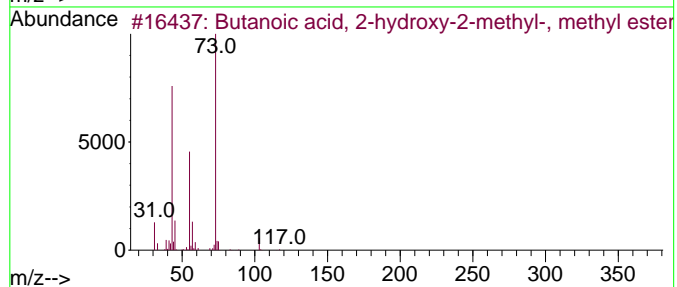
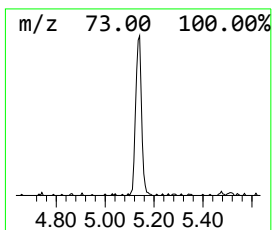
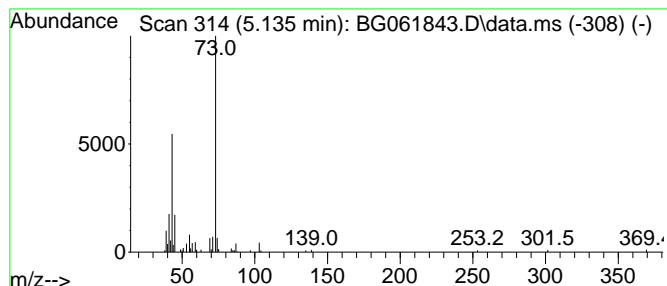
Quant Method : Z:\svoasrv\HPCHEM1\BNA_G\Methods\SFAM-EPA-BG062024.MA.M
 Quant Title : SVOA CALIBRATION

TIC Library : C:\DATABASE\NIST20.L
 TIC Integration Parameters: LSCINT.P

 Peak Number 2 unknown-01 Concentration Rank 5

R.T.	EstConc	Area	Relative to ISTD	R.T.
5.135	4.48 ng/ul	107554	1,4-Dichlorobenzene-d4	8.055

Hit#	of	Tentative ID	MW	MolForm	CAS#	Qual
1	5	Butanoic acid, 2-hydroxy-2-methyl...	132	C6H12O3	032793-34-3	36
2		2-Propanone, 1-(1,3-dioxolan-2-yl)-	130	C6H10O3	000767-04-4	36
3		1-Propene-1-thiol	74	C3H6S	000925-89-3	25
4		3-Pentanol, 3-methyl-	102	C6H14O	000077-74-7	23
5		2-Hydroxy-2-methylbutyric acid	118	C5H10O3	003739-30-8	23



Data Path : Z:\svoasrv\HPCHEM1\BNA_G\Data\BG070124\
 Data File : BG061843.D
 Acq On : 2 Jul 2024 12:23
 Operator : MA/JU
 Sample : P2963-11
 Misc :
 ALS Vial : 40 Sample Multiplier: 1

Instrument :
 BNA_G
 ClientSampleId :
 A4CR5

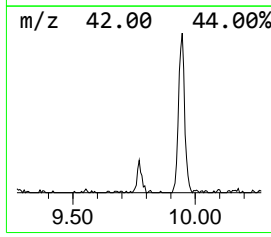
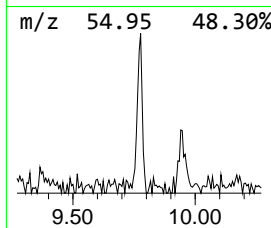
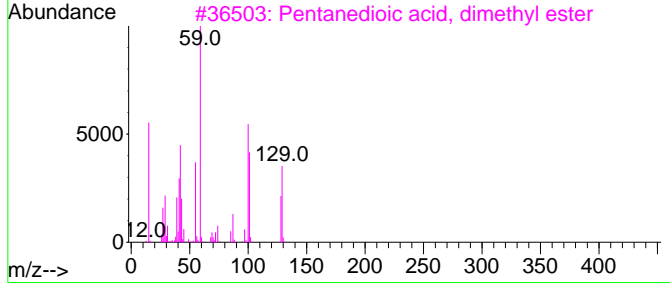
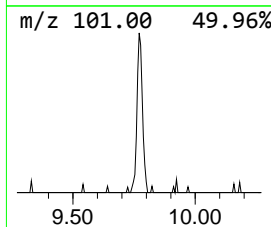
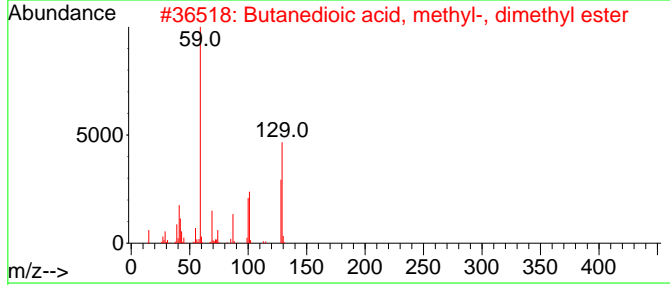
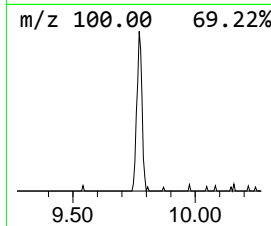
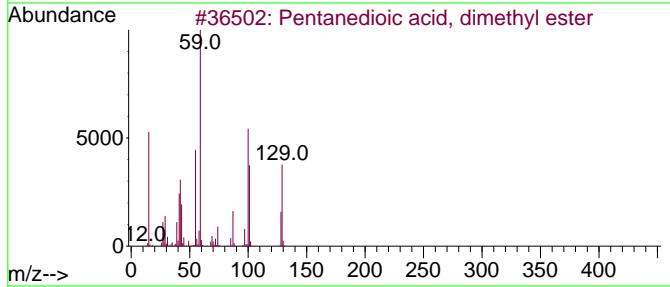
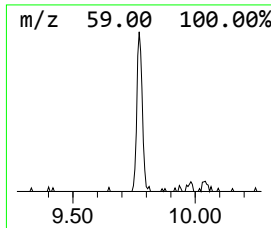
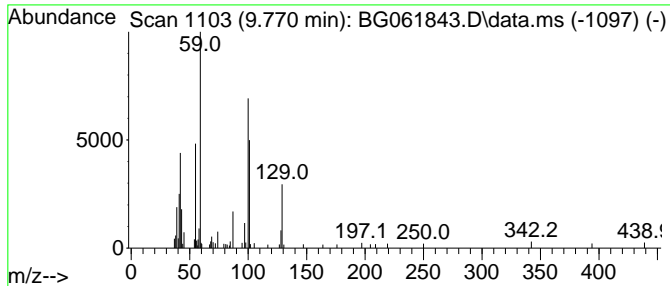
Quant Method : Z:\svoasrv\HPCHEM1\BNA_G\Methods\SFAM-EPA-BG062024.MA.M
 Quant Title : SVOA CALIBRATION

TIC Library : C:\DATABASE\NIST20.L
 TIC Integration Parameters: LSCINT.P

 Peak Number 3 Pentanedioic acid, dimethyl... Concentration Rank 10

R.T.	EstConc	Area	Relative to ISTD	R.T.
9.770	2.11 ng/ul	76271	Naphthalene-d8	10.869

Hit#	of 5	Tentative ID	MW	MolForm	CAS#	Qual
1		Pentanedioic acid, dimethyl ester	160	C7H12O4	001119-40-0	50
2		Butanedioic acid, methyl-, dimet...	160	C7H12O4	001604-11-1	43
3		Pentanedioic acid, dimethyl ester	160	C7H12O4	001119-40-0	40
4		Pentanedioic acid, dimethyl ester	160	C7H12O4	001119-40-0	38
5		Oxetane, 2,2,3-trimethyl-	100	C6H12O	023120-43-6	35



Data Path : Z:\svoasrv\HPCHEM1\BNA_G\Data\BG070124\
 Data File : BG061843.D
 Acq On : 2 Jul 2024 12:23
 Operator : MA/JU
 Sample : P2963-11
 Misc :
 ALS Vial : 40 Sample Multiplier: 1

Instrument :
 BNA_G
 ClientSampleId :
 A4CR5

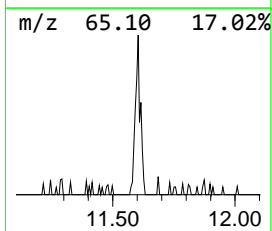
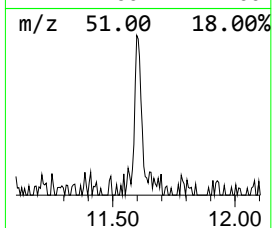
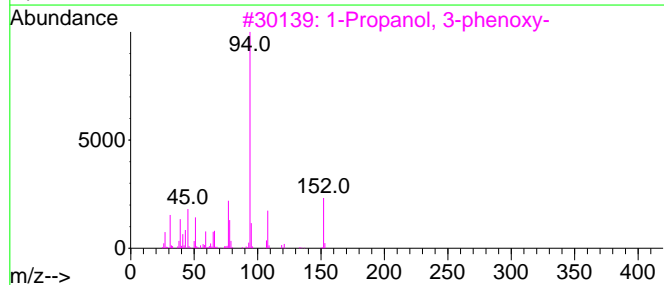
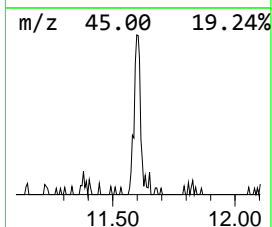
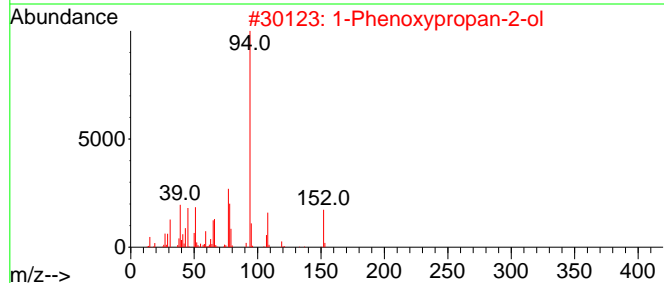
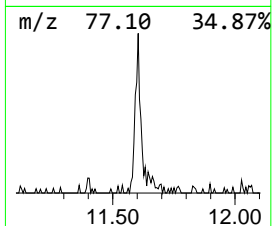
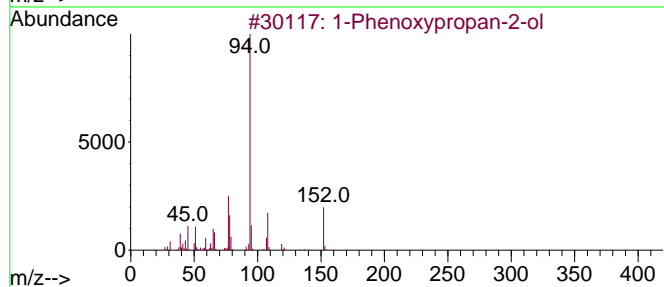
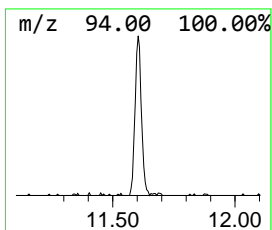
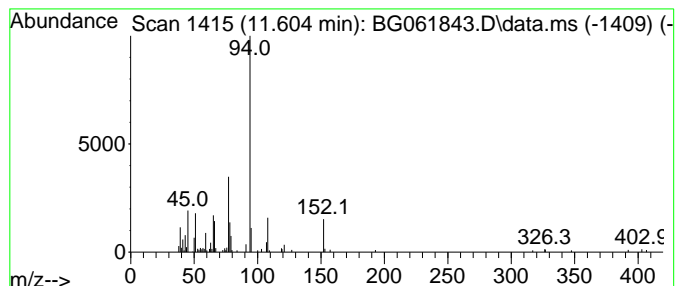
Quant Method : Z:\svoasrv\HPCHEM1\BNA_G\Methods\SFAM-EPA-BG062024.MA.M
 Quant Title : SVOA CALIBRATION

TIC Library : C:\DATABASE\NIST20.L
 TIC Integration Parameters: LSCINT.P

 Peak Number 4 1-Phenoxypropan-2-ol Concentration Rank 6

R.T.	EstConc	Area	Relative to ISTD	R.T.
11.604	3.40 ng/ul	122730	Naphthalene-d8	10.869

Hit#	of 5	Tentative ID	MW	MolForm	CAS#	Qual
1		1-Phenoxypropan-2-ol	152	C9H12O2	000770-35-4	94
2		1-Phenoxypropan-2-ol	152	C9H12O2	000770-35-4	93
3		1-Propanol, 3-phenoxy-	152	C9H12O2	006180-61-6	91
4		1-Phenoxypropan-2-ol	152	C9H12O2	000770-35-4	90
5		1-Phenoxypropan-2-ol	152	C9H12O2	000770-35-4	87



Data Path : Z:\svoasrv\HPCHEM1\BNA_G\Data\BG070124\
 Data File : BG061843.D
 Acq On : 2 Jul 2024 12:23
 Operator : MA/JU
 Sample : P2963-11
 Misc :
 ALS Vial : 40 Sample Multiplier: 1

Instrument :
 BNA_G
 ClientSampleId :
 A4CR5

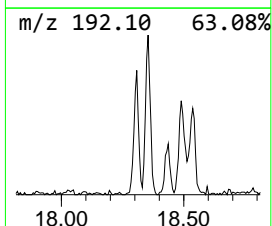
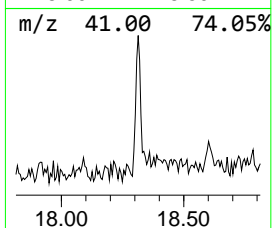
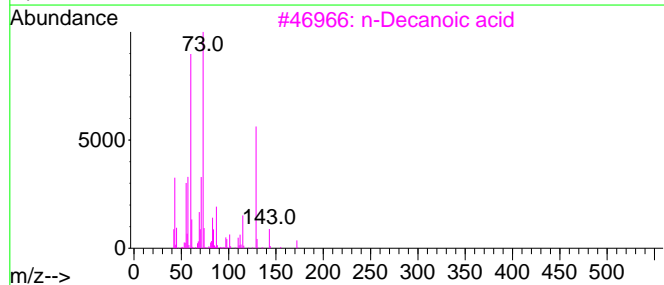
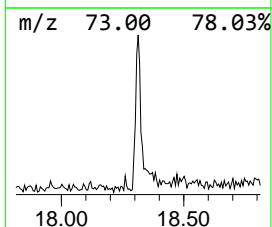
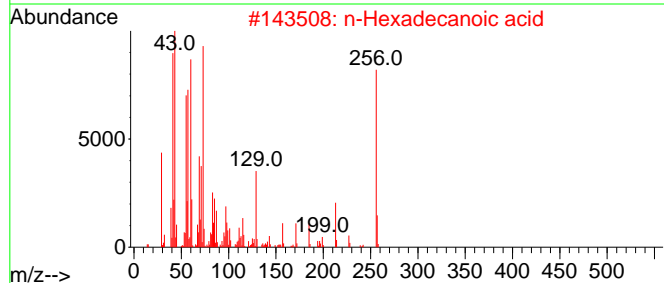
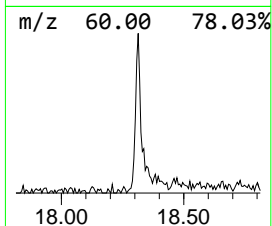
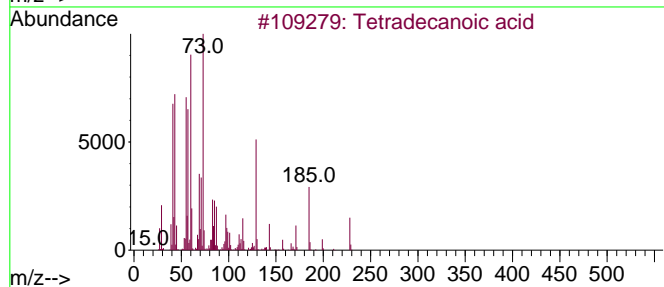
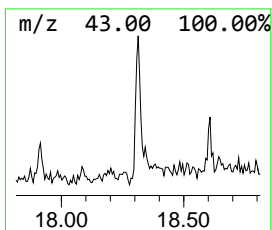
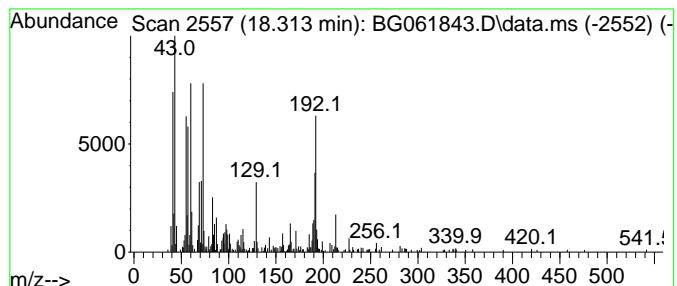
Quant Method : Z:\svoasrv\HPCHEM1\BNA_G\Methods\SFAM-EPA-BG062024.MA.M
 Quant Title : SVOA CALIBRATION

TIC Library : C:\DATABASE\NIST20.L
 TIC Integration Parameters: LSCINT.P

 Peak Number 5 Tetradecanoic acid Concentration Rank 4

R.T.	EstConc	Area	Relative to ISTD	R.T.
18.313	5.64 ng/ul	291557	Phenanthrene-d10	17.432

Hit#	of	5	Tentative ID	MW	MolForm	CAS#	Qual
1			Tetradecanoic acid	228	C14H28O2	000544-63-8	90
2			n-Hexadecanoic acid	256	C16H32O2	000057-10-3	87
3			n-Decanoic acid	172	C10H20O2	000334-48-5	60
4			Tridecanoic acid	214	C13H26O2	000638-53-9	60
5			n-Decanoic acid	172	C10H20O2	000334-48-5	60



Data Path : Z:\svoasrv\HPCHEM1\BNA_G\Data\BG070124\
 Data File : BG061843.D
 Acq On : 2 Jul 2024 12:23
 Operator : MA/JU
 Sample : P2963-11
 Misc :
 ALS Vial : 40 Sample Multiplier: 1

Instrument :
 BNA_G
 ClientSampleId :
 A4CR5

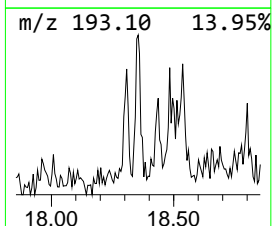
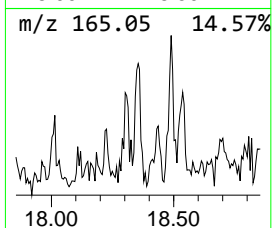
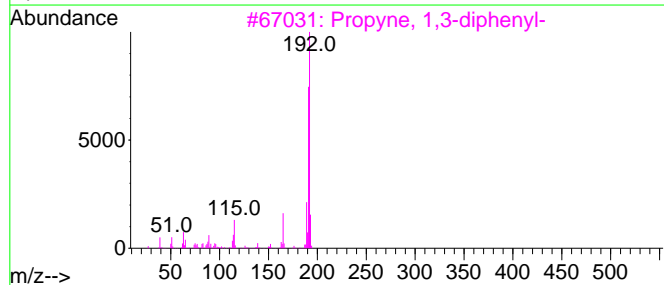
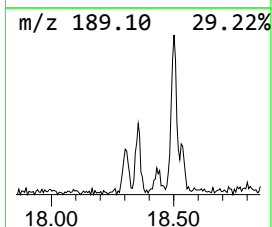
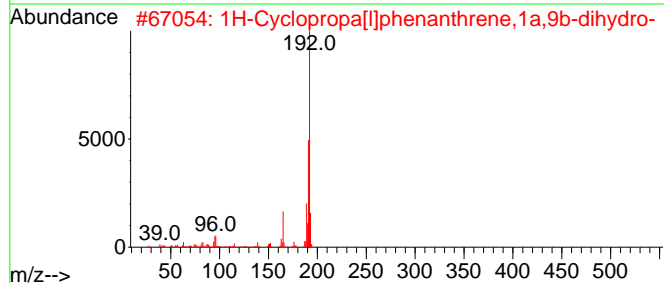
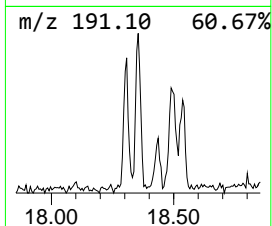
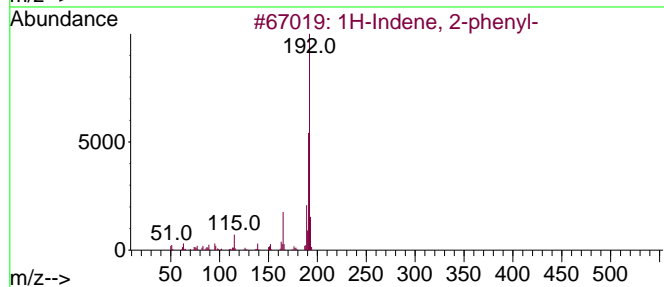
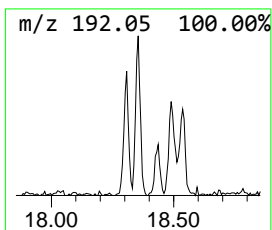
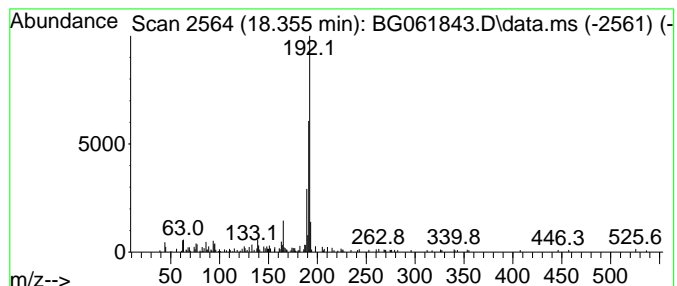
Quant Method : Z:\svoasrv\HPCHEM1\BNA_G\Methods\SFAM-EPA-BG062024.MA.M
 Quant Title : SVOA CALIBRATION

TIC Library : C:\DATABASE\NIST20.L
 TIC Integration Parameters: LSCINT.P

 Peak Number 6 1H-Indene, 2-phenyl- Concentration Rank 9

R.T.	EstConc	Area	Relative to ISTD	R.T.
18.355	2.33 ng/ul	120511	Phenanthrene-d10	17.432

Hit#	of 5	Tentative ID	MW	MolForm	CAS#	Qual
1		1H-Indene, 2-phenyl-	192	C15H12	004505-48-0	90
2		1H-Cyclopropa[1]phenanthrene,1a,...	192	C15H12	000949-41-7	83
3		Propyne, 1,3-diphenyl-	192	C15H12	004980-70-5	81
4		Phenanthrene, 4-methyl-	192	C15H12	000832-64-4	81
5		Phenanthrene, 1-methyl-	192	C15H12	000832-69-9	81



Data Path : Z:\svoasrv\HPCHEM1\BNA_G\Data\BG070124\
 Data File : BG061843.D
 Acq On : 2 Jul 2024 12:23
 Operator : MA/JU
 Sample : P2963-11
 Misc :
 ALS Vial : 40 Sample Multiplier: 1

Instrument :
 BNA_G
 ClientSampleId :
 A4CR5

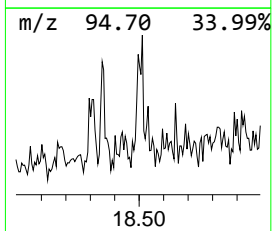
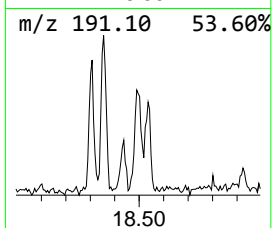
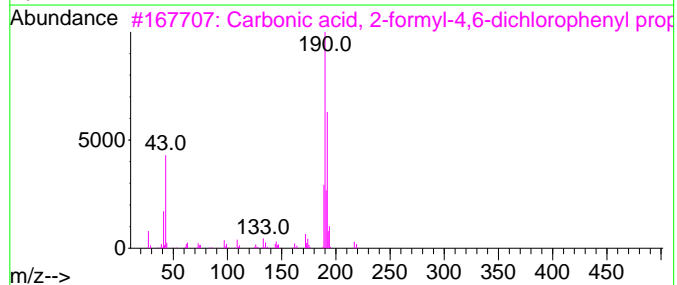
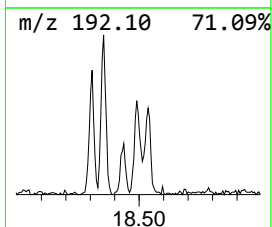
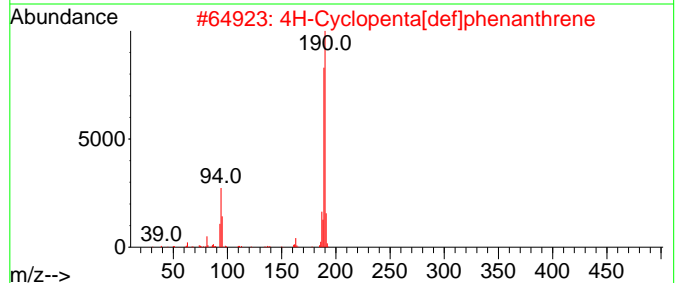
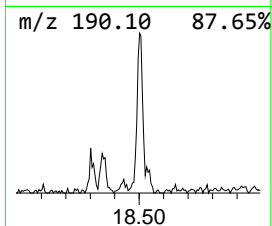
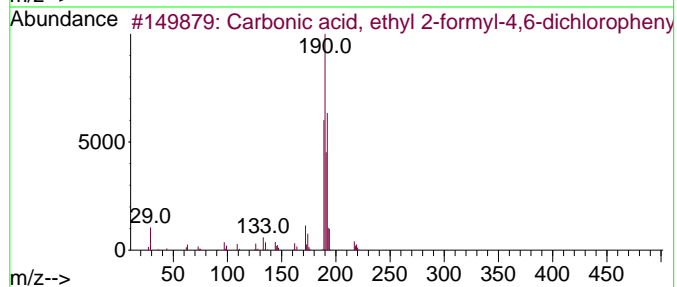
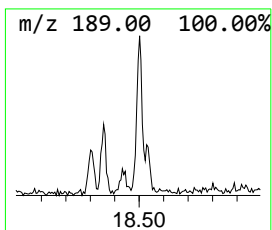
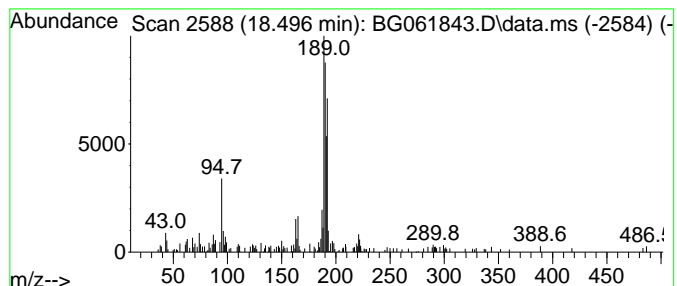
Quant Method : Z:\svoasrv\HPCHEM1\BNA_G\Methods\SFAM-EPA-BG062024.MA.M
 Quant Title : SVOA CALIBRATION

TIC Library : C:\DATABASE\NIST20.L
 TIC Integration Parameters: LSCINT.P

 Peak Number 7 Carbonic acid, ethyl 2-form... Concentration Rank 8

R.T.	EstConc	Area	Relative to ISTD	R.T.
18.496	2.53 ng/ul	130952	Phenanthrene-d10	17.432

Hit#	of	5	Tentative ID	MW	MolForm	CAS#	Qual
1			Carbonic acid, ethyl 2-formyl-4,...	262	C10H8Cl2O4	1000331-34-4	50
2			4H-Cyclopenta[def]phenanthrene	190	C15H10	000203-64-5	46
3			Carbonic acid, 2-formyl-4,6-dich...	276	C11H10Cl2O4	1000331-39-3	38
4			Carbonic acid, isobutyl 2-formyl...	290	C12H12Cl2O4	1000331-40-8	35
5			2,6-Dichloro-5-fluoronicotinonit...	190	C6HC12FN2	082671-02-1	30



Data Path : Z:\svoasrv\HPCHEM1\BNA_G\Data\BG070124\
 Data File : BG061843.D
 Acq On : 2 Jul 2024 12:23
 Operator : MA/JU
 Sample : P2963-11
 Misc :
 ALS Vial : 40 Sample Multiplier: 1

Instrument :
 BNA_G
 ClientSampleId :
 A4CR5

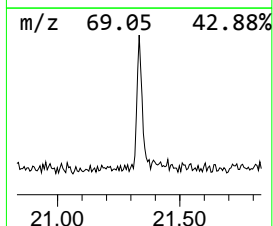
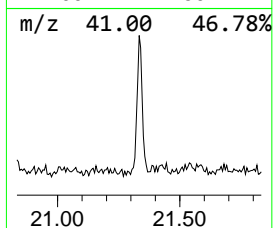
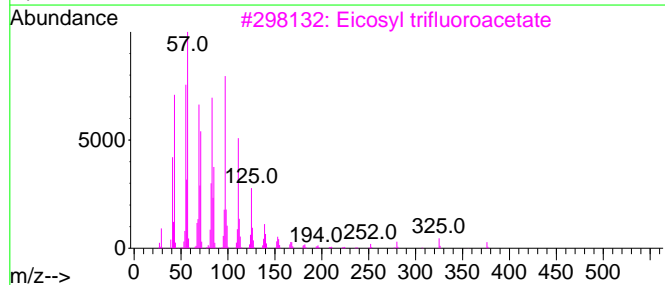
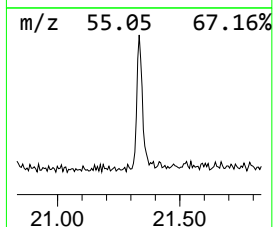
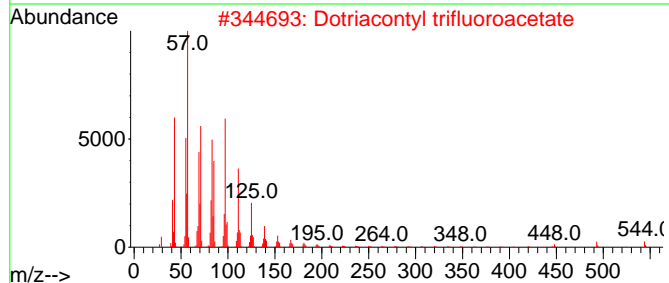
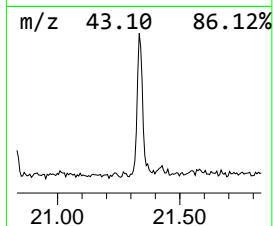
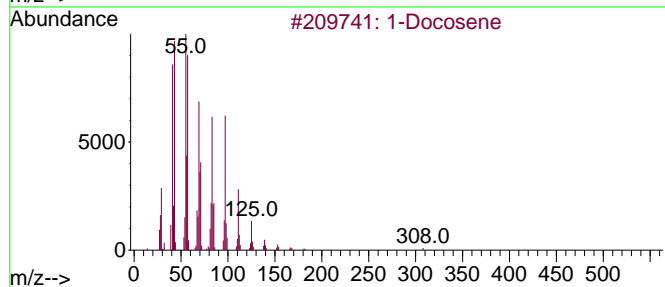
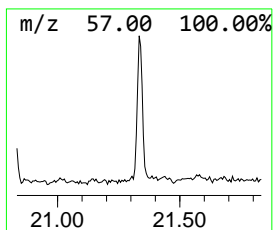
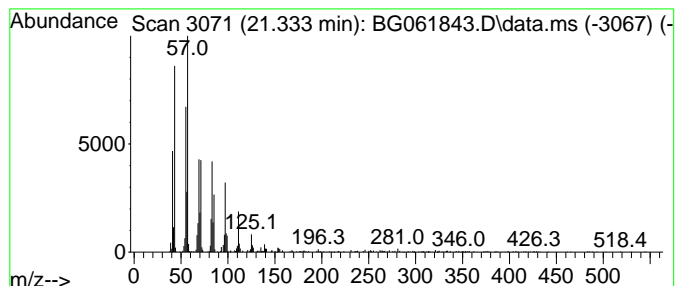
Quant Method : Z:\svoasrv\HPCHEM1\BNA_G\Methods\SFAM-EPA-BG062024.MA.M
 Quant Title : SVOA CALIBRATION

TIC Library : C:\DATABASE\NIST20.L
 TIC Integration Parameters: LSCINT.P

 Peak Number 8 (DEL) Alkane: Straight-Chai... Concentration Rank 3

R.T.	EstConc	Area	Relative to ISTD	R.T.
21.333	18.36 ng/ul	1003220	Chrysene-d12	21.692

Hit#	of 5	Tentative ID	MW	MolForm	CAS#	Qual
1		1-Docosene	308	C22H44	001599-67-3	98
2		Dotriacontyl trifluoroacetate	562	C34H65F3O2	1000351-75-4	91
3		Eicosyl trifluoroacetate	394	C22H41F3O2	1000351-75-2	91
4		Octacosyl trifluoroacetate	506	C30H57F3O2	1000351-74-9	91
5		Tricosyl trifluoroacetate	436	C25H47F3O2	1000351-75-1	91



Data Path : Z:\svoasrv\HPCHEM1\BNA_G\Data\BG070124\
 Data File : BG061843.D
 Acq On : 2 Jul 2024 12:23
 Operator : MA/JU
 Sample : P2963-11
 Misc :
 ALS Vial : 40 Sample Multiplier: 1

Instrument :
 BNA_G
 ClientSampleId :
 A4CR5

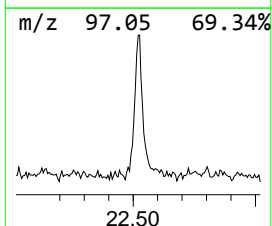
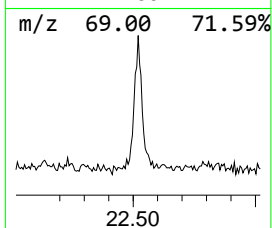
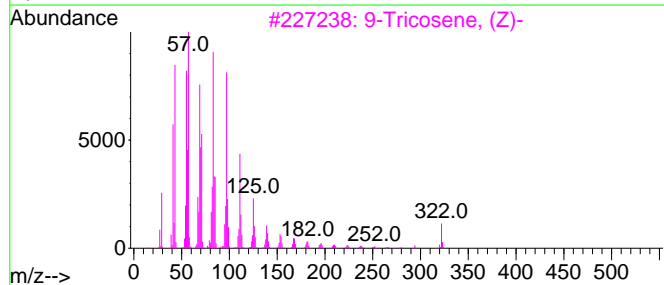
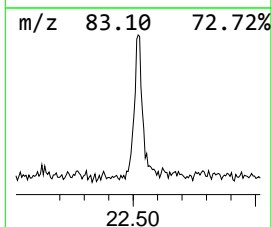
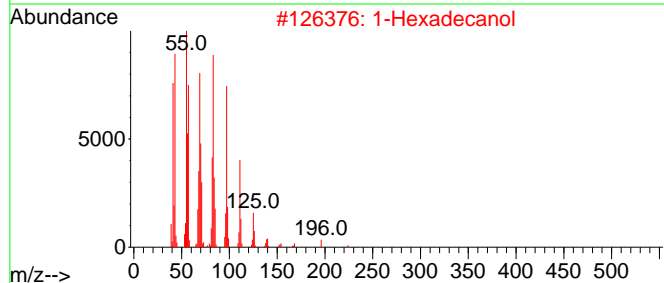
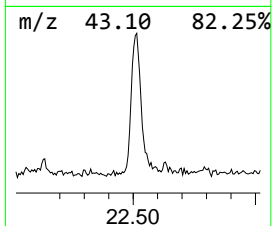
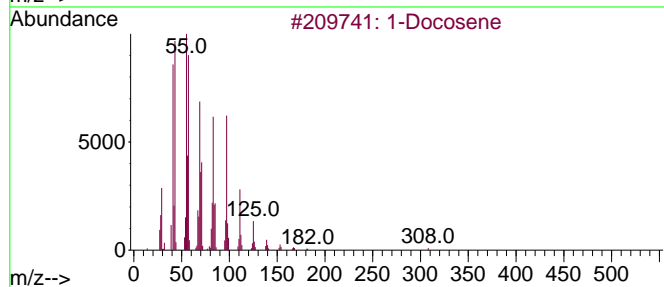
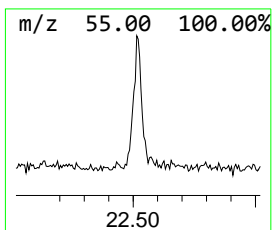
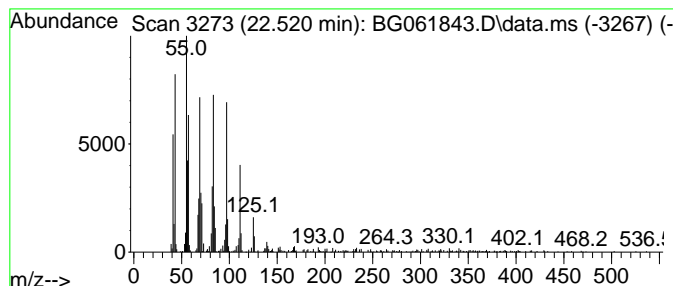
Quant Method : Z:\svoasrv\HPCHEM1\BNA_G\Methods\SFAM-EPA-BG062024.MA.M
 Quant Title : SVOA CALIBRATION

TIC Library : C:\DATABASE\NIST20.L
 TIC Integration Parameters: LSCINT.P

 Peak Number 9 (DEL) Alkane: Straight-Chai... Concentration Rank 1

R.T.	EstConc	Area	Relative to ISTD	R.T.
22.520	25.38 ng/ul	1386520	Chrysene-d12	21.692

Hit#	of 5	Tentative ID	MW	MolForm	CAS#	Qual
1		1-Docosene	308	C22H44	001599-67-3	94
2		1-Hexadecanol	242	C16H34O	036653-82-4	87
3		9-Tricosene, (Z)-	322	C23H46	027519-02-4	83
4		9-Tricosene, (Z)-	322	C23H46	027519-02-4	83
5		1-Nonadecene	266	C19H38	018435-45-5	83



Data Path : Z:\svoasrv\HPCHEM1\BNA_G\Data\BG070124\
 Data File : BG061843.D
 Acq On : 2 Jul 2024 12:23
 Operator : MA/JU
 Sample : P2963-11
 Misc :
 ALS Vial : 40 Sample Multiplier: 1

Instrument :
 BNA_G
 ClientSampleId :
 A4CR5

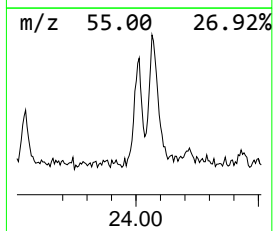
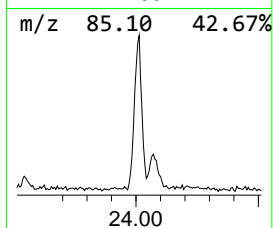
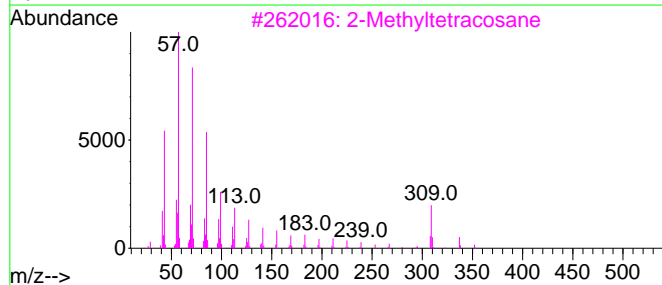
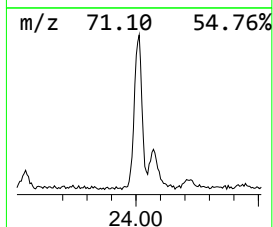
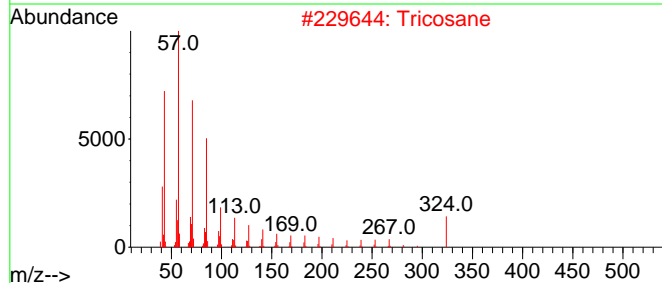
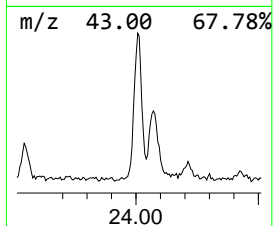
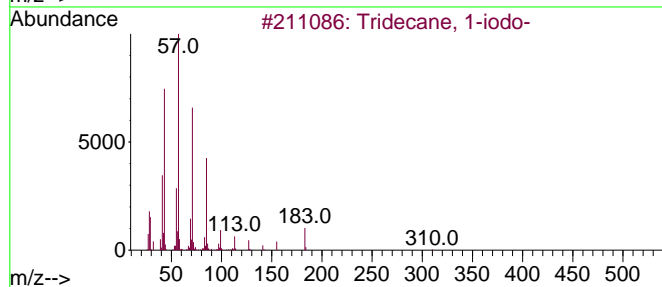
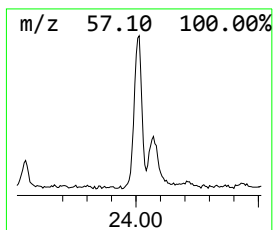
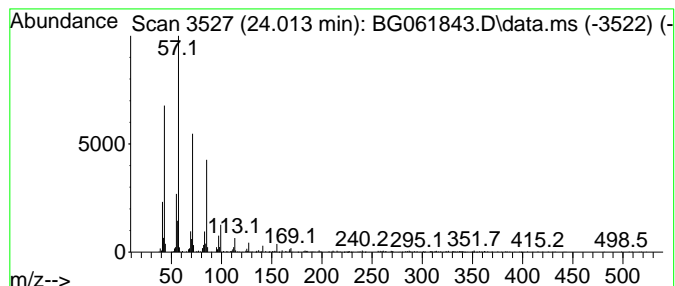
Quant Method : Z:\svoasrv\HPCHEM1\BNA_G\Methods\SFAM-EPA-BG062024.MA.M
 Quant Title : SVOA CALIBRATION

TIC Library : C:\DATABASE\NIST20.L
 TIC Integration Parameters: LSCINT.P

 Peak Number 10 Tridecane, 1-iodo- Concentration Rank 2

R.T.	EstConc	Area	Relative to ISTD	R.T.
24.013	20.00 ng/ul	975699	Perylene-d12	24.912

Hit#	of 5	Tentative ID	MW	MolForm	CAS#	Qual
1		Tridecane, 1-iodo-	310	C13H27I	035599-77-0	94
2		Tricosane	324	C23H48	000638-67-5	91
3		2-Methyltetracosane	352	C25H52	001560-78-7	90
4		Docosane	310	C22H46	000629-97-0	86
5		Heneicosane	296	C21H44	000629-94-7	83



Data Path : Z:\svoasrv\HPCHEM1\BNA_G\Data\BG070124\
 Data File : BG061843.D
 Acq On : 2 Jul 2024 12:23
 Operator : MA/JU
 Sample : P2963-11
 Misc :
 ALS Vial : 40 Sample Multiplier: 1

Instrument :
 BNA_G
 ClientSampleId :
 A4CR5

Quant Method : Z:\svoasrv\HPCHEM1\BNA_G\Methods\SFAM-EPA-BG062024.MA.M
 Quant Title : SVOA CALIBRATION

TIC Library : C:\DATABASE\NIST20.L
 TIC Integration Parameters: LSCINT.P

TIC Top Hit name	RT	EstConc	Units	Response	--Internal Standard--			
					#	RT	Resp	Conc
Methacrylamide	3.995	2.8	ng/ul	66643	1	8.055	480293	20.0
unknown-01	5.135	4.5	ng/ul	107554	1	8.055	480293	20.0
Pentanedioic ac...	9.770	2.1	ng/ul	76271	2	10.869	722584	20.0
1-Phenoxypropan...	11.604	3.4	ng/ul	122730	2	10.869	722584	20.0
Tetradecanoic acid	18.313	5.6	ng/ul	291557	4	17.432	1034260	20.0
1H-Indene, 2-ph...	18.355	2.3	ng/ul	120511	4	17.432	1034260	20.0
Carbonic acid, ...	18.496	2.5	ng/ul	130952	4	17.432	1034260	20.0
(DEL) Alkane: S...	21.333	18.4	ng/ul	1003220	5	21.692	1092620	20.0
(DEL) Alkane: S...	22.520	25.4	ng/ul	1386520	5	21.692	1092620	20.0
Tridecane, 1-iodo-	24.013	20.0	ng/ul	975699	6	24.912	975699	20.0