

Data Path : Z:\HPCHEM1\BNA G\DATA\BG070216\
 Data File : BG022793.D
 Acq On : 2 Jul 2016 14:28
 Operator : UM/SJ
 Sample : H3752-17
 Misc :
 ALS Vial : 34 Sample Multiplier: 1

Instrument :
 BNA_G
 ClientSampleId :
 BDHNO

Quant Time: Jul 03 00:32:36 2016
 Quant Method : Z:\HPCHEM1\BNA G\METHODS\SOM02.2-EPA-BG063016.M
 Quant Title : SVOA CALIBRATION
 QLast Update : Sun Jul 03 00:31:55 2016
 Response via : Initial Calibration

Internal Standards	R.T.	QIon	Response	Conc	Units	Dev(Min)
1) 1,4-Dichlorobenzene-d4	8.16	152	156009	20.00	ng/ul	0.00
18) Naphthalene-d8	10.99	136	694000	20.00	ng/ul	0.00
35) Acenaphthene-d10	14.81	164	562115	20.00	ng/ul	0.00
61) Phenanthrene-d10	17.56	188	1396992	20.00	ng/ul	0.00
75) Chrysene-d12	21.86	240	1604716	20.00	ng/ul	0.00
83) Perylene-d12	25.23	264	1646828	20.00	ng/ul	0.01

System Monitoring Compounds

3) 1,4-Dioxane-d8	3.55	96	6801	2.44	ng/uL	0.01
5) Phenol-d5	7.31	99	386688	23.56	ng/ul	0.00
7) Bis-(2-Chloroethyl)ether-d	7.47	67	253931	27.44	ng/ul	0.00
9) 2-Chlorophenol-d4	7.69	132	273194	24.92	ng/ul	0.00
13) 4-Methylphenol-d8	8.87	113	317453	24.90	ng/ul	0.00
19) Nitrobenzene-d5	9.33	128	140206	25.34	ng/ul	0.00
22) 2-Nitrophenol-d4	10.06	143	170447	25.53	ng/ul	0.00
26) 2,4-Dichlorophenol-d3	10.60	165	331469	23.75	ng/ul	0.01
29) 4-Chloroaniline-d4	11.20	131	1707	0.14	ng/ul	0.09
43) Dimethylphthalate-d6	14.20	166	1247291	27.31	ng/ul	0.00
46) Acenaphthylene-d8	14.50	160	1368760	26.15	ng/ul	0.00
51) 4-Nitrophenol-d4	14.99	143	149040	20.79	ng/ul	0.00
57) Fluorene-d10	15.80	176	1194305	27.60	ng/ul	0.01
62) 4,6-Dinitro-2-methylphenol	15.90	200	159799	17.79	ng/ul	0.00
70) Anthracene-d10	17.66	188	1791413	27.59	ng/ul	0.00
76) Pyrene-d10	19.94	212	2158485	28.16	ng/ul	0.01
87) Benzo(a)pyrene-d12	25.01	264	2238778	28.61	ng/ul	0.02

Target Compounds

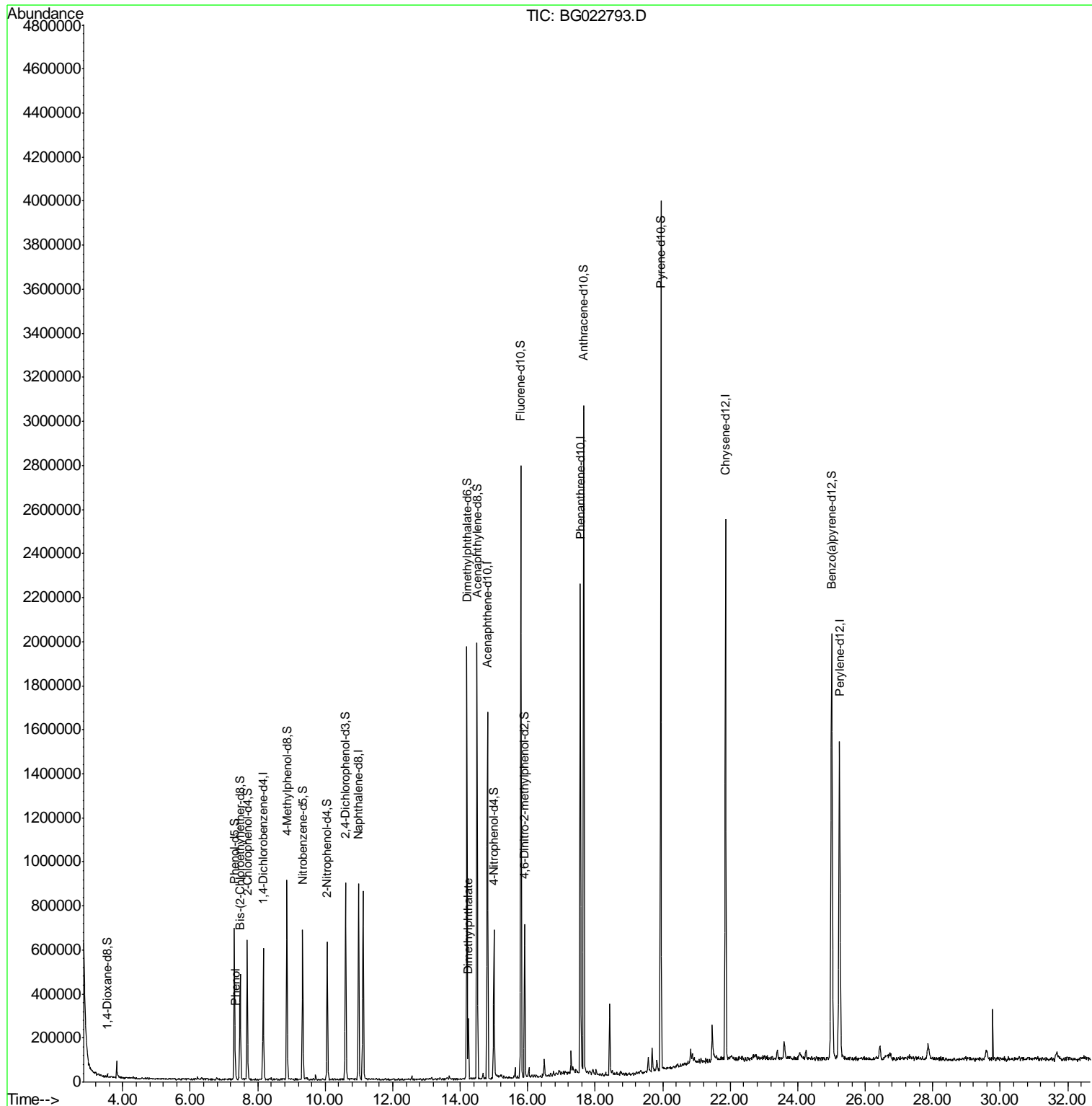
					Ovalue	
6) Phenol	7.34	94	18819	1.12	ng/ul#	40
44) Dimethylphthalate	14.24	163	161262	3.46	ng/ul	96

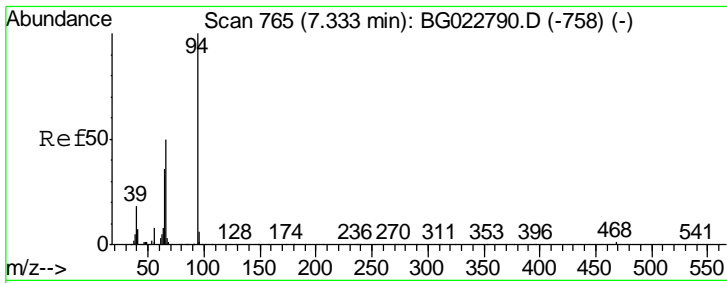
(#) = qualifier out of range (m) = manual integration (+) = signals summed

Data Path : Z:\HPCHEM1\BNA G\DATA\BG070216\
 Data File : BG022793.D
 Acq On : 2 Jul 2016 14:28
 Operator : UM/SJ
 Sample : H3752-17
 Misc :
 ALS Vial : 34 Sample Multiplier: 1

Instrument :
 BNA_G
 ClientSampleId :
 BDHN0

Quant Time: Jul 03 00:32:36 2016
 Quant Method : Z:\HPCHEM1\BNA G\METHODS\SOM02.2-EPA-BG063016.M
 Quant Title : SVOA CALIBRATION
 QLast Update : Sun Jul 03 00:31:55 2016
 Response via : Initial Calibration

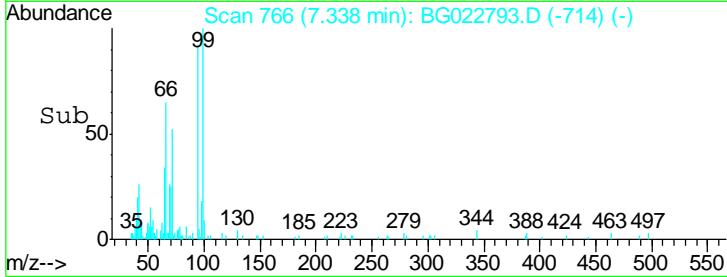
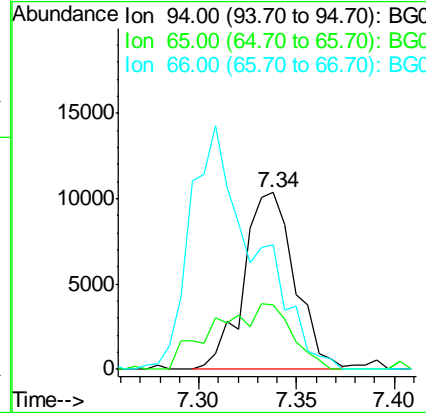
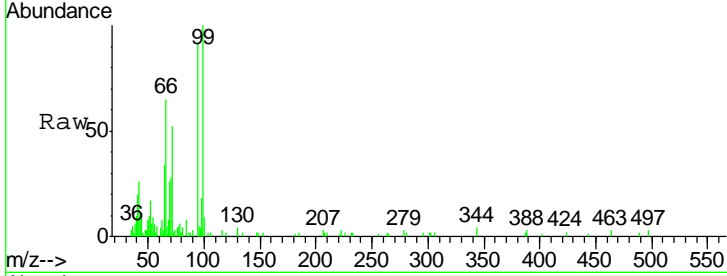




#6
 Phenol
 Concen: 1.12 ng/ul
 RT: 7.34 min Scan# 766
 Delta R.T. 0.00 min
 Lab File: BG022793.D
 Acq: 2 Jul 2016 14:28

Instrument :
 BNA_G
 ClientSampled :
 BDHNO

Tgt Ion	Resp	Lower	Upper
94	18819		
65	36.5	16.8	25.2#
66	70.2	22.6	33.8#



#44
 Dimethylphthalate
 Concen: 3.46 ng/ul
 RT: 14.24 min Scan# 1941
 Delta R.T. -0.00 min
 Lab File: BG022793.D
 Acq: 2 Jul 2016 14:28

Tgt Ion	Resp	Lower	Upper
163	161262		
194	4.0	3.4	5.2
164	12.7	8.8	13.2

