

Data Path : Z:\HPCHEM1\BNA G\DATA\BG070317\
 Data File : BG027840.D
 Acq On : 3 Jul 2017 20:13
 Operator : SJ/JU
 Sample : I3997-01
 Misc :
 ALS Vial : 12 Sample Multiplier: 1

Instrument :
 BNA_G
 ClientSampleId :

Quant Time: Jul 04 05:50:21 2017
 Quant Method : Z:\HPCHEM1\BNA G\METHODS\8270-BG062817.M
 Quant Title : ASP BNA STANDARDS FOR 5 POINT CALIBRATION
 QLast Update : Wed Jun 28 19:26:37 2017
 Response via : Initial Calibration

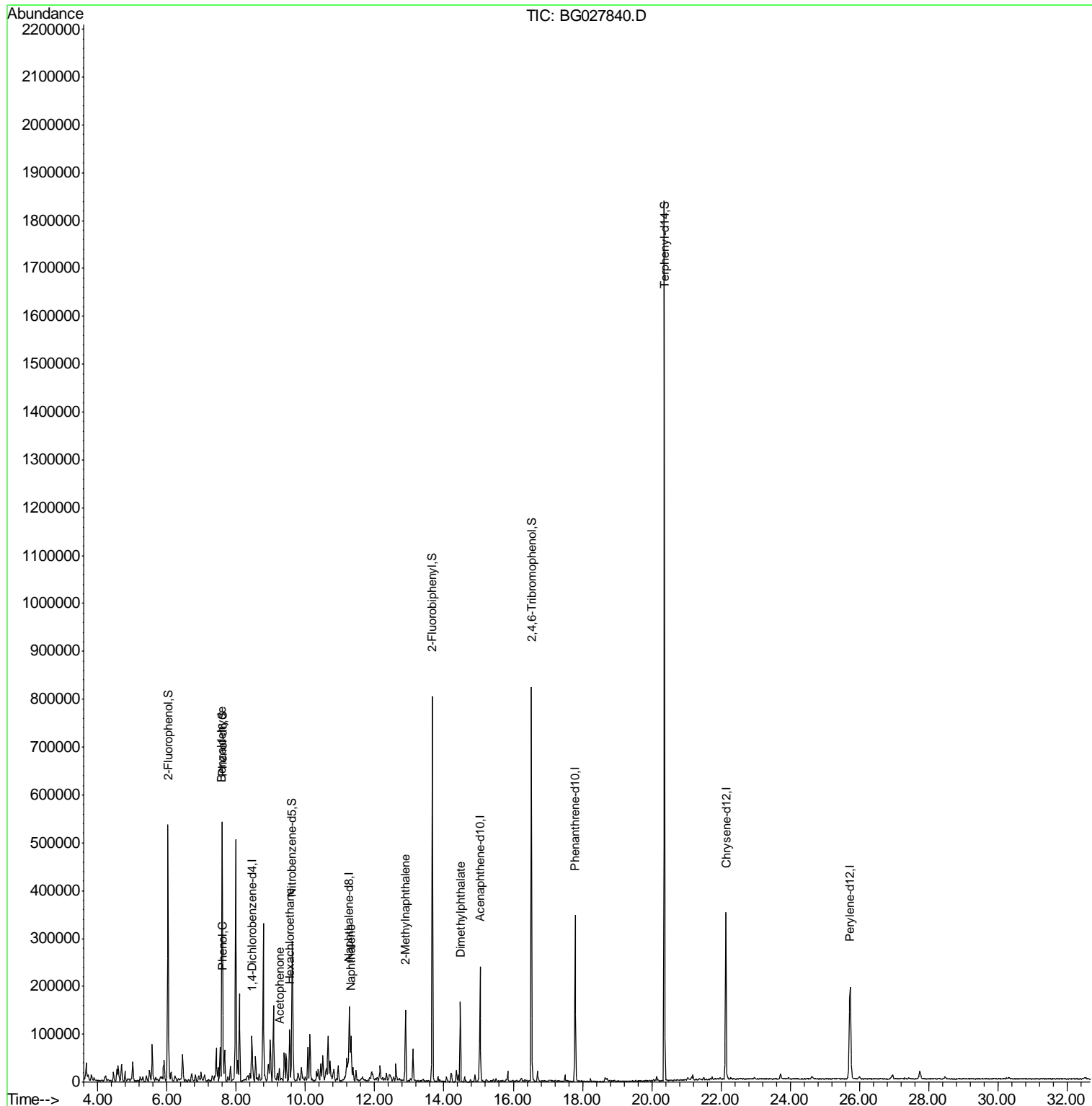
Internal Standards	R.T.	QIon	Response	Conc	Units	Dev(Min)
1) 1,4-Dichlorobenzene-d4	8.45	152	27042	20.00	ng	-0.03
21) Naphthalene-d8	11.27	136	128770	20.00	ng	-0.02
38) Acenaphthene-d10	15.04	164	84048	20.00	ng	-0.02
63) Phenanthrene-d10	17.79	188	223548	20.00	ng	-0.02
75) Chrysene-d12	22.15	240	241239	20.00	ng	-0.03
86) Perylene-d12	25.73	264	241473	20.00	ng	-0.06
System Monitoring Compounds						
5) 2-Fluorophenol	6.03	112	221041	125.87	ng	-0.03
7) Phenol-d6	7.60	99	299680	111.71	ng	-0.02
23) Nitrobenzene-d5	9.62	82	169955	73.57	ng	-0.02
41) 2,4,6-Tribromophenol	16.53	330	179199	155.45	ng	-0.02
44) 2-Fluorobiphenyl	13.67	172	438868	74.57	ng	-0.02
78) Terphenyl-d14	20.37	244	832347	80.89	ng	-0.02
Target Compounds						
9) Benzaldehyde	7.59	77	3663	2.29	ng	# 1
10) Phenol	7.62	94	6281	2.37	ng	75
18) Hexachloroethane	9.55	117	9492	12.48	ng	# 1
22) Acetophenone	9.25	105	19883	6.40	ng	# 46
31) Naphthalene	11.32	128	60443	8.83	ng	96
37) 2-Methylnaphthalene	12.89	142	73048	14.32	ng	94
49) Dimethylphthalate	14.48	163	110956	15.48	ng	95

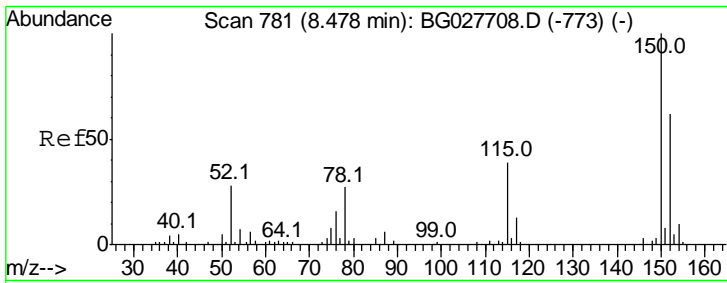
(#) = qualifier out of range (m) = manual integration (+) = signals summed

Data Path : Z:\HPCHEM1\BNA G\DATA\BG070317\
 Data File : BG027840.D
 Acq On : 3 Jul 2017 20:13
 Operator : SJ/JU
 Sample : I3997-01
 Misc :
 ALS Vial : 12 Sample Multiplier: 1

Instrument :
 BNA_G
 ClientSampleId :

Quant Time: Jul 04 05:50:21 2017
 Quant Method : Z:\HPCHEM1\BNA G\METHODS\8270-BG062817.M
 Quant Title : ASP BNA STANDARDS FOR 5 POINT CALIBRATION
 QLast Update : Wed Jun 28 19:26:37 2017
 Response via : Initial Calibration

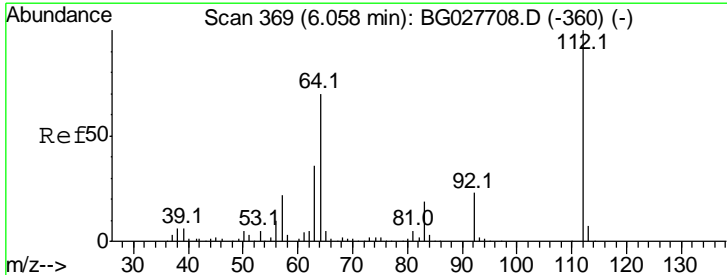
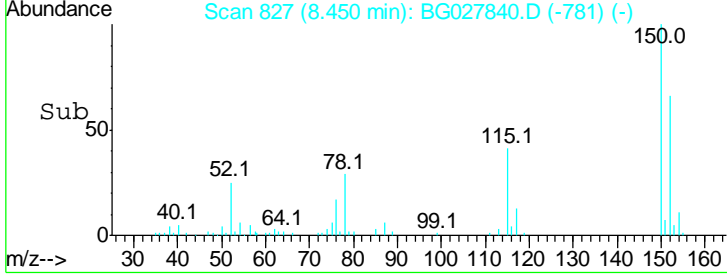
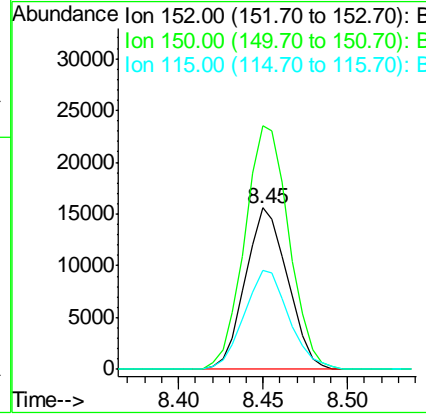
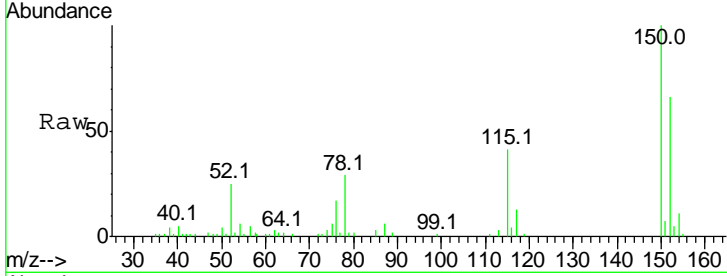




#1
 1,4-Dichlorobenzene-d4
 Concen: 20.00 ng
 RT: 8.45 min Scan# 827
 Delta R.T. -0.03 min
 Lab File: BG027840.D
 Acq: 3 Jul 2017 20:13

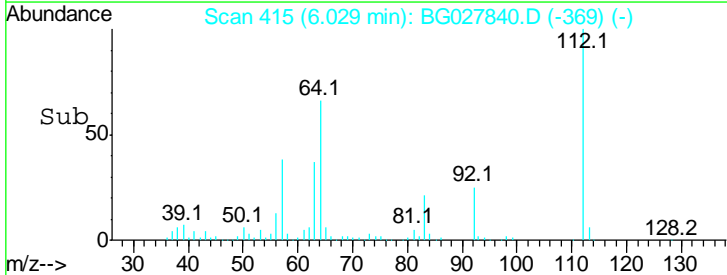
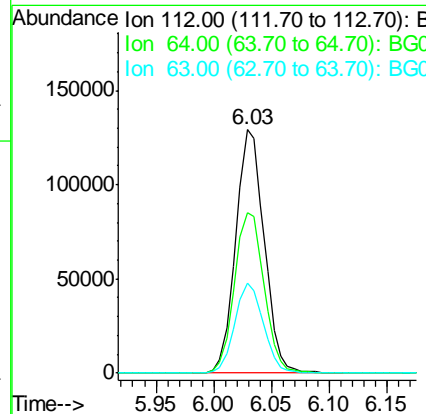
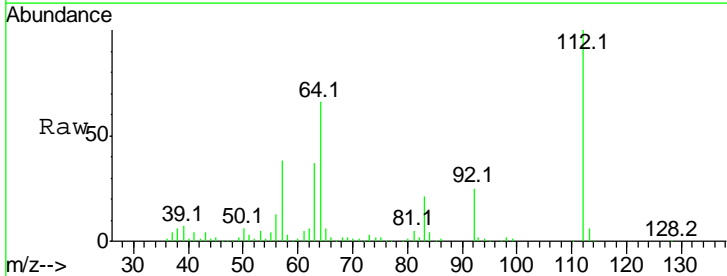
Instrument :
 BNA_G
 ClientSampled :

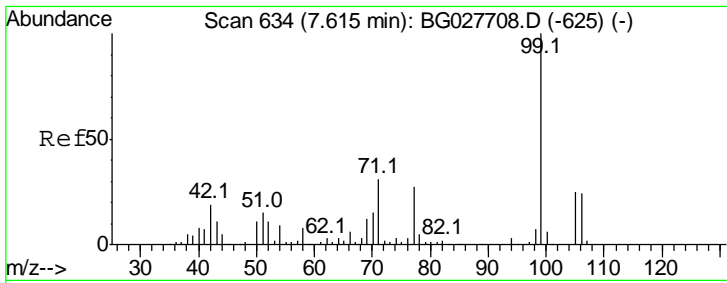
Tgt Ion	Resp	Lower	Upper
152	100		
150	150.8	114.0	171.0
115	61.6	48.1	72.1



#5
 2-Fluorophenol
 Concen: 125.87 ng
 RT: 6.03 min Scan# 415
 Delta R.T. -0.03 min
 Lab File: BG027840.D
 Acq: 3 Jul 2017 20:13

Tgt Ion	Resp	Lower	Upper
112	100		
64	66.0	61.8	92.6
63	37.0	37.2	55.8#

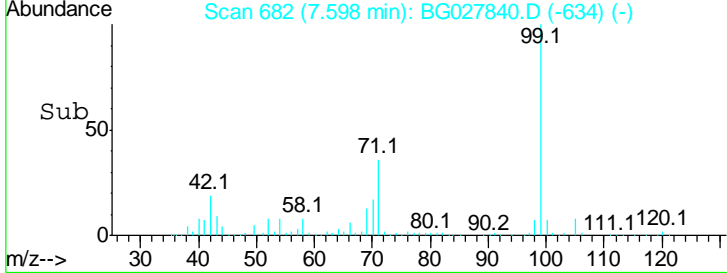
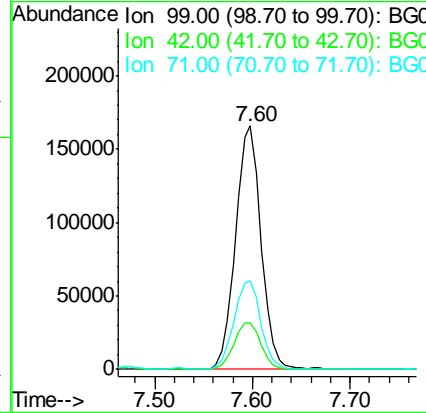
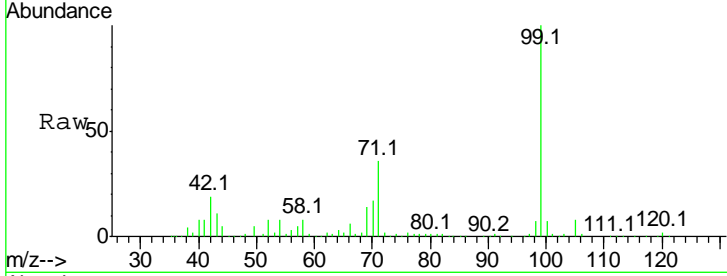




#7
 Phenol-d6
 Concen: 111.71 ng
 RT: 7.60 min Scan# 682
 Delta R.T. -0.02 min
 Lab File: BG027840.D
 Acq: 3 Jul 2017 20:13

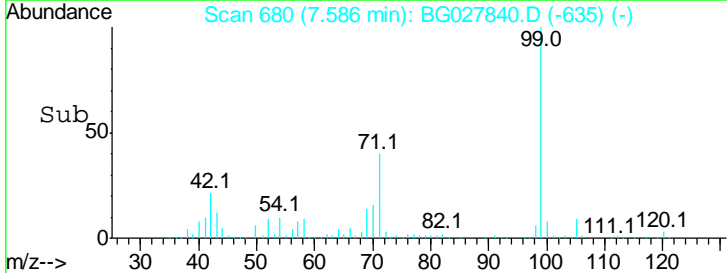
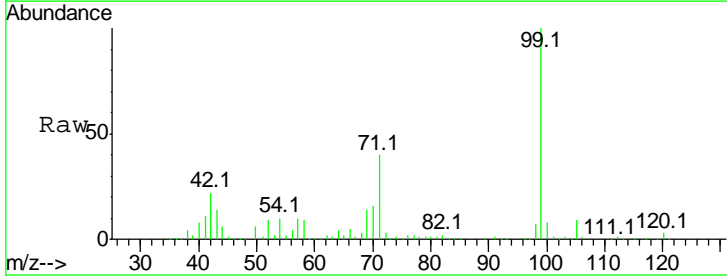
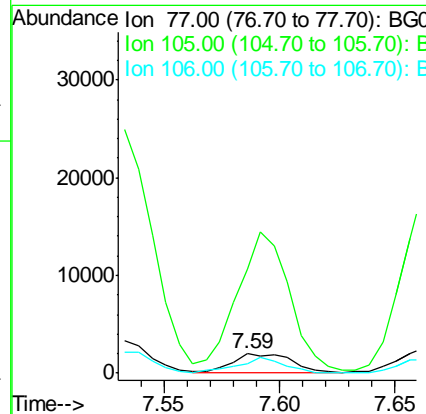
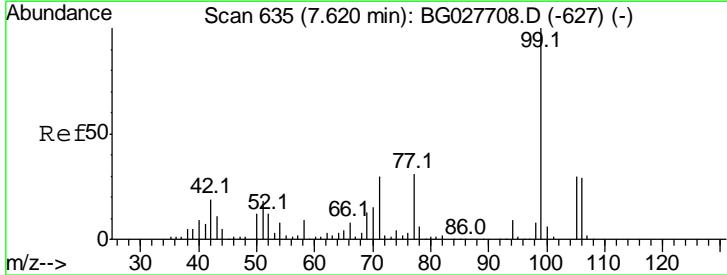
Instrument :
 BNA_G
 ClientSampled :

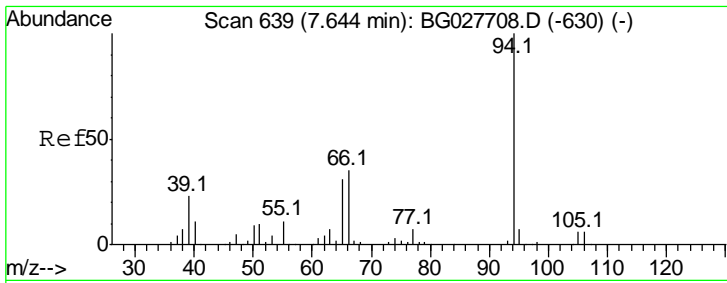
Tgt Ion	Resp	Lower	Upper
99	100		
42	19.2	20.5	30.7#
71	36.4	37.6	56.4#



#9
 Benzaldehyde
 Concen: 2.29 ng
 RT: 7.59 min Scan# 680
 Delta R.T. -0.03 min
 Lab File: BG027840.D
 Acq: 3 Jul 2017 20:13

Tgt Ion	Resp	Lower	Upper
77	100		
105	541.4	60.9	100.9#
106	47.2	55.1	95.1#

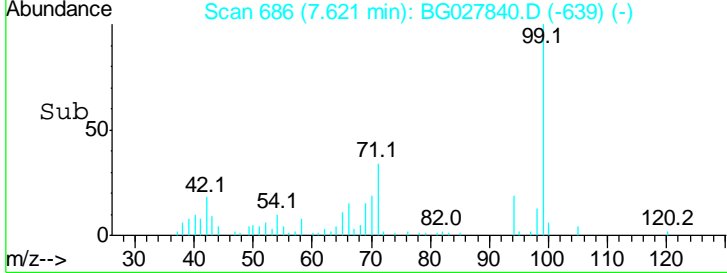
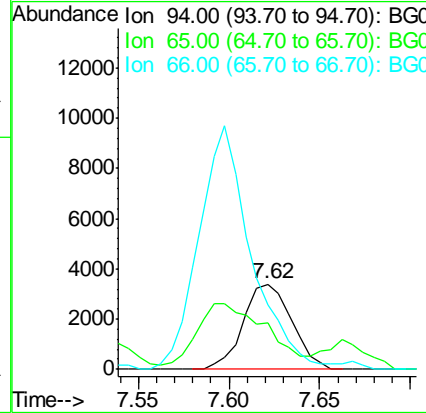
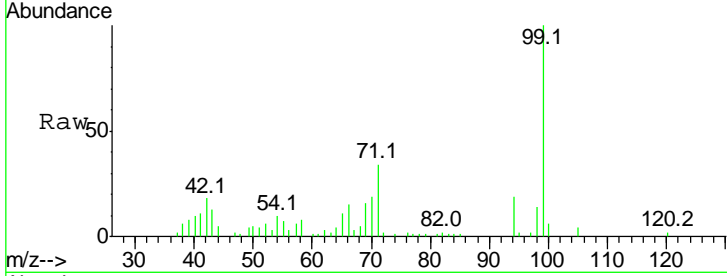




#10
 Phenol
 Concen: 2.37 ng
 RT: 7.62 min Scan# 686
 Delta R.T. -0.02 min
 Lab File: BG027840.D
 Acq: 3 Jul 2017 20:13

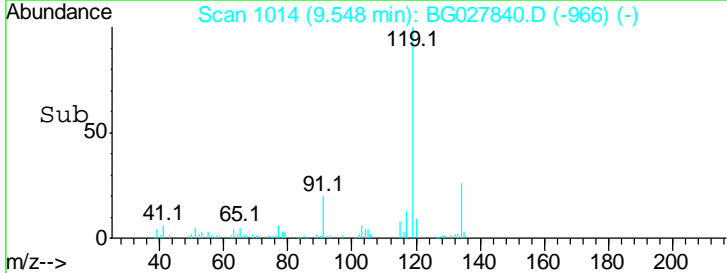
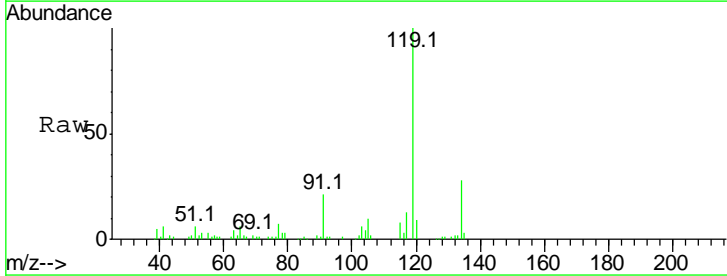
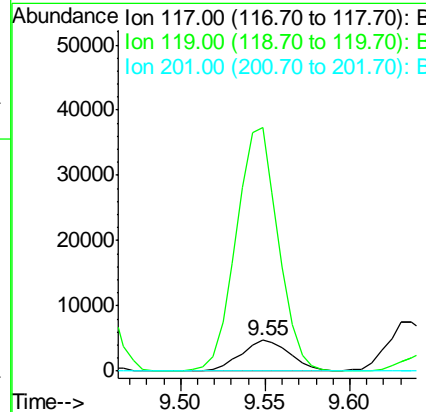
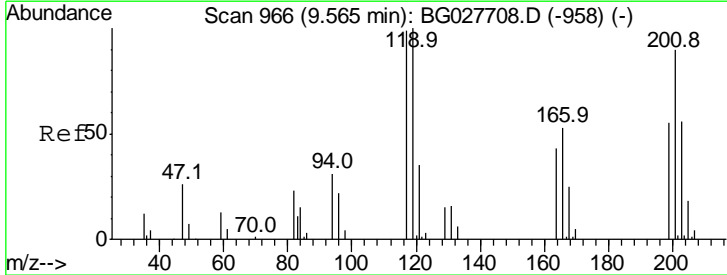
Instrument :
 BNA_G
 ClientSampled :

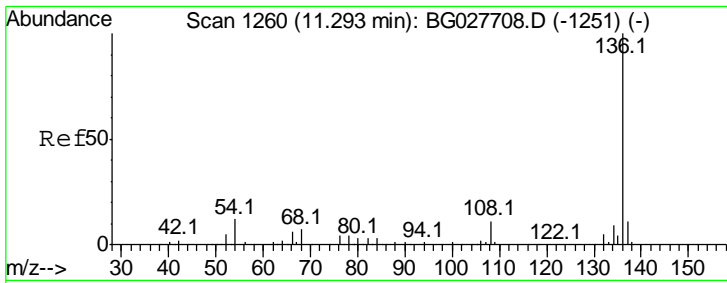
Tgt Ion	Resp	Lower	Upper
94	100		
65	54.6	20.6	60.6
66	74.9	35.5	75.5



#18
 Hexachloroethane
 Concen: 12.48 ng
 RT: 9.55 min Scan# 1014
 Delta R.T. -0.02 min
 Lab File: BG027840.D
 Acq: 3 Jul 2017 20:13

Tgt Ion	Resp	Lower	Upper
117	100		
119	788.3	69.8	104.6#
201	0.0	95.4	143.0#



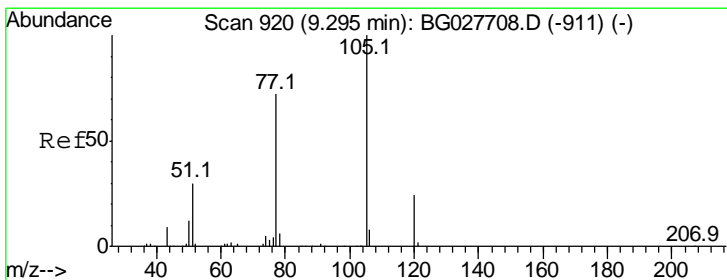
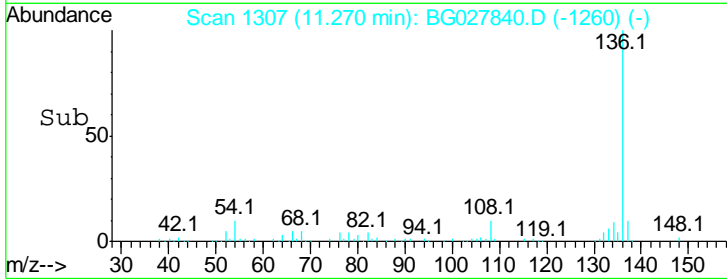
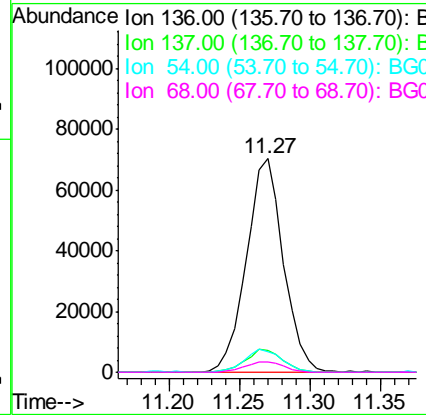
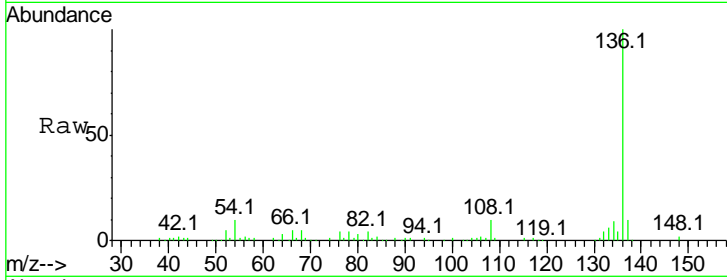


#21
 Naphthalene-d8
 Concen: 20.00 ng
 RT: 11.27 min Scan# 1307
 Delta R.T. -0.02 min
 Lab File: BG027840.D
 Acq: 3 Jul 2017 20:13

Instrument :
 BNA_G
 ClientSampled :

Tgt Ion:136 Resp: 128770

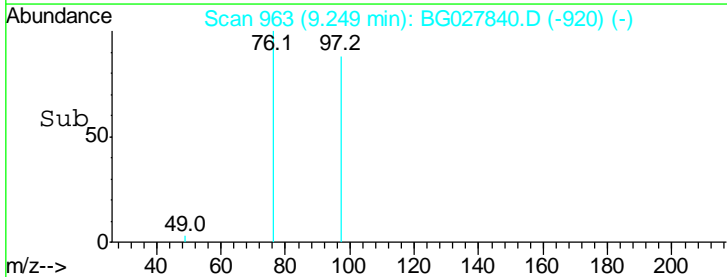
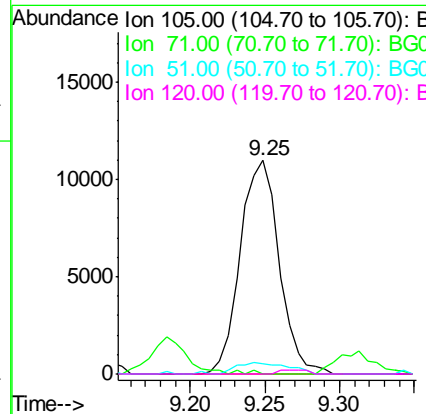
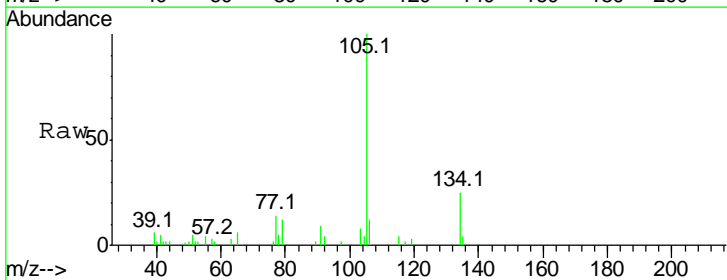
Ion	Ratio	Lower	Upper
136	100		
137	10.2	8.9	13.3
54	9.6	9.3	13.9
68	4.6	5.1	7.7#

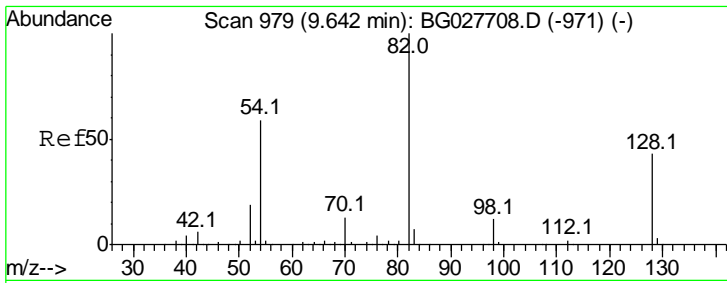


#22
 Acetophenone
 Concen: 6.40 ng
 RT: 9.25 min Scan# 963
 Delta R.T. -0.05 min
 Lab File: BG027840.D
 Acq: 3 Jul 2017 20:13

Tgt Ion:105 Resp: 19883

Ion	Ratio	Lower	Upper
105	100		
71	0.0	0.9	1.3#
51	4.8	34.0	51.0#
120	0.0	17.3	25.9#

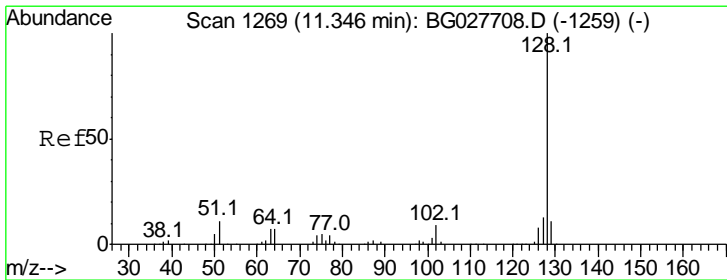
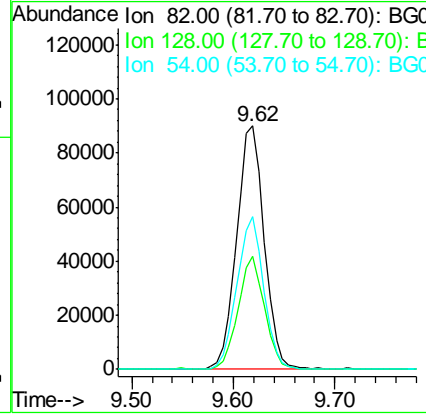
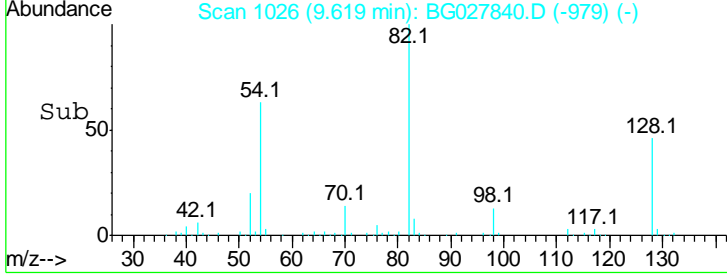
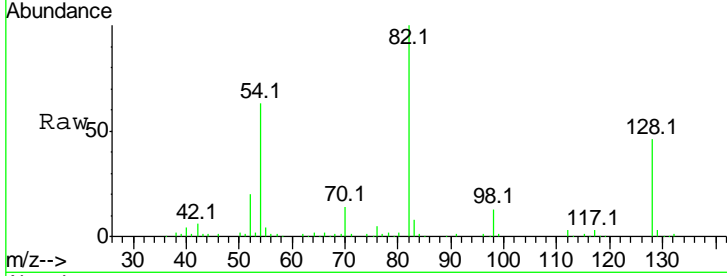




#23
 Nitrobenzene-d5
 Concen: 73.57 ng
 RT: 9.62 min Scan# 1026
 Delta R.T. -0.02 min
 Lab File: BG027840.D
 Acq: 3 Jul 2017 20:13

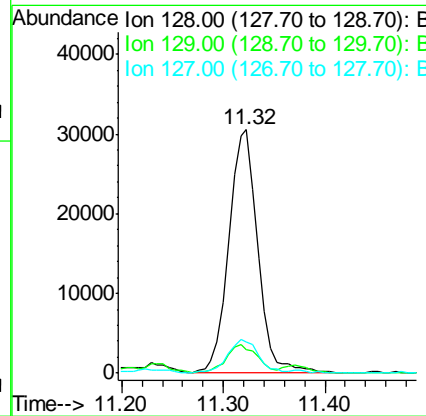
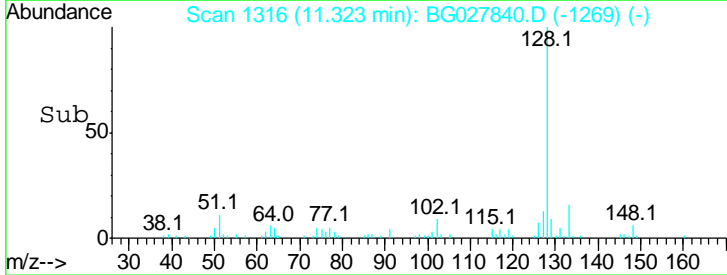
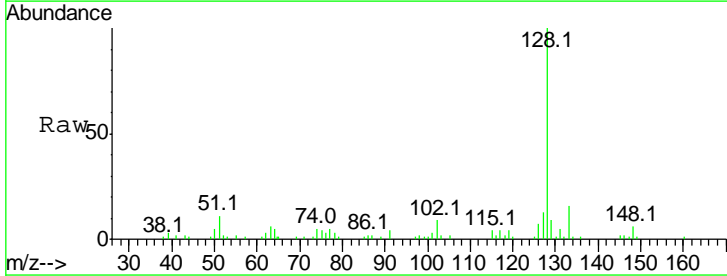
Instrument :
 BNA_G
 ClientSampled :

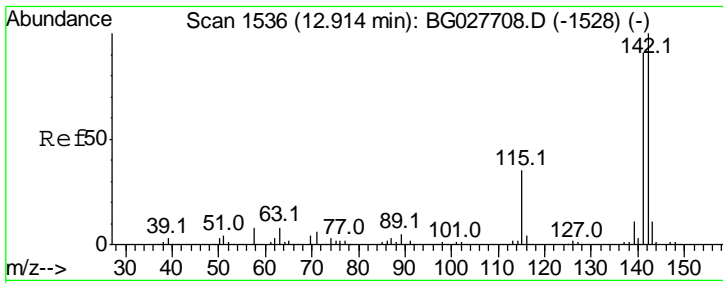
Tgt Ion	Resp	Lower	Upper
82	169955		
128	46.2	26.4	39.6#
54	62.7	49.4	74.2



#31
 Naphthalene
 Concen: 8.83 ng
 RT: 11.32 min Scan# 1316
 Delta R.T. -0.02 min
 Lab File: BG027840.D
 Acq: 3 Jul 2017 20:13

Tgt Ion	Resp	Lower	Upper
128	60443		
129	9.4	9.3	13.9
127	13.0	11.4	17.0

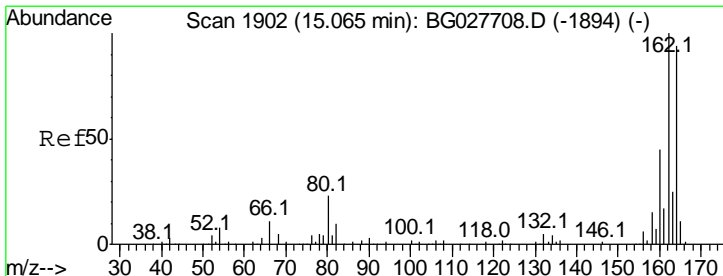
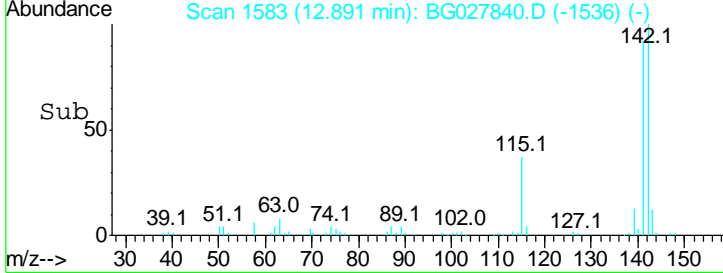
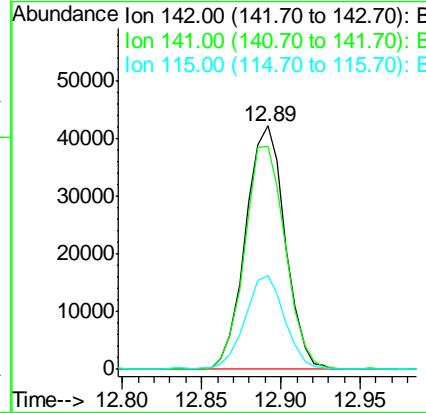
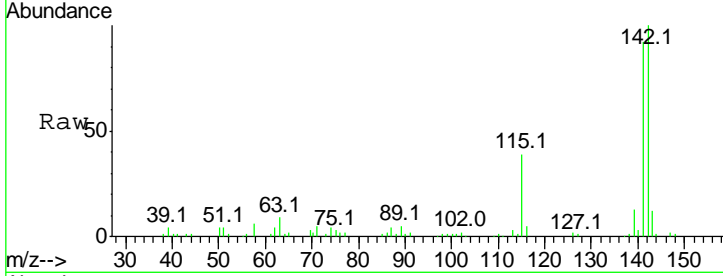




#37
 2-Methylnaphthalene
 Concen: 14.32 ng
 RT: 12.89 min Scan# 1583
 Delta R.T. -0.02 min
 Lab File: BG027840.D
 Acq: 3 Jul 2017 20:13

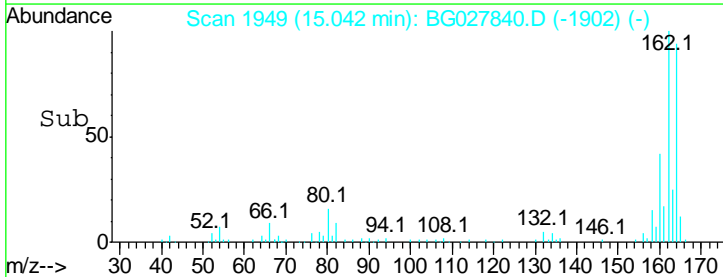
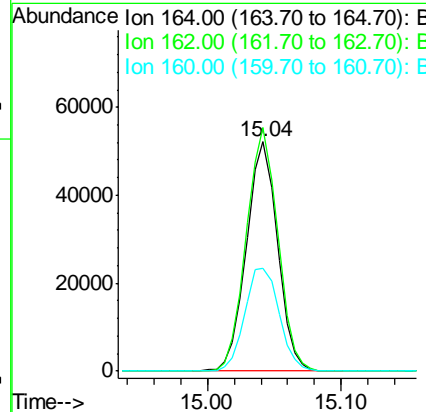
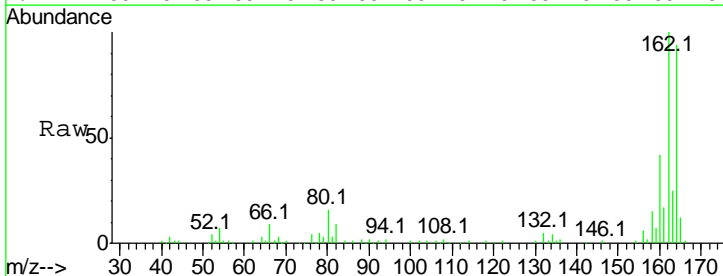
Instrument :
 BNA_G
 ClientSampled :

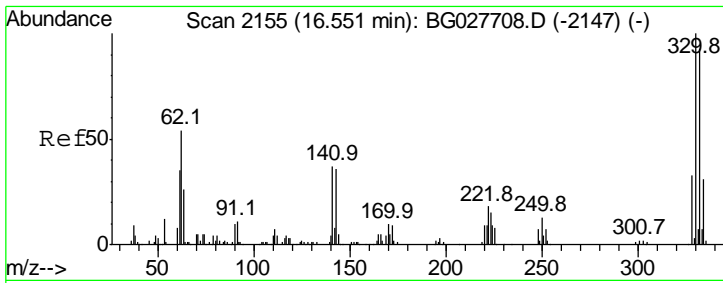
Tgt Ion	Resp	Lower	Upper
142	100		
141	91.9	70.4	105.6
115	38.5	35.5	53.3



#38
 Acenaphthene-d10
 Concen: 20.00 ng
 RT: 15.04 min Scan# 1949
 Delta R.T. -0.02 min
 Lab File: BG027840.D
 Acq: 3 Jul 2017 20:13

Tgt Ion	Resp	Lower	Upper
164	100		
162	106.1	85.1	127.7
160	44.8	34.7	52.1

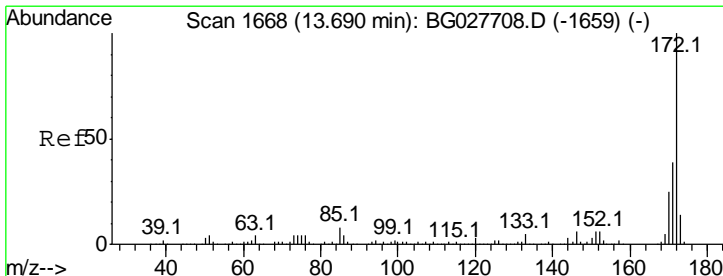
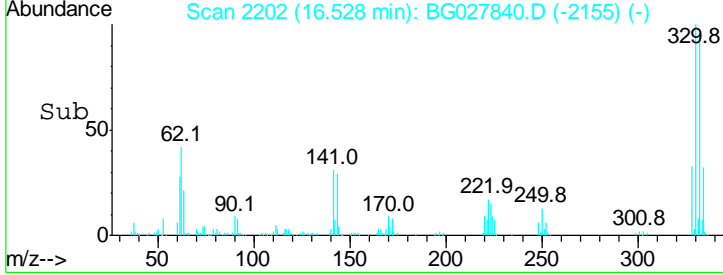
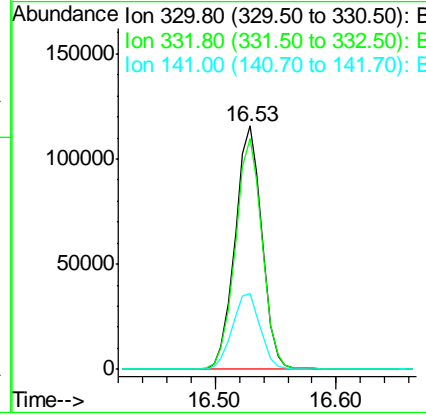
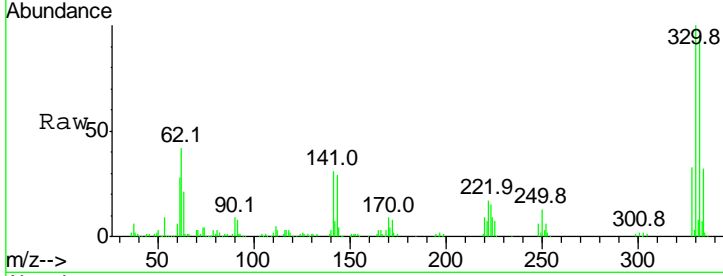




#41
 2,4,6-Tribromophenol
 Concen: 155.45 ng
 RT: 16.53 min Scan# 2202
 Delta R.T. -0.02 min
 Lab File: BG027840.D
 Acq: 3 Jul 2017 20:13

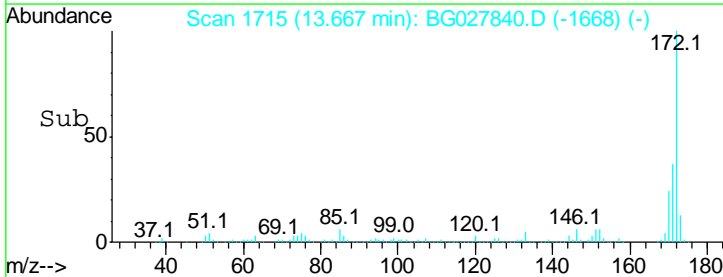
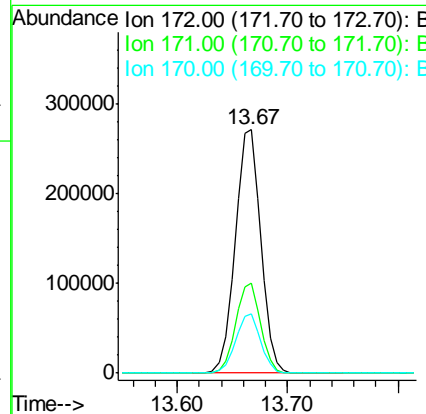
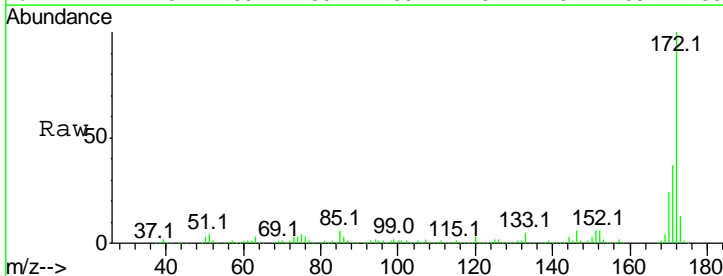
Instrument :
 BNA_G
 ClientSampled :

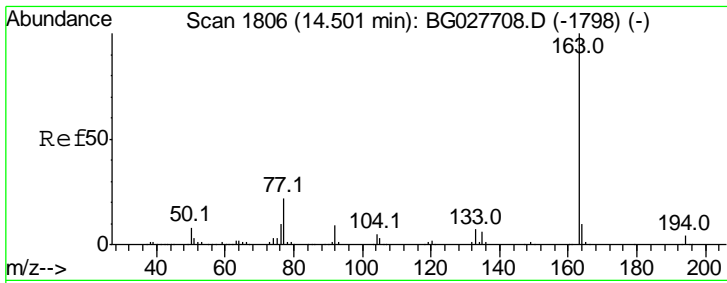
Tgt Ion	Resp	Lower	Upper
330	100		
332	95.2	77.3	115.9
141	32.8	32.1	48.1



#44
 2-Fluorobiphenyl
 Concen: 74.57 ng
 RT: 13.67 min Scan# 1715
 Delta R.T. -0.02 min
 Lab File: BG027840.D
 Acq: 3 Jul 2017 20:13

Tgt Ion	Resp	Lower	Upper
172	100		
171	37.2	32.2	48.2
170	24.3	21.8	32.6

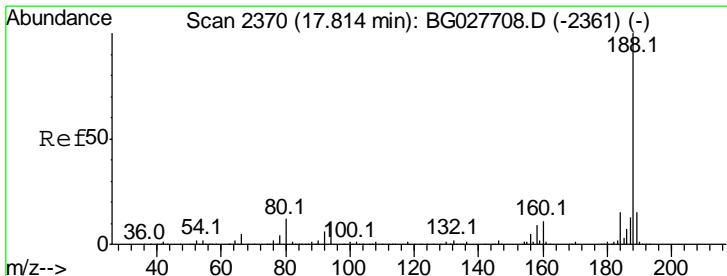
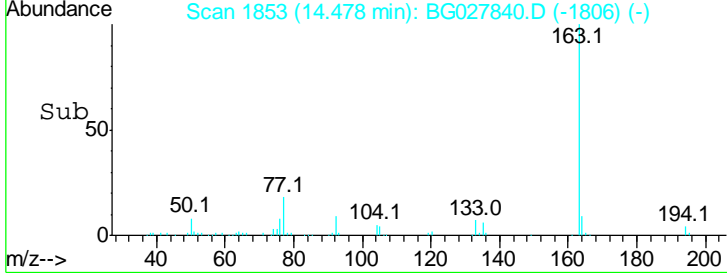
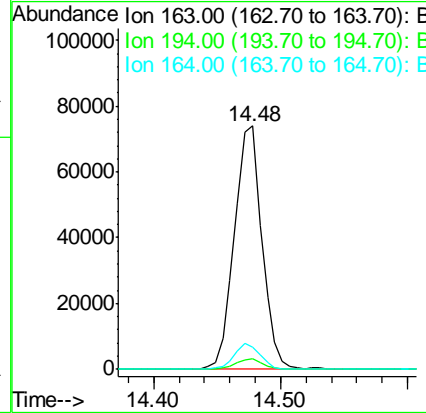
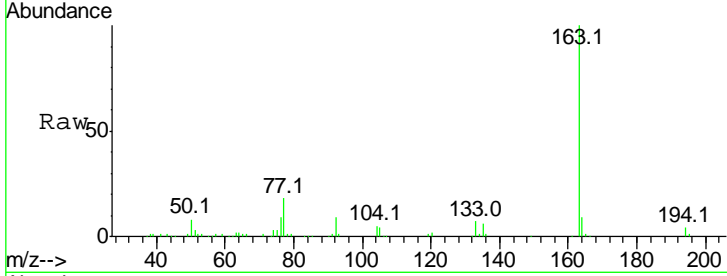




#49
 Dimethylphthalate
 Concen: 15.48 ng
 RT: 14.48 min Scan# 1853
 Delta R.T. -0.02 min
 Lab File: BG027840.D
 Acq: 3 Jul 2017 20:13

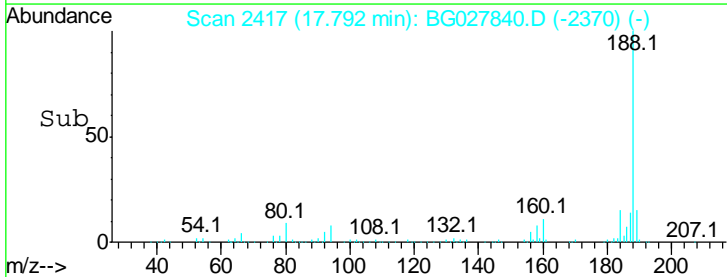
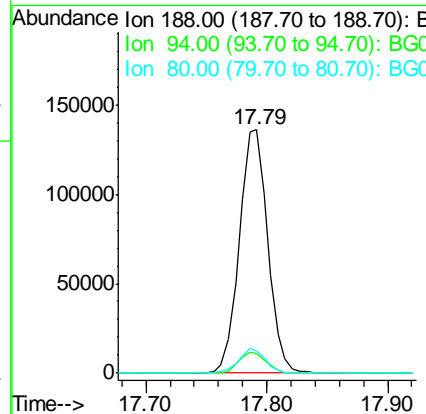
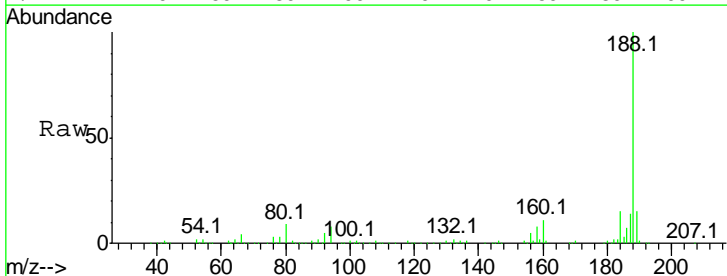
Instrument :
 BNA_G
 ClientSampled :

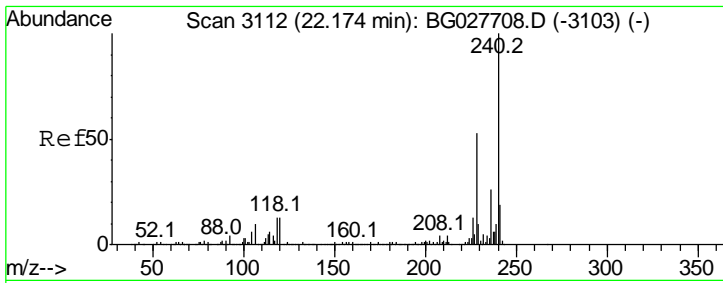
Tgt Ion	Resp	Lower	Upper
163	110956		
194	4.2	3.8	5.6
164	9.3	9.3	13.9



#63
 Phenanthrene-d10
 Concen: 20.00 ng
 RT: 17.79 min Scan# 2417
 Delta R.T. -0.02 min
 Lab File: BG027840.D
 Acq: 3 Jul 2017 20:13

Tgt Ion	Resp	Lower	Upper
188	223548		
94	8.2	5.8	8.8
80	9.1	7.5	11.3



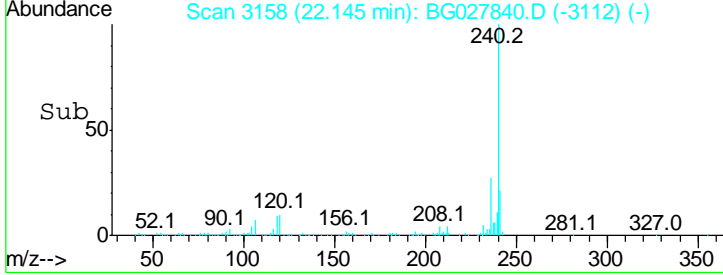
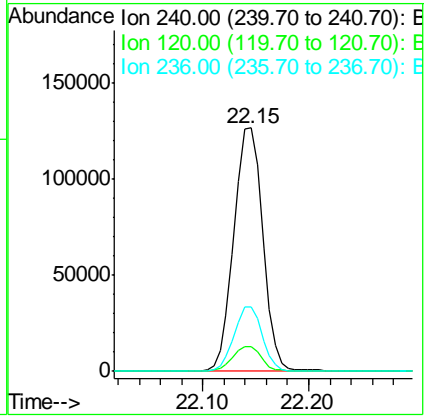
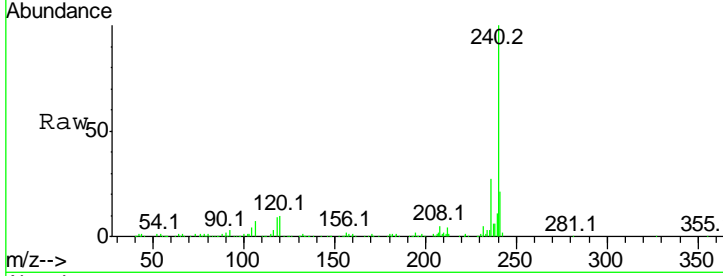


#75
 Chrysene-d12
 Concen: 20.00 ng
 RT: 22.15 min Scan# 3158
 Delta R.T. -0.03 min
 Lab File: BG027840.D
 Acq: 3 Jul 2017 20:13

Instrument :
 BNA_G
 ClientSampled :

Tgt Ion: 240 Resp: 241239

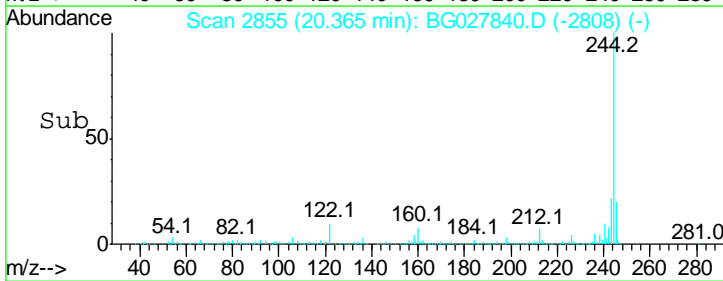
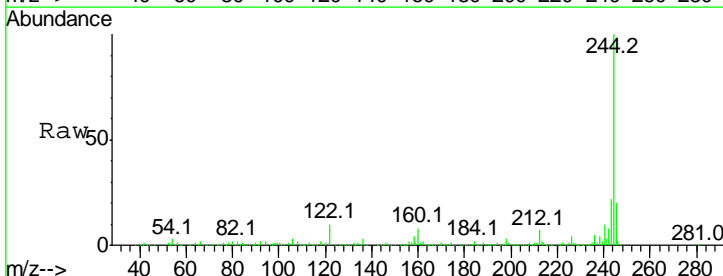
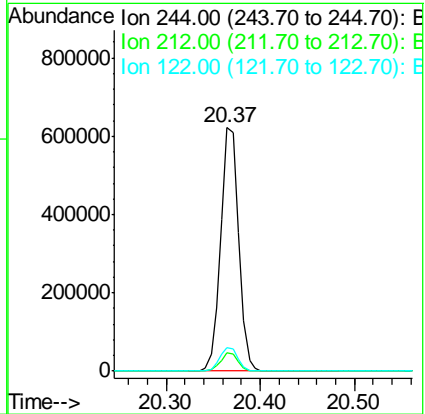
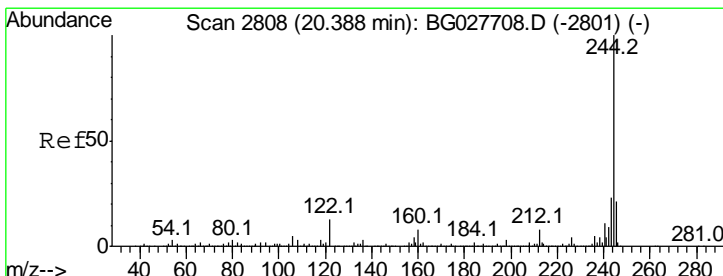
Ion	Ratio	Lower	Upper
240	100		
120	10.4	5.7	8.5#
236	26.6	22.2	33.4

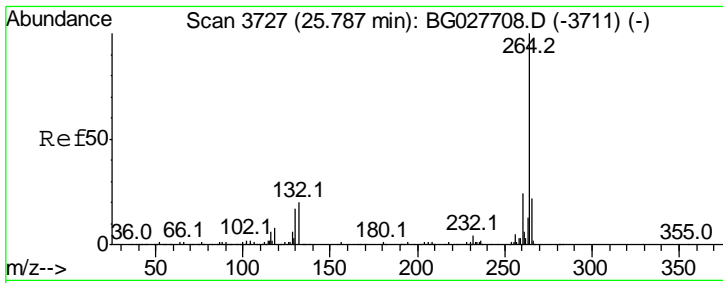


#78
 Terphenyl-d14
 Concen: 80.89 ng
 RT: 20.37 min Scan# 2855
 Delta R.T. -0.02 min
 Lab File: BG027840.D
 Acq: 3 Jul 2017 20:13

Tgt Ion: 244 Resp: 832347

Ion	Ratio	Lower	Upper
244	100		
212	7.3	10.0	15.0#
122	9.7	8.6	12.8





#86
 Perylene-d12
 Concen: 20.00 ng
 RT: 25.73 min Scan# 3768
 Delta R.T. -0.06 min
 Lab File: BG027840.D
 Acq: 3 Jul 2017 20:13

Instrument :
 BNA_G
 ClientSampleId :

Tot Ion: 264 Resp: 241473

Ion	Ratio	Lower	Upper
264	100		
260	23.1	21.8	32.8
265	21.3	18.2	27.4

