

Data Path : Z:\HPCHEM1\BNA G\DATA\BG070816\
 Data File : BG022932.D
 Acq On : 8 Jul 2016 15:24
 Operator : UM/SJ
 Sample : H3876-10
 Misc :
 ALS Vial : 32 Sample Multiplier: 1

Instrument :
 BNA_G
 ClientSampleId :

Quant Time: Jul 08 17:37:43 2016
 Quant Method : Z:\HPCHEM1\BNA G\METHODS\8270-BG070816.M
 Quant Title : ASP BNA STANDARDS FOR 5 POINT CALIBRATION
 QLast Update : Thu Jul 07 16:51:07 2016
 Response via : Initial Calibration

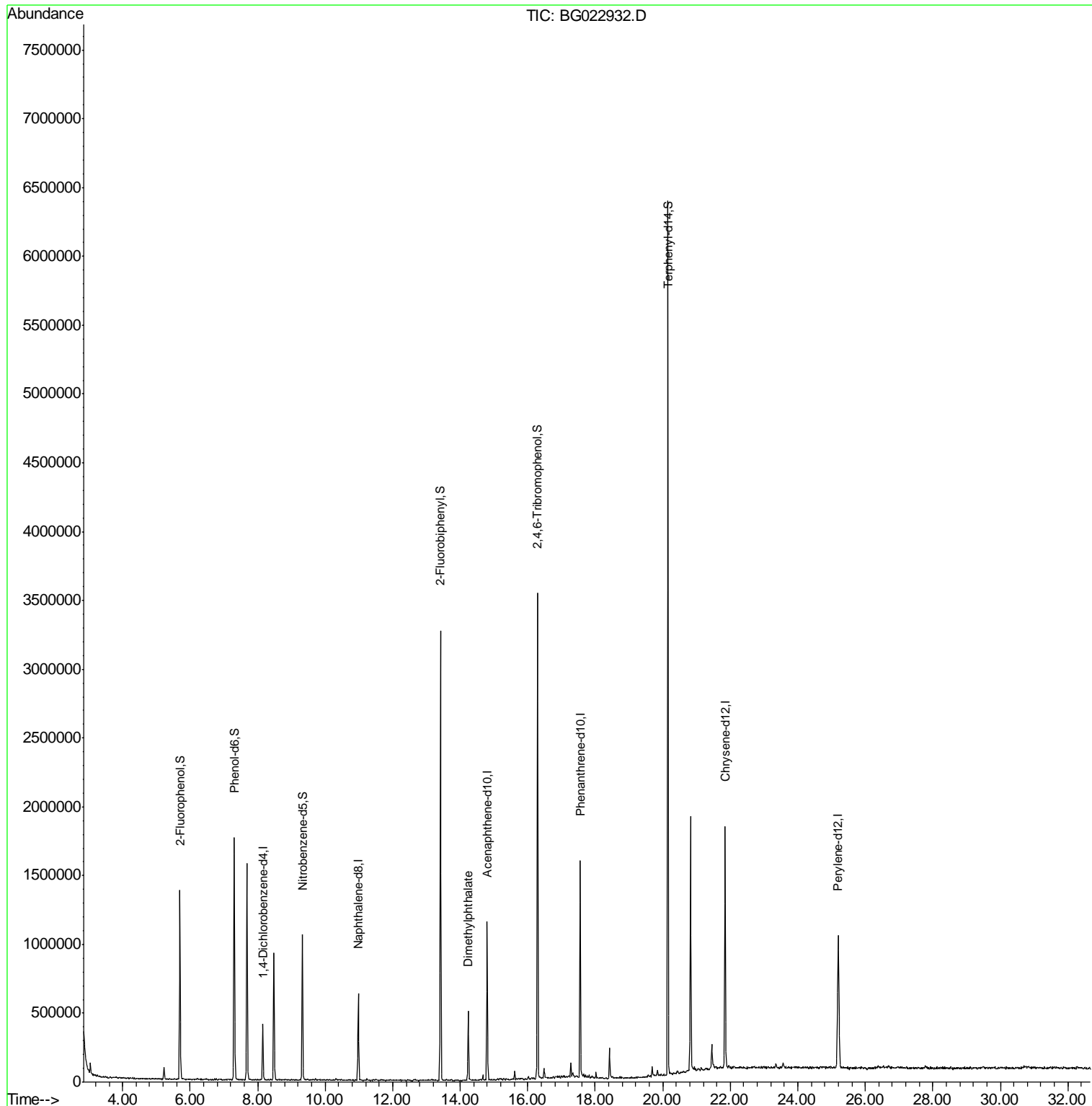
Internal Standards	R.T.	QIon	Response	Conc	Units	Dev(Min)
1) 1,4-Dichlorobenzene-d4	8.16	152	103383	20.00	ng	0.00
21) Naphthalene-d8	10.98	136	496033	20.00	ng	0.00
38) Acenaphthene-d10	14.80	164	390993	20.00	ng	0.00
63) Phenanthrene-d10	17.55	188	957672	20.00	ng	0.00
75) Chrysene-d12	21.85	240	1070942	20.00	ng	0.00
86) Perylene-d12	25.20	264	1100077	20.00	ng	0.02
System Monitoring Compounds						
5) 2-Fluorophenol	5.70	112	559138	88.46	ng	0.00
7) Phenol-d6	7.31	99	989795	99.97	ng	0.00
23) Nitrobenzene-d5	9.33	82	697253	60.19	ng	0.00
41) 2,4,6-Tribromophenol	16.29	330	651036	92.65	ng	0.00
44) 2-Fluorobiphenyl	13.42	172	1531313	61.69	ng	0.00
78) Terphenyl-d14	20.16	244	2524848	69.82	ng	0.00
Target Compounds						Qvalue
49) Dimethylphthalate	14.24	163	307781	9.64	ng	99

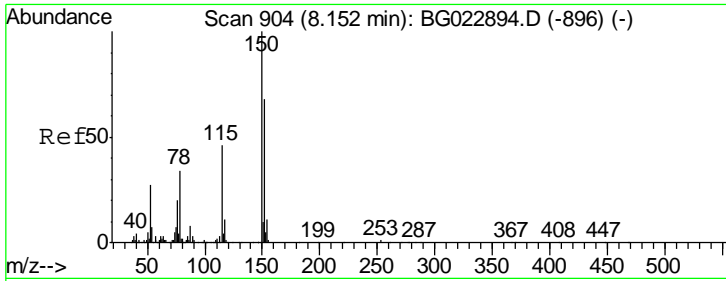
(#) = qualifier out of range (m) = manual integration (+) = signals summed

Data Path : Z:\HPCHEM1\BNA G\DATA\BG070816\
 Data File : BG022932.D
 Acq On : 8 Jul 2016 15:24
 Operator : UM/SJ
 Sample : H3876-10
 Misc :
 ALS Vial : 32 Sample Multiplier: 1

Instrument :
 BNA_G
 ClientSampleId :

Quant Time: Jul 08 17:37:43 2016
 Quant Method : Z:\HPCHEM1\BNA G\METHODS\8270-BG070816.M
 Quant Title : ASP BNA STANDARDS FOR 5 POINT CALIBRATION
 QLast Update : Thu Jul 07 16:51:07 2016
 Response via : Initial Calibration

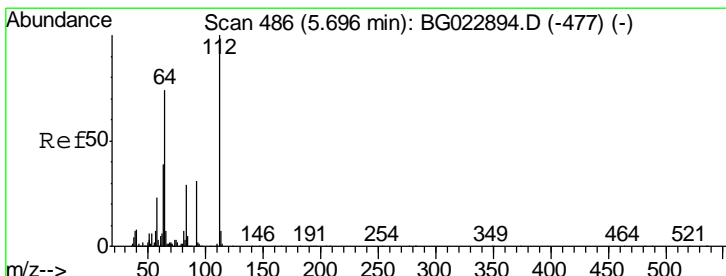
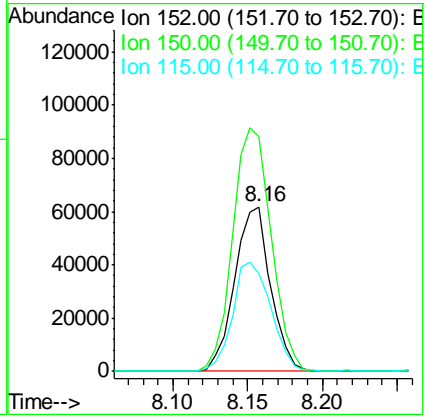
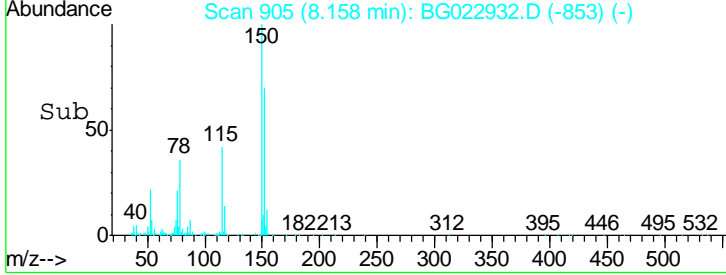
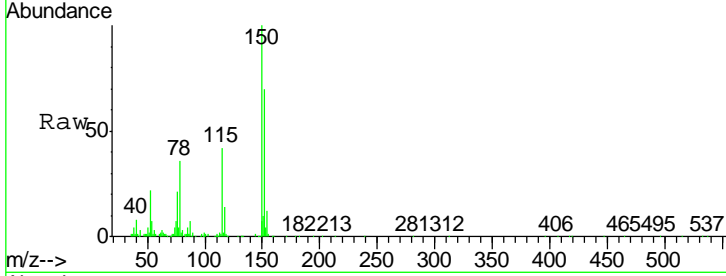




#1
 1,4-Dichlorobenzene-d4
 Concen: 20.00 ng
 RT: 8.16 min Scan# 905
 Delta R.T. 0.01 min
 Lab File: BG022932.D
 Acq: 8 Jul 2016 15:24

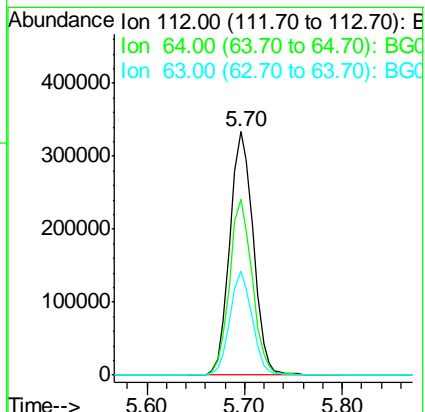
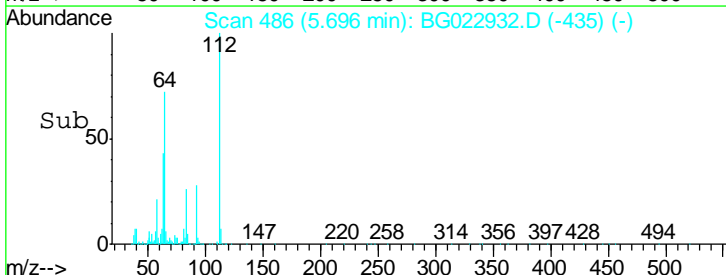
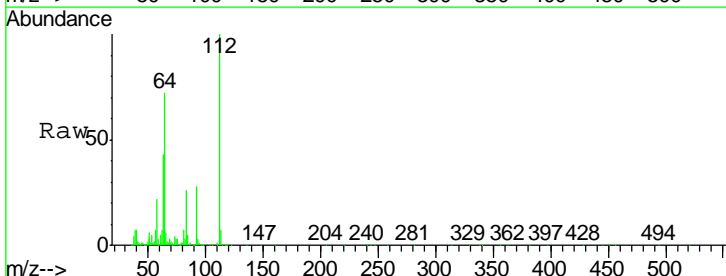
Instrument :
 BNA_G
 ClientSampled :

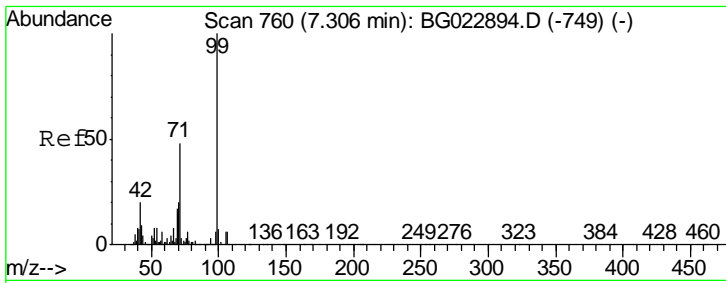
Tgt Ion	Resp	Lower	Upper
152	103383		
152	100		
150	142.2	144.7	217.1#
115	59.1	64.0	96.0#



#5
 2-Fluorophenol
 Concen: 88.46 ng
 RT: 5.70 min Scan# 486
 Delta R.T. 0.00 min
 Lab File: BG022932.D
 Acq: 8 Jul 2016 15:24

Tgt Ion	Resp	Lower	Upper
112	559138		
112	100		
64	72.4	59.0	88.4
63	42.7	37.8	56.8

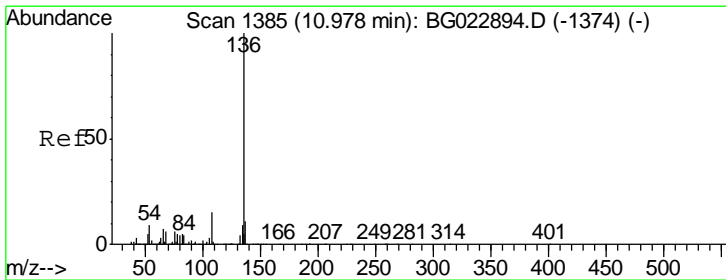
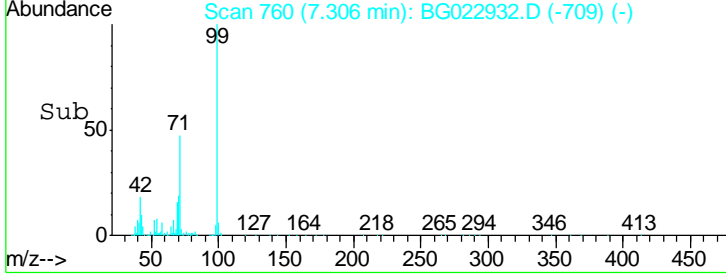
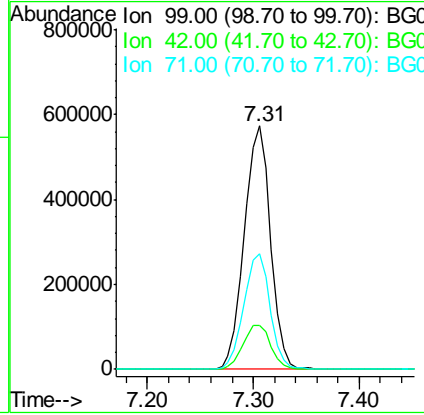
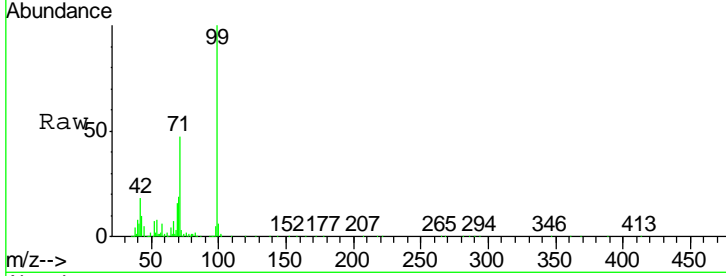




#7
 Phenol-d6
 Concen: 99.97 ng
 RT: 7.31 min Scan# 760
 Delta R.T. -0.00 min
 Lab File: BG022932.D
 Acq: 8 Jul 2016 15:24

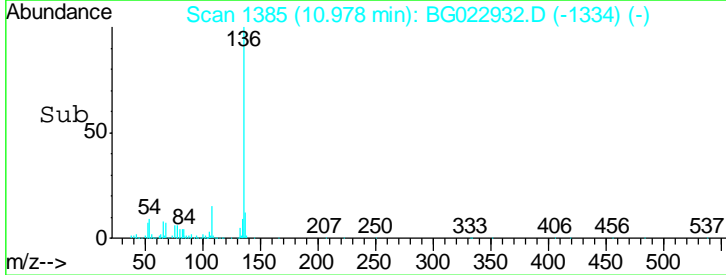
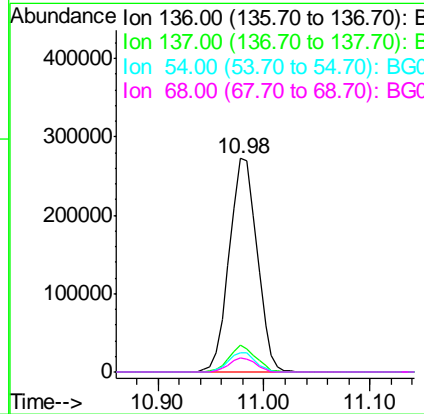
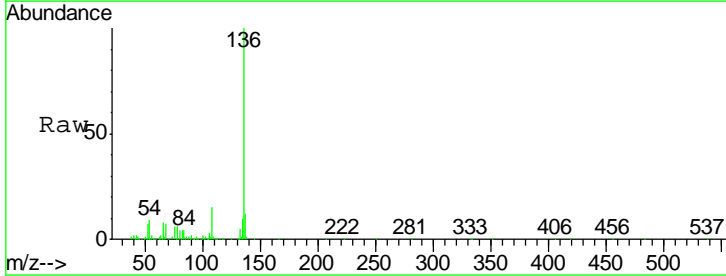
Instrument :
 BNA_G
 ClientSampled :

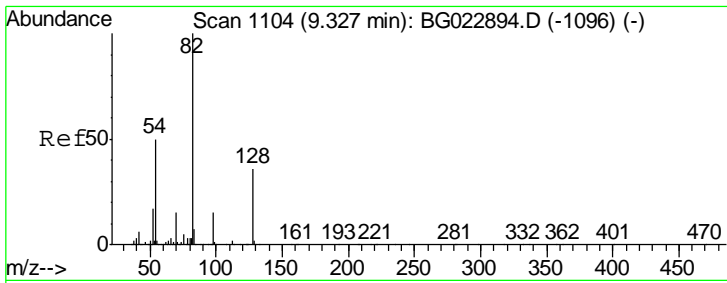
Tgt Ion	Resp	Lower	Upper
99	100		
42	18.2	17.8	26.6
71	47.5	41.5	62.3



#21
 Naphthalene-d8
 Concen: 20.00 ng
 RT: 10.98 min Scan# 1385
 Delta R.T. -0.00 min
 Lab File: BG022932.D
 Acq: 8 Jul 2016 15:24

Tgt Ion	Resp	Lower	Upper
136	100		
137	12.5	9.6	14.4
54	8.8	7.3	10.9
68	6.6	5.3	7.9

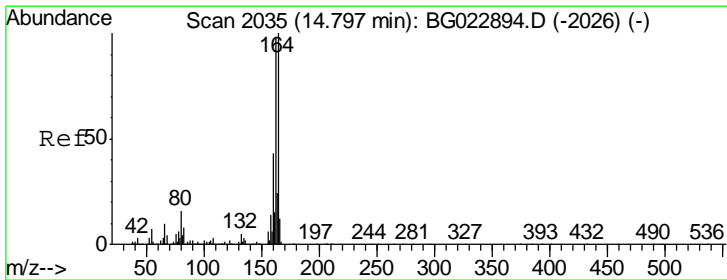
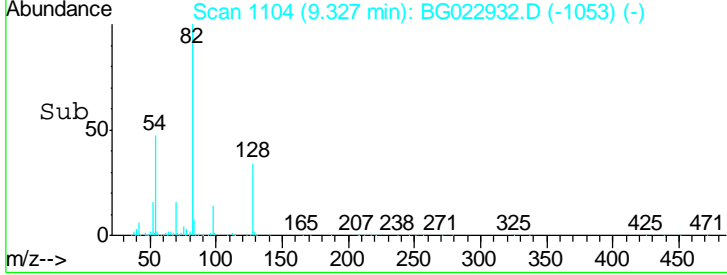
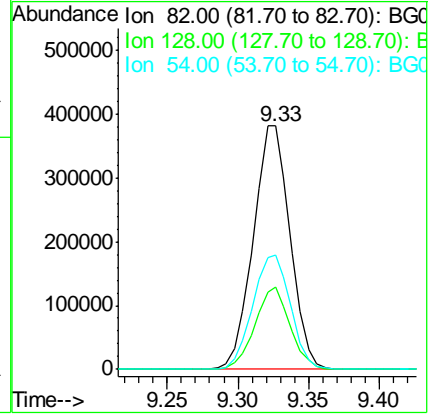
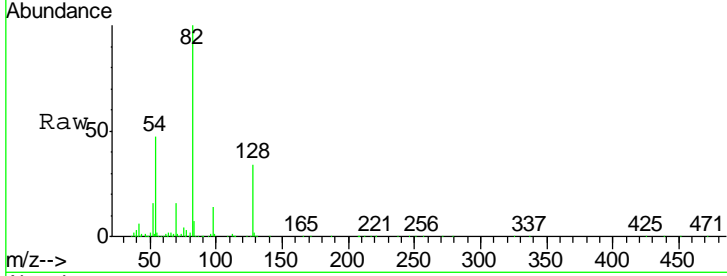




#23
 Nitrobenzene-d5
 Concen: 60.19 ng
 RT: 9.33 min Scan# 1104
 Delta R.T. -0.00 min
 Lab File: BG022932.D
 Acq: 8 Jul 2016 15:24

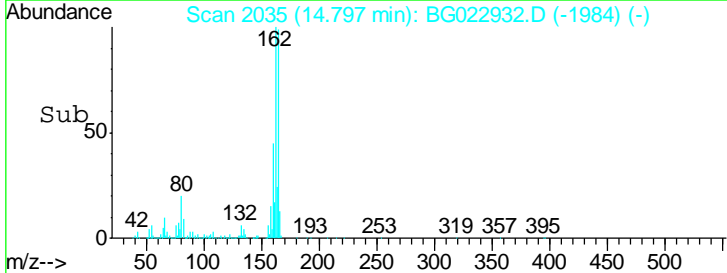
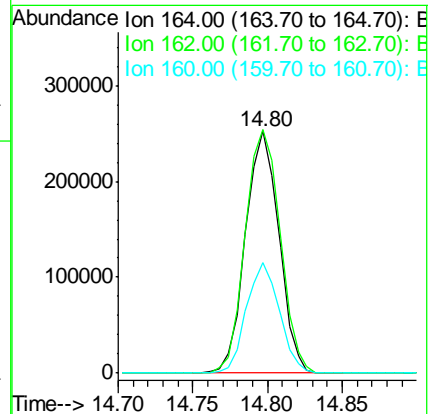
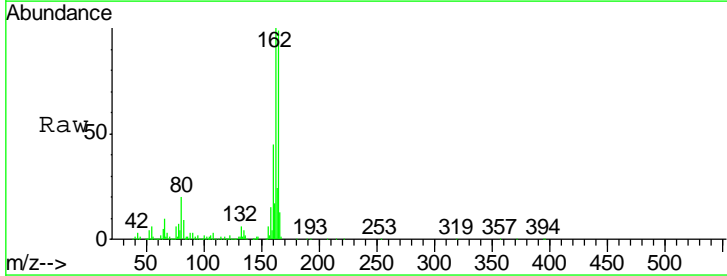
Instrument :
 BNA_G
 ClientSampled :

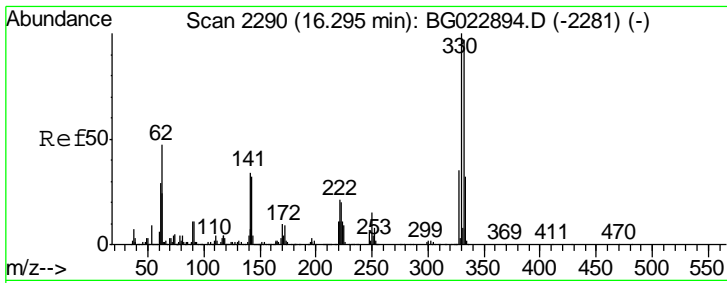
Tgt Ion	Resp	Lower	Upper
82	697253		
128	34.1	24.4	36.6
54	47.0	41.4	62.0



#38
 Acenaphthene-d10
 Concen: 20.00 ng
 RT: 14.80 min Scan# 2035
 Delta R.T. -0.00 min
 Lab File: BG022932.D
 Acq: 8 Jul 2016 15:24

Tgt Ion	Resp	Lower	Upper
164	390993		
162	100.6	87.7	131.5
160	45.6	37.2	55.8

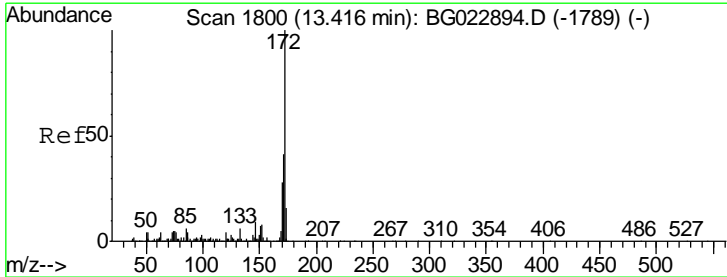
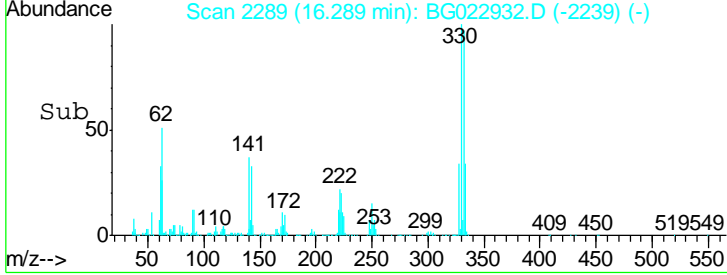
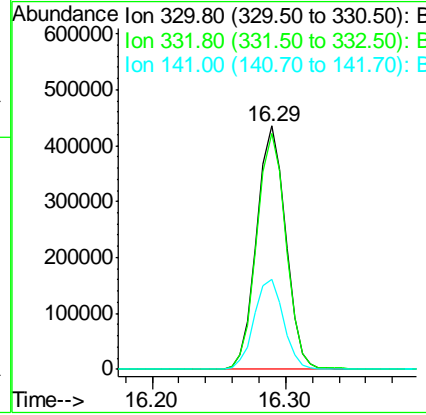
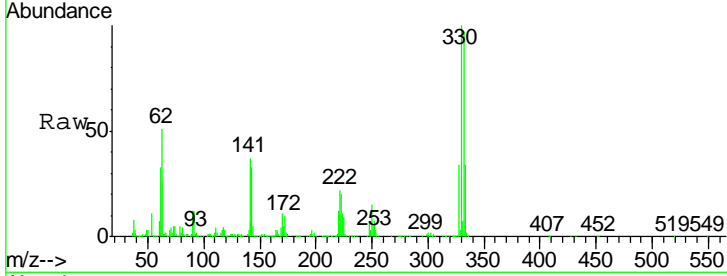




#41
 2,4,6-Tribromophenol
 Concen: 92.65 ng
 RT: 16.29 min Scan# 2289
 Delta R.T. -0.01 min
 Lab File: BG022932.D
 Acq: 8 Jul 2016 15:24

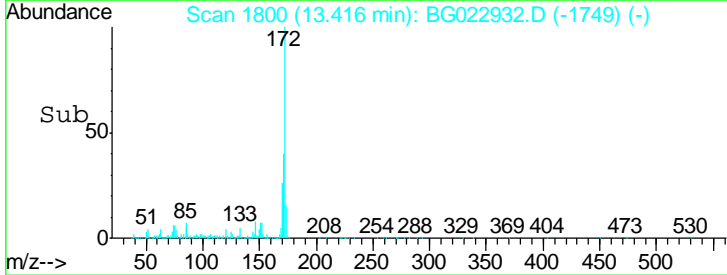
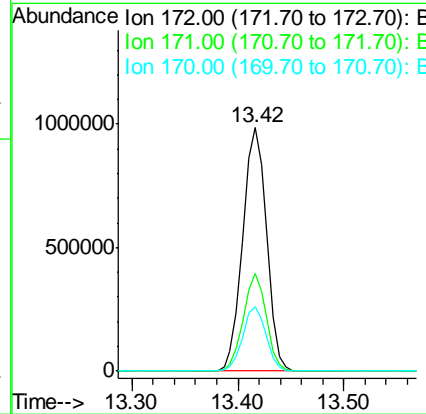
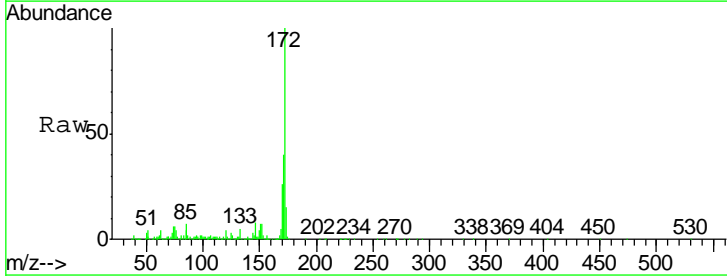
Instrument :
 BNA_G
 ClientSampled :

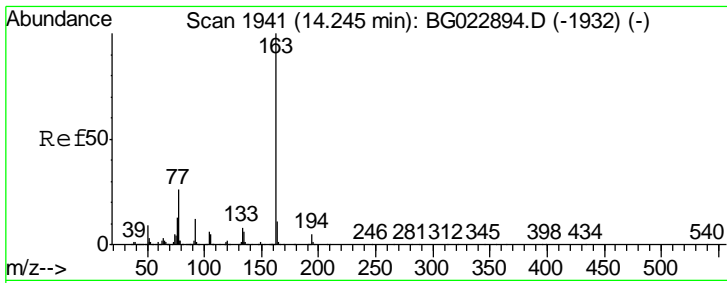
Tgt Ion	Resp	Lower	Upper
330	100		
332	97.5	77.4	116.2
141	37.4	31.7	47.5



#44
 2-Fluorobiphenyl
 Concen: 61.69 ng
 RT: 13.42 min Scan# 1800
 Delta R.T. -0.00 min
 Lab File: BG022932.D
 Acq: 8 Jul 2016 15:24

Tgt Ion	Resp	Lower	Upper
172	100		
171	39.9	31.6	47.4
170	26.4	21.3	31.9

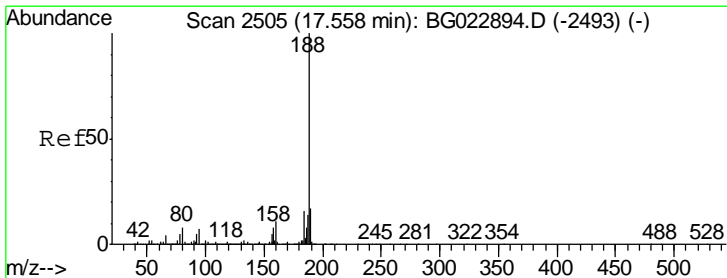
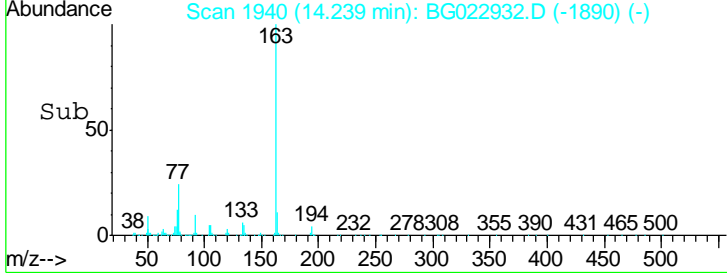
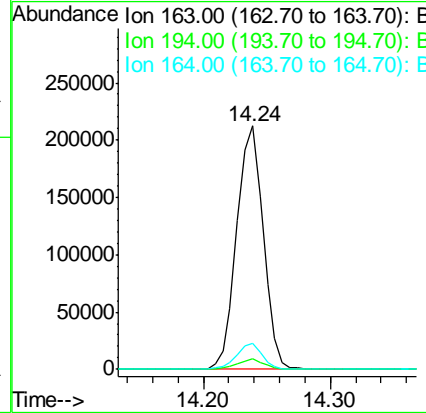
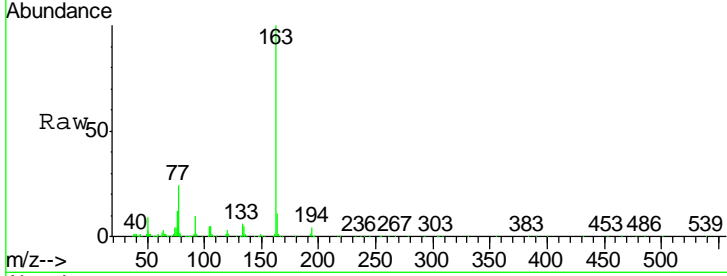




#49
 Dimethylphthalate
 Concen: 9.64 ng
 RT: 14.24 min Scan# 1940
 Delta R.T. -0.01 min
 Lab File: BG022932.D
 Acq: 8 Jul 2016 15:24

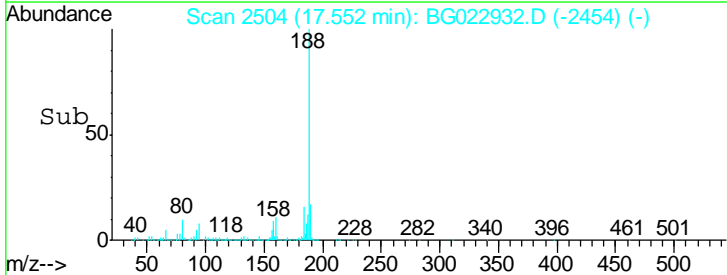
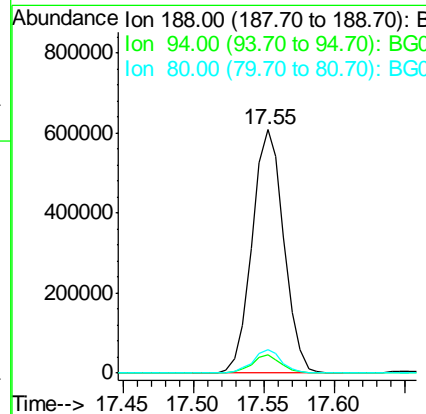
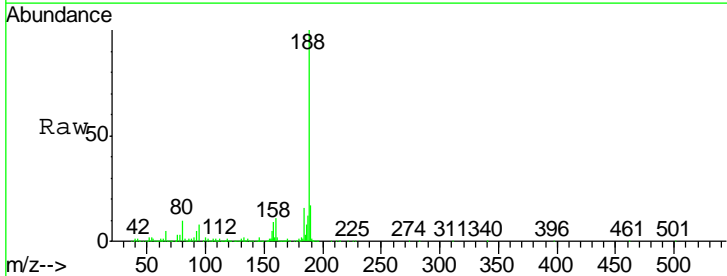
Instrument :
 BNA_G
 ClientSampled :

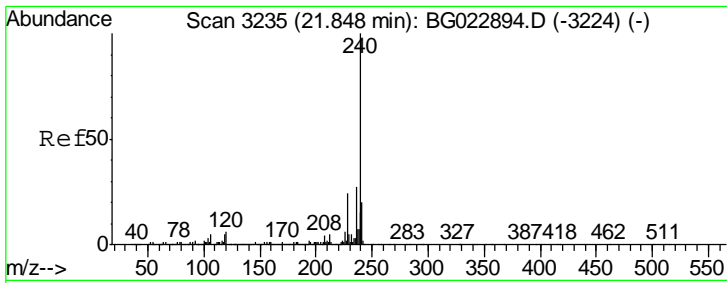
Tgt Ion	Resp	Lower	Upper
163	307781		
194	4.2	3.6	5.4
164	10.6	8.1	12.1



#63
 Phenanthrene-d10
 Concen: 20.00 ng
 RT: 17.55 min Scan# 2504
 Delta R.T. -0.01 min
 Lab File: BG022932.D
 Acq: 8 Jul 2016 15:24

Tgt Ion	Resp	Lower	Upper
188	957672		
94	7.7	5.2	7.8
80	9.8	7.2	10.8



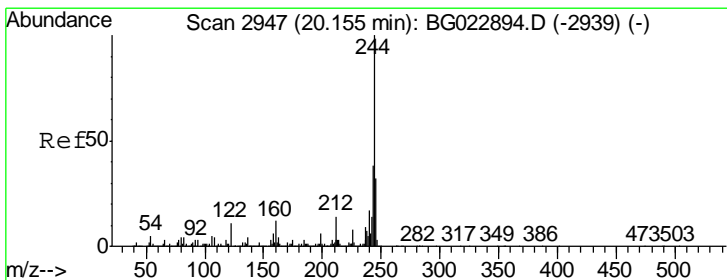
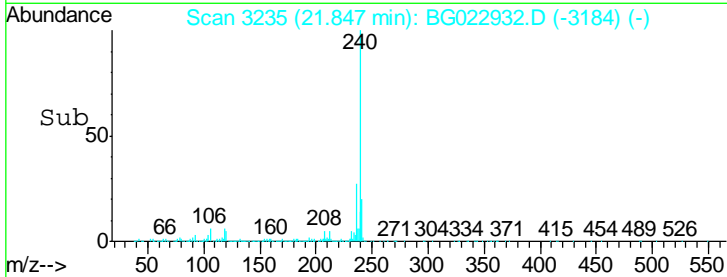
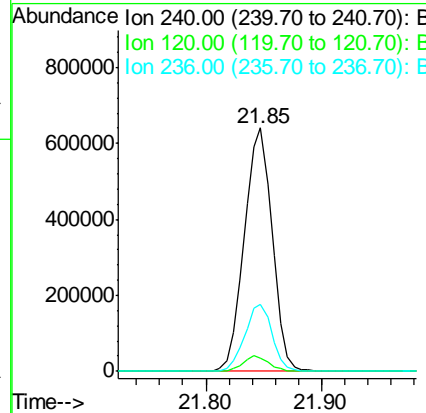
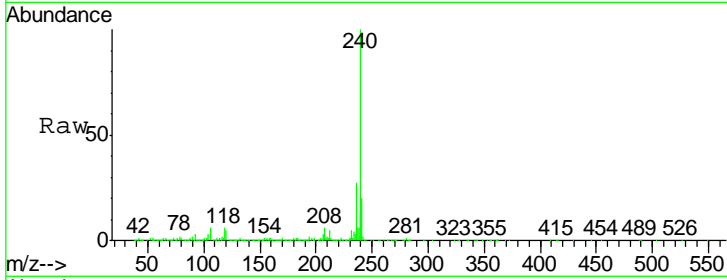


#75
 Chrysene-d12
 Concen: 20.00 ng
 RT: 21.85 min Scan# 3235
 Delta R.T. -0.00 min
 Lab File: BG022932.D
 Acq: 8 Jul 2016 15:24

Instrument :
 BNA_G
 ClientSampled :

Tgt Ion: 240 Resp: 1070942

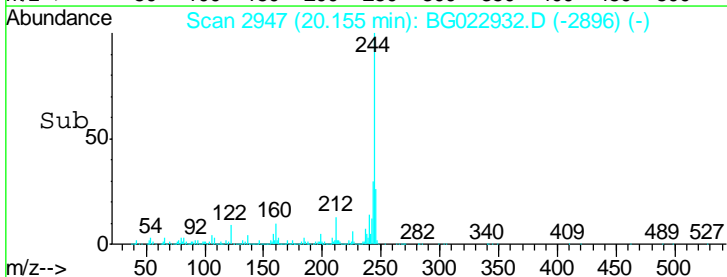
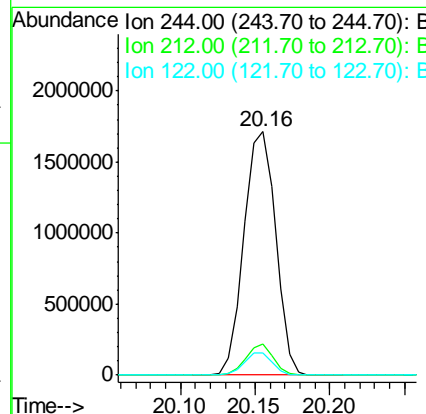
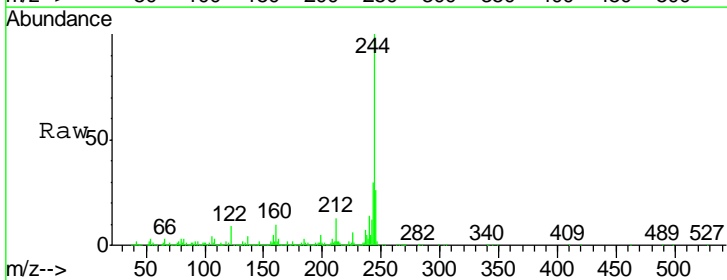
Ion	Ratio	Lower	Upper
240	100		
120	5.4	4.1	6.1
236	27.3	21.1	31.7

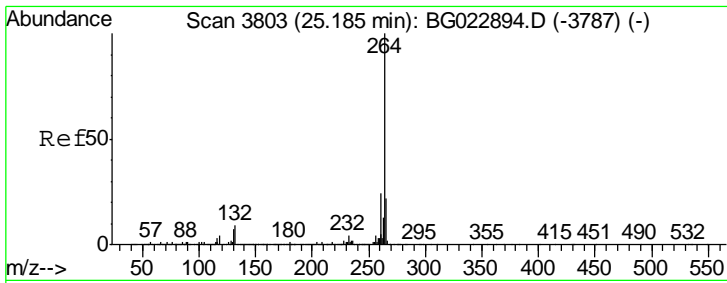


#78
 Terphenyl-d14
 Concen: 69.82 ng
 RT: 20.16 min Scan# 2947
 Delta R.T. 0.00 min
 Lab File: BG022932.D
 Acq: 8 Jul 2016 15:24

Tgt Ion: 244 Resp: 2524848

Ion	Ratio	Lower	Upper
244	100		
212	12.5	10.8	16.2
122	8.9	8.0	12.0





#86
 Perylene-d12
 Concen: 20.00 ng
 RT: 25.20 min Scan# 3806
 Delta R.T. 0.02 min
 Lab File: BG022932.D
 Acq: 8 Jul 2016 15:24

Instrument :
 BNA_G
 ClientSampled :

Tot Ion: 264 Resp: 1100077

Ion	Ratio	Lower	Upper
264	100		
260	24.9	18.4	27.6
265	22.8	18.9	28.3

