

Data Path : Z:\HPCHEM1\BNA G\DATA\BG070816\
 Data File : BG022906.D
 Acq On : 7 Jul 2016 22:02
 Operator : UM/SJ
 Sample : H3840-06
 Misc :
 ALS Vial : 8 Sample Multiplier: 1

Instrument :
 BNA_G
 ClientSampleId :
 MW-9

Integration Parameters: rteint.p
 Integrator: RTE
 Smoothing : ON Filtering: 5
 Sampling : 1 Min Area: 3 % of largest Peak
 Start Thrs: 0.2 Max Peaks: 100
 Stop Thrs : 0 Peak Location: TOP

If leading or trailing edge < 100 prefer < Baseline drop else tangent >
 Peak separation: 5

Method : Z:\HPCHEM1\BNA G\METHODS\8270-BG070816.M
 Title : ASP BNA STANDARDS FOR 5 POINT CALIBRATION

Signal : TIC

peak #	R.T. min	first scan	max scan	last scan	PK TY	peak height	corr. area	corr. % max.	% of total
1	5.697	479	486	498	rVB	1044776	1684098	16.53%	3.705%
2	7.306	752	760	772	rVB	947317	1631182	16.01%	3.588%
3	7.682	815	824	832	rBV	1810720	3125403	30.68%	6.875%
4	8.152	895	904	912	rBV	382894	659650	6.48%	1.451%
5	8.482	951	960	968	rBV	1266615	2266815	22.25%	4.986%
6	9.328	1095	1104	1113	rBV	1352098	2493294	24.48%	5.485%
7	10.979	1378	1385	1394	rVB	543995	1019284	10.01%	2.242%
8	13.417	1792	1800	1810	rVB	3841104	6005014	58.95%	13.209%
9	14.798	2029	2035	2044	rVB2	1044483	1718723	16.87%	3.781%
10	16.290	2283	2289	2297	rBV	3990315	6265517	61.51%	13.782%
11	17.559	2497	2505	2514	rBV2	1468583	2379695	23.36%	5.235%
12	17.900	2560	2563	2572	rBV	94301	164351	1.61%	0.362%
13	19.798	2882	2886	2894	rVB	164480	263390	2.59%	0.579%
14	20.156	2941	2947	2953	rBV	7771368	10186495	100.00%	22.408%
15	21.302	3139	3142	3150	rVB3	78162	135281	1.33%	0.298%
16	21.848	3228	3235	3242	rVB	1570606	2733040	26.83%	6.012%
17	25.197	3795	3805	3817	rVB2	917077	2728925	26.79%	6.003%

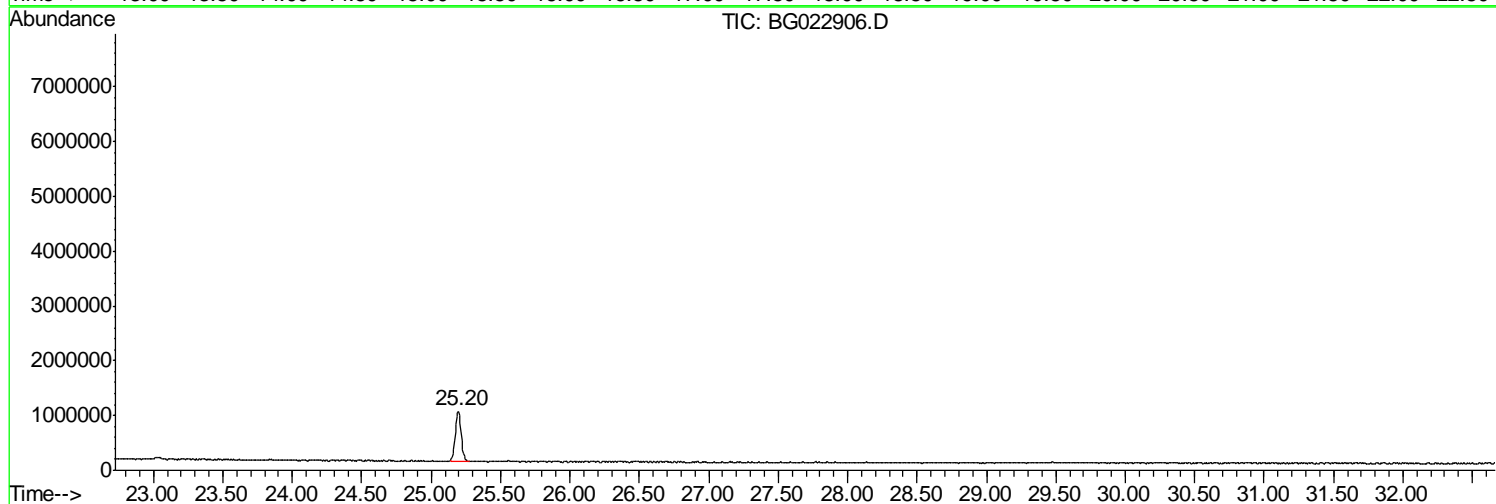
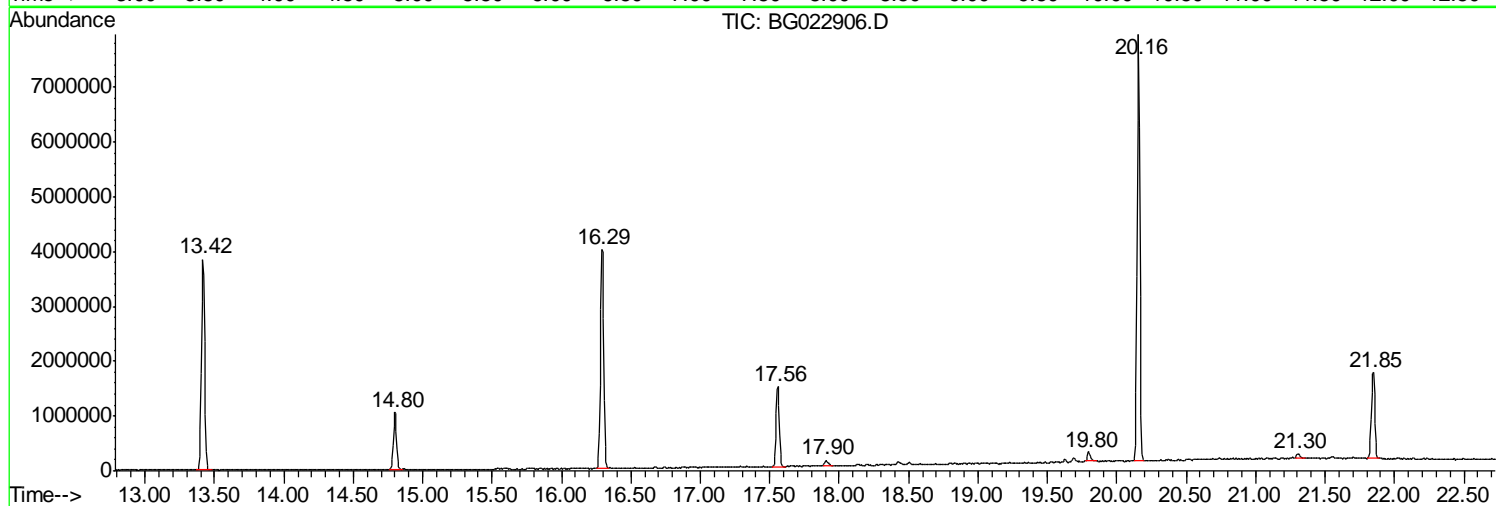
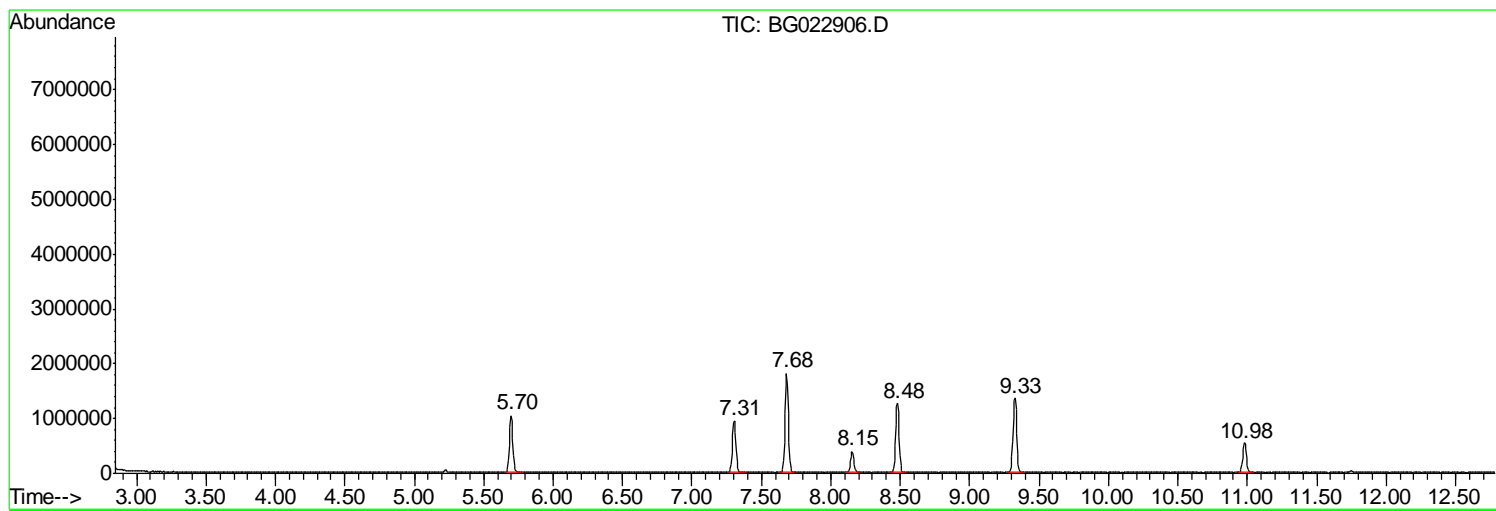
Sum of corrected areas: 45460157

Data Path : Z:\HPCHEM1\BNA G\DATA\BG070816\
Data File : BG022906.D
Acq On : 7 Jul 2016 22:02
Operator : UM/SJ
Sample : H3840-06
Misc :
ALS Vial : 8 Sample Multiplier: 1

Instrument :
BNA_G
ClientSampled :
MW-9

Quant Method : Z:\HPCHEM1\BNA G\METHODS\8270-BG070816.M
Quant Title : ASP BNA STANDARDS FOR 5 POINT CALIBRATION

TIC Library : C:\DATABASE\NIST02.L
TIC Integration Parameters: LSCINT.P



Data Path : Z:\HPCHEM1\BNA G\DATA\BG070816\
 Data File : BG022906.D
 Acq On : 7 Jul 2016 22:02
 Operator : UM/SJ
 Sample : H3840-06
 Misc :
 ALS Vial : 8 Sample Multiplier: 1

Instrument :
 BNA_G
 ClientSampleID :
 MW-9

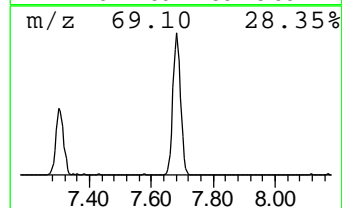
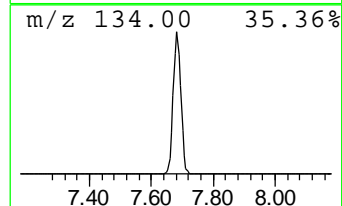
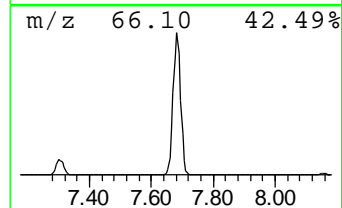
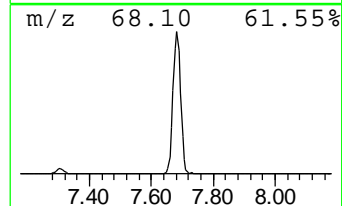
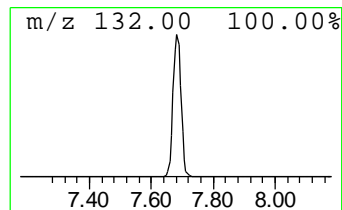
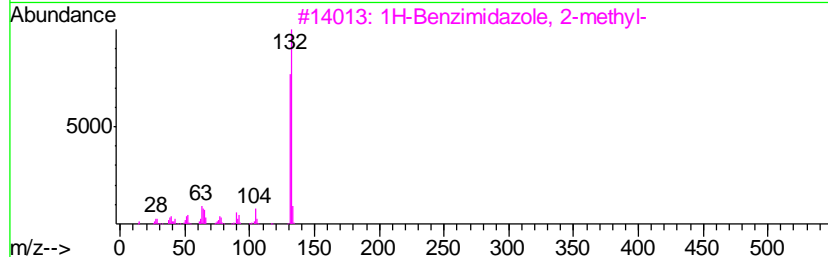
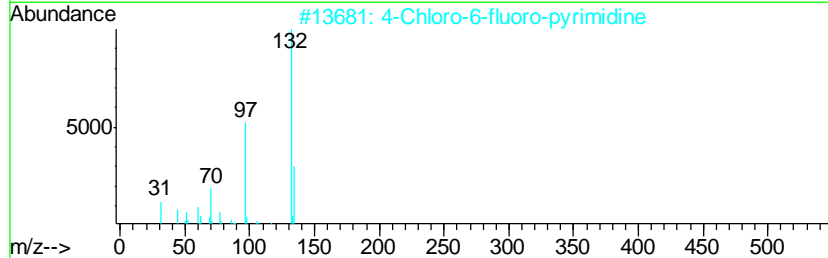
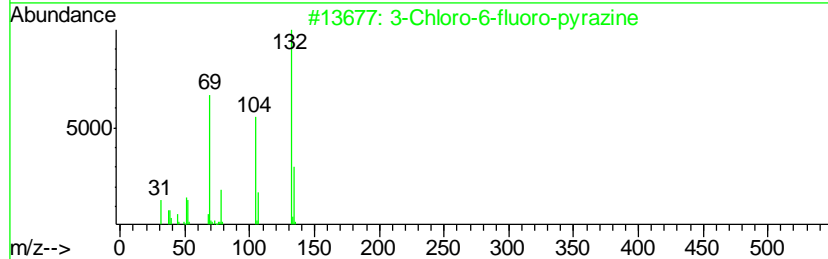
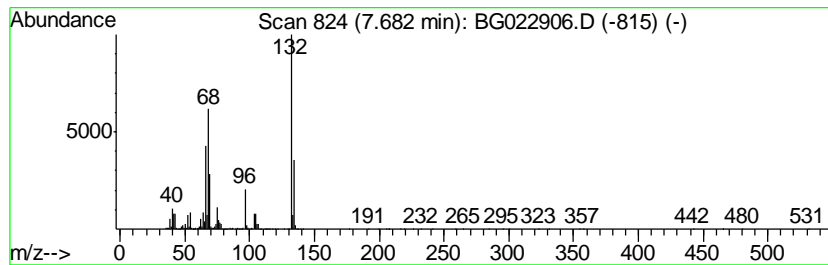
Quant Method : Z:\HPCHEM1\BNA G\METHODS\8270-BG070816.M
 Quant Title : ASP BNA STANDARDS FOR 5 POINT CALIBRATION

TIC Library : C:\DATABASE\NIST02.L
 TIC Integration Parameters: LSCINT.P

 Peak Number 1 unknown7.68 Concentration Rank 1

R.T.	EstConc	Area	Relative to ISTD	R.T.
7.68	94.76 ng	3125400	1,4-Dichlorobenzene-d4	8.15

Hit#	of	Tentative ID	MW	MolForm	CAS#	Qual
1	5	3-Chloro-6-fluoro-pyrazine	132	C4H2ClFN2	1000146-10-7	14
2		4-Chloro-6-fluoro-pyrimidine	132	C4H2ClFN2	051422-01-6	14
3		1H-Benzimidazole, 2-methyl-	132	C8H8N2	000615-15-6	10
4		(E)-3-Chloro-2-methyl-2-pentenal	132	C6H9ClO	031357-76-3	9
5		Xenon	132	Xe	007440-63-3	9



Data Path : Z:\HPCHEM1\BNA_G\DATA\BG070816\
Data File : BG022906.D
Acq On : 7 Jul 2016 22:02
Operator : UM/SJ
Sample : H3840-06
Misc :
ALS Vial : 8 Sample Multiplier: 1

Instrument :
BNA_G
ClientSampleId :
MW-9

Quant Method : Z:\HPCHEM1\BNA_G\METHODS\8270-BG070816.M
Quant Title : ASP BNA STANDARDS FOR 5 POINT CALIBRATION

TIC Library : C:\DATABASE\NIST02.L
TIC Integration Parameters: LSCINT.P

TIC Top Hit name	RT	EstConc	Units	Response	--Internal Standard--			
					#	RT	Resp	Conc
unknown7.68	7.68	94.8	ng	3125400	1	8.15	659650	20.0