

Data Path : Z:\svoasrv\HPCHEM1\BNA_G\Data\BG070821\
 Data File : BG049217.D
 Acq On : 8 Jul 2021 12:45
 Operator : CG/JU
 Sample : PB137570BS
 Misc :
 ALS Vial : 6 Sample Multiplier: 1

Instrument :
 BNA_G
 ClientSampleId :
 PB137570BS

Quant Time: Jul 08 13:28:57 2021
 Quant Method : Z:\SVOASRV\HPCHEM1\BNA_G\METHODS\8270-BG063021.M
 Quant Title : ASP BNA STANDARDS FOR 5 POINT CALIBRATION
 QLast Update : Tue Jul 06 10:59:02 2021
 Response via : Initial Calibration

Compound	R.T.	QIon	Response	Conc	Units	Dev(Min)	
Internal Standards							
1) 1,4-Dichlorobenzene-d4	8.085	152	35048	20.000	ng	0.00	
21) Naphthalene-d8	10.906	136	146594	20.000	ng	# 0.00	
39) Acenaphthene-d10	14.731	164	110836	20.000	ng	0.00	
64) Phenanthrene-d10	17.480	188	251679	20.000	ng	# 0.00	
76) Chrysene-d12	21.769	240	249111	20.000	ng	0.00	
86) Perylene-d12	25.077	264	244226	20.000	ng	0.01	
System Monitoring Compounds							
5) 2-Fluorophenol	5.635	112	283545	126.715	ng	0.00	
7) Phenol-d6	7.239	99	385913	120.966	ng	0.00	
23) Nitrobenzene-d5	9.255	82	272081	78.690	ng	0.00	
42) 2,4,6-Tribromophenol	16.223	330	225925	117.584	ng	0.00	
45) 2-Fluorobiphenyl	13.356	172	626207	76.225	ng	0.00	
79) Terphenyl-d14	20.089	244	1084110	73.744	ng	0.00	
Target Compounds							
2) 1,4-Dioxane	3.503	88	28315	28.822	ng	# 76	Qvalue
3) Pyridine	3.908	79	75214	28.316	ng	99	
4) n-Nitrosodimethylamine	3.826	42	61380	40.685	ng	# 76	
6) Aniline	7.404	93	123725	31.855	ng	97	
8) 2-Chlorophenol	7.645	128	110556	45.031	ng	92	
9) Benzaldehyde	7.216	77	8454	5.038	ng	# 53	
10) Phenol	7.269	94	145594	45.430	ng	92	
11) bis(2-Chloroethyl)ether	7.498	93	97414	41.673	ng	83	
12) 1,3-Dichlorobenzene	7.974	146	108488	39.509	ng	96	
13) 1,4-Dichlorobenzene	8.121	146	111484	40.375	ng	96	
14) 1,2-Dichlorobenzene	8.444	146	110679	41.634	ng	95	
15) Benzyl Alcohol	8.321	79	122332	43.546	ng	95	
16) 2,2'-oxybis(1-Chloropr...	8.614	45	161244	40.633	ng	86	
17) 2-Methylphenol	8.526	107	98556	45.637	ng	96	
18) Hexachloroethane	9.178	117	46375	42.058	ng	97	
19) n-Nitroso-di-n-propyla...	8.896	70	92877	40.509	ng	# 97	
20) 3+4-Methylphenols	8.855	107	136333	45.538	ng	96	
22) Acetophenone	8.914	105	185699	42.467	ng	# 98	
24) Nitrobenzene	9.296	77	142601	38.063	ng	91	
25) Isophorone	9.825	82	245304	36.934	ng	97	
26) 2-Nitrophenol	10.013	139	62935	42.196	ng	97	
27) 2,4-Dimethylphenol	10.066	122	109787	49.061	ng	97	
28) bis(2-Chloroethoxy)met...	10.301	93	138684	44.282	ng	# 94	
29) 2,4-Dichlorophenol	10.553	162	115894	43.186	ng	91	
30) 1,2,4-Trichlorobenzene	10.771	180	124931	39.530	ng	97	
31) Naphthalene	10.959	128	335753	39.338	ng	98	
32) Benzoic acid	10.230	122	78325	43.947	ng	# 73	
33) 4-Chloroaniline	11.064	127	71472	20.251	ng	92	
34) Hexachlorobutadiene	11.241	225	93665	40.114	ng	92	
35) Caprolactam	11.846	113	20047	23.536	ng	# 52	
36) 4-Chloro-3-methylphenol	12.187	107	133357	43.187	ng	95	
37) 2-Methylnaphthalene	12.563	142	261898	40.747	ng	96	
38) 1-Methylnaphthalene	12.780	142	241058	39.602	ng	96	
40) 1,2,4,5-Tetrachloroben...	12.927	216	154379	39.925	ng	97	
41) Hexachlorocyclopentadiene	12.909	237	213898	93.388	ng	96	
43) 2,4,6-Trichlorophenol	13.168	196	108636	40.686	ng	95	

Data Path : Z:\svoasrv\HPCHEM1\BNA_G\Data\BG070821\
 Data File : BG049217.D
 Acq On : 8 Jul 2021 12:45
 Operator : CG/JU
 Sample : PB137570BS
 Misc :
 ALS Vial : 6 Sample Multiplier: 1

Instrument :
 BNA_G
 ClientSampleId :
 PB137570BS

Quant Time: Jul 08 13:28:57 2021
 Quant Method : Z:\SVOASRV\HPCHEM1\BNA_G\METHODS\8270-BG063021.M
 Quant Title : ASP BNA STANDARDS FOR 5 POINT CALIBRATION
 QLast Update : Tue Jul 06 10:59:02 2021
 Response via : Initial Calibration

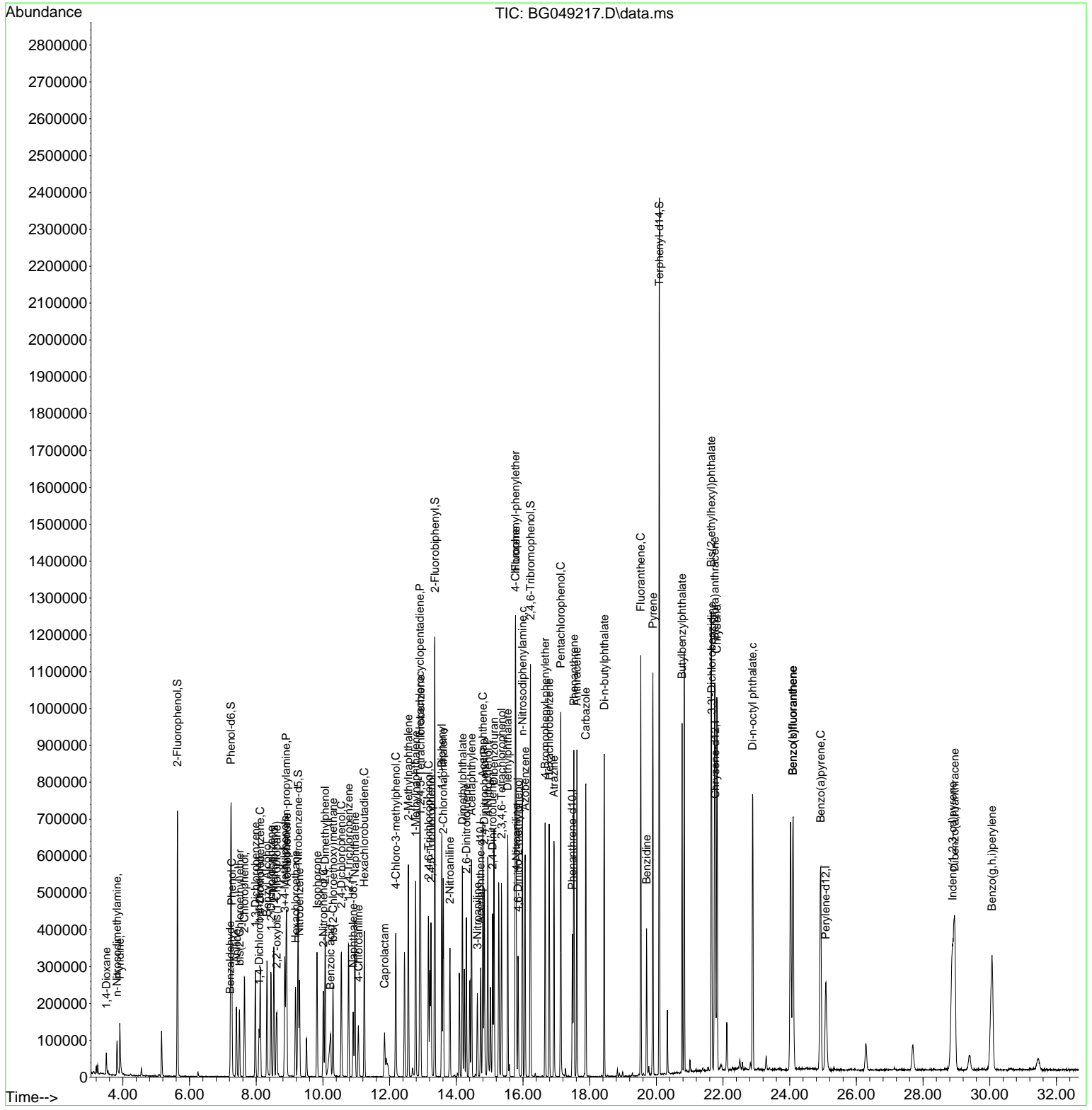
Compound	R.T.	QIon	Response	Conc	Units	Dev(Min)
44) 2,4,5-Trichlorophenol	13.244	196	116403	39.865	ng	91
46) 1,1'-Biphenyl	13.567	154	345597	41.739	ng	98
47) 2-Chloronaphthalene	13.608	162	257451	37.787	ng	99
48) 2-Nitroaniline	13.808	65	101390	40.811	ng	93
49) Acenaphthylene	14.455	152	430046	40.036	ng	98
50) Dimethylphthalate	14.184	163	364298	40.955	ng	99
51) 2,6-Dinitrotoluene	14.302	165	81356	39.897	ng	89
52) Acenaphthene	14.795	154	258643	38.634	ng	91
53) 3-Nitroaniline	14.631	138	50504	25.784	ng	100
54) 2,4-Dinitrophenol	14.842	184	106568	76.360	ng	95
55) Dibenzofuran	15.130	168	418783	38.426	ng	97
56) 4-Nitrophenol	14.948	139	130591	81.815	ng	93
57) 2,4-Dinitrotoluene	15.089	165	114484	39.524	ng	97
58) Fluorene	15.776	166	356862	39.591	ng	99
59) 2,3,4,6-Tetrachlorophenol	15.353	232	110325	40.589	ng	97
60) Diethylphthalate	15.541	149	380272	40.345	ng	98
61) 4-Chlorophenyl-phenyle...	15.771	204	199390	39.965	ng	98
62) 4-Nitroaniline	15.800	138	77029	37.857	ng	86
63) Azobenzene	16.064	77	357199	37.591	ng	90
65) 4,6-Dinitro-2-methylph...	15.853	198	71011	39.499	ng	94
66) n-Nitrosodiphenylamine	15.982	169	306223	38.904	ng	96
67) 4-Bromophenyl-phenylether	16.664	248	137614	40.530	ng	94
68) Hexachlorobenzene	16.787	284	150923	40.207	ng	97
69) Atrazine	16.928	200	134364	51.401	ng	96
70) Pentachlorophenol	17.134	266	193846	88.719	ng	98
71) Phenanthrene	17.527	178	561363	38.734	ng	98
72) Anthracene	17.616	178	573553	39.699	ng	98
73) Carbazole	17.886	167	528032	38.334	ng	97
74) Di-n-butylphthalate	18.438	149	635854	40.149	ng	98
75) Fluoranthene	19.531	202	717753	39.560	ng	96
77) Benzidine	19.707	184	228683	42.738	ng	97
78) Pyrene	19.895	202	708593	38.297	ng	97
80) Butylbenzylphthalate	20.771	149	288253	41.121	ng	93
81) Benzo(a)anthracene	21.752	228	714957	38.479	ng	98
82) 3,3'-Dichlorobenzidine	21.658	252	198488	31.402	ng	99
83) Chrysene	21.816	228	678855	38.458	ng	96
84) Bis(2-ethylhexyl)phtha...	21.646	149	405898	40.996	ng	96
85) Di-n-octyl phthalate	22.886	149	678700	40.729	ng	98
87) Indeno(1,2,3-cd)pyrene	28.879	276	847343	43.481	ng	98
88) Benzo(b)fluoranthene	24.096	252	710805	40.331	ng	96
89) Benzo(k)fluoranthene	24.096	252	710805	42.276	ng	100
90) Benzo(a)pyrene	24.930	252	703245	43.256	ng	# 97
91) Dibenzo(a,h)anthracene	28.943	278	716177	43.540	ng	# 98
92) Benzo(g,h,i)perylene	30.066	276	706584	43.578	ng	99

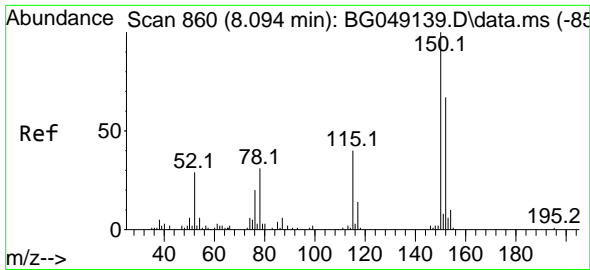
(#) = qualifier out of range (m) = manual integration (+) = signals summed

Data Path : Z:\svoasrv\HPCHEM1\BNA_G\Data\BG070821\
 Data File : BG049217.D
 Acq On : 8 Jul 2021 12:45
 Operator : CG/JU
 Sample : PB137570BS
 Misc :
 ALS Vial : 6 Sample Multiplier: 1

Instrument :
 BNA_G
 Client Sampled :
 PB137570BS

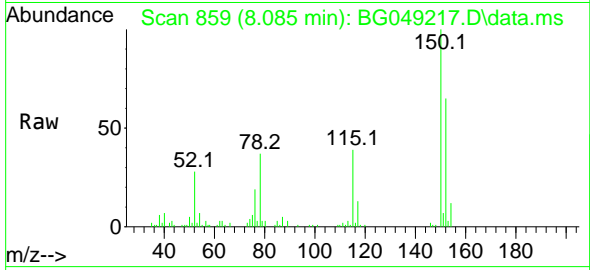
Quant Time: Jul 08 13:28:57 2021
 Quant Method : Z:\SVOASRV\HPCHEM1\BNA_G\METHODS\8270-BG063021.M
 Quant Title : ASP BNA STANDARDS FOR 5 POINT CALIBRATION
 QLast Update : Tue Jul 06 10:59:02 2021
 Response via : Initial Calibration



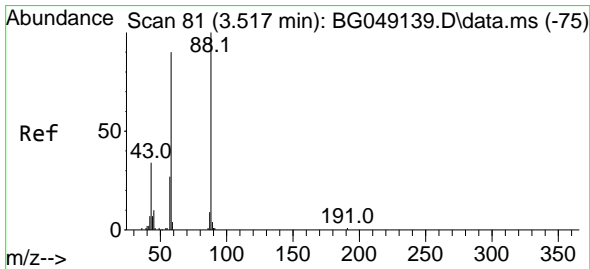
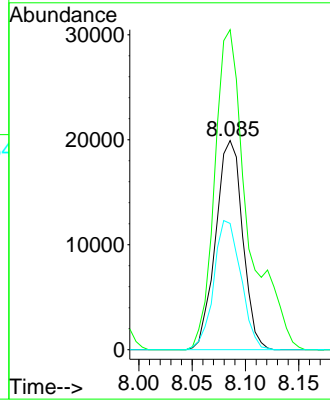
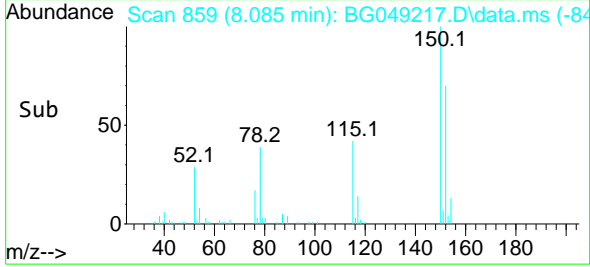


#1
 1,4-Dichlorobenzene-d4
 Concen: 20.000 ng
 RT: 8.085 min Scan# 859
 Delta R.T. -0.005 min
 Lab File: BG049217.D
 Acq: 8 Jul 2021 12:45

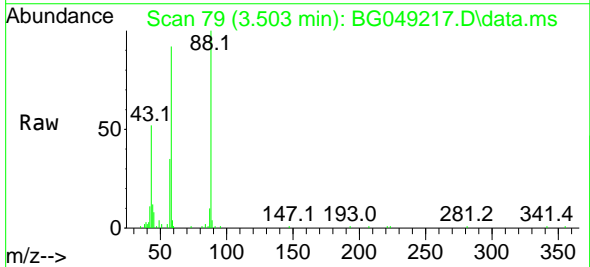
Instrument :
 BNA_G
 ClientSampled :
 PB137570BS



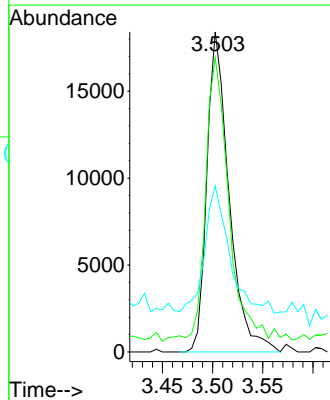
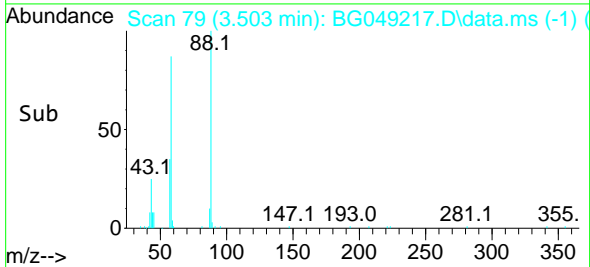
Tgt Ion:152 Resp: 35048
 Ion Ratio Lower Upper
 152 100
 150 153.0 119.4 179.0
 115 60.4 60.2 90.4

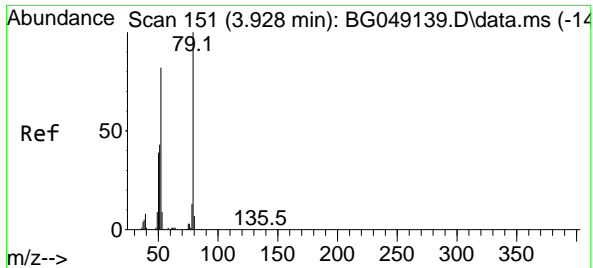


#2
 1,4-Dioxane
 Concen: 28.822 ng
 RT: 3.503 min Scan# 79
 Delta R.T. -0.011 min
 Lab File: BG049217.D
 Acq: 8 Jul 2021 12:45



Tgt Ion: 88 Resp: 28315
 Ion Ratio Lower Upper
 88 100
 58 93.5 55.7 83.5#
 43 45.4 29.3 43.9#

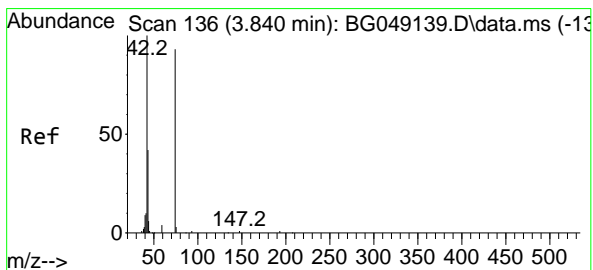
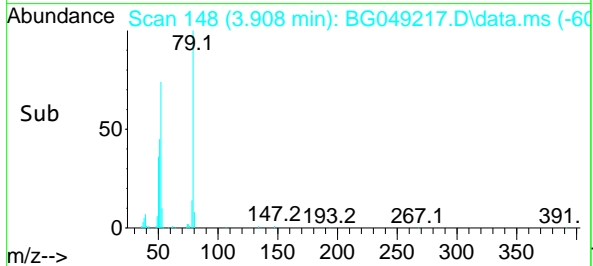
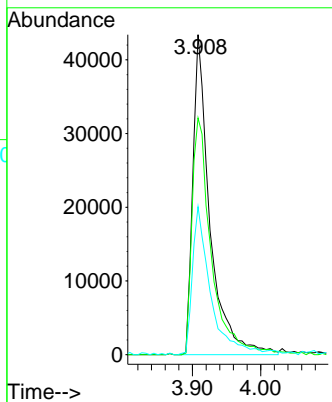
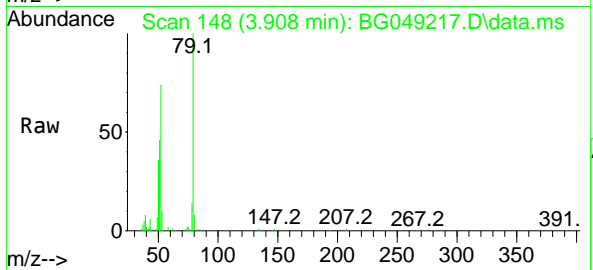




#3
 Pyridine
 Concen: 28.316 ng
 RT: 3.908 min Scan# 148
 Delta R.T. -0.011 min
 Lab File: BG049217.D
 Acq: 8 Jul 2021 12:45

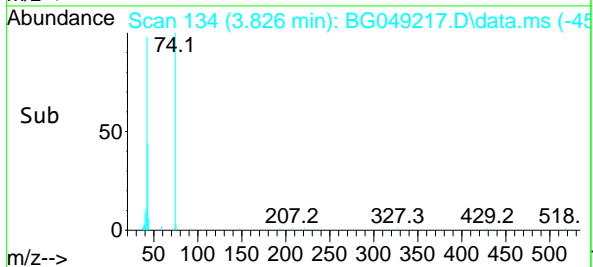
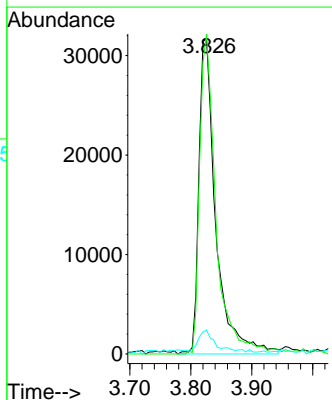
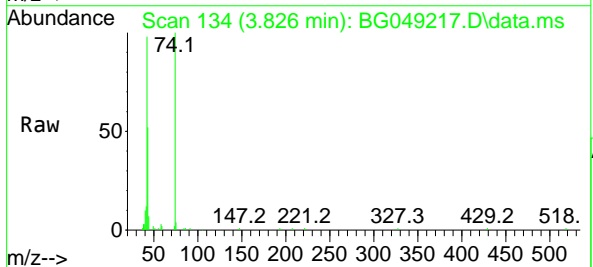
Instrument :
 BNA_G
 ClientSampled :
 PB137570BS

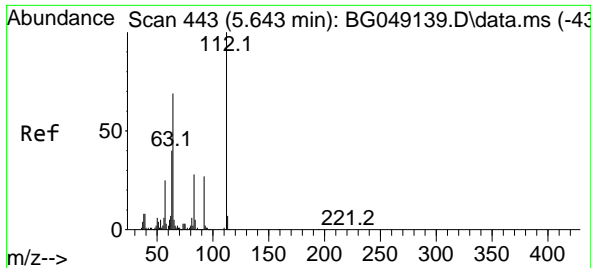
Tgt Ion	Resp	Lower	Upper
79	100		
52	74.0	58.4	87.6
51	46.2	37.0	55.6



#4
 n-Nitrosodimethylamine
 Concen: 40.685 ng
 RT: 3.826 min Scan# 134
 Delta R.T. -0.005 min
 Lab File: BG049217.D
 Acq: 8 Jul 2021 12:45

Tgt Ion	Resp	Lower	Upper
42	100		
74	101.6	64.0	96.0#
44	7.6	2.7	4.1#

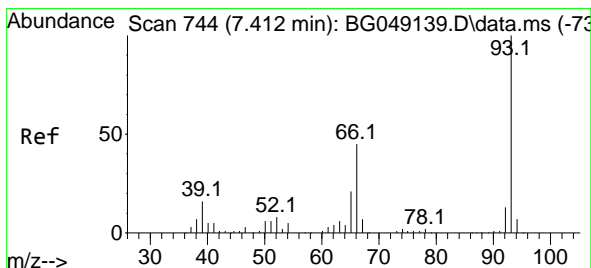
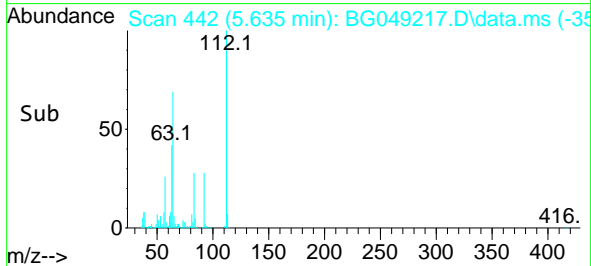
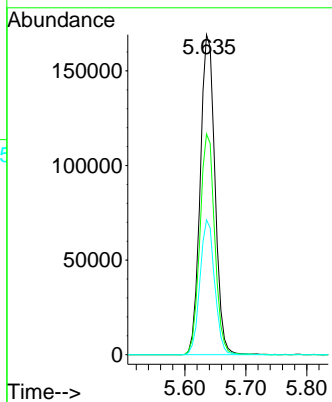
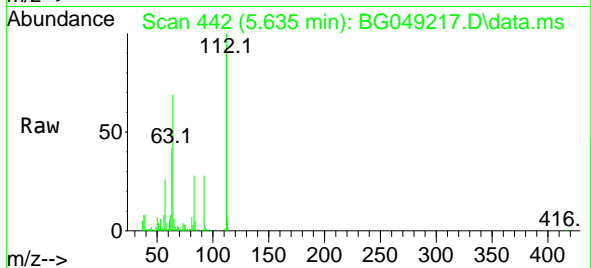




#5
 2-Fluorophenol
 Concen: 126.715 ng
 RT: 5.635 min Scan# 442
 Delta R.T. 0.001 min
 Lab File: BG049217.D
 Acq: 8 Jul 2021 12:45

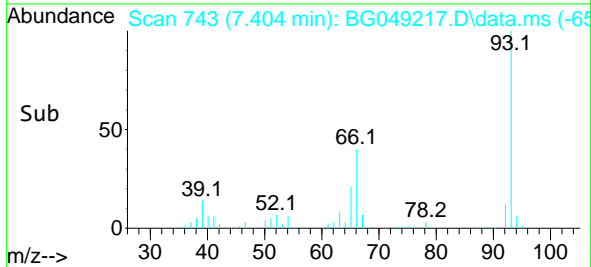
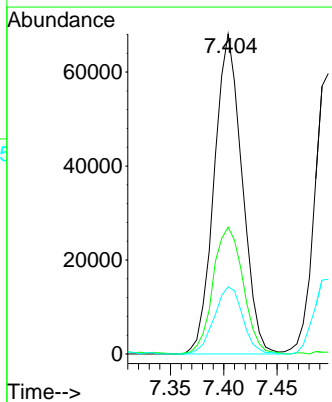
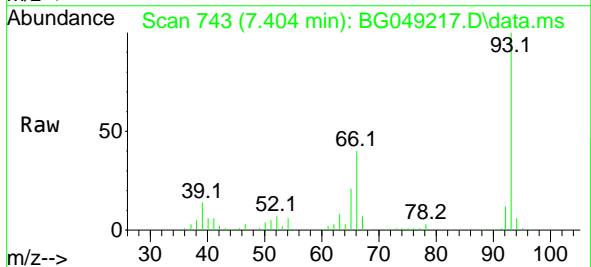
Instrument :
 BNA_G
 ClientSampled :
 PB137570BS

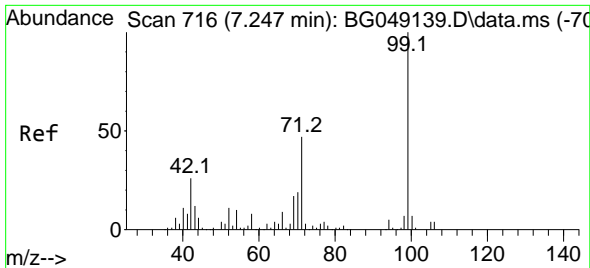
Tgt Ion	Resp	Lower	Upper
112	100		
64	68.9	46.7	70.1
63	42.1	35.3	52.9



#6
 Aniline
 Concen: 31.855 ng
 RT: 7.404 min Scan# 743
 Delta R.T. 0.001 min
 Lab File: BG049217.D
 Acq: 8 Jul 2021 12:45

Tgt Ion	Resp	Lower	Upper
93	100		
66	39.6	30.6	45.8
65	21.0	15.0	22.4

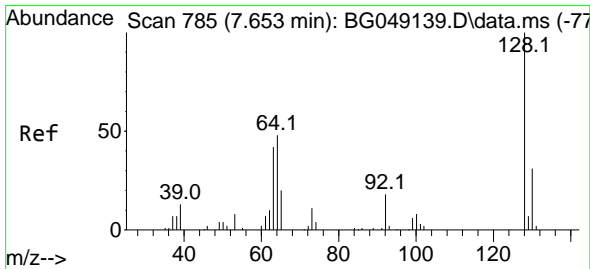
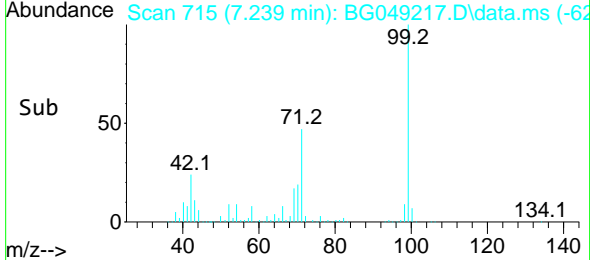
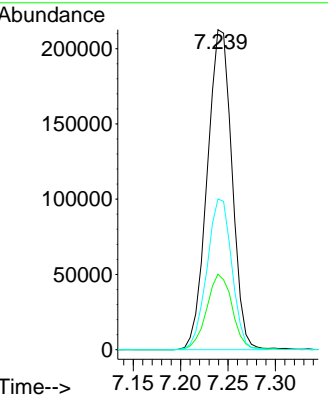
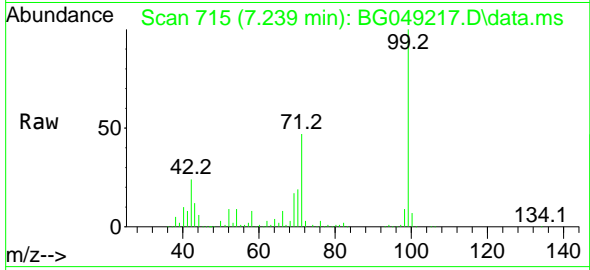




#7
 Phenol-d6
 Concen: 120.966 ng
 RT: 7.239 min Scan# 715
 Delta R.T. 0.001 min
 Lab File: BG049217.D
 Acq: 8 Jul 2021 12:45

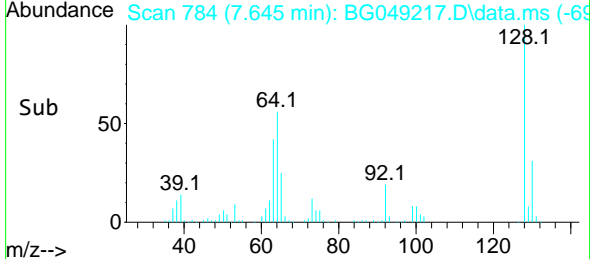
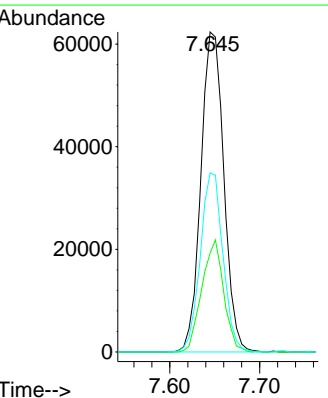
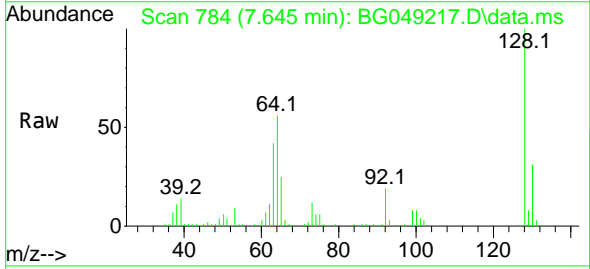
Instrument :
 BNA_G
 ClientSampled :
 PB137570BS

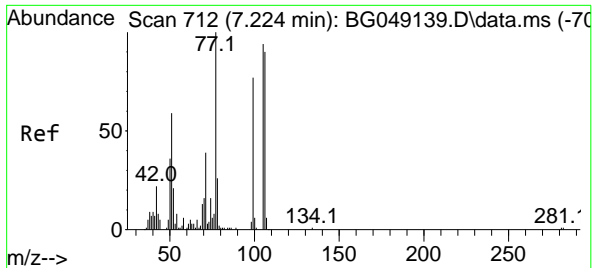
Tgt Ion	Resp	Lower	Upper
99	385913		
Ion Ratio	100		
42	23.6	20.5	30.7
71	47.1	41.5	62.3



#8
 2-Chlorophenol
 Concen: 45.031 ng
 RT: 7.645 min Scan# 784
 Delta R.T. -0.005 min
 Lab File: BG049217.D
 Acq: 8 Jul 2021 12:45

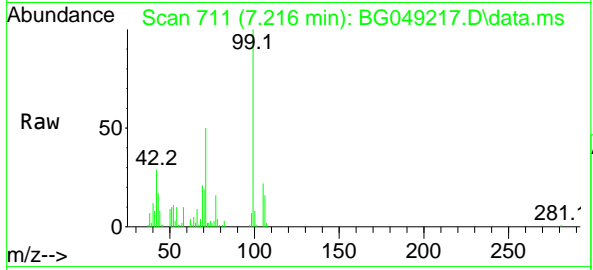
Tgt Ion	Resp	Lower	Upper
128	110556		
Ion Ratio	100		
130	30.9	10.0	50.0
64	55.9	28.1	68.1





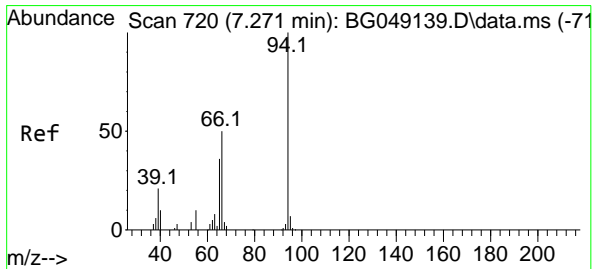
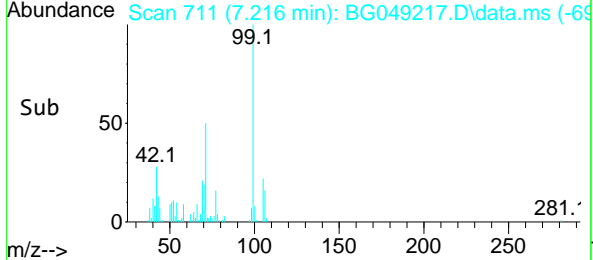
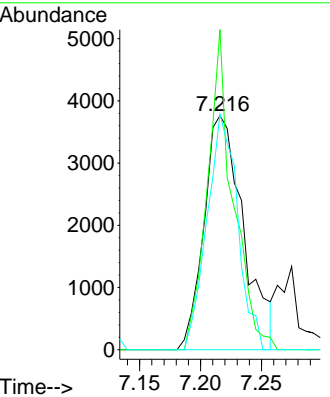
#9
 Benzaldehyde
 Concen: 5.038 ng
 RT: 7.216 min Scan# 711
 Delta R.T. 0.001 min
 Lab File: BG049217.D
 Acq: 8 Jul 2021 12:45

Instrument :
 BNA_G
 ClientSampled :
 PB137570BS



Tgt Ion: 77 Resp: 8454

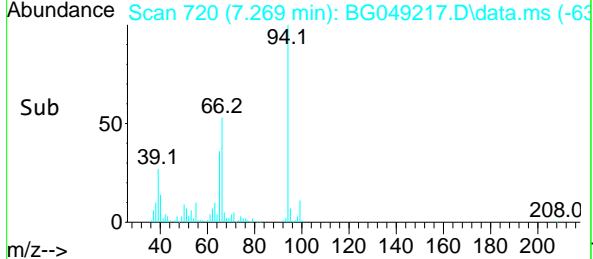
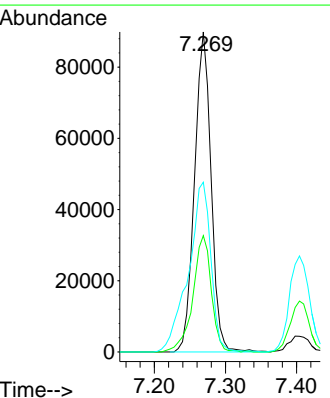
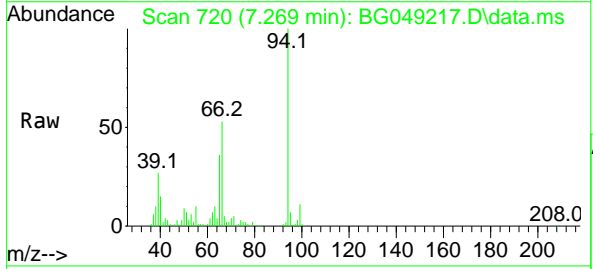
Ion	Ratio	Lower	Upper
77	100		
105	136.7	68.8	108.8#
106	100.6	47.9	87.9#

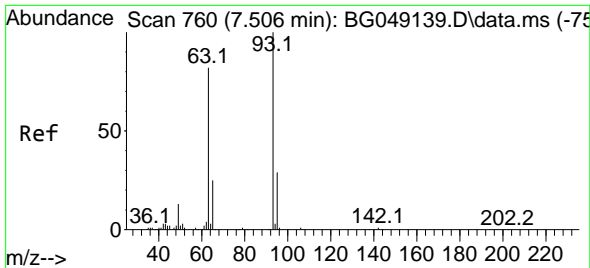


#10
 Phenol
 Concen: 45.430 ng
 RT: 7.269 min Scan# 720
 Delta R.T. 0.001 min
 Lab File: BG049217.D
 Acq: 8 Jul 2021 12:45

Tgt Ion: 94 Resp: 145594

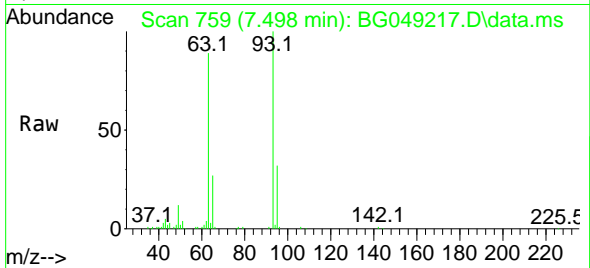
Ion	Ratio	Lower	Upper
94	100		
65	36.4	12.9	52.9
66	53.0	39.4	79.4





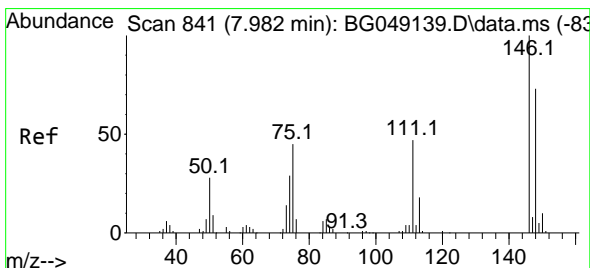
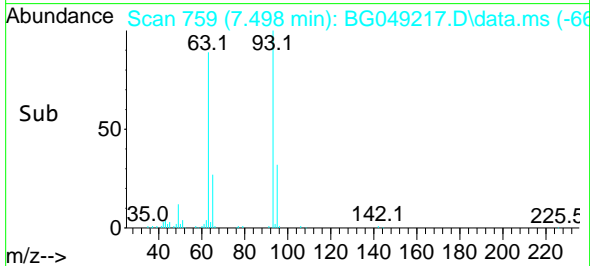
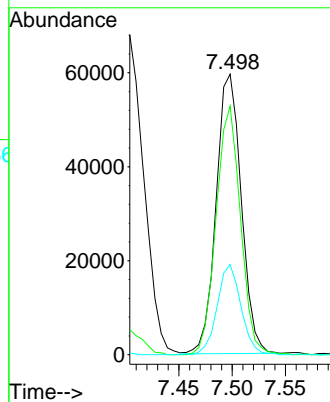
#11
 bis(2-Chloroethyl)ether
 Concen: 41.673 ng
 RT: 7.498 min Scan# 759
 Delta R.T. 0.001 min
 Lab File: BG049217.D
 Acq: 8 Jul 2021 12:45

Instrument :
 BNA_G
 ClientSampled :
 PB137570BS

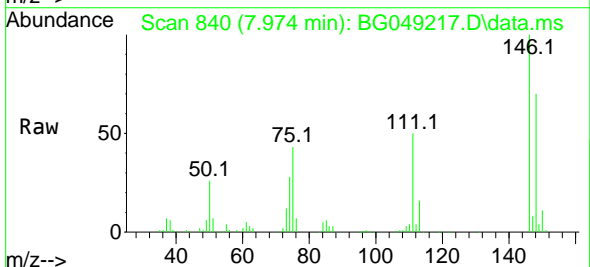


Tgt Ion: 93 Resp: 97414

Ion	Ratio	Lower	Upper
93	100		
63	88.6	50.4	90.4
95	32.2	15.3	55.3

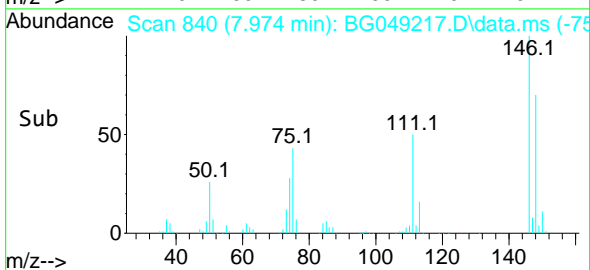
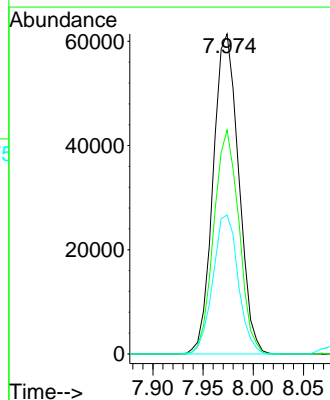


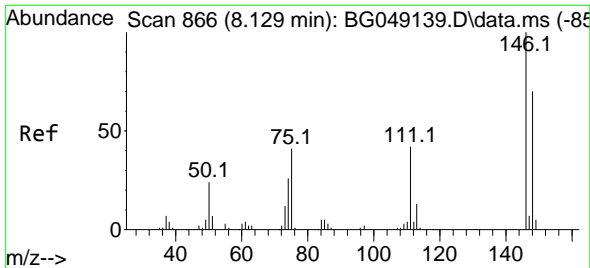
#12
 1,3-Dichlorobenzene
 Concen: 39.509 ng
 RT: 7.974 min Scan# 840
 Delta R.T. 0.001 min
 Lab File: BG049217.D
 Acq: 8 Jul 2021 12:45



Tgt Ion: 146 Resp: 108488

Ion	Ratio	Lower	Upper
146	100		
148	70.0	52.6	78.8
75	43.4	35.7	53.5



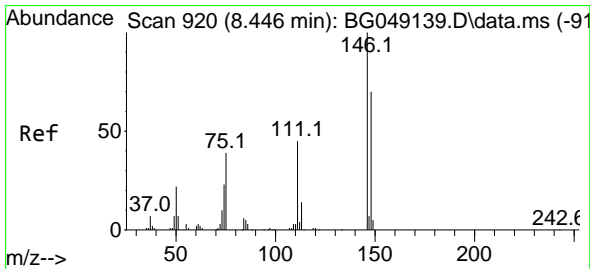
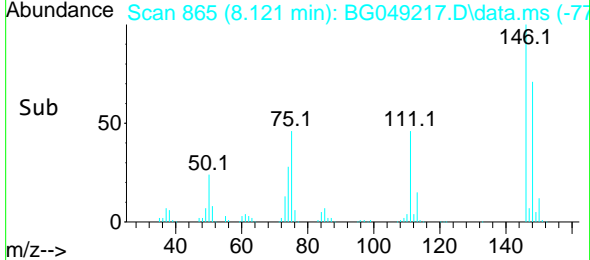
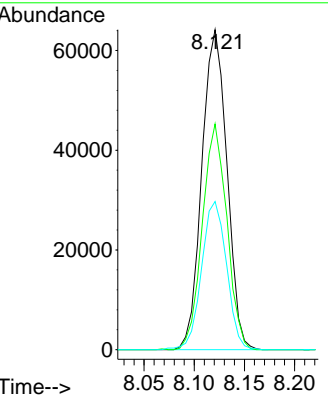
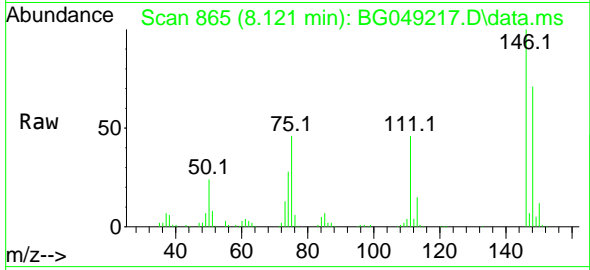


#13
 1,4-Dichlorobenzene
 Concen: 40.375 ng
 RT: 8.121 min Scan# 865
 Delta R.T. 0.001 min
 Lab File: BG049217.D
 Acq: 8 Jul 2021 12:45

Instrument :
 BNA_G
 ClientSampled :
 PB137570BS

Tgt Ion:146 Resp: 111484

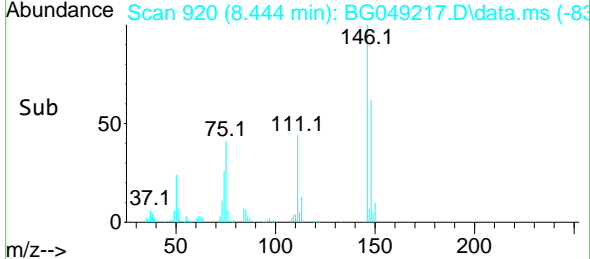
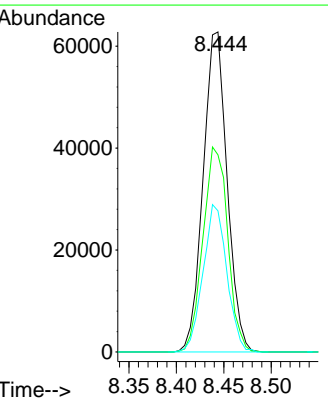
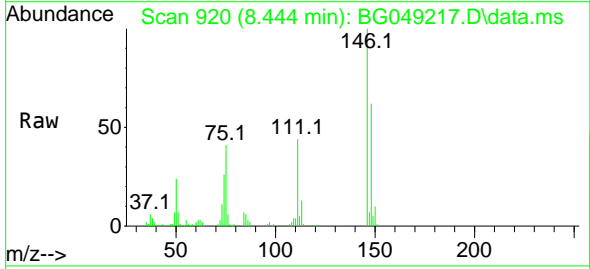
Ion	Ratio	Lower	Upper
146	100		
148	70.5	54.0	81.0
111	46.3	34.3	51.5

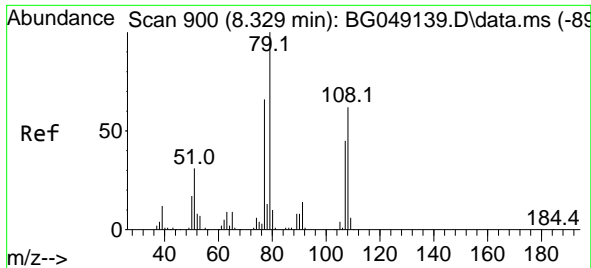


#14
 1,2-Dichlorobenzene
 Concen: 41.634 ng
 RT: 8.444 min Scan# 920
 Delta R.T. 0.001 min
 Lab File: BG049217.D
 Acq: 8 Jul 2021 12:45

Tgt Ion:146 Resp: 110679

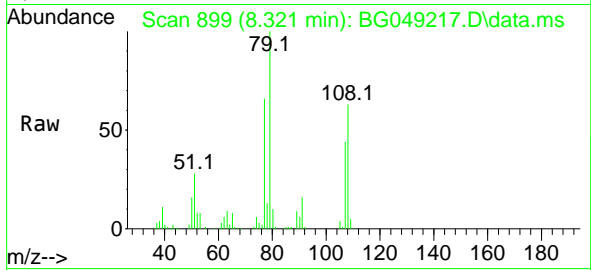
Ion	Ratio	Lower	Upper
146	100		
148	61.6	47.5	71.3
111	44.1	39.1	58.7



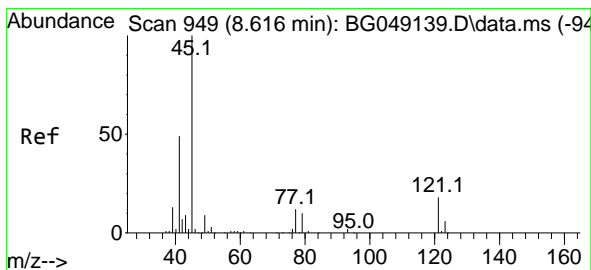
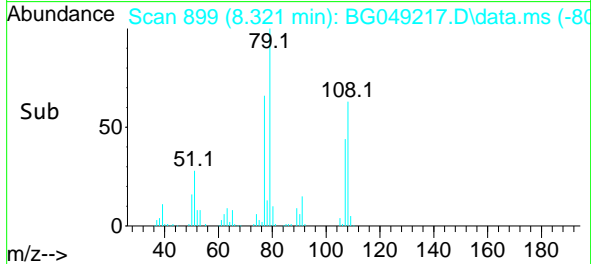
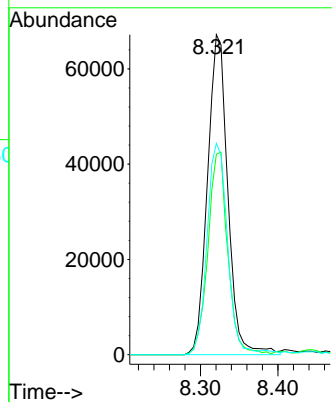


#15
Benzyl Alcohol
Concen: 43.546 ng
RT: 8.321 min Scan# 899
Delta R.T. 0.001 min
Lab File: BG049217.D
Acq: 8 Jul 2021 12:45

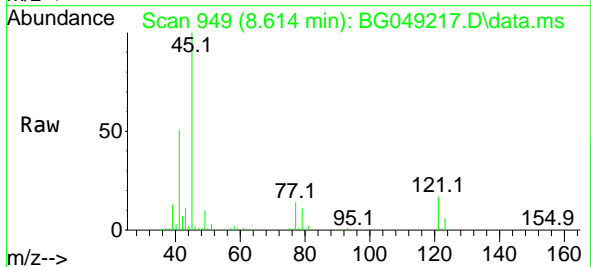
Instrument :
BNA_G
ClientSampled :
PB137570BS



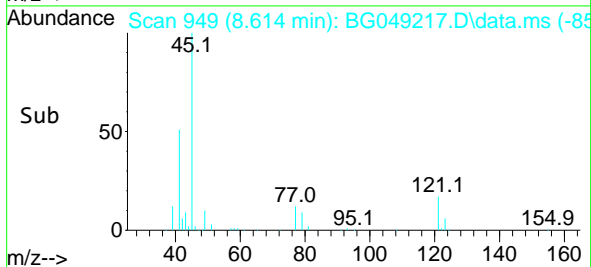
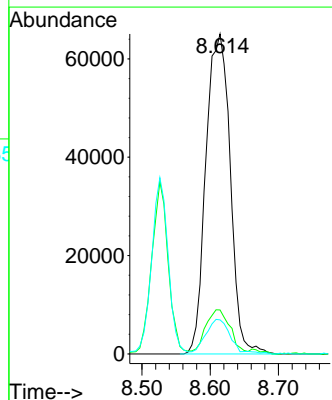
Tgt Ion: 79 Resp: 122332
Ion Ratio Lower Upper
79 100
108 62.6 48.2 72.4
77 66.1 57.3 85.9

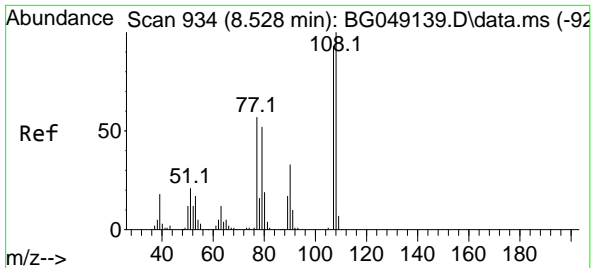


#16
2,2'-oxybis(1-Chloropropane)
Concen: 40.633 ng
RT: 8.614 min Scan# 949
Delta R.T. 0.001 min
Lab File: BG049217.D
Acq: 8 Jul 2021 12:45



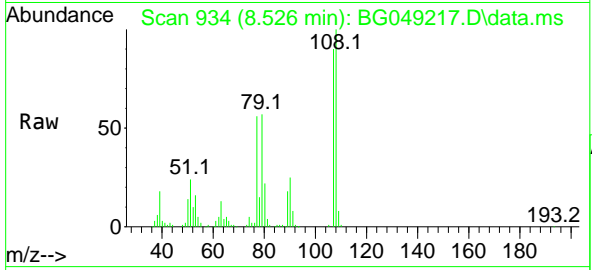
Tgt Ion: 45 Resp: 161244
Ion Ratio Lower Upper
45 100
77 13.8 2.2 42.2
79 10.7 0.0 34.3



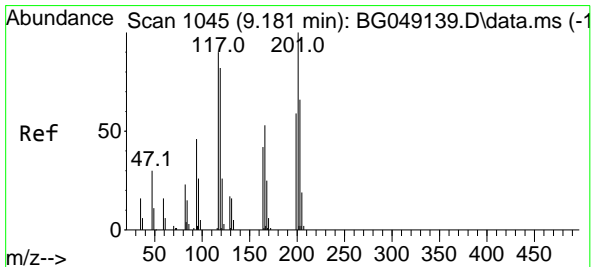
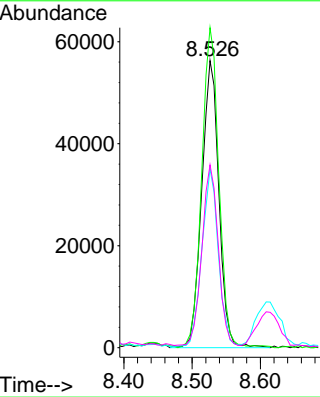
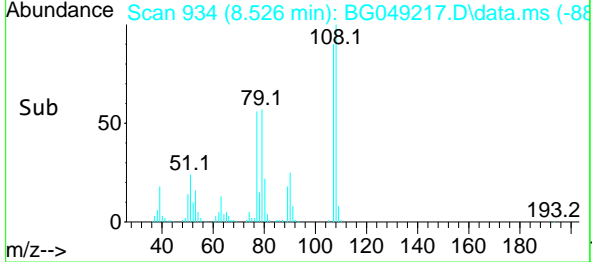


#17
 2-Methylphenol
 Concen: 45.637 ng
 RT: 8.526 min Scan# 934
 Delta R.T. 0.001 min
 Lab File: BG049217.D
 Acq: 8 Jul 2021 12:45

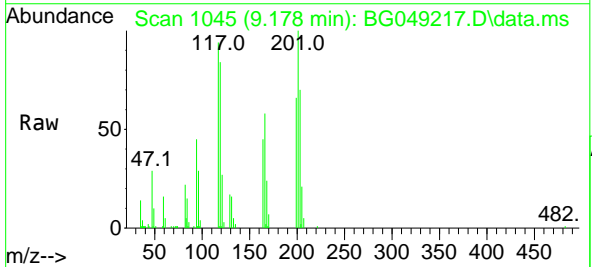
Instrument :
 BNA_G
 ClientSampled :
 PB137570BS



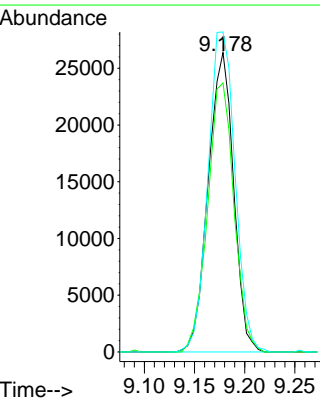
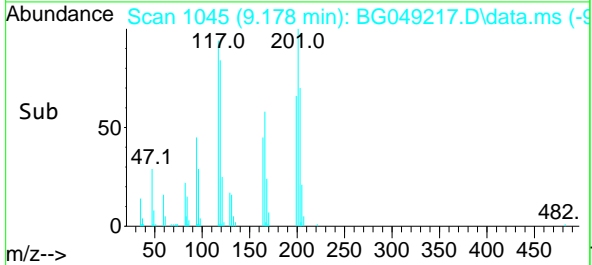
Tgt Ion	Resp	Lower	Upper
107	98556		
107	100		
108	111.5	84.6	127.0
77	62.3	50.7	76.1
79	63.7	49.4	74.0

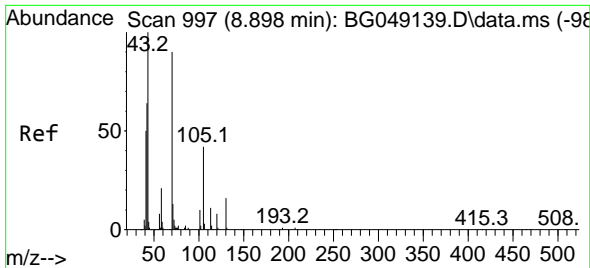


#18
 Hexachloroethane
 Concen: 42.058 ng
 RT: 9.178 min Scan# 1045
 Delta R.T. 0.001 min
 Lab File: BG049217.D
 Acq: 8 Jul 2021 12:45



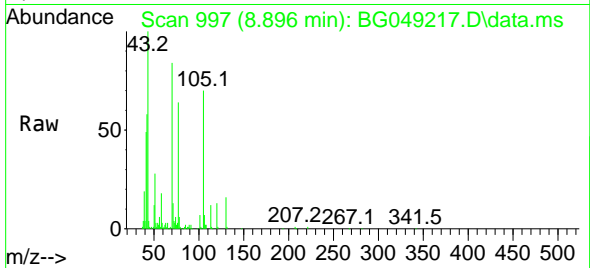
Tgt Ion	Resp	Lower	Upper
117	46375		
117	100		
119	89.9	74.4	111.6
201	106.9	88.6	133.0





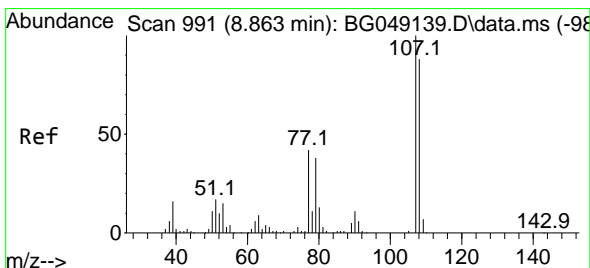
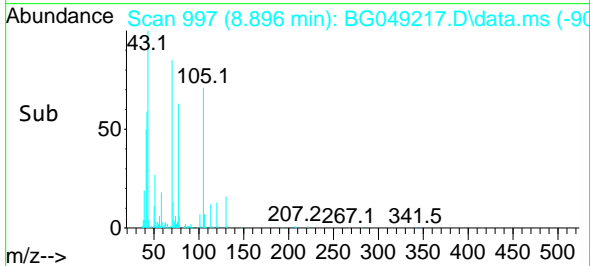
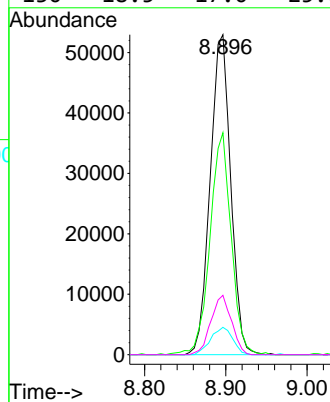
#19
 n-Nitroso-di-n-propylamine
 Concen: 40.509 ng
 RT: 8.896 min Scan# 997
 Delta R.T. 0.001 min
 Lab File: BG049217.D
 Acq: 8 Jul 2021 12:45

Instrument :
 BNA_G
 ClientSampled :
 PB137570BS

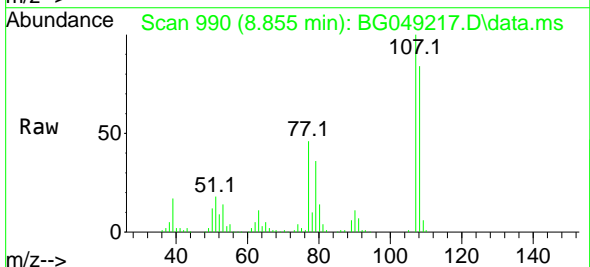


Tgt Ion: 70 Resp: 92877

Ion	Ratio	Lower	Upper
70	100		
42	69.3	54.5	81.7
101	8.6	9.0	13.6#
130	18.5	17.0	25.6

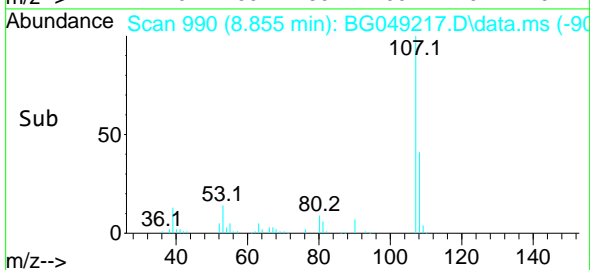
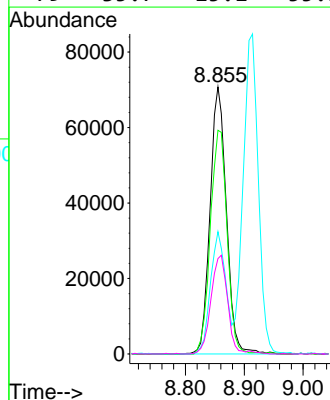


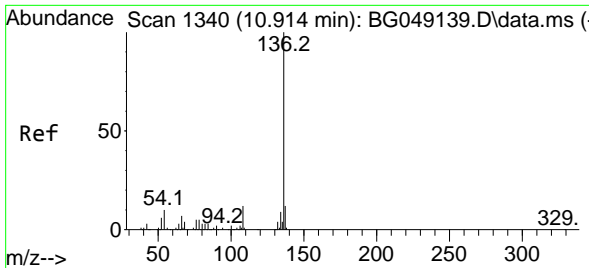
#20
 3+4-Methylphenols
 Concen: 45.538 ng
 RT: 8.855 min Scan# 990
 Delta R.T. 0.001 min
 Lab File: BG049217.D
 Acq: 8 Jul 2021 12:45



Tgt Ion: 107 Resp: 136333

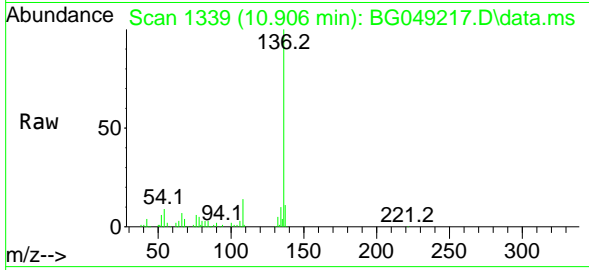
Ion	Ratio	Lower	Upper
107	100		
108	83.8	69.3	109.3
77	45.8	25.2	65.2
79	35.7	15.1	55.1





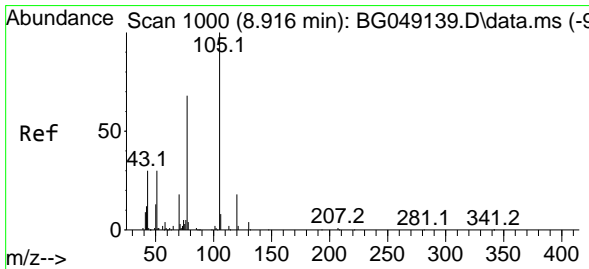
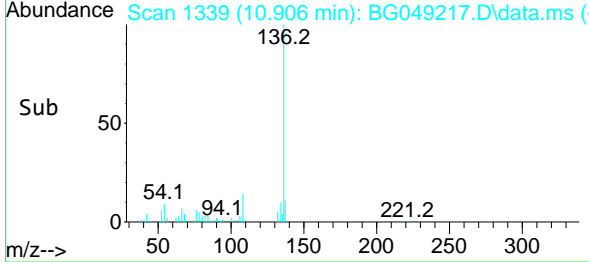
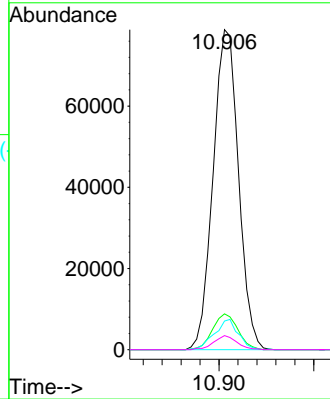
#21
 Naphthalene-d8
 Concen: 20.000 ng
 RT: 10.906 min Scan# 1339
 Delta R.T. 0.001 min
 Lab File: BG049217.D
 Acq: 8 Jul 2021 12:45

Instrument :
 BNA_G
 ClientSampled :
 PB137570BS

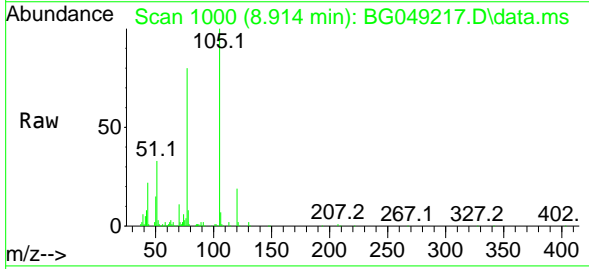


Tgt Ion:136 Resp: 146594

Ion	Ratio	Lower	Upper
136	100		
137	11.2	8.2	12.2
54	8.9	5.5	8.3#
68	4.4	2.3	3.5#

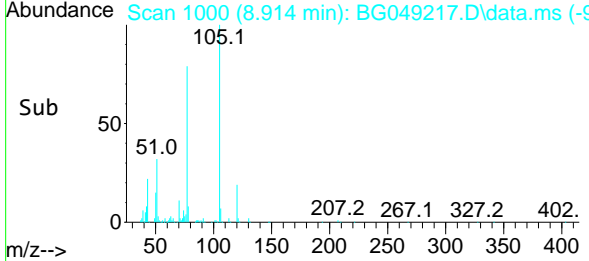
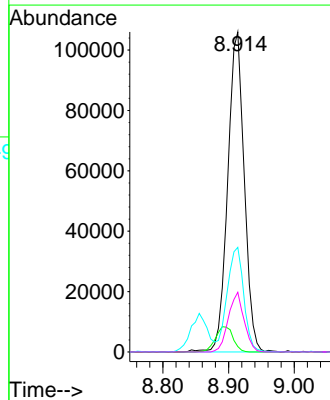


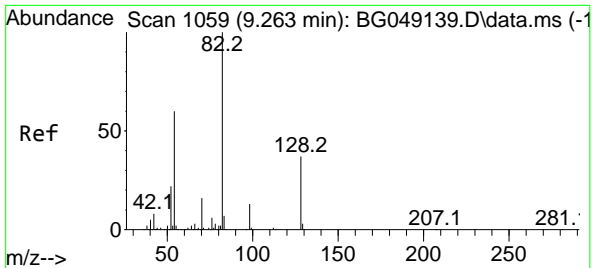
#22
 Acetophenone
 Concen: 42.467 ng
 RT: 8.914 min Scan# 1000
 Delta R.T. 0.001 min
 Lab File: BG049217.D
 Acq: 8 Jul 2021 12:45



Tgt Ion:105 Resp: 185699

Ion	Ratio	Lower	Upper
105	100		
71	1.7	0.6	0.8#
51	32.7	26.6	40.0
120	18.7	16.2	24.4



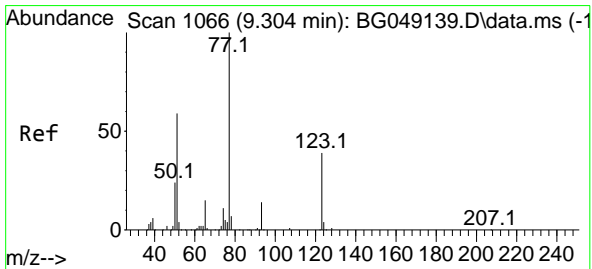
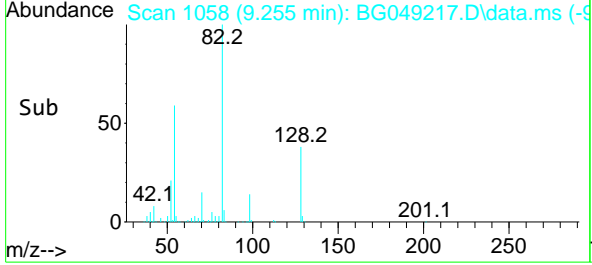
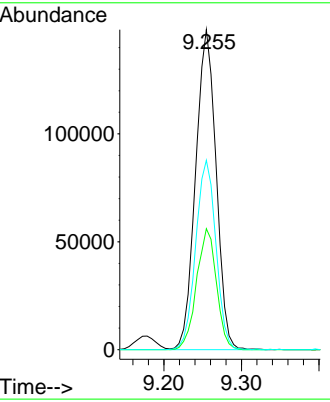
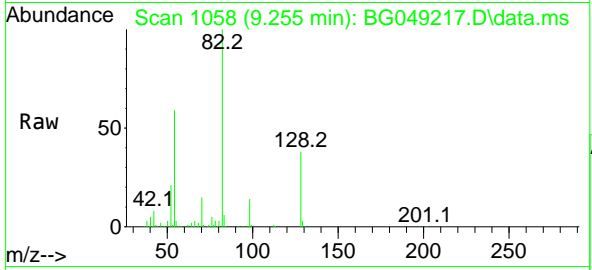


#23
 Nitrobenzene-d5
 Concen: 78.690 ng
 RT: 9.255 min Scan# 1058
 Delta R.T. 0.001 min
 Lab File: BG049217.D
 Acq: 8 Jul 2021 12:45

Instrument :
 BNA_G
ClientSampled :
 PB137570BS

Tgt Ion: 82 Resp: 272081

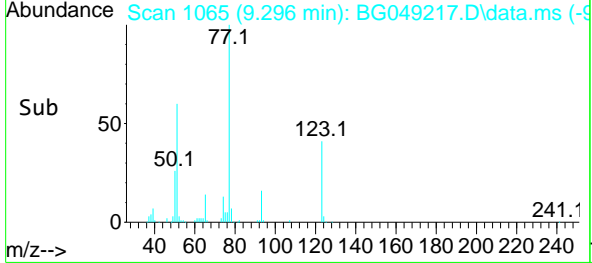
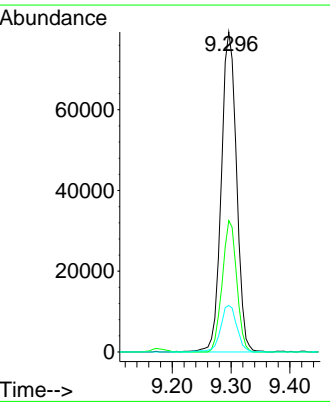
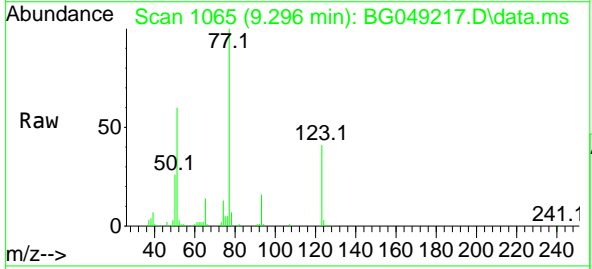
Ion	Ratio	Lower	Upper
82	100		
128	37.8	29.8	44.6
54	59.2	45.8	68.8

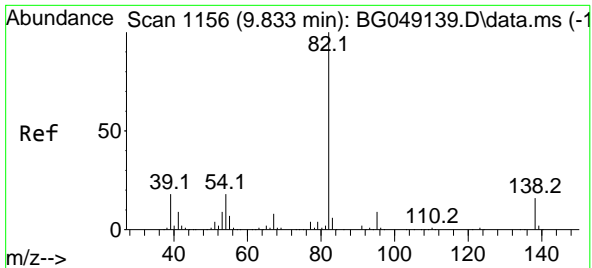


#24
 Nitrobenzene
 Concen: 38.063 ng
 RT: 9.296 min Scan# 1065
 Delta R.T. 0.001 min
 Lab File: BG049217.D
 Acq: 8 Jul 2021 12:45

Tgt Ion: 77 Resp: 142601

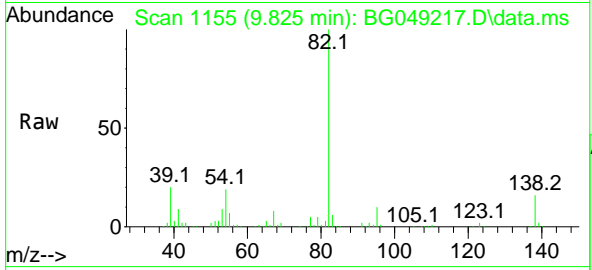
Ion	Ratio	Lower	Upper
77	100		
123	41.1	27.5	41.3
65	14.5	12.6	18.8





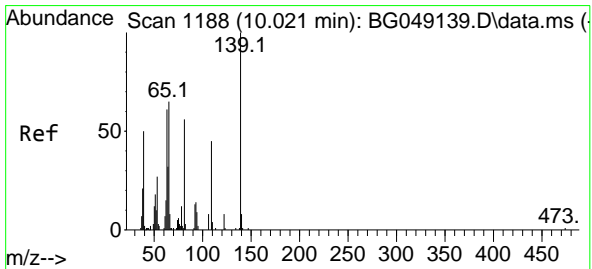
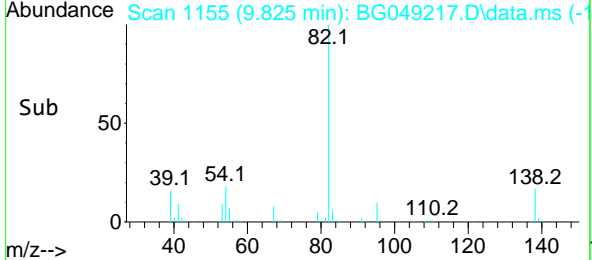
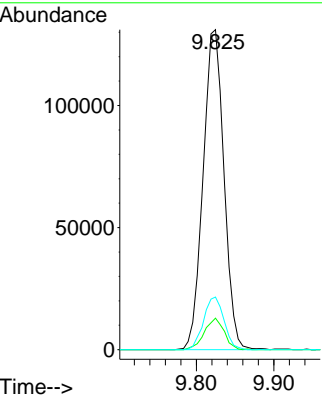
#25
 Isophorone
 Concen: 36.934 ng
 RT: 9.825 min Scan# 1155
 Delta R.T. 0.007 min
 Lab File: BG049217.D
 Acq: 8 Jul 2021 12:45

Instrument :
 BNA_G
 ClientSampled :
 PB137570BS

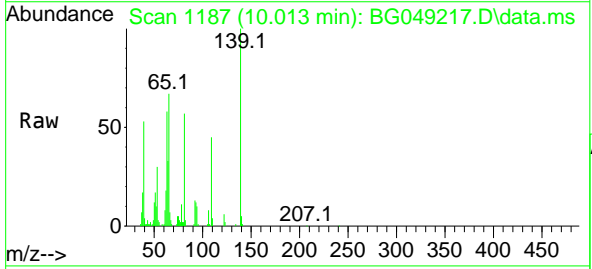


Tgt Ion: 82 Resp: 245304

Ion	Ratio	Lower	Upper
82	100		
95	9.8	8.5	12.7
138	16.5	11.8	17.6

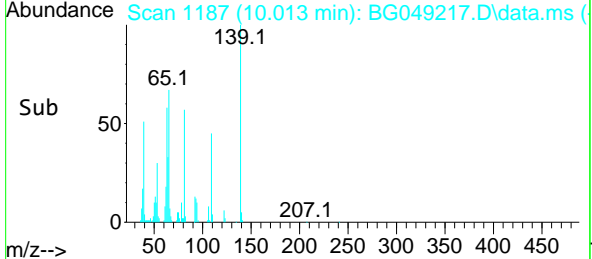
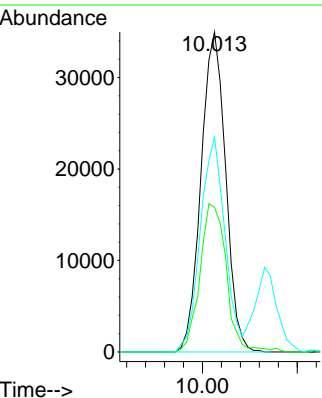


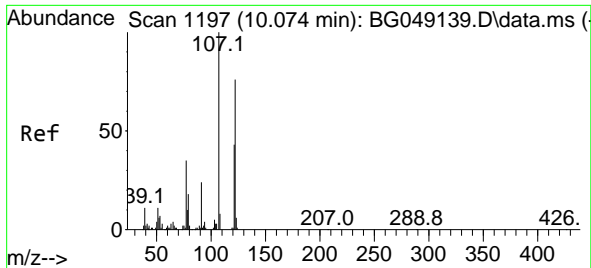
#26
 2-Nitrophenol
 Concen: 42.196 ng
 RT: 10.013 min Scan# 1187
 Delta R.T. 0.001 min
 Lab File: BG049217.D
 Acq: 8 Jul 2021 12:45



Tgt Ion: 139 Resp: 62935

Ion	Ratio	Lower	Upper
139	100		
109	45.2	37.8	56.6
65	67.2	51.8	77.8

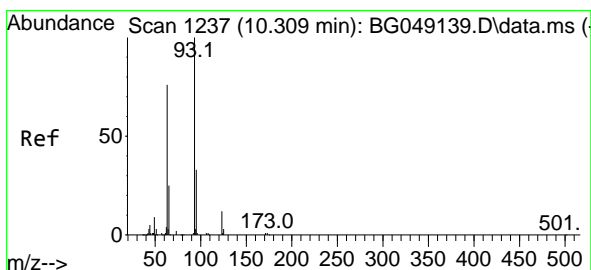
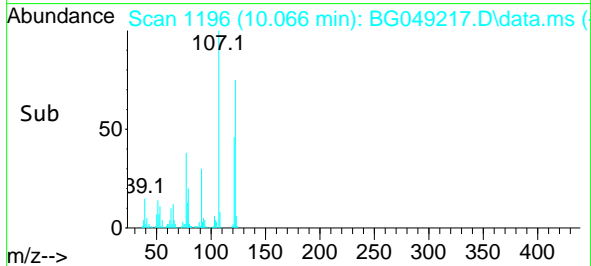
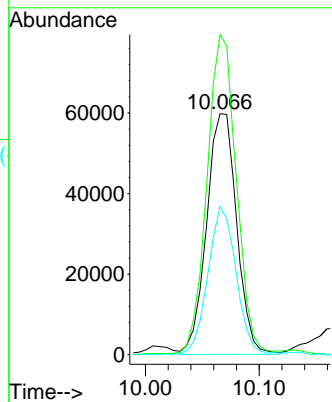
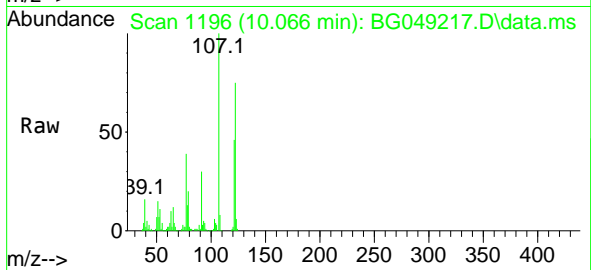




#27
2,4-Dimethylphenol
Concen: 49.061 ng
RT: 10.066 min Scan# 1196
Delta R.T. 0.001 min
Lab File: BG049217.D
Acq: 8 Jul 2021 12:45

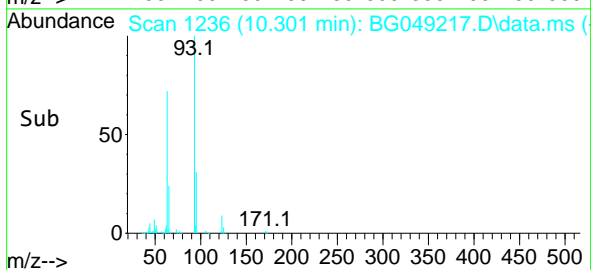
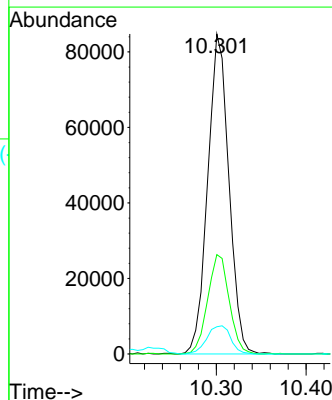
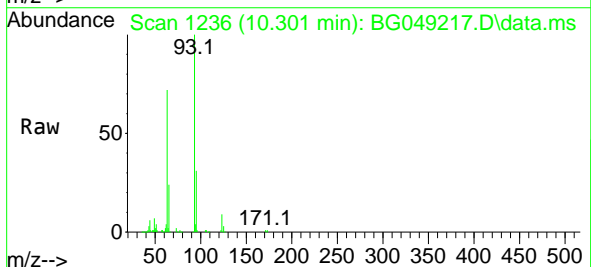
Instrument :
BNA_G
ClientSampled :
PB137570BS

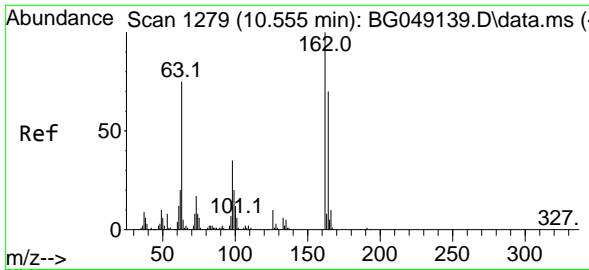
Tgt Ion:122 Resp: 109787
Ion Ratio Lower Upper
122 100
107 132.8 110.1 165.1
121 61.5 49.0 73.6



#28
bis(2-Chloroethoxy)methane
Concen: 44.282 ng
RT: 10.301 min Scan# 1236
Delta R.T. 0.001 min
Lab File: BG049217.D
Acq: 8 Jul 2021 12:45

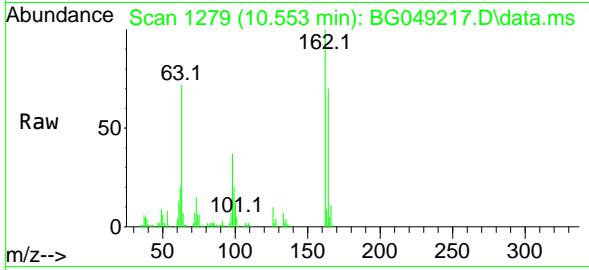
Tgt Ion: 93 Resp: 138684
Ion Ratio Lower Upper
93 100
95 31.1 22.2 33.4
123 8.5 8.8 13.2#





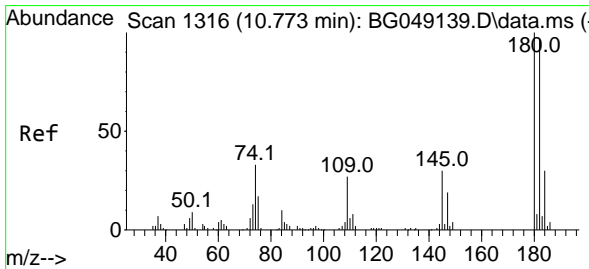
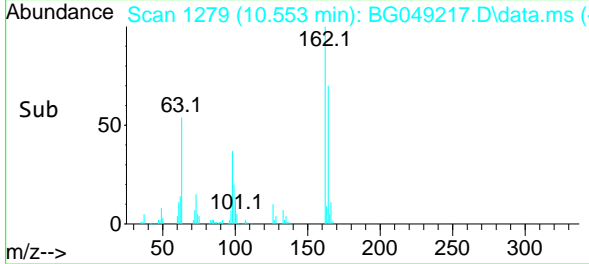
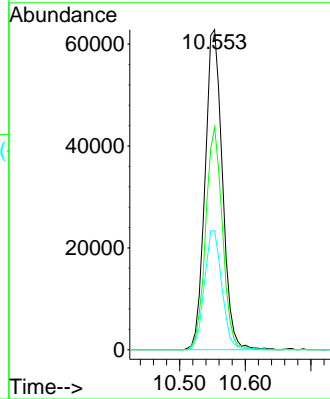
#29
 2,4-Dichlorophenol
 Concen: 43.186 ng
 RT: 10.553 min Scan# 1279
 Delta R.T. 0.001 min
 Lab File: BG049217.D
 Acq: 8 Jul 2021 12:45

Instrument :
 BNA_G
 ClientSampled :
 PB137570BS

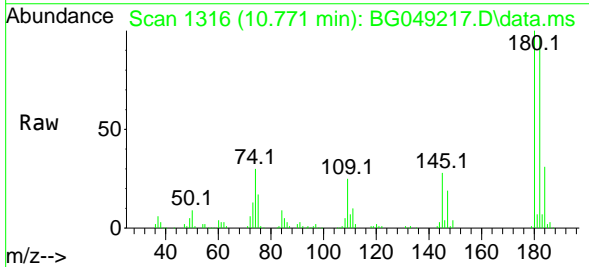


Tgt Ion:162 Resp: 115894

Ion	Ratio	Lower	Upper
162	100		
164	69.6	39.4	79.4
98	37.1	18.7	58.7

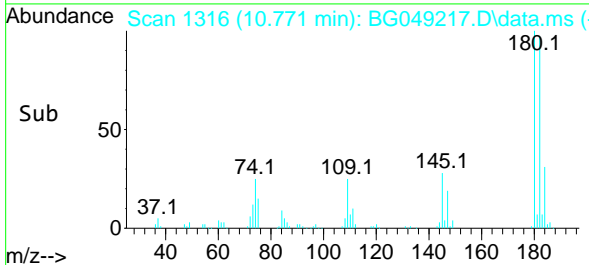
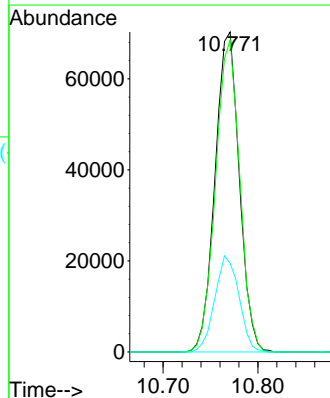


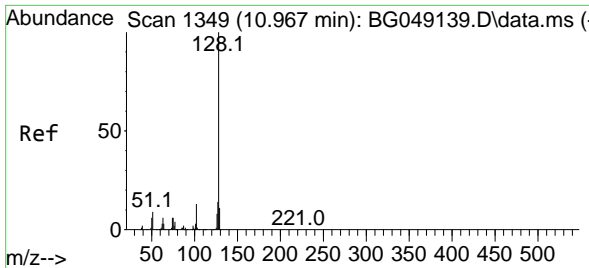
#30
 1,2,4-Trichlorobenzene
 Concen: 39.530 ng
 RT: 10.771 min Scan# 1316
 Delta R.T. 0.007 min
 Lab File: BG049217.D
 Acq: 8 Jul 2021 12:45



Tgt Ion:180 Resp: 124931

Ion	Ratio	Lower	Upper
180	100		
182	97.5	78.9	118.3
145	27.7	26.2	39.4

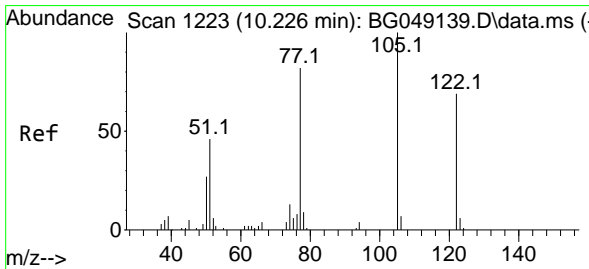
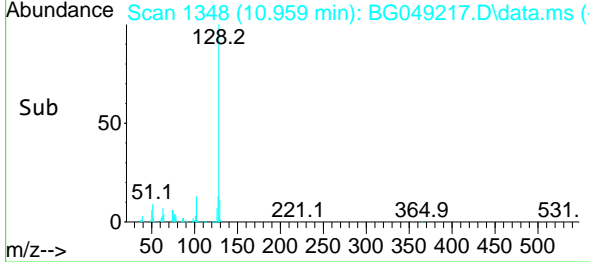
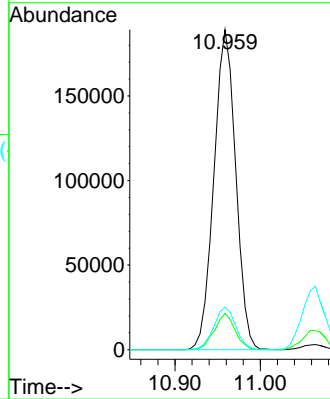
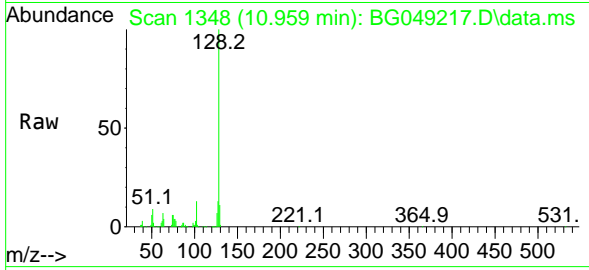




#31
 Naphthalene
 Concen: 39.338 ng
 RT: 10.959 min Scan# 1348
 Delta R.T. 0.001 min
 Lab File: BG049217.D
 Acq: 8 Jul 2021 12:45

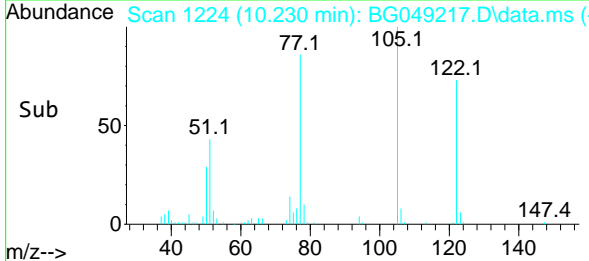
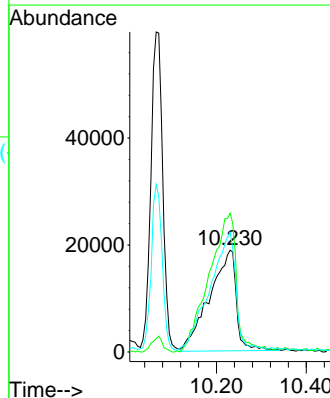
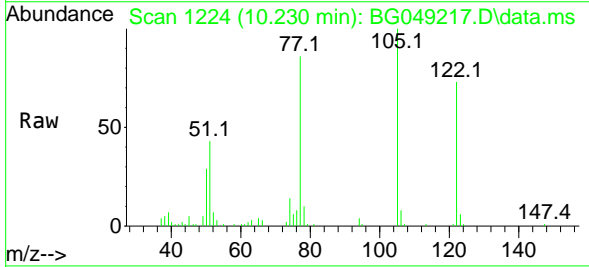
Instrument :
 BNA_G
 ClientSampled :
 PB137570BS

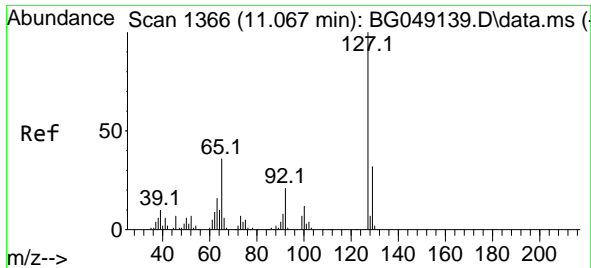
Tgt Ion:128 Resp: 335753
 Ion Ratio Lower Upper
 128 100
 129 11.4 8.5 12.7
 127 13.3 10.2 15.4



#32
 Benzoic acid
 Concen: 43.947 ng
 RT: 10.230 min Scan# 1224
 Delta R.T. 0.007 min
 Lab File: BG049217.D
 Acq: 8 Jul 2021 12:45

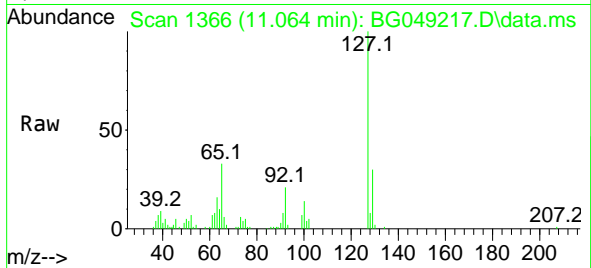
Tgt Ion:122 Resp: 78325
 Ion Ratio Lower Upper
 122 100
 105 136.4 92.3 132.3#
 77 117.7 66.5 106.5#





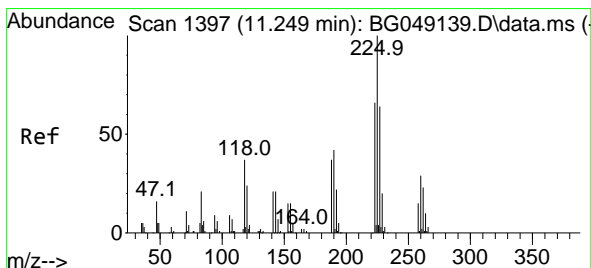
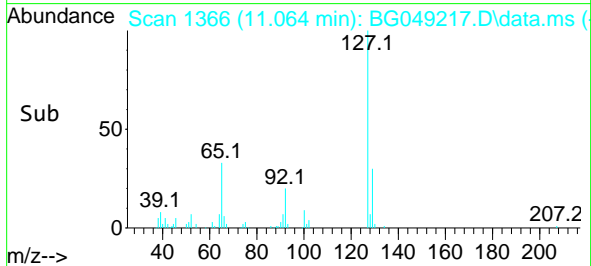
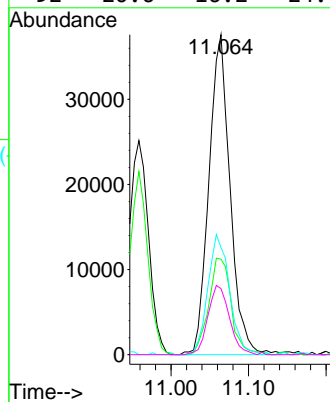
#33
 4-Chloroaniline
 Concen: 20.251 ng
 RT: 11.064 min Scan# 1366
 Delta R.T. 0.007 min
 Lab File: BG049217.D
 Acq: 8 Jul 2021 12:45

Instrument :
 BNA_G
 ClientSampled :
 PB137570BS



Tgt Ion:127 Resp: 71472

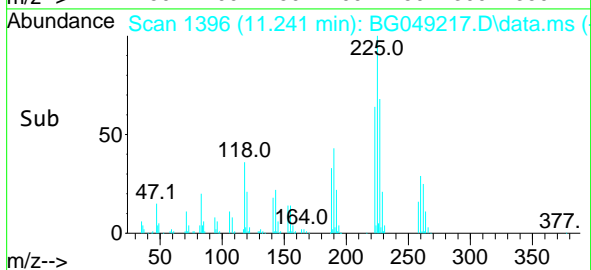
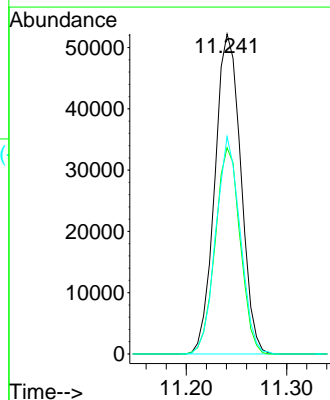
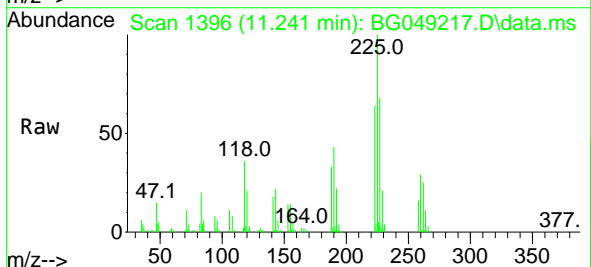
Ion	Ratio	Lower	Upper
127	100		
129	29.8	26.7	40.1
65	33.4	32.8	49.2
92	20.6	16.2	24.4

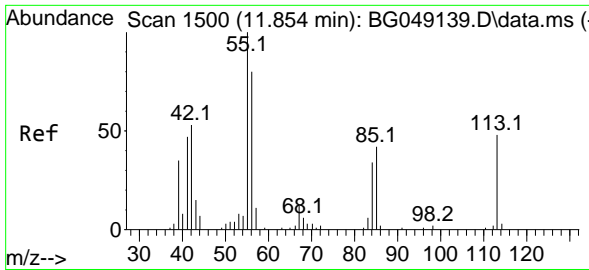


#34
 Hexachlorobutadiene
 Concen: 40.114 ng
 RT: 11.241 min Scan# 1396
 Delta R.T. 0.001 min
 Lab File: BG049217.D
 Acq: 8 Jul 2021 12:45

Tgt Ion:225 Resp: 93665

Ion	Ratio	Lower	Upper
225	100		
223	64.5	49.8	74.8
227	67.9	46.4	69.6

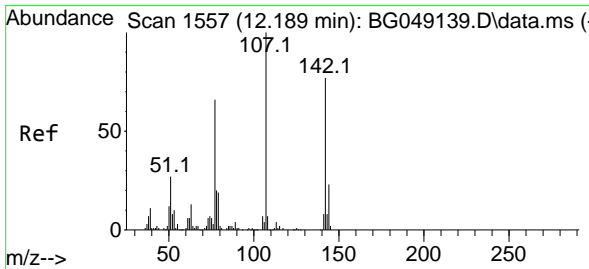
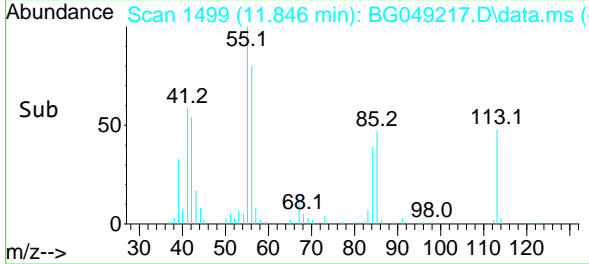
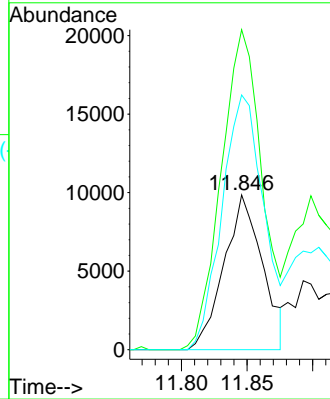
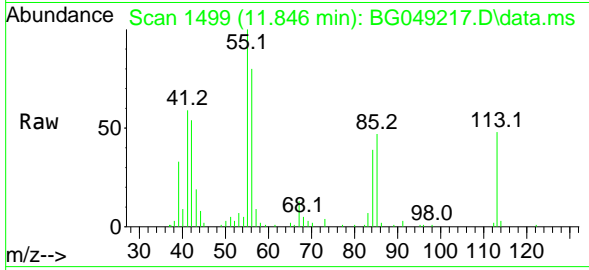




#35
 Caprolactam
 Concen: 23.536 ng
 RT: 11.846 min Scan# 1499
 Delta R.T. 0.001 min
 Lab File: BG049217.D
 Acq: 8 Jul 2021 12:45

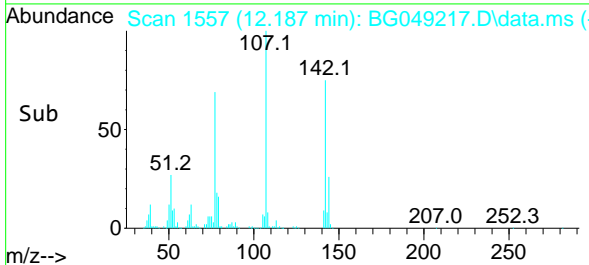
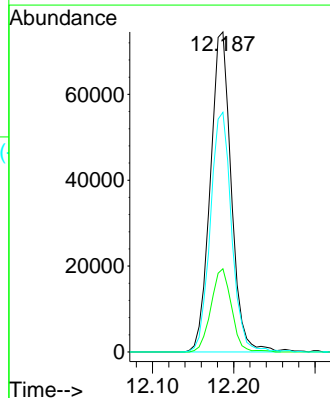
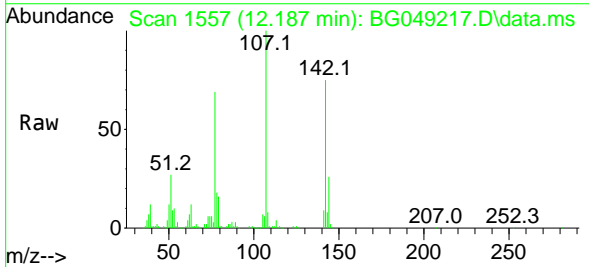
Instrument :
 BNA_G
 ClientSampled :
 PB137570BS

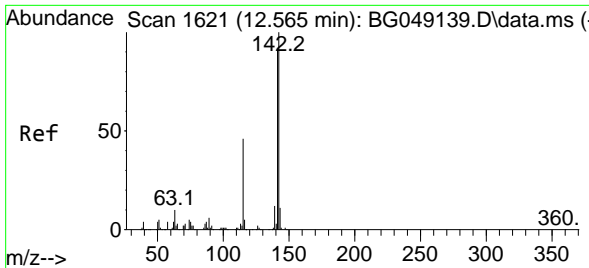
Tgt Ion:113 Resp: 20047
 Ion Ratio Lower Upper
 113 100
 55 206.8 113.8 153.8#
 56 164.6 105.6 145.6#



#36
 4-Chloro-3-methylphenol
 Concen: 43.187 ng
 RT: 12.187 min Scan# 1557
 Delta R.T. 0.007 min
 Lab File: BG049217.D
 Acq: 8 Jul 2021 12:45

Tgt Ion:107 Resp: 133357
 Ion Ratio Lower Upper
 107 100
 144 26.0 24.8 37.2
 142 74.9 62.2 93.4



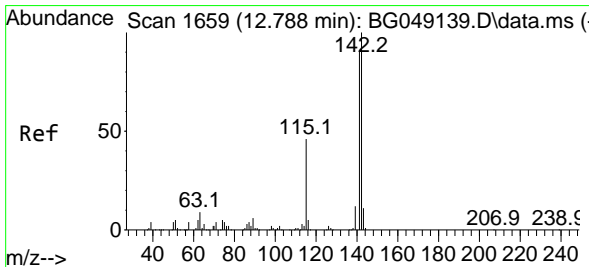
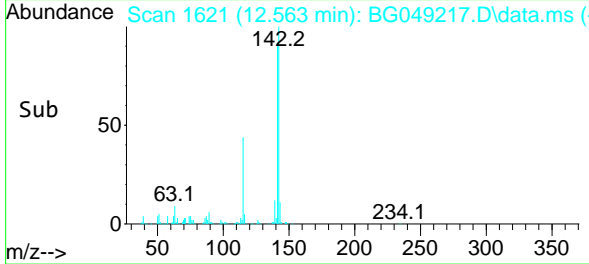
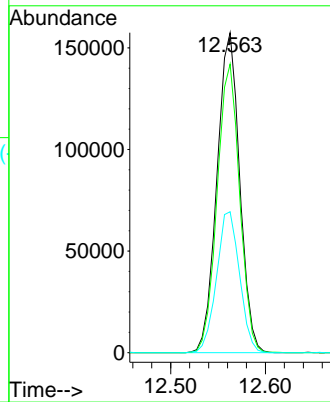
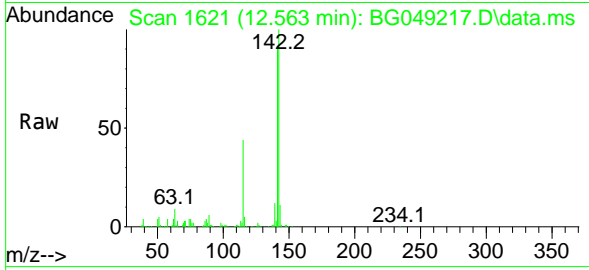


#37
 2-Methylnaphthalene
 Concen: 40.747 ng
 RT: 12.563 min Scan# 1621
 Delta R.T. 0.001 min
 Lab File: BG049217.D
 Acq: 8 Jul 2021 12:45

Instrument :
 BNA_G
 ClientSampled :
 PB137570BS

Tgt Ion:142 Resp: 261898

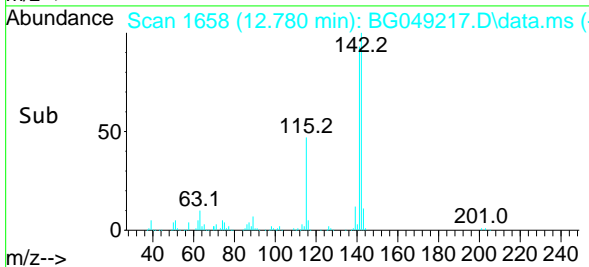
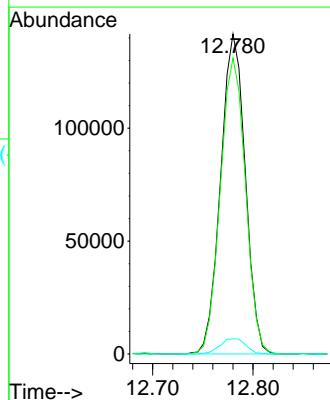
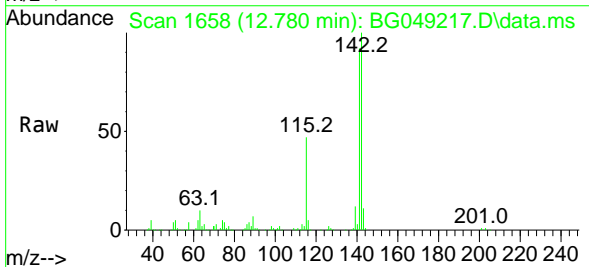
Ion	Ratio	Lower	Upper
142	100		
141	90.2	68.8	103.2
115	44.0	36.4	54.6

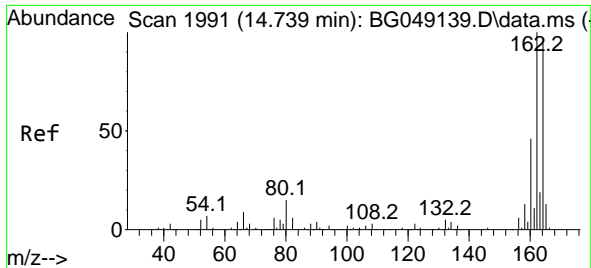


#38
 1-Methylnaphthalene
 Concen: 39.602 ng
 RT: 12.780 min Scan# 1658
 Delta R.T. 0.001 min
 Lab File: BG049217.D
 Acq: 8 Jul 2021 12:45

Tgt Ion:142 Resp: 241058

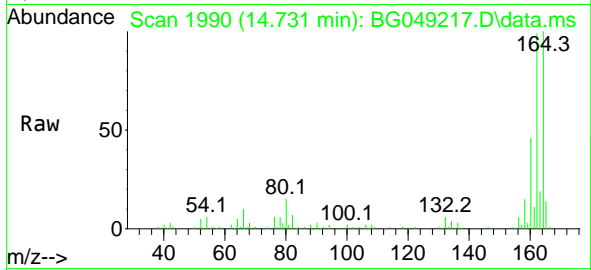
Ion	Ratio	Lower	Upper
142	100		
141	92.5	70.6	106.0
116	4.7	4.0	6.0



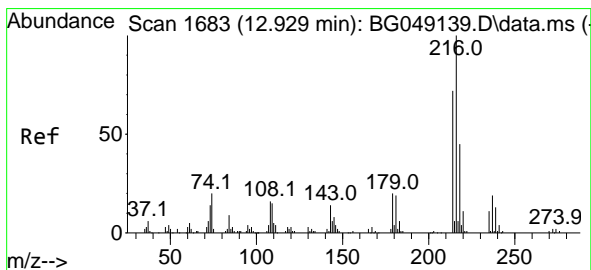
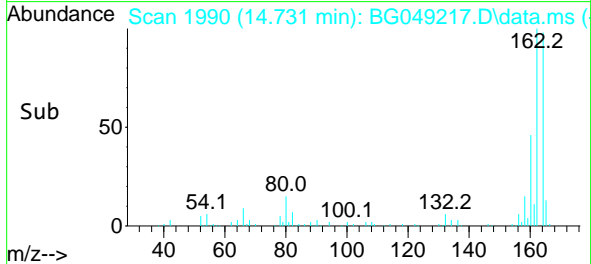
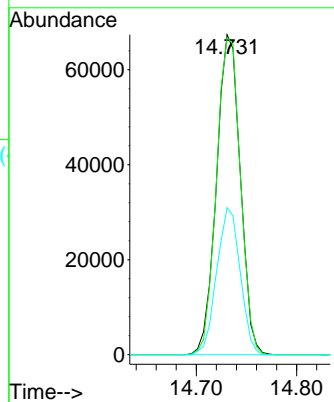


#39
 Acenaphthene-d10
 Concen: 20.000 ng
 RT: 14.731 min Scan# 1990
 Delta R.T. 0.001 min
 Lab File: BG049217.D
 Acq: 8 Jul 2021 12:45

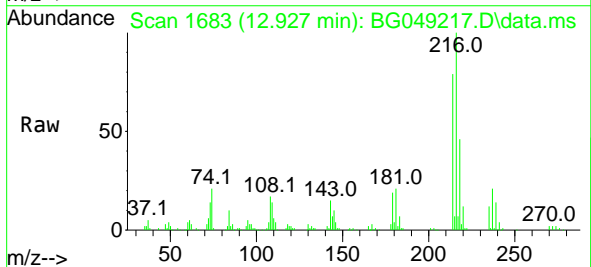
Instrument :
 BNA_G
 ClientSampled :
 PB137570BS



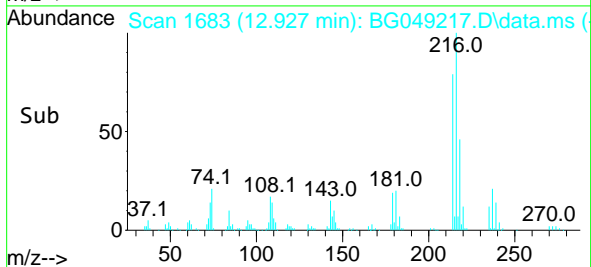
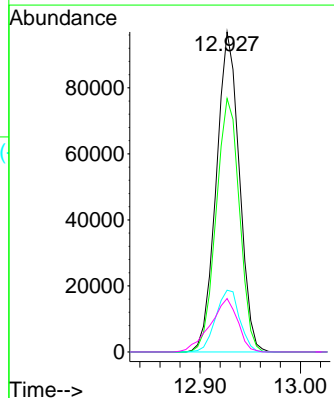
Tgt Ion:164 Resp: 110836
 Ion Ratio Lower Upper
 164 100
 162 99.1 81.4 122.0
 160 45.9 34.9 52.3

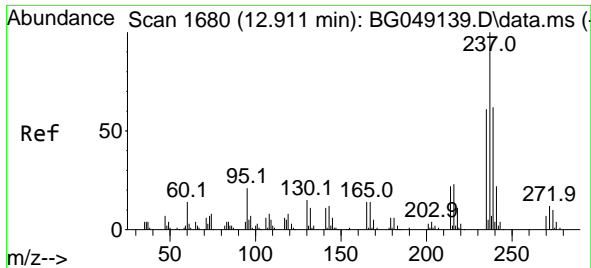


#40
 1,2,4,5-Tetrachlorobenzene
 Concen: 39.925 ng
 RT: 12.927 min Scan# 1683
 Delta R.T. 0.001 min
 Lab File: BG049217.D
 Acq: 8 Jul 2021 12:45



Tgt Ion:216 Resp: 154379
 Ion Ratio Lower Upper
 216 100
 214 79.9 61.4 92.2
 179 20.1 17.3 25.9
 108 19.8 16.3 24.5

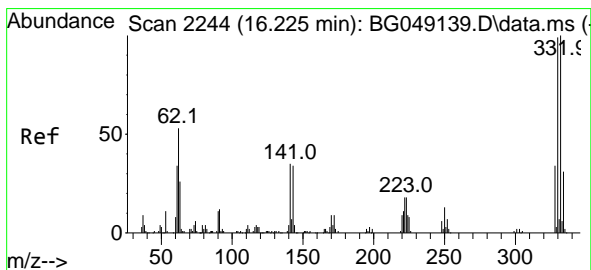
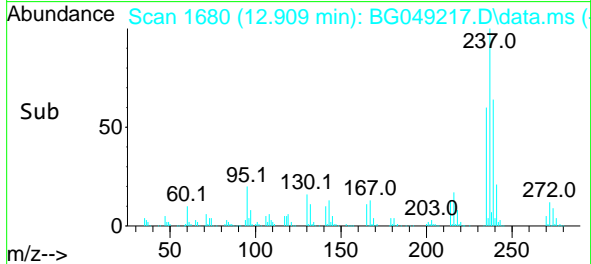
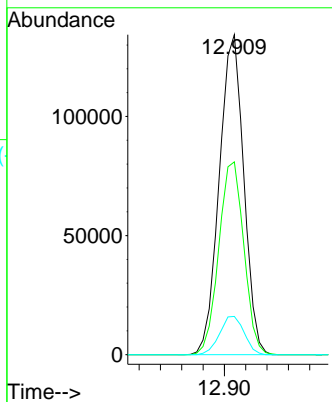
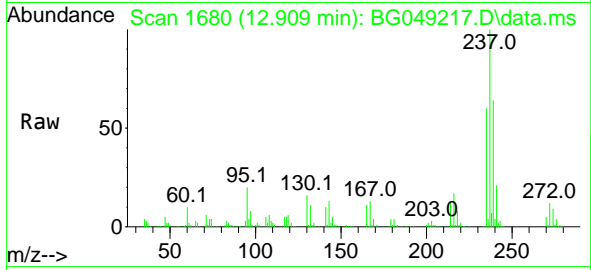




#41
 Hexachlorocyclopentadiene
 Concen: 93.388 ng
 RT: 12.909 min Scan# 1680
 Delta R.T. 0.001 min
 Lab File: BG049217.D
 Acq: 8 Jul 2021 12:45

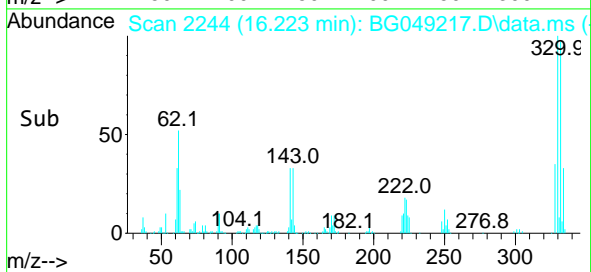
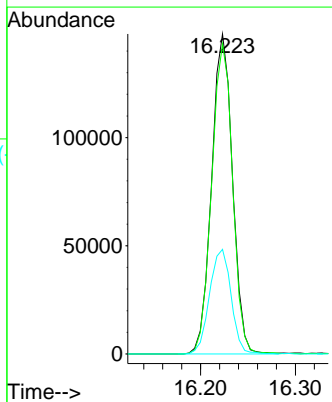
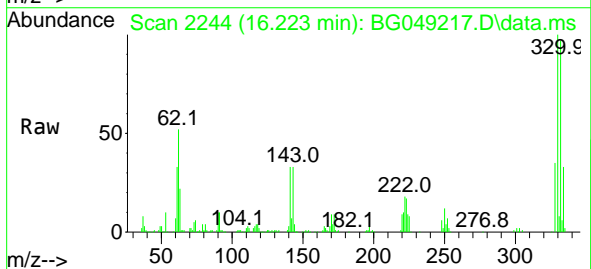
Instrument :
 BNA_G
ClientSampled :
 PB137570BS

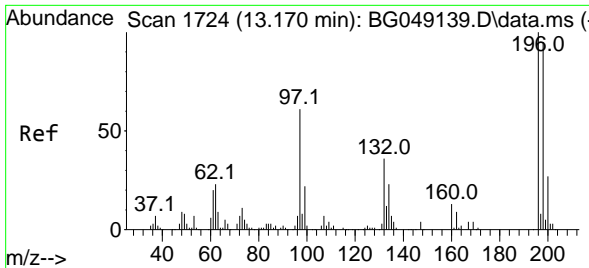
Tgt Ion	Resp	Lower	Upper
237	100		
235	60.2	36.6	76.6
272	12.0	0.0	32.5



#42
 2,4,6-Tribromophenol
 Concen: 117.584 ng
 RT: 16.223 min Scan# 2244
 Delta R.T. 0.007 min
 Lab File: BG049217.D
 Acq: 8 Jul 2021 12:45

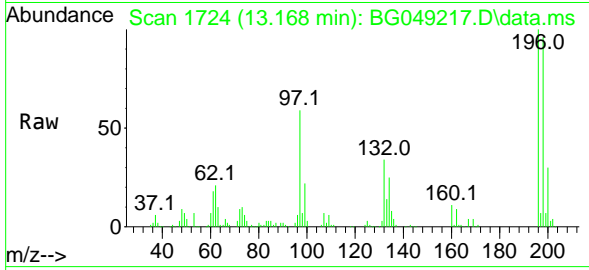
Tgt Ion	Resp	Lower	Upper
330	100		
332	97.4	77.3	115.9
141	33.9	35.6	53.4



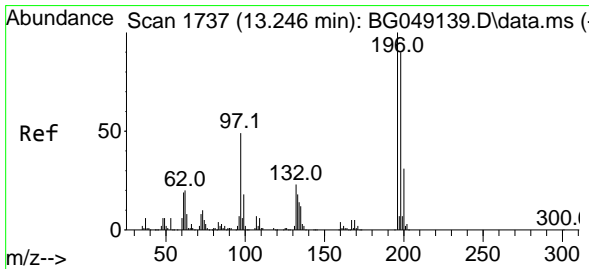
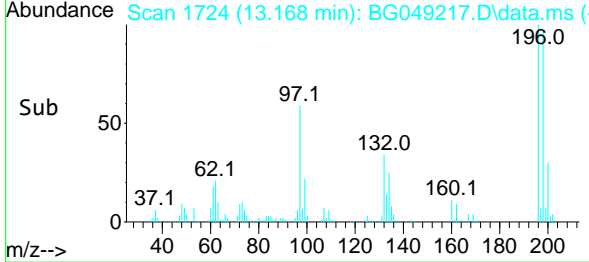
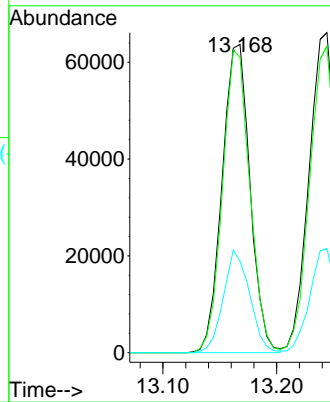


#43
 2,4,6-Trichlorophenol
 Concen: 40.686 ng
 RT: 13.168 min Scan# 1724
 Delta R.T. 0.007 min
 Lab File: BG049217.D
 Acq: 8 Jul 2021 12:45

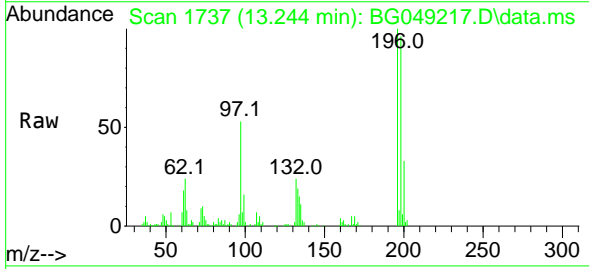
Instrument :
 BNA_G
ClientSampled :
 PB137570BS



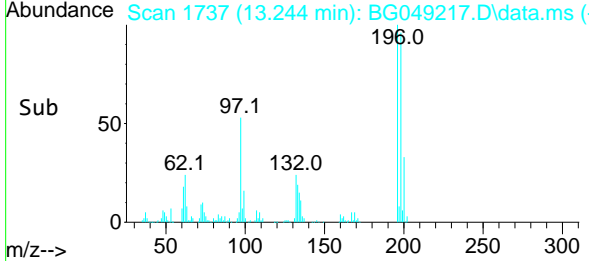
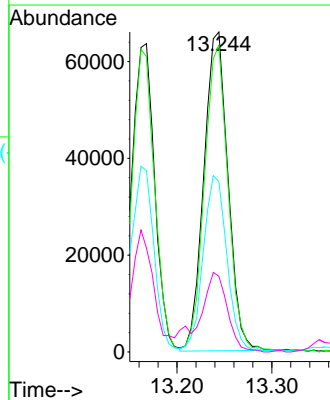
Tgt Ion:196 Resp: 108636
 Ion Ratio Lower Upper
 196 100
 198 95.7 82.1 123.1
 200 29.7 23.8 35.8

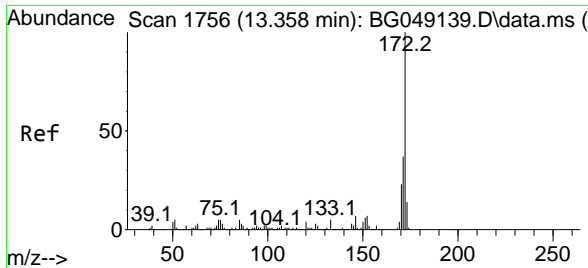


#44
 2,4,5-Trichlorophenol
 Concen: 39.865 ng
 RT: 13.244 min Scan# 1737
 Delta R.T. 0.007 min
 Lab File: BG049217.D
 Acq: 8 Jul 2021 12:45



Tgt Ion:196 Resp: 116403
 Ion Ratio Lower Upper
 196 100
 198 95.8 87.4 131.0
 97 53.2 43.3 64.9
 132 23.6 21.4 32.2

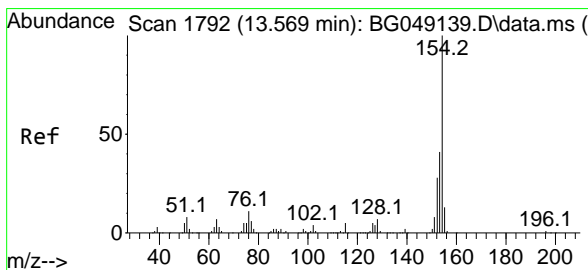
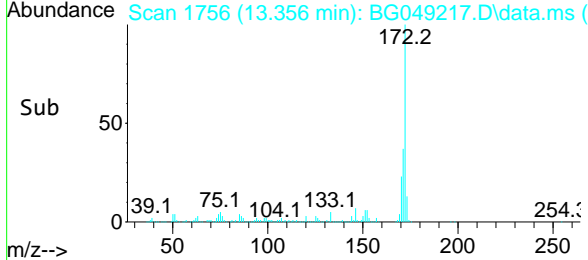
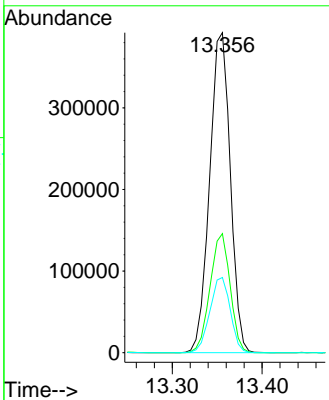
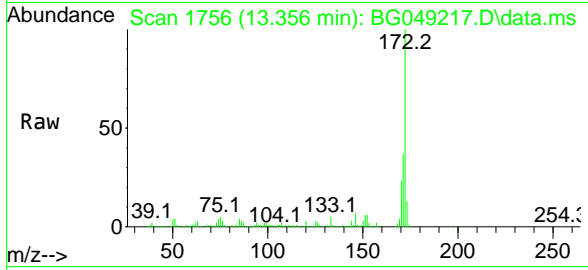




#45
 2-Fluorobiphenyl
 Concen: 76.225 ng
 RT: 13.356 min Scan# 1756
 Delta R.T. 0.007 min
 Lab File: BG049217.D
 Acq: 8 Jul 2021 12:45

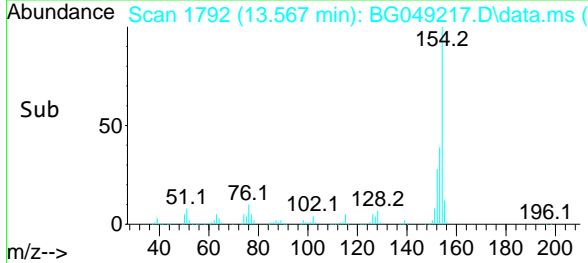
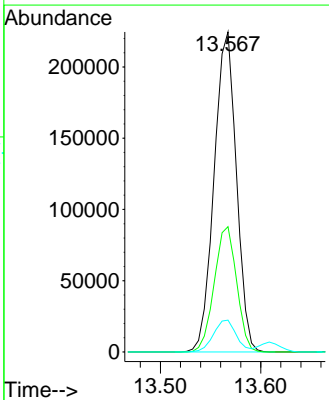
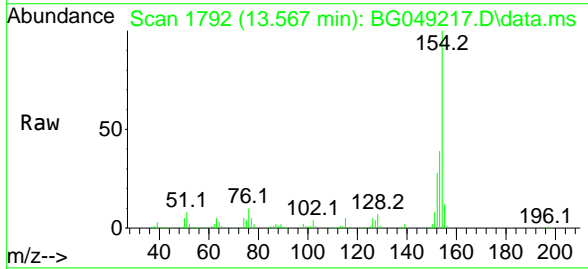
Instrument :
 BNA_G
ClientSampled :
 PB137570BS

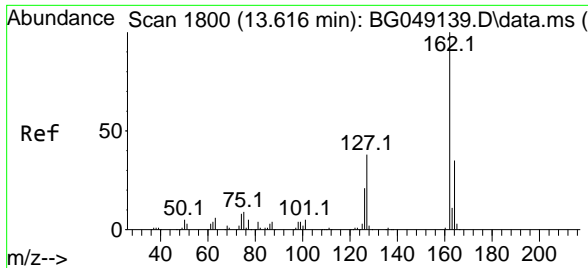
Tgt Ion	Resp	Lower	Upper
172	100		
171	37.2	28.6	43.0
170	23.5	18.6	27.8



#46
 1,1'-Biphenyl
 Concen: 41.739 ng
 RT: 13.567 min Scan# 1792
 Delta R.T. 0.007 min
 Lab File: BG049217.D
 Acq: 8 Jul 2021 12:45

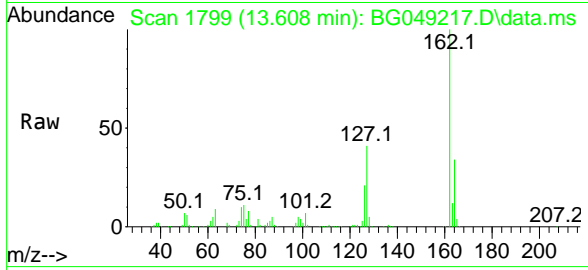
Tgt Ion	Resp	Lower	Upper
154	100		
153	39.2	20.5	60.5
76	9.9	0.0	29.3





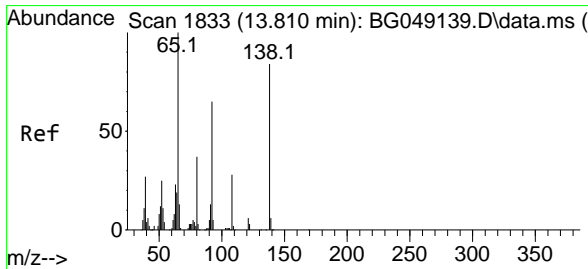
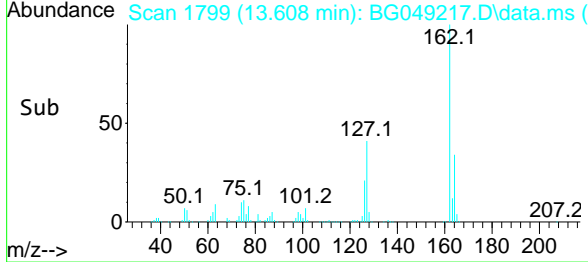
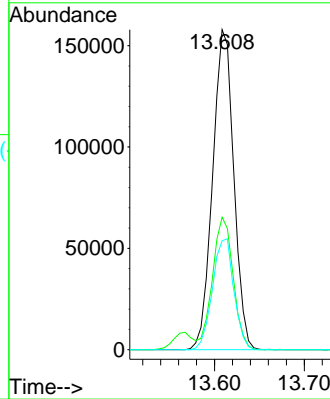
#47
 2-Chloronaphthalene
 Concen: 37.787 ng
 RT: 13.608 min Scan# 1799
 Delta R.T. 0.001 min
 Lab File: BG049217.D
 Acq: 8 Jul 2021 12:45

Instrument :
 BNA_G
 ClientSampleId :
 PB137570BS

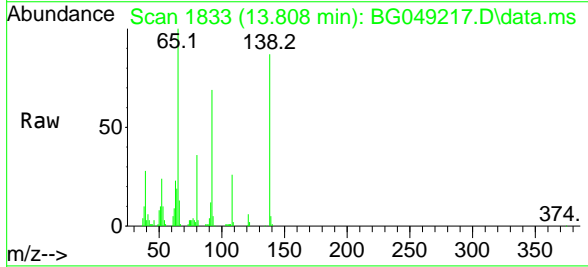


Tgt Ion:162 Resp: 257451

Ion	Ratio	Lower	Upper
162	100		
127	41.4	32.7	49.1
164	34.1	27.0	40.4

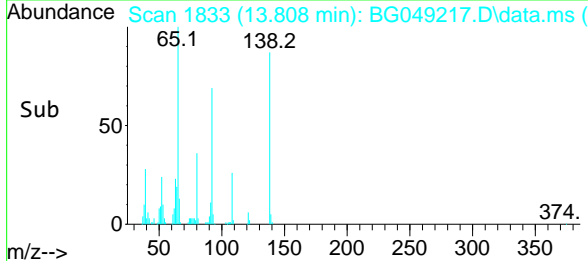
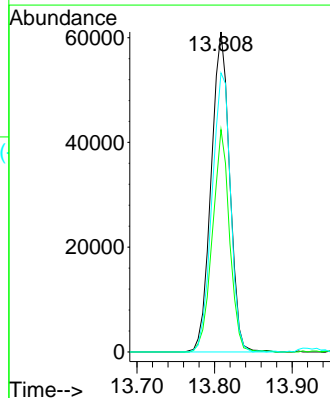


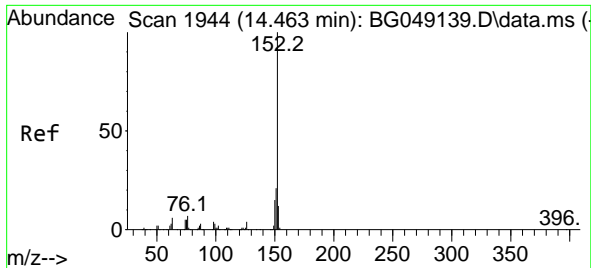
#48
 2-Nitroaniline
 Concen: 40.811 ng
 RT: 13.808 min Scan# 1833
 Delta R.T. 0.001 min
 Lab File: BG049217.D
 Acq: 8 Jul 2021 12:45



Tgt Ion: 65 Resp: 101390

Ion	Ratio	Lower	Upper
65	100		
92	69.5	47.2	70.8
138	87.2	68.0	102.0

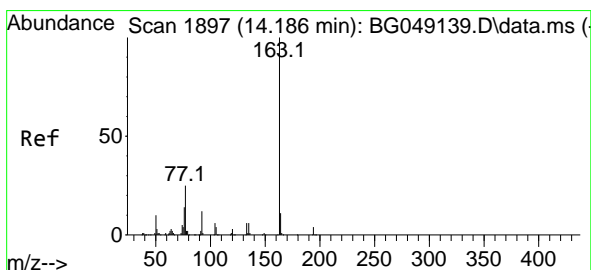
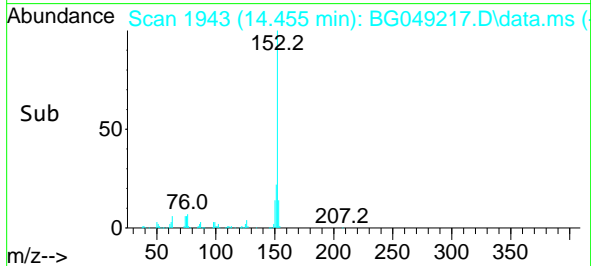
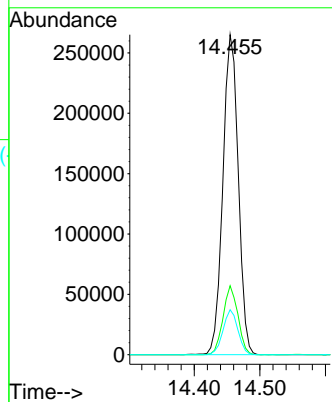
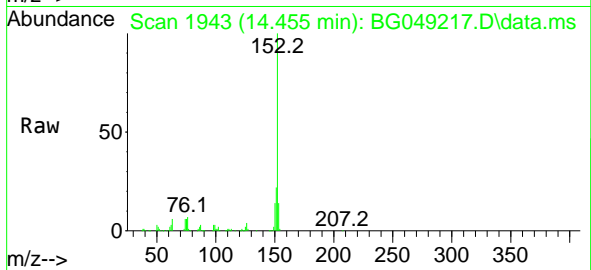




#49
 Acenaphthylene
 Concen: 40.036 ng
 RT: 14.455 min Scan# 1943
 Delta R.T. 0.001 min
 Lab File: BG049217.D
 Acq: 8 Jul 2021 12:45

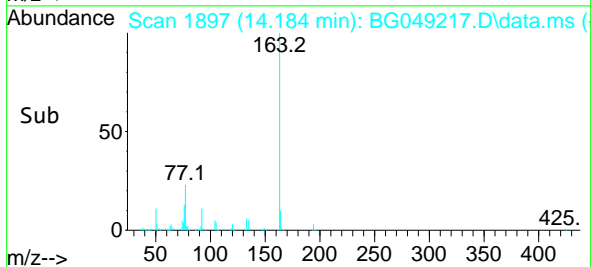
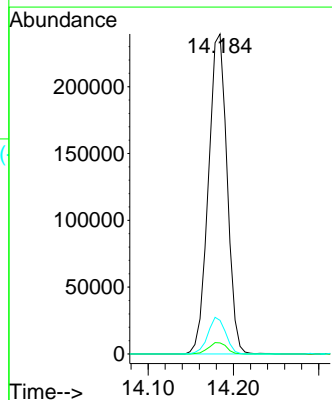
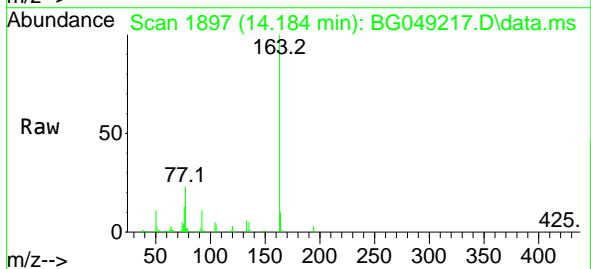
Instrument :
 BNA_G
 ClientSampled :
 PB137570BS

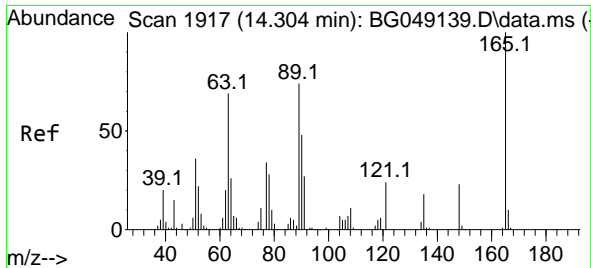
Tgt Ion:152 Resp: 430046
 Ion Ratio Lower Upper
 152 100
 151 21.5 18.2 27.4
 153 14.0 11.7 17.5



#50
 Dimethylphthalate
 Concen: 40.955 ng
 RT: 14.184 min Scan# 1897
 Delta R.T. 0.007 min
 Lab File: BG049217.D
 Acq: 8 Jul 2021 12:45

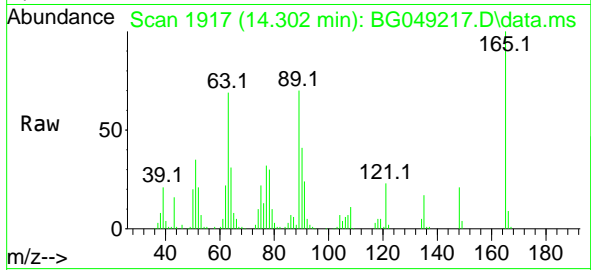
Tgt Ion:163 Resp: 364298
 Ion Ratio Lower Upper
 163 100
 194 3.4 3.0 4.6
 164 10.5 8.6 12.8



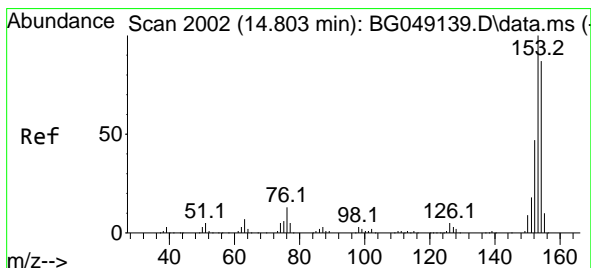
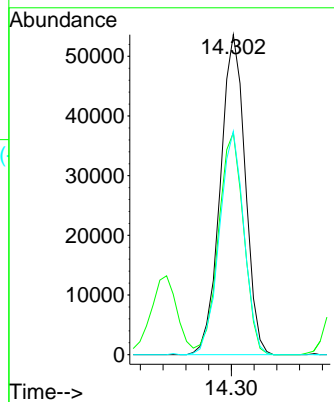
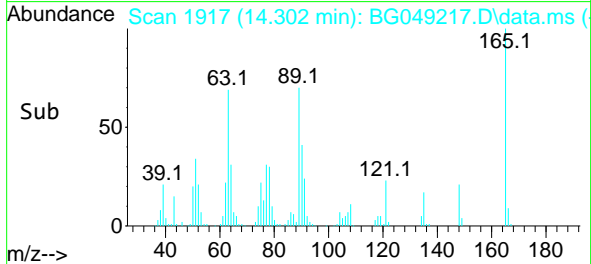


#51
 2,6-Dinitrotoluene
 Concen: 39.897 ng
 RT: 14.302 min Scan# 1917
 Delta R.T. 0.007 min
 Lab File: BG049217.D
 Acq: 8 Jul 2021 12:45

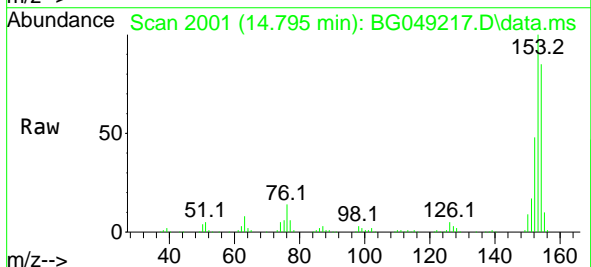
Instrument :
 BNA_G
 ClientSampled :
 PB137570BS



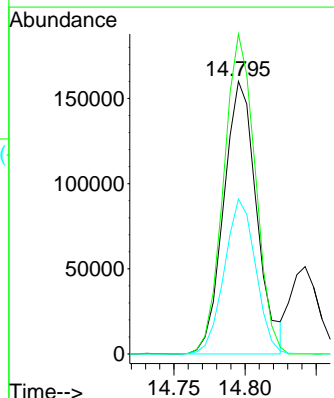
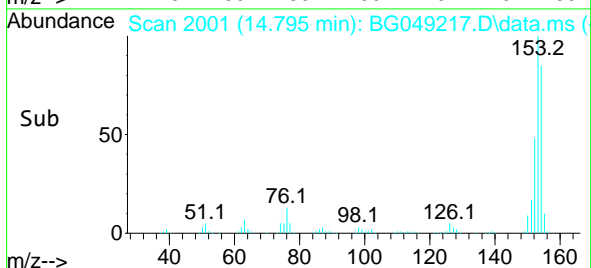
Tgt Ion:165 Resp: 81356
 Ion Ratio Lower Upper
 165 100
 63 69.3 63.3 94.9
 89 69.8 63.4 95.0

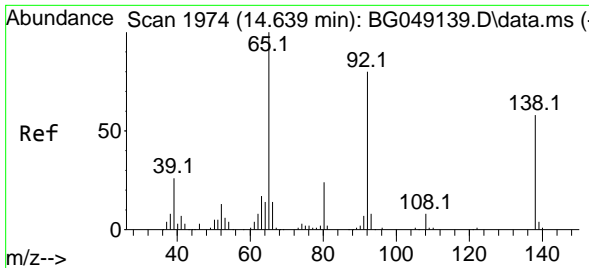


#52
 Acenaphthene
 Concen: 38.634 ng
 RT: 14.795 min Scan# 2001
 Delta R.T. 0.001 min
 Lab File: BG049217.D
 Acq: 8 Jul 2021 12:45



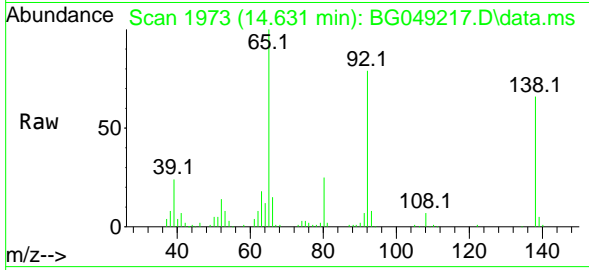
Tgt Ion:154 Resp: 258643
 Ion Ratio Lower Upper
 154 100
 153 117.3 87.0 130.4
 152 56.8 40.1 60.1



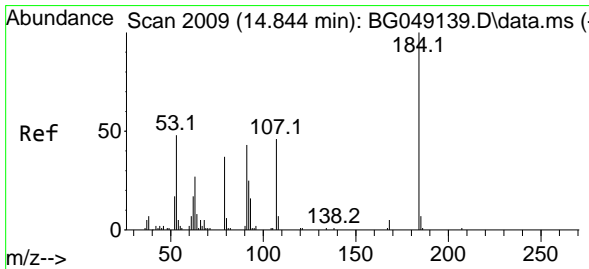
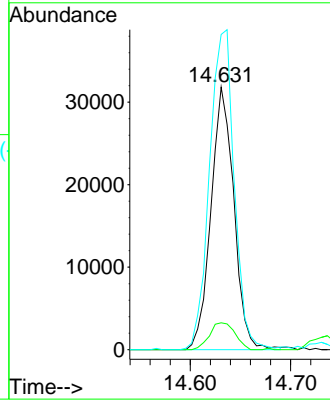
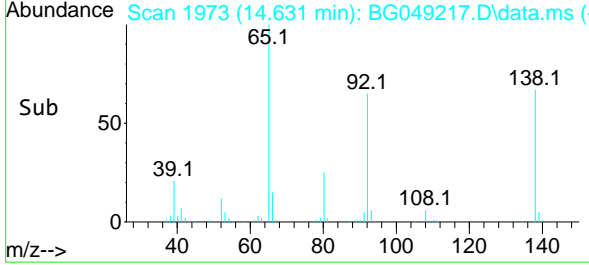


#53
 3-Nitroaniline
 Concen: 25.784 ng
 RT: 14.631 min Scan# 1973
 Delta R.T. 0.001 min
 Lab File: BG049217.D
 Acq: 8 Jul 2021 12:45

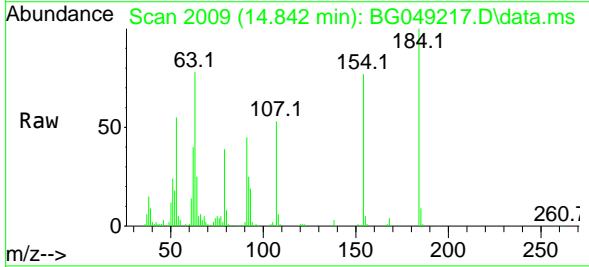
Instrument :
 BNA_G
 ClientSampled :
 PB137570BS



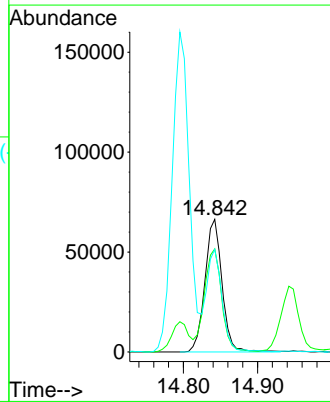
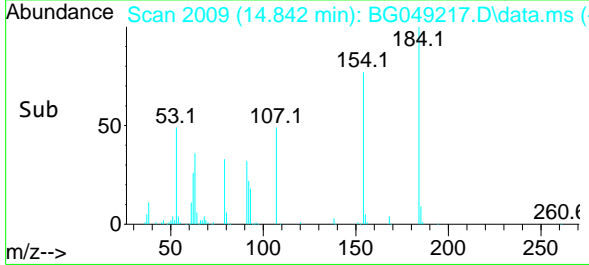
Tgt Ion:138 Resp: 50504
 Ion Ratio Lower Upper
 138 100
 108 10.2 8.3 12.5
 92 120.1 96.4 144.6

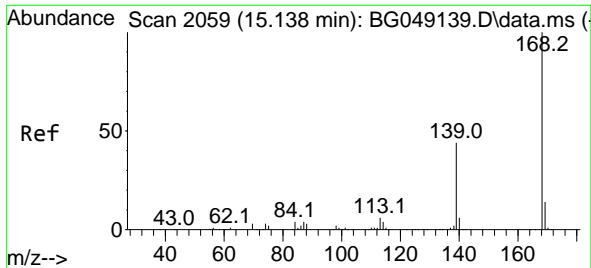


#54
 2,4-Dinitrophenol
 Concen: 76.360 ng
 RT: 14.842 min Scan# 2009
 Delta R.T. 0.007 min
 Lab File: BG049217.D
 Acq: 8 Jul 2021 12:45



Tgt Ion:184 Resp: 106568
 Ion Ratio Lower Upper
 184 100
 63 77.8 68.3 102.5
 154 77.3 62.6 93.8

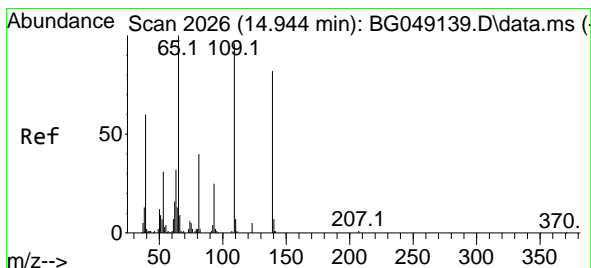
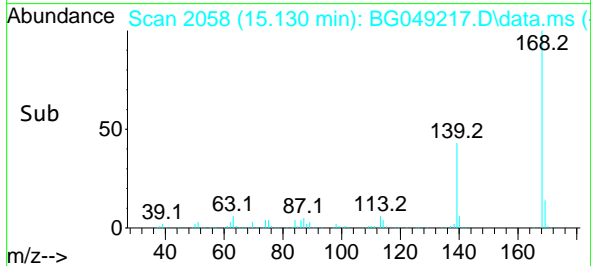
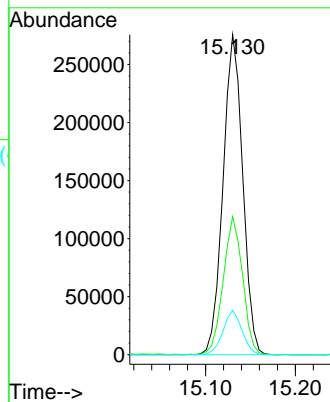
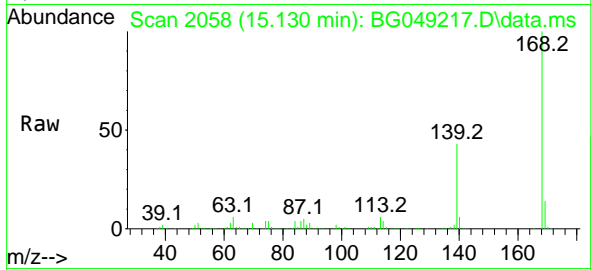




#55
 Dibenzofuran
 Concen: 38.426 ng
 RT: 15.130 min Scan# 2058
 Delta R.T. 0.001 min
 Lab File: BG049217.D
 Acq: 8 Jul 2021 12:45

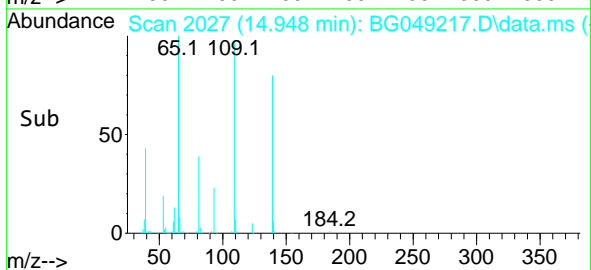
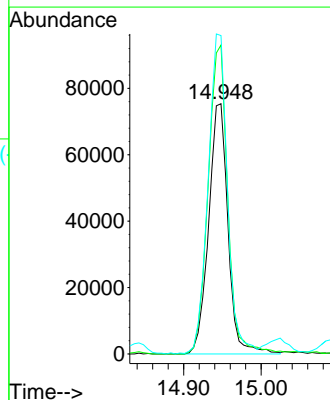
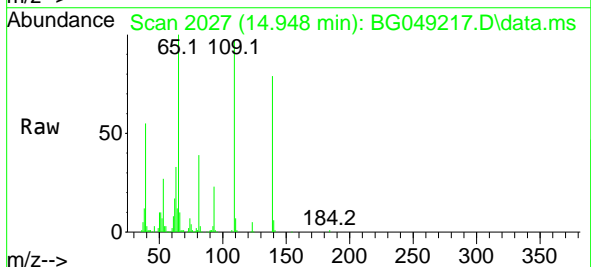
Instrument :
 BNA_G
 ClientSampled :
 PB137570BS

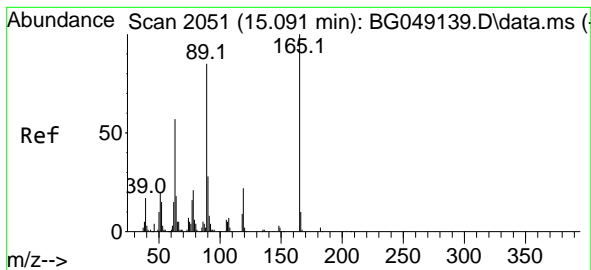
Tgt Ion:168 Resp: 418783
 Ion Ratio Lower Upper
 168 100
 139 43.1 33.4 50.2
 169 13.9 12.3 18.5



#56
 4-Nitrophenol
 Concen: 81.815 ng
 RT: 14.948 min Scan# 2027
 Delta R.T. 0.013 min
 Lab File: BG049217.D
 Acq: 8 Jul 2021 12:45

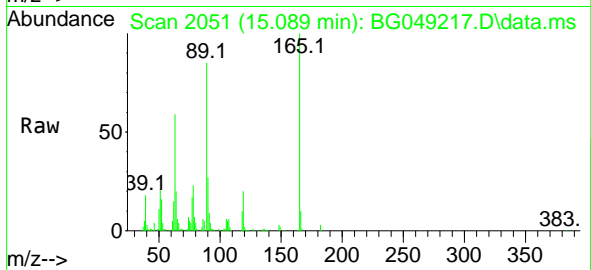
Tgt Ion:139 Resp: 130591
 Ion Ratio Lower Upper
 139 100
 109 123.5 116.3 156.3
 65 127.3 105.0 145.0





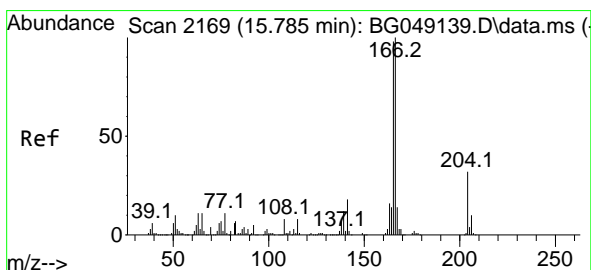
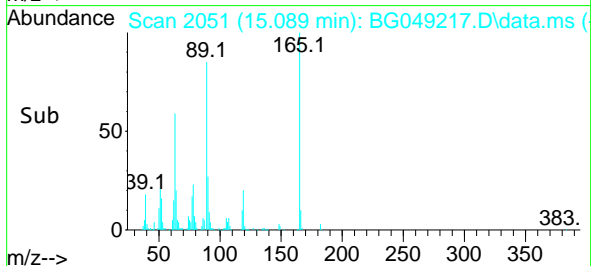
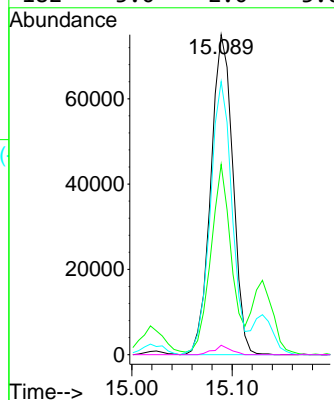
#57
 2,4-Dinitrotoluene
 Concen: 39.524 ng
 RT: 15.089 min Scan# 2051
 Delta R.T. 0.007 min
 Lab File: BG049217.D
 Acq: 8 Jul 2021 12:45

Instrument :
 BNA_G
 ClientSampled :
 PB137570BS

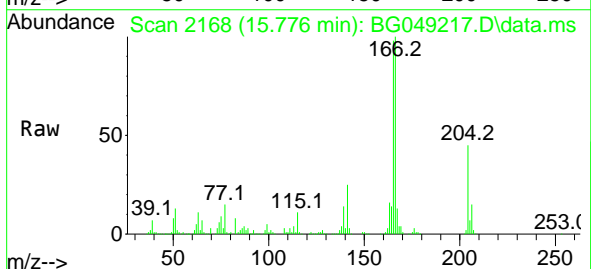


Tgt Ion:165 Resp: 114484

Ion	Ratio	Lower	Upper
165	100		
63	59.4	48.0	72.0
89	85.3	65.4	98.0
182	3.0	2.0	3.0

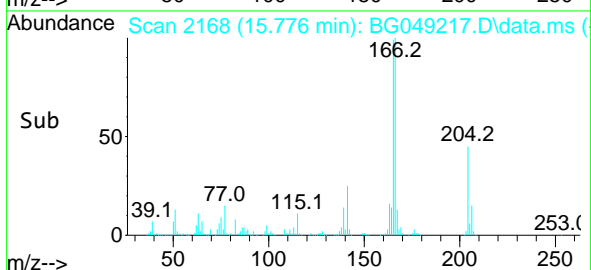
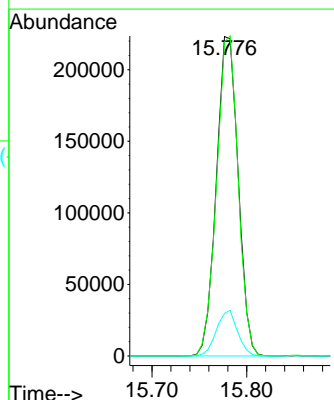


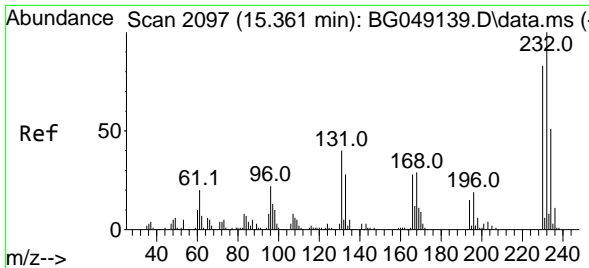
#58
 Fluorene
 Concen: 39.591 ng
 RT: 15.776 min Scan# 2168
 Delta R.T. 0.001 min
 Lab File: BG049217.D
 Acq: 8 Jul 2021 12:45



Tgt Ion:166 Resp: 356862

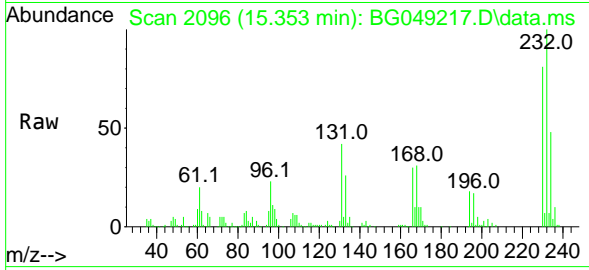
Ion	Ratio	Lower	Upper
166	100		
165	98.4	77.7	116.5
167	13.3	10.8	16.2



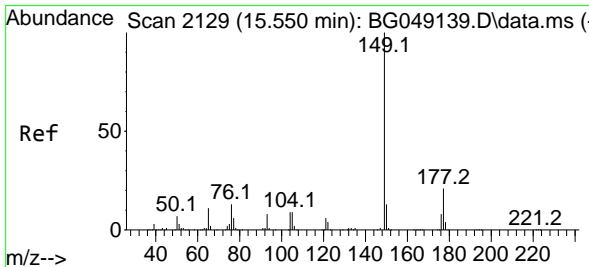
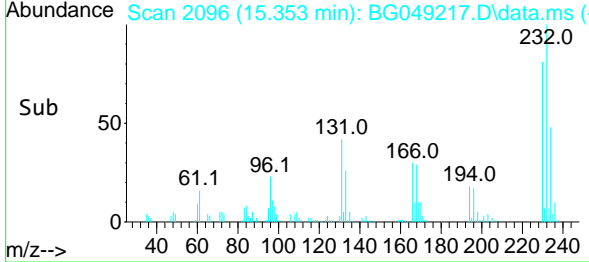
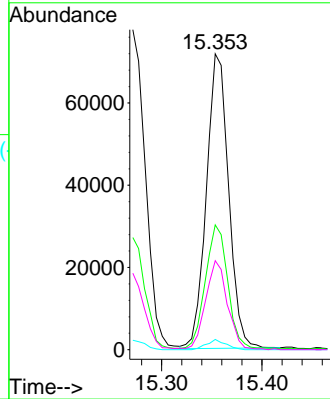


#59
 2,3,4,6-Tetrachlorophenol
 Concen: 40.589 ng
 RT: 15.353 min Scan# 2096
 Delta R.T. 0.001 min
 Lab File: BG049217.D
 Acq: 8 Jul 2021 12:45

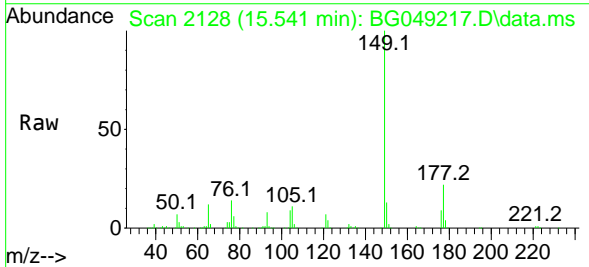
Instrument :
 BNA_G
 ClientSampled :
 PB137570BS



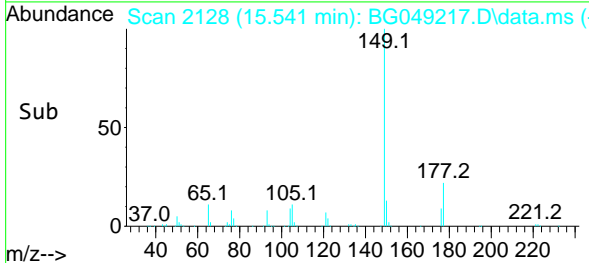
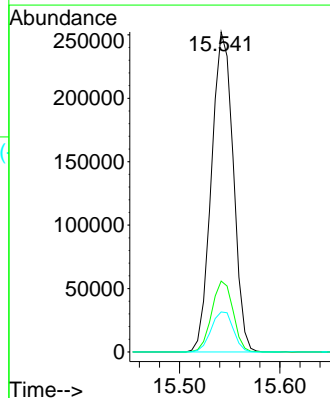
Tgt Ion:232 Resp: 110325
 Ion Ratio Lower Upper
 232 100
 131 42.9 37.2 55.8
 130 3.0 2.8 4.2
 166 30.0 24.0 36.0

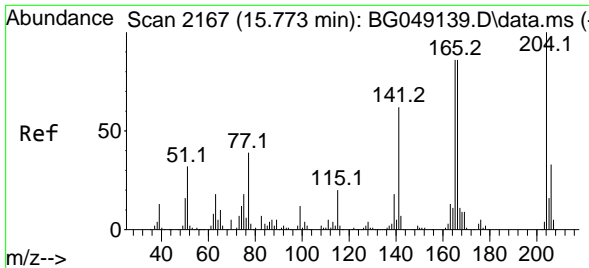


#60
 Diethylphthalate
 Concen: 40.345 ng
 RT: 15.541 min Scan# 2128
 Delta R.T. 0.001 min
 Lab File: BG049217.D
 Acq: 8 Jul 2021 12:45



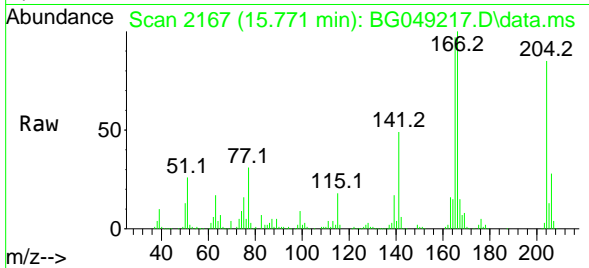
Tgt Ion:149 Resp: 380272
 Ion Ratio Lower Upper
 149 100
 177 22.1 19.0 28.6
 150 12.5 10.2 15.4



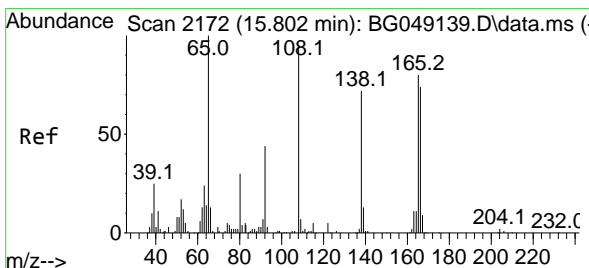
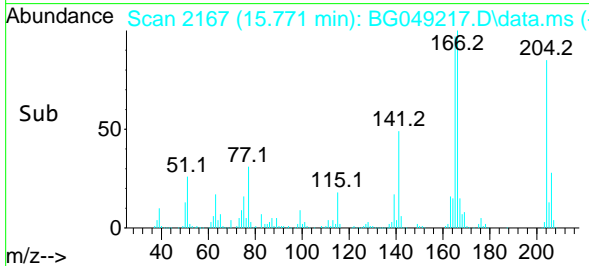
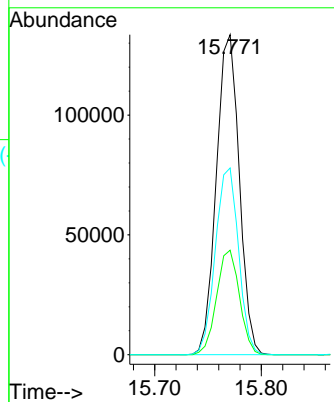


#61
 4-Chlorophenyl-phenylether
 Concen: 39.965 ng
 RT: 15.771 min Scan# 2167
 Delta R.T. 0.007 min
 Lab File: BG049217.D
 Acq: 8 Jul 2021 12:45

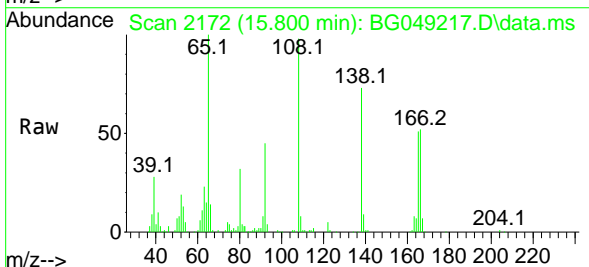
Instrument :
 BNA_G
 ClientSampled :
 PB137570BS



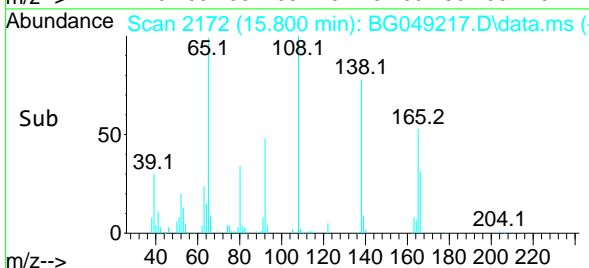
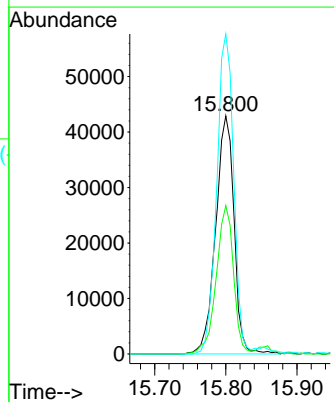
Tgt Ion:204 Resp: 199390
 Ion Ratio Lower Upper
 204 100
 206 32.7 24.6 37.0
 141 58.3 47.8 71.8

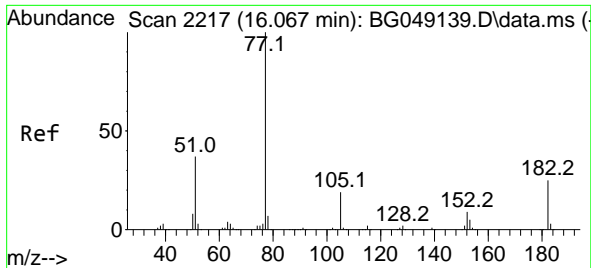


#62
 4-Nitroaniline
 Concen: 37.857 ng
 RT: 15.800 min Scan# 2172
 Delta R.T. 0.007 min
 Lab File: BG049217.D
 Acq: 8 Jul 2021 12:45



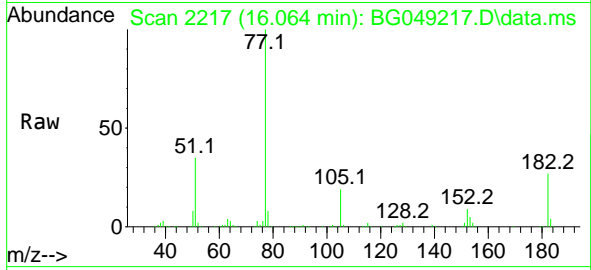
Tgt Ion:138 Resp: 77029
 Ion Ratio Lower Upper
 138 100
 92 62.3 32.3 72.3
 108 134.4 132.4 172.4





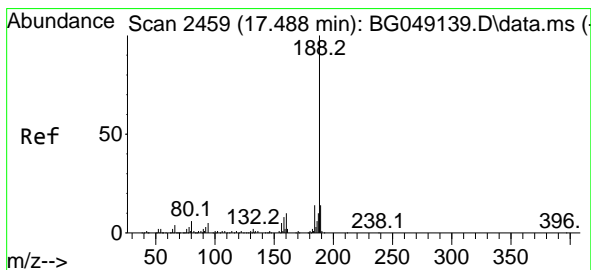
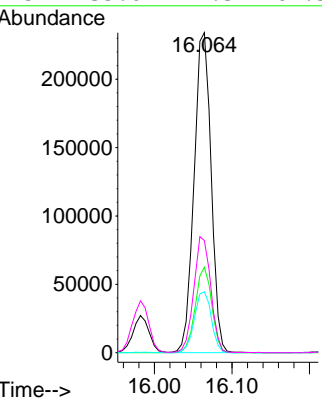
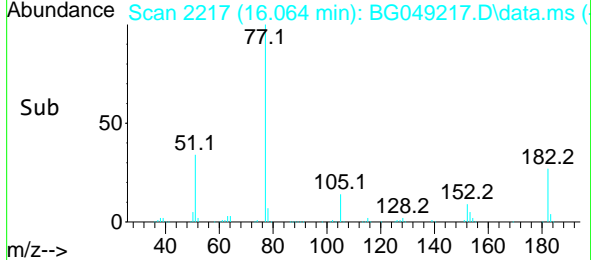
#63
 Azobenzene
 Concen: 37.591 ng
 RT: 16.064 min Scan# 2217
 Delta R.T. 0.007 min
 Lab File: BG049217.D
 Acq: 8 Jul 2021 12:45

Instrument :
 BNA_G
ClientSampled :
 PB137570BS

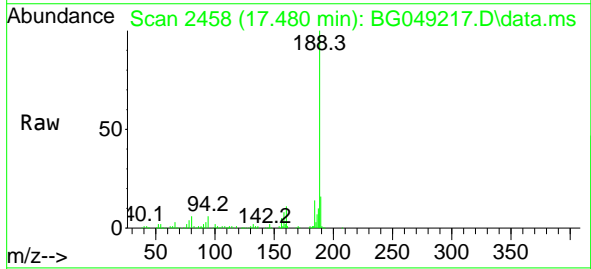


Tgt Ion: 77 Resp: 357199

Ion	Ratio	Lower	Upper
77	100		
182	26.7	7.9	47.9
105	19.1	0.0	37.9
51	35.0	27.3	67.3

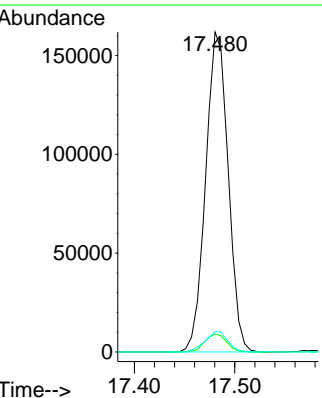
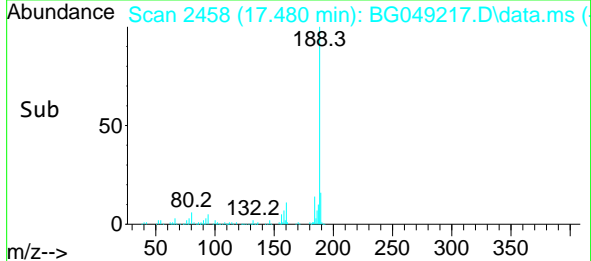


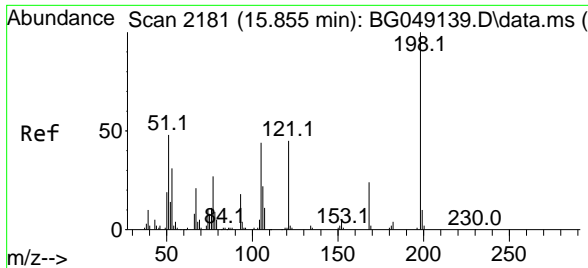
#64
 Phenanthrene-d10
 Concen: 20.000 ng
 RT: 17.480 min Scan# 2458
 Delta R.T. 0.001 min
 Lab File: BG049217.D
 Acq: 8 Jul 2021 12:45



Tgt Ion: 188 Resp: 251679

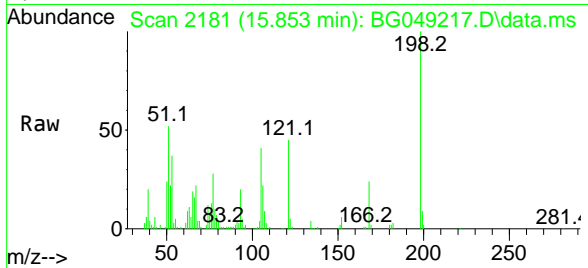
Ion	Ratio	Lower	Upper
188	100		
94	5.6	5.4	8.0
80	6.3	3.7	5.5



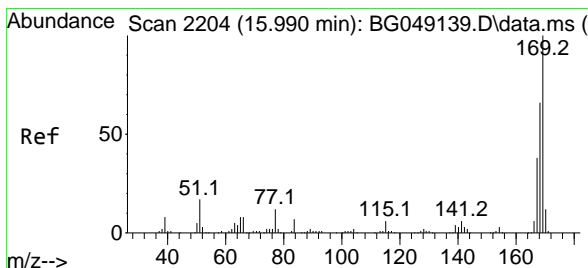
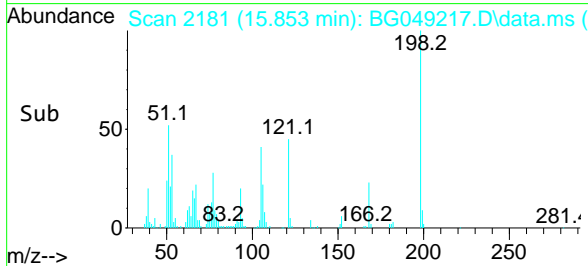
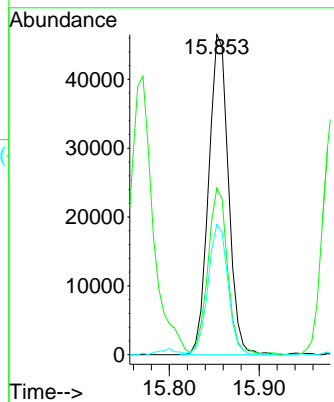


#65
 4,6-Dinitro-2-methylphenol
 Concen: 39.499 ng
 RT: 15.853 min Scan# 2181
 Delta R.T. 0.001 min
 Lab File: BG049217.D
 Acq: 8 Jul 2021 12:45

Instrument :
 BNA_G
ClientSampled :
 PB137570BS

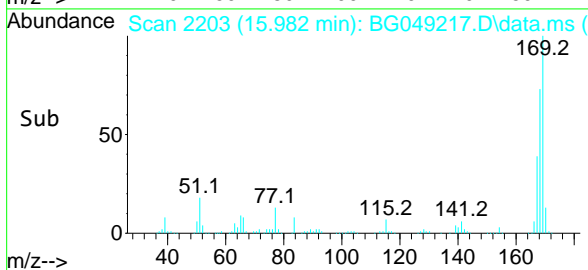
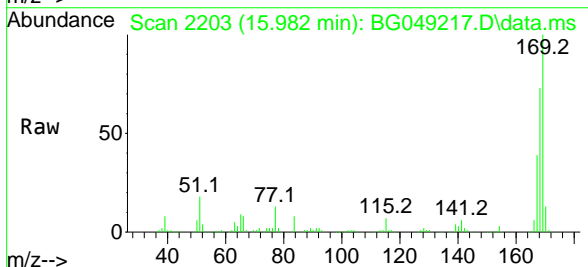
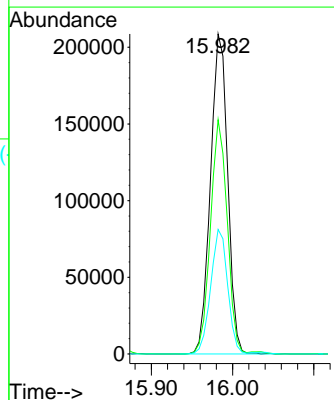


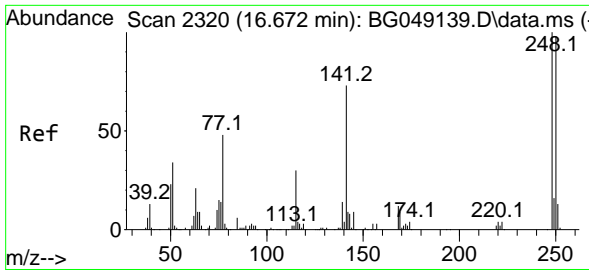
Tgt Ion:198 Resp: 71011
 Ion Ratio Lower Upper
 198 100
 51 52.1 29.4 69.4
 105 40.8 15.1 55.1



#66
 n-Nitrosodiphenylamine
 Concen: 38.904 ng
 RT: 15.982 min Scan# 2203
 Delta R.T. 0.001 min
 Lab File: BG049217.D
 Acq: 8 Jul 2021 12:45

Tgt Ion:169 Resp: 306223
 Ion Ratio Lower Upper
 169 100
 168 73.2 56.3 84.5
 167 38.9 28.4 42.6

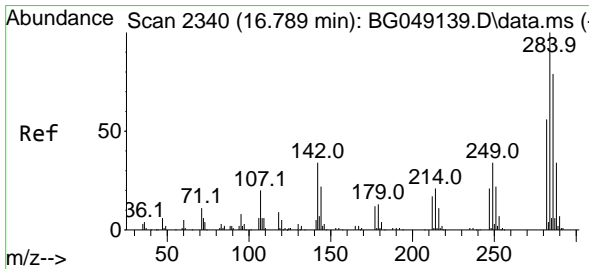
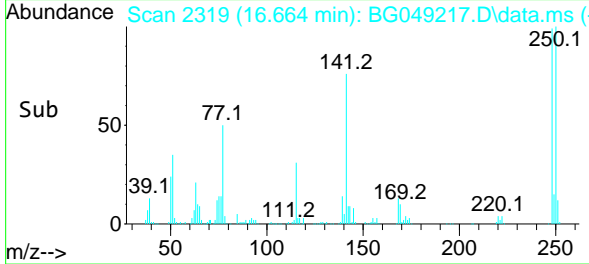
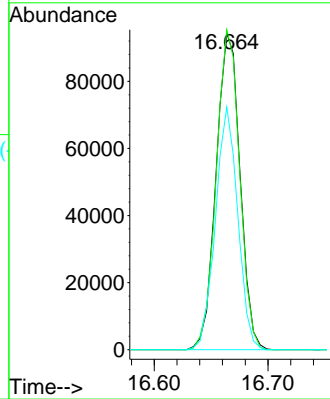
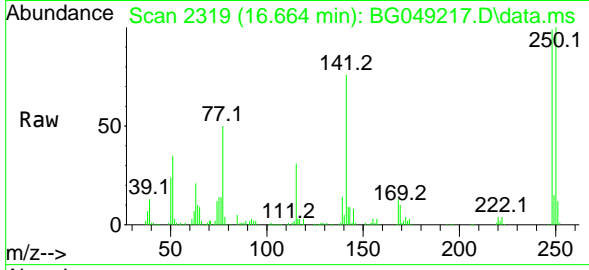




#67
 4-Bromophenyl-phenylether
 Concen: 40.530 ng
 RT: 16.664 min Scan# 2319
 Delta R.T. 0.001 min
 Lab File: BG049217.D
 Acq: 8 Jul 2021 12:45

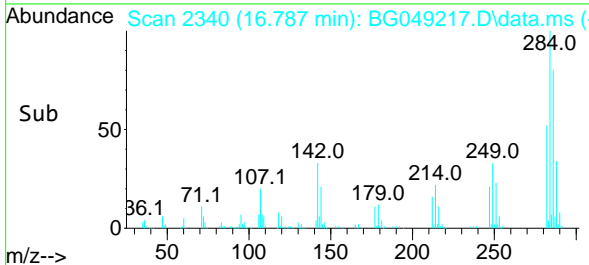
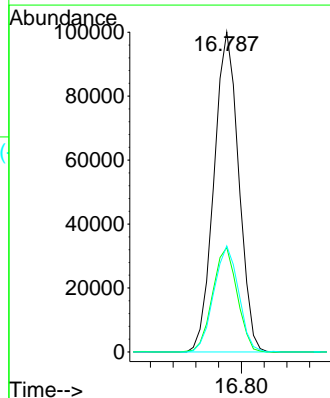
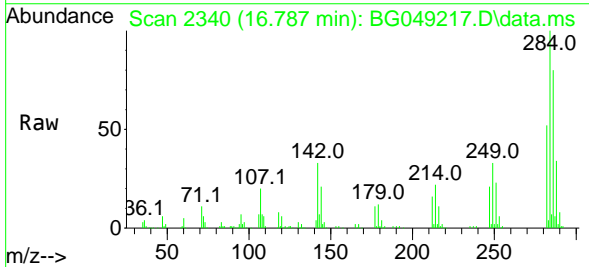
Instrument :
 BNA_G
 ClientSampled :
 PB137570BS

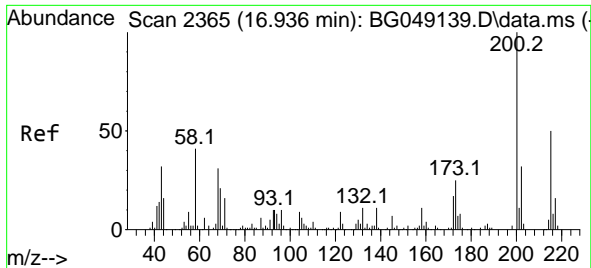
Tgt Ion:248 Resp: 137614
 Ion Ratio Lower Upper
 248 100
 250 101.0 76.1 114.1
 141 76.5 65.4 98.2



#68
 Hexachlorobenzene
 Concen: 40.207 ng
 RT: 16.787 min Scan# 2340
 Delta R.T. 0.001 min
 Lab File: BG049217.D
 Acq: 8 Jul 2021 12:45

Tgt Ion:284 Resp: 150923
 Ion Ratio Lower Upper
 284 100
 142 32.6 27.0 40.6
 249 33.2 28.2 42.2

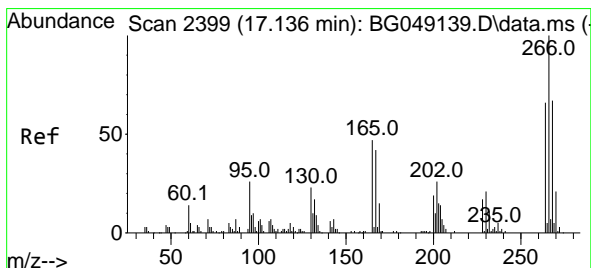
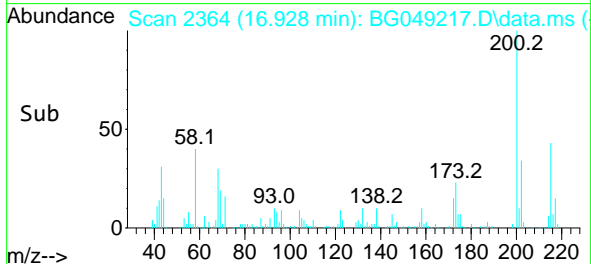
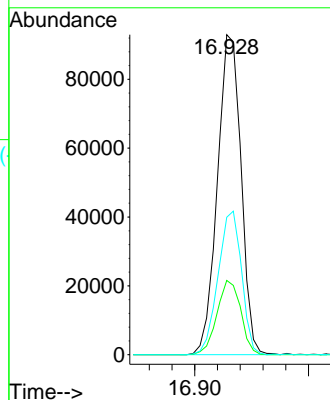
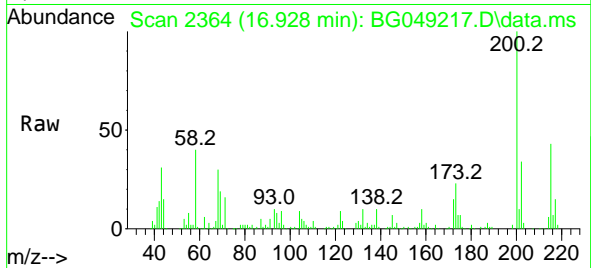




#69
 Atrazine
 Concen: 51.401 ng
 RT: 16.928 min Scan# 2364
 Delta R.T. 0.001 min
 Lab File: BG049217.D
 Acq: 8 Jul 2021 12:45

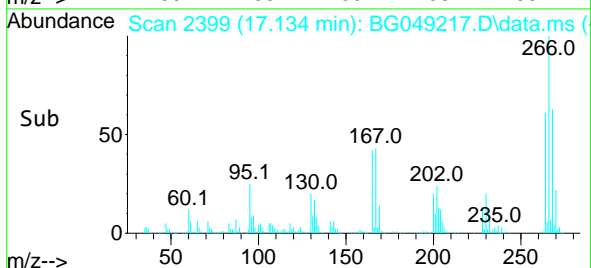
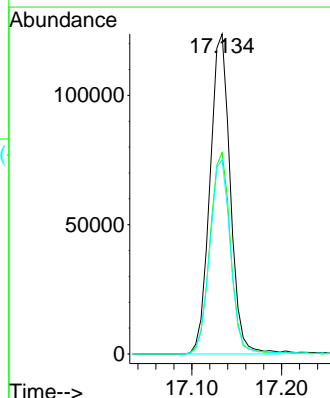
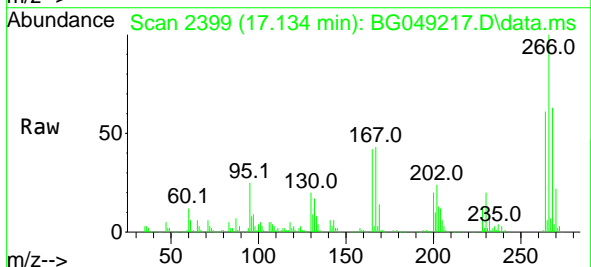
Instrument :
 BNA_G
 ClientSampled :
 PB137570BS

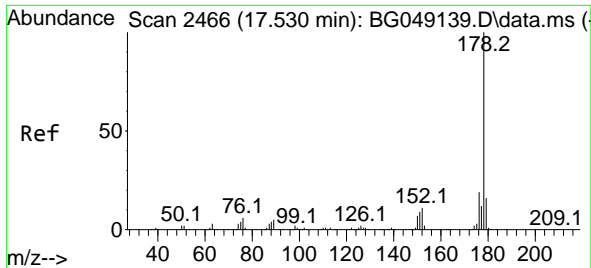
Tgt Ion:200 Resp: 134364
 Ion Ratio Lower Upper
 200 100
 173 23.2 3.7 43.7
 215 43.0 26.9 66.9



#70
 Pentachlorophenol
 Concen: 88.719 ng
 RT: 17.134 min Scan# 2399
 Delta R.T. 0.007 min
 Lab File: BG049217.D
 Acq: 8 Jul 2021 12:45

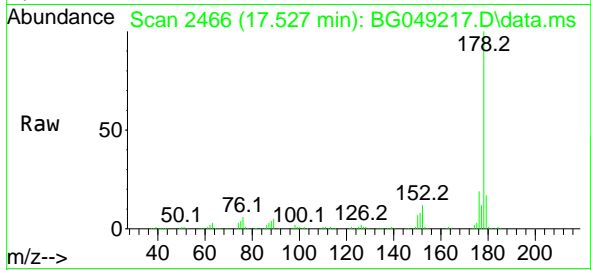
Tgt Ion:266 Resp: 193846
 Ion Ratio Lower Upper
 266 100
 268 63.0 49.0 73.4
 264 60.6 49.0 73.6



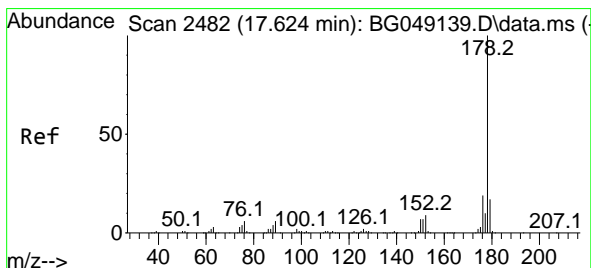
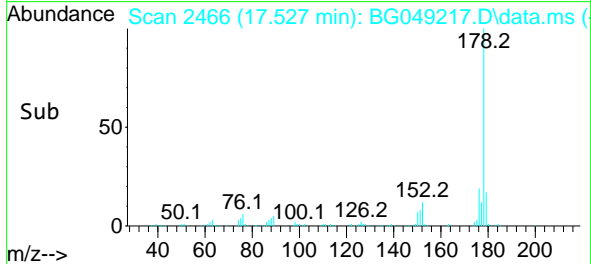
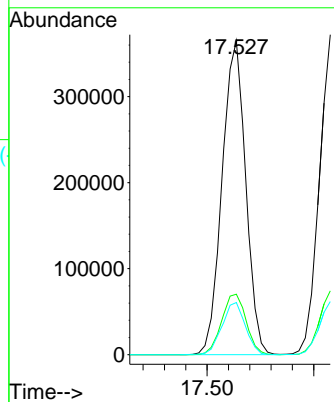


#71
 Phenanthrene
 Concen: 38.734 ng
 RT: 17.527 min Scan# 2466
 Delta R.T. 0.007 min
 Lab File: BG049217.D
 Acq: 8 Jul 2021 12:45

Instrument :
 BNA_G
 ClientSampled :
 PB137570BS

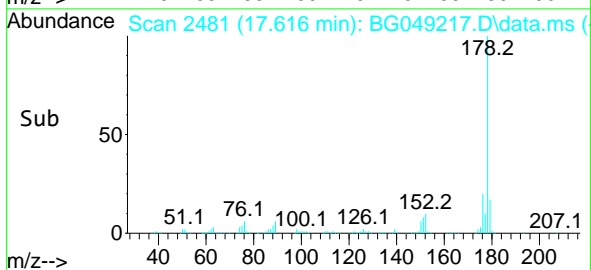
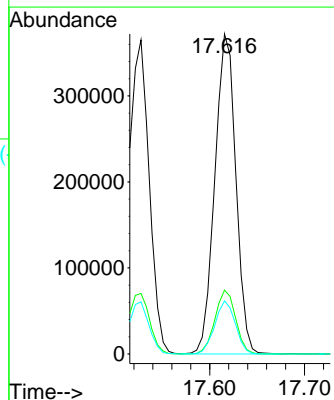
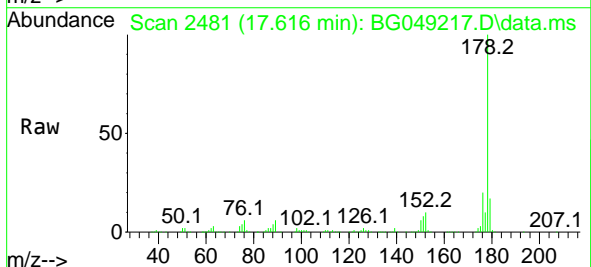


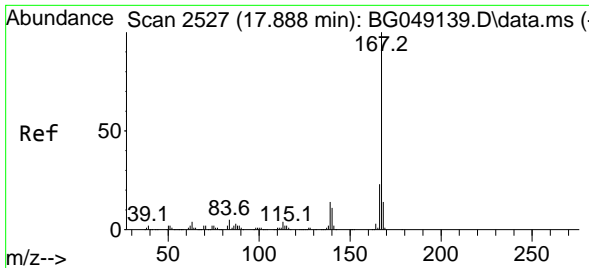
Tgt Ion:178 Resp: 561363
 Ion Ratio Lower Upper
 178 100
 176 19.3 16.0 24.0
 179 16.6 14.2 21.4



#72
 Anthracene
 Concen: 39.699 ng
 RT: 17.616 min Scan# 2481
 Delta R.T. 0.007 min
 Lab File: BG049217.D
 Acq: 8 Jul 2021 12:45

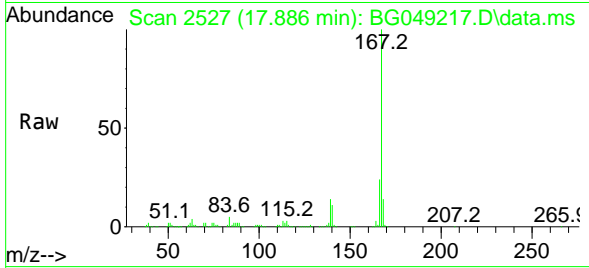
Tgt Ion:178 Resp: 573553
 Ion Ratio Lower Upper
 178 100
 176 20.0 14.6 21.8
 179 16.6 13.4 20.0



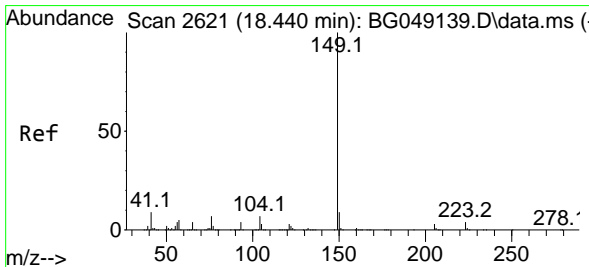
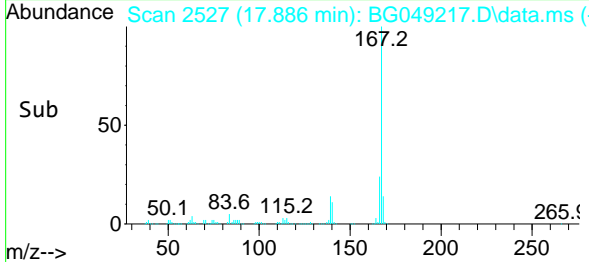
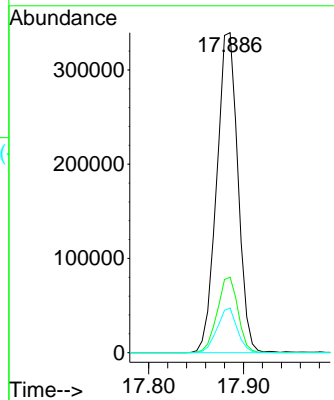


#73
 Carbazole
 Concen: 38.334 ng
 RT: 17.886 min Scan# 2527
 Delta R.T. 0.007 min
 Lab File: BG049217.D
 Acq: 8 Jul 2021 12:45

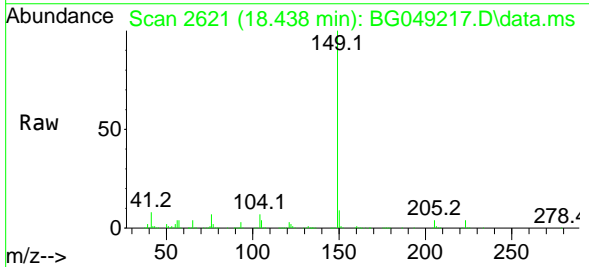
Instrument :
 BNA_G
 ClientSampled :
 PB137570BS



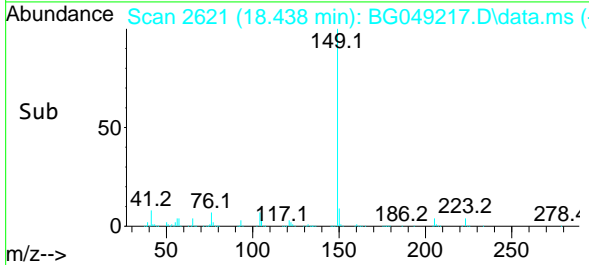
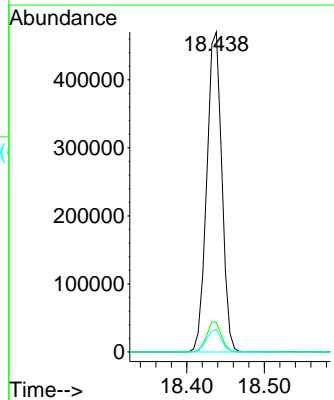
Tgt Ion:167 Resp: 528032
 Ion Ratio Lower Upper
 167 100
 166 23.6 17.4 26.2
 139 13.9 10.7 16.1

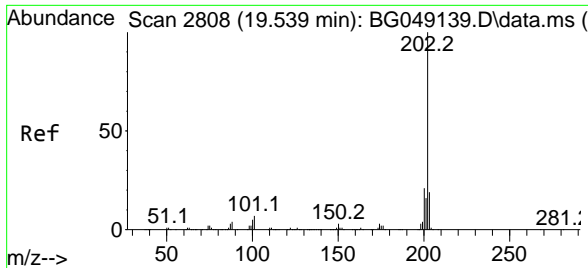


#74
 Di-n-butylphthalate
 Concen: 40.149 ng
 RT: 18.438 min Scan# 2621
 Delta R.T. 0.007 min
 Lab File: BG049217.D
 Acq: 8 Jul 2021 12:45



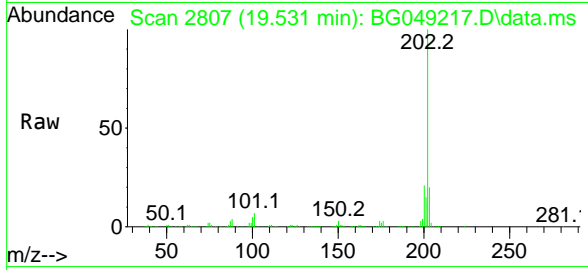
Tgt Ion:149 Resp: 635854
 Ion Ratio Lower Upper
 149 100
 150 9.2 7.5 11.3
 104 7.1 6.6 10.0





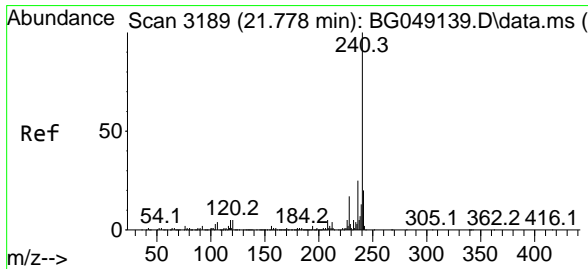
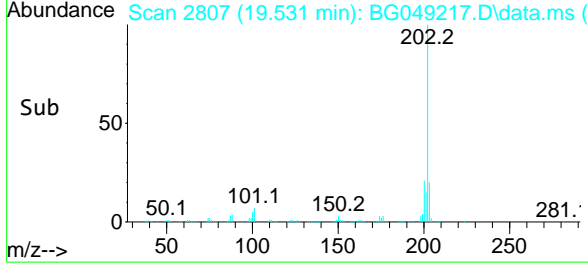
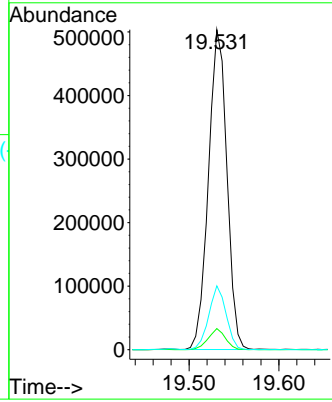
#75
 Fluoranthene
 Concen: 39.560 ng
 RT: 19.531 min Scan# 2807
 Delta R.T. 0.001 min
 Lab File: BG049217.D
 Acq: 8 Jul 2021 12:45

Instrument :
 BNA_G
ClientSampled :
 PB137570BS

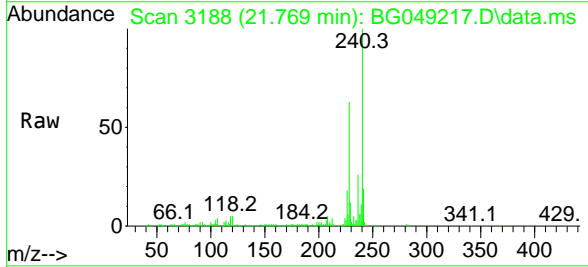


Tgt Ion: 202 Resp: 717753

Ion	Ratio	Lower	Upper
202	100		
101	6.6	0.0	24.7
203	20.0	0.0	38.5

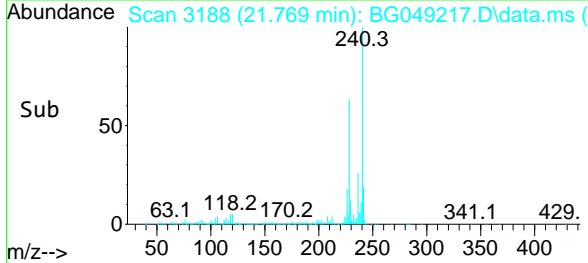
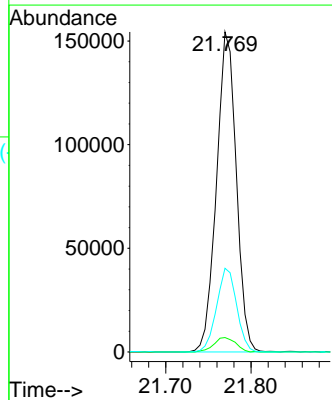


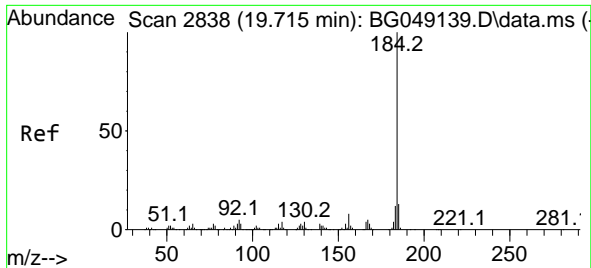
#76
 Chrysene-d12
 Concen: 20.000 ng
 RT: 21.769 min Scan# 3188
 Delta R.T. 0.007 min
 Lab File: BG049217.D
 Acq: 8 Jul 2021 12:45



Tgt Ion: 240 Resp: 249111

Ion	Ratio	Lower	Upper
240	100		
120	4.5	4.2	6.2
236	26.2	21.8	32.6

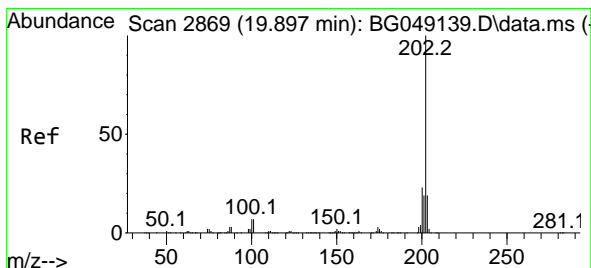
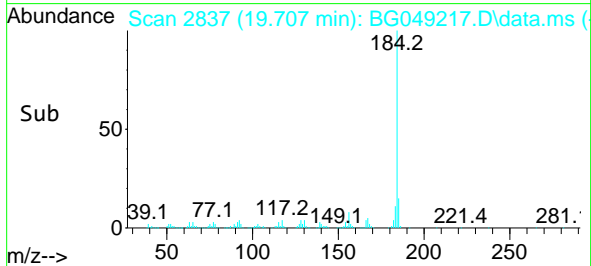
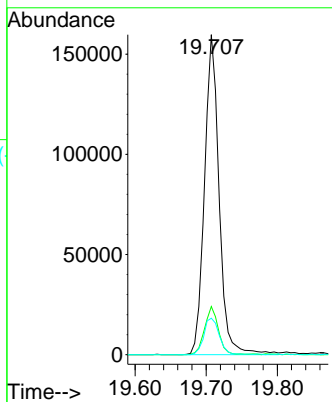
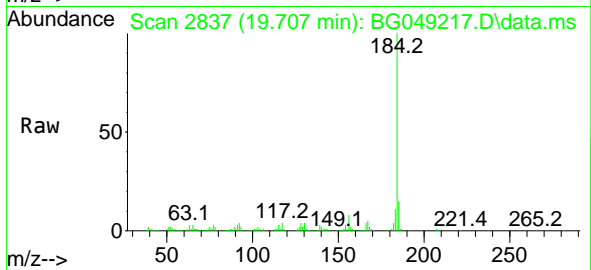




#77
Benzidine
Concen: 42.738 ng
RT: 19.707 min Scan# 2837
Delta R.T. 0.001 min
Lab File: BG049217.D
Acq: 8 Jul 2021 12:45

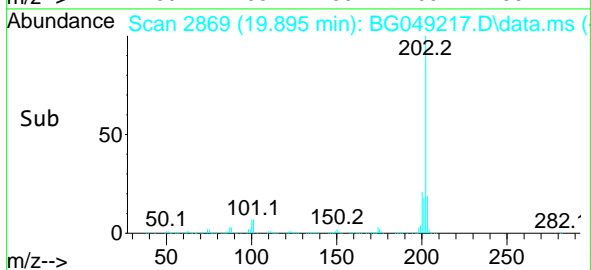
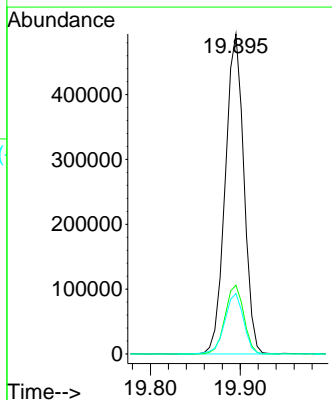
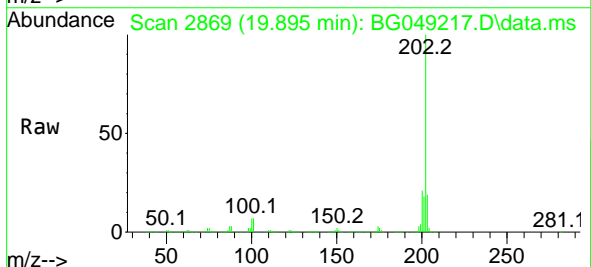
Instrument :
BNA_G
ClientSampled :
PB137570BS

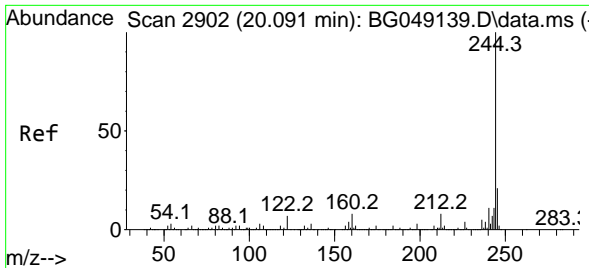
Tgt Ion:184 Resp: 228683
Ion Ratio Lower Upper
184 100
185 15.0 10.7 16.1
183 11.4 9.4 14.0



#78
Pyrene
Concen: 38.297 ng
RT: 19.895 min Scan# 2869
Delta R.T. 0.007 min
Lab File: BG049217.D
Acq: 8 Jul 2021 12:45

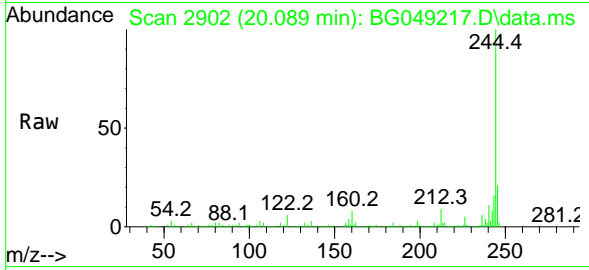
Tgt Ion:202 Resp: 708593
Ion Ratio Lower Upper
202 100
200 21.5 15.8 23.8
203 18.9 14.6 21.8



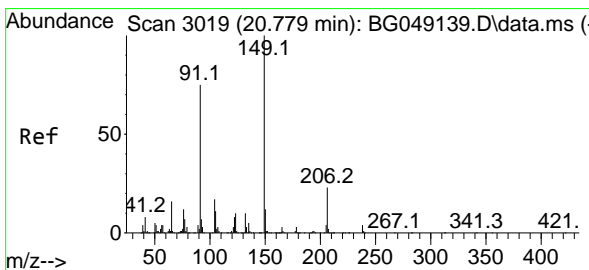
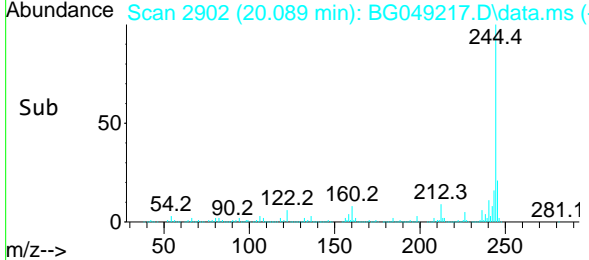
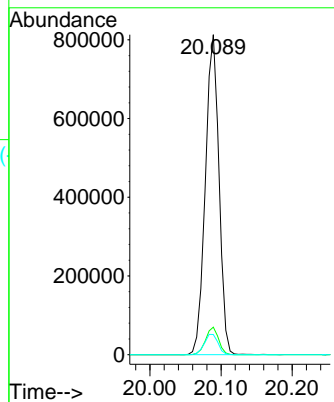


#79
 Terphenyl-d14
 Concen: 73.744 ng
 RT: 20.089 min Scan# 2902
 Delta R.T. 0.007 min
 Lab File: BG049217.D
 Acq: 8 Jul 2021 12:45

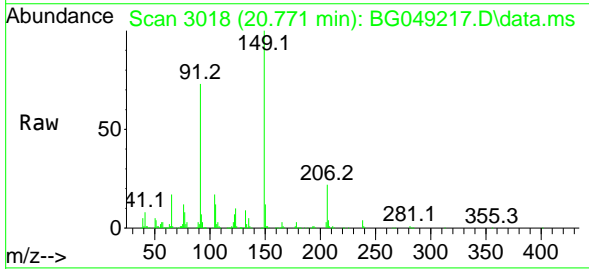
Instrument :
 BNA_G
ClientSampled :
 PB137570BS



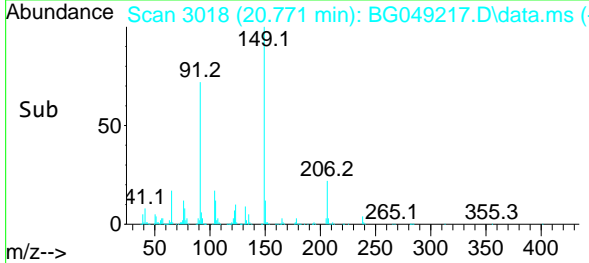
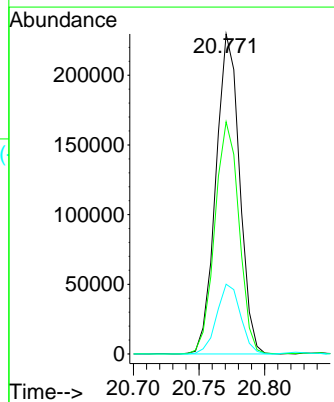
Tgt Ion:244 Resp: 1084110
 Ion Ratio Lower Upper
 244 100
 212 8.6 6.9 10.3
 122 6.3 5.0 7.6

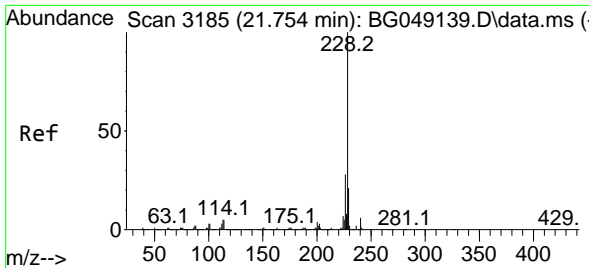


#80
 Butylbenzylphthalate
 Concen: 41.121 ng
 RT: 20.771 min Scan# 3018
 Delta R.T. 0.001 min
 Lab File: BG049217.D
 Acq: 8 Jul 2021 12:45



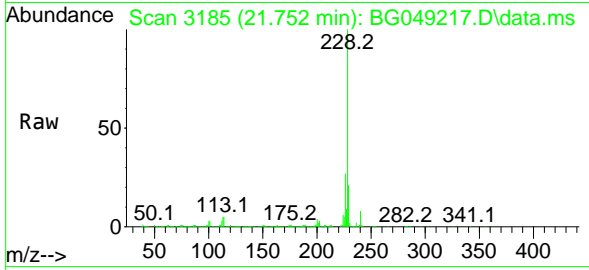
Tgt Ion:149 Resp: 288253
 Ion Ratio Lower Upper
 149 100
 91 72.5 63.4 95.2
 206 21.8 18.4 27.6



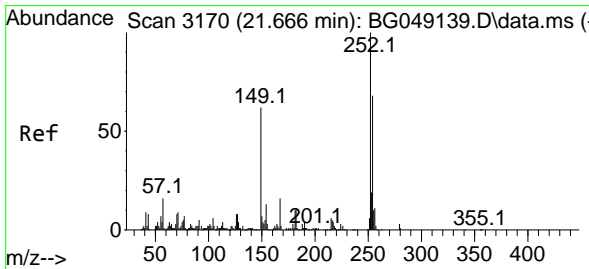
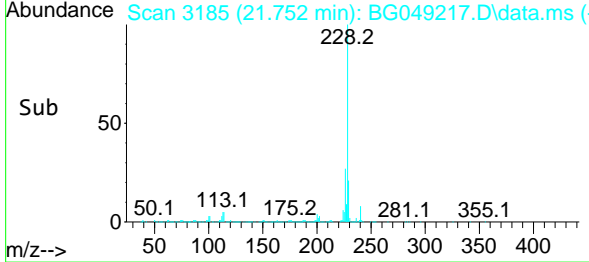
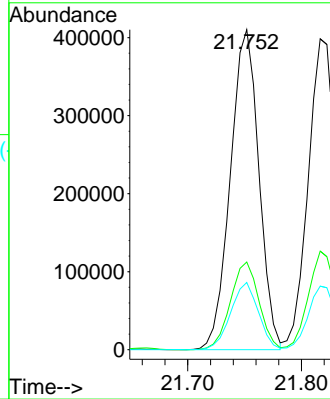


#81
 Benzo(a)anthracene
 Concen: 38.479 ng
 RT: 21.752 min Scan# 3185
 Delta R.T. 0.007 min
 Lab File: BG049217.D
 Acq: 8 Jul 2021 12:45

Instrument :
 BNA_G
 ClientSampled :
 PB137570BS

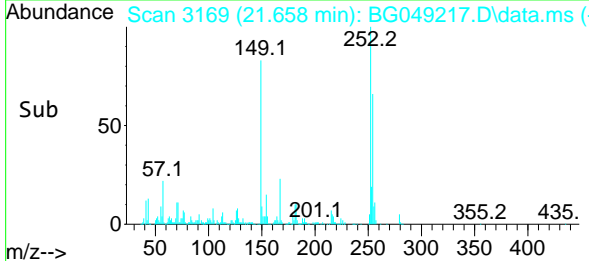
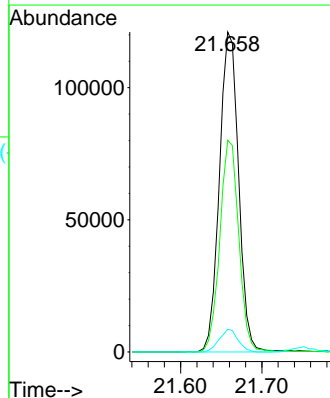
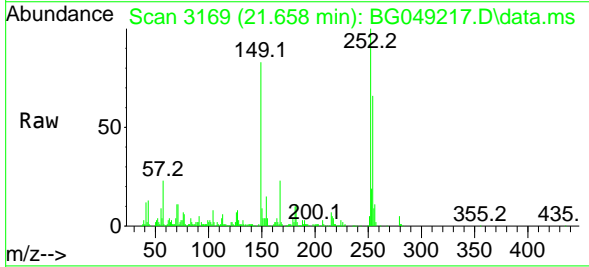


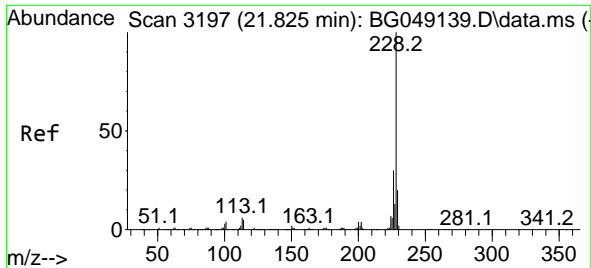
Tgt Ion:228 Resp: 714957
 Ion Ratio Lower Upper
 228 100
 226 27.4 22.7 34.1
 229 21.0 16.0 24.0



#82
 3,3'-Dichlorobenzidine
 Concen: 31.402 ng
 RT: 21.658 min Scan# 3169
 Delta R.T. 0.001 min
 Lab File: BG049217.D
 Acq: 8 Jul 2021 12:45

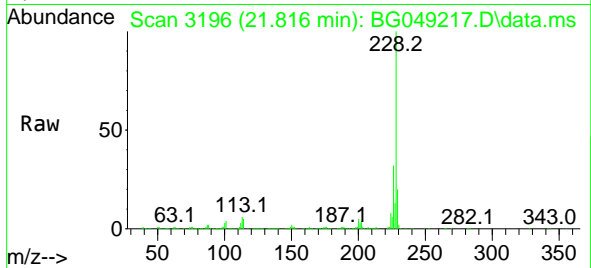
Tgt Ion:252 Resp: 198488
 Ion Ratio Lower Upper
 252 100
 254 66.1 52.4 78.6
 126 7.1 5.9 8.9



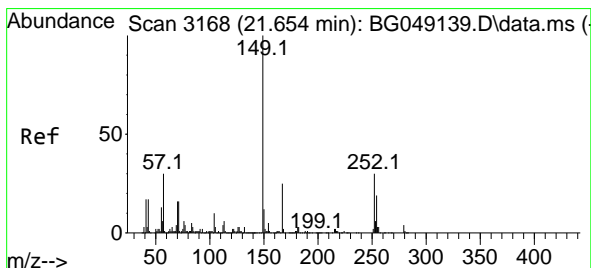
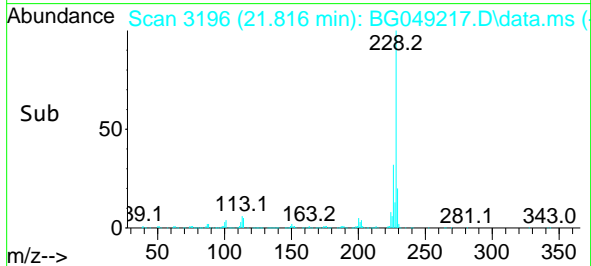
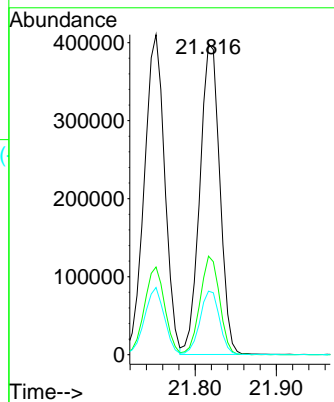


#83
 Chrysene
 Concen: 38.458 ng
 RT: 21.816 min Scan# 3196
 Delta R.T. 0.007 min
 Lab File: BG049217.D
 Acq: 8 Jul 2021 12:45

Instrument :
 BNA_G
 ClientSampled :
 PB137570BS

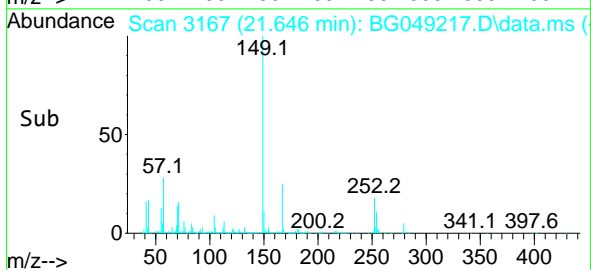
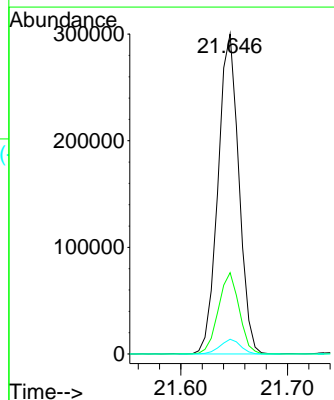
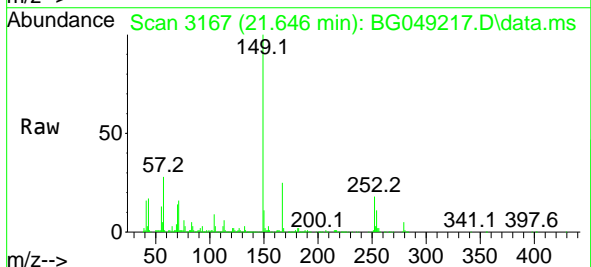


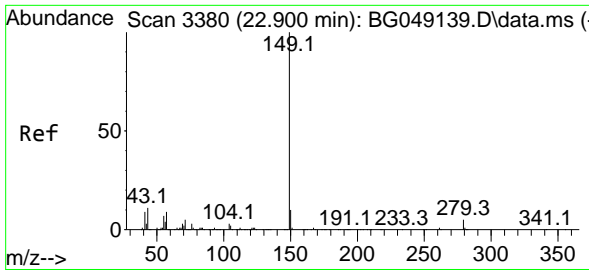
Tgt Ion:228 Resp: 678855
 Ion Ratio Lower Upper
 228 100
 226 31.7 23.1 34.7
 229 20.4 15.3 22.9



#84
 Bis(2-ethylhexyl)phthalate
 Concen: 40.996 ng
 RT: 21.646 min Scan# 3167
 Delta R.T. 0.001 min
 Lab File: BG049217.D
 Acq: 8 Jul 2021 12:45

Tgt Ion:149 Resp: 405898
 Ion Ratio Lower Upper
 149 100
 167 25.4 22.3 33.5
 279 4.6 3.8 5.8



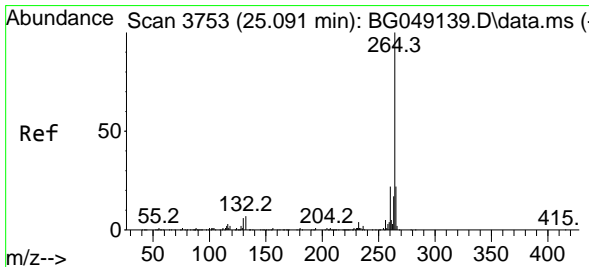
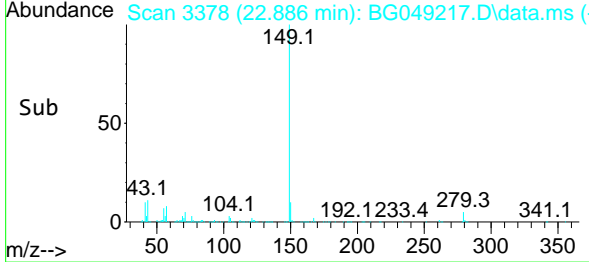
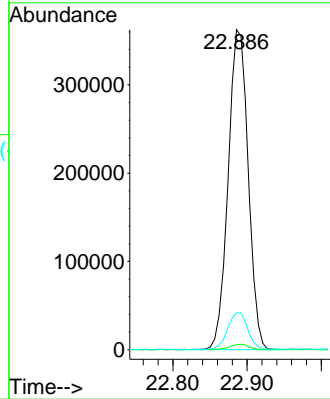
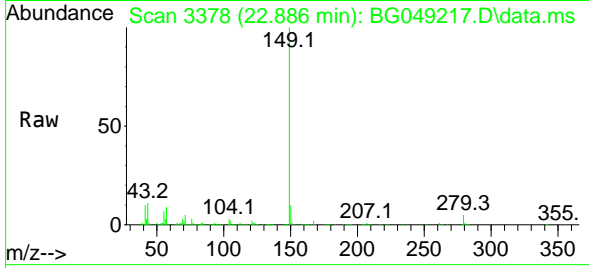


#85
 Di-n-octyl phthalate
 Concen: 40.729 ng
 RT: 22.886 min Scan# 3378
 Delta R.T. 0.001 min
 Lab File: BG049217.D
 Acq: 8 Jul 2021 12:45

Instrument :
 BNA_G
 ClientSampled :
 PB137570BS

Tgt Ion:149 Resp: 678700

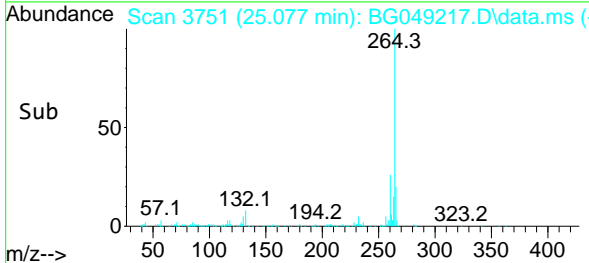
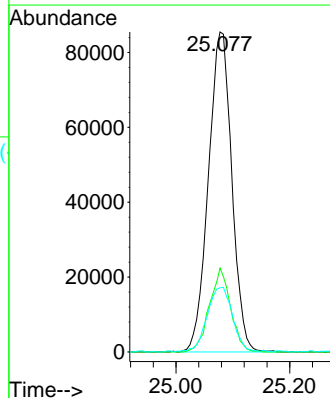
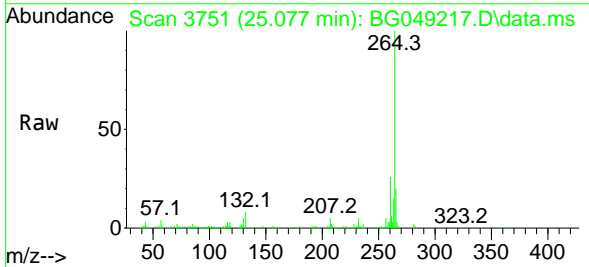
Ion	Ratio	Lower	Upper
149	100		
167	1.7	1.4	2.2
43	11.6	8.6	12.8

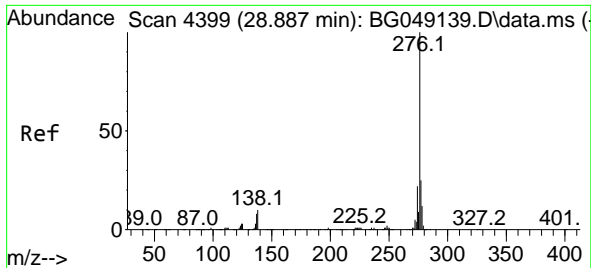


#86
 Perylene-d12
 Concen: 20.000 ng
 RT: 25.077 min Scan# 3751
 Delta R.T. 0.013 min
 Lab File: BG049217.D
 Acq: 8 Jul 2021 12:45

Tgt Ion:264 Resp: 244226

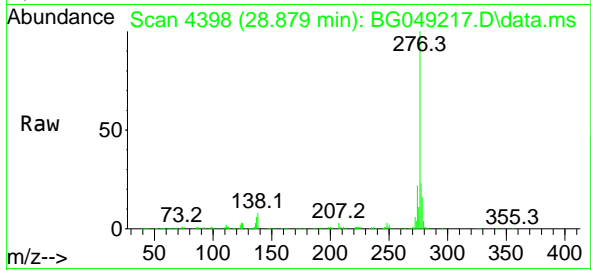
Ion	Ratio	Lower	Upper
264	100		
260	26.2	19.4	29.2
265	20.1	16.9	25.3



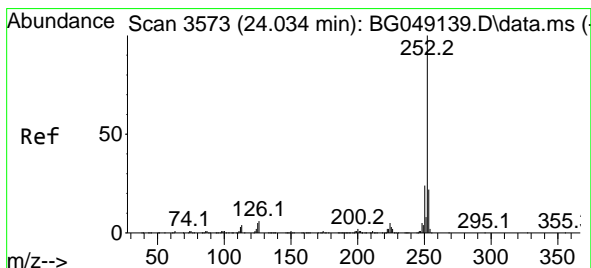
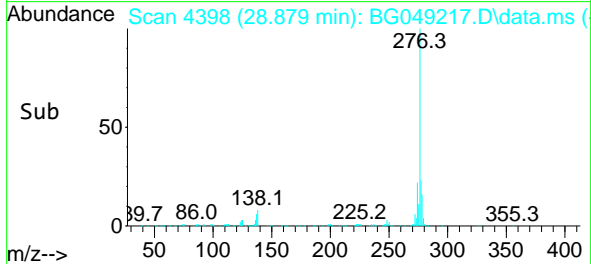
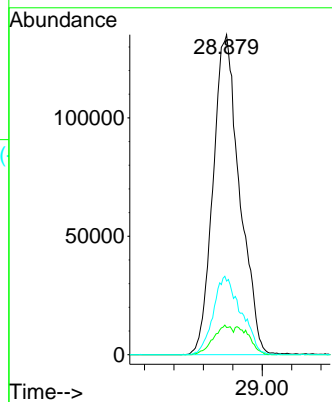


#87
 Indeno(1,2,3-cd)pyrene
 Concen: 43.481 ng
 RT: 28.879 min Scan# 4398
 Delta R.T. 0.018 min
 Lab File: BG049217.D
 Acq: 8 Jul 2021 12:45

Instrument :
 BNA_G
 ClientSampled :
 PB137570BS

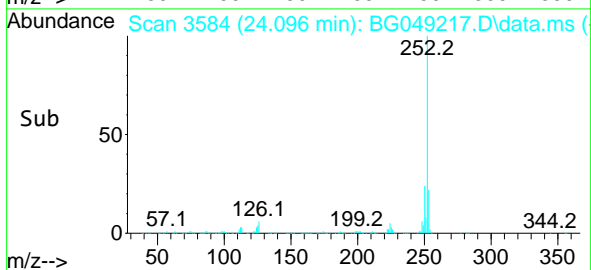
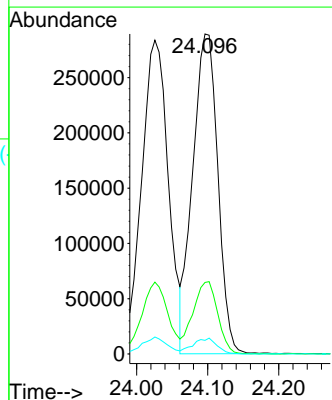
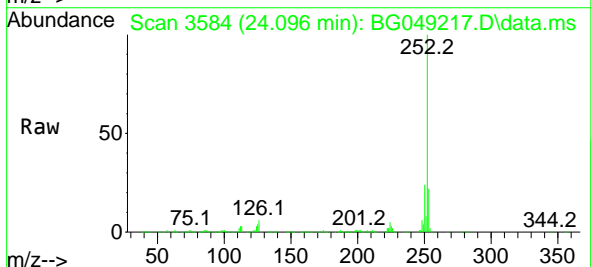


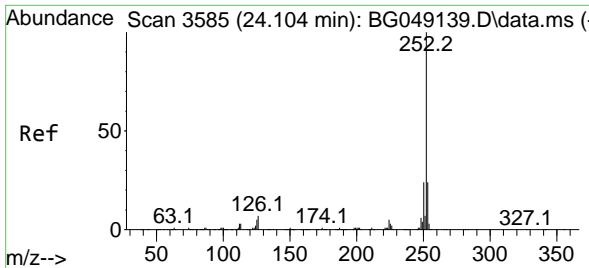
Tgt Ion:276 Resp: 847343
 Ion Ratio Lower Upper
 276 100
 138 6.6 5.1 7.7
 277 25.6 19.8 29.6



#88
 Benzo(b)fluoranthene
 Concen: 40.331 ng
 RT: 24.096 min Scan# 3584
 Delta R.T. 0.077 min
 Lab File: BG049217.D
 Acq: 8 Jul 2021 12:45

Tgt Ion:252 Resp: 710805
 Ion Ratio Lower Upper
 252 100
 253 22.4 16.2 24.4
 125 4.3 3.0 4.4

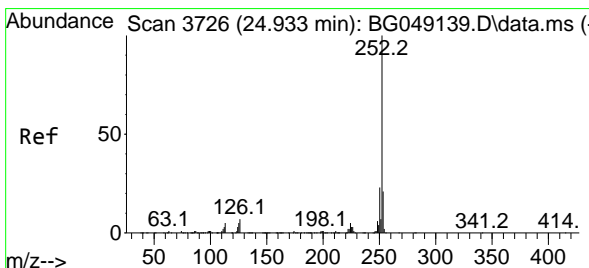
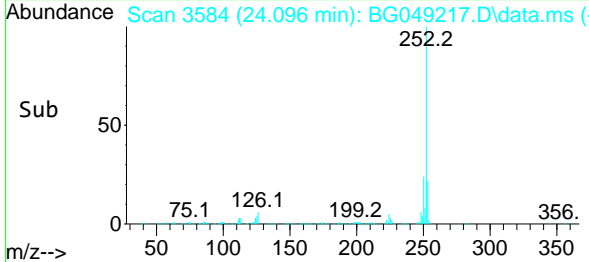
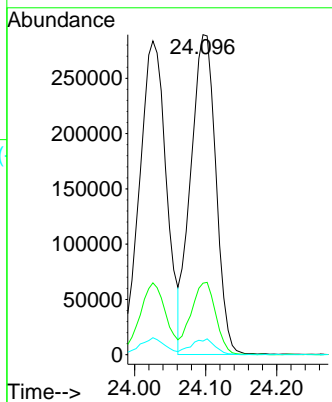
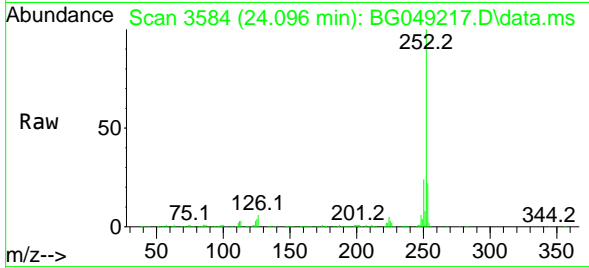




#89
 Benzo(k)fluoranthene
 Concen: 42.276 ng
 RT: 24.096 min Scan# 3584
 Delta R.T. 0.007 min
 Lab File: BG049217.D
 Acq: 8 Jul 2021 12:45

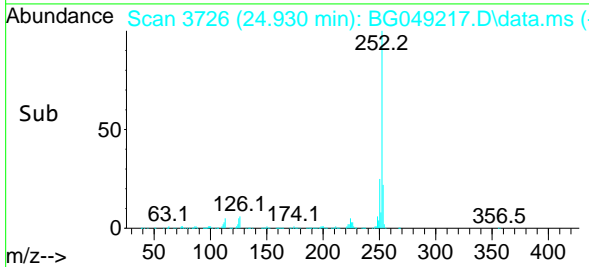
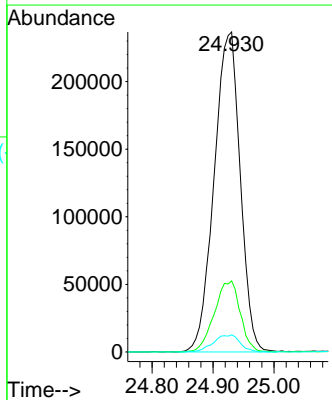
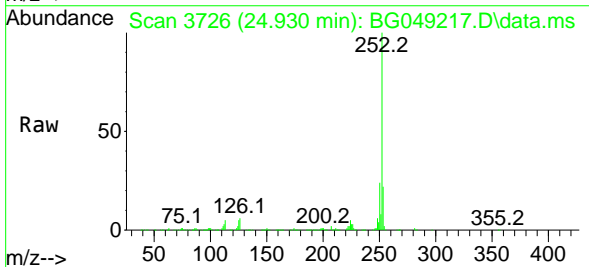
Instrument :
 BNA_G
 ClientSampled :
 PB137570BS

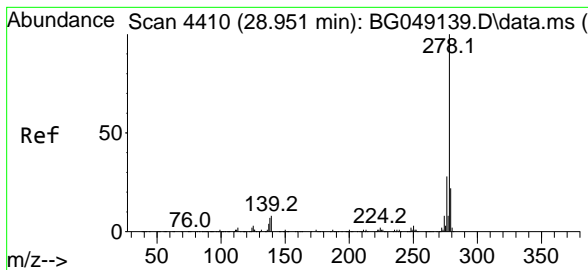
Tgt Ion	Resp	Lower	Upper
252	100		
253	22.4	18.0	27.0
125	4.3	3.1	4.7



#90
 Benzo(a)pyrene
 Concen: 43.256 ng
 RT: 24.930 min Scan# 3726
 Delta R.T. 0.018 min
 Lab File: BG049217.D
 Acq: 8 Jul 2021 12:45

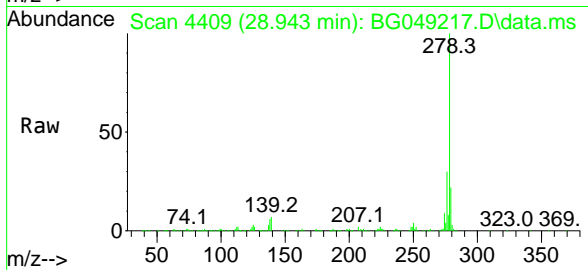
Tgt Ion	Resp	Lower	Upper
252	100		
253	22.2	16.6	25.0
125	5.4	3.5	5.3



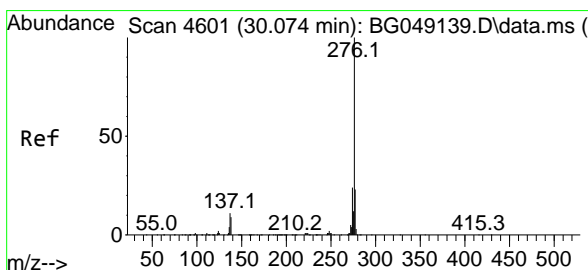
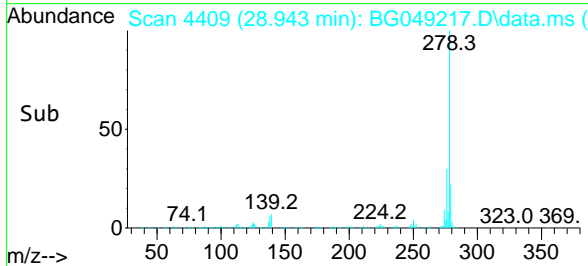
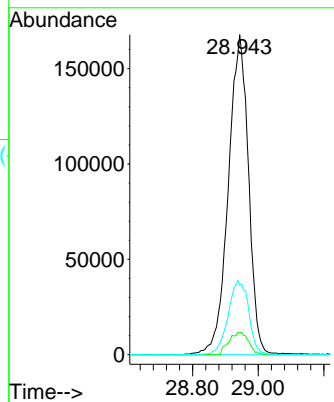


#91
 Dibenzo(a,h)anthracene
 Concen: 43.540 ng
 RT: 28.943 min Scan# 4409
 Delta R.T. 0.018 min
 Lab File: BG049217.D
 Acq: 8 Jul 2021 12:45

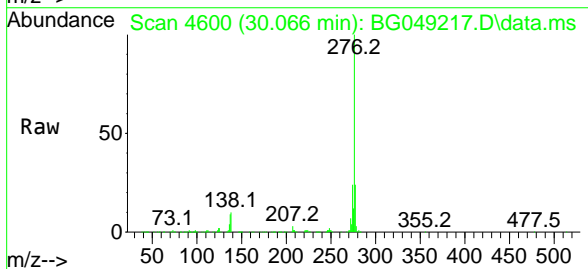
Instrument :
 BNA_G
 ClientSampled :
 PB137570BS



Tgt Ion:278 Resp: 716177
 Ion Ratio Lower Upper
 278 100
 139 6.9 4.6 6.8#
 279 21.7 17.9 26.9



#92
 Benzo(g,h,i)perylene
 Concen: 43.578 ng
 RT: 30.066 min Scan# 4600
 Delta R.T. 0.030 min
 Lab File: BG049217.D
 Acq: 8 Jul 2021 12:45



Tgt Ion:276 Resp: 706584
 Ion Ratio Lower Upper
 276 100
 277 23.5 18.4 27.6
 138 9.6 7.0 10.6

