

Data Path : Z:\HPCHEM1\BNA_G\DATA\BG071016\
 Data File : BG022978.D
 Acq On : 9 Jul 2016 23:29
 Operator : UM/SJ
 Sample : H3935-14
 Misc :
 ALS Vial : 14 Sample Multiplier: 1

Instrument :
 BNA_G
 ClientSampleId :
 C3-5

Quant Time: Jul 11 02:30:57 2016
 Quant Method : Z:\HPCHEM1\BNA_G\METHODS\8270-BG070816.M
 Quant Title : ASP BNA STANDARDS FOR 5 POINT CALIBRATION
 QLast Update : Thu Jul 07 16:51:07 2016
 Response via : Initial Calibration

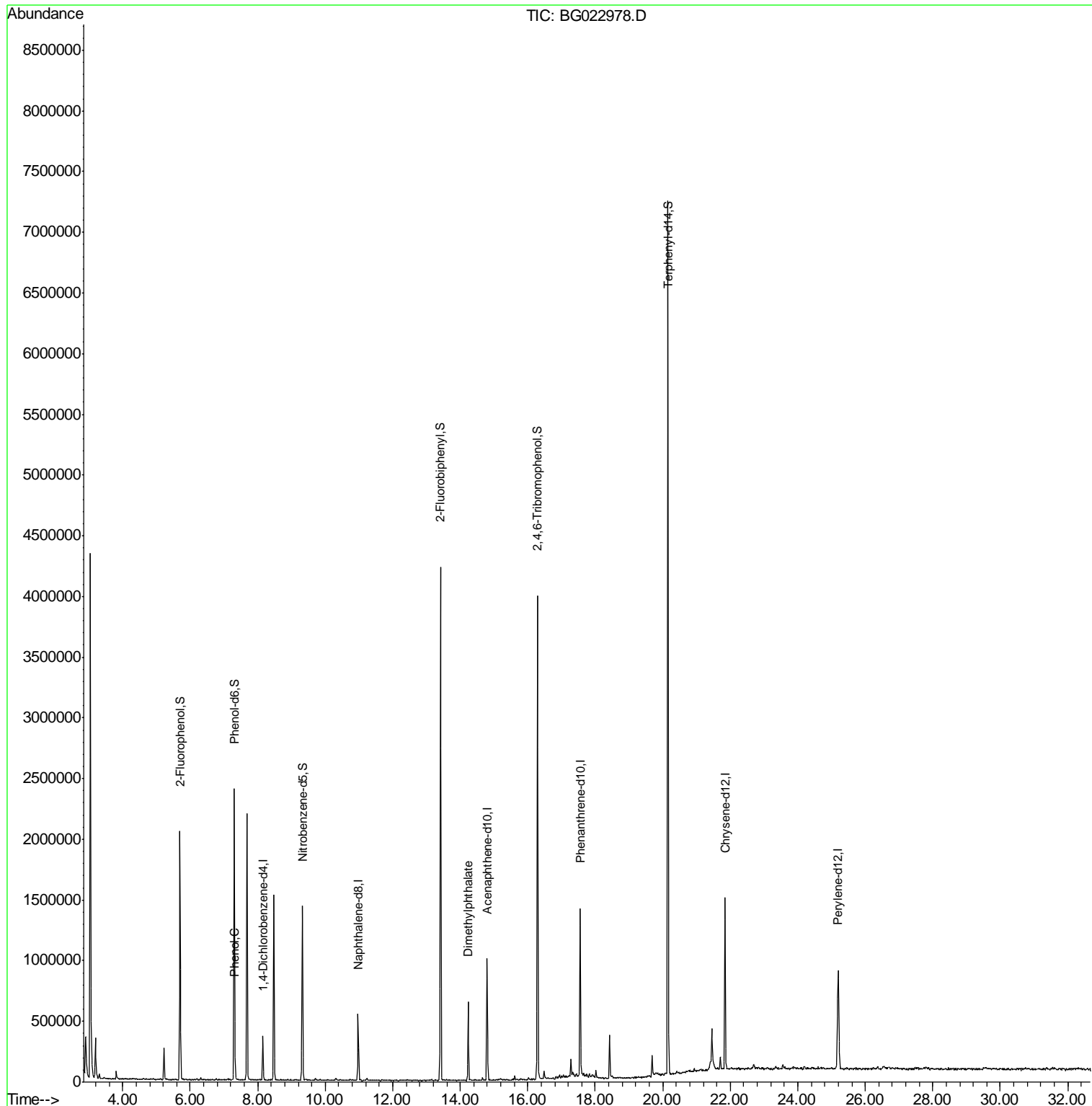
Internal Standards	R.T.	QIon	Response	Conc	Units	Dev(Min)
1) 1,4-Dichlorobenzene-d4	8.15	152	91259	20.00	ng	0.00
21) Naphthalene-d8	10.98	136	431270	20.00	ng	0.00
38) Acenaphthene-d10	14.79	164	349317	20.00	ng	0.00
63) Phenanthrene-d10	17.56	188	829543	20.00	ng	0.00
75) Chrysene-d12	21.84	240	914410	20.00	ng	0.00
86) Perylene-d12	25.19	264	924720	20.00	ng	0.00
System Monitoring Compounds						
5) 2-Fluorophenol	5.70	112	820036	146.96	ng	0.00
7) Phenol-d6	7.31	99	1333039	152.53	ng	0.00
23) Nitrobenzene-d5	9.32	82	938419	93.17	ng	0.00
41) 2,4,6-Tribromophenol	16.29	330	761817	121.35	ng	0.00
44) 2-Fluorobiphenyl	13.41	172	2038097	91.90	ng	0.00
78) Terphenyl-d14	20.15	244	2874872	113.27	ng	0.00
Target Compounds						Qvalue
10) Phenol	7.33	94	18607	2.07	ng	85
49) Dimethylphthalate	14.24	163	400355	14.03	ng	97

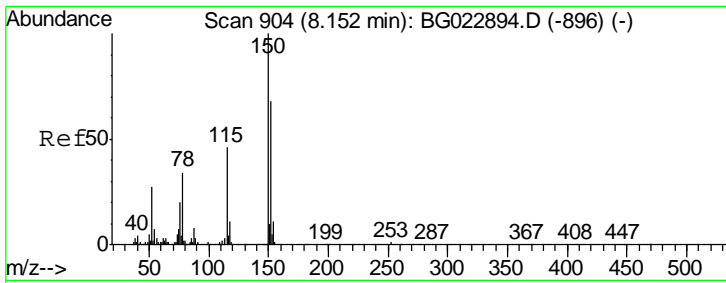
(#) = qualifier out of range (m) = manual integration (+) = signals summed

Data Path : Z:\HPCHEM1\BNA_G\DATA\BG071016\
 Data File : BG022978.D
 Acq On : 9 Jul 2016 23:29
 Operator : UM/SJ
 Sample : H3935-14
 Misc :
 ALS Vial : 14 Sample Multiplier: 1

Instrument :
 BNA_G
 ClientSampleId :
 C3-5

Quant Time: Jul 11 02:30:57 2016
 Quant Method : Z:\HPCHEM1\BNA_G\METHODS\8270-BG070816.M
 Quant Title : ASP BNA STANDARDS FOR 5 POINT CALIBRATION
 QLast Update : Thu Jul 07 16:51:07 2016
 Response via : Initial Calibration

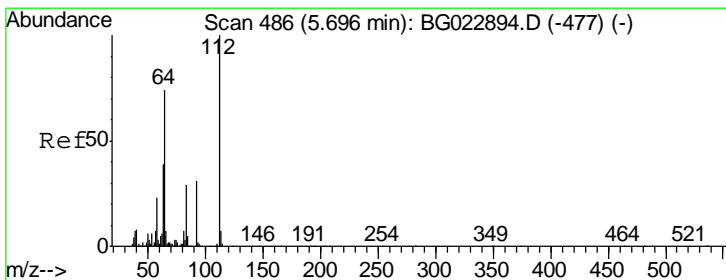
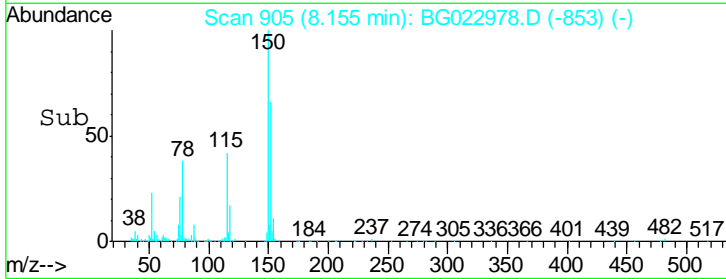
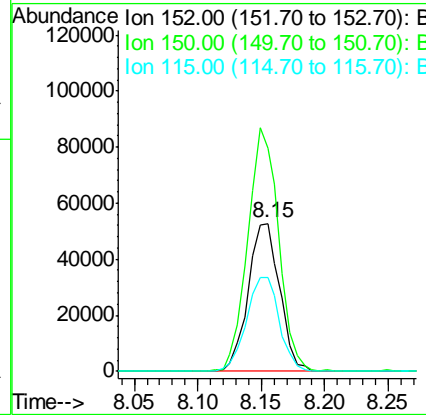
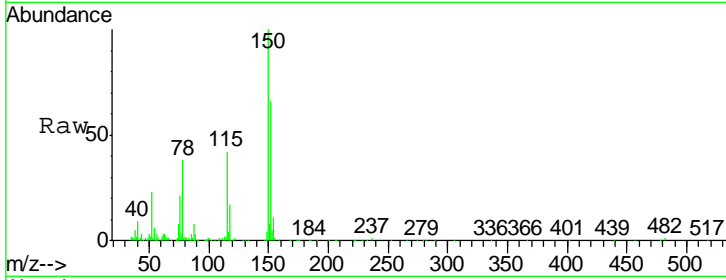




#1
 1,4-Dichlorobenzene-d4
 Concen: 20.00 ng
 RT: 8.15 min Scan# 905
 Delta R.T. 0.00 min
 Lab File: BG022978.D
 Acq: 9 Jul 2016 23:29

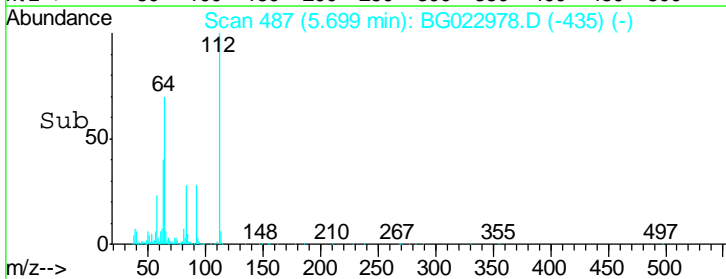
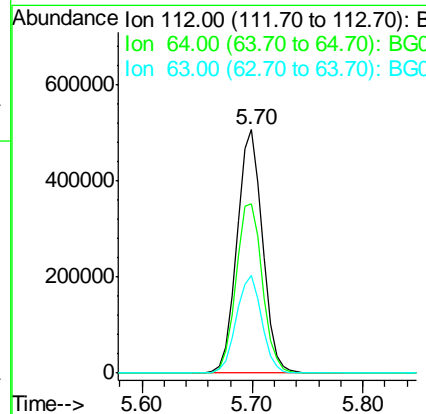
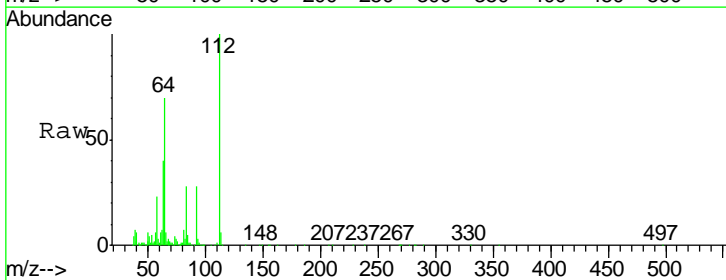
Instrument :
 BNA_G
ClientSampled :
 C3-5

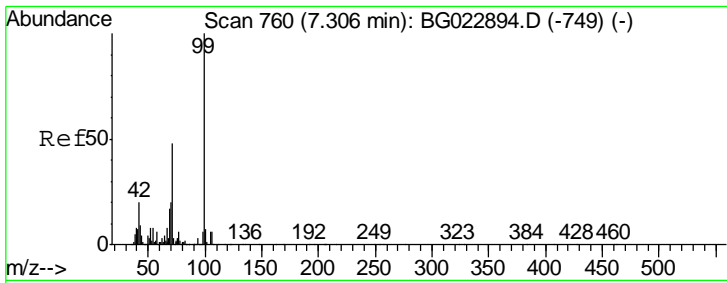
Tgt Ion	Resp	Lower	Upper
152	91259		
152	100		
150	151.6	144.7	217.1
115	63.8	64.0	96.0#



#5
 2-Fluorophenol
 Concen: 146.96 ng
 RT: 5.70 min Scan# 487
 Delta R.T. 0.00 min
 Lab File: BG022978.D
 Acq: 9 Jul 2016 23:29

Tgt Ion	Resp	Lower	Upper
112	820036		
112	100		
64	69.8	59.0	88.4
63	40.1	37.8	56.8

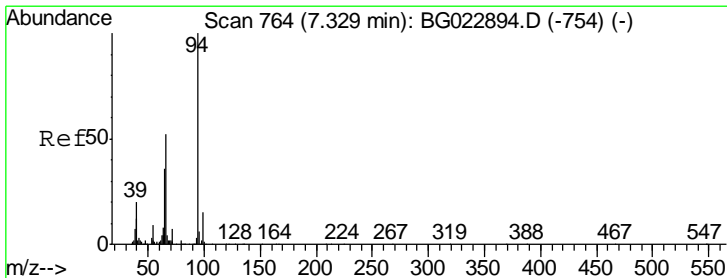
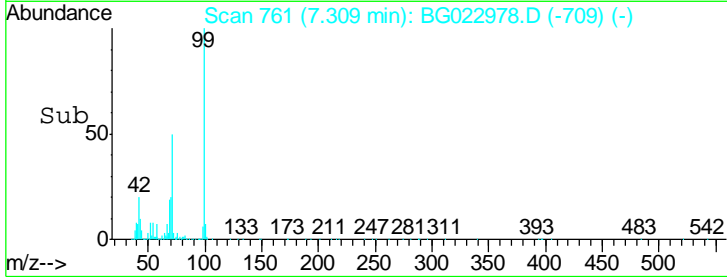
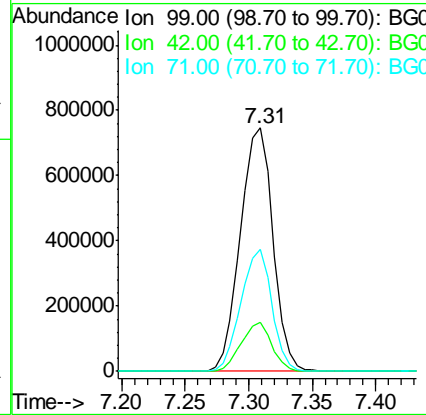
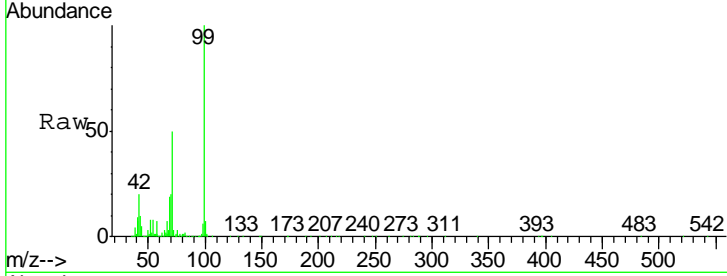




#7
 Phenol-d6
 Concen: 152.53 ng
 RT: 7.31 min Scan# 761
 Delta R.T. 0.00 min
 Lab File: BG022978.D
 Acq: 9 Jul 2016 23:29

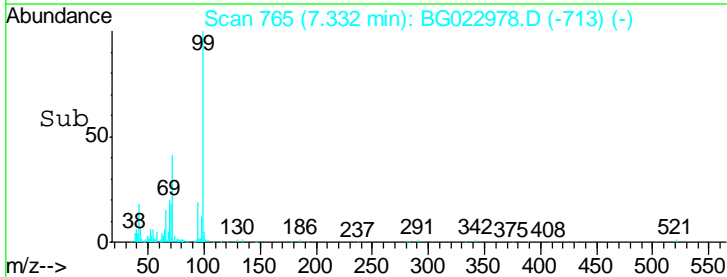
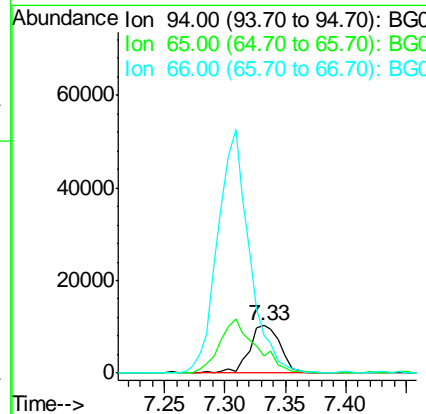
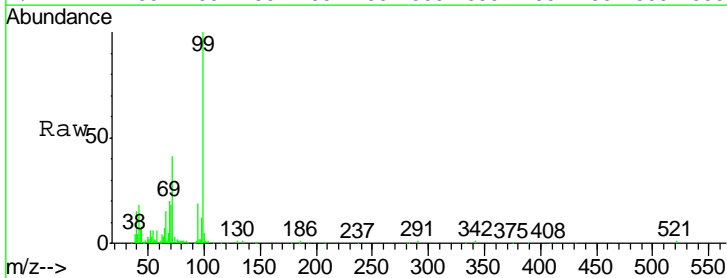
Instrument :
 BNA_G
 ClientSampled :
 C3-5

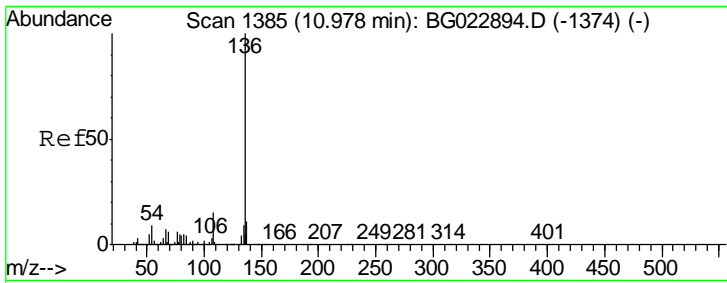
Tgt Ion	Resp	Lower	Upper
99	1333039		
Ion Ratio			
99	100		
42	20.4	17.8	26.6
71	50.1	41.5	62.3



#10
 Phenol
 Concen: 2.07 ng
 RT: 7.33 min Scan# 765
 Delta R.T. 0.00 min
 Lab File: BG022978.D
 Acq: 9 Jul 2016 23:29

Tgt Ion	Resp	Lower	Upper
94	18607		
Ion Ratio			
94	100		
65	36.2	18.1	58.1
66	78.7	42.1	82.1

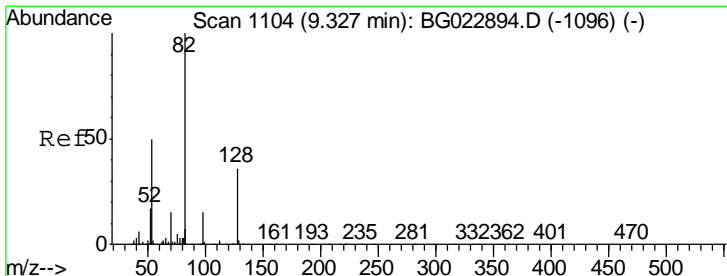
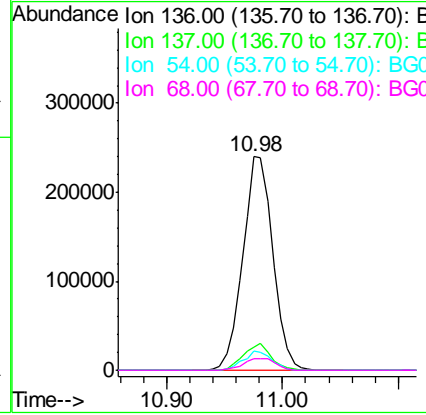
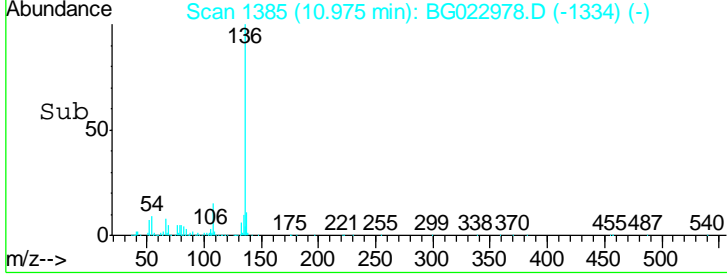
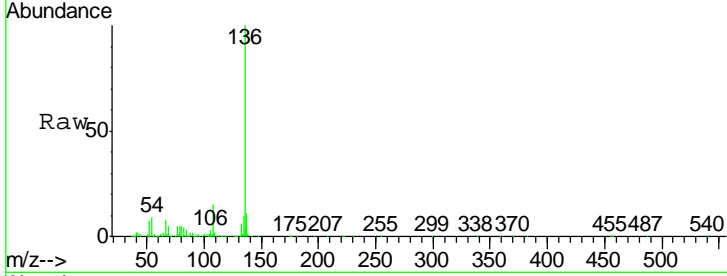




#21
 Naphthalene-d8
 Concen: 20.00 ng
 RT: 10.98 min Scan# 1385
 Delta R.T. -0.00 min
 Lab File: BG022978.D
 Acq: 9 Jul 2016 23:29

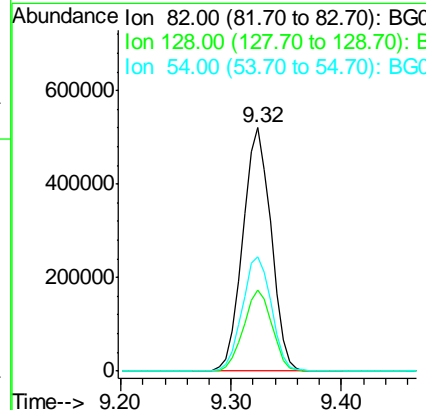
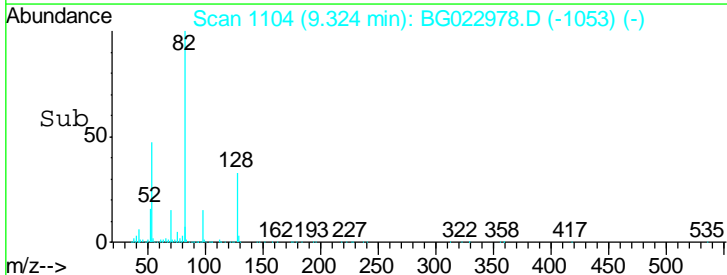
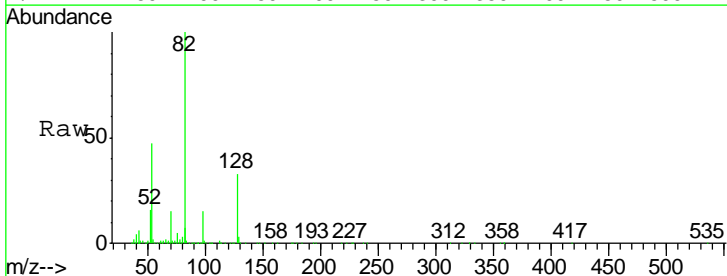
Instrument :
 BNA_G
 ClientSampled :
 C3-5

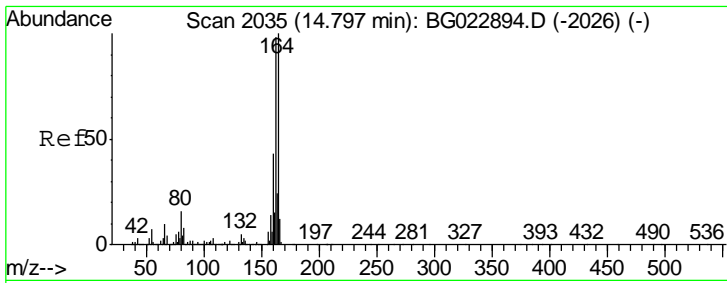
Tgt Ion	Resp	Lower	Upper
136	431270		
137	10.6	9.6	14.4
54	8.8	7.3	10.9
68	5.4	5.3	7.9



#23
 Nitrobenzene-d5
 Concen: 93.17 ng
 RT: 9.32 min Scan# 1104
 Delta R.T. -0.00 min
 Lab File: BG022978.D
 Acq: 9 Jul 2016 23:29

Tgt Ion	Resp	Lower	Upper
82	938419		
128	33.2	24.4	36.6
54	47.1	41.4	62.0

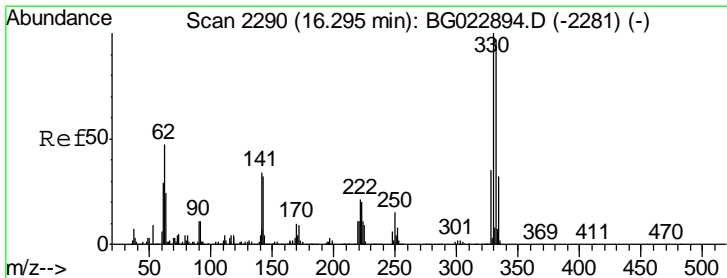
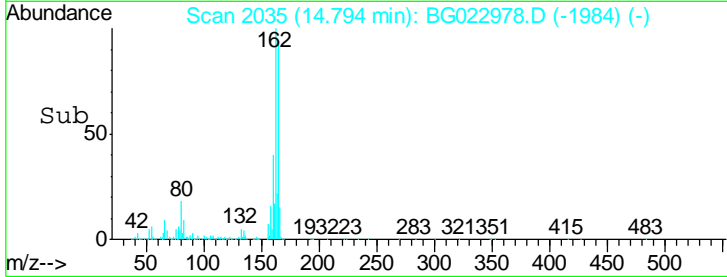
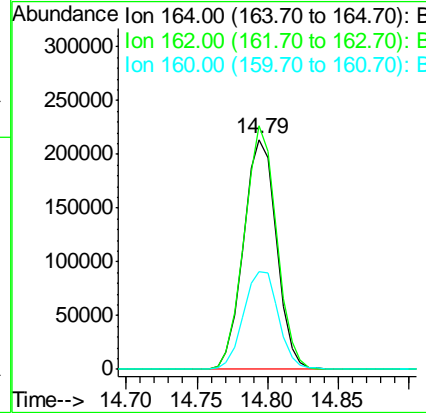
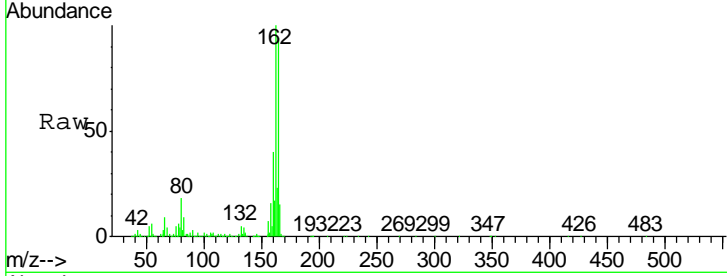




#38
 Acenaphthene-d10
 Concen: 20.00 ng
 RT: 14.79 min Scan# 2035
 Delta R.T. -0.00 min
 Lab File: BG022978.D
 Acq: 9 Jul 2016 23:29

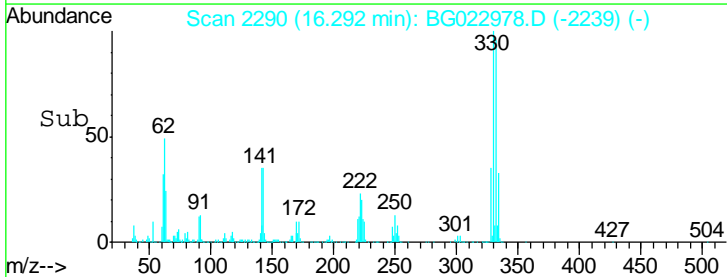
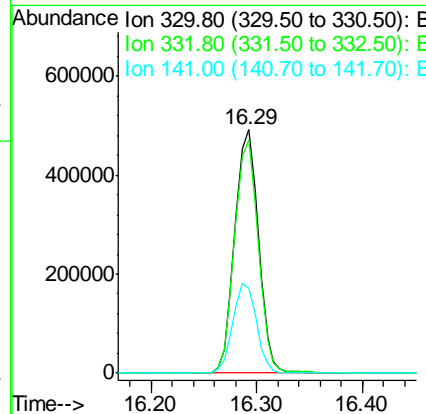
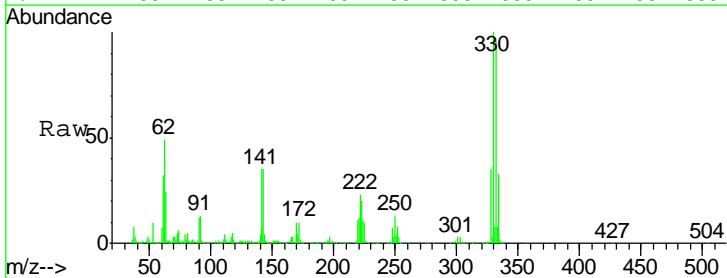
Instrument :
 BNA_G
 ClientSampled :
 C3-5

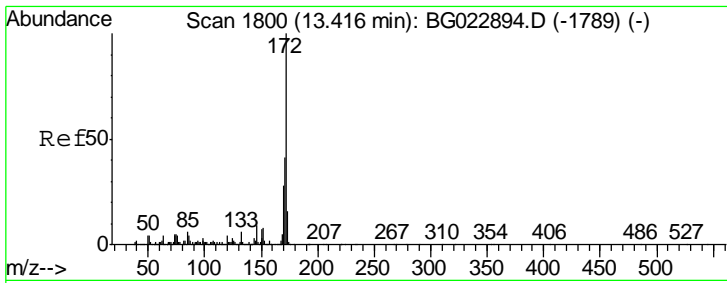
Tgt Ion	Resp	Lower	Upper
164	100		
162	105.8	87.7	131.5
160	42.6	37.2	55.8



#41
 2,4,6-Tribromophenol
 Concen: 121.35 ng
 RT: 16.29 min Scan# 2290
 Delta R.T. -0.00 min
 Lab File: BG022978.D
 Acq: 9 Jul 2016 23:29

Tgt Ion	Resp	Lower	Upper
330	100		
332	95.8	77.4	116.2
141	36.7	31.7	47.5

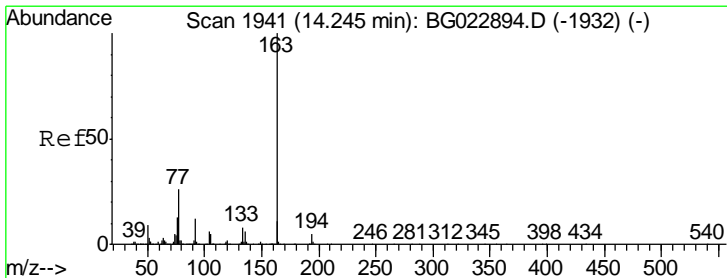
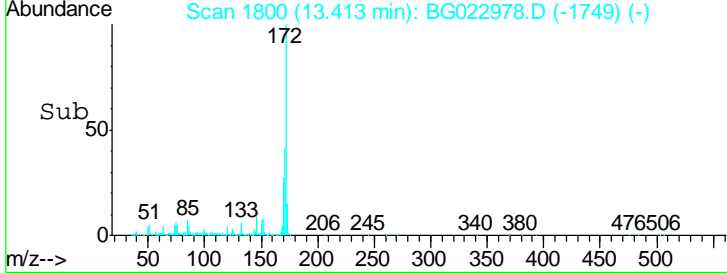
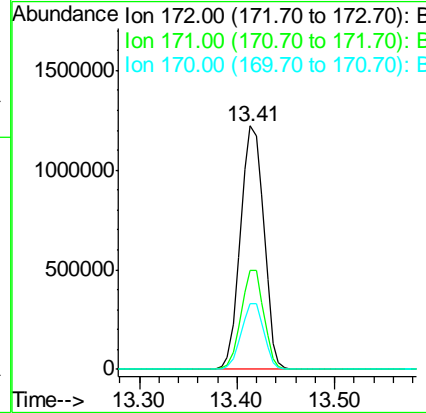
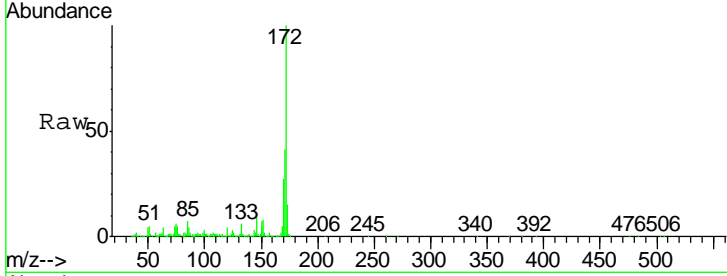




#44
 2-Fluorobiphenyl
 Concen: 91.90 ng
 RT: 13.41 min Scan# 1800
 Delta R.T. -0.00 min
 Lab File: BG022978.D
 Acq: 9 Jul 2016 23:29

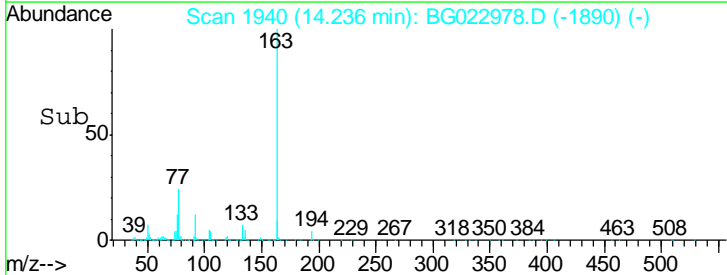
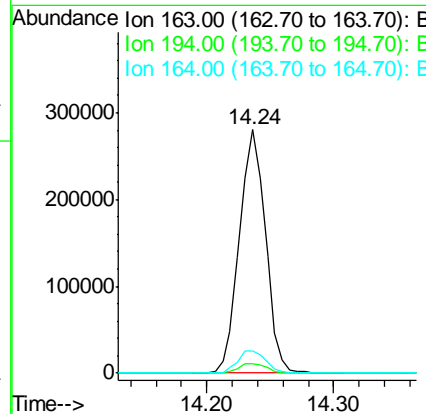
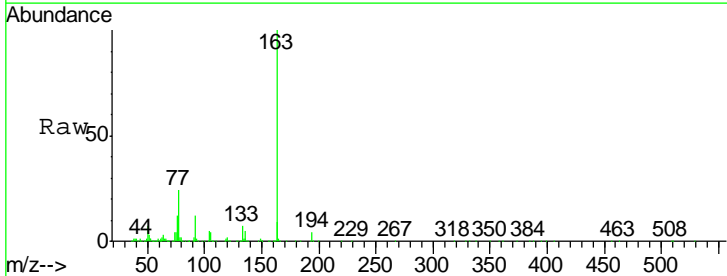
Instrument :
 BNA_G
 ClientSampled :
 C3-5

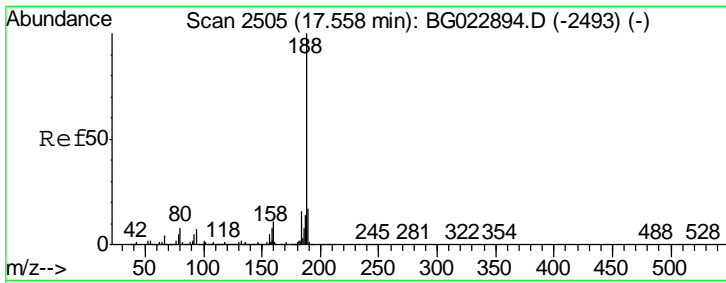
Tgt Ion	Resp	Lower	Upper
172	100		
171	40.8	31.6	47.4
170	27.2	21.3	31.9



#49
 Dimethylphthalate
 Concen: 14.03 ng
 RT: 14.24 min Scan# 1940
 Delta R.T. -0.01 min
 Lab File: BG022978.D
 Acq: 9 Jul 2016 23:29

Tgt Ion	Resp	Lower	Upper
163	100		
194	3.7	3.6	5.4
164	9.0	8.1	12.1

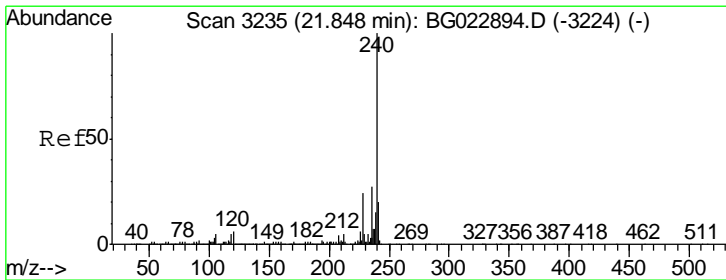
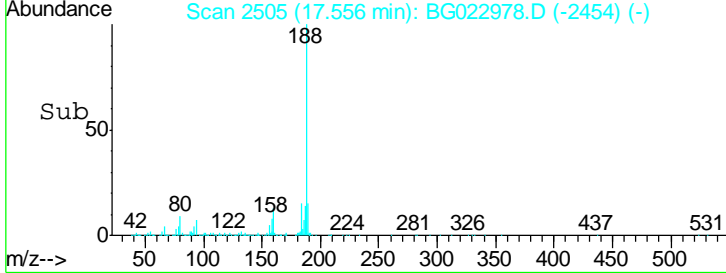
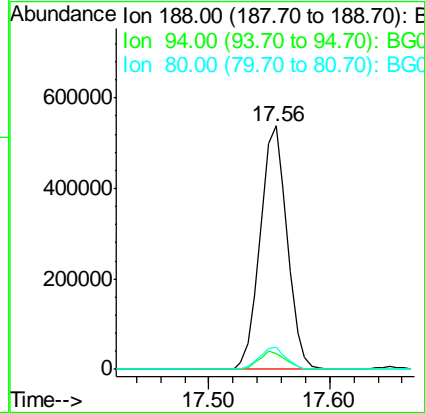
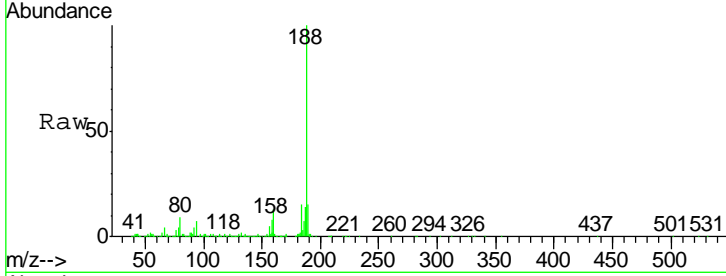




#63
 Phenanthrene-d10
 Concen: 20.00 ng
 RT: 17.56 min Scan# 2505
 Delta R.T. -0.00 min
 Lab File: BG022978.D
 Acq: 9 Jul 2016 23:29

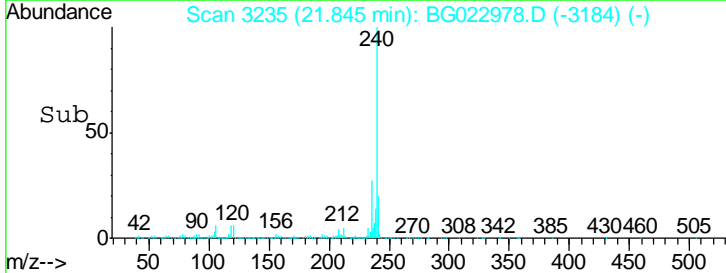
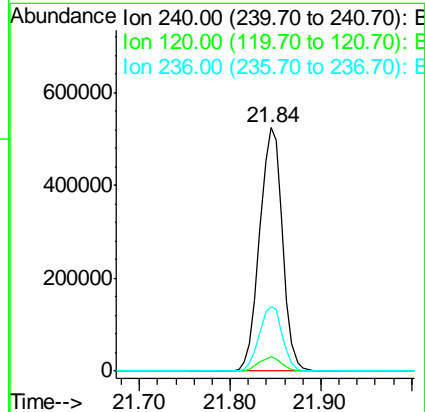
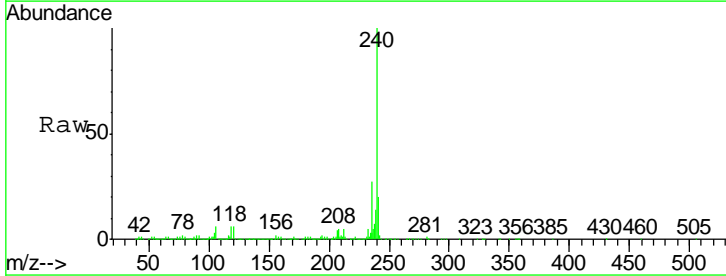
Instrument :
 BNA_G
 ClientSampled :
 C3-5

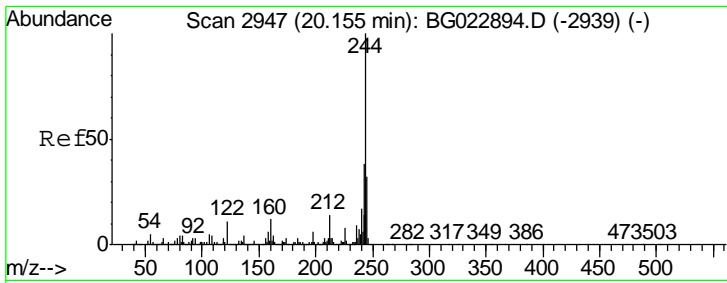
Tgt Ion	Resp	Lower	Upper
188	100		
94	6.7	5.2	7.8
80	9.0	7.2	10.8



#75
 Chrysene-d12
 Concen: 20.00 ng
 RT: 21.84 min Scan# 3235
 Delta R.T. -0.00 min
 Lab File: BG022978.D
 Acq: 9 Jul 2016 23:29

Tgt Ion	Resp	Lower	Upper
240	100		
120	6.0	4.1	6.1
236	26.5	21.1	31.7

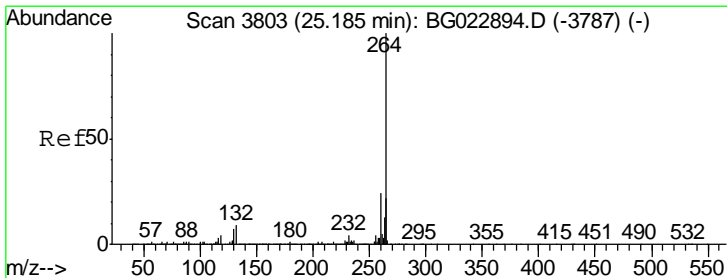
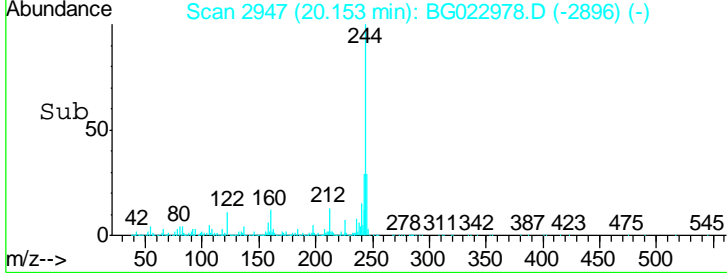
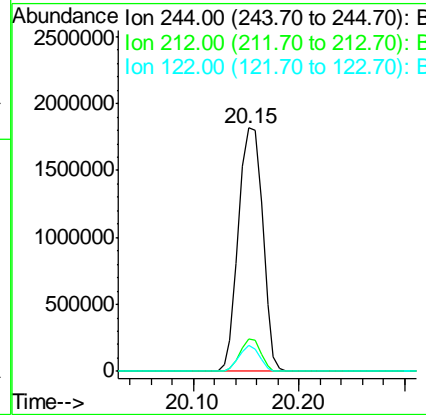
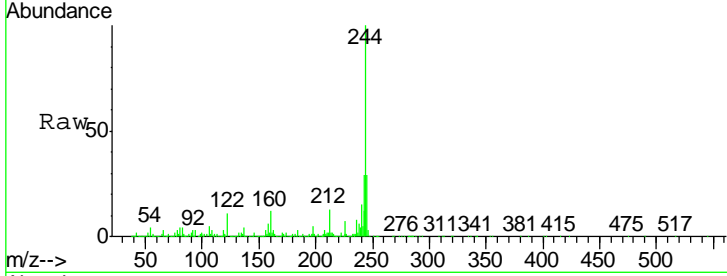




#78
 Terphenyl-d14
 Concen: 113.27 ng
 RT: 20.15 min Scan# 2947
 Delta R.T. -0.00 min
 Lab File: BG022978.D
 Acq: 9 Jul 2016 23:29

Instrument :
 BNA_G
 ClientSampled :
 C3-5

Tgt Ion	Ratio	Lower	Upper
244	100		
212	13.1	10.8	16.2
122	10.5	8.0	12.0



#86
 Perylene-d12
 Concen: 20.00 ng
 RT: 25.19 min Scan# 3805
 Delta R.T. 0.01 min
 Lab File: BG022978.D
 Acq: 9 Jul 2016 23:29

Tgt Ion	Ratio	Lower	Upper
264	100		
260	23.9	18.4	27.6
265	21.9	18.9	28.3

