

Data Path : Z:\HPCHEM1\BNA\_G\DATA\BG071016\  
 Data File : BG022984.D  
 Acq On : 10 Jul 2016 4:09  
 Operator : UM/SJ  
 Sample : H3934-03  
 Misc :  
 ALS Vial : 17 Sample Multiplier: 1

Instrument :  
 BNA\_G  
 ClientSampleId :  
 C2.2-01

Quant Time: Jul 11 02:33:59 2016  
 Quant Method : Z:\HPCHEM1\BNA\_G\METHODS\8270-BG070816.M  
 Quant Title : ASP BNA STANDARDS FOR 5 POINT CALIBRATION  
 QLast Update : Thu Jul 07 16:51:07 2016  
 Response via : Initial Calibration

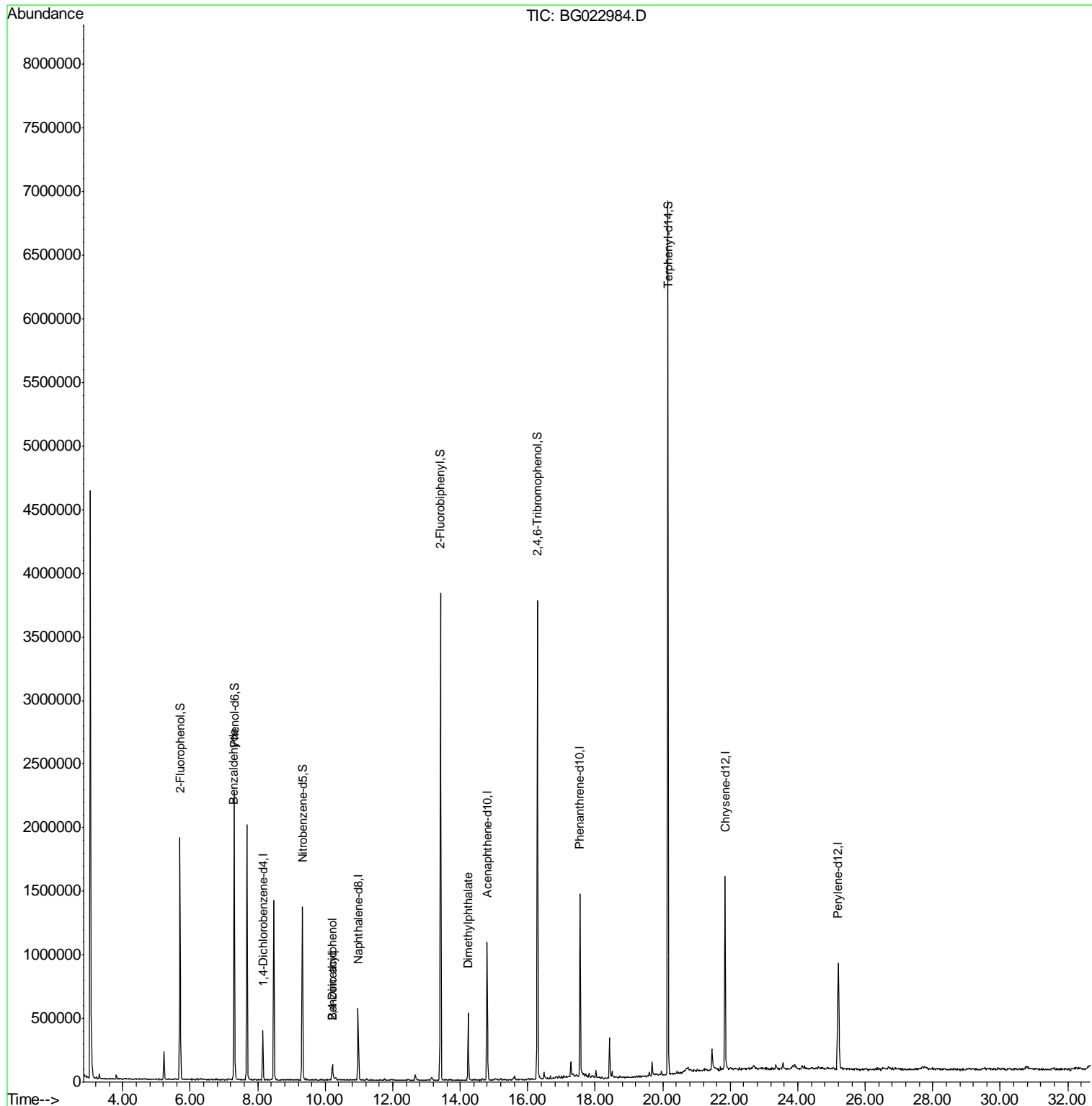
Internal Standards	R.T.	QIon	Response	Conc	Units	Dev(Min)
1) 1,4-Dichlorobenzene-d4	8.15	152	96681	20.00	ng	0.00
21) Naphthalene-d8	10.98	136	448600	20.00	ng	0.00
38) Acenaphthene-d10	14.79	164	367987	20.00	ng	0.00
63) Phenanthrene-d10	17.55	188	867276	20.00	ng	0.00
75) Chrysene-d12	21.84	240	963414	20.00	ng	0.00
86) Perylene-d12	25.21	264	954631	20.00	ng	0.02
System Monitoring Compounds						
5) 2-Fluorophenol	5.70	112	772654	130.71	ng	0.00
7) Phenol-d6	7.30	99	1256262	135.69	ng	0.00
23) Nitrobenzene-d5	9.32	82	885873	84.56	ng	0.00
41) 2,4,6-Tribromophenol	16.29	330	714771	108.08	ng	0.00
44) 2-Fluorobiphenyl	13.41	172	1837075	78.63	ng	0.00
78) Terphenyl-d14	20.15	244	2645827	88.46	ng	0.00
Target Compounds						
9) Benzaldehyde	7.29	77	24844	4.02	ng	# 81
27) 2,4-Dimethylphenol	10.22	122	52537	6.96	ng	# 1
32) Benzoic acid	10.22	122	52537	7.65	ng	97
49) Dimethylphthalate	14.24	163	330603	11.00	ng	99

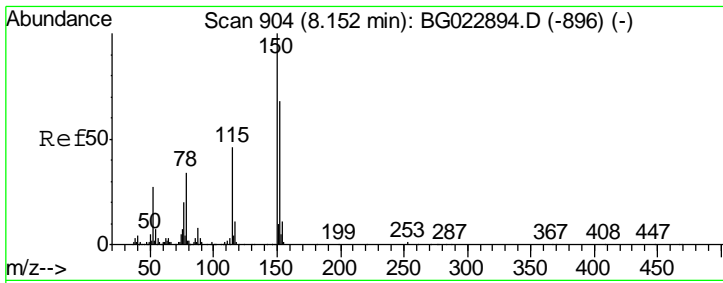
(#) = qualifier out of range (m) = manual integration (+) = signals summed

Data Path : Z:\HPCHEM1\BNA\_G\DATA\BG071016\  
 Data File : BG022984.D  
 Acq On : 10 Jul 2016 4:09  
 Operator : UM/SJ  
 Sample : H3934-03  
 Misc :  
 ALS Vial : 17 Sample Multiplier: 1

Instrument :  
 BNA\_G  
 ClientSampleId :  
 C2.2-01

Quant Time: Jul 11 02:33:59 2016  
 Quant Method : Z:\HPCHEM1\BNA\_G\METHODS\8270-BG070816.M  
 Quant Title : ASP BNA STANDARDS FOR 5 POINT CALIBRATION  
 QLast Update : Thu Jul 07 16:51:07 2016  
 Response via : Initial Calibration

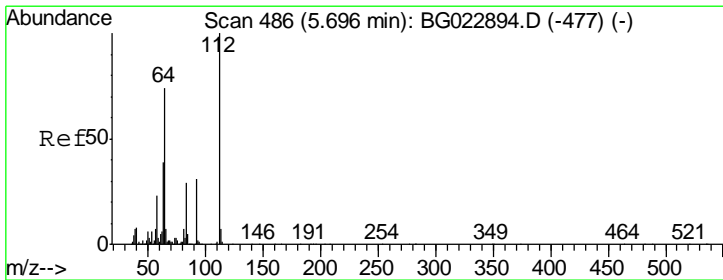
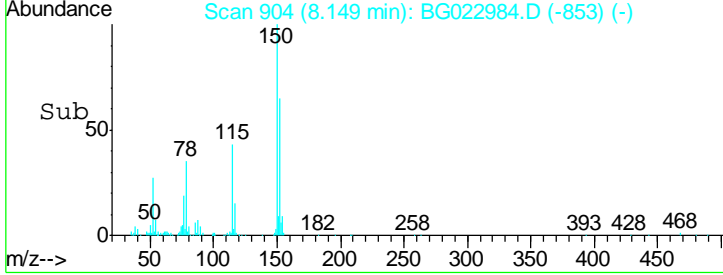
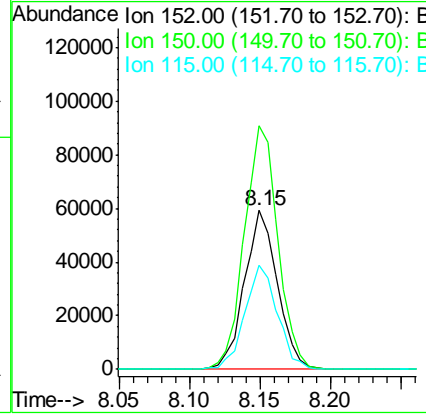
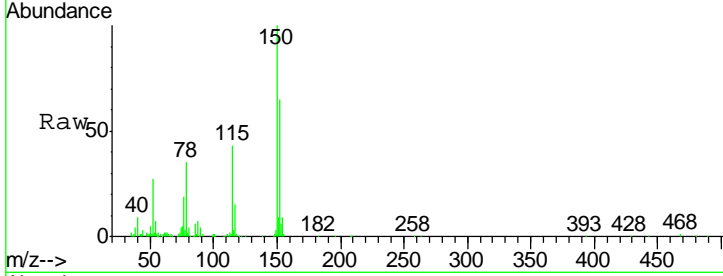




#1  
 1,4-Dichlorobenzene-d4  
 Concen: 20.00 ng  
 RT: 8.15 min Scan# 904  
 Delta R.T. -0.00 min  
 Lab File: BG022984.D  
 Acq: 10 Jul 2016 4:09

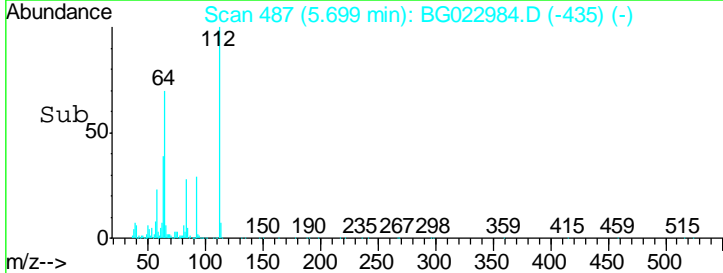
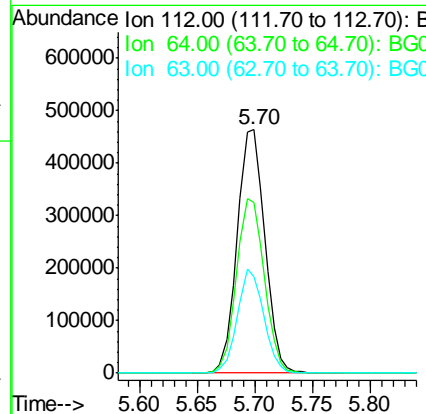
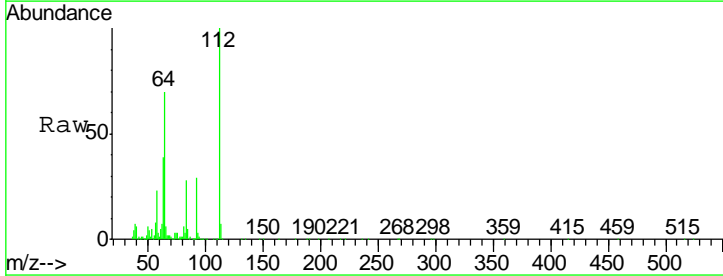
**Instrument :**  
 BNA\_G  
**ClientSampled :**  
 C2.2-01

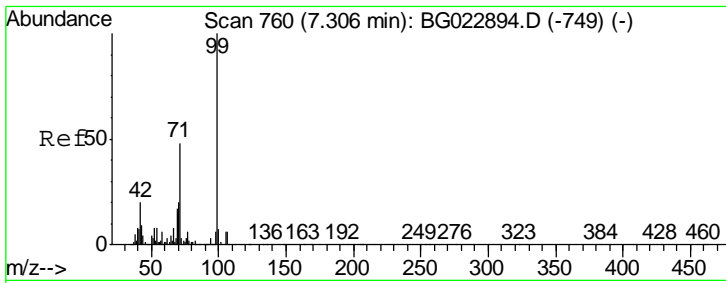
Tgt Ion	Resp	Lower	Upper
152	96681		
152	100		
150	153.2	144.7	217.1
115	65.4	64.0	96.0



#5  
 2-Fluorophenol  
 Concen: 130.71 ng  
 RT: 5.70 min Scan# 487  
 Delta R.T. 0.00 min  
 Lab File: BG022984.D  
 Acq: 10 Jul 2016 4:09

Tgt Ion	Resp	Lower	Upper
112	772654		
112	100		
64	70.1	59.0	88.4
63	39.4	37.8	56.8

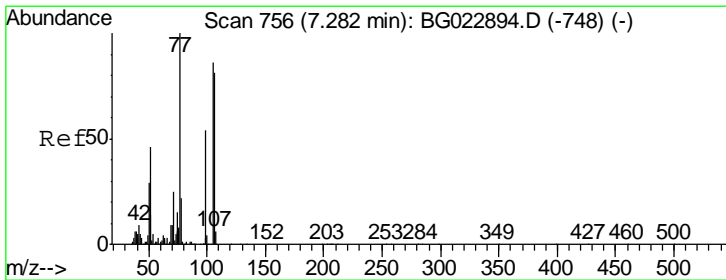
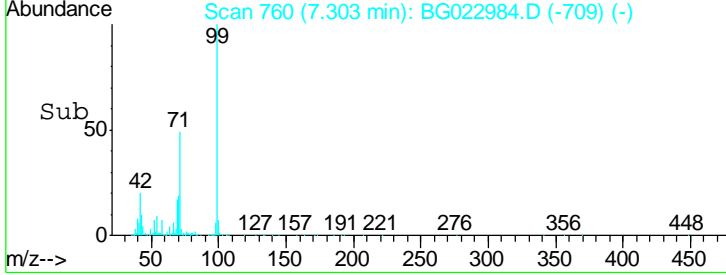
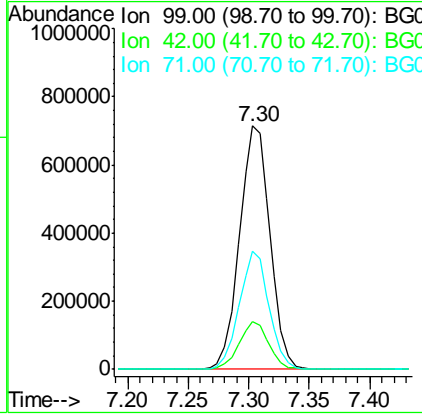
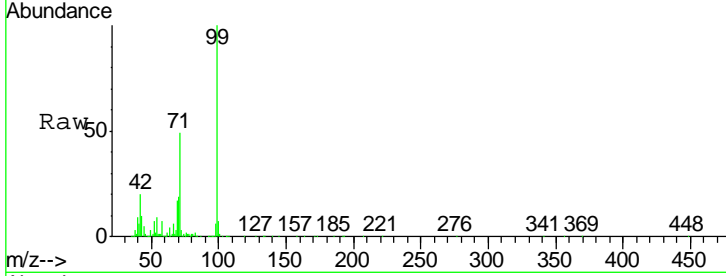




#7  
 Phenol-d6  
 Concen: 135.69 ng  
 RT: 7.30 min Scan# 760  
 Delta R.T. -0.00 min  
 Lab File: BG022984.D  
 Acq: 10 Jul 2016 4:09

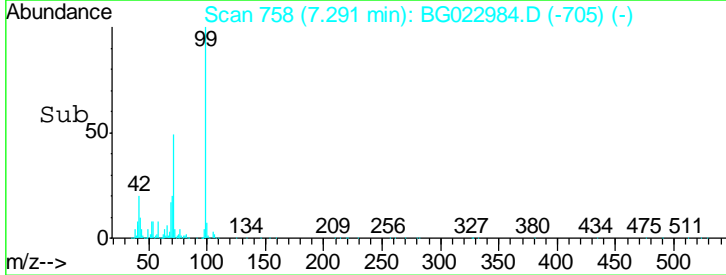
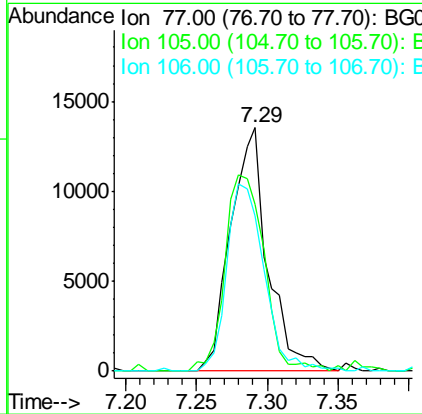
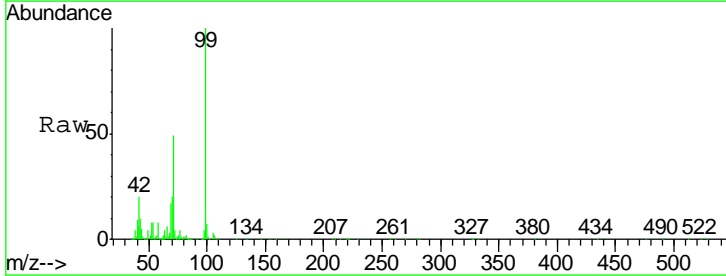
**Instrument :**  
 BNA\_G  
**ClientSampled :**  
 C2.2-01

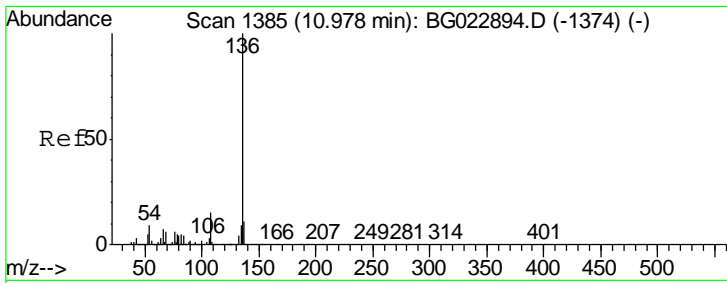
Tgt Ion	Resp	Lower	Upper
99	1256262		
42	19.6	17.8	26.6
71	48.6	41.5	62.3



#9  
 Benzaldehyde  
 Concen: 4.02 ng  
 RT: 7.29 min Scan# 758  
 Delta R.T. 0.01 min  
 Lab File: BG022984.D  
 Acq: 10 Jul 2016 4:09

Tgt Ion	Resp	Lower	Upper
77	24844		
105	68.5	58.7	98.7
106	63.8	67.5	107.5#

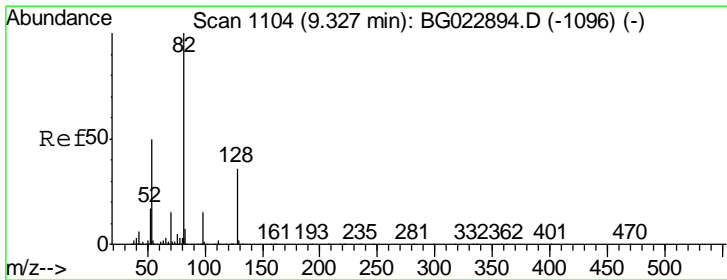
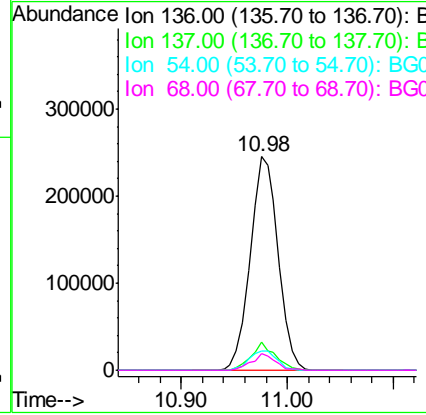
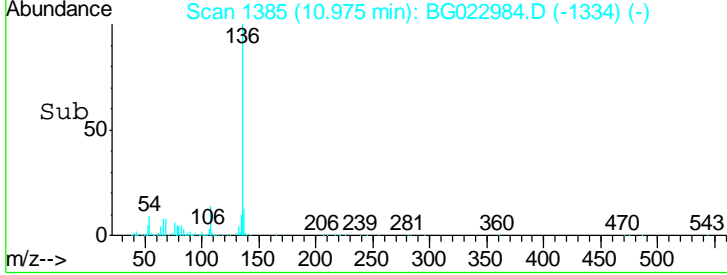
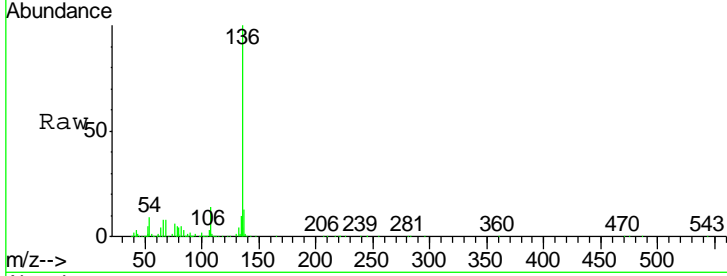




#21  
 Naphthalene-d8  
 Concen: 20.00 ng  
 RT: 10.98 min Scan# 1385  
 Delta R.T. -0.00 min  
 Lab File: BG022984.D  
 Acq: 10 Jul 2016 4:09

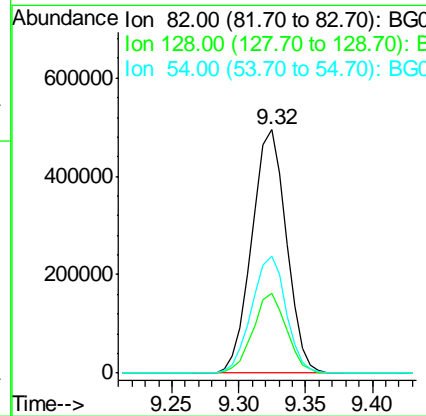
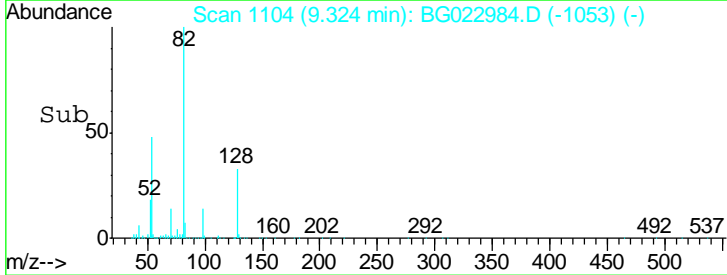
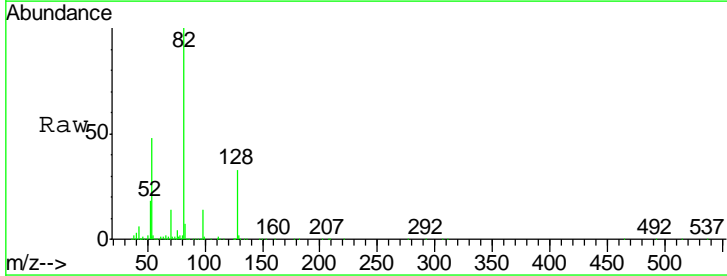
Instrument :  
 BNA\_G  
 ClientSampled :  
 C2.2-01

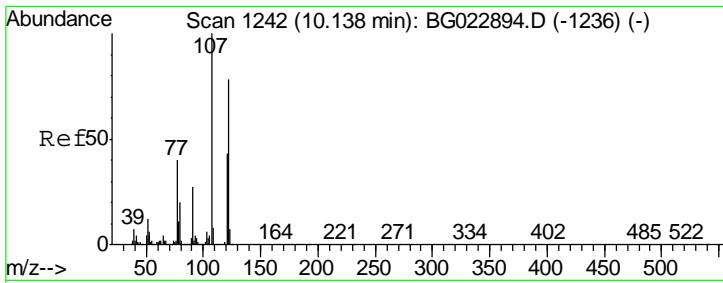
Tgt Ion	Resp	Lower	Upper
136	448600		
137	12.9	9.6	14.4
54	9.1	7.3	10.9
68	7.6	5.3	7.9



#23  
 Nitrobenzene-d5  
 Concen: 84.56 ng  
 RT: 9.32 min Scan# 1104  
 Delta R.T. -0.00 min  
 Lab File: BG022984.D  
 Acq: 10 Jul 2016 4:09

Tgt Ion	Resp	Lower	Upper
82	885873		
128	32.7	24.4	36.6
54	48.1	41.4	62.0

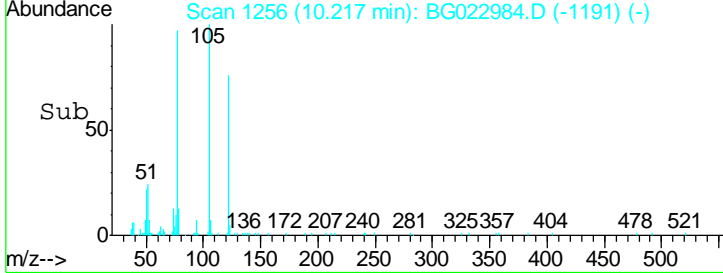
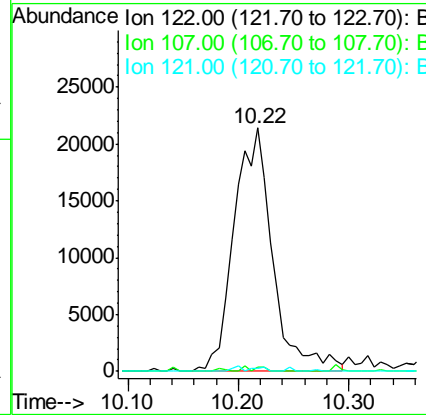
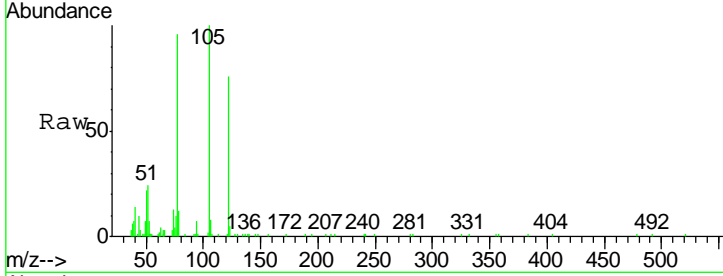




#27  
 2,4-Dimethylphenol  
 Concen: 6.96 ng  
 RT: 10.22 min Scan# 1256  
 Delta R.T. 0.08 min  
 Lab File: BG022984.D  
 Acq: 10 Jul 2016 4:09

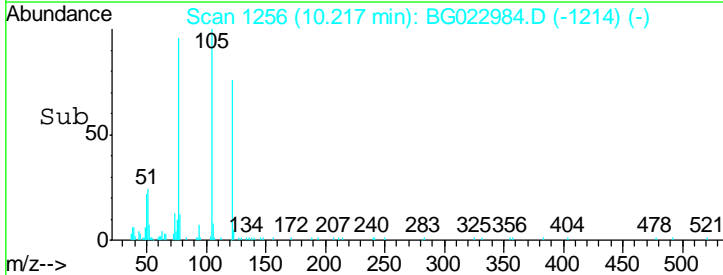
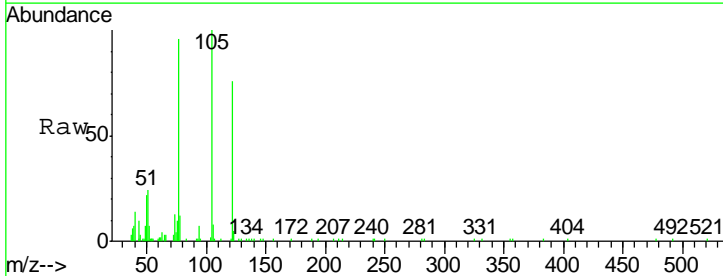
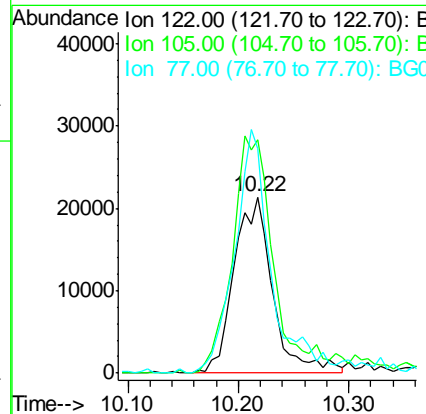
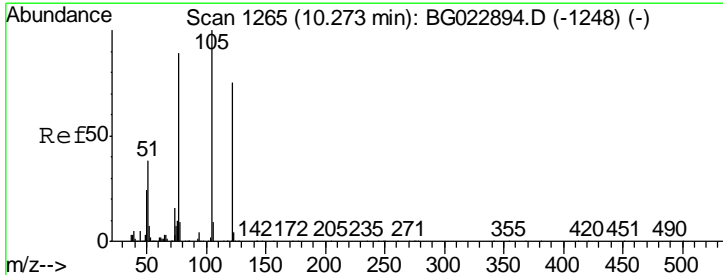
Instrument :  
 BNA\_G  
 ClientSampled :  
 C2.2-01

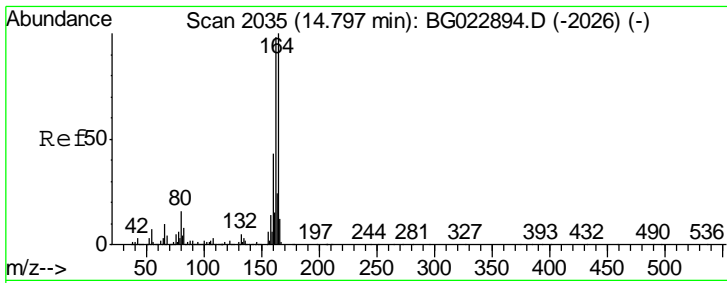
Tgt Ion	Ratio	Lower	Upper
122	100		
107	1.9	117.0	175.4#
121	1.1	50.1	75.1#



#32  
 Benzoic acid  
 Concen: 7.65 ng  
 RT: 10.22 min Scan# 1256  
 Delta R.T. -0.06 min  
 Lab File: BG022984.D  
 Acq: 10 Jul 2016 4:09

Tgt Ion	Ratio	Lower	Upper
122	100		
105	132.1	117.2	157.2
77	127.0	109.2	149.2

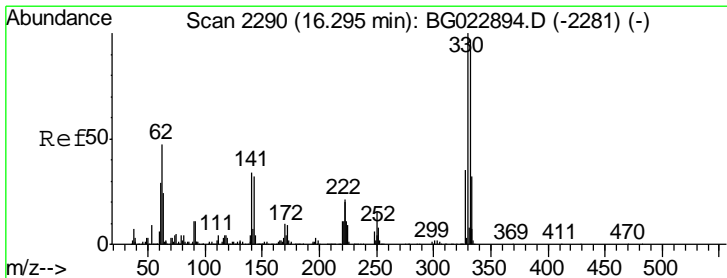
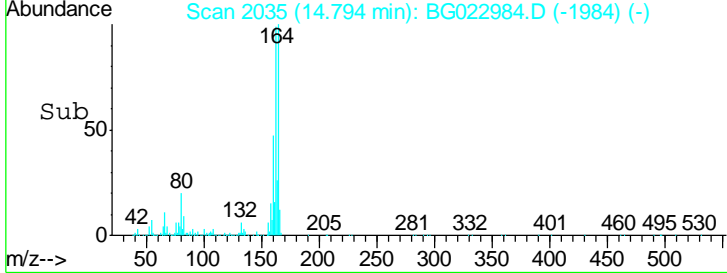
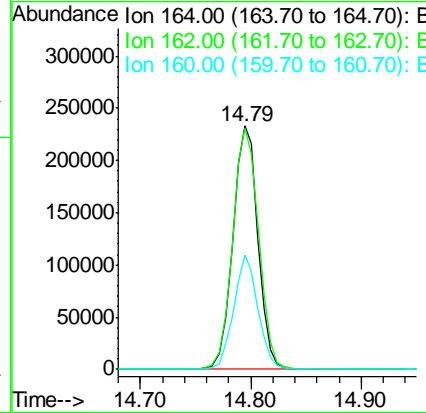
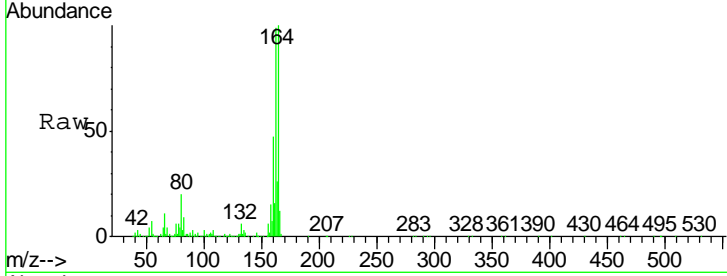




#38  
 Acenaphthene-d10  
 Concen: 20.00 ng  
 RT: 14.79 min Scan# 2035  
 Delta R.T. -0.00 min  
 Lab File: BG022984.D  
 Acq: 10 Jul 2016 4:09

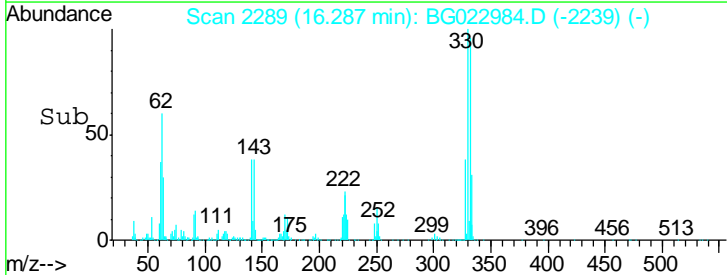
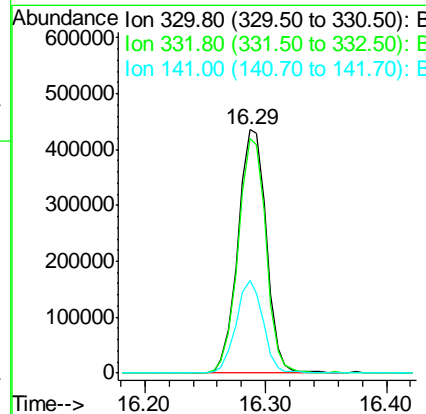
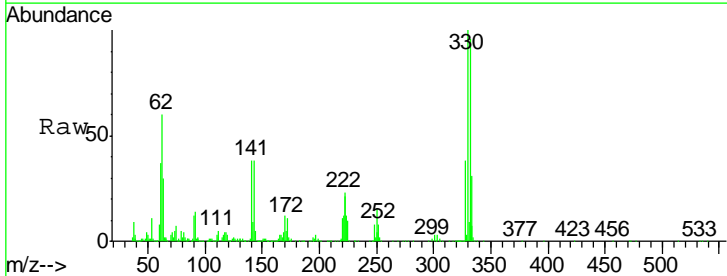
Instrument :  
 BNA\_G  
 ClientSampleId :  
 C2.2-01

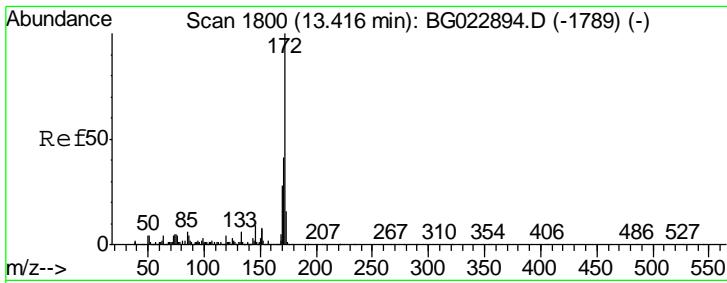
Tgt Ion	Resp	Lower	Upper
164	100		
162	99.0	87.7	131.5
160	46.8	37.2	55.8



#41  
 2,4,6-Tribromophenol  
 Concen: 108.08 ng  
 RT: 16.29 min Scan# 2289  
 Delta R.T. -0.01 min  
 Lab File: BG022984.D  
 Acq: 10 Jul 2016 4:09

Tgt Ion	Resp	Lower	Upper
330	100		
332	94.5	77.4	116.2
141	36.1	31.7	47.5

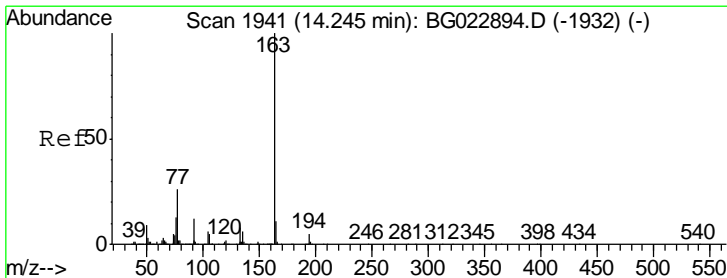
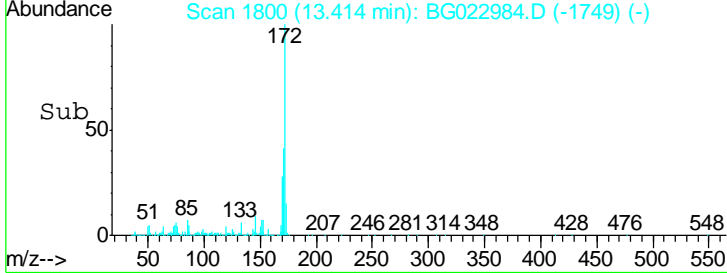
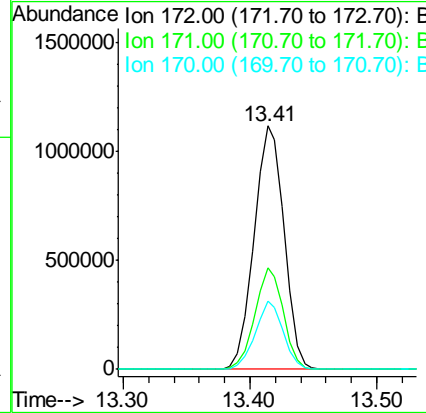
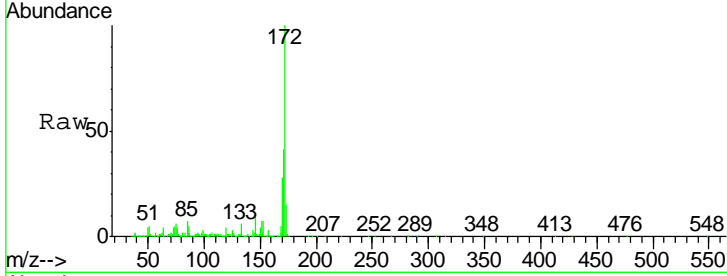




#44  
 2-Fluorobiphenyl  
 Concen: 78.63 ng  
 RT: 13.41 min Scan# 1800  
 Delta R.T. -0.00 min  
 Lab File: BG022984.D  
 Acq: 10 Jul 2016 4:09

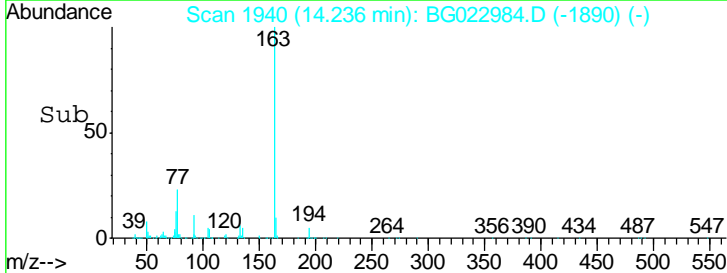
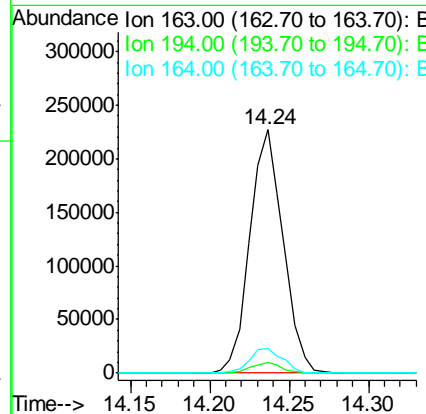
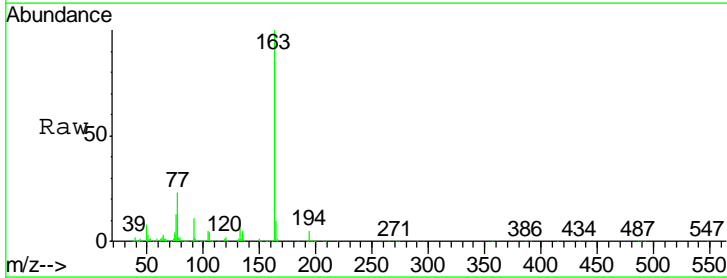
Instrument :  
 BNA\_G  
 ClientSampled :  
 C2.2-01

Tgt Ion	Resp	Lower	Upper
172	1837075		
171	41.5	31.6	47.4
170	28.0	21.3	31.9

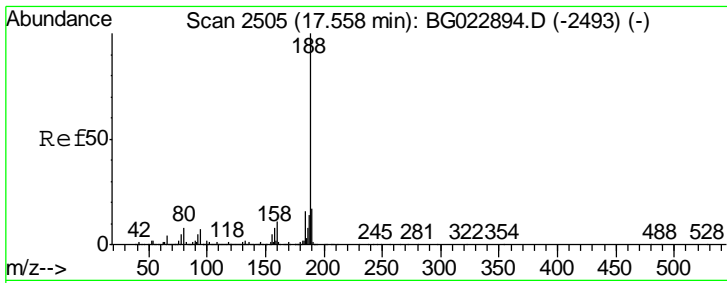


#49  
 Dimethylphthalate  
 Concen: 11.00 ng  
 RT: 14.24 min Scan# 1940  
 Delta R.T. -0.01 min  
 Lab File: BG022984.D  
 Acq: 10 Jul 2016 4:09

Tgt Ion	Resp	Lower	Upper
163	330603		
194	4.6	3.6	5.4
164	10.4	8.1	12.1



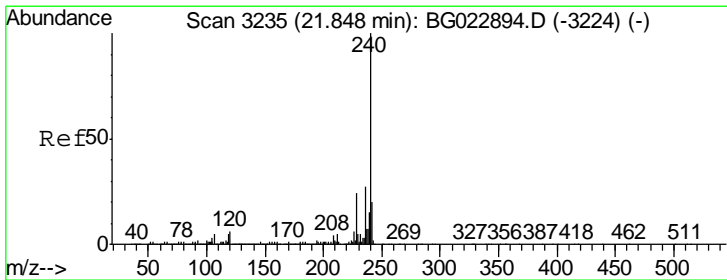
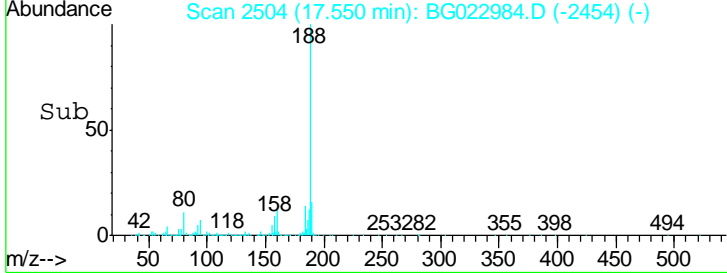
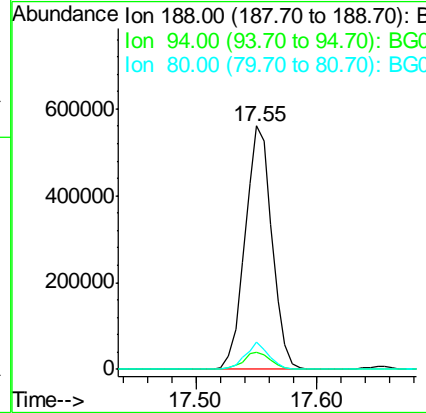
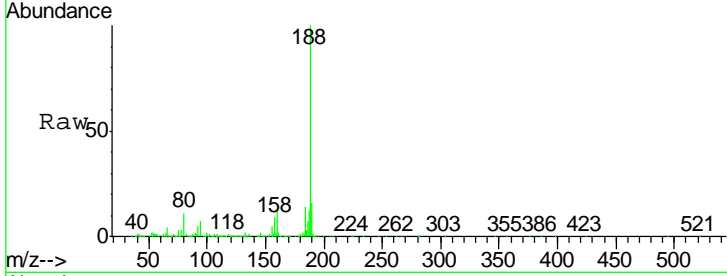




#63  
 Phenanthrene-d10  
 Concen: 20.00 ng  
 RT: 17.55 min Scan# 2504  
 Delta R.T. -0.01 min  
 Lab File: BG022984.D  
 Acq: 10 Jul 2016 4:09

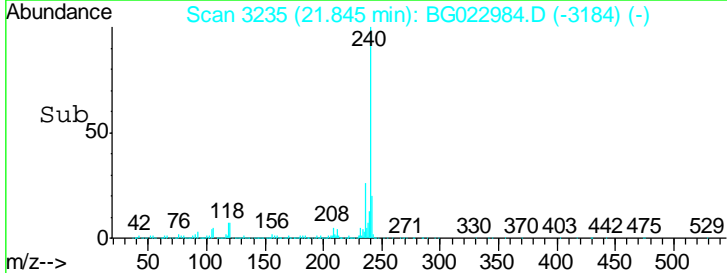
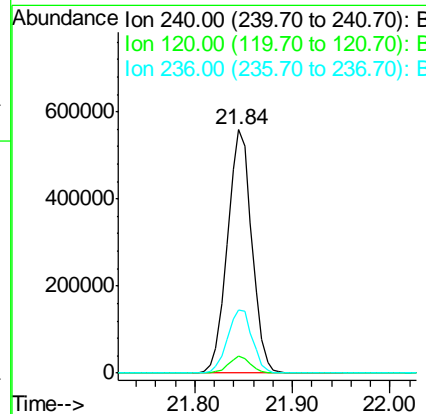
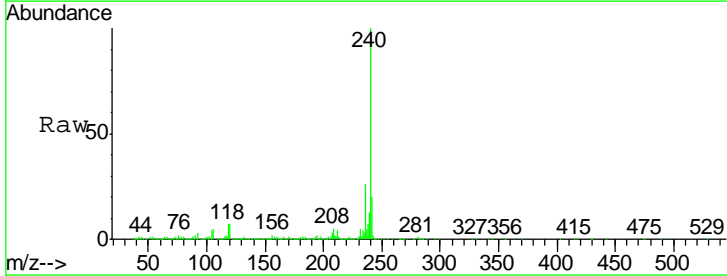
Instrument :  
 BNA\_G  
 ClientSampled :  
 C2.2-01

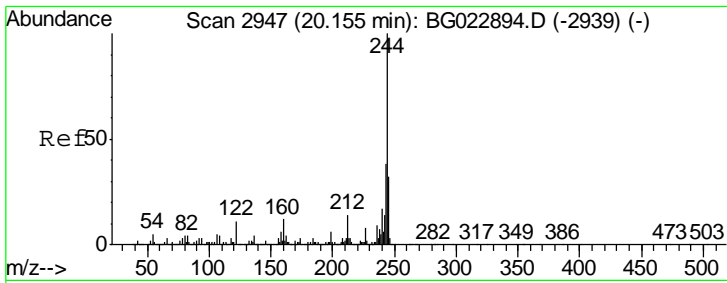
Tgt Ion	Resp	Lower	Upper
188	100		
94	6.8	5.2	7.8
80	11.0	7.2	10.8#



#75  
 Chrysene-d12  
 Concen: 20.00 ng  
 RT: 21.84 min Scan# 3235  
 Delta R.T. -0.00 min  
 Lab File: BG022984.D  
 Acq: 10 Jul 2016 4:09

Tgt Ion	Resp	Lower	Upper
240	100		
120	7.0	4.1	6.1#
236	26.1	21.1	31.7

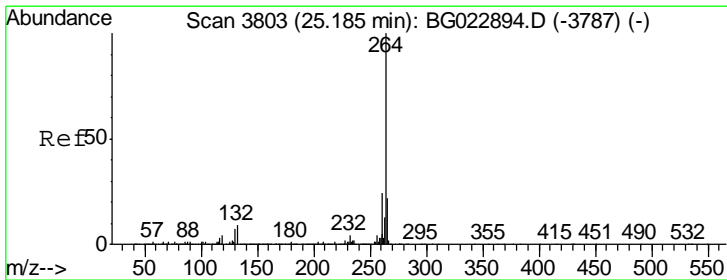
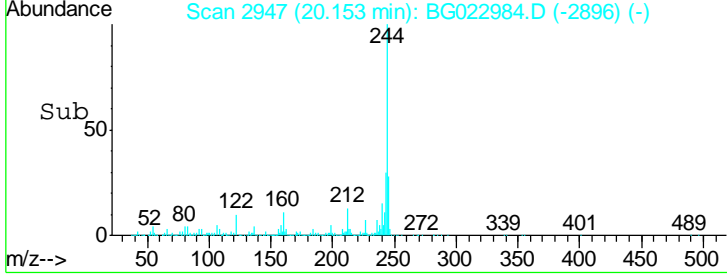
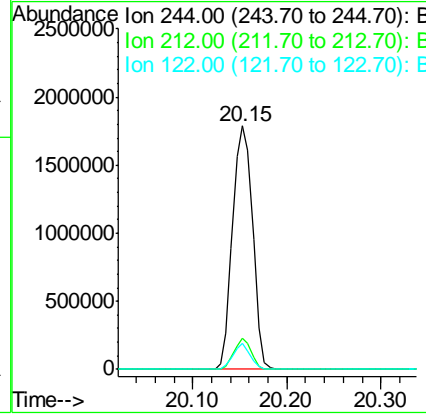
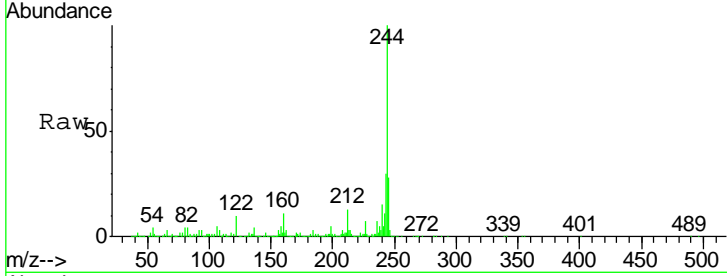




#78  
 Terphenyl-d14  
 Concen: 88.46 ng  
 RT: 20.15 min Scan# 2947  
 Delta R.T. -0.00 min  
 Lab File: BG022984.D  
 Acq: 10 Jul 2016 4:09

Instrument :  
 BNA\_G  
 ClientSampled :  
 C2.2-01

Tgt Ion	Resp	Lower	Upper
244	100		
212	12.6	10.8	16.2
122	10.5	8.0	12.0



#86  
 Perylene-d12  
 Concen: 20.00 ng  
 RT: 25.21 min Scan# 3807  
 Delta R.T. 0.02 min  
 Lab File: BG022984.D  
 Acq: 10 Jul 2016 4:09

Tgt Ion	Resp	Lower	Upper
264	100		
260	23.2	18.4	27.6
265	20.3	18.9	28.3

