

Data Path : Z:\HPCHEM1\BNA_G\DATA\BG071116\
 Data File : BG023012.D
 Acq On : 11 Jul 2016 22:38
 Operator : UM/SJ
 Sample : H3967-01
 Misc :
 ALS Vial : 10 Sample Multiplier: 1

Instrument :
 BNA_G
 ClientSampleId :
 S22-0006

Quant Time: Jul 13 01:59:55 2016
 Quant Method : Z:\HPCHEM1\BNA_G\METHODS\8270-BG070816.M
 Quant Title : ASP BNA STANDARDS FOR 5 POINT CALIBRATION
 QLast Update : Tue Jul 12 18:30:58 2016
 Response via : Initial Calibration

Internal Standards	R.T.	QIon	Response	Conc	Units	Dev(Min)
1) 1,4-Dichlorobenzene-d4	8.15	152	91140	20.00	ng	0.00
21) Naphthalene-d8	10.98	136	469789	20.00	ng	0.00
38) Acenaphthene-d10	14.80	164	373471	20.00	ng	0.00
63) Phenanthrene-d10	17.55	188	841694	20.00	ng	0.00
75) Chrysene-d12	21.86	240	937977	20.00	ng	0.01
86) Perylene-d12	25.24	264	934486	20.00	ng	0.06
System Monitoring Compounds						
5) 2-Fluorophenol	5.69	112	323479	58.05	ng	0.00
7) Phenol-d6	7.30	99	330851	37.91	ng	0.00
23) Nitrobenzene-d5	9.33	82	941132	85.78	ng	0.00
41) 2,4,6-Tribromophenol	16.29	330	730093	108.77	ng	0.00
44) 2-Fluorobiphenyl	13.42	172	1998144	84.27	ng	0.00
78) Terphenyl-d14	20.15	244	2788753	101.55	ng	0.00

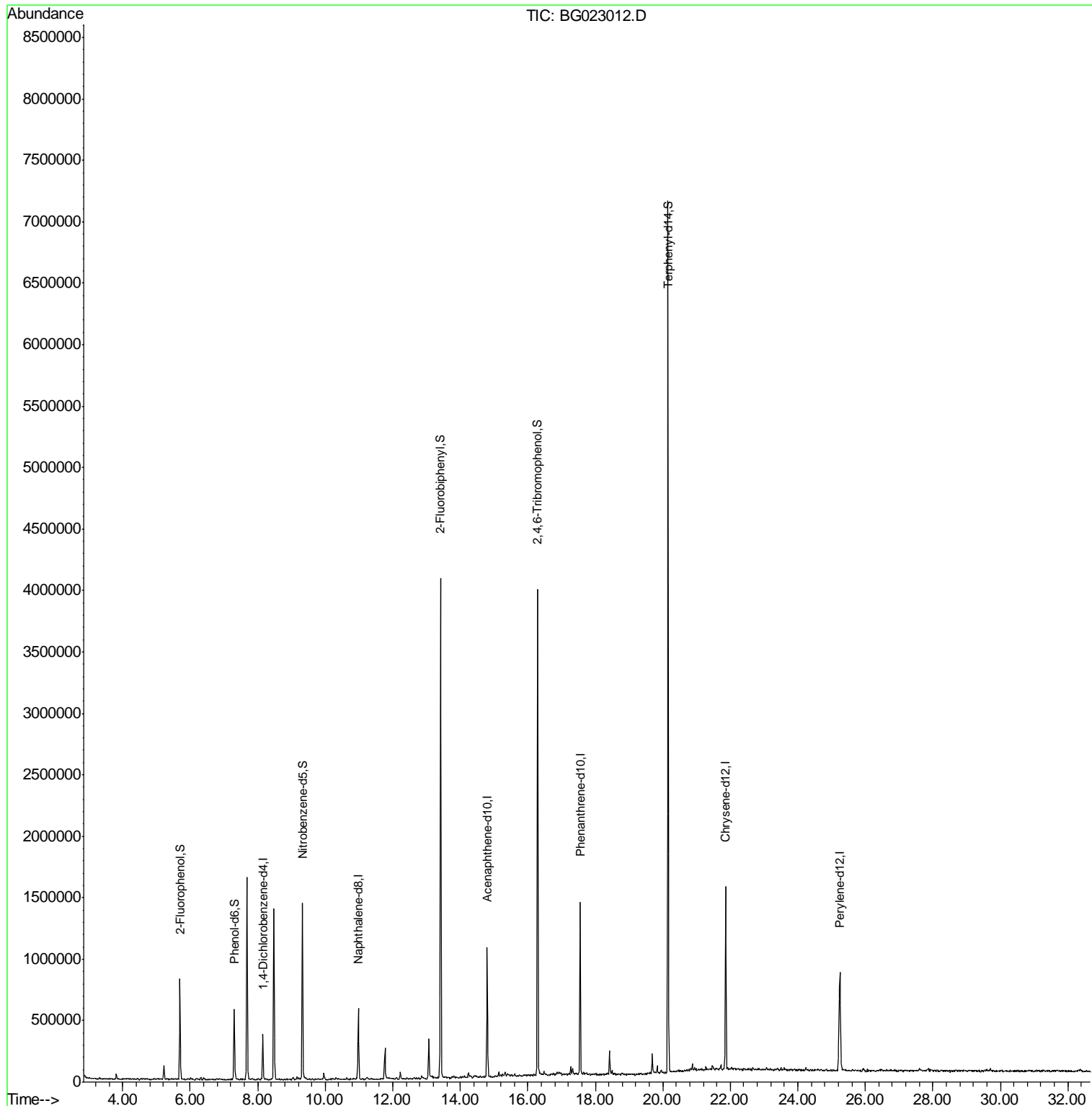
Target Compounds Qvalue

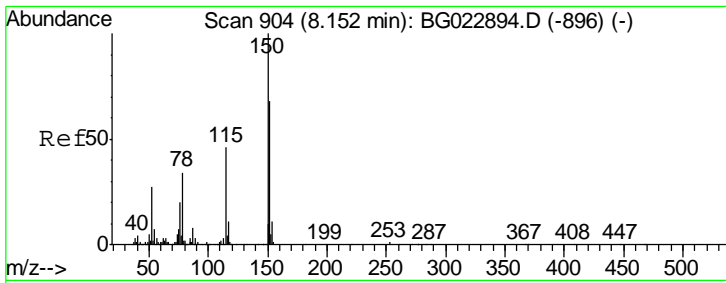
(#) = qualifier out of range (m) = manual integration (+) = signals summed

Data Path : Z:\HPCHEM1\BNA_G\DATA\BG071116\
 Data File : BG023012.D
 Acq On : 11 Jul 2016 22:38
 Operator : UM/SJ
 Sample : H3967-01
 Misc :
 ALS Vial : 10 Sample Multiplier: 1

Instrument :
 BNA_G
 ClientSampleId :
 S22-0006

Quant Time: Jul 13 01:59:55 2016
 Quant Method : Z:\HPCHEM1\BNA_G\METHODS\8270-BG070816.M
 Quant Title : ASP BNA STANDARDS FOR 5 POINT CALIBRATION
 QLast Update : Tue Jul 12 18:30:58 2016
 Response via : Initial Calibration

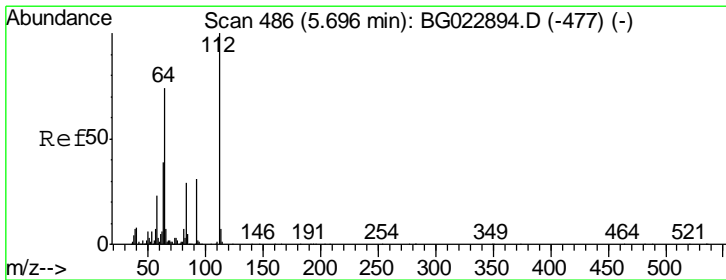
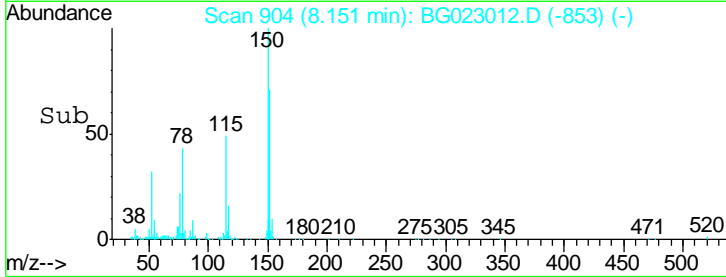
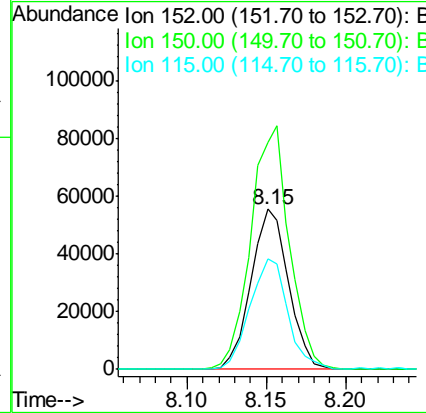
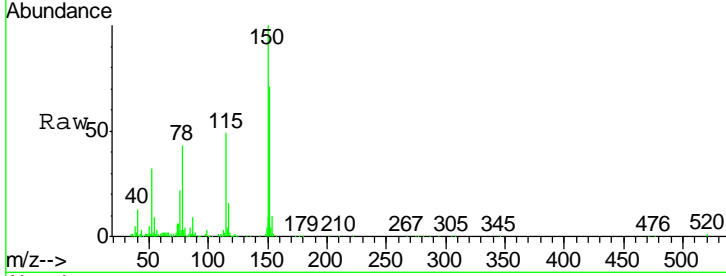




#1
 1,4-Dichlorobenzene-d4
 Concen: 20.00 ng
 RT: 8.15 min Scan# 904
 Delta R.T. -0.00 min
 Lab File: BG023012.D
 Acq: 11 Jul 2016 22:38

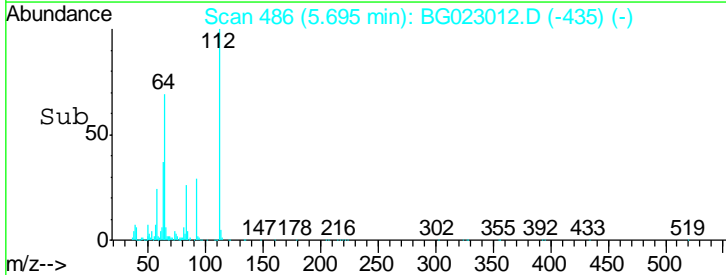
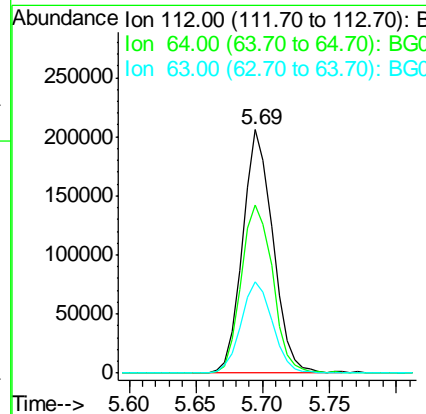
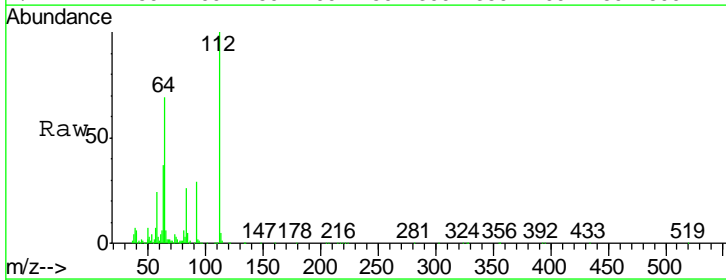
Instrument :
 BNA_G
 ClientSampled :
 S22-0006

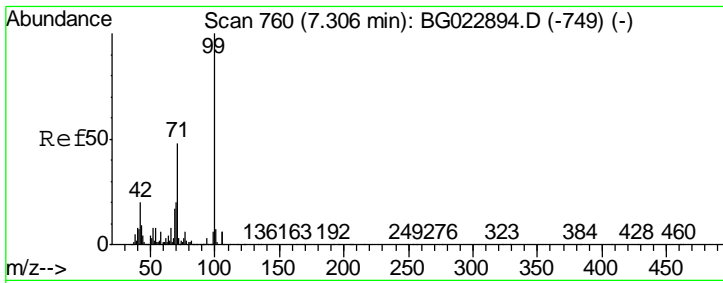
Tgt Ion	Resp	Lower	Upper
152	91140		
150	141.6	144.7	217.1#
115	69.1	64.0	96.0



#5
 2-Fluorophenol
 Concen: 58.05 ng
 RT: 5.69 min Scan# 486
 Delta R.T. -0.00 min
 Lab File: BG023012.D
 Acq: 11 Jul 2016 22:38

Tgt Ion	Resp	Lower	Upper
112	323479		
64	69.2	59.0	88.4
63	37.4	37.8	56.8#

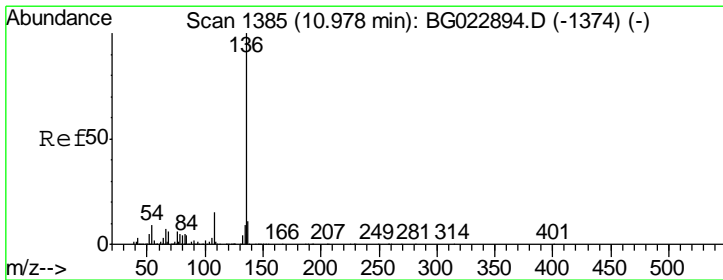
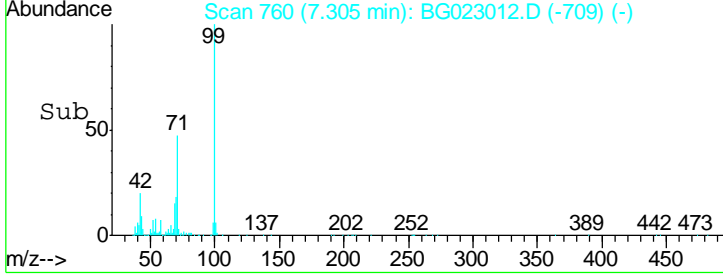
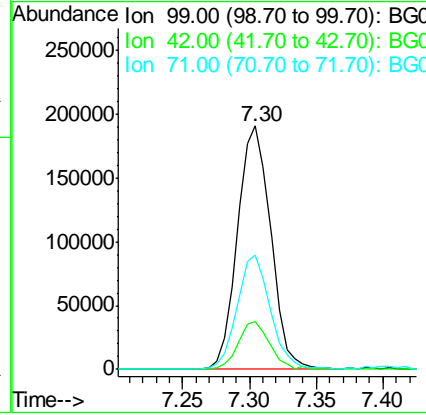
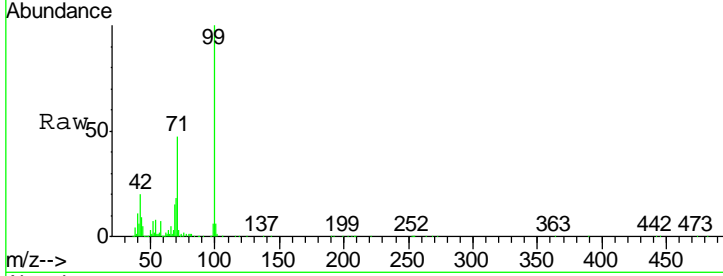




#7
 Phenol-d6
 Concen: 37.91 ng
 RT: 7.30 min Scan# 760
 Delta R.T. -0.00 min
 Lab File: BG023012.D
 Acq: 11 Jul 2016 22:38

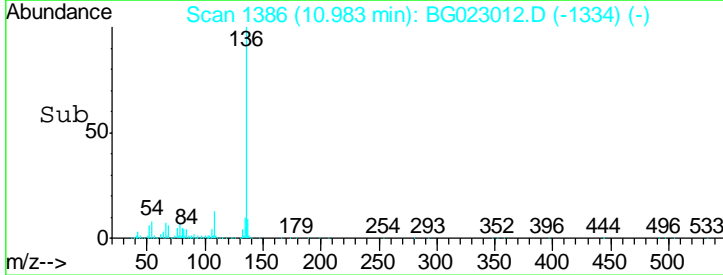
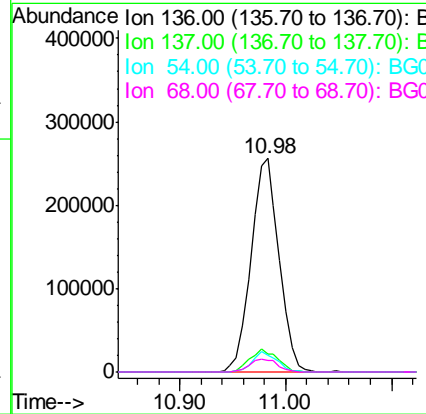
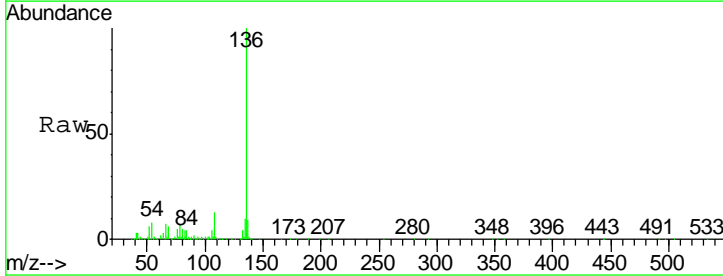
Instrument :
 BNA_G
 ClientSampled :
 S22-0006

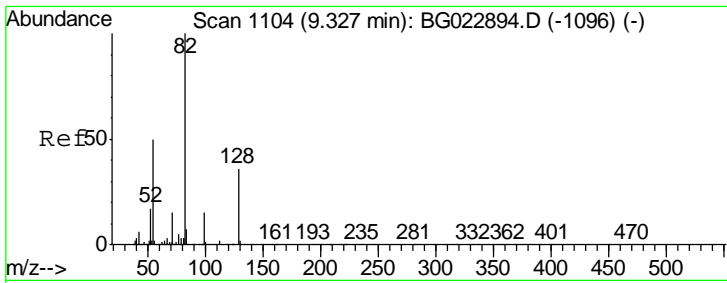
Tgt Ion	Resp	Lower	Upper
99	330851		
42	19.8	17.8	26.6
71	47.0	41.5	62.3



#21
 Naphthalene-d8
 Concen: 20.00 ng
 RT: 10.98 min Scan# 1386
 Delta R.T. 0.00 min
 Lab File: BG023012.D
 Acq: 11 Jul 2016 22:38

Tgt Ion	Resp	Lower	Upper
136	469789		
137	8.7	9.6	14.4#
54	7.7	7.3	10.9
68	5.7	5.3	7.9

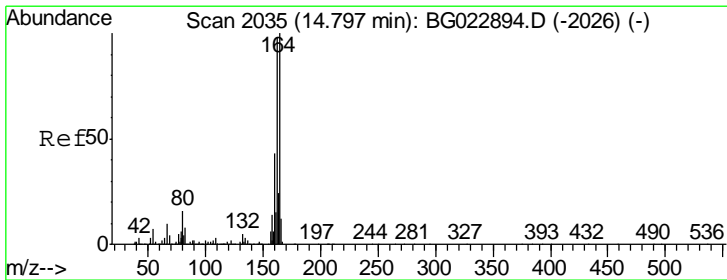
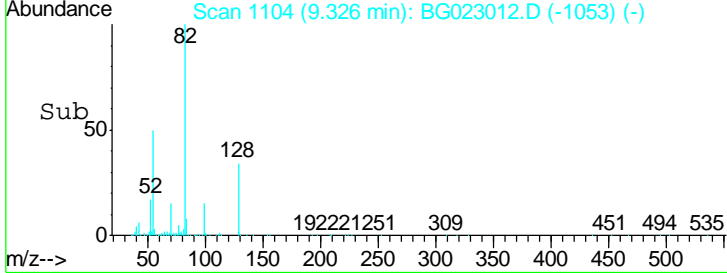
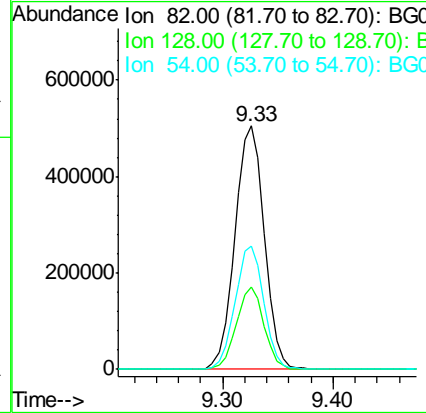
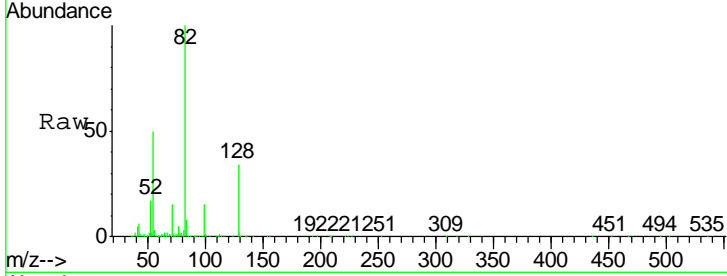




#23
 Nitrobenzene-d5
 Concen: 85.78 ng
 RT: 9.33 min Scan# 1104
 Delta R.T. -0.00 min
 Lab File: BG023012.D
 Acq: 11 Jul 2016 22:38

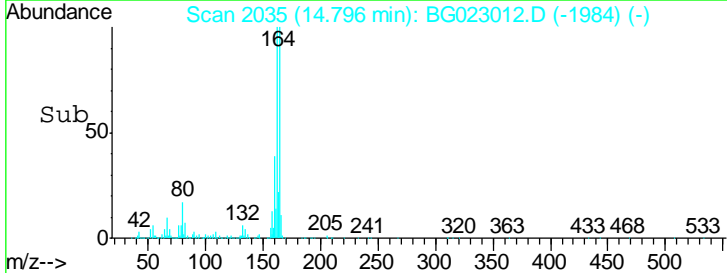
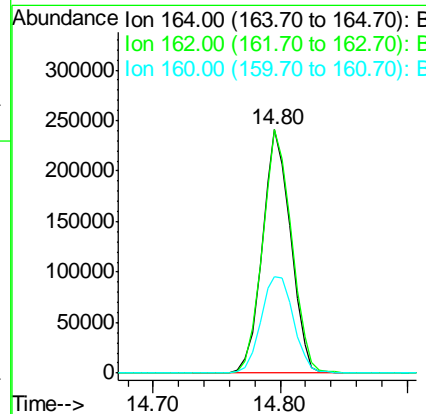
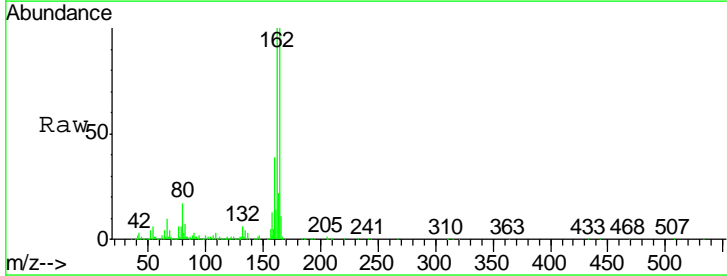
Instrument :
 BNA_G
 ClientSampled :
 S22-0006

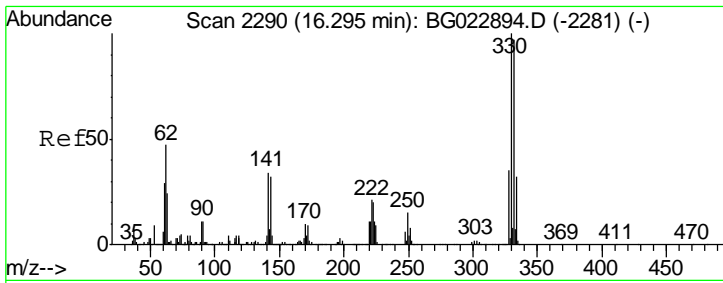
Tgt Ion	Resp	Lower	Upper
82	941132		
128	33.6	24.4	36.6
54	50.4	41.4	62.0



#38
 Acenaphthene-d10
 Concen: 20.00 ng
 RT: 14.80 min Scan# 2035
 Delta R.T. -0.00 min
 Lab File: BG023012.D
 Acq: 11 Jul 2016 22:38

Tgt Ion	Resp	Lower	Upper
164	373471		
162	100.1	87.7	131.5
160	39.4	37.2	55.8

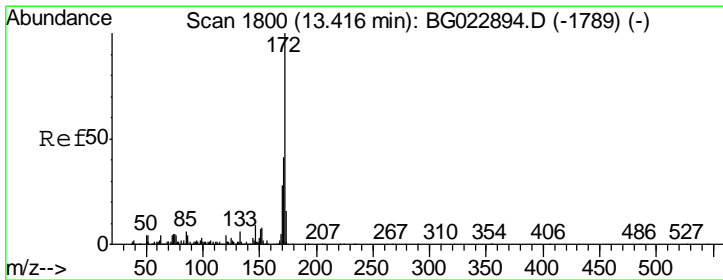
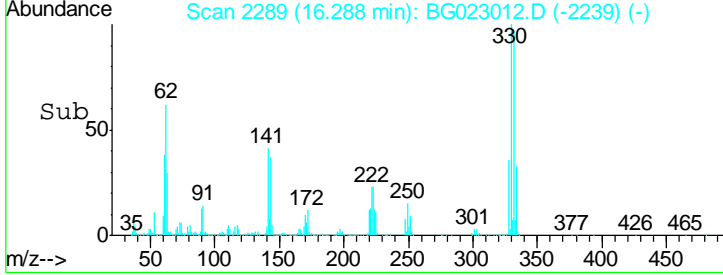
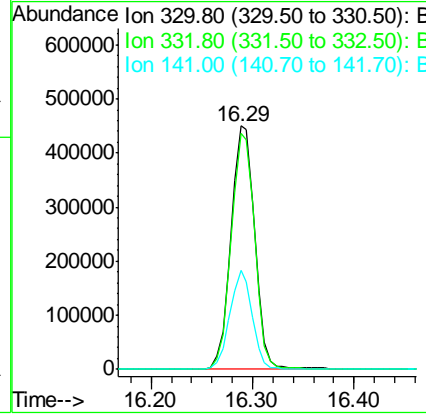
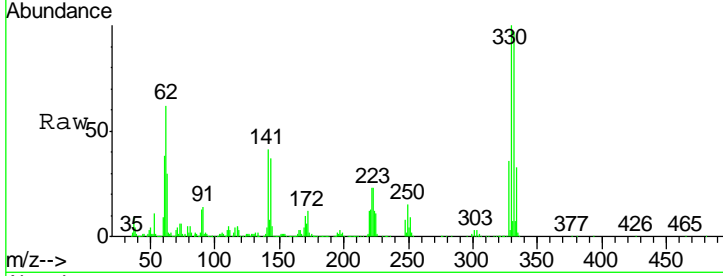




#41
 2,4,6-Tribromophenol
 Concen: 108.77 ng
 RT: 16.29 min Scan# 2289
 Delta R.T. -0.01 min
 Lab File: BG023012.D
 Acq: 11 Jul 2016 22:38

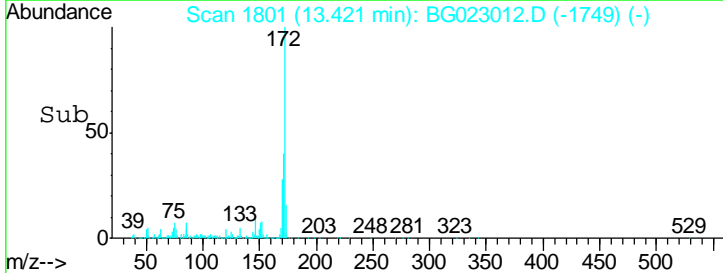
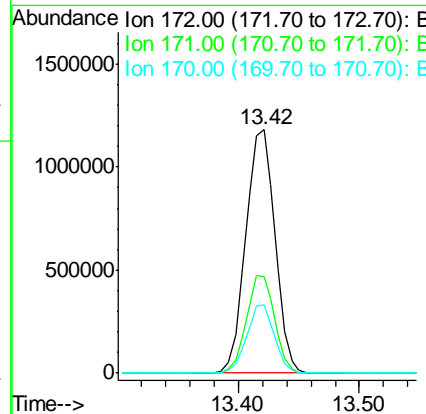
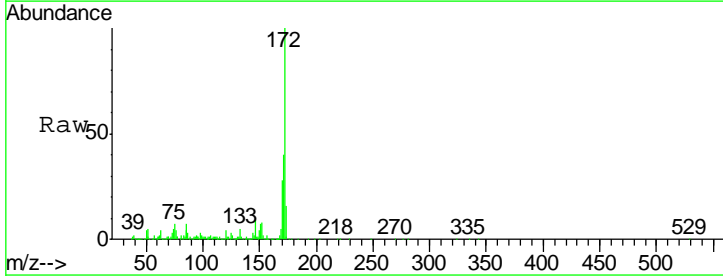
Instrument :
 BNA_G
 ClientSampled :
 S22-0006

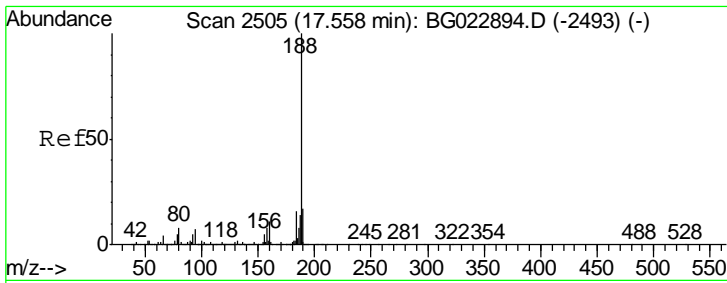
Tgt Ion	Resp	Lower	Upper
330	100		
332	96.0	77.4	116.2
141	38.4	31.7	47.5



#44
 2-Fluorobiphenyl
 Concen: 84.27 ng
 RT: 13.42 min Scan# 1801
 Delta R.T. 0.00 min
 Lab File: BG023012.D
 Acq: 11 Jul 2016 22:38

Tgt Ion	Resp	Lower	Upper
172	100		
171	39.6	31.6	47.4
170	28.0	21.3	31.9

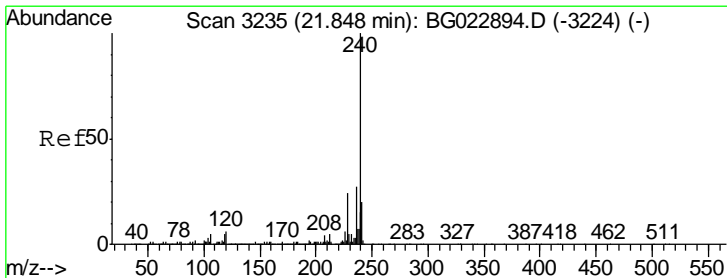
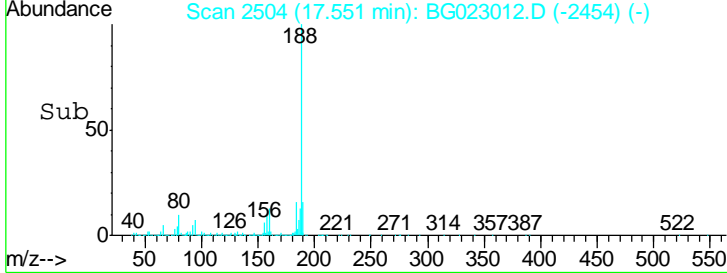
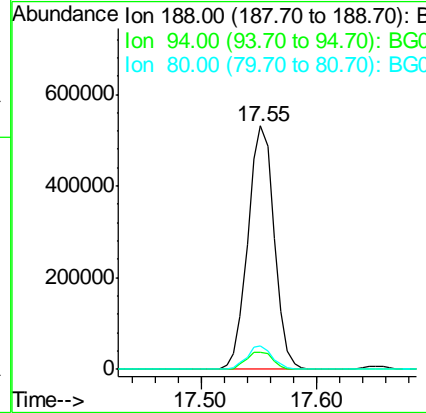
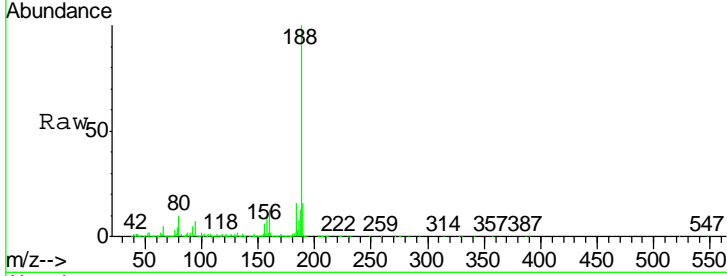




#63
 Phenanthrene-d10
 Concen: 20.00 ng
 RT: 17.55 min Scan# 2504
 Delta R.T. -0.01 min
 Lab File: BG023012.D
 Acq: 11 Jul 2016 22:38

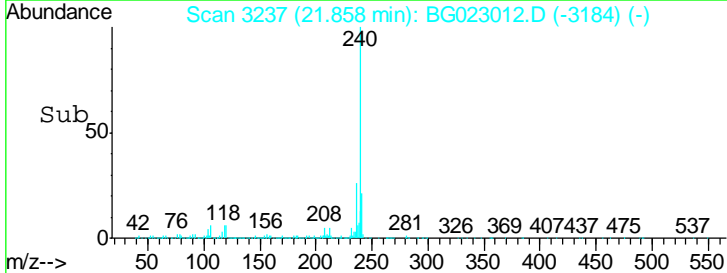
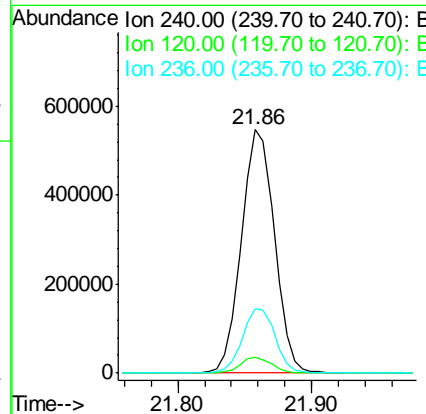
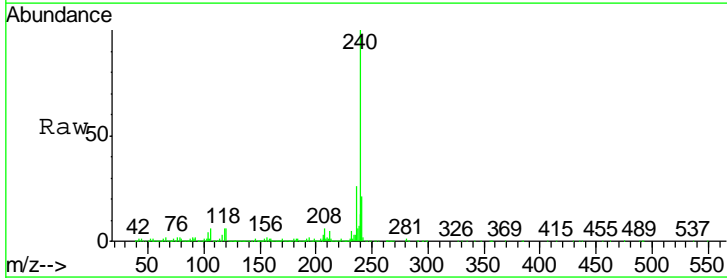
Instrument :
 BNA_G
 ClientSampled :
 S22-0006

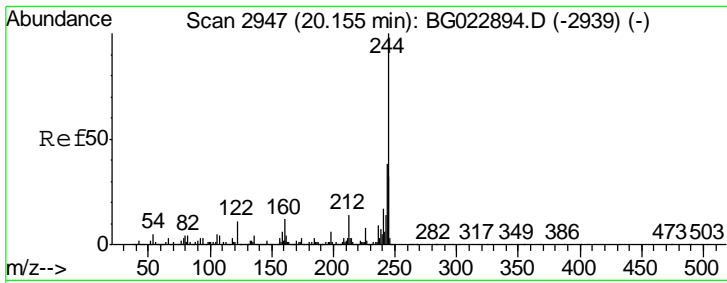
Tgt Ion	Resp	Lower	Upper
188	100		
94	7.2	5.2	7.8
80	9.6	7.2	10.8



#75
 Chrysene-d12
 Concen: 20.00 ng
 RT: 21.86 min Scan# 3237
 Delta R.T. 0.01 min
 Lab File: BG023012.D
 Acq: 11 Jul 2016 22:38

Tgt Ion	Resp	Lower	Upper
240	100		
120	6.5	4.1	6.1#
236	26.5	21.1	31.7

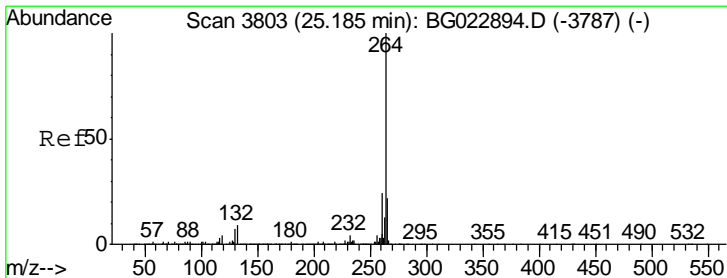
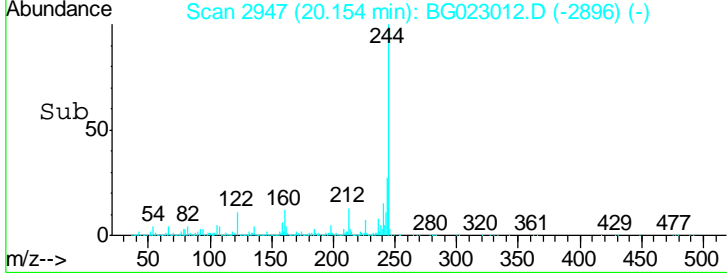
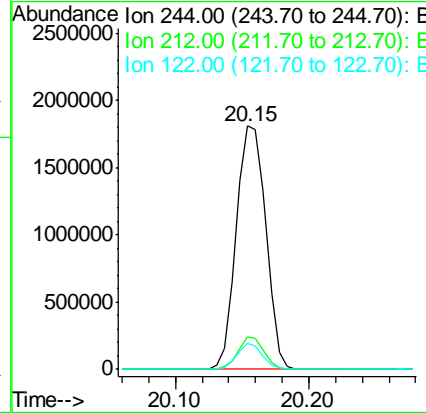
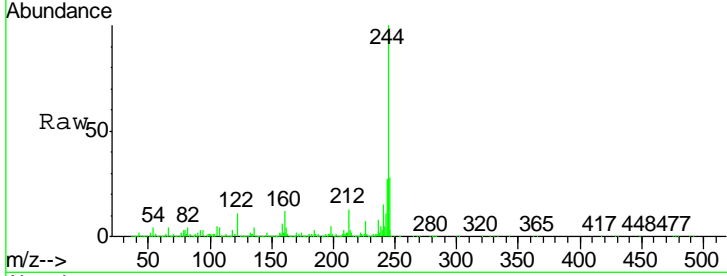




#78
 Terphenyl-d14
 Concen: 101.55 ng
 RT: 20.15 min Scan# 2947
 Delta R.T. -0.00 min
 Lab File: BG023012.D
 Acq: 11 Jul 2016 22:38

Instrument :
 BNA_G
 ClientSampled :
 S22-0006

Tgt Ion	Resp	Lower	Upper
244	100		
212	13.4	10.8	16.2
122	10.5	8.0	12.0



#86
 Perylene-d12
 Concen: 20.00 ng
 RT: 25.24 min Scan# 3813
 Delta R.T. 0.06 min
 Lab File: BG023012.D
 Acq: 11 Jul 2016 22:38

Tgt Ion	Resp	Lower	Upper
264	100		
260	25.3	18.4	27.6
265	24.2	18.9	28.3

