

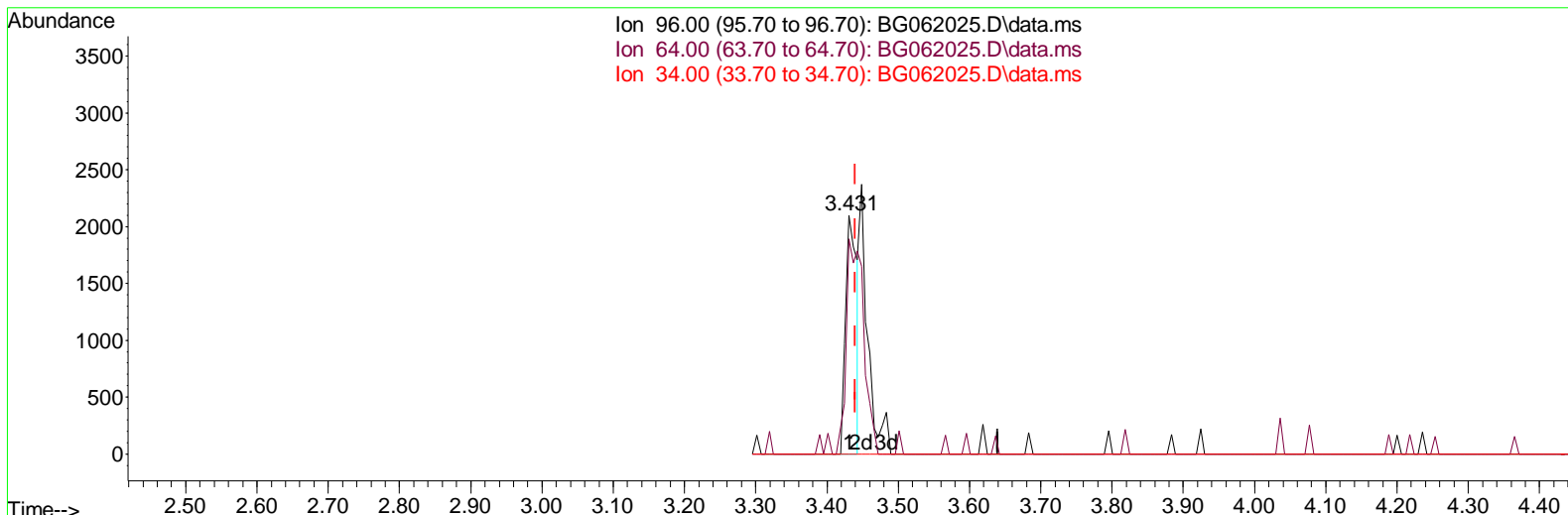
Data Path : Z:\svoasrv\HPCHEM1\BNA_G\Data\BG071124\
 Data File : BG062025.D
 Acq On : 12 Jul 2024 1:15
 Operator : MA/JU
 Sample : P3088-16
 Misc :
 ALS Vial : 20 Sample Multiplier: 1

Instrument :
 BNA_G
 ClientSampleId :
 A4D11

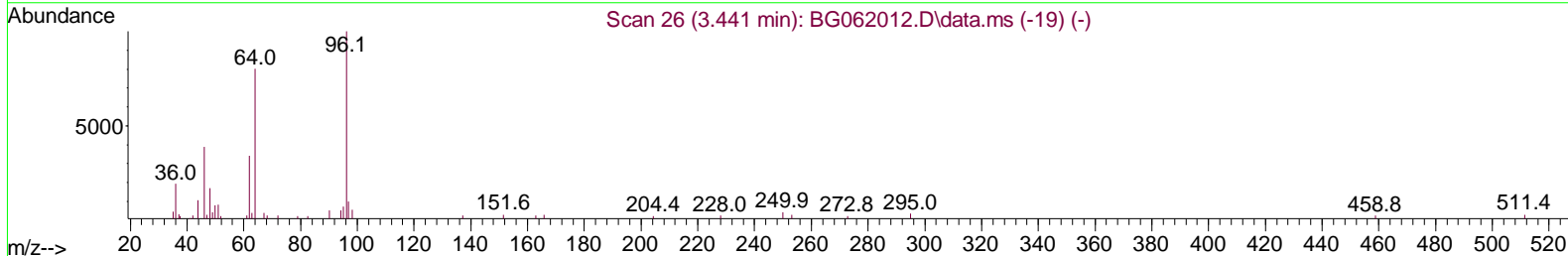
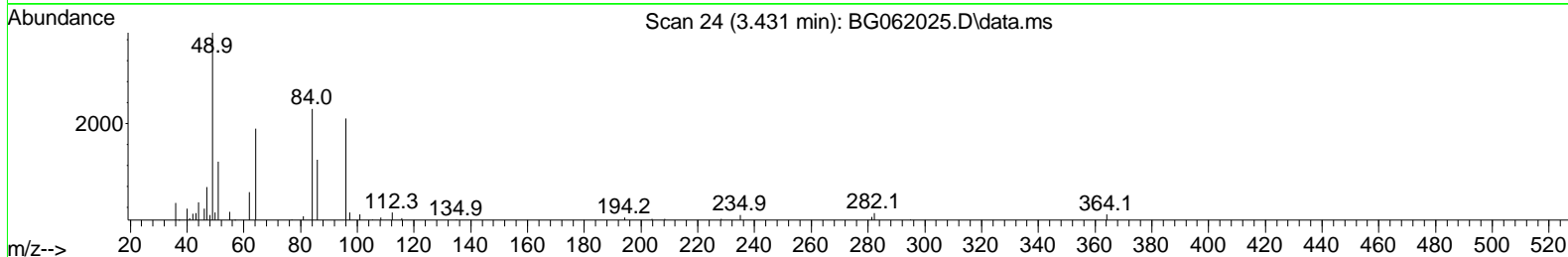
Manual Integrations APPROVED

Quant Time: Jul 12 02:44:57 2024
 Quant Method : Z:\svoasrv\HPCHEM1\BNA_G\Methods\SFAM-EPA-BG070224.MA.M
 Quant Title : SVOA CALIBRATION
 QLast Update : Thu Jul 11 12:11:32 2024
 Response via : Initial Calibration

Reviewed By :Jagrut Upadhyay 07/12/2024
 Supervised By :mohammad ahmed 07/15/2024



Ion 96.00 (95.70 to 96.70): BG062025.D\data.ms
 Ion 64.00 (63.70 to 64.70): BG062025.D\data.ms
 Ion 34.00 (33.70 to 34.70): BG062025.D\data.ms



TIC: BG062025.D\data.ms

(3) 1,4-Dioxane-d8 (S)

3.431min (-0.009) 1.57 ng/uL

| response | 2324 | |
|----------|--------|--------|
| Ion | Exp% | Act% |
| 96.00 | 100.00 | 100.00 |
| 64.00 | 104.80 | 90.23 |
| 34.00 | 0.00 | 0.00 |
| 0.00 | 0.00 | 0.00 |

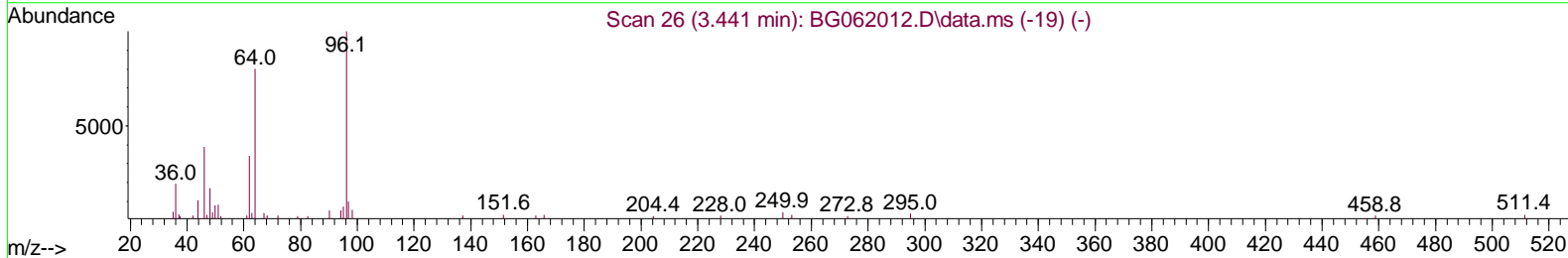
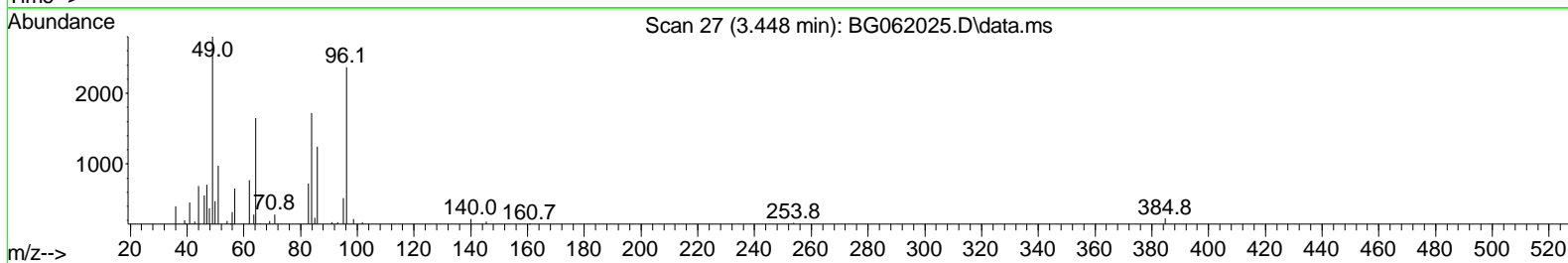
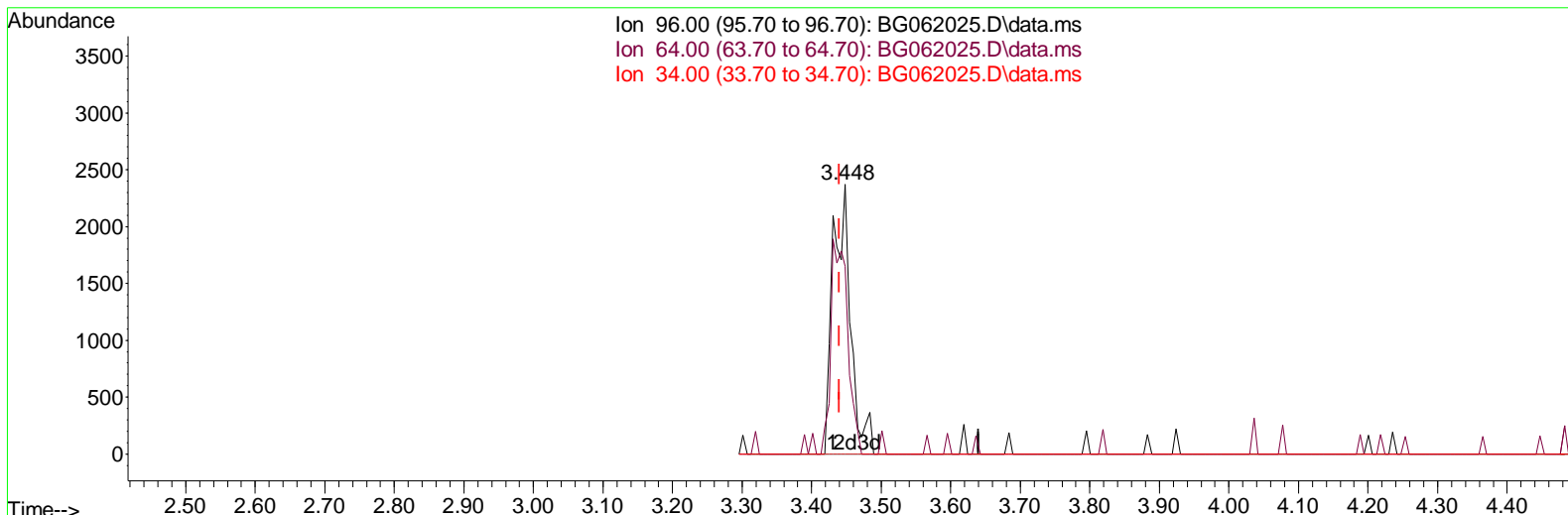
Data Path : Z:\svoasrv\HPCHEM1\BNA_G\Data\BG071124\
 Data File : BG062025.D
 Acq On : 12 Jul 2024 1:15
 Operator : MA/JU
 Sample : P3088-16
 Misc :
 ALS Vial : 20 Sample Multiplier: 1

Instrument :
 BNA_G
 ClientSampleId :
 A4D11

Manual Integrations APPROVED

Reviewed By : Jagrut Upadhyay 07/12/2024
 Supervised By : mohammad ahmed 07/15/2024

Quant Time: Jul 12 02:44:57 2024
 Quant Method : Z:\svoasrv\HPCHEM1\BNA_G\Methods\SFAM-EPA-BG070224.MA.M
 Quant Title : SVOA CALIBRATION
 QLast Update : Thu Jul 11 12:11:32 2024
 Response via : Initial Calibration



TIC: BG062025.D\data.ms

(3) 1,4-Dioxane-d8 (S)

3.448min (+ 0.008) 2.86 ng/uL m

| response | 4233 | |
|----------|--------|--------|
| Ion | Exp% | Act% |
| 96.00 | 100.00 | 100.00 |
| 64.00 | 104.80 | 69.62# |
| 34.00 | 0.00 | 0.00 |
| 0.00 | 0.00 | 0.00 |

Data Path : Z:\svoasrv\HPCHEM1\BNA_G\Data\BG071124\
 Data File : BG062025.D
 Acq On : 12 Jul 2024 1:15
 Operator : MA/JU
 Sample : P3088-16
 Misc :
 ALS Vial : 20 Sample Multiplier: 1

Instrument :
 BNA_G
ClientSampleId :
 A4D11

Manual IntegrationsAPPROVED

Reviewed By :Jagrut Upadhyay 07/12/2024
 Supervised By :mohammad ahmed 07/15/2024

Quant Time: Jul 12 03:49:24 2024
 Quant Method : Z:\svoasrv\HPCHEM1\BNA_G\Methods\SFAM-EPA-BG070224.MA.M
 Quant Title : SVOA CALI BRATION
 QLast Update : Thu Jul 11 12:11:32 2024
 Response via : Initial Calibration

| Compound | R. T. | QI on | Response | Conc | Units | Dev(Min) |
|------------------------------------|--------|-------|----------|--------|-------|----------|
| Internal Standards | | | | | | |
| 1) 1,4-Di chlorobenzene-d4 | 8.037 | 152 | 55546 | 20.000 | ng/ul | 0.00 |
| 20) Naphthalene-d8 | 10.851 | 136 | 263956 | 20.000 | ng/ul | 0.00 |
| 38) Acenaphthene-d10 | 14.670 | 164 | 184980 | 20.000 | ng/ul | 0.00 |
| 64) Phenanthrene-d10 | 17.414 | 188 | 437912 | 20.000 | ng/ul | # 0.00 |
| 79) Chrysene-d12 | 21.674 | 240 | 400285 | 20.000 | ng/ul | # 0.00 |
| 88) Perylene-d12 | 24.882 | 264 | 477192 | 20.000 | ng/ul | 0.00 |
| System Monitoring Compounds | | | | | | |
| 3) 1,4-Dioxane-d8 | 3.448 | 96 | 4233m | 2.864 | ng/uL | 0.00 |
| 4) Pyridine-d5 | 0.000 | 84 | 0d | 0.000 | ng/ul | |
| 7) Phenol-d5 | 7.197 | 99 | 110763 | 18.221 | ng/ul | 0.00 |
| 9) Bis-(2-Chloroethyl)eth... | 7.361 | 67 | 68827 | 17.880 | ng/ul | 0.00 |
| 11) 2-Chlorophenol-d4 | 7.567 | 132 | 84003 | 20.146 | ng/ul | 0.00 |
| 15) 4-Methylphenol-d8 | 8.748 | 113 | 91090 | 19.032 | ng/ul | 0.00 |
| 21) Nitrobenzene-d5 | 9.206 | 128 | 45787 | 22.808 | ng/ul | 0.00 |
| 24) 2-Nitrophenol-d4 | 9.929 | 143 | 42905 | 18.715 | ng/ul | 0.00 |
| 28) 2,4-Dichlorophenol-d3 | 10.470 | 165 | 89439 | 20.227 | ng/ul | 0.00 |
| 31) 4-Chloroaniline-d4 | 10.987 | 131 | 19232 | 2.996 | ng/ul | 0.00 |
| 46) Dimethylphthalate-d6 | 14.071 | 166 | 324631 | 21.346 | ng/ul | 0.00 |
| 49) Acenaphthylene-d8 | 14.365 | 160 | 381005 | 23.959 | ng/ul | 0.00 |
| 54) 4-Nitrophenol-d4 | 14.870 | 143 | 15428 | 6.353 | ng/ul | 0.00 |
| 60) Fluorene-d10 | 15.663 | 176 | 299082 | 23.361 | ng/ul | 0.00 |
| 65) 4,6-Dinitro-2-methylph... | 15.775 | 200 | 31959 | 13.896 | ng/ul | 0.00 |
| 73) Anthracene-d10 | 17.514 | 188 | 477458 | 23.353 | ng/ul | 0.00 |
| 81) Pyrene-d10 | 19.794 | 212 | 547061 | 23.235 | ng/ul | 0.00 |
| 92) Benzo(a)pyrene-d12 | 24.659 | 264 | 555019 | 23.452 | ng/ul | 0.00 |

Target Compounds Qvalue

(#) = qualifier out of range (m) = manual integration (+) = signals summed

Data Path : Z:\svoasrv\HPCHEM1\BNA_G\Data\BG071124\
 Data File : BG062025.D
 Acq On : 12 Jul 2024 1:15
 Operator : MA/JU
 Sample : P3088-16
 Misc :
 ALS Vial : 20 Sample Multiplier: 1

Instrument :
 BNA_G
ClientSampleId :
 A4D11

Manual Integrations APPROVED

Reviewed By : Jagrut Upadhyay 07/12/2024
 Supervised By : mohammad ahmed 07/15/2024

Quant Time: Jul 12 03:49:24 2024
 Quant Method : Z:\svoasrv\HPCHEM1\BNA_G\Methods\SFAM-EPA-BG070224.MA.M
 Quant Title : SVOA CALIBRATION
 QLast Update : Thu Jul 11 12:11:32 2024
 Response via : Initial Calibration

