

Data Path : Z:\svoasrv\HPCHEM1\BNA_G\Data\BG071124\
 Data File : BG062025.D
 Acq On : 12 Jul 2024 1:15
 Operator : MA/JU
 Sample : P3088-16
 Misc :
 ALS Vial : 20 Sample Multiplier: 1

Instrument :
 BNA_G
 ClientSampleId :
 A4D11

Integration Parameters: LSCINT.P

Integrator: RTE
 Smoothing : OFF
 Sampling : 1
 Start Thrs: 0.2
 Stop Thrs : 0

Filtering: 5
 Min Area: 0.1 % of largest Peak
 Max Peaks: 100
 Peak Location: TOP

If leading or trailing edge < 100 prefer < Baseline drop else tangent >
 Peak separation: 5

Method : Z:\svoasrv\HPCHEM1\BNA_G\Methods\SFAM-EPA-BG070224.MA.M
 Title : SVOA CALIBRATION

Signal : TIC: BG062025.D\data.ms

peak #	R.T. min	first scan	max scan	last scan	PK TY	peak height	corr. area	corr. % max.	% of total
1	3.442	23	26	32	rVB6	12225	18911	0.78%	0.082%
2	3.871	95	99	100	rVB3	3505	3774	0.16%	0.016%
3	3.895	100	103	105	rBV4	3584	5143	0.21%	0.022%
4	4.200	153	155	158	rVB3	7055	6016	0.25%	0.026%
5	4.565	213	217	219	rBV3	4359	4862	0.20%	0.021%
6	5.440	365	366	369	rVB2	4934	3756	0.15%	0.016%
7	5.464	369	370	375	rBV2	6073	7118	0.29%	0.031%
8	5.734	412	416	419	rBV2	3275	4602	0.19%	0.020%
9	5.987	456	459	461	rBV3	5302	5056	0.21%	0.022%
10	6.122	479	482	484	rVB3	4155	4658	0.19%	0.020%
11	6.304	509	513	515	rBV3	3052	4180	0.17%	0.018%
12	6.421	528	533	534	rVB3	3509	4193	0.17%	0.018%
13	6.991	627	630	634	rBV3	3679	4911	0.20%	0.021%
14	7.079	643	645	647	rBV3	3572	3542	0.15%	0.015%
15	7.197	659	665	676	rVB2	243222	409120	16.85%	1.766%
16	7.361	685	693	700	rBV	149097	252276	10.39%	1.089%
17	7.567	721	728	735	rBV	222937	383149	15.78%	1.654%
18	7.620	735	737	743	rVB3	6738	9809	0.40%	0.042%
19	8.037	802	808	815	rBV	245425	408881	16.84%	1.765%
20	8.231	838	841	843	rVB2	3614	4418	0.18%	0.019%
21	8.454	876	879	881	rBV3	4256	5739	0.24%	0.025%
22	8.495	883	886	888	rBV2	5084	3634	0.15%	0.016%
23	8.742	919	928	938	rBV	280437	500285	20.61%	2.159%
24	9.206	996	1007	1013	rBV	255122	438272	18.06%	1.892%
25	9.353	1028	1032	1035	rBV3	6659	9574	0.39%	0.041%
26	9.388	1037	1038	1042	rVB2	5838	5630	0.23%	0.024%
27	9.441	1042	1047	1049	rBV3	3384	5630	0.23%	0.024%
28	9.747	1095	1099	1107	rVB3	22916	38344	1.58%	0.166%
29	9.929	1123	1130	1138	rVB2	195190	340573	14.03%	1.470%
30	10.117	1159	1162	1163	rBV3	4565	3848	0.16%	0.017%
31	10.470	1215	1222	1232	rBV2	300708	529298	21.81%	2.285%
32	10.622	1242	1248	1249	rBV3	2974	4814	0.20%	0.021%
33	10.681	1254	1258	1260	rBV2	3696	4511	0.19%	0.019%
34	10.851	1280	1287	1294	rVB	353727	619460	25.52%	2.674%
35	10.922	1297	1299	1304	rBV4	4612	5667	0.23%	0.024%
36	10.987	1304	1310	1320	rVB2	47806	86787	3.58%	0.375%

Data Path : Z:\svoasrv\HPCHEM1\BNA_G\Data\BG071124\
 Data File : BG062025.D
 Acq On : 12 Jul 2024 1:15
 Operator : MA/JU
 Sample : P3088-16
 Misc :
 ALS Vial : 20 Sample Multiplier: 1

Instrument :
 BNA_G
 ClientSampleId :
 A4D11

Integration Parameters: LSCINT.P

Integrator: RTE
 Smoothing : OFF Filtering: 5
 Sampling : 1 Min Area: 0.1 % of largest Peak
 Start Thrs: 0.2 Max Peaks: 100
 Stop Thrs : 0 Peak Location: TOP

If leading or trailing edge < 100 prefer < Baseline drop else tangent >
 Peak separation: 5

Method : Z:\svoasrv\HPCHEM1\BNA_G\Methods\SFAM-EPA-BG070224.MA.M
 Title : SVOA CALIBRATION

37	11.128	1333	1334	1340	rBV2	3541	4754	0.20%	0.021%
38	11.239	1350	1353	1356	rBV2	3221	4177	0.17%	0.018%
39	11.333	1366	1369	1371	rBV3	4419	5639	0.23%	0.024%
40	11.368	1371	1375	1381	rVB2	15477	24541	1.01%	0.106%
41	11.586	1406	1412	1421	rBV2	108297	209616	8.64%	0.905%
42	12.015	1482	1485	1487	rBV2	4136	4187	0.17%	0.018%
43	12.314	1532	1536	1539	rBV3	3848	6356	0.26%	0.027%
44	12.356	1542	1543	1548	rBV3	2465	3864	0.16%	0.017%
45	12.420	1551	1554	1555	rBV2	4818	4903	0.20%	0.021%
46	12.655	1591	1594	1597	rVB2	3916	5214	0.21%	0.023%
47	12.802	1615	1619	1620	rBV4	3571	4243	0.17%	0.018%
48	13.019	1654	1656	1659	rBV2	4023	4451	0.18%	0.019%
49	13.525	1741	1742	1745	rBV2	4109	3849	0.16%	0.017%
50	13.866	1798	1800	1806	rVB3	6213	5850	0.24%	0.025%
51	14.071	1828	1835	1844	rBV	570052	806143	33.21%	3.480%
52	14.195	1854	1856	1858	rVB2	5233	4209	0.17%	0.018%
53	14.212	1858	1859	1861	rBV	5832	4958	0.20%	0.021%
54	14.294	1870	1873	1878	rBV4	8714	17263	0.71%	0.075%
55	14.365	1879	1885	1892	rVB	591714	942873	38.84%	4.070%
56	14.518	1905	1911	1914	rBV5	4470	8662	0.36%	0.037%
57	14.553	1914	1917	1919	rVB4	5587	5345	0.22%	0.023%
58	14.670	1931	1937	1944	rBV	587738	879783	36.24%	3.798%
59	14.870	1964	1971	1979	rBV2	148286	279939	11.53%	1.208%
60	15.076	2001	2006	2010	rBV7	5543	10922	0.45%	0.047%
61	15.446	2064	2069	2071	rBV3	5224	7812	0.32%	0.034%
62	15.505	2077	2079	2083	rBV3	2857	3565	0.15%	0.015%
63	15.663	2098	2106	2111	rBV	758172	1154342	47.56%	4.983%
64	15.775	2120	2125	2133	rBV2	186879	283645	11.69%	1.224%
65	15.834	2133	2135	2139	rVB	4982	4764	0.20%	0.021%
66	15.945	2153	2154	2156	rBV2	5255	3547	0.15%	0.015%
67	16.157	2187	2190	2192	rBV4	3191	4118	0.17%	0.018%
68	16.192	2193	2196	2200	rVB2	11313	13779	0.57%	0.059%
69	16.515	2249	2251	2252	rVV2	8247	4664	0.19%	0.020%
70	16.533	2252	2254	2258	rVV3	7878	10015	0.41%	0.043%
71	16.580	2258	2262	2270	rVB4	12444	23394	0.96%	0.101%
72	17.156	2356	2360	2362	rVB5	9402	10726	0.44%	0.046%
73	17.414	2398	2404	2410	rBV	738521	1111180	45.78%	4.796%
74	17.514	2415	2421	2427	rVB2	830400	1253235	51.63%	5.410%
75	17.784	2463	2467	2469	rBV5	14718	21442	0.88%	0.093%
76	17.890	2483	2485	2488	rVB3	16168	14424	0.59%	0.062%

Data Path : Z:\svoasrv\HPCHEM1\BNA_G\Data\BG071124\
 Data File : BG062025.D
 Acq On : 12 Jul 2024 1:15
 Operator : MA/JU
 Sample : P3088-16
 Misc :
 ALS Vial : 20 Sample Multiplier: 1

Instrument :
 BNA_G
 ClientSampleId :
 A4D11

Integration Parameters: LSCINT.P

Integrator: RTE
 Smoothing : OFF Filtering: 5
 Sampling : 1 Min Area: 0.1 % of largest Peak
 Start Thrs: 0.2 Max Peaks: 100
 Stop Thrs : 0 Peak Location: TOP

If leading or trailing edge < 100 prefer < Baseline drop else tangent >
 Peak separation: 5

Method : Z:\svoasrv\HPCHEM1\BNA_G\Methods\SFAM-EPA-BG070224.MA.M
 Title : SVOA CALIBRATION

77	17.914	2488	2489	2492	rVV3	5870	6675	0.27%	0.029%
78	17.943	2492	2494	2497	rVB3	7797	6605	0.27%	0.029%
79	18.067	2511	2515	2520	rVB4	35881	47047	1.94%	0.203%
80	18.290	2549	2553	2558	rBV6	49552	78977	3.25%	0.341%
81	18.578	2599	2602	2605	rBV2	21625	26453	1.09%	0.114%
82	18.777	2634	2636	2639	rBV4	8383	8894	0.37%	0.038%
83	19.206	2706	2709	2713	rBV	71158	80861	3.33%	0.349%
84	19.289	2720	2723	2728	rVB2	53365	66270	2.73%	0.286%
85	19.430	2744	2747	2748	rBV3	16136	16668	0.69%	0.072%
86	19.494	2755	2758	2762	rVB	63156	73451	3.03%	0.317%
87	19.794	2803	2809	2819	rBV	1037814	1526922	62.90%	6.591%
88	20.287	2889	2893	2895	rBV4	91175	128066	5.28%	0.553%
89	20.311	2895	2897	2901	rVB	156823	167358	6.89%	0.722%
90	20.804	2979	2981	2985	rVB2	82406	85601	3.53%	0.369%
91	20.987	3010	3012	3016	rVB4	71699	83269	3.43%	0.359%
92	21.304	3061	3066	3079	rBV	1307228	2100262	86.52%	9.066%
93	21.674	3123	3129	3134	rBV2	686764	1102867	45.43%	4.760%
94	21.862	3157	3161	3166	rBV3	127748	205082	8.45%	0.885%
95	22.097	3197	3201	3210	rVB3	147987	207970	8.57%	0.898%
96	22.485	3259	3267	3281	rBV2	1160333	2427370	100.00%	10.478%
97	23.495	3435	3439	3452	rVB4	161568	322819	13.30%	1.393%
98	23.948	3510	3516	3522	rBV	186113	377154	15.54%	1.628%
99	24.659	3630	3637	3647	rVB	543680	1387590	57.16%	5.989%
100	24.882	3668	3675	3685	rVB	486536	1306032	53.80%	5.637%

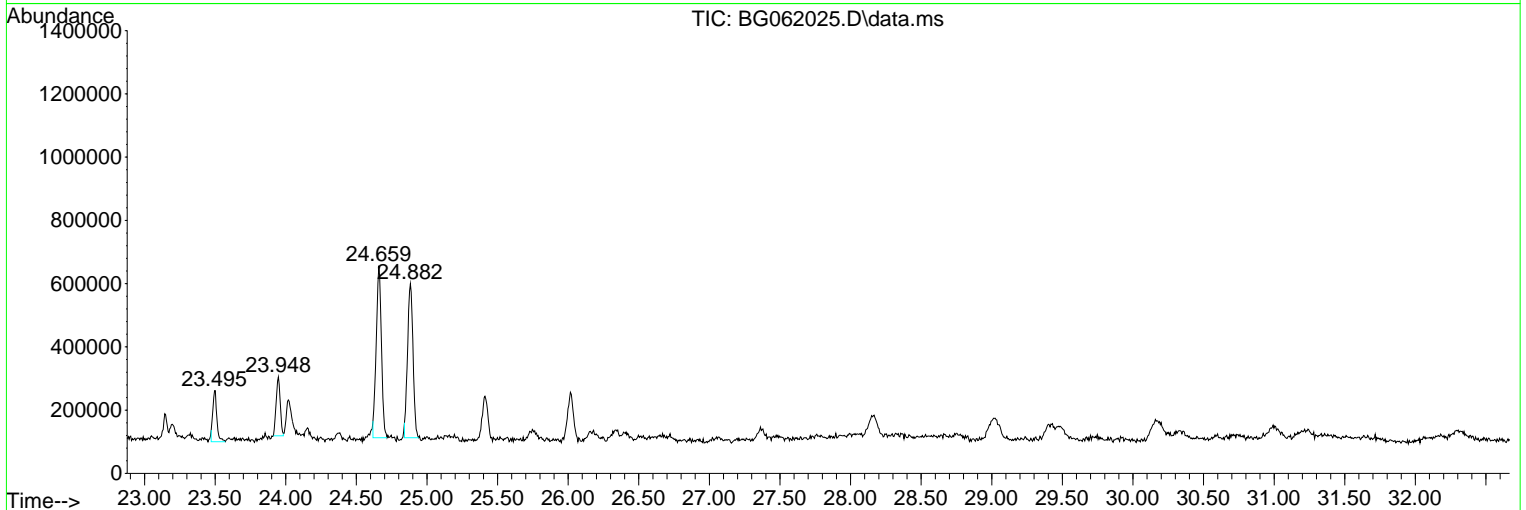
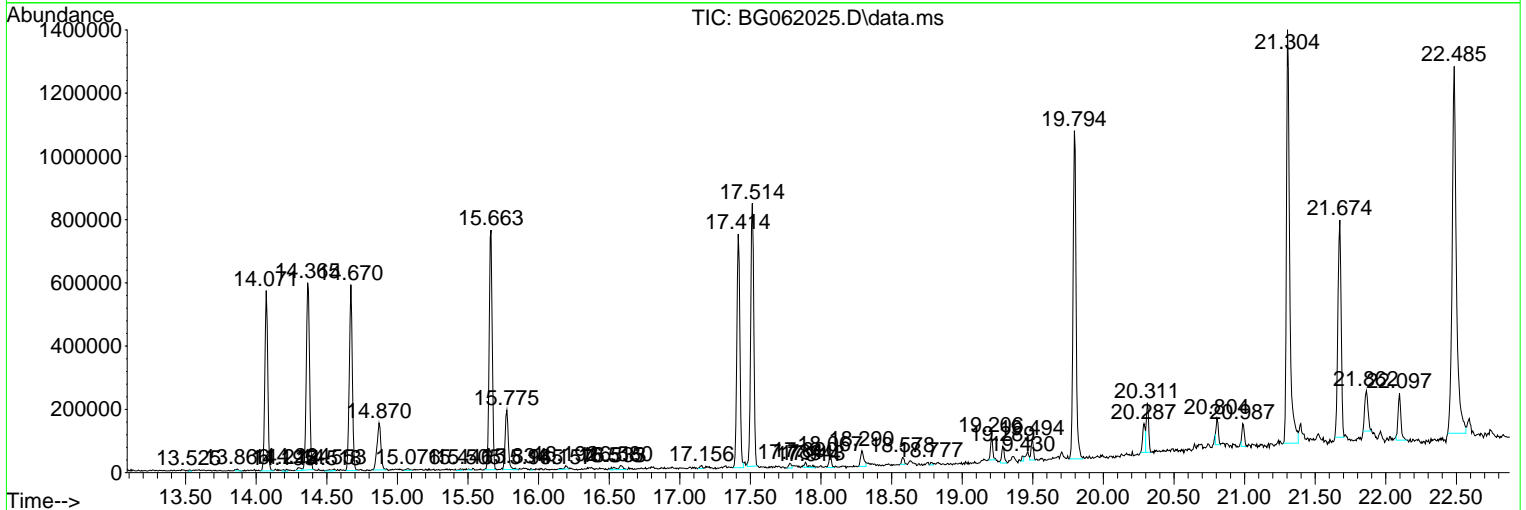
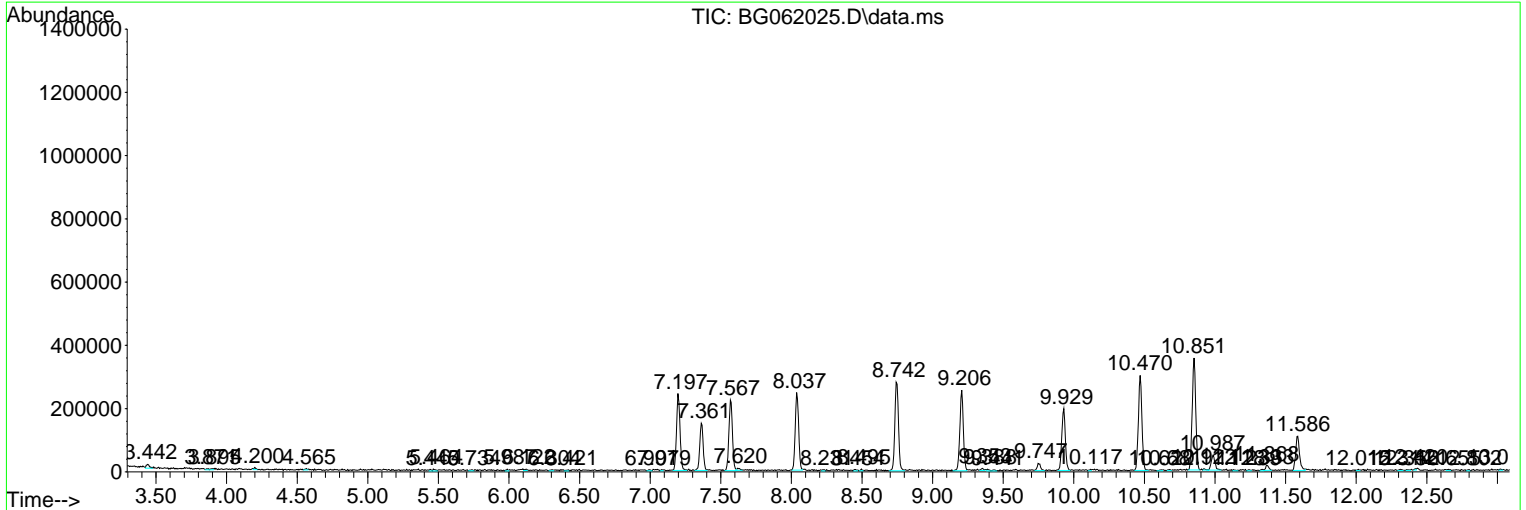
Sum of corrected areas: 23167097

Data Path : Z:\svoasrv\HPCHEM1\BNA_G\Data\BG071124\
 Data File : BG062025.D
 Acq On : 12 Jul 2024 1:15
 Operator : MA/JU
 Sample : P3088-16
 Misc :
 ALS Vial : 20 Sample Multiplier: 1

Instrument :
 BNA_G
ClientSampleId :
 A4D11

Quant Method : Z:\svoasrv\HPCHEM1\BNA_G\Methods\SFAM-EPA-BG070224.MA.M
 Quant Title : SVOA CALIBRATION

TIC Library : C:\DATABASE\NIST20.L
 TIC Integration Parameters: LSCINT.P



Data Path : Z:\svoasrv\HPCHEM1\BNA_G\Data\BG071124\
 Data File : BG062025.D
 Acq On : 12 Jul 2024 1:15
 Operator : MA/JU
 Sample : P3088-16
 Misc :
 ALS Vial : 20 Sample Multiplier: 1

Instrument :
 BNA_G
 ClientSampleId :
 A4D11

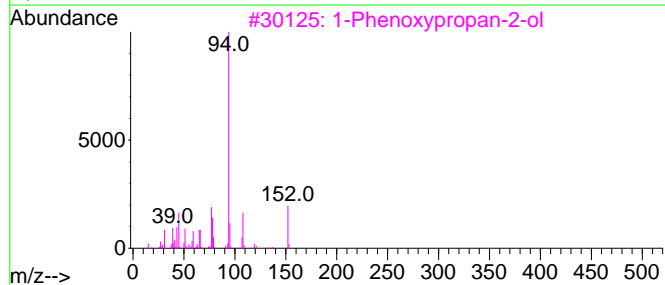
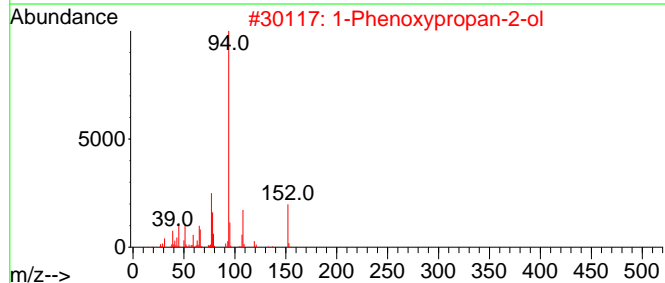
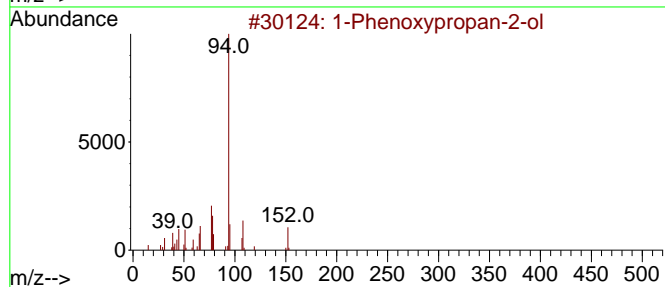
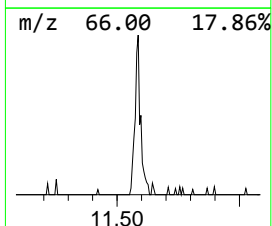
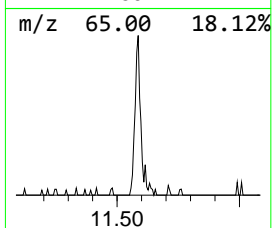
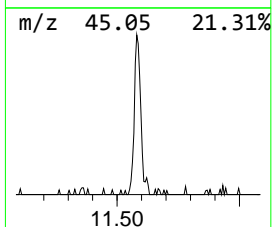
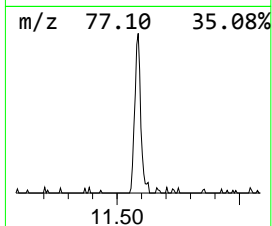
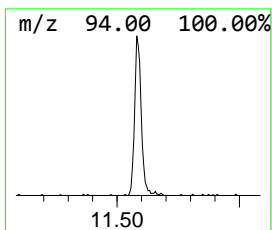
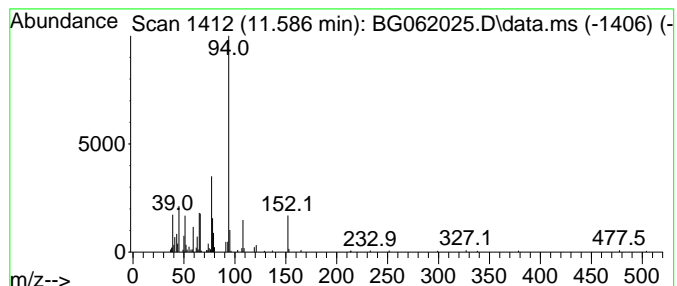
Quant Method : Z:\svoasrv\HPCHEM1\BNA_G\Methods\SFAM-EPA-BG070224.MA.M
 Quant Title : SVOA CALIBRATION

TIC Library : C:\DATABASE\NIST20.L
 TIC Integration Parameters: LSCINT.P

 Peak Number 1 1-Phenoxypropan-2-ol Concentration Rank 3

R.T.	EstConc	Area	Relative to ISTD	R.T.
11.586	6.77 ng/ul	209616	Naphthalene-d8	10.851

Hit#	of	5	Tentative ID	MW	MolForm	CAS#	Qual
1			1-Phenoxypropan-2-ol	152	C9H12O2	000770-35-4	91
2			1-Phenoxypropan-2-ol	152	C9H12O2	000770-35-4	91
3			1-Phenoxypropan-2-ol	152	C9H12O2	000770-35-4	90
4			1-Phenoxypropan-2-ol	152	C9H12O2	000770-35-4	87
5			1-Propanol, 3-phenoxy-	152	C9H12O2	006180-61-6	72



Data Path : Z:\svoasrv\HPCHEM1\BNA_G\Data\BG071124\
 Data File : BG062025.D
 Acq On : 12 Jul 2024 1:15
 Operator : MA/JU
 Sample : P3088-16
 Misc :
 ALS Vial : 20 Sample Multiplier: 1

Instrument :
 BNA_G
 ClientSampleId :
 A4D11

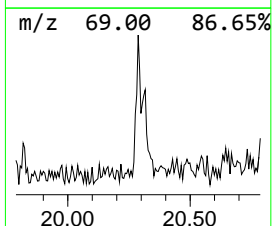
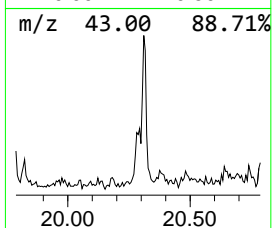
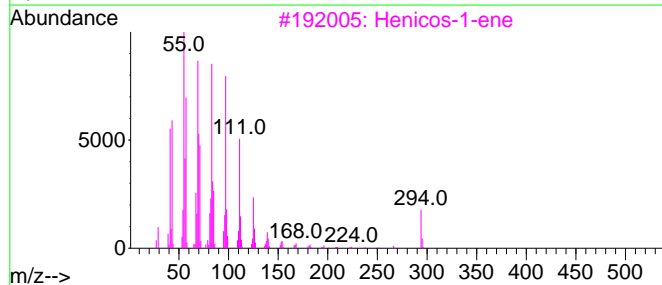
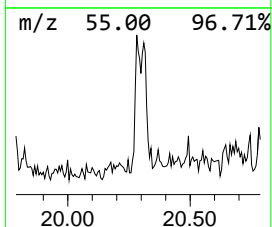
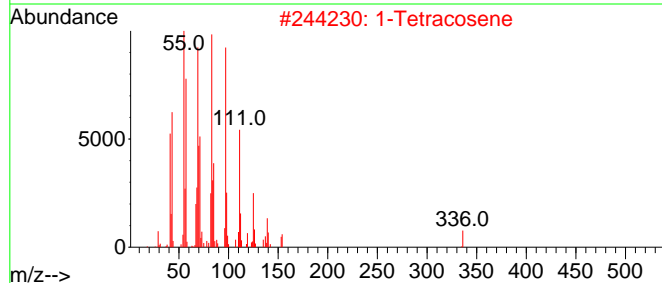
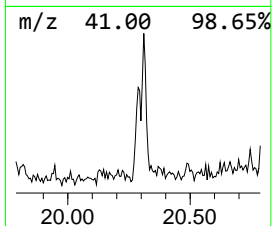
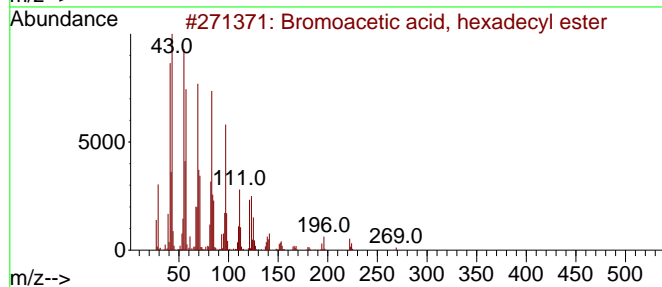
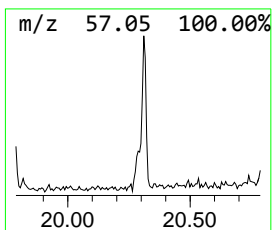
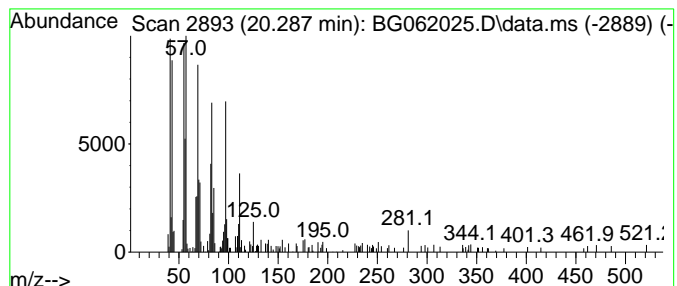
Quant Method : Z:\svoasrv\HPCHEM1\BNA_G\Methods\SFAM-EPA-BG070224.MA.M
 Quant Title : SVOA CALIBRATION

TIC Library : C:\DATABASE\NIST20.L
 TIC Integration Parameters: LSCINT.P

 Peak Number 2 Bromoacetic acid, hexadecyl... Concentration Rank 9

R.T.	EstConc	Area	Relative to ISTD	R.T.
20.287	2.32 ng/ul	128066	Chrysene-d12	21.674

Hit#	of 5	Tentative ID	MW	MolForm	CAS#	Qual
1		Bromoacetic acid, hexadecyl ester	362	C18H35BrO2	005454-48-8	91
2		1-Tetracosene	336	C24H48	010192-32-2	87
3		Henicos-1-ene	294	C21H42	001599-68-4	87
4		Cyclotetracosane	336	C24H48	000297-03-0	78
5		Cyclodocosane, ethyl-	336	C24H48	1000151-22-6	68



Data Path : Z:\svoasrv\HPCHEM1\BNA_G\Data\BG071124\
 Data File : BG062025.D
 Acq On : 12 Jul 2024 1:15
 Operator : MA/JU
 Sample : P3088-16
 Misc :
 ALS Vial : 20 Sample Multiplier: 1

Instrument :
 BNA_G
 ClientSampleId :
 A4D11

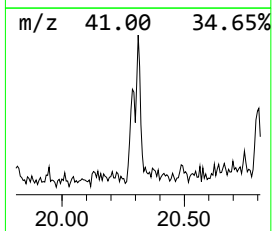
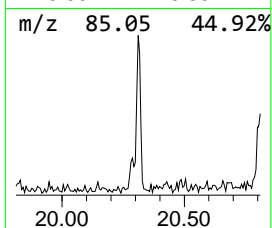
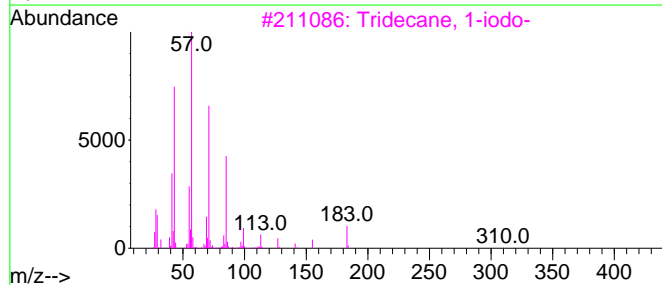
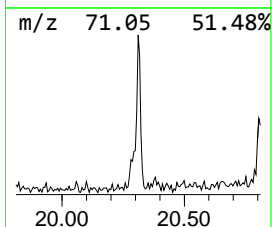
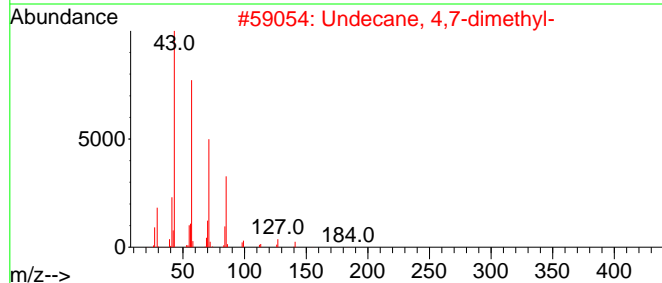
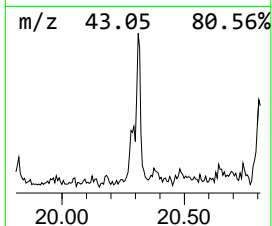
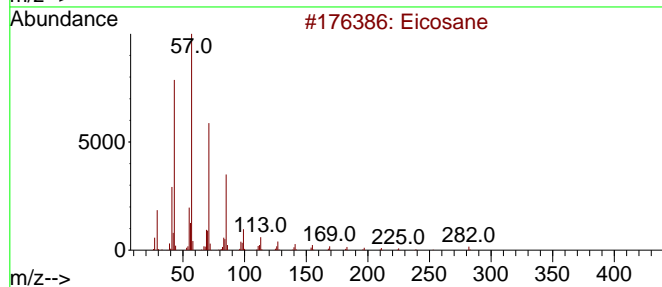
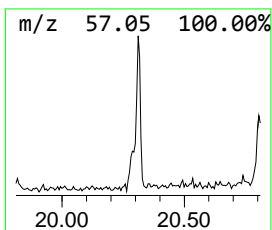
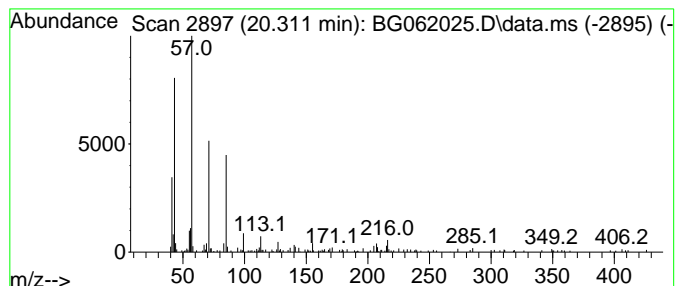
Quant Method : Z:\svoasrv\HPCHEM1\BNA_G\Methods\SFAM-EPA-BG070224.MA.M
 Quant Title : SVOA CALIBRATION

TIC Library : C:\DATABASE\NIST20.L
 TIC Integration Parameters: LSCINT.P

 Peak Number 3 (DEL) Alkane: Straight-Chai... Concentration Rank 8

R.T.	EstConc	Area	Relative to ISTD	R.T.
20.311	3.03 ng/ul	167358	Chrysene-d12	21.674

Hit#	of 5	Tentative ID	MW	MolForm	CAS#	Qual
1		Eicosane	282	C20H42	000112-95-8	72
2		Undecane, 4,7-dimethyl-	184	C13H28	017301-32-5	64
3		Tridecane, 1-iodo-	310	C13H27I	035599-77-0	64
4		Tetradecane, 1-iodo-	324	C14H29I	019218-94-1	64
5		Sulfurous acid, 2-propyl tridecy...	306	C16H34O3S	1000309-12-4	64



Data Path : Z:\svoasrv\HPCHEM1\BNA_G\Data\BG071124\
 Data File : BG062025.D
 Acq On : 12 Jul 2024 1:15
 Operator : MA/JU
 Sample : P3088-16
 Misc :
 ALS Vial : 20 Sample Multiplier: 1

Instrument :
 BNA_G
 ClientSampleId :
 A4D11

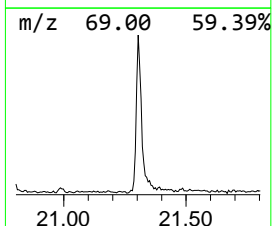
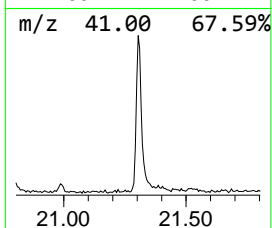
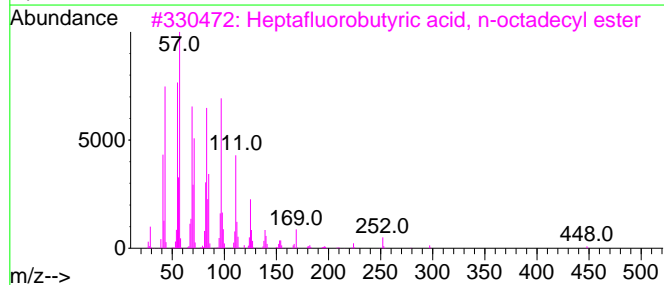
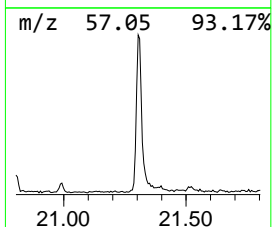
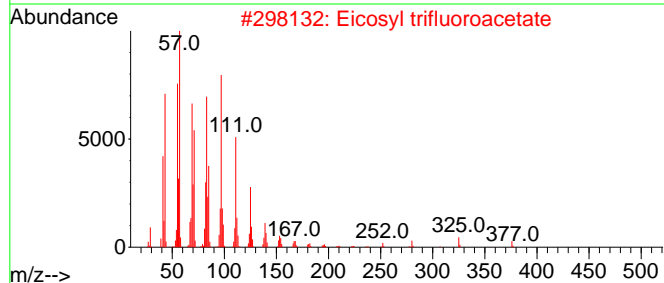
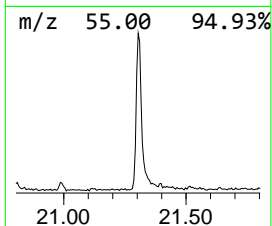
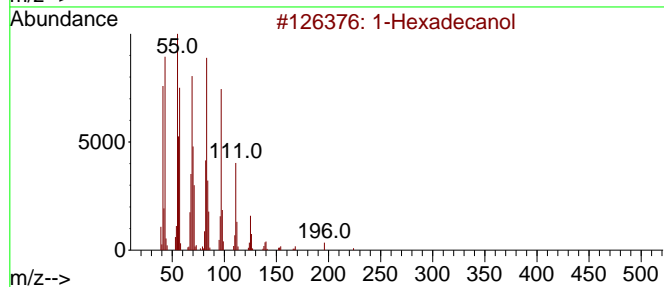
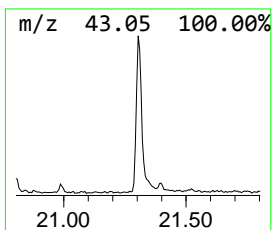
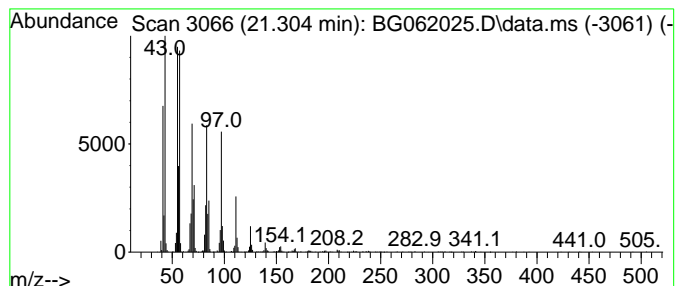
Quant Method : Z:\svoasrv\HPCHEM1\BNA_G\Methods\SFAM-EPA-BG070224.MA.M
 Quant Title : SVOA CALIBRATION

TIC Library : C:\DATABASE\NIST20.L
 TIC Integration Parameters: LSCINT.P

 Peak Number 4 1-Hexadecanol Concentration Rank 2

R.T.	EstConc	Area	Relative to ISTD	R.T.
21.304	38.09 ng/ul	2100260	Chrysene-d12	21.674

Hit#	of	5	Tentative ID	MW	MolForm	CAS#	Qual
1			1-Hexadecanol	242	C16H34O	036653-82-4	91
2			Eicosyl trifluoroacetate	394	C22H41F3O2	1000351-75-2	91
3			Heptafluorobutyric acid, n-octadecyl ester	466	C22H37F7O2	000400-57-7	91
4			1-Heneicosanol	312	C21H44O	015594-90-8	91
5			Pentafluoropropionic acid, octadecyl ester	416	C21H37F5O2	959261-25-7	91



Data Path : Z:\svoasrv\HPCHEM1\BNA_G\Data\BG071124\
 Data File : BG062025.D
 Acq On : 12 Jul 2024 1:15
 Operator : MA/JU
 Sample : P3088-16
 Misc :
 ALS Vial : 20 Sample Multiplier: 1

Instrument :
 BNA_G
 ClientSampleId :
 A4D11

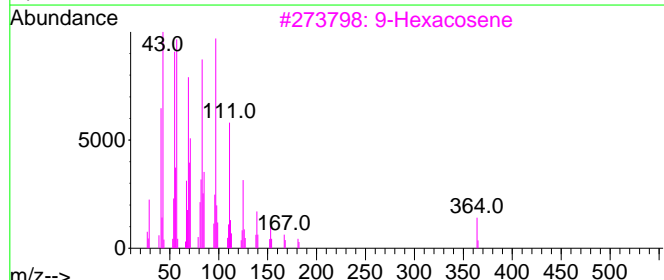
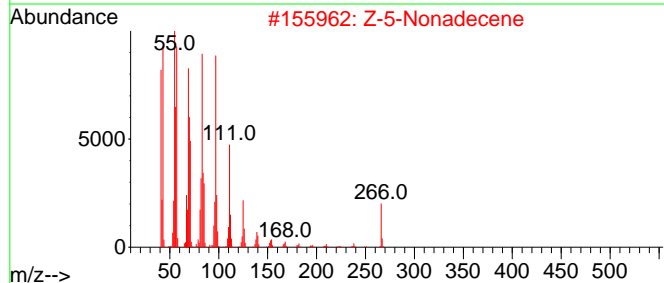
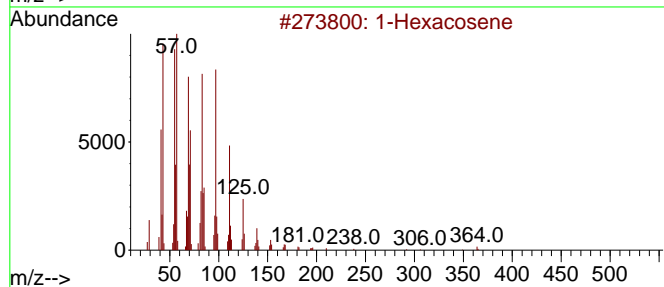
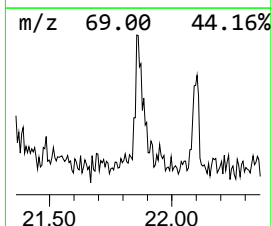
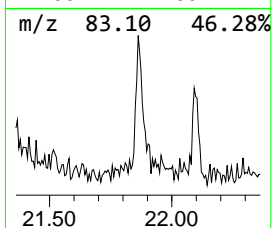
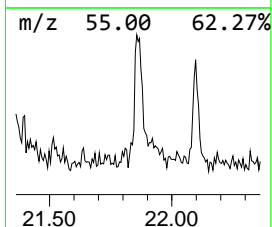
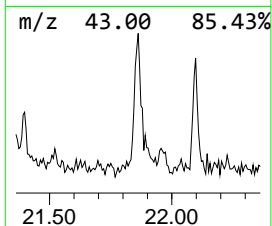
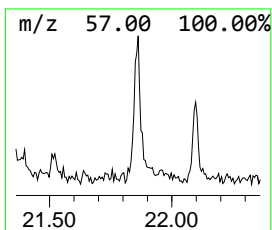
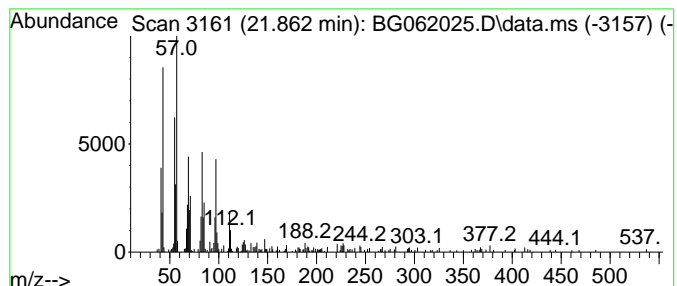
Quant Method : Z:\svoasrv\HPCHEM1\BNA_G\Methods\SFAM-EPA-BG070224.MA.M
 Quant Title : SVOA CALIBRATION

TIC Library : C:\DATABASE\NIST20.L
 TIC Integration Parameters: LSCINT.P

 Peak Number 5 (DEL) Alkane: Straight-Chai... Concentration Rank 7

R.T.	EstConc	Area	Relative to ISTD	R.T.
21.862	3.72 ng/ul	205082	Chrysene-d12	21.674

Hit#	of 5	Tentative ID	MW	MolForm	CAS#	Qual
1		1-Hexacosene	364	C26H52	018835-33-1	89
2		Z-5-Nonadecene	266	C19H38	1000131-11-8	89
3		9-Hexacosene	364	C26H52	071502-22-2	89
4		1-Hexacosene	364	C26H52	018835-33-1	87
5		1-Tricosene	322	C23H46	018835-32-0	87



Data Path : Z:\svoasrv\HPCHEM1\BNA_G\Data\BG071124\
 Data File : BG062025.D
 Acq On : 12 Jul 2024 1:15
 Operator : MA/JU
 Sample : P3088-16
 Misc :
 ALS Vial : 20 Sample Multiplier: 1

Instrument :
 BNA_G
 ClientSampleId :
 A4D11

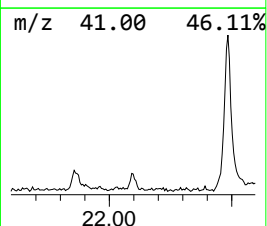
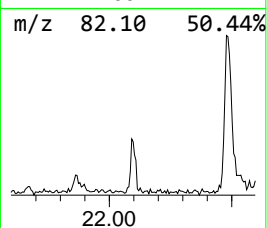
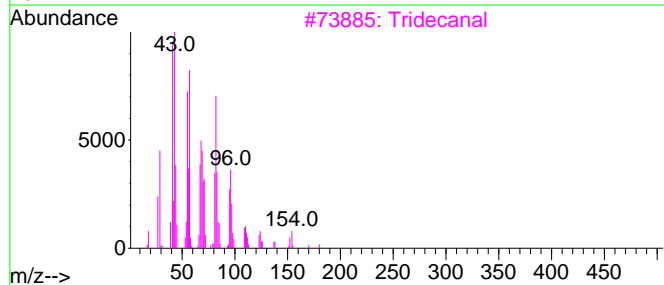
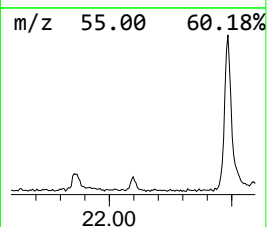
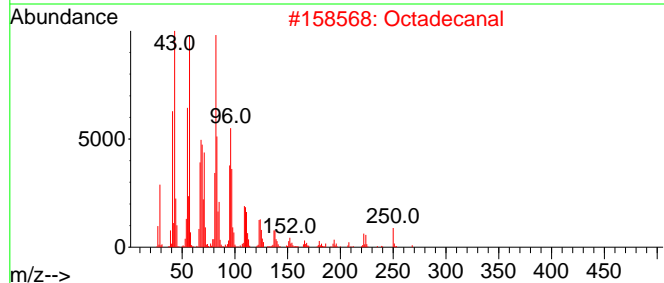
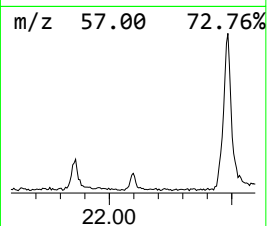
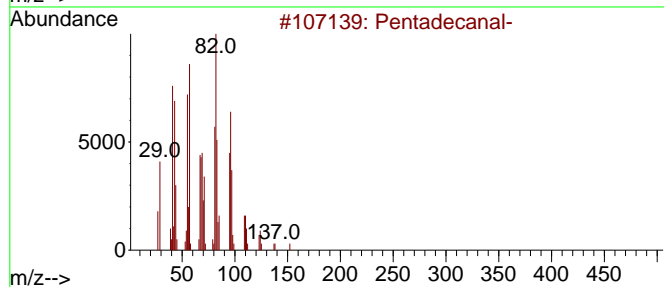
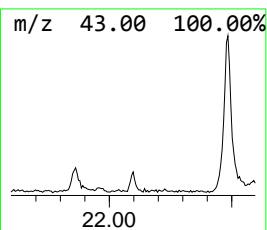
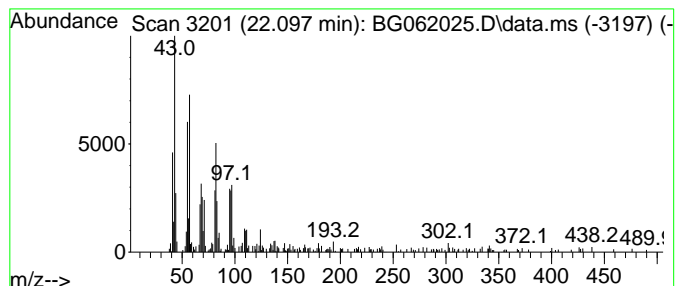
Quant Method : Z:\svoasrv\HPCHEM1\BNA_G\Methods\SFAM-EPA-BG070224.MA.M
 Quant Title : SVOA CALIBRATION

TIC Library : C:\DATABASE\NIST20.L
 TIC Integration Parameters: LSCINT.P

 Peak Number 6 Pentadecanal- Concentration Rank 6

R.T.	EstConc	Area	Relative to ISTD	R.T.
22.097	3.77 ng/ul	207970	Chrysene-d12	21.674

Hit#	of	5	Tentative ID	MW	MolForm	CAS#	Qual
1			Pentadecanal-	226	C15H30O	002765-11-9	64
2			Octadecanal	268	C18H36O	000638-66-4	58
3			Tridecanal	198	C13H26O	010486-19-8	58
4			1-Eicosyne	278	C20H38	000765-27-5	58
5			1,13-Tridecanediol, diacetate	300	C17H32O4	042236-70-4	58



Data Path : Z:\svoasrv\HPCHEM1\BNA_G\Data\BG071124\
 Data File : BG062025.D
 Acq On : 12 Jul 2024 1:15
 Operator : MA/JU
 Sample : P3088-16
 Misc :
 ALS Vial : 20 Sample Multiplier: 1

Instrument :
 BNA_G
 ClientSampleId :
 A4D11

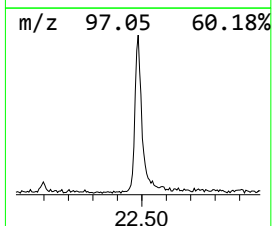
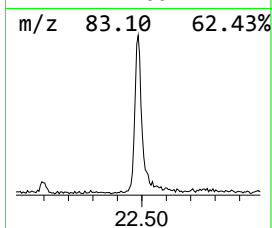
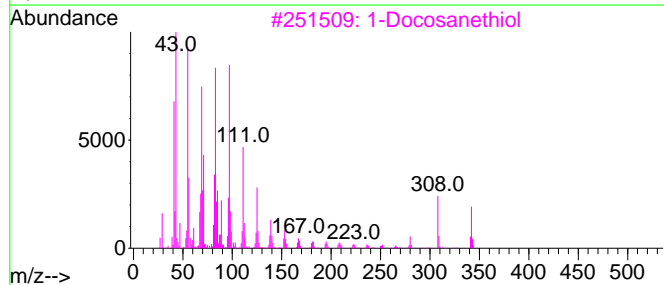
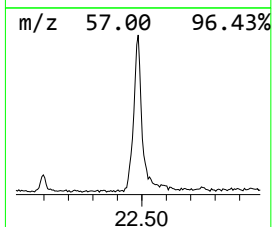
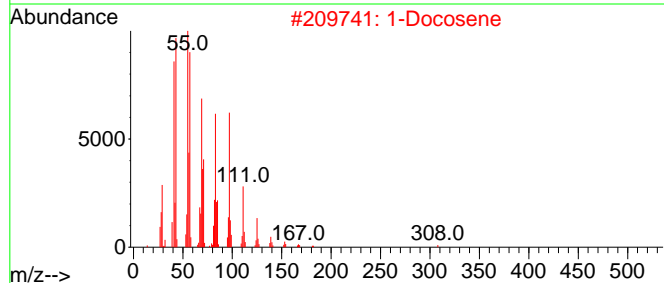
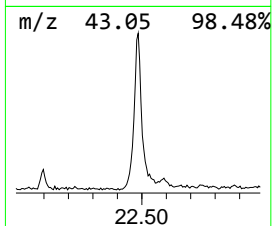
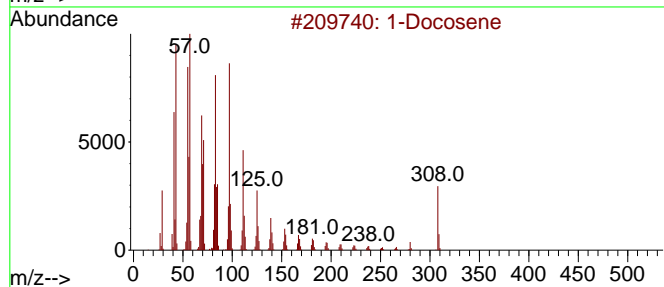
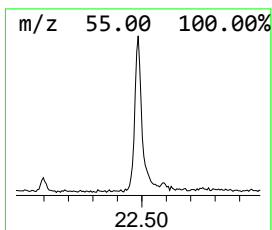
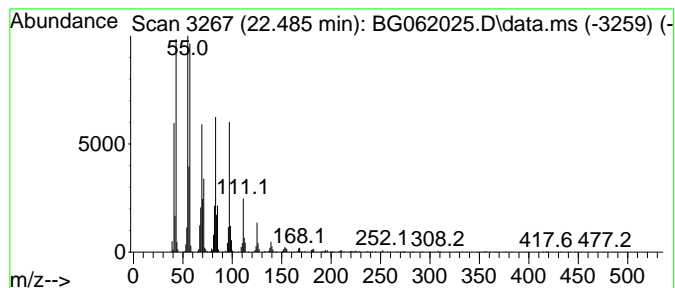
Quant Method : Z:\svoasrv\HPCHEM1\BNA_G\Methods\SFAM-EPA-BG070224.MA.M
 Quant Title : SVOA CALIBRATION

TIC Library : C:\DATABASE\NIST20.L
 TIC Integration Parameters: LSCINT.P

 Peak Number 7 (DEL) Alkane: Straight-Chai... Concentration Rank 1

R.T.	EstConc	Area	Relative to ISTD	R.T.
22.485	44.02 ng/ul	2427370	Chrysene-d12	21.674

Hit#	of 5	Tentative ID	MW	MolForm	CAS#	Qual
1		1-Docosene	308	C22H44	001599-67-3	99
2		1-Docosene	308	C22H44	001599-67-3	95
3		1-Docosanethiol	342	C22H46S	007773-83-3	94
4		Heptadecyl trifluoroacetate	352	C19H35F3O2	1010351-87-0	91
5		1-Hexacosene	364	C26H52	018835-33-1	91



Data Path : Z:\svoasrv\HPCHEM1\BNA_G\Data\BG071124\
 Data File : BG062025.D
 Acq On : 12 Jul 2024 1:15
 Operator : MA/JU
 Sample : P3088-16
 Misc :
 ALS Vial : 20 Sample Multiplier: 1

Instrument :
 BNA_G
 ClientSampleId :
 A4D11

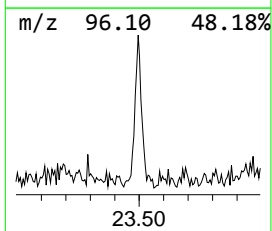
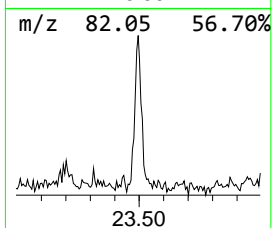
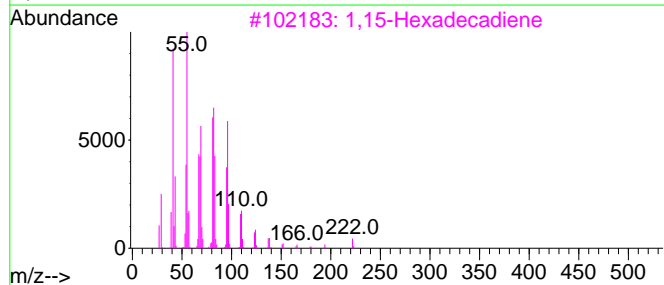
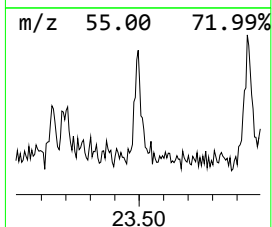
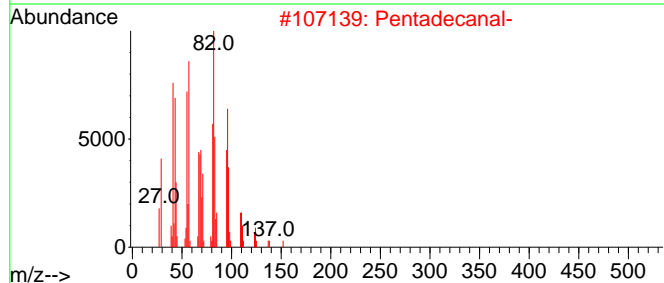
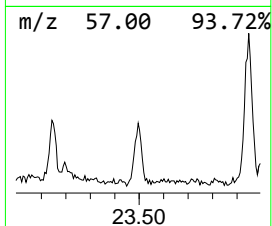
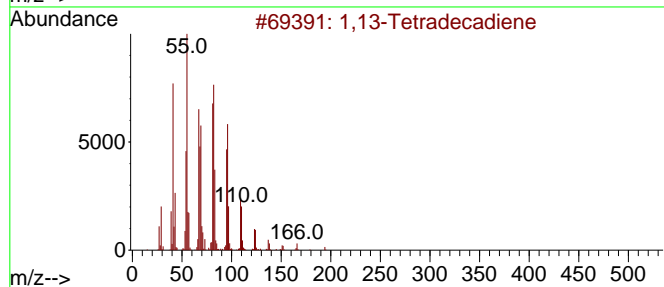
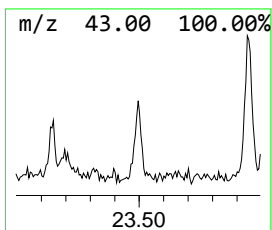
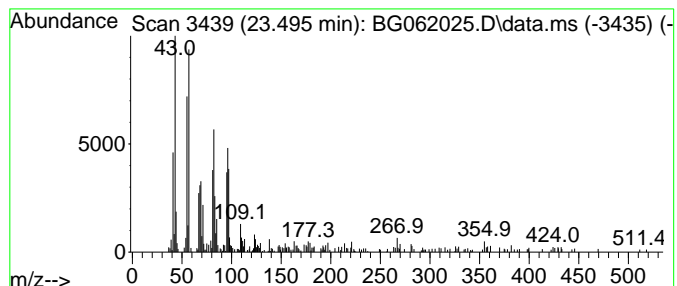
Quant Method : Z:\svoasrv\HPCHEM1\BNA_G\Methods\SFAM-EPA-BG070224.MA.M
 Quant Title : SVOA CALIBRATION

TIC Library : C:\DATABASE\NIST20.L
 TIC Integration Parameters: LSCINT.P

 Peak Number 8 1,13-Tetradecadiene Concentration Rank 5

R.T.	EstConc	Area	Relative to ISTD	R.T.
23.495	4.94 ng/ul	322819	Perylene-d12	24.882

Hit#	of 5	Tentative ID	MW	MolForm	CAS#	Qual
1		1,13-Tetradecadiene	194	C14H26	021964-49-8	70
2		Pentadecanal-	226	C15H30O	002765-11-9	62
3		1,15-Hexadecadiene	222	C16H30	021964-51-2	58
4		Cyclododecanol	184	C12H24O	001724-39-6	53
5		1,13-Tetradecadiene	194	C14H26	021964-49-8	49



Data Path : Z:\svoasrv\HPCHEM1\BNA_G\Data\BG071124\
 Data File : BG062025.D
 Acq On : 12 Jul 2024 1:15
 Operator : MA/JU
 Sample : P3088-16
 Misc :
 ALS Vial : 20 Sample Multiplier: 1

Instrument :
 BNA_G
 ClientSampleId :
 A4D11

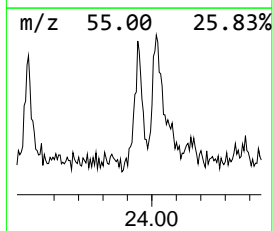
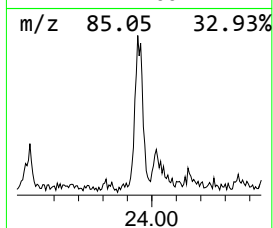
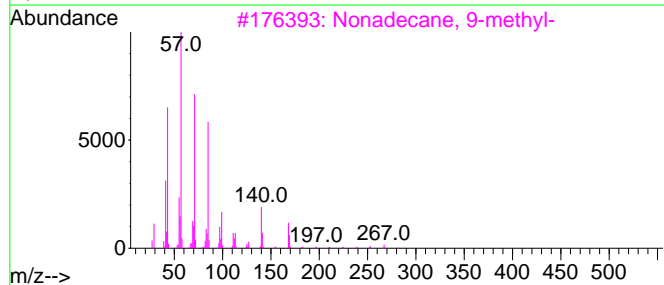
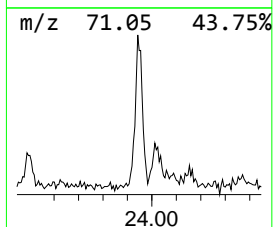
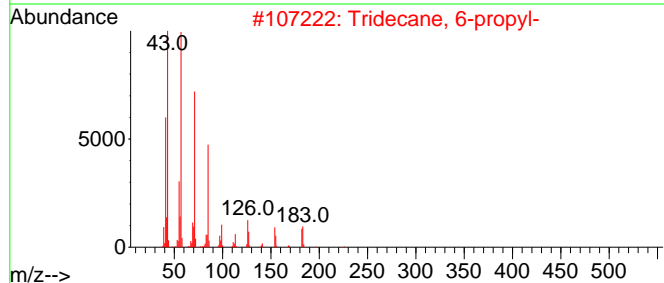
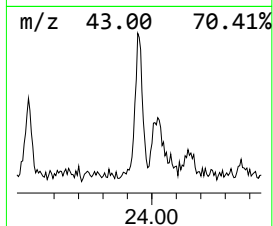
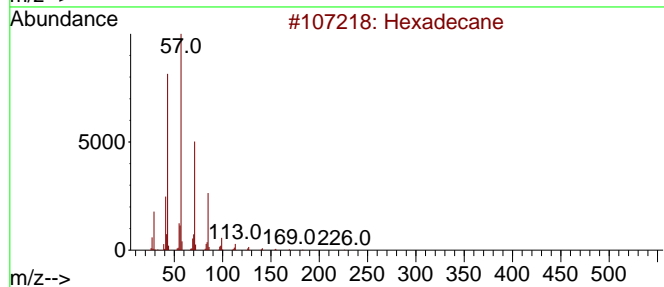
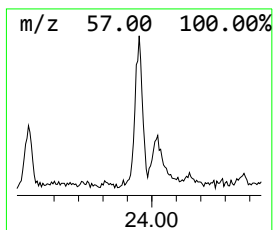
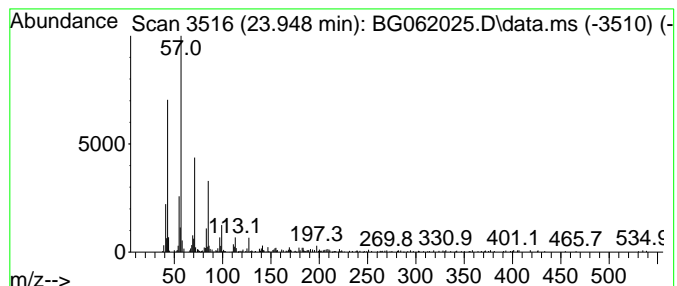
Quant Method : Z:\svoasrv\HPCHEM1\BNA_G\Methods\SFAM-EPA-BG070224.MA.M
 Quant Title : SVOA CALIBRATION

TIC Library : C:\DATABASE\NIST20.L
 TIC Integration Parameters: LSCINT.P

 Peak Number 9 (DEL) Alkane: Straight-Chai... Concentration Rank 4

R.T.	EstConc	Area	Relative to ISTD	R.T.
23.948	5.78 ng/ul	377154	Perylene-d12	24.882

Hit#	of	5	Tentative ID	MW	MolForm	CAS#	Qual
1			Hexadecane	226	C16H34	000544-76-3	81
2			Tridecane, 6-propyl-	226	C16H34	055045-10-8	76
3			Nonadecane, 9-methyl-	282	C20H42	013287-24-6	72
4			Decane, 3,8-dimethyl-	170	C12H26	017312-55-9	72
5			Octacosane	394	C28H58	000630-02-4	68



Data Path : Z:\svoasrv\HPCHEM1\BNA_G\Data\BG071124\
 Data File : BG062025.D
 Acq On : 12 Jul 2024 1:15
 Operator : MA/JU
 Sample : P3088-16
 Misc :
 ALS Vial : 20 Sample Multiplier: 1

Instrument :
 BNA_G
 ClientSampleId :
 A4D11

Quant Method : Z:\svoasrv\HPCHEM1\BNA_G\Methods\SFAM-EPA-BG070224.MA.M
 Quant Title : SVOA CALIBRATION

TIC Library : C:\DATABASE\NIST20.L
 TIC Integration Parameters: LSCINT.P

TIC Top Hit name	RT	EstConc	Units	Response	--Internal Standard--			
					#	RT	Resp	Conc
1-Phenoxypropan...	11.586	6.8	ng/ul	209616	2	10.851	619460	20.0
Bromoacetic aci...	20.287	2.3	ng/ul	128066	5	21.674	1102870	20.0
(DEL) Alkane: S...	20.311	3.0	ng/ul	167358	5	21.674	1102870	20.0
1-Hexadecanol	21.304	38.1	ng/ul	2100260	5	21.674	1102870	20.0
(DEL) Alkane: S...	21.862	3.7	ng/ul	205082	5	21.674	1102870	20.0
Pentadecanal-	22.097	3.8	ng/ul	207970	5	21.674	1102870	20.0
(DEL) Alkane: S...	22.485	44.0	ng/ul	2427370	5	21.674	1102870	20.0
1,13-Tetradecad...	23.495	4.9	ng/ul	322819	6	24.882	1306030	20.0
(DEL) Alkane: S...	23.948	5.8	ng/ul	377154	6	24.882	1306030	20.0