

Data Path : Z:\HPCHEM1\BNA_G\DATA\BG071315\
 Data File : BG017854.D
 Acq On : 14 Jul 2015 11:05
 Operator : TP/UM
 Sample : G2938-11
 Misc :
 ALS Vial : 30 Sample Multiplier: 1

Instrument :
 BNA_G
 ClientSampleId :
 C01X7

Integration Parameters: LSCINT.P

Integrator: RTE
 Smoothing : OFF
 Sampling : 1
 Start Thrs: 0.2
 Stop Thrs : 0

Filtering: 5
 Min Area: 0.1 % of largest Peak
 Max Peaks: 100
 Peak Location: TOP

If leading or trailing edge < 100 prefer < Baseline drop else tangent >
 Peak separation: 5

Method : Z:\HPCHEM1\BNA_G\METHODS\SOM02.2-EPA-BG070915.M
 Title : SVOA CALIBRATION

Signal : TIC

peak #	R.T. min	first scan	max scan	last scan	PK TY	peak height	corr. area	corr. % max.	% of total
1	2.793	14	18	25	rVB2	79325	146812	8.98%	0.839%
2	2.870	26	31	40	rVB	854035	1193001	72.96%	6.819%
3	6.765	689	694	700	rVB	74528	116358	7.12%	0.665%
4	6.929	716	722	735	rVB	255966	403146	24.66%	2.304%
5	7.123	748	755	767	rVB	246658	404427	24.73%	2.312%
6	7.588	828	834	841	rVV	301051	468819	28.67%	2.680%
7	7.658	844	846	849	rVB3	3293	3837	0.23%	0.022%
8	8.293	948	954	961	rBV	196525	301409	18.43%	1.723%
9	8.510	987	991	992	rBV2	2404	2268	0.14%	0.013%
10	8.739	1023	1030	1036	rBV	303924	488123	29.85%	2.790%
11	9.174	1103	1104	1108	rBV2	1958	2287	0.14%	0.013%
12	9.456	1143	1152	1161	rBV	205858	340819	20.84%	1.948%
13	9.991	1236	1243	1251	rBV	309112	503890	30.82%	2.880%
14	10.261	1285	1289	1295	rBV5	2480	3639	0.22%	0.021%
15	10.367	1300	1307	1315	rBV	430839	684652	41.87%	3.914%
16	10.508	1325	1331	1337	rBV4	18434	34298	2.10%	0.196%
17	10.937	1401	1404	1408	rBV3	2067	2814	0.17%	0.016%
18	11.066	1425	1426	1430	rVB4	2147	2296	0.14%	0.013%
19	12.593	1678	1686	1691	rBV6	1605	3700	0.23%	0.021%
20	12.846	1727	1729	1733	rVB4	3011	3648	0.22%	0.021%
21	13.663	1861	1868	1876	rVB	602418	849496	51.95%	4.856%
22	13.933	1907	1914	1922	rBV	726522	1051023	64.28%	6.008%
23	14.244	1959	1967	1974	rBV2	595342	876147	53.58%	5.008%
24	14.450	1997	2002	2007	rBV2	52385	78474	4.80%	0.449%
25	14.485	2007	2008	2011	rVV2	4081	3909	0.24%	0.022%
26	14.785	2056	2059	2061	rBV2	1987	2401	0.15%	0.014%
27	15.243	2130	2137	2144	rVB	932446	1287543	78.74%	7.360%
28	15.367	2151	2158	2166	rBV	204173	294078	17.99%	1.681%
29	15.484	2174	2178	2181	rBV5	5206	6652	0.41%	0.038%
30	15.584	2191	2195	2198	rBV3	1940	2756	0.17%	0.016%
31	15.702	2208	2215	2218	rBV4	1587	2767	0.17%	0.016%
32	16.201	2298	2300	2306	rVB3	2713	3743	0.23%	0.021%
33	16.501	2348	2351	2353	rBV2	1786	2602	0.16%	0.015%
34	16.783	2394	2399	2403	rBV4	3196	4618	0.28%	0.026%

Data Path : Z:\HPCHEM1\BNA_G\DATA\BG071315\
 Data File : BG017854.D
 Acq On : 14 Jul 2015 11:05
 Operator : TP/UM
 Sample : G2938-11
 Misc :
 ALS Vial : 30 Sample Multiplier: 1

Instrument :
 BNA_G
 ClientSampleId :
 C01X7

Integration Parameters: LSCINT.P

Integrator: RTE
 Smoothing : OFF
 Sampling : 1
 Start Thrs: 0.2
 Stop Thrs : 0

Filtering: 5
 Min Area: 0.1 % of largest Peak
 Max Peaks: 100
 Peak Location: TOP

If leading or trailing edge < 100 prefer < Baseline drop else tangent >
 Peak separation: 5

Method : Z:\HPCHEM1\BNA_G\METHODS\SOM02.2-EPA-BG070915.M
 Title : SVOA CALIBRATION

35	17.000	2429	2436	2442	rVB	700308	1030462	63.02%	5.890%
36	17.094	2445	2452	2458	rBV	1023380	1430621	87.49%	8.178%
37	17.323	2489	2491	2495	rVB4	1939	2696	0.16%	0.015%
38	17.875	2581	2585	2587	rVV2	2626	3248	0.20%	0.019%
39	17.917	2587	2592	2593	rVB4	1998	2533	0.15%	0.014%
40	17.934	2593	2595	2598	rVB3	3188	3287	0.20%	0.019%
41	18.710	2725	2727	2731	rBV3	2358	2917	0.18%	0.017%
42	18.898	2756	2759	2764	rVB4	2022	3531	0.22%	0.020%
43	18.962	2767	2770	2771	rVV3	3056	2506	0.15%	0.014%
44	19.004	2775	2777	2781	rVV3	2500	2901	0.18%	0.017%
45	19.056	2785	2786	2789	rVV2	2093	2425	0.15%	0.014%
46	19.286	2822	2825	2828	rVB2	8332	9346	0.57%	0.053%
47	19.403	2836	2845	2856	rBV	1239492	1635092	100.00%	9.346%
48	19.626	2881	2883	2885	rBV2	2560	2342	0.14%	0.013%
49	19.656	2886	2888	2893	rVB3	2541	3498	0.21%	0.020%
50	19.885	2924	2927	2929	rBV	2927	3090	0.19%	0.018%
51	19.997	2944	2946	2947	rBV2	2786	2246	0.14%	0.013%
52	20.038	2950	2953	2956	rVB4	2224	3321	0.20%	0.019%
53	20.202	2979	2981	2984	rVB3	3043	3103	0.19%	0.018%
54	20.402	3011	3015	3018	rBV6	2836	3310	0.20%	0.019%
55	20.531	3035	3037	3040	rVV4	2010	2248	0.14%	0.013%
56	20.649	3056	3057	3061	rVB3	3400	2387	0.15%	0.014%
57	20.678	3061	3062	3066	rBV3	3404	3128	0.19%	0.018%
58	20.719	3066	3069	3070	rBV2	2927	2545	0.16%	0.015%
59	20.831	3084	3088	3091	rVB5	2668	2847	0.17%	0.016%
60	20.995	3113	3116	3121	rVB5	11192	12713	0.78%	0.073%
61	21.130	3136	3139	3142	rBV4	3734	5687	0.35%	0.033%
62	21.195	3145	3150	3158	rVV	947815	1134811	69.40%	6.487%
63	21.319	3169	3171	3174	rVB3	3021	2884	0.18%	0.016%
64	21.395	3183	3184	3186	rBV2	3114	2459	0.15%	0.014%
65	21.742	3241	3243	3246	rVV4	3100	2702	0.17%	0.015%
66	21.906	3269	3271	3272	rBV2	2664	2508	0.15%	0.014%
67	21.935	3274	3276	3278	rBV3	2823	3657	0.22%	0.021%
68	22.006	3287	3288	3290	rBV2	3741	3215	0.20%	0.018%
69	22.076	3299	3300	3301	rBV	4973	2713	0.17%	0.016%
70	22.129	3307	3309	3311	rBV2	3838	2599	0.16%	0.015%
71	22.153	3311	3313	3317	rVV5	3566	4033	0.25%	0.023%

Data Path : Z:\HPCHEM1\BNA_G\DATA\BG071315\
 Data File : BG017854.D
 Acq On : 14 Jul 2015 11:05
 Operator : TP/UM
 Sample : G2938-11
 Misc :
 ALS Vial : 30 Sample Multiplier: 1

Instrument :
 BNA_G
 ClientSampleId :
 C01X7

Integration Parameters: LSCINT.P

Integrator: RTE
 Smoothing : OFF
 Sampling : 1
 Start Thrs: 0.2
 Stop Thrs : 0

Filtering: 5
 Min Area: 0.1 % of largest Peak
 Max Peaks: 100
 Peak Location: TOP

If leading or trailing edge < 100 prefer < Baseline drop else tangent >
 Peak separation: 5

Method : Z:\HPCHEM1\BNA_G\METHODS\SOM02.2-EPA-BG070915.M
 Title : SVOA CALIBRATION

72	22.687	3401	3404	3406	rBV4	5223	5684	0.35%	0.032%
73	22.817	3424	3426	3428	rBV2	3693	4097	0.25%	0.023%
74	22.852	3430	3432	3434	rVV2	3390	2705	0.17%	0.015%
75	22.905	3440	3441	3443	rBV2	4334	3505	0.21%	0.020%
76	23.087	3469	3472	3475	rBV4	3361	4956	0.30%	0.028%
77	23.275	3495	3504	3519	rBV	773432	1411296	86.31%	8.067%
78	23.416	3521	3528	3538	rVV2	580664	1067344	65.28%	6.101%
79	23.798	3592	3593	3595	rBV2	3680	2765	0.17%	0.016%
80	24.186	3657	3659	3660	rBV2	4455	2944	0.18%	0.017%
81	24.262	3670	3672	3674	rBV3	4099	3756	0.23%	0.021%
82	24.280	3674	3675	3677	rVB2	6192	3395	0.21%	0.019%
83	24.832	3767	3769	3770	rVB2	4891	3054	0.19%	0.017%
84	25.185	3827	3829	3833	rVB3	4054	2719	0.17%	0.016%
85	25.226	3835	3836	3838	rVV	4949	2999	0.18%	0.017%
86	25.261	3840	3842	3844	rVB3	4186	3318	0.20%	0.019%
87	25.925	3951	3955	3958	rVB5	3594	4802	0.29%	0.027%
88	26.095	3982	3984	3985	rBV2	3631	2272	0.14%	0.013%
89	26.113	3985	3987	3989	rVB3	3127	2807	0.17%	0.016%
90	26.266	4011	4013	4014	rBV2	3388	3115	0.19%	0.018%
91	26.512	4053	4055	4057	rBV2	5084	3404	0.21%	0.019%
92	26.624	4072	4074	4075	rBV2	3880	2316	0.14%	0.013%
93	26.800	4102	4104	4105	rVB2	5365	2519	0.15%	0.014%
94	27.176	4165	4168	4170	rBV4	4060	4407	0.27%	0.025%
95	27.212	4172	4174	4176	rBV2	5840	5443	0.33%	0.031%
96	27.699	4256	4257	4258	rBV	5116	2383	0.15%	0.014%
97	27.811	4274	4276	4278	rBV3	3300	2691	0.16%	0.015%
98	27.864	4283	4285	4288	rVB4	5012	4361	0.27%	0.025%
99	28.774	4439	4440	4442	rBV	4362	3320	0.20%	0.019%
100	29.333	4533	4535	4537	rBV3	4542	3959	0.24%	0.023%

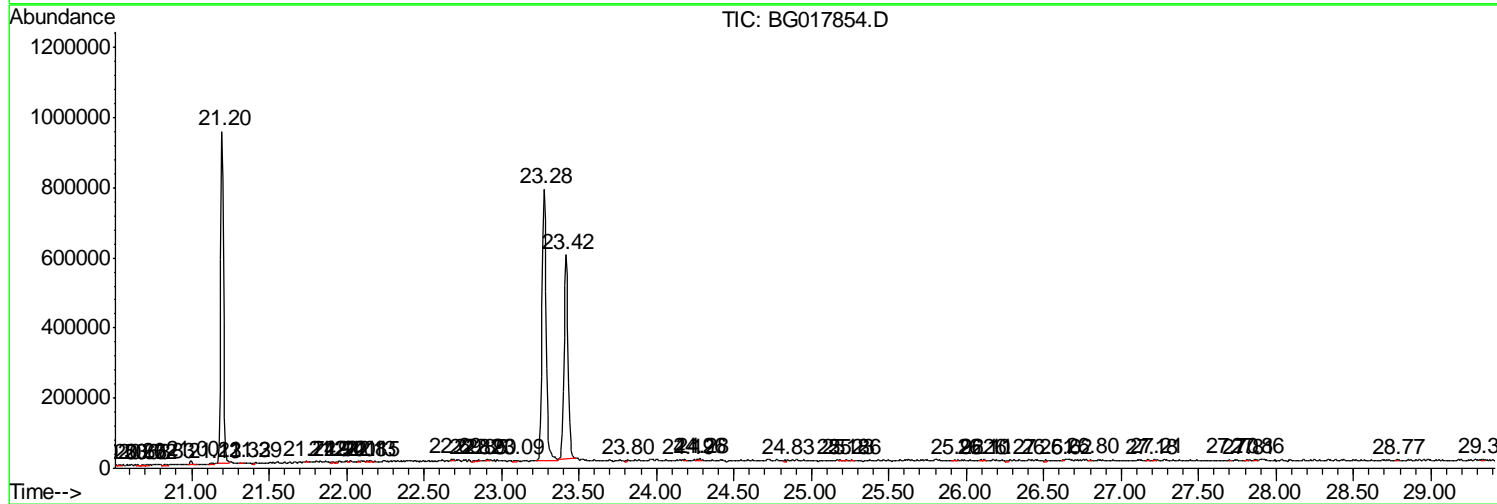
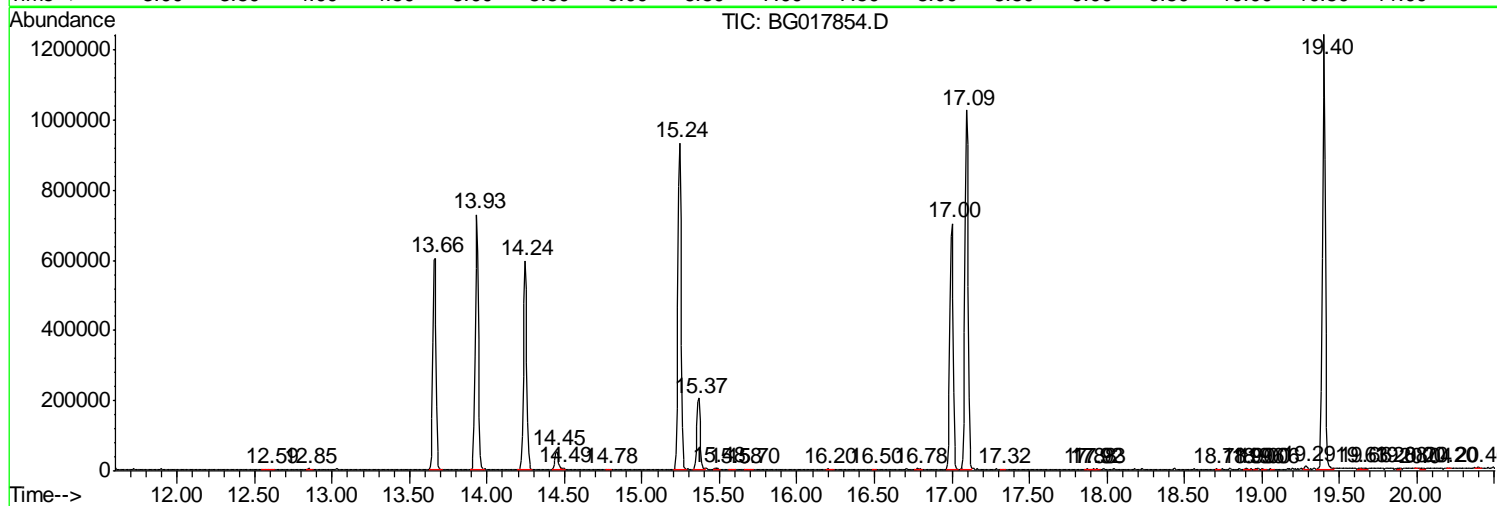
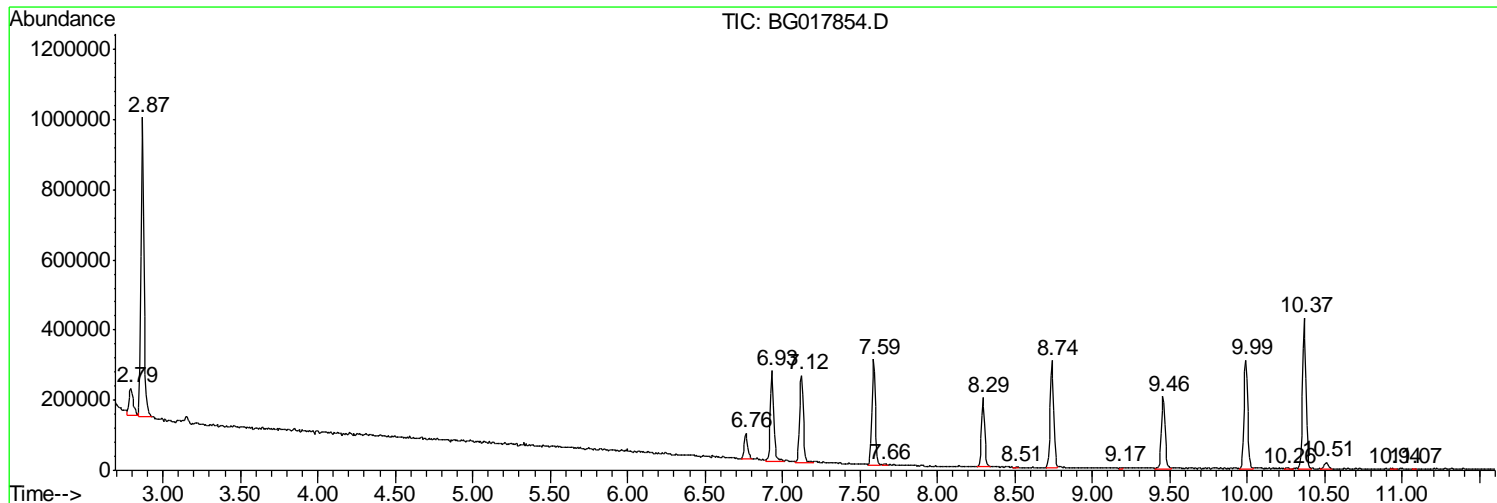
Sum of corrected areas: 17494399

Data Path : Z:\HPCHEM1\BNA_G\DATA\BG071315\
 Data File : BG017854.D
 Acq On : 14 Jul 2015 11:05
 Operator : TP/UM
 Sample : G2938-11
 Misc :
 ALS Vial : 30 Sample Multiplier: 1

Instrument :
 BNA_G
 ClientSampled :
 C01X7

Quant Method : Z:\HPCHEM1\BNA_G\METHODS\SOM02.2-EPA-BG070915.M
 Quant Title : SVOA CALIBRATION

TIC Library : C:\DATABASE\NIST02.L
 TIC Integration Parameters: LSCINT.P



Data Path : Z:\HPCHEM1\BNA_G\DATA\BG071315\
 Data File : BG017854.D
 Acq On : 14 Jul 2015 11:05
 Operator : TP/UM
 Sample : G2938-11
 Misc :
 ALS Vial : 30 Sample Multiplier: 1

Instrument :
 BNA_G
 ClientSampleID :
 C01X7

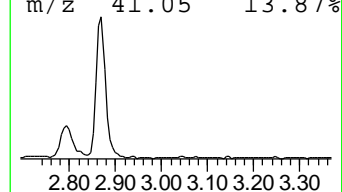
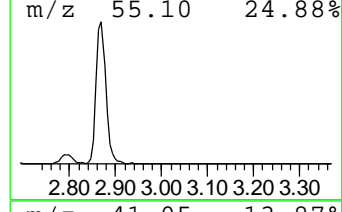
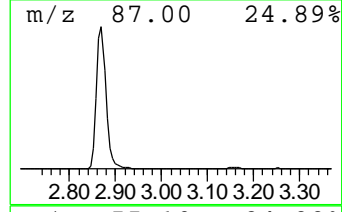
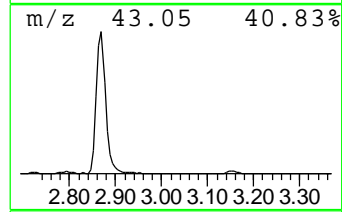
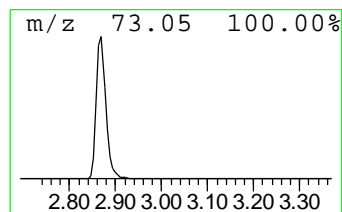
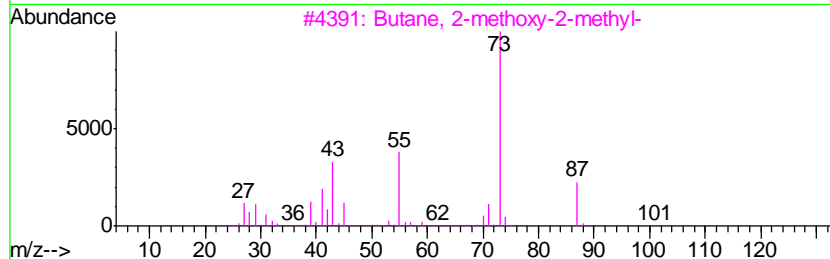
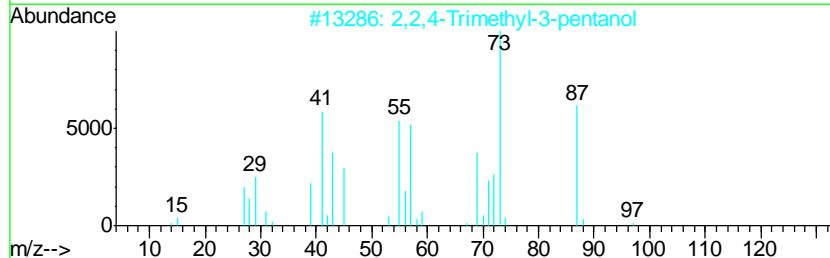
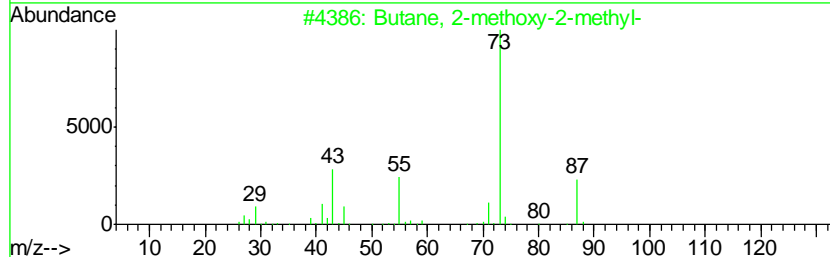
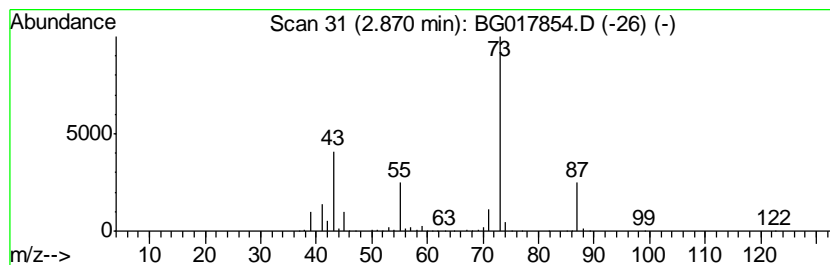
Quant Method : Z:\HPCHEM1\BNA_G\METHODS\SOM02.2-EPA-BG070915.M
 Quant Title : SVOA CALIBRATION

TIC Library : C:\DATABASE\NIST02.L
 TIC Integration Parameters: LSCINT.P

 Peak Number 2 Butane, 2-methoxy-2-methyl- Concentration Rank 1

R.T.	EstConc	Area	Relative to ISTD	R.T.
2.87	50.89 ng/ul	1193000	1,4-Dichlorobenzene-d4	7.59

Hit#	of	Tentative ID	MW	MolForm	CAS#	Qual
1	5	Butane, 2-methoxy-2-methyl-	102	C6H14O	000994-05-8	72
2		2,2,4-Trimethyl-3-pentanol	130	C8H18O	005162-48-1	50
3		Butane, 2-methoxy-2-methyl-	102	C6H14O	000994-05-8	50
4		1,3-Dioxolane, 2-methyl-	88	C4H8O2	000497-26-7	28
5		2-Methyl-5-hexen-3-ol	114	C7H14O	032815-70-6	25



Data Path : Z:\HPCHEM1\BNA_G\DATA\BG071315\
Data File : BG017854.D
Acq On : 14 Jul 2015 11:05
Operator : TP/UM
Sample : G2938-11
Misc :
ALS Vial : 30 Sample Multiplier: 1

Instrument :
BNA_G
ClientSampleId :
C01X7

Quant Method : Z:\HPCHEM1\BNA_G\METHODS\SOM02.2-EPA-BG070915.M
Quant Title : SVOA CALIBRATION

TIC Library : C:\DATABASE\NIST02.L
TIC Integration Parameters: LSCINT.P

TIC Top Hit name	RT	EstConc	Units	Response	--Internal Standard--			
					#	RT	Resp	Conc
Butane, 2-methoxy...	2.87	50.9	ng/ul	1193000	1	7.59	468819	20.0