

Data Path : Z:\SVOASRV\HPCHEM1\BNA_G\DATA\BG071318\
 Data File : BG035633.D
 Acq On : 13 Jul 2018 17:28
 Operator : JU/SJ
 Sample : J3956-03
 Misc :
 ALS Vial : 10 Sample Multiplier: 1

Instrument :
 BNA_G
 ClientSampleId :
 CONTINGENCY-DUCK-BANK-CON

Quant Time: Jul 14 00:11:42 2018
 Quant Method : Z:\SVOASRV\HPCHEM1\BNA_G\METHODS\8270-BG071218.M
 Quant Title : ASP BNA STANDARDS FOR 5 POINT CALIBRATION
 QLast Update : Thu Jul 12 14:43:32 2018
 Response via : Initial Calibration

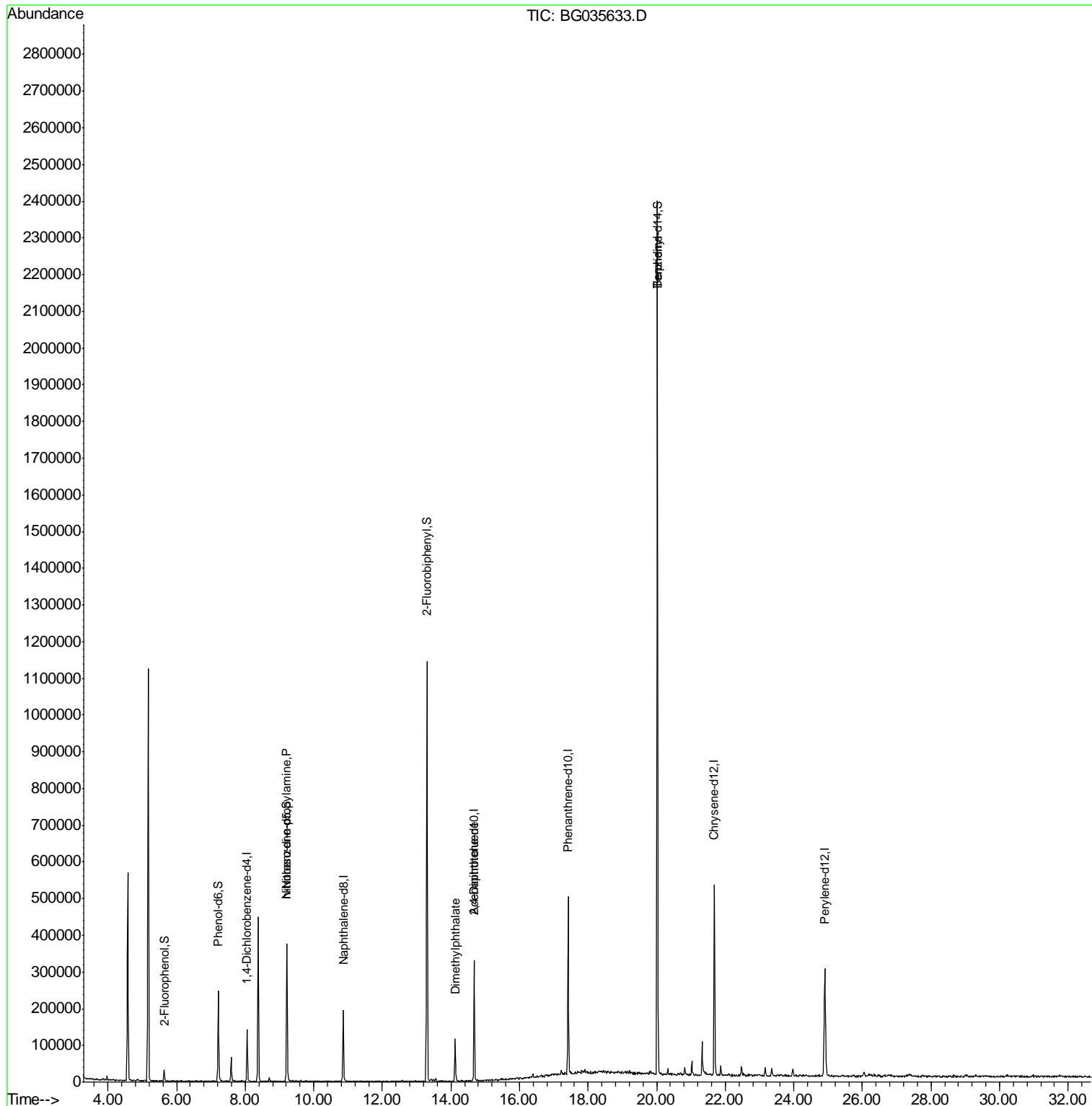
Internal Standards	R.T.	QIon	Response	Conc	Units	Dev(Min)
1) 1,4-Dichlorobenzene-d4	8.06	152	39551	20.00	ng	0.00
21) Naphthalene-d8	10.86	136	157055	20.00	ng	0.00
38) Acenaphthene-d10	14.67	164	114459	20.00	ng	0.00
63) Phenanthrene-d10	17.42	188	309232	20.00	ng	0.00
75) Chrysene-d12	21.68	240	329610	20.00	ng	0.00
86) Perylene-d12	24.91	264	318240	20.00	ng	0.00
System Monitoring Compounds						
5) 2-Fluorophenol	5.63	112	13001	5.46	ng	0.00
7) Phenol-d6	7.22	99	144997	40.79	ng	0.00
23) Nitrobenzene-d5	9.21	82	256479	68.22	ng	0.00
41) 2,4,6-Tribromophenol	16.18	330	275	0.18	ng	0.01
44) 2-Fluorobiphenyl	13.30	172	615651	72.06	ng	0.00
78) Terphenyl-d14	20.02	244	1119610	74.88	ng	0.00
Target Compounds						
19) n-Nitroso-di-n-propylamine	9.21	70	35864	11.983	ng	# 66
49) Dimethylphthalate	14.13	163	75805	7.559	ng	# 96
56) 2,4-Dinitrotoluene	14.68	165	16439	5.611	ng	# 18
76) Benzidine	20.02	184	20330	2.346	ng	# 94

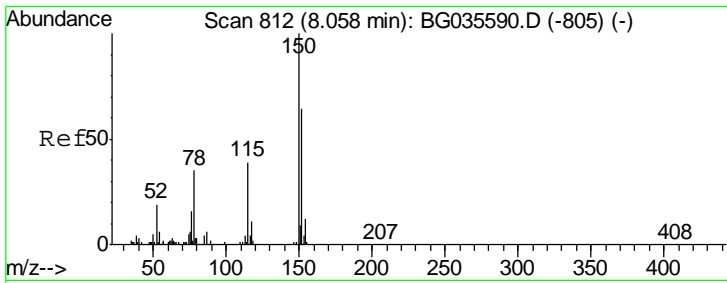
(#) = qualifier out of range (m) = manual integration (+) = signals summed

Data Path : Z:\SVOASRV\HPCHEM1\BNA_G\DATA\BG071318\
Data File : BG035633.D
Acq On : 13 Jul 2018 17:28
Operator : JU/SJ
Sample : J3956-03
Misc :
ALS Vial : 10 Sample Multiplier: 1

Instrument :
BNA_G
ClientSampleId :
CONTINGENCY-DUCK-BANK-CON

Quant Time: Jul 14 00:11:42 2018
Quant Method : Z:\SVOASRV\HPCHEM1\BNA_G\METHODS\8270-BG071218.M
Quant Title : ASP BNA STANDARDS FOR 5 POINT CALIBRATION
QLast Update : Thu Jul 12 14:43:32 2018
Response via : Initial Calibration

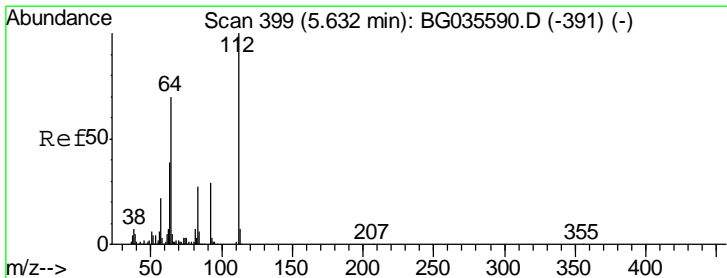
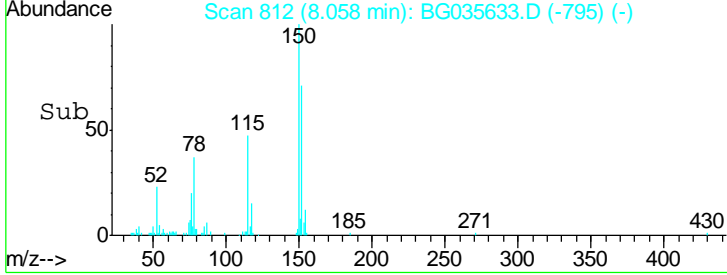
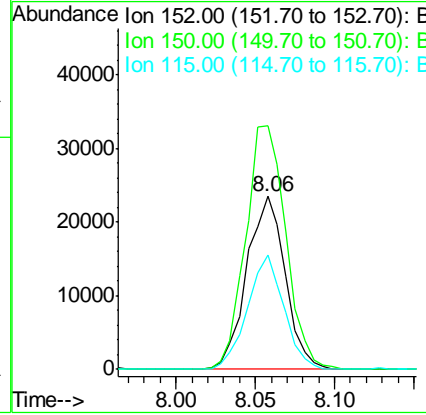
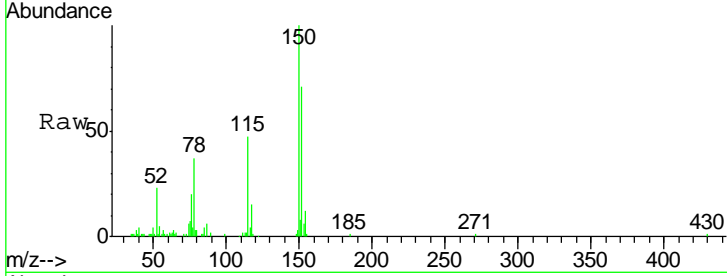




#1
 1,4-Dichlorobenzene-d4
 Concen: 20.000 ng
 RT: 8.06 min Scan# 812
 Delta R.T. -0.00 min
 Lab File: BG035633.D
 Acq: 13 Jul 2018 17:28

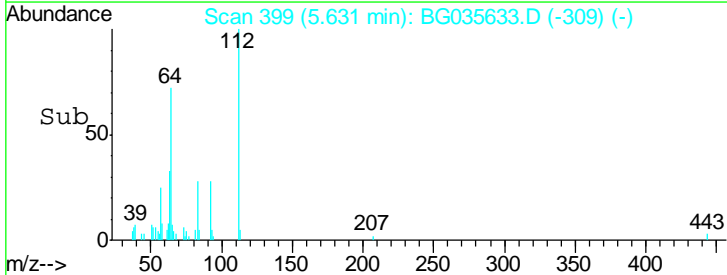
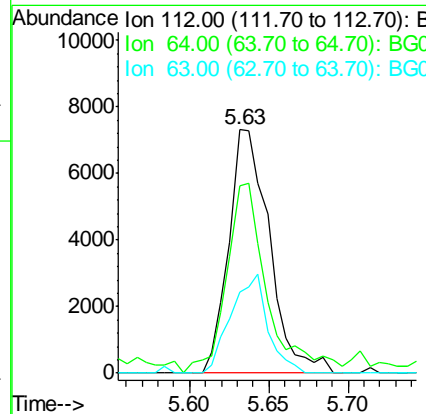
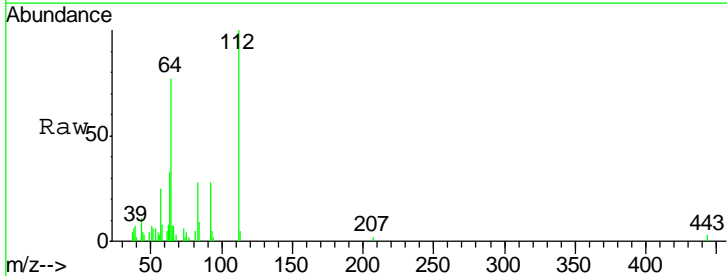
Instrument :
 BNA_G
ClientSampleId :
 CONTINGENCY-DUCK-BANK-CON

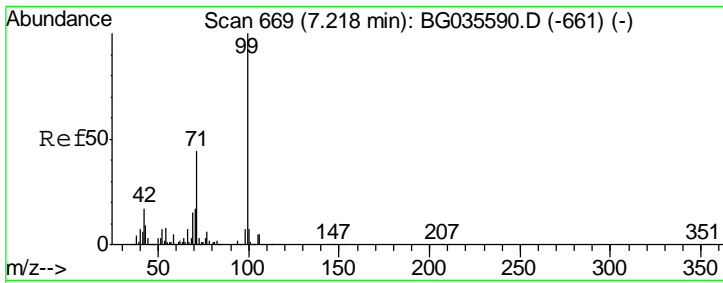
Tgt Ion	Resp	Lower	Upper
152	39551		
152	100		
150	140.7	126.6	189.8
115	66.1	53.0	79.4



#5
 2-Fluorophenol
 Concen: 5.457 ng
 RT: 5.63 min Scan# 399
 Delta R.T. -0.00 min
 Lab File: BG035633.D
 Acq: 13 Jul 2018 17:28

Tgt Ion	Resp	Lower	Upper
112	13001		
112	100		
64	77.2	56.3	84.5
63	33.2	30.1	45.1

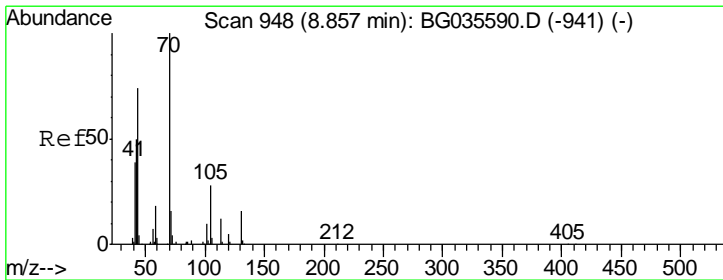
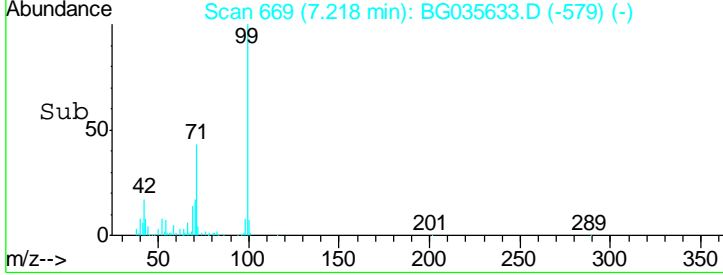
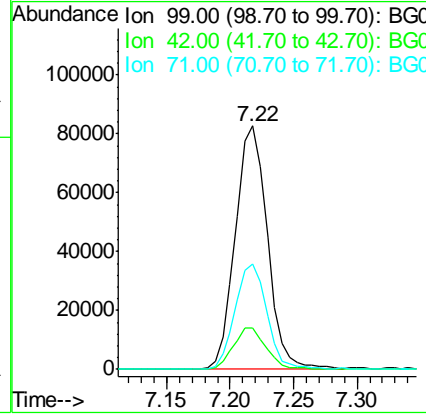
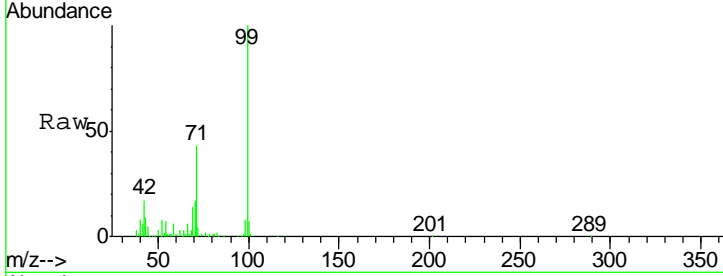




#7
 Phenol-d6
 Concen: 40.795 ng
 RT: 7.22 min Scan# 669
 Delta R.T. -0.00 min
 Lab File: BG035633.D
 Acq: 13 Jul 2018 17:28

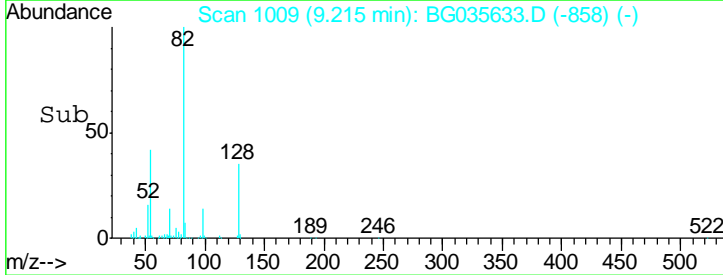
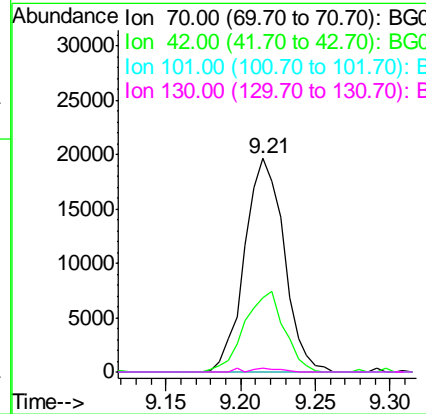
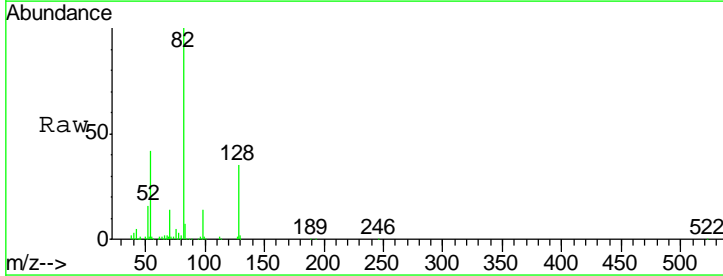
Instrument :
 BNA_G
ClientSampleId :
 CONTINGENCY-DUCK-BANK-CON

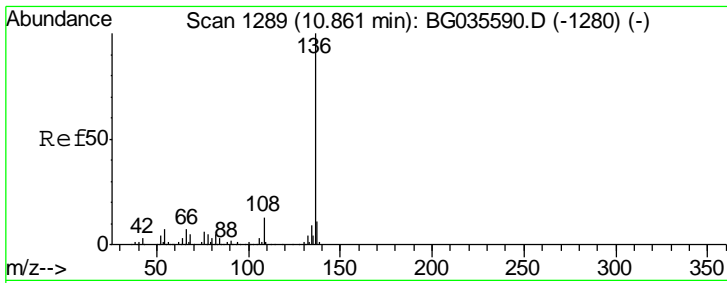
Tgt Ion	Resp	Lower	Upper
99	144997		
42	17.0	14.1	21.1
71	43.4	26.1	39.1#



#19
 n-Nitroso-di-n-propylamine
 Concen: 11.983 ng
 RT: 9.21 min Scan# 1009
 Delta R.T. 0.36 min
 Lab File: BG035633.D
 Acq: 13 Jul 2018 17:28

Tgt Ion	Resp	Lower	Upper
70	35864		
42	34.8	49.1	73.7#
101	0.0	8.5	12.7#
130	1.7	13.4	20.0#

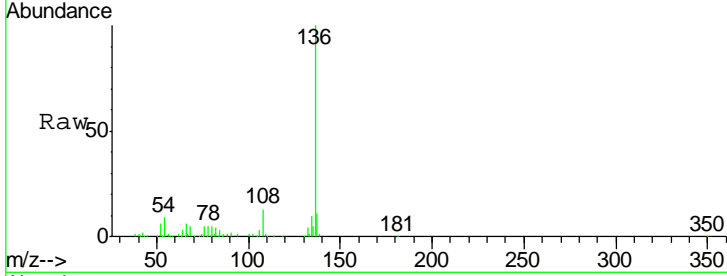




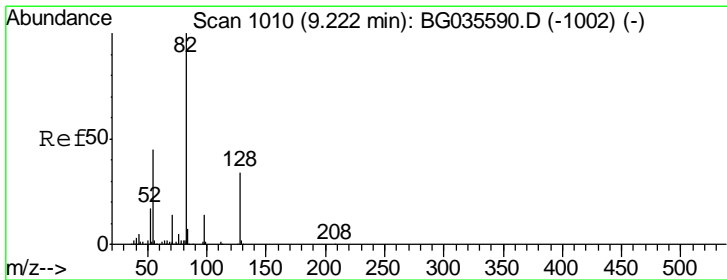
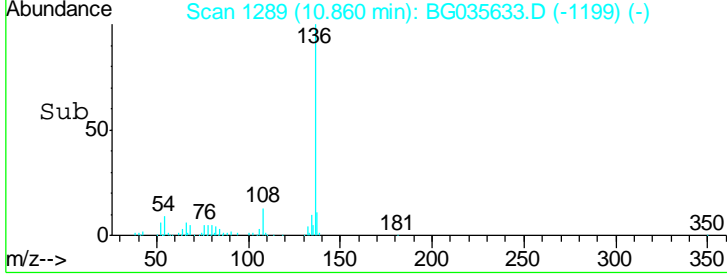
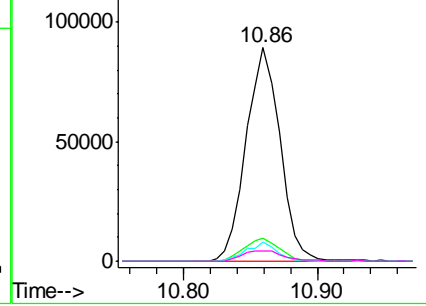
#21
 Naphthalene-d8
 Concen: 20.000 ng
 RT: 10.86 min Scan# 1289
 Delta R.T. -0.00 min
 Lab File: BG035633.D
 Acq: 13 Jul 2018 17:28

Instrument :
 BNA_G
ClientSampleId :
 CONTINGENCY-DUCK-BANK-CON

Tgt Ion	Resp	Lower	Upper
136	157055		
137	11.0	9.2	13.8
54	9.2	10.3	15.5#
68	5.0	4.5	6.7

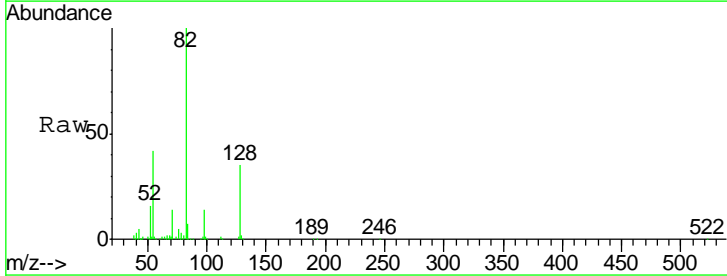


Abundance Ion 136.00 (135.70 to 136.70): BGC
 Ion 137.00 (136.70 to 137.70): BGC
 Ion 54.00 (53.70 to 54.70): BGC
 Ion 68.00 (67.70 to 68.70): BGC

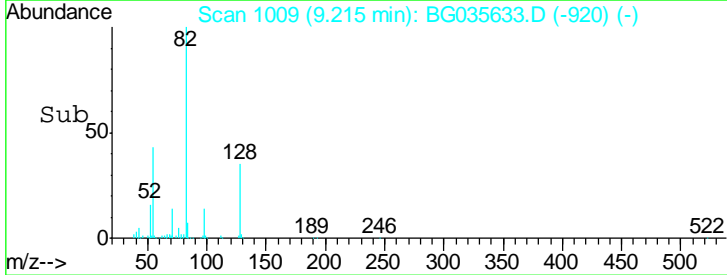
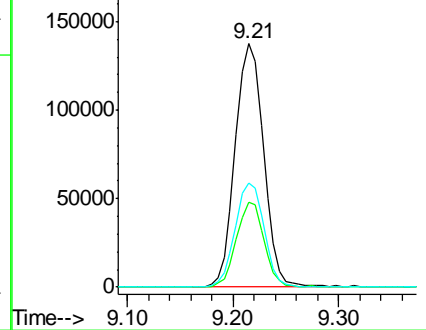


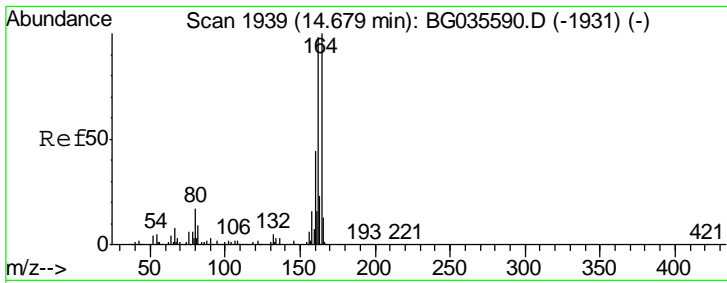
#23
 Nitrobenzene-d5
 Concen: 68.220 ng
 RT: 9.21 min Scan# 1009
 Delta R.T. -0.01 min
 Lab File: BG035633.D
 Acq: 13 Jul 2018 17:28

Tgt Ion	Resp	Lower	Upper
82	256479		
128	34.7	29.7	44.5
54	42.5	43.1	64.7#



Abundance Ion 82.00 (81.70 to 82.70): BGC
 Ion 128.00 (127.70 to 128.70): BGC
 Ion 54.00 (53.70 to 54.70): BGC

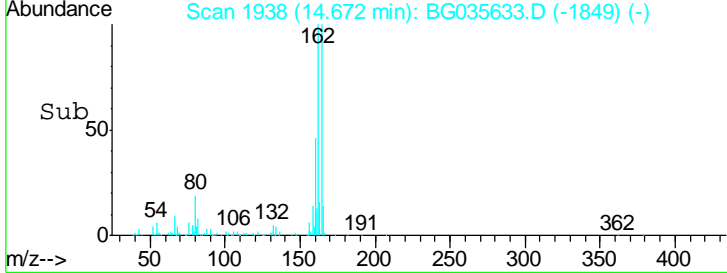
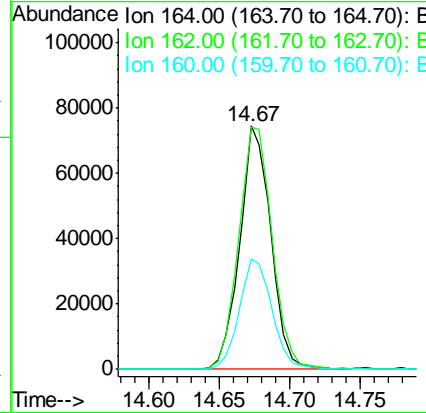
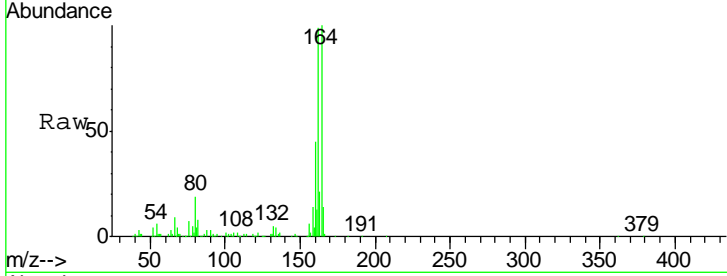




#38
 Acenaphthene-d10
 Concen: 20.000 ng
 RT: 14.67 min Scan# 1938
 Delta R.T. -0.01 min
 Lab File: BG035633.D
 Acq: 13 Jul 2018 17:28

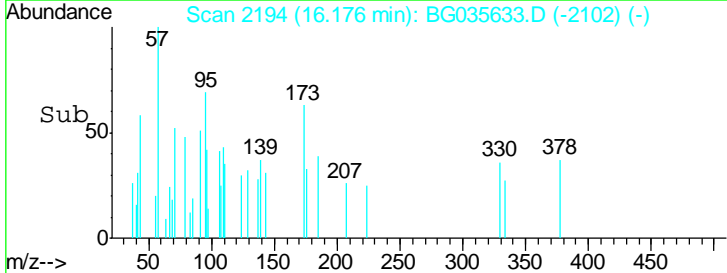
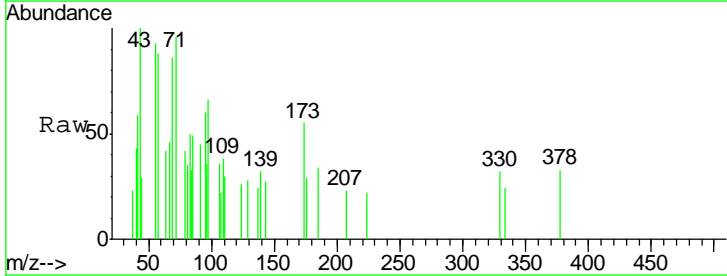
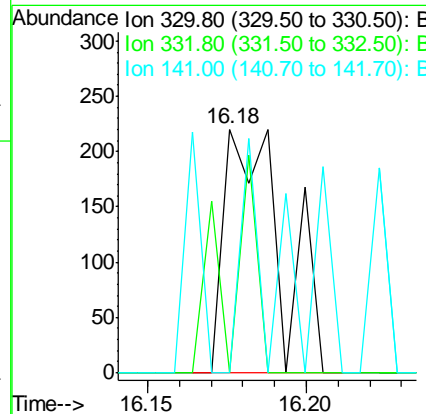
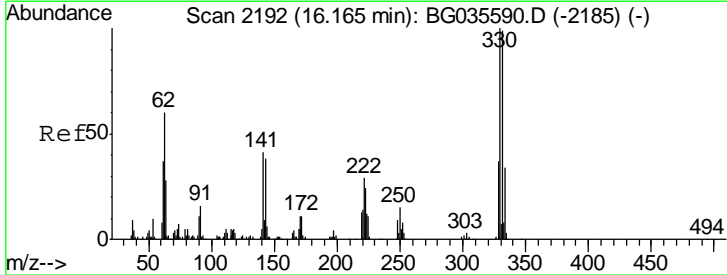
Instrument :
 BNA_G
ClientSampleId :
 CONTINGENCY-DUCK-BANK-CON

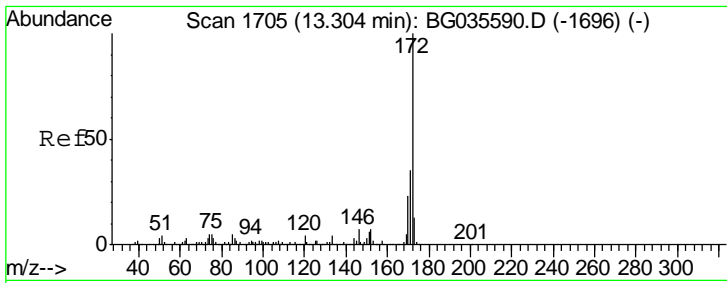
Tgt Ion	Resp	Lower	Upper
164	114459		
162	99.4	78.8	118.2
160	45.3	35.4	53.0



#41
 2,4,6-Tribromophenol
 Concen: 0.182 ng
 RT: 16.18 min Scan# 2194
 Delta R.T. 0.01 min
 Lab File: BG035633.D
 Acq: 13 Jul 2018 17:28

Tgt Ion	Resp	Lower	Upper
330	275		
332	20.0	77.0	115.6#
141	27.3	25.2	37.8

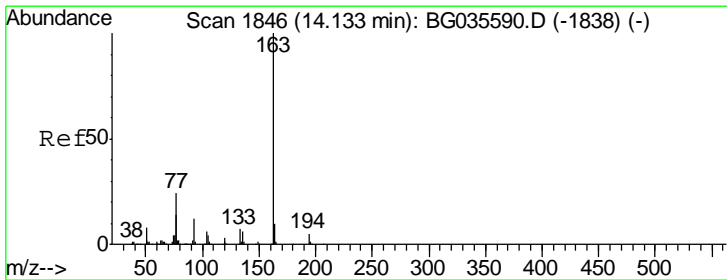
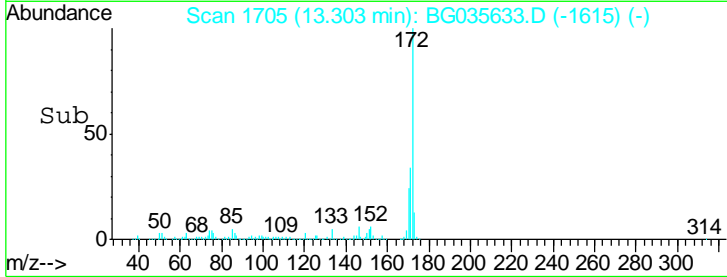
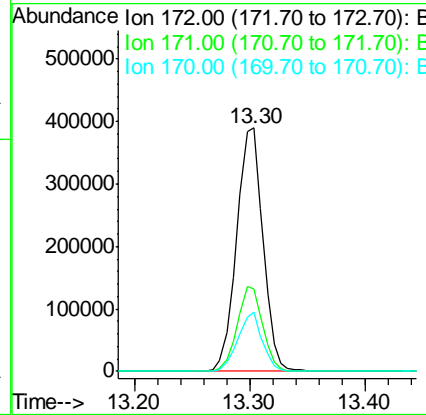
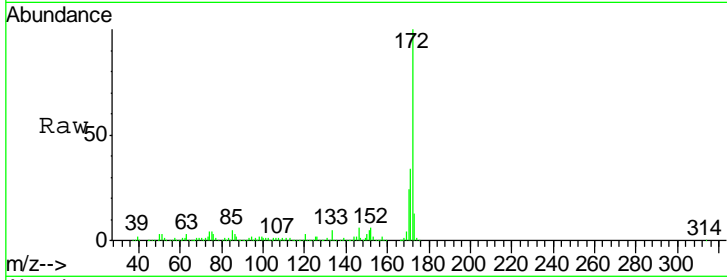




#44
 2-Fluorobiphenyl
 Concen: 72.062 ng
 RT: 13.30 min Scan# 1705
 Delta R.T. -0.00 min
 Lab File: BG035633.D
 Acq: 13 Jul 2018 17:28

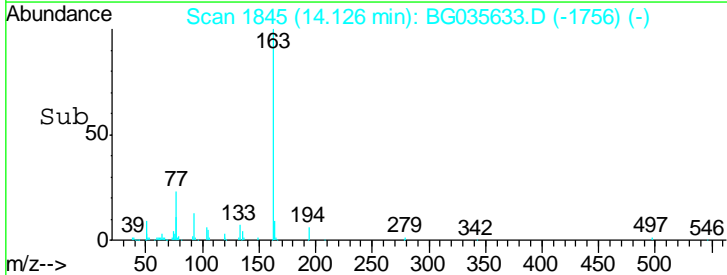
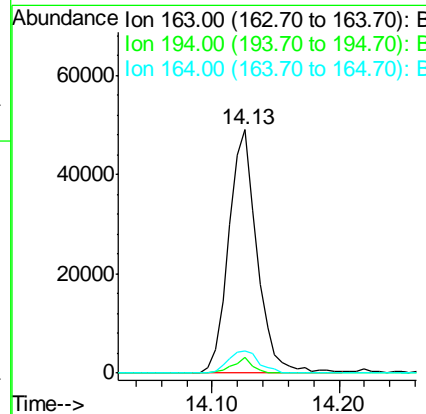
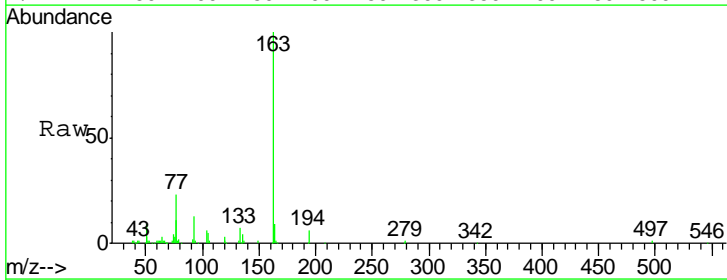
Instrument :
 BNA_G
 ClientSampleId :
 CONTINGENCY-DUCK-BANK-CON

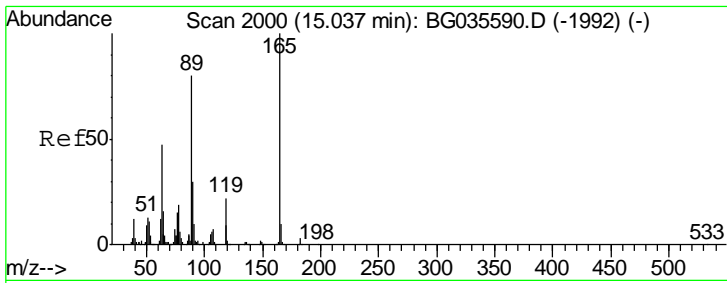
Tgt Ion	Resp	Lower	Upper
172	100		
171	34.0	30.0	45.0
170	24.2	19.5	29.3



#49
 Dimethylphthalate
 Concen: 7.559 ng
 RT: 14.13 min Scan# 1845
 Delta R.T. -0.01 min
 Lab File: BG035633.D
 Acq: 13 Jul 2018 17:28

Tgt Ion	Resp	Lower	Upper
163	100		
194	6.4	3.4	5.2#
164	9.1	8.2	12.4

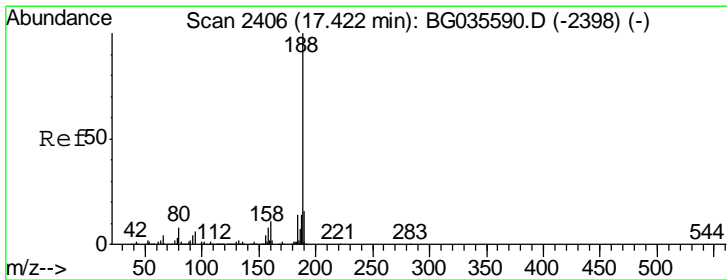
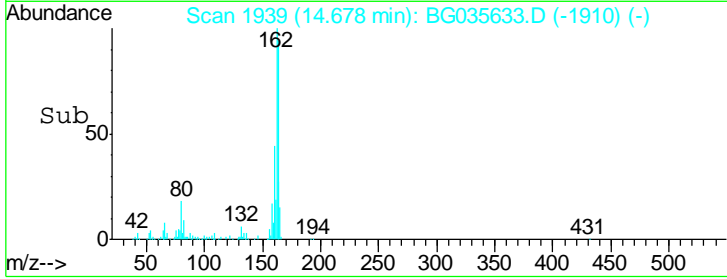
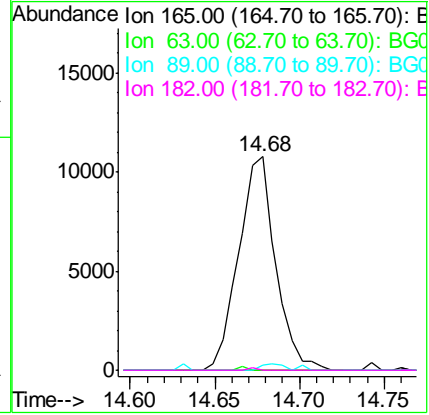
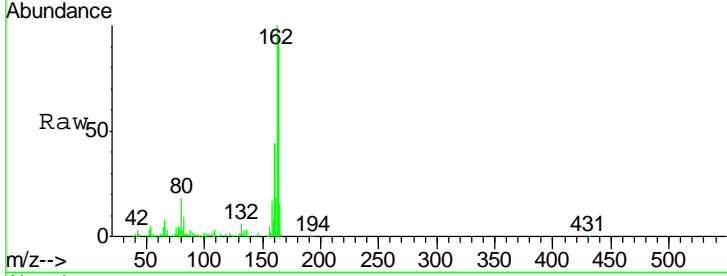




#56
 2,4-Dinitrotoluene
 Concen: 5.611 ng
 RT: 14.68 min Scan# 1939
 Delta R.T. -0.36 min
 Lab File: BG035633.D
 Acq: 13 Jul 2018 17:28

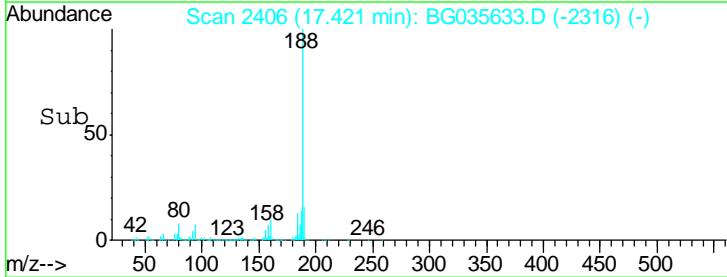
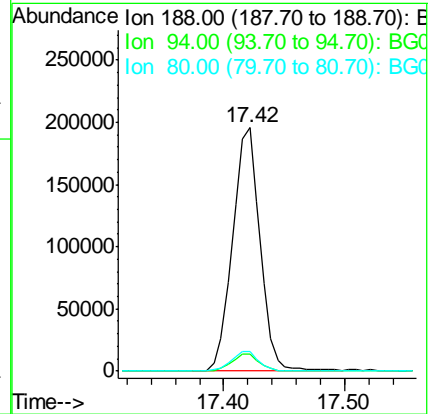
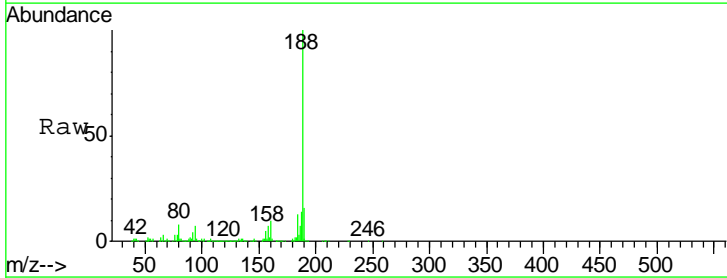
Instrument :
 BNA_G
ClientSampleId :
 CONTINGENCY-DUCK-BANK-CON

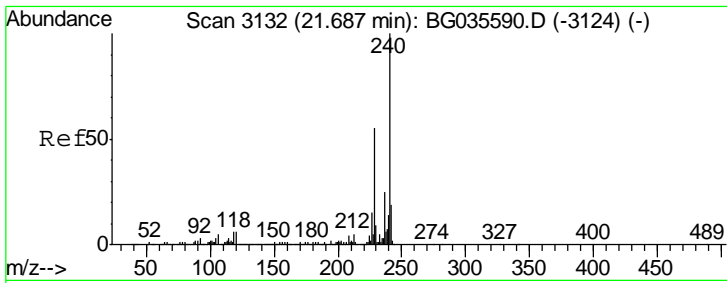
Tgt Ion	Resp	Lower	Upper
165	16439		
63	0.0	42.0	63.0#
89	2.1	66.9	100.3#
182	0.0	2.6	3.8#



#63
 Phenanthrene-d10
 Concen: 20.000 ng
 RT: 17.42 min Scan# 2406
 Delta R.T. -0.00 min
 Lab File: BG035633.D
 Acq: 13 Jul 2018 17:28

Tgt Ion	Resp	Lower	Upper
188	309232		
94	6.8	6.9	10.3#
80	8.0	7.7	11.5

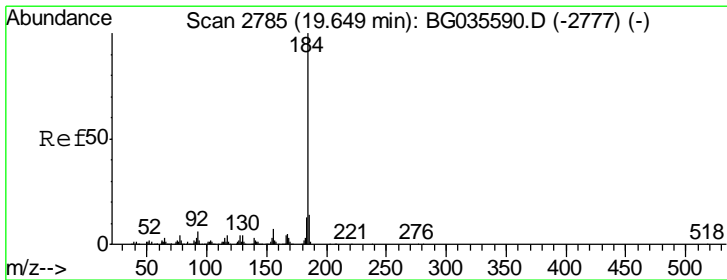
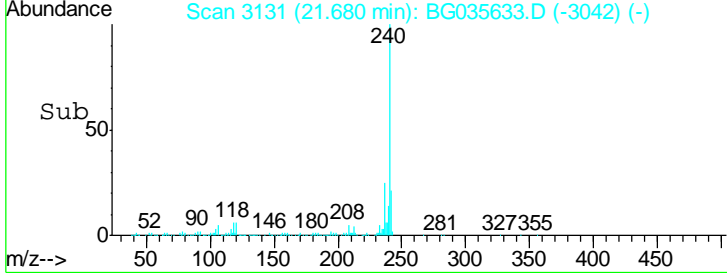
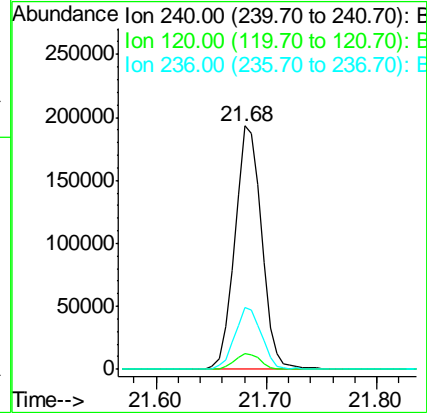
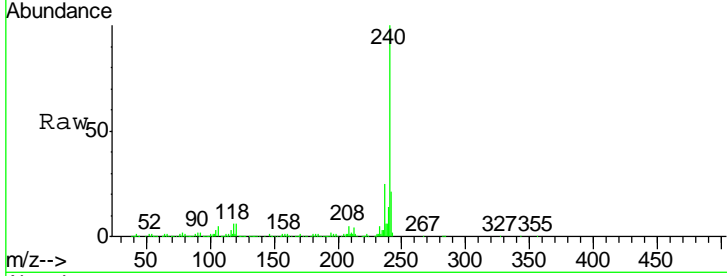




#75
 Chrysene-d12
 Concen: 20.000 ng
 RT: 21.68 min Scan# 3131
 Delta R.T. -0.01 min
 Lab File: BG035633.D
 Acq: 13 Jul 2018 17:28

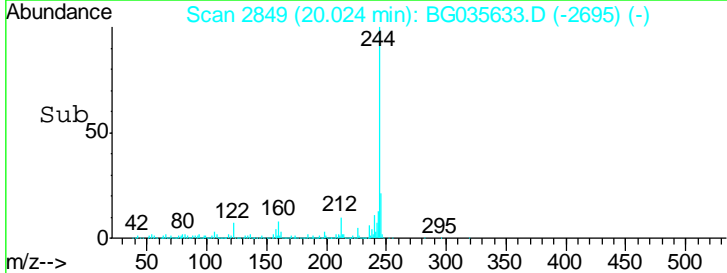
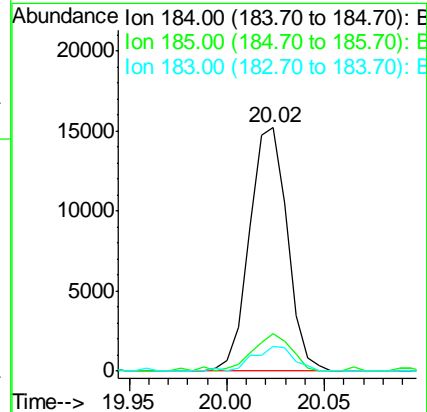
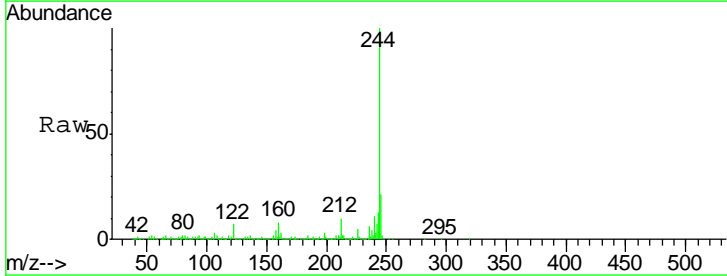
Instrument :
 BNA_G
 ClientSampleId :
 CONTINGENCY-DUCK-BANK-CON

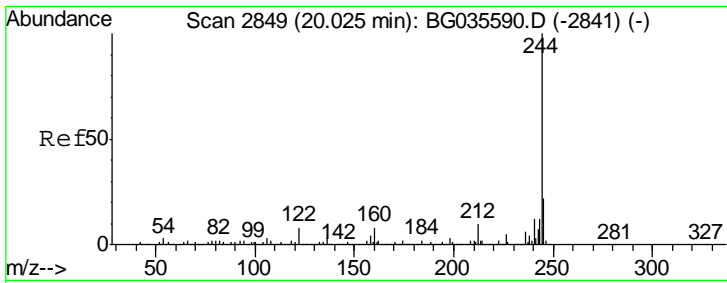
Tgt Ion	Resp	Lower	Upper
240	100		
120	6.4	6.8	10.2#
236	25.5	20.9	31.3



#76
 Benzidine
 Concen: 2.346 ng
 RT: 20.02 min Scan# 2849
 Delta R.T. 0.38 min
 Lab File: BG035633.D
 Acq: 13 Jul 2018 17:28

Tgt Ion	Resp	Lower	Upper
184	100		
185	15.5	11.1	16.7
183	9.9	10.6	16.0#



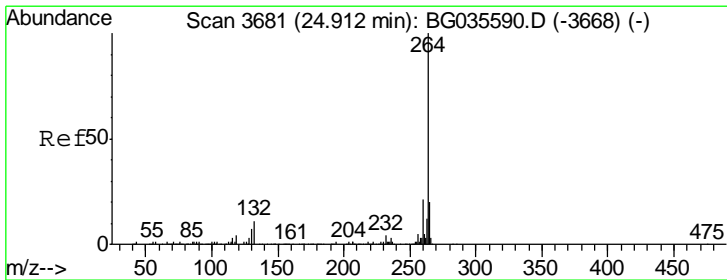
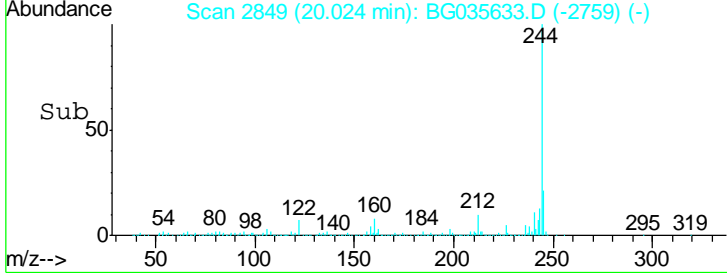
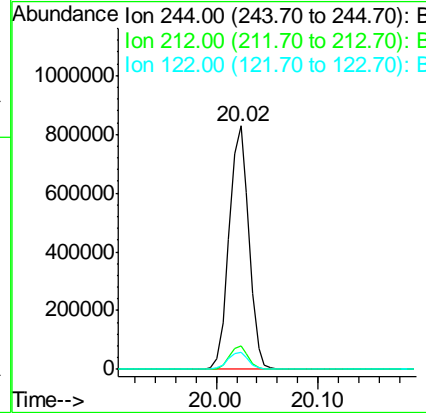
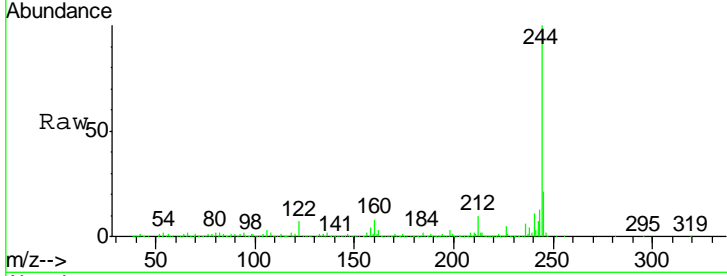


#78
 Terphenyl-d14
 Concen: 74.875 ng
 RT: 20.02 min Scan# 2849
 Delta R.T. -0.00 min
 Lab File: BG035633.D
 Acq: 13 Jul 2018 17:28

Instrument :
 BNA_G
ClientSampled :
 CONTINGENCY-DUCK-BANK-CON

Tgt Ion: 244 Resp: 1119610

Ion	Ratio	Lower	Upper
244	100		
212	9.7	5.8	8.8#
122	7.1	7.0	10.4



#86
 Perylene-d12
 Concen: 20.000 ng
 RT: 24.91 min Scan# 3680
 Delta R.T. -0.01 min
 Lab File: BG035633.D
 Acq: 13 Jul 2018 17:28

Tgt Ion: 264 Resp: 318240

Ion	Ratio	Lower	Upper
264	100		
260	24.7	17.4	26.0
265	19.6	17.7	26.5

