

Data Path : Z:\svoasrv\HPCHEM1\BNA_G\Data\BG071421\
 Data File : BG049339.D
 Acq On : 14 Jul 2021 21:34
 Operator : CG/JU
 Sample : M2971-09
 Misc :
 ALS Vial : 15 Sample Multiplier: 1

Instrument :
 BNA_G
 ClientSampled :
 BGE91

Integration Parameters: LSCINT.P

Integrator: RTE
 Smoothing : OFF
 Sampling : 1
 Start Thrs : 0.2
 Stop Thrs : 0

Filtering: 5
 Min Area: 0.1 % of largest Peak
 Max Peaks: 100
 Peak Location: TOP

If leading or trailing edge < 100 prefer < Baseline drop else tangent >
 Peak separation: 5

Method : Z:\SVOASRV\HPCHEM1\BNA_G\METHODS\SFAM-EPA-BG070921.M
 Title : SVOA CALIBRATION

Signal : TIC: BG049339.D

peak #	R.T. min	first scan	max scan	last scan	PK TY	peak height	corr. area	corr. % max.	% of total
1	3.106	5	11	20	rBV2	55106	134953	7.30%	1.073%
2	3.188	20	25	37	rVV3	44391	85782	4.64%	0.682%
3	3.282	39	41	48	rVB5	3220	4815	0.26%	0.038%
4	3.452	68	70	80	rVB4	8002	16142	0.87%	0.128%
5	3.758	118	122	124	rBV4	3120	3941	0.21%	0.031%
6	3.881	140	143	158	rBV	78089	159495	8.63%	1.268%
7	4.228	195	202	208	rVB3	2801	6910	0.37%	0.055%
8	7.218	704	711	720	rBV	152608	271812	14.71%	2.161%
9	7.383	732	739	747	rBV	89048	153023	8.28%	1.217%
10	7.595	766	775	784	rBV	139199	242075	13.10%	1.925%
11	8.065	848	855	862	rBV	121829	205589	11.13%	1.635%
12	8.770	968	975	986	rVB2	187101	332488	17.99%	2.644%
13	9.234	1046	1054	1066	rVB	141786	260312	14.09%	2.070%
14	9.956	1168	1177	1185	rBV2	136452	245730	13.30%	1.954%
15	10.503	1262	1270	1279	rBV	194884	353252	19.12%	2.809%
16	10.650	1288	1295	1300	rBV	21166	38369	2.08%	0.305%
17	10.885	1328	1335	1343	rVB	162478	282715	15.30%	2.248%
18	11.014	1351	1357	1366	rBV	161862	302692	16.38%	2.407%
19	12.459	1599	1603	1604	rBV3	2922	3062	0.17%	0.024%
20	13.311	1745	1748	1753	rVB	3332	3982	0.22%	0.032%
21	13.540	1780	1787	1793	rBV5	2074	4969	0.27%	0.040%
22	14.110	1877	1884	1891	rVB	341259	515515	27.90%	4.099%
23	14.345	1921	1924	1928	rBV3	2468	4484	0.24%	0.036%
24	14.404	1928	1934	1942	rVB	354663	558919	30.25%	4.444%
25	14.710	1980	1986	1994	rVB	257793	406028	21.97%	3.229%
26	14.909	2013	2020	2031	rBV	128978	233007	12.61%	1.853%
27	15.703	2148	2155	2164	rVB	448345	694979	37.61%	5.526%
28	15.814	2168	2174	2184	rBV	124766	186416	10.09%	1.482%
29	15.944	2190	2196	2202	rBV6	6535	10288	0.56%	0.082%
30	16.484	2283	2288	2293	rVB6	6723	10587	0.57%	0.084%
31	16.584	2298	2305	2310	rVB7	2767	5179	0.28%	0.041%
32	16.684	2319	2322	2326	rVB3	2330	3552	0.19%	0.028%
33	16.842	2345	2349	2353	rVV3	5237	7256	0.39%	0.058%
34	17.195	2404	2409	2415	rBV6	9259	15430	0.84%	0.123%
35	17.459	2448	2454	2461	rBV	328759	502603	27.20%	3.996%
36	17.559	2461	2471	2481	rVB	492993	764644	41.38%	6.080%

Data Path : Z:\svoasrv\HPCHEM1\BNA_G\Data\BG071421\
 Data File : BG049339.D
 Acq On : 14 Jul 2021 21:34
 Operator : CG/JU
 Sample : M2971-09
 Misc :
 ALS Vial : 15 Sample Multiplier: 1

Instrument :
 BNA_G
 ClientSampled :
 BGE91

Integration Parameters: LSCINT.P
 Integrator: RTE
 Smoothing : OFF Filtering: 5
 Sampling : 1 Min Area: 0.1 % of largest Peak
 Start Thrs: 0.2 Max Peaks: 100
 Stop Thrs : 0 Peak Location: TOP

If leading or trailing edge < 100 prefer < Baseline drop else tangent >
 Peak separation: 5

Method : Z:\SVOASRV\HPCHEM1\BNA_G\METHODS\SFAM-EPA-BG070921.M
 Title : SVOA CALIBRATION

37	17.759	2504	2505	2510	rVV4	2297	3191	0.17%	0.025%
38	17.841	2514	2519	2521	rVB3	1894	2999	0.16%	0.024%
39	18.094	2557	2562	2563	rBV2	2139	3311	0.18%	0.026%
40	18.123	2563	2567	2570	rVV4	4198	5923	0.32%	0.047%
41	18.341	2597	2604	2611	rBV2	25845	39780	2.15%	0.316%
42	18.411	2614	2616	2620	rVB2	3185	3948	0.21%	0.031%
43	18.776	2671	2678	2683	rBV	121242	174489	9.44%	1.387%
44	18.946	2702	2707	2709	rBV4	3296	4696	0.25%	0.037%
45	19.193	2745	2749	2753	rVB5	3742	6854	0.37%	0.054%
46	19.228	2753	2755	2759	rBV5	3303	4444	0.24%	0.035%
47	19.410	2782	2786	2792	rVB5	7060	10431	0.56%	0.083%
48	19.475	2794	2797	2803	rBV2	6273	11014	0.60%	0.088%
49	19.604	2816	2819	2823	rBV3	5133	5848	0.32%	0.046%
50	19.845	2854	2860	2867	rVB	584581	858267	46.45%	6.824%
51	20.333	2939	2943	2945	rBV5	5080	6890	0.37%	0.055%
52	20.368	2947	2949	2952	rVV4	4255	4498	0.24%	0.036%
53	20.603	2984	2989	2993	rBV7	4338	7981	0.43%	0.063%
54	20.744	3010	3013	3016	rBV5	5715	6601	0.36%	0.052%
55	20.820	3020	3026	3031	rBV	1595376	1847778	100.00%	14.692%
56	21.055	3065	3066	3069	rVV3	5573	5401	0.29%	0.043%
57	21.096	3071	3073	3080	rVB7	5399	7764	0.42%	0.062%
58	21.367	3114	3119	3126	rBV2	70728	117444	6.36%	0.934%
59	21.437	3127	3131	3134	rVB5	6401	9650	0.52%	0.077%
60	21.508	3141	3143	3146	rVB4	2970	2833	0.15%	0.023%
61	21.696	3172	3175	3176	rBV2	3843	4492	0.24%	0.036%
62	21.743	3176	3183	3190	rVV	329670	539595	29.20%	4.291%
63	22.377	3289	3291	3293	rBV3	3395	3208	0.17%	0.026%
64	22.565	3317	3323	3330	rBV8	23177	52922	2.86%	0.421%
65	23.123	3416	3418	3423	rBV5	3417	4395	0.24%	0.035%
66	23.253	3437	3440	3441	rBV3	5324	5377	0.29%	0.043%
67	23.447	3471	3473	3480	rVB8	6158	9946	0.54%	0.079%
68	23.523	3483	3486	3487	rBV3	3749	4071	0.22%	0.032%
69	23.940	3552	3557	3562	rVB8	14197	27920	1.51%	0.222%
70	24.081	3576	3581	3588	rVB5	12733	27949	1.51%	0.222%
71	24.140	3589	3591	3592	rBV2	4141	3038	0.16%	0.024%
72	24.463	3644	3646	3648	rBV3	3129	3082	0.17%	0.025%
73	24.804	3693	3704	3718	rVB	305997	854241	46.23%	6.792%
74	24.898	3718	3720	3721	rBV2	2926	2734	0.15%	0.022%
75	24.939	3725	3727	3728	rVB2	4443	2865	0.16%	0.023%
76	25.033	3732	3743	3761	rVB2	196631	606211	32.81%	4.820%

Data Path : Z:\svoasrv\HPCHEM1\BNA_G\Data\BG071421\
 Data File : BG049339.D
 Acq On : 14 Jul 2021 21:34
 Operator : CG/JU
 Sample : M2971-09
 Misc :
 ALS Vial : 15 Sample Multiplier: 1

Instrument :
 BNA_G
 ClientSampleId :
 BGE91

Integration Parameters: LSCINT.P

Integrator: RTE
 Smoothing : OFF Filtering: 5
 Sampling : 1 Min Area: 0.1 % of largest Peak
 Start Thrs: 0.2 Max Peaks: 100
 Stop Thrs : 0 Peak Location: TOP

If leading or trailing edge < 100 prefer < Baseline drop else tangent >
 Peak separation: 5

Method : Z:\SVOASRV\HPCHEM1\BNA_G\METHODS\SFAM-EPA-BG070921.M
 Title : SVOA CALIBRATION

77	25.356	3796	3798	3801	rBV4	2831	3894	0.21%	0.031%
78	25.585	3835	3837	3839	rBV3	4186	4650	0.25%	0.037%
79	26.226	3937	3946	3953	rVB9	16804	49601	2.68%	0.394%
80	26.349	3957	3967	3970	rBV8	12955	32080	1.74%	0.255%
81	27.025	4080	4082	4083	rBV2	3619	3210	0.17%	0.026%
82	27.078	4089	4091	4092	rBV2	3723	3519	0.19%	0.028%
83	27.600	4173	4180	4181	rVV7	15494	22134	1.20%	0.176%
84	27.618	4181	4183	4192	rVB9	17861	33550	1.82%	0.267%
85	27.959	4238	4241	4243	rBV4	4215	5020	0.27%	0.040%
86	28.505	4331	4334	4336	rBV4	4273	4957	0.27%	0.039%
87	28.546	4339	4341	4344	rBV4	2682	2777	0.15%	0.022%
88	28.981	4413	4415	4418	rBV4	3361	3836	0.21%	0.031%
89	29.298	4460	4469	4470	rBV8	10218	23133	1.25%	0.184%
90	29.451	4492	4495	4497	rBV4	3289	3977	0.22%	0.032%
91	30.033	4590	4594	4595	rBV4	4207	6240	0.34%	0.050%
92	30.098	4602	4605	4607	rBV4	3450	5034	0.27%	0.040%
93	30.239	4626	4629	4630	rBV2	3202	3843	0.21%	0.031%
94	30.350	4646	4648	4649	rBV2	3028	2763	0.15%	0.022%
95	30.409	4656	4658	4661	rBV4	4473	4940	0.27%	0.039%
96	31.190	4789	4791	4793	rBV3	3944	3805	0.21%	0.030%
97	31.279	4802	4806	4807	rBV4	6341	6902	0.37%	0.055%
98	31.807	4895	4896	4899	rBV3	3167	3607	0.20%	0.029%
99	32.060	4937	4939	4940	rVB2	4886	2950	0.16%	0.023%
100	32.583	5025	5028	5031	rBV4	3626	4867	0.26%	0.039%

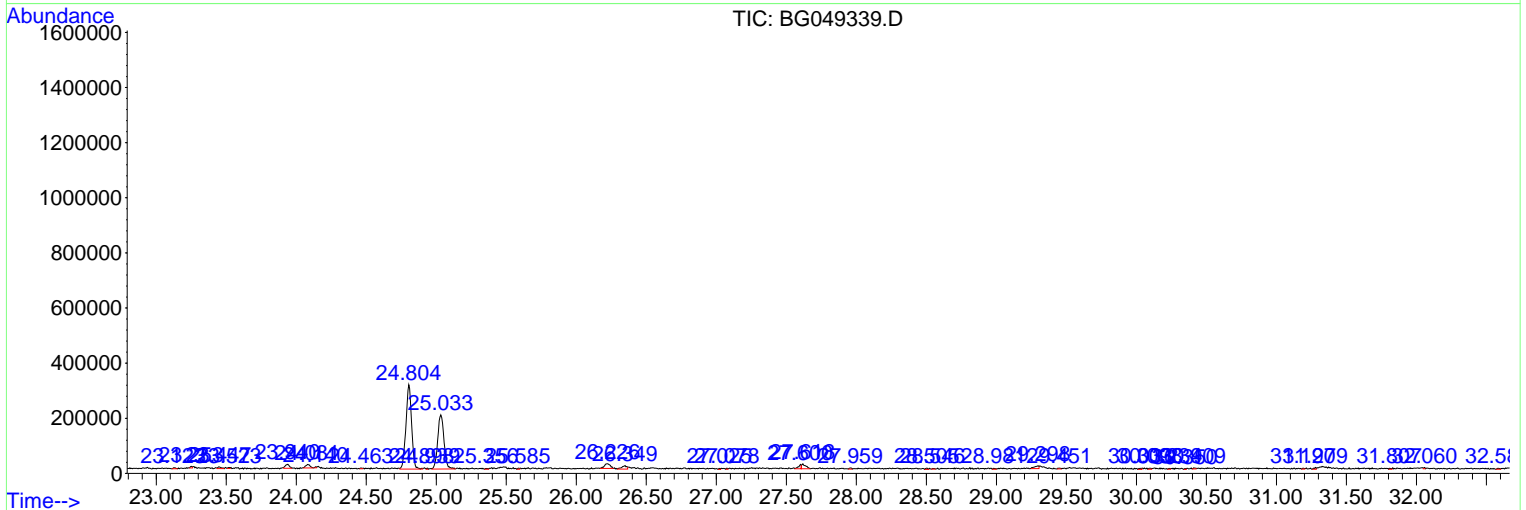
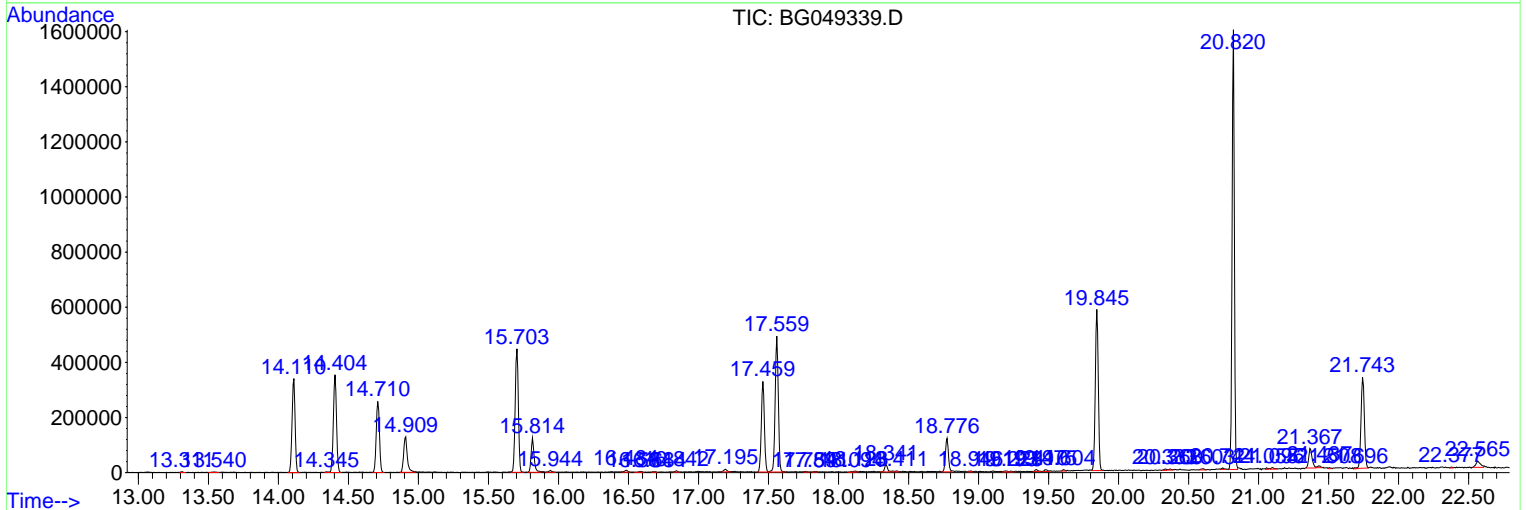
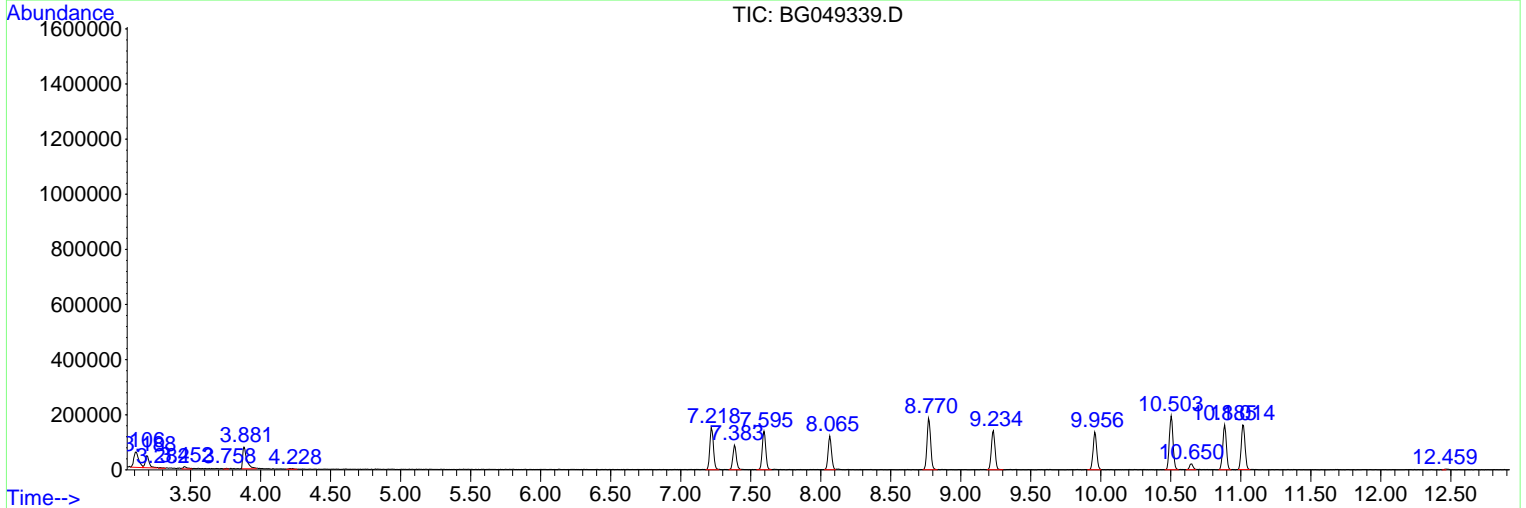
Sum of corrected areas: 12576365

Data Path : Z:\svoasrv\HPCHEM1\BNA_G\Data\BG071421\
 Data File : BG049339.D
 Acq On : 14 Jul 2021 21:34
 Operator : CG/JU
 Sample : M2971-09
 Misc :
 ALS Vial : 15 Sample Multiplier: 1

Instrument :
 BNA_G
 ClientSampleId :
 BGE91

Quant Method : Z:\SVOASRV\HPCHEM1\BNA_G\METHODS\SFAM-EPA-BG070921.M
 Quant Title : SVOA CALIBRATION

TIC Library : C:\DATABASE\NIST11.L
 TIC Integration Parameters: LSCINT.P



Data Path : Z:\svoasrv\HPCHEM1\BNA_G\Data\BG071421\
 Data File : BG049339.D
 Acq On : 14 Jul 2021 21:34
 Operator : CG/JU
 Sample : M2971-09
 Misc :
 ALS Vial : 15 Sample Multiplier: 1

Instrument :
 BNA_G
 ClientSampled :
 BGE91

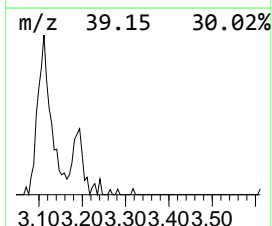
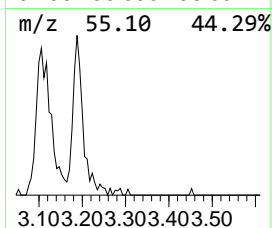
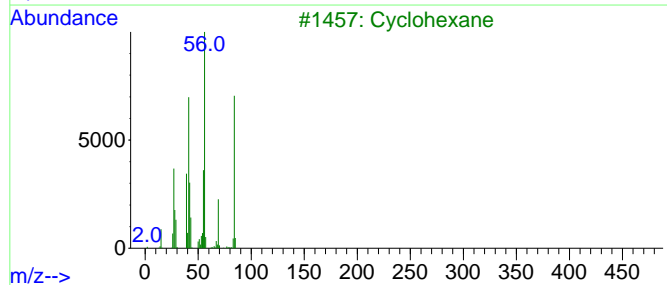
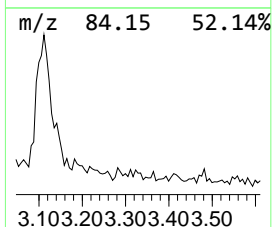
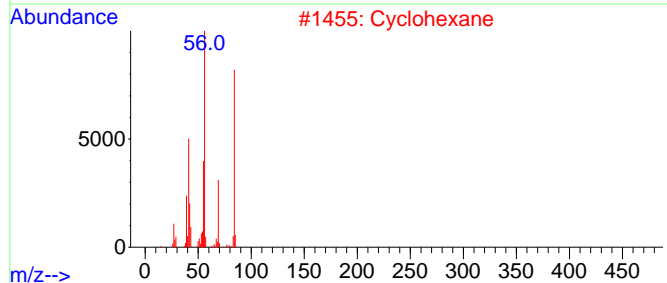
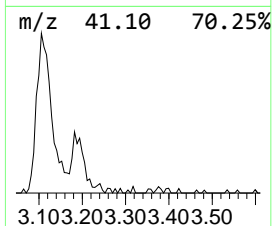
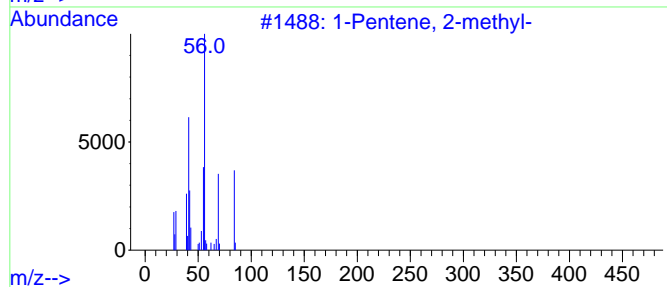
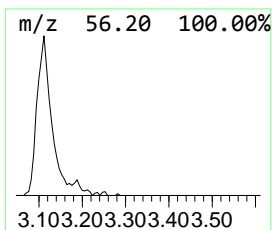
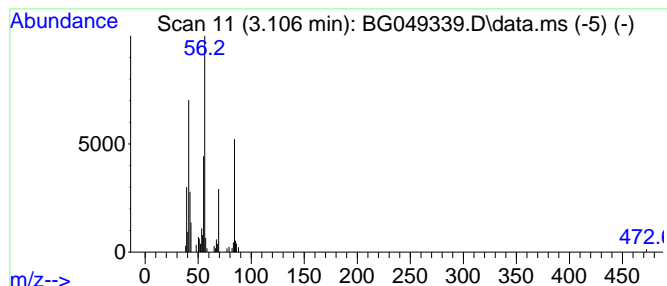
Quant Method : Z:\SVOASRV\HPCHEM1\BNA_G\METHODS\SFAM-EPA-BG070921.M
 Quant Title : SVOA CALIBRATION

TIC Library : C:\DATABASE\NIST11.L
 TIC Integration Parameters: LSCINT.P

 Peak Number 1 (DEL) Alkane: Straight-Chai... Concentration Rank 2

R.T.	EstConc	Area	Relative to ISTD	R.T.
3.110	13.13 ng/ul	134953	1,4-Dichlorobenzene-d4	8.065

Hit#	of 5	Tentative ID	MW	MolForm	CAS#	Qual
1		1-Pentene, 2-methyl-	84	C6H12	000763-29-1	90
2		Cyclohexane	84	C6H12	000110-82-7	90
3		Cyclohexane	84	C6H12	000110-82-7	87
4		1-Pentene, 2-methyl-	84	C6H12	000763-29-1	87
5		1-Pentene, 2-methyl-	84	C6H12	000763-29-1	86



Data Path : Z:\svoasrv\HPCHEM1\BNA_G\Data\BG071421\
 Data File : BG049339.D
 Acq On : 14 Jul 2021 21:34
 Operator : CG/JU
 Sample : M2971-09
 Misc :
 ALS Vial : 15 Sample Multiplier: 1

Instrument :
 BNA_G
 ClientSampleId :
 BGE91

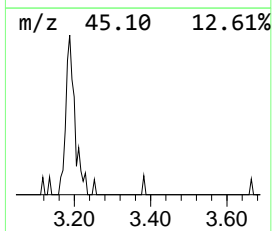
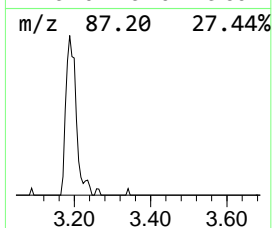
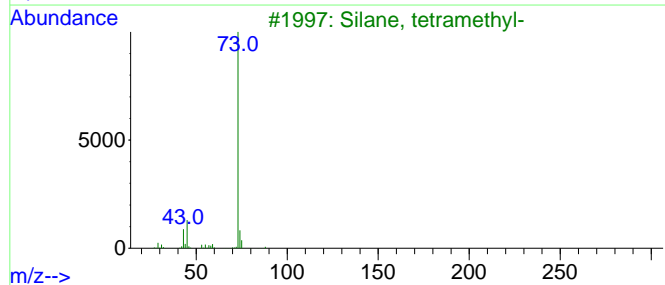
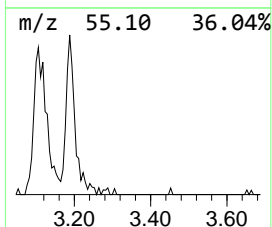
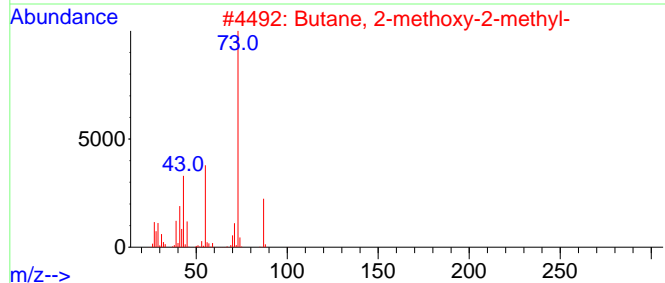
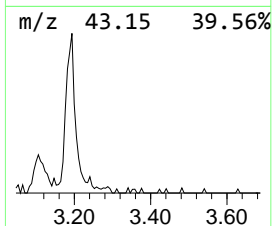
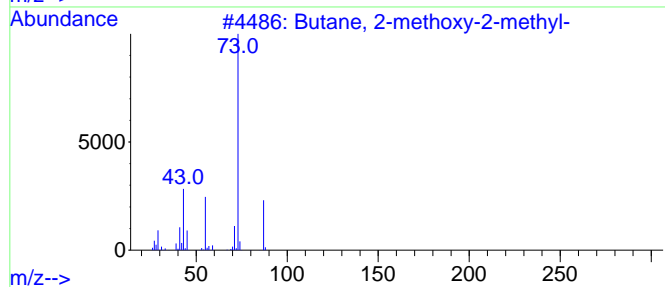
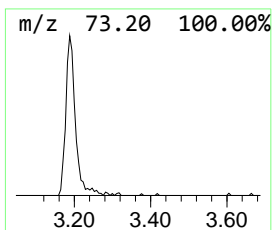
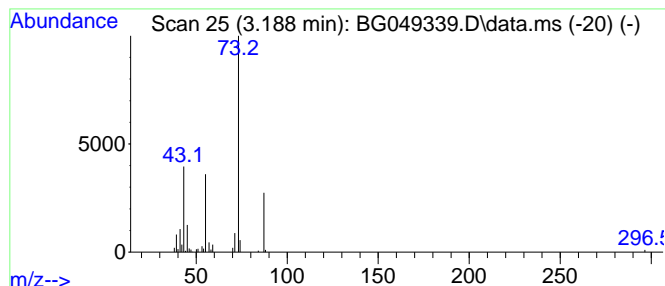
Quant Method : Z:\SVOASRV\HPCHEM1\BNA_G\METHODS\SFAM-EPA-BG070921.M
 Quant Title : SVOA CALIBRATION

TIC Library : C:\DATABASE\NIST11.L
 TIC Integration Parameters: LSCINT.P

 Peak Number 2 Butane, 2-methoxy-2-methyl- Concentration Rank 3

R.T.	EstConc	Area	Relative to ISTD	R.T.
3.190	8.35 ng/ul	85782	1,4-Dichlorobenzene-d4	8.065

Hit#	of	5	Tentative ID	MW	MolForm	CAS#	Qual
1			Butane, 2-methoxy-2-methyl-	102	C6H14O	000994-05-8	59
2			Butane, 2-methoxy-2-methyl-	102	C6H14O	000994-05-8	39
3			Silane, tetramethyl-	88	C4H12Si	000075-76-3	38
4			1,3-Dioxolane, 2-methyl-	88	C4H8O2	000497-26-7	25
5			3-Pentanol, 2,4-dimethyl-	116	C7H16O	000600-36-2	23



Data Path : Z:\svoasrv\HPCHEM1\BNA_G\Data\BG071421\
 Data File : BG049339.D
 Acq On : 14 Jul 2021 21:34
 Operator : CG/JU
 Sample : M2971-09
 Misc :
 ALS Vial : 15 Sample Multiplier: 1

Instrument :
 BNA_G
 ClientSampleId :
 BGE91

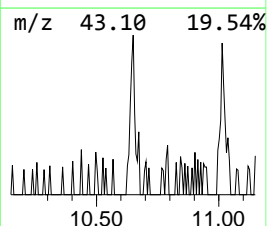
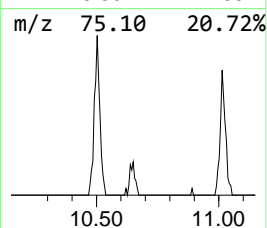
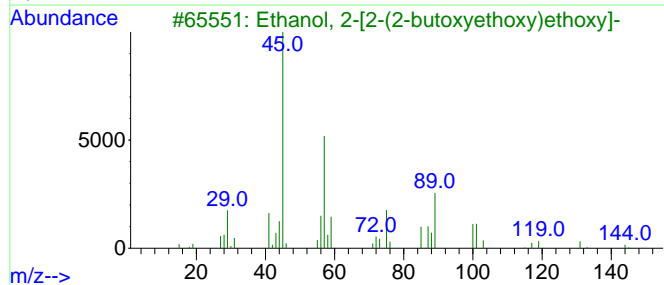
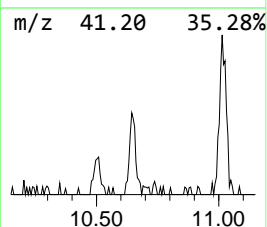
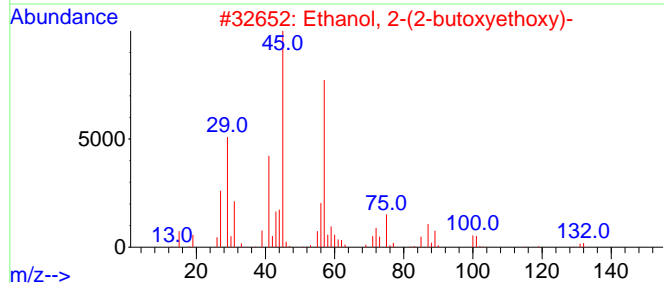
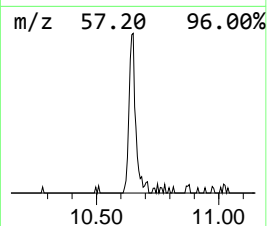
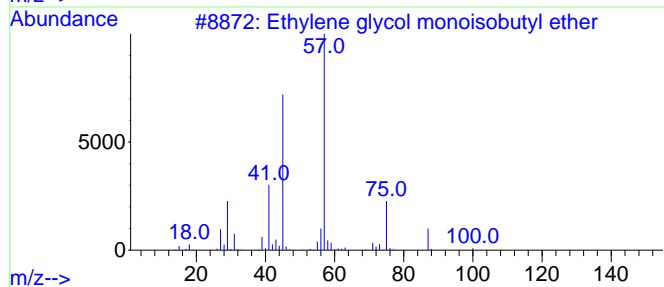
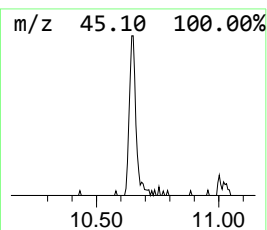
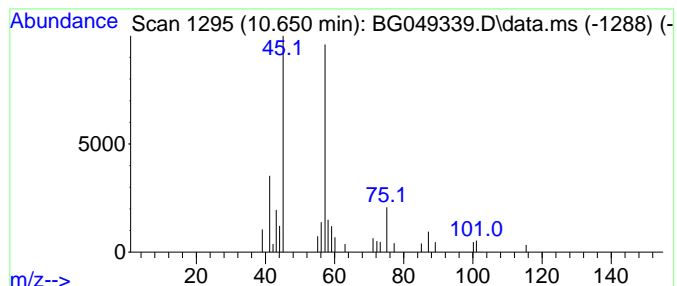
Quant Method : Z:\SVOASRV\HPCHEM1\BNA_G\METHODS\SFAM-EPA-BG070921.M
 Quant Title : SVOA CALIBRATION

TIC Library : C:\DATABASE\NIST11.L
 TIC Integration Parameters: LSCINT.P

 Peak Number 3 Ethylene glycol monoisobuty... Concentration Rank 6

R.T.	EstConc	Area	Relative to ISTD	R.T.
10.650	2.71 ng/ul	38369	Naphthalene-d8	10.885

Hit#	of	5	Tentative ID	MW	MolForm	CAS#	Qual
1			Ethylene glycol monoisobutyl ether	118	C6H14O2	004439-24-1	50
2			Ethanol, 2-(2-butoxyethoxy)-	162	C8H18O3	000112-34-5	47
3			Ethanol, 2-[2-(2-butoxyethoxy)et...]	206	C10H22O4	000143-22-6	45
4			2-Propanol, 1-(1-methylethoxy)-	118	C6H14O2	003944-36-3	42
5			Butane, 1-(1-methylpropoxy)-	130	C8H18O	000999-65-5	42



Data Path : Z:\svoasrv\HPCHEM1\BNA_G\Data\BG071421\
 Data File : BG049339.D
 Acq On : 14 Jul 2021 21:34
 Operator : CG/JU
 Sample : M2971-09
 Misc :
 ALS Vial : 15 Sample Multiplier: 1

Instrument :
 BNA_G
 ClientSampled :
 BGE91

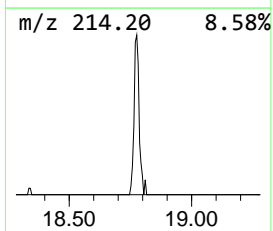
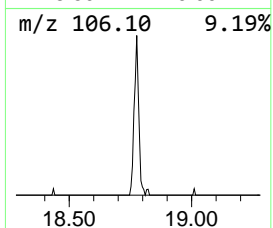
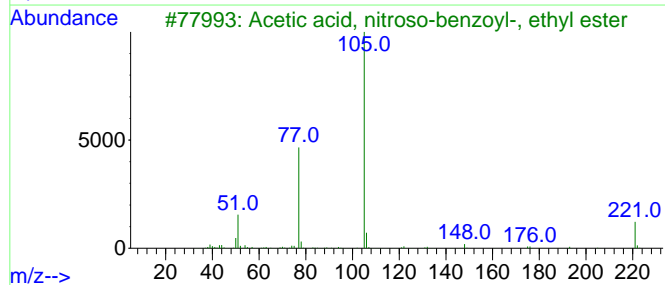
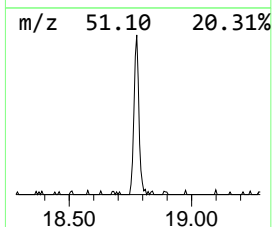
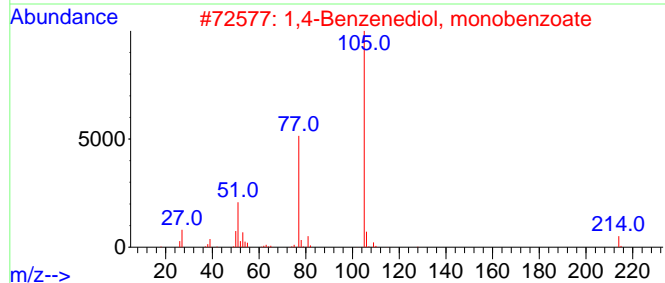
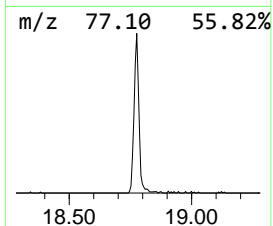
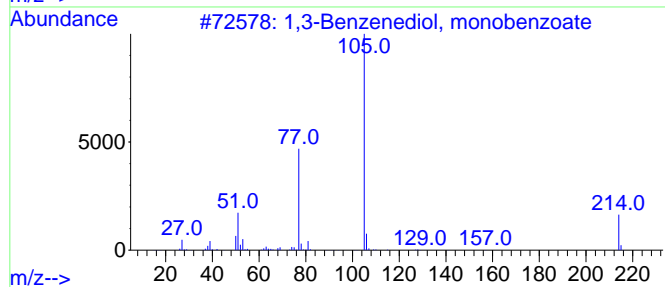
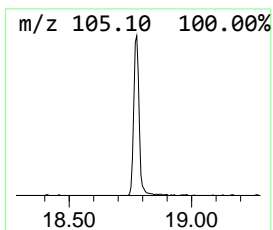
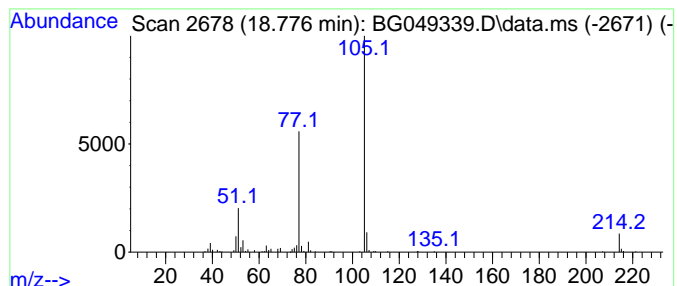
Quant Method : Z:\SVOASRV\HPCHEM1\BNA_G\METHODS\SFAM-EPA-BG070921.M
 Quant Title : SVOA CALIBRATION

TIC Library : C:\DATABASE\NIST11.L
 TIC Integration Parameters: LSCINT.P

 Peak Number 4 1,3-Benzenediol, monobenzoate Concentration Rank 4

R.T.	EstConc	Area	Relative to ISTD	R.T.
18.780	6.94 ng/ul	174489	Phenanthrene-d10	17.459

Hit#	of	5	Tentative ID	MW	MolForm	CAS#	Qual
1			1,3-Benzenediol, monobenzoate	214	C13H10O3	000136-36-7	91
2			1,4-Benzenediol, monobenzoate	214	C13H10O3	002444-19-1	80
3			Acetic acid, nitroso-benzoyl-, e...	221	C11H11NO4	1000261-71-7	72
4			2,5-Cyclohexadiene-1,4-dione, 5-...	289	C15H12ClNO3	324051-60-7	72
5			N-(4-Fluorophenyl)-.alpha.-phene...	215	C14H14FN	148254-55-1	72



Data Path : Z:\svoasrv\HPCHEM1\BNA_G\Data\BG071421\
 Data File : BG049339.D
 Acq On : 14 Jul 2021 21:34
 Operator : CG/JU
 Sample : M2971-09
 Misc :
 ALS Vial : 15 Sample Multiplier: 1

Instrument :
 BNA_G
 ClientSampleId :
 BGE91

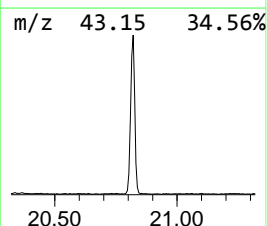
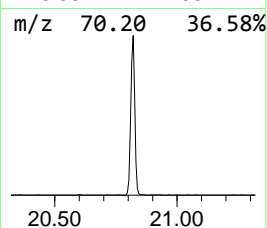
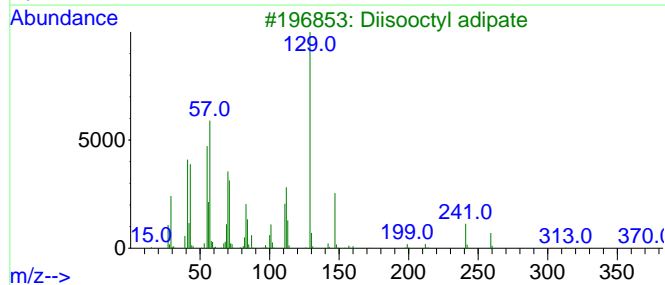
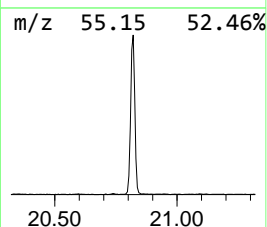
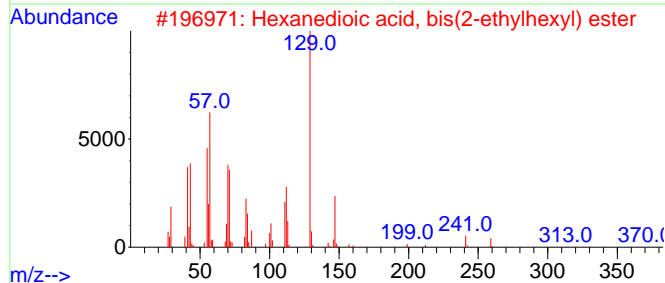
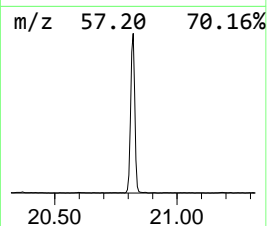
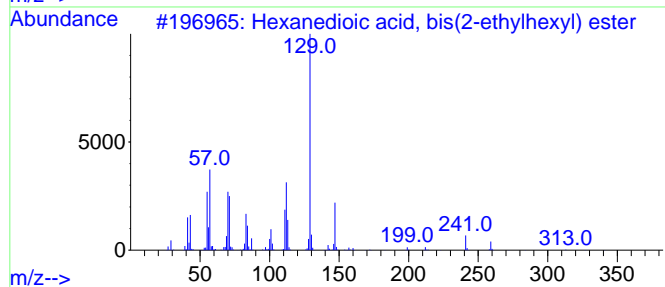
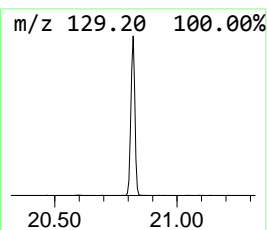
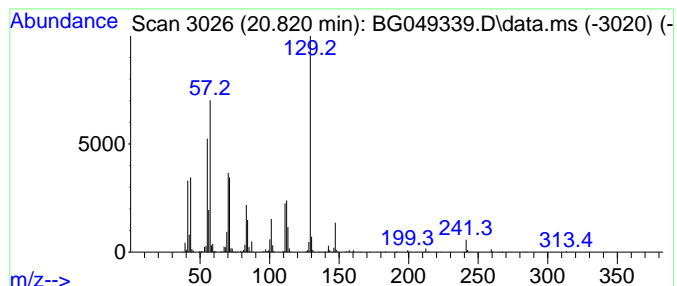
Quant Method : Z:\SVOASRV\HPCHEM1\BNA_G\METHODS\SFAM-EPA-BG070921.M
 Quant Title : SVOA CALIBRATION

TIC Library : C:\DATABASE\NIST11.L
 TIC Integration Parameters: LSCINT.P

 Peak Number 5 Hexanedioic acid, bis(2-eth... Concentration Rank 1

R.T.	EstConc	Area	Relative to ISTD	R.T.
20.820	68.49 ng/ul	1847780	Chrysene-d12	21.743

Hit#	of	5	Tentative ID	MW	MolForm	CAS#	Qual
1			Hexanedioic acid, bis(2-ethylhex...	370	C22H42O4	000103-23-1	91
2			Hexanedioic acid, bis(2-ethylhex...	370	C22H42O4	000103-23-1	91
3			Diisooctyl adipate	370	C22H42O4	001330-86-5	91
4			Hexanedioic acid, bis(2-ethylhex...	370	C22H42O4	000103-23-1	72
5			Adipic acid, di(oct-4-yl ester)	370	C22H42O4	1000160-80-1	64



Data Path : Z:\svoasrv\HPCHEM1\BNA_G\Data\BG071421\
 Data File : BG049339.D
 Acq On : 14 Jul 2021 21:34
 Operator : CG/JU
 Sample : M2971-09
 Misc :
 ALS Vial : 15 Sample Multiplier: 1

Instrument :
 BNA_G
 ClientSampled :
 BGE91

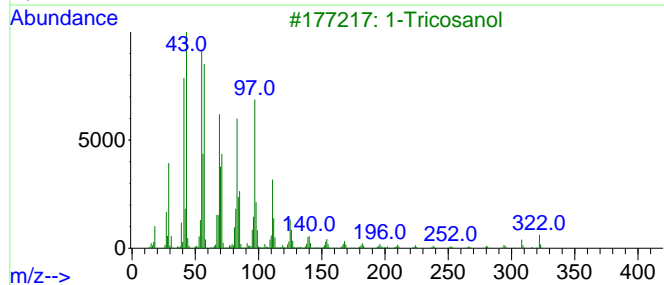
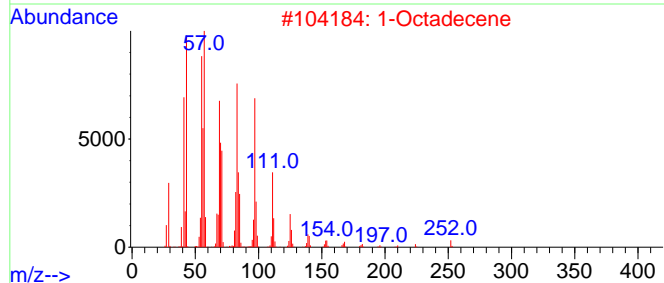
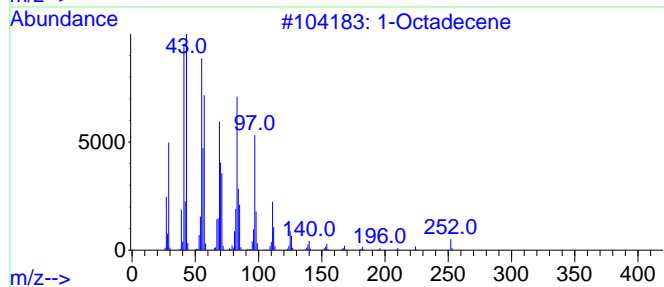
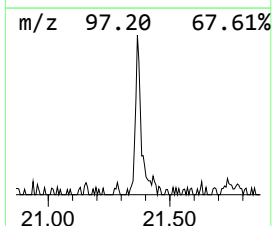
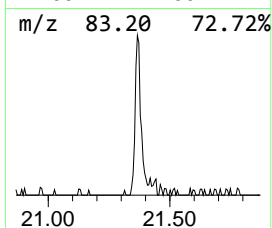
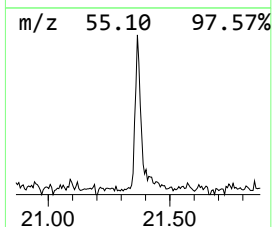
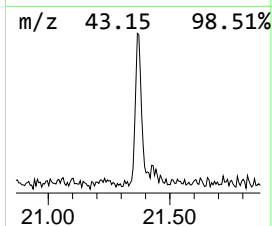
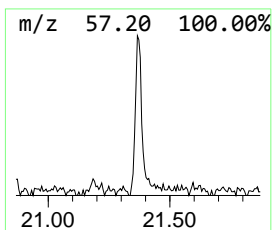
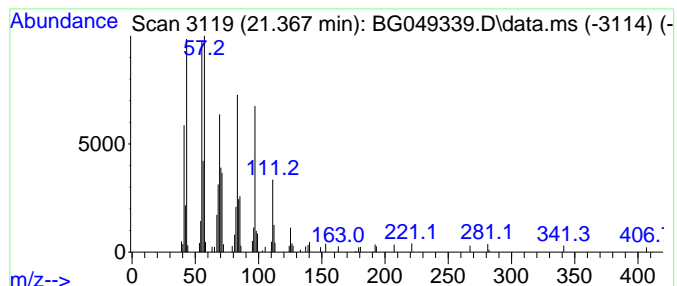
Quant Method : Z:\SVOASRV\HPCHEM1\BNA_G\METHODS\SFAM-EPA-BG070921.M
 Quant Title : SVOA CALIBRATION

TIC Library : C:\DATABASE\NIST11.L
 TIC Integration Parameters: LSCINT.P

 Peak Number 6 (DEL) Alkane: Straight-Chai... Concentration Rank 5

R.T.	EstConc	Area	Relative to ISTD	R.T.
21.370	4.35 ng/ul	117444	Chrysene-d12	21.743

Hit#	of 5	Tentative ID	MW	MolForm	CAS#	Qual
1		1-Octadecene	252	C18H36	000112-88-9	91
2		1-Octadecene	252	C18H36	000112-88-9	91
3		1-Tricosanol	340	C23H48O	003133-01-5	91
4		10-Heneicosene (c,t)	294	C21H42	095008-11-0	91
5		Pentafluoropropionic acid, tride...	346	C16H27F5O2	959261-22-4	91



Data Path : Z:\svoasrv\HPCHEM1\BNA_G\Data\BG071421\
 Data File : BG049339.D
 Acq On : 14 Jul 2021 21:34
 Operator : CG/JU
 Sample : M2971-09
 Misc :
 ALS Vial : 15 Sample Multiplier: 1

Instrument :
 BNA_G
 ClientSampleId :
 BGE91

Quant Method : Z:\SVOASRV\HPCHEM1\BNA_G\METHODS\SFAM-EPA-BG070921.M
 Quant Title : SVOA CALIBRATION

TIC Library : C:\DATABASE\NIST11.L
 TIC Integration Parameters: LSCINT.P

TIC Top Hit name	RT	EstConc	Units	Response	--Internal Standard--			
					#	RT	Resp	Conc
(DEL) Alkane: S...	3.110	13.1	ng/ul	134953	1	8.065	205589	20.0
Butane, 2-metho...	3.190	8.3	ng/ul	85782	1	8.065	205589	20.0
Ethylene glycol...	10.650	2.7	ng/ul	38369	2	10.885	282715	20.0
1,3-Benzenediol...	18.780	6.9	ng/ul	174489	4	17.459	502603	20.0
Hexanedioic aci...	20.820	68.5	ng/ul	1847780	5	21.743	539595	20.0
(DEL) Alkane: S...	21.370	4.3	ng/ul	117444	5	21.743	539595	20.0