

Data Path : Z:\HPCHEM1\BNA_G\DATA\BG071616\
 Data File : BG023144.D
 Acq On : 16 Jul 2016 12:59
 Operator : UM/SJ
 Sample : H4018-12
 Misc :
 ALS Vial : 8 Sample Multiplier: 1

Instrument :
 BNA_G
 ClientSampleId :
 F9-B4(0-12)C

Quant Time: Jul 18 14:24:05 2016
 Quant Method : Z:\HPCHEM1\BNA_G\METHODS\8270-BG070816.M
 Quant Title : ASP BNA STANDARDS FOR 5 POINT CALIBRATION
 QLast Update : Tue Jul 12 18:30:58 2016
 Response via : Initial Calibration

Internal Standards	R.T.	QIon	Response	Conc	Units	Dev(Min)
1) 1,4-Dichlorobenzene-d4	8.14	152	45740	20.00	ng	0.00
21) Naphthalene-d8	10.98	136	221439	20.00	ng	0.00
38) Acenaphthene-d10	14.79	164	158063	20.00	ng	0.00
63) Phenanthrene-d10	17.55	188	384044	20.00	ng	0.00
75) Chrysene-d12	21.85	240	416147	20.00	ng	0.00
86) Perylene-d12	25.23	264	420004	20.00	ng	0.04

System Monitoring Compounds

5) 2-Fluorophenol	5.69	112	664908	237.75	ng	0.00
7) Phenol-d6	7.30	99	1078640	246.25	ng	0.00
23) Nitrobenzene-d5	9.32	82	792592	153.26	ng	0.00
41) 2,4,6-Tribromophenol	16.29	330	527747	185.78	ng	0.00
44) 2-Fluorobiphenyl	13.41	172	1565381	155.99	ng	0.00
78) Terphenyl-d14	0.00	244	0d	0.00	ng	

Target Compounds

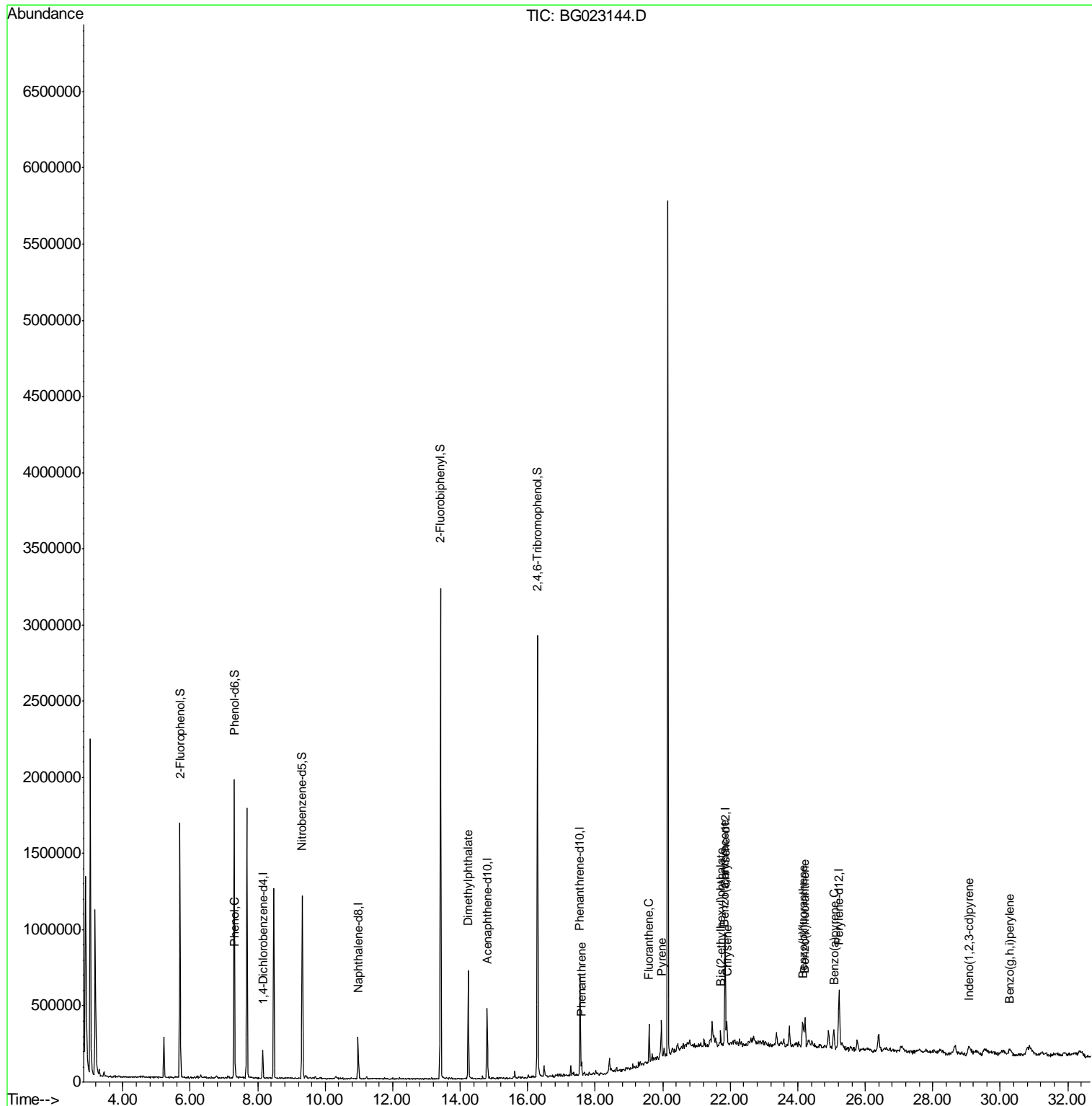
Target Compounds	R.T.	QIon	Response	Conc	Units	Qvalue
10) Phenol	7.33	94	15513	3.44	ng	# 41
49) Dimethylphthalate	14.24	163	436929	33.84	ng	99
70) Phenanthrene	17.59	178	49644	2.64	ng	# 94
74) Fluoranthene	19.60	202	154734	6.70	ng	95
77) Pyrene	19.96	202	152219	6.51	ng	95
80) Benzo(a)anthracene	21.83	228	128596m	5.52	ng	
82) Chrysene	21.90	228	127660	5.85	ng	96
83) Bis(2-ethylhexyl)phthalate	21.71	149	35605m	2.77	ng	
85) Indeno(1,2,3-cd)pyrene	29.07	276	100524	3.61	ng	# 100
87) Benzo(b)fluoranthene	24.15	252	226184	9.33	ng	# 95
88) Benzo(k)fluoranthene	24.22	252	64761m	2.82	ng	
89) Benzo(a)pyrene	25.06	252	148525	6.39	ng	# 98
91) Benzo(g,h,i)perylene	30.28	276	91569	3.97	ng	# 93

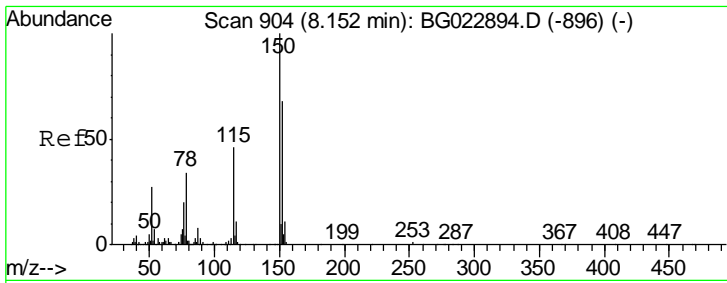
(#) = qualifier out of range (m) = manual integration (+) = signals summed

Data Path : Z:\HPCHEM1\BNA_G\DATA\BG071616\
 Data File : BG023144.D
 Acq On : 16 Jul 2016 12:59
 Operator : UM/SJ
 Sample : H4018-12
 Misc :
 ALS Vial : 8 Sample Multiplier: 1

Instrument :
 BNA_G
 ClientSampleId :
 F9-B4(0-12)C

Quant Time: Jul 18 14:24:05 2016
 Quant Method : Z:\HPCHEM1\BNA_G\METHODS\8270-BG070816.M
 Quant Title : ASP BNA STANDARDS FOR 5 POINT CALIBRATION
 QLast Update : Tue Jul 12 18:30:58 2016
 Response via : Initial Calibration

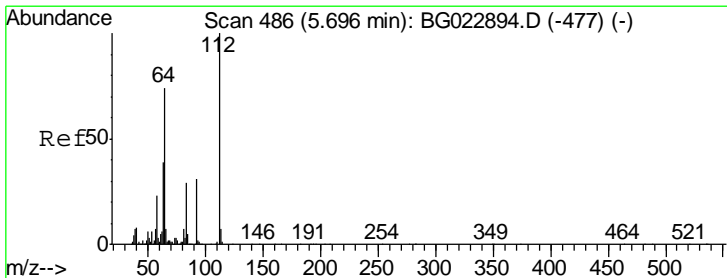
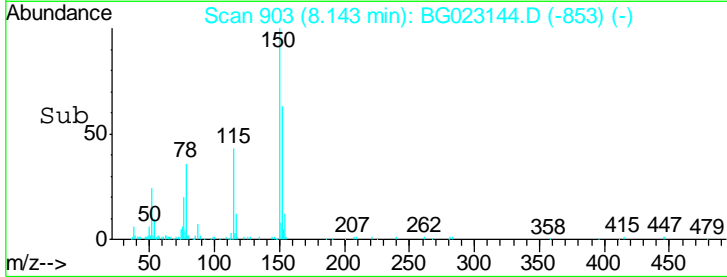
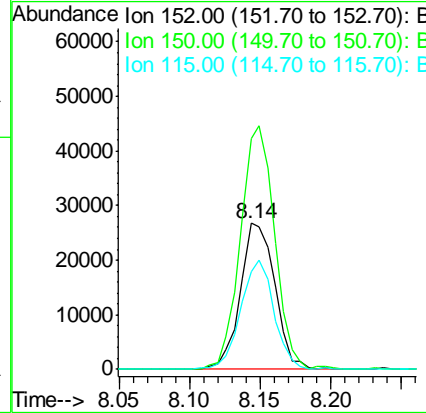
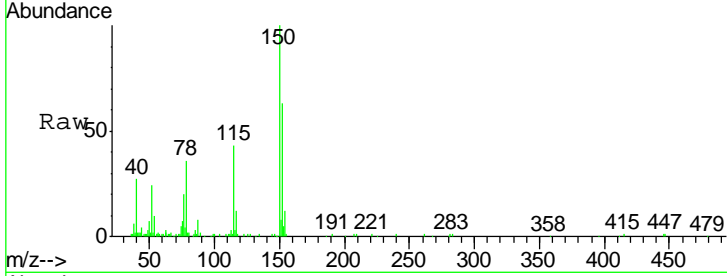




#1
 1,4-Dichlorobenzene-d4
 Concen: 20.00 ng
 RT: 8.14 min Scan# 903
 Delta R.T. -0.01 min
 Lab File: BG023144.D
 Acq: 16 Jul 2016 12:59

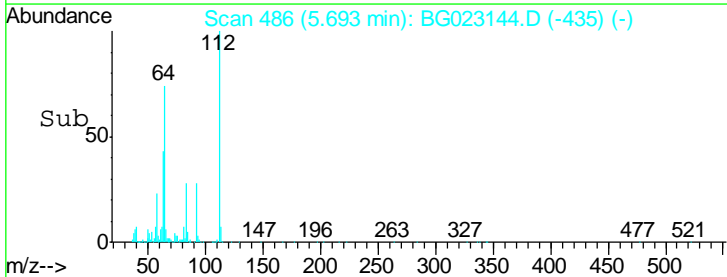
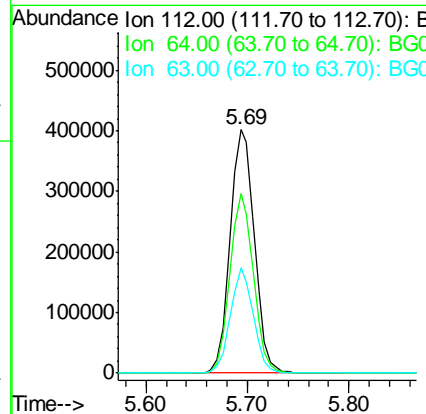
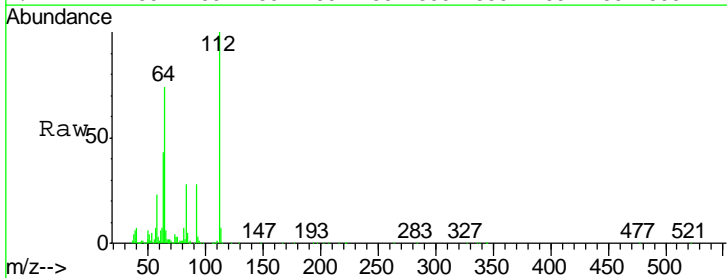
Instrument :
 BNA_G
 ClientSampleId :
 F9-B4(0-12)C

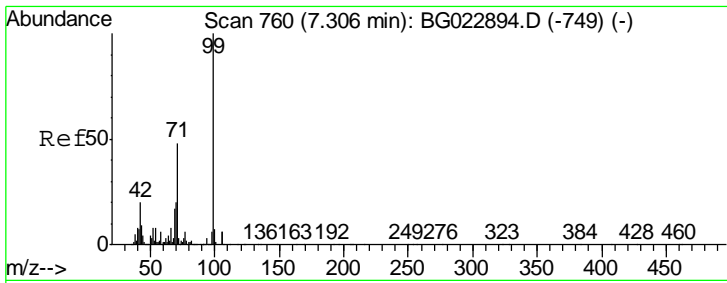
Tgt Ion	Resp	Lower	Upper
152	45740		
152	100		
150	158.1	144.7	217.1
115	67.4	64.0	96.0



#5
 2-Fluorophenol
 Concen: 237.75 ng
 RT: 5.69 min Scan# 486
 Delta R.T. -0.00 min
 Lab File: BG023144.D
 Acq: 16 Jul 2016 12:59

Tgt Ion	Resp	Lower	Upper
112	664908		
112	100		
64	73.8	59.0	88.4
63	43.4	37.8	56.8

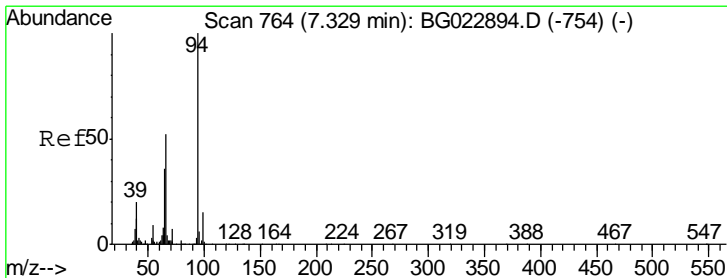
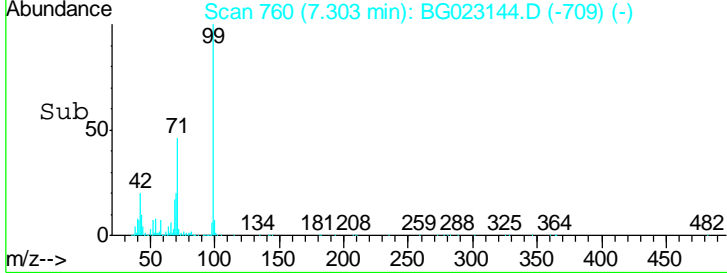
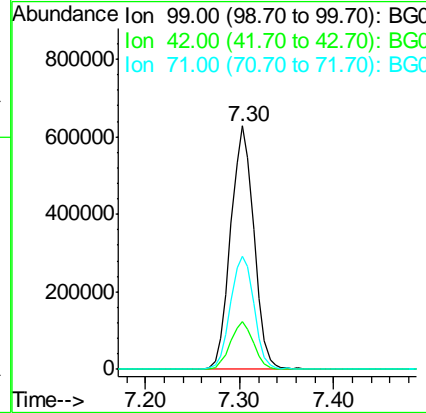
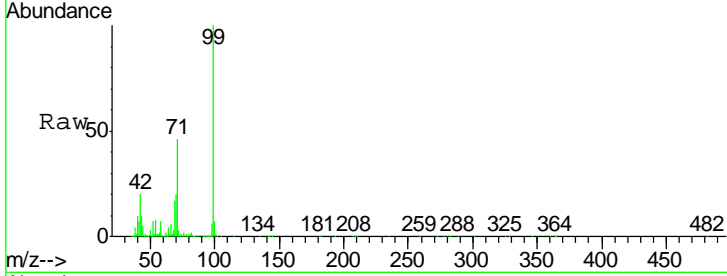




#7
 Phenol-d6
 Concen: 246.25 ng
 RT: 7.30 min Scan# 760
 Delta R.T. -0.00 min
 Lab File: BG023144.D
 Acq: 16 Jul 2016 12:59

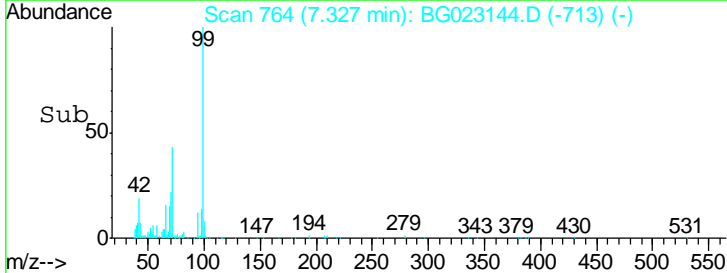
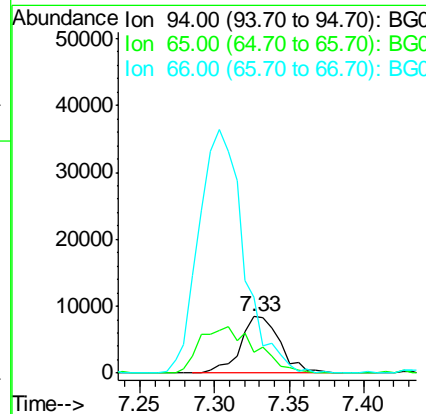
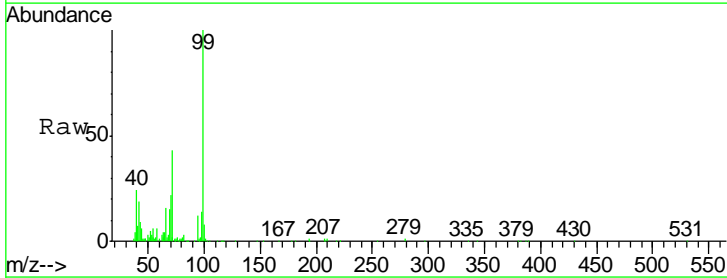
Instrument :
 BNA_G
 ClientSampled :
 F9-B4(0-12)C

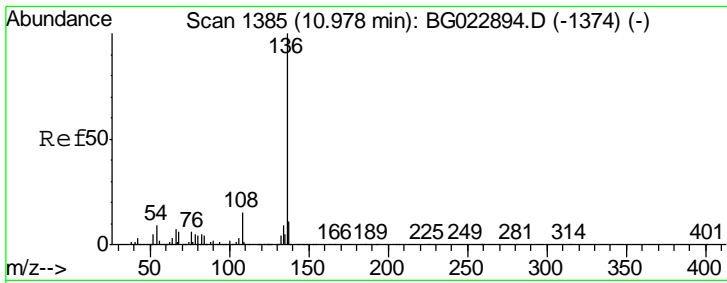
Tgt Ion	Resp	Lower	Upper
99	1078640		
42	19.5	17.8	26.6
71	46.3	41.5	62.3



#10
 Phenol
 Concen: 3.44 ng
 RT: 7.33 min Scan# 764
 Delta R.T. -0.00 min
 Lab File: BG023144.D
 Acq: 16 Jul 2016 12:59

Tgt Ion	Resp	Lower	Upper
94	15513		
65	37.3	18.1	58.1
66	134.9	42.1	82.1#

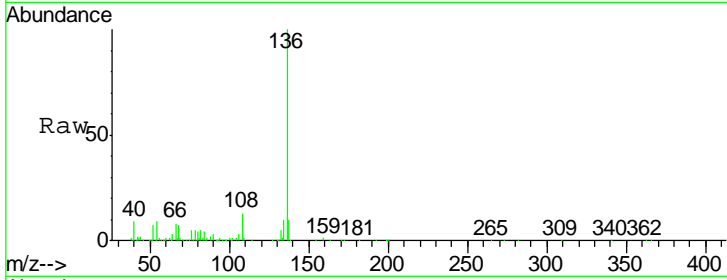




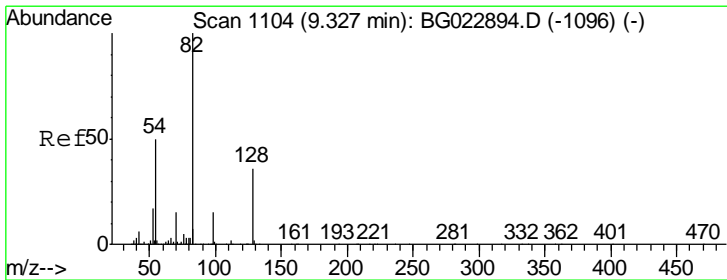
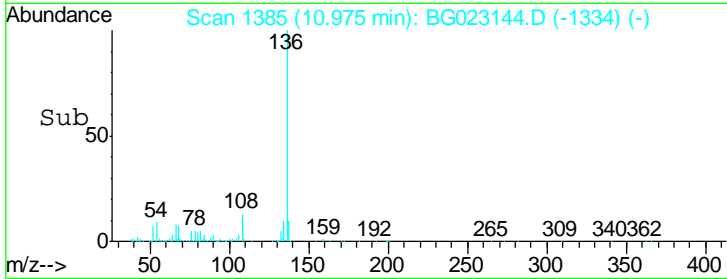
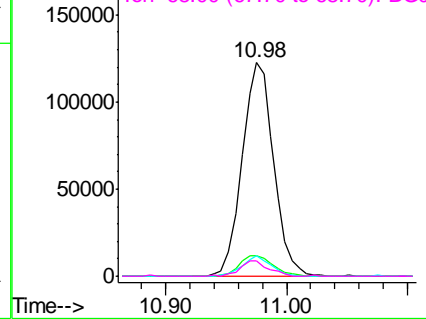
#21
 Naphthalene-d8
 Concen: 20.00 ng
 RT: 10.98 min Scan# 1385
 Delta R.T. -0.00 min
 Lab File: BG023144.D
 Acq: 16 Jul 2016 12:59

Instrument :
 BNA_G
 ClientSampled :
 F9-B4(0-12)C

Tgt Ion	Resp	Lower	Upper
136	100		
137	9.5	9.6	14.4#
54	9.5	7.3	10.9
68	7.1	5.3	7.9

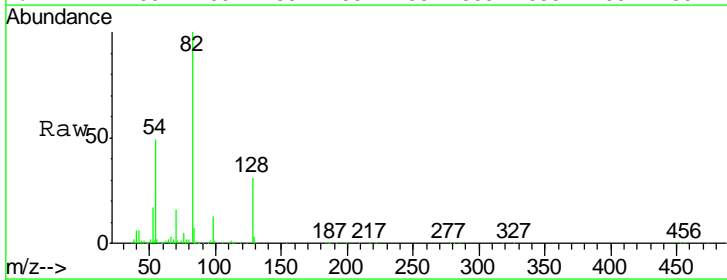


Abundance Ion 136.00 (135.70 to 136.70): E
 Ion 137.00 (136.70 to 137.70): E
 Ion 54.00 (53.70 to 54.70): BGC
 Ion 68.00 (67.70 to 68.70): BGC

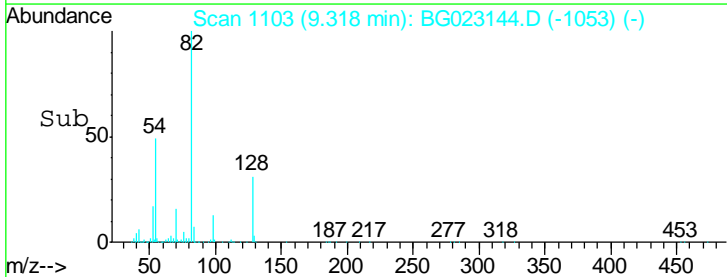
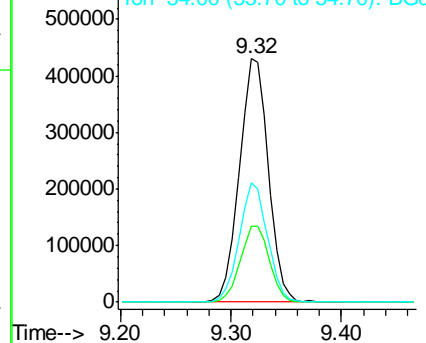


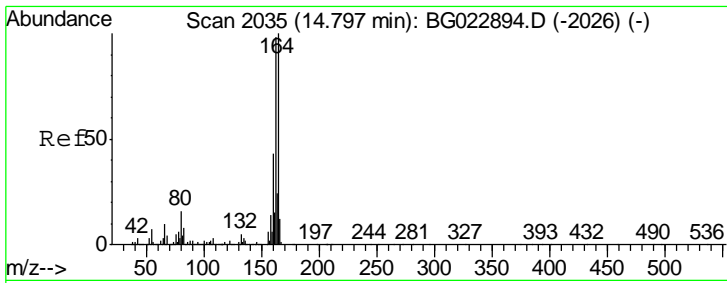
#23
 Nitrobenzene-d5
 Concen: 153.26 ng
 RT: 9.32 min Scan# 1103
 Delta R.T. -0.01 min
 Lab File: BG023144.D
 Acq: 16 Jul 2016 12:59

Tgt Ion	Resp	Lower	Upper
82	100		
128	31.3	24.4	36.6
54	49.1	41.4	62.0



Abundance Ion 82.00 (81.70 to 82.70): BGC
 Ion 128.00 (127.70 to 128.70): E
 Ion 54.00 (53.70 to 54.70): BGC

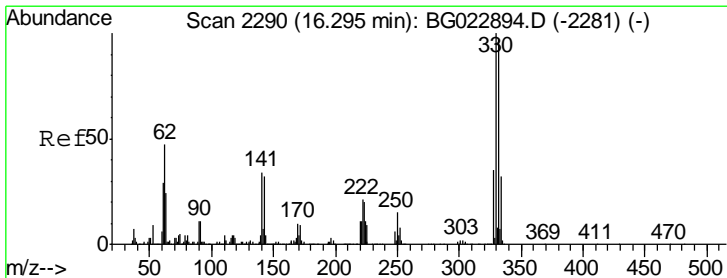
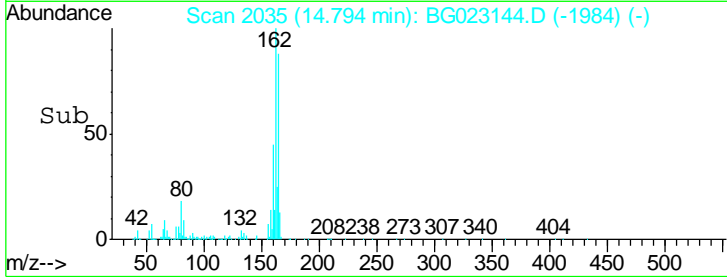
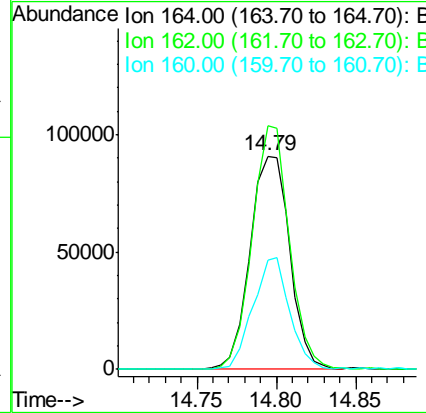
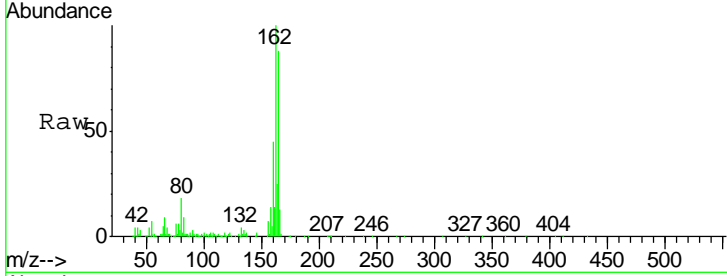




#38
 Acenaphthene-d10
 Concen: 20.00 ng
 RT: 14.79 min Scan# 2035
 Delta R.T. -0.00 min
 Lab File: BG023144.D
 Acq: 16 Jul 2016 12:59

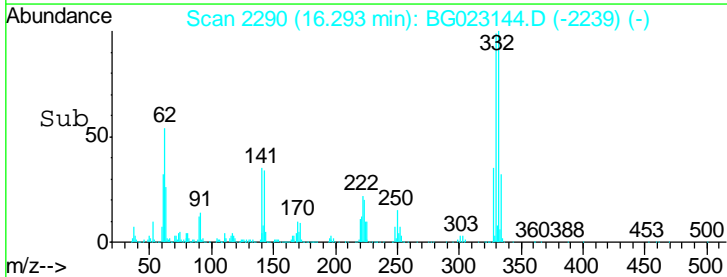
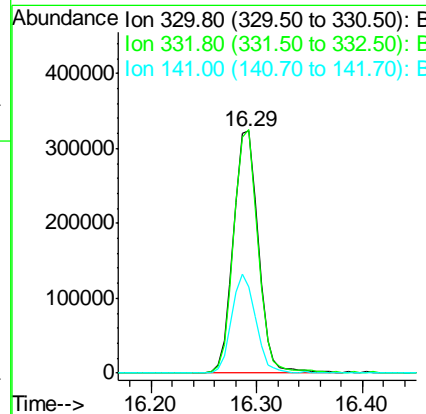
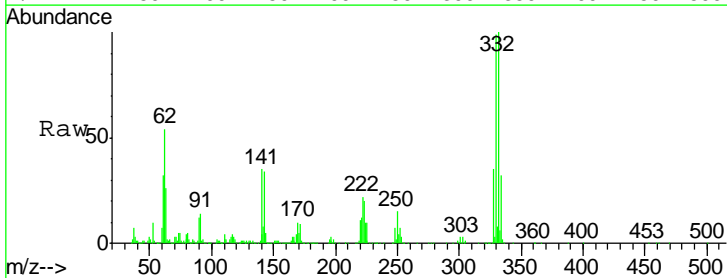
Instrument :
 BNA_G
 ClientSampled :
 F9-B4(0-12)C

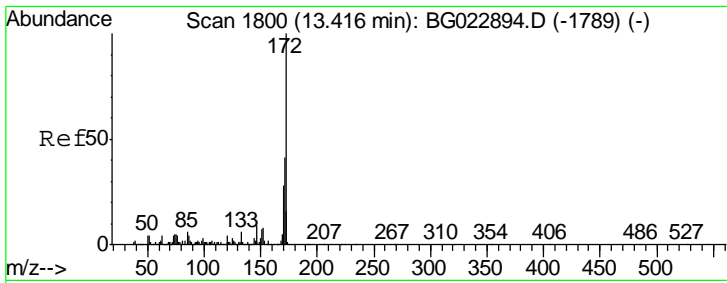
Tgt Ion	Resp	Lower	Upper
164	158063		
162	114.2	87.7	131.5
160	51.2	37.2	55.8



#41
 2,4,6-Tribromophenol
 Concen: 185.78 ng
 RT: 16.29 min Scan# 2290
 Delta R.T. -0.00 min
 Lab File: BG023144.D
 Acq: 16 Jul 2016 12:59

Tgt Ion	Resp	Lower	Upper
330	527747		
332	97.7	77.4	116.2
141	39.0	31.7	47.5



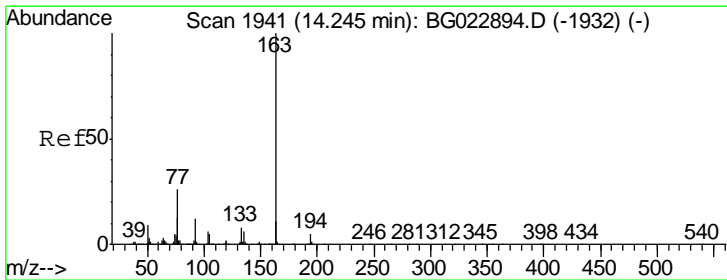
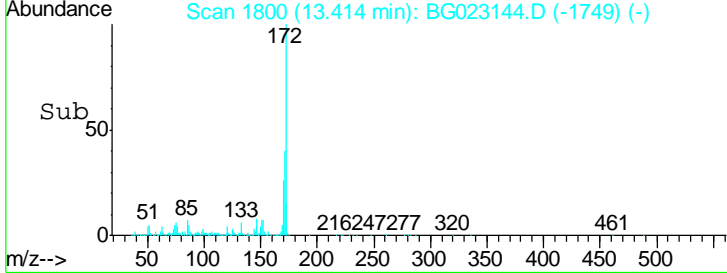
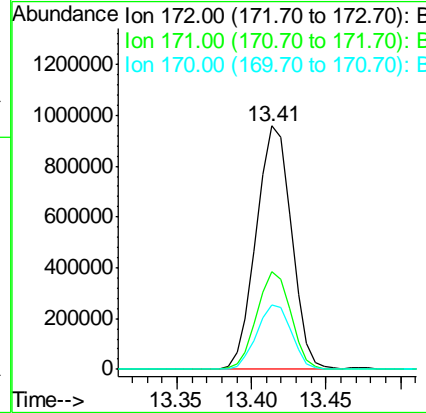
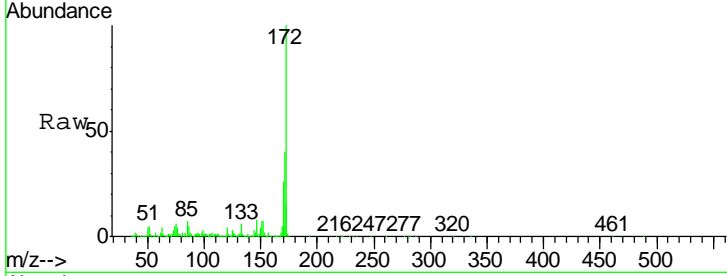


#44
 2-Fluorobiphenyl
 Concen: 155.99 ng
 RT: 13.41 min Scan# 1800
 Delta R.T. -0.00 min
 Lab File: BG023144.D
 Acq: 16 Jul 2016 12:59

Instrument :
 BNA_G
 ClientSampled :
 F9-B4(0-12)C

Tgt Ion:172 Resp: 1565381

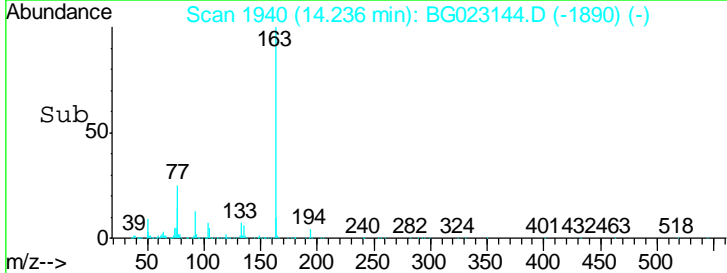
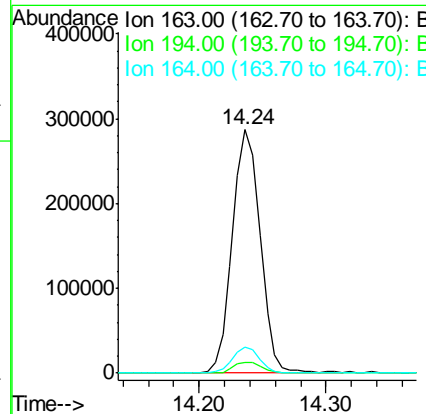
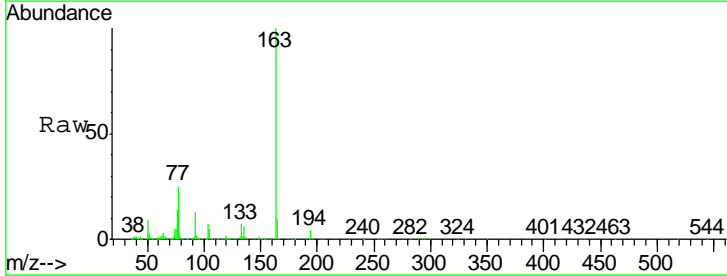
Ion	Ratio	Lower	Upper
172	100		
171	40.2	31.6	47.4
170	26.3	21.3	31.9

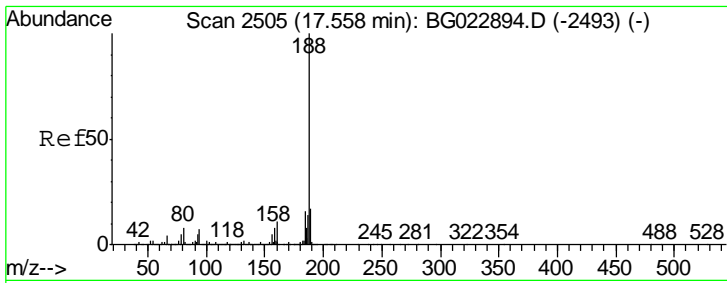


#49
 Dimethylphthalate
 Concen: 33.84 ng
 RT: 14.24 min Scan# 1940
 Delta R.T. -0.01 min
 Lab File: BG023144.D
 Acq: 16 Jul 2016 12:59

Tgt Ion:163 Resp: 436929

Ion	Ratio	Lower	Upper
163	100		
194	4.4	3.6	5.4
164	10.4	8.1	12.1

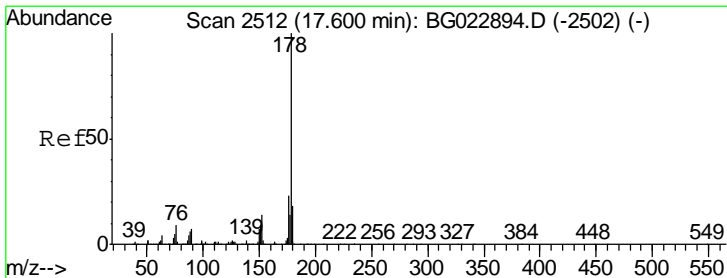
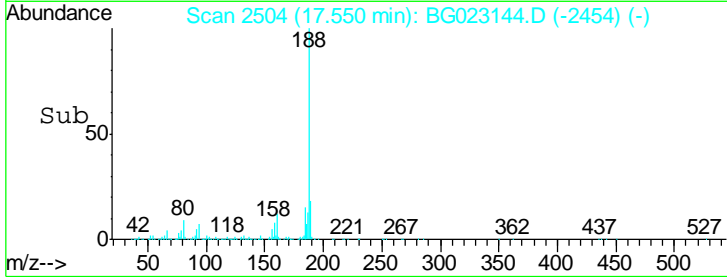
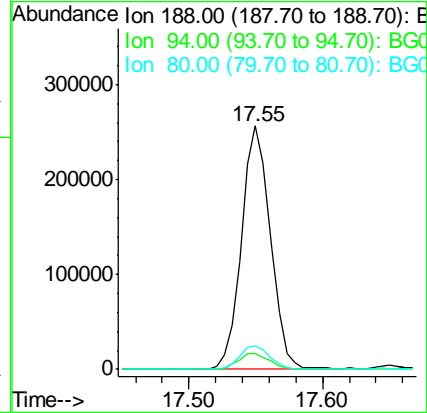
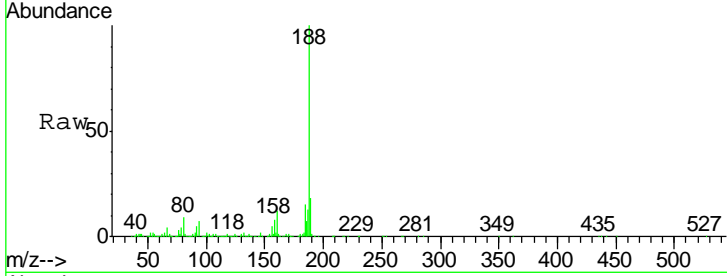




#63
 Phenanthrene-d10
 Concen: 20.00 ng
 RT: 17.55 min Scan# 2504
 Delta R.T. -0.01 min
 Lab File: BG023144.D
 Acq: 16 Jul 2016 12:59

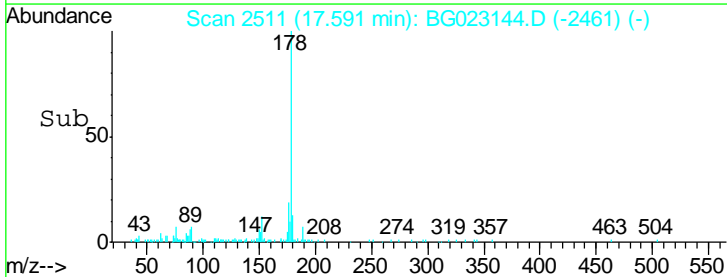
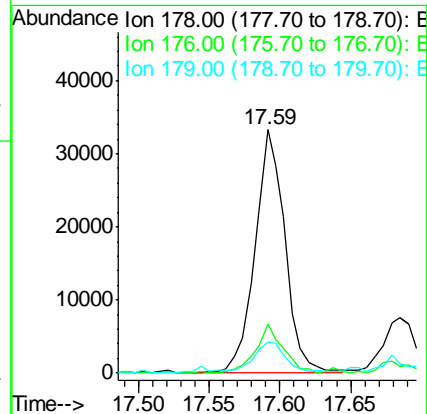
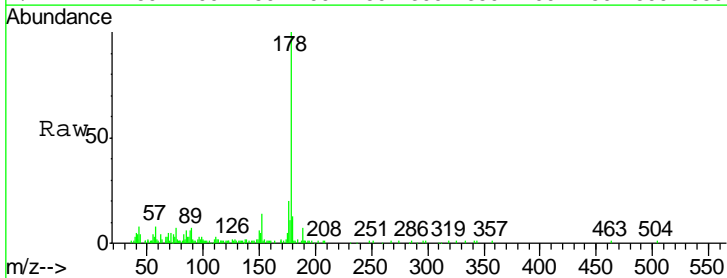
Instrument :
 BNA_G
 ClientSampleId :
 F9-B4(0-12)C

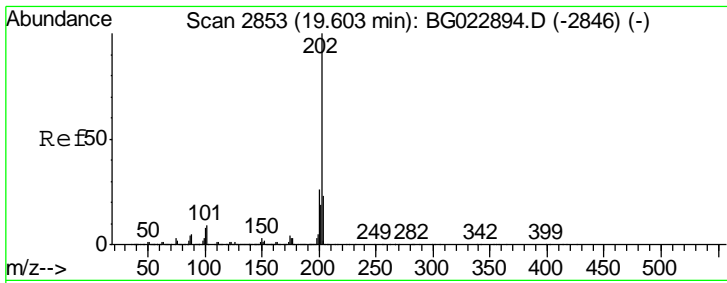
Tgt Ion	Resp	Lower	Upper
188	100		
94	6.6	5.2	7.8
80	9.4	7.2	10.8



#70
 Phenanthrene
 Concen: 2.64 ng
 RT: 17.59 min Scan# 2511
 Delta R.T. -0.01 min
 Lab File: BG023144.D
 Acq: 16 Jul 2016 12:59

Tgt Ion	Resp	Lower	Upper
178	100		
176	20.1	16.8	25.2
179	12.8	14.3	21.5#

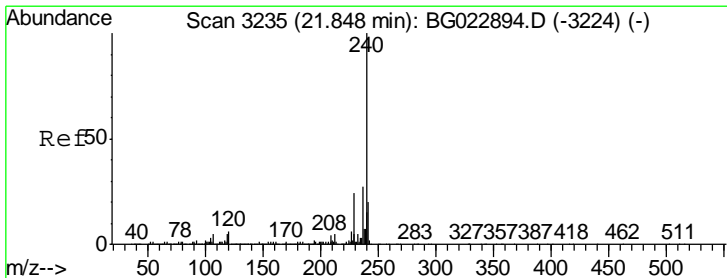
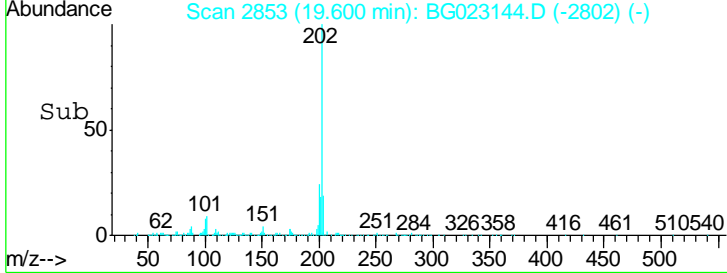
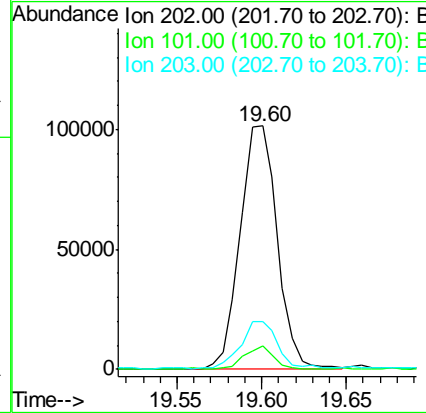
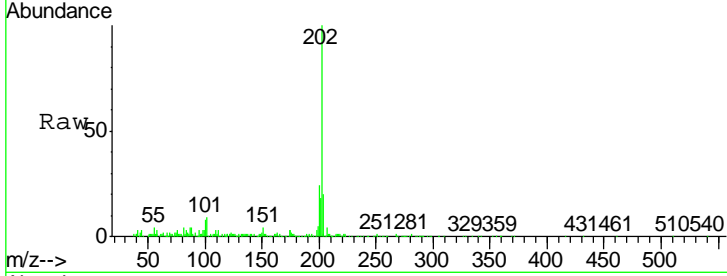




#74
 Fluoranthene
 Concen: 6.70 ng
 RT: 19.60 min Scan# 2853
 Delta R.T. -0.00 min
 Lab File: BG023144.D
 Acq: 16 Jul 2016 12:59

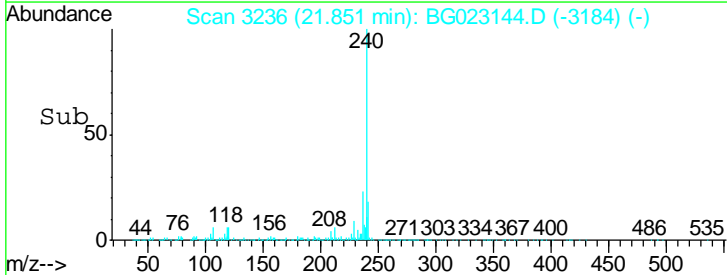
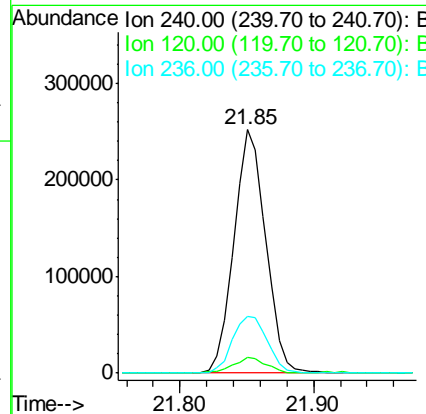
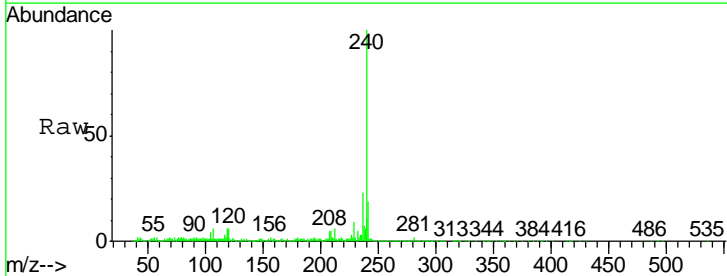
Instrument :
 BNA_G
 ClientSampled :
 F9-B4(0-12)C

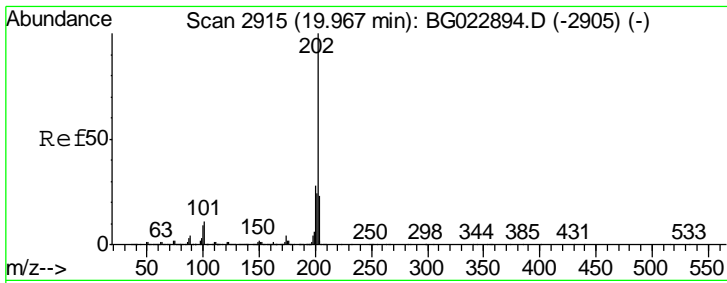
Tgt Ion	Resp	Lower	Upper
202	154734		
101	9.4	0.0	27.4
203	19.5	1.7	41.7



#75
 Chrysene-d12
 Concen: 20.00 ng
 RT: 21.85 min Scan# 3236
 Delta R.T. 0.00 min
 Lab File: BG023144.D
 Acq: 16 Jul 2016 12:59

Tgt Ion	Resp	Lower	Upper
240	416147		
120	6.3	4.1	6.1#
236	23.3	21.1	31.7

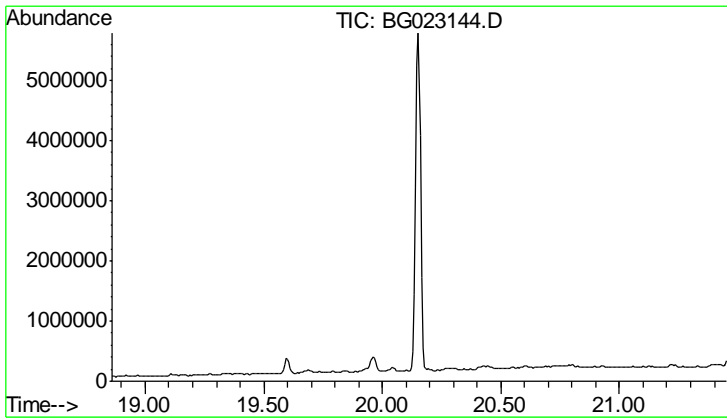
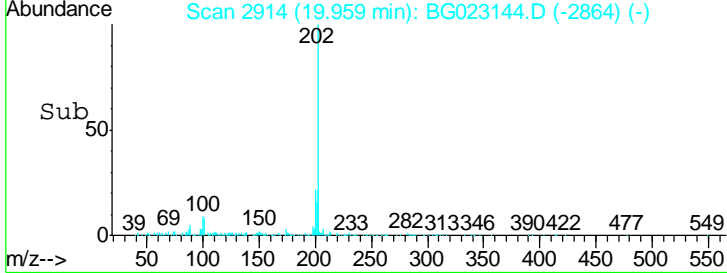
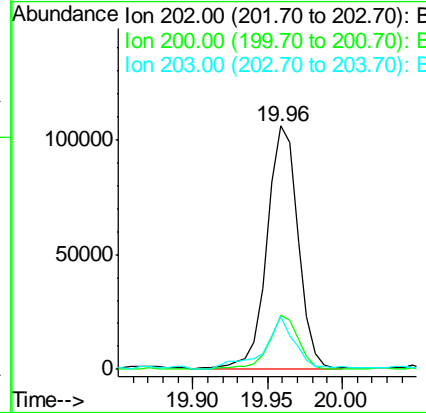
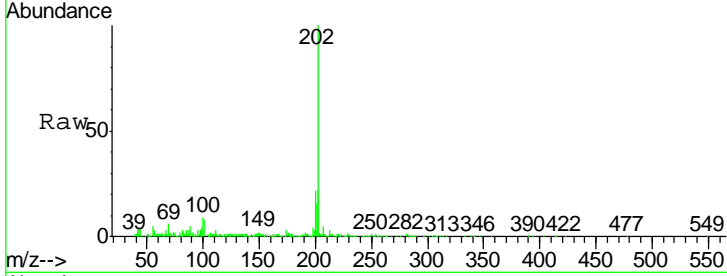




#77
 Pyrene
 Concen: 6.51 ng
 RT: 19.96 min Scan# 2914
 Delta R.T. -0.01 min
 Lab File: BG023144.D
 Acq: 16 Jul 2016 12:59

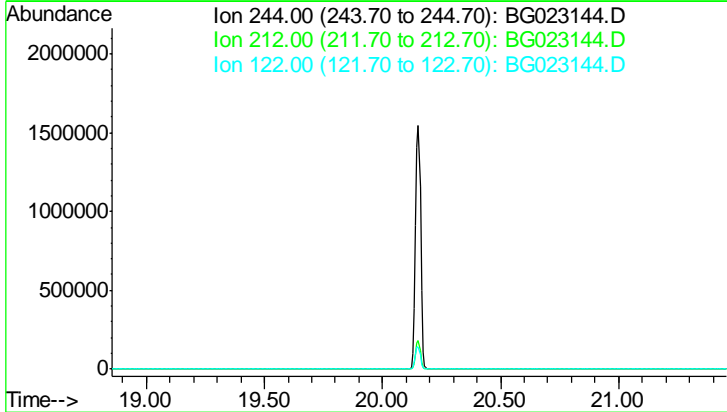
Instrument :
 BNA_G
 ClientSampled :
 F9-B4(0-12)C

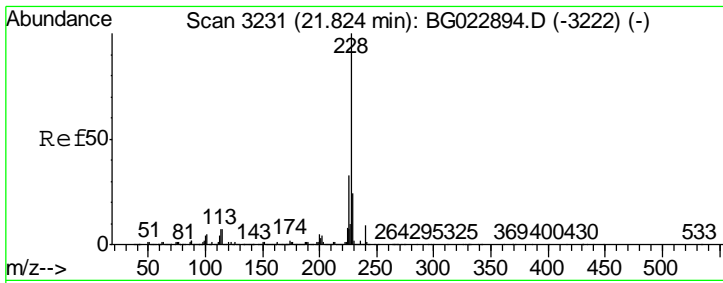
Tgt Ion	Resp	Lower	Upper
202	152219		
200	22.4	21.2	31.8
203	21.9	16.8	25.2



#78
 Terphenyl-d14
 Concen: 0.00 ng
 Expected RT: 20.16 min
 Lab File: BG023144.D
 Acq: 16 Jul 2016 12:59

Tgt Ion	Exp Ratio
244	100
212	13.5
122	10.0

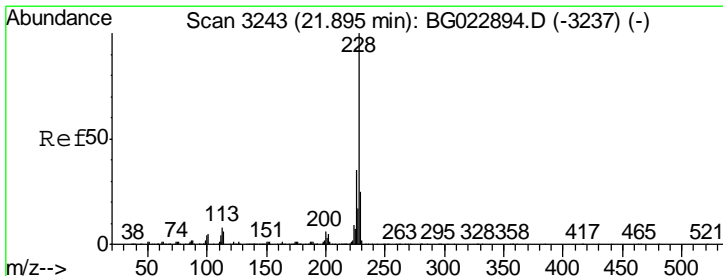
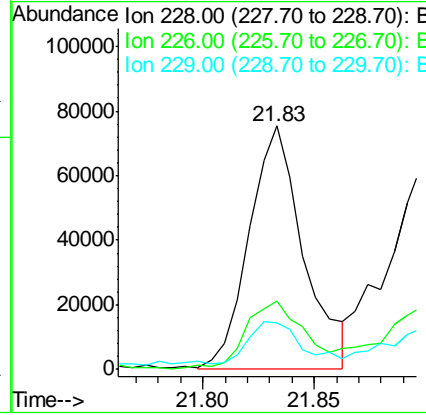
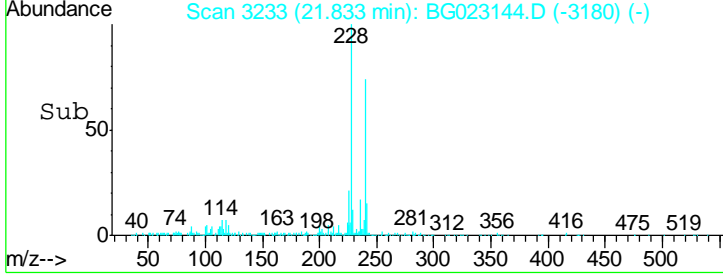
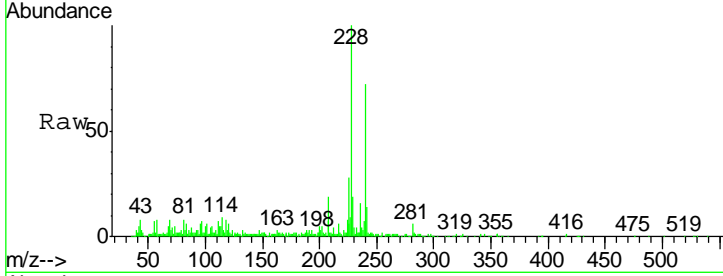




#80
 Benzo(a)anthracene
 Concen: 5.52 ng m
 RT: 21.83 min Scan# 3233
 Delta R.T. 0.01 min
 Lab File: BG023144.D
 Acq: 16 Jul 2016 12:59

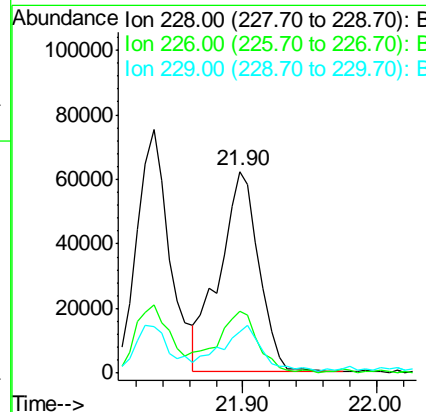
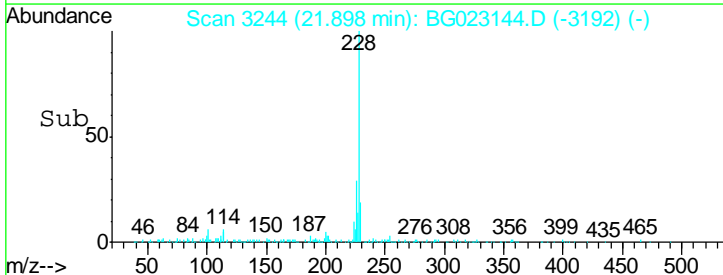
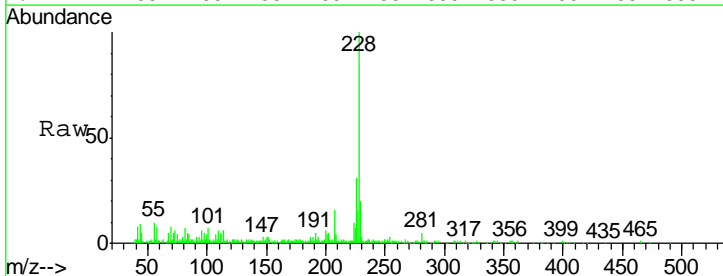
Instrument :
 BNA_G
 ClientSampled :
 F9-B4(0-12)C

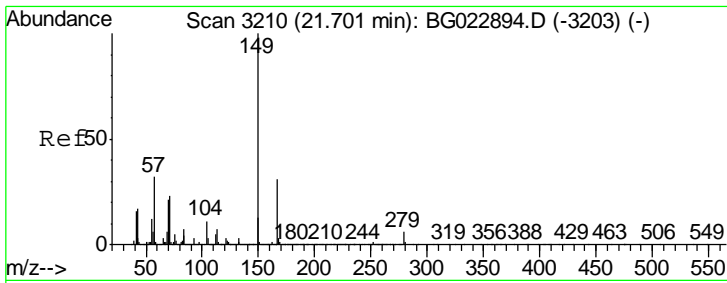
Tgt Ion	Resp	Lower	Upper
228	128596		
226	28.1	25.3	37.9
229	18.9	19.9	29.9



#82
 Chrysene
 Concen: 5.85 ng
 RT: 21.90 min Scan# 3244
 Delta R.T. 0.00 min
 Lab File: BG023144.D
 Acq: 16 Jul 2016 12:59

Tgt Ion	Resp	Lower	Upper
228	127660		
226	30.6	26.7	40.1
229	20.2	17.4	26.2

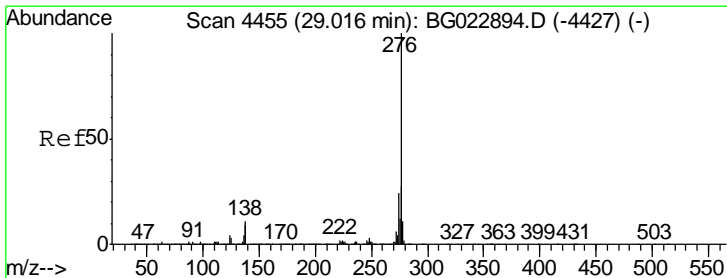
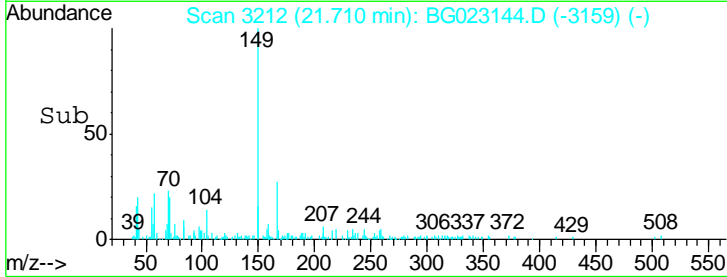
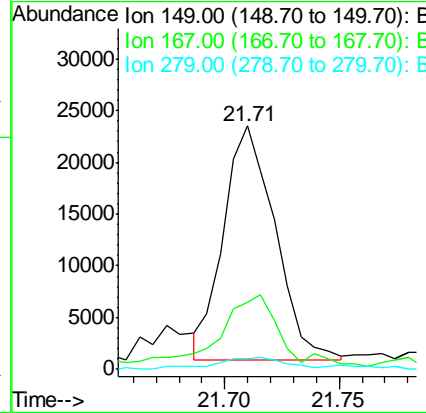
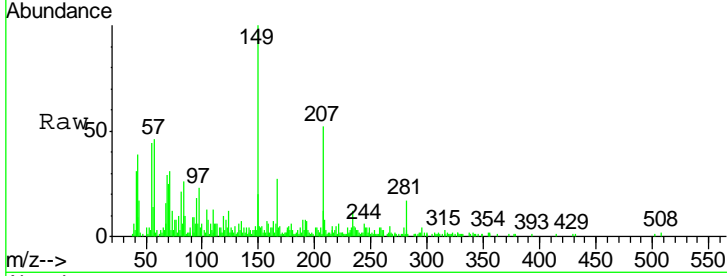




#83
 Bis(2-ethylhexyl)phthalate
 Concen: 2.77 ng m
 RT: 21.71 min Scan# 3212
 Delta R.T. 0.01 min
 Lab File: BG023144.D
 Acq: 16 Jul 2016 12:59

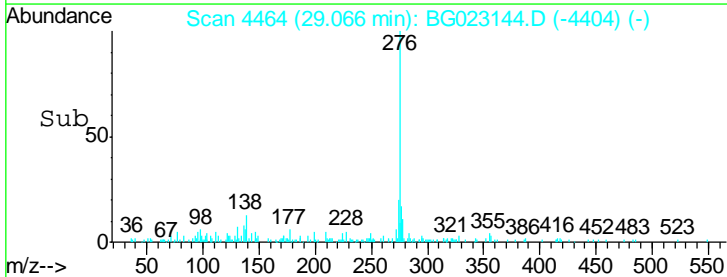
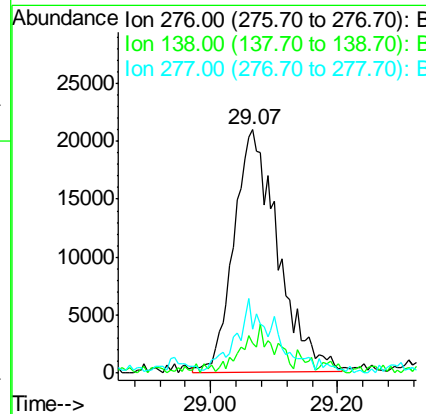
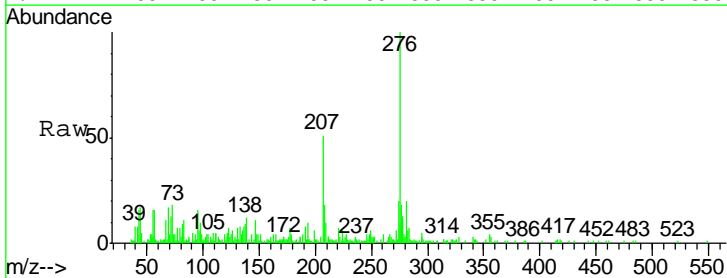
Instrument :
 BNA_G
 ClientSampleId :
 F9-B4(0-12)C

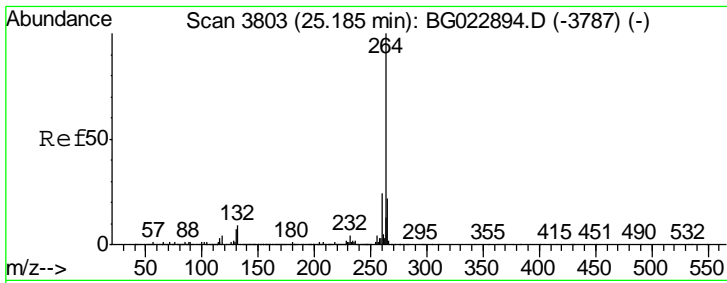
Tgt Ion	Resp	Lower	Upper
149	100		
167	27.3	24.0	36.0
279	4.4	4.8	7.2#



#85
 Indeno(1,2,3-cd)pyrene
 Concen: 3.61 ng
 RT: 29.07 min Scan# 4464
 Delta R.T. 0.05 min
 Lab File: BG023144.D
 Acq: 16 Jul 2016 12:59

Tgt Ion	Resp	Lower	Upper
276	100		
138	10.3	0.0	0.0#
277	15.9	0.0	0.0#

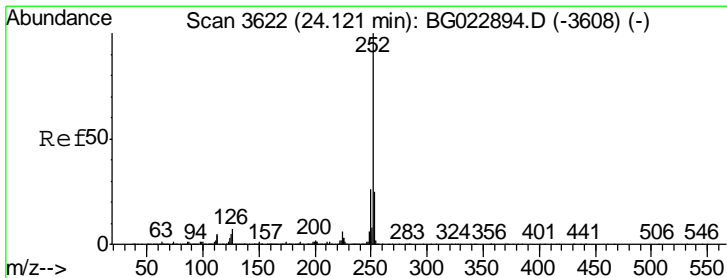
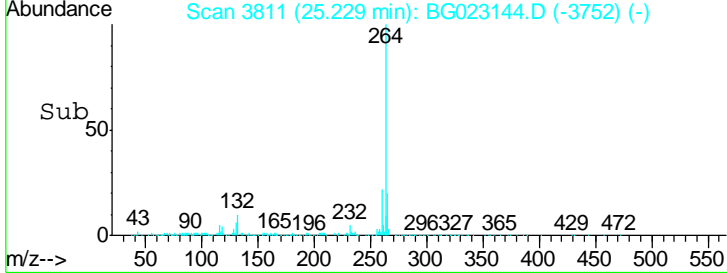
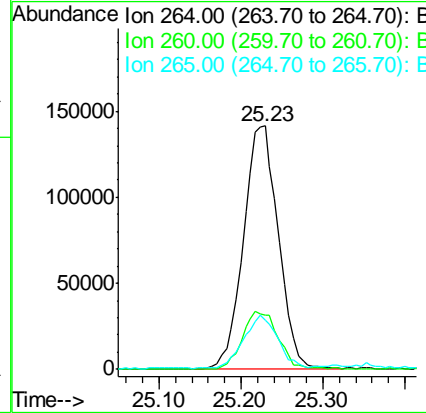
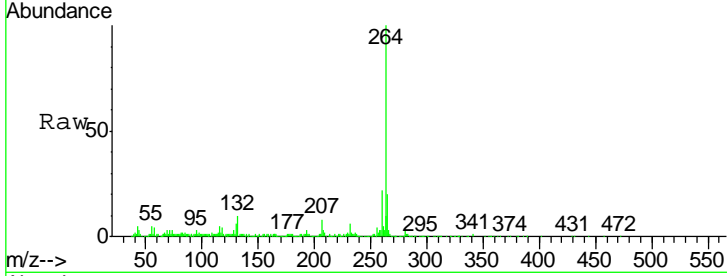




#86
 Perylene-d12
 Concen: 20.00 ng
 RT: 25.23 min Scan# 3811
 Delta R.T. 0.04 min
 Lab File: BG023144.D
 Acq: 16 Jul 2016 12:59

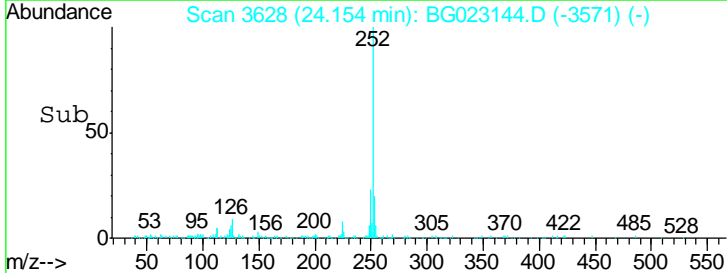
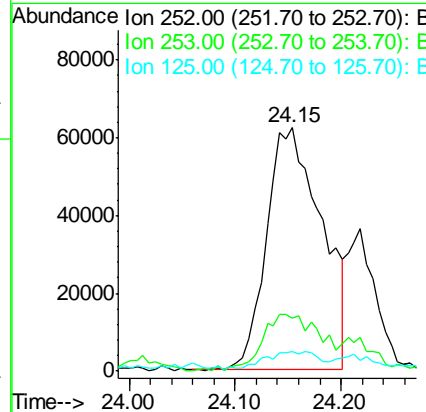
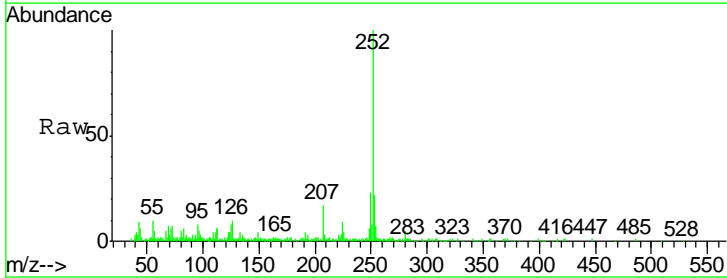
Instrument :
 BNA_G
 ClientSampled :
 F9-B4(0-12)C

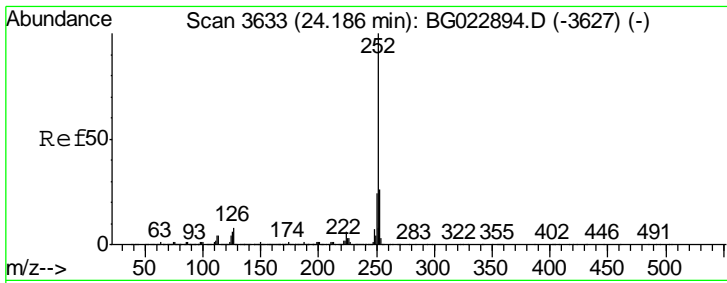
Tgt Ion	Resp	Lower	Upper
264	100		
260	22.2	18.4	27.6
265	20.3	18.9	28.3



#87
 Benzo(b)fluoranthene
 Concen: 9.33 ng
 RT: 24.15 min Scan# 3628
 Delta R.T. 0.03 min
 Lab File: BG023144.D
 Acq: 16 Jul 2016 12:59

Tgt Ion	Resp	Lower	Upper
252	100		
253	21.9	18.9	28.3
125	8.2	3.9	5.9#

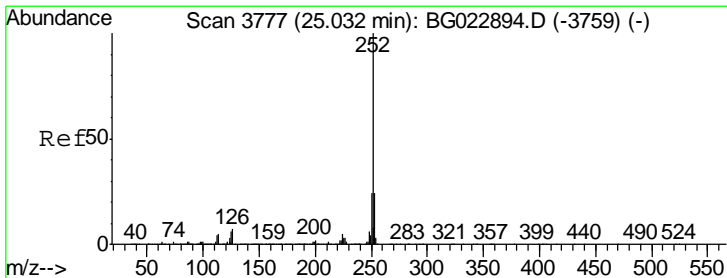
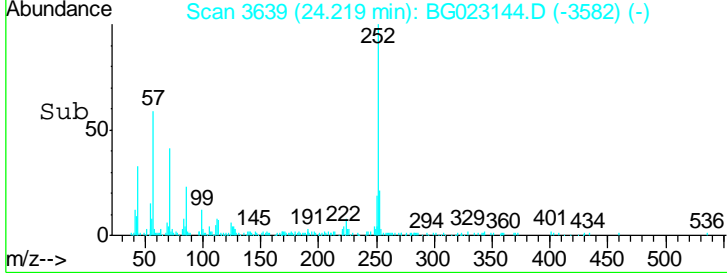
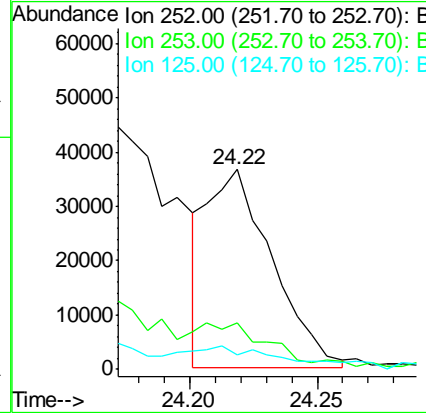
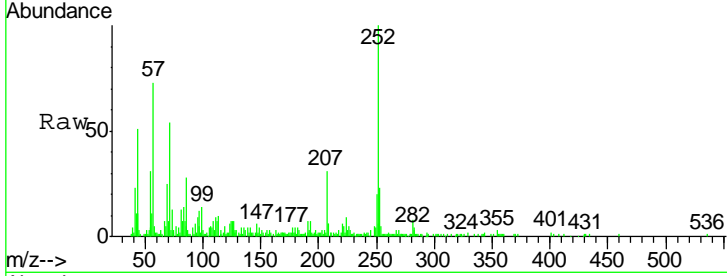




#88
 Benzo(k)fluoranthene
 Concen: 2.82 ng m
 RT: 24.22 min Scan# 3639
 Delta R.T. 0.03 min
 Lab File: BG023144.D
 Acq: 16 Jul 2016 12:59

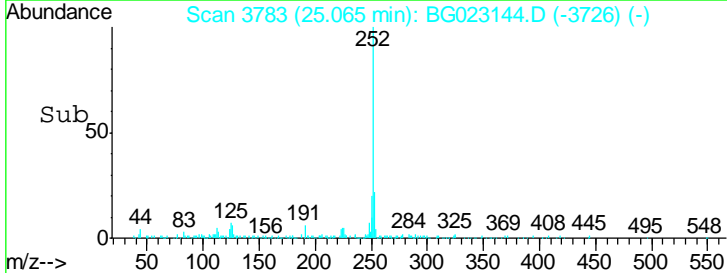
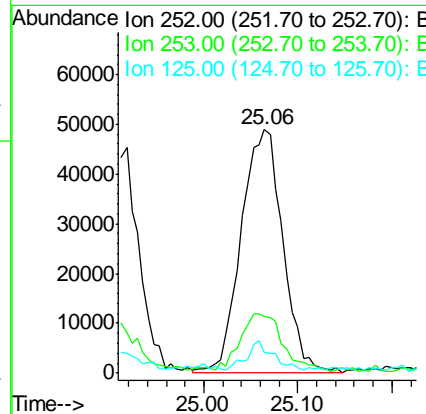
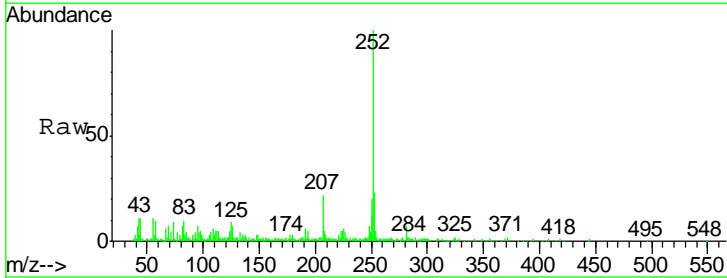
Instrument :
 BNA_G
 ClientSampleId :
 F9-B4(0-12)C

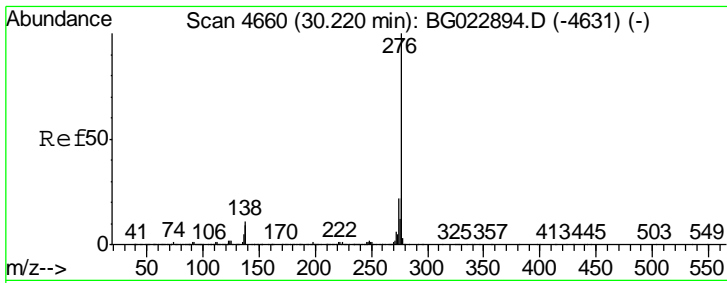
Tgt Ion	Resp	Lower	Upper
252	100		
253	23.3	18.8	28.2
125	7.1	3.2	4.8#



#89
 Benzo(a)pyrene
 Concen: 6.39 ng
 RT: 25.06 min Scan# 3783
 Delta R.T. 0.03 min
 Lab File: BG023144.D
 Acq: 16 Jul 2016 12:59

Tgt Ion	Resp	Lower	Upper
252	100		
253	23.1	18.7	28.1
125	8.8	3.9	5.9#





#91
 Benzo(g,h,i)perylene
 Concen: 3.97 ng
 RT: 30.28 min Scan# 4671
 Delta R.T. 0.06 min
 Lab File: BG023144.D
 Acq: 16 Jul 2016 12:59

Instrument :
 BNA_G
 ClientSampleId :
 F9-B4(0-12)C

Tgt Ion	Resp	Lower	Upper
276	100		
277	26.4	18.6	27.8
138	11.1	6.8	10.2

