

Data Path : Z:\svoasrv\HPCHEM1\BNA_G\Data\BG071724\
 Data File : BG062107.D
 Acq On : 17 Jul 2024 10:57
 Operator : MA/JU
 Sample : PB162043BL
 Misc :
 ALS Vial : 3 Sample Multiplier: 1

Instrument :
 BNA_G
 ClientSampleId :
 SBLK043

Integration Parameters: LSCINT.P

Integrator: RTE
 Smoothing : OFF
 Sampling : 1
 Start Thrs: 0.2
 Stop Thrs : 0

Filtering: 5
 Min Area: 0.1 % of largest Peak
 Max Peaks: 100
 Peak Location: TOP

If leading or trailing edge < 100 prefer < Baseline drop else tangent >
 Peak separation: 5

Method : Z:\svoasrv\HPCHEM1\BNA_G\Methods\SFAM-EPA-BG070224.MA.M
 Title : SVOA CALIBRATION

Signal : TIC: BG062107.D\data.ms

| peak # | R.T. min | first scan | max scan | last scan | PK TY | peak height | corr. area | corr. % max. | % of total |
|--------|----------|------------|----------|-----------|-------|-------------|------------|--------------|------------|
| 1 | 3.384 | 15 | 16 | 21 | rVB3 | 5639 | 4451 | 0.38% | 0.035% |
| 2 | 3.437 | 21 | 25 | 33 | rVB2 | 12050 | 19839 | 1.68% | 0.154% |
| 3 | 3.549 | 42 | 44 | 47 | rVB2 | 2745 | 2577 | 0.22% | 0.020% |
| 4 | 3.854 | 92 | 96 | 108 | rBV | 115885 | 191159 | 16.23% | 1.484% |
| 5 | 3.960 | 113 | 114 | 117 | rBV2 | 2637 | 2067 | 0.18% | 0.016% |
| 6 | 4.054 | 129 | 130 | 133 | rBV2 | 2694 | 2260 | 0.19% | 0.018% |
| 7 | 4.195 | 152 | 154 | 156 | rBV2 | 3443 | 2628 | 0.22% | 0.020% |
| 8 | 4.342 | 175 | 179 | 181 | rVB2 | 2469 | 3437 | 0.29% | 0.027% |
| 9 | 4.401 | 188 | 189 | 192 | rVB | 3680 | 2096 | 0.18% | 0.016% |
| 10 | 4.606 | 222 | 224 | 226 | rBV | 2210 | 2077 | 0.18% | 0.016% |
| 11 | 4.853 | 264 | 266 | 269 | rVV | 3427 | 3074 | 0.26% | 0.024% |
| 12 | 4.900 | 272 | 274 | 276 | rVV | 1970 | 2304 | 0.20% | 0.018% |
| 13 | 4.959 | 280 | 284 | 286 | rBV | 2266 | 3433 | 0.29% | 0.027% |
| 14 | 5.188 | 322 | 323 | 327 | rBV | 2958 | 4137 | 0.35% | 0.032% |
| 15 | 5.311 | 343 | 344 | 347 | rBV2 | 3231 | 2419 | 0.21% | 0.019% |
| 16 | 5.441 | 362 | 366 | 370 | rBV | 2880 | 5005 | 0.42% | 0.039% |
| 17 | 5.505 | 375 | 377 | 379 | rVB2 | 2919 | 2362 | 0.20% | 0.018% |
| 18 | 5.546 | 382 | 384 | 386 | rVB | 3714 | 2398 | 0.20% | 0.019% |
| 19 | 5.593 | 391 | 392 | 396 | rVB | 2416 | 2552 | 0.22% | 0.020% |
| 20 | 5.629 | 396 | 398 | 403 | rVB3 | 3051 | 3414 | 0.29% | 0.027% |
| 21 | 5.670 | 403 | 405 | 408 | rBV3 | 1876 | 2194 | 0.19% | 0.017% |
| 22 | 6.328 | 516 | 517 | 520 | rBV3 | 2636 | 2462 | 0.21% | 0.019% |
| 23 | 6.909 | 615 | 616 | 619 | rBV3 | 2220 | 1991 | 0.17% | 0.015% |
| 24 | 7.168 | 657 | 660 | 661 | rBV3 | 1883 | 2240 | 0.19% | 0.017% |
| 25 | 7.215 | 661 | 668 | 678 | rVB | 175068 | 293364 | 24.91% | 2.278% |
| 26 | 7.362 | 686 | 693 | 699 | rBV | 98494 | 167456 | 14.22% | 1.300% |
| 27 | 7.573 | 722 | 729 | 737 | rVB | 171677 | 291601 | 24.76% | 2.264% |
| 28 | 7.908 | 784 | 786 | 790 | rVB2 | 1773 | 2029 | 0.17% | 0.016% |
| 29 | 8.043 | 801 | 809 | 816 | rBV | 139227 | 232576 | 19.75% | 1.806% |
| 30 | 8.108 | 816 | 820 | 823 | rVV | 2614 | 3510 | 0.30% | 0.027% |
| 31 | 8.202 | 831 | 836 | 840 | rVV | 1680 | 2079 | 0.18% | 0.016% |
| 32 | 8.343 | 856 | 860 | 863 | rVB | 1743 | 1973 | 0.17% | 0.015% |
| 33 | 8.684 | 915 | 918 | 921 | rVB | 1871 | 2222 | 0.19% | 0.017% |
| 34 | 8.760 | 923 | 931 | 939 | rVV | 190596 | 340266 | 28.89% | 2.642% |
| 35 | 9.207 | 1000 | 1007 | 1015 | rBV3 | 181198 | 328879 | 27.93% | 2.554% |
| 36 | 9.636 | 1078 | 1080 | 1085 | rBV | 2455 | 2896 | 0.25% | 0.022% |

Data Path : Z:\svoasrv\HPCHEM1\BNA_G\Data\BG071724\
 Data File : BG062107.D
 Acq On : 17 Jul 2024 10:57
 Operator : MA/JU
 Sample : PB162043BL
 Misc :
 ALS Vial : 3 Sample Multiplier: 1

Instrument :
 BNA_G
 ClientSampleId :
 SBLK043

Integration Parameters: LSCINT.P

Integrator: RTE
 Smoothing : OFF Filtering: 5
 Sampling : 1 Min Area: 0.1 % of largest Peak
 Start Thrs: 0.2 Max Peaks: 100
 Stop Thrs : 0 Peak Location: TOP

If leading or trailing edge < 100 prefer < Baseline drop else tangent >
 Peak separation: 5

Method : Z:\svoasrv\HPCHEM1\BNA_G\Methods\SFAM-EPA-BG070224.MA.M
 Title : SVOA CALIBRATION

| | | | | | | | | | |
|----|--------|------|------|------|------|--------|--------|--------|--------|
| 37 | 9.935 | 1123 | 1131 | 1140 | rVB | 158322 | 281046 | 23.86% | 2.182% |
| 38 | 10.029 | 1144 | 1147 | 1150 | rBV | 1623 | 2603 | 0.22% | 0.020% |
| 39 | 10.235 | 1180 | 1182 | 1184 | rVB | 1999 | 1974 | 0.17% | 0.015% |
| 40 | 10.258 | 1184 | 1186 | 1188 | rBV | 3150 | 2614 | 0.22% | 0.020% |
| 41 | 10.482 | 1213 | 1224 | 1232 | rBV3 | 232098 | 412739 | 35.05% | 3.205% |
| 42 | 10.858 | 1280 | 1288 | 1296 | rBV | 215553 | 386834 | 32.85% | 3.004% |
| 43 | 10.993 | 1304 | 1311 | 1320 | rVB2 | 215338 | 402672 | 34.19% | 3.127% |
| 44 | 11.257 | 1355 | 1356 | 1359 | rBV2 | 2083 | 2067 | 0.18% | 0.016% |
| 45 | 11.486 | 1392 | 1395 | 1396 | rBV2 | 3348 | 1997 | 0.17% | 0.016% |
| 46 | 11.939 | 1468 | 1472 | 1473 | rBV | 1810 | 2473 | 0.21% | 0.019% |
| 47 | 12.062 | 1492 | 1493 | 1498 | rBV | 1567 | 2286 | 0.19% | 0.018% |
| 48 | 12.432 | 1551 | 1556 | 1561 | rBV3 | 3752 | 7205 | 0.61% | 0.056% |
| 49 | 13.008 | 1653 | 1654 | 1659 | rBV | 1911 | 2372 | 0.20% | 0.018% |
| 50 | 13.155 | 1676 | 1679 | 1681 | rBV | 1869 | 2656 | 0.23% | 0.021% |
| 51 | 13.513 | 1738 | 1740 | 1743 | rBV | 2192 | 2469 | 0.21% | 0.019% |
| 52 | 13.972 | 1814 | 1818 | 1820 | rBV | 2181 | 3190 | 0.27% | 0.025% |
| 53 | 14.078 | 1829 | 1836 | 1841 | rBV | 485665 | 705724 | 59.93% | 5.480% |
| 54 | 14.266 | 1865 | 1868 | 1870 | rBV | 2508 | 2779 | 0.24% | 0.022% |
| 55 | 14.283 | 1870 | 1871 | 1875 | rVV | 3318 | 2447 | 0.21% | 0.019% |
| 56 | 14.371 | 1879 | 1886 | 1893 | rVB | 453211 | 719904 | 61.13% | 5.590% |
| 57 | 14.677 | 1931 | 1938 | 1946 | rBV | 325337 | 490487 | 41.65% | 3.809% |
| 58 | 14.894 | 1968 | 1975 | 1986 | rBV | 193282 | 321343 | 27.29% | 2.495% |
| 59 | 15.059 | 2000 | 2003 | 2007 | rBV2 | 2895 | 4072 | 0.35% | 0.032% |
| 60 | 15.211 | 2026 | 2029 | 2030 | rBV2 | 3266 | 2911 | 0.25% | 0.023% |
| 61 | 15.282 | 2038 | 2041 | 2045 | rVB | 2552 | 3706 | 0.31% | 0.029% |
| 62 | 15.494 | 2075 | 2077 | 2079 | rVB | 3185 | 2656 | 0.23% | 0.021% |
| 63 | 15.517 | 2079 | 2081 | 2082 | rBV | 2208 | 2077 | 0.18% | 0.016% |
| 64 | 15.605 | 2092 | 2096 | 2097 | rBV2 | 3094 | 2677 | 0.23% | 0.021% |
| 65 | 15.670 | 2099 | 2107 | 2115 | rVB | 597681 | 914507 | 77.65% | 7.101% |
| 66 | 15.787 | 2121 | 2127 | 2139 | rVB2 | 239171 | 344706 | 29.27% | 2.677% |
| 67 | 15.899 | 2144 | 2146 | 2148 | rBV | 2107 | 2437 | 0.21% | 0.019% |
| 68 | 16.134 | 2185 | 2186 | 2190 | rBV2 | 1434 | 1972 | 0.17% | 0.015% |
| 69 | 16.246 | 2200 | 2205 | 2207 | rBV3 | 3038 | 3461 | 0.29% | 0.027% |
| 70 | 16.287 | 2207 | 2212 | 2215 | rVV2 | 2170 | 3180 | 0.27% | 0.025% |
| 71 | 16.410 | 2232 | 2233 | 2236 | rBV | 2038 | 2281 | 0.19% | 0.018% |
| 72 | 16.445 | 2236 | 2239 | 2242 | rVV4 | 5221 | 6103 | 0.52% | 0.047% |
| 73 | 16.486 | 2245 | 2246 | 2249 | rBV | 1796 | 1985 | 0.17% | 0.015% |
| 74 | 16.992 | 2329 | 2332 | 2333 | rBV | 3527 | 2681 | 0.23% | 0.021% |
| 75 | 17.139 | 2354 | 2357 | 2358 | rVB | 3124 | 1993 | 0.17% | 0.015% |
| 76 | 17.209 | 2367 | 2369 | 2372 | rBV2 | 2481 | 3292 | 0.28% | 0.026% |

Data Path : Z:\svoasrv\HPCHEM1\BNA_G\Data\BG071724\
 Data File : BG062107.D
 Acq On : 17 Jul 2024 10:57
 Operator : MA/JU
 Sample : PB162043BL
 Misc :
 ALS Vial : 3 Sample Multiplier: 1

Instrument :
 BNA_G
 ClientSampleId :
 SBLK043

Integration Parameters: LSCINT.P

Integrator: RTE
 Smoothing : OFF Filtering: 5
 Sampling : 1 Min Area: 0.1 % of largest Peak
 Start Thrs: 0.2 Max Peaks: 100
 Stop Thrs : 0 Peak Location: TOP

If leading or trailing edge < 100 prefer < Baseline drop else tangent >
 Peak separation: 5

Method : Z:\svoasrv\HPCHEM1\BNA_G\Methods\SFAM-EPA-BG070224.MA.M
 Title : SVOA CALIBRATION

| | | | | | | | | | |
|-----|--------|------|------|------|------|--------|---------|---------|--------|
| 77 | 17.244 | 2372 | 2375 | 2376 | rBV2 | 2073 | 2159 | 0.18% | 0.017% |
| 78 | 17.421 | 2399 | 2405 | 2412 | rBV | 524826 | 769303 | 65.32% | 5.974% |
| 79 | 17.521 | 2416 | 2422 | 2429 | rBV | 725124 | 1060513 | 90.05% | 8.235% |
| 80 | 17.667 | 2444 | 2447 | 2450 | rBV3 | 2499 | 3002 | 0.25% | 0.023% |
| 81 | 17.697 | 2450 | 2452 | 2455 | rVB2 | 2950 | 2555 | 0.22% | 0.020% |
| 82 | 17.720 | 2455 | 2456 | 2458 | rBV | 2682 | 2213 | 0.19% | 0.017% |
| 83 | 17.844 | 2474 | 2477 | 2480 | rBV3 | 1866 | 3151 | 0.27% | 0.024% |
| 84 | 17.949 | 2493 | 2495 | 2497 | rVB2 | 3483 | 2478 | 0.21% | 0.019% |
| 85 | 18.061 | 2512 | 2514 | 2518 | rVB4 | 5807 | 6372 | 0.54% | 0.049% |
| 86 | 18.196 | 2533 | 2537 | 2538 | rBV | 2632 | 3113 | 0.26% | 0.024% |
| 87 | 18.296 | 2552 | 2554 | 2555 | rBV | 2807 | 2719 | 0.23% | 0.021% |
| 88 | 18.431 | 2576 | 2577 | 2580 | rBV2 | 3164 | 3857 | 0.33% | 0.030% |
| 89 | 18.490 | 2585 | 2587 | 2589 | rBV | 3442 | 2777 | 0.24% | 0.022% |
| 90 | 18.543 | 2592 | 2596 | 2597 | rBV3 | 2706 | 2964 | 0.25% | 0.023% |
| 91 | 18.572 | 2600 | 2601 | 2602 | rBV | 4767 | 2556 | 0.22% | 0.020% |
| 92 | 18.655 | 2614 | 2615 | 2618 | rBV2 | 4398 | 3628 | 0.31% | 0.028% |
| 93 | 18.719 | 2623 | 2626 | 2628 | rBV3 | 5139 | 6354 | 0.54% | 0.049% |
| 94 | 18.760 | 2631 | 2633 | 2635 | rBV3 | 2885 | 2758 | 0.23% | 0.021% |
| 95 | 18.813 | 2640 | 2642 | 2645 | rBV | 3397 | 2676 | 0.23% | 0.021% |
| 96 | 19.365 | 2733 | 2736 | 2741 | rBV4 | 13862 | 16892 | 1.43% | 0.131% |
| 97 | 19.806 | 2805 | 2811 | 2822 | rVB | 822650 | 1177658 | 100.00% | 9.145% |
| 98 | 21.680 | 3124 | 3130 | 3141 | rVB2 | 462180 | 780934 | 66.31% | 6.064% |
| 99 | 24.683 | 3633 | 3641 | 3652 | rVB2 | 428917 | 1143575 | 97.11% | 8.880% |
| 100 | 24.906 | 3671 | 3679 | 3690 | rVB | 312590 | 865603 | 73.50% | 6.722% |

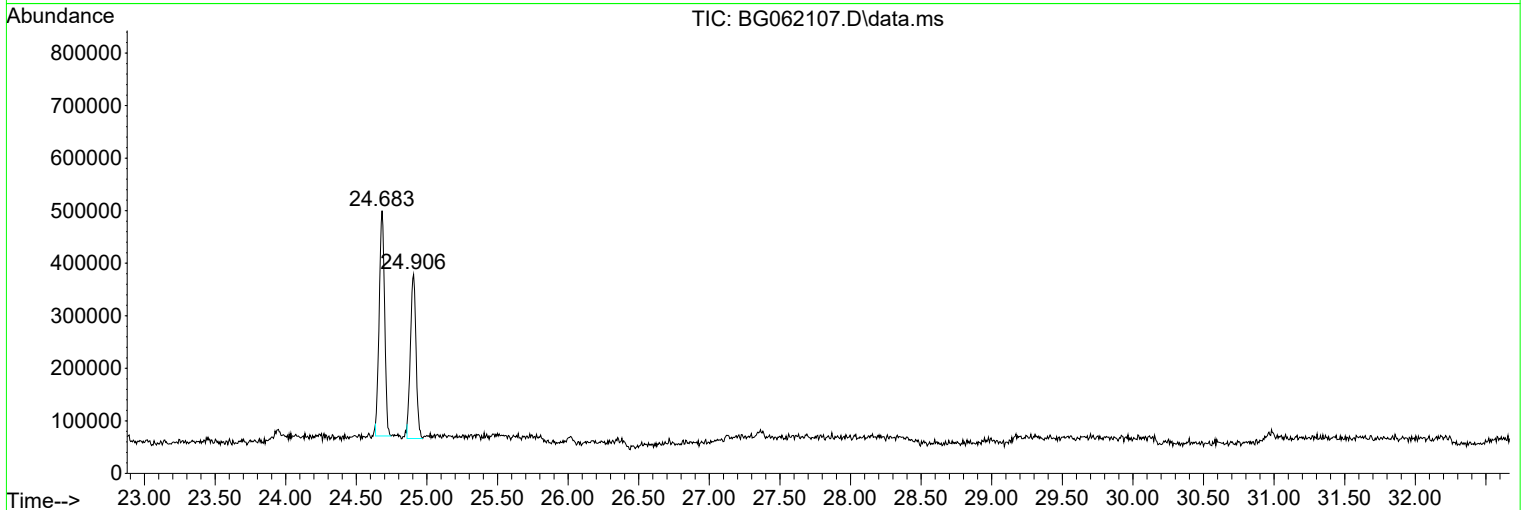
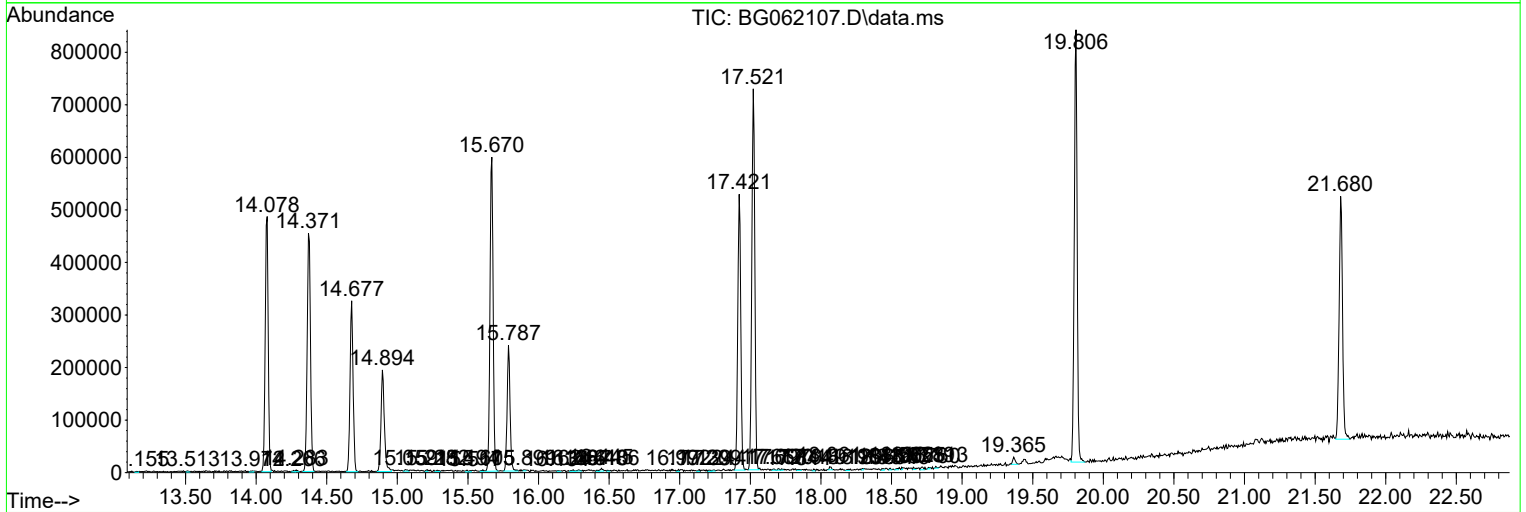
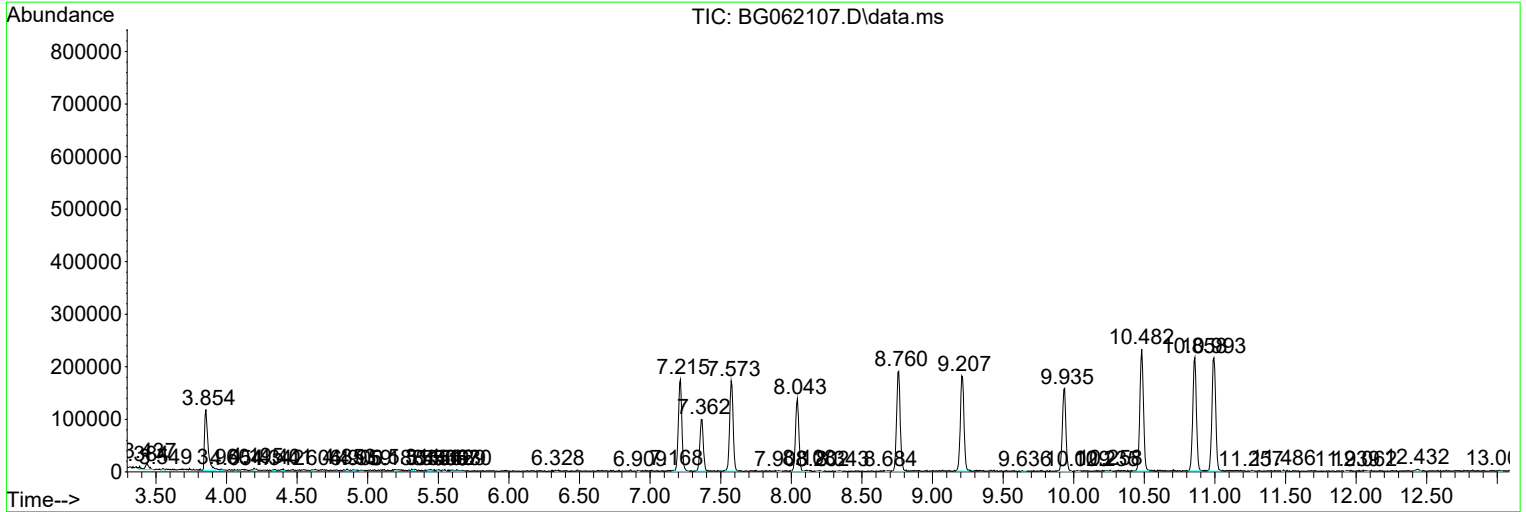
Sum of corrected areas: 12877815

Data Path : Z:\svoasrv\HPCHEM1\BNA_G\Data\BG071724\
 Data File : BG062107.D
 Acq On : 17 Jul 2024 10:57
 Operator : MA/JU
 Sample : PB162043BL
 Misc :
 ALS Vial : 3 Sample Multiplier: 1

Instrument :
 BNA_G
ClientSampleId :
 SBLK043

Quant Method : Z:\svoasrv\HPCHEM1\BNA_G\Methods\SFAM-EPA-BG070224.MA.M
 Quant Title : SVOA CALIBRATION

TIC Library : C:\DATABASE\NIST20.L
 TIC Integration Parameters: LSCINT.P



Library Search Compound Report

Data Path : Z:\svoasrv\HPCHEM1\BNA_G\Data\BG071724\
Data File : BG062107.D
Acq On : 17 Jul 2024 10:57
Operator : MA/JU
Sample : PB162043BL
Misc :
ALS Vial : 3 Sample Multiplier: 1

Instrument :
BNA_G
ClientSampleId :
SBLK043

Quant Method : Z:\svoasrv\HPCHEM1\BNA_G\Methods\SFAM-EPA-BG070224.MA.M
Quant Title : SVOA CALIBRATION

TIC Library : C:\DATABASE\NIST20.L
TIC Integration Parameters: LSCINT.P

No Library Search Compounds Detected

Data Path : Z:\svoasrv\HPCHEM1\BNA_G\Data\BG071724\
Data File : BG062107.D
Acq On : 17 Jul 2024 10:57
Operator : MA/JU
Sample : PB162043BL
Misc :
ALS Vial : 3 Sample Multiplier: 1

Instrument :
BNA_G
ClientSampleId :
SBLK043

Quant Method : Z:\svoasrv\HPCHEM1\BNA_G\Methods\SFAM-EPA-BG070224.MA.M
Quant Title : SVOA CALIBRATION

TIC Library : C:\DATABASE\NIST0.L
TIC Integration Parameters: LSCINT.P

| TIC Top Hit name | RT | EstConc | Units | Response | # | RT | Resp | Conc |
|------------------|----|---------|-------|----------|---|----|------|------|
|------------------|----|---------|-------|----------|---|----|------|------|
