

Data Path : Z:\HPCHEM1\BNA G\DATA\BG071916\
 Data File : BG023174.D
 Acq On : 19 Jul 2016 13:26
 Operator : UM/SJ
 Sample : H4044-01
 Misc :
 ALS Vial : 4 Sample Multiplier: 1

Instrument :
 BNA_G
 ClientSampleId :
 G9-B2(6-12)C

Quant Time: Jul 20 01:06:14 2016
 Quant Method : Z:\HPCHEM1\BNA G\METHODS\8270-BG070816.M
 Quant Title : ASP BNA STANDARDS FOR 5 POINT CALIBRATION
 QLast Update : Tue Jul 19 15:46:37 2016
 Response via : Initial Calibration

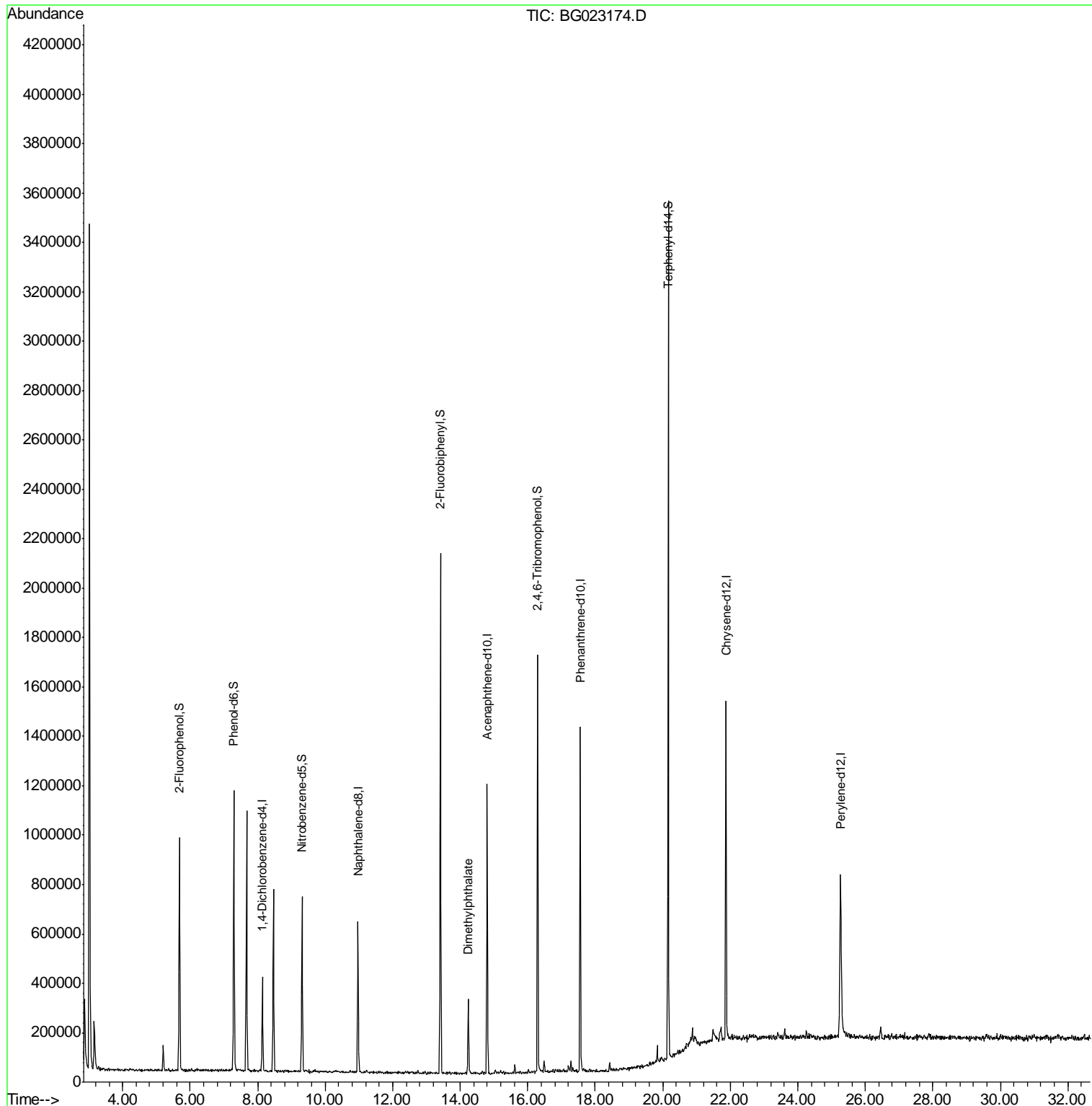
Internal Standards	R.T.	QIon	Response	Conc	Units	Dev(Min)
1) 1,4-Dichlorobenzene-d4	8.14	152	95869	20.00	ng	0.00
21) Naphthalene-d8	10.97	136	489608	20.00	ng	0.00
38) Acenaphthene-d10	14.80	164	375423	20.00	ng	0.00
63) Phenanthrene-d10	17.55	188	852121	20.00	ng	0.00
75) Chrysene-d12	21.87	240	845364	20.00	ng	0.00
86) Perylene-d12	25.27	264	814519	20.00	ng	0.00
System Monitoring Compounds						
5) 2-Fluorophenol	5.68	112	385380	65.75	ng	0.00
7) Phenol-d6	7.29	99	637538	69.44	ng	0.00
23) Nitrobenzene-d5	9.32	82	480265	42.00	ng	0.00
41) 2,4,6-Tribromophenol	16.30	330	302979	44.90	ng	0.00
44) 2-Fluorobiphenyl	13.42	172	1051065	44.10	ng	0.00
78) Terphenyl-d14	20.16	244	1437406	44.30	ng	0.00
Target Compounds						Qvalue
49) Dimethylphthalate	14.24	163	192695	6.28	ng	98

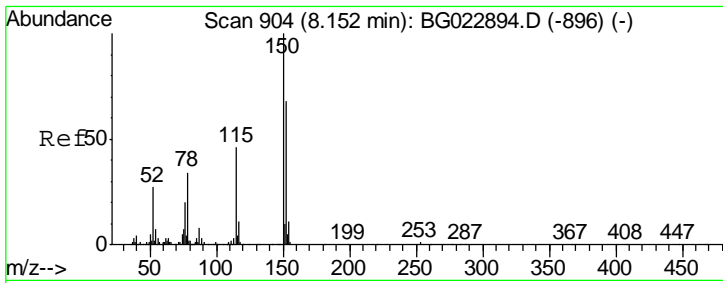
(#) = qualifier out of range (m) = manual integration (+) = signals summed

Data Path : Z:\HPCHEM1\BNA G\DATA\BG071916\
 Data File : BG023174.D
 Acq On : 19 Jul 2016 13:26
 Operator : UM/SJ
 Sample : H4044-01
 Misc :
 ALS Vial : 4 Sample Multiplier: 1

Instrument :
 BNA_G
 ClientSampleId :
 G9-B2(6-12)C

Quant Time: Jul 20 01:06:14 2016
 Quant Method : Z:\HPCHEM1\BNA G\METHODS\8270-BG070816.M
 Quant Title : ASP BNA STANDARDS FOR 5 POINT CALIBRATION
 QLast Update : Tue Jul 19 15:46:37 2016
 Response via : Initial Calibration

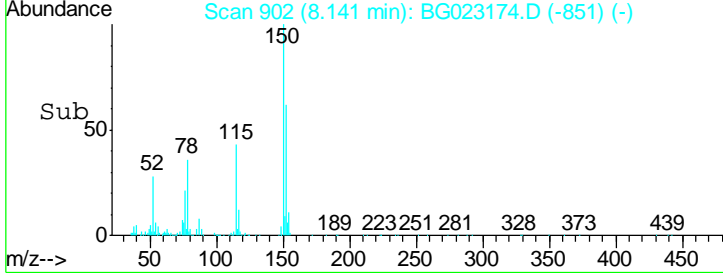
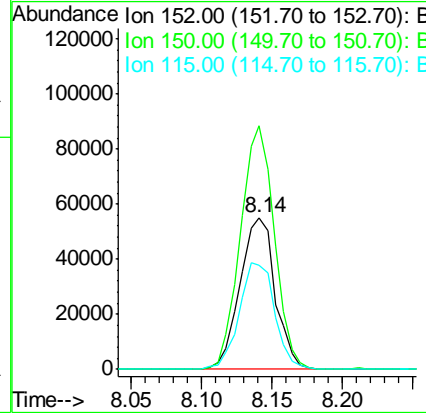
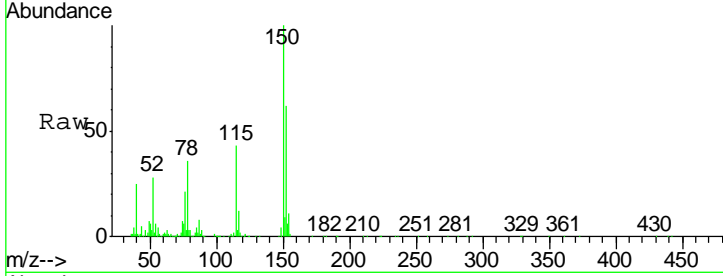




#1
 1,4-Dichlorobenzene-d4
 Concen: 20.00 ng
 RT: 8.14 min Scan# 902
 Delta R.T. -0.00 min
 Lab File: BG023174.D
 Acq: 19 Jul 2016 13:26

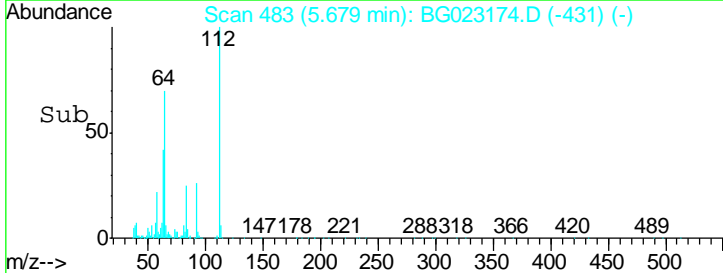
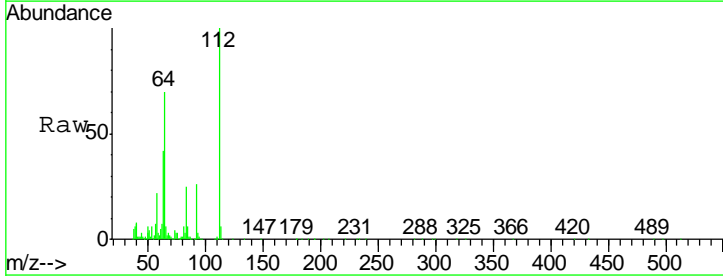
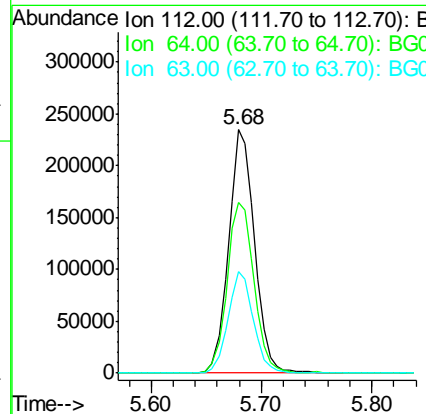
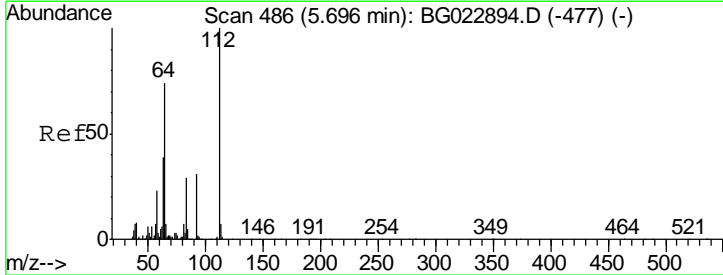
Instrument :
 BNA_G
ClientSampleId :
 G9-B2(6-12)C

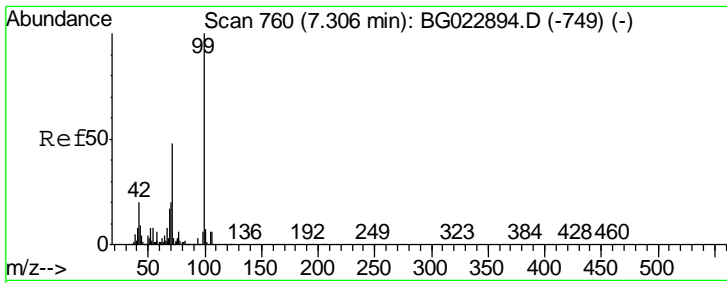
Tgt Ion	Resp	Lower	Upper
152	95869		
150	160.5	144.7	217.1
115	68.9	64.0	96.0



#5
 2-Fluorophenol
 Concen: 65.75 ng
 RT: 5.68 min Scan# 483
 Delta R.T. 0.00 min
 Lab File: BG023174.D
 Acq: 19 Jul 2016 13:26

Tgt Ion	Resp	Lower	Upper
112	385380		
64	70.1	59.0	88.4
63	41.8	37.8	56.8

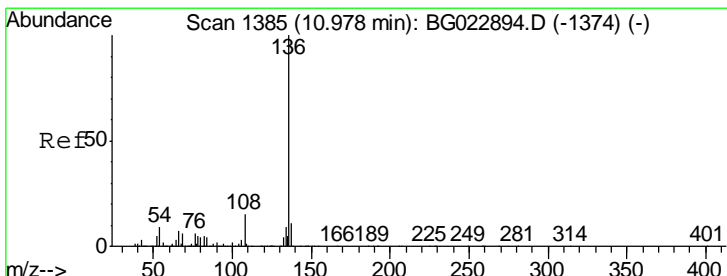
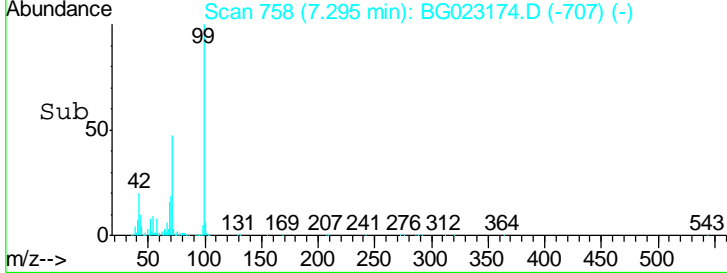
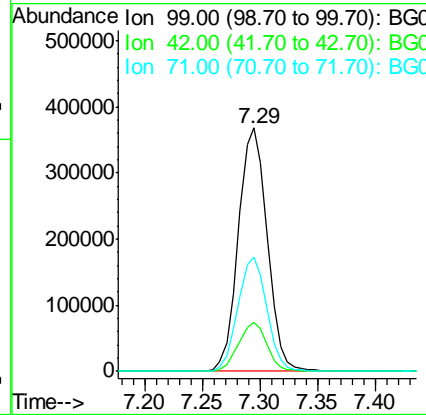
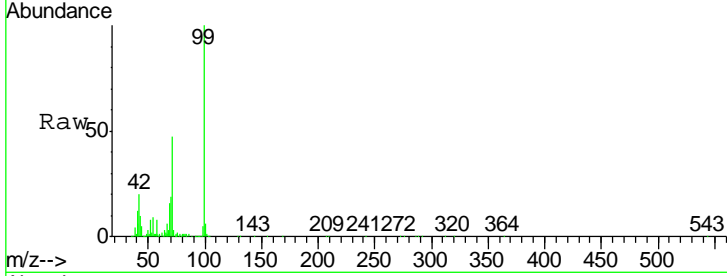




#7
 Phenol-d6
 Concen: 69.44 ng
 RT: 7.29 min Scan# 758
 Delta R.T. -0.00 min
 Lab File: BG023174.D
 Acq: 19 Jul 2016 13:26

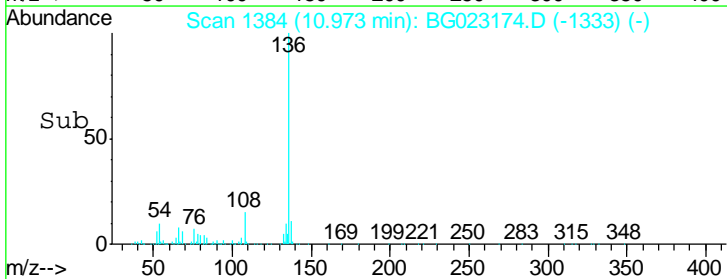
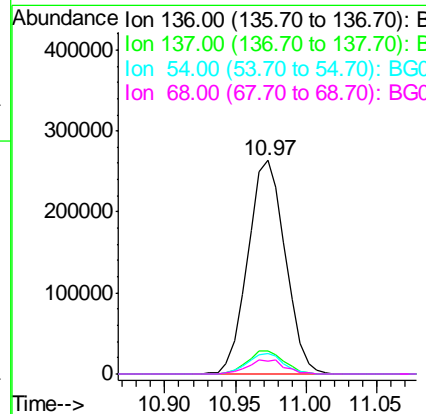
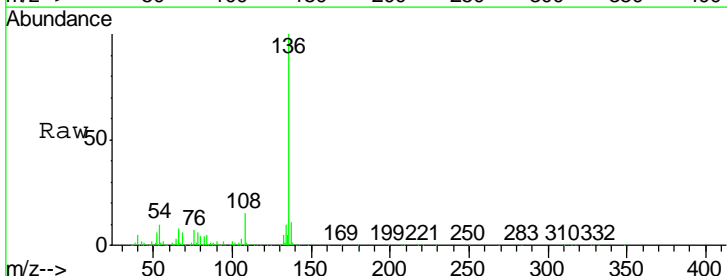
Instrument :
 BNA_G
 ClientSampled :
 G9-B2(6-12)C

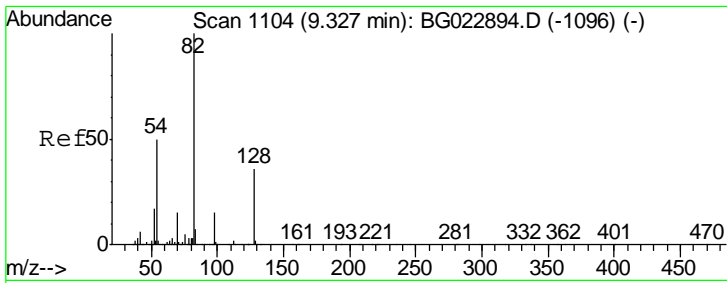
Tgt Ion	Resp	Lower	Upper
99	637538		
42	20.2	17.8	26.6
71	46.9	41.5	62.3



#21
 Naphthalene-d8
 Concen: 20.00 ng
 RT: 10.97 min Scan# 1384
 Delta R.T. -0.00 min
 Lab File: BG023174.D
 Acq: 19 Jul 2016 13:26

Tgt Ion	Resp	Lower	Upper
136	489608		
137	10.8	9.6	14.4
54	9.8	7.3	10.9
68	6.2	5.3	7.9

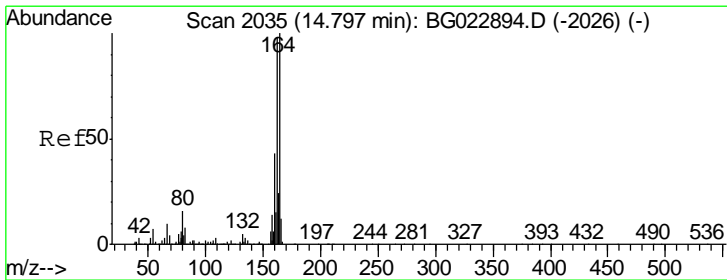
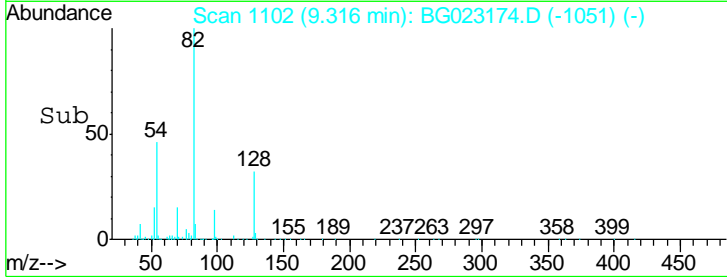
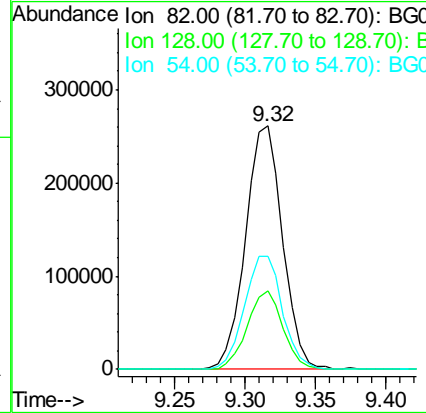
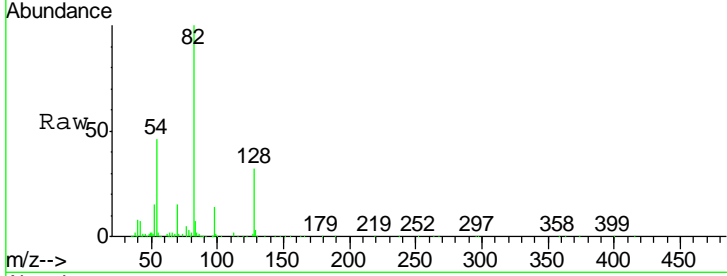




#23
 Nitrobenzene-d5
 Concen: 42.00 ng
 RT: 9.32 min Scan# 1102
 Delta R.T. -0.00 min
 Lab File: BG023174.D
 Acq: 19 Jul 2016 13:26

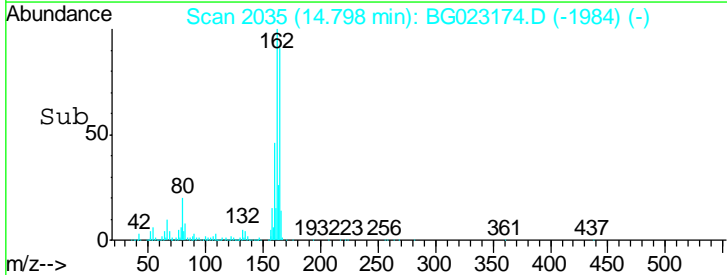
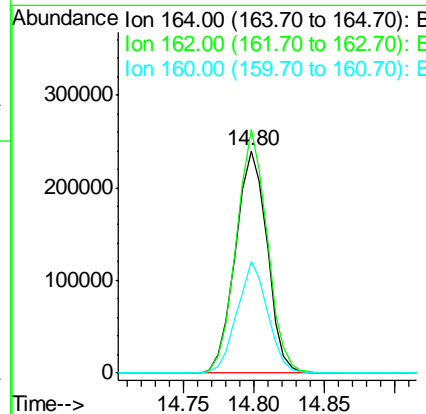
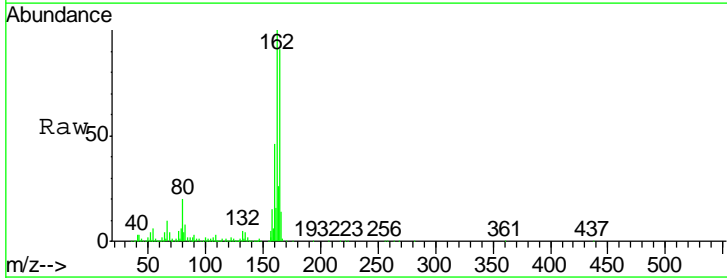
Instrument :
 BNA_G
 ClientSampled :
 G9-B2(6-12)C

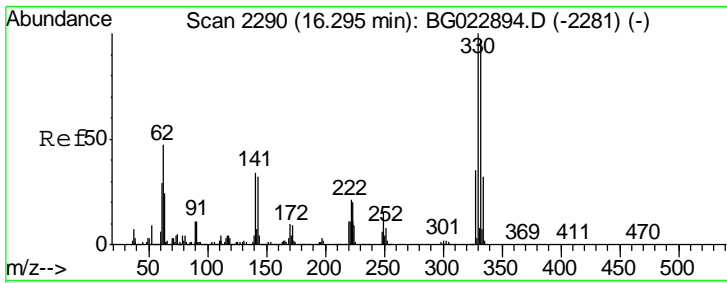
Tgt Ion	Resp	Lower	Upper
82	480265		
128	32.0	24.4	36.6
54	46.3	41.4	62.0



#38
 Acenaphthene-d10
 Concen: 20.00 ng
 RT: 14.80 min Scan# 2035
 Delta R.T. -0.00 min
 Lab File: BG023174.D
 Acq: 19 Jul 2016 13:26

Tgt Ion	Resp	Lower	Upper
164	375423		
162	109.6	87.7	131.5
160	50.6	37.2	55.8

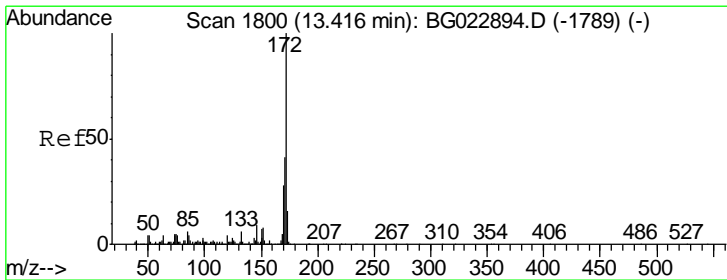
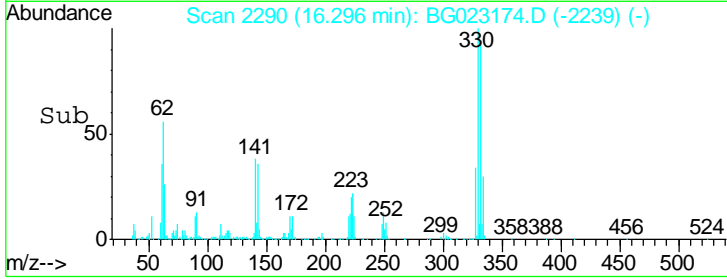
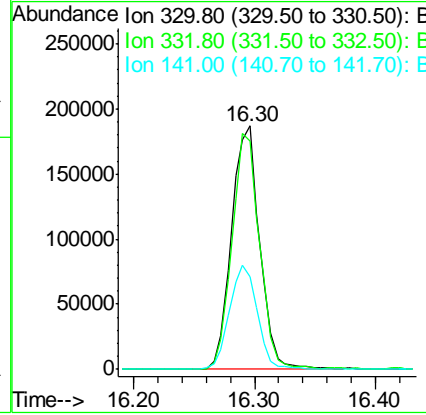
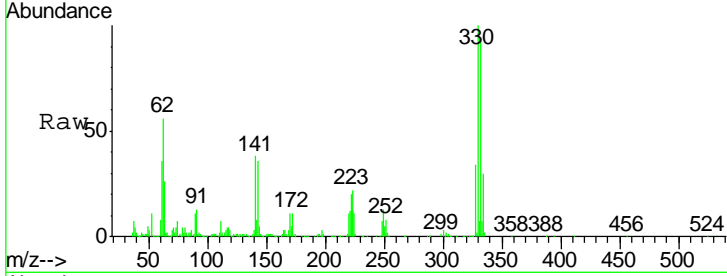




#41
 2,4,6-Tribromophenol
 Concen: 44.90 ng
 RT: 16.30 min Scan# 2290
 Delta R.T. -0.00 min
 Lab File: BG023174.D
 Acq: 19 Jul 2016 13:26

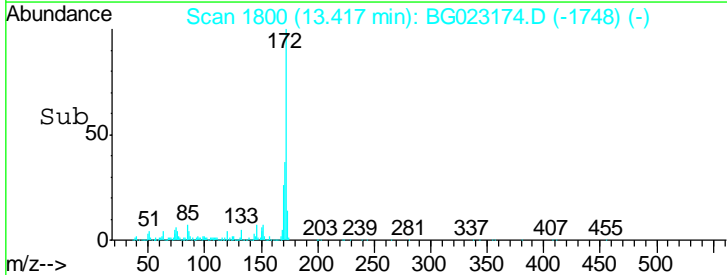
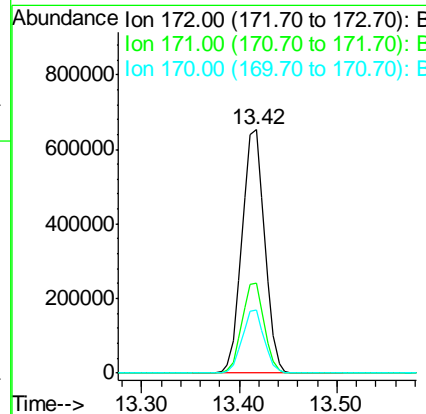
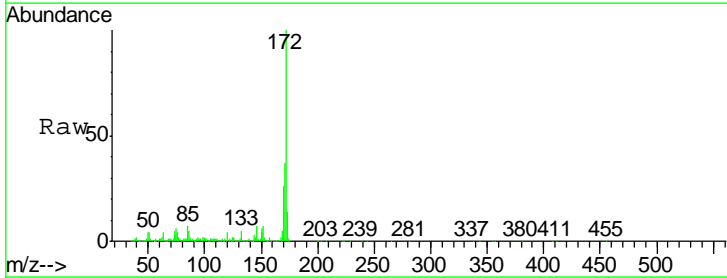
Instrument :
 BNA_G
 ClientSampleId :
 G9-B2(6-12)C

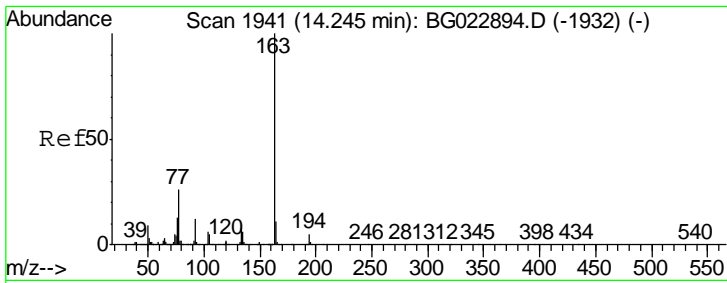
Tgt Ion	Resp	Lower	Upper
330	100		
332	94.8	77.4	116.2
141	42.0	31.7	47.5



#44
 2-Fluorobiphenyl
 Concen: 44.10 ng
 RT: 13.42 min Scan# 1800
 Delta R.T. 0.00 min
 Lab File: BG023174.D
 Acq: 19 Jul 2016 13:26

Tgt Ion	Resp	Lower	Upper
172	100		
171	37.0	31.6	47.4
170	26.0	21.3	31.9

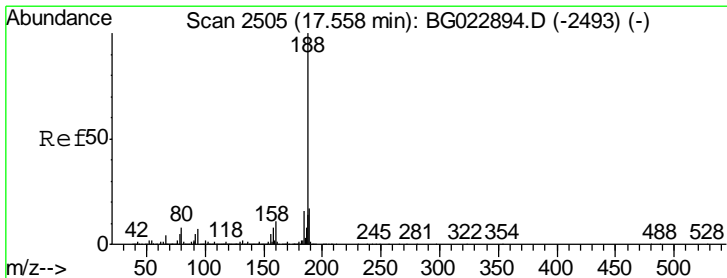
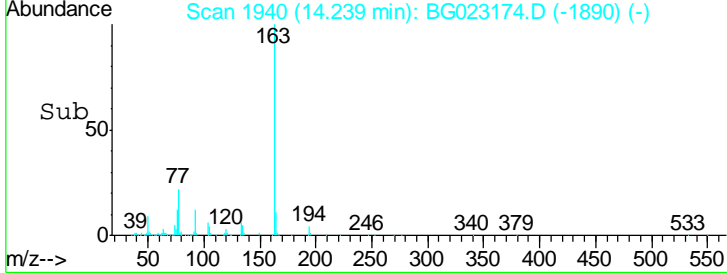
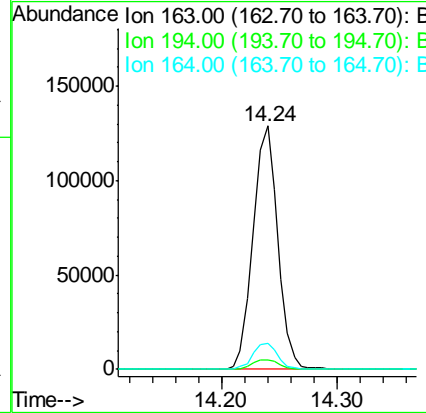
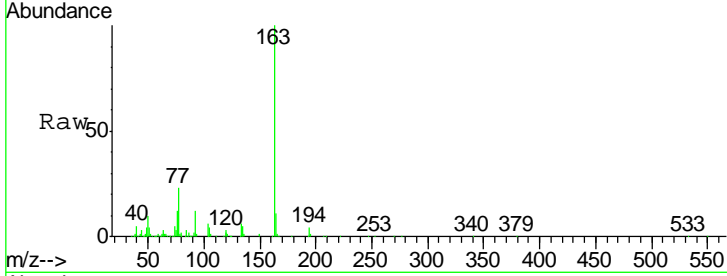




#49
 Dimethylphthalate
 Concen: 6.28 ng
 RT: 14.24 min Scan# 1940
 Delta R.T. -0.01 min
 Lab File: BG023174.D
 Acq: 19 Jul 2016 13:26

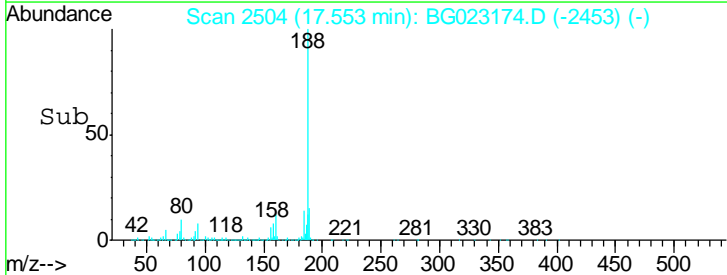
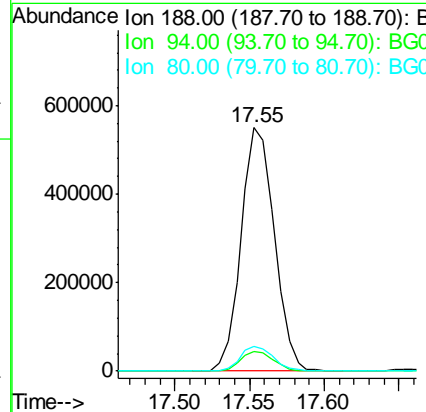
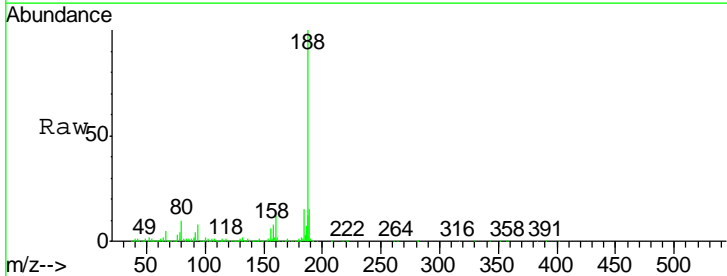
Instrument :
 BNA_G
 ClientSampled :
 G9-B2(6-12)C

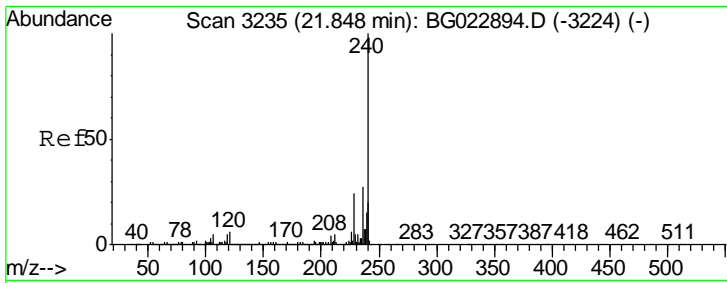
Tgt Ion	Resp	Lower	Upper
163	192695		
194	3.6	3.6	5.4
164	10.8	8.1	12.1



#63
 Phenanthrene-d10
 Concen: 20.00 ng
 RT: 17.55 min Scan# 2504
 Delta R.T. -0.00 min
 Lab File: BG023174.D
 Acq: 19 Jul 2016 13:26

Tgt Ion	Resp	Lower	Upper
188	852121		
94	8.2	5.2	7.8#
80	10.0	7.2	10.8

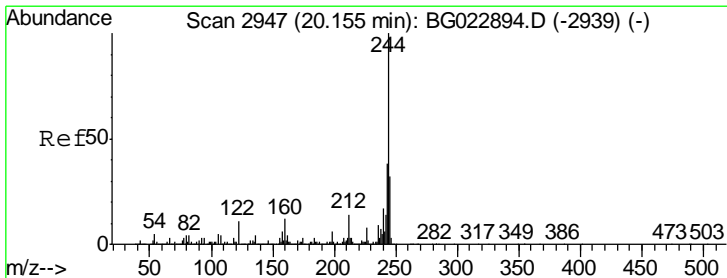
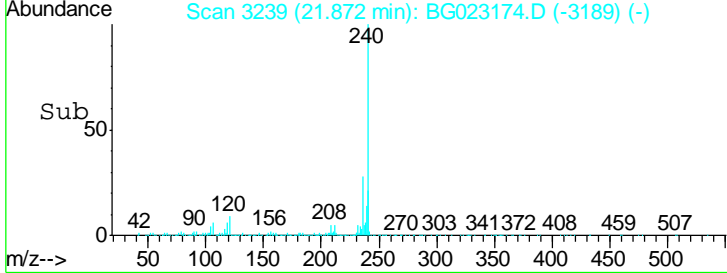
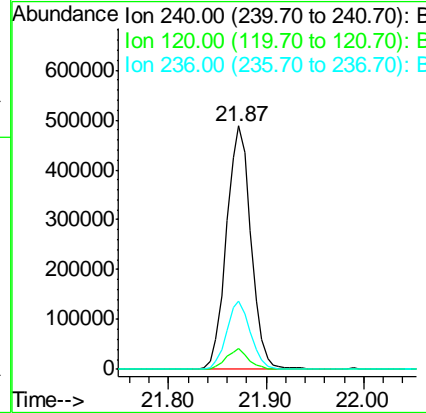
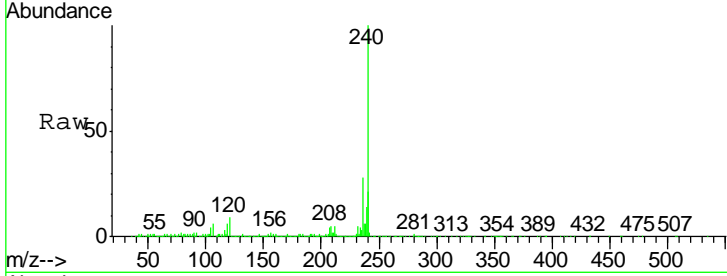




#75
 Chrysene-d12
 Concen: 20.00 ng
 RT: 21.87 min Scan# 3239
 Delta R.T. -0.01 min
 Lab File: BG023174.D
 Acq: 19 Jul 2016 13:26

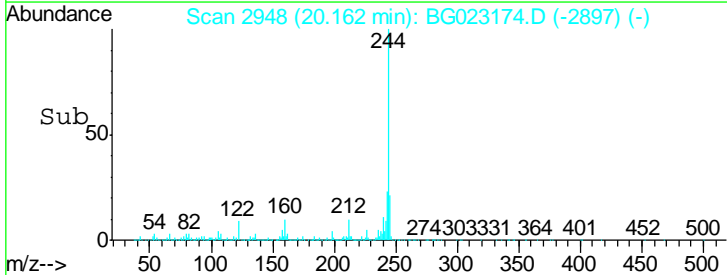
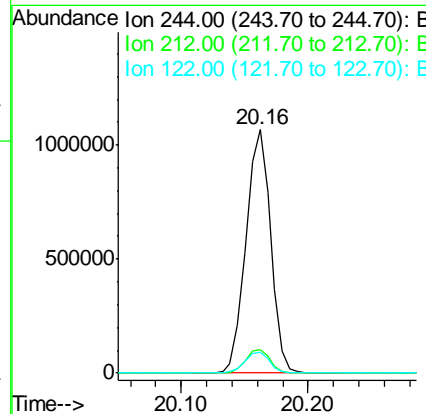
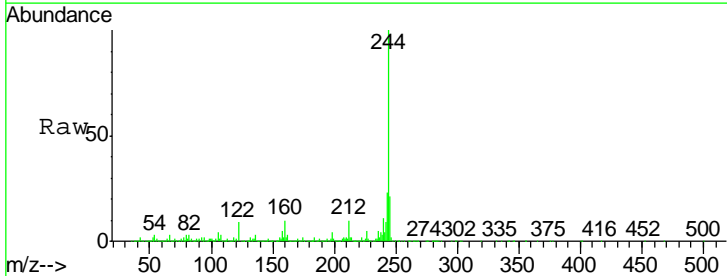
Instrument :
 BNA_G
 ClientSampled :
 G9-B2(6-12)C

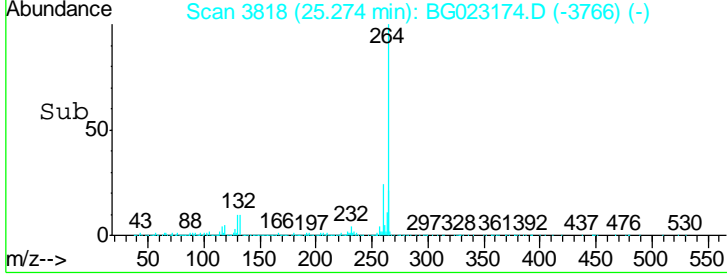
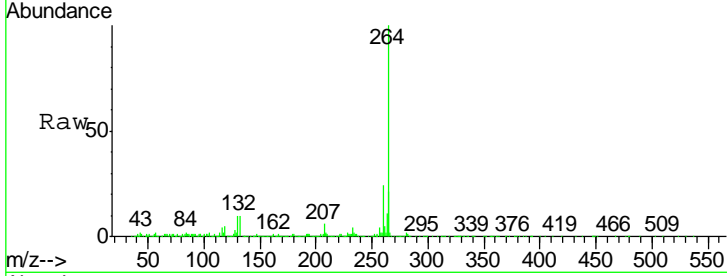
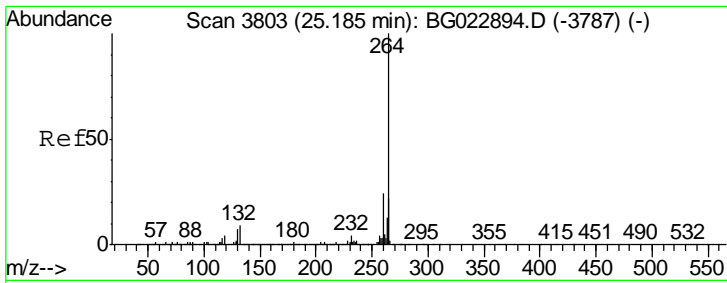
Tgt Ion	Resp	Lower	Upper
240	100		
120	8.8	4.1	6.1#
236	28.2	21.1	31.7



#78
 Terphenyl-d14
 Concen: 44.30 ng
 RT: 20.16 min Scan# 2948
 Delta R.T. -0.00 min
 Lab File: BG023174.D
 Acq: 19 Jul 2016 13:26

Tgt Ion	Resp	Lower	Upper
244	100		
212	9.8	10.8	16.2#
122	8.7	8.0	12.0





#86
 Perylene-d12
 Concen: 20.00 ng
 RT: 25.27 min Scan# 3818
 Delta R.T. 0.00 min
 Lab File: BG023174.D
 Acq: 19 Jul 2016 13:26

Instrument :
 BNA_G
 ClientSampled :
 G9-B2(6-12)C

Tot Ion	Ratio	Lower	Upper
264	100		
260	24.1	18.4	27.6
265	21.4	18.9	28.3

