

Data Path : Z:\HPCHEM1\BNA G\DATA\BG071917\
 Data File : BG027968.D
 Acq On : 19 Jul 2017 18:55
 Operator : SJ/JU
 Sample : I4213-05
 Misc :
 ALS Vial : 8 Sample Multiplier: 1

Instrument :
 BNA_G
 ClientSampleId :
 C0B29

Quant Time: Jul 20 04:55:45 2017
 Quant Method : Z:\HPCHEM1\BNA G\METHODS\SOM-EPA-BG071717.M
 Quant Title : SVOA CALIBRATION
 QLast Update : Thu Jul 20 02:43:07 2017
 Response via : Initial Calibration

Internal Standards	R.T.	QIon	Response	Conc	Units	Dev(Min)
1) 1,4-Dichlorobenzene-d4	8.37	152	49653	20.00	ng/ul	-0.02
18) Naphthalene-d8	11.19	136	212170	20.00	ng/ul	-0.01
35) Acenaphthene-d10	14.98	164	148945	20.00	ng/ul	0.00
61) Phenanthrene-d10	17.72	188	377231	20.00	ng/ul	-0.01
75) Chrysene-d12	22.06	240	463876	20.00	ng/ul	0.00
83) Perylene-d12	25.57	264	440141	20.00	ng/ul	-0.01

System Monitoring Compounds

3) 1,4-Dioxane-d8	3.86	96	5411	6.01	ng/uL	-0.01
5) Phenol-d5	7.51	99	114479	28.05	ng/ul	-0.01
7) Bis-(2-Chloroethyl)ether-d	7.68	67	67946	28.88	ng/ul	-0.02
9) 2-Chlorophenol-d4	7.90	132	95844	29.90	ng/ul	-0.02
13) 4-Methylphenol-d8	9.06	113	101318	30.00	ng/ul	-0.02
19) Nitrobenzene-d5	9.54	128	46670	29.89	ng/ul	-0.01
22) 2-Nitrophenol-d4	10.26	143	58288	31.04	ng/ul	-0.01
26) 2,4-Dichlorophenol-d3	10.80	165	109525	29.80	ng/ul	-0.01
29) 4-Chloroaniline-d4	11.32	131	127615	38.41	ng/ul	-0.01
43) Dimethylphthalate-d6	14.36	166	465701	36.07	ng/ul	-0.01
46) Acenaphthylene-d8	14.67	160	480621	32.75	ng/ul	-0.01
51) 4-Nitrophenol-d4	15.16	143	40626	21.73	ng/ul	0.00
57) Fluorene-d10	15.96	176	404348	33.22	ng/ul	0.00
62) 4,6-Dinitro-2-methylphenol	16.07	200	53939	20.59	ng/ul	-0.01
70) Anthracene-d10	17.82	188	650201	35.74	ng/ul	-0.01
76) Pyrene-d10	20.09	212	813024	39.01	ng/ul	0.00
87) Benzo(a)pyrene-d12	25.33	264	773549	37.63	ng/ul	-0.01

Target Compounds

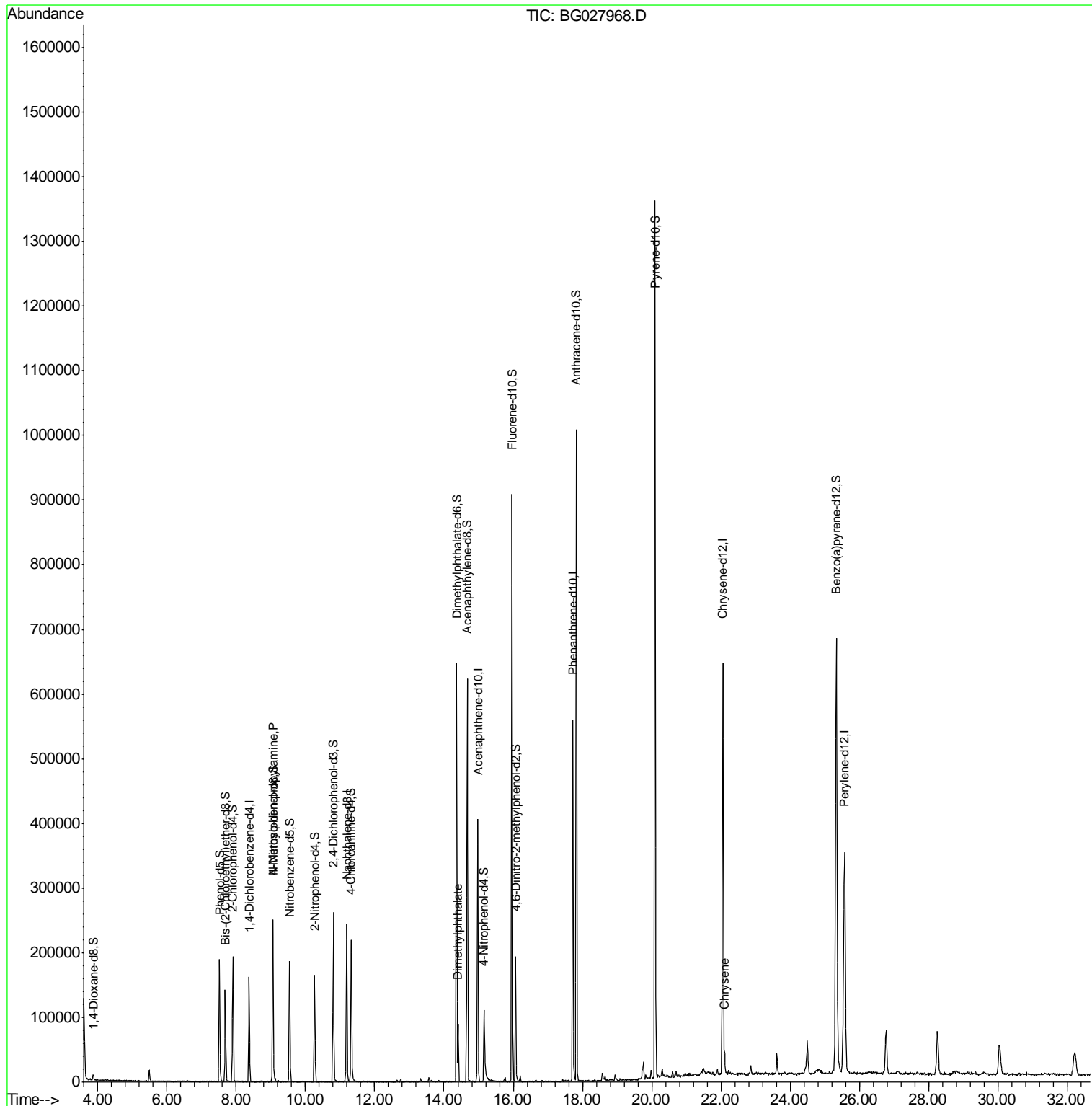
					Ovalue	
15) N-Nitroso-di-n-propylamine	9.06	70	2764	1.132	ng/ul#	1
44) Dimethylphthalate	14.41	163	60384	5.136	ng/ul	98
82) Chrysene	22.10	228	23352	1.022	ng/ul	95

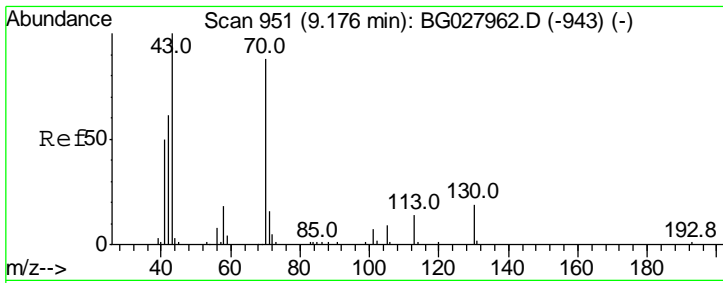
(#) = qualifier out of range (m) = manual integration (+) = signals summed

Data Path : Z:\HPCHEM1\BNA G\DATA\BG071917\
 Data File : BG027968.D
 Acq On : 19 Jul 2017 18:55
 Operator : SJ/JU
 Sample : I4213-05
 Misc :
 ALS Vial : 8 Sample Multiplier: 1

Instrument :
 BNA_G
 ClientSampleId :
 C0B29

Quant Time: Jul 20 04:55:45 2017
 Quant Method : Z:\HPCHEM1\BNA G\METHODS\SOM-EPA-BG071717.M
 Quant Title : SVOA CALIBRATION
 QLast Update : Thu Jul 20 02:43:07 2017
 Response via : Initial Calibration

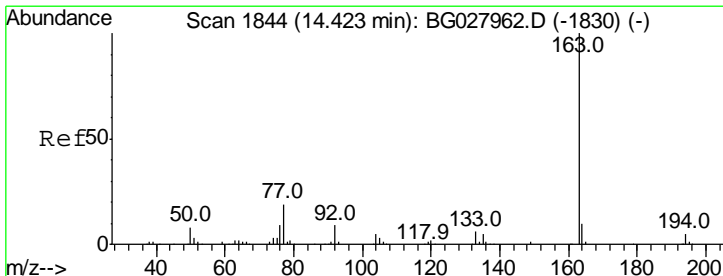
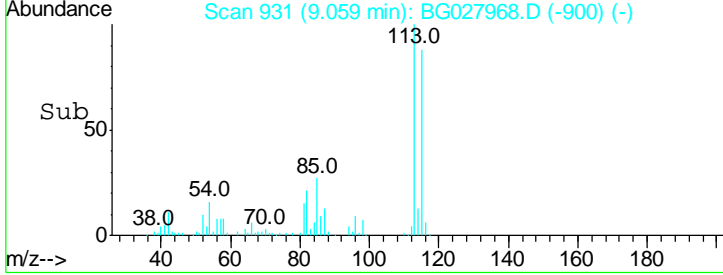
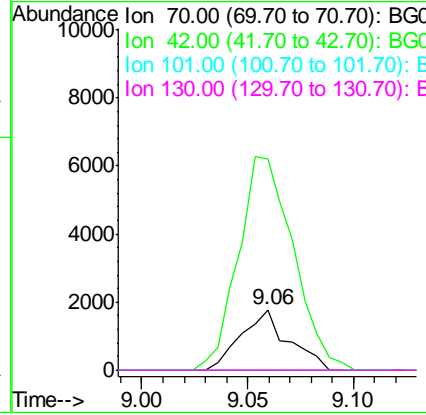
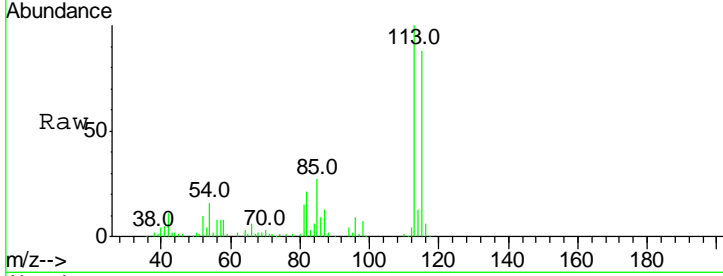




#15
 N-Nitroso-di-n-propylamine
 Concen: 1.132 ng/ul
 RT: 9.06 min Scan# 931
 Delta R.T. -0.12 min
 Lab File: BG027968.D
 Acq: 19 Jul 2017 18:55

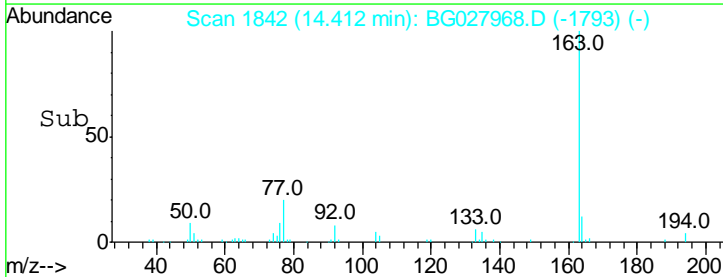
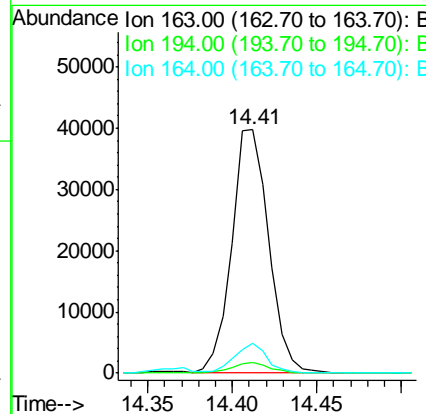
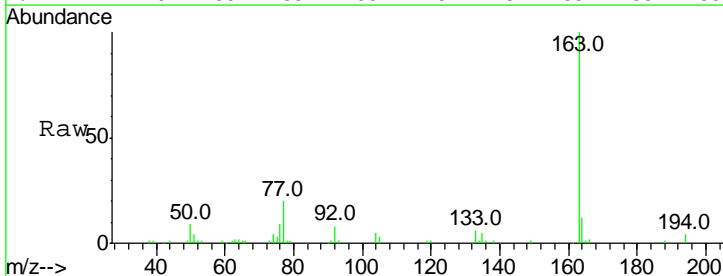
Instrument :
 BNA_G
ClientSampled :
 C0B29

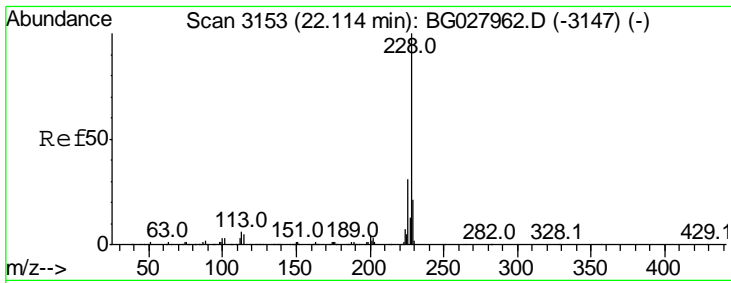
Tgt Ion	Resp	Lower	Upper
70	100		
42	346.9	59.0	88.6#
101	0.0	6.6	9.8#
130	0.0	15.6	23.4#



#44
 Dimethylphthalate
 Concen: 5.136 ng/ul
 RT: 14.41 min Scan# 1842
 Delta R.T. -0.01 min
 Lab File: BG027968.D
 Acq: 19 Jul 2017 18:55

Tgt Ion	Resp	Lower	Upper
163	100		
194	4.3	3.4	5.0
164	12.2	9.0	13.4





#82
 Chrysene
 Concen: 1.022 ng/ul
 RT: 22.10 min Scan# 3151
 Delta R.T. -0.01 min
 Lab File: BG027968.D
 Acq: 19 Jul 2017 18:55

Instrument :
 BNA_G
ClientSampled :
 C0B29

Tot Ion	228	Resp	23352
Ion Ratio	Lower	Upper	
228	100		
226	31.4	24.0	36.0
229	17.1	16.9	25.3

