

Data Path : Z:\HPCHEM1\BNA_G\DATA\BG072315\
 Data File : BG018077.D
 Acq On : 23 Jul 2015 22:38
 Operator : TP/UM
 Sample : G3035-05
 Misc :
 ALS Vial : 18 Sample Multiplier: 1

Instrument :
 BNA_G
 ClientSampleId :
 C01K1

Integration Parameters: LSCINT.P

Integrator: RTE
 Smoothing : OFF
 Sampling : 1
 Start Thrs: 0.2
 Stop Thrs : 0

Filtering: 5
 Min Area: 0.1 % of largest Peak
 Max Peaks: 100
 Peak Location: TOP

If leading or trailing edge < 100 prefer < Baseline drop else tangent >
 Peak separation: 5

Method : Z:\HPCHEM1\BNA_G\METHODS\SOM02.2-EPA-BG072315.M
 Title : SVOA CALIBRATION

Signal : TIC

peak #	R.T. min	first scan	max scan	last scan	PK TY	peak height	corr. area	corr. % max.	% of total
1	2.765	10	13	17	rVB2	14810	16382	1.38%	0.136%
2	6.695	677	682	690	rVB	88312	133052	11.18%	1.106%
3	6.854	704	709	717	rVB	69415	106910	8.99%	0.889%
4	7.048	736	742	750	rVB	91510	145400	12.22%	1.209%
5	7.512	815	821	828	rVB	163819	250387	21.05%	2.082%
6	8.223	937	942	949	rBV	83877	130575	10.98%	1.086%
7	8.335	956	961	968	rVB	19648	33664	2.83%	0.280%
8	8.664	1012	1017	1026	rVB	91017	146825	12.34%	1.221%
9	9.381	1134	1139	1147	rVB	76162	125123	10.52%	1.040%
10	9.921	1224	1231	1238	rVB	121370	195626	16.44%	1.627%
11	10.291	1286	1294	1301	rBV	262449	417593	35.10%	3.473%
12	10.438	1311	1319	1327	rBV	107405	180454	15.17%	1.501%
13	12.524	1669	1674	1679	rVB2	6040	8661	0.73%	0.072%
14	12.777	1713	1717	1723	rBV3	9261	14368	1.21%	0.119%
15	13.599	1851	1857	1861	rBV	242723	340833	28.65%	2.834%
16	13.646	1861	1865	1870	rVB	64442	79824	6.71%	0.664%
17	13.864	1896	1902	1914	rVB	274077	409667	34.44%	3.407%
18	14.181	1949	1956	1963	rVV2	425367	638169	53.64%	5.307%
19	14.240	1963	1966	1972	rVB	10854	14371	1.21%	0.120%
20	14.392	1986	1992	2000	rBV	97128	148377	12.47%	1.234%
21	14.580	2020	2024	2028	rVV2	6978	8594	0.72%	0.071%
22	15.062	2102	2106	2109	rVB3	7028	8842	0.74%	0.074%
23	15.180	2119	2126	2132	rBV	375352	528362	44.41%	4.394%
24	15.233	2132	2135	2139	rVB2	9638	12336	1.04%	0.103%
25	15.303	2141	2147	2153	rBV	85635	117702	9.89%	0.979%
26	15.679	2207	2211	2219	rVB5	3721	7871	0.66%	0.065%
27	15.920	2248	2252	2255	rBV2	12170	15923	1.34%	0.132%
28	16.484	2343	2348	2353	rVV2	8693	14556	1.22%	0.121%
29	16.590	2362	2366	2372	rVB	7285	8499	0.71%	0.071%
30	16.719	2384	2388	2390	rBV3	9883	10998	0.92%	0.091%
31	16.748	2390	2393	2401	rVB3	9236	14461	1.22%	0.120%
32	16.931	2416	2424	2429	rBV2	583805	836916	70.35%	6.959%
33	16.972	2429	2431	2436	rVB	123387	150204	12.63%	1.249%
34	17.030	2436	2441	2446	rBV2	398390	570934	47.99%	4.748%

Data Path : Z:\HPCHEM1\BNA_G\DATA\BG072315\
 Data File : BG018077.D
 Acq On : 23 Jul 2015 22:38
 Operator : TP/UM
 Sample : G3035-05
 Misc :
 ALS Vial : 18 Sample Multiplier: 1

Instrument :
 BNA_G
 ClientSampleId :
 C01K1

Integration Parameters: LSCINT.P

Integrator: RTE
 Smoothing : OFF
 Sampling : 1
 Start Thrs: 0.2
 Stop Thrs : 0

Filtering: 5
 Min Area: 0.1 % of largest Peak
 Max Peaks: 100
 Peak Location: TOP

If leading or trailing edge < 100 prefer < Baseline drop else tangent >
 Peak separation: 5

Method : Z:\HPCHEM1\BNA_G\METHODS\SOM02.2-EPA-BG072315.M
 Title : SVOA CALIBRATION

35	17.242	2474	2477	2483	rVB3	4185	7468	0.63%	0.062%
36	17.312	2483	2489	2490	rBV3	4353	6971	0.59%	0.058%
37	17.342	2490	2494	2498	rVB	12360	16222	1.36%	0.135%
38	17.453	2507	2513	2519	rVV5	4842	8075	0.68%	0.067%
39	17.806	2568	2573	2578	rBV2	17550	28395	2.39%	0.236%
40	17.859	2578	2582	2586	rVV	35134	50374	4.23%	0.419%
41	17.918	2589	2592	2600	rVV2	14453	28215	2.37%	0.235%
42	18.006	2600	2607	2611	rVV2	31749	55624	4.68%	0.463%
43	18.041	2611	2613	2617	rVB2	13989	17112	1.44%	0.142%
44	18.317	2651	2660	2663	rBV	15094	25834	2.17%	0.215%
45	18.352	2663	2666	2673	rVB3	15147	24585	2.07%	0.204%
46	18.417	2673	2677	2684	rBV4	10420	18489	1.55%	0.154%
47	18.523	2691	2695	2700	rBV8	7203	13099	1.10%	0.109%
48	18.570	2700	2703	2707	rBV5	8070	10148	0.85%	0.084%
49	18.611	2707	2710	2712	rBV4	6069	7481	0.63%	0.062%
50	18.646	2714	2716	2721	rVB4	7293	10222	0.86%	0.085%
51	18.740	2728	2732	2736	rVB4	16901	26685	2.24%	0.222%
52	18.805	2736	2743	2745	rBV7	10387	19108	1.61%	0.159%
53	18.875	2751	2755	2758	rBV5	21053	28399	2.39%	0.236%
54	19.005	2772	2777	2782	rVB	221065	297406	25.00%	2.473%
55	19.069	2784	2788	2792	rBV7	7517	11443	0.96%	0.095%
56	19.157	2799	2803	2806	rVB6	12731	17309	1.45%	0.144%
57	19.222	2806	2814	2817	rBV7	10090	21121	1.78%	0.176%
58	19.339	2828	2834	2837	rBV	527877	752354	63.24%	6.256%
59	19.369	2837	2839	2844	rVB	209473	224975	18.91%	1.871%
60	19.439	2849	2851	2857	rVV5	15246	25836	2.17%	0.215%
61	19.516	2859	2864	2867	rVV7	9370	19310	1.62%	0.161%
62	19.551	2867	2870	2874	rVV	14390	20938	1.76%	0.174%
63	19.610	2876	2880	2885	rVB4	21133	29988	2.52%	0.249%
64	19.692	2890	2894	2901	rBV5	16834	36196	3.04%	0.301%
65	19.833	2914	2918	2920	rVV4	14035	22340	1.88%	0.186%
66	19.868	2920	2924	2928	rVB3	38730	52954	4.45%	0.440%
67	19.915	2929	2932	2937	rVB7	8795	8874	0.75%	0.074%
68	19.968	2937	2941	2945	rBV2	21610	28323	2.38%	0.236%
69	20.027	2945	2951	2954	rVV2	27311	43128	3.63%	0.359%
70	20.068	2954	2958	2962	rVV6	10180	13237	1.11%	0.110%
71	20.103	2962	2964	2968	rVV4	8354	9742	0.82%	0.081%

Data Path : Z:\HPCHEM1\BNA_G\DATA\BG072315\
 Data File : BG018077.D
 Acq On : 23 Jul 2015 22:38
 Operator : TP/UM
 Sample : G3035-05
 Misc :
 ALS Vial : 18 Sample Multiplier: 1

Instrument :
 BNA_G
 ClientSampleId :
 C01K1

Integration Parameters: LSCINT.P

Integrator: RTE
 Smoothing : OFF
 Sampling : 1
 Start Thrs: 0.2
 Stop Thrs : 0

Filtering: 5
 Min Area: 0.1 % of largest Peak
 Max Peaks: 100
 Peak Location: TOP

If leading or trailing edge < 100 prefer < Baseline drop else tangent >
 Peak separation: 5

Method : Z:\HPCHEM1\BNA_G\METHODS\SOM02.2-EPA-BG072315.M
 Title : SVOA CALIBRATION

72	20.162	2969	2974	2978	rVV2	19585	32918	2.77%	0.274%
73	20.209	2978	2982	2989	rVB3	17578	32304	2.72%	0.269%
74	20.362	3006	3008	3012	rVB4	6427	7484	0.63%	0.062%
75	20.468	3020	3026	3029	rBV7	11960	18681	1.57%	0.155%
76	20.614	3047	3051	3059	rVB	31991	46569	3.91%	0.387%
77	20.714	3064	3068	3072	rVB4	19512	25599	2.15%	0.213%
78	20.785	3074	3080	3083	rVV3	23235	41292	3.47%	0.343%
79	20.820	3083	3086	3089	rVV	21351	25282	2.13%	0.210%
80	20.867	3090	3094	3098	rVV3	31032	57310	4.82%	0.477%
81	20.914	3098	3102	3109	rVB3	26472	57009	4.79%	0.474%
82	21.073	3126	3129	3131	rBV	12921	16522	1.39%	0.137%
83	21.137	3133	3140	3144	rVV2	828434	1189648	100.00%	9.893%
84	21.173	3144	3146	3155	rVB	137232	159274	13.39%	1.324%
85	21.290	3163	3166	3172	rBV3	16249	28524	2.40%	0.237%
86	21.455	3188	3194	3196	rBV3	25347	48962	4.12%	0.407%
87	21.725	3238	3240	3245	rVB3	27239	37014	3.11%	0.308%
88	21.790	3248	3251	3255	rBV5	14431	25015	2.10%	0.208%
89	21.866	3261	3264	3265	rBV3	11659	13375	1.12%	0.111%
90	22.665	3394	3400	3405	rBV3	100617	225847	18.98%	1.878%
91	22.829	3424	3428	3437	rVB2	22818	39154	3.29%	0.326%
92	23.129	3474	3479	3483	rBV	57779	113758	9.56%	0.946%
93	23.182	3483	3488	3493	rVV2	308671	573854	48.24%	4.772%
94	23.223	3493	3495	3503	rVB	91420	146455	12.31%	1.218%
95	23.323	3505	3512	3518	rBV2	521055	945129	79.45%	7.859%
96	24.163	3650	3655	3660	rBV8	15284	36841	3.10%	0.306%
97	24.563	3721	3723	3725	rBV3	6648	7042	0.59%	0.059%
98	25.520	3880	3886	3897	rVB2	43826	116345	9.78%	0.967%
99	25.861	3942	3944	3946	rBV3	7606	8380	0.70%	0.070%
100	26.196	3994	4001	4011	rVB3	21853	69553	5.85%	0.578%

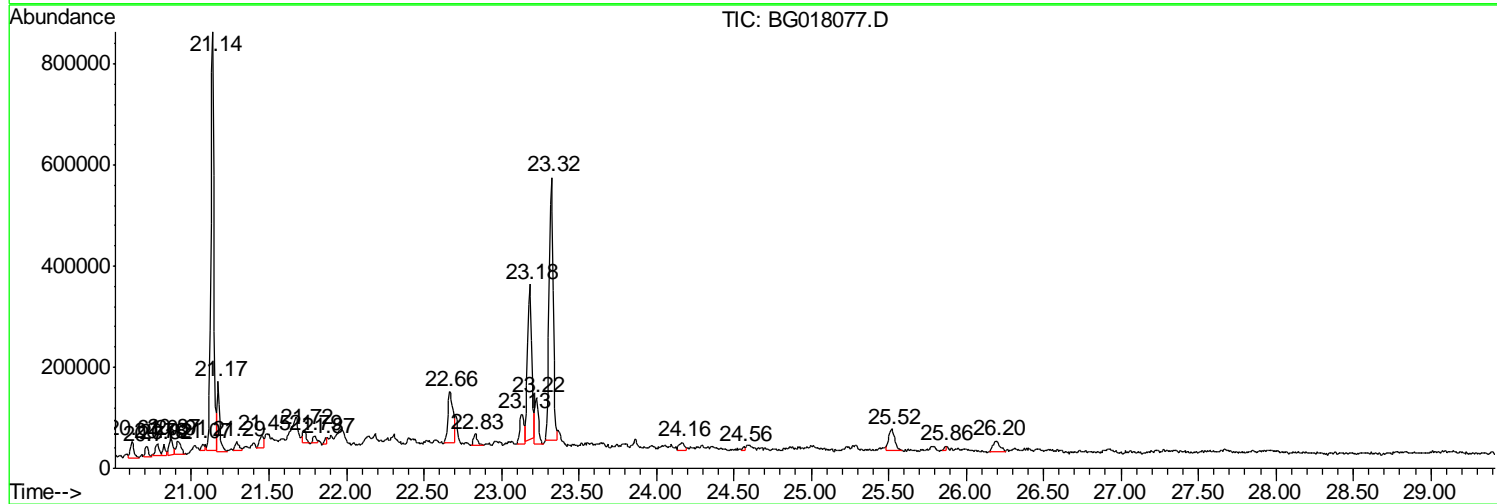
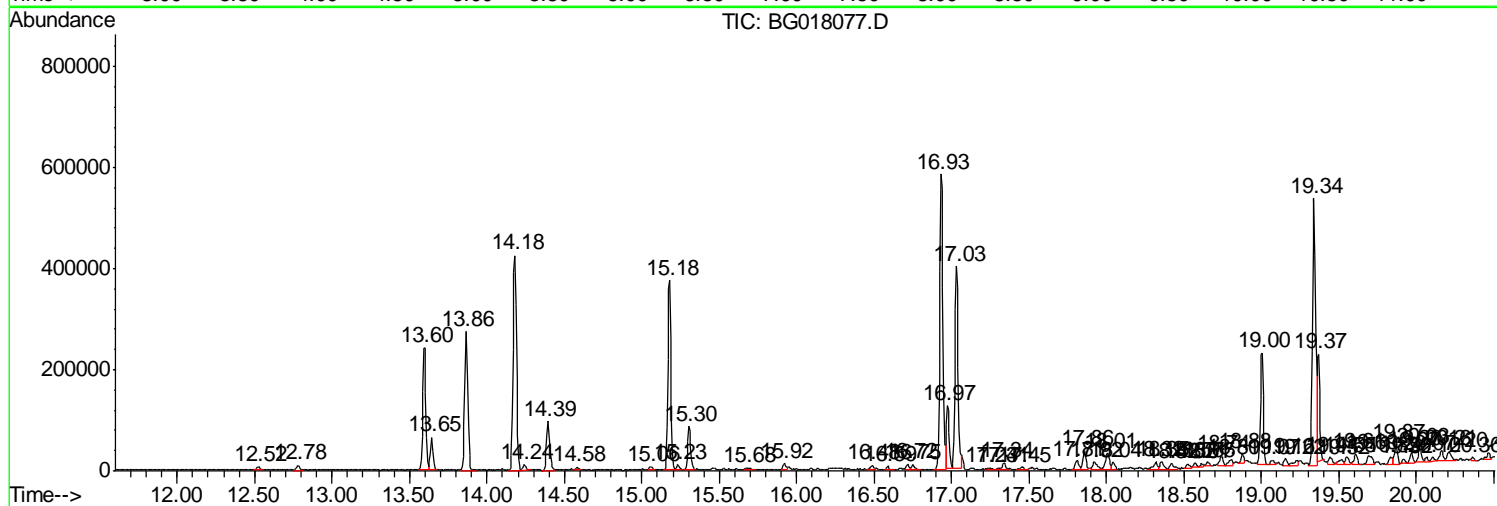
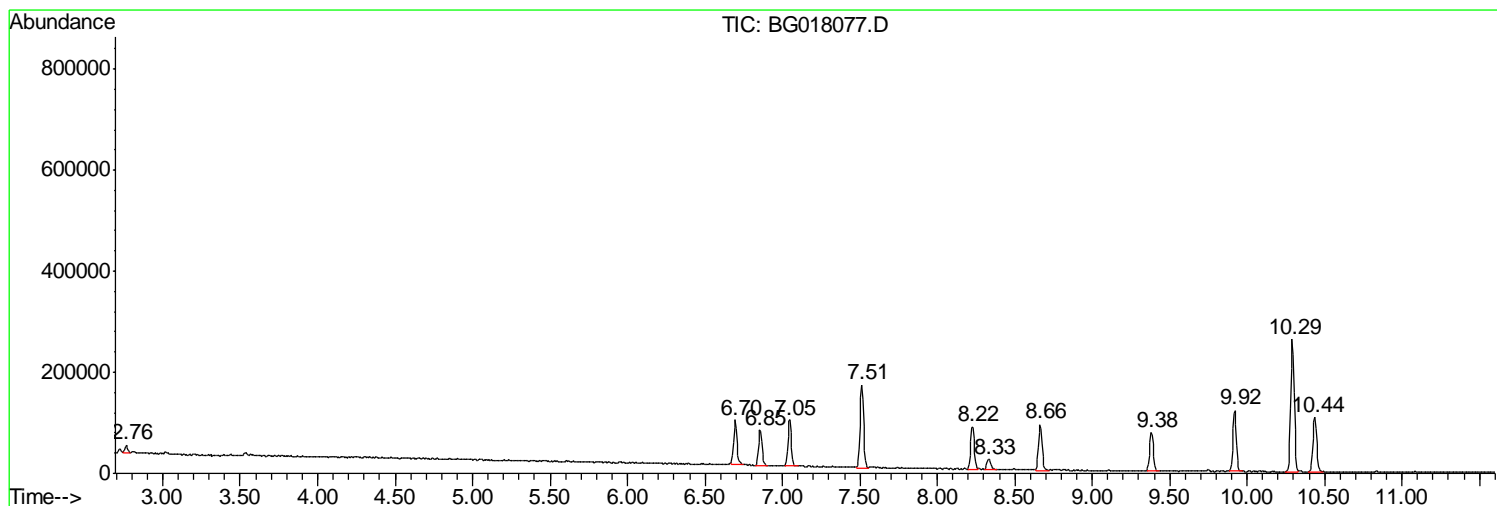
Sum of corrected areas: 12025579

Data Path : Z:\HPCHEM1\BNA_G\DATA\BG072315\
 Data File : BG018077.D
 Acq On : 23 Jul 2015 22:38
 Operator : TP/UM
 Sample : G3035-05
 Misc :
 ALS Vial : 18 Sample Multiplier: 1

Instrument :
 BNA_G
 ClientSampleId :
 C01K1

Quant Method : Z:\HPCHEM1\BNA_G\METHODS\SOM02.2-EPA-BG072315.M
 Quant Title : SVOA CALIBRATION

TIC Library : C:\DATABASE\NIST02.L
 TIC Integration Parameters: LSCINT.P



Data Path : Z:\HPCHEM1\BNA_G\DATA\BG072315\
Data File : BG018077.D
Acq On : 23 Jul 2015 22:38
Operator : TP/UM
Sample : G3035-05
Misc :
ALS Vial : 18 Sample Multiplier: 1

Instrument :
BNA_G
ClientSampleId :
C01K1

Quant Method : Z:\HPCHEM1\BNA_G\METHODS\SOM02.2-EPA-BG072315.M
Quant Title : SVOA CALIBRATION

TIC Library : C:\DATABASE\NIST02.L
TIC Integration Parameters: LSCINT.P

No Library Search Compounds Detected

Data Path : Z:\HPCHEM1\BNA_G\DATA\BG072315\
Data File : BG018077.D
Acq On : 23 Jul 2015 22:38
Operator : TP/UM
Sample : G3035-05
Misc :
ALS Vial : 18 Sample Multiplier: 1

Instrument :
BNA_G
ClientSampleId :
C01K1

Quant Method : Z:\HPCHEM1\BNA_G\METHODS\SOM02.2-EPA-BG072315.M
Quant Title : SVOA CALIBRATION

TIC Library : C:\DATABASE\NIST02.L
TIC Integration Parameters: LSCINT.P

TIC Top Hit name	RT	EstConc	Units	Response	--Internal Standard--			
					#	RT	Resp	Conc
