

Data Path : Z:\svoasrv\HPCHEM1\BNA_G\Data\BG072621\
 Data File : BG049504.D
 Acq On : 27 Jul 2021 12:25
 Operator : CG/JU
 Sample : M3084-03
 Misc :
 ALS Vial : 34 Sample Multiplier: 1

Instrument :
 BNA_G
 ClientSampled :
 C0023

Integration Parameters: LSCINT.P
 Integrator: RTE
 Smoothing : OFF Filtering: 5
 Sampling : 1 Min Area: 0.1 % of largest Peak
 Start Thrs: 0.2 Max Peaks: 100
 Stop Thrs : 0 Peak Location: TOP

If leading or trailing edge < 100 prefer < Baseline drop else tangent >
 Peak separation: 5

Method : Z:\SVOASRV\HPCHEM1\BNA_G\METHODS\SFAM-EPA-BG072421.M
 Title : SVOA CALIBRATION

Signal : TIC: BG049504.D\data.ms

peak #	R.T. min	first scan	max scan	last scan	PK TY	peak height	corr. area	corr. % max.	% of total
1	3.082	3	7	15	rBV2	54707	112384	22.57%	2.319%
2	3.158	16	20	27	rVB	117550	181763	36.51%	3.751%
3	3.869	137	141	152	rBV2	18079	34079	6.85%	0.703%
4	5.666	444	447	449	rBV2	1593	1245	0.25%	0.026%
5	5.807	466	471	473	rBV2	1026	1530	0.31%	0.032%
6	6.042	508	511	515	rVB3	1938	2371	0.48%	0.049%
7	6.078	515	517	522	rBV2	1310	1827	0.37%	0.038%
8	6.313	555	557	562	rBV	1117	1692	0.34%	0.035%
9	7.206	703	709	717	rBV	53793	92933	18.67%	1.918%
10	7.370	732	737	742	rBV	33684	56236	11.30%	1.161%
11	7.582	765	773	782	rVB	49969	91670	18.41%	1.892%
12	7.646	782	784	785	rBV	1399	1281	0.26%	0.026%
13	7.693	791	792	796	rVB	2003	1503	0.30%	0.031%
14	8.051	846	853	862	rVB	87660	153621	30.86%	3.171%
15	8.298	892	895	898	rVB	1144	1337	0.27%	0.028%
16	8.333	898	901	904	rVB	980	1363	0.27%	0.028%
17	8.756	966	973	979	rBV2	59263	100886	20.27%	2.082%
18	8.892	994	996	998	rVB2	1705	1121	0.23%	0.023%
19	9.215	1045	1051	1059	rVB	54358	100554	20.20%	2.075%
20	9.273	1059	1061	1062	rBV	1468	1173	0.24%	0.024%
21	9.379	1074	1079	1080	rVB	1128	1252	0.25%	0.026%
22	9.461	1090	1093	1094	rBV	1406	1096	0.22%	0.023%
23	9.943	1169	1175	1185	rBV	47606	89675	18.01%	1.851%
24	10.489	1259	1268	1279	rBV	65054	122712	24.65%	2.533%
25	10.636	1288	1293	1299	rBV2	5556	11261	2.26%	0.232%
26	10.730	1306	1309	1313	rBV	1522	1970	0.40%	0.041%
27	10.871	1324	1333	1340	rBV	126005	227651	45.73%	4.698%
28	11.006	1349	1356	1364	rBV	58261	108840	21.86%	2.246%
29	11.265	1398	1400	1403	rBV	1574	1432	0.29%	0.030%
30	11.882	1502	1505	1509	rVB3	1790	1971	0.40%	0.041%
31	12.275	1569	1572	1577	rBV2	2623	4069	0.82%	0.084%
32	12.363	1586	1587	1593	rVB	1736	1489	0.30%	0.031%
33	12.451	1600	1602	1608	rVB2	2097	2254	0.45%	0.047%
34	12.528	1608	1615	1619	rBV2	3732	6659	1.34%	0.137%
35	12.745	1649	1652	1656	rVB3	3205	3930	0.79%	0.081%
36	13.515	1779	1783	1791	rBV5	2755	6100	1.23%	0.126%

Data Path : Z:\svoasrv\HPCHEM1\BNA_G\Data\BG072621\
 Data File : BG049504.D
 Acq On : 27 Jul 2021 12:25
 Operator : CG/JU
 Sample : M3084-03
 Misc :
 ALS Vial : 34 Sample Multiplier: 1

Instrument :
 BNA_G
 ClientSampleId :
 C0023

Integration Parameters: LSCINT.P

Integrator: RTE
 Smoothing : OFF Filtering: 5
 Sampling : 1 Min Area: 0.1 % of largest Peak
 Start Thrs: 0.2 Max Peaks: 100
 Stop Thrs : 0 Peak Location: TOP

If leading or trailing edge < 100 prefer < Baseline drop else tangent >
 Peak separation: 5

Method : Z:\SVOASRV\HPCHEM1\BNA_G\METHODS\SFAM-EPA-BG072421.M
 Title : SVOA CALIBRATION

37	13.568	1791	1792	1795	rVB5	1307	1227	0.25%	0.025%
38	13.861	1841	1842	1845	rBV2	1589	1729	0.35%	0.036%
39	13.967	1854	1860	1863	rBV2	1416	2361	0.47%	0.049%
40	14.020	1863	1869	1873	rVV3	2953	5379	1.08%	0.111%
41	14.096	1873	1882	1888	rVV	149186	214193	43.03%	4.421%
42	14.173	1891	1895	1898	rBV2	1833	2790	0.56%	0.058%
43	14.249	1906	1908	1912	rBV	1471	1889	0.38%	0.039%
44	14.390	1925	1932	1945	rBV	141222	239959	48.20%	4.952%
45	14.584	1961	1965	1969	rBV3	3407	5431	1.09%	0.112%
46	14.654	1974	1977	1978	rBV3	1131	1219	0.24%	0.025%
47	14.701	1978	1985	1991	rVB	205140	326015	65.49%	6.729%
48	14.895	2013	2018	2028	rBV3	44623	85760	17.23%	1.770%
49	15.101	2047	2053	2057	rBV3	3639	6184	1.24%	0.128%
50	15.171	2062	2065	2067	rBV2	1906	1627	0.33%	0.034%
51	15.259	2078	2080	2082	rBV2	1133	1105	0.22%	0.023%
52	15.318	2087	2090	2092	rVV	2463	2894	0.58%	0.060%
53	15.371	2094	2099	2102	rVB2	2028	3620	0.73%	0.075%
54	15.477	2115	2117	2121	rBV2	2577	3215	0.65%	0.066%
55	15.535	2124	2127	2130	rVV2	4355	4519	0.91%	0.093%
56	15.588	2134	2136	2140	rBV	1395	1618	0.33%	0.033%
57	15.624	2140	2142	2144	rVB	1854	1286	0.26%	0.027%
58	15.688	2146	2153	2159	rBV	199842	312889	62.85%	6.458%
59	15.806	2166	2173	2180	rBV2	44531	69775	14.02%	1.440%
60	15.941	2187	2196	2198	rBV3	2944	6208	1.25%	0.128%
61	15.970	2200	2201	2203	rVB3	1853	1081	0.22%	0.022%
62	15.988	2203	2204	2207	rBV3	1107	1061	0.21%	0.022%
63	16.047	2207	2214	2216	rBV3	2282	4316	0.87%	0.089%
64	16.158	2230	2233	2235	rBV	898	1140	0.23%	0.024%
65	16.182	2235	2237	2238	rBV	1994	1168	0.23%	0.024%
66	16.393	2270	2273	2275	rBV	5753	7032	1.41%	0.145%
67	16.417	2275	2277	2284	rVB3	6756	8396	1.69%	0.173%
68	16.546	2297	2299	2302	rVB	1741	1153	0.23%	0.024%
69	16.628	2311	2313	2315	rBV	1762	1421	0.29%	0.029%
70	16.834	2345	2348	2350	rBV2	1714	1767	0.35%	0.036%
71	16.975	2369	2372	2377	rBV3	2825	3314	0.67%	0.068%
72	17.016	2377	2379	2382	rVB3	2712	2387	0.48%	0.049%
73	17.104	2390	2394	2396	rBV3	2877	4014	0.81%	0.083%
74	17.169	2403	2405	2406	rBV	2300	1437	0.29%	0.030%
75	17.192	2406	2409	2412	rVB3	5903	7315	1.47%	0.151%
76	17.333	2428	2433	2434	rBV2	1645	2038	0.41%	0.042%

Data Path : Z:\svoasrv\HPCHEM1\BNA_G\Data\BG072621\
 Data File : BG049504.D
 Acq On : 27 Jul 2021 12:25
 Operator : CG/JU
 Sample : M3084-03
 Misc :
 ALS Vial : 34 Sample Multiplier: 1

Instrument :
 BNA_G
 ClientSampleId :
 C0023

Integration Parameters: LSCINT.P

Integrator: RTE
 Smoothing : OFF Filtering: 5
 Sampling : 1 Min Area: 0.1 % of largest Peak
 Start Thrs: 0.2 Max Peaks: 100
 Stop Thrs : 0 Peak Location: TOP

If leading or trailing edge < 100 prefer < Baseline drop else tangent >
 Peak separation: 5

Method : Z:\SVOASRV\HPCHEM1\BNA_G\METHODS\SFAM-EPA-BG072421.M
 Title : SVOA CALIBRATION

77	17.445	2447	2452	2457	rBV	262111	399173	80.18%	8.238%
78	17.492	2457	2460	2464	rVV	27687	37754	7.58%	0.779%
79	17.545	2464	2469	2480	rVB	212759	341769	68.65%	7.054%
80	17.815	2512	2515	2517	rBV2	4887	6364	1.28%	0.131%
81	17.926	2531	2534	2538	rVB5	6722	8040	1.62%	0.166%
82	18.020	2549	2550	2551	rBV	2348	1577	0.32%	0.0333%
83	18.326	2598	2602	2608	rBV2	46953	71072	14.28%	1.467%
84	18.514	2630	2634	2638	rBV5	10876	16414	3.30%	0.339%
85	18.620	2648	2652	2656	rBV4	7672	10243	2.06%	0.211%
86	19.501	2797	2802	2807	rVB	92613	134036	26.92%	2.766%
87	19.595	2816	2818	2823	rVB3	15126	15246	3.06%	0.315%
88	19.830	2853	2858	2869	rVB2	268435	497832	100.00%	10.275%
89	21.727	3175	3181	3187	rBV2	231423	420882	84.54%	8.686%

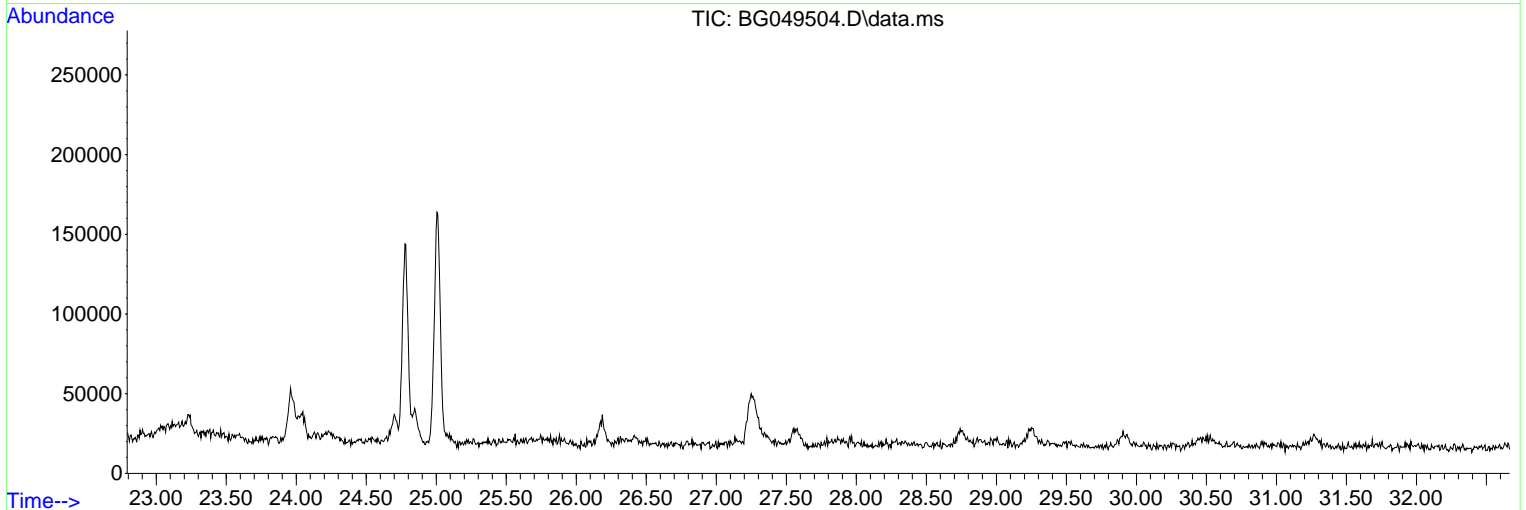
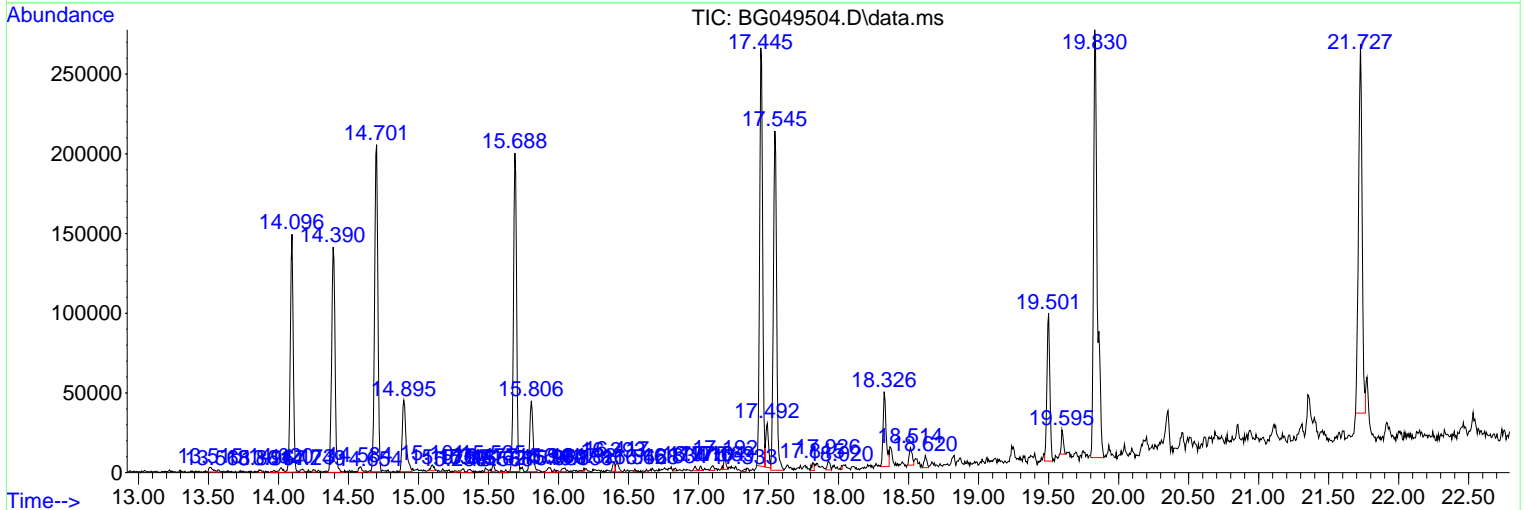
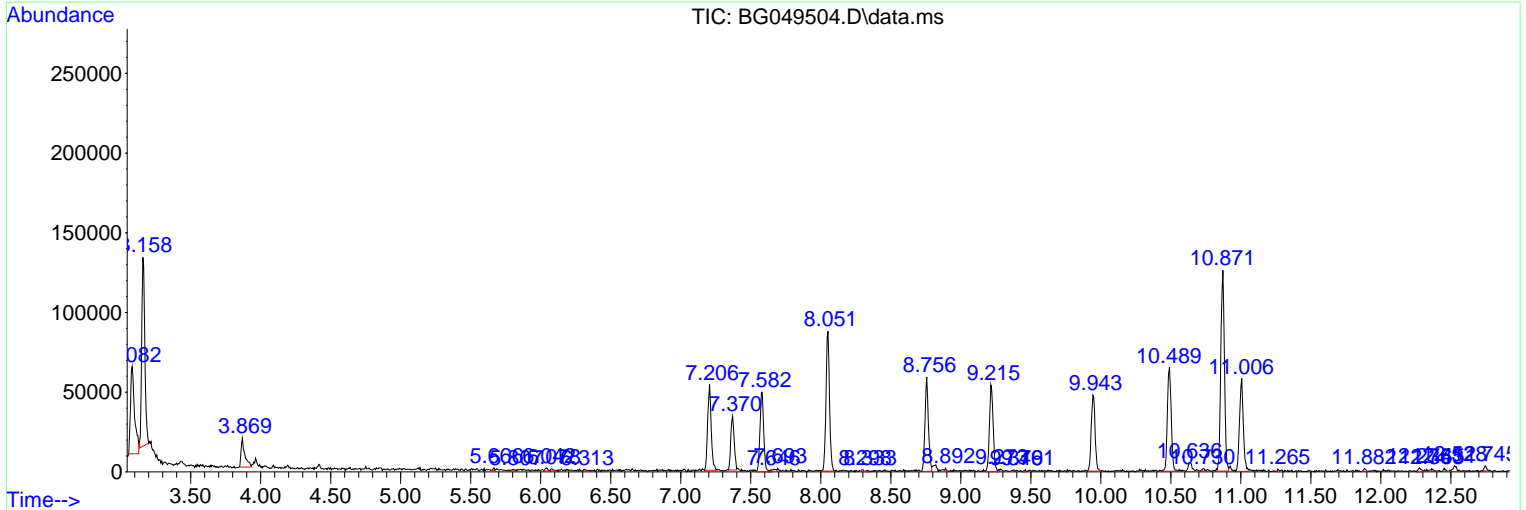
Sum of corrected areas: 4845264

Data Path : Z:\svoasrv\HPCHEM1\BNA_G\Data\BG072621\
 Data File : BG049504.D
 Acq On : 27 Jul 2021 12:25
 Operator : CG/JU
 Sample : M3084-03
 Misc :
 ALS Vial : 34 Sample Multiplier: 1

Instrument :
 BNA_G
ClientSampleId :
 C0023

Quant Method : Z:\SVOASRV\HPCHEM1\BNA_G\METHODS\SFAM-EPA-BG072421.M
 Quant Title : SVOA CALIBRATION

TIC Library : C:\DATABASE\NIST20.L
 TIC Integration Parameters: LSCINT.P



Data Path : Z:\svoasrv\HPCHEM1\BNA_G\Data\BG072621\
 Data File : BG049504.D
 Acq On : 27 Jul 2021 12:25
 Operator : CG/JU
 Sample : M3084-03
 Misc :
 ALS Vial : 34 Sample Multiplier: 1

Instrument :
 BNA_G
 ClientSampleId :
 C0023

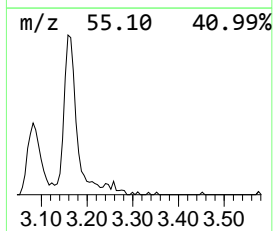
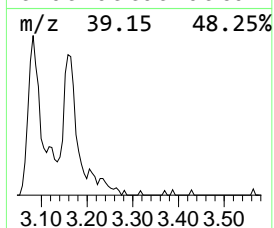
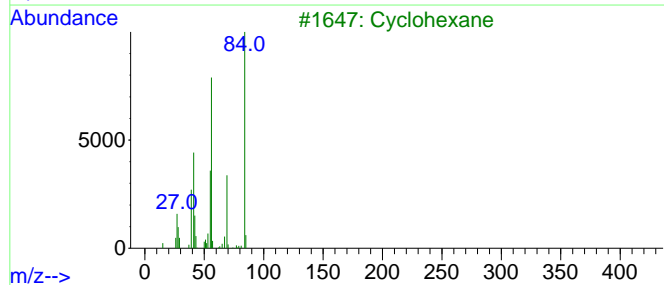
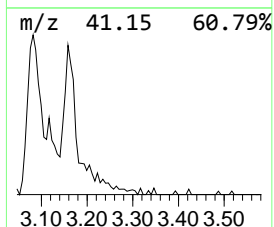
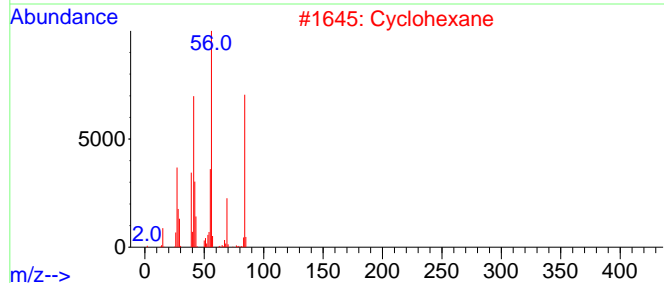
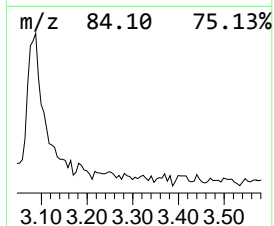
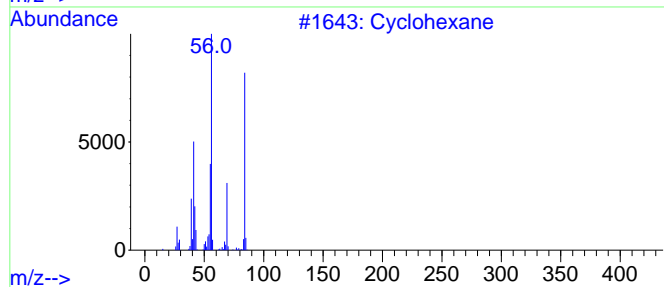
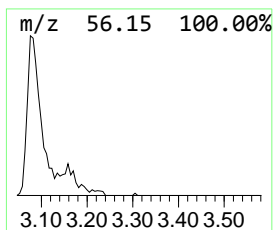
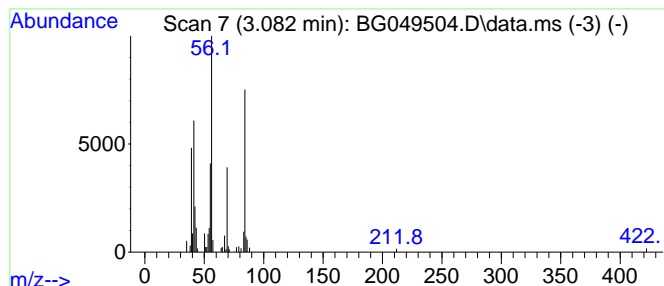
Quant Method : Z:\SVOASRV\HPCHEM1\BNA_G\METHODS\SFAM-EPA-BG072421.M
 Quant Title : SVOA CALIBRATION

TIC Library : C:\DATABASE\NIST20.L
 TIC Integration Parameters: LSCINT.P

 Peak Number 1 (DEL) Alkane: Cyclic3.082 Concentration Rank 2

R.T.	EstConc	Area	Relative to ISTD	R.T.
3.082	14.63 ng/ul	112384	1,4-Dichlorobenzene-d4	8.051

Hit#	of	5	Tentative ID	MW	MolForm	CAS#	Qual
1			Cyclohexane	84	C6H12	000110-82-7	93
2			Cyclohexane	84	C6H12	000110-82-7	68
3			Cyclohexane	84	C6H12	000110-82-7	62
4			1-Pentene, 2-methyl-	84	C6H12	000763-29-1	62
5			Cyanic acid, 2-methylpropyl ester	99	C5H9NO	001768-25-8	53



Data Path : Z:\svoasrv\HPCHEM1\BNA_G\Data\BG072621\
 Data File : BG049504.D
 Acq On : 27 Jul 2021 12:25
 Operator : CG/JU
 Sample : M3084-03
 Misc :
 ALS Vial : 34 Sample Multiplier: 1

Instrument :
 BNA_G
 ClientSampleId :
 C0023

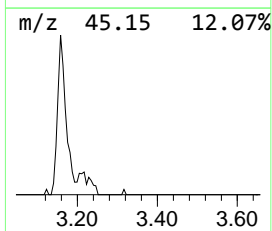
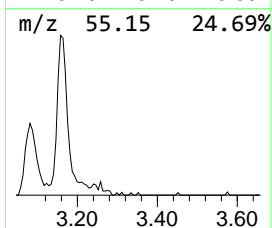
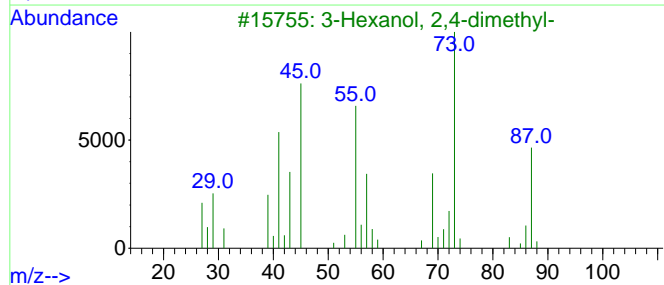
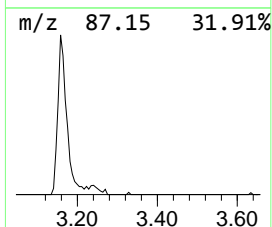
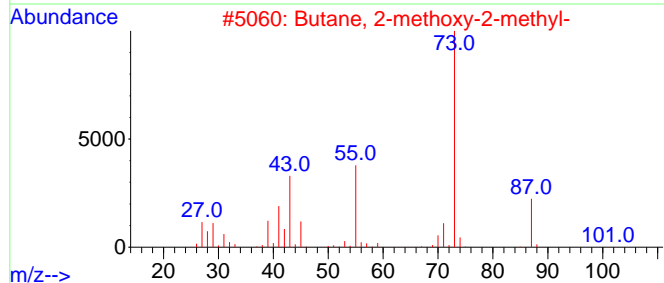
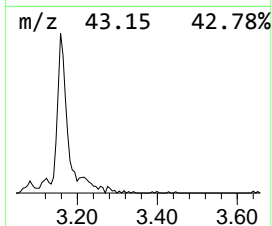
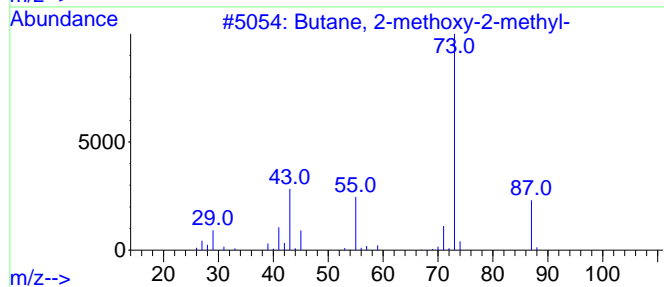
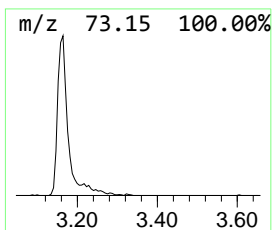
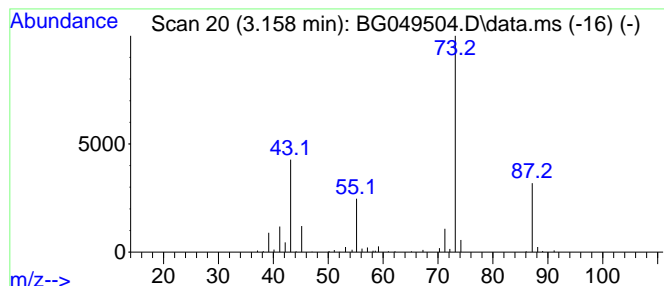
Quant Method : Z:\SVOASRV\HPCHEM1\BNA_G\METHODS\SFAM-EPA-BG072421.M
 Quant Title : SVOA CALIBRATION

TIC Library : C:\DATABASE\NIST20.L
 TIC Integration Parameters: LSCINT.P

 Peak Number 2 Butane, 2-methoxy-2-methyl- Concentration Rank 1

R.T.	EstConc	Area	Relative to ISTD	R.T.
3.158	23.66 ng/ul	181763	1,4-Dichlorobenzene-d4	8.051

Hit#	of	5	Tentative ID	MW	MolForm	CAS#	Qual
1			Butane, 2-methoxy-2-methyl-	102	C6H14O	000994-05-8	90
2			Butane, 2-methoxy-2-methyl-	102	C6H14O	000994-05-8	72
3			3-Hexanol, 2,4-dimethyl-	130	C8H18O	013432-25-2	59
4			2,2,4-Trimethyl-3-pentanol	130	C8H18O	005162-48-1	39
5			Silane, ethyltrimethyl-	102	C5H14Si	003439-38-1	33



Data Path : Z:\svoasrv\HPCHEM1\BNA_G\Data\BG072621\
 Data File : BG049504.D
 Acq On : 27 Jul 2021 12:25
 Operator : CG/JU
 Sample : M3084-03
 Misc :
 ALS Vial : 34 Sample Multiplier: 1

Instrument :
 BNA_G
 ClientSampled :
 C0023

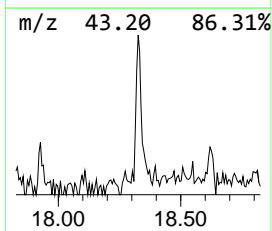
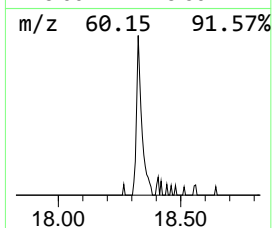
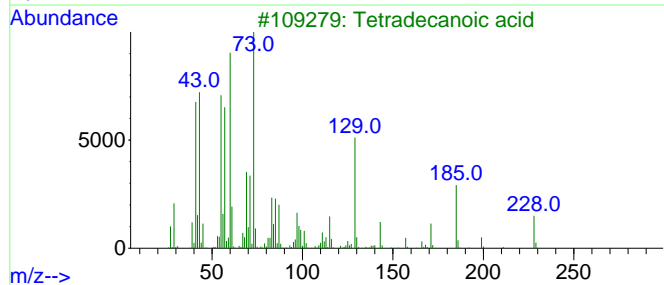
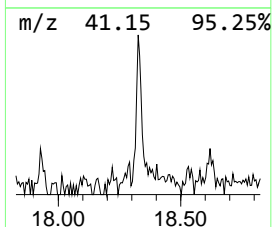
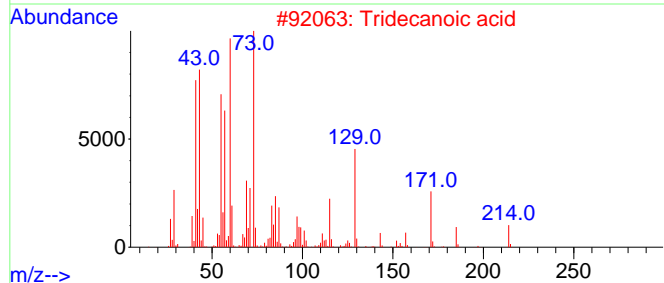
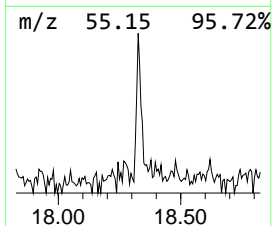
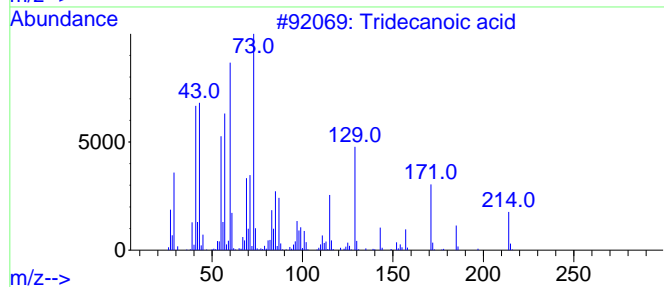
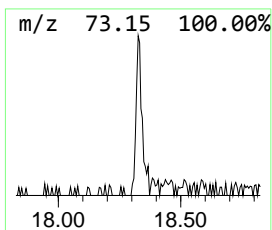
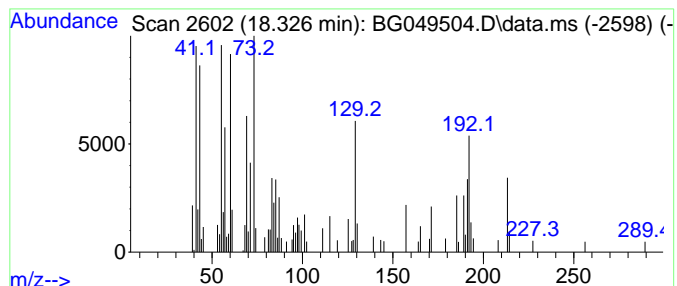
Quant Method : Z:\SVOASRV\HPCHEM1\BNA_G\METHODS\SFAM-EPA-BG072421.M
 Quant Title : SVOA CALIBRATION

TIC Library : C:\DATABASE\NIST20.L
 TIC Integration Parameters: LSCINT.P

 Peak Number 3 Tridecanoic acid Concentration Rank 3

R.T.	EstConc	Area	Relative to ISTD	R.T.
18.326	3.56 ng/ul	71072	Phenanthrene-d10	17.445

Hit#	of	Tentative ID	MW	MolForm	CAS#	Qual
1	5	Tridecanoic acid	214	C13H26O2	000638-53-9	70
2		Tridecanoic acid	214	C13H26O2	000638-53-9	46
3		Tetradecanoic acid	228	C14H28O2	000544-63-8	43
4		Tetradecanoic acid	228	C14H28O2	000544-63-8	38
5		Undecanoic acid	186	C11H22O2	000112-37-8	38



Data Path : Z:\svoasrv\HPCHEM1\BNA_G\Data\BG072621\
Data File : BG049504.D
Acq On : 27 Jul 2021 12:25
Operator : CG/JU
Sample : M3084-03
Misc :
ALS Vial : 34 Sample Multiplier: 1

Instrument :
BNA_G
ClientSampleId :
C0023

Quant Method : Z:\SVOASRV\HPCHEM1\BNA_G\METHODS\SFAM-EPA-BG072421.M
Quant Title : SVOA CALIBRATION

TIC Library : C:\DATABASE\NIST20.L
TIC Integration Parameters: LSCINT.P

TIC Top Hit name	RT	EstConc	Units	Response	--Internal Standard--			
					#	RT	Resp	Conc
(DEL) Alkane: C...	3.082	14.6	ng/ul	112384	1	8.051	153621	20.0
Butane, 2-metho...	3.158	23.7	ng/ul	181763	1	8.051	153621	20.0
Tridecanoic acid	18.326	3.6	ng/ul	71072	4	17.445	399173	20.0