

Data Path : Z:\HPCHEM1\BNA\_G\DATA\BG072715\  
 Data File : BG018136.D  
 Acq On : 28 Jul 2015 4:57  
 Operator : TP/UM  
 Sample : G3000-13  
 Misc :  
 ALS Vial : 27 Sample Multiplier: 1

Instrument :  
 BNA\_G  
 ClientSampleId :  
 C02B9

## Integration Parameters: LSCINT.P

Integrator: RTE  
 Smoothing : OFF Filtering: 5  
 Sampling : 1 Min Area: 0.1 % of largest Peak  
 Start Thrs: 0.2 Max Peaks: 100  
 Stop Thrs : 0 Peak Location: TOP

If leading or trailing edge < 100 prefer < Baseline drop else tangent >  
 Peak separation: 5

Method : Z:\HPCHEM1\BNA\_G\METHODS\SOM02.2-EPA-BG072315.M  
 Title : SVOA CALIBRATION

Signal : TIC

peak #	R.T. min	first scan	max scan	last scan	PK TY	peak height	corr. area	corr. % max.	% of total
1	4.645	331	333	337	rVB	4278	4722	0.66%	0.039%
2	6.690	676	681	690	rVB	97068	150650	20.99%	1.257%
3	6.849	703	708	714	rBV	75629	113189	15.77%	0.945%
4	7.043	735	741	748	rVB	105964	165603	23.07%	1.382%
5	7.507	814	820	826	rVB	138810	211454	29.46%	1.765%
6	8.224	936	942	952	rVB	137404	207545	28.92%	1.732%
7	8.588	1002	1004	1009	rVV3	1440	1947	0.27%	0.016%
8	8.658	1010	1016	1023	rVB	96054	151210	21.07%	1.262%
9	9.381	1133	1139	1149	rVB	80988	136687	19.05%	1.141%
10	9.916	1224	1230	1240	rVB	140004	227394	31.68%	1.898%
11	10.292	1287	1294	1299	rBV	203739	345611	48.16%	2.884%
12	10.339	1299	1302	1307	rVB2	9252	11722	1.63%	0.098%
13	10.433	1312	1318	1328	rBV	109651	178123	24.82%	1.486%
14	11.966	1575	1579	1584	rBV3	3788	5835	0.81%	0.049%
15	12.189	1613	1617	1623	rBV3	3700	6788	0.95%	0.057%
16	12.513	1667	1672	1677	rBV4	2714	4581	0.64%	0.038%
17	12.777	1713	1717	1721	rVB3	4771	6439	0.90%	0.054%
18	13.012	1752	1757	1760	rVB4	1502	2563	0.36%	0.021%
19	13.494	1832	1839	1844	rBV4	2614	4375	0.61%	0.037%
20	13.594	1850	1856	1861	rBV	254510	346415	48.27%	2.891%
21	13.641	1861	1864	1869	rVB	76147	94163	13.12%	0.786%
22	13.717	1874	1877	1878	rBV2	1993	1535	0.21%	0.013%
23	13.864	1895	1902	1908	rBV	285023	417409	58.16%	3.483%
24	14.005	1921	1926	1929	rVV4	1914	3488	0.49%	0.029%
25	14.093	1934	1941	1945	rBV4	4156	6472	0.90%	0.054%
26	14.181	1945	1956	1962	rVV2	322271	505233	70.40%	4.216%
27	14.240	1962	1966	1972	rVV2	23829	34341	4.78%	0.287%
28	14.305	1976	1977	1982	rBV4	1164	1763	0.25%	0.015%
29	14.399	1986	1993	2003	rBV	80413	122866	17.12%	1.025%
30	14.487	2006	2008	2011	rVV3	1844	2505	0.35%	0.021%
31	14.510	2011	2012	2015	rVV2	1655	1686	0.23%	0.014%
32	14.540	2015	2017	2021	rVV4	3972	6242	0.87%	0.052%
33	14.575	2021	2023	2027	rVV2	6611	9593	1.34%	0.080%
34	14.604	2027	2028	2032	rVV4	2376	2533	0.35%	0.021%

Data Path : Z:\HPCHEM1\BNA\_G\DATA\BG072715\  
 Data File : BG018136.D  
 Acq On : 28 Jul 2015 4:57  
 Operator : TP/UM  
 Sample : G3000-13  
 Misc :  
 ALS Vial : 27 Sample Multiplier: 1

Instrument :  
 BNA\_G  
 ClientSampleId :  
 C02B9

## Integration Parameters: LSCINT.P

Integrator: RTE  
 Smoothing : OFF  
 Sampling : 1  
 Start Thrs: 0.2  
 Stop Thrs : 0

Filtering: 5  
 Min Area: 0.1 % of largest Peak  
 Max Peaks: 100  
 Peak Location: TOP

If leading or trailing edge < 100 prefer < Baseline drop else tangent >  
 Peak separation: 5

Method : Z:\HPCHEM1\BNA\_G\METHODS\SOM02.2-EPA-BG072315.M  
 Title : SVOA CALIBRATION

35	14.657	2035	2037	2041	rVB4	2114	2113	0.29%	0.018%
36	14.722	2045	2048	2052	rVB4	2514	2859	0.40%	0.024%
37	14.810	2060	2063	2064	rVB2	1903	1586	0.22%	0.013%
38	14.828	2064	2066	2068	rBV3	1859	2030	0.28%	0.017%
39	14.998	2089	2095	2100	rVV2	7213	11051	1.54%	0.092%
40	15.057	2100	2105	2108	rVV3	9144	10335	1.44%	0.086%
41	15.180	2119	2126	2132	rVV	353900	501964	69.94%	4.189%
42	15.233	2132	2135	2139	rVV2	13775	17522	2.44%	0.146%
43	15.309	2143	2148	2153	rBV	64042	90213	12.57%	0.753%
44	15.462	2170	2174	2178	rVV4	5736	8787	1.22%	0.073%
45	15.556	2187	2190	2193	rVB5	1903	2922	0.41%	0.024%
46	15.615	2195	2200	2201	rBV3	2211	2977	0.41%	0.025%
47	15.674	2206	2210	2212	rBV4	2256	3039	0.42%	0.025%
48	15.744	2219	2222	2223	rBV3	1968	1664	0.23%	0.014%
49	15.868	2238	2243	2248	rBV	7425	11808	1.65%	0.099%
50	15.920	2248	2252	2255	rBV4	13583	19792	2.76%	0.165%
51	16.038	2270	2272	2277	rVB5	1587	2376	0.33%	0.020%
52	16.091	2277	2281	2285	rVB7	3628	5774	0.80%	0.048%
53	16.208	2298	2301	2303	rBV4	1871	1761	0.25%	0.015%
54	16.244	2303	2307	2309	rVV4	3226	3620	0.50%	0.030%
55	16.502	2348	2351	2356	rBV7	2636	5622	0.78%	0.047%
56	16.584	2362	2365	2368	rBV5	2835	3266	0.46%	0.027%
57	16.667	2377	2379	2382	rBV4	2585	3504	0.49%	0.029%
58	16.714	2383	2387	2392	rVV2	18183	24666	3.44%	0.206%
59	16.766	2392	2396	2402	rVB8	11007	20534	2.86%	0.171%
60	16.819	2402	2405	2407	rBV4	2014	2725	0.38%	0.023%
61	16.878	2413	2415	2418	rVB4	2649	2938	0.41%	0.025%
62	16.937	2418	2425	2429	rBV	415197	605842	84.41%	5.056%
63	16.972	2429	2431	2436	rVV	47351	57867	8.06%	0.483%
64	17.031	2436	2441	2450	rVB	381270	527539	73.50%	4.402%
65	17.113	2454	2455	2457	rBV	2885	2399	0.33%	0.020%
66	17.131	2457	2458	2460	rBV2	3024	1770	0.25%	0.015%
67	17.184	2465	2467	2470	rVB4	2529	2042	0.28%	0.017%
68	17.307	2486	2488	2490	rBV3	3565	4293	0.60%	0.036%
69	17.342	2490	2494	2499	rVV6	6473	11409	1.59%	0.095%
70	17.454	2509	2513	2517	rVV2	22479	25875	3.61%	0.216%
71	17.513	2519	2523	2524	rBV4	4300	4324	0.60%	0.036%

Data Path : Z:\HPCHEM1\BNA\_G\DATA\BG072715\  
 Data File : BG018136.D  
 Acq On : 28 Jul 2015 4:57  
 Operator : TP/UM  
 Sample : G3000-13  
 Misc :  
 ALS Vial : 27 Sample Multiplier: 1

Instrument :  
 BNA\_G  
 ClientSampleId :  
 C02B9

## Integration Parameters: LSCINT.P

Integrator: RTE  
 Smoothing : OFF  
 Sampling : 1  
 Start Thrs: 0.2  
 Stop Thrs : 0

Filtering: 5  
 Min Area: 0.1 % of largest Peak  
 Max Peaks: 100  
 Peak Location: TOP

If leading or trailing edge < 100 prefer < Baseline drop else tangent >  
 Peak separation: 5

Method : Z:\HPCHEM1\BNA\_G\METHODS\SOM02.2-EPA-BG072315.M  
 Title : SVOA CALIBRATION

72	17.660	2545	2548	2549	rBV2	3672	2922	0.41%	0.024%
73	17.677	2549	2551	2555	rVV5	2721	1951	0.27%	0.016%
74	17.742	2560	2562	2565	rVB4	2834	3380	0.47%	0.028%
75	17.859	2577	2582	2586	rBV3	31490	46954	6.54%	0.392%
76	17.918	2590	2592	2597	rVB	7677	11071	1.54%	0.092%
77	18.006	2603	2607	2612	rBV3	8068	11761	1.64%	0.098%
78	18.147	2627	2631	2636	rBV	35435	49129	6.85%	0.410%
79	18.370	2667	2669	2672	rVB4	5292	5943	0.83%	0.050%
80	18.412	2674	2676	2680	rVB5	7398	8883	1.24%	0.074%
81	18.794	2736	2741	2746	rBV	124777	154259	21.49%	1.287%
82	19.005	2773	2777	2783	rVB	48341	63493	8.85%	0.530%
83	19.070	2784	2788	2793	rVB	107652	131090	18.27%	1.094%
84	19.152	2800	2802	2808	rVB7	10211	15095	2.10%	0.126%
85	19.340	2829	2834	2838	rBV	403674	569725	79.38%	4.755%
86	19.375	2838	2840	2844	rVB2	280253	312080	43.48%	2.604%
87	19.916	2928	2932	2937	rVB	383928	402925	56.14%	3.363%
88	20.409	3012	3016	3021	rBV	382315	434269	60.51%	3.624%
89	20.879	3091	3096	3100	rBV	359837	442170	61.61%	3.690%
90	21.138	3135	3140	3145	rBV	533055	717700	100.00%	5.989%
91	21.314	3166	3170	3174	rVB	336659	363242	50.61%	3.031%
92	21.737	3238	3242	3249	rVB	263833	318035	44.31%	2.654%
93	22.184	3315	3318	3326	rVB	185166	256611	35.75%	2.142%
94	22.683	3399	3403	3408	rVB2	133811	191056	26.62%	1.594%
95	23.188	3484	3489	3494	rBV	249643	435594	60.69%	3.635%
96	23.241	3495	3498	3503	rVB3	125290	197001	27.45%	1.644%
97	23.329	3507	3513	3521	rVB	354980	681198	94.91%	5.685%
98	23.870	3602	3605	3611	rVB2	68910	112990	15.74%	0.943%
99	24.363	3685	3689	3701	rVB4	85133	213138	29.70%	1.779%
100	25.016	3794	3800	3810	rVB3	128443	325598	45.37%	2.717%

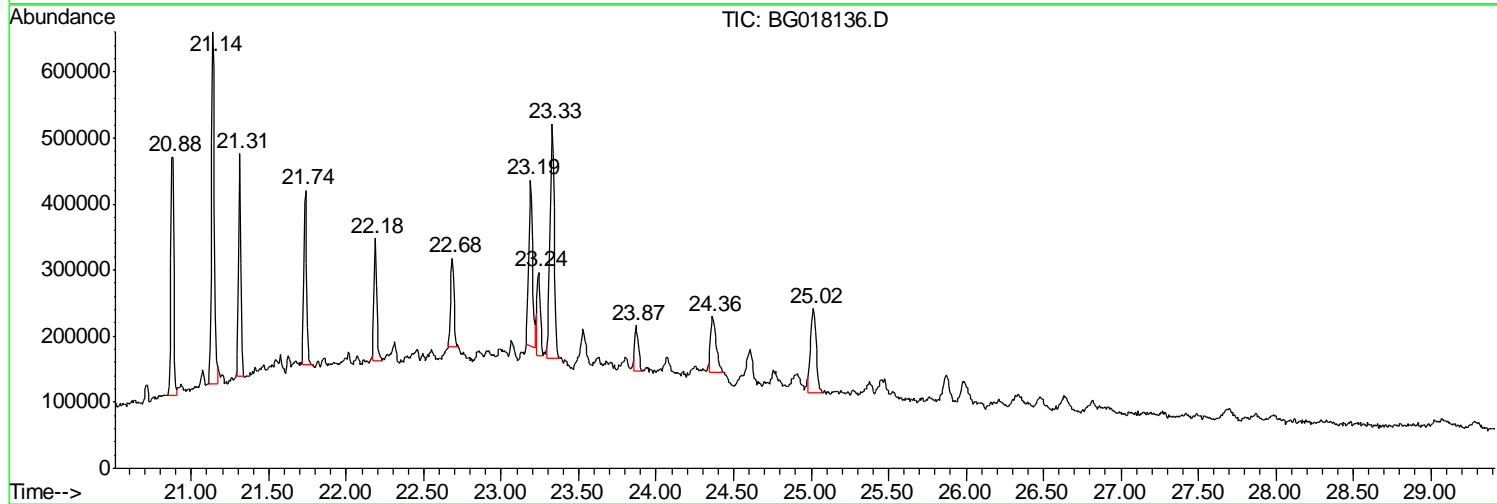
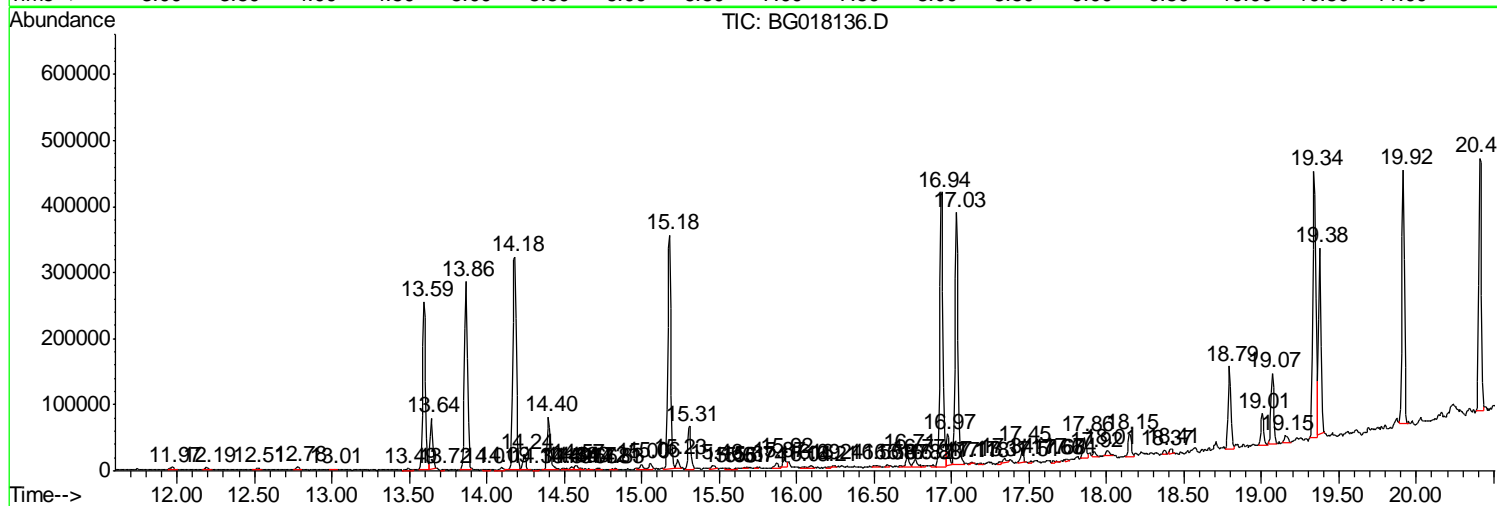
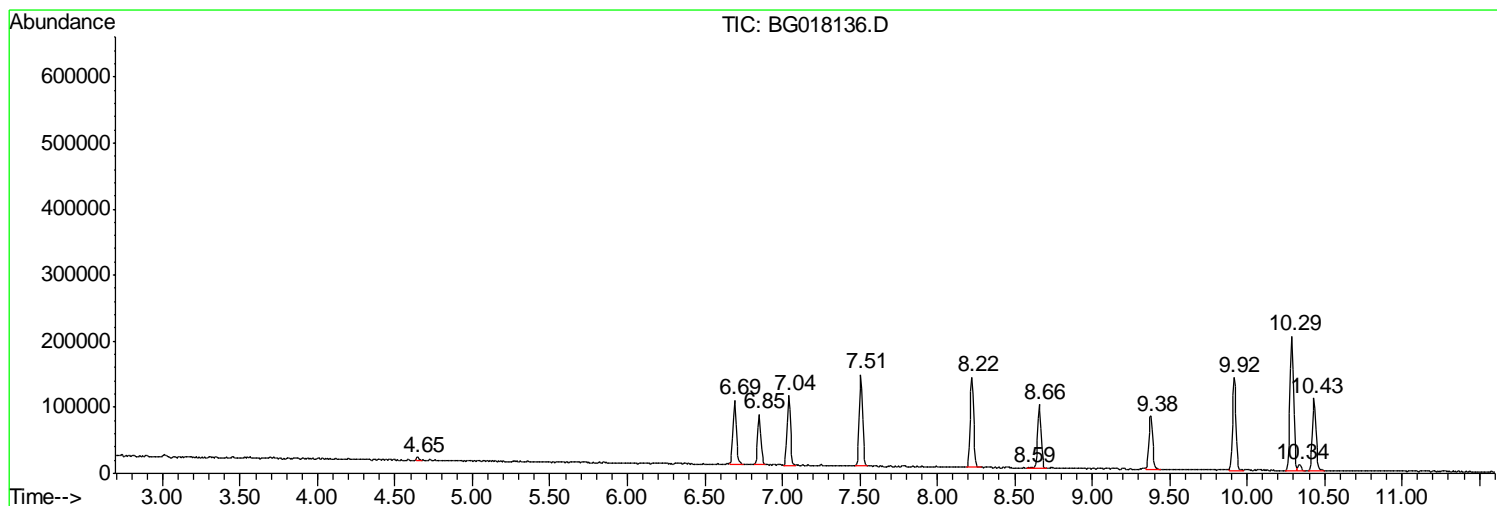
Sum of corrected areas: 11982753

Data Path : Z:\HPCHEM1\BNA\_G\DATA\BG072715\  
 Data File : BG018136.D  
 Acq On : 28 Jul 2015 4:57  
 Operator : TP/UM  
 Sample : G3000-13  
 Misc :  
 ALS Vial : 27 Sample Multiplier: 1

Instrument :  
 BNA\_G  
 ClientSampleId :  
 C02B9

Quant Method : Z:\HPCHEM1\BNA\_G\METHODS\SOM02.2-EPA-BG072315.M  
 Quant Title : SVOA CALIBRATION

TIC Library : C:\DATABASE\NIST02.L  
 TIC Integration Parameters: LSCINT.P



Data Path : Z:\HPCHEM1\BNA\_G\DATA\BG072715\  
 Data File : BG018136.D  
 Acq On : 28 Jul 2015 4:57  
 Operator : TP/UM  
 Sample : G3000-13  
 Misc :  
 ALS Vial : 27 Sample Multiplier: 1

Instrument :  
 BNA\_G  
 ClientSampleID :  
 C02B9

Quant Method : Z:\HPCHEM1\BNA\_G\METHODS\SOM02.2-EPA-BG072315.M  
 Quant Title : SVOA CALIBRATION

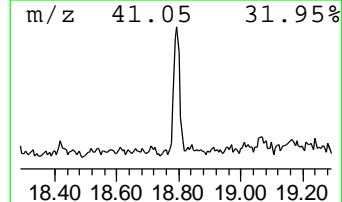
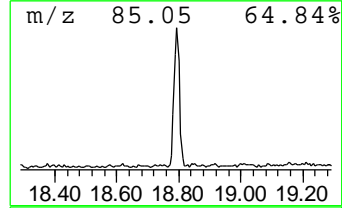
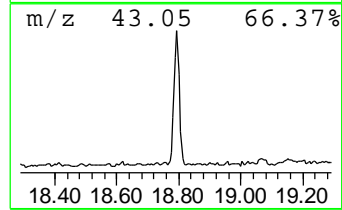
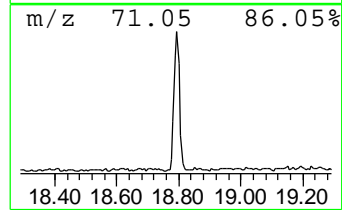
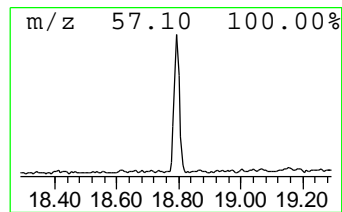
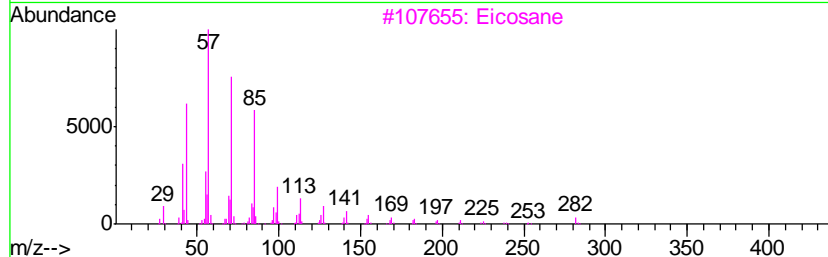
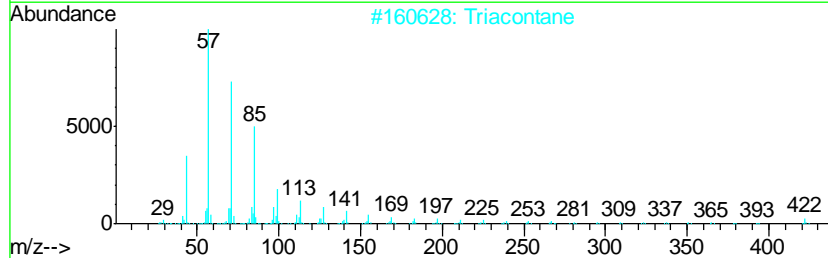
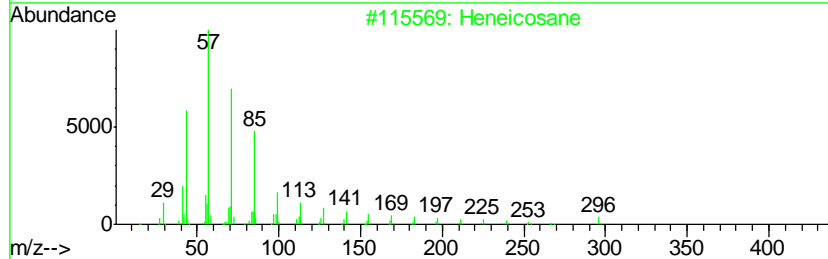
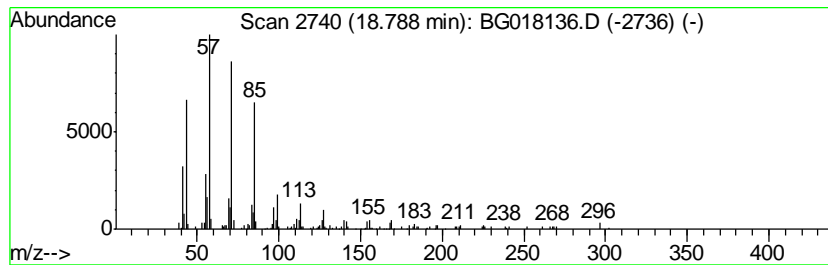
TIC Library : C:\DATABASE\NIST02.L  
 TIC Integration Parameters: LSCINT.P

\*\*\*\*\*  
 Peak Number 1 (DEL) Alkane: Straight-Chai... Concentration Rank 10

R.T.	EstConc	Area	Relative to ISTD	R.T.
18.79	5.09 ng/ul	154259	Phenanthrene-d10	16.94

Hit#	of	Tentative ID	MW	MolForm	CAS#	Qual
1	5	Heneicosane	296	C21H44	000629-94-7	95
2		Triacontane	422	C30H62	000638-68-6	91
3		Eicosane	282	C20H42	000112-95-8	91
4		Nonacosane	408	C29H60	000630-03-5	91
5		Heptadecane, 2,6,10,15-tetramethyl-	296	C21H44	054833-48-6	91



Data Path : Z:\HPCHEM1\BNA\_G\DATA\BG072715\  
 Data File : BG018136.D  
 Acq On : 28 Jul 2015 4:57  
 Operator : TP/UM  
 Sample : G3000-13  
 Misc :  
 ALS Vial : 27 Sample Multiplier: 1

Instrument :  
 BNA\_G  
 ClientSampled :  
 C02B9

Quant Method : Z:\HPCHEM1\BNA\_G\METHODS\SOM02.2-EPA-BG072315.M  
 Quant Title : SVOA CALIBRATION

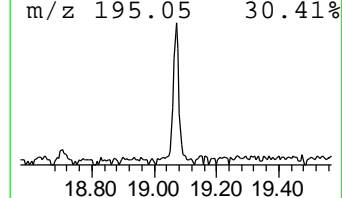
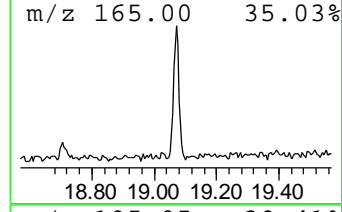
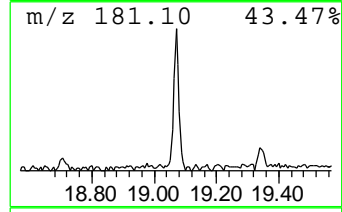
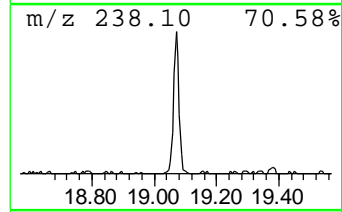
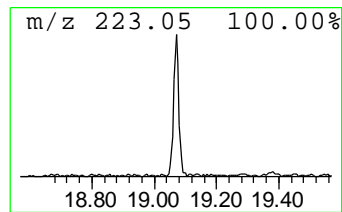
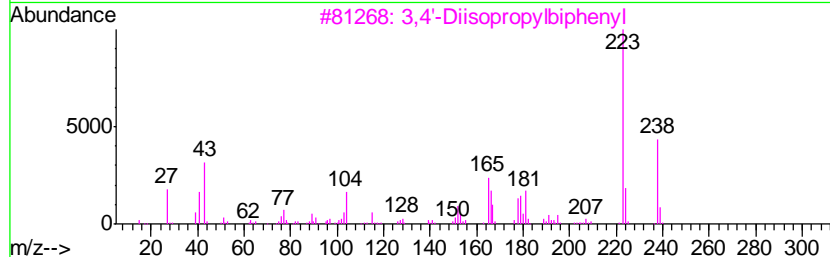
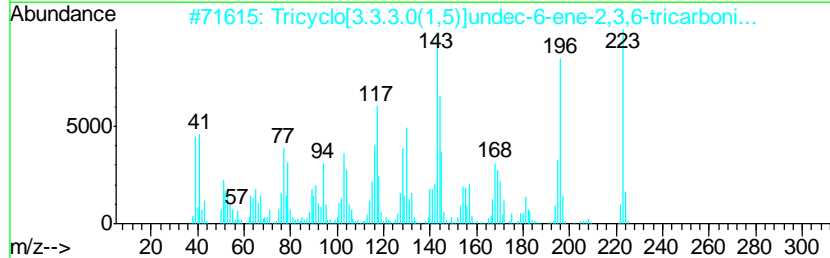
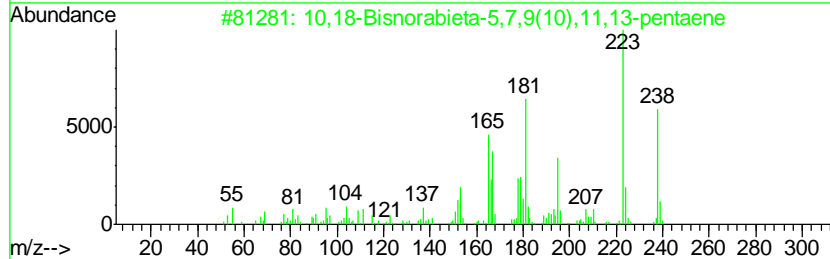
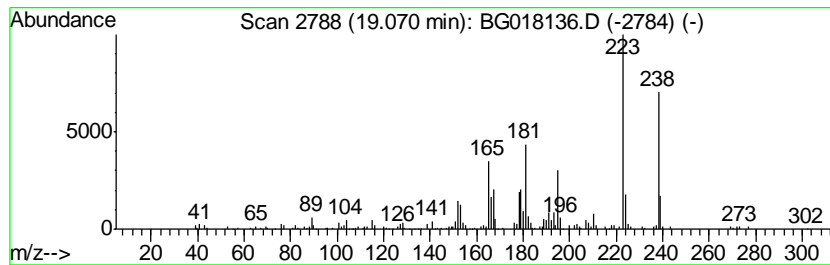
TIC Library : C:\DATABASE\NIST02.L  
 TIC Integration Parameters: LSCINT.P

\*\*\*\*\*  
 Peak Number 2 10,18-Bisnorabieta-5,7,9(10... Concentration Rank 11

R.T.	EstConc	Area	Relative to ISTD	R.T.
19.07	3.65 ng/ul	131090	Chrysene-d12	21.14

Hit#	of	Tentative ID	MW	MolForm	CAS#	Qual
1	5	10,18-Bisnorabieta-5,7,9(10),11,...	238	C18H22	006566-19-4	93
2		Tricyclo[3.3.3.0(1,5)]undec-6-en...	223	C14H13N3	118894-71-6	64
3		3,4'-Diisopropylbiphenyl	238	C18H22	061434-46-6	64
4		4,4'-Diisopropylbiphenyl	238	C18H22	018970-30-4	60
5		Anthracene, 1,4-dimethoxy-	238	C16H14O2	013076-29-4	49



Data Path : Z:\HPCHEM1\BNA\_G\DATA\BG072715\  
 Data File : BG018136.D  
 Acq On : 28 Jul 2015 4:57  
 Operator : TP/UM  
 Sample : G3000-13  
 Misc :  
 ALS Vial : 27 Sample Multiplier: 1

Instrument :  
 BNA\_G  
 ClientSampleID :  
 C02B9

Quant Method : Z:\HPCHEM1\BNA\_G\METHODS\SOM02.2-EPA-BG072315.M  
 Quant Title : SVOA CALIBRATION

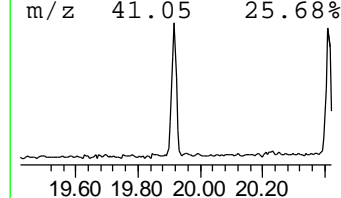
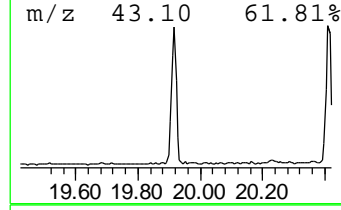
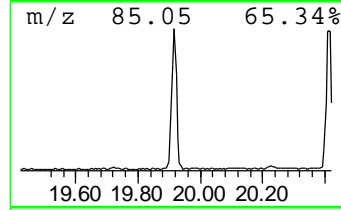
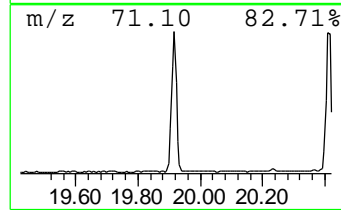
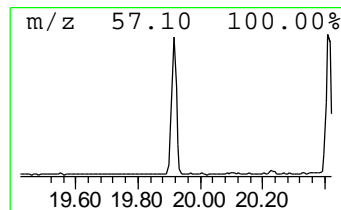
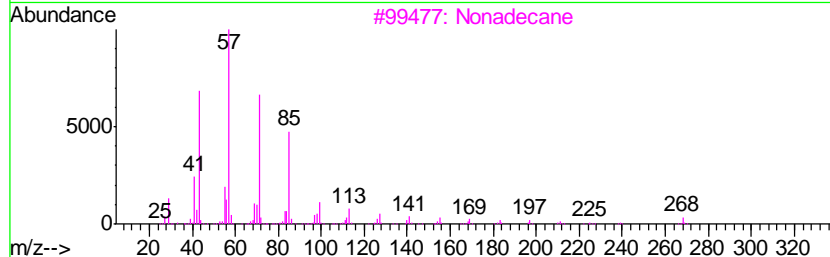
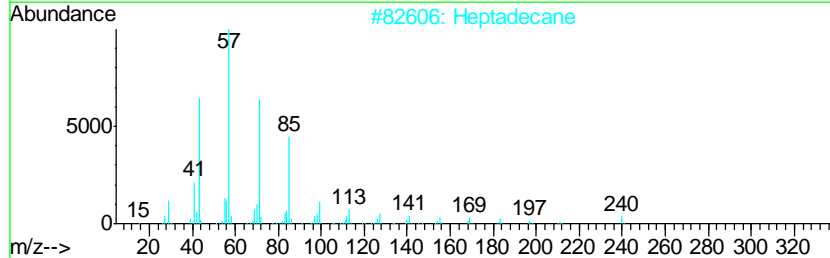
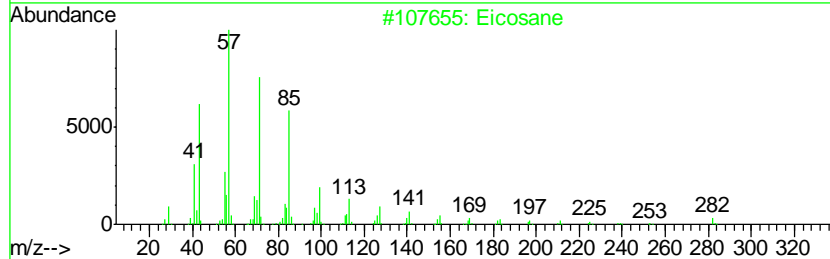
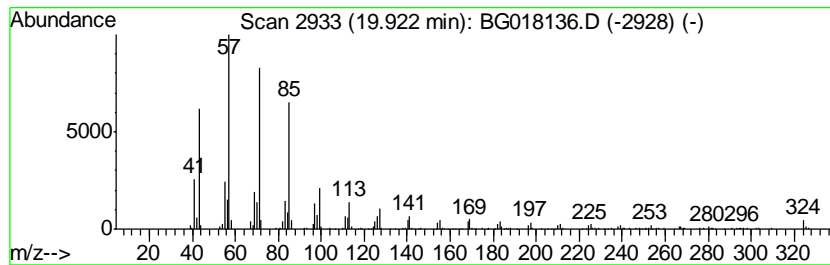
TIC Library : C:\DATABASE\NIST02.L  
 TIC Integration Parameters: LSCINT.P

\*\*\*\*\*  
 Peak Number 3 (DEL) Alkane: Straight-Chai... Concentration Rank 3

R.T.	EstConc	Area	Relative to ISTD	R.T.
19.92	11.23 ng/ul	402925	Chrysene-d12	21.14

Hit#	of	Tentative ID	MW	MolForm	CAS#	Qual
1	5	Eicosane	282	C20H42	000112-95-8	98
2		Heptadecane	240	C17H36	000629-78-7	95
3		Nonadecane	268	C19H40	000629-92-5	94
4		Heptadecane	240	C17H36	000629-78-7	93
5		Pentacosane	352	C25H52	000629-99-2	91



Data Path : Z:\HPCHEM1\BNA\_G\DATA\BG072715\  
 Data File : BG018136.D  
 Acq On : 28 Jul 2015 4:57  
 Operator : TP/UM  
 Sample : G3000-13  
 Misc :  
 ALS Vial : 27 Sample Multiplier: 1

Instrument :  
 BNA\_G  
 ClientSampled :  
 C02B9

Quant Method : Z:\HPCHEM1\BNA\_G\METHODS\SOM02.2-EPA-BG072315.M  
 Quant Title : SVOA CALIBRATION

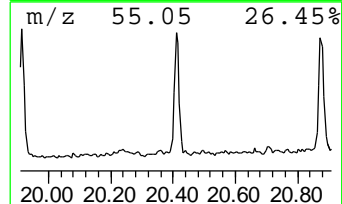
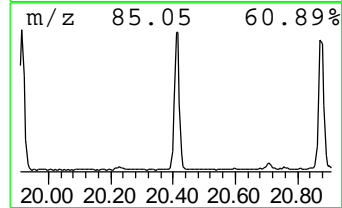
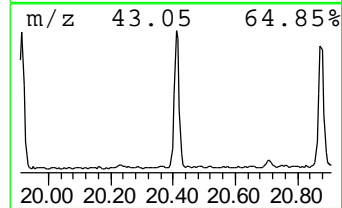
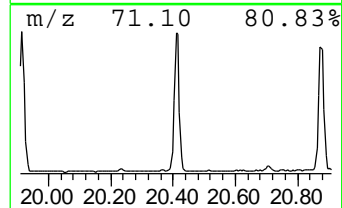
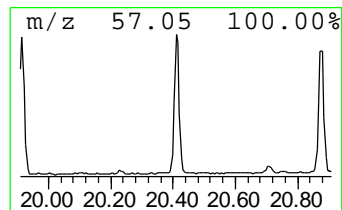
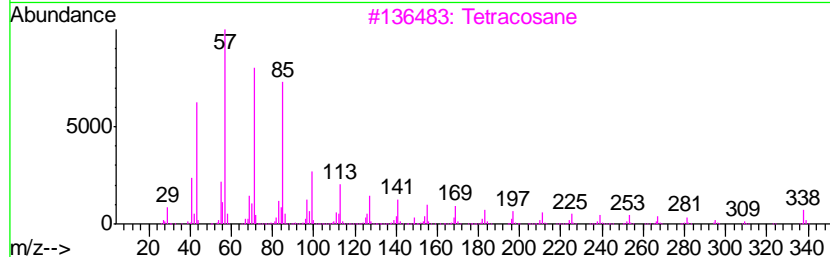
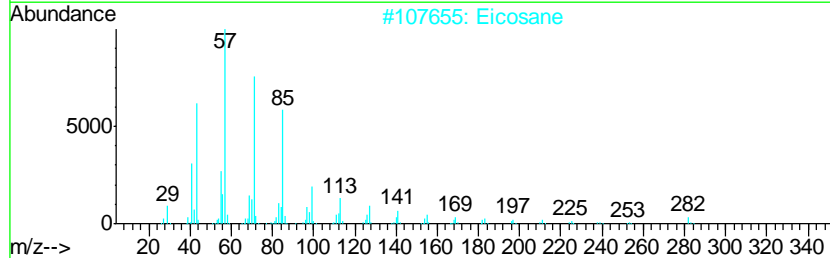
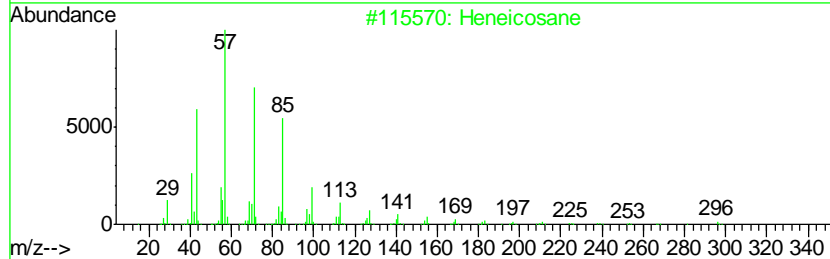
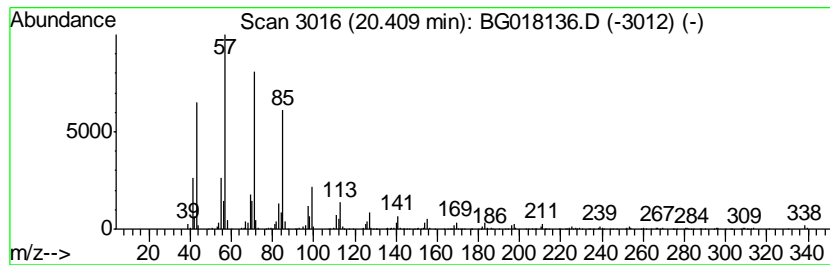
TIC Library : C:\DATABASE\NIST02.L  
 TIC Integration Parameters: LSCINT.P

\*\*\*\*\*  
 Peak Number 4 (DEL) Alkane: Straight-Chai... Concentration Rank 2

R.T.	EstConc	Area	Relative to ISTD	R.T.
20.41	12.10 ng/ul	434269	Chrysene-d12	21.14

Hit#	of	Tentative ID	MW	MolForm	CAS#	Qual
1	5	Heneicosane	296	C21H44	000629-94-7	97
2		Eicosane	282	C20H42	000112-95-8	97
3		Tetracosane	338	C24H50	000646-31-1	97
4		Tetracosane	338	C24H50	000646-31-1	96
5		Tetracosane	338	C24H50	000646-31-1	95





Data Path : Z:\HPCHEM1\BNA\_G\DATA\BG072715\  
 Data File : BG018136.D  
 Acq On : 28 Jul 2015 4:57  
 Operator : TP/UM  
 Sample : G3000-13  
 Misc :  
 ALS Vial : 27 Sample Multiplier: 1

Instrument :  
 BNA\_G  
 ClientSampled :  
 C02B9

Quant Method : Z:\HPCHEM1\BNA\_G\METHODS\SOM02.2-EPA-BG072315.M  
 Quant Title : SVOA CALIBRATION

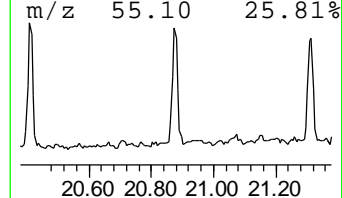
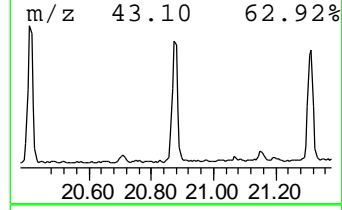
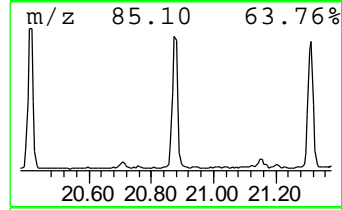
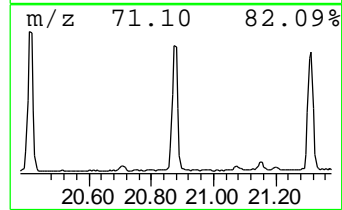
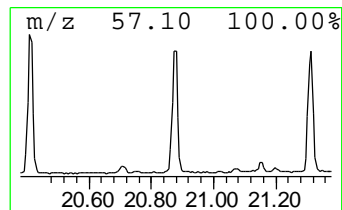
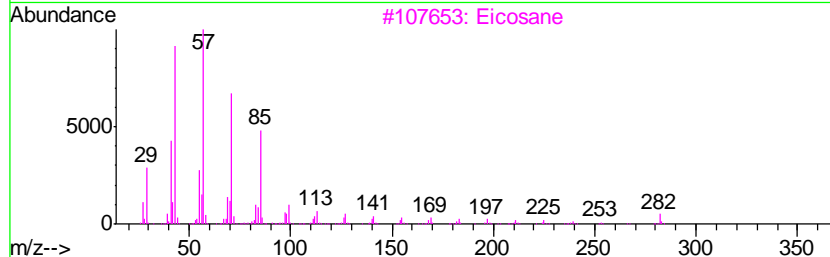
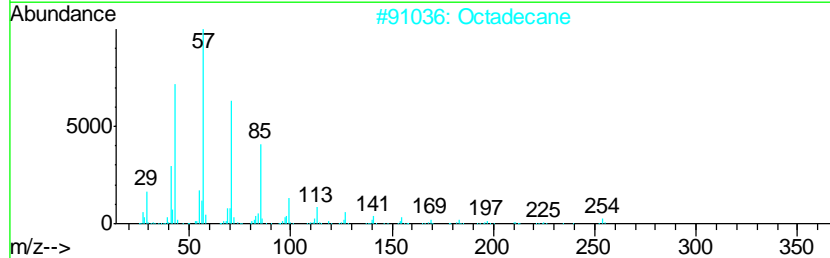
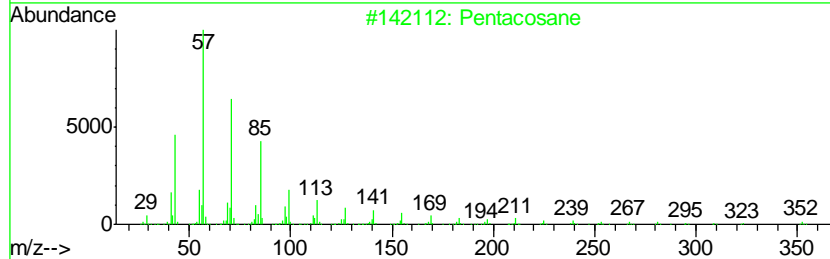
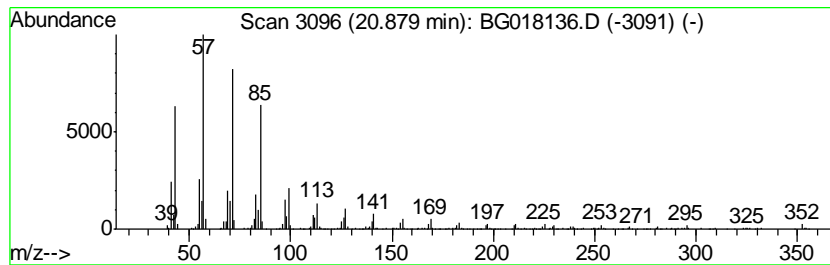
TIC Library : C:\DATABASE\NIST02.L  
 TIC Integration Parameters: LSCINT.P

\*\*\*\*\*  
 Peak Number 5 (DEL) Alkane: Straight-Chai... Concentration Rank 1

R.T.	EstConc	Area	Relative to ISTD	R.T.
20.88	12.32 ng/ul	442170	Chrysene-d12	21.14

Hit#	of	Tentative ID	MW	MolForm	CAS#	Qual
1	5	Pentacosane	352	C25H52	000629-99-2	98
2		Octadecane	254	C18H38	000593-45-3	97
3		Eicosane	282	C20H42	000112-95-8	95
4		Heptadecane	240	C17H36	000629-78-7	95
5		Pentacosane	352	C25H52	000629-99-2	95



Data Path : Z:\HPCHEM1\BNA\_G\DATA\BG072715\  
 Data File : BG018136.D  
 Acq On : 28 Jul 2015 4:57  
 Operator : TP/UM  
 Sample : G3000-13  
 Misc :  
 ALS Vial : 27 Sample Multiplier: 1

Instrument :  
 BNA\_G  
 ClientSampled :  
 C02B9

Quant Method : Z:\HPCHEM1\BNA\_G\METHODS\SOM02.2-EPA-BG072315.M  
 Quant Title : SVOA CALIBRATION

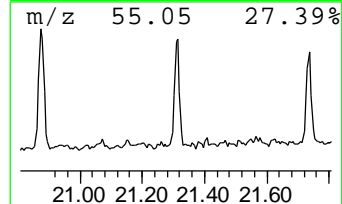
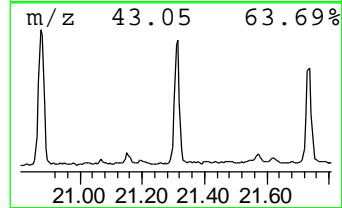
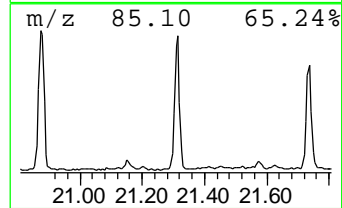
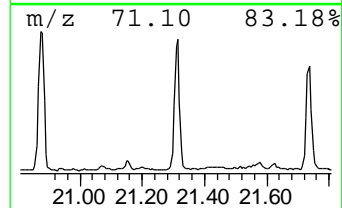
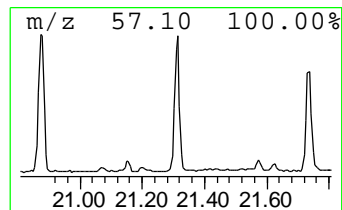
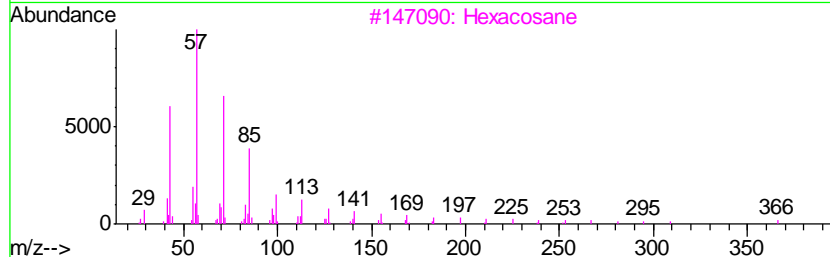
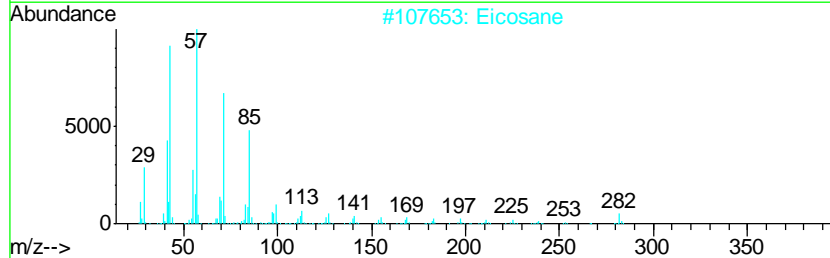
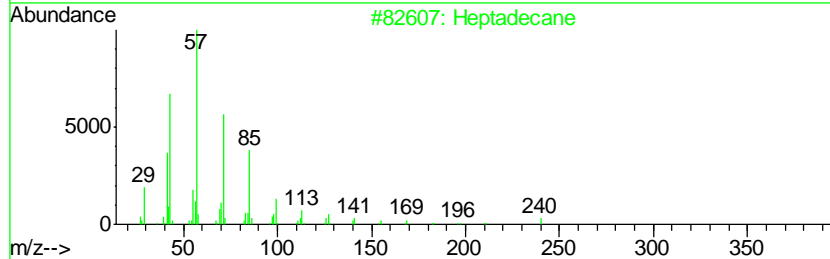
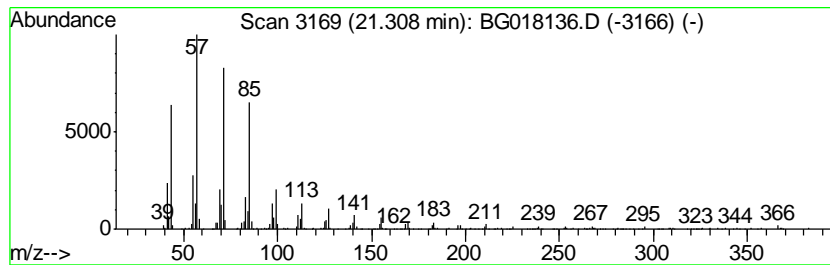
TIC Library : C:\DATABASE\NIST02.L  
 TIC Integration Parameters: LSCINT.P

\*\*\*\*\*  
 Peak Number 6 (DEL) Alkane: Straight-Chai... Concentration Rank 4

R.T.	EstConc	Area	Relative to ISTD	R.T.
21.31	10.12 ng/ul	363242	Chrysene-d12	21.14

Hit#	of	Tentative ID	MW	MolForm	CAS#	Qual
1	5	Heptadecane	240	C17H36	000629-78-7	97
2		Eicosane	282	C20H42	000112-95-8	95
3		Hexacosane	366	C26H54	000630-01-3	93
4		Nonadecane, 9-methyl-	282	C20H42	013287-24-6	93
5		Hexadecane, 1-iodo-	352	C16H33I	000544-77-4	93



Data Path : Z:\HPCHEM1\BNA\_G\DATA\BG072715\  
 Data File : BG018136.D  
 Acq On : 28 Jul 2015 4:57  
 Operator : TP/UM  
 Sample : G3000-13  
 Misc :  
 ALS Vial : 27 Sample Multiplier: 1

Instrument :  
 BNA\_G  
 ClientSampled :  
 C02B9

Quant Method : Z:\HPCHEM1\BNA\_G\METHODS\SOM02.2-EPA-BG072315.M  
 Quant Title : SVOA CALIBRATION

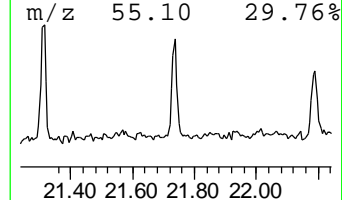
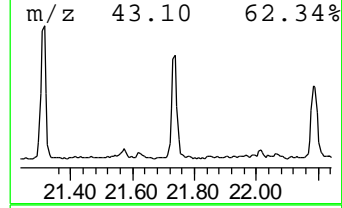
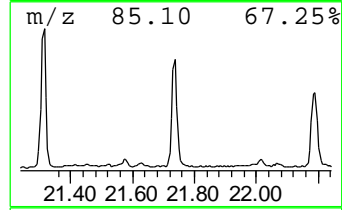
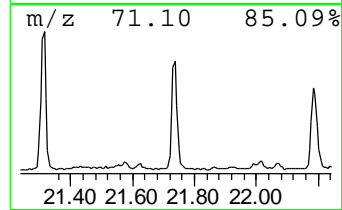
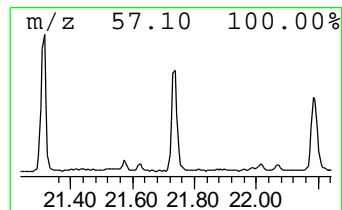
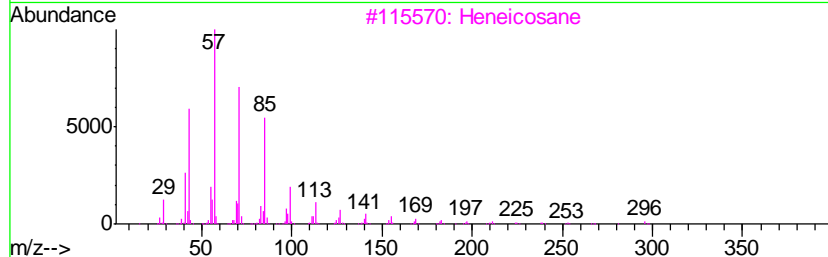
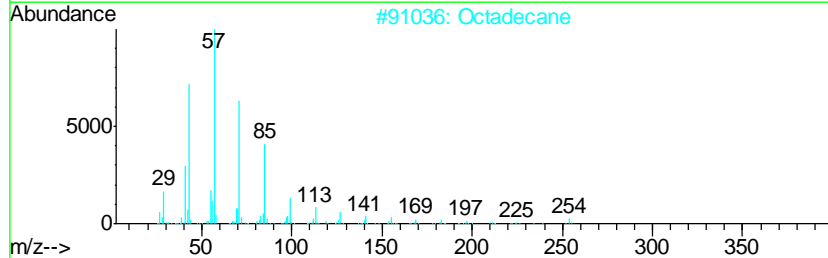
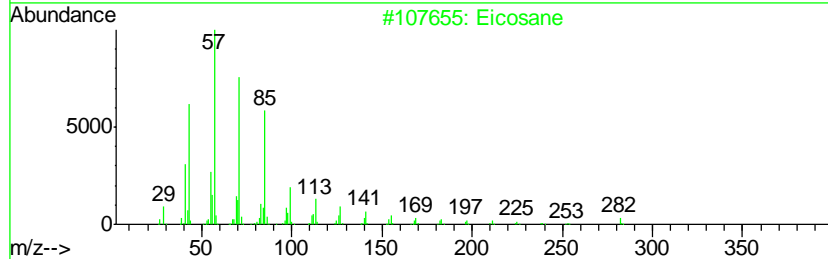
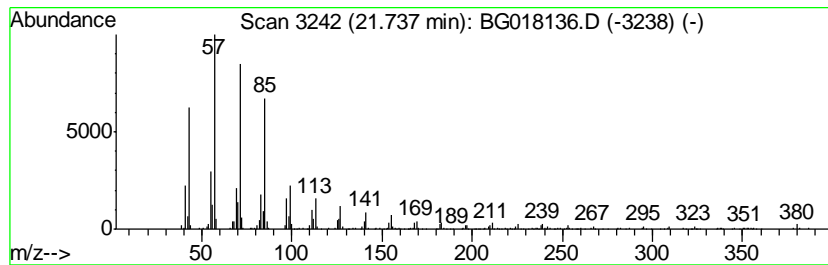
TIC Library : C:\DATABASE\NIST02.L  
 TIC Integration Parameters: LSCINT.P

\*\*\*\*\*  
 Peak Number 7 (DEL) Alkane: Straight-Chai... Concentration Rank 6

R.T.	EstConc	Area	Relative to ISTD	R.T.
21.74	8.86 ng/ul	318035	Chrysene-d12	21.14

Hit#	of	Tentative ID	MW	MolForm	CAS#	Qual
1	5	Eicosane	282	C20H42	000112-95-8	98
2		Octadecane	254	C18H38	000593-45-3	97
3		Heneicosane	296	C21H44	000629-94-7	96
4		Hexadecane, 1-iodo-	352	C16H33I	000544-77-4	96
5		Heptacosane	380	C27H56	000593-49-7	94



Data Path : Z:\HPCHEM1\BNA\_G\DATA\BG072715\  
 Data File : BG018136.D  
 Acq On : 28 Jul 2015 4:57  
 Operator : TP/UM  
 Sample : G3000-13  
 Misc :  
 ALS Vial : 27 Sample Multiplier: 1

Instrument :  
 BNA\_G  
 ClientSampled :  
 C02B9

Quant Method : Z:\HPCHEM1\BNA\_G\METHODS\SOM02.2-EPA-BG072315.M  
 Quant Title : SVOA CALIBRATION

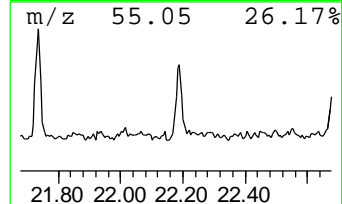
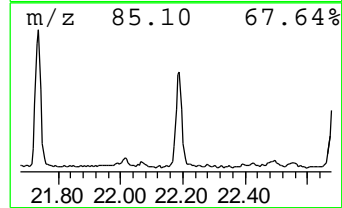
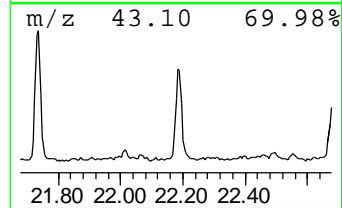
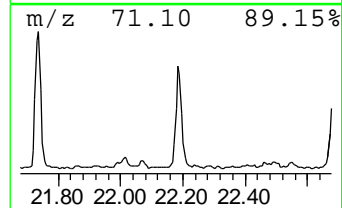
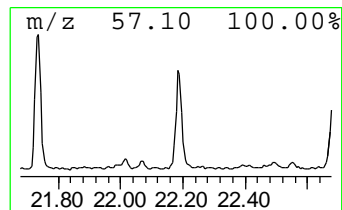
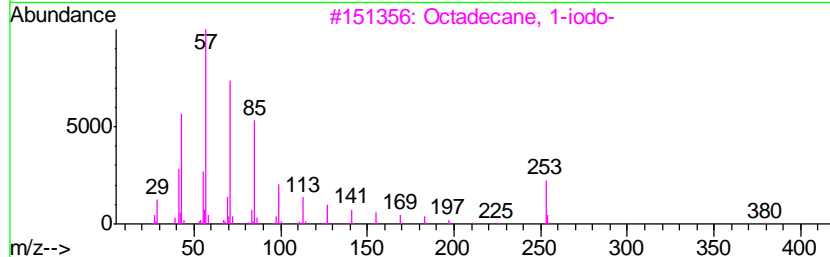
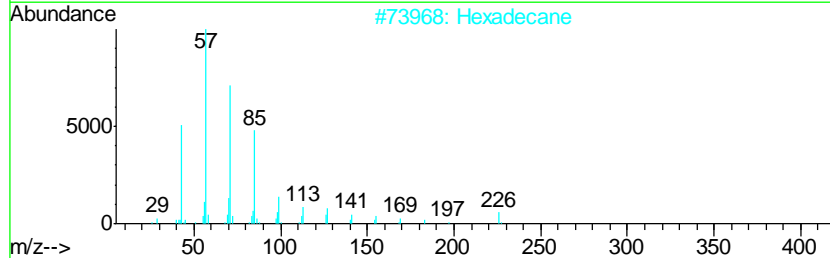
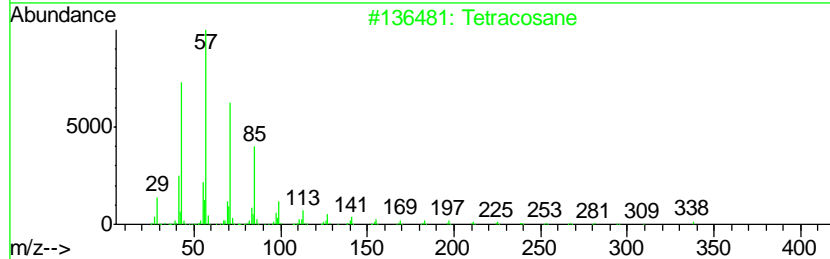
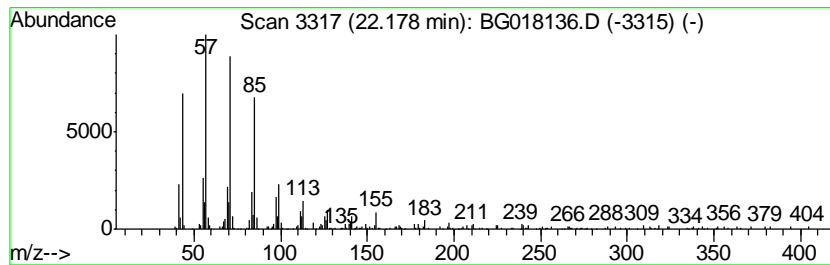
TIC Library : C:\DATABASE\NIST02.L  
 TIC Integration Parameters: LSCINT.P

\*\*\*\*\*  
 Peak Number 8 (DEL) Alkane: Straight-Chai... Concentration Rank 7

R.T.	EstConc	Area	Relative to ISTD	R.T.
22.18	7.15 ng/ul	256611	Chrysene-d12	21.14

Hit#	of	Tentative ID	MW	MolForm	CAS#	Qual
1	5	Tetracosane	338	C24H50	000646-31-1	97
2		Hexadecane	226	C16H34	000544-76-3	95
3		Octadecane, 1-iodo-	380	C18H37I	000629-93-6	94
4		Eicosane	282	C20H42	000112-95-8	91
5		Tetratriacontane	479	C34H70	014167-59-0	91



Data Path : Z:\HPCHEM1\BNA\_G\DATA\BG072715\  
 Data File : BG018136.D  
 Acq On : 28 Jul 2015 4:57  
 Operator : TP/UM  
 Sample : G3000-13  
 Misc :  
 ALS Vial : 27 Sample Multiplier: 1

Instrument :  
 BNA\_G  
 ClientSampleID :  
 C02B9

Quant Method : Z:\HPCHEM1\BNA\_G\METHODS\SOM02.2-EPA-BG072315.M  
 Quant Title : SVOA CALIBRATION

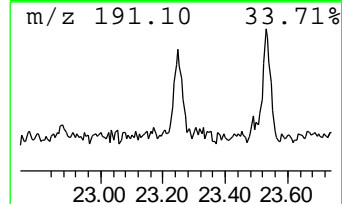
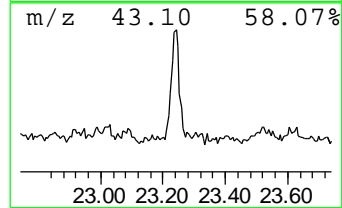
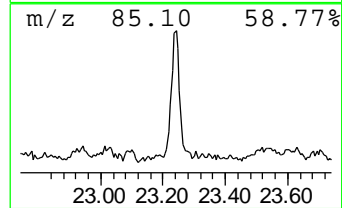
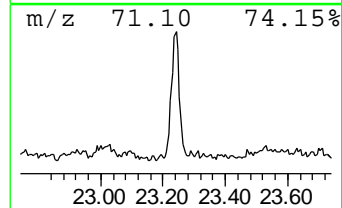
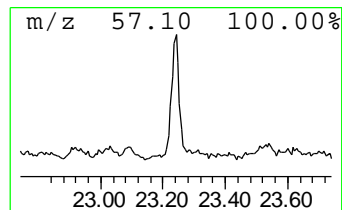
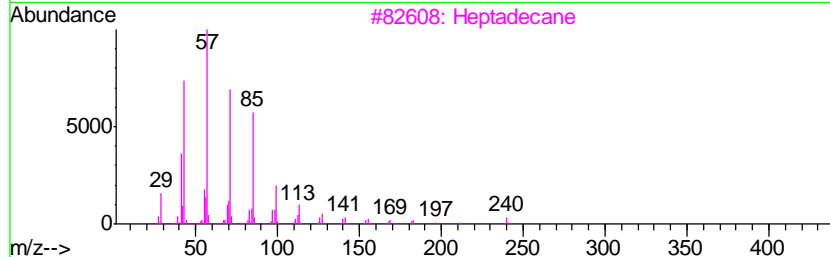
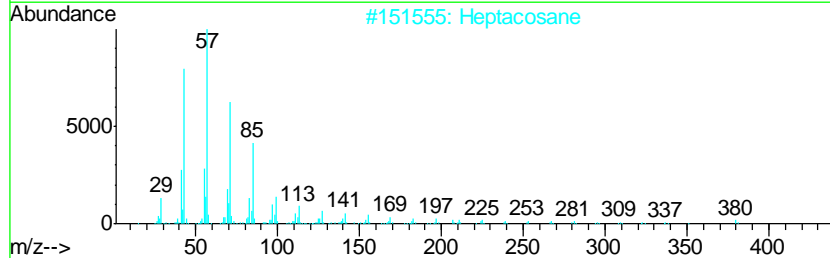
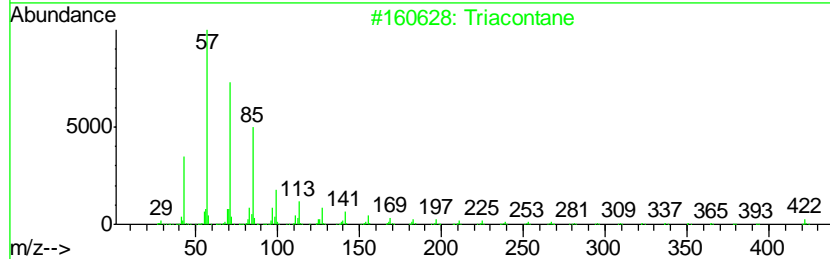
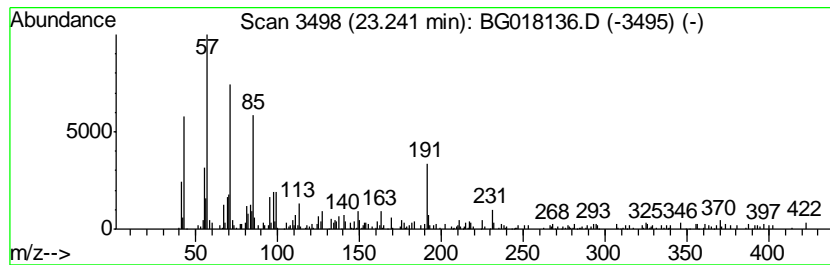
TIC Library : C:\DATABASE\NIST02.L  
 TIC Integration Parameters: LSCINT.P

\*\*\*\*\*  
 Peak Number 9 (DEL) Alkane: Straight-Chai... Concentration Rank 9

R.T.	EstConc	Area	Relative to ISTD	R.T.
23.24	5.78 ng/ul	197001	Perylene-d12	23.33

Hit#	of	Tentative ID	MW	MolForm	CAS#	Qual
1	5	Triacontane	422	C30H62	000638-68-6	93
2		Heptacosane	380	C27H56	000593-49-7	89
3		Heptadecane	240	C17H36	000629-78-7	86
4		Octacosane	394	C28H58	000630-02-4	86
5		Nonadecane	268	C19H40	000629-92-5	86



Data Path : Z:\HPCHEM1\BNA\_G\DATA\BG072715\  
 Data File : BG018136.D  
 Acq On : 28 Jul 2015 4:57  
 Operator : TP/UM  
 Sample : G3000-13  
 Misc :  
 ALS Vial : 27 Sample Multiplier: 1

Instrument :  
 BNA\_G  
 ClientSampled :  
 C02B9

Quant Method : Z:\HPCHEM1\BNA\_G\METHODS\SOM02.2-EPA-BG072315.M  
 Quant Title : SVOA CALIBRATION

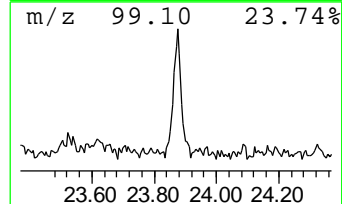
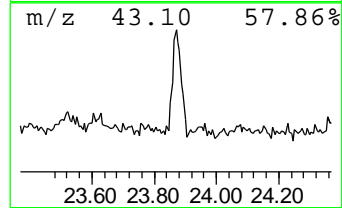
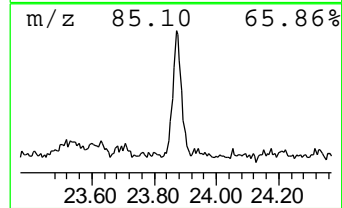
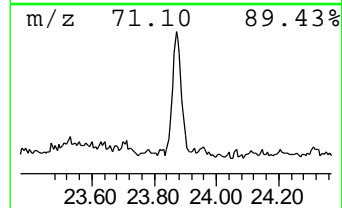
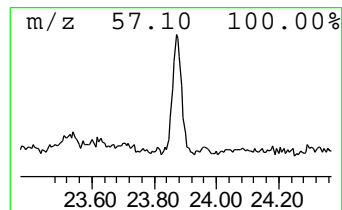
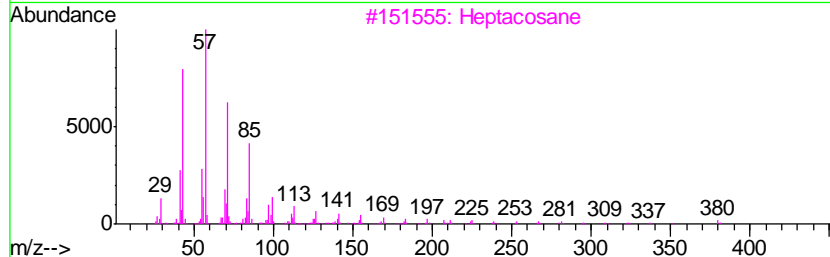
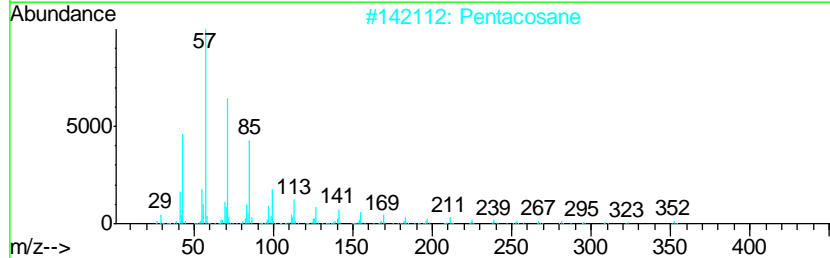
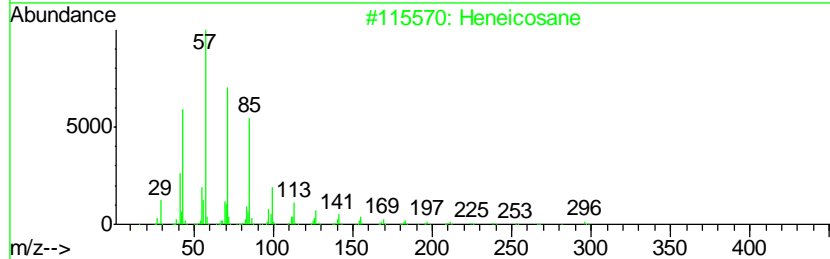
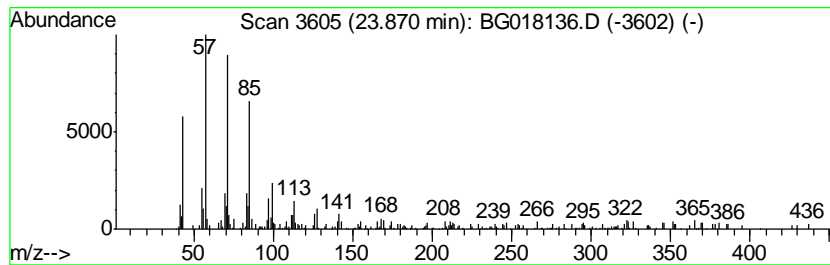
TIC Library : C:\DATABASE\NIST02.L  
 TIC Integration Parameters: LSCINT.P

\*\*\*\*\*  
 Peak Number 10 (DEL) Alkane: Straight-Chai... Concentration Rank 12

R.T.	EstConc	Area	Relative to ISTD	R.T.
23.87	3.32 ng/ul	112990	Perylene-d12	23.33

Hit#	of	Tentative ID	MW	MolForm	CAS#	Qual
1	5	Heneicosane	296	C21H44	000629-94-7	94
2		Pentacosane	352	C25H52	000629-99-2	91
3		Heptacosane	380	C27H56	000593-49-7	90
4		Octacosane	394	C28H58	000630-02-4	87
5		Eicosane	282	C20H42	000112-95-8	87



Data Path : Z:\HPCHEM1\BNA\_G\DATA\BG072715\  
 Data File : BG018136.D  
 Acq On : 28 Jul 2015 4:57  
 Operator : TP/UM  
 Sample : G3000-13  
 Misc :  
 ALS Vial : 27 Sample Multiplier: 1

Instrument :  
 BNA\_G  
 ClientSampleID :  
 C02B9

Quant Method : Z:\HPCHEM1\BNA\_G\METHODS\SOM02.2-EPA-BG072315.M  
 Quant Title : SVOA CALIBRATION

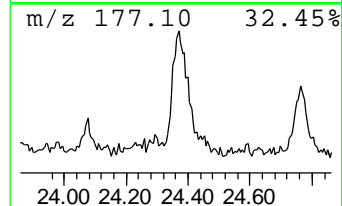
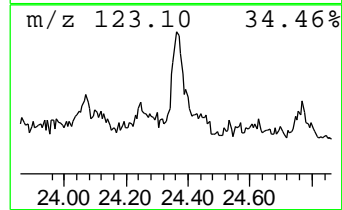
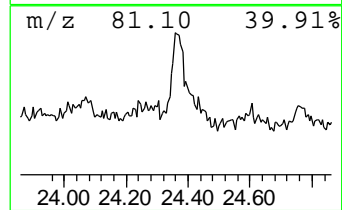
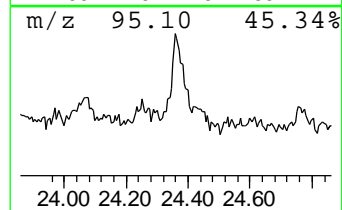
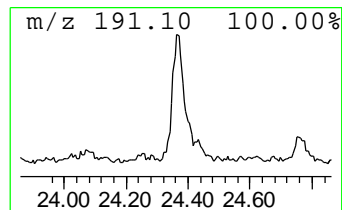
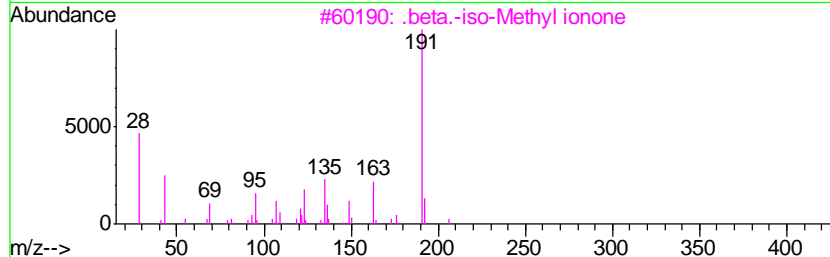
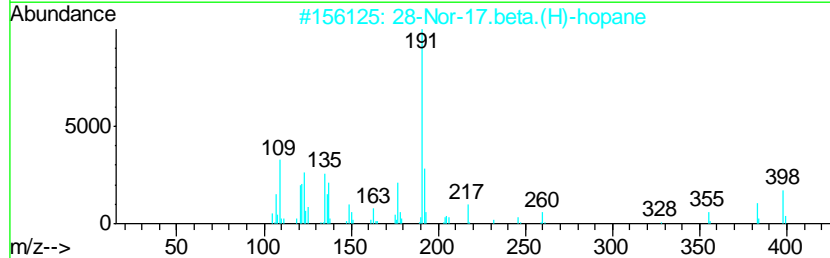
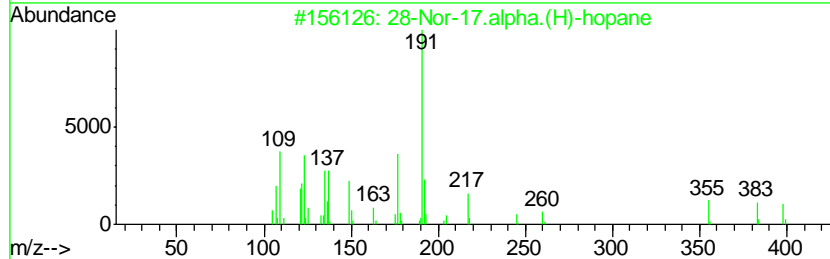
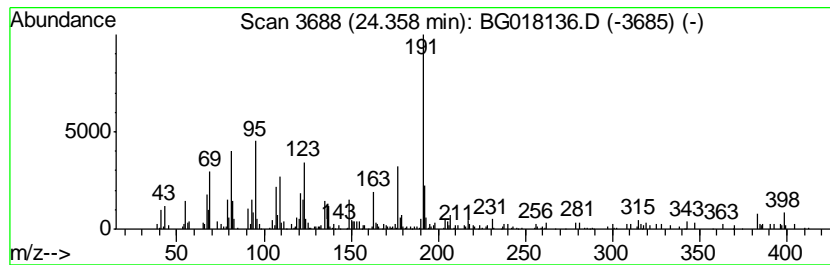
TIC Library : C:\DATABASE\NIST02.L  
 TIC Integration Parameters: LSCINT.P

\*\*\*\*\*  
 Peak Number 11 28-Nor-17.alpha.(H)-hopane Concentration Rank 8

R.T.	EstConc	Area	Relative to ISTD	R.T.
24.36	6.26 ng/ul	213138	Perylene-d12	23.33

Hit#	of	Tentative ID	MW	MolForm	CAS#	Qual
1	5	28-Nor-17.alpha.(H)-hopane	398	C29H50	053584-60-4	91
2		28-Nor-17.beta.(H)-hopane	398	C29H50	036728-72-0	58
3		.beta.-iso-Methyl ionone	206	C14H22O	1000285-40-2	47
4		1-Penten-3-one, 1-(2,6,6-trimeth...	206	C14H22O	000127-43-5	45
5		2,4,5,5,8a-Pentamethyl-6,7,8,8a-...	206	C14H22O	1000195-40-9	40



Data Path : Z:\HPCHEM1\BNA\_G\DATA\BG072715\  
 Data File : BG018136.D  
 Acq On : 28 Jul 2015 4:57  
 Operator : TP/UM  
 Sample : G3000-13  
 Misc :  
 ALS Vial : 27 Sample Multiplier: 1

Instrument :  
 BNA\_G  
 ClientSampled :  
 C02B9

Quant Method : Z:\HPCHEM1\BNA\_G\METHODS\SOM02.2-EPA-BG072315.M  
 Quant Title : SVOA CALIBRATION

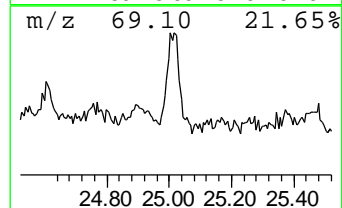
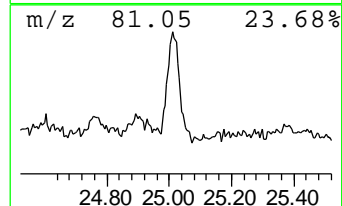
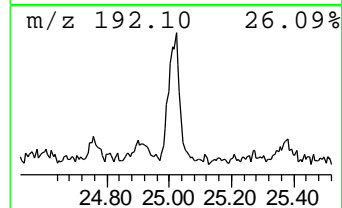
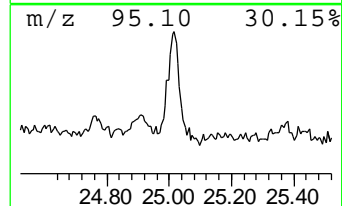
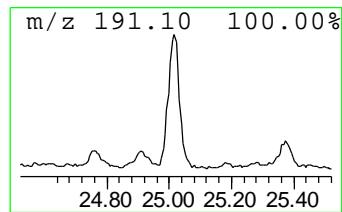
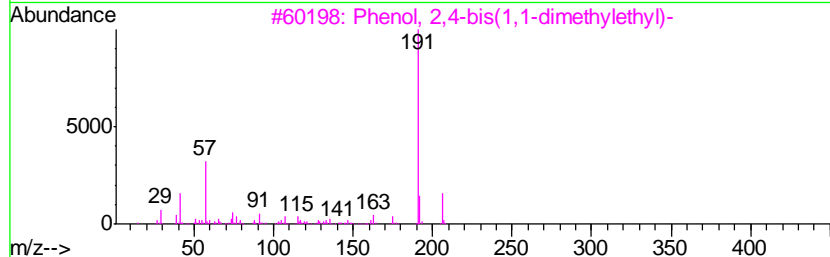
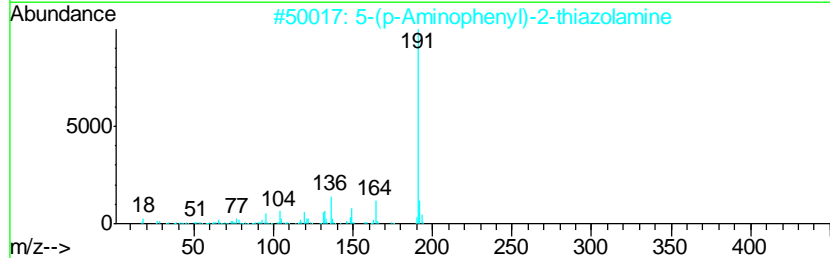
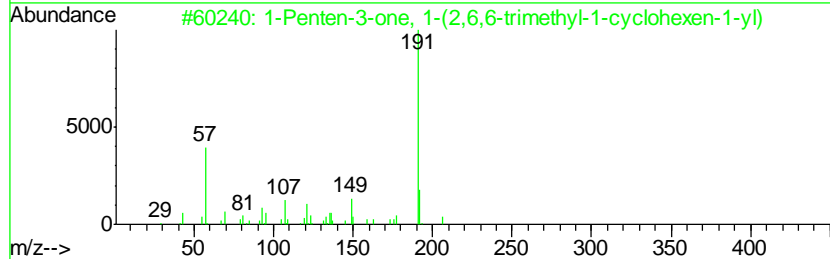
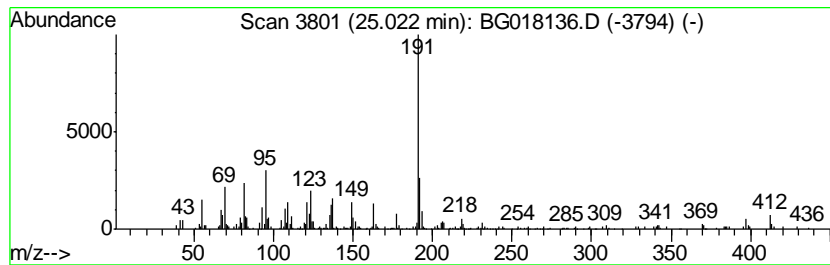
TIC Library : C:\DATABASE\NIST02.L  
 TIC Integration Parameters: LSCINT.P

\*\*\*\*\*  
 Peak Number 12 1-Penten-3-one, 1-(2,6,6-tr... Concentration Rank 5

R.T.	EstConc	Area	Relative to ISTD	R.T.
25.02	9.56 ng/ul	325598	Perylene-d12	23.33

Hit#	of	Tentative ID	MW	MolForm	CAS#	Qual
1	5	1-Penten-3-one, 1-(2,6,6-trimeth...	206	C14H22O	000127-43-5	70
2		5-(p-Aminophenyl)-2-thiazolamine	191	C9H9N3S	090349-87-4	47
3		Phenol, 2,4-bis(1,1-dimethylethyl)-	206	C14H22O	000096-76-4	43
4		Phenol, 2,4-bis(1,1-dimethylethyl)-	206	C14H22O	000096-76-4	43
5		.beta.-iso-Methyl ionone	206	C14H22O	1000285-40-2	42





Data Path : Z:\HPCHEM1\BNA\_G\DATA\BG072715\  
 Data File : BG018136.D  
 Acq On : 28 Jul 2015 4:57  
 Operator : TP/UM  
 Sample : G3000-13  
 Misc :  
 ALS Vial : 27 Sample Multiplier: 1

Instrument :  
 BNA\_G  
 ClientSampleID :  
 C02B9

Quant Method : Z:\HPCHEM1\BNA\_G\METHODS\SOM02.2-EPA-BG072315.M  
 Quant Title : SVOA CALIBRATION

TIC Library : C:\DATABASE\NIST02.L  
 TIC Integration Parameters: LSCINT.P

TIC Top Hit name	RT	EstConc	Units	Response	--Internal Standard--			
					#	RT	Resp	Conc
(DEL) Alkane: Str...	18.79	5.1	ng/ul	154259	4	16.94	605842	20.0
10,18-Bisnorabiet...	19.07	3.6	ng/ul	131090	5	21.14	717700	20.0
(DEL) Alkane: Str...	19.92	11.2	ng/ul	402925	5	21.14	717700	20.0
(DEL) Alkane: Str...	20.41	12.1	ng/ul	434269	5	21.14	717700	20.0
(DEL) Alkane: Str...	20.88	12.3	ng/ul	442170	5	21.14	717700	20.0
(DEL) Alkane: Str...	21.31	10.1	ng/ul	363242	5	21.14	717700	20.0
(DEL) Alkane: Str...	21.74	8.9	ng/ul	318035	5	21.14	717700	20.0
(DEL) Alkane: Str...	22.18	7.2	ng/ul	256611	5	21.14	717700	20.0
(DEL) Alkane: Str...	23.24	5.8	ng/ul	197001	6	23.33	681198	20.0
(DEL) Alkane: Str...	23.87	3.3	ng/ul	112990	6	23.33	681198	20.0
28-Nor-17.alpha.(...	24.36	6.3	ng/ul	213138	6	23.33	681198	20.0
1-Penten-3-one, 1...	25.02	9.6	ng/ul	325598	6	23.33	681198	20.0