

Data Path : Z:\HPCHEM1\BNA_G\DATA\BG073117\
 Data File : BG028071.D
 Acq On : 31 Jul 2017 15:27
 Operator : SJ/JU
 Sample : MDL-S-ML-02
 Misc :
 ALS Vial : 6 Sample Multiplier: 1

Instrument :
 BNA_G
 ClientSampled :
 MDL-S-ML-02

Manual Integrations
 APPROVED

Sohil
 8/1/2017 2:55:11 PM

Quant Time: Jul 31 17:52:50 2017
 Quant Method : Z:\HPCHEM1\BNA_G\METHODS\SOM-EPA-BG072717MA.M
 Quant Title : SVOA CALIBRATION
 QLast Update : Mon Jul 31 17:31:12 2017
 Response via : Initial Calibration

Internal Standards	R.T.	QIon	Response	Conc	Units	Dev(Min)
1) 1,4-Dichlorobenzene-d4	8.37	152	29970	20.00	ng/ul	0.00
18) Naphthalene-d8	11.19	136	137503	20.00	ng/ul	0.00
36) Acenaphthene-d10	14.97	164	111323	20.00	ng/ul	0.00
62) Phenanthrene-d10	17.72	188	337196	20.00	ng/ul	0.00
78) Chrysene-d12	22.06	240	461256	20.00	ng/ul	0.00
86) Perylene-d12	25.57	264	455175	20.00	ng/ul	-0.02

System Monitoring Compounds

3) 1,4-Dioxane-d8	3.85	96	2883	6.23	ng/uL	0.00
5) Phenol-d5	7.50	99	60624	26.78	ng/ul	0.00
7) Bis-(2-Chloroethyl)ether-d	7.68	67	32288	28.52	ng/ul	0.00
9) 2-Chlorophenol-d4	7.90	132	55019	28.83	ng/ul	0.00
13) 4-Methylphenol-d8	9.06	113	56815	28.12	ng/ul	0.00
19) Nitrobenzene-d5	9.54	128	28420	29.57	ng/ul	0.00
22) 2-Nitrophenol-d4	10.26	143	35836	29.28	ng/ul	0.00
26) 2,4-Dichlorophenol-d3	10.79	165	65862	27.34	ng/ul	0.00
29) 4-Chloroaniline-d4	11.31	131	83087	34.19	ng/ul	0.00
44) Dimethylphthalate-d6	14.36	166	313811	31.15	ng/ul	0.00
47) Acenaphthylene-d8	14.67	160	323400	29.67	ng/ul	0.00
52) 4-Nitrophenol-d4	15.15	143	41756	27.59	ng/ul	0.00
58) Fluorene-d10	15.96	176	279206	30.09	ng/ul	0.00
63) 4,6-Dinitro-2-methylphenol	16.07	200	64683	26.94	ng/ul	0.00
71) Anthracene-d10	17.82	188	489946	30.34	ng/ul	0.00
79) Pyrene-d10	20.10	212	633459	30.92	ng/ul	0.00
90) Benzo(a)pyrene-d12	25.33	264	632365	30.20	ng/ul	0.00

Target Compounds

Target Compounds	R.T.	QIon	Response	Conc	Units	Qvalue
2) 1,4-Dioxane	3.88	88	737	1.486	ng/uL#	80
4) Benzaldehyde	7.51	77	4881	4.357	ng/ul	91
6) Phenol	7.54	94	7840	3.571	ng/ul#	90
8) Bis(2-Chloroethyl)ether	7.77	93	5647	3.634	ng/ul	89
10) 2-Chlorophenol	7.93	128	6412	3.647	ng/ul	92
11) 2-Methylphenol	8.80	108	5275	3.082	ng/ul	98
12) 2,2'-oxybis(1-Chloropropan	8.89	45	6646	3.258	ng/ul	99
14) Acetophenone	9.19	105	11188	3.811	ng/ul	91
15) N-Nitroso-di-n-propylamine	9.16	70	4951	3.592	ng/ul#	87
16) 4-Methylphenol	9.11	108	6937	3.653	ng/ul	90
17) Hexachloroethane	9.46	117	2402	3.415	ng/ul#	77
20) Nitrobenzene	9.58	77	7778	3.769	ng/ul#	90
21) Isophorone	10.09	82	14763	3.743	ng/ul#	86
23) 2-Nitrophenol	10.30	139	4214	3.573	ng/ul#	85
24) 2,4-Dimethylphenol	10.32	107	8628	3.657	ng/ul	90
25) Bis(2-Chloroethoxy)methane	10.57	93	8634	3.769	ng/ul#	93
27) 2,4-Dichlorophenol	10.82	162	8259	3.598	ng/ul	92
28) Naphthalene	11.24	128	23735	3.824	ng/ul	96
30) 4-Chloroaniline	11.34	127	7155	3.094	ng/ul	92
31) Hexachlorobutadiene	11.51	225	7782	3.918	ng/ul	92
32) Caprolactam	12.15	113	3034m	4.118	ng/ul	
33) 4-Chloro-3-methylphenol	12.44	107	7719	3.451	ng/ul	87
34) 2-Methylnaphthalene	12.82	142	20357	3.801	ng/ul	95

Data Path : Z:\HPCHEM1\BNA_G\DATA\BG073117\
 Data File : BG028071.D
 Acq On : 31 Jul 2017 15:27
 Operator : SJ/JU
 Sample : MDL-S-ML-02
 Misc :
 ALS Vial : 6 Sample Multiplier: 1

Instrument :
 BNA_G
 ClientSampled :
 MDL-S-ML-02

Manual Integrations
 APPROVED

Sohil
 8/1/2017 2:55:11 PM

Quant Time: Jul 31 17:52:50 2017
 Quant Method : Z:\HPCHEM1\BNA_G\METHODS\SOM-EPA-BG072717MA.M
 Quant Title : SVOA CALIBRATION
 QLast Update : Mon Jul 31 17:31:12 2017
 Response via : Initial Calibration

Internal Standards	R.T.	QIon	Response	Conc	Units	Dev(Min)
35) 1-Methylnaphthalene	13.03	142	19908	3.833	ng/ul	85
37) 1,2,4,5-Tetrachlorobenzene	13.18	216	15681	3.656	ng/ul	96
38) Hexachlorocyclopentadiene	13.16	237	5497	2.186	ng/ul#	99
39) 2,4,6-Trichlorophenol	13.41	196	7851	3.067	ng/ul	94
40) 2,4,5-Trichlorophenol	13.49	196	8560m	3.148	ng/ul	
41) 1,1'-Biphenyl	13.80	154	28715	3.549	ng/ul	95
42) 2-Chloronaphthalene	13.86	162	23735	3.637	ng/ul	96
43) 2-Nitroaniline	14.06	65	5190	3.374	ng/ul	93
45) Dimethylphthalate	14.41	163	36401	3.944	ng/ul	99
46) 2,6-Dinitrotoluene	14.54	165	6032	3.256	ng/ul#	94
48) Acenaphthylene	14.70	152	41017	3.971	ng/ul	95
49) 3-Nitroaniline	14.88	138	4912	3.190	ng/ul	81
50) Acenaphthene	15.04	153	26809	3.790	ng/ul	94
51) 2,4-Dinitrophenol	15.08	184	2417	2.044	ng/ul#	78
53) 4-Nitrophenol	15.17	109	4629	3.761	ng/ul	90
54) Dibenzofuran	15.37	168	41178	3.829	ng/ul	93
55) 2,4-Dinitrotoluene	15.32	165	10635	3.843	ng/ul#	82
56) 2,3,4,6-Tetrachlorophenol	15.59	232	9667	3.338	ng/ul	95
57) Diethylphthalate	15.77	149	35687	3.683	ng/ul	96
59) Fluorene	16.01	166	35037	3.755	ng/ul	98
60) 4-Chlorophenyl-phenylether	16.00	204	20396	3.660	ng/ul#	92
61) 4-Nitroaniline	16.04	138	6800	3.718	ng/ul	88
64) 4,6-Dinitro-2-methylphenol	16.08	198	8624	3.749	ng/ul#	68
65) N-Nitrosodiphenylamine	16.21	169	31031	3.646	ng/ul	98
66) 4-Bromophenyl-phenylether	16.90	248	14775	3.408	ng/ul	95
67) Hexachlorobenzene	17.02	284	18485	3.749	ng/ul#	90
68) Atrazine	17.15	200	13472	3.317	ng/ul	95
69) Pentachlorophenol	17.37	266	5814	2.258	ng/ul	94
70) Phenanthrene	17.76	178	64296	3.835	ng/ul	98
72) Anthracene	17.86	178	66017	3.782	ng/ul	98
73) 1,2,3,4-Tetrachlorobenzene	13.77	216	15652	3.328	ng/uL	84
74) Pentachlorobenzene	15.29	250	23949	3.427	ng/uL	93
75) Carbazole	18.13	167	51899	3.631	ng/ul	98
76) Di-n-butylphthalate	18.65	149	56941	3.588	ng/ul	99
77) Fluoranthene	19.76	202	86286	4.027	ng/ul#	94
80) Pyrene	20.12	202	93355	3.899	ng/ul#	93
81) Butylbenzylphthalate	20.99	149	25102	3.528	ng/ul#	82
82) 3,3'-Dichlorobenzidine	21.94	252	26098	3.093	ng/ul#	96
83) Benzo(a)anthracene	22.03	228	90085	3.677	ng/ul	98
84) Bis(2-ethylhexyl)phthalate	21.89	149	33609	3.229	ng/ul#	97
85) Chrysene	22.10	228	84418	3.767	ng/ul	99
87) Di-n-octyl phthalate	23.20	149	54812	3.055	ng/ul	100
88) Benzo(b)fluoranthene	24.44	252	88553	3.494	ng/ul#	97
89) Benzo(k)fluoranthene	24.52	252	91990	3.724	ng/ul#	96
91) Benzo(a)pyrene	25.40	252	91042	3.734	ng/ul	93
92) Indeno(1,2,3-cd)pyrene	29.60	276	104254m	3.523	ng/ul	
93) Dibenzo(a,h)anthracene	29.66	278	90039m	3.548	ng/ul	
94) Benzo(g,h,i)perylene	30.87	276	86479	3.525	ng/ul#	92

Data Path : Z:\HPCHEM1\BNA_G\DATA\BG073117\
 Data File : BG028071.D
 Acq On : 31 Jul 2017 15:27
 Operator : SJ/JU
 Sample : MDL-S-ML-02
 Misc :
 ALS Vial : 6 Sample Multiplier: 1

Instrument :
 BNA_G
ClientSampleId :
 MDL-S-ML-02

Manual Integrations
APPROVED
 Sohil
 8/1/2017 2:55:11 PM

Quant Time: Jul 31 17:52:50 2017
 Quant Method : Z:\HPCHEM1\BNA_G\METHODS\SOM-EPA-BG072717MA.M
 Quant Title : SVOA CALIBRATION
 QLast Update : Mon Jul 31 17:31:12 2017
 Response via : Initial Calibration

Internal Standards	R.T.	QIon	Response	Conc	Units	Dev(Min)

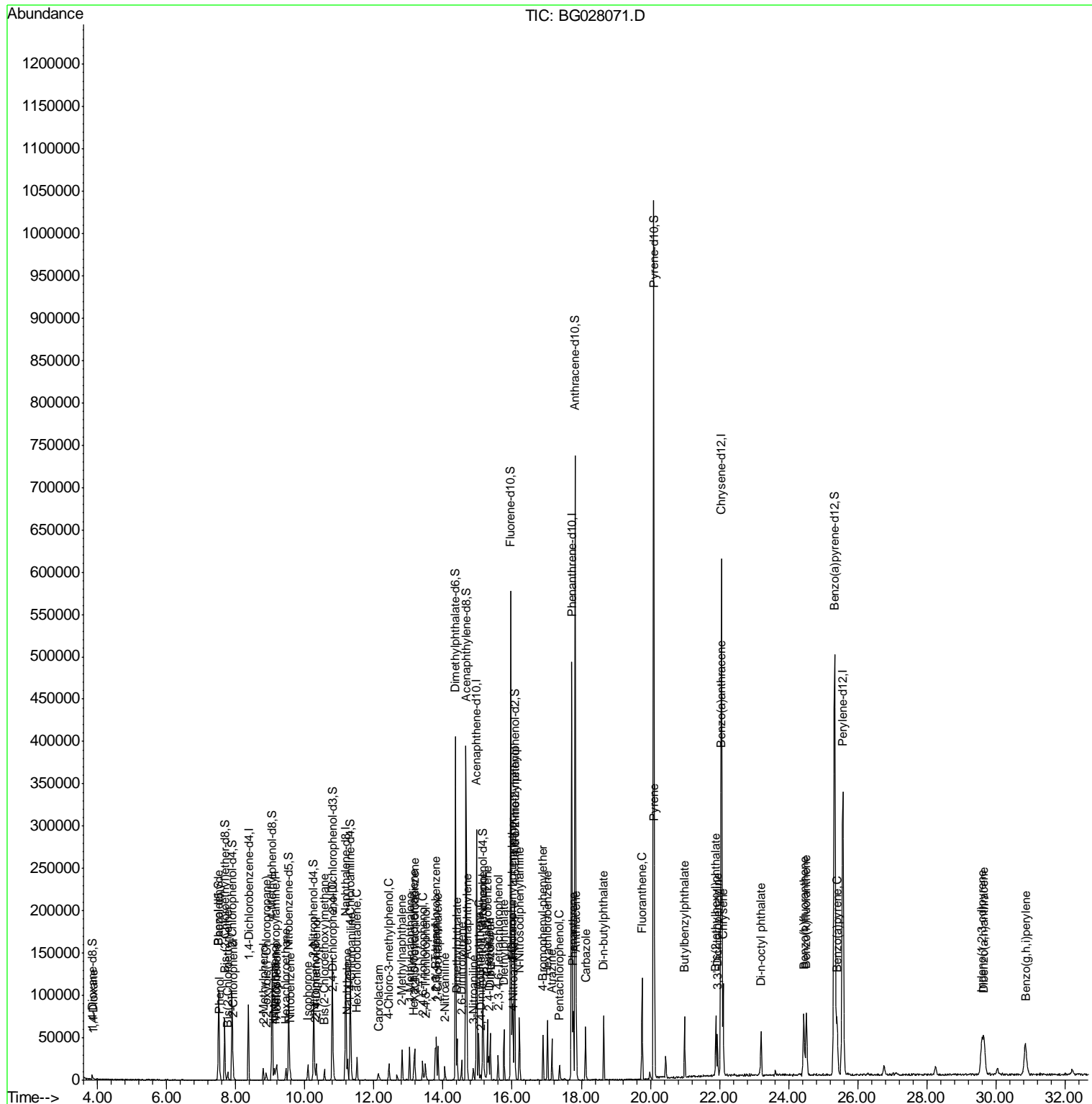
(#) = qualifier out of range (m) = manual integration (+) = signals summed						

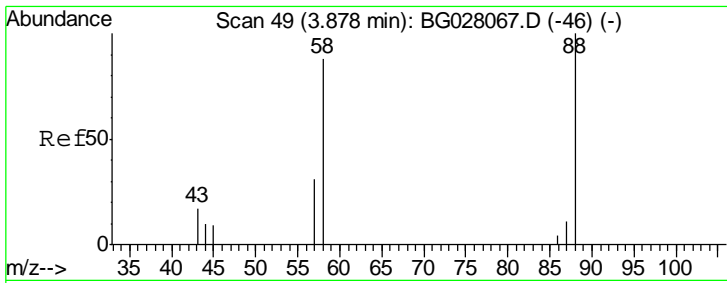
Data Path : Z:\HPCHEM1\BNA_G\DATA\BG073117\
 Data File : BG028071.D
 Acq On : 31 Jul 2017 15:27
 Operator : SJ/JU
 Sample : MDL-S-ML-02
 Misc :
 ALS Vial : 6 Sample Multiplier: 1

Instrument :
 BNA_G
 Client Sampled :
 MDL-S-ML-02

Manual Integrations
APPROVED
 Sohil
 8/1/2017 2:55:11 PM

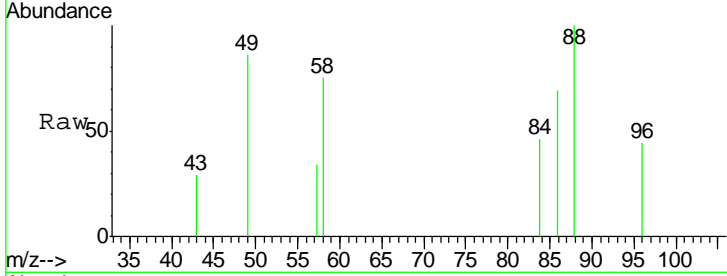
Quant Time: Jul 31 17:52:50 2017
 Quant Method : Z:\HPCHEM1\BNA_G\METHODS\SOM-EPA-BG072717MA.M
 Quant Title : SVOA CALIBRATION
 QLast Update : Mon Jul 31 17:31:12 2017
 Response via : Initial Calibration





#2
 1,4-Dioxane
 Concen: 1.486 ng/uL
 RT: 3.88 min Scan# 50
 Delta R.T. -0.00 min
 Lab File: BG028071.D
 Acq: 31 Jul 2017 15:27

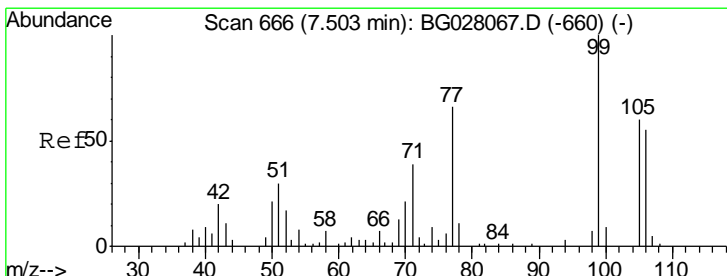
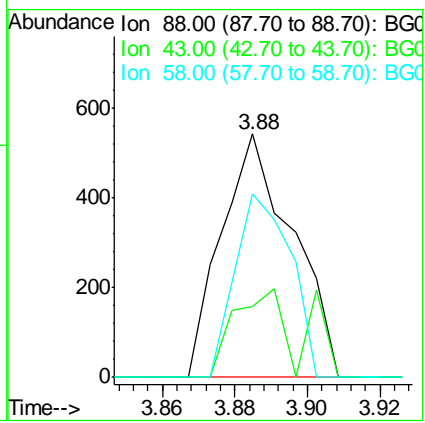
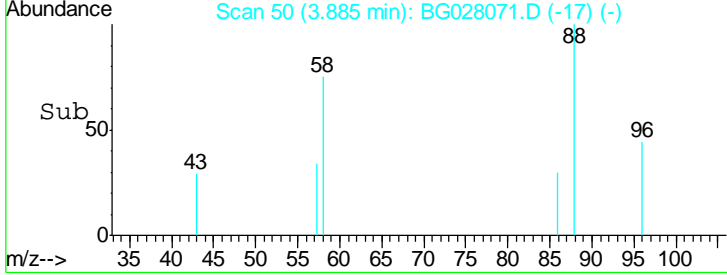
Instrument :
 BNA_G
 ClientSampled :
 MDL-S-ML-02



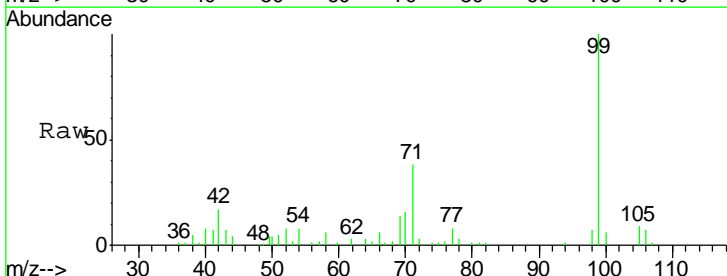
Tgt Ion: 88 Resp: 737

Ion	Ratio	Lower	Upper
88	100		
43	29.0	29.0	43.4
58	75.5	45.9	68.9#

Manual Integrations
APPROVED
 Sohil
 8/1/2017 2:55:11 PM

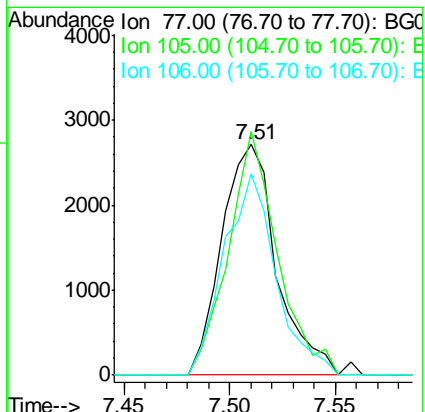
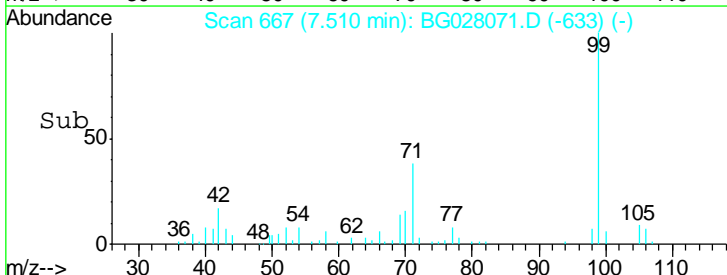


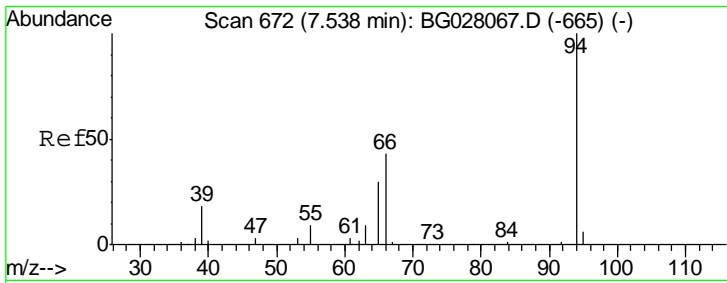
#4
 Benzaldehyde
 Concen: 4.357 ng/ul
 RT: 7.51 min Scan# 667
 Delta R.T. 0.00 min
 Lab File: BG028071.D
 Acq: 31 Jul 2017 15:27



Tgt Ion: 77 Resp: 4881

Ion	Ratio	Lower	Upper
77	100		
105	105.6	71.0	106.6
106	87.5	69.5	104.3





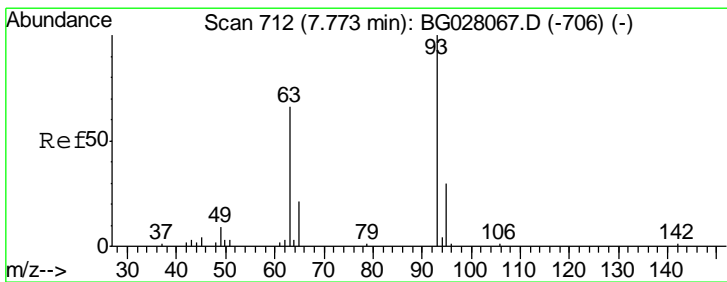
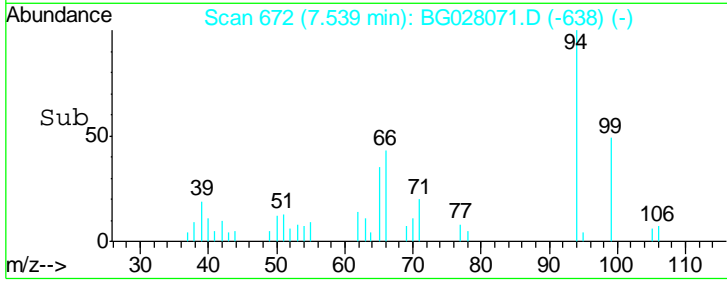
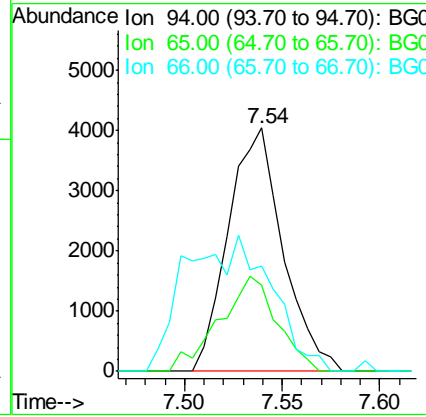
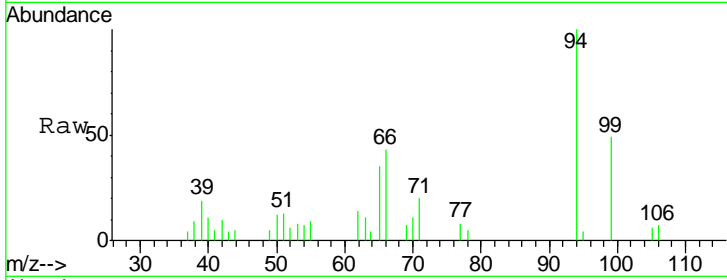
#6
 Phenol
 Concen: 3.571 ng/ul
 RT: 7.54 min Scan# 672
 Delta R.T. 0.00 min
 Lab File: BG028071.D
 Acq: 31 Jul 2017 15:27

Instrument :
 BNA_G
ClientSampled :
 MDL-S-ML-02

Tgt Ion	Resp	Lower	Upper
94	100		
65	35.2	23.0	34.6#
66	43.5	30.4	45.6

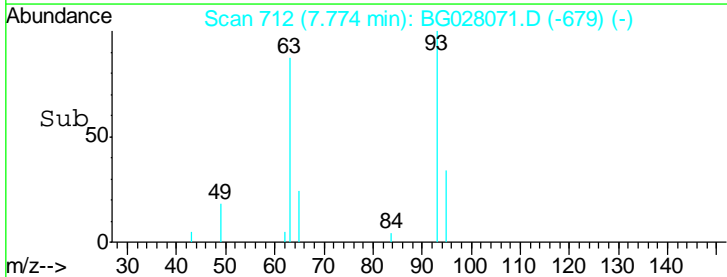
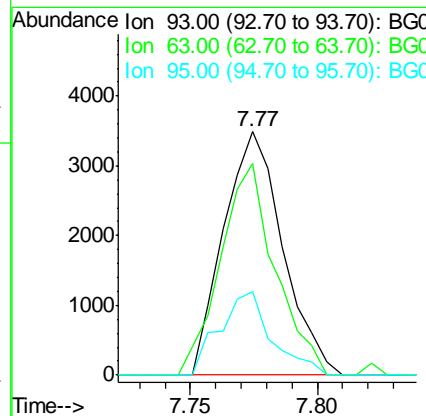
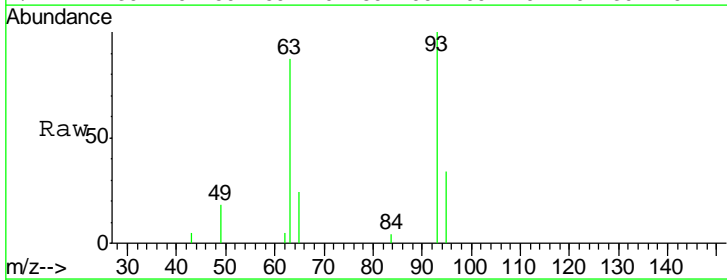
Manual Integrations
APPROVED

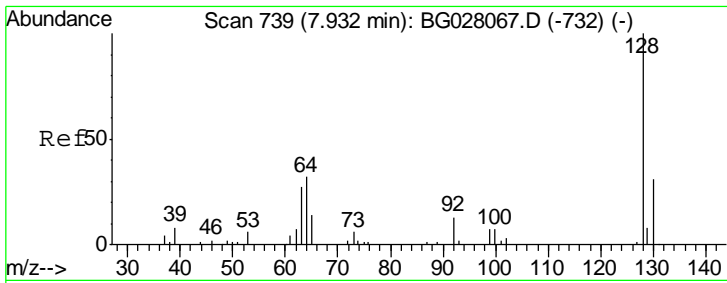
Sohil
 8/1/2017 2:55:11 PM



#8
 Bis(2-Chloroethyl)ether
 Concen: 3.634 ng/ul
 RT: 7.77 min Scan# 712
 Delta R.T. -0.00 min
 Lab File: BG028071.D
 Acq: 31 Jul 2017 15:27

Tgt Ion	Resp	Lower	Upper
93	100		
63	86.7	59.4	89.2
95	34.3	26.4	39.6





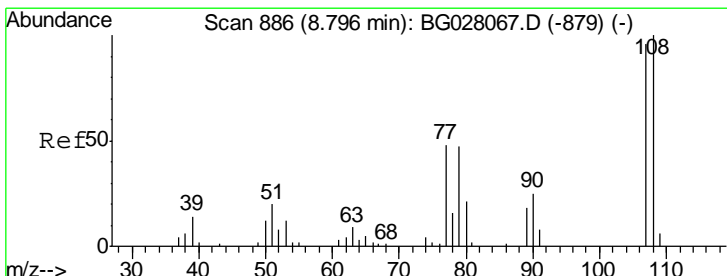
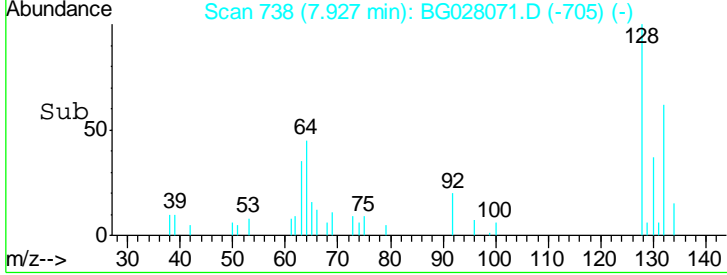
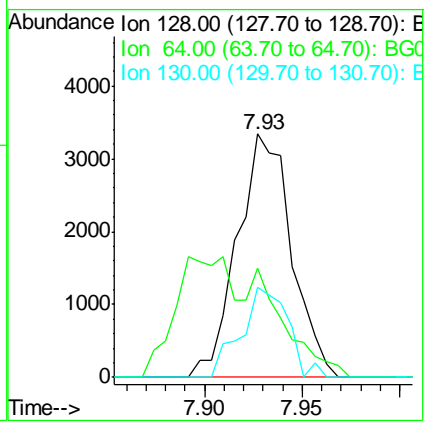
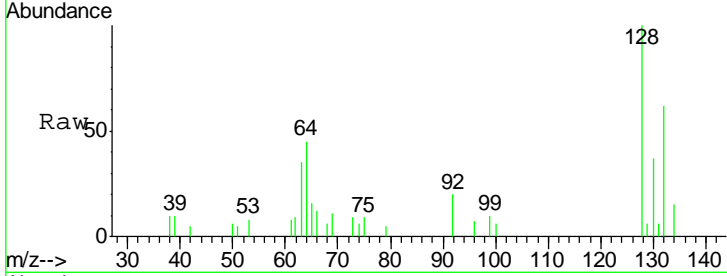
#10
 2-Chlorophenol
 Concen: 3.647 ng/ul
 RT: 7.93 min Scan# 738
 Delta R.T. -0.00 min
 Lab File: BG028071.D
 Acq: 31 Jul 2017 15:27

Instrument :
 BNA_G
ClientSampled :
 MDL-S-ML-02

Tgt Ion:128 Resp: 6412

Ion	Ratio	Lower	Upper
128	100		
64	44.9	39.8	59.6
130	37.1	25.8	38.8

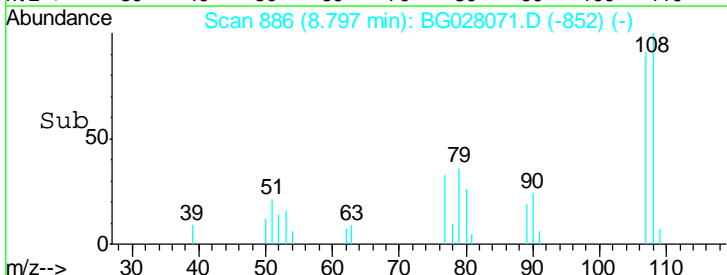
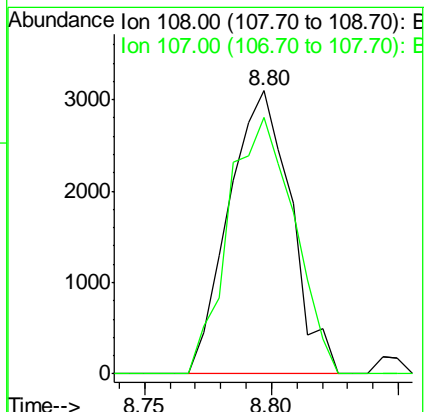
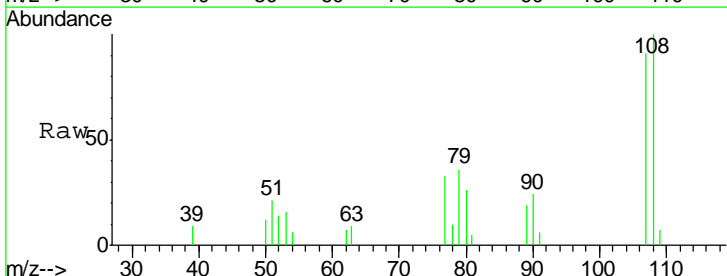
Manual Integrations
APPROVED
 Sohil
 8/1/2017 2:55:11 PM

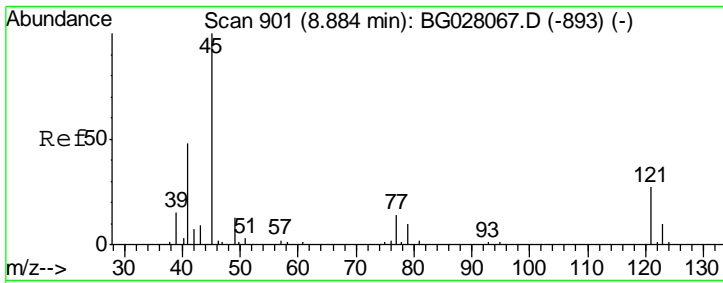


#11
 2-Methylphenol
 Concen: 3.082 ng/ul
 RT: 8.80 min Scan# 886
 Delta R.T. 0.00 min
 Lab File: BG028071.D
 Acq: 31 Jul 2017 15:27

Tgt Ion:108 Resp: 5275

Ion	Ratio	Lower	Upper
108	100		
107	90.8	74.1	111.1





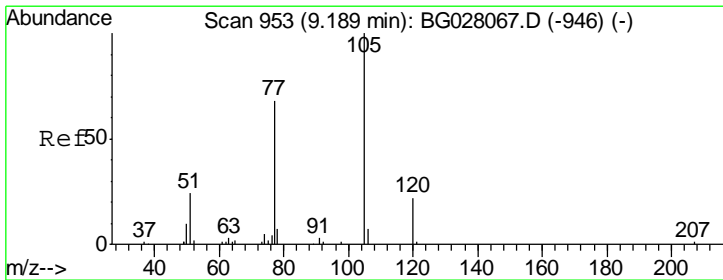
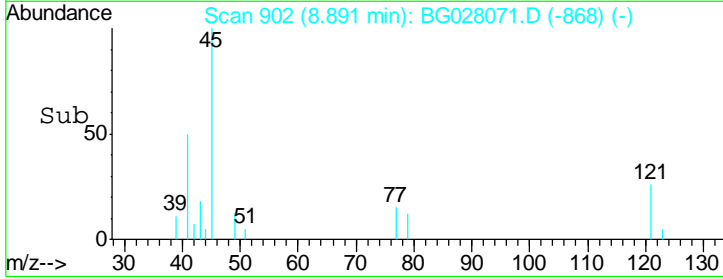
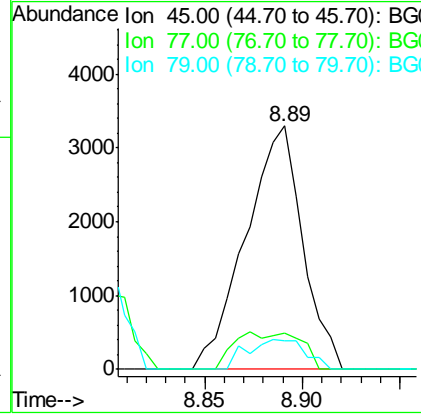
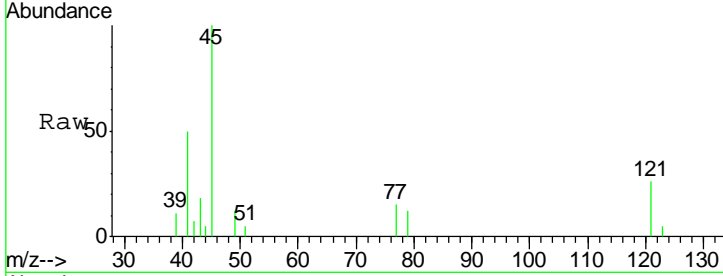
#12
 2,2'-oxybis(1-Chloropropane)
 Concen: 3.258 ng/ul
 RT: 8.89 min Scan# 902
 Delta R.T. 0.00 min
 Lab File: BG028071.D
 Acq: 31 Jul 2017 15:27

Instrument :
 BNA_G
ClientSampled :
 MDL-S-ML-02

Tgt Ion	Resp	Lower	Upper
45	6646		
45	100		
77	14.6	12.5	18.7
79	11.6	9.4	14.2

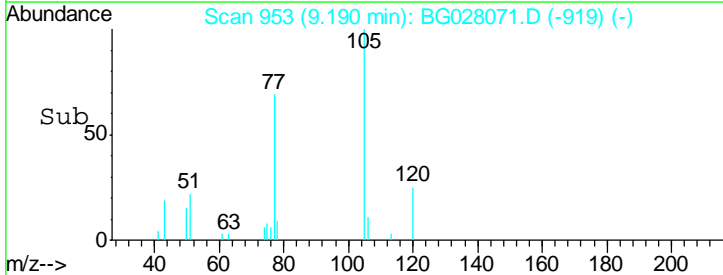
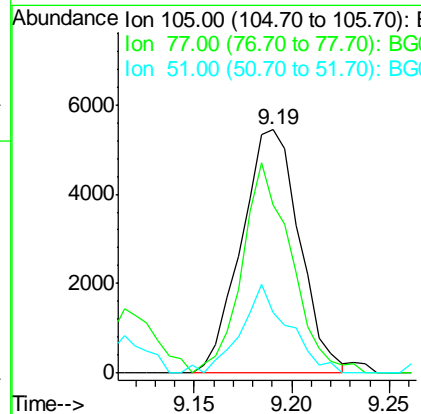
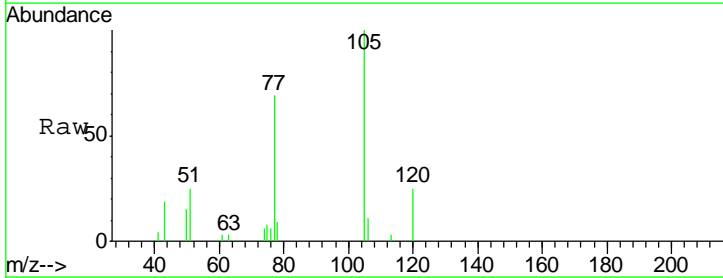
Manual Integrations
APPROVED

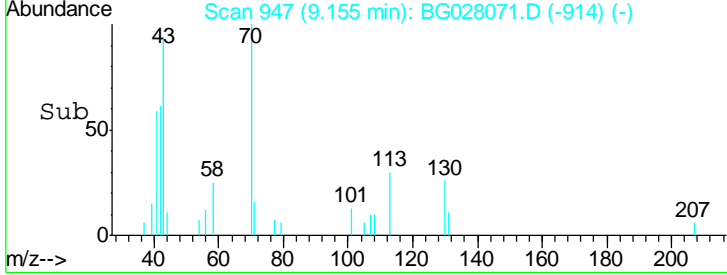
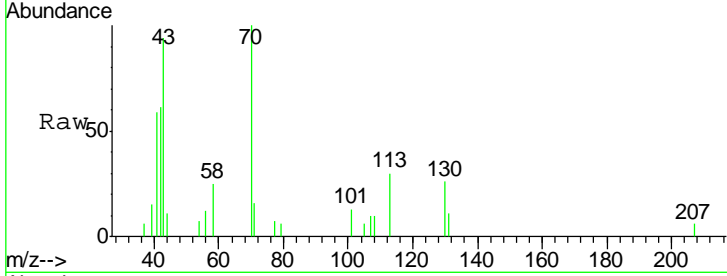
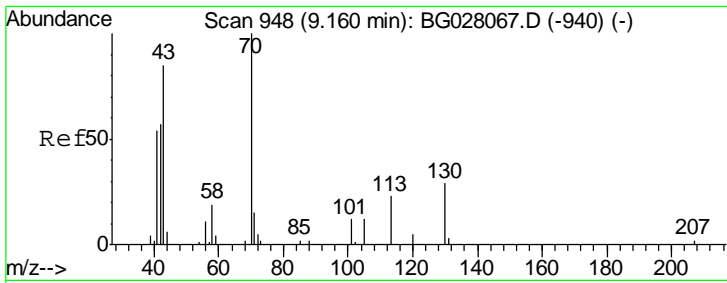
Sohil
 8/1/2017 2:55:11 PM



#14
 Acetophenone
 Concen: 3.811 ng/ul
 RT: 9.19 min Scan# 953
 Delta R.T. 0.00 min
 Lab File: BG028071.D
 Acq: 31 Jul 2017 15:27

Tgt Ion	Resp	Lower	Upper
105	11188		
105	100		
77	69.1	63.2	94.8
51	25.1	19.8	29.8



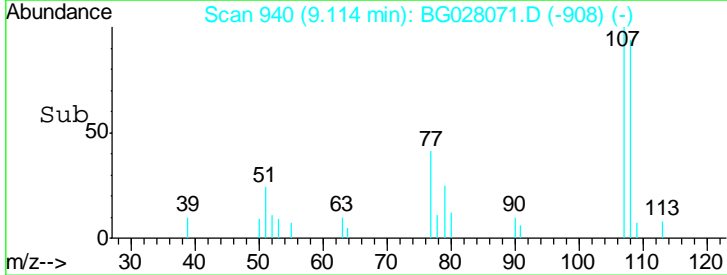
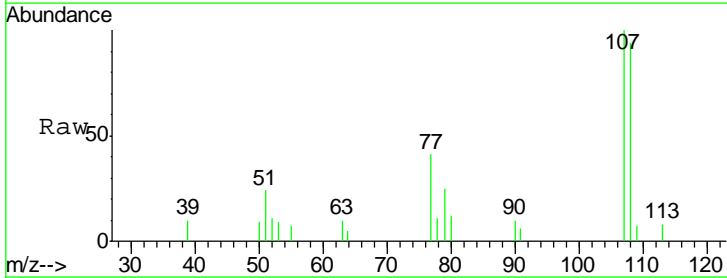
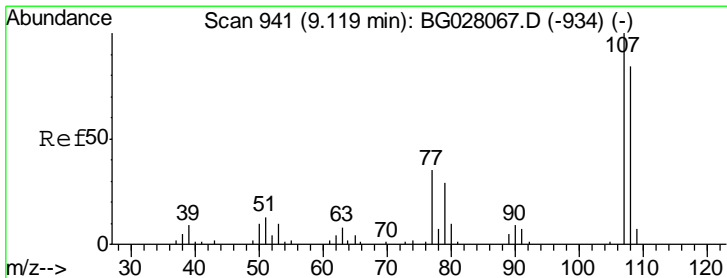
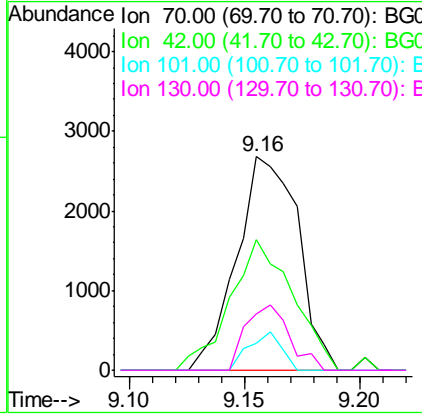


#15
 N-Nitroso-di-n-propylamine
 Concen: 3.592 ng/ul
 RT: 9.16 min Scan# 947
 Delta R.T. -0.00 min
 Lab File: BG028071.D
 Acq: 31 Jul 2017 15:27

Tgt Ion	Ratio	Lower	Upper
70	100		
42	60.9	40.2	60.4#
101	12.6	7.7	11.5#
130	26.3	17.8	26.6

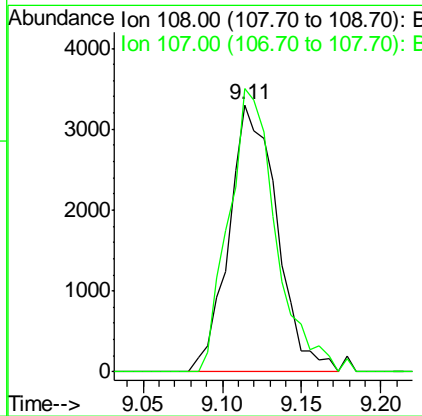
Instrument :
 BNA_G
ClientSampled :
 MDL-S-ML-02

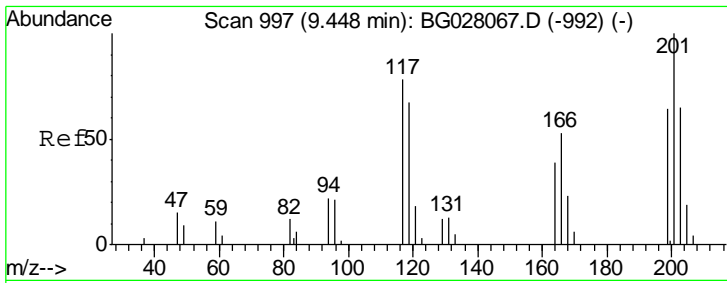
Manual Integrations
APPROVED
 Sohil
 8/1/2017 2:55:11 PM



#16
 4-Methylphenol
 Concen: 3.653 ng/ul
 RT: 9.11 min Scan# 940
 Delta R.T. -0.01 min
 Lab File: BG028071.D
 Acq: 31 Jul 2017 15:27

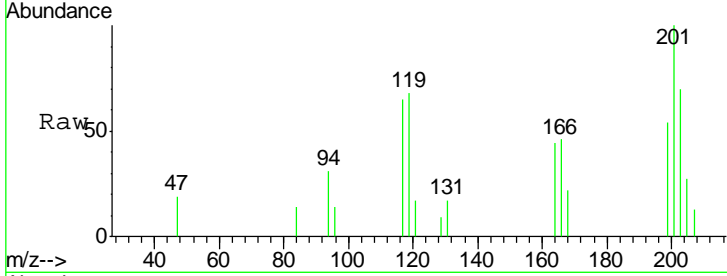
Tgt Ion	Ratio	Lower	Upper
108	100		
107	106.0	93.6	140.4





#17
 Hexachloroethane
 Concen: 3.415 ng/ul
 RT: 9.46 min Scan# 999
 Delta R.T. 0.00 min
 Lab File: BG028071.D
 Acq: 31 Jul 2017 15:27

Instrument :
 BNA_G
ClientSampled :
 MDL-S-ML-02

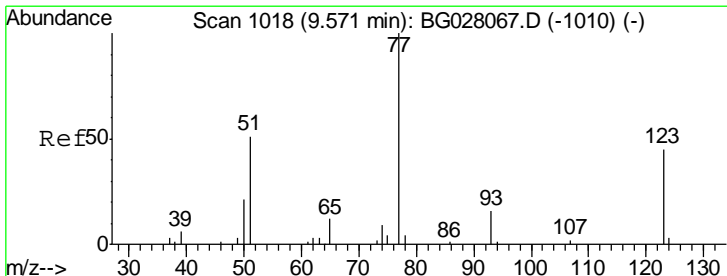
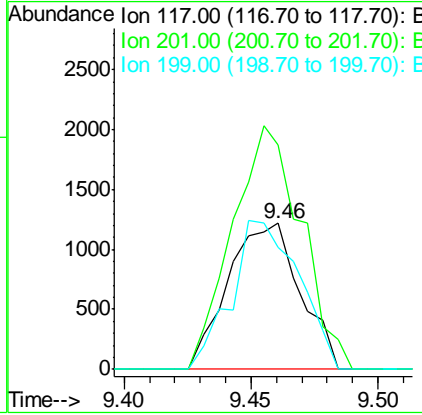
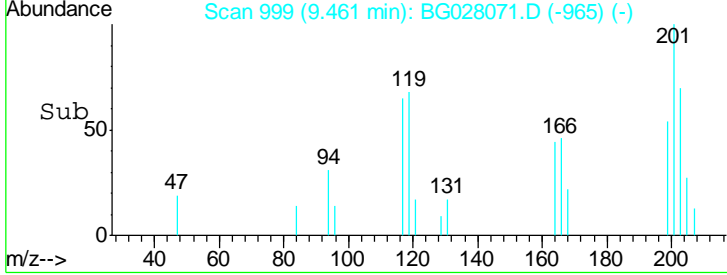


Tgt Ion: 117 Resp: 2402

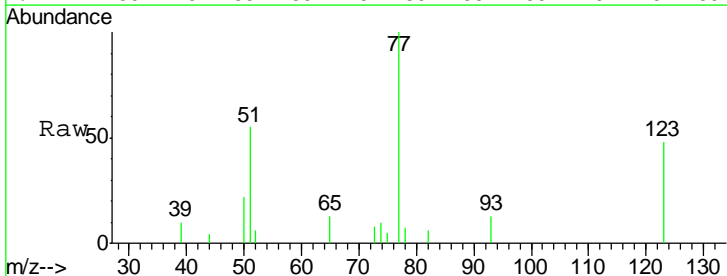
Ion	Ratio	Lower	Upper
117	100		
201	153.9	96.1	144.1#
199	83.6	59.7	89.5

Manual Integrations
APPROVED

Sohil
 8/1/2017 2:55:11 PM

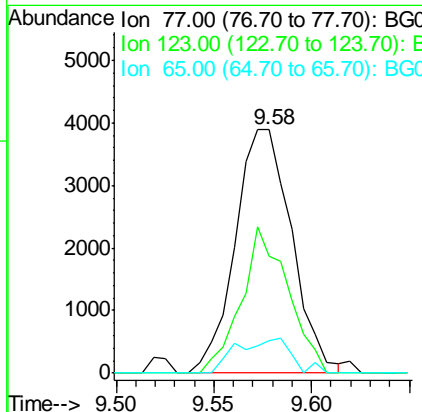
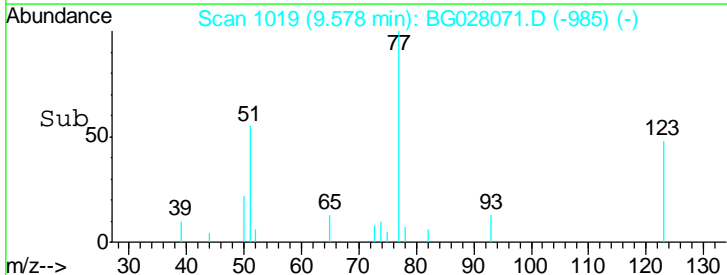


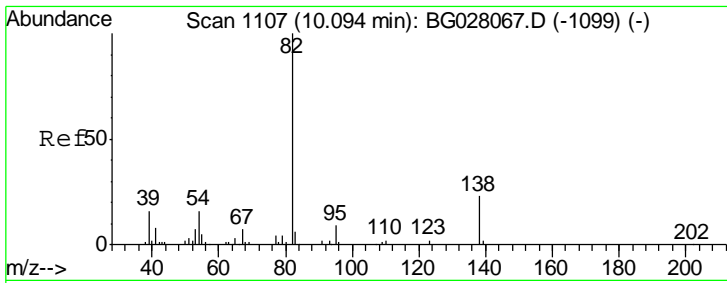
#20
 Nitrobenzene
 Concen: 3.769 ng/ul
 RT: 9.58 min Scan# 1019
 Delta R.T. 0.00 min
 Lab File: BG028071.D
 Acq: 31 Jul 2017 15:27



Tgt Ion: 77 Resp: 7778

Ion	Ratio	Lower	Upper
77	100		
123	48.2	31.8	47.8#
65	13.4	10.6	16.0





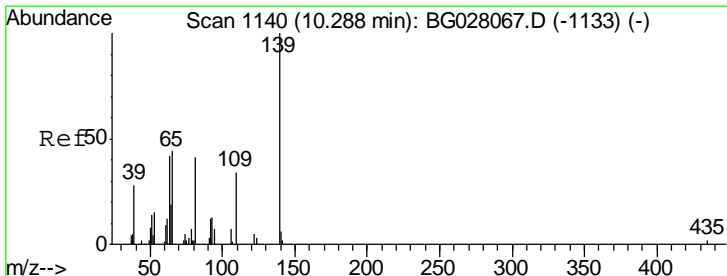
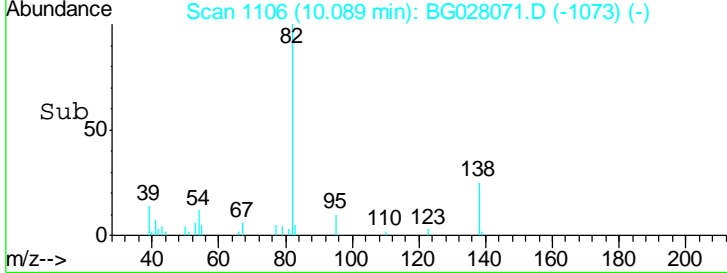
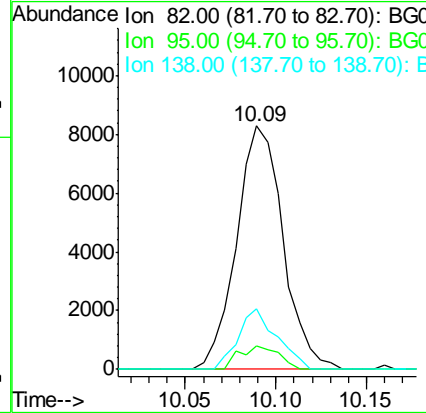
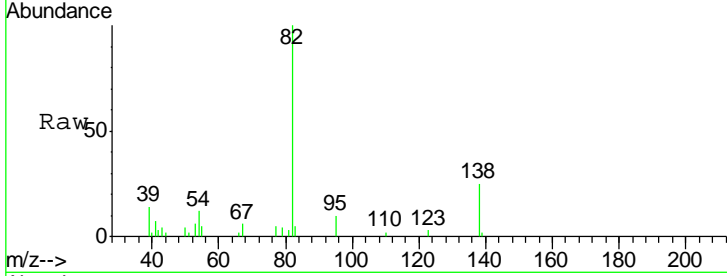
#21
 Isophorone
 Concen: 3.743 ng/ul
 RT: 10.09 min Scan# 1106
 Delta R.T. -0.00 min
 Lab File: BG028071.D
 Acq: 31 Jul 2017 15:27

Instrument :
 BNA_G
 ClientSampled :
 MDL-S-ML-02

Tgt Ion	Resp	Lower	Upper
82	14763		
95	9.6	6.1	9.1#
138	24.8	13.5	20.3#

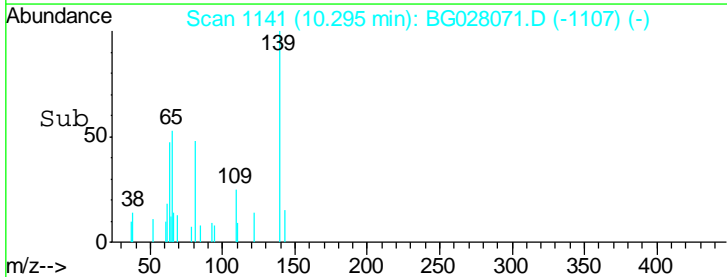
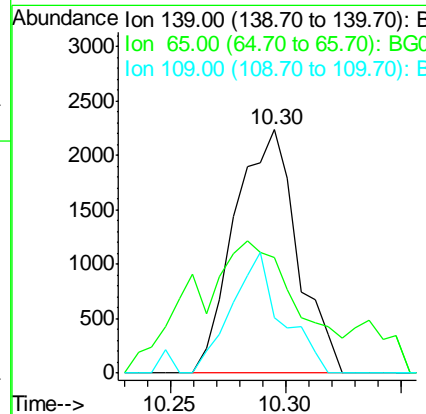
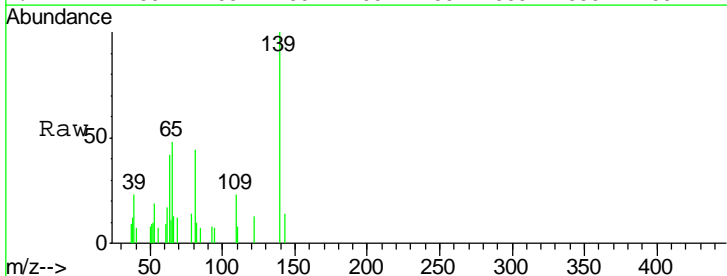
Manual Integrations
 APPROVED

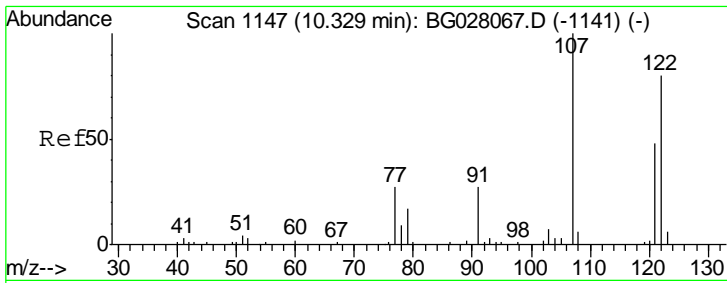
Sohil
 8/1/2017 2:55:11 PM



#23
 2-Nitrophenol
 Concen: 3.573 ng/ul
 RT: 10.30 min Scan# 1141
 Delta R.T. 0.00 min
 Lab File: BG028071.D
 Acq: 31 Jul 2017 15:27

Tgt Ion	Resp	Lower	Upper
139	4214		
65	47.7	45.3	67.9
109	22.9	27.7	41.5#





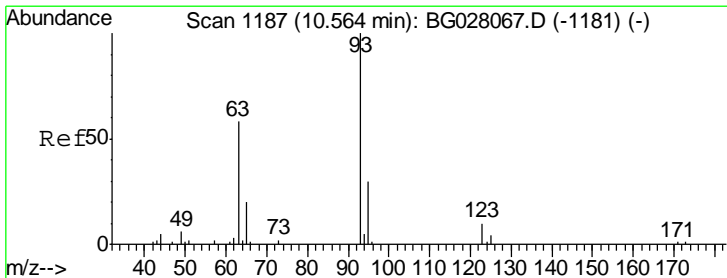
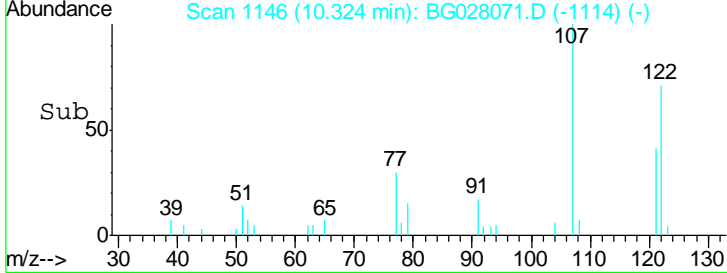
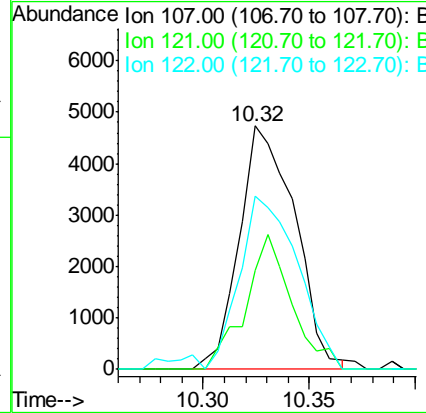
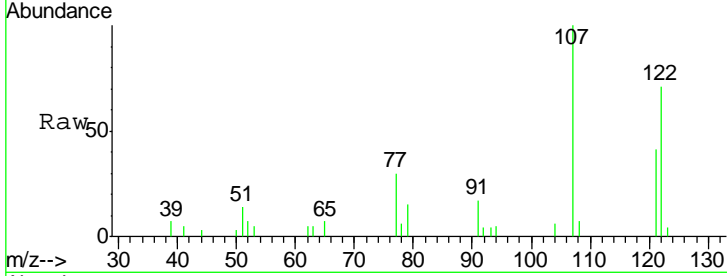
#24
 2,4-Dimethylphenol
 Concen: 3.657 ng/ul
 RT: 10.32 min Scan# 1146
 Delta R.T. -0.01 min
 Lab File: BG028071.D
 Acq: 31 Jul 2017 15:27

Instrument :
 BNA_G
 ClientSampled :
 MDL-S-ML-02

Tgt Ion	Resp	Lower	Upper
107	100		
121	40.8	38.1	57.1
122	71.0	63.8	95.8

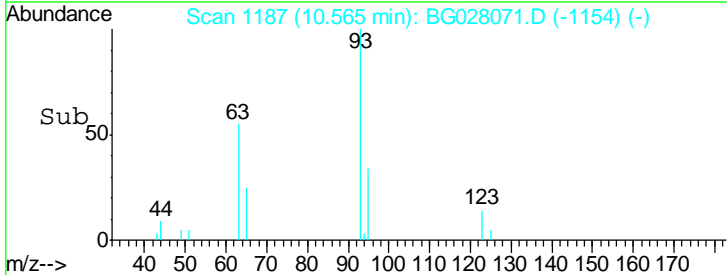
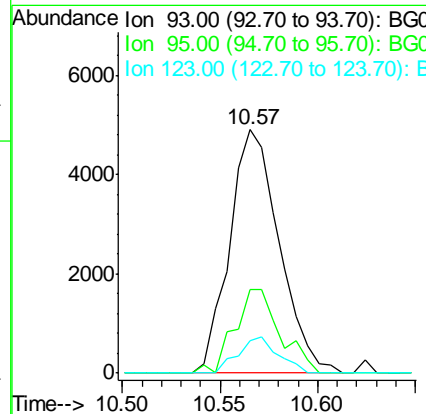
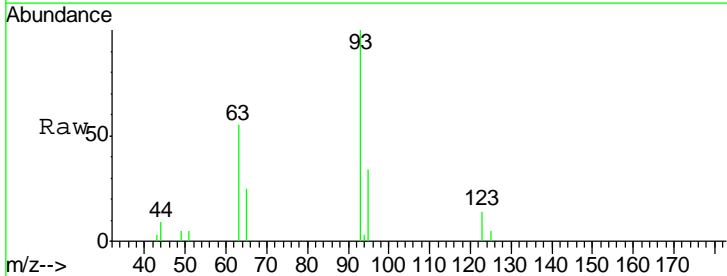
Manual Integrations
 APPROVED

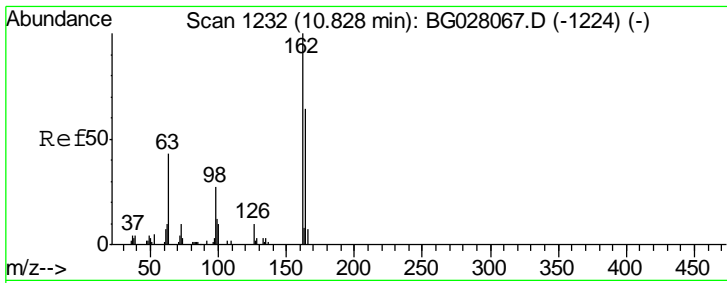
Sohil
 8/1/2017 2:55:11 PM



#25
 Bis(2-Chloroethoxy)methane
 Concen: 3.769 ng/ul
 RT: 10.57 min Scan# 1187
 Delta R.T. -0.00 min
 Lab File: BG028071.D
 Acq: 31 Jul 2017 15:27

Tgt Ion	Resp	Lower	Upper
93	100		
95	34.2	24.7	37.1
123	13.5	8.2	12.2#





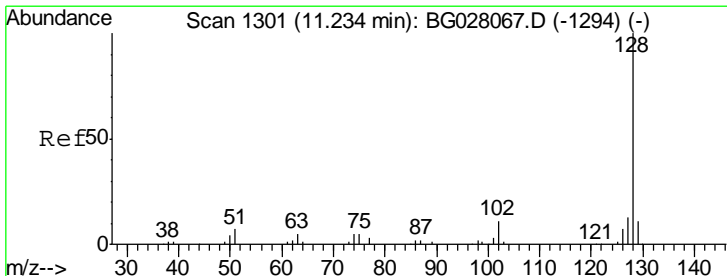
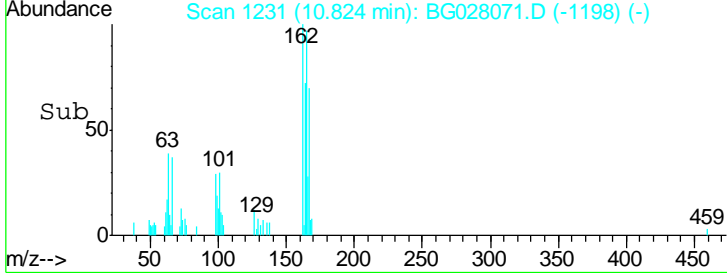
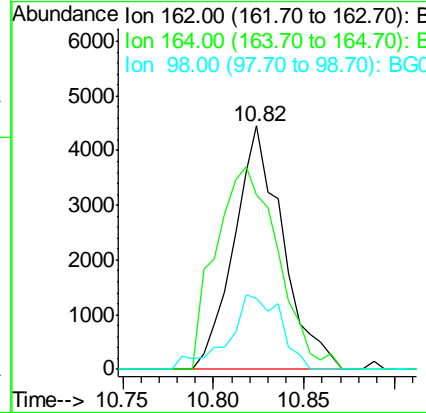
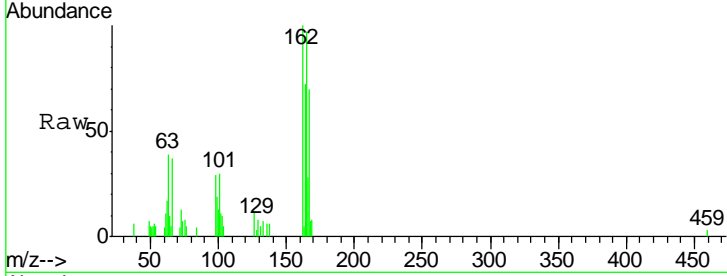
#27
 2,4-Dichlorophenol
 Concen: 3.598 ng/ul
 RT: 10.82 min Scan# 1231
 Delta R.T. -0.00 min
 Lab File: BG028071.D
 Acq: 31 Jul 2017 15:27

Instrument :
 BNA_G
 ClientSampled :
 MDL-S-ML-02

Tgt Ion	Resp	Lower	Upper
162	100		
164	71.9	52.0	78.0
98	29.1	26.6	39.8

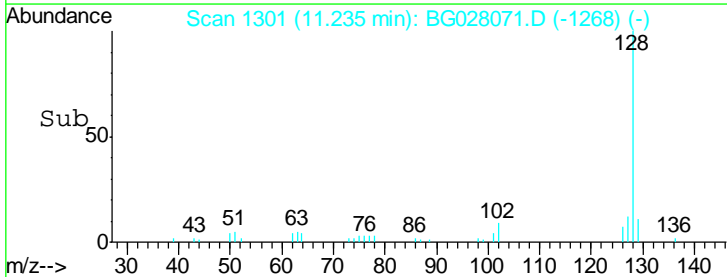
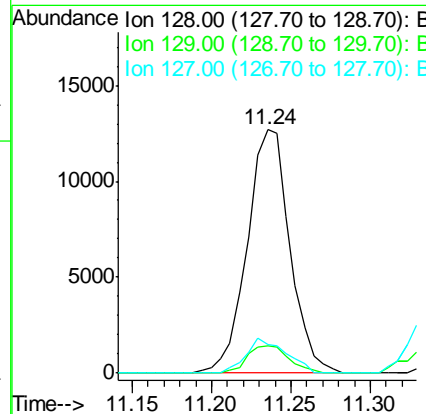
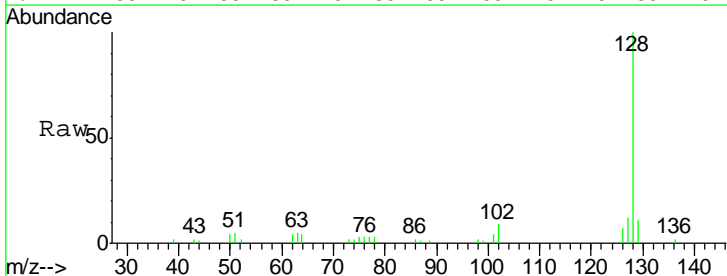
Manual Integrations
 APPROVED

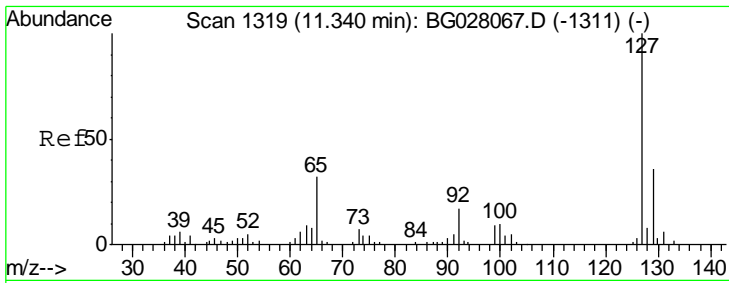
Sohil
 8/1/2017 2:55:11 PM



#28
 Naphthalene
 Concen: 3.824 ng/ul
 RT: 11.24 min Scan# 1301
 Delta R.T. -0.00 min
 Lab File: BG028071.D
 Acq: 31 Jul 2017 15:27

Tgt Ion	Resp	Lower	Upper
128	100		
129	11.4	8.3	12.5
127	11.5	10.8	16.2





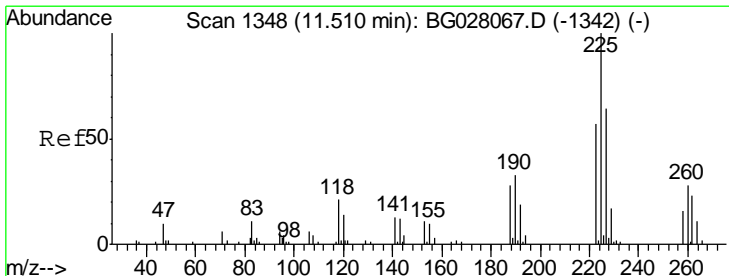
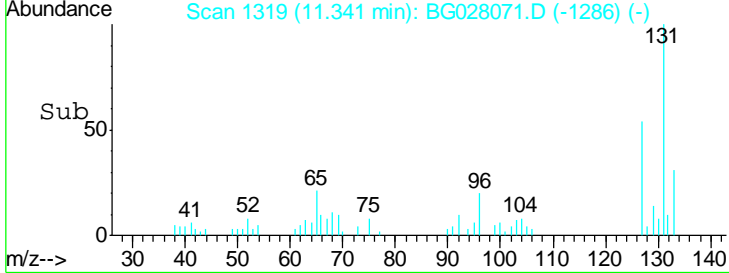
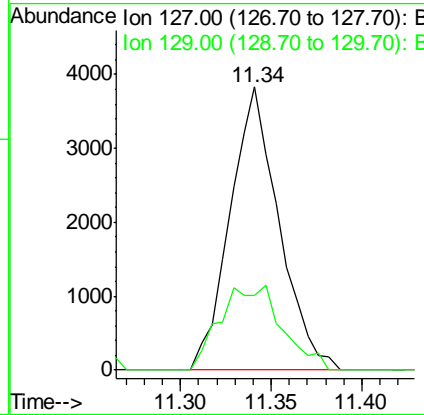
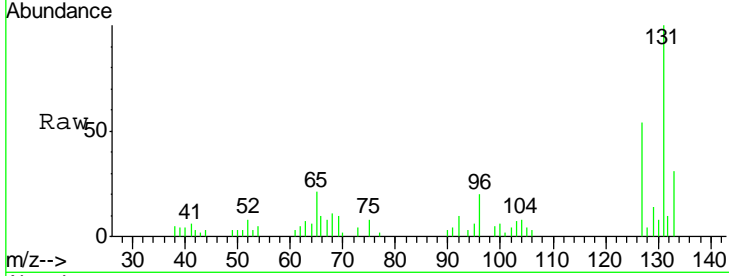
#30
 4-Chloroaniline
 Concen: 3.094 ng/ul
 RT: 11.34 min Scan# 1319
 Delta R.T. -0.00 min
 Lab File: BG028071.D
 Acq: 31 Jul 2017 15:27

Instrument :
 BNA_G
 ClientSampled :
 MDL-S-ML-02

Tgt Ion	Resp	Lower	Upper
127	100		
129	26.5	24.6	37.0

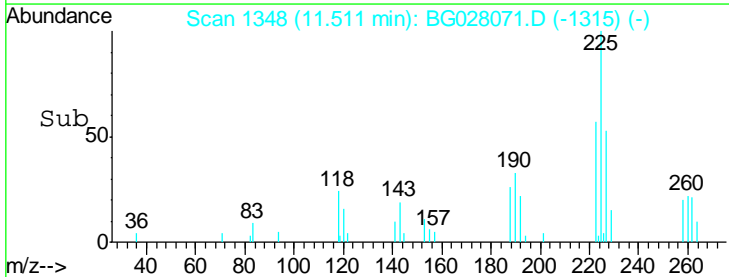
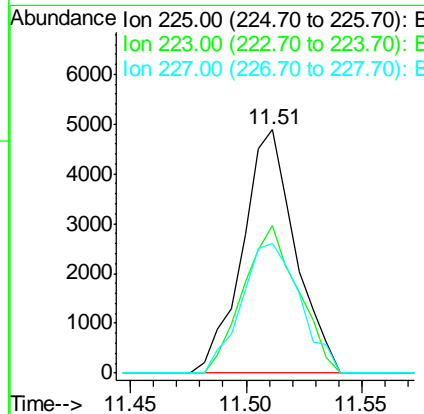
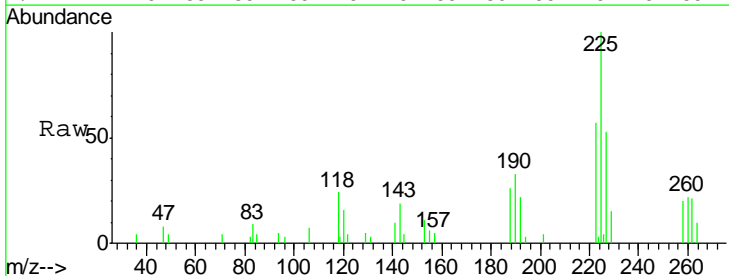
Manual Integrations
 APPROVED

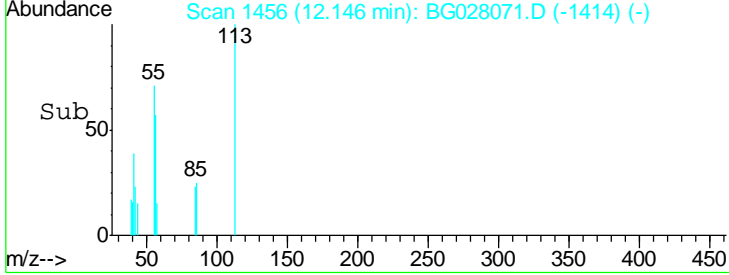
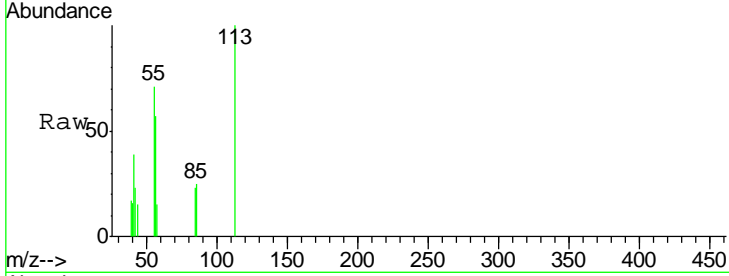
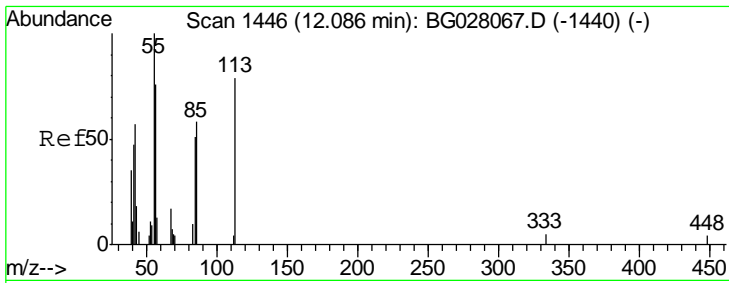
Sohil
 8/1/2017 2:55:11 PM



#31
 Hexachlorobutadiene
 Concen: 3.918 ng/ul
 RT: 11.51 min Scan# 1348
 Delta R.T. -0.00 min
 Lab File: BG028071.D
 Acq: 31 Jul 2017 15:27

Tgt Ion	Resp	Lower	Upper
225	100		
223	60.5	48.1	72.1
227	53.2	52.1	78.1



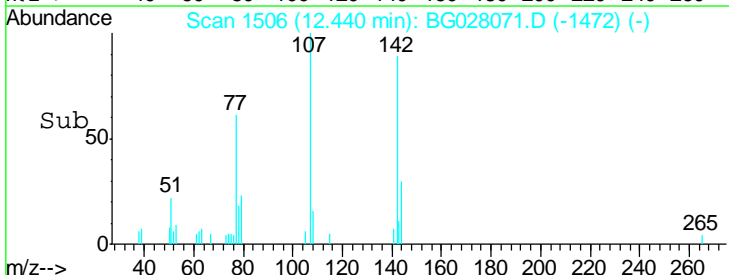
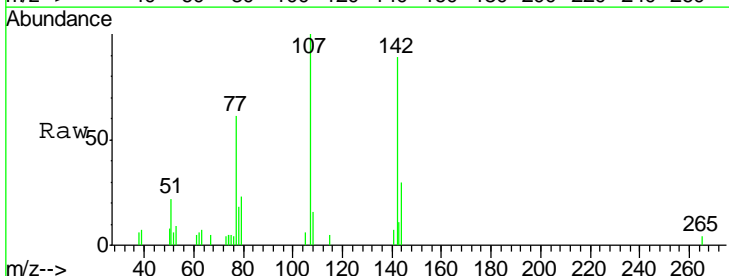
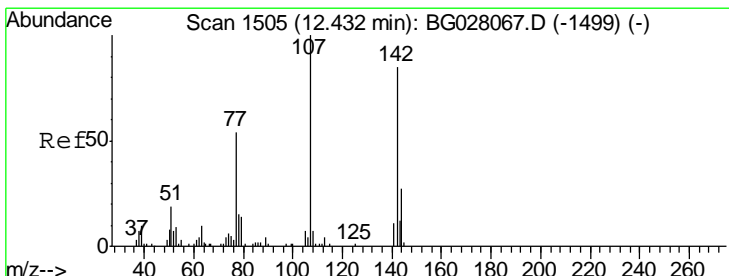
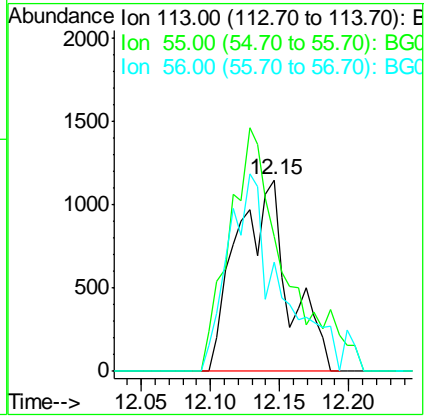


#32
 Caprolactam
 Concen: 4.118 ng/ul m
 RT: 12.15 min Scan# 1456
 Delta R.T. 0.05 min
 Lab File: BG028071.D
 Acq: 31 Jul 2017 15:27

Tgt Ion	Ratio	Lower	Upper
113	100		
55	70.7	131.7	197.5#
56	57.0	92.7	139.1#

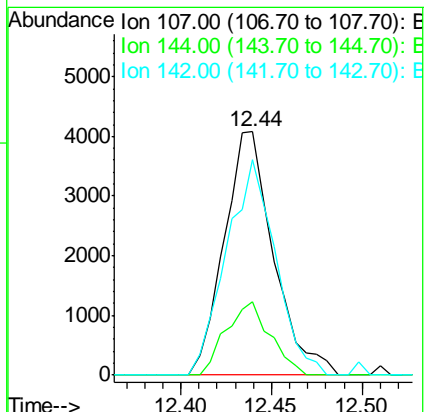
Instrument :
 BNA_G
 ClientSampled :
 MDL-S-ML-02

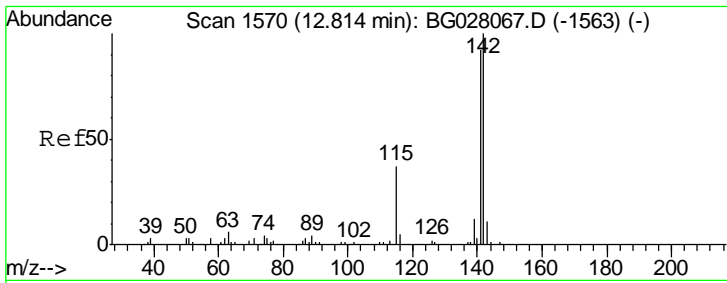
Manual Integrations
APPROVED
 Sohil
 8/1/2017 2:55:11 PM



#33
 4-Chloro-3-methylphenol
 Concen: 3.451 ng/ul
 RT: 12.44 min Scan# 1506
 Delta R.T. 0.00 min
 Lab File: BG028071.D
 Acq: 31 Jul 2017 15:27

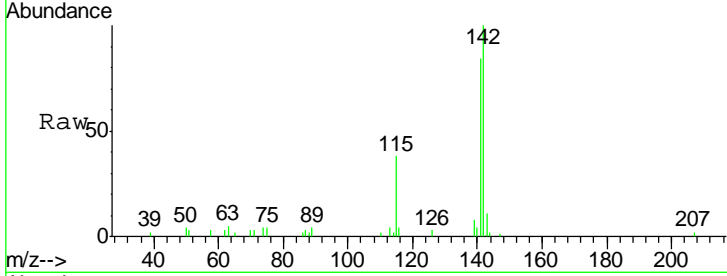
Tgt Ion	Ratio	Lower	Upper
107	100		
144	29.9	21.1	31.7
142	88.5	60.1	90.1





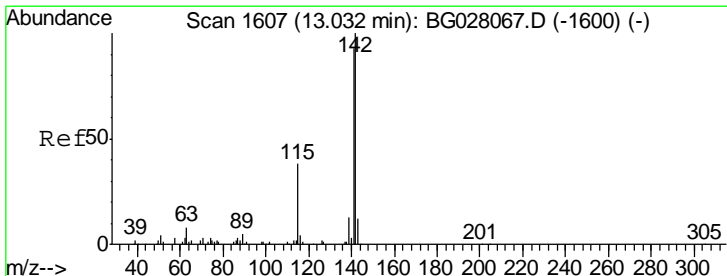
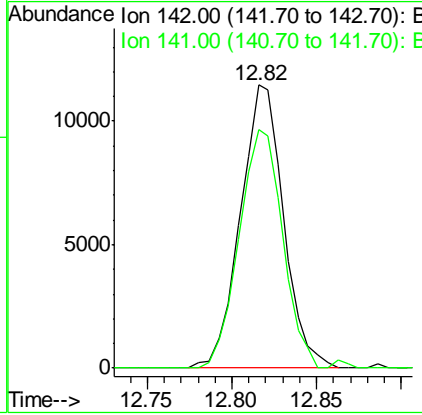
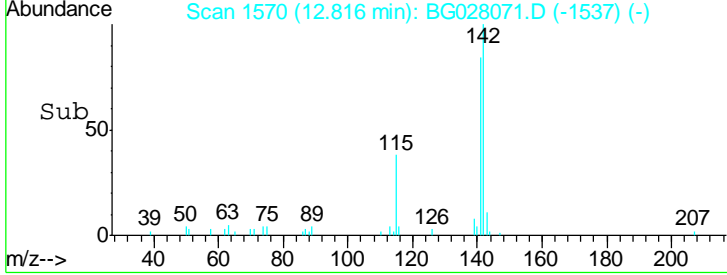
#34
 2-Methylnaphthalene
 Concen: 3.801 ng/ul
 RT: 12.82 min Scan# 1570
 Delta R.T. -0.00 min
 Lab File: BG028071.D
 Acq: 31 Jul 2017 15:27

Instrument :
 BNA_G
 ClientSampled :
 MDL-S-ML-02

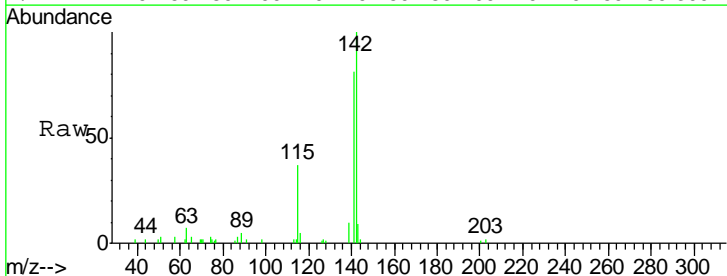


Tgt Ion:142 Resp: 20357
 Ion Ratio Lower Upper
 142 100
 141 84.3 71.4 107.2

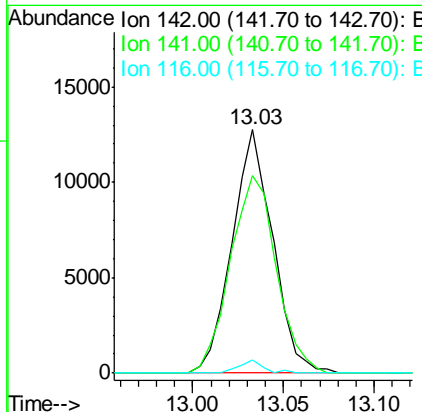
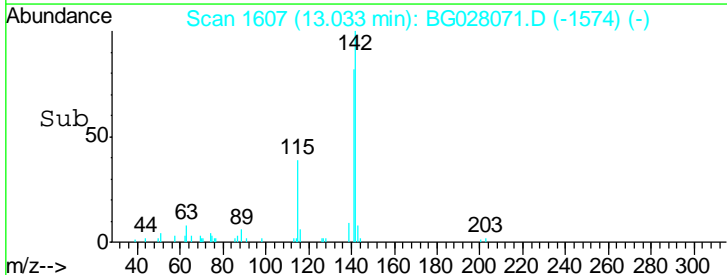
Manual Integrations
APPROVED
 Sohil
 8/1/2017 2:55:11 PM

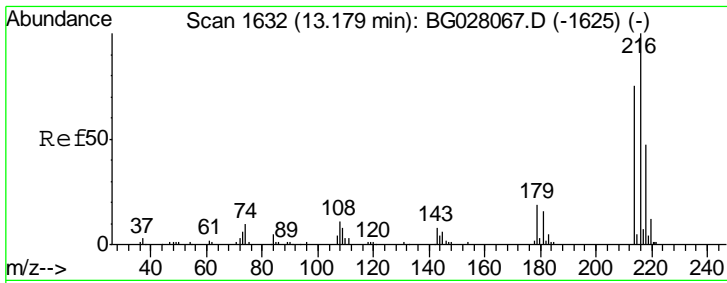


#35
 1-Methylnaphthalene
 Concen: 3.833 ng/ul
 RT: 13.03 min Scan# 1607
 Delta R.T. -0.00 min
 Lab File: BG028071.D
 Acq: 31 Jul 2017 15:27



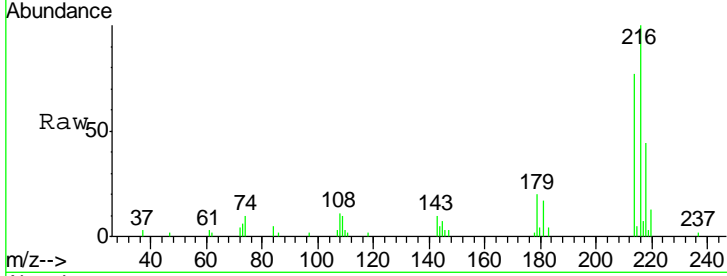
Tgt Ion:142 Resp: 19908
 Ion Ratio Lower Upper
 142 100
 141 80.9 76.6 115.0
 116 5.3 3.6 5.4





#37
 1,2,4,5-Tetrachlorobenzene
 Concen: 3.656 ng/ul
 RT: 13.18 min Scan# 1632
 Delta R.T. 0.00 min
 Lab File: BG028071.D
 Acq: 31 Jul 2017 15:27

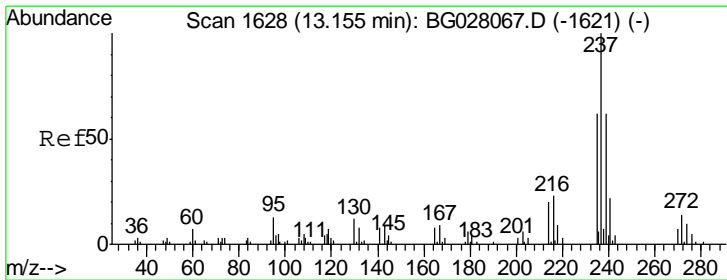
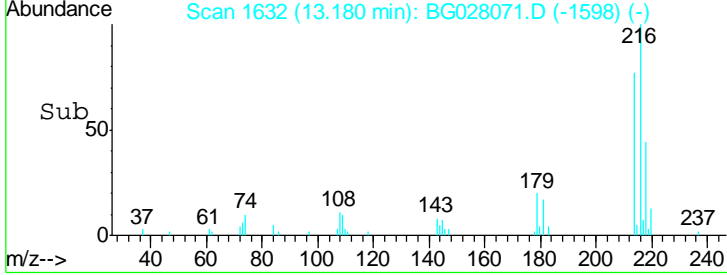
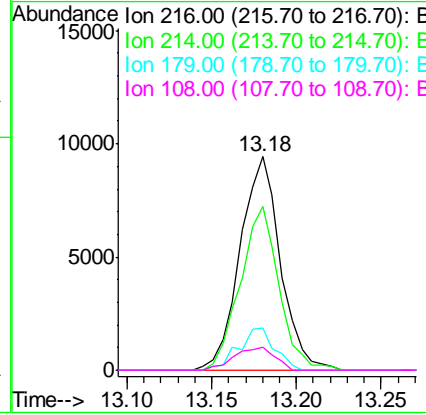
Instrument :
 BNA_G
 ClientSampled :
 MDL-S-ML-02



Tgt Ion	Resp	Lower	Upper
216	15681		
214	76.9	64.1	96.1
179	20.0	14.5	21.7
108	11.0	10.4	15.6

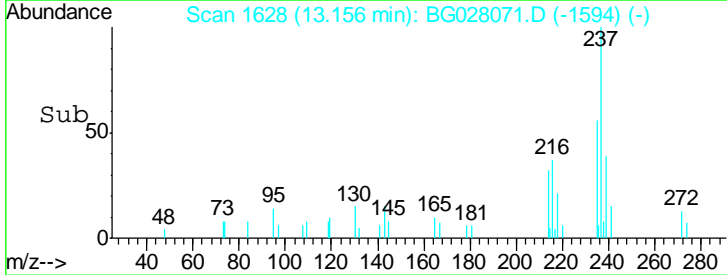
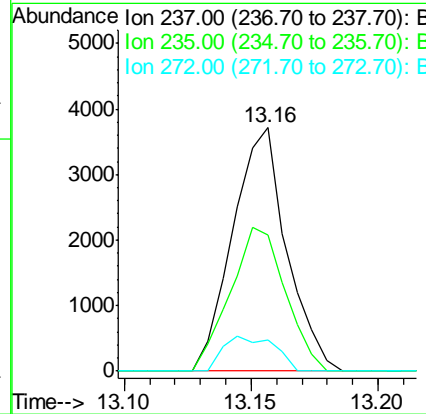
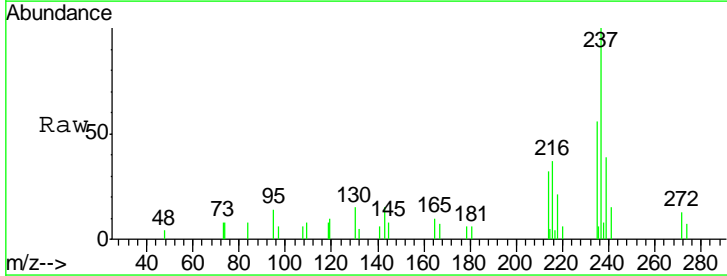
Manual Integrations
 APPROVED

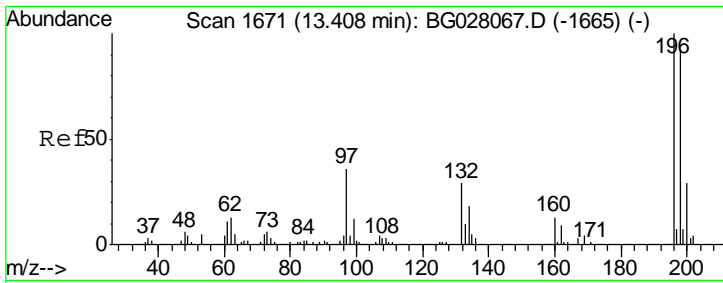
Sohil
 8/1/2017 2:55:11 PM



#38
 Hexachlorocyclopentadiene
 Concen: 2.186 ng/ul
 RT: 13.16 min Scan# 1628
 Delta R.T. 0.00 min
 Lab File: BG028071.D
 Acq: 31 Jul 2017 15:27

Tgt Ion	Resp	Lower	Upper
237	5497		
235	61.5	49.5	74.3
272	12.9	8.6	12.8#



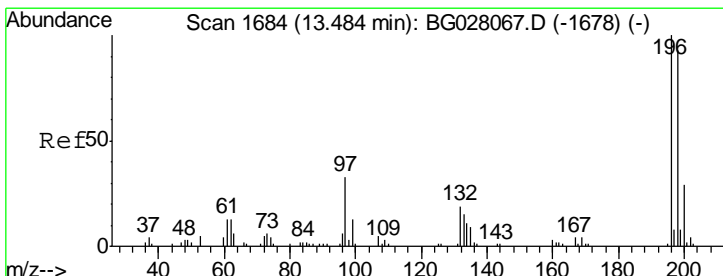
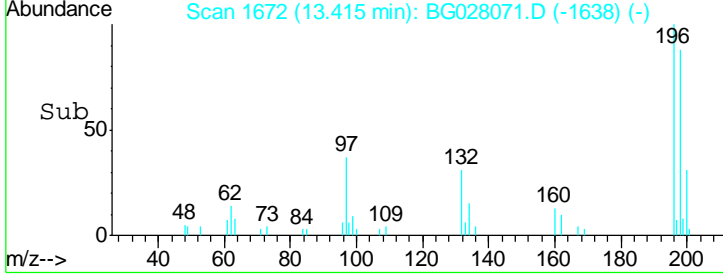
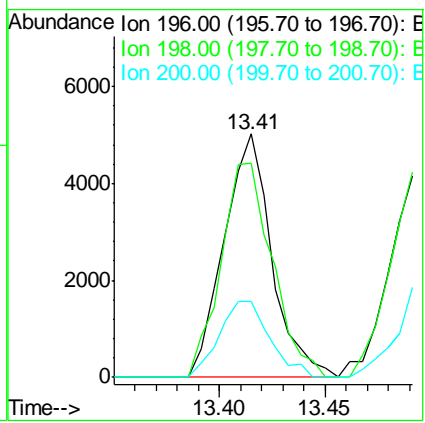
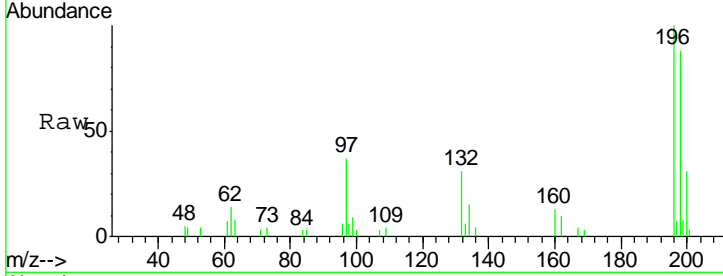


#39
 2,4,6-Trichlorophenol
 Concen: 3.067 ng/ul
 RT: 13.41 min Scan# 1672
 Delta R.T. 0.00 min
 Lab File: BG028071.D
 Acq: 31 Jul 2017 15:27

Instrument :
 BNA_G
ClientSampled :
 MDL-S-ML-02

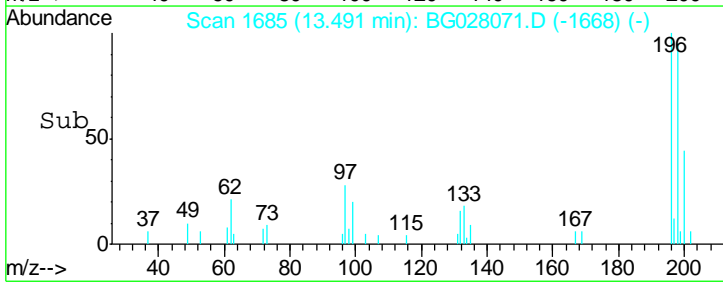
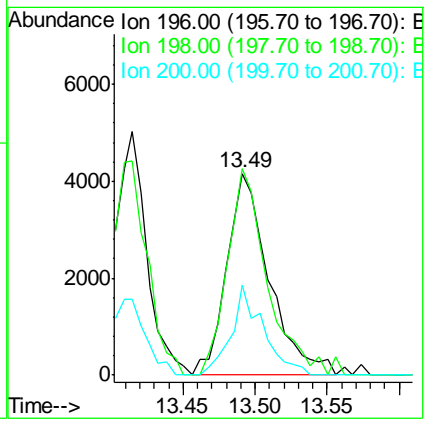
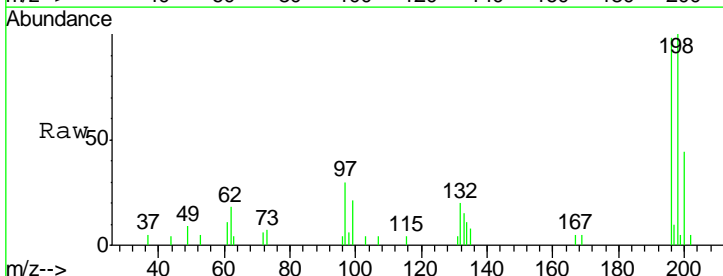
Tgt Ion	Resp	Lower	Upper
196	100		
198	88.0	75.9	113.9
200	31.3	25.8	38.6

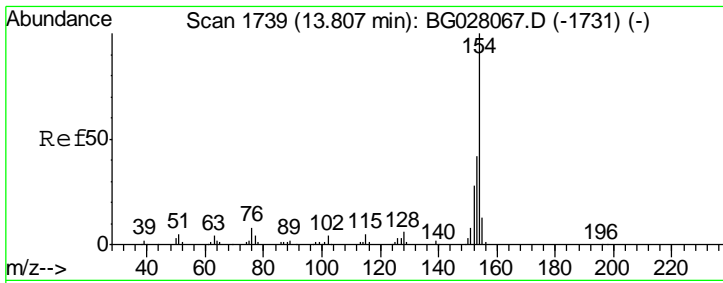
Manual Integrations
APPROVED
 Sohil
 8/1/2017 2:55:11 PM



#40
 2,4,5-Trichlorophenol
 Concen: 3.148 ng/ul m
 RT: 13.49 min Scan# 1685
 Delta R.T. 0.00 min
 Lab File: BG028071.D
 Acq: 31 Jul 2017 15:27

Tgt Ion	Resp	Lower	Upper
196	100		
198	101.9	74.7	112.1
200	44.5	25.4	38.0#



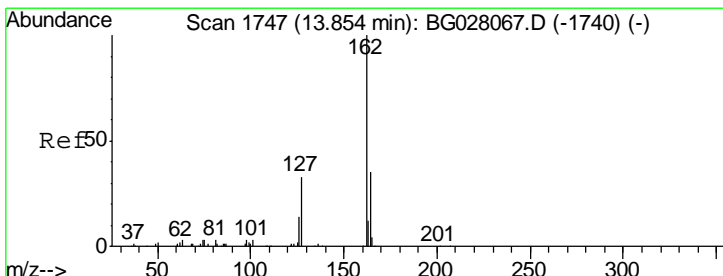
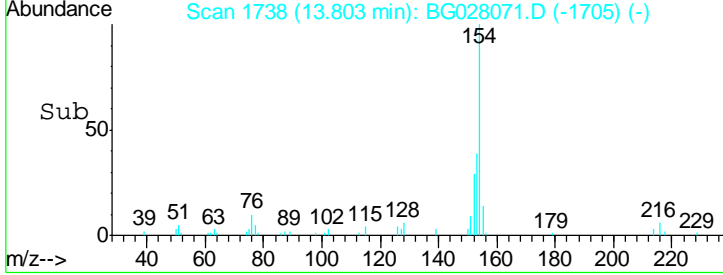
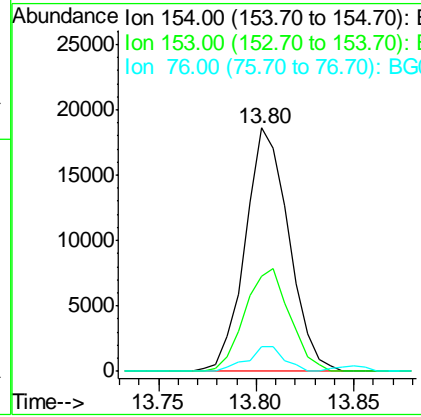
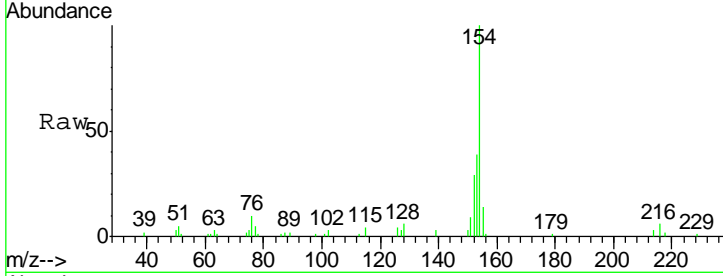


#41
 1,1'-Biphenyl
 Concen: 3.549 ng/ul
 RT: 13.80 min Scan# 1738
 Delta R.T. -0.00 min
 Lab File: BG028071.D
 Acq: 31 Jul 2017 15:27

Instrument : BNA_G
 ClientSampled : MDL-S-ML-02

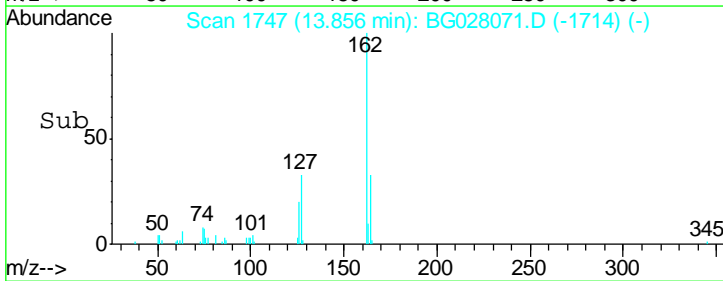
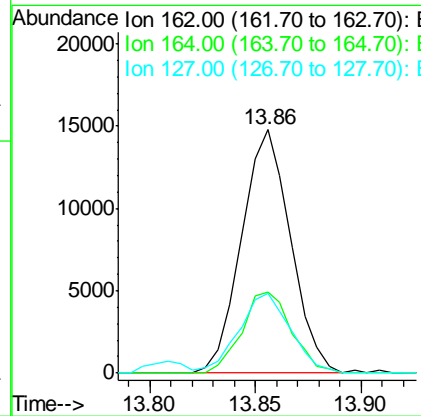
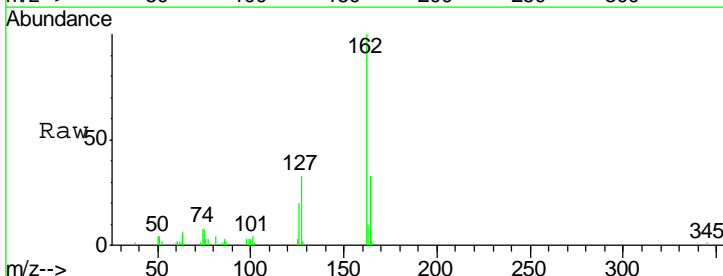
Tgt Ion	Resp	Lower	Upper
154	28715		
153	38.9	34.0	51.0
76	9.9	8.4	12.6

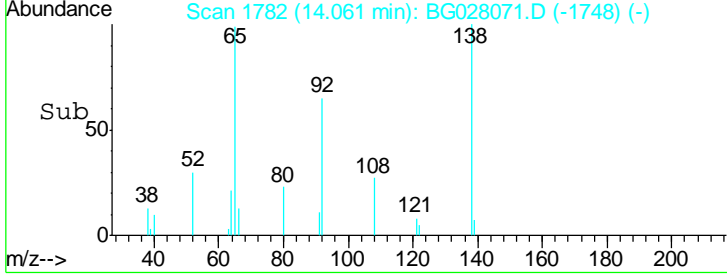
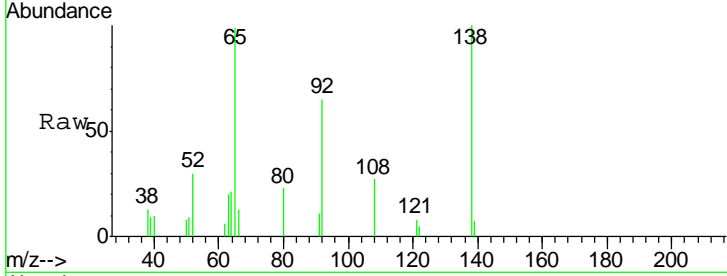
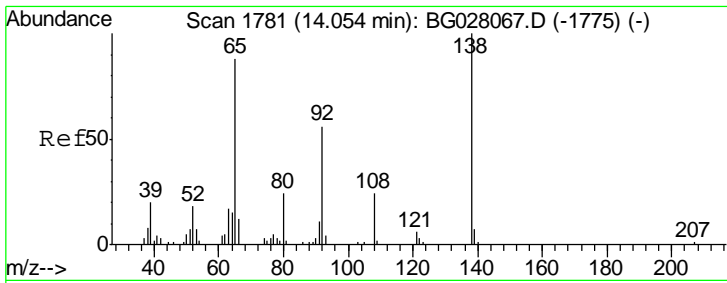
Manual Integrations
APPROVED
 Sohil
 8/1/2017 2:55:11 PM



#42
 2-Chloronaphthalene
 Concen: 3.637 ng/ul
 RT: 13.86 min Scan# 1747
 Delta R.T. -0.00 min
 Lab File: BG028071.D
 Acq: 31 Jul 2017 15:27

Tgt Ion	Resp	Lower	Upper
162	23735		
164	33.5	26.2	39.4
127	32.6	29.5	44.3



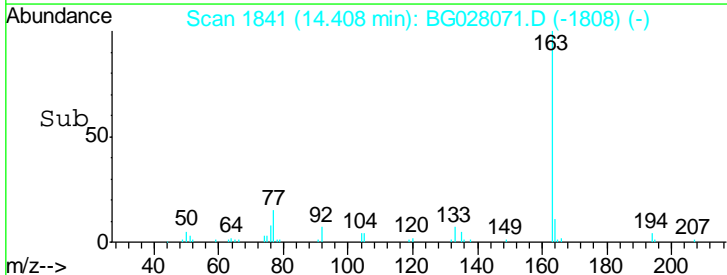
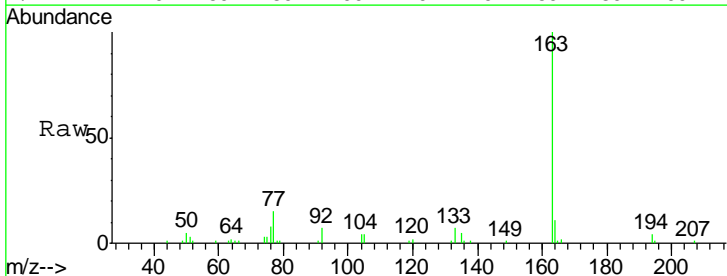
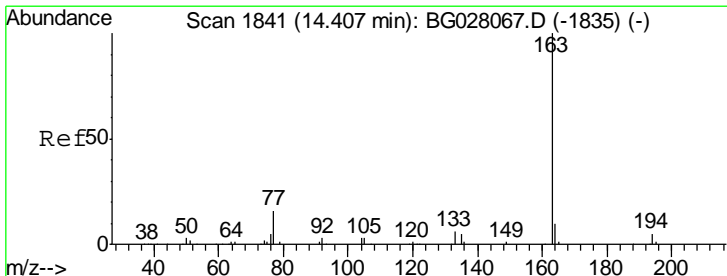
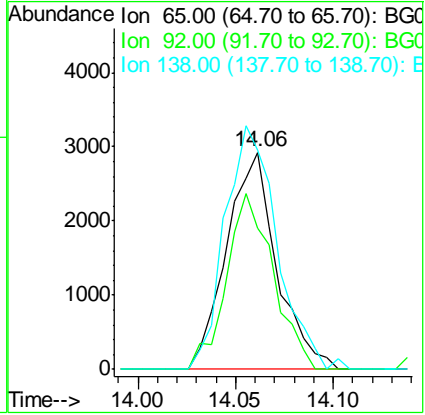


#43
 2-Nitroaniline
 Concen: 3.374 ng/ul
 RT: 14.06 min Scan# 1782
 Delta R.T. 0.00 min
 Lab File: BG028071.D
 Acq: 31 Jul 2017 15:27

Tgt Ion	Resp	Lower	Upper
65	100		
92	65.3	57.0	85.4
138	101.2	87.2	130.8

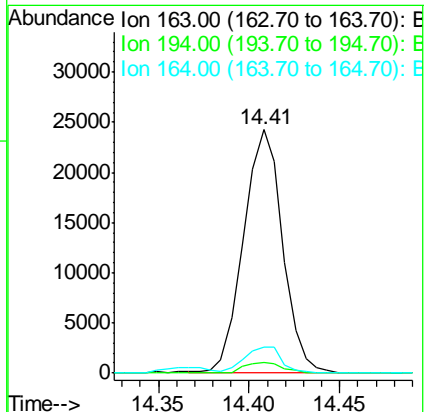
Instrument : BNA_G
 Client Sampled : MDL-S-ML-02

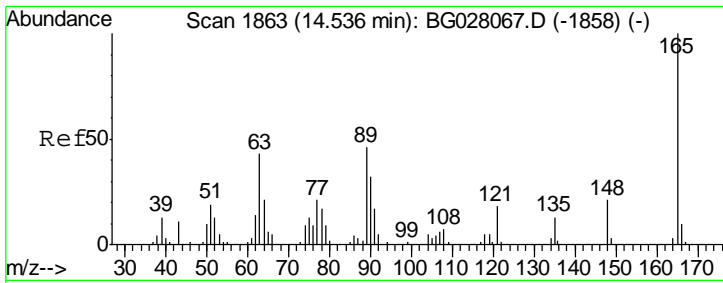
Manual Integrations APPROVED
 Sohil
 8/1/2017 2:55:11 PM



#45
 Dimethylphthalate
 Concen: 3.944 ng/ul
 RT: 14.41 min Scan# 1841
 Delta R.T. -0.00 min
 Lab File: BG028071.D
 Acq: 31 Jul 2017 15:27

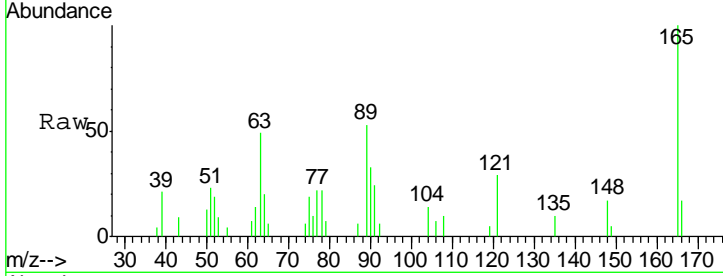
Tgt Ion	Resp	Lower	Upper
163	100		
194	4.3	4.0	6.0
164	10.8	8.4	12.6





#46
 2,6-Dinitrotoluene
 Concen: 3.256 ng/ul
 RT: 14.54 min Scan# 1863
 Delta R.T. -0.00 min
 Lab File: BG028071.D
 Acq: 31 Jul 2017 15:27

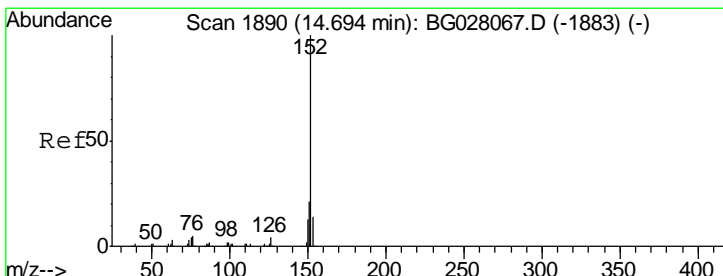
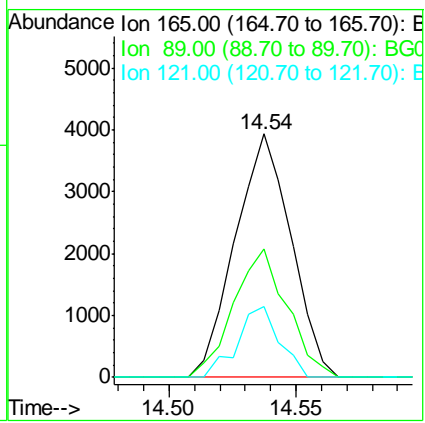
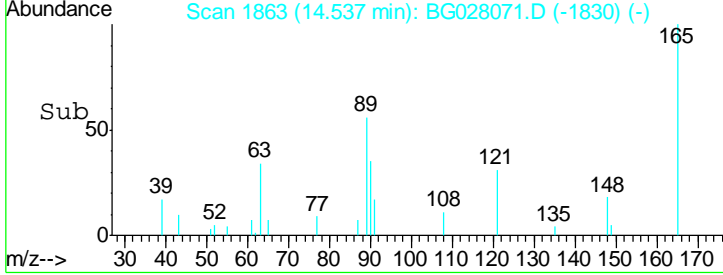
Instrument :
 BNA_G
 ClientSampled :
 MDL-S-ML-02



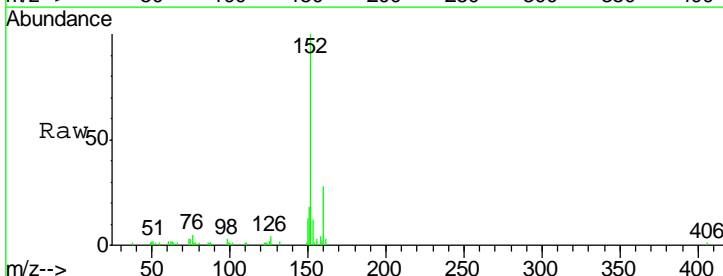
Tgt Ion:165 Resp: 6032

Ion	Ratio	Lower	Upper
165	100		
89	52.7	43.8	65.8
121	29.2	17.8	26.6

Manual Integrations
APPROVED
 Sohil
 8/1/2017 2:55:11 PM

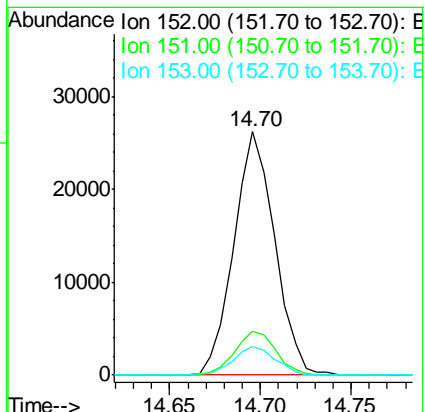
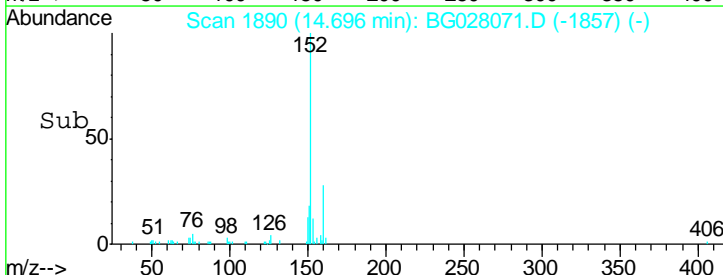


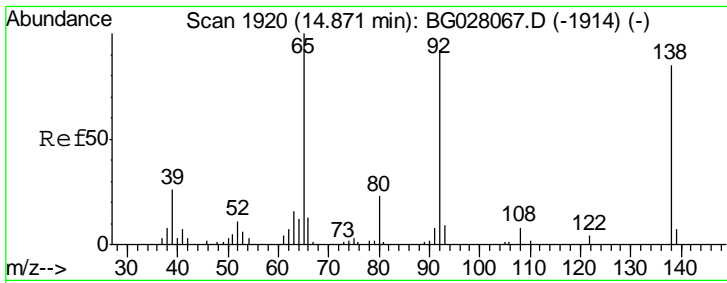
#48
 Acenaphthylene
 Concen: 3.971 ng/ul
 RT: 14.70 min Scan# 1890
 Delta R.T. -0.00 min
 Lab File: BG028071.D
 Acq: 31 Jul 2017 15:27



Tgt Ion:152 Resp: 41017

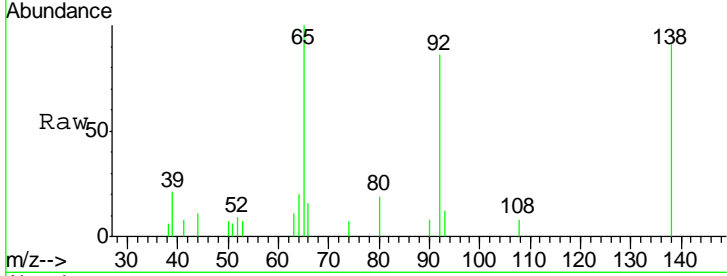
Ion	Ratio	Lower	Upper
152	100		
151	18.0	16.1	24.1
153	11.6	10.8	16.2





#49
 3-Nitroaniline
 Concen: 3.190 ng/ul
 RT: 14.88 min Scan# 1922
 Delta R.T. 0.01 min
 Lab File: BG028071.D
 Acq: 31 Jul 2017 15:27

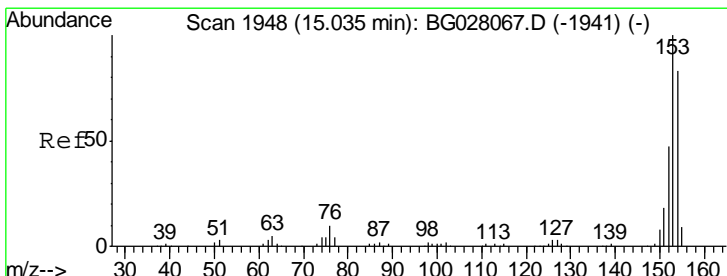
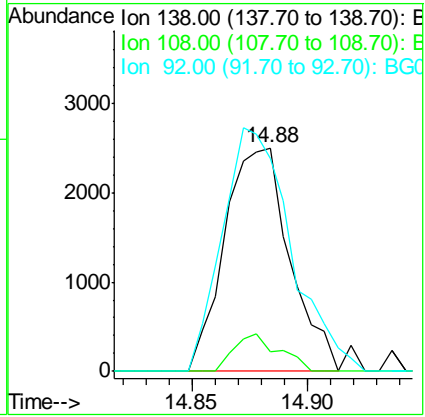
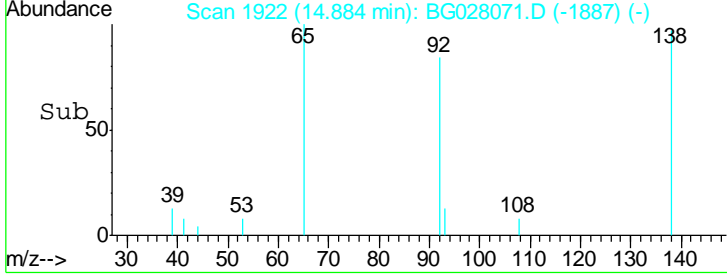
Instrument :
 BNA_G
ClientSampled :
 MDL-S-ML-02



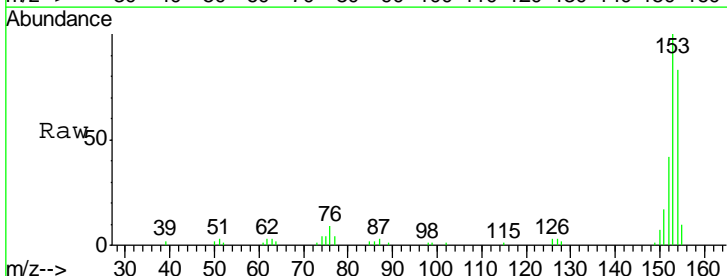
Tgt Ion: 138 Resp: 4912

Ion	Ratio	Lower	Upper
138	100		
108	8.7	7.6	11.4
92	95.1	94.2	141.2

Manual Integrations
APPROVED
 Sohil
 8/1/2017 2:55:11 PM

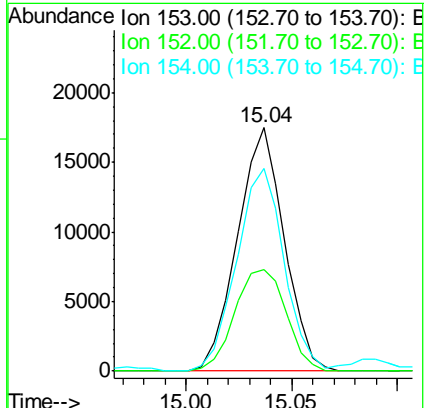
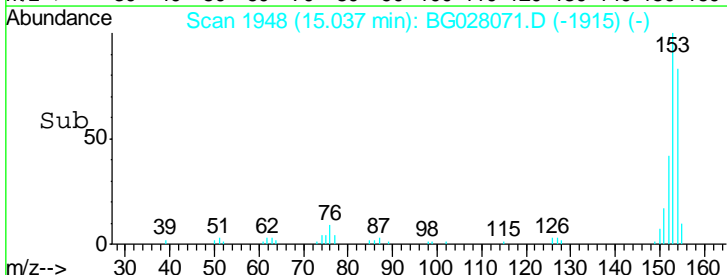


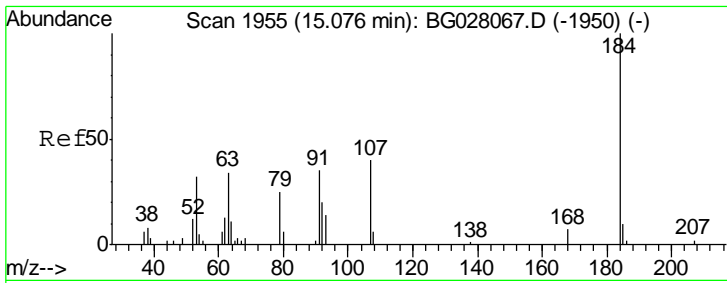
#50
 Acenaphthene
 Concen: 3.790 ng/ul
 RT: 15.04 min Scan# 1948
 Delta R.T. -0.00 min
 Lab File: BG028071.D
 Acq: 31 Jul 2017 15:27



Tgt Ion: 153 Resp: 26809

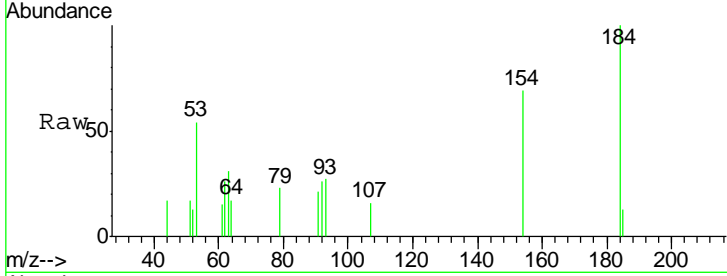
Ion	Ratio	Lower	Upper
153	100		
152	41.6	37.9	56.9
154	83.0	69.8	104.6





#51
 2,4-Dinitrophenol
 Concen: 2.044 ng/ul
 RT: 15.08 min Scan# 1956
 Delta R.T. 0.00 min
 Lab File: BG028071.D
 Acq: 31 Jul 2017 15:27

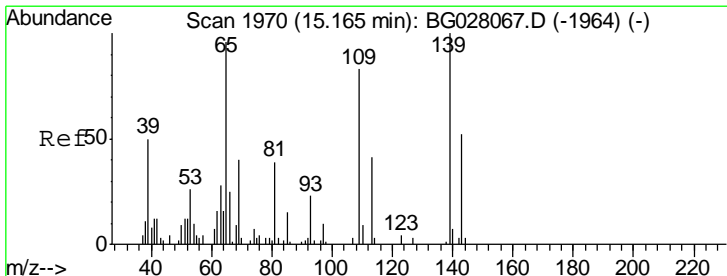
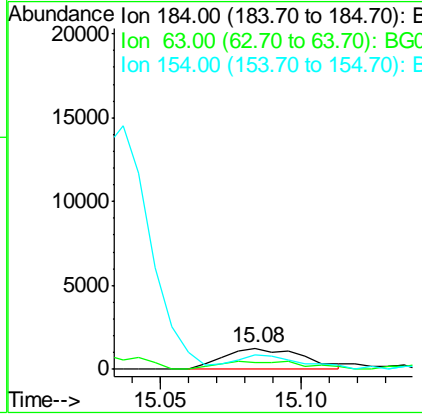
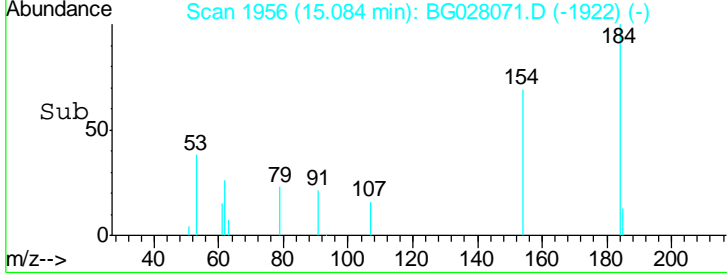
Instrument :
 BNA_G
ClientSampled :
 MDL-S-ML-02



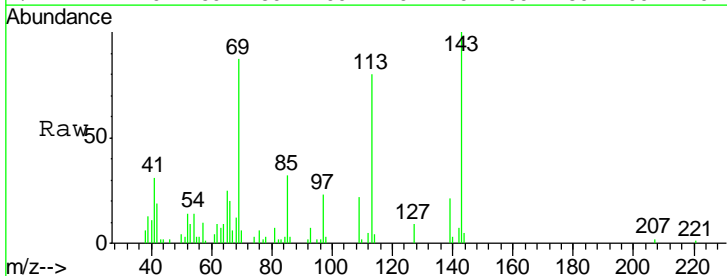
Tgt Ion	Resp	Lower	Upper
184	100		
63	31.0	39.7	59.5#
154	69.4	45.0	67.6#

Manual Integrations
APPROVED

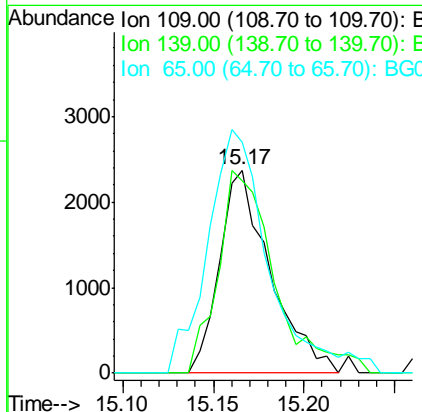
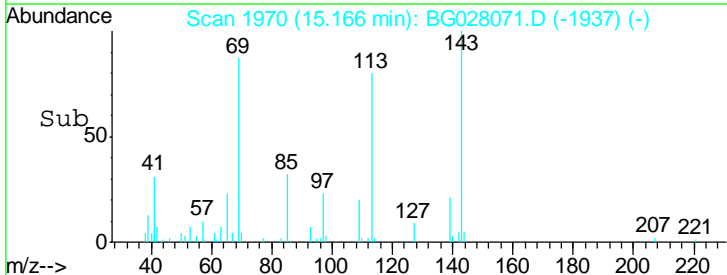
Sohil
 8/1/2017 2:55:11 PM

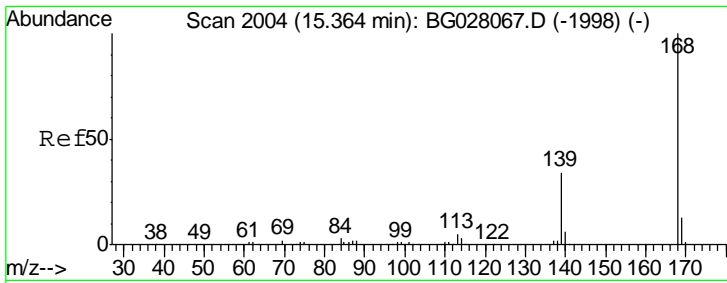


#53
 4-Nitrophenol
 Concen: 3.761 ng/ul
 RT: 15.17 min Scan# 1970
 Delta R.T. -0.00 min
 Lab File: BG028071.D
 Acq: 31 Jul 2017 15:27



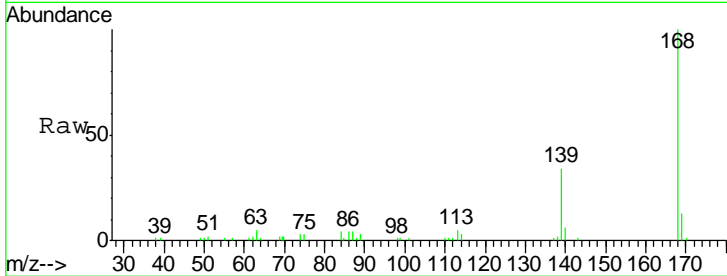
Tgt Ion	Resp	Lower	Upper
109	100		
139	94.8	91.2	136.8
65	113.8	92.6	139.0





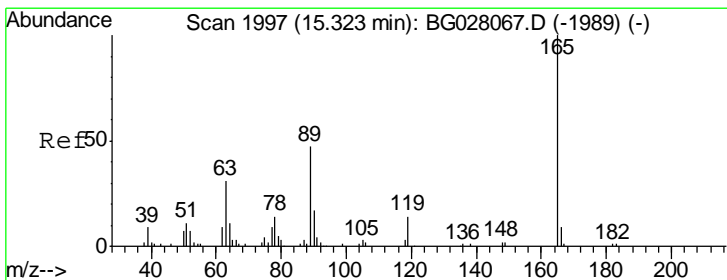
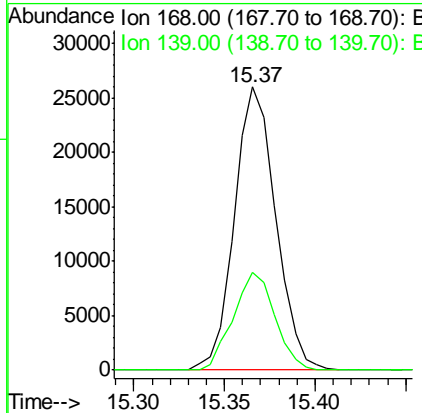
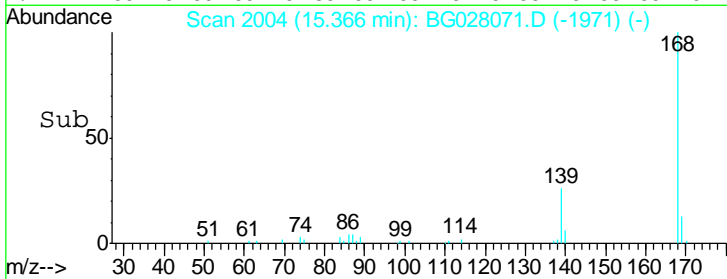
#54
 Dibenzofuran
 Concen: 3.829 ng/ul
 RT: 15.37 min Scan# 2004
 Delta R.T. -0.00 min
 Lab File: BG028071.D
 Acq: 31 Jul 2017 15:27

Instrument :
 BNA_G
 ClientSampled :
 MDL-S-ML-02

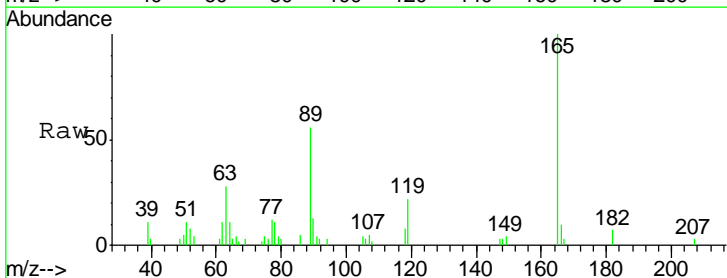


Tgt Ion:168 Resp: 41178
 Ion Ratio Lower Upper
 168 100
 139 34.4 31.0 46.4

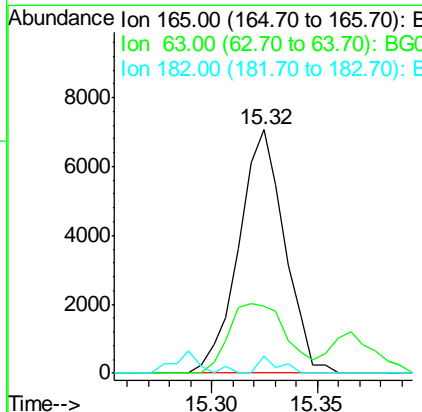
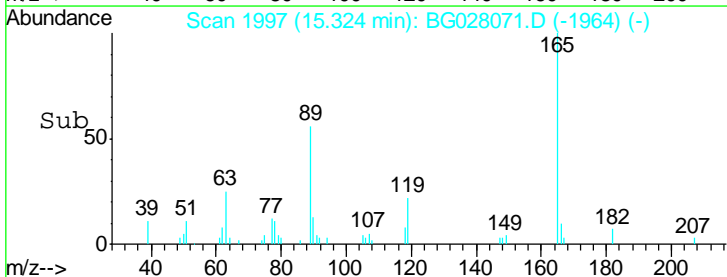
Manual Integrations
 APPROVED
 Sohil
 8/1/2017 2:55:11 PM

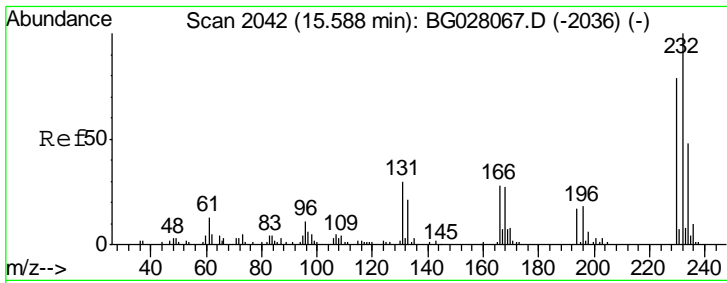


#55
 2,4-Dinitrotoluene
 Concen: 3.843 ng/ul
 RT: 15.32 min Scan# 1997
 Delta R.T. -0.00 min
 Lab File: BG028071.D
 Acq: 31 Jul 2017 15:27



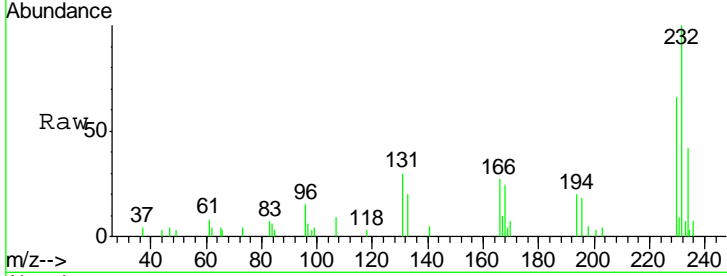
Tgt Ion:165 Resp: 10635
 Ion Ratio Lower Upper
 165 100
 63 27.5 31.4 47.0#
 182 6.9 2.7 4.1#





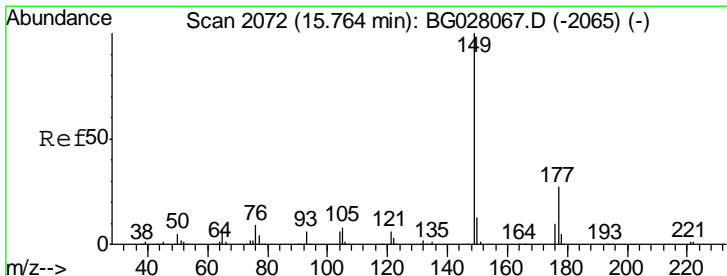
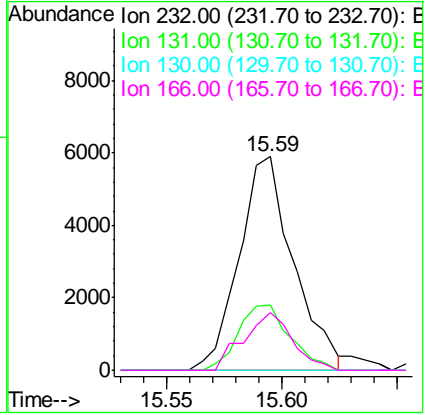
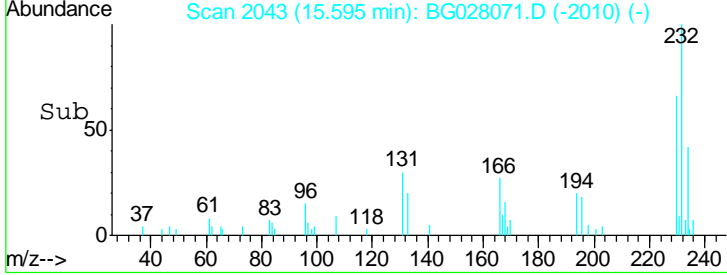
#56
 2,3,4,6-Tetrachlorophenol
 Concen: 3.338 ng/ul
 RT: 15.59 min Scan# 2043
 Delta R.T. -0.00 min
 Lab File: BG028071.D
 Acq: 31 Jul 2017 15:27

Instrument :
 BNA_G
 ClientSampled :
 MDL-S-ML-02

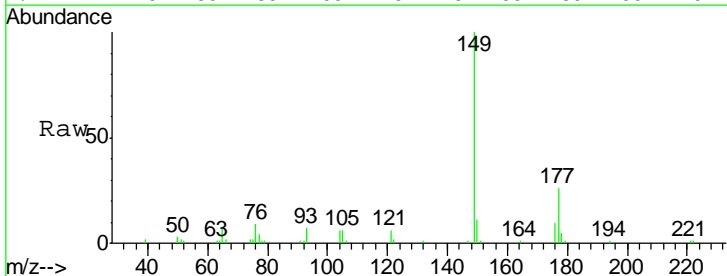


Tgt Ion	Resp	Lower	Upper
232	100		
131	30.4	27.1	40.7
130	0.0	0.0	0.0
166	27.3	20.0	30.0

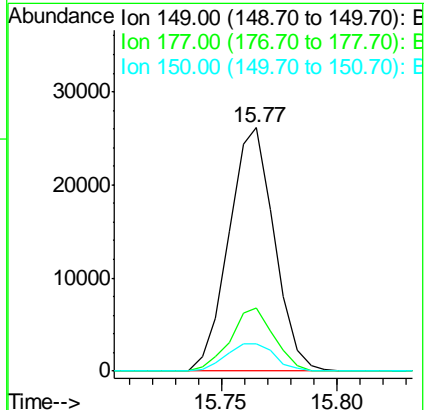
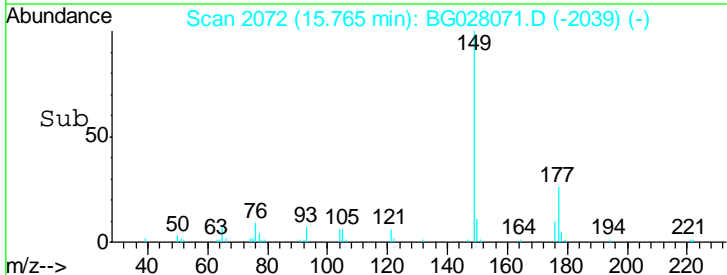
Manual Integrations
APPROVED
 Sohil
 8/1/2017 2:55:11 PM

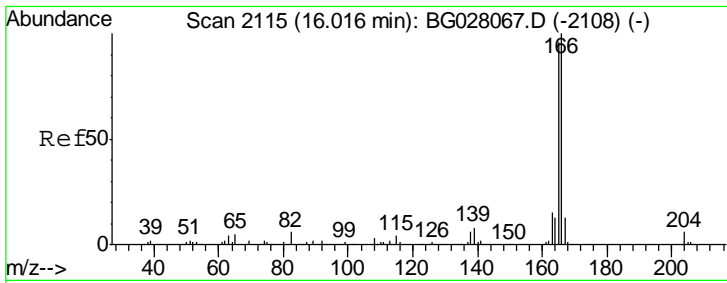


#57
 Diethylphthalate
 Concen: 3.683 ng/ul
 RT: 15.77 min Scan# 2072
 Delta R.T. -0.00 min
 Lab File: BG028071.D
 Acq: 31 Jul 2017 15:27



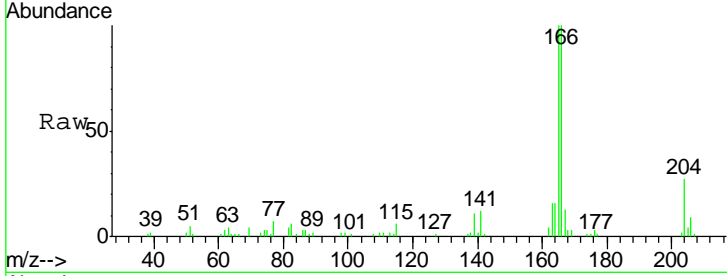
Tgt Ion	Resp	Lower	Upper
149	100		
177	26.1	19.3	28.9
150	11.4	10.6	15.8





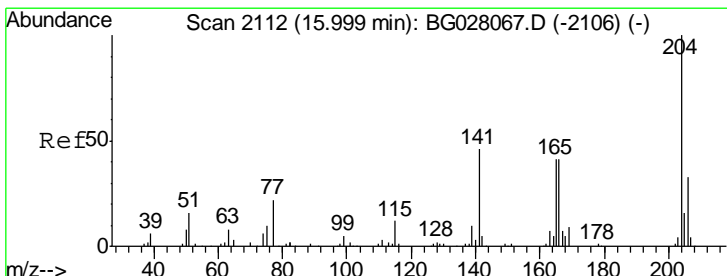
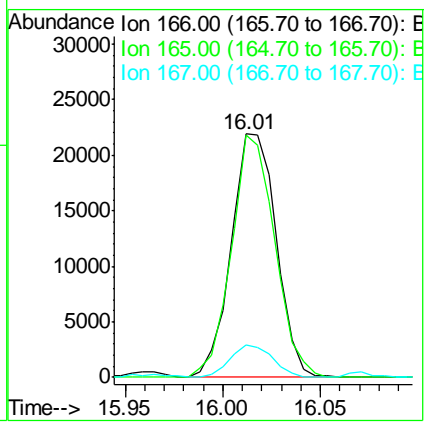
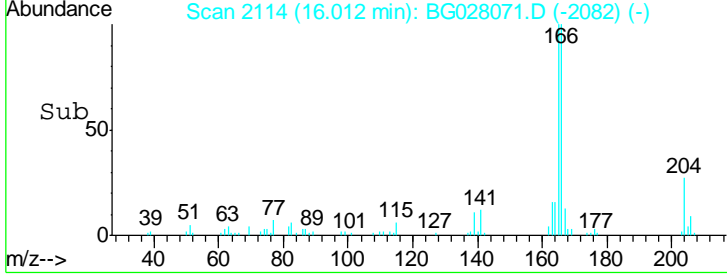
#59
 Fluorene
 Concen: 3.755 ng/ul
 RT: 16.01 min Scan# 2114
 Delta R.T. -0.01 min
 Lab File: BG028071.D
 Acq: 31 Jul 2017 15:27

Instrument :
 BNA_G
ClientSampled :
 MDL-S-ML-02

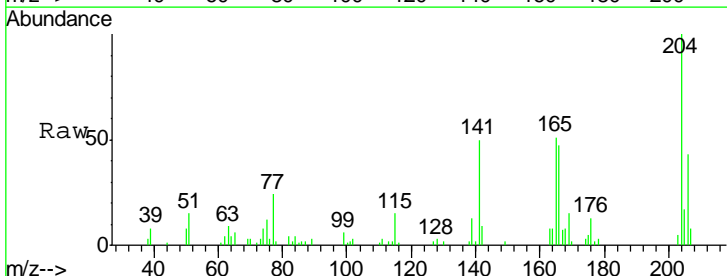


Tgt Ion	Resp	Lower	Upper
166	35037		
165	99.6	78.4	117.6
167	13.3	11.1	16.7

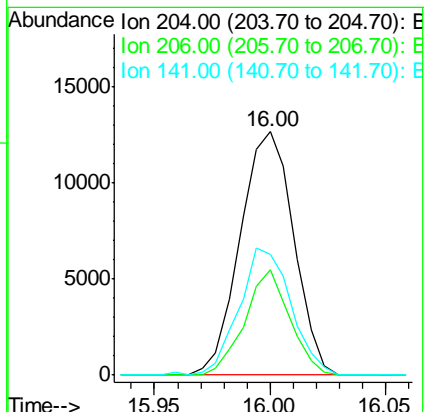
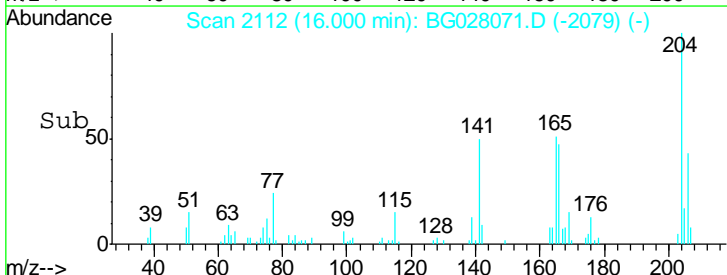
Manual Integrations
APPROVED
 Sohil
 8/1/2017 2:55:11 PM

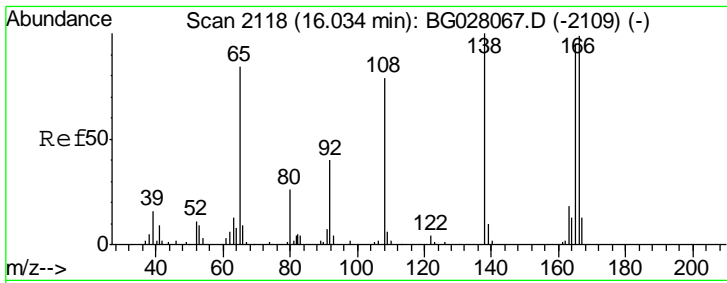


#60
 4-Chlorophenyl-phenylether
 Concen: 3.660 ng/ul
 RT: 16.00 min Scan# 2112
 Delta R.T. -0.00 min
 Lab File: BG028071.D
 Acq: 31 Jul 2017 15:27



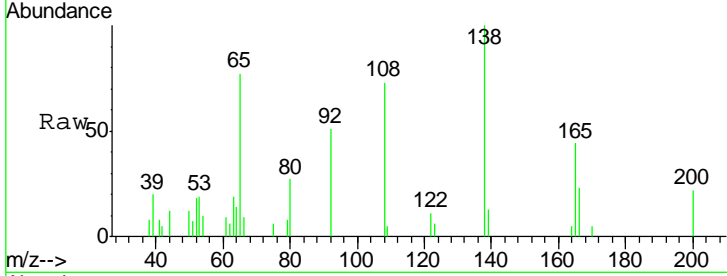
Tgt Ion	Resp	Lower	Upper
204	20396		
206	43.3	26.6	40.0#
141	49.5	40.7	61.1





#61
 4-Nitroaniline
 Concen: 3.718 ng/ul
 RT: 16.04 min Scan# 2119
 Delta R.T. 0.00 min
 Lab File: BG028071.D
 Acq: 31 Jul 2017 15:27

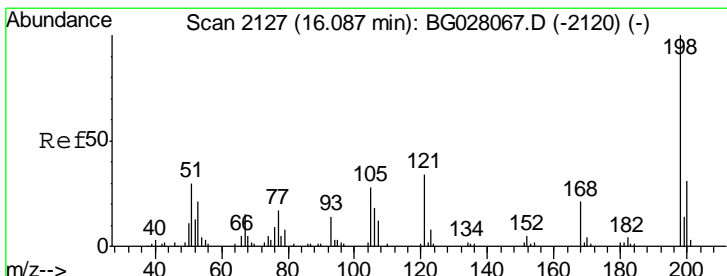
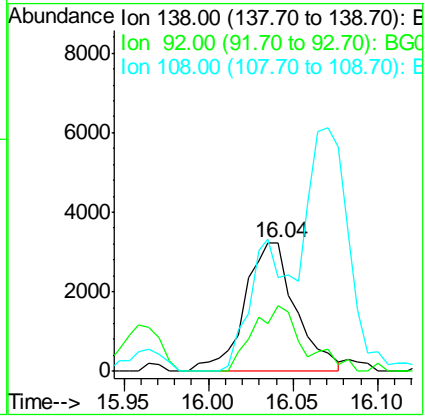
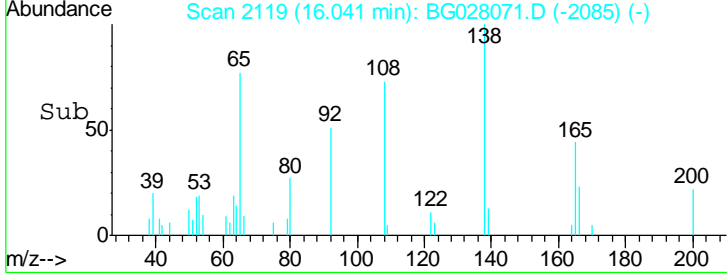
Instrument :
 BNA_G
Client Sampled :
 MDL-S-ML-02



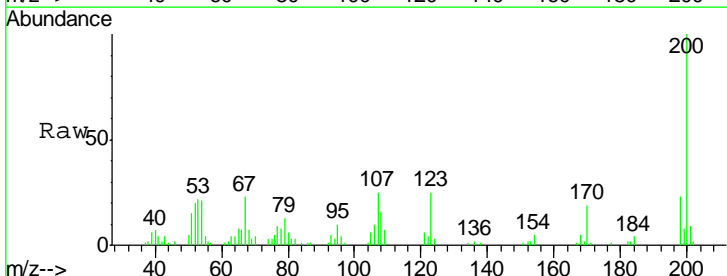
Tgt Ion: 138 Resp: 6800

Ion	Ratio	Lower	Upper
138	100		
92	51.1	38.2	57.4
108	72.5	70.0	105.0

Manual Integrations
APPROVED
 Sohil
 8/1/2017 2:55:11 PM

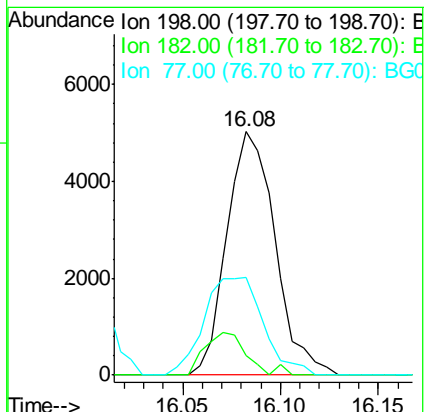
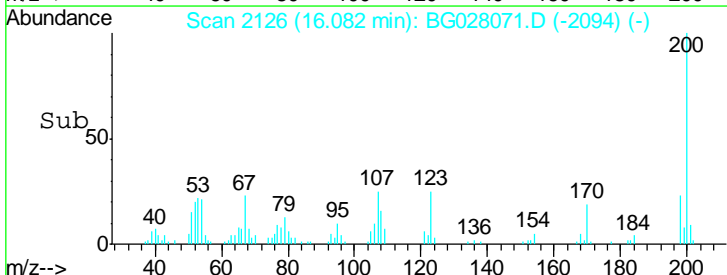


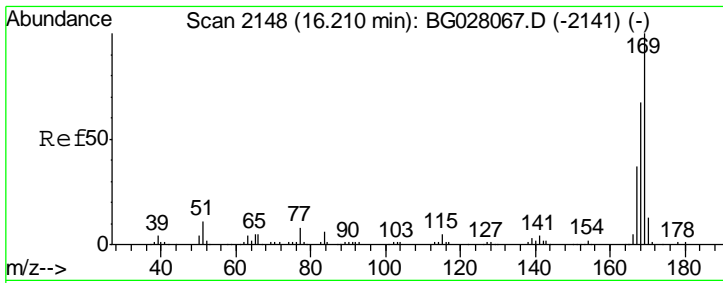
#64
 4,6-Dinitro-2-methylphenol
 Concen: 3.749 ng/ul
 RT: 16.08 min Scan# 2126
 Delta R.T. -0.01 min
 Lab File: BG028071.D
 Acq: 31 Jul 2017 15:27



Tgt Ion: 198 Resp: 8624

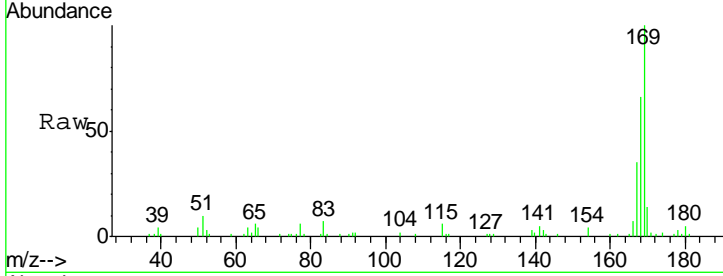
Ion	Ratio	Lower	Upper
198	100		
182	7.9	3.5	5.3#
77	40.0	18.2	27.4#





#65
 N-Nitrosodiphenylamine
 Concen: 3.646 ng/ul
 RT: 16.21 min Scan# 2148
 Delta R.T. -0.00 min
 Lab File: BG028071.D
 Acq: 31 Jul 2017 15:27

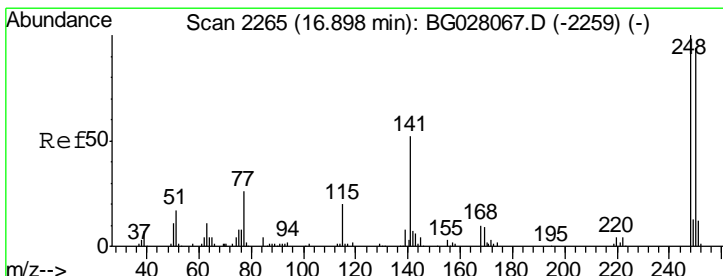
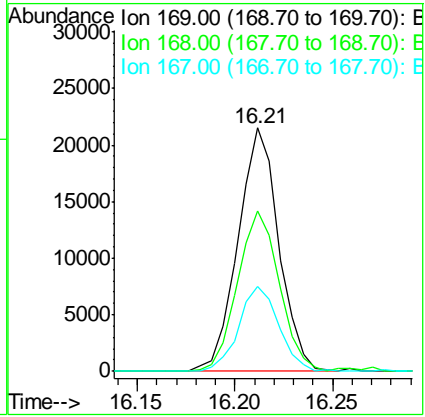
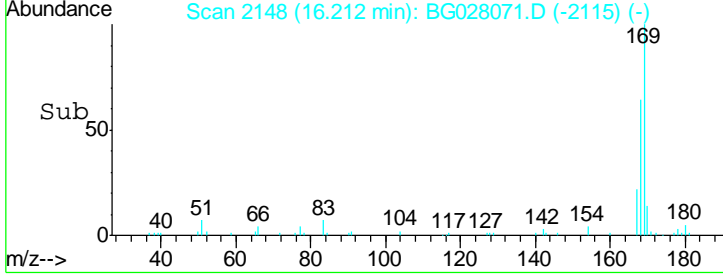
Instrument :
 BNA_G
 ClientSampled :
 MDL-S-ML-02



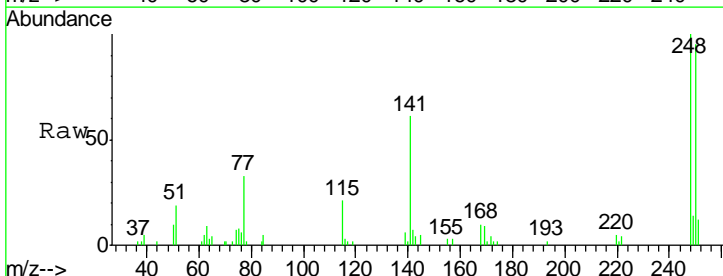
Tgt Ion: 169 Resp: 31031

Ion	Ratio	Lower	Upper
169	100		
168	65.8	53.8	80.8
167	34.7	29.5	44.3

Manual Integrations
APPROVED
 Sohil
 8/1/2017 2:55:11 PM

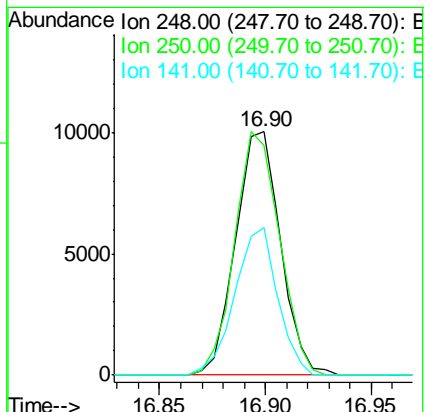
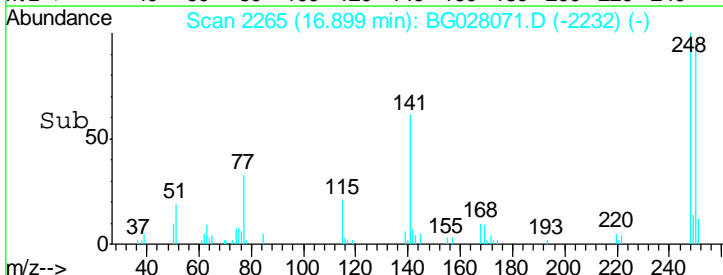


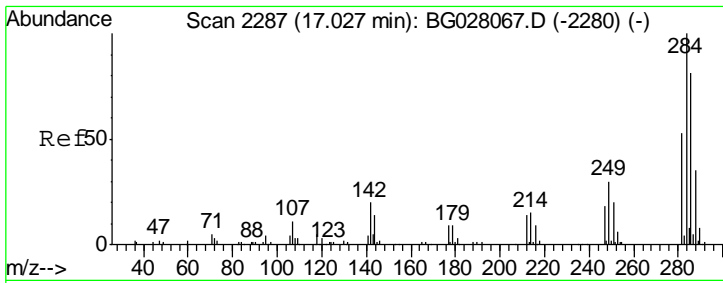
#66
 4-Bromophenyl-phenylether
 Concen: 3.408 ng/ul
 RT: 16.90 min Scan# 2265
 Delta R.T. -0.00 min
 Lab File: BG028071.D
 Acq: 31 Jul 2017 15:27



Tgt Ion: 248 Resp: 14775

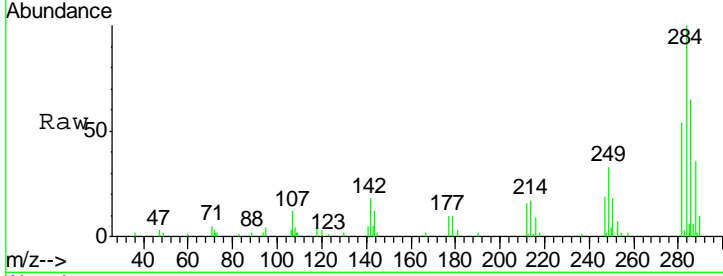
Ion	Ratio	Lower	Upper
248	100		
250	94.7	79.0	118.4
141	60.8	51.9	77.9





#67
 Hexachlorobenzene
 Concen: 3.749 ng/ul
 RT: 17.02 min Scan# 2286
 Delta R.T. -0.00 min
 Lab File: BG028071.D
 Acq: 31 Jul 2017 15:27

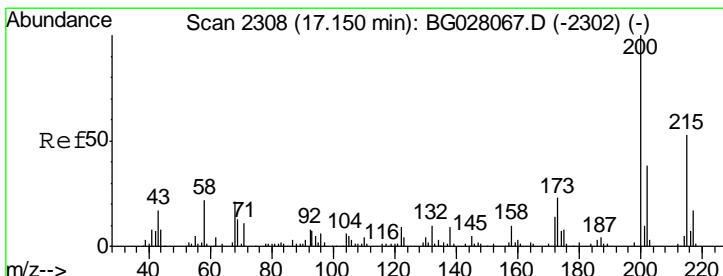
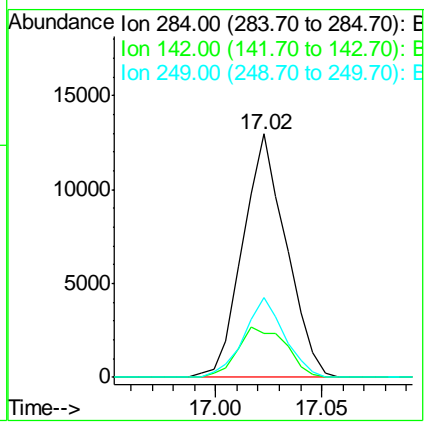
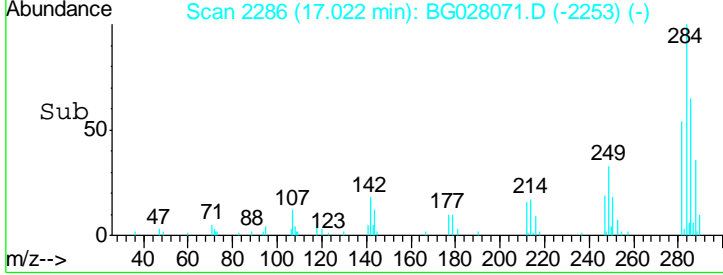
Instrument :
 BNA_G
ClientSampled :
 MDL-S-ML-02



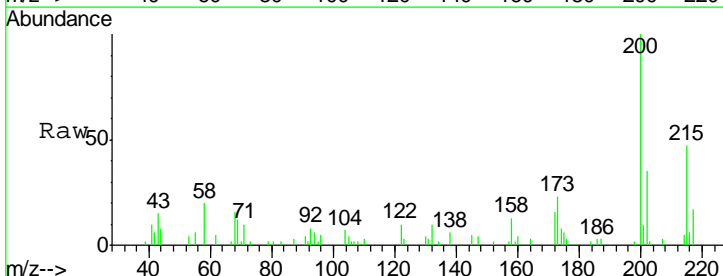
Tgt Ion: 284 Resp: 18485

Ion	Ratio	Lower	Upper
284	100		
142	16.8	21.3	31.9#
249	30.9	26.3	39.5

Manual Integrations
APPROVED
 Sohil
 8/1/2017 2:55:11 PM

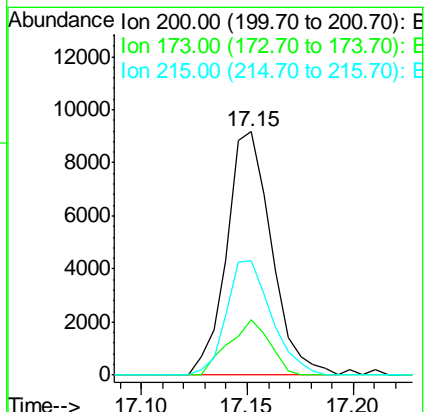
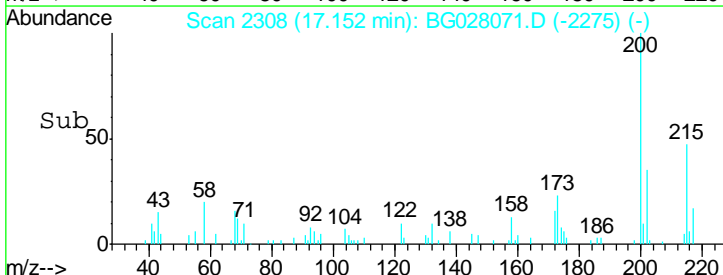


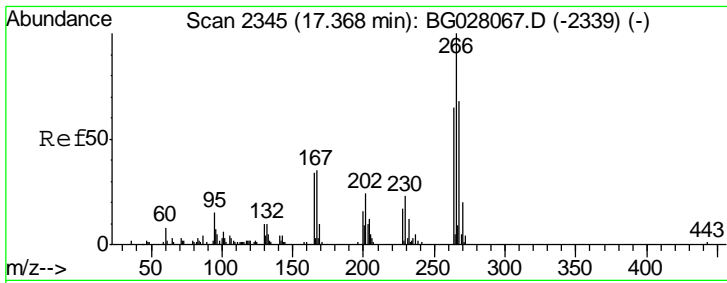
#68
 Atrazine
 Concen: 3.317 ng/ul
 RT: 17.15 min Scan# 2308
 Delta R.T. -0.00 min
 Lab File: BG028071.D
 Acq: 31 Jul 2017 15:27



Tgt Ion: 200 Resp: 13472

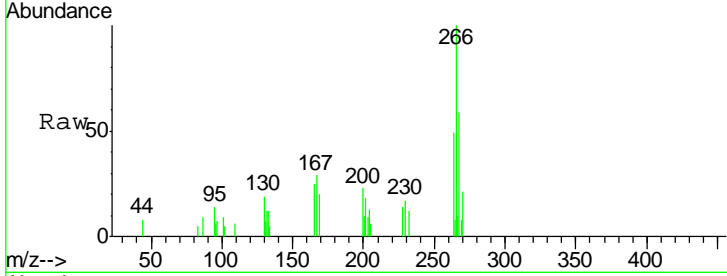
Ion	Ratio	Lower	Upper
200	100		
173	22.8	20.6	31.0
215	46.8	39.8	59.6





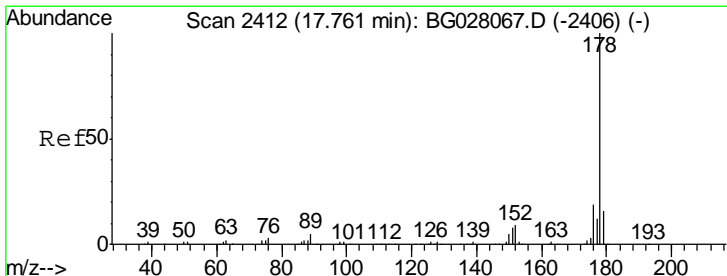
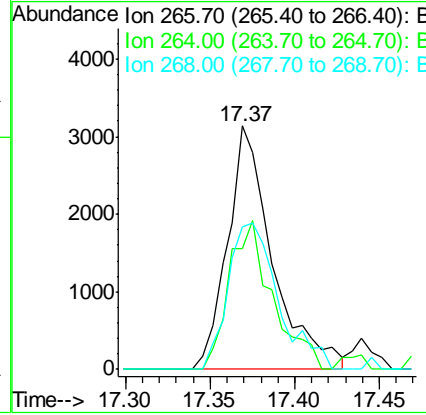
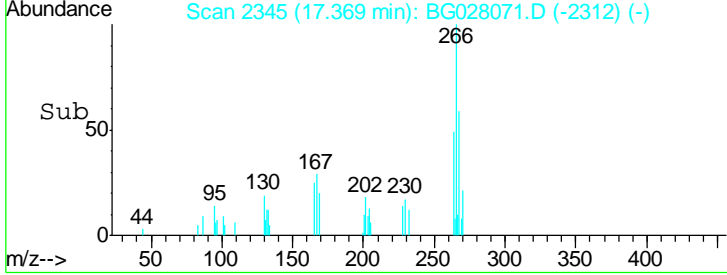
#69
 Pentachlorophenol
 Concen: 2.258 ng/ul
 RT: 17.37 min Scan# 2345
 Delta R.T. -0.00 min
 Lab File: BG028071.D
 Acq: 31 Jul 2017 15:27

Instrument :
 BNA_G
ClientSampled :
 MDL-S-ML-02

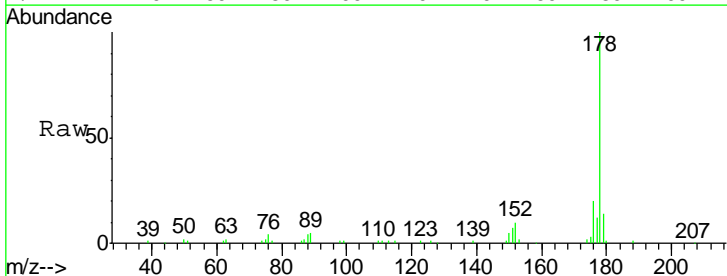


Tgt Ion	Resp	Lower	Upper
266	100		
264	57.2	48.2	72.4
268	58.6	52.3	78.5

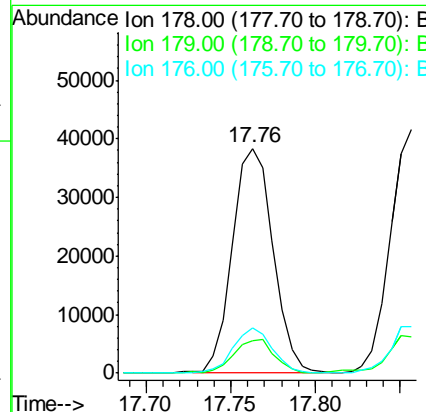
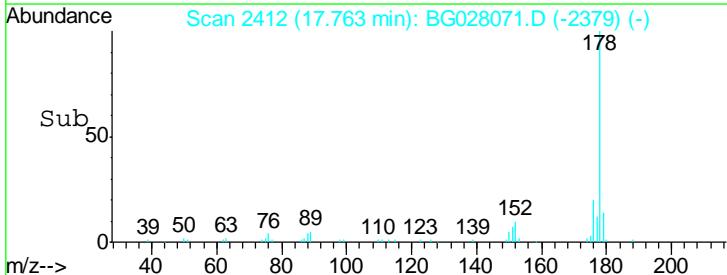
Manual Integrations
APPROVED
 Sohil
 8/1/2017 2:55:11 PM

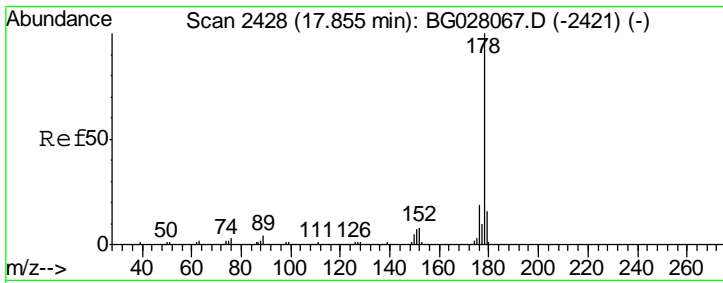


#70
 Phenanthrene
 Concen: 3.835 ng/ul
 RT: 17.76 min Scan# 2412
 Delta R.T. -0.00 min
 Lab File: BG028071.D
 Acq: 31 Jul 2017 15:27



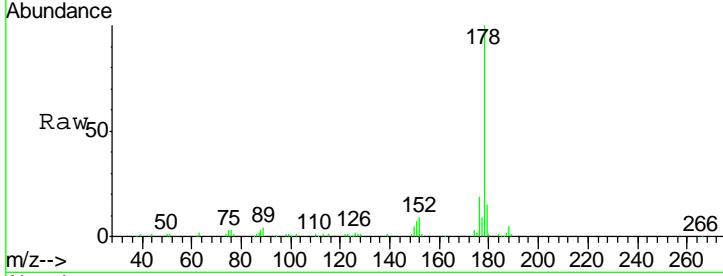
Tgt Ion	Resp	Lower	Upper
178	100		
179	14.4	12.3	18.5
176	19.8	15.4	23.0





#72
 Anthracene
 Concen: 3.782 ng/ul
 RT: 17.86 min Scan# 2428
 Delta R.T. -0.00 min
 Lab File: BG028071.D
 Acq: 31 Jul 2017 15:27

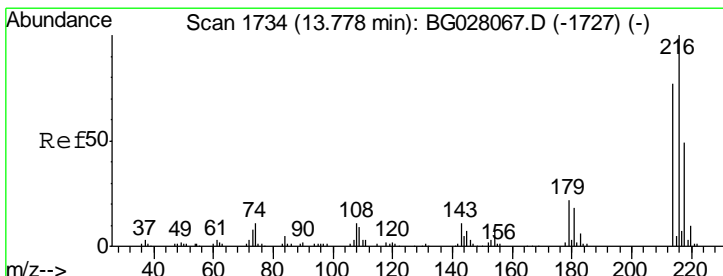
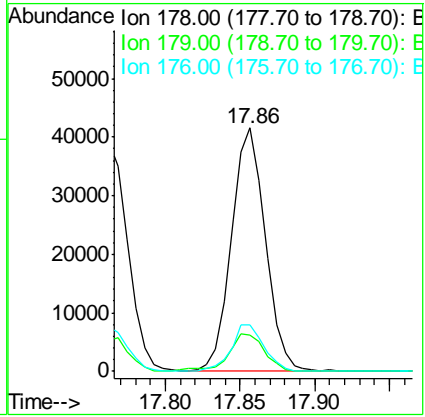
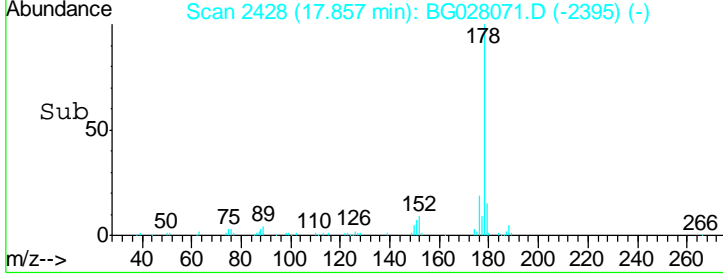
Instrument :
 BNA_G
ClientSampled :
 MDL-S-ML-02



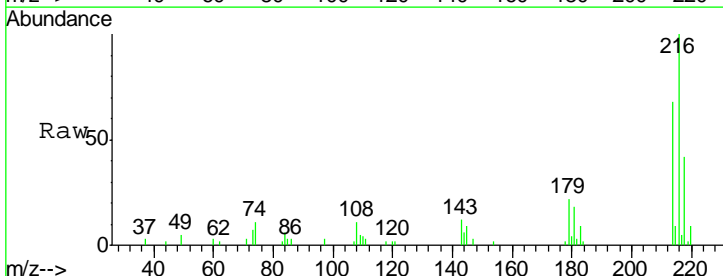
Tgt Ion: 178 Resp: 66017

Ion	Ratio	Lower	Upper
178	100		
179	14.8	13.4	20.2
176	19.0	15.4	23.0

Manual Integrations
APPROVED
 Sohil
 8/1/2017 2:55:11 PM

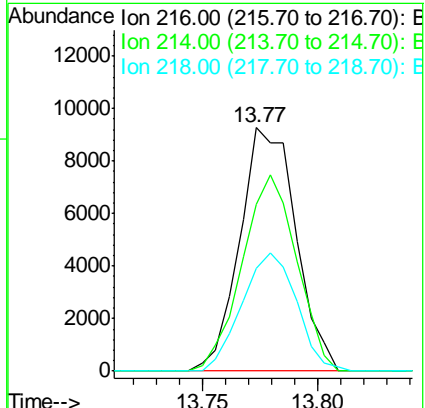
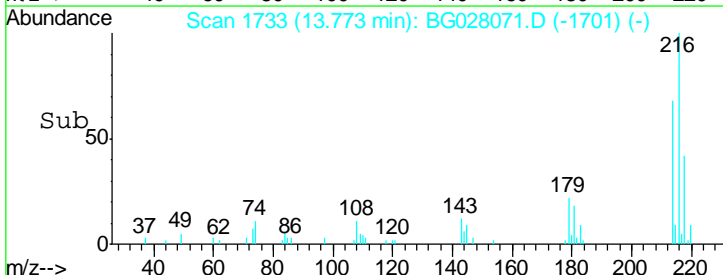


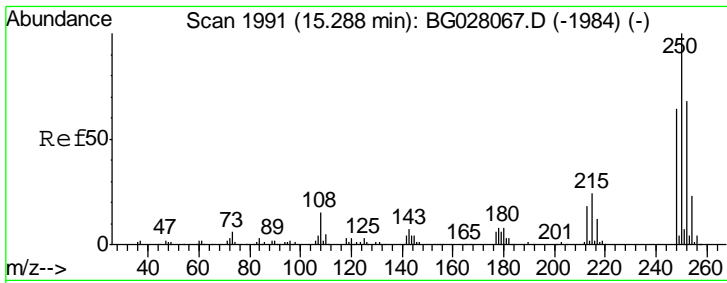
#73
 1,2,3,4-Tetrachlorobenzene
 Concen: 3.328 ng/uL
 RT: 13.77 min Scan# 1733
 Delta R.T. -0.01 min
 Lab File: BG028071.D
 Acq: 31 Jul 2017 15:27



Tgt Ion: 216 Resp: 15652

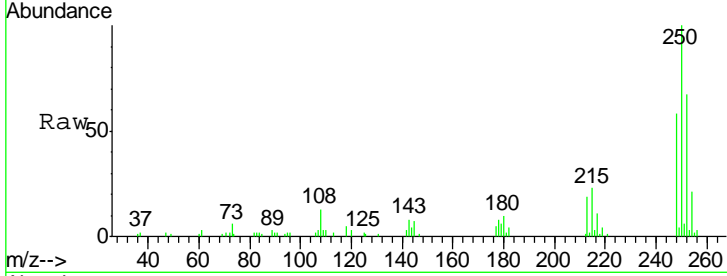
Ion	Ratio	Lower	Upper
216	100		
214	64.8	64.1	96.1
218	39.9	39.4	59.0





#74
 Pentachlorobenzene
 Concen: 3.427 ng/uL
 RT: 15.29 min Scan# 1991
 Delta R.T. -0.00 min
 Lab File: BG028071.D
 Acq: 31 Jul 2017 15:27

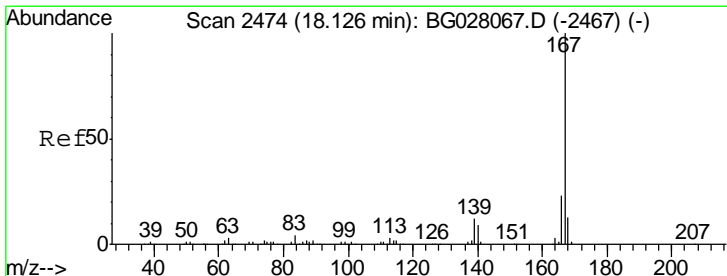
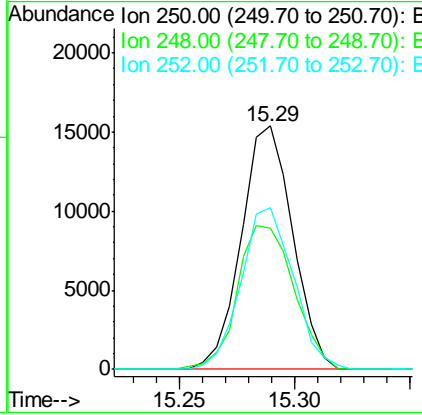
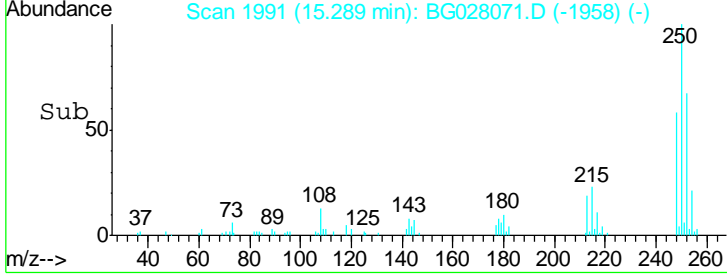
Instrument :
 BNA_G
ClientSampled :
 MDL-S-ML-02



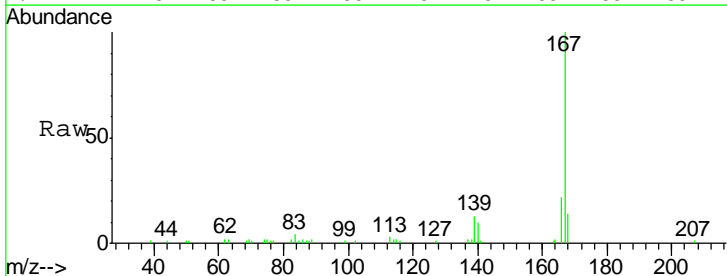
Tgt Ion: 250 Resp: 23949

Ion	Ratio	Lower	Upper
250	100		
248	57.7	51.4	77.2
252	66.6	49.8	74.6

Manual Integrations
APPROVED
 Sohil
 8/1/2017 2:55:11 PM

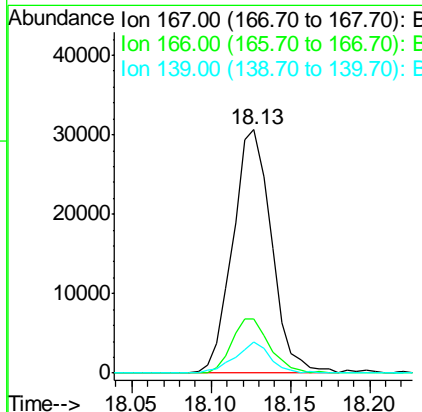
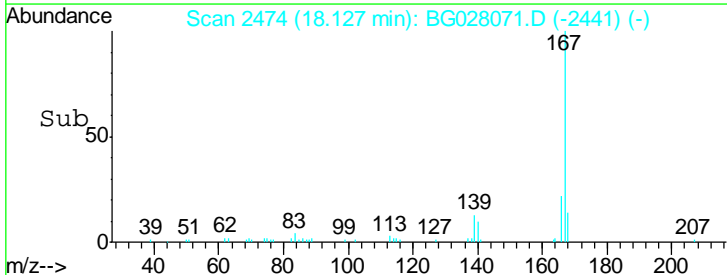


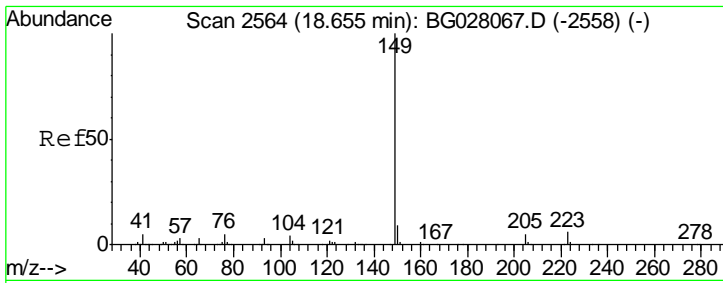
#75
 Carbazole
 Concen: 3.631 ng/ul
 RT: 18.13 min Scan# 2474
 Delta R.T. -0.00 min
 Lab File: BG028071.D
 Acq: 31 Jul 2017 15:27



Tgt Ion: 167 Resp: 51899

Ion	Ratio	Lower	Upper
167	100		
166	22.2	17.0	25.4
139	12.6	9.1	13.7





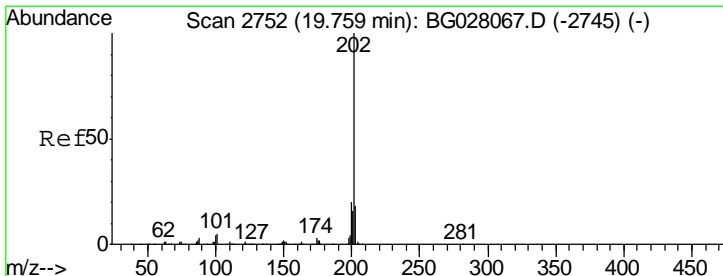
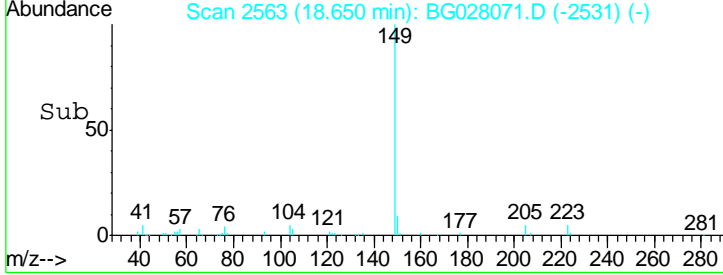
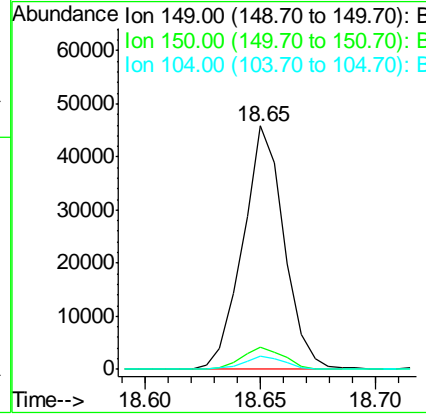
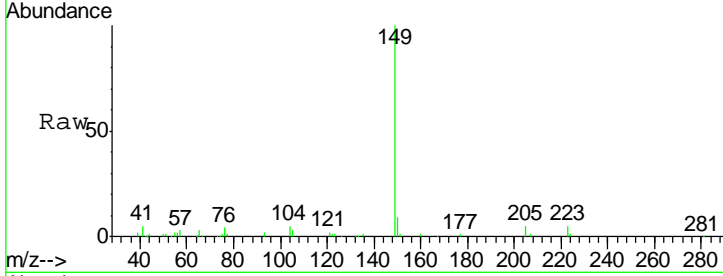
#76
 Di-n-butylphthalate
 Concen: 3.588 ng/ul
 RT: 18.65 min Scan# 2563
 Delta R.T. -0.01 min
 Lab File: BG028071.D
 Acq: 31 Jul 2017 15:27

Instrument :
 BNA_G
ClientSampled :
 MDL-S-ML-02

Tgt Ion	Resp	Lower	Upper
149	100		
150	8.9	7.5	11.3
104	5.5	4.1	6.1

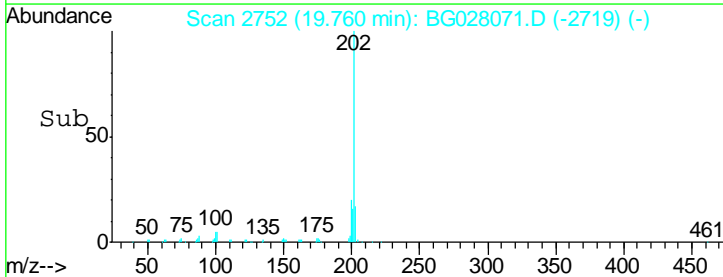
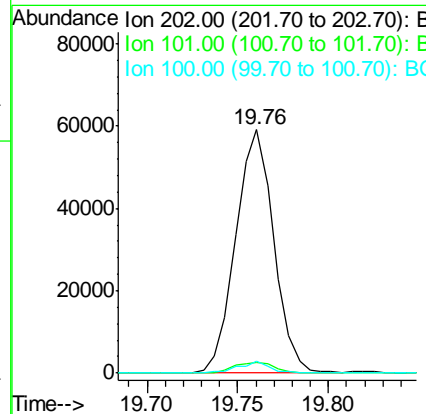
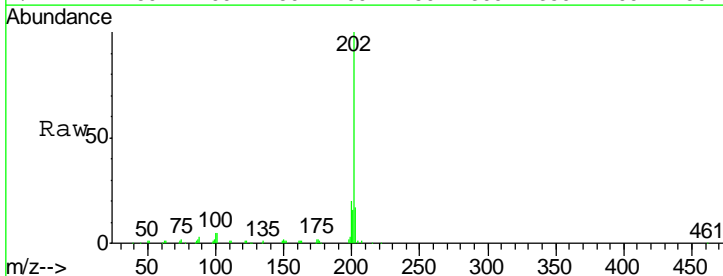
Manual Integrations
APPROVED

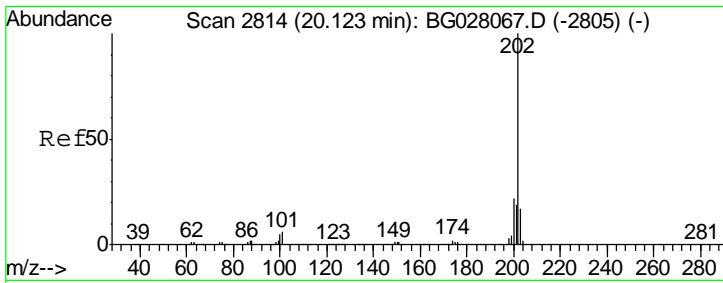
Sohil
 8/1/2017 2:55:11 PM



#77
 Fluoranthene
 Concen: 4.027 ng/ul
 RT: 19.76 min Scan# 2752
 Delta R.T. -0.00 min
 Lab File: BG028071.D
 Acq: 31 Jul 2017 15:27

Tgt Ion	Resp	Lower	Upper
202	100		
101	4.6	6.1	9.1#
100	4.7	4.6	7.0





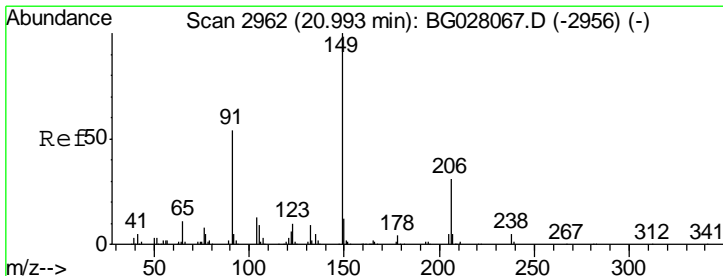
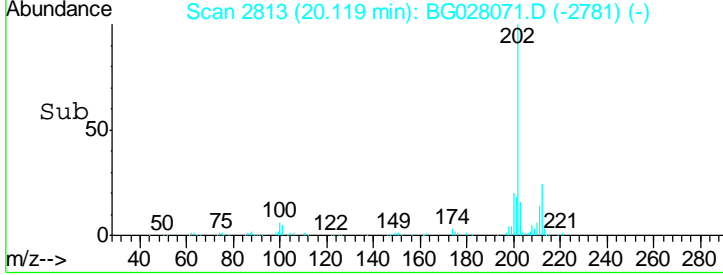
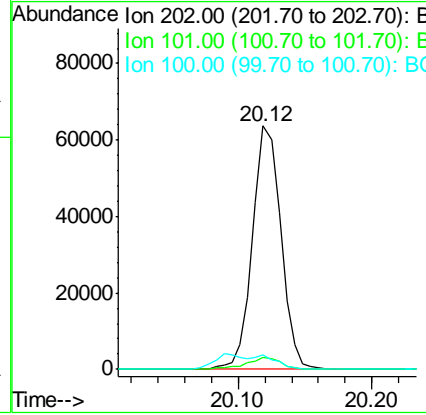
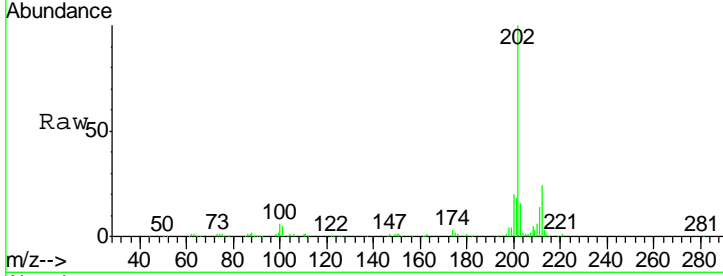
#80
 Pyrene
 Concen: 3.899 ng/ul
 RT: 20.12 min Scan# 2813
 Delta R.T. -0.01 min
 Lab File: BG028071.D
 Acq: 31 Jul 2017 15:27

Instrument :
 BNA_G
ClientSampled :
 MDL-S-ML-02

Tgt Ion	Ratio	Lower	Upper
202	100		
101	5.1	6.9	10.3#
100	6.0	5.6	8.4

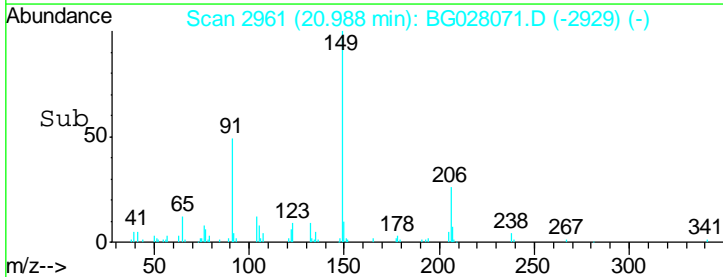
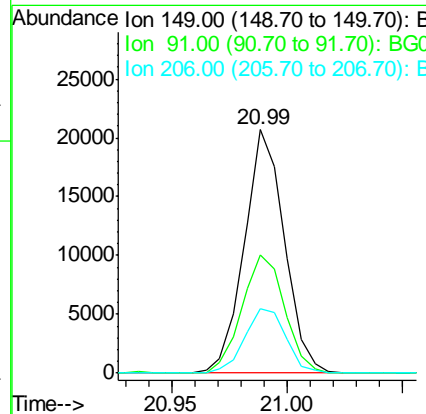
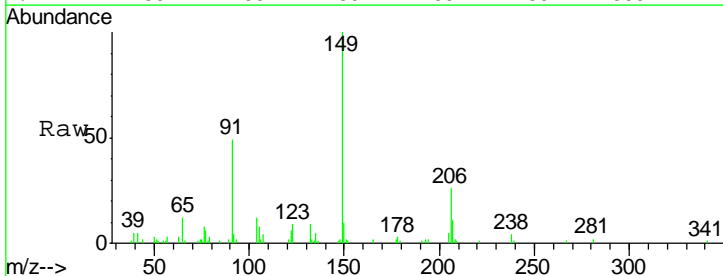
Manual Integrations
APPROVED

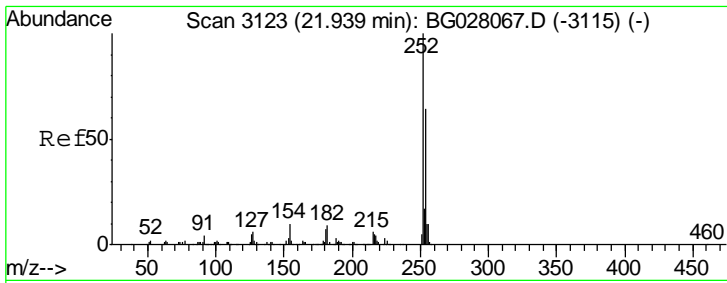
Sohil
 8/1/2017 2:55:11 PM



#81
 Butylbenzylphthalate
 Concen: 3.528 ng/ul
 RT: 20.99 min Scan# 2961
 Delta R.T. -0.01 min
 Lab File: BG028071.D
 Acq: 31 Jul 2017 15:27

Tgt Ion	Ratio	Lower	Upper
149	100		
91	48.7	53.4	80.0#
206	26.2	19.3	28.9





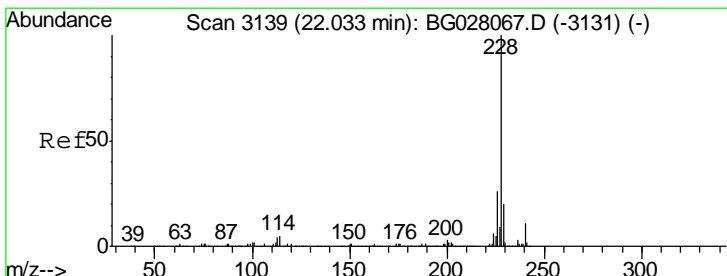
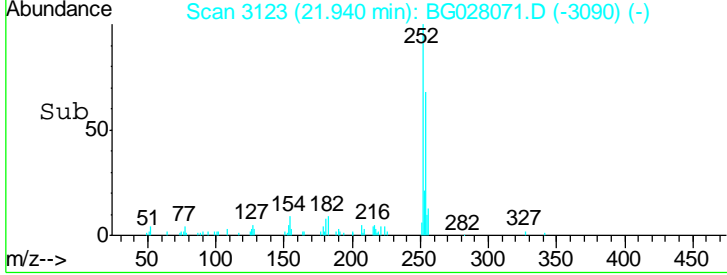
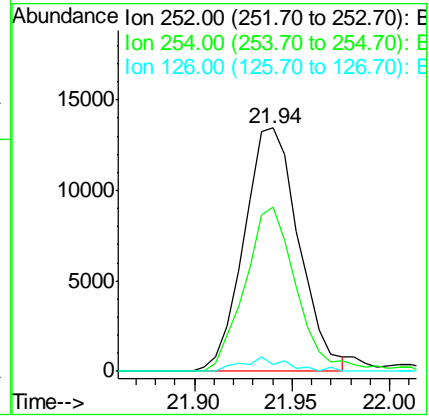
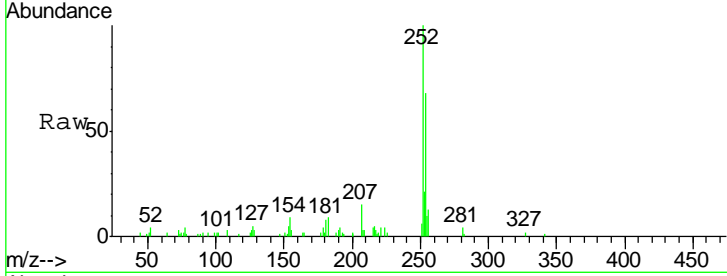
#82
 3,3'-Dichlorobenzidine
 Concen: 3.093 ng/ul
 RT: 21.94 min Scan# 3123
 Delta R.T. -0.00 min
 Lab File: BG028071.D
 Acq: 31 Jul 2017 15:27

Instrument : BNA_G
 Client Sampled : MDL-S-ML-02

Tgt Ion	Resp	Lower	Upper
252	100		
254	67.6	52.8	79.2
126	2.9	6.9	10.3#

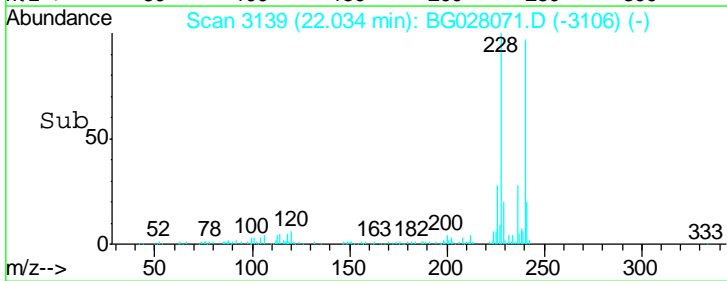
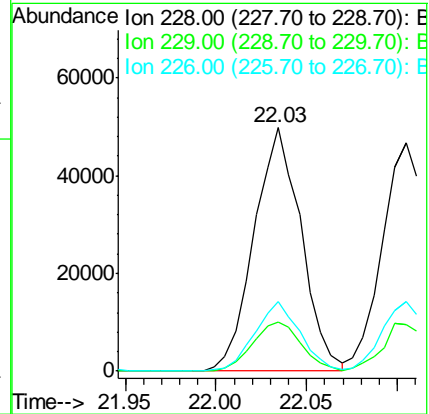
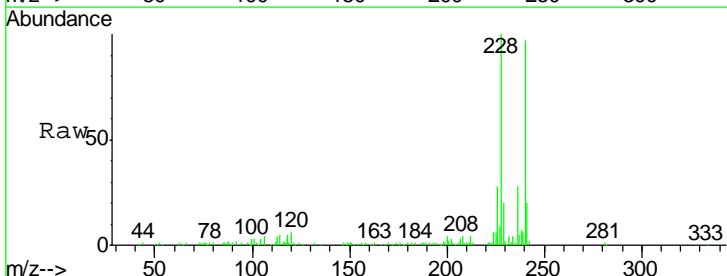
Manual Integrations
 APPROVED

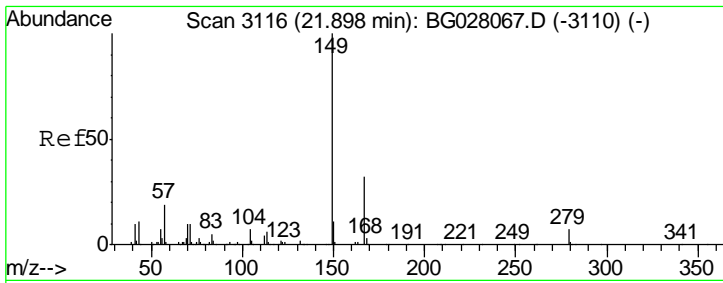
Sohil
 8/1/2017 2:55:11 PM



#83
 Benzo(a)anthracene
 Concen: 3.677 ng/ul
 RT: 22.03 min Scan# 3139
 Delta R.T. -0.00 min
 Lab File: BG028071.D
 Acq: 31 Jul 2017 15:27

Tgt Ion	Resp	Lower	Upper
228	100		
229	20.3	16.0	24.0
226	28.5	21.8	32.8





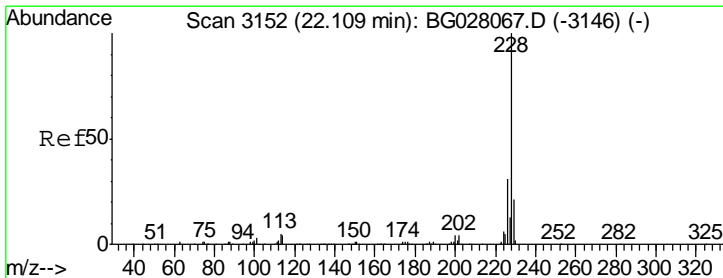
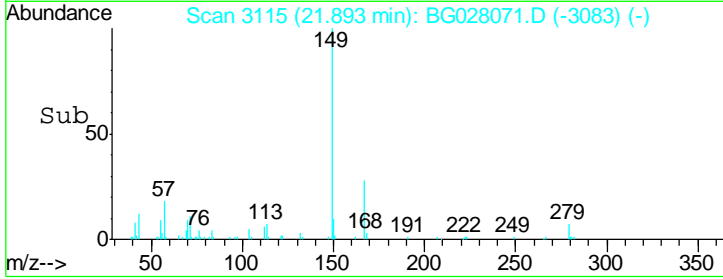
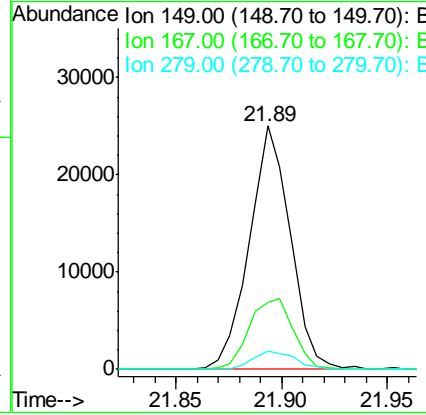
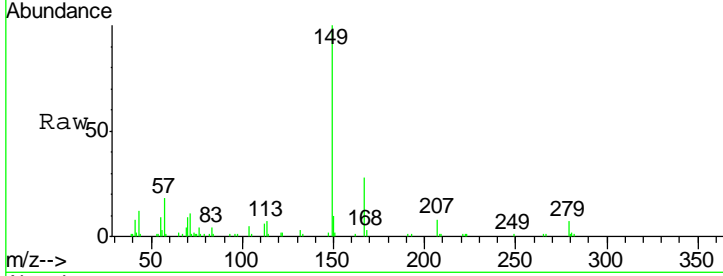
#84
 Bis(2-ethylhexyl)phthalate
 Concen: 3.229 ng/ul
 RT: 21.89 min Scan# 3115
 Delta R.T. -0.01 min
 Lab File: BG028071.D
 Acq: 31 Jul 2017 15:27

Instrument :
 BNA_G
 ClientSampled :
 MDL-S-ML-02

Tgt Ion	Resp	Lower	Upper
149	33609		
167	27.6	23.0	34.6
279	7.4	4.3	6.5#

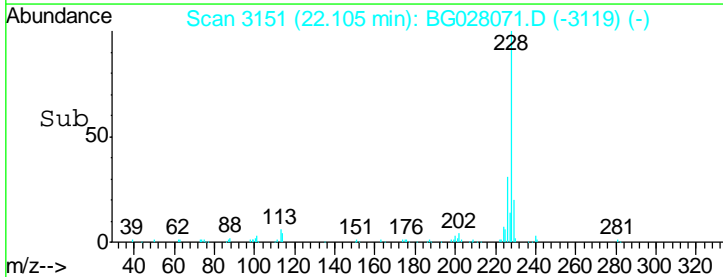
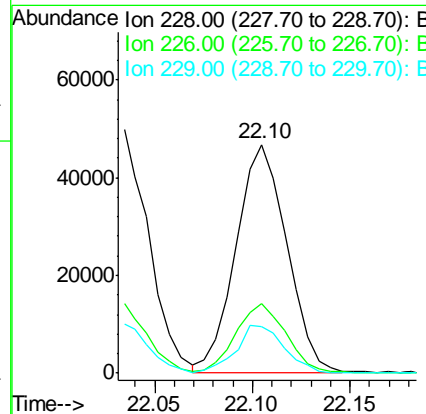
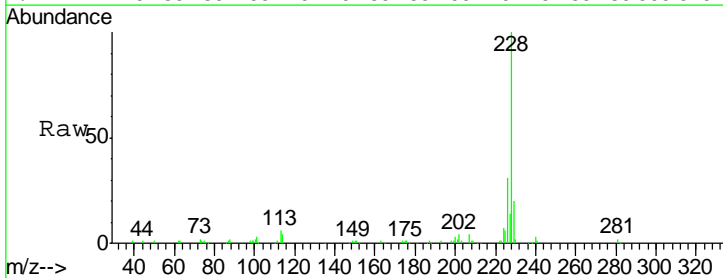
Manual Integrations
 APPROVED

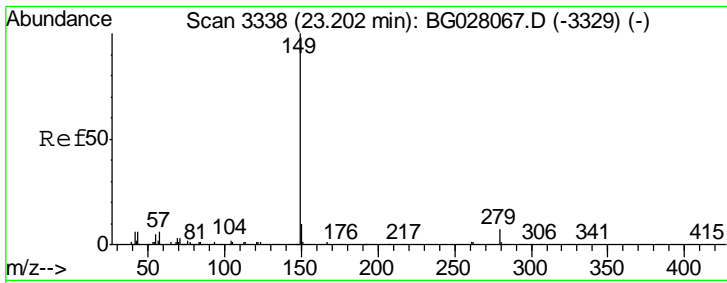
Sohil
 8/1/2017 2:55:11 PM



#85
 Chrysene
 Concen: 3.767 ng/ul
 RT: 22.10 min Scan# 3151
 Delta R.T. -0.01 min
 Lab File: BG028071.D
 Acq: 31 Jul 2017 15:27

Tgt Ion	Resp	Lower	Upper
228	84418		
226	30.6	24.1	36.1
229	20.4	16.0	24.0

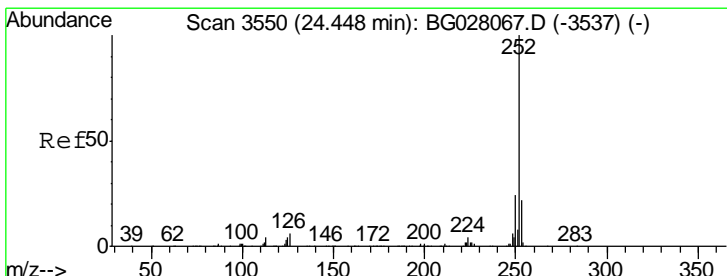
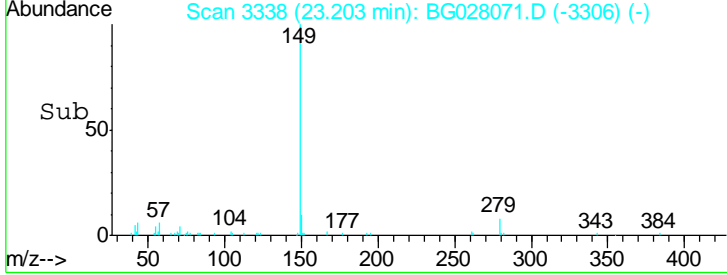
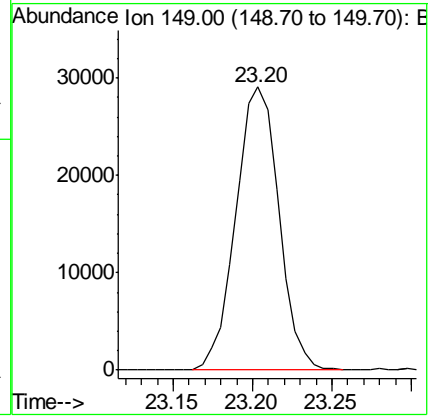
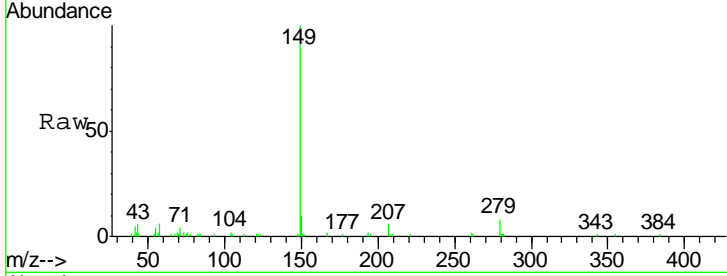




#87
 Di-n-octyl phthalate
 Concen: 3.055 ng/ul
 RT: 23.20 min Scan# 3338
 Delta R.T. -0.01 min
 Lab File: BG028071.D
 Acq: 31 Jul 2017 15:27
 Tgt Ion:149 Resp: 54812

Instrument :
 BNA_G
 ClientSampleId :
 MDL-S-ML-02

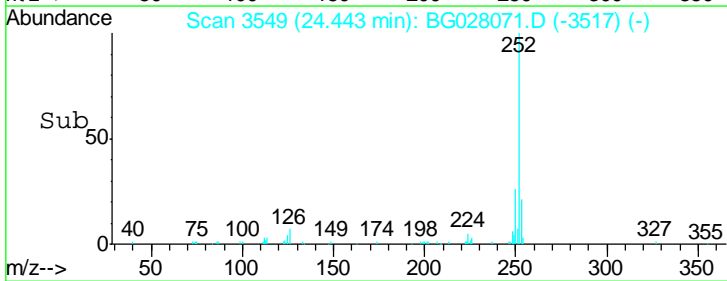
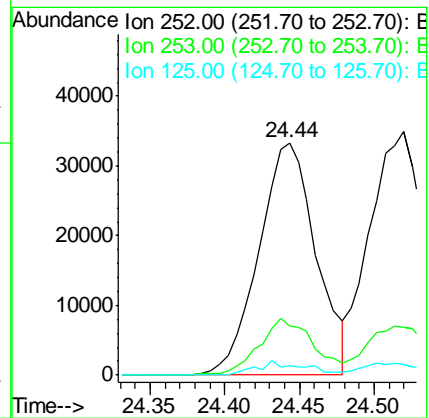
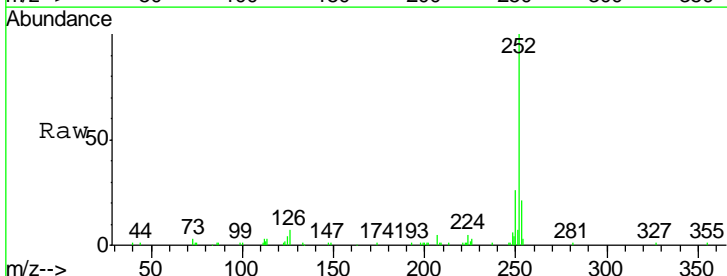
Manual Integrations
APPROVED
 Sohil
 8/1/2017 2:55:11 PM

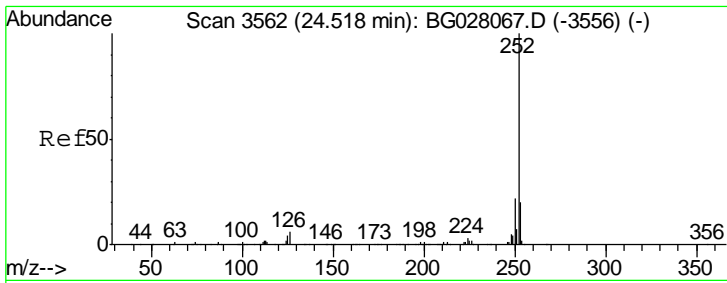


#88
 Benzo(b)fluoranthene
 Concen: 3.494 ng/ul
 RT: 24.44 min Scan# 3549
 Delta R.T. -0.01 min
 Lab File: BG028071.D
 Acq: 31 Jul 2017 15:27

Tgt Ion:252 Resp: 88553

Ion	Ratio	Lower	Upper
252	100		
253	20.9	17.4	26.0
125	4.2	4.9	7.3#





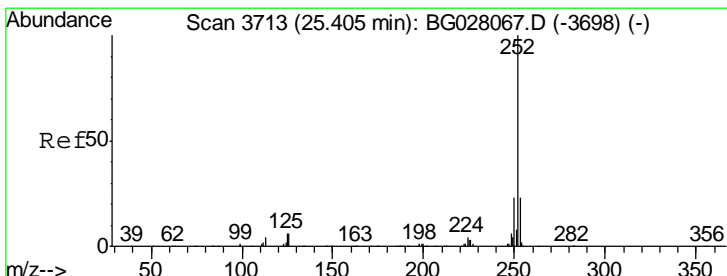
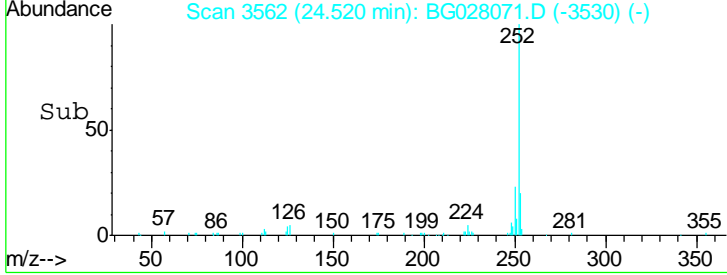
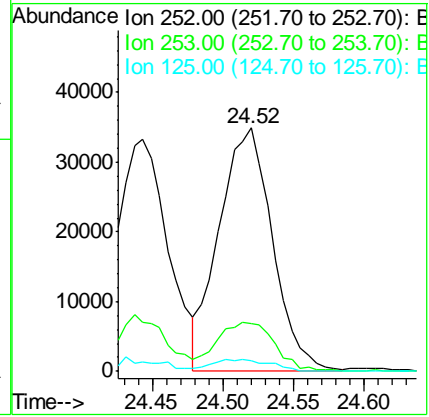
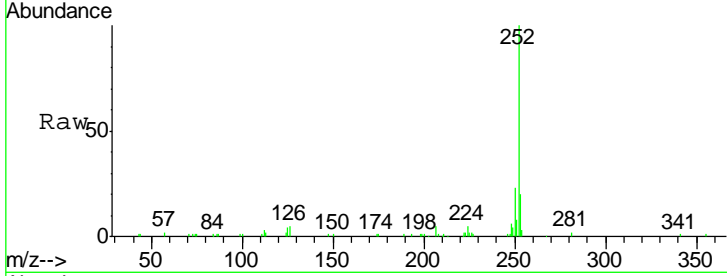
#89
 Benzo(k)fluoranthene
 Concen: 3.724 ng/ul
 RT: 24.52 min Scan# 3562
 Delta R.T. -0.01 min
 Lab File: BG028071.D
 Acq: 31 Jul 2017 15:27

Instrument :
 BNA_G
 ClientSampled :
 MDL-S-ML-02

Tgt Ion	Ratio	Lower	Upper
252	100		
253	19.8	17.1	25.7
125	4.4	5.4	8.0#

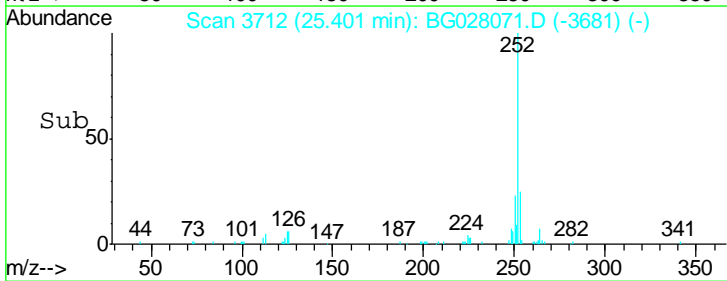
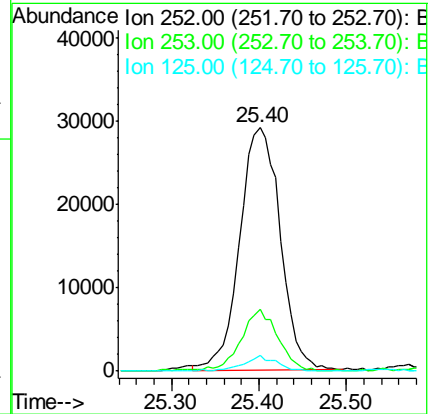
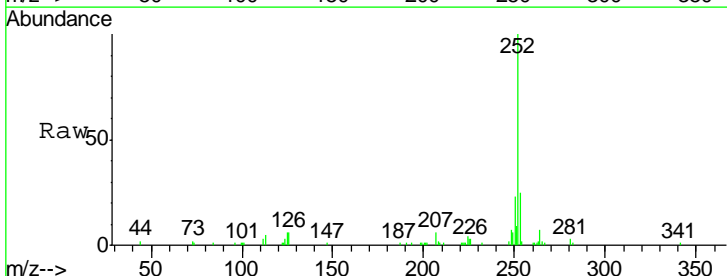
Manual Integrations
 APPROVED

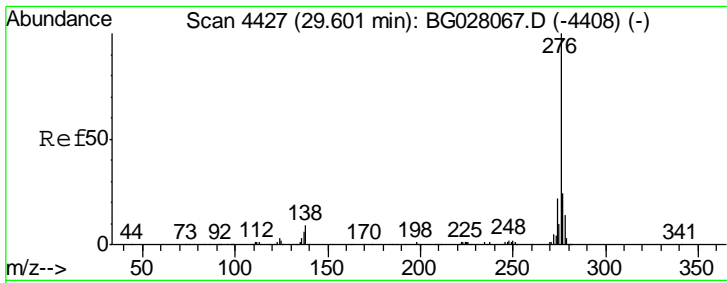
Sohil
 8/1/2017 2:55:11 PM



#91
 Benzo(a)pyrene
 Concen: 3.734 ng/ul
 RT: 25.40 min Scan# 3712
 Delta R.T. -0.02 min
 Lab File: BG028071.D
 Acq: 31 Jul 2017 15:27

Tgt Ion	Ratio	Lower	Upper
252	100		
253	25.2	17.2	25.8
125	6.2	5.8	8.6



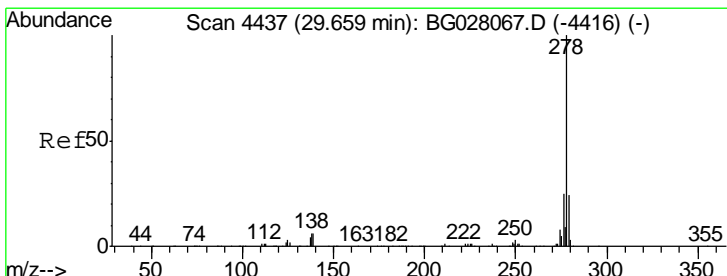
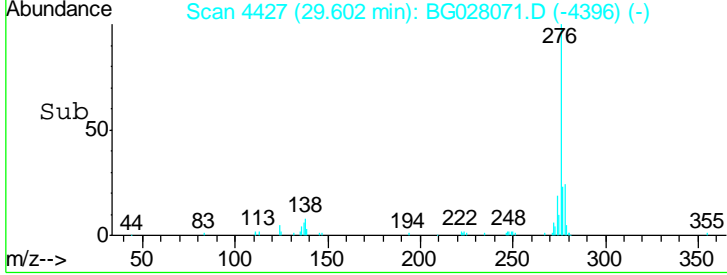
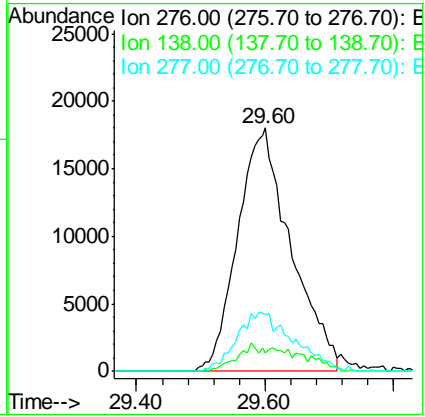
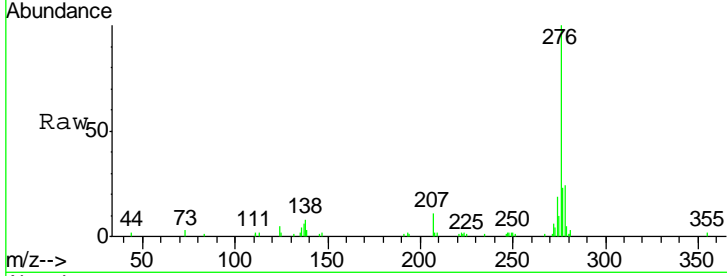


#92
 Indeno(1,2,3-cd)pyrene
 Concen: 3.523 ng/ul m
 RT: 29.60 min Scan# 4427
 Delta R.T. -0.02 min
 Lab File: BG028071.D
 Acq: 31 Jul 2017 15:27

Instrument :
 BNA_G
ClientSampled :
 MDL-S-ML-02

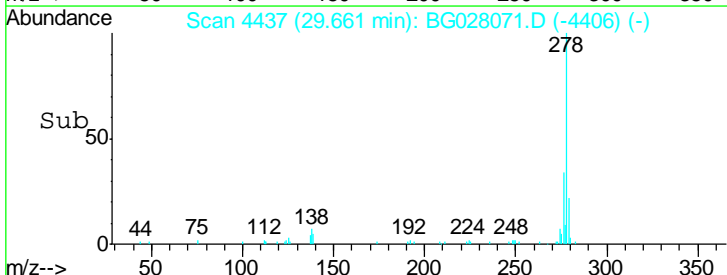
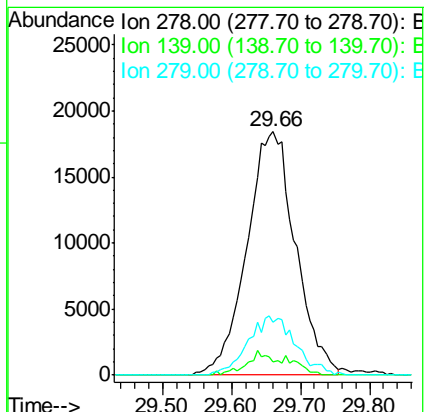
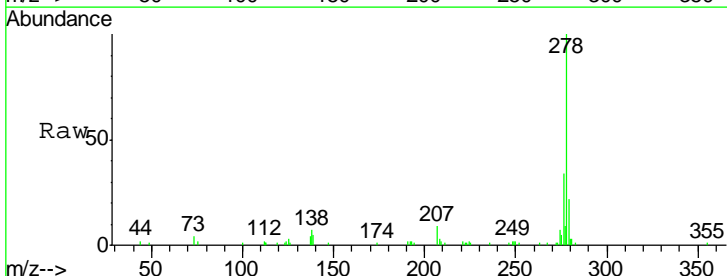
Tgt Ion	Resp	Lower	Upper
276	104254		
138	7.7	10.9	16.3#
277	23.1	18.9	28.3

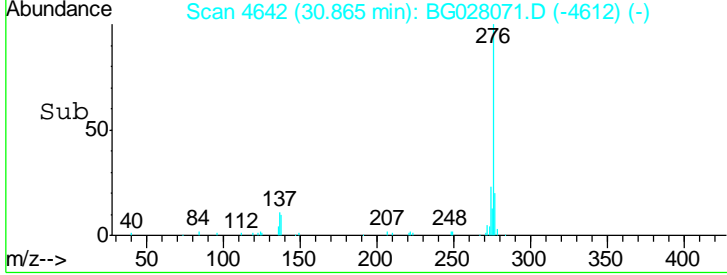
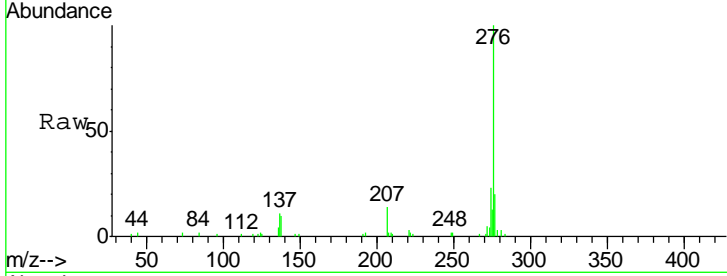
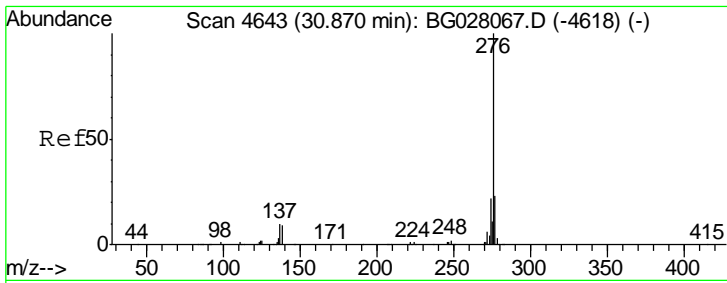
Manual Integrations
APPROVED
 Sohil
 8/1/2017 2:55:11 PM



#93
 Dibenzo(a,h)anthracene
 Concen: 3.548 ng/ul m
 RT: 29.66 min Scan# 4437
 Delta R.T. -0.02 min
 Lab File: BG028071.D
 Acq: 31 Jul 2017 15:27

Tgt Ion	Resp	Lower	Upper
278	90039		
139	5.3	9.0	13.4#
279	22.0	19.1	28.7





#94
 Benzo(g,h,i)perylene
 Concen: 3.525 ng/ul
 RT: 30.87 min Scan# 4642
 Delta R.T. -0.02 min
 Lab File: BG028071.D
 Acq: 31 Jul 2017 15:27

Tgt Ion	Resp	Lower	Upper
276	100		
138	9.7	11.2	16.8#
277	20.4	19.0	28.6

Instrument :
 BNA_G
ClientSampled :
 MDL-S-ML-02

Manual Integrations
APPROVED
 Sohil
 8/1/2017 2:55:11 PM

