

Data Path : Z:\SVOASRV\HPCHEM1\BNA G\DATA\BG073120\
 Data File : BG046128.D
 Acq On : 31 Jul 2020 16:46
 Operator : CG/JU
 Sample : L3491-08
 Misc :
 ALS Vial : 12 Sample Multiplier: 1

Instrument :
 BNA_G
 ClientSampleId :
 TP-1-D

Integration Parameters: rteint.p
 Integrator: RTE
 Smoothing : ON Filtering: 5
 Sampling : 1 Min Area: 3 % of largest Peak
 Start Thrs: 0.2 Max Peaks: 100
 Stop Thrs : 0 Peak Location: TOP

If leading or trailing edge < 100 prefer < Baseline drop else tangent >
 Peak separation: 5

Method : Z:\SVOASRV\HPCHEM1\BNA G\METHODS\8270-BG073020.M
 Title : ASP BNA STANDARDS FOR 5 POINT CALIBRATION

Signal : TIC

peak #	R.T. min	first scan	max scan	last scan	PK TY	peak height	corr. area	corr. % max.	% of total
1	3.158	8	12	23	rVB	293039	523761	12.64%	2.342%
2	5.074	331	338	345	rVB	24164	41574	1.00%	0.186%
3	5.538	409	417	435	rBV	959039	1527055	36.84%	6.829%
4	7.118	678	686	698	rBV	939069	1582950	38.19%	7.079%
5	7.547	755	759	772	rBV	43562	85898	2.07%	0.384%
6	7.953	821	828	836	rVB	329824	538067	12.98%	2.406%
7	9.104	1015	1024	1034	rBV	608315	1073215	25.89%	4.799%
8	10.749	1295	1304	1312	rBV	423400	758602	18.30%	3.392%
9	13.205	1715	1722	1731	rBV	1552239	2375011	57.30%	10.621%
10	13.487	1764	1770	1777	rBV	237264	372009	8.98%	1.664%
11	14.034	1856	1863	1871	rBV	224295	338315	8.16%	1.513%
12	14.580	1949	1956	1964	rBV2	673512	1035072	24.97%	4.629%
13	16.067	2202	2209	2217	rBV	1382238	2069093	49.92%	9.253%
14	17.318	2416	2422	2434	rBV	874648	1322889	31.92%	5.916%
15	18.999	2700	2708	2712	rBV	147007	200698	4.84%	0.898%
16	19.081	2718	2722	2730	rBV2	55602	83755	2.02%	0.375%
17	19.398	2773	2776	2782	rVB	59243	70006	1.69%	0.313%
18	19.939	2862	2868	2876	rBV	3111072	4144889	100.00%	18.536%
19	20.849	3019	3023	3029	rBV3	35065	53297	1.29%	0.238%
20	21.237	3085	3089	3098	rBV	319022	457336	11.03%	2.045%
21	21.566	3138	3145	3156	rBV	1108311	1736903	41.90%	7.767%
22	22.389	3281	3285	3293	rVB5	50715	100008	2.41%	0.447%
23	23.058	3395	3399	3407	rVB3	37912	62746	1.51%	0.281%
24	23.834	3527	3531	3539	rBV3	35166	72293	1.74%	0.323%
25	24.674	3665	3674	3684	rBV2	625429	1689503	40.76%	7.555%
26	25.855	3870	3875	3882	rBV6	18917	46711	1.13%	0.209%

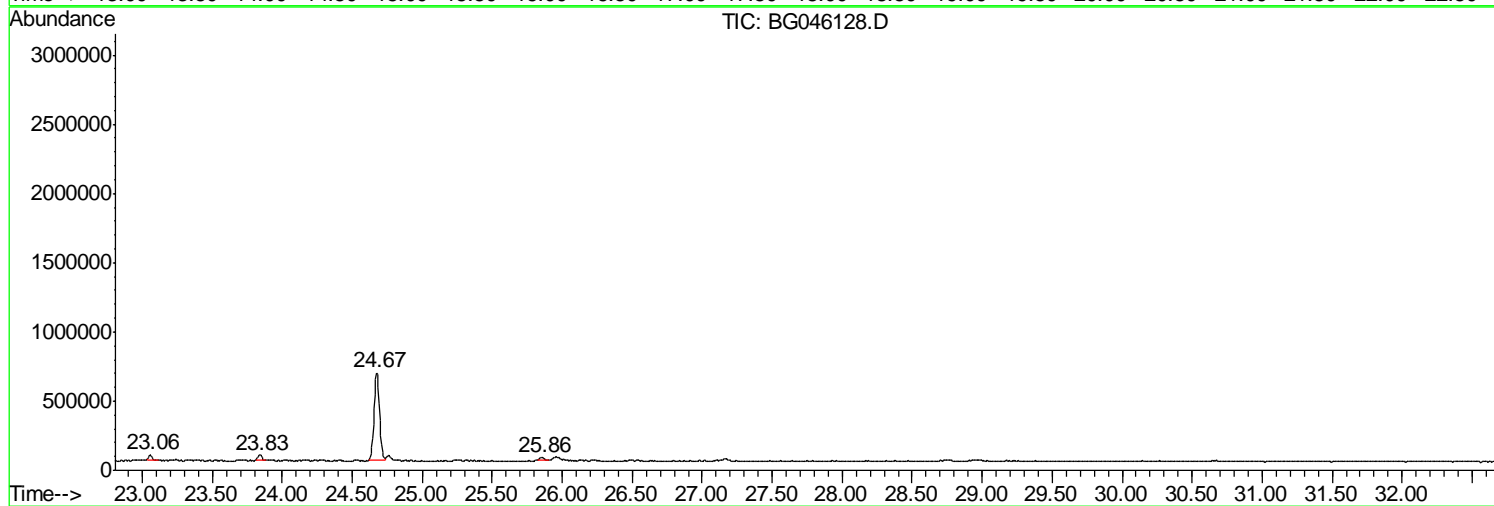
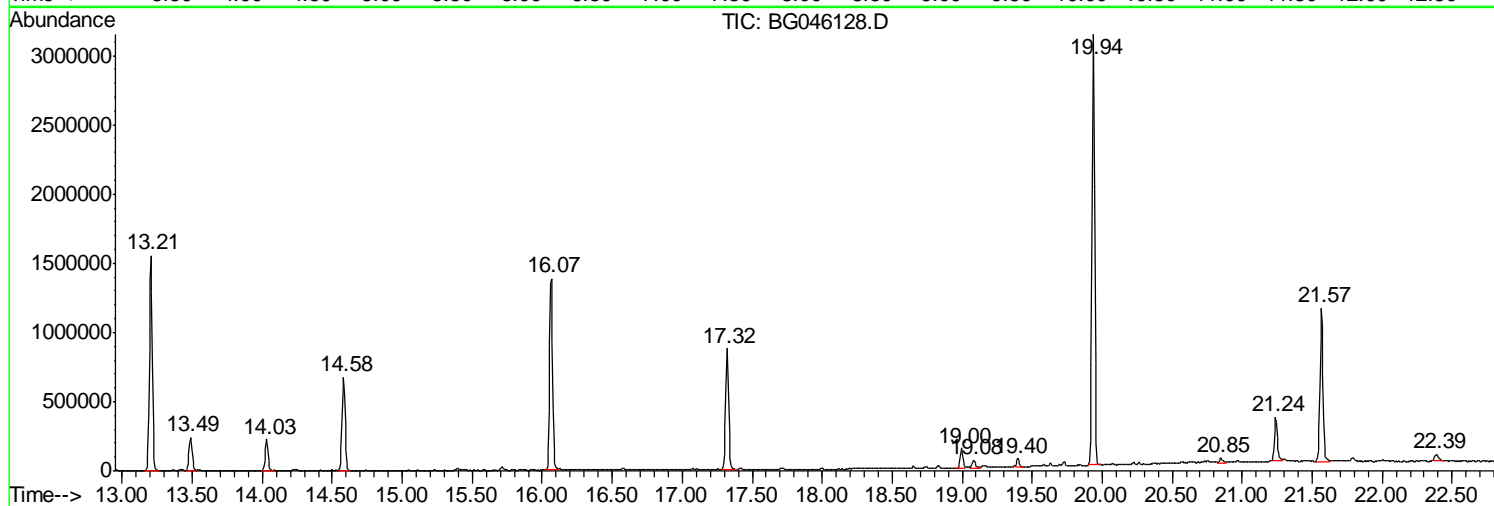
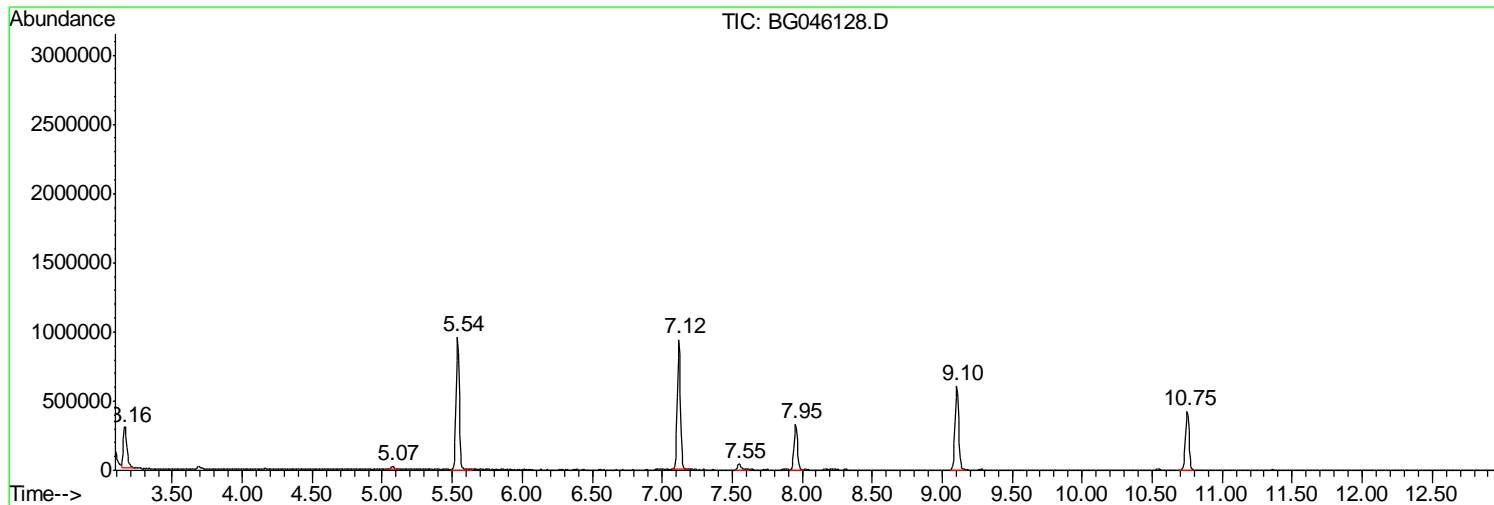
Sum of corrected areas: 22361656

Data Path : Z:\SVOASRV\HPCHEM1\BNA G\DATA\BG073120\
Data File : BG046128.D
Acq On : 31 Jul 2020 16:46
Operator : CG/JU
Sample : L3491-08
Misc :
ALS Vial : 12 Sample Multiplier: 1

Instrument :
BNA_G
ClientSampleId :
TP-1-D

Quant Method : Z:\SVOASRV\HPCHEM1\BNA G\METHODS\8270-BG073020.M
Quant Title : ASP BNA STANDARDS FOR 5 POINT CALIBRATION

TIC Library : C:\Database\NIST11.L
TIC Integration Parameters: LSCINT.P



Data Path : Z:\SVOASRV\HPCHEM1\BNA G\DATA\BG073120\
 Data File : BG046128.D
 Acq On : 31 Jul 2020 16:46
 Operator : CG/JU
 Sample : L3491-08
 Misc :
 ALS Vial : 12 Sample Multiplier: 1

Instrument :
 BNA_G
 ClientSampleID :
 TP-1-D

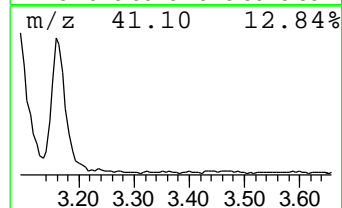
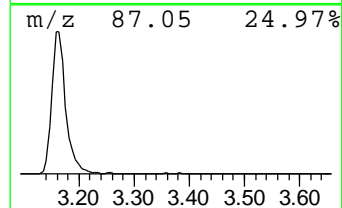
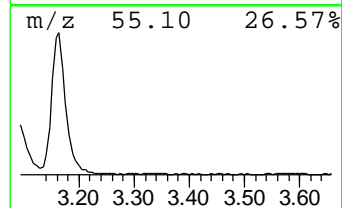
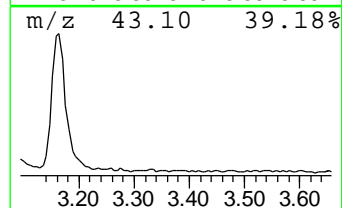
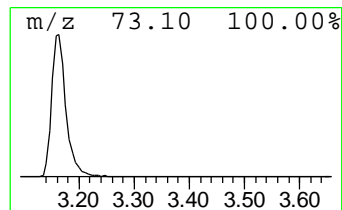
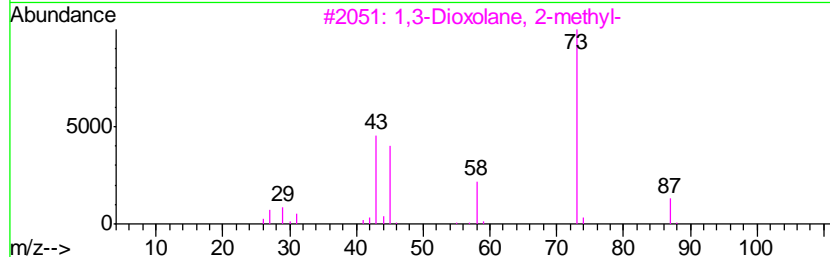
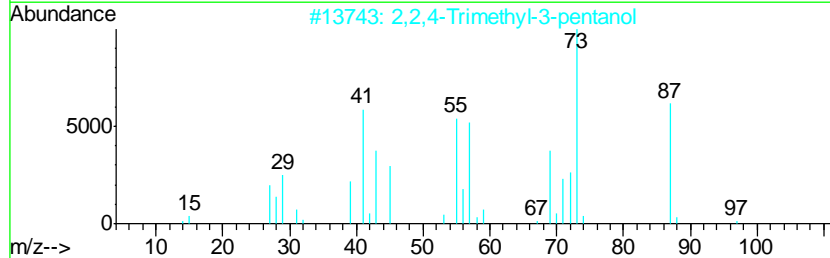
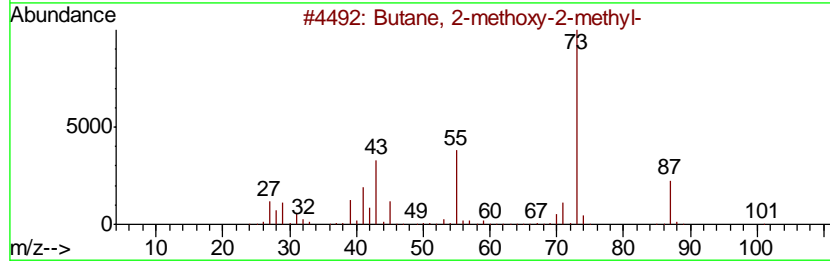
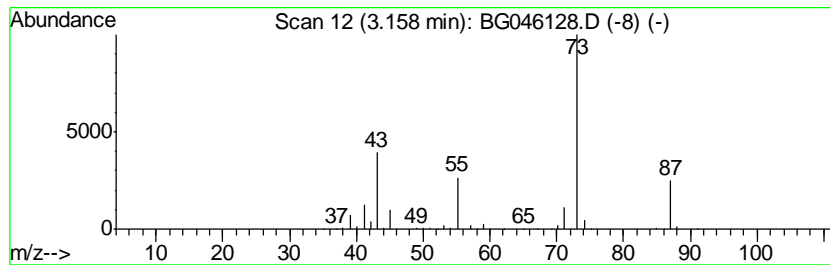
Quant Method : Z:\SVOASRV\HPCHEM1\BNA G\METHODS\8270-BG073020.M
 Quant Title : ASP BNA STANDARDS FOR 5 POINT CALIBRATION

TIC Library : C:\Database\NIST11.L
 TIC Integration Parameters: LSCINT.P

 Peak Number 1 Butane, 2-methoxy-2-methyl- Concentration Rank 1

R.T.	EstConc	Area	Relative to ISTD	R.T.
3.16	19.47 ng	523761	1,4-Dichlorobenzene-d4	7.95

Hit#	of	Tentative ID	MW	MolForm	CAS#	Qual
1	5	Butane, 2-methoxy-2-methyl-	102	C6H14O	000994-05-8	78
2		2,2,4-Trimethyl-3-pentanol	130	C8H18O	005162-48-1	40
3		1,3-Dioxolane, 2-methyl-	88	C4H8O2	000497-26-7	32
4		Silane, tetramethyl-	88	C4H12Si	000075-76-3	17
5		Pentane, 3-methoxy-	102	C6H14O	036839-67-5	12



Data Path : Z:\SVOASRV\HPCHEM1\BNA G\DATA\BG073120\
 Data File : BG046128.D
 Acq On : 31 Jul 2020 16:46
 Operator : CG/JU
 Sample : L3491-08
 Misc :
 ALS Vial : 12 Sample Multiplier: 1

Instrument :
 BNA_G
 ClientSampled :
 TP-1-D

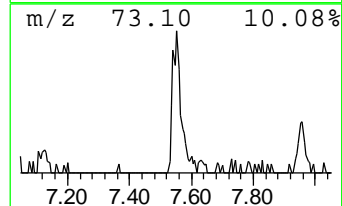
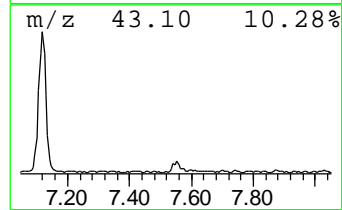
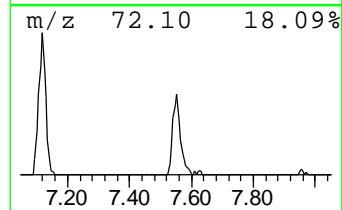
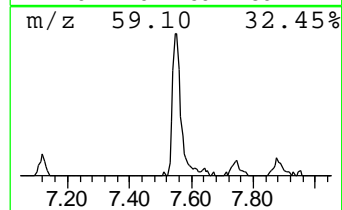
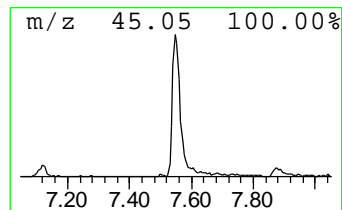
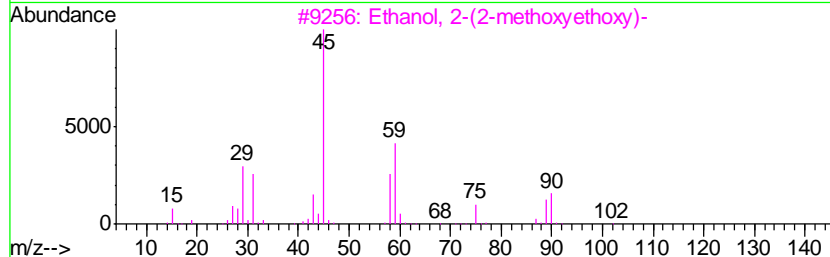
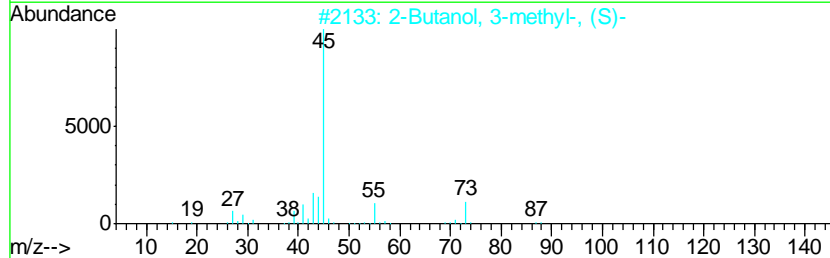
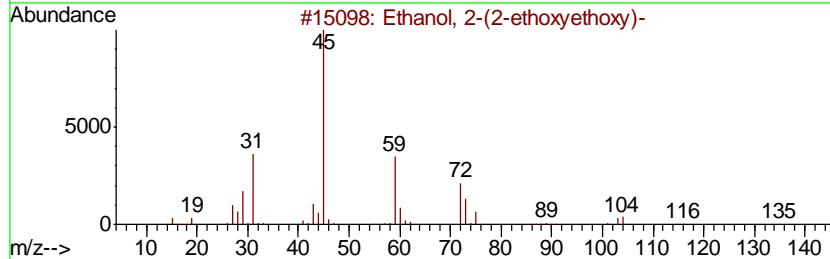
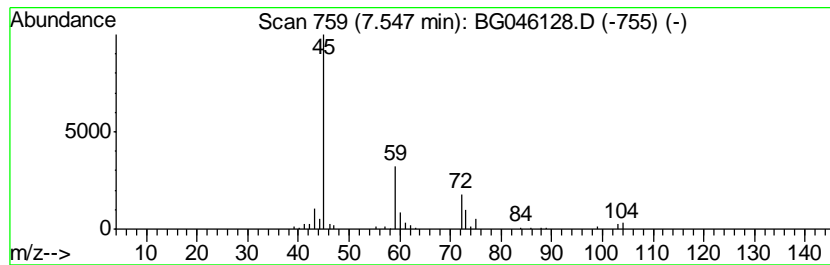
Quant Method : Z:\SVOASRV\HPCHEM1\BNA G\METHODS\8270-BG073020.M
 Quant Title : ASP BNA STANDARDS FOR 5 POINT CALIBRATION

TIC Library : C:\Database\NIST11.L
 TIC Integration Parameters: LSCINT.P

 Peak Number 2 Ethanol, 2-(2-ethoxyethoxy)- Concentration Rank 4

R.T.	EstConc	Area	Relative to ISTD	R.T.
7.55	3.19 ng	85898	1,4-Dichlorobenzene-d4	7.95

Hit#	of	Tentative ID	MW	MolForm	CAS#	Qual
1	5	Ethanol, 2-(2-ethoxyethoxy)-	134	C6H14O3	000111-90-0	83
2		2-Butanol, 3-methyl-, (S)-	88	C5H12O	001517-66-4	50
3		Ethanol, 2-(2-methoxyethoxy)-	120	C5H12O3	000111-77-3	45
4		Butane, 1-methoxy-	88	C5H12O	000628-28-4	38
5		(S)-(+)-1,2-Propanediol	76	C3H8O2	004254-15-3	38



Data Path : Z:\SVOASRV\HPCHEM1\BNA G\DATA\BG073120\
 Data File : BG046128.D
 Acq On : 31 Jul 2020 16:46
 Operator : CG/JU
 Sample : L3491-08
 Misc :
 ALS Vial : 12 Sample Multiplier: 1

Instrument :
 BNA_G
 ClientSampled :
 TP-1-D

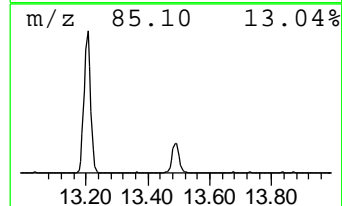
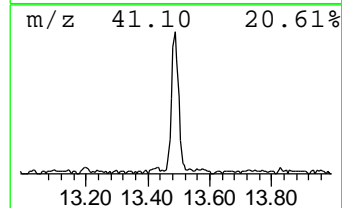
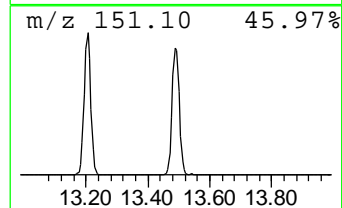
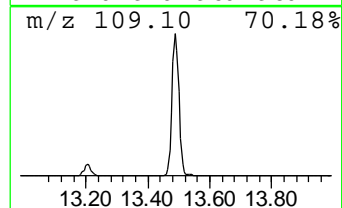
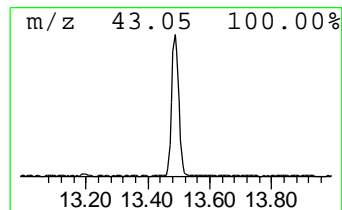
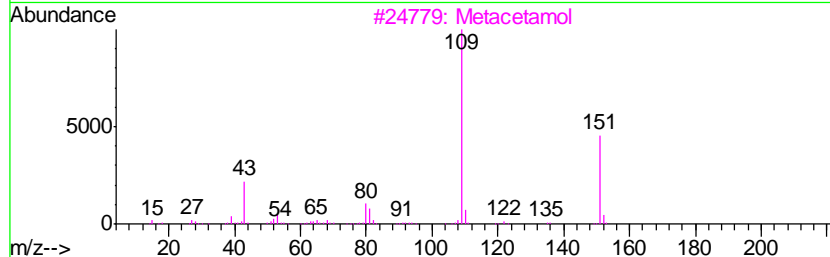
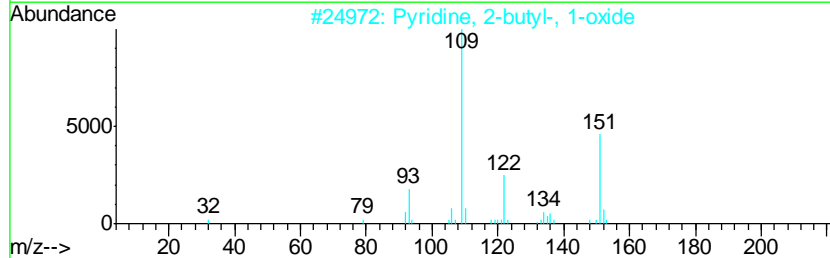
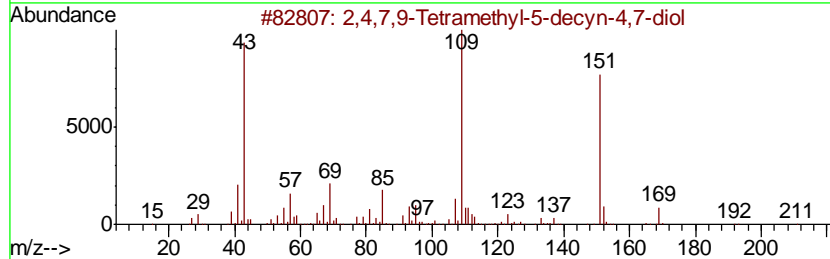
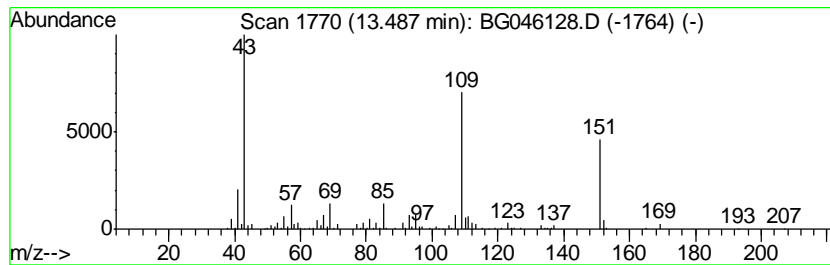
Quant Method : Z:\SVOASRV\HPCHEM1\BNA G\METHODS\8270-BG073020.M
 Quant Title : ASP BNA STANDARDS FOR 5 POINT CALIBRATION

TIC Library : C:\Database\NIST11.L
 TIC Integration Parameters: LSCINT.P

 Peak Number 3 2,4,7,9-Tetramethyl-5-decyn... Concentration Rank 2

R.T.	EstConc	Area	Relative to ISTD	R.T.
13.49	7.19 ng	372009	Acenaphthene-d10	14.58

Hit#	of	Tentative ID	MW	MolForm	CAS#	Qual
1	5	2,4,7,9-Tetramethyl-5-decyn-4,7-...	226	C14H26O2	000126-86-3	90
2		Pyridine, 2-butyl-, 1-oxide	151	C9H13NO	031396-32-4	59
3		Metacetamol	151	C8H9NO2	000621-42-1	52
4		3-Pyridinol, 4-methyl-, acetate ...	151	C8H9NO2	001006-96-8	50
5		Butanamide, N-acetyl-N-(4-hydrox...	221	C12H15NO3	1000107-08-7	50



Data Path : Z:\SVOASRV\HPCHEM1\BNA G\DATA\BG073120\
 Data File : BG046128.D
 Acq On : 31 Jul 2020 16:46
 Operator : CG/JU
 Sample : L3491-08
 Misc :
 ALS Vial : 12 Sample Multiplier: 1

Instrument :
 BNA_G
 ClientSampleID :
 TP-1-D

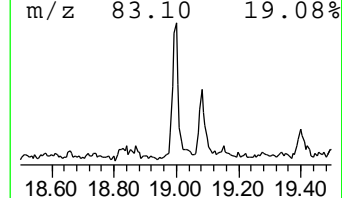
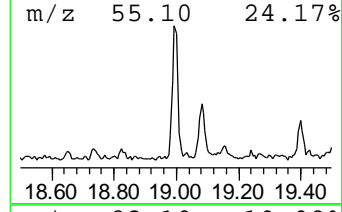
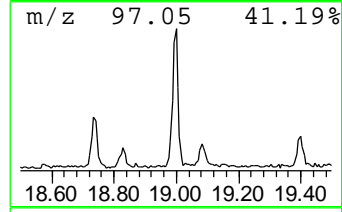
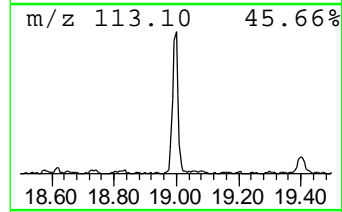
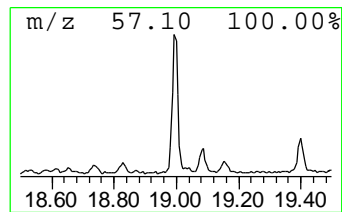
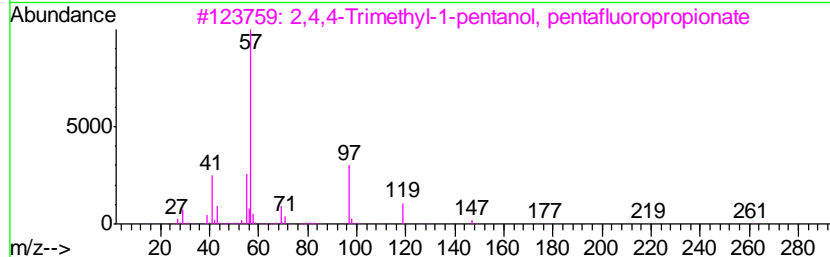
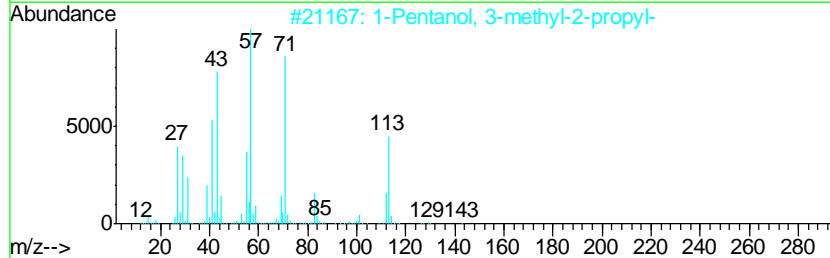
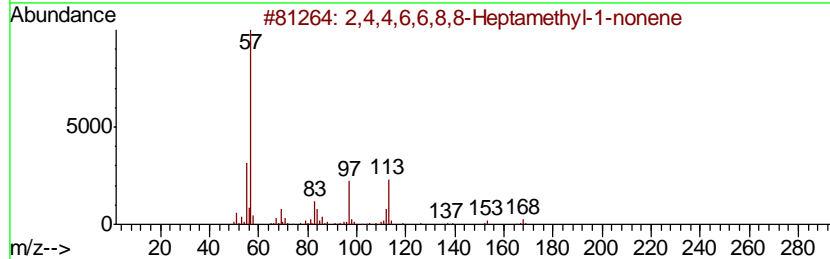
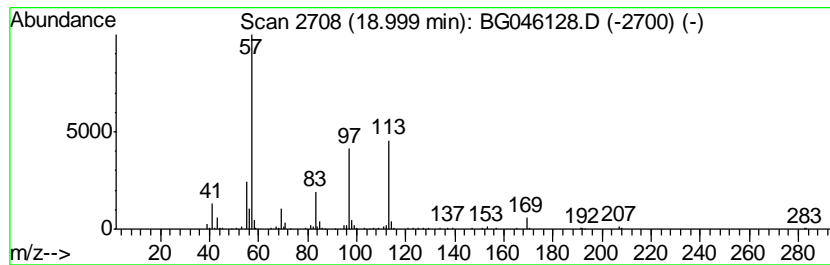
Quant Method : Z:\SVOASRV\HPCHEM1\BNA G\METHODS\8270-BG073020.M
 Quant Title : ASP BNA STANDARDS FOR 5 POINT CALIBRATION

TIC Library : C:\Database\NIST11.L
 TIC Integration Parameters: LSCINT.P

 Peak Number 4 2,4,4,6,6,8,8-Heptamethyl-1... Concentration Rank 5

R.T.	EstConc	Area	Relative to ISTD	R.T.
19.00	3.03 ng	200698	Phenanthrene-d10	17.32

Hit#	of	Tentative ID	MW	MolForm	CAS#	Qual
1	5	2,4,4,6,6,8,8-Heptamethyl-1-nonene	224	C16H32	015796-04-0	64
2		1-Pentanol, 3-methyl-2-propyl-	144	C9H20O	054004-40-9	40
3		2,4,4-Trimethyl-1-pentanol, pent...	276	C11H17F5O2	1000365-51-0	27
4		2-Chloropropionic acid, hexadec...	332	C19H37ClO2	086711-81-1	27
5		2,4,4-Trimethyl-1-pentanol, trif...	226	C10H17F3O2	1000365-19-5	25



Data Path : Z:\SVOASRV\HPCHEM1\BNA G\DATA\BG073120\
 Data File : BG046128.D
 Acq On : 31 Jul 2020 16:46
 Operator : CG/JU
 Sample : L3491-08
 Misc :
 ALS Vial : 12 Sample Multiplier: 1

Instrument :
 BNA_G
 ClientSampleID :
 TP-1-D

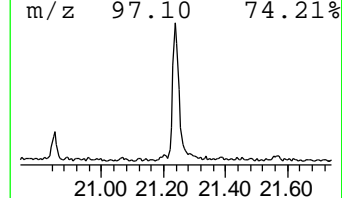
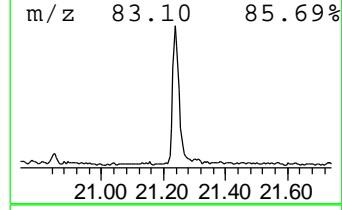
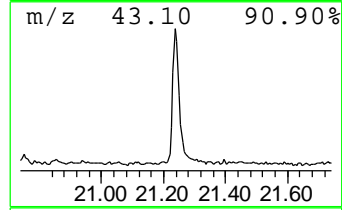
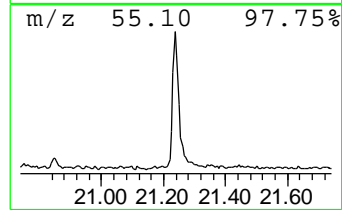
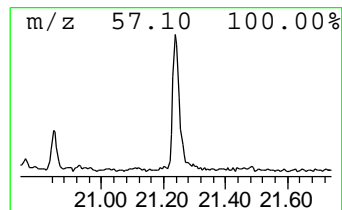
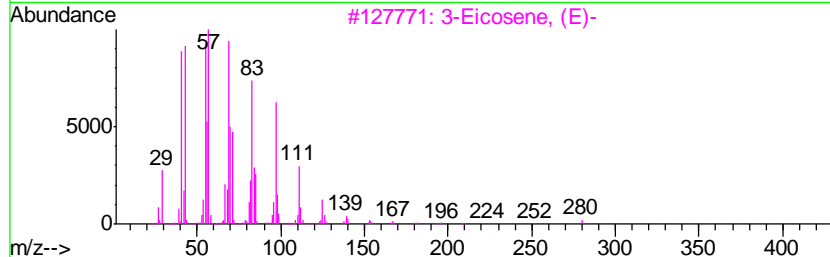
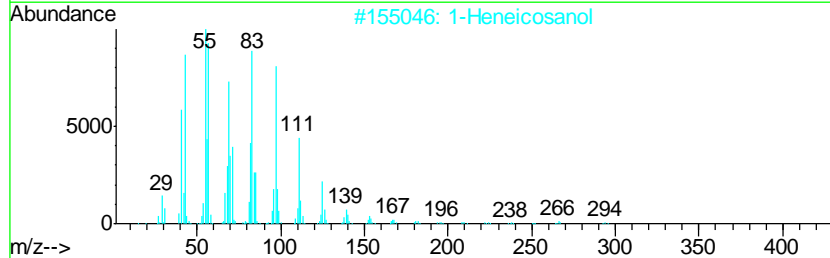
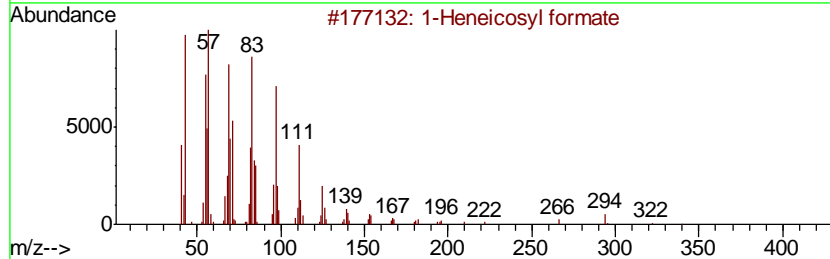
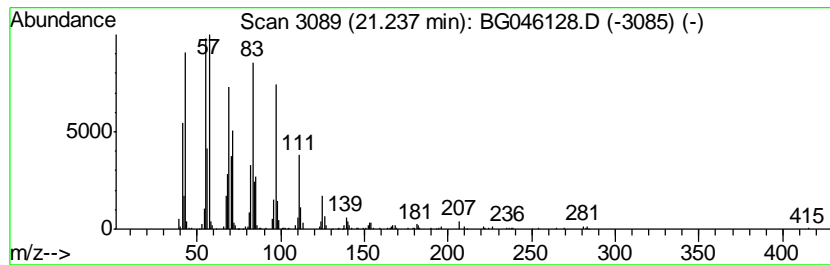
Quant Method : Z:\SVOASRV\HPCHEM1\BNA G\METHODS\8270-BG073020.M
 Quant Title : ASP BNA STANDARDS FOR 5 POINT CALIBRATION

TIC Library : C:\Database\NIST11.L
 TIC Integration Parameters: LSCINT.P

 Peak Number 5 1-Heneicosyl formate Concentration Rank 3

R.T.	EstConc	Area	Relative to ISTD	R.T.
21.24	5.27 ng	457336	Chrysene-d12	21.57

Hit#	of	Tentative ID	MW	MolForm	CAS#	Qual
1	5	1-Heneicosyl formate	340	C22H44O2	077899-03-7	94
2		1-Heneicosanol	312	C21H44O	015594-90-8	93
3		3-Eicosene, (E)-	280	C20H40	074685-33-9	91
4		Octacosanol	410	C28H58O	000557-61-9	91
5		Heptadecyl trifluoroacetate	352	C19H35F3O2	1000351-87-0	91



Data Path : Z:\SVOASRV\HPCHEM1\BNA_G\DATA\BG073120\
 Data File : BG046128.D
 Acq On : 31 Jul 2020 16:46
 Operator : CG/JU
 Sample : L3491-08
 Misc :
 ALS Vial : 12 Sample Multiplier: 1

Instrument :
 BNA_G
 ClientSampleId :
 TP-1-D

Quant Method : Z:\SVOASRV\HPCHEM1\BNA_G\METHODS\8270-BG073020.M
 Quant Title : ASP BNA STANDARDS FOR 5 POINT CALIBRATION

TIC Library : C:\Database\NIST11.L
 TIC Integration Parameters: LSCINT.P

TIC Top Hit name	RT	EstConc	Units	Response	--Internal Standard--			
					#	RT	Resp	Conc
Butane, 2-methoxy...	3.16	19.5	ng	523761	1	7.95	538067	20.0
Ethanol, 2-(2-eth...	7.55	3.2	ng	85898	1	7.95	538067	20.0
2,4,7,9-Tetrameth...	13.49	7.2	ng	372009	3	14.58	1035070	20.0
2,4,4,6,6,8,8-Hep...	19.00	3.0	ng	200698	4	17.32	1322890	20.0
1-Heneicosyl formate	21.24	5.3	ng	457336	5	21.57	1736900	20.0