

Data Path : Z:\HPCHEM1\BNA_G\DATA\BG080217\
 Data File : BG028120.D
 Acq On : 2 Aug 2017 22:37
 Operator : SJ/JU
 Sample : I4405-09
 Misc :
 ALS Vial : 19 Sample Multiplier: 1

Instrument :
 BNA_G
 ClientSampleId :
 JJ2X6

Quant Time: Aug 03 00:50:40 2017
 Quant Method : Z:\HPCHEM1\BNA_G\METHODS\SOM-EPA-BG080217.M
 Quant Title : SVOA CALIBRATION
 QLast Update : Wed Aug 02 15:01:36 2017
 Response via : Initial Calibration

| Internal Standards | R.T. | QIon | Response | Conc | Units | Dev(Min) |
|---------------------------|-------|------|----------|-------|-------|----------|
| 1) 1,4-Dichlorobenzene-d4 | 8.36 | 152 | 33659 | 20.00 | ng/ul | 0.00 |
| 18) Naphthalene-d8 | 11.18 | 136 | 165099 | 20.00 | ng/ul | 0.00 |
| 35) Acenaphthene-d10 | 14.97 | 164 | 127434 | 20.00 | ng/ul | 0.00 |
| 61) Phenanthrene-d10 | 17.72 | 188 | 322348 | 20.00 | ng/ul | 0.00 |
| 75) Chrysene-d12 | 22.05 | 240 | 321033 | 20.00 | ng/ul | 0.00 |
| 83) Perylene-d12 | 25.56 | 264 | 312169 | 20.00 | ng/ul | 0.00 |

System Monitoring Compounds

| | | | | | | |
|--------------------------------|-------|-----|--------|-------|-------|------|
| 3) 1,4-Dioxane-d8 | 3.85 | 96 | 2278 | 3.15 | ng/uL | 0.00 |
| 5) Phenol-d5 | 7.51 | 99 | 65528 | 17.73 | ng/ul | 0.00 |
| 7) Bis-(2-Chloroethyl)ether-d | 7.68 | 67 | 45002 | 19.22 | ng/ul | 0.00 |
| 9) 2-Chlorophenol-d4 | 7.89 | 132 | 45705 | 19.60 | ng/ul | 0.00 |
| 13) 4-Methylphenol-d8 | 9.05 | 113 | 58313 | 18.87 | ng/ul | 0.00 |
| 19) Nitrobenzene-d5 | 9.53 | 128 | 25859 | 20.03 | ng/ul | 0.00 |
| 22) 2-Nitrophenol-d4 | 10.26 | 143 | 30728 | 21.71 | ng/ul | 0.00 |
| 26) 2,4-Dichlorophenol-d3 | 10.79 | 165 | 57623 | 19.68 | ng/ul | 0.00 |
| 29) 4-Chloroaniline-d4 | 11.31 | 131 | 46874 | 14.38 | ng/ul | 0.00 |
| 43) Dimethylphthalate-d6 | 14.36 | 166 | 241078 | 21.27 | ng/ul | 0.00 |
| 46) Acenaphthylene-d8 | 14.66 | 160 | 273916 | 21.43 | ng/ul | 0.00 |
| 51) 4-Nitrophenol-d4 | 15.16 | 143 | 19011 | 10.55 | ng/ul | 0.00 |
| 57) Fluorene-d10 | 15.96 | 176 | 216572 | 21.30 | ng/ul | 0.00 |
| 62) 4,6-Dinitro-2-methylphenol | 16.07 | 200 | 32582 | 15.56 | ng/ul | 0.00 |
| 70) Anthracene-d10 | 17.82 | 188 | 359891 | 23.28 | ng/ul | 0.00 |
| 76) Pyrene-d10 | 20.09 | 212 | 411356 | 24.99 | ng/ul | 0.00 |
| 87) Benzo(a)pyrene-d12 | 25.32 | 264 | 340108 | 23.27 | ng/ul | 0.00 |

Target Compounds

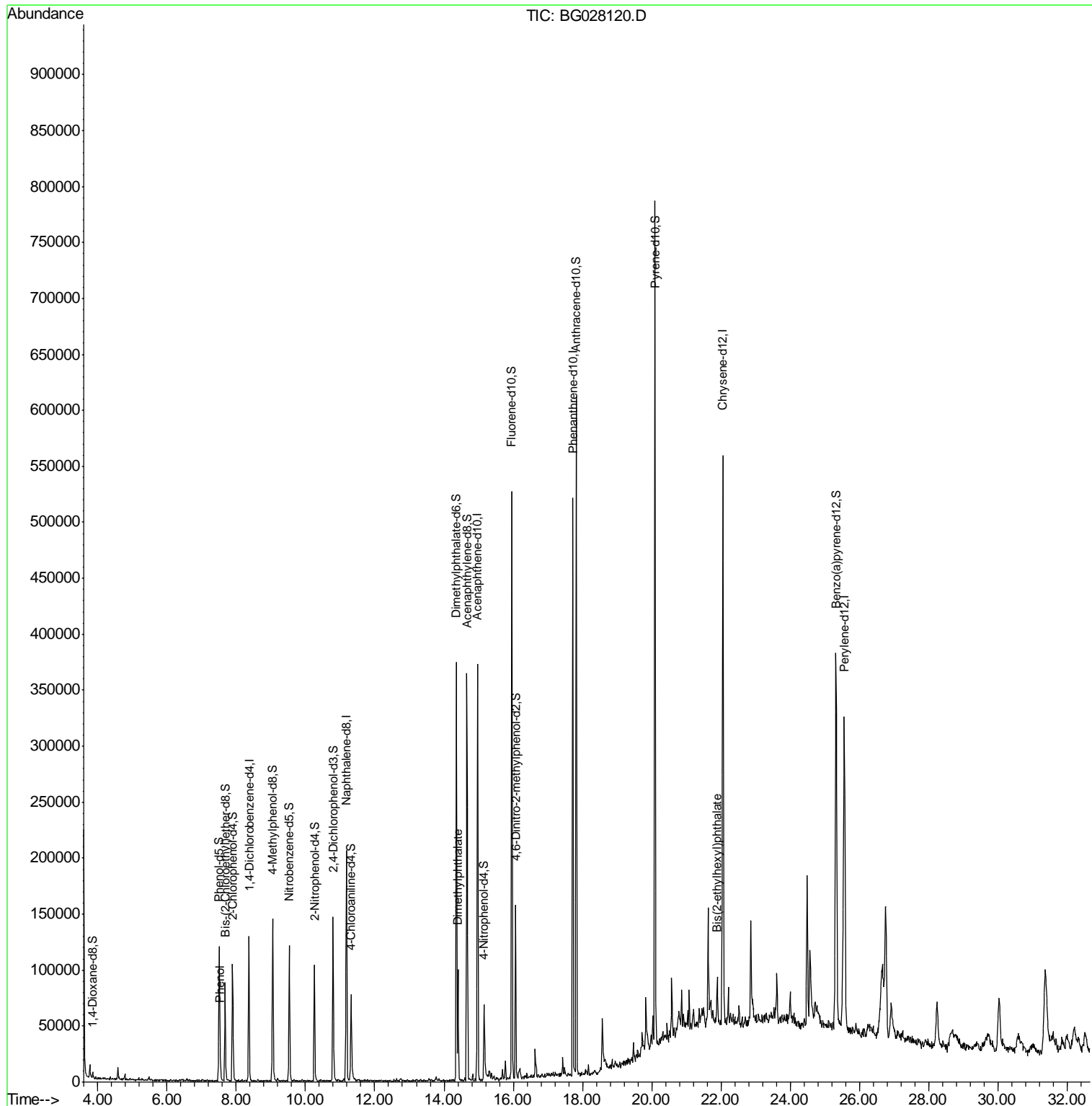
| | | | | | Qvalue |
|--------------------------------|-------|-----|-------|--------------|--------|
| 6) Phenol | 7.54 | 94 | 11093 | 3.019 ng/ul# | 75 |
| 44) Dimethylphthalate | 14.40 | 163 | 58865 | 5.641 ng/ul | 99 |
| 81) Bis(2-ethylhexyl)phthalate | 21.89 | 149 | 17511 | 1.716 ng/ul# | 96 |

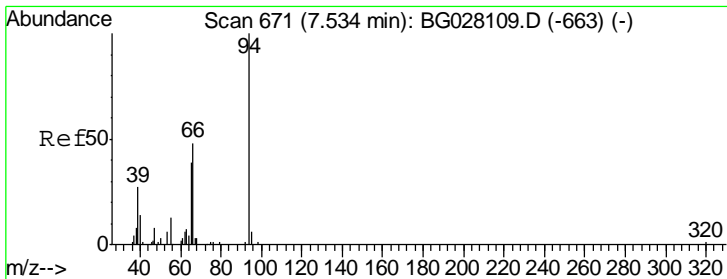
(#) = qualifier out of range (m) = manual integration (+) = signals summed

Data Path : Z:\HPCHEM1\BNA_G\DATA\BG080217\
 Data File : BG028120.D
 Acq On : 2 Aug 2017 22:37
 Operator : SJ/JU
 Sample : I4405-09
 Misc :
 ALS Vial : 19 Sample Multiplier: 1

Instrument :
 BNA_G
 ClientSampled :
 JJ2X6

Quant Time: Aug 03 00:50:40 2017
 Quant Method : Z:\HPCHEM1\BNA_G\METHODS\SOM-EPA-BG080217.M
 Quant Title : SVOA CALIBRATION
 QLast Update : Wed Aug 02 15:01:36 2017
 Response via : Initial Calibration

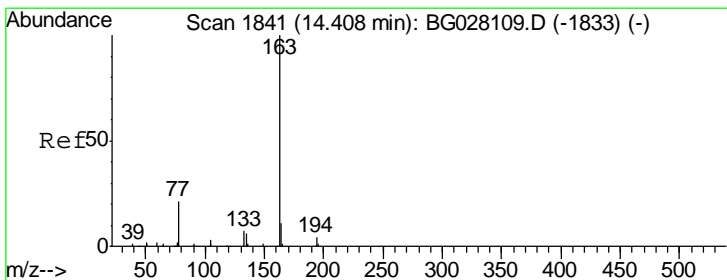
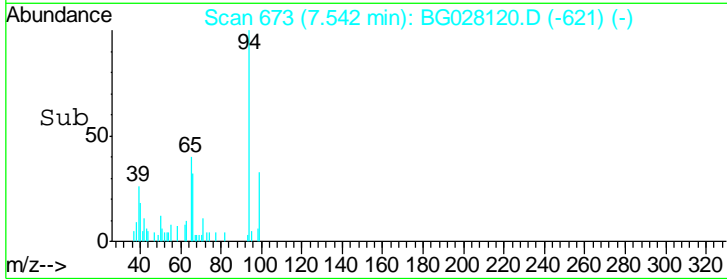
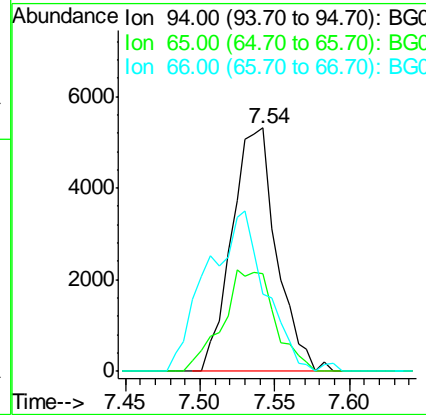
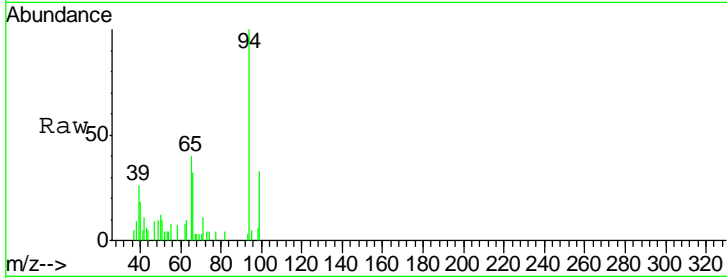




#6
 Phenol
 Concen: 3.019 ng/ul
 RT: 7.54 min Scan# 673
 Delta R.T. 0.01 min
 Lab File: BG028120.D
 Acq: 2 Aug 2017 22:37

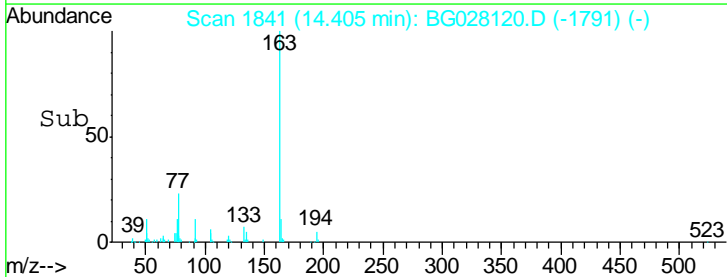
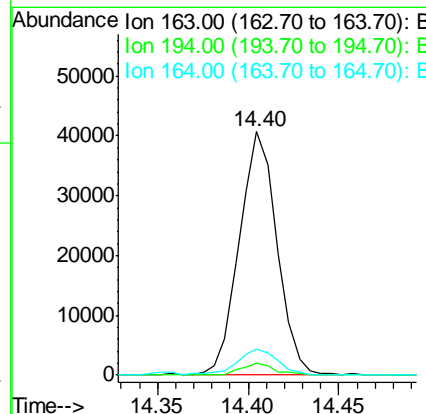
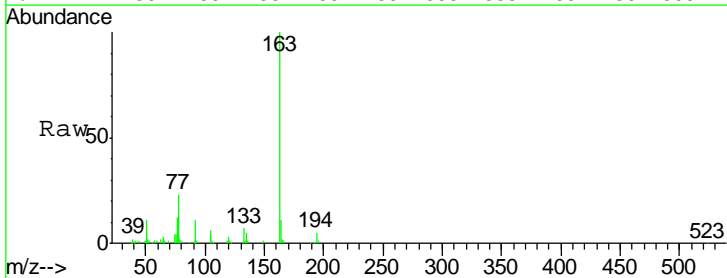
Instrument :
 BNA_G
 ClientSampled :
 JJ2X6

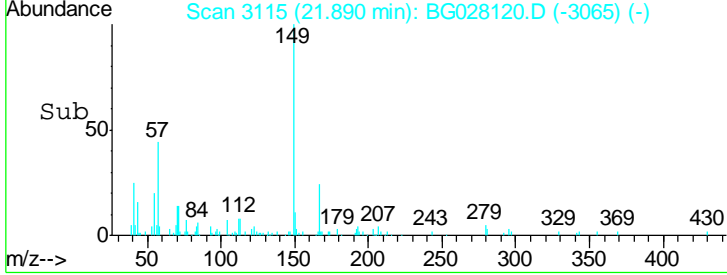
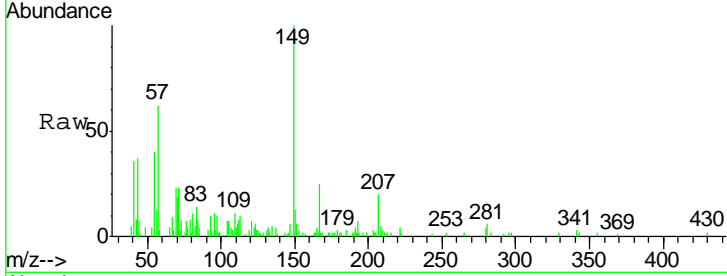
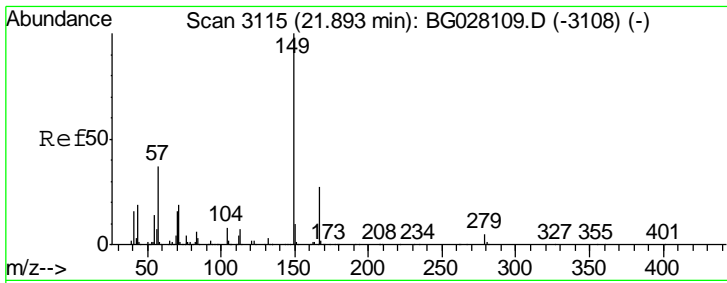
| Tgt Ion | Resp | Lower | Upper |
|---------|-------|-------|-------|
| 94 | 11093 | | |
| 65 | 40.1 | 26.8 | 40.2 |
| 66 | 31.6 | 44.4 | 66.6# |



#44
 Dimethylphthalate
 Concen: 5.641 ng/ul
 RT: 14.40 min Scan# 1841
 Delta R.T. -0.01 min
 Lab File: BG028120.D
 Acq: 2 Aug 2017 22:37

| Tgt Ion | Resp | Lower | Upper |
|---------|-------|-------|-------|
| 163 | 58865 | | |
| 194 | 4.7 | 3.4 | 5.0 |
| 164 | 10.6 | 9.0 | 13.4 |





#81
 Bis(2-ethylhexyl)phthalate
 Concen: 1.716 ng/ul
 RT: 21.89 min Scan# 3115
 Delta R.T. -0.01 min
 Lab File: BG028120.D
 Acq: 2 Aug 2017 22:37

Instrument :
 BNA_G
 ClientSampleId :
 JJ2X6

| Tgt Ion | Resp | Lower | Upper |
|---------|-------|-------|-------|
| 149 | 17511 | | |
| 167 | 25.0 | 21.8 | 32.8 |
| 279 | 4.3 | 4.5 | 6.7# |

