

Data Path : Z:\HPCHEM1\BNA\_G\DATA\BG080217\  
 Data File : BG028137.D  
 Acq On : 3 Aug 2017 12:12  
 Operator : SJ/JU  
 Sample : I4373-08  
 Misc :  
 ALS Vial : 36 Sample Multiplier: 1

Instrument :  
 BNA\_G  
 ClientSampleId :  
 C0AA5

Quant Time: Aug 03 14:04:05 2017  
 Quant Method : Z:\HPCHEM1\BNA\_G\METHODS\SOM-EPA-BG080217.M  
 Quant Title : SVOA CALIBRATION  
 QLast Update : Thu Aug 03 02:34:14 2017  
 Response via : Initial Calibration

Internal Standards	R.T.	QIon	Response	Conc	Units	Dev(Min)
1) 1,4-Dichlorobenzene-d4	8.36	152	43505	20.00	ng/ul	0.00
18) Naphthalene-d8	11.18	136	223518	20.00	ng/ul	0.00
35) Acenaphthene-d10	14.97	164	160914	20.00	ng/ul	0.00
61) Phenanthrene-d10	17.72	188	370236	20.00	ng/ul	0.00
75) Chrysene-d12	22.05	240	369398	20.00	ng/ul	0.00
83) Perylene-d12	25.57	264	369921	20.00	ng/ul	0.00

## System Monitoring Compounds

3) 1,4-Dioxane-d8	3.85	96	2136	2.29	ng/uL	0.00
5) Phenol-d5	7.51	99	77732	16.27	ng/ul	0.00
7) Bis-(2-Chloroethyl)ether-d	7.68	67	51331	16.96	ng/ul	0.00
9) 2-Chlorophenol-d4	7.89	132	55081	18.27	ng/ul	0.00
13) 4-Methylphenol-d8	9.06	113	55481	13.89	ng/ul	0.00
19) Nitrobenzene-d5	9.53	128	30418	17.40	ng/ul	0.00
22) 2-Nitrophenol-d4	10.26	143	36380	18.98	ng/ul	0.00
26) 2,4-Dichlorophenol-d3	10.80	165	69741	17.59	ng/ul	0.00
29) 4-Chloroaniline-d4	11.32	131	49241	11.16	ng/ul	0.00
43) Dimethylphthalate-d6	14.36	166	247989	17.33	ng/ul	0.00
46) Acenaphthylene-d8	14.67	160	293590	18.19	ng/ul	0.00
51) 4-Nitrophenol-d4	15.17	143	24841	10.92	ng/ul	0.02
57) Fluorene-d10	15.96	176	214226	16.68	ng/ul	0.00
62) 4,6-Dinitro-2-methylphenol	16.07	200	34417	14.31	ng/ul	0.00
70) Anthracene-d10	17.82	188	321891	18.13	ng/ul	0.00
76) Pyrene-d10	20.09	212	357301	18.86	ng/ul	0.00
87) Benzo(a)pyrene-d12	25.33	264	318901	18.41	ng/ul	0.00

## Target Compounds

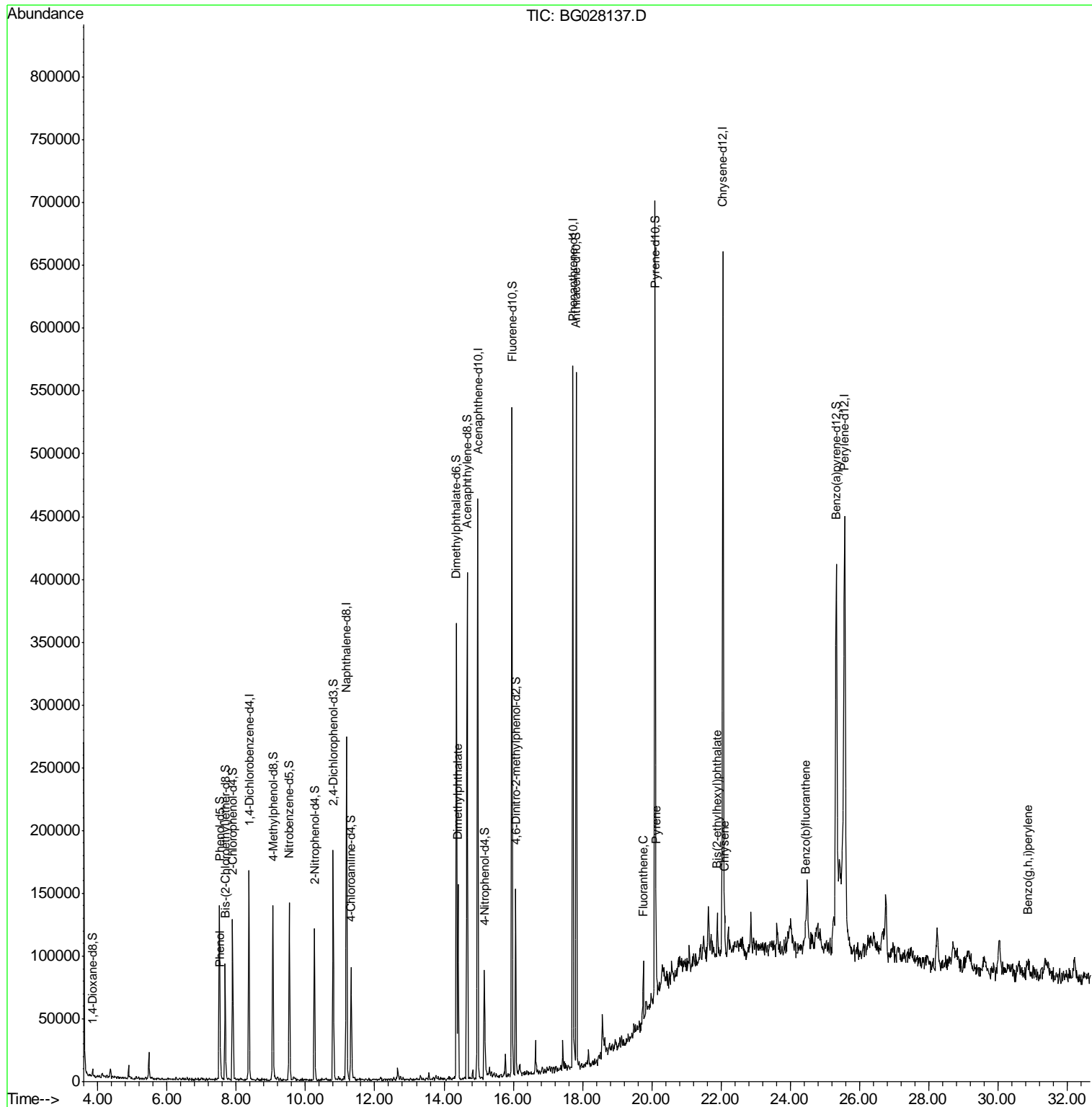
					Qvalue
6) Phenol	7.54	94	9434	1.987	ng/ul 92
44) Dimethylphthalate	14.40	163	94291	7.155	ng/ul 99
74) Fluoranthene	19.76	202	30419	1.343	ng/ul 97
77) Pyrene	20.12	202	27677	1.256	ng/ul# 94
81) Bis(2-ethylhexyl)phthalate	21.89	149	12623	1.075	ng/ul 97
82) Chrysene	22.10	228	20145	1.048	ng/ul# 88
85) Benzo(b)fluoranthene	24.45	252	30789	1.391	ng/ul# 95
91) Benzo(g,h,i)perylene	30.87	276	28306	1.371	ng/ul# 87

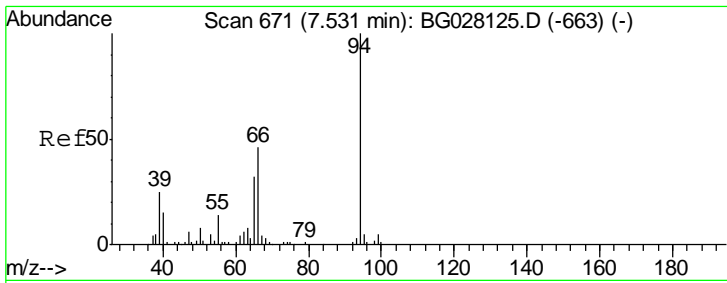
(#) = qualifier out of range (m) = manual integration (+) = signals summed

Data Path : Z:\HPCHEM1\BNA\_G\DATA\BG080217\  
 Data File : BG028137.D  
 Acq On : 3 Aug 2017 12:12  
 Operator : SJ/JU  
 Sample : I4373-08  
 Misc :  
 ALS Vial : 36 Sample Multiplier: 1

Instrument :  
 BNA\_G  
 ClientSampled :  
 C0AA5

Quant Time: Aug 03 14:04:05 2017  
 Quant Method : Z:\HPCHEM1\BNA\_G\METHODS\SOM-EPA-BG080217.M  
 Quant Title : SVOA CALIBRATION  
 QLast Update : Thu Aug 03 02:34:14 2017  
 Response via : Initial Calibration

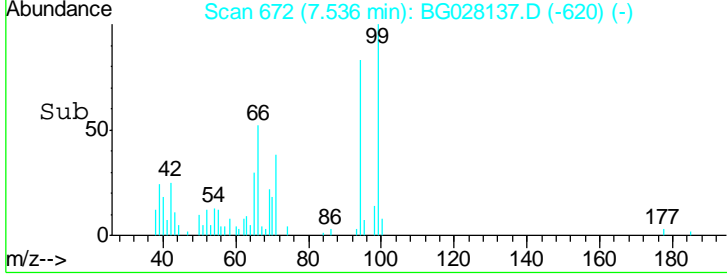
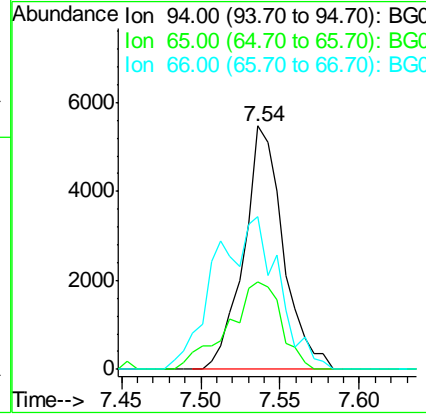
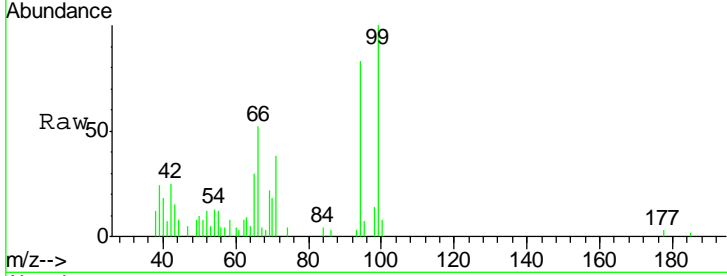




#6  
 Phenol  
 Concen: 1.987 ng/ul  
 RT: 7.54 min Scan# 672  
 Delta R.T. 0.01 min  
 Lab File: BG028137.D  
 Acq: 3 Aug 2017 12:12

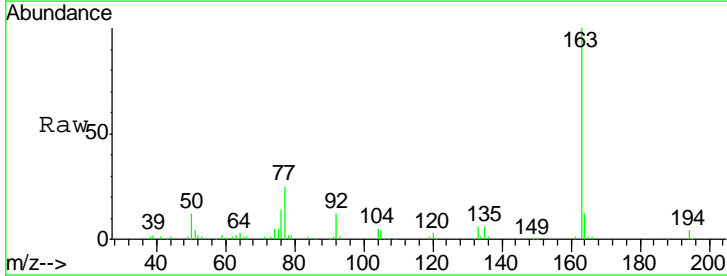
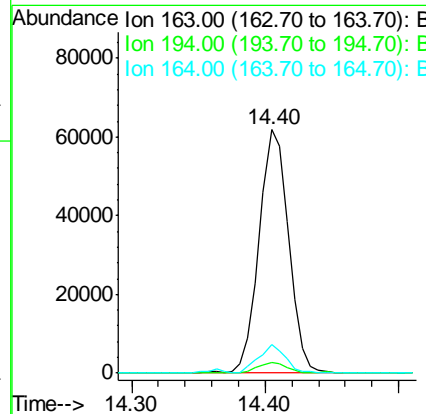
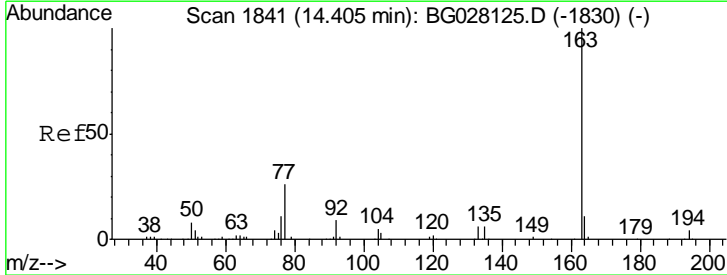
Instrument :  
 BNA\_G  
 ClientSampled :  
 C0AA5

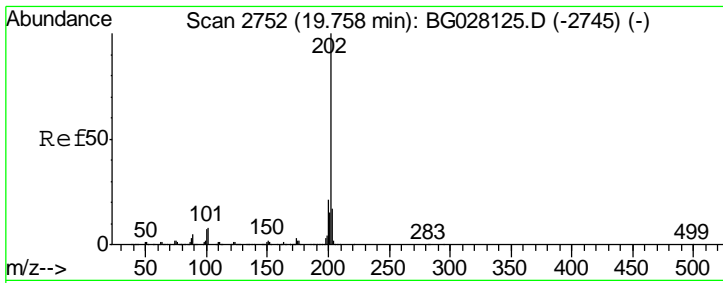
Tgt Ion	Resp	Lower	Upper
94	100		
65	36.1	26.8	40.2
66	62.5	44.4	66.6



#44  
 Dimethylphthalate  
 Concen: 7.155 ng/ul  
 RT: 14.40 min Scan# 1841  
 Delta R.T. -0.00 min  
 Lab File: BG028137.D  
 Acq: 3 Aug 2017 12:12

Tgt Ion	Resp	Lower	Upper
163	100		
194	4.4	3.4	5.0
164	11.8	9.0	13.4

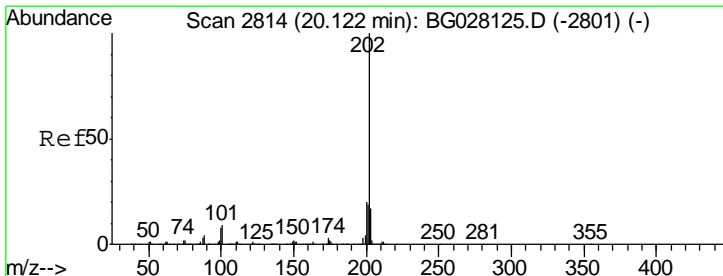
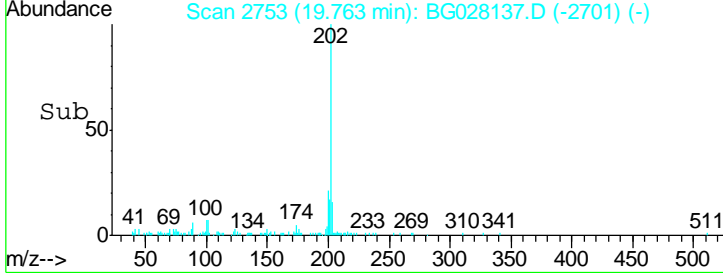
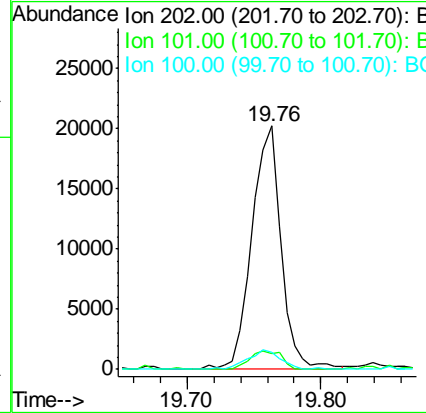
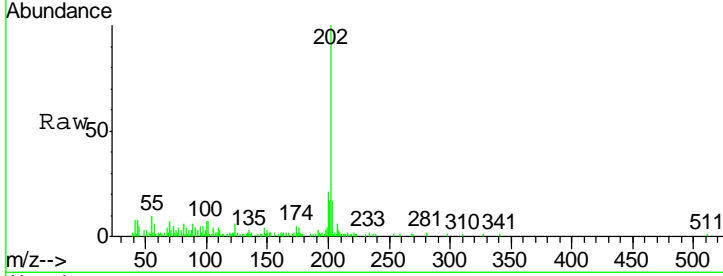




#74  
 Fluoranthene  
 Concen: 1.343 ng/ul  
 RT: 19.76 min Scan# 2753  
 Delta R.T. 0.01 min  
 Lab File: BG028137.D  
 Acq: 3 Aug 2017 12:12

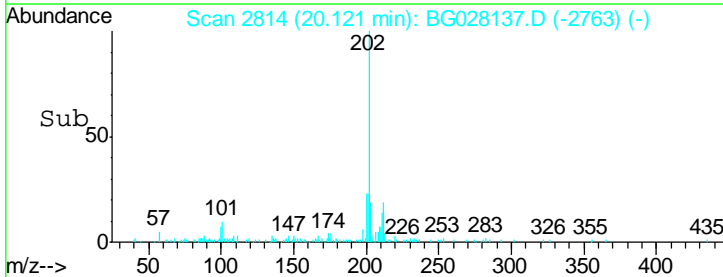
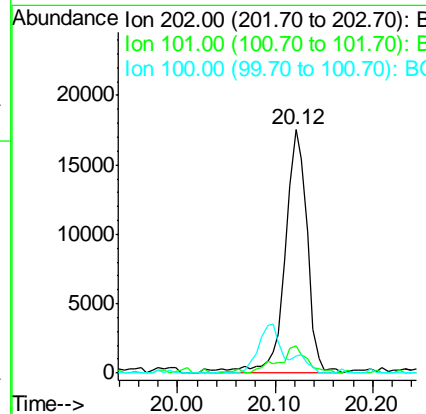
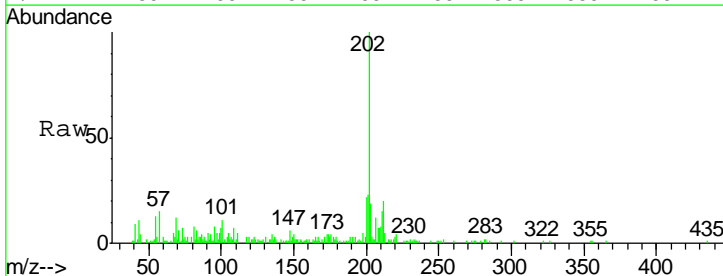
Instrument :  
 BNA\_G  
 ClientSampleId :  
 C0AA5

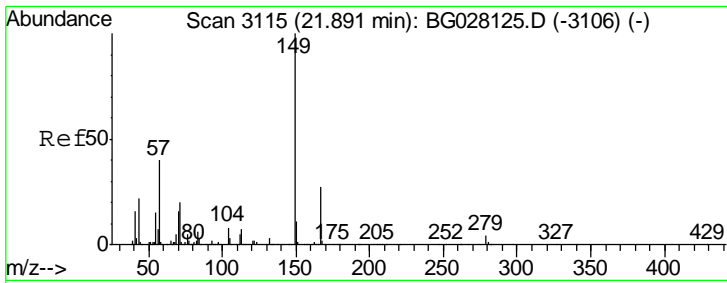
Tgt Ion	Resp	Lower	Upper
202	30419		
101	6.5	6.2	9.2
100	7.0	5.2	7.8



#77  
 Pyrene  
 Concen: 1.256 ng/ul  
 RT: 20.12 min Scan# 2814  
 Delta R.T. -0.00 min  
 Lab File: BG028137.D  
 Acq: 3 Aug 2017 12:12

Tgt Ion	Resp	Lower	Upper
202	27677		
101	11.1	6.9	10.3#
100	6.8	6.6	10.0

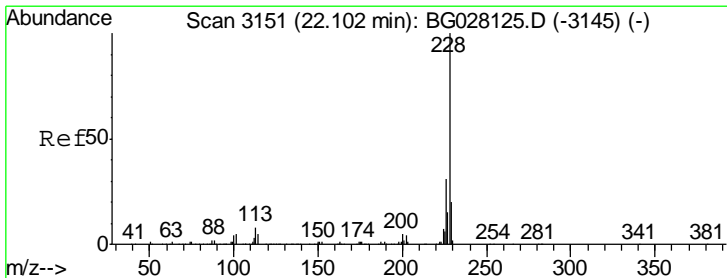
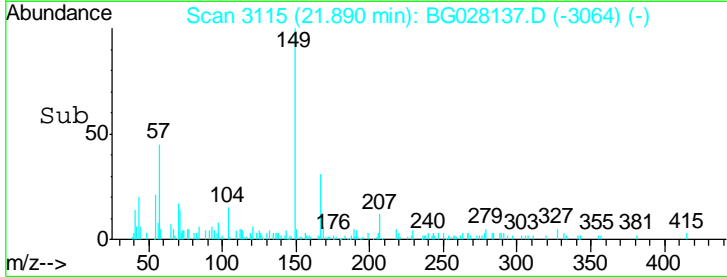
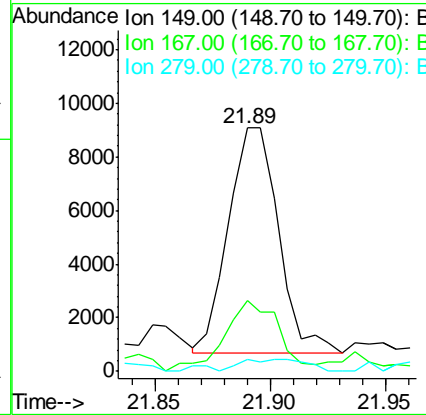
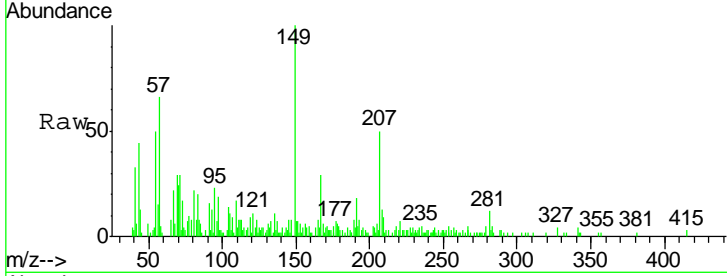




#81  
 Bis(2-ethylhexyl)phthalate  
 Concen: 1.075 ng/ul  
 RT: 21.89 min Scan# 3115  
 Delta R.T. -0.00 min  
 Lab File: BG028137.D  
 Acq: 3 Aug 2017 12:12

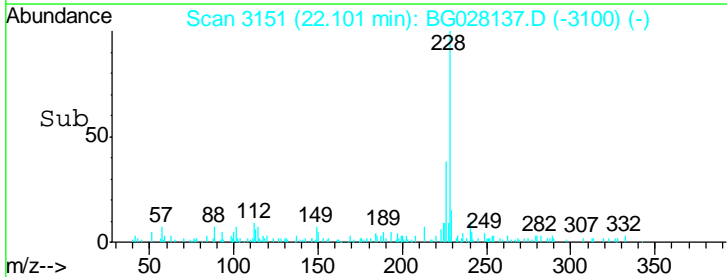
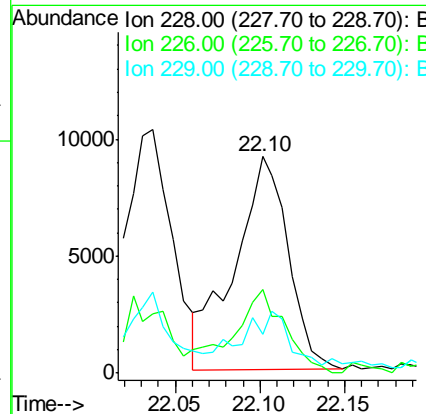
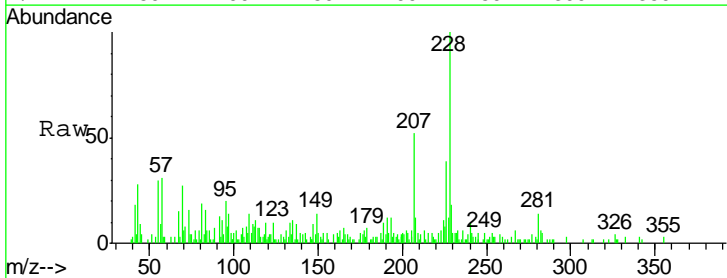
Instrument :  
 BNA\_G  
 ClientSampleId :  
 C0AA5

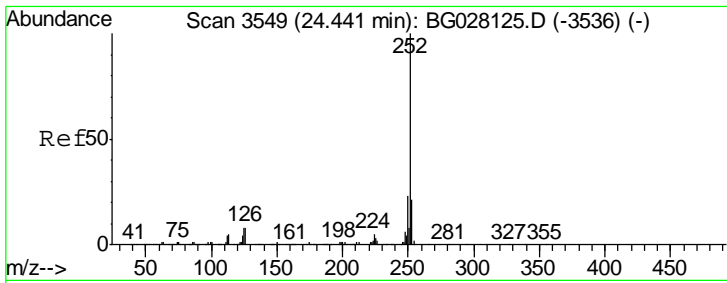
Tgt Ion	Resp	Lower	Upper
149	12623		
167	28.9	21.8	32.8
279	4.7	4.5	6.7



#82  
 Chrysene  
 Concen: 1.048 ng/ul  
 RT: 22.10 min Scan# 3151  
 Delta R.T. -0.00 min  
 Lab File: BG028137.D  
 Acq: 3 Aug 2017 12:12

Tgt Ion	Resp	Lower	Upper
228	20145		
226	38.8	24.0	36.0#
229	18.1	16.9	25.3

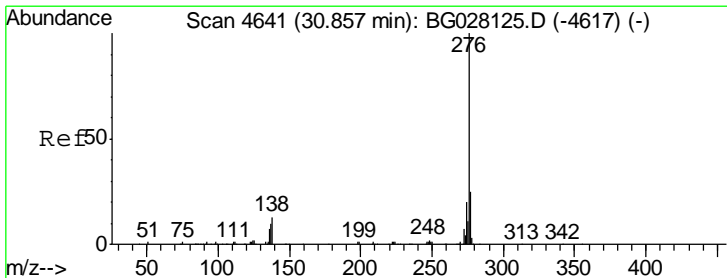
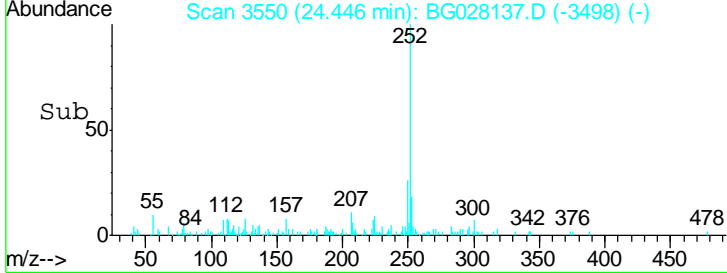
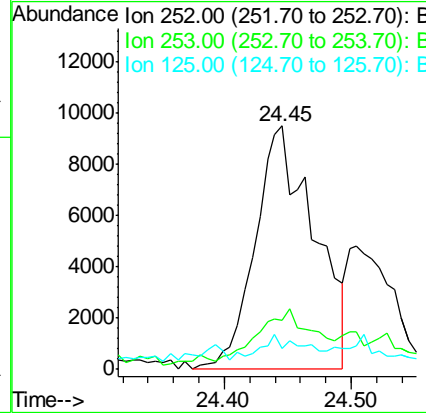
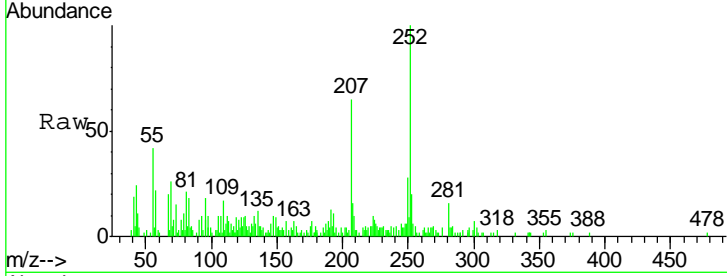




#85  
 Benzo(b)fluoranthene  
 Concen: 1.391 ng/ul  
 RT: 24.45 min Scan# 3550  
 Delta R.T. 0.01 min  
 Lab File: BG028137.D  
 Acq: 3 Aug 2017 12:12

Instrument :  
 BNA\_G  
 ClientSampled :  
 C0AA5

Tgt Ion	Resp	Lower	Upper
252	100		
253	20.1	17.7	26.5
125	8.8	4.0	6.0#



#91  
 Benzo(g,h,i)perylene  
 Concen: 1.371 ng/ul  
 RT: 30.87 min Scan# 4643  
 Delta R.T. 0.01 min  
 Lab File: BG028137.D  
 Acq: 3 Aug 2017 12:12

Tgt Ion	Resp	Lower	Upper
276	100		
138	17.6	8.6	12.8#
277	26.6	17.6	26.4#

