

Data Path : Z:\HPCHEM1\BNA_G\DATA\BG080315\
 Data File : BG018247.D
 Acq On : 3 Aug 2015 17:58
 Operator : UM/TP
 Sample : G3109-09
 Misc :
 ALS Vial : 7 Sample Multiplier: 1

Instrument :
 BNA_G
 ClientSampleId :
 C01J3

Integration Parameters: LSCINT.P

Integrator: RTE
 Smoothing : OFF
 Sampling : 1
 Start Thrs: 0.2
 Stop Thrs : 0

Filtering: 5
 Min Area: 0.1 % of largest Peak
 Max Peaks: 100
 Peak Location: TOP

If leading or trailing edge < 100 prefer < Baseline drop else tangent >
 Peak separation: 5

Method : Z:\HPCHEM1\BNA_G\METHODS\SOM02.2-EPA-BG073115.M
 Title : SVOA CALIBRATION

Signal : TIC

peak #	R.T. min	first scan	max scan	last scan	PK TY	peak height	corr. area	corr. % max.	% of total
1	2.740	5	9	10	rBV4	2841	2965	0.52%	0.042%
2	2.905	34	37	40	rVB4	3408	4501	0.79%	0.064%
3	2.940	40	43	48	rVV4	4945	6657	1.17%	0.094%
4	3.357	111	114	118	rBV3	3765	4513	0.79%	0.064%
5	3.457	127	131	136	rBV4	5781	8387	1.48%	0.119%
6	3.980	218	220	224	rVV2	1792	2930	0.52%	0.041%
7	4.033	227	229	234	rVB4	2614	4067	0.72%	0.058%
8	4.979	388	390	399	rVB3	3586	6201	1.09%	0.088%
9	6.124	581	585	587	rVB	3006	3476	0.61%	0.049%
10	6.448	638	640	644	rBV	2406	2916	0.51%	0.041%
11	6.500	644	649	654	rVV4	6098	11930	2.10%	0.169%
12	6.659	670	676	687	rVB	84538	133766	23.54%	1.892%
13	6.753	689	692	695	rBV2	2535	2791	0.49%	0.039%
14	6.800	695	700	707	rBV	59338	89698	15.79%	1.269%
15	6.994	727	733	739	rVV2	83371	126999	22.35%	1.796%
16	7.458	804	812	819	rBV	110159	167506	29.48%	2.369%
17	8.052	908	913	916	rBV	2051	3229	0.57%	0.046%
18	8.193	929	937	942	rBV	73818	122831	21.62%	1.737%
19	8.240	942	945	951	rVV4	9441	17481	3.08%	0.247%
20	8.539	992	996	999	rBV2	1730	2919	0.51%	0.041%
21	8.610	1002	1008	1014	rVV	81459	130576	22.98%	1.847%
22	9.332	1123	1131	1139	rBV	75781	124094	21.84%	1.755%
23	9.750	1199	1202	1205	rBV	2606	3096	0.54%	0.044%
24	9.879	1217	1224	1231	rBV	120161	192198	33.83%	2.719%
25	10.237	1279	1285	1294	rBV	164746	265210	46.68%	3.751%
26	10.390	1302	1311	1317	rBV2	72511	126636	22.29%	1.791%
27	10.848	1384	1389	1391	rBV2	1980	2787	0.49%	0.039%
28	10.942	1397	1405	1407	rVV	2421	3667	0.65%	0.052%
29	12.047	1590	1593	1597	rBV	2217	2943	0.52%	0.042%
30	12.176	1611	1615	1618	rBV2	2402	4039	0.71%	0.057%
31	12.476	1659	1666	1668	rBV4	4885	8131	1.43%	0.115%
32	12.576	1675	1683	1689	rBV3	3373	7807	1.37%	0.110%
33	12.623	1689	1691	1697	rVB	2990	5093	0.90%	0.072%
34	12.676	1697	1700	1705	rBV	2126	2822	0.50%	0.040%

Data Path : Z:\HPCHEM1\BNA_G\DATA\BG080315\
 Data File : BG018247.D
 Acq On : 3 Aug 2015 17:58
 Operator : UM/TP
 Sample : G3109-09
 Misc :
 ALS Vial : 7 Sample Multiplier: 1

Instrument :
 BNA_G
 ClientSampleId :
 C01J3

Integration Parameters: LSCINT.P

Integrator: RTE
 Smoothing : OFF
 Sampling : 1
 Start Thrs: 0.2
 Stop Thrs : 0

Filtering: 5
 Min Area: 0.1 % of largest Peak
 Max Peaks: 100
 Peak Location: TOP

If leading or trailing edge < 100 prefer < Baseline drop else tangent >
 Peak separation: 5

Method : Z:\HPCHEM1\BNA_G\METHODS\SOM02.2-EPA-BG073115.M
 Title : SVOA CALIBRATION

35	12.728	1705	1709	1713	rBV2	9589	12759	2.25%	0.180%
36	12.775	1713	1717	1722	rBV3	4334	6887	1.21%	0.097%
37	13.075	1764	1768	1774	rVB3	10438	14228	2.50%	0.201%
38	13.551	1843	1849	1853	rVV	236104	312030	54.92%	4.414%
39	13.598	1853	1857	1862	rVB	69189	90308	15.90%	1.277%
40	13.768	1884	1886	1889	rBV2	3518	4311	0.76%	0.061%
41	13.821	1889	1895	1901	rVB	210214	308966	54.38%	4.370%
42	13.974	1913	1921	1922	rBV	2039	3638	0.64%	0.051%
43	14.015	1925	1928	1930	rVB	2824	2864	0.50%	0.041%
44	14.062	1930	1936	1939	rBV3	6192	11030	1.94%	0.156%
45	14.139	1943	1949	1955	rVV2	260662	398658	70.17%	5.639%
46	14.197	1955	1959	1968	rVV4	3933	9128	1.61%	0.129%
47	14.256	1968	1969	1974	rVV4	2321	3311	0.58%	0.047%
48	14.385	1986	1991	1999	rBV	78127	120284	21.17%	1.701%
49	14.456	2002	2003	2007	rVV2	2788	3135	0.55%	0.044%
50	14.515	2010	2013	2015	rBV2	6241	7780	1.37%	0.110%
51	14.544	2015	2018	2021	rVV3	6117	9361	1.65%	0.132%
52	14.573	2021	2023	2028	rVB4	6610	9154	1.61%	0.129%
53	14.767	2052	2056	2059	rVB2	2860	4614	0.81%	0.065%
54	14.867	2069	2073	2079	rVV2	16721	24969	4.39%	0.353%
55	14.949	2084	2087	2090	rBV4	2984	3648	0.64%	0.052%
56	15.008	2095	2097	2100	rBV3	4971	5532	0.97%	0.078%
57	15.084	2105	2110	2113	rBV5	7614	13400	2.36%	0.190%
58	15.137	2113	2119	2125	rVB	284528	401503	70.67%	5.679%
59	15.278	2137	2143	2151	rBV2	59435	96331	16.96%	1.363%
60	15.478	2175	2177	2183	rBV4	5730	9256	1.63%	0.131%
61	15.625	2199	2202	2205	rBV2	3050	3348	0.59%	0.047%
62	15.707	2214	2216	2218	rBV3	4285	4280	0.75%	0.061%
63	15.795	2227	2231	2235	rBV3	9069	11460	2.02%	0.162%
64	15.878	2241	2245	2250	rBV5	11419	17018	3.00%	0.241%
65	16.013	2262	2268	2273	rBV4	16949	28161	4.96%	0.398%
66	16.107	2279	2284	2288	rBV6	2408	4979	0.88%	0.070%
67	16.318	2316	2320	2326	rBV4	21889	33463	5.89%	0.473%
68	16.442	2337	2341	2343	rBV3	11060	13952	2.46%	0.197%
69	16.500	2349	2351	2354	rVB4	3628	3488	0.61%	0.049%
70	16.577	2362	2364	2366	rVV3	3936	3753	0.66%	0.053%
71	16.630	2371	2373	2374	rBV2	3463	2863	0.50%	0.040%

Data Path : Z:\HPCHEM1\BNA_G\DATA\BG080315\
 Data File : BG018247.D
 Acq On : 3 Aug 2015 17:58
 Operator : UM/TP
 Sample : G3109-09
 Misc :
 ALS Vial : 7 Sample Multiplier: 1

Instrument :
 BNA_G
 ClientSampleId :
 C01J3

Integration Parameters: LSCINT.P

Integrator: RTE
 Smoothing : OFF
 Sampling : 1
 Start Thrs: 0.2
 Stop Thrs : 0

Filtering: 5
 Min Area: 0.1 % of largest Peak
 Max Peaks: 100
 Peak Location: TOP

If leading or trailing edge < 100 prefer < Baseline drop else tangent >
 Peak separation: 5

Method : Z:\HPCHEM1\BNA_G\METHODS\SOM02.2-EPA-BG073115.M
 Title : SVOA CALIBRATION

72	16.647	2374	2376	2378	rVV3	3352	3839	0.68%	0.054%
73	16.665	2378	2379	2385	rVV5	8164	9824	1.73%	0.139%
74	16.718	2385	2388	2390	rVB4	3078	3551	0.63%	0.050%
75	16.812	2401	2404	2408	rBV5	3293	4930	0.87%	0.070%
76	16.894	2410	2418	2422	rBV2	391231	534314	94.04%	7.558%
77	16.929	2422	2424	2429	rVB	24918	32048	5.64%	0.453%
78	16.994	2429	2435	2442	rBV	307946	453178	79.76%	6.410%
79	17.053	2442	2445	2446	rBV3	5086	5243	0.92%	0.074%
80	17.270	2478	2482	2485	rBV6	4872	8304	1.46%	0.117%
81	17.305	2485	2488	2492	rVV5	7388	10941	1.93%	0.155%
82	17.352	2494	2496	2502	rVB6	3428	5004	0.88%	0.071%
83	17.452	2511	2513	2515	rVB2	4270	4043	0.71%	0.057%
84	17.811	2570	2574	2583	rBV3	116161	160026	28.17%	2.264%
85	17.963	2596	2600	2603	rBV5	6738	11156	1.96%	0.158%
86	18.099	2622	2623	2625	rVV2	4242	2950	0.52%	0.042%
87	18.263	2649	2651	2652	rBV2	3337	3170	0.56%	0.045%
88	18.275	2652	2653	2654	rBV	7145	3768	0.66%	0.053%
89	18.357	2665	2667	2669	rVV2	4515	3663	0.64%	0.052%
90	18.528	2693	2696	2698	rBV4	7825	9037	1.59%	0.128%
91	18.563	2698	2702	2708	rVV	43538	55645	9.79%	0.787%
92	18.627	2710	2713	2715	rBV4	6442	8103	1.43%	0.115%
93	18.868	2752	2754	2759	rVB5	12930	10887	1.92%	0.154%
94	18.962	2766	2770	2777	rBV	51737	77034	13.56%	1.090%
95	19.021	2778	2780	2787	rVB7	13791	22057	3.88%	0.312%
96	19.303	2822	2828	2837	rVB2	379827	554053	97.52%	7.837%
97	20.249	2984	2989	2993	rBV	88147	110714	19.49%	1.566%
98	21.101	3129	3134	3138	rBV	454012	568152	100.00%	8.036%
99	23.128	3475	3479	3485	rVB	203468	325810	57.35%	4.608%
100	23.269	3497	3503	3509	rVB2	243871	449650	79.14%	6.360%

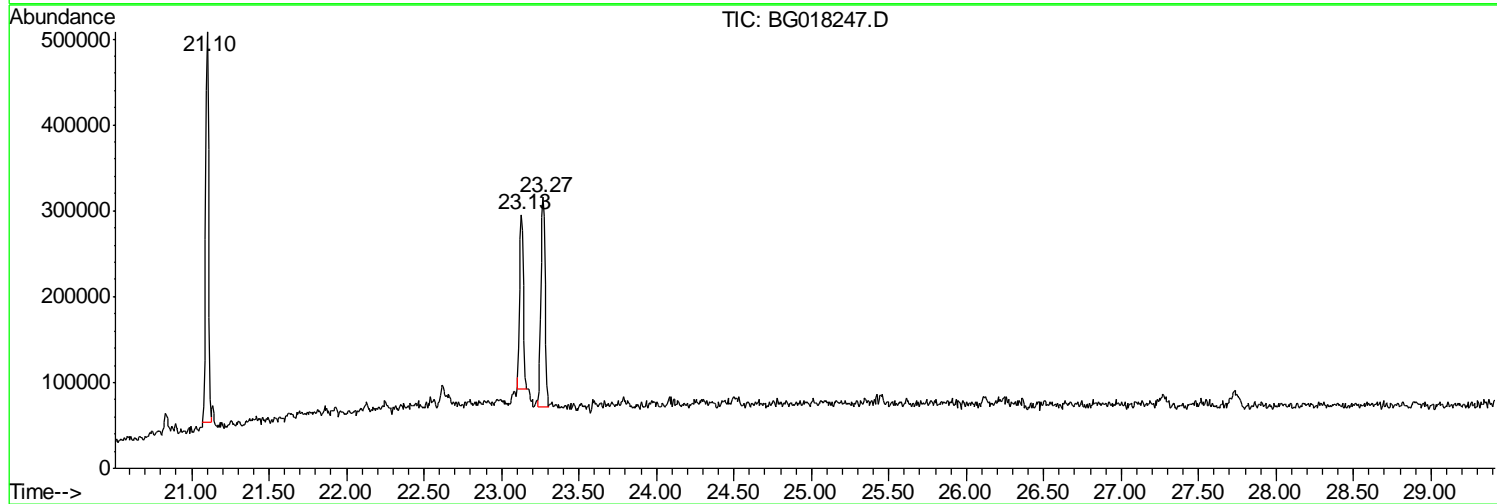
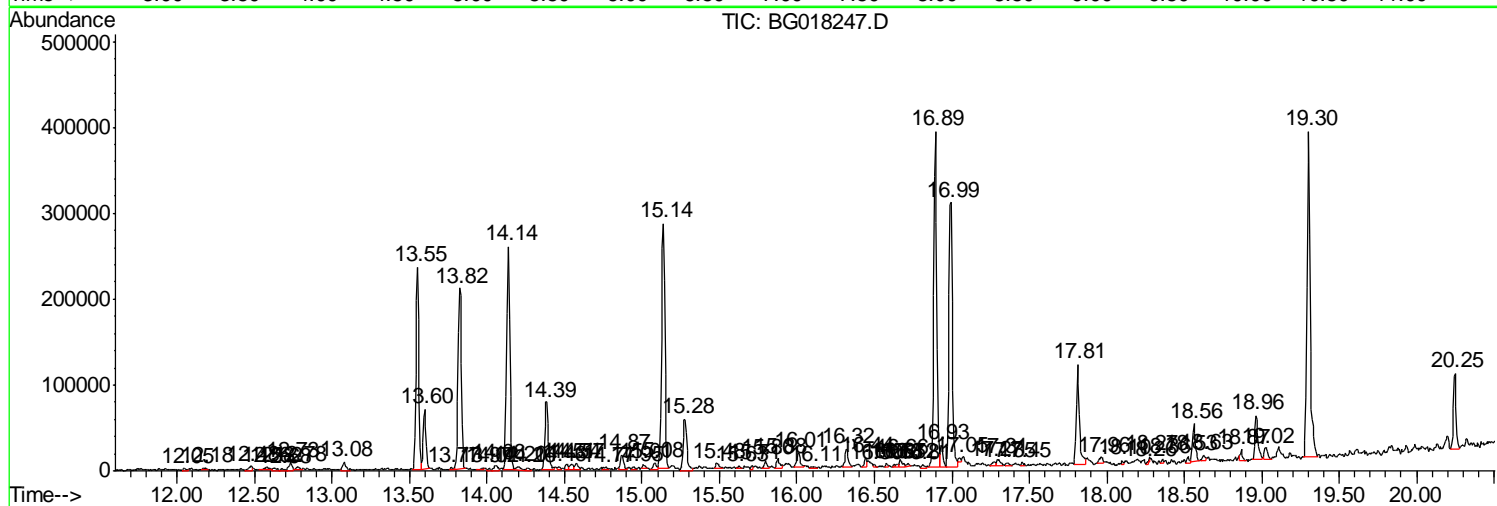
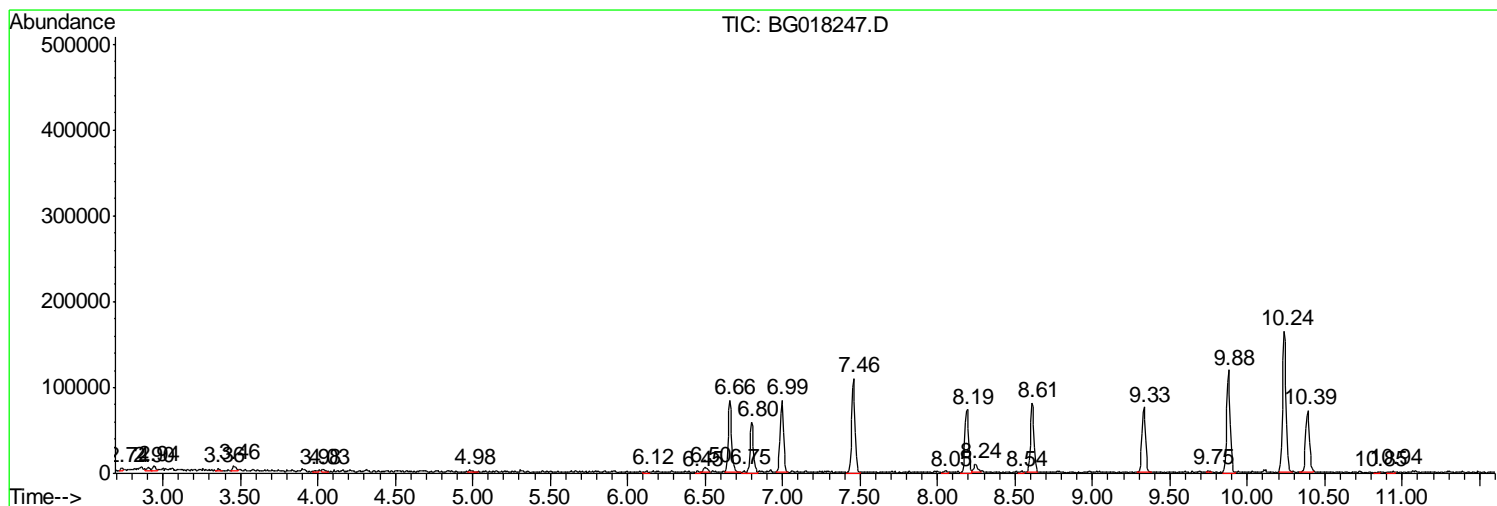
Sum of corrected areas: 7069806

Data Path : Z:\HPCHEM1\BNA_G\DATA\BG080315\
 Data File : BG018247.D
 Acq On : 3 Aug 2015 17:58
 Operator : UM/TP
 Sample : G3109-09
 Misc :
 ALS Vial : 7 Sample Multiplier: 1

Instrument :
 BNA_G
 ClientSampleId :
 C01J3

Quant Method : Z:\HPCHEM1\BNA_G\METHODS\SOM02.2-EPA-BG073115.M
 Quant Title : SVOA CALIBRATION

TIC Library : C:\DATABASE\NIST02.L
 TIC Integration Parameters: LSCINT.P



Data Path : Z:\HPCHEM1\BNA_G\DATA\BG080315\
 Data File : BG018247.D
 Acq On : 3 Aug 2015 17:58
 Operator : UM/TP
 Sample : G3109-09
 Misc :
 ALS Vial : 7 Sample Multiplier: 1

Instrument :
 BNA_G
 ClientSampled :
 C01J3

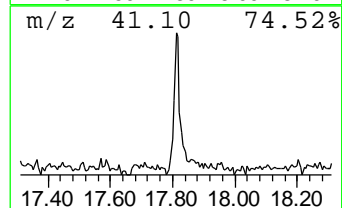
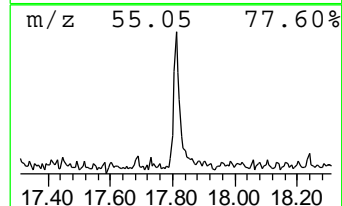
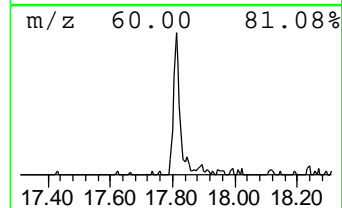
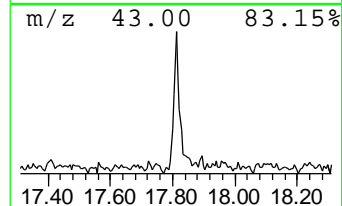
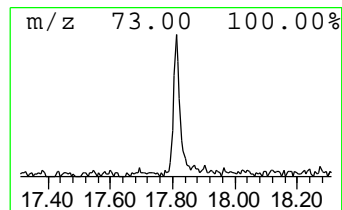
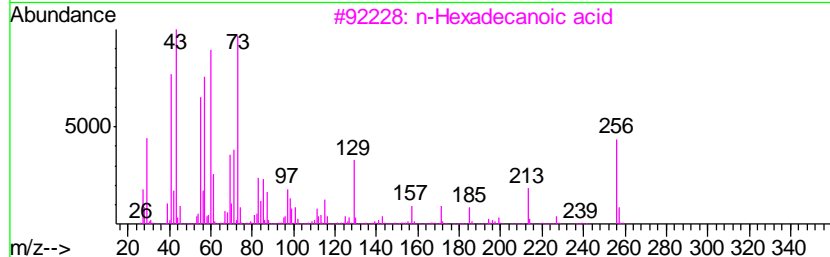
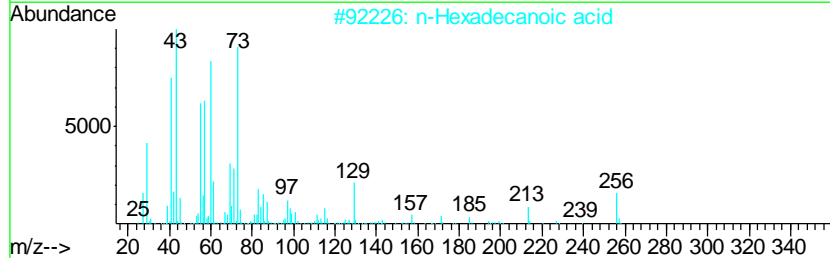
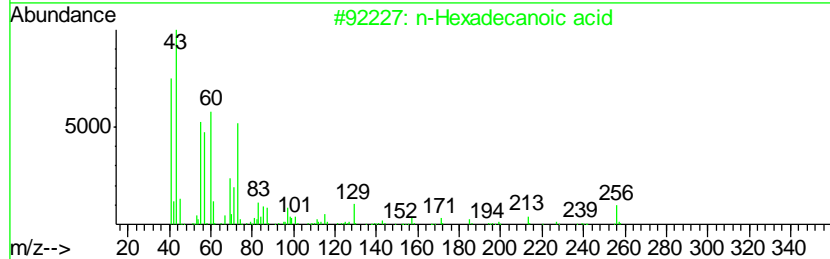
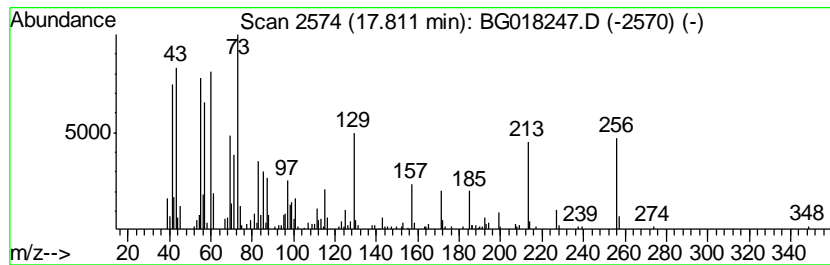
Quant Method : Z:\HPCHEM1\BNA_G\METHODS\SOM02.2-EPA-BG073115.M
 Quant Title : SVOA CALIBRATION

TIC Library : C:\DATABASE\NIST02.L
 TIC Integration Parameters: LSCINT.P

 Peak Number 1 n-Hexadecanoic acid Concentration Rank 1

R.T.	EstConc	Area	Relative to ISTD	R.T.
17.81	5.99 ng/ul	160026	Phenanthrene-d10	16.89

Hit#	of	Tentative ID	MW	MolForm	CAS#	Qual
1	5	n-Hexadecanoic acid	256	C16H32O2	000057-10-3	96
2		n-Hexadecanoic acid	256	C16H32O2	000057-10-3	92
3		n-Hexadecanoic acid	256	C16H32O2	000057-10-3	87
4		Tetradecanoic acid	228	C14H28O2	000544-63-8	60
5		Tetradecanoic acid	228	C14H28O2	000544-63-8	60



Data Path : Z:\HPCHEM1\BNA_G\DATA\BG080315\
 Data File : BG018247.D
 Acq On : 3 Aug 2015 17:58
 Operator : UM/TP
 Sample : G3109-09
 Misc :
 ALS Vial : 7 Sample Multiplier: 1

Instrument :
 BNA_G
 ClientSampleID :
 C01J3

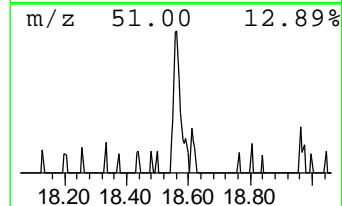
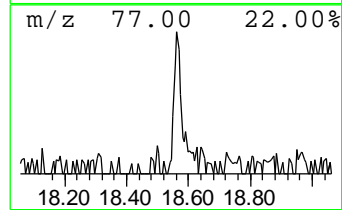
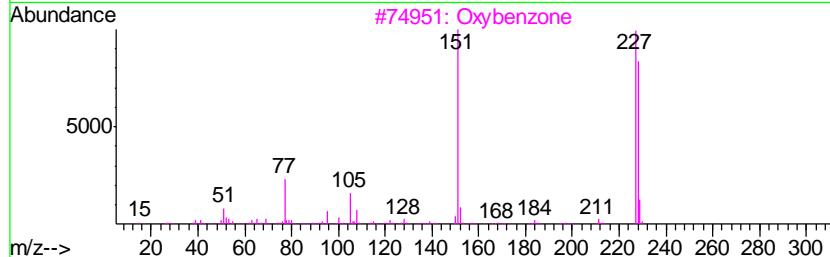
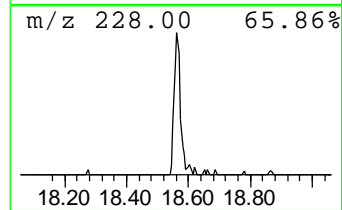
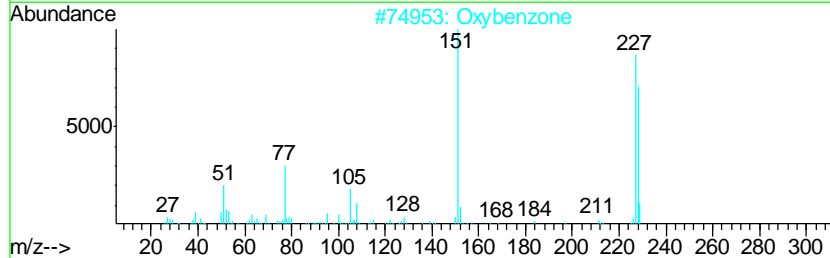
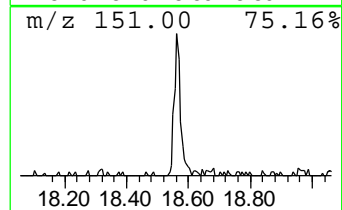
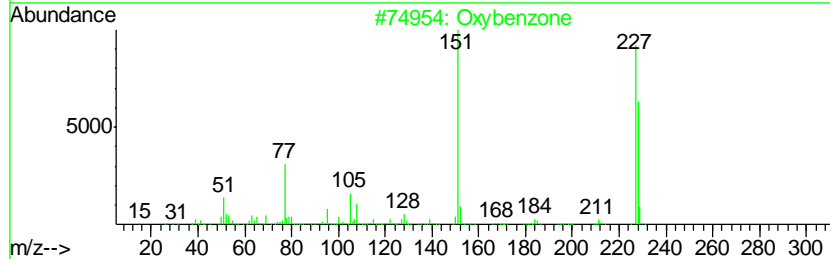
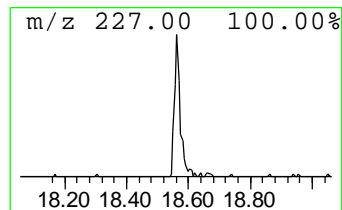
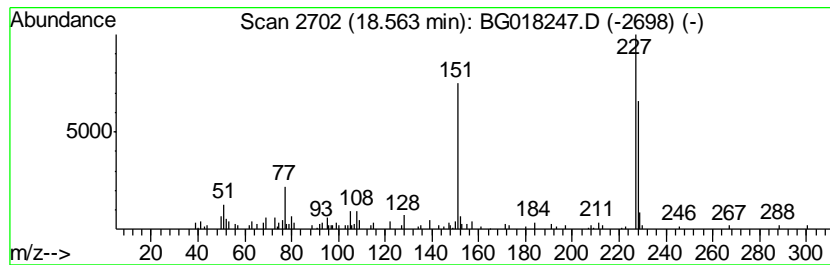
Quant Method : Z:\HPCHEM1\BNA_G\METHODS\SOM02.2-EPA-BG073115.M
 Quant Title : SVOA CALIBRATION

TIC Library : C:\DATABASE\NIST02.L
 TIC Integration Parameters: LSCINT.P

 Peak Number 2 Oxybenzone Concentration Rank 2

R.T.	EstConc	Area	Relative to ISTD	R.T.
18.56	2.08 ng/ul	55645	Phenanthrene-d10	16.89

Hit#	of	Tentative ID	MW	MolForm	CAS#	Qual
1	5	Oxybenzone	228	C14H12O3	000131-57-7	94
2		Oxybenzone	228	C14H12O3	000131-57-7	68
3		Oxybenzone	228	C14H12O3	000131-57-7	64
4		2-Amino-3-cyano-4-ethyl-5-phenyl...	228	C13H12N2S	1000251-78-4	38
5		4-[(3-Methoxy-phenylimino)-methy...	227	C14H13NO2	1000294-23-9	32



Data Path : Z:\HPCHEM1\BNA_G\DATA\BG080315\
Data File : BG018247.D
Acq On : 3 Aug 2015 17:58
Operator : UM/TP
Sample : G3109-09
Misc :
ALS Vial : 7 Sample Multiplier: 1

Instrument :
BNA_G
ClientSampleId :
C01J3

Quant Method : Z:\HPCHEM1\BNA_G\METHODS\SOM02.2-EPA-BG073115.M
Quant Title : SVOA CALIBRATION

TIC Library : C:\DATABASE\NIST02.L
TIC Integration Parameters: LSCINT.P

TIC Top Hit name	RT	EstConc	Units	Response	--Internal Standard--			
					#	RT	Resp	Conc
n-Hexadecanoic acid	17.81	6.0	ng/ul	160026	4	16.89	534314	20.0
Oxybenzone	18.56	2.1	ng/ul	55645	4	16.89	534314	20.0