

Data Path : Z:\SVOASRV\HPCHEM1\BNA G\DATA\BG080319\
 Data File : BG041941.D
 Acq On : 4 Aug 2019 13:46
 Operator : HP/JU
 Sample : K3850-09
 Misc :
 ALS Vial : 42 Sample Multiplier: 1

Instrument :
 BNA_G
 ClientSampled :
 BENQ3

Integration Parameters: LSCINT.P

Integrator: RTE
 Smoothing : OFF
 Sampling : 1
 Start Thrs: 0.2
 Stop Thrs : 0

Filtering: 5
 Min Area: 0.1 % of largest Peak
 Max Peaks: 100
 Peak Location: TOP

If leading or trailing edge < 100 prefer < Baseline drop else tangent >
 Peak separation: 5

Method : Z:\SVOASRV\HPCHEM1\BNA_G\METHODS\SOM-EPA-BG080319MA.M
 Title : SVOA CALIBRATION

Signal : TIC

peak #	R.T. min	first scan	max scan	last scan	PK TY	peak height	corr. area	corr. % max.	% of total
1	3.156	7	11	28	rVB	285111	529525	3.74%	0.331%
2	7.186	689	697	707	rBV	249942	446868	3.16%	0.280%
3	7.357	718	726	742	rBV	189047	340102	2.40%	0.213%
4	7.562	754	761	772	rBV	267713	467194	3.30%	0.292%
5	8.038	833	842	849	rBV	314111	537704	3.80%	0.337%
6	8.743	955	962	973	rVV	316758	573706	4.05%	0.359%
7	9.202	1034	1040	1053	rVB	269953	497343	3.51%	0.311%
8	9.930	1155	1164	1172	rBV	231171	426035	3.01%	0.267%
9	10.477	1248	1257	1270	rBV	375774	689321	4.87%	0.431%
10	10.859	1311	1322	1327	rBV	414874	796427	5.63%	0.499%
11	10.911	1327	1331	1338	rVV	283712	507219	3.58%	0.317%
12	10.988	1338	1344	1357	rVV	309388	594109	4.20%	0.372%
13	12.521	1596	1605	1614	rVV	528512	861022	6.08%	0.539%
14	12.739	1632	1642	1653	rVV	395879	703893	4.97%	0.441%
15	13.726	1804	1810	1820	rVB	288143	552039	3.90%	0.346%
16	13.861	1825	1833	1834	rBV	253482	375435	2.65%	0.235%
17	14.020	1853	1860	1865	rVV	443059	822539	5.81%	0.515%
18	14.096	1865	1873	1878	rVV2	693925	1385361	9.79%	0.867%
19	14.255	1892	1900	1904	rBV	249187	427765	3.02%	0.268%
20	14.390	1916	1923	1937	rBV	865681	1613854	11.40%	1.010%
21	14.695	1965	1975	1981	rVV3	693314	1336375	9.44%	0.837%
22	14.760	1981	1986	1994	rVV	900118	1557182	11.00%	0.975%
23	14.901	2001	2010	2020	rVV2	284346	945470	6.68%	0.592%
24	15.007	2020	2028	2033	rVV2	240555	521889	3.69%	0.327%
25	15.095	2036	2043	2050	rVB2	299961	576117	4.07%	0.361%
26	15.171	2050	2056	2063	rBV	199146	333797	2.36%	0.209%
27	15.318	2072	2081	2085	rBV	168889	305909	2.16%	0.191%
28	15.488	2102	2110	2113	rBV2	175379	374983	2.65%	0.235%
29	15.694	2135	2145	2150	rVV	1001324	1601874	11.32%	1.003%
30	15.747	2150	2154	2163	rVB	703580	1013474	7.16%	0.634%
31	15.841	2163	2170	2173	rBV4	220948	481147	3.40%	0.301%
32	15.876	2173	2176	2179	rVV	268926	339620	2.40%	0.213%
33	15.912	2179	2182	2187	rVB2	336214	464518	3.28%	0.291%
34	16.423	2260	2269	2275	rVB7	198973	460315	3.25%	0.288%

Data Path : Z:\SVOASRV\HPCHEM1\BNA G\DATA\BG080319\
 Data File : BG041941.D
 Acq On : 4 Aug 2019 13:46
 Operator : HP/JU
 Sample : K3850-09
 Misc :
 ALS Vial : 42 Sample Multiplier: 1

Instrument :
 BNA_G
 ClientSampleId :
 BENQ3

Integration Parameters: LSCINT.P

Integrator: RTE
 Smoothing : OFF
 Sampling : 1
 Start Thrs: 0.2
 Stop Thrs : 0

Filtering: 5
 Min Area: 0.1 % of largest Peak
 Max Peaks: 100
 Peak Location: TOP

If leading or trailing edge < 100 prefer < Baseline drop else tangent >
 Peak separation: 5

Method : Z:\SVOASRV\HPCHEM1\BNA_G\METHODS\SOM-EPA-BG080319MA.M
 Title : SVOA CALIBRATION

35	16.734	2315	2322	2323	rBV3	256477	396078	2.80%	0.248%
36	16.758	2323	2326	2330	rVV2	322889	485813	3.43%	0.304%
37	16.805	2330	2334	2340	rVV2	335278	548279	3.87%	0.343%
38	16.904	2348	2351	2356	rVB	247899	372123	2.63%	0.233%
39	16.957	2356	2360	2367	rBV2	179001	430199	3.04%	0.269%
40	17.104	2379	2385	2392	rVB2	337797	565979	4.00%	0.354%
41	17.269	2408	2413	2424	rVB	652122	1066811	7.54%	0.668%
42	17.457	2439	2445	2447	rBV2	713639	1107489	7.82%	0.693%
43	17.504	2447	2453	2458	rVV	5376410	9434022	66.64%	5.905%
44	17.557	2458	2462	2464	rVV	1181018	1694020	11.97%	1.060%
45	17.592	2464	2468	2473	rVV	1533816	2275406	16.07%	1.424%
46	17.645	2473	2477	2482	rVV3	184631	391128	2.76%	0.245%
47	18.038	2538	2544	2553	rVB	818477	1258258	8.89%	0.788%
48	18.179	2563	2568	2575	rVB	426963	817266	5.77%	0.512%
49	18.338	2589	2595	2599	rVV	2322553	3815512	26.95%	2.388%
50	18.385	2599	2603	2610	rVB	2849258	4081440	28.83%	2.555%
51	18.467	2611	2617	2621	rBV	853149	1388815	9.81%	0.869%
52	18.526	2621	2627	2631	rVV2	2582607	5003875	35.35%	3.132%
53	18.567	2631	2634	2640	rVB	1873479	2528998	17.87%	1.583%
54	18.726	2657	2661	2665	rBV2	340650	491019	3.47%	0.307%
55	18.826	2673	2678	2682	rBV	1125080	1670118	11.80%	1.045%
56	18.873	2682	2686	2695	rVB2	987535	1839049	12.99%	1.151%
57	18.955	2696	2700	2704	rBV	474924	680253	4.81%	0.426%
58	19.073	2712	2720	2725	rBV2	917917	1738512	12.28%	1.088%
59	19.125	2725	2729	2732	rVV	574071	641868	4.53%	0.402%
60	19.161	2732	2735	2740	rVB2	545675	743059	5.25%	0.465%
61	19.249	2744	2750	2755	rBV	1624593	2951149	20.85%	1.847%
62	19.313	2755	2761	2764	rVV4	546725	982083	6.94%	0.615%
63	19.390	2769	2774	2781	rBV3	872997	1951450	13.79%	1.222%
64	19.513	2789	2795	2801	rVB	4520422	7152494	50.53%	4.477%
65	19.572	2801	2805	2808	rVV2	373394	534129	3.77%	0.334%
66	19.607	2808	2811	2816	rVB2	473800	659854	4.66%	0.413%
67	19.707	2824	2828	2832	rVB3	368254	522936	3.69%	0.327%
68	19.754	2832	2836	2839	rBV2	531495	711806	5.03%	0.446%
69	19.789	2839	2842	2846	rVB	330978	421793	2.98%	0.264%
70	19.883	2847	2858	2864	rBV3	6211222	14155799	100.00%	8.861%
71	19.942	2864	2868	2874	rVB3	701753	1224881	8.65%	0.767%

Data Path : Z:\SVOASRV\HPCHEM1\BNA G\DATA\BG080319\
 Data File : BG041941.D
 Acq On : 4 Aug 2019 13:46
 Operator : HP/JU
 Sample : K3850-09
 Misc :
 ALS Vial : 42 Sample Multiplier: 1

Instrument :
 BNA_G
 ClientSampleId :
 BENQ3

Integration Parameters: LSCINT.P

Integrator: RTE
 Smoothing : OFF
 Sampling : 1
 Start Thrs: 0.2
 Stop Thrs : 0

Filtering: 5
 Min Area: 0.1 % of largest Peak
 Max Peaks: 100
 Peak Location: TOP

If leading or trailing edge < 100 prefer < Baseline drop else tangent >
 Peak separation: 5

Method : Z:\SVOASRV\HPCHEM1\BNA_G\METHODS\SOM-EPA-BG080319MA.M
 Title : SVOA CALIBRATION

72	20.101	2892	2895	2901	rVB2	383121	610302	4.31%	0.382%
73	20.195	2905	2911	2921	rBV3	1097871	2842377	20.08%	1.779%
74	20.283	2922	2926	2929	rVV3	303396	450003	3.18%	0.282%
75	20.330	2930	2934	2936	rVV4	826498	1357096	9.59%	0.849%
76	20.365	2936	2940	2945	rVB	1717143	2551903	18.03%	1.597%
77	20.465	2953	2957	2961	rVB	1135581	1519065	10.73%	0.951%
78	20.524	2962	2967	2971	rVV	1777232	2721962	19.23%	1.704%
79	20.559	2971	2973	2977	rVV2	586875	718513	5.08%	0.450%
80	20.600	2978	2980	2986	rVB2	347812	454448	3.21%	0.284%
81	20.665	2986	2991	2994	rBV	1415471	1926680	13.61%	1.206%
82	20.706	2994	2998	3002	rVB	1231392	1657211	11.71%	1.037%
83	20.823	3015	3018	3023	rVB2	347722	512966	3.62%	0.321%
84	21.035	3052	3054	3058	rVB2	337358	369740	2.61%	0.231%
85	21.135	3067	3071	3077	rVB	922730	1544244	10.91%	0.967%
86	21.317	3095	3102	3106	rBV3	1117875	2420238	17.10%	1.515%
87	21.358	3106	3109	3114	rVB	849636	1157608	8.18%	0.725%
88	21.411	3114	3118	3122	rBV2	457113	718301	5.07%	0.450%
89	21.734	3166	3173	3179	rBV2	3826757	8682687	61.34%	5.435%
90	21.799	3179	3184	3196	rVB	3778799	7473319	52.79%	4.678%
91	21.899	3198	3201	3205	rVB2	362596	504413	3.56%	0.316%
92	21.951	3206	3210	3215	rBV	604876	933257	6.59%	0.584%
93	22.222	3253	3256	3262	rVB3	314864	539446	3.81%	0.338%
94	22.416	3285	3289	3293	rBV	327296	540542	3.82%	0.338%
95	22.492	3294	3302	3309	rVV	1359716	3274912	23.13%	2.050%
96	22.563	3310	3314	3320	rVB	873510	1556027	10.99%	0.974%
97	22.774	3345	3350	3353	rBV	493392	882067	6.23%	0.552%
98	24.002	3551	3559	3566	rBV2	1365664	4653536	32.87%	2.913%
99	24.736	3677	3684	3691	rBV	920448	2467102	17.43%	1.544%
100	24.895	3703	3711	3722	rVB	1519201	4523220	31.95%	2.831%

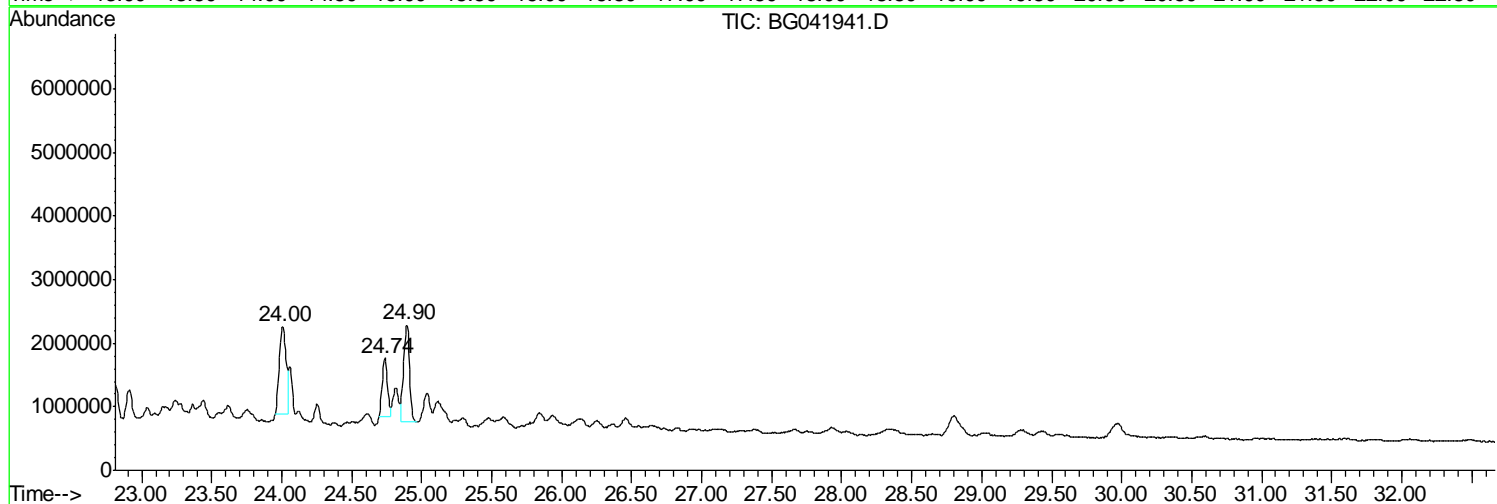
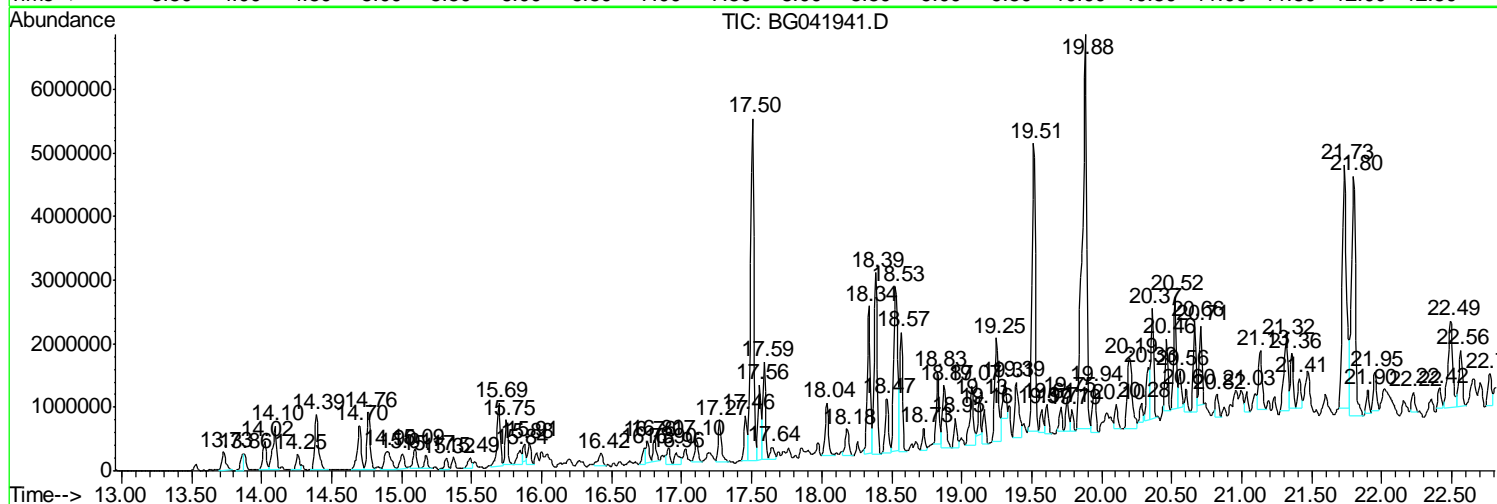
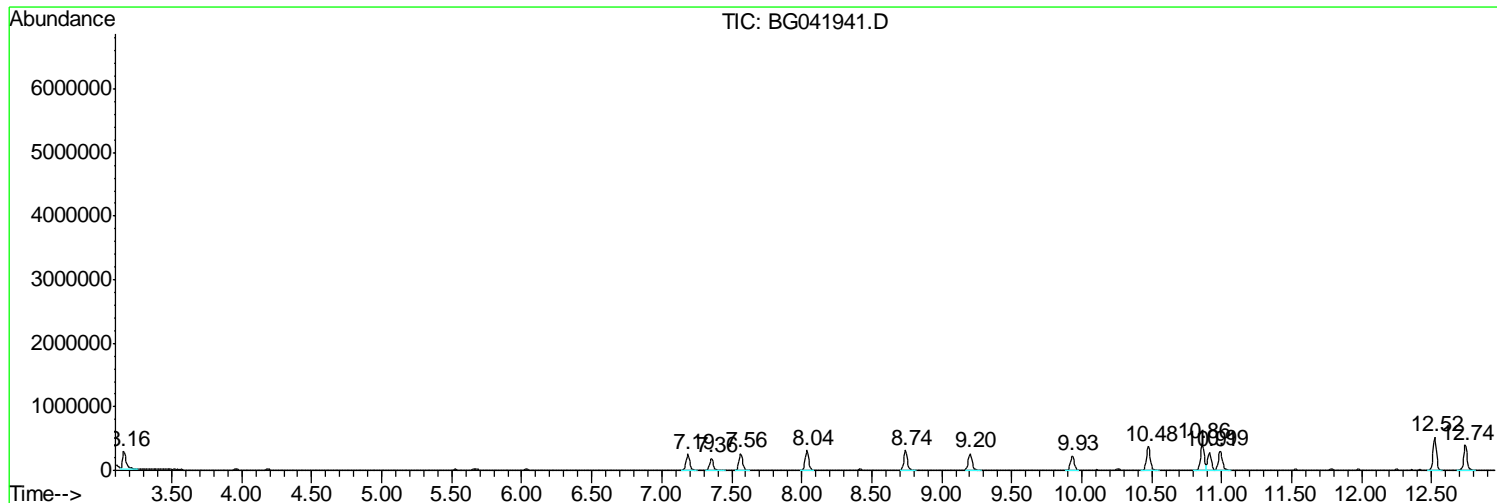
Sum of corrected areas: 159757079

Data Path : Z:\SVOASRV\HPCHEM1\BNA G\DATA\BG080319\
 Data File : BG041941.D
 Acq On : 4 Aug 2019 13:46
 Operator : HP/JU
 Sample : K3850-09
 Misc :
 ALS Vial : 42 Sample Multiplier: 1

Instrument :
 BNA_G
 ClientSampleId :
 BENQ3

Quant Method : Z:\SVOASRV\HPCHEM1\BNA_G\METHODS\SOM-EPA-BG080319MA.M
 Quant Title : SVOA CALIBRATION

TIC Library : C:\DATABASE\NIST11.L
 TIC Integration Parameters: LSCINT.P



Data Path : Z:\SVOASRV\HPCHEM1\BNA G\DATA\BG080319\
 Data File : BG041941.D
 Acq On : 4 Aug 2019 13:46
 Operator : HP/JU
 Sample : K3850-09
 Misc :
 ALS Vial : 42 Sample Multiplier: 1

Instrument :
 BNA_G
 ClientSampled :
 BENQ3

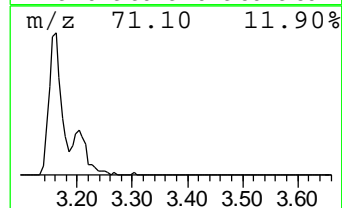
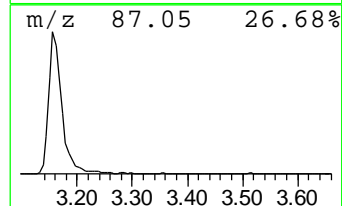
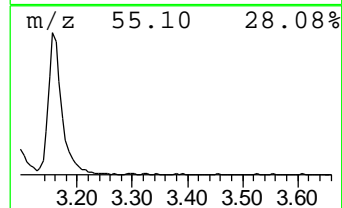
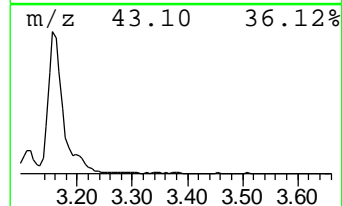
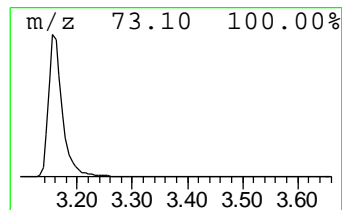
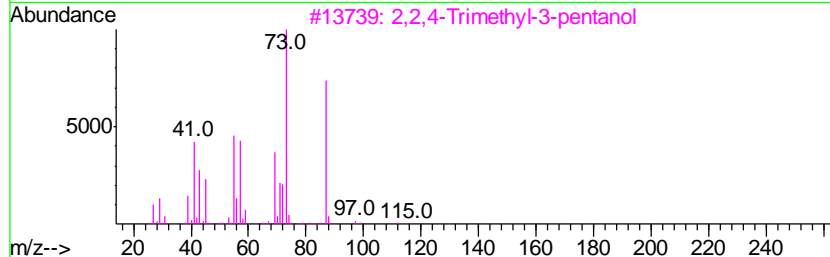
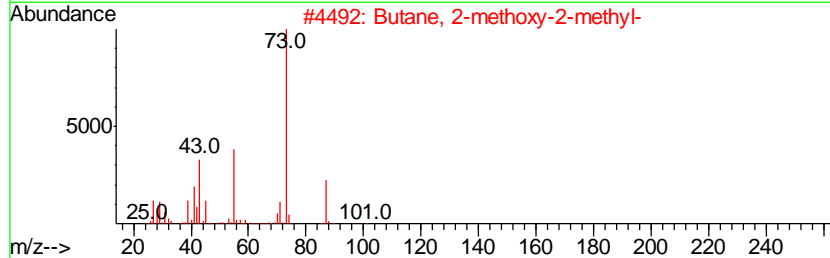
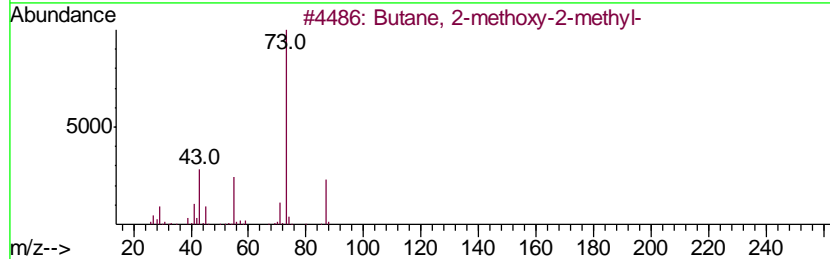
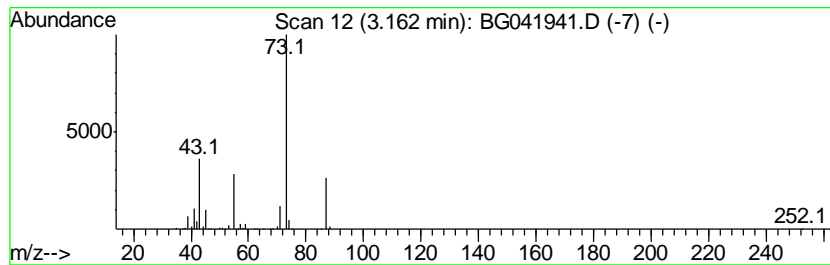
Quant Method : Z:\SVOASRV\HPCHEM1\BNA_G\METHODS\SOM-EPA-BG080319MA.M
 Quant Title : SVOA CALIBRATION

TIC Library : C:\DATABASE\NIST11.L
 TIC Integration Parameters: LSCINT.P

 Peak Number 1 Butane, 2-methoxy-2-methyl- Concentration Rank 12

R.T.	EstConc	Area	Relative to ISTD	R.T.
3.16	19.70 ng/ul	529525	1,4-Dichlorobenzene-d4	8.04

Hit#	of	Tentative ID	MW	MolForm	CAS#	Qual
1	5	Butane, 2-methoxy-2-methyl-	102	C6H14O	000994-05-8	78
2		Butane, 2-methoxy-2-methyl-	102	C6H14O	000994-05-8	50
3		2,2,4-Trimethyl-3-pentanol	130	C8H18O	005162-48-1	40
4		2,2,4-Trimethyl-3-pentanol	130	C8H18O	005162-48-1	40
5		Pentane, 3-methoxy-	102	C6H14O	036839-67-5	12



Data Path : Z:\SVOASRV\HPCHEM1\BNA G\DATA\BG080319\
 Data File : BG041941.D
 Acq On : 4 Aug 2019 13:46
 Operator : HP/JU
 Sample : K3850-09
 Misc :
 ALS Vial : 42 Sample Multiplier: 1

Instrument :
 BNA_G
 ClientSampled :
 BENQ3

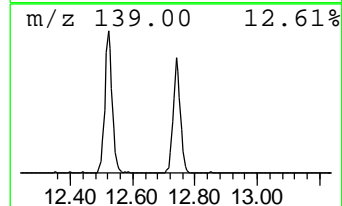
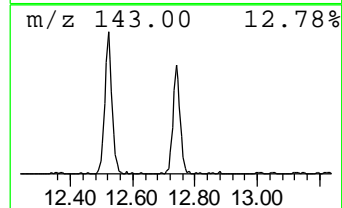
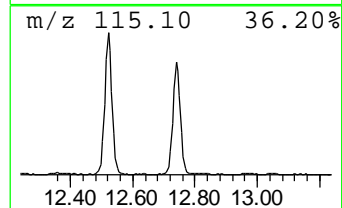
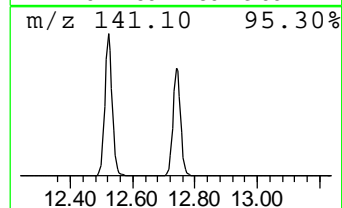
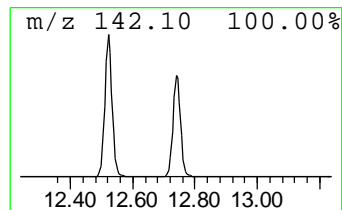
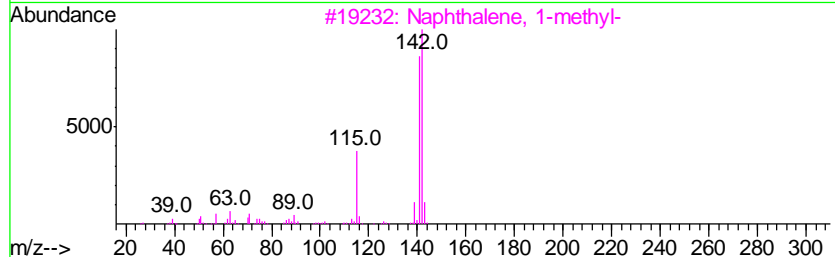
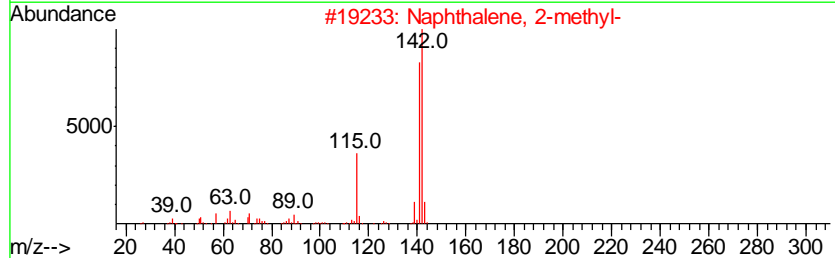
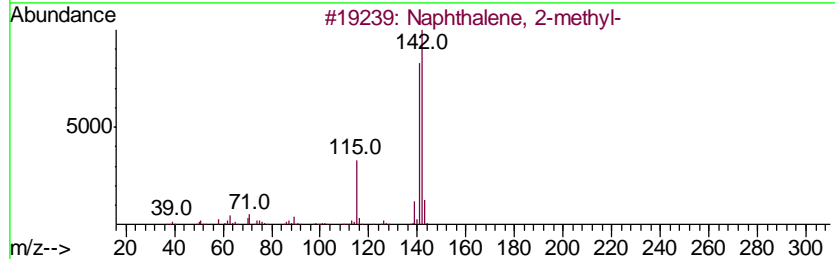
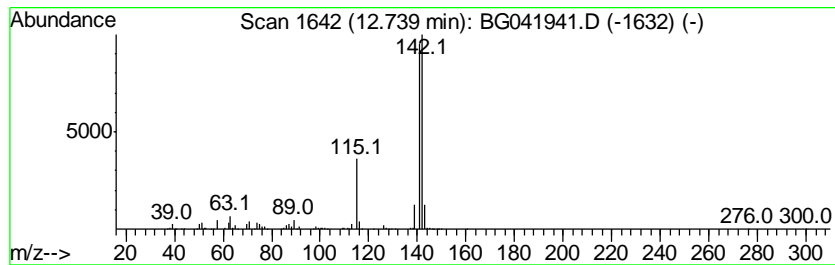
Quant Method : Z:\SVOASRV\HPCHEM1\BNA_G\METHODS\SOM-EPA-BG080319MA.M
 Quant Title : SVOA CALIBRATION

TIC Library : C:\DATABASE\NIST11.L
 TIC Integration Parameters: LSCINT.P

 Peak Number 2 Naphthalene, 1-methyl- Concentration Rank 15

R.T.	EstConc	Area	Relative to ISTD	R.T.
12.74	17.68 ng/ul	703893	Naphthalene-d8	10.86

Hit#	of	Tentative ID	MW	MolForm	CAS#	Qual
1	5	Naphthalene, 2-methyl-	142	C11H10	000091-57-6	95
2		Naphthalene, 2-methyl-	142	C11H10	000091-57-6	95
3		Naphthalene, 1-methyl-	142	C11H10	000090-12-0	95
4		1,4-Methanonaphthalene, 1,4-dihy...	142	C11H10	004453-90-1	91
5		Naphthalene, 2-methyl-	142	C11H10	000091-57-6	91



Data Path : Z:\SVOASRV\HPCHEM1\BNA G\DATA\BG080319\
 Data File : BG041941.D
 Acq On : 4 Aug 2019 13:46
 Operator : HP/JU
 Sample : K3850-09
 Misc :
 ALS Vial : 42 Sample Multiplier: 1

Instrument :
 BNA_G
 ClientSampleID :
 BENQ3

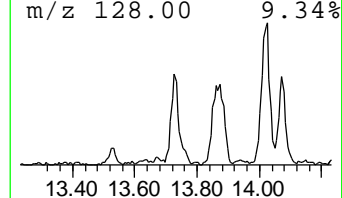
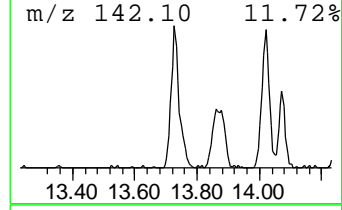
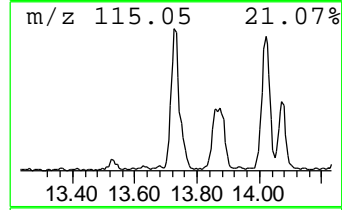
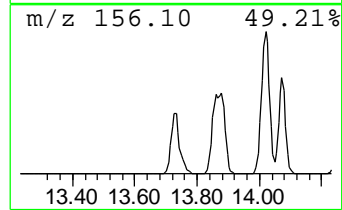
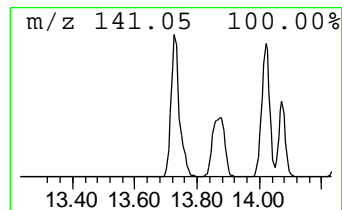
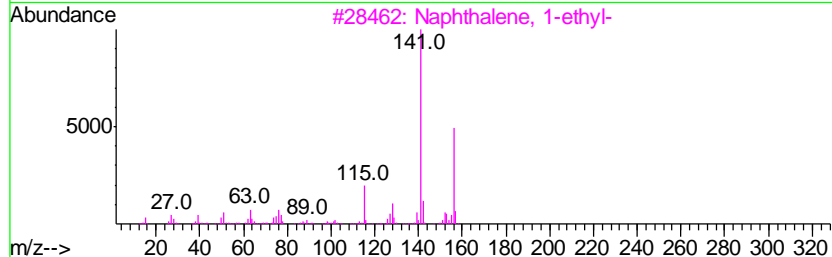
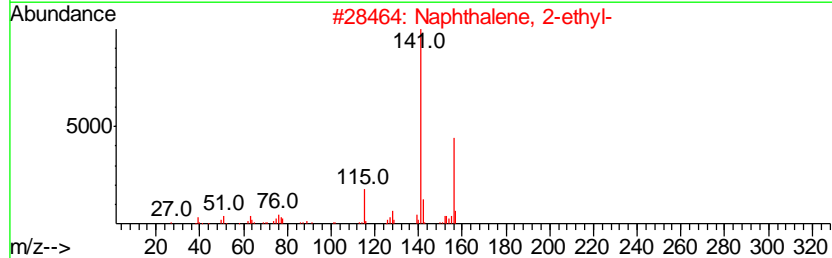
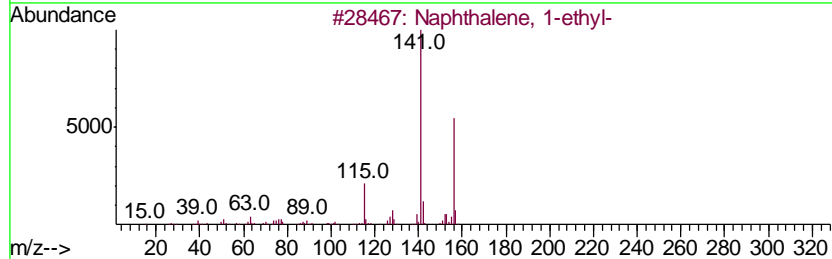
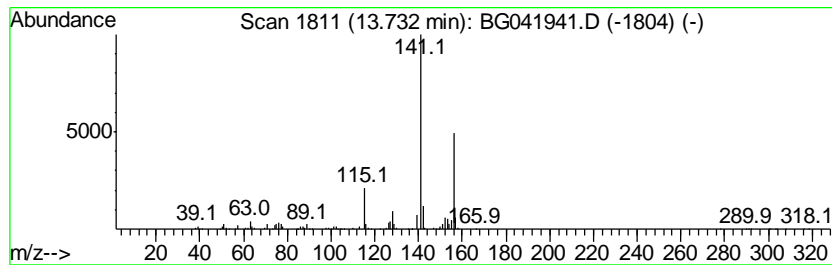
Quant Method : Z:\SVOASRV\HPCHEM1\BNA_G\METHODS\SOM-EPA-BG080319MA.M
 Quant Title : SVOA CALIBRATION

TIC Library : C:\DATABASE\NIST11.L
 TIC Integration Parameters: LSCINT.P

 Peak Number 3 Naphthalene, 1-ethyl- Concentration Rank 28

R.T.	EstConc	Area	Relative to ISTD	R.T.
13.73	8.26 ng/ul	552039	Acenaphthene-d10	14.70

Hit#	of	Tentative ID	MW	MolForm	CAS#	Qual
1	5	Naphthalene, 1-ethyl-	156	C12H12	001127-76-0	97
2		Naphthalene, 2-ethyl-	156	C12H12	000939-27-5	94
3		Naphthalene, 1-ethyl-	156	C12H12	001127-76-0	94
4		Naphthalene, 2-ethyl-	156	C12H12	000939-27-5	93
5		Naphthalene, 2-ethyl-	156	C12H12	000939-27-5	93



Data Path : Z:\SVOASRV\HPCHEM1\BNA G\DATA\BG080319\
 Data File : BG041941.D
 Acq On : 4 Aug 2019 13:46
 Operator : HP/JU
 Sample : K3850-09
 Misc :
 ALS Vial : 42 Sample Multiplier: 1

Instrument :
 BNA_G
 ClientSampleID :
 BENQ3

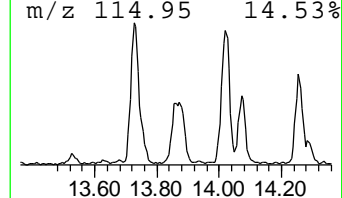
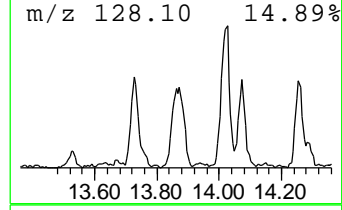
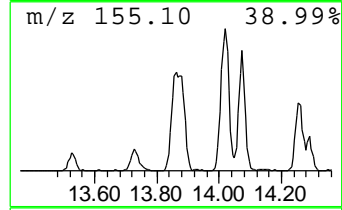
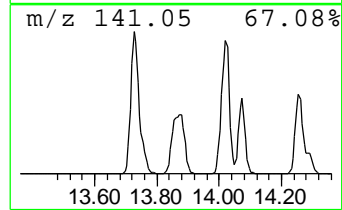
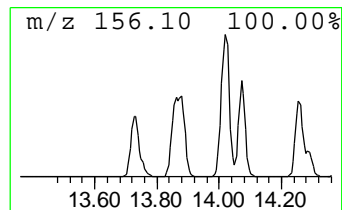
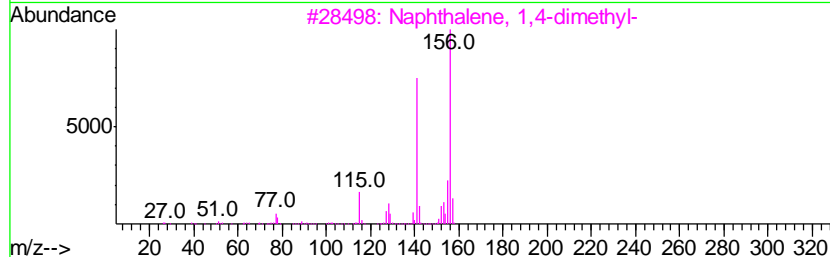
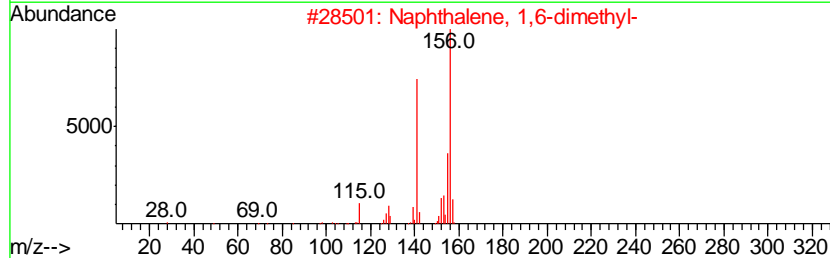
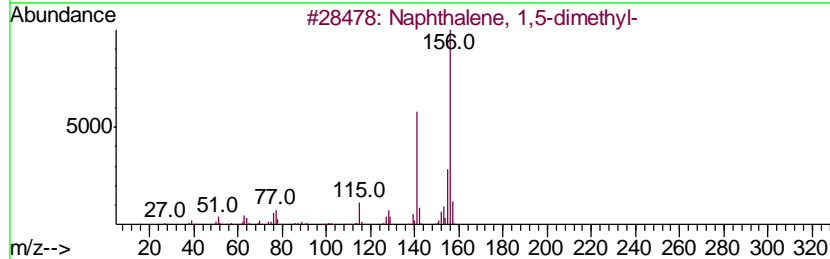
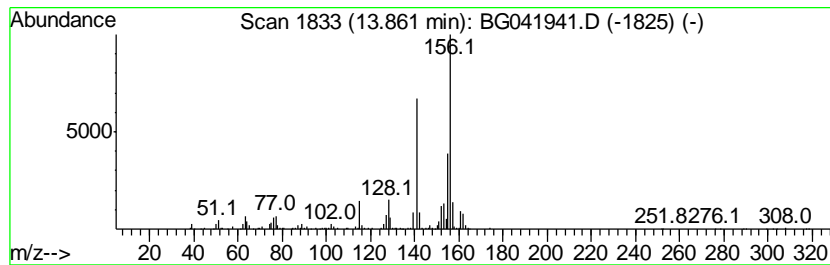
Quant Method : Z:\SVOASRV\HPCHEM1\BNA_G\METHODS\SOM-EPA-BG080319MA.M
 Quant Title : SVOA CALIBRATION

TIC Library : C:\DATABASE\NIST11.L
 TIC Integration Parameters: LSCINT.P

 Peak Number 4 Naphthalene, 1,5-dimethyl- Concentration Rank 40

R.T.	EstConc	Area	Relative to ISTD	R.T.
13.86	5.62 ng/ul	375435	Acenaphthene-d10	14.70

Hit#	of	Tentative ID	MW	MolForm	CAS#	Qual
1	5	Naphthalene, 1,5-dimethyl-	156	C12H12	000571-61-9	96
2		Naphthalene, 1,6-dimethyl-	156	C12H12	000575-43-9	95
3		Naphthalene, 1,4-dimethyl-	156	C12H12	000571-58-4	95
4		Naphthalene, 2,6-dimethyl-	156	C12H12	000581-42-0	95
5		Naphthalene, 1,4-dimethyl-	156	C12H12	000571-58-4	95



Data Path : Z:\SVOASRV\HPCHEM1\BNA G\DATA\BG080319\
 Data File : BG041941.D
 Acq On : 4 Aug 2019 13:46
 Operator : HP/JU
 Sample : K3850-09
 Misc :
 ALS Vial : 42 Sample Multiplier: 1

Instrument :
 BNA_G
 ClientSampleID :
 BENQ3

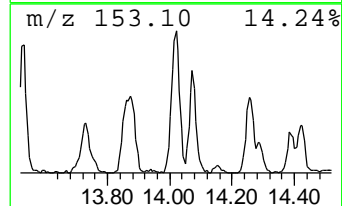
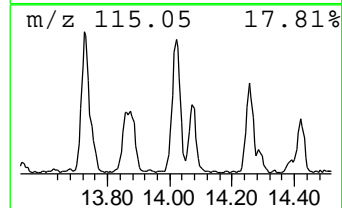
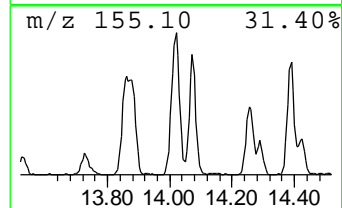
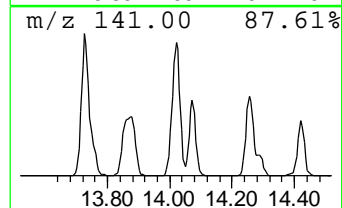
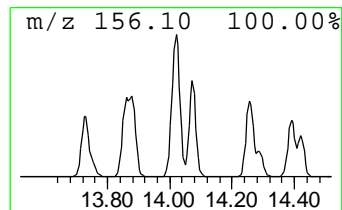
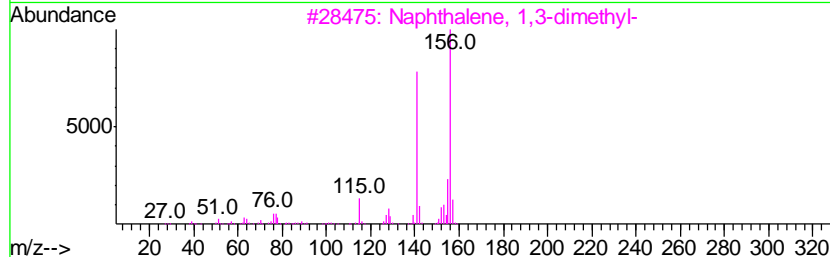
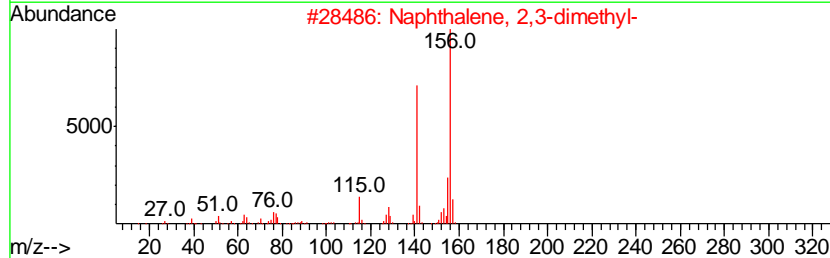
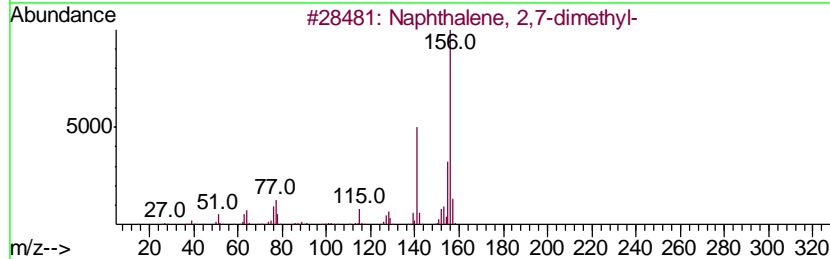
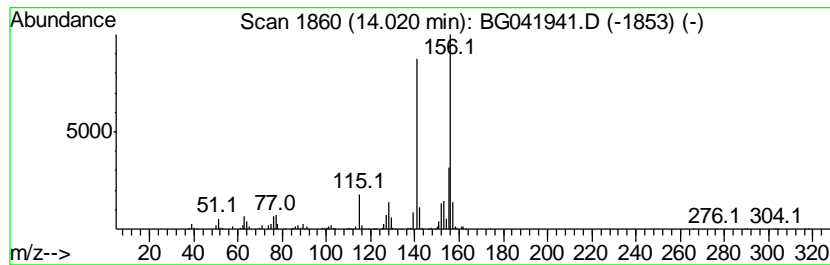
Quant Method : Z:\SVOASRV\HPCHEM1\BNA_G\METHODS\SOM-EPA-BG080319MA.M
 Quant Title : SVOA CALIBRATION

TIC Library : C:\DATABASE\NIST11.L
 TIC Integration Parameters: LSCINT.P

 Peak Number 5 Naphthalene, 2,7-dimethyl- Concentration Rank 18

R.T.	EstConc	Area	Relative to ISTD	R.T.
14.02	12.31 ng/ul	822539	Acenaphthene-d10	14.70

Hit#	of	Tentative ID	MW	MolForm	CAS#	Qual
1	5	Naphthalene, 2,7-dimethyl-	156	C12H12	000582-16-1	97
2		Naphthalene, 2,3-dimethyl-	156	C12H12	000581-40-8	97
3		Naphthalene, 1,3-dimethyl-	156	C12H12	000575-41-7	96
4		Naphthalene, 1,4-dimethyl-	156	C12H12	000571-58-4	96
5		Naphthalene, 1,4-dimethyl-	156	C12H12	000571-58-4	96



Data Path : Z:\SVOASRV\HPCHEM1\BNA G\DATA\BG080319\
 Data File : BG041941.D
 Acq On : 4 Aug 2019 13:46
 Operator : HP/JU
 Sample : K3850-09
 Misc :
 ALS Vial : 42 Sample Multiplier: 1

Instrument :
 BNA_G
 ClientSampleId :
 BENQ3

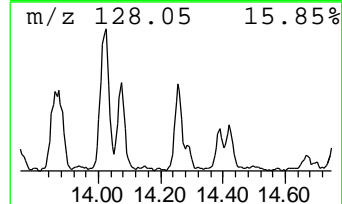
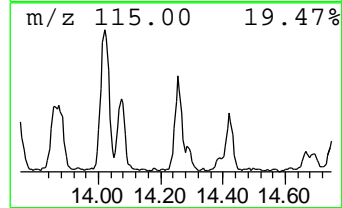
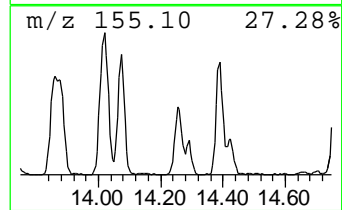
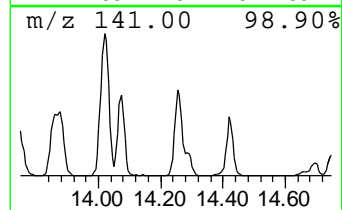
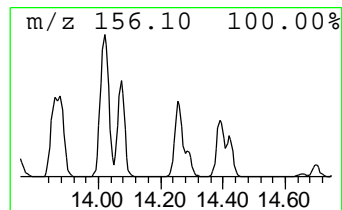
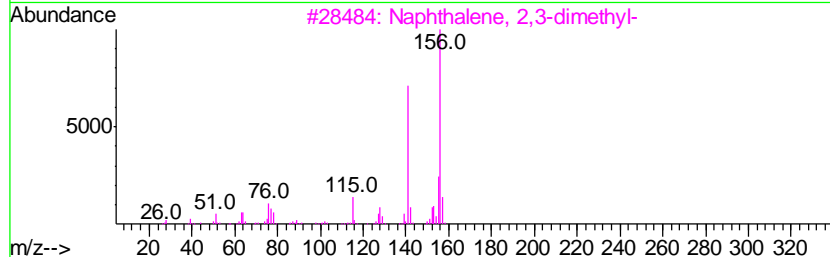
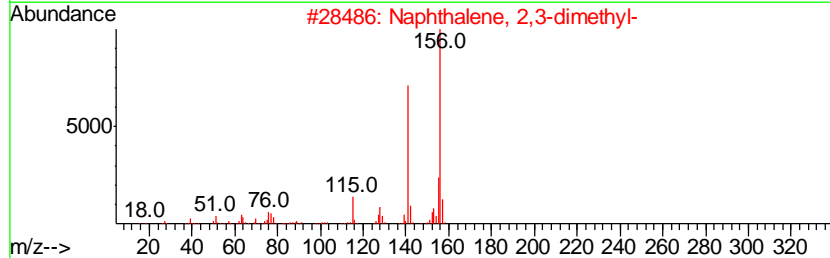
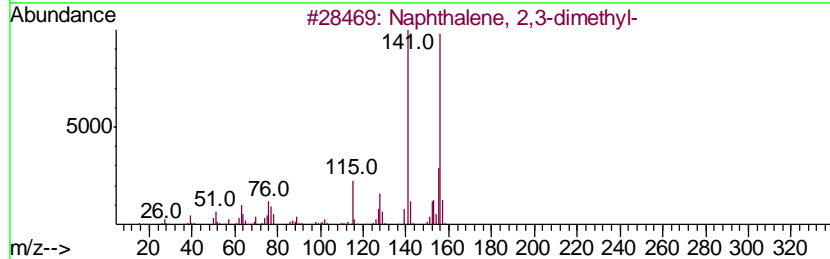
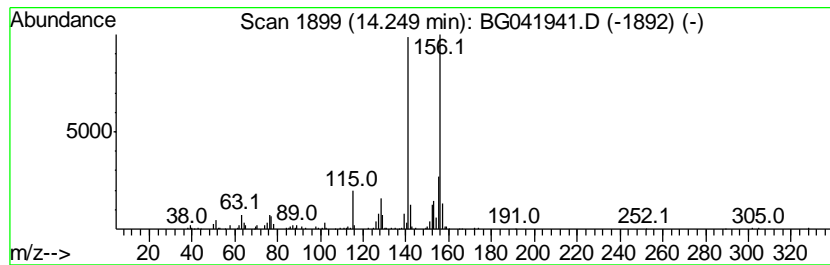
Quant Method : Z:\SVOASRV\HPCHEM1\BNA_G\METHODS\SOM-EPA-BG080319MA.M
 Quant Title : SVOA CALIBRATION

TIC Library : C:\DATABASE\NIST11.L
 TIC Integration Parameters: LSCINT.P

 Peak Number 6 Naphthalene, 2,3-dimethyl- Concentration Rank 37

R.T.	EstConc	Area	Relative to ISTD	R.T.
14.25	6.40 ng/ul	427765	Acenaphthene-d10	14.70

Hit#	of	Tentative ID	MW	MolForm	CAS#	Qual
1	5	Naphthalene, 2,3-dimethyl-	156	C12H12	000581-40-8	97
2		Naphthalene, 2,3-dimethyl-	156	C12H12	000581-40-8	97
3		Naphthalene, 2,3-dimethyl-	156	C12H12	000581-40-8	96
4		Naphthalene, 1,5-dimethyl-	156	C12H12	000571-61-9	96
5		Naphthalene, 1,6-dimethyl-	156	C12H12	000575-43-9	96



Data Path : Z:\SVOASRV\HPCHEM1\BNA G\DATA\BG080319\
 Data File : BG041941.D
 Acq On : 4 Aug 2019 13:46
 Operator : HP/JU
 Sample : K3850-09
 Misc :
 ALS Vial : 42 Sample Multiplier: 1

Instrument :
 BNA_G
 ClientSampleId :
 BENQ3

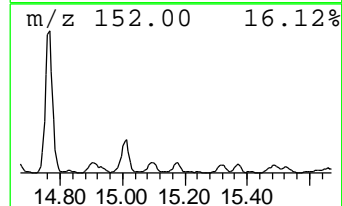
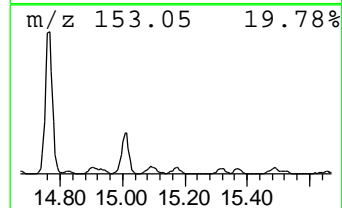
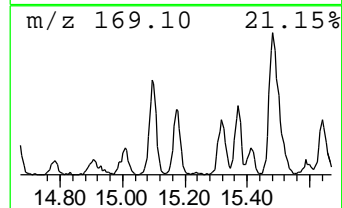
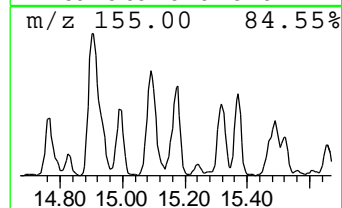
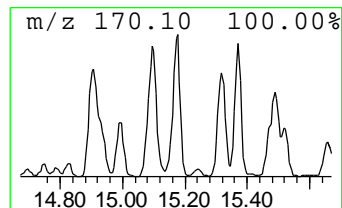
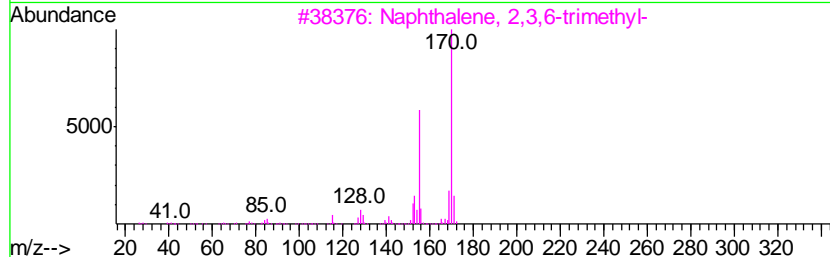
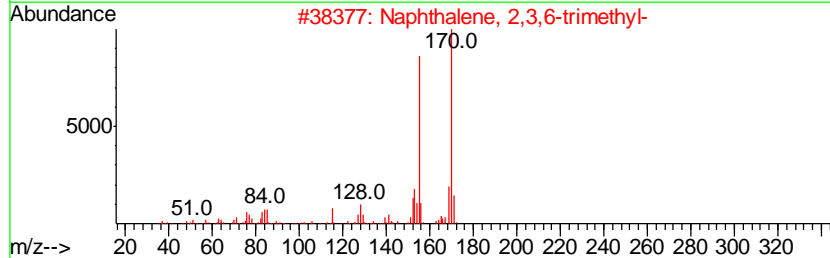
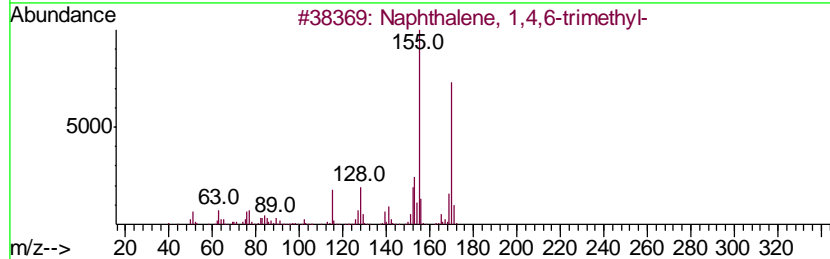
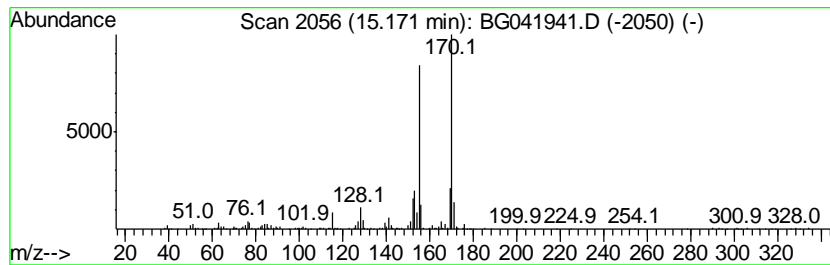
Quant Method : Z:\SVOASRV\HPCHEM1\BNA_G\METHODS\SOM-EPA-BG080319MA.M
 Quant Title : SVOA CALIBRATION

TIC Library : C:\DATABASE\NIST11.L
 TIC Integration Parameters: LSCINT.P

 Peak Number 8 Naphthalene, 1,4,6-trimethyl- Concentration Rank 44

R.T.	EstConc	Area	Relative to ISTD	R.T.
15.17	5.00 ng/ul	333797	Acenaphthene-d10	14.70

Hit#	of	Tentative ID	MW	MolForm	CAS#	Qual
1	5	Naphthalene, 1,4,6-trimethyl-	170	C13H14	002131-42-2	97
2		Naphthalene, 2,3,6-trimethyl-	170	C13H14	000829-26-5	95
3		Naphthalene, 2,3,6-trimethyl-	170	C13H14	000829-26-5	95
4		Naphthalene, 1,6,7-trimethyl-	170	C13H14	002245-38-7	94
5		Naphthalene, 1,6,7-trimethyl-	170	C13H14	002245-38-7	94



Data Path : Z:\SVOASRV\HPCHEM1\BNA G\DATA\BG080319\
 Data File : BG041941.D
 Acq On : 4 Aug 2019 13:46
 Operator : HP/JU
 Sample : K3850-09
 Misc :
 ALS Vial : 42 Sample Multiplier: 1

Instrument :
 BNA_G
 ClientSampled :
 BENQ3

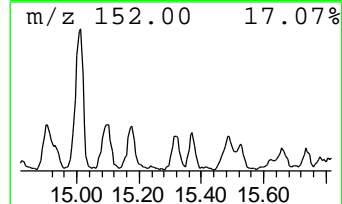
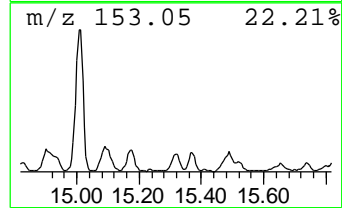
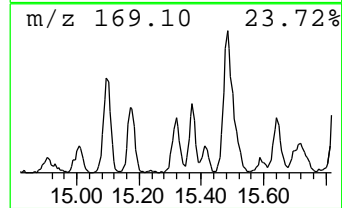
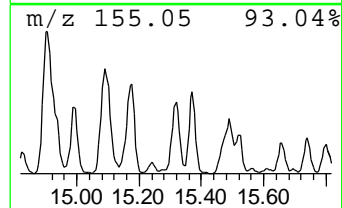
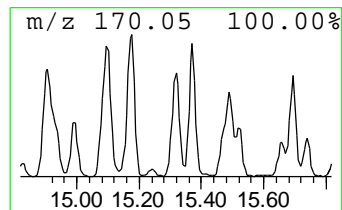
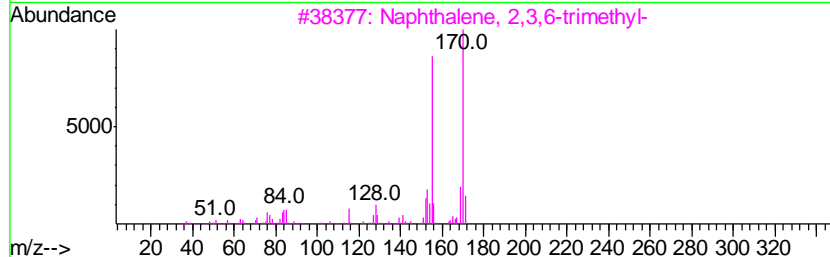
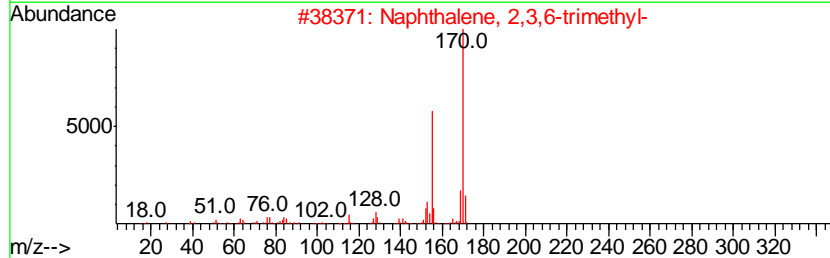
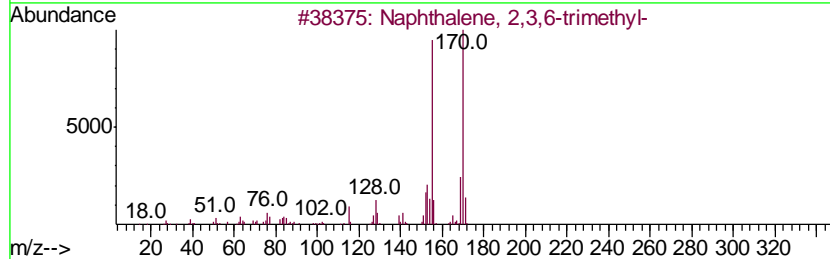
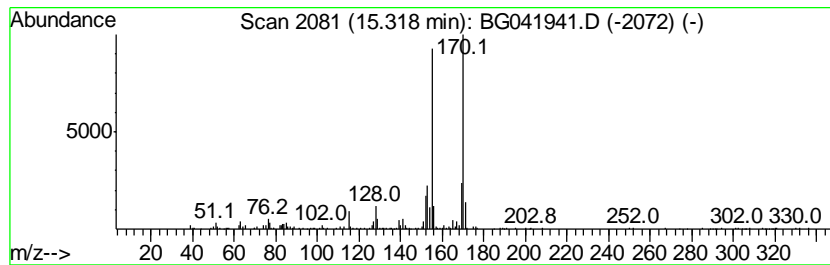
Quant Method : Z:\SVOASRV\HPCHEM1\BNA_G\METHODS\SOM-EPA-BG080319MA.M
 Quant Title : SVOA CALIBRATION

TIC Library : C:\DATABASE\NIST11.L
 TIC Integration Parameters: LSCINT.P

 Peak Number 9 Naphthalene, 2,3,6-trimethyl- Concentration Rank 45

R.T.	EstConc	Area	Relative to ISTD	R.T.
15.32	4.58 ng/ul	305909	Acenaphthene-d10	14.70

Hit#	of	Tentative ID	MW	MolForm	CAS#	Qual
1	5	Naphthalene, 2,3,6-trimethyl-	170	C13H14	000829-26-5	98
2		Naphthalene, 2,3,6-trimethyl-	170	C13H14	000829-26-5	97
3		Naphthalene, 2,3,6-trimethyl-	170	C13H14	000829-26-5	97
4		Naphthalene, 1,6,7-trimethyl-	170	C13H14	002245-38-7	97
5		Naphthalene, 1,6,7-trimethyl-	170	C13H14	002245-38-7	97



Data Path : Z:\SVOASRV\HPCHEM1\BNA G\DATA\BG080319\
 Data File : BG041941.D
 Acq On : 4 Aug 2019 13:46
 Operator : HP/JU
 Sample : K3850-09
 Misc :
 ALS Vial : 42 Sample Multiplier: 1

Instrument :
 BNA_G
 ClientSampled :
 BENQ3

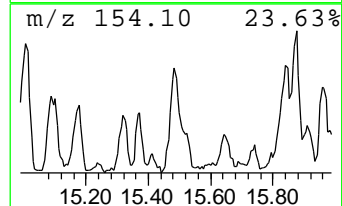
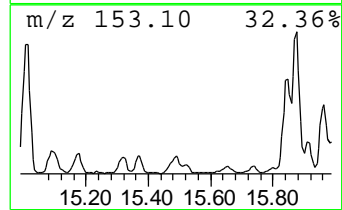
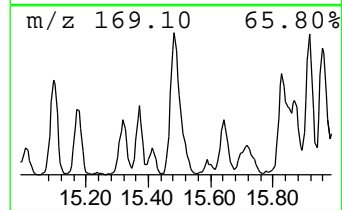
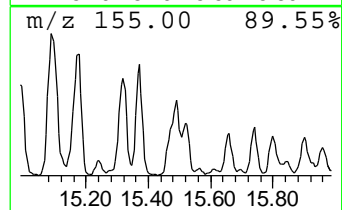
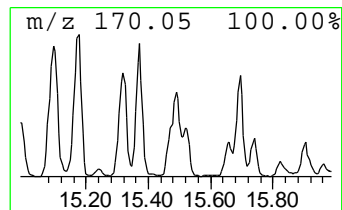
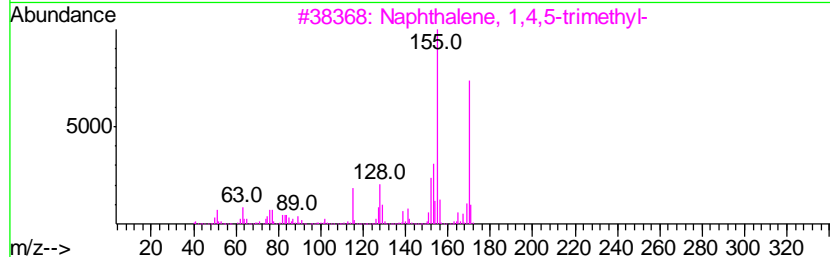
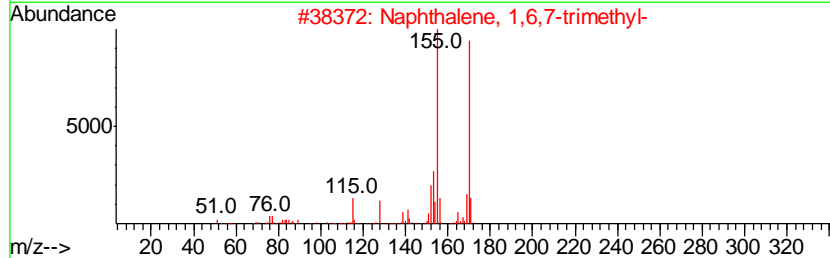
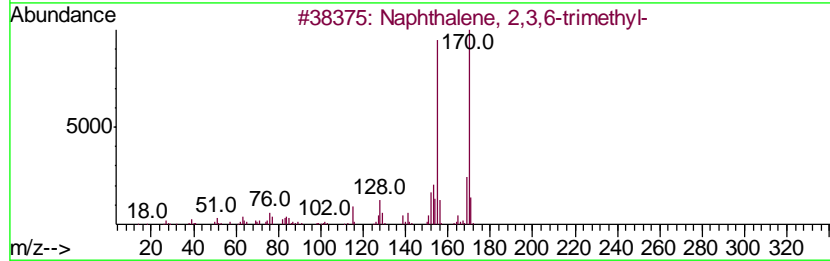
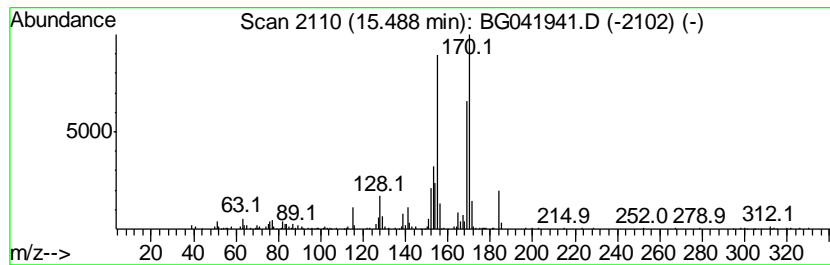
Quant Method : Z:\SVOASRV\HPCHEM1\BNA_G\METHODS\SOM-EPA-BG080319MA.M
 Quant Title : SVOA CALIBRATION

TIC Library : C:\DATABASE\NIST11.L
 TIC Integration Parameters: LSCINT.P

 Peak Number 10 Naphthalene, 1,6,7-trimethyl- Concentration Rank 41

R.T.	EstConc	Area	Relative to ISTD	R.T.
15.49	5.61 ng/ul	374983	Acenaphthene-d10	14.70

Hit#	of	Tentative ID	MW	MolForm	CAS#	Qual
1	5	Naphthalene, 2,3,6-trimethyl-	170	C13H14	000829-26-5	95
2		Naphthalene, 1,6,7-trimethyl-	170	C13H14	002245-38-7	94
3		Naphthalene, 1,4,5-trimethyl-	170	C13H14	002131-41-1	92
4		4,6,8-Trimethylazulene	170	C13H14	000941-81-1	90
5		Naphthalene, 1,6,7-trimethyl-	170	C13H14	002245-38-7	81



Data Path : Z:\SVOASRV\HPCHEM1\BNA G\DATA\BG080319\
 Data File : BG041941.D
 Acq On : 4 Aug 2019 13:46
 Operator : HP/JU
 Sample : K3850-09
 Misc :
 ALS Vial : 42 Sample Multiplier: 1

Instrument :
 BNA_G
 ClientSampleId :
 BENQ3

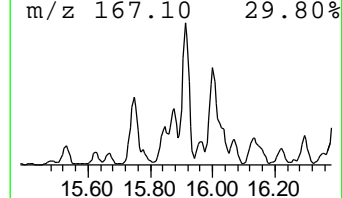
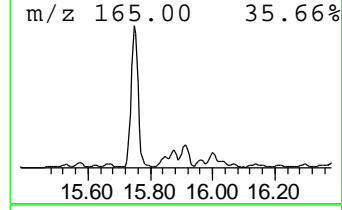
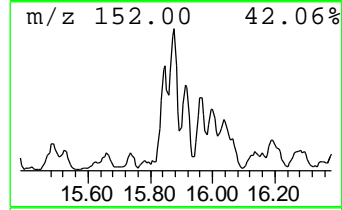
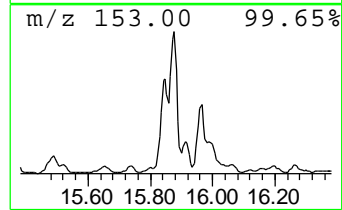
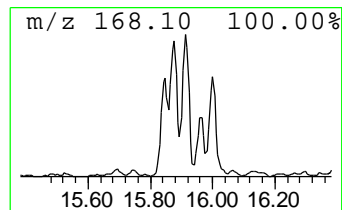
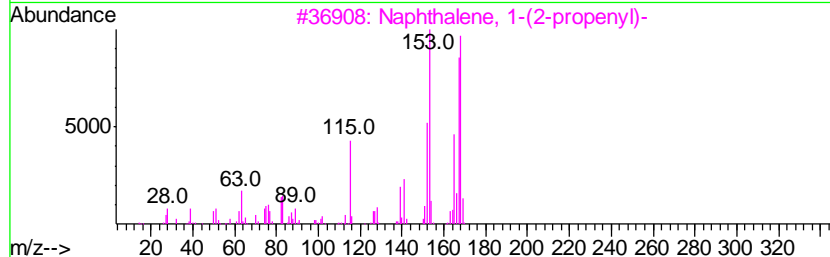
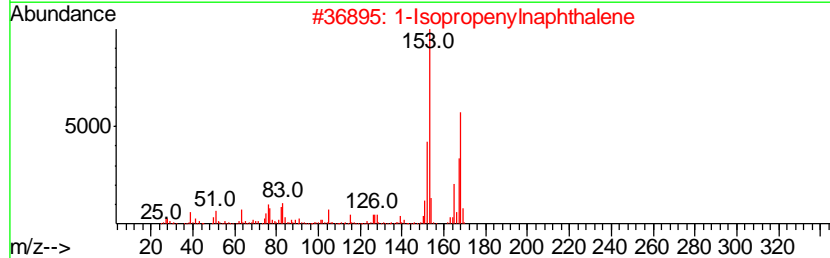
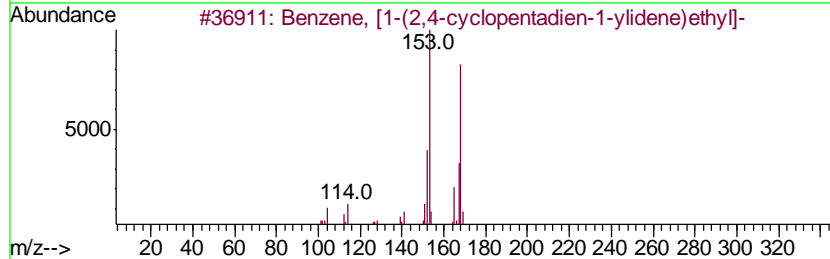
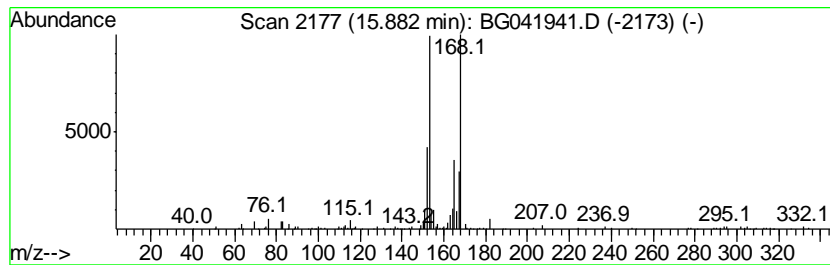
Quant Method : Z:\SVOASRV\HPCHEM1\BNA_G\METHODS\SOM-EPA-BG080319MA.M
 Quant Title : SVOA CALIBRATION

TIC Library : C:\DATABASE\NIST11.L
 TIC Integration Parameters: LSCINT.P

 Peak Number 11 Benzene, [1-(2,4-cyclopenta... Concentration Rank 43

R.T.	EstConc	Area	Relative to ISTD	R.T.
15.88	5.08 ng/ul	339620	Acenaphthene-d10	14.70

Hit#	of	Tentative ID	MW	MolForm	CAS#	Qual
1	5	Benzene, [1-(2,4-cyclopentadien-...	168	C13H12	002320-32-3	83
2		1-Isopropenylnaphthalene	168	C13H12	001855-47-6	50
3		Naphthalene, 1-(2-propenyl)-	168	C13H12	002489-86-3	50
4		1,1'-Biphenyl, 3-methyl-	168	C13H12	000643-93-6	47
5		2-(1-Carboxy-1-methylethyl)-4-me...	212	C10H12O5	052183-02-5	33



Data Path : Z:\SVOASRV\HPCHEM1\BNA G\DATA\BG080319\
 Data File : BG041941.D
 Acq On : 4 Aug 2019 13:46
 Operator : HP/JU
 Sample : K3850-09
 Misc :
 ALS Vial : 42 Sample Multiplier: 1

Instrument :
 BNA_G
 ClientSampleId :
 BENQ3

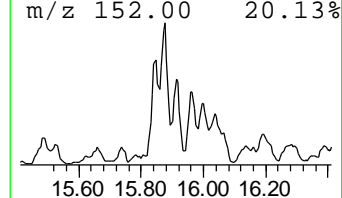
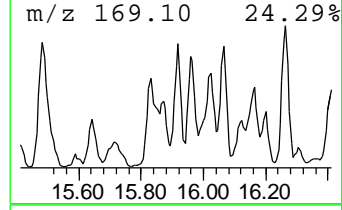
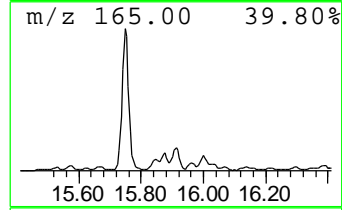
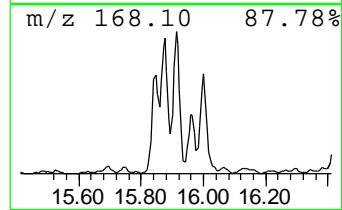
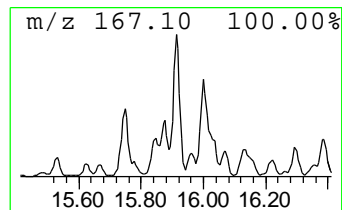
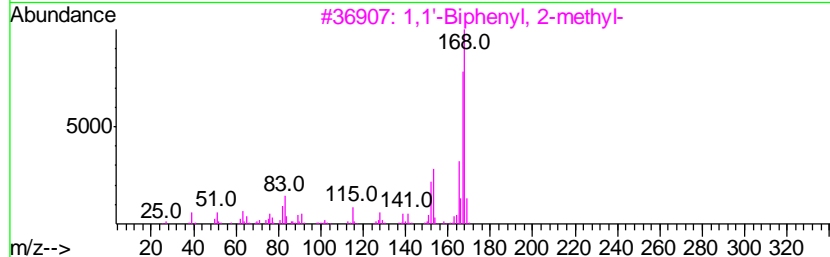
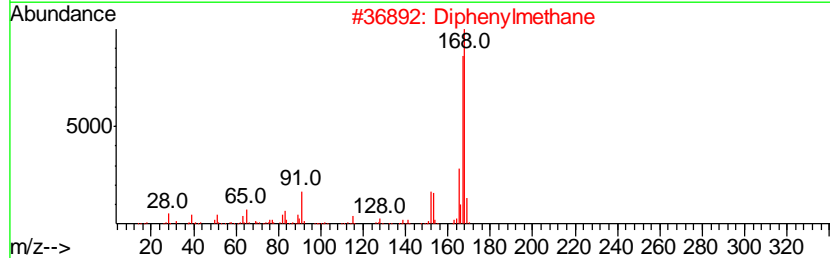
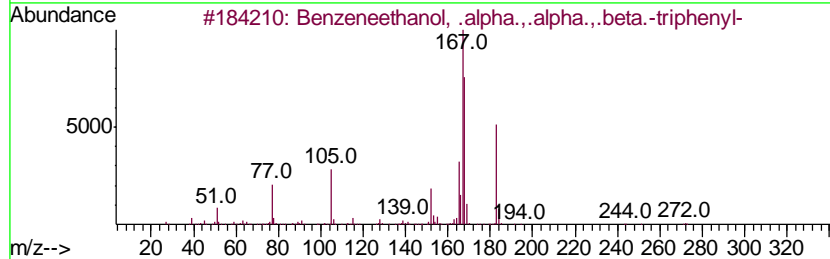
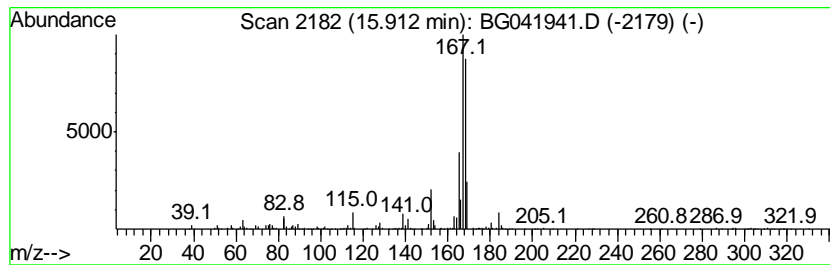
Quant Method : Z:\SVOASRV\HPCHEM1\BNA_G\METHODS\SOM-EPA-BG080319MA.M
 Quant Title : SVOA CALIBRATION

TIC Library : C:\DATABASE\NIST11.L
 TIC Integration Parameters: LSCINT.P

 Peak Number 12 Benzeneethanol, .alpha.,.al... Concentration Rank 34

R.T.	EstConc	Area	Relative to ISTD	R.T.
15.91	6.95 ng/ul	464518	Acenaphthene-d10	14.70

Hit#	of	Tentative ID	MW	MolForm	CAS#	Qual
1	5	Benzeneethanol, .alpha.,.alpha.,...	350	C26H22O	000981-24-8	90
2		Diphenylmethane	168	C13H12	000101-81-5	64
3		1,1'-Biphenyl, 2-methyl-	168	C13H12	000643-58-3	64
4		Diphenylmethane	168	C13H12	000101-81-5	64
5		4-Propyl-1,1'-diphenyl	196	C15H16	010289-45-9	53



Data Path : Z:\SVOASRV\HPCHEM1\BNA G\DATA\BG080319\
 Data File : BG041941.D
 Acq On : 4 Aug 2019 13:46
 Operator : HP/JU
 Sample : K3850-09
 Misc :
 ALS Vial : 42 Sample Multiplier: 1

Instrument :
 BNA_G
 ClientSampled :
 BENQ3

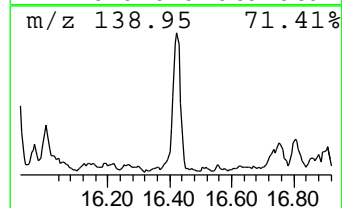
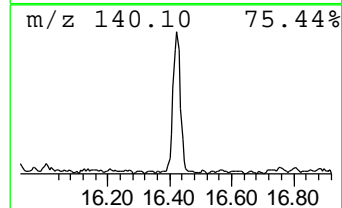
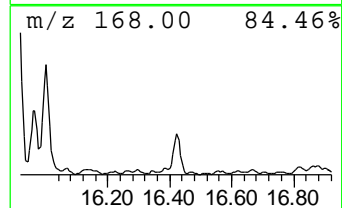
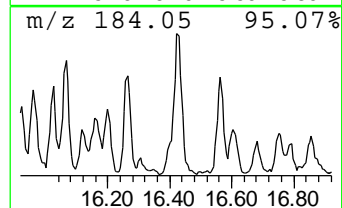
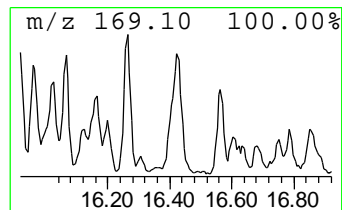
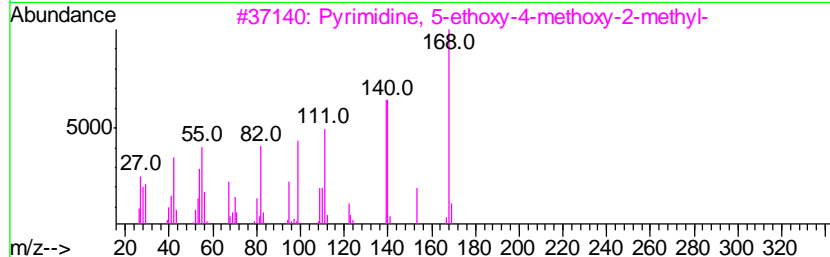
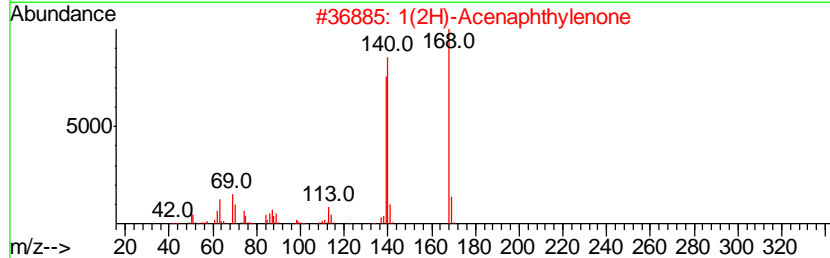
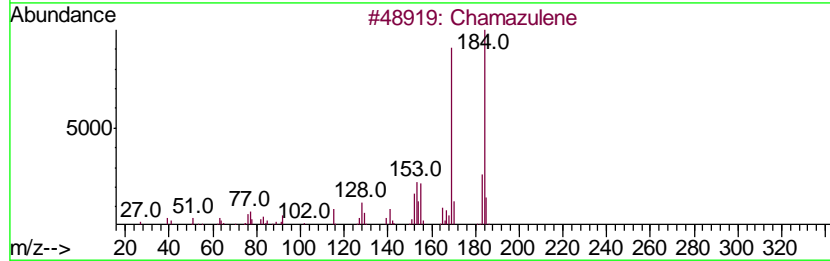
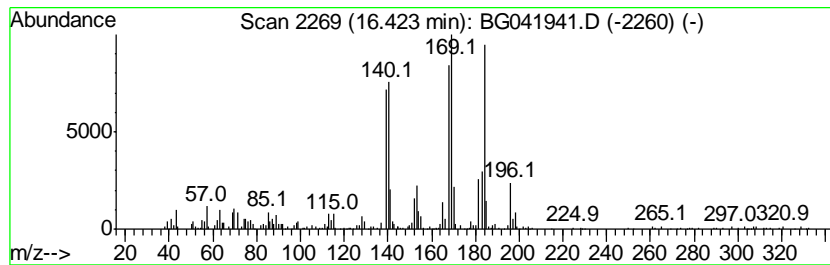
Quant Method : Z:\SVOASRV\HPCHEM1\BNA_G\METHODS\SOM-EPA-BG080319MA.M
 Quant Title : SVOA CALIBRATION

TIC Library : C:\DATABASE\NIST11.L
 TIC Integration Parameters: LSCINT.P

 Peak Number 13 unknown-01 Concentration Rank 27

R.T.	EstConc	Area	Relative to ISTD	R.T.
16.42	8.31 ng/ul	460315	Phenanthrene-d10	17.46

Hit#	of	Tentative ID	MW	MolForm	CAS#	Qual
1	5	Chamazulene	184	C14H16	000529-05-5	46
2		1(2H)-Acenaphthylenone	168	C12H8O	002235-15-6	46
3		Pyrimidine, 5-ethoxy-4-methoxy-2...	168	C8H12N2O2	024614-12-8	38
4		Naphthalene, 1-methyl-7-(1-methy...	184	C14H16	000490-65-3	38
5		Cyclopentene, 1,2-dimethyl-4-met...	184	C14H16	1000152-22-4	30



Data Path : Z:\SVOASRV\HPCHEM1\BNA G\DATA\BG080319\
 Data File : BG041941.D
 Acq On : 4 Aug 2019 13:46
 Operator : HP/JU
 Sample : K3850-09
 Misc :
 ALS Vial : 42 Sample Multiplier: 1

Instrument :
 BNA_G
 ClientSampleId :
 BENQ3

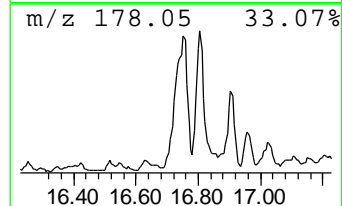
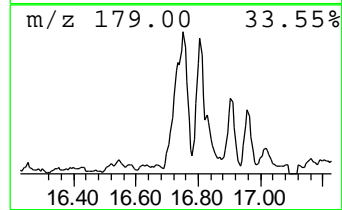
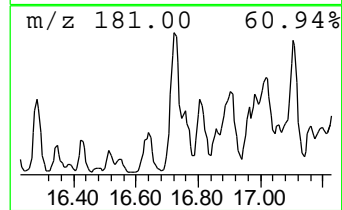
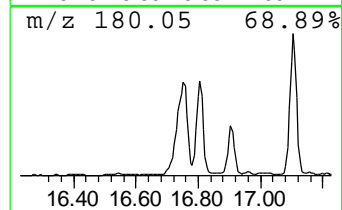
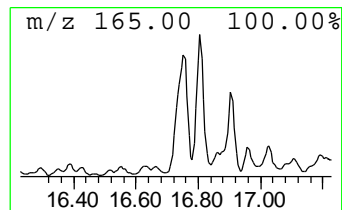
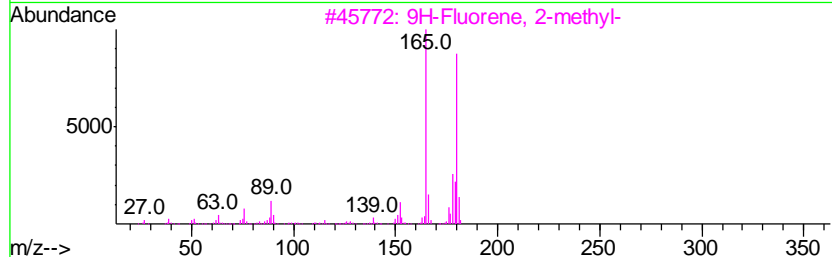
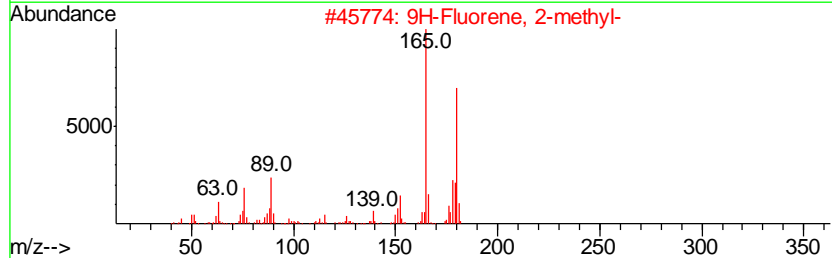
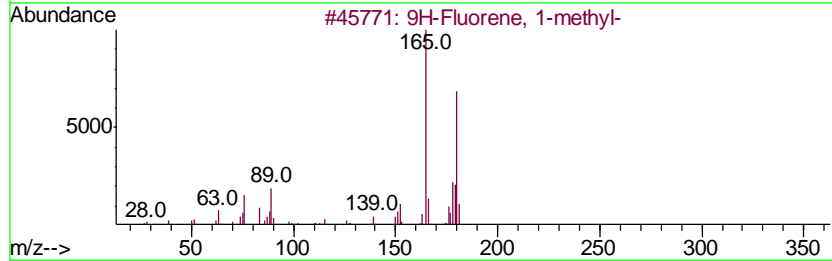
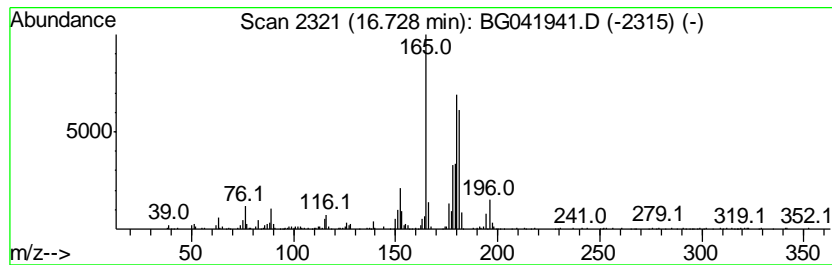
Quant Method : Z:\SVOASRV\HPCHEM1\BNA_G\METHODS\SOM-EPA-BG080319MA.M
 Quant Title : SVOA CALIBRATION

TIC Library : C:\DATABASE\NIST11.L
 TIC Integration Parameters: LSCINT.P

 Peak Number 14 9H-Fluorene, 1-methyl- Concentration Rank 32

R.T.	EstConc	Area	Relative to ISTD	R.T.
16.73	7.15 ng/ul	396078	Phenanthrene-d10	17.46

Hit#	of	Tentative ID	MW	MolForm	CAS#	Qual
1	5	9H-Fluorene, 1-methyl-	180	C14H12	001730-37-6	96
2		9H-Fluorene, 2-methyl-	180	C14H12	001430-97-3	94
3		9H-Fluorene, 2-methyl-	180	C14H12	001430-97-3	92
4		9H-Fluorene, 1-methyl-	180	C14H12	001730-37-6	91
5		4a,9a-Methano-9H-fluorene	180	C14H12	019540-84-2	83



Data Path : Z:\SVOASRV\HPCHEM1\BNA G\DATA\BG080319\
 Data File : BG041941.D
 Acq On : 4 Aug 2019 13:46
 Operator : HP/JU
 Sample : K3850-09
 Misc :
 ALS Vial : 42 Sample Multiplier: 1

Instrument :
 BNA_G
 ClientSampleID :
 BENQ3

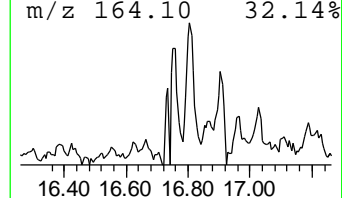
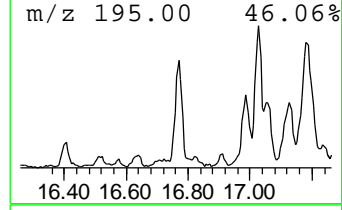
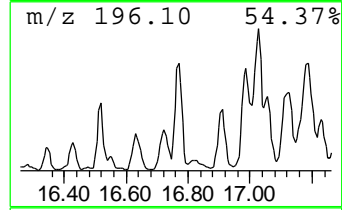
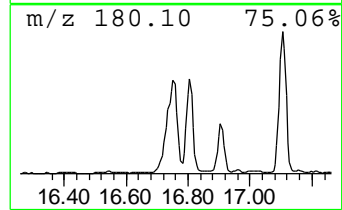
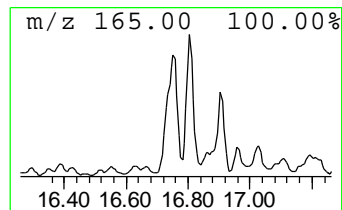
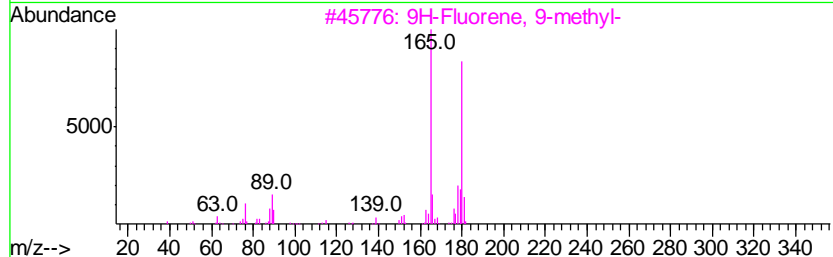
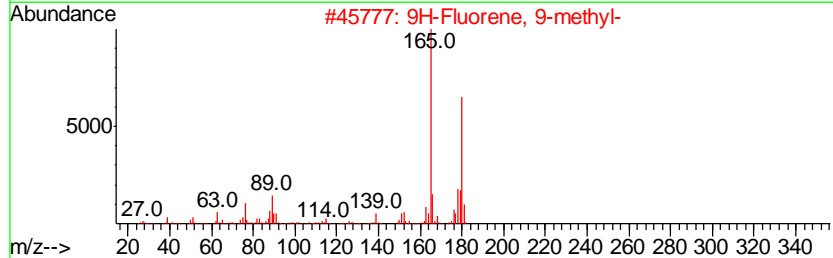
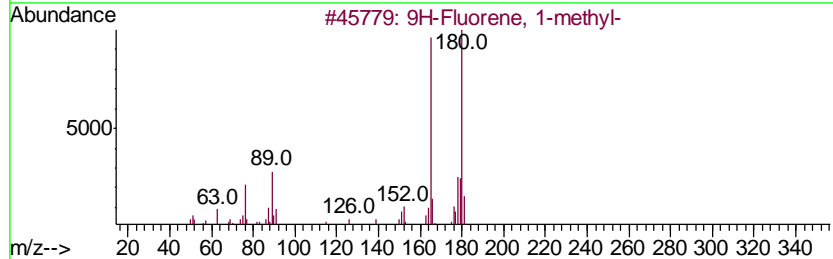
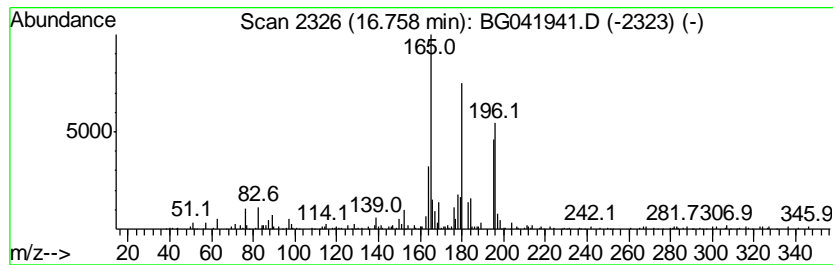
Quant Method : Z:\SVOASRV\HPCHEM1\BNA_G\METHODS\SOM-EPA-BG080319MA.M
 Quant Title : SVOA CALIBRATION

TIC Library : C:\DATABASE\NIST11.L
 TIC Integration Parameters: LSCINT.P

 Peak Number 15 9H-Fluorene, 9-methyl- Concentration Rank 26

R.T.	EstConc	Area	Relative to ISTD	R.T.
16.76	8.77 ng/ul	485813	Phenanthrene-d10	17.46

Hit#	of	Tentative ID	MW	MolForm	CAS#	Qual
1	5	9H-Fluorene, 1-methyl-	180	C14H12	001730-37-6	55
2		9H-Fluorene, 9-methyl-	180	C14H12	002523-37-7	55
3		9H-Fluorene, 9-methyl-	180	C14H12	002523-37-7	49
4		9H-Fluorene, 1-methyl-	180	C14H12	001730-37-6	49
5		9H-Fluorene, 2-methyl-	180	C14H12	001430-97-3	49



Data Path : Z:\SVOASRV\HPCHEM1\BNA G\DATA\BG080319\
 Data File : BG041941.D
 Acq On : 4 Aug 2019 13:46
 Operator : HP/JU
 Sample : K3850-09
 Misc :
 ALS Vial : 42 Sample Multiplier: 1

Instrument :
 BNA_G
 ClientSampleId :
 BENQ3

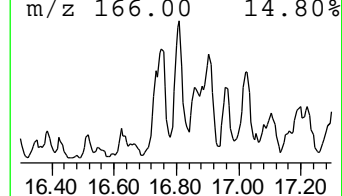
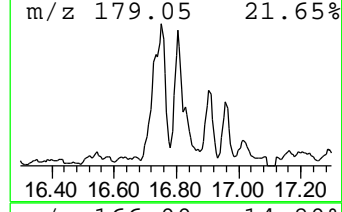
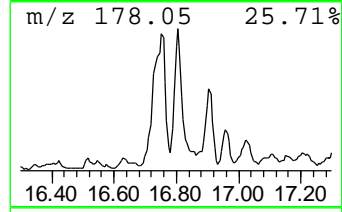
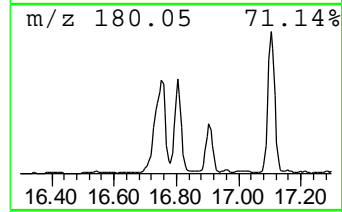
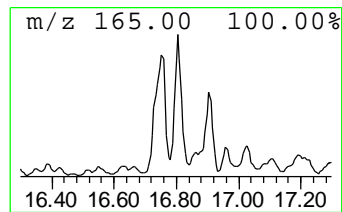
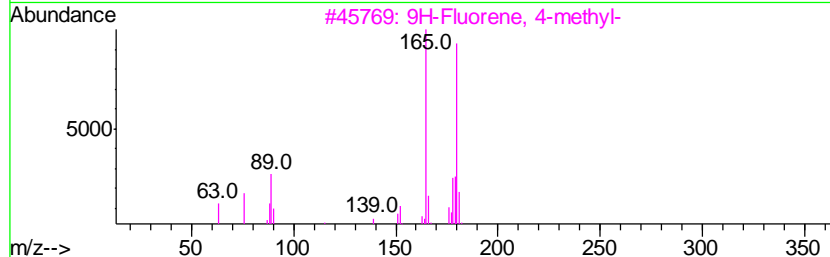
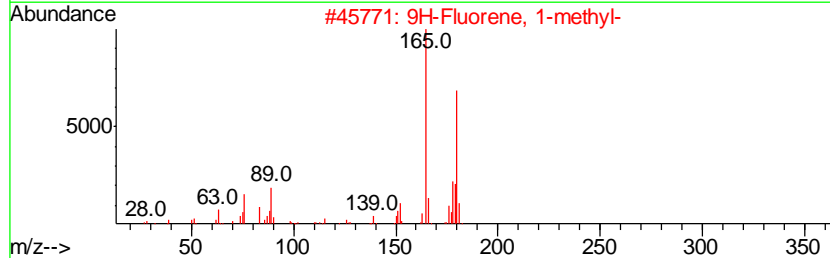
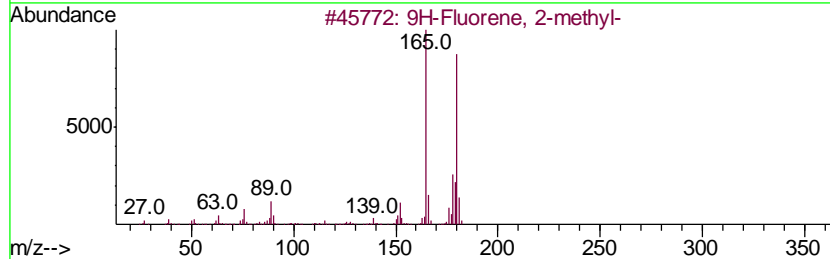
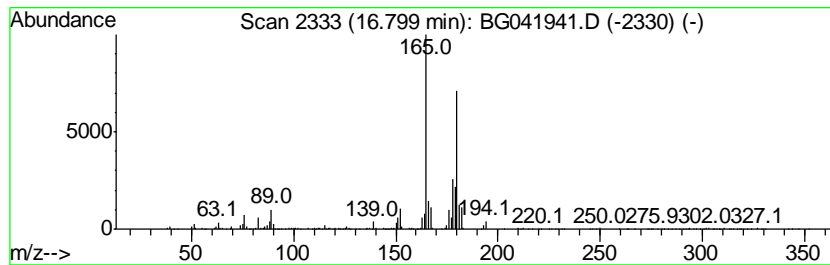
Quant Method : Z:\SVOASRV\HPCHEM1\BNA_G\METHODS\SOM-EPA-BG080319MA.M
 Quant Title : SVOA CALIBRATION

TIC Library : C:\DATABASE\NIST11.L
 TIC Integration Parameters: LSCINT.P

 Peak Number 16 9H-Fluorene, 2-methyl- Concentration Rank 23

R.T.	EstConc	Area	Relative to ISTD	R.T.
16.80	9.90 ng/ul	548279	Phenanthrene-d10	17.46

Hit#	of	Tentative ID	MW	MolForm	CAS#	Qual
1	5	9H-Fluorene, 2-methyl-	180	C14H12	001430-97-3	89
2		9H-Fluorene, 1-methyl-	180	C14H12	001730-37-6	89
3		9H-Fluorene, 4-methyl-	180	C14H12	001556-99-6	89
4		9H-Fluorene, 3-methyl-	180	C14H12	002523-39-9	76
5		9H-Fluorene, 2-methyl-	180	C14H12	001430-97-3	76



Data Path : Z:\SVOASRV\HPCHEM1\BNA G\DATA\BG080319\
 Data File : BG041941.D
 Acq On : 4 Aug 2019 13:46
 Operator : HP/JU
 Sample : K3850-09
 Misc :
 ALS Vial : 42 Sample Multiplier: 1

Instrument :
 BNA_G
 ClientSampleId :
 BENQ3

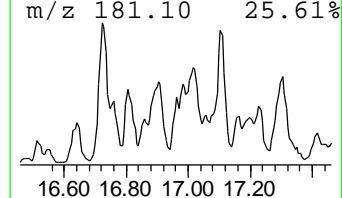
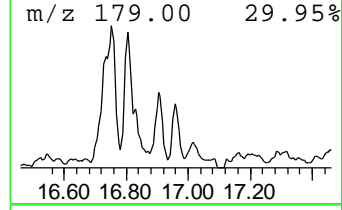
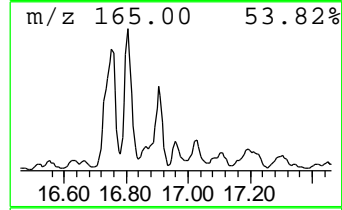
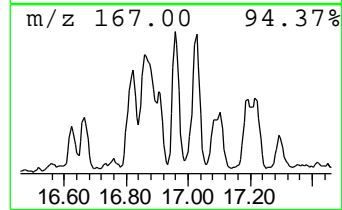
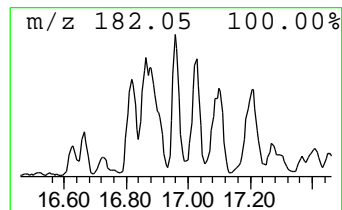
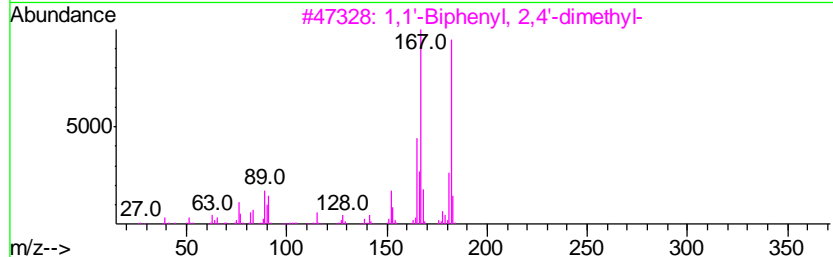
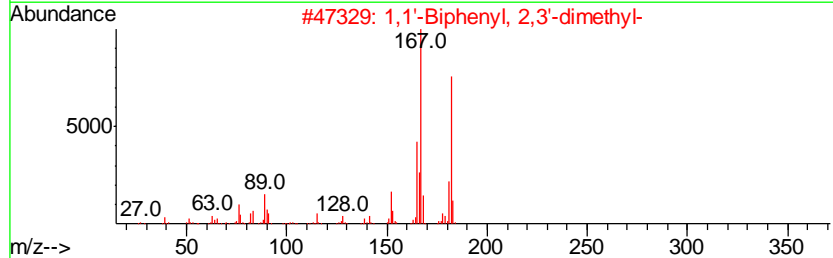
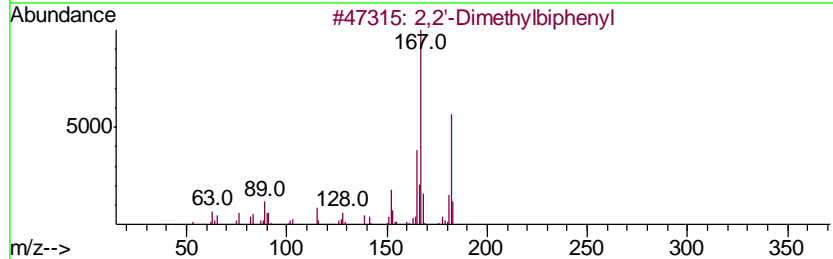
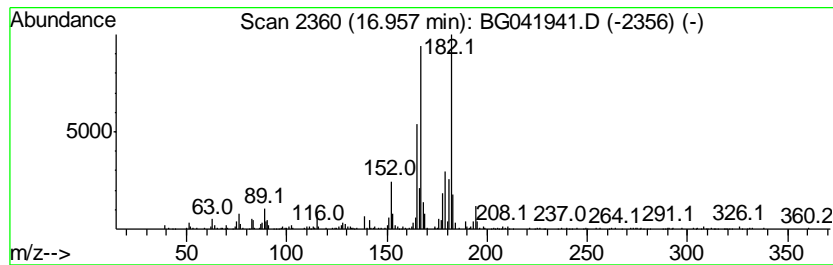
Quant Method : Z:\SVOASRV\HPCHEM1\BNA_G\METHODS\SOM-EPA-BG080319MA.M
 Quant Title : SVOA CALIBRATION

TIC Library : C:\DATABASE\NIST11.L
 TIC Integration Parameters: LSCINT.P

 Peak Number 18 2,2'-Dimethylbiphenyl Concentration Rank 30

R.T.	EstConc	Area	Relative to ISTD	R.T.
16.96	7.77 ng/ul	430199	Phenanthrene-d10	17.46

Hit#	of	Tentative ID	MW	MolForm	CAS#	Qual
1	5	2,2'-Dimethylbiphenyl	182	C14H14	000605-39-0	94
2		1,1'-Biphenyl, 2,3'-dimethyl-	182	C14H14	000611-43-8	93
3		1,1'-Biphenyl, 2,4'-dimethyl-	182	C14H14	000611-61-0	90
4		1,1'-Biphenyl, 2-ethyl-	182	C14H14	001812-51-7	90
5		2,2'-Dimethylbiphenyl	182	C14H14	000605-39-0	90



Data Path : Z:\SVOASRV\HPCHEM1\BNA G\DATA\BG080319\
 Data File : BG041941.D
 Acq On : 4 Aug 2019 13:46
 Operator : HP/JU
 Sample : K3850-09
 Misc :
 ALS Vial : 42 Sample Multiplier: 1

Instrument :
 BNA_G
 ClientSampleID :
 BENQ3

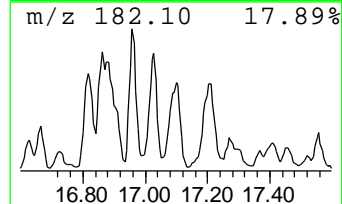
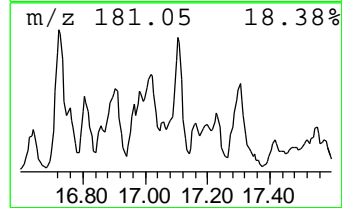
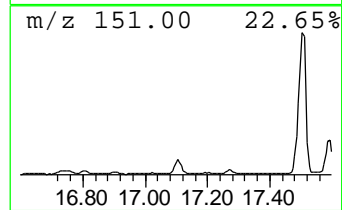
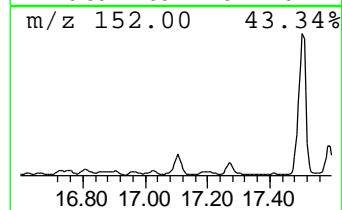
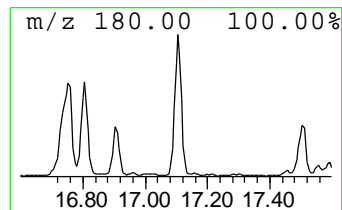
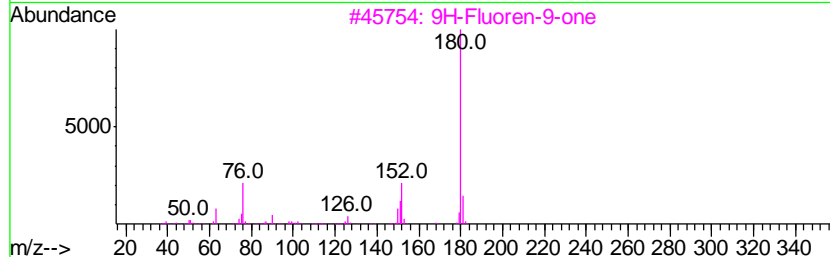
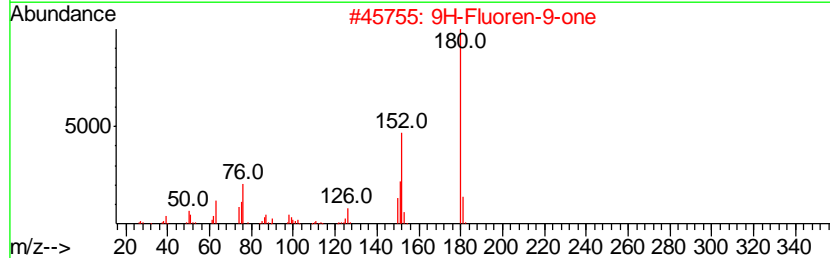
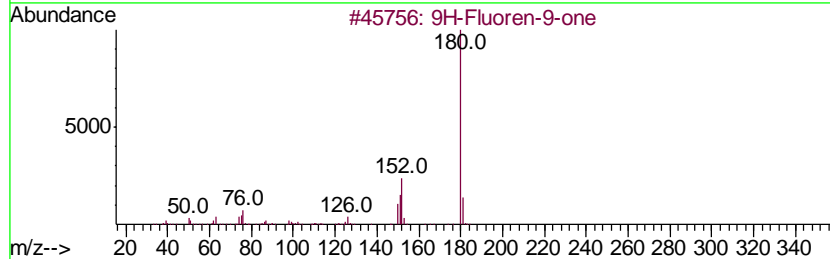
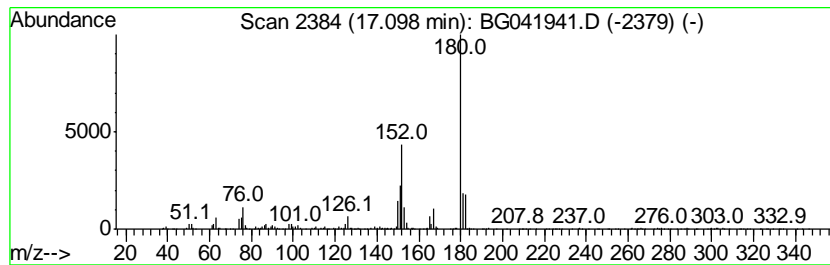
Quant Method : Z:\SVOASRV\HPCHEM1\BNA_G\METHODS\SOM-EPA-BG080319MA.M
 Quant Title : SVOA CALIBRATION

TIC Library : C:\DATABASE\NIST11.L
 TIC Integration Parameters: LSCINT.P

 Peak Number 19 9H-Fluoren-9-one Concentration Rank 22

R.T.	EstConc	Area	Relative to ISTD	R.T.
17.10	10.22 ng/ul	565979	Phenanthrene-d10	17.46

Hit#	of	Tentative ID	MW	MolForm	CAS#	Qual
1	5	9H-Fluoren-9-one	180	C13H8O	000486-25-9	94
2		9H-Fluoren-9-one	180	C13H8O	000486-25-9	87
3		9H-Fluoren-9-one	180	C13H8O	000486-25-9	81
4		9H-Fluoren-9-one	180	C13H8O	000486-25-9	81
5		Benzo[h]cinnoline	180	C12H8N2	000230-31-9	74



Data Path : Z:\SVOASRV\HPCHEM1\BNA G\DATA\BG080319\
 Data File : BG041941.D
 Acq On : 4 Aug 2019 13:46
 Operator : HP/JU
 Sample : K3850-09
 Misc :
 ALS Vial : 42 Sample Multiplier: 1

Instrument :
 BNA_G
 ClientSampleID :
 BENQ3

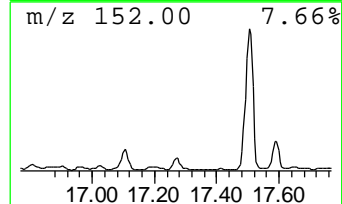
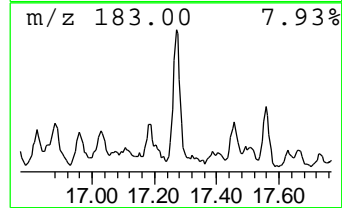
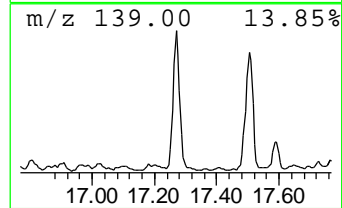
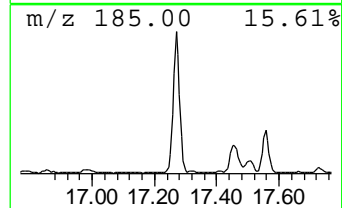
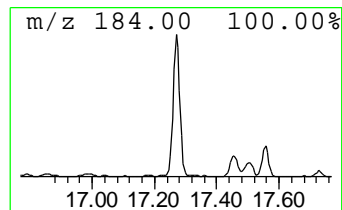
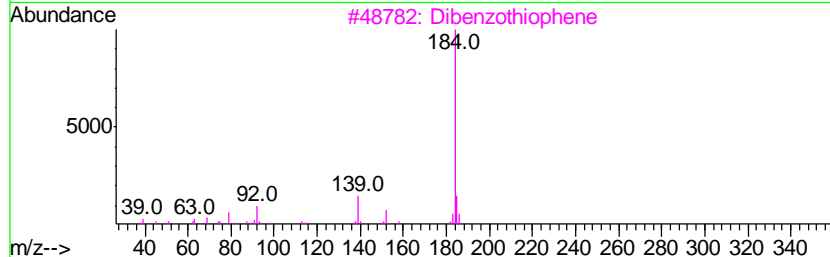
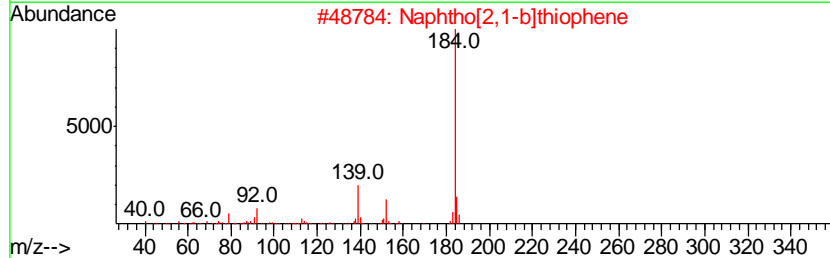
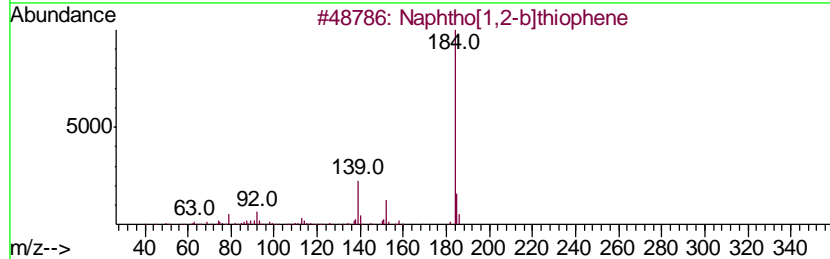
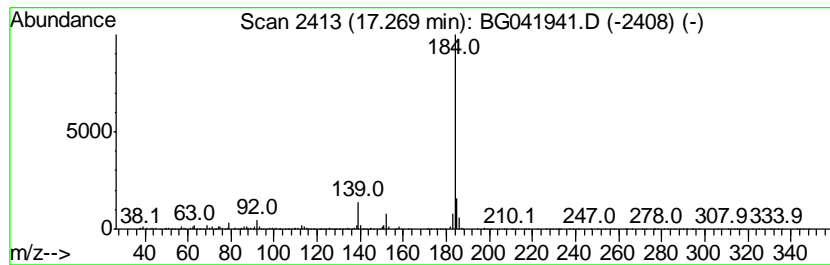
Quant Method : Z:\SVOASRV\HPCHEM1\BNA_G\METHODS\SOM-EPA-BG080319MA.M
 Quant Title : SVOA CALIBRATION

TIC Library : C:\DATABASE\NIST11.L
 TIC Integration Parameters: LSCINT.P

 Peak Number 20 Naphtho[1,2-b]thiophene Concentration Rank 13

R.T.	EstConc	Area	Relative to ISTD	R.T.
17.27	19.27 ng/ul	1066810	Phenanthrene-d10	17.46

Hit#	of	Tentative ID	MW	MolForm	CAS#	Qual
1	5	Naphtho[1,2-b]thiophene	184	C12H8S	000234-41-3	95
2		Naphtho[2,1-b]thiophene	184	C12H8S	000233-02-3	95
3		Dibenzothiophene	184	C12H8S	000132-65-0	95
4		Naphtho[2,3-b]thiophene	184	C12H8S	000268-77-9	95
5		Dibenzothiophene	184	C12H8S	000132-65-0	94



Data Path : Z:\SVOASRV\HPCHEM1\BNA G\DATA\BG080319\
 Data File : BG041941.D
 Acq On : 4 Aug 2019 13:46
 Operator : HP/JU
 Sample : K3850-09
 Misc :
 ALS Vial : 42 Sample Multiplier: 1

Instrument :
 BNA_G
 ClientSampleId :
 BENQ3

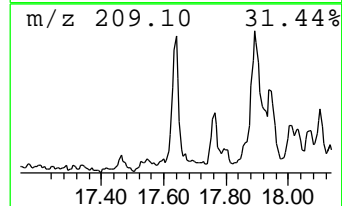
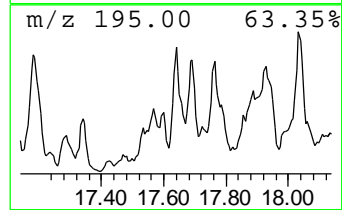
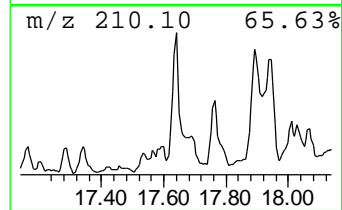
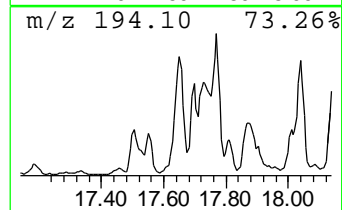
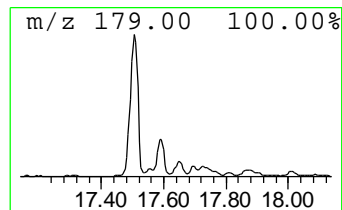
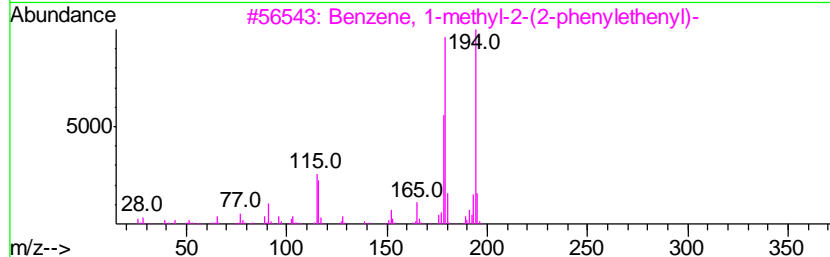
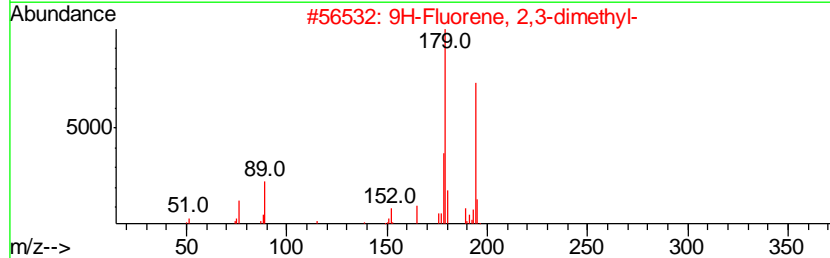
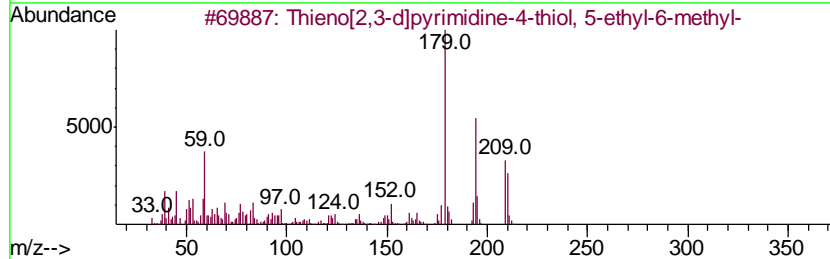
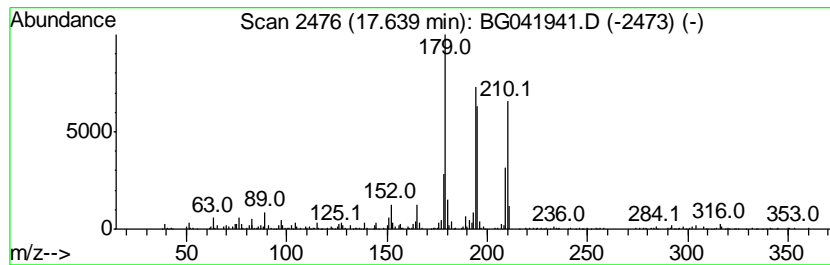
Quant Method : Z:\SVOASRV\HPCHEM1\BNA_G\METHODS\SOM-EPA-BG080319MA.M
 Quant Title : SVOA CALIBRATION

TIC Library : C:\DATABASE\NIST11.L
 TIC Integration Parameters: LSCINT.P

 Peak Number 21 Thieno[2,3-d]pyrimidine-4-t... Concentration Rank 33

R.T.	EstConc	Area	Relative to ISTD	R.T.
17.64	7.06 ng/ul	391128	Phenanthrene-d10	17.46

Hit#	of	Tentative ID	MW	MolForm	CAS#	Qual
1	5	Thieno[2,3-d]pyrimidine-4-thiol,...	210	C9H10N2S2	1000303-48-8	81
2		9H-Fluorene, 2,3-dimethyl-	194	C15H14	004612-63-9	60
3		Benzene, 1-methyl-2-(2-phenyleth...	194	C15H14	074685-42-0	53
4		2,5-Dimethylphenol, trimethylsil...	194	C11H18OSi	1000373-16-3	52
5		Benzoic acid, 4-hydroxy-2-methox...	210	C11H14O4	034874-75-4	46



Data Path : Z:\SVOASRV\HPCHEM1\BNA G\DATA\BG080319\
 Data File : BG041941.D
 Acq On : 4 Aug 2019 13:46
 Operator : HP/JU
 Sample : K3850-09
 Misc :
 ALS Vial : 42 Sample Multiplier: 1

Instrument :
 BNA_G
 ClientSampleID :
 BENQ3

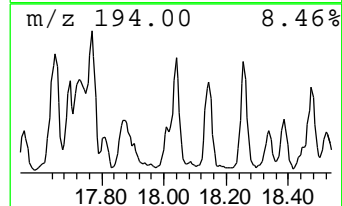
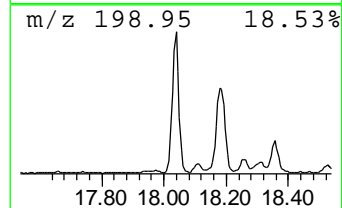
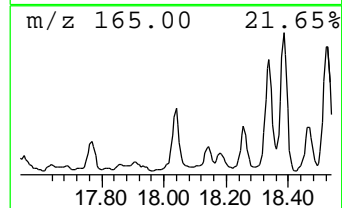
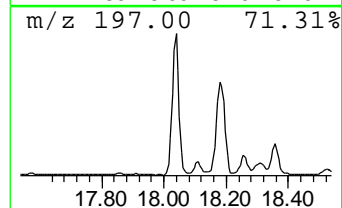
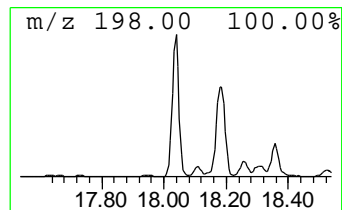
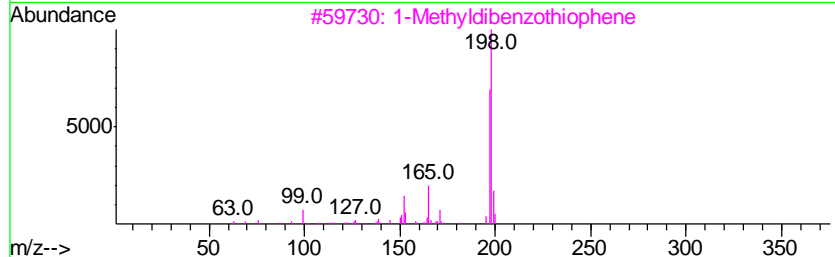
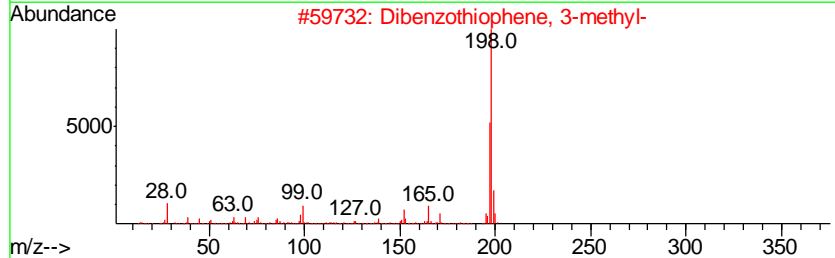
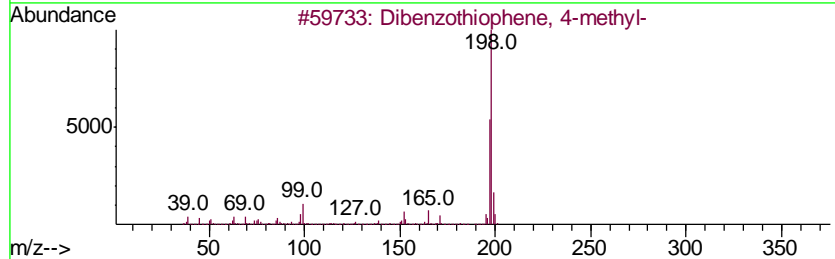
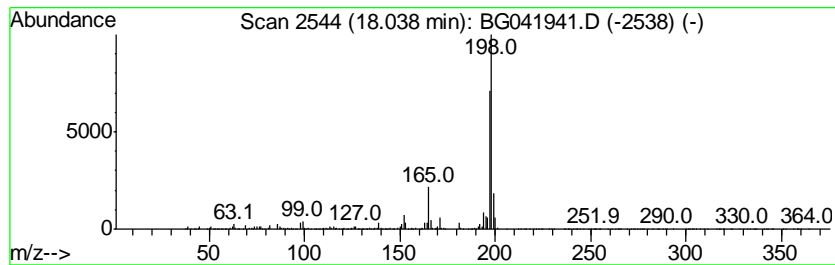
Quant Method : Z:\SVOASRV\HPCHEM1\BNA_G\METHODS\SOM-EPA-BG080319MA.M
 Quant Title : SVOA CALIBRATION

TIC Library : C:\DATABASE\NIST11.L
 TIC Integration Parameters: LSCINT.P

 Peak Number 22 Dibenzothiophene, 4-methyl- Concentration Rank 11

R.T.	EstConc	Area	Relative to ISTD	R.T.
18.04	22.72 ng/ul	1258260	Phenanthrene-d10	17.46

Hit#	of	Tentative ID	MW	MolForm	CAS#	Qual
1	5	Dibenzothiophene, 4-methyl-	198	C13H10S	007372-88-5	91
2		Dibenzothiophene, 3-methyl-	198	C13H10S	016587-52-3	91
3		1-Methyldibenzothiophene	198	C13H10S	031317-07-4	87
4		Benzene, 1,1'-(1-fluoro-1,2-ethe...	198	C14H11F	000671-19-2	64
5		Tacrine	198	C13H14N2	000321-64-2	59



Data Path : Z:\SVOASRV\HPCHEM1\BNA G\DATA\BG080319\
 Data File : BG041941.D
 Acq On : 4 Aug 2019 13:46
 Operator : HP/JU
 Sample : K3850-09
 Misc :
 ALS Vial : 42 Sample Multiplier: 1

Instrument :
 BNA_G
 ClientSampleId :
 BENQ3

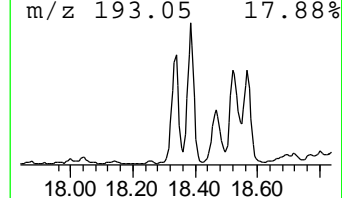
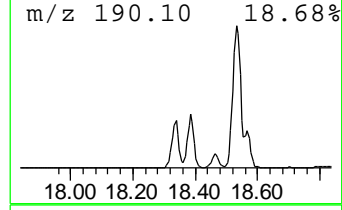
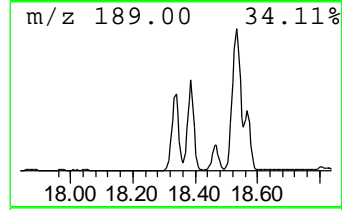
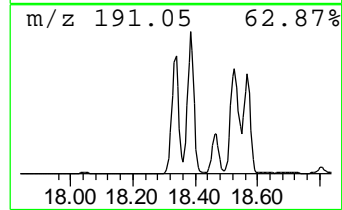
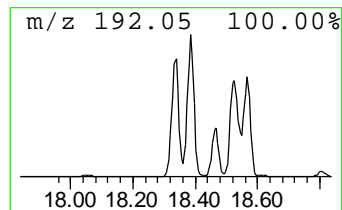
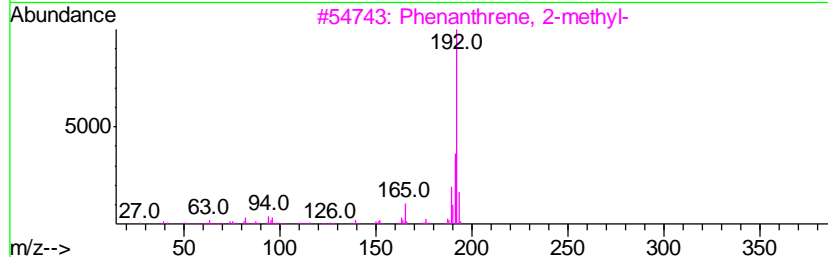
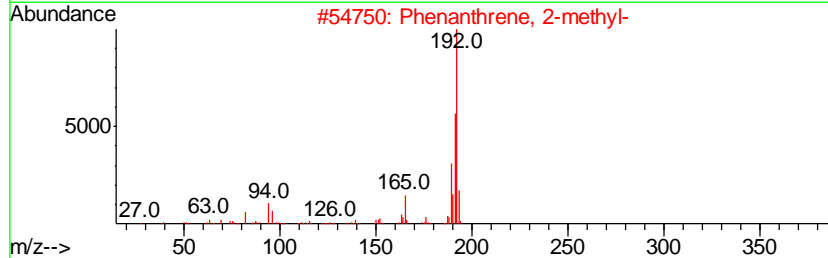
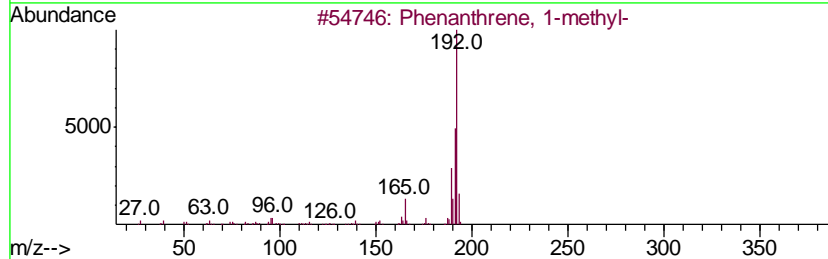
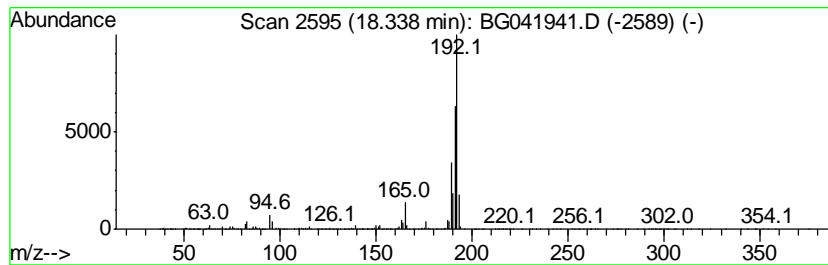
Quant Method : Z:\SVOASRV\HPCHEM1\BNA_G\METHODS\SOM-EPA-BG080319MA.M
 Quant Title : SVOA CALIBRATION

TIC Library : C:\DATABASE\NIST11.L
 TIC Integration Parameters: LSCINT.P

 Peak Number 24 Phenanthrene, 1-methyl- Concentration Rank 3

R.T.	EstConc	Area	Relative to ISTD	R.T.
18.34	68.90 ng/ul	3815510	Phenanthrene-d10	17.46

Hit#	of	Tentative ID	MW	MolForm	CAS#	Qual
1	5	Phenanthrene, 1-methyl-	192	C15H12	000832-69-9	96
2		Phenanthrene, 2-methyl-	192	C15H12	002531-84-2	95
3		Phenanthrene, 2-methyl-	192	C15H12	002531-84-2	95
4		Anthracene, 9-methyl-	192	C15H12	000779-02-2	93
5		Anthracene, 2-methyl-	192	C15H12	000613-12-7	93



Data Path : Z:\SVOASRV\HPCHEM1\BNA G\DATA\BG080319\
 Data File : BG041941.D
 Acq On : 4 Aug 2019 13:46
 Operator : HP/JU
 Sample : K3850-09
 Misc :
 ALS Vial : 42 Sample Multiplier: 1

Instrument :
 BNA_G
 ClientSampleId :
 BENQ3

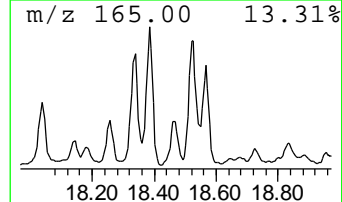
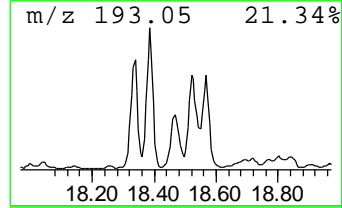
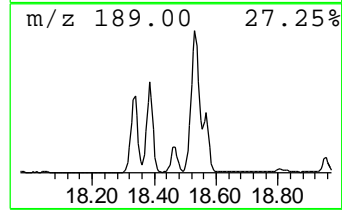
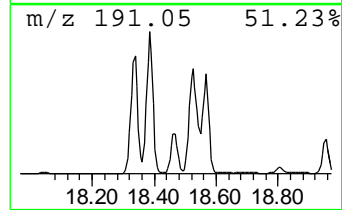
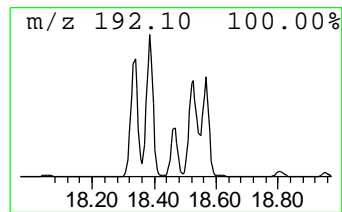
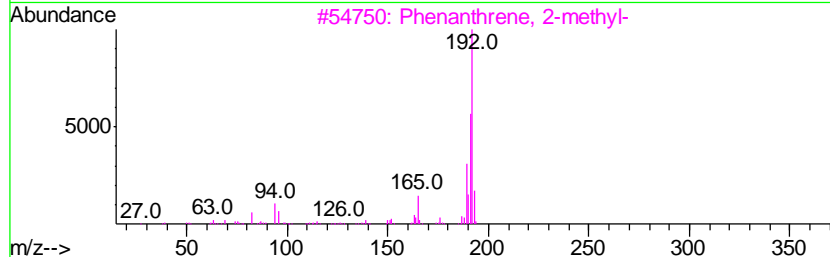
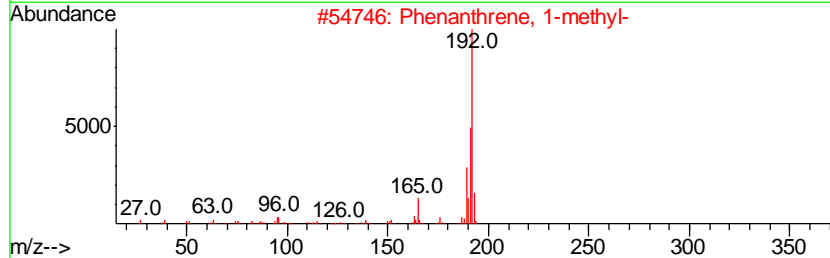
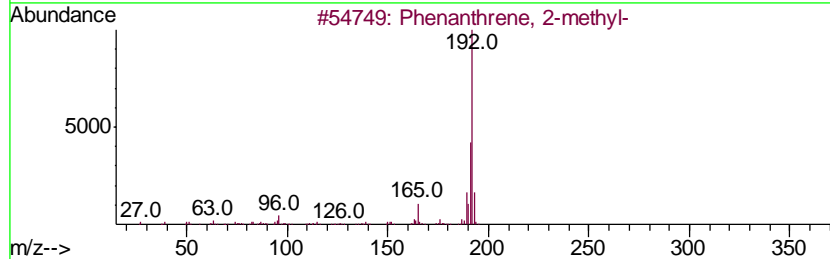
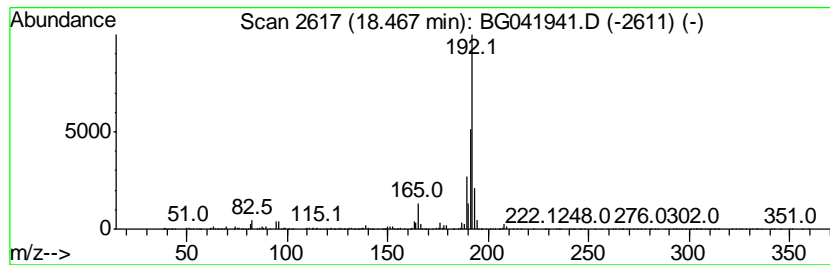
Quant Method : Z:\SVOASRV\HPCHEM1\BNA_G\METHODS\SOM-EPA-BG080319MA.M
 Quant Title : SVOA CALIBRATION

TIC Library : C:\DATABASE\NIST11.L
 TIC Integration Parameters: LSCINT.P

 Peak Number 26 Phenanthrene, 2-methyl- Concentration Rank 10

R.T.	EstConc	Area	Relative to ISTD	R.T.
18.47	25.08 ng/ul	1388820	Phenanthrene-d10	17.46

Hit#	of	Tentative ID	MW	MolForm	CAS#	Qual
1	5	Phenanthrene, 2-methyl-	192	C15H12	002531-84-2	96
2		Phenanthrene, 1-methyl-	192	C15H12	000832-69-9	96
3		Phenanthrene, 2-methyl-	192	C15H12	002531-84-2	95
4		1H-Cyclopropa[1]phenanthrene, 1a, ...	192	C15H12	000949-41-7	95
5		Anthracene, 9-methyl-	192	C15H12	000779-02-2	93



Data Path : Z:\SVOASRV\HPCHEM1\BNA G\DATA\BG080319\
 Data File : BG041941.D
 Acq On : 4 Aug 2019 13:46
 Operator : HP/JU
 Sample : K3850-09
 Misc :
 ALS Vial : 42 Sample Multiplier: 1

Instrument :
 BNA_G
 ClientSampleID :
 BENQ3

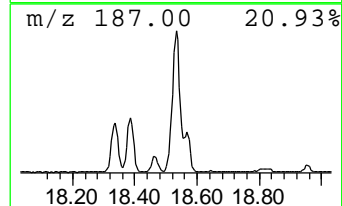
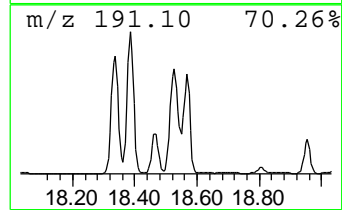
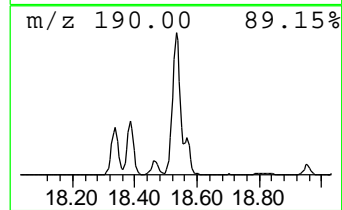
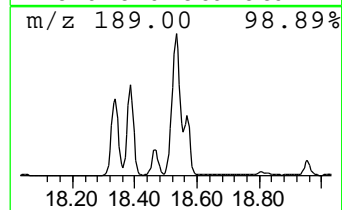
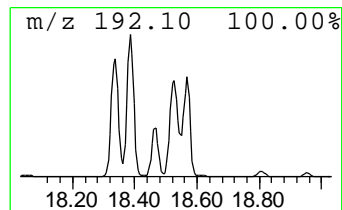
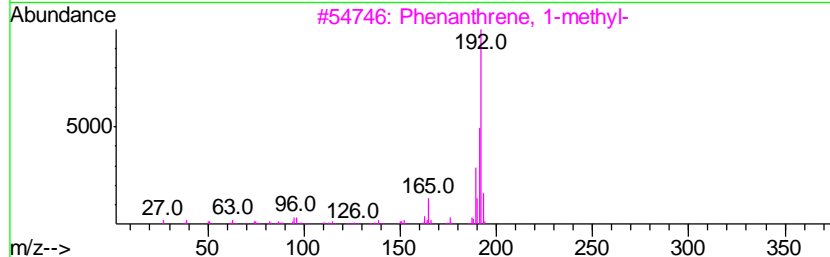
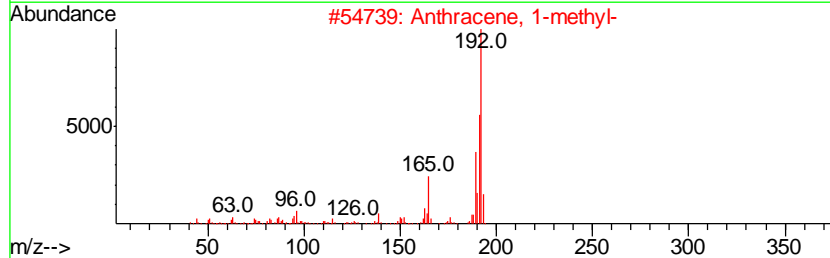
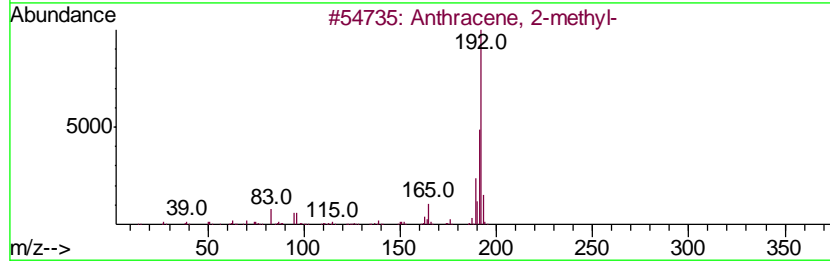
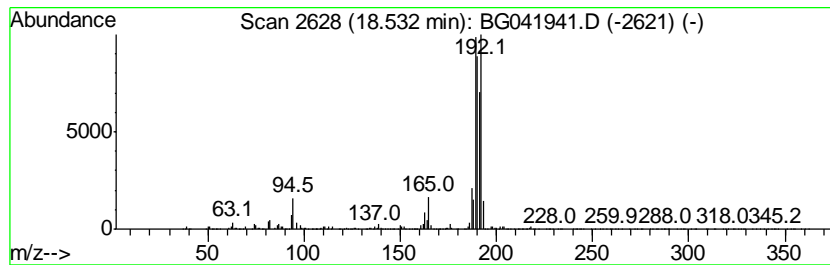
Quant Method : Z:\SVOASRV\HPCHEM1\BNA_G\METHODS\SOM-EPA-BG080319MA.M
 Quant Title : SVOA CALIBRATION

TIC Library : C:\DATABASE\NIST11.L
 TIC Integration Parameters: LSCINT.P

 Peak Number 27 Anthracene, 2-methyl- Concentration Rank 1

R.T.	EstConc	Area	Relative to ISTD	R.T.
18.53	90.36 ng/ul	5003880	Phenanthrene-d10	17.46

Hit#	of	Tentative ID	MW	MolForm	CAS#	Qual
1	5	Anthracene, 2-methyl-	192	C15H12	000613-12-7	60
2		Anthracene, 1-methyl-	192	C15H12	000610-48-0	55
3		Phenanthrene, 1-methyl-	192	C15H12	000832-69-9	53
4		1H-Cyclopropa[1]phenanthrene, 1a, ...	192	C15H12	000949-41-7	53
5		Naphtho[2,3-b]norbornadiene	192	C15H12	107426-38-0	53



Data Path : Z:\SVOASRV\HPCHEM1\BNA G\DATA\BG080319\
 Data File : BG041941.D
 Acq On : 4 Aug 2019 13:46
 Operator : HP/JU
 Sample : K3850-09
 Misc :
 ALS Vial : 42 Sample Multiplier: 1

Instrument :
 BNA_G
 ClientSampleID :
 BENQ3

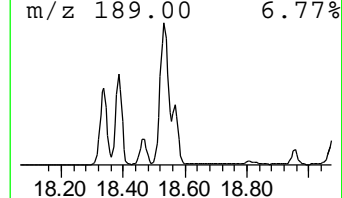
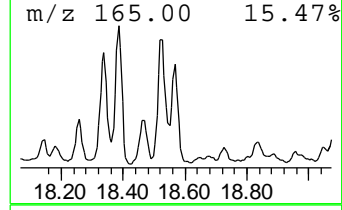
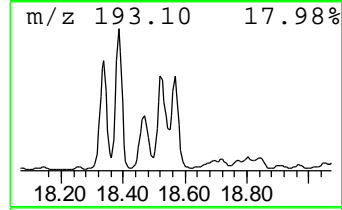
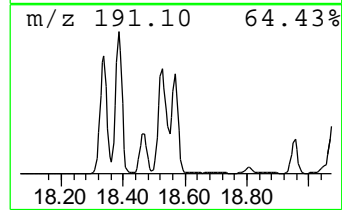
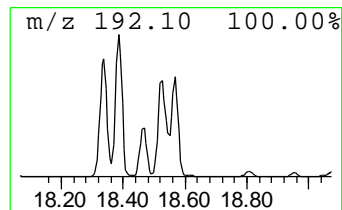
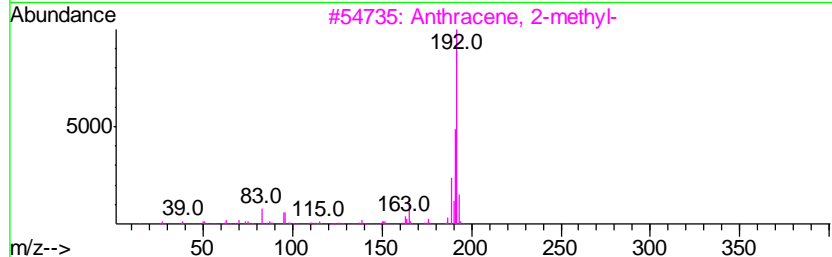
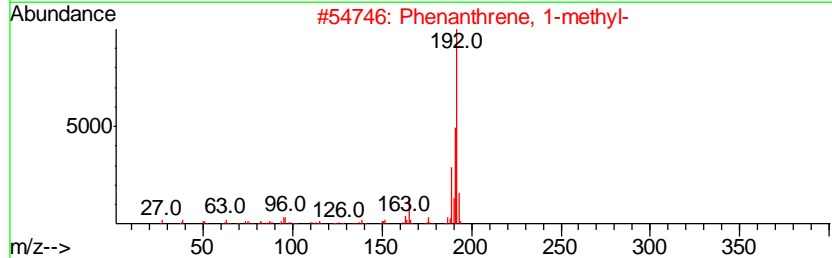
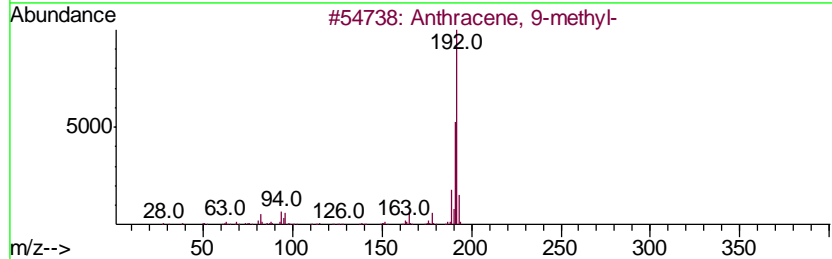
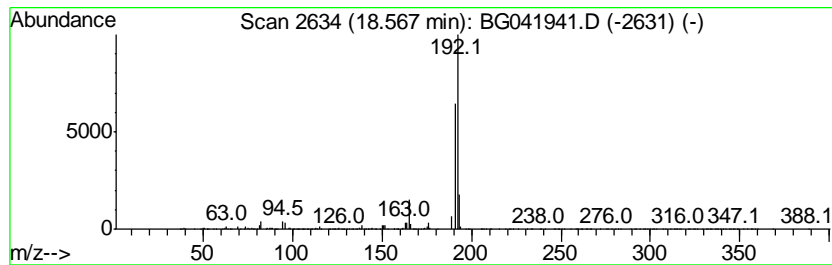
Quant Method : Z:\SVOASRV\HPCHEM1\BNA_G\METHODS\SOM-EPA-BG080319MA.M
 Quant Title : SVOA CALIBRATION

TIC Library : C:\DATABASE\NIST11.L
 TIC Integration Parameters: LSCINT.P

 Peak Number 28 Anthracene, 9-methyl- Concentration Rank 5

R.T.	EstConc	Area	Relative to ISTD	R.T.
18.57	45.67 ng/ul	2529000	Phenanthrene-d10	17.46

Hit#	of	Tentative ID	MW	MolForm	CAS#	Qual
1	5	Anthracene, 9-methyl-	192	C15H12	000779-02-2	91
2		Phenanthrene, 1-methyl-	192	C15H12	000832-69-9	90
3		Anthracene, 2-methyl-	192	C15H12	000613-12-7	90
4		Anthracene, 1-methyl-	192	C15H12	000610-48-0	90
5		Anthracene, 1-methyl-	192	C15H12	000610-48-0	90



Data Path : Z:\SVOASRV\HPCHEM1\BNA G\DATA\BG080319\
 Data File : BG041941.D
 Acq On : 4 Aug 2019 13:46
 Operator : HP/JU
 Sample : K3850-09
 Misc :
 ALS Vial : 42 Sample Multiplier: 1

Instrument :
 BNA_G
 ClientSampled :
 BENQ3

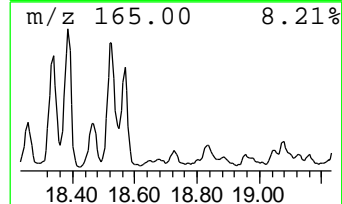
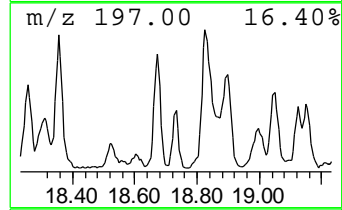
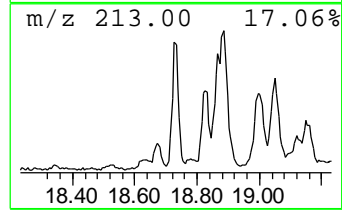
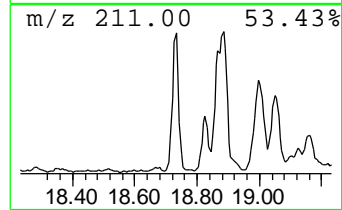
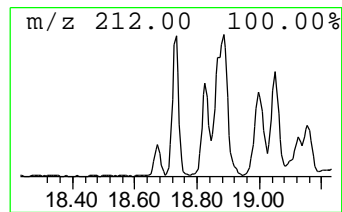
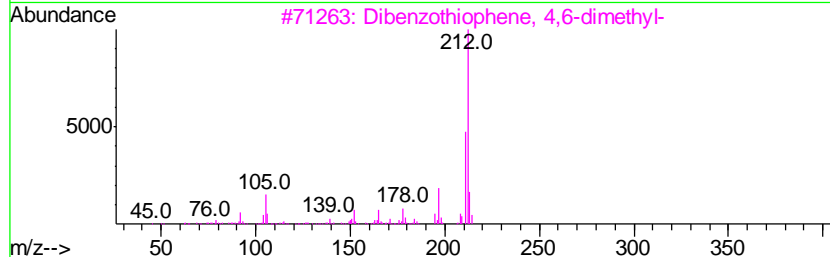
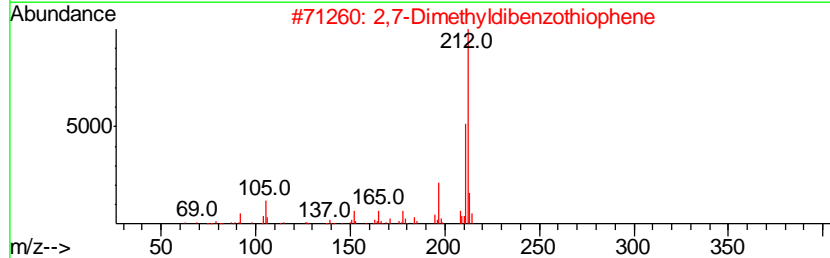
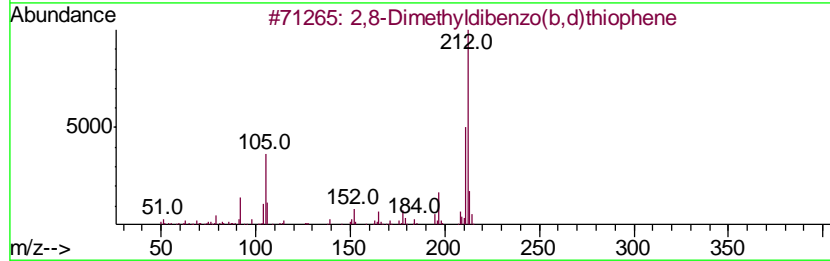
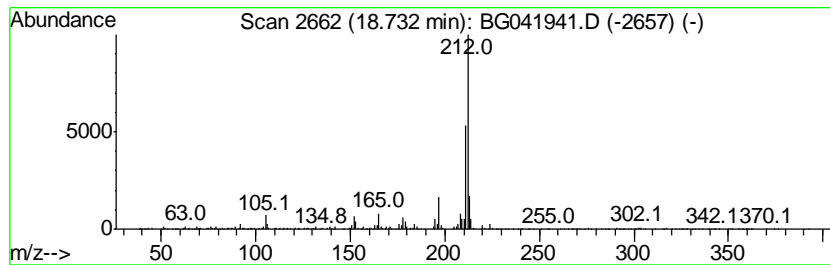
Quant Method : Z:\SVOASRV\HPCHEM1\BNA_G\METHODS\SOM-EPA-BG080319MA.M
 Quant Title : SVOA CALIBRATION

TIC Library : C:\DATABASE\NIST11.L
 TIC Integration Parameters: LSCINT.P

 Peak Number 29 2,8-Dimethyldibenzo(b,d)thi... Concentration Rank 25

R.T.	EstConc	Area	Relative to ISTD	R.T.
18.73	8.87 ng/ul	491019	Phenanthrene-d10	17.46

Hit#	of	Tentative ID	MW	MolForm	CAS#	Qual
1	5	2,8-Dimethyldibenzo(b,d)thiophene	212	C14H12S	001207-15-4	94
2		2,7-Dimethyldibenzothiophene	212	C14H12S	031317-19-8	93
3		Dibenzothiophene, 4,6-dimethyl-	212	C14H12S	001207-12-1	93
4		2,6-Dimethyldibenzothiophene	212	C14H12S	089816-75-1	93
5		1,7-Dimethyldibenzothiophene	212	C14H12S	089816-53-5	89



Data Path : Z:\SVOASRV\HPCHEM1\BNA G\DATA\BG080319\
 Data File : BG041941.D
 Acq On : 4 Aug 2019 13:46
 Operator : HP/JU
 Sample : K3850-09
 Misc :
 ALS Vial : 42 Sample Multiplier: 1

Instrument :
 BNA_G
 ClientSampleId :
 BENQ3

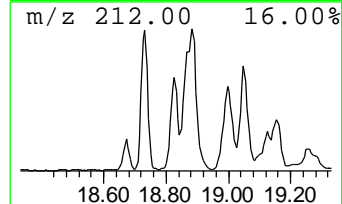
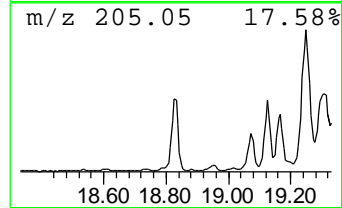
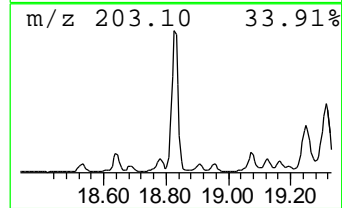
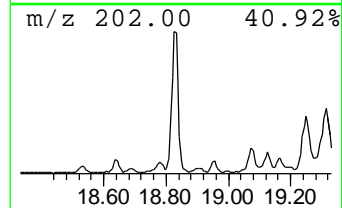
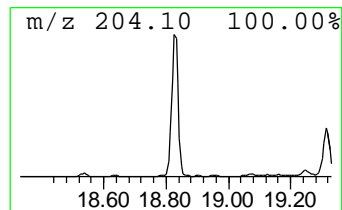
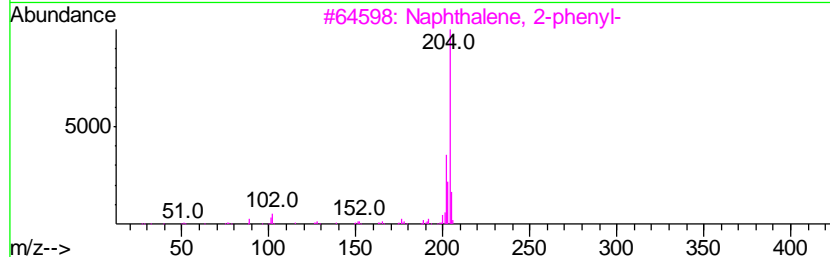
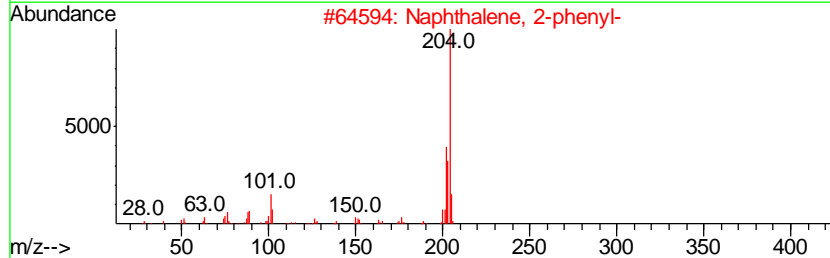
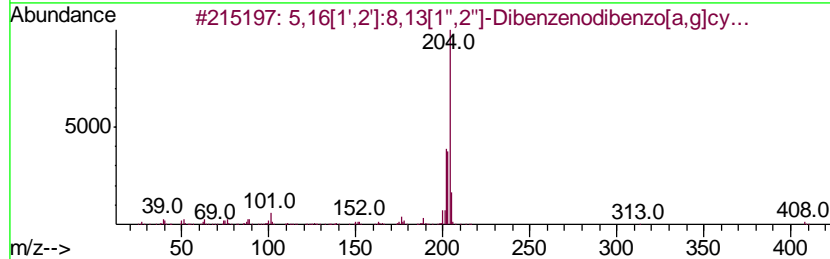
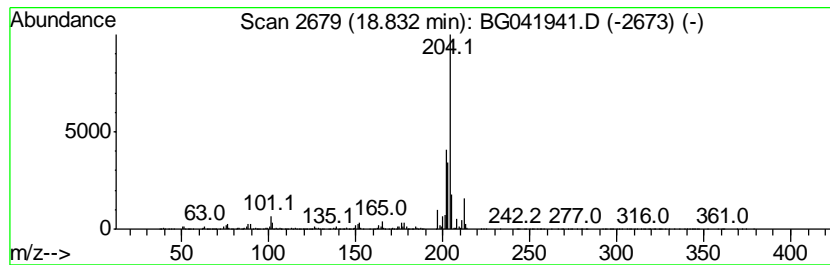
Quant Method : Z:\SVOASRV\HPCHEM1\BNA_G\METHODS\SOM-EPA-BG080319MA.M
 Quant Title : SVOA CALIBRATION

TIC Library : C:\DATABASE\NIST11.L
 TIC Integration Parameters: LSCINT.P

 Peak Number 30 5,16[1',2']:8,13[1'',2'']-D... Concentration Rank 9

R.T.	EstConc	Area	Relative to ISTD	R.T.
18.83	30.16 ng/ul	1670120	Phenanthrene-d10	17.46

Hit#	of	Tentative ID	MW	MolForm	CAS#	Qual
1	5	5,16[1',2']:8,13[1'',2'']-Dibenz...	408	C32H24	005672-97-9	83
2		Naphthalene, 2-phenyl-	204	C16H12	000612-94-2	60
3		Naphthalene, 2-phenyl-	204	C16H12	000612-94-2	60
4		Naphthalene, 2-phenyl-	204	C16H12	000612-94-2	60
5		Naphthalene, 2-phenyl-	204	C16H12	000612-94-2	60



Data Path : Z:\SVOASRV\HPCHEM1\BNA G\DATA\BG080319\
 Data File : BG041941.D
 Acq On : 4 Aug 2019 13:46
 Operator : HP/JU
 Sample : K3850-09
 Misc :
 ALS Vial : 42 Sample Multiplier: 1

Instrument :
 BNA_G
 ClientSampleId :
 BENQ3

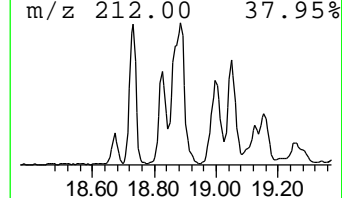
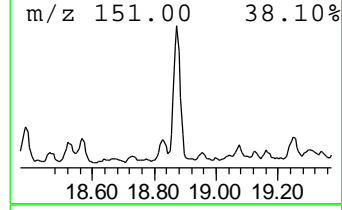
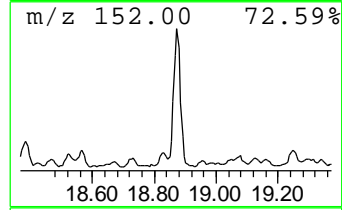
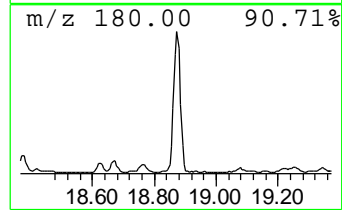
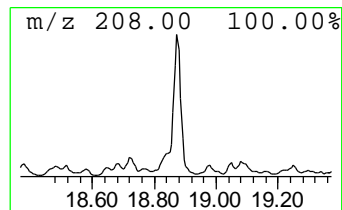
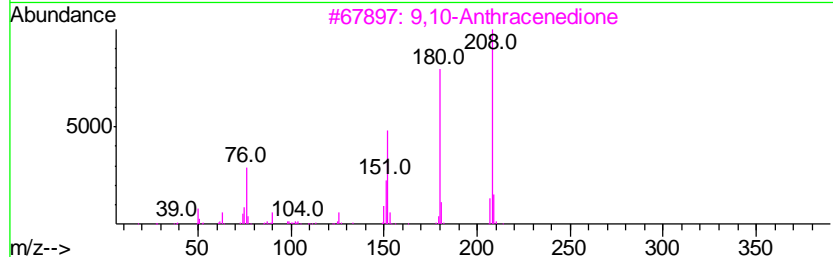
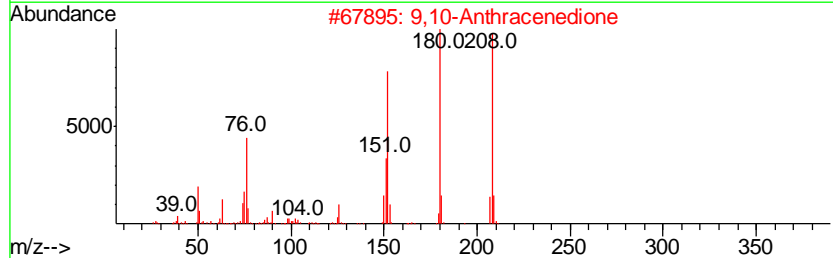
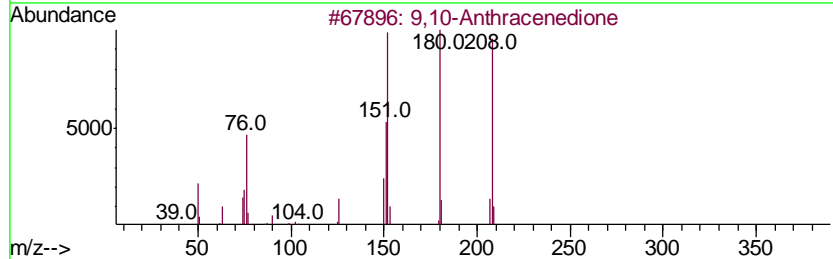
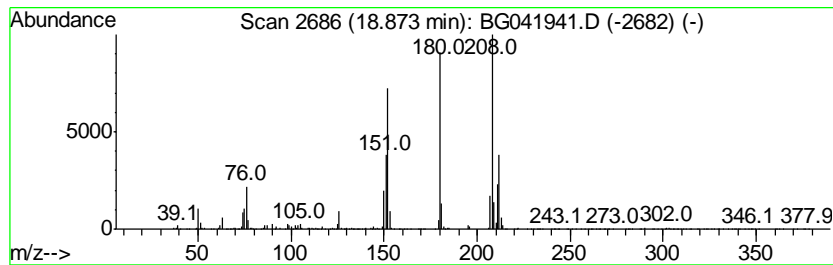
Quant Method : Z:\SVOASRV\HPCHEM1\BNA_G\METHODS\SOM-EPA-BG080319MA.M
 Quant Title : SVOA CALIBRATION

TIC Library : C:\DATABASE\NIST11.L
 TIC Integration Parameters: LSCINT.P

 Peak Number 31 9,10-Anthracenedione Concentration Rank 7

R.T.	EstConc	Area	Relative to ISTD	R.T.
18.87	33.21 ng/ul	1839050	Phenanthrene-d10	17.46

Hit#	of	Tentative ID	MW	MolForm	CAS#	Qual
1	5	9,10-Anthracenedione	208	C14H8O2	000084-65-1	98
2		9,10-Anthracenedione	208	C14H8O2	000084-65-1	91
3		9,10-Anthracenedione	208	C14H8O2	000084-65-1	91
4		Benzo[c]cinnoline	180	C12H8N2	000230-17-1	60
5		Benzo[c]cinnoline	180	C12H8N2	000230-17-1	55



Data Path : Z:\SVOASRV\HPCHEM1\BNA G\DATA\BG080319\
 Data File : BG041941.D
 Acq On : 4 Aug 2019 13:46
 Operator : HP/JU
 Sample : K3850-09
 Misc :
 ALS Vial : 42 Sample Multiplier: 1

Instrument :
 BNA_G
 ClientSampleId :
 BENQ3

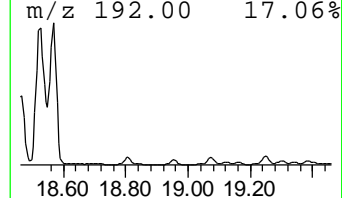
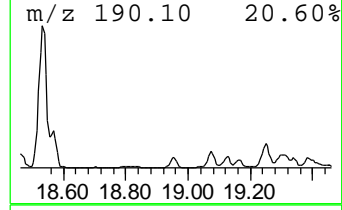
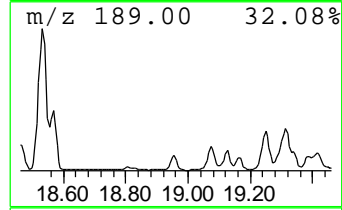
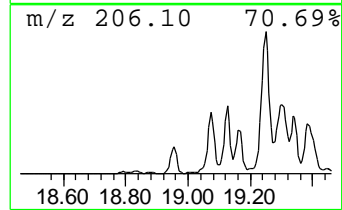
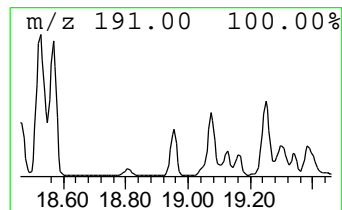
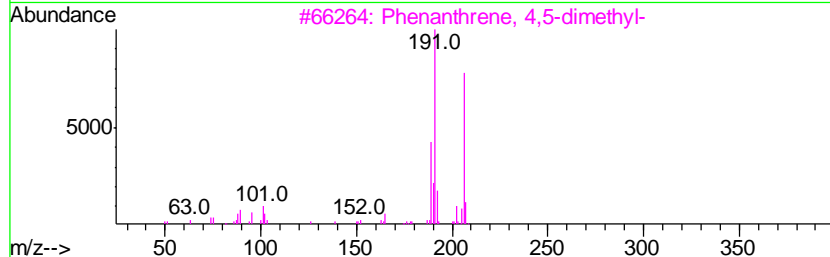
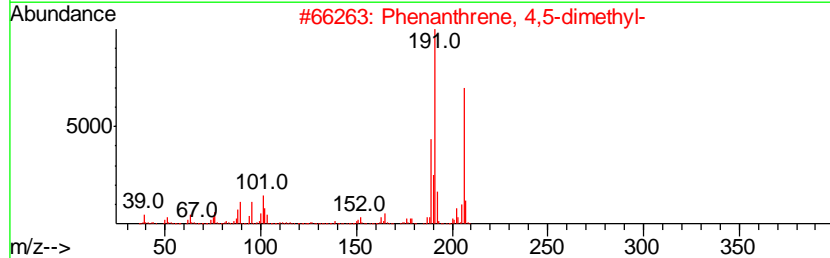
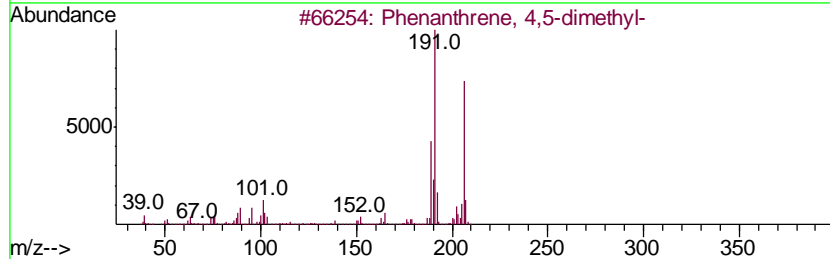
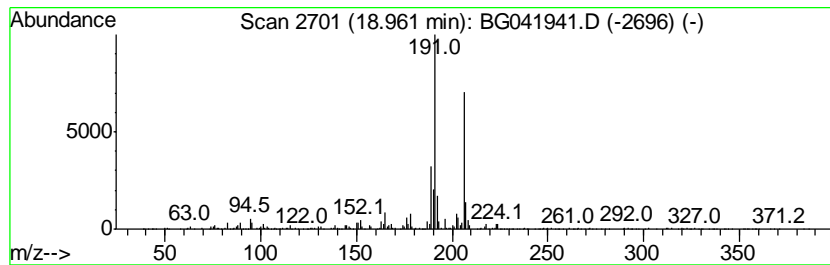
Quant Method : Z:\SVOASRV\HPCHEM1\BNA_G\METHODS\SOM-EPA-BG080319MA.M
 Quant Title : SVOA CALIBRATION

TIC Library : C:\DATABASE\NIST11.L
 TIC Integration Parameters: LSCINT.P

 Peak Number 32 Phenanthrene, 4,5-dimethyl- Concentration Rank 19

R.T.	EstConc	Area	Relative to ISTD	R.T.
18.96	12.28 ng/ul	680253	Phenanthrene-d10	17.46

Hit#	of	Tentative ID	MW	MolForm	CAS#	Qual
1	5	Phenanthrene, 4,5-dimethyl-	206	C16H14	003674-69-9	94
2		Phenanthrene, 4,5-dimethyl-	206	C16H14	003674-69-9	93
3		Phenanthrene, 4,5-dimethyl-	206	C16H14	003674-69-9	93
4		Phenanthrene, 4,5-dimethyl-	206	C16H14	003674-69-9	93
5		Anthracene, 9-ethyl-	206	C16H14	000605-83-4	90



Data Path : Z:\SVOASRV\HPCHEM1\BNA_G\DATA\BG080319\
 Data File : BG041941.D
 Acq On : 4 Aug 2019 13:46
 Operator : HP/JU
 Sample : K3850-09
 Misc :
 ALS Vial : 42 Sample Multiplier: 1

Instrument :
 BNA_G
 ClientSampleId :
 BENQ3

Quant Method : Z:\SVOASRV\HPCHEM1\BNA_G\METHODS\SOM-EPA-BG080319MA.M
 Quant Title : SVOA CALIBRATION

TIC Library : C:\DATABASE\NIST11.L
 TIC Integration Parameters: LSCINT.P

TIC Top Hit name	RT	EstConc	Units	Response	--Internal Standard--		
					#	RT	Resp Conc
Butane, 2-methoxy...	3.16	19.7	ng/ul	529525	1	8.04	537704 20.0
Naphthalene, 1-me...	12.74	17.7	ng/ul	703893	2	10.86	796427 20.0
Naphthalene, 1-et...	13.73	8.3	ng/ul	552039	3	14.70	1336380 20.0
Naphthalene, 1,5-...	13.86	5.6	ng/ul	375435	3	14.70	1336380 20.0
Naphthalene, 2,7-...	14.02	12.3	ng/ul	822539	3	14.70	1336380 20.0
Naphthalene, 2,3-...	14.25	6.4	ng/ul	427765	3	14.70	1336380 20.0
Naphthalene, 1,4,...	15.17	5.0	ng/ul	333797	3	14.70	1336380 20.0
Naphthalene, 2,3,...	15.32	4.6	ng/ul	305909	3	14.70	1336380 20.0
Naphthalene, 1,6,...	15.49	5.6	ng/ul	374983	3	14.70	1336380 20.0
Benzene, [1-(2,4-...	15.88	5.1	ng/ul	339620	3	14.70	1336380 20.0
Benzeneethanol, ...	15.91	7.0	ng/ul	464518	3	14.70	1336380 20.0
unknown-01	16.42	8.3	ng/ul	460315	4	17.46	1107490 20.0
9H-Fluorene, 1-me...	16.73	7.2	ng/ul	396078	4	17.46	1107490 20.0
9H-Fluorene, 9-me...	16.76	8.8	ng/ul	485813	4	17.46	1107490 20.0
9H-Fluorene, 2-me...	16.80	9.9	ng/ul	548279	4	17.46	1107490 20.0
2,2'-Dimethylbiph...	16.96	7.8	ng/ul	430199	4	17.46	1107490 20.0
9H-Fluoren-9-one	17.10	10.2	ng/ul	565979	4	17.46	1107490 20.0
Naphtho[1,2-b]thi...	17.27	19.3	ng/ul	1066810	4	17.46	1107490 20.0
Thieno[2,3-d]pyri...	17.64	7.1	ng/ul	391128	4	17.46	1107490 20.0
Dibenzothiophene, ...	18.04	22.7	ng/ul	1258260	4	17.46	1107490 20.0
Phenanthrene, 1-m...	18.34	68.9	ng/ul	3815510	4	17.46	1107490 20.0
Phenanthrene, 2-m...	18.47	25.1	ng/ul	1388820	4	17.46	1107490 20.0
Anthracene, 2-met...	18.53	90.4	ng/ul	5003880	4	17.46	1107490 20.0
Anthracene, 9-met...	18.57	45.7	ng/ul	2529000	4	17.46	1107490 20.0
2,8-Dimethyldiben...	18.73	8.9	ng/ul	491019	4	17.46	1107490 20.0
5,16[1',2']:8,13[...	18.83	30.2	ng/ul	1670120	4	17.46	1107490 20.0
9,10-Anthracenedione	18.87	33.2	ng/ul	1839050	4	17.46	1107490 20.0
Phenanthrene, 4,5...	18.96	12.3	ng/ul	680253	4	17.46	1107490 20.0