

Data Path : Z:\HPCHEM1\BNA G\DATA\BG080416\  
 Data File : BG023456.D  
 Acq On : 4 Aug 2016 17:47  
 Operator : UM/SJ  
 Sample : PB92446BL  
 Misc :  
 ALS Vial : 3 Sample Multiplier: 1

Instrument :  
 BNA\_G  
 ClientSampleId :  
 SBLK46

Quant Time: Aug 05 02:31:41 2016  
 Quant Method : Z:\HPCHEM1\BNA G\METHODS\SOM02.2-EPA-BG080416.M  
 Quant Title : SVOA CALIBRATION  
 QLast Update : Fri Aug 05 02:31:12 2016  
 Response via : Initial Calibration

Internal Standards	R.T.	QIon	Response	Conc	Units	Dev(Min)
1) 1,4-Dichlorobenzene-d4	8.12	152	93585	20.00	ng/ul	0.00
18) Naphthalene-d8	10.95	136	421077	20.00	ng/ul	0.00
35) Acenaphthene-d10	14.78	164	322135	20.00	ng/ul	0.00
61) Phenanthrene-d10	17.54	188	894162	20.00	ng/ul	0.00
75) Chrysene-d12	21.92	240	2681	20.00	ng/ul	0.06
83) Perylene-d12	25.24	264	861690	20.00	ng/ul	0.00
System Monitoring Compounds						
3) 1,4-Dioxane-d8	3.49	96	13316	6.05	ng/uL	0.00
5) Phenol-d5	7.27	99	308899	32.77	ng/ul	0.00
7) Bis-(2-Chloroethyl)ether-d	7.43	67	219570	36.35	ng/ul	0.00
9) 2-Chlorophenol-d4	7.64	132	217760	33.86	ng/ul	0.00
13) 4-Methylphenol-d8	8.83	113	247515	33.63	ng/ul	0.00
19) Nitrobenzene-d5	9.38	128	309	0.09	ng/ul	0.08
22) 2-Nitrophenol-d4	10.02	143	137448	36.06	ng/ul	0.00
26) 2,4-Dichlorophenol-d3	10.57	165	241940	33.65	ng/ul	0.00
29) 4-Chloroaniline-d4	11.09	131	351337	41.65	ng/ul	0.00
43) Dimethylphthalate-d6	14.18	166	990126	37.54	ng/ul	0.00
46) Acenaphthylene-d8	14.48	160	1080272	36.39	ng/ul	0.00
51) 4-Nitrophenol-d4	14.99	143	150620	33.45	ng/ul	0.00
57) Fluorene-d10	15.78	176	899136	36.89	ng/ul	0.00
62) 4,6-Dinitro-2-methylphenol	15.89	200	181045	31.56	ng/ul	0.00
70) Anthracene-d10	17.64	188	1473878	36.59	ng/ul	0.00
76) Pyrene-d10	19.93	212	1687651	12435.77	ng/ul	0.00
87) Benzo(a)pyrene-d12	25.00	264	1490993	38.23	ng/ul	0.00
Target Compounds						
2) 1,4-Dioxane	3.51	88	958	0.41	ng/uL#	41
4) Benzaldehyde	7.28	77	491	0.09	ng/ul#	1
6) Phenol	7.35	94	72	0.01	ng/ul#	1
8) Bis(2-Chloroethyl)ether	7.53	93	1162	0.16	ng/ul#	52
10) 2-Chlorophenol	7.91	128	203	0.03	ng/ul#	36
12) 2,2'-oxybis(1-Chloropropan	8.77	45	88	0.01	ng/ul#	64
14) Acetophenone	8.72	105	224	0.02	ng/ul#	1
15) N-Nitroso-di-n-propylamine	8.83	70	6789	0.96	ng/ul#	1
17) Hexachloroethane	9.20	117	59	0.02	ng/ul#	10
20) Nitrobenzene	9.31	77	256	0.03	ng/ul#	36
21) Isophorone	9.86	82	163	0.01	ng/ul#	64
23) 2-Nitrophenol	10.11	139	191	0.05	ng/ul#	42
24) 2,4-Dimethylphenol	10.00	107	71	0.01	ng/ul#	13
25) Bis(2-Chloroethoxy)methane	10.43	93	187	0.02	ng/ul#	49
28) Naphthalene	10.93	128	130	0.01	ng/ul#	67
30) 4-Chloroaniline	11.10	127	869	0.10	ng/ul	95
31) Hexachlorobutadiene	11.28	225	134	0.03	ng/ul#	16
32) Caprolactam	11.76	113	200	0.07	ng/ul#	1
34) 2-Methylnaphthalene	12.45	142	161	0.01	ng/ul#	3
37) Hexachlorocyclopentadiene	12.96	237	118	0.02	ng/ul#	27
41) 2-Chloronaphthalene	13.66	162	245	0.01	ng/ul#	46
42) 2-Nitroaniline	13.72	65	81	0.01	ng/ul#	1
44) Dimethylphthalate	14.21	163	63	0.00	ng/ul#	75

Data Path : Z:\HPCHEM1\BNA G\DATA\BG080416\  
 Data File : BG023456.D  
 Acq On : 4 Aug 2016 17:47  
 Operator : UM/SJ  
 Sample : PB92446BL  
 Misc :  
 ALS Vial : 3 Sample Multiplier: 1

Instrument :  
 BNA\_G  
 ClientSampleId :  
 SBLK46

Quant Time: Aug 05 02:31:41 2016  
 Quant Method : Z:\HPCHEM1\BNA G\METHODS\SOM02.2-EPA-BG080416.M  
 Quant Title : SVOA CALIBRATION  
 QLast Update : Fri Aug 05 02:31:12 2016  
 Response via : Initial Calibration

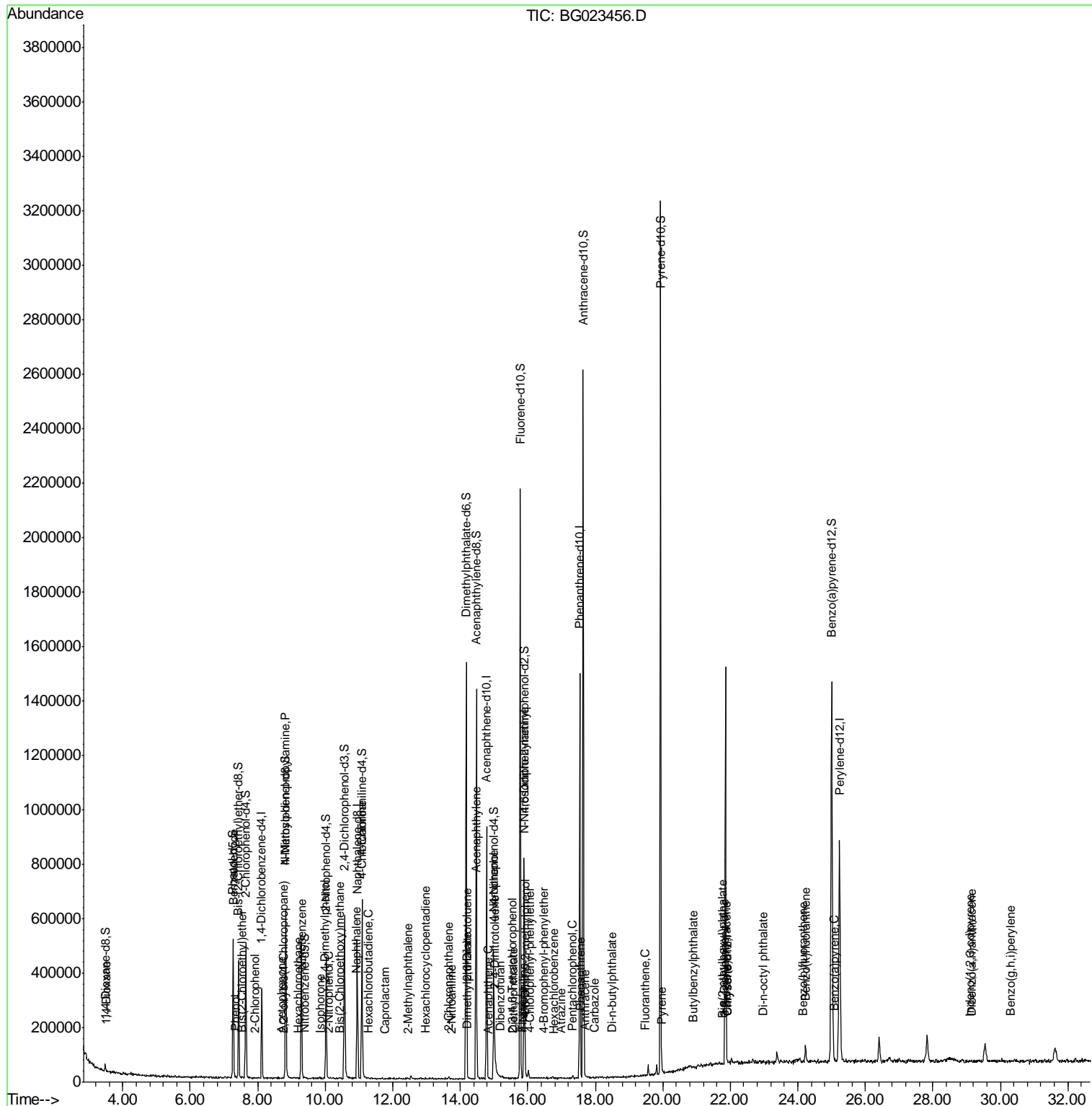
Internal Standards	R.T.	QIon	Response	Conc	Units	Dev(Min)
45) 2,6-Dinitrotoluene	14.20	165	316	0.06	ng/ul#	34
47) Acenaphthylene	14.49	152	134	0.00	ng/ul#	59
49) Acenaphthene	14.84	153	60	0.00	ng/ul#	1
52) 4-Nitrophenol	15.01	109	370	0.08	ng/ul#	1
53) Dibenzofuran	15.18	168	198	0.01	ng/ul#	40
54) 2,4-Dinitrotoluene	15.02	165	54	0.01	ng/ul#	1
55) 2,3,4,6-Tetrachlorophenol	15.53	232	55	0.01	ng/ul#	39
56) Diethylphthalate	15.58	149	83	0.00	ng/ul#	59
58) Fluorene	15.83	166	148	0.01	ng/ul#	57
59) 4-Chlorophenyl-phenylether	16.06	204	193	0.01	ng/ul#	28
60) 4-Nitroaniline	15.85	138	81	0.01	ng/ul#	24
63) 4,6-Dinitro-2-methylphenol	15.93	198	184	0.03	ng/ul#	1
64) N-Nitrosodiphenylamine	15.90	169	979	0.04	ng/ul#	27
65) 4-Bromophenyl-phenylether	16.46	248	134	0.01	ng/ul#	6
66) Hexachlorobenzene	16.77	284	66	0.01	ng/ul#	28
67) Atrazine	16.99	200	64	0.01	ng/ul#	36
68) Pentachlorophenol	17.33	266	192	0.03	ng/ul#	14
69) Phenanthrene	17.57	178	192	0.00	ng/ul#	59
71) Anthracene	17.71	178	151	0.00	ng/ul#	59
72) Carbazole	17.97	167	158	0.00	ng/ul#	57
73) Di-n-butylphthalate	18.50	149	264	0.01	ng/ul#	79
74) Fluoranthene	19.48	202	147	0.00	ng/ul#	69
77) Pyrene	19.98	202	126	0.76	ng/ul#	65
78) Butylbenzylphthalate	20.90	149	602	9.47	ng/ul#	52
79) 3,3'-Dichlorobenzidine	21.81	252	282	5.97	ng/ul#	26
80) Benzo(a)anthracene	21.90	228	73	0.48	ng/ul#	1
81) Bis(2-ethylhexyl)phthalate	21.77	149	543	6.42	ng/ul#	52
82) Chrysene	21.91	228	613	4.47	ng/ul#	50
84) Di-n-octyl phthalate	22.99	149	490	0.01	ng/ul	100
85) Benzo(b)fluoranthene	24.15	252	326	0.01	ng/ul#	21
86) Benzo(k)fluoranthene	24.23	252	303	0.01	ng/ul#	1
88) Benzo(a)pyrene	25.07	252	390	0.01	ng/ul#	36
89) Indeno(1,2,3-cd)pyrene	29.09	276	266	0.00	ng/ul#	51
90) Dibenzo(a,h)anthracene	29.16	278	55	0.00	ng/ul#	54
91) Benzo(a,h,i)perylene	30.30	276	120	0.00	ng/ul#	51

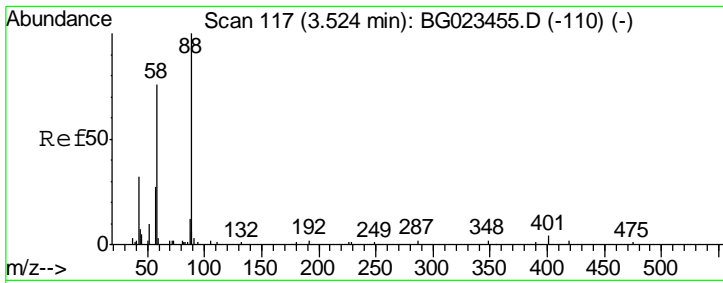
(#) = qualifier out of range (m) = manual integration (+) = signals summed

Data Path : Z:\HPCHEM1\BNA G\DATA\BG080416\  
 Data File : BG023456.D  
 Acq On : 4 Aug 2016 17:47  
 Operator : UM/SJ  
 Sample : PB92446BL  
 Misc :  
 ALS Vial : 3 Sample Multiplier: 1

Instrument :  
 BNA\_G  
 Client Sampled :  
 SBLK46

Quant Time: Aug 05 02:31:41 2016  
 Quant Method : Z:\HPCHEM1\BNA G\METHODS\SOM02.2-EPA-BG080416.M  
 Quant Title : SVOA CALIBRATION  
 QLast Update : Fri Aug 05 02:31:12 2016  
 Response via : Initial Calibration

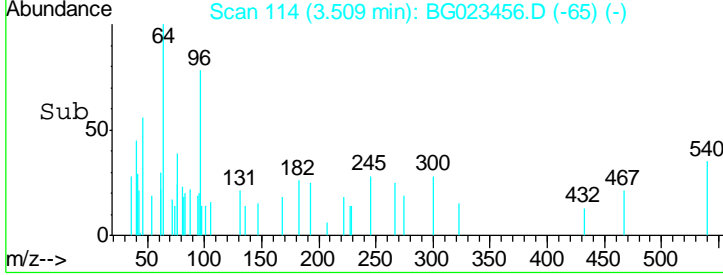
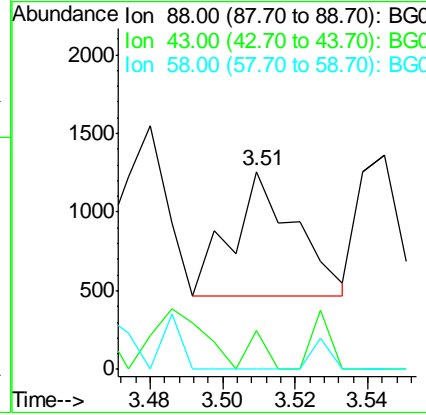
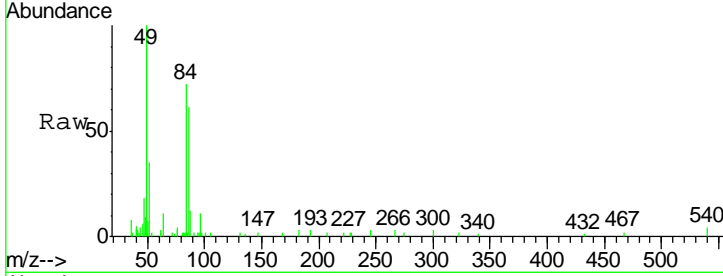




#2  
 1,4-Dioxane  
 Concen: 0.41 ng/uL  
 RT: 3.51 min Scan# 114  
 Delta R.T. -0.02 min  
 Lab File: BG023456.D  
 Acq: 4 Aug 2016 17:47

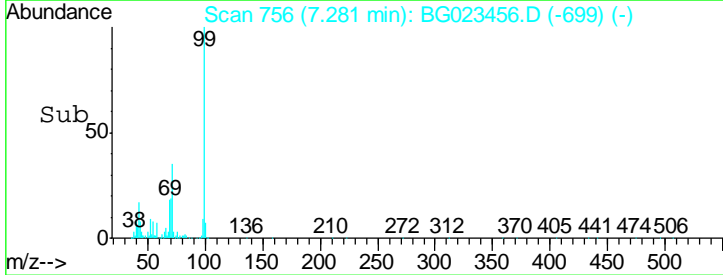
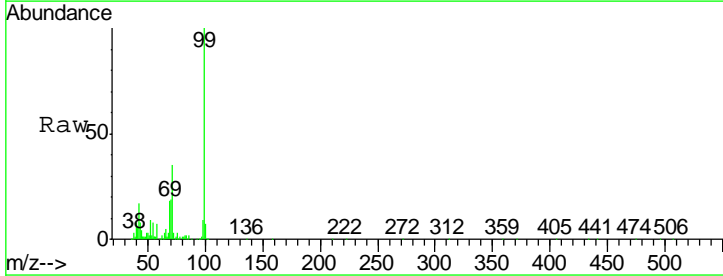
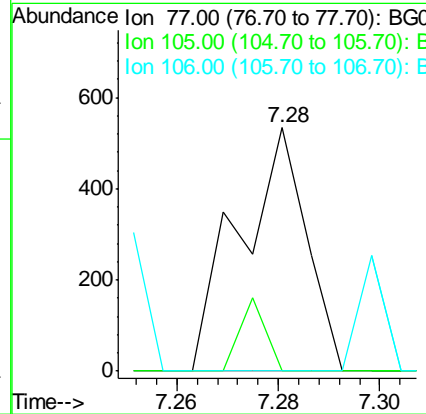
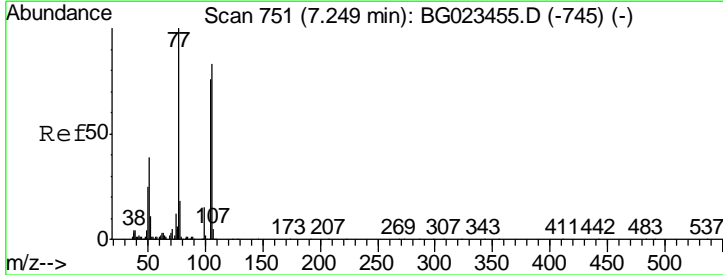
Instrument :  
 BNA\_G  
 ClientSampled :  
 SBLK46

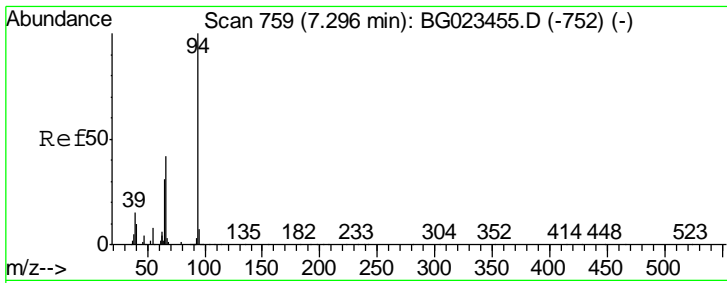
Tgt Ion	Resp	Lower	Upper
88	100		
43	19.4	16.6	24.8
58	0.0	47.2	70.8#



#4  
 Benzaldehyde  
 Concen: 0.09 ng/ul  
 RT: 7.28 min Scan# 756  
 Delta R.T. 0.03 min  
 Lab File: BG023456.D  
 Acq: 4 Aug 2016 17:47

Tgt Ion	Resp	Lower	Upper
77	100		
105	0.0	83.8	125.8#
106	0.0	77.9	116.9#

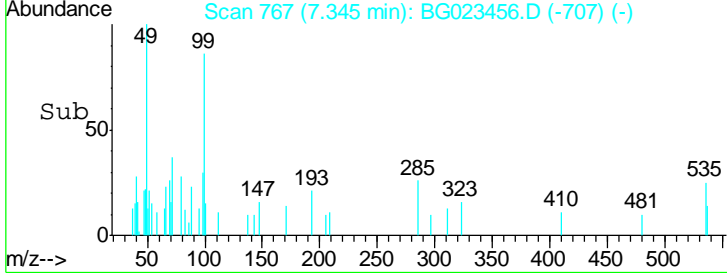
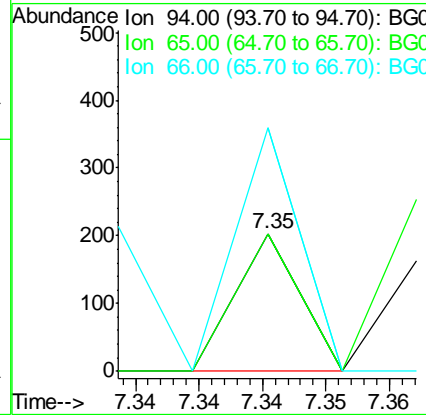
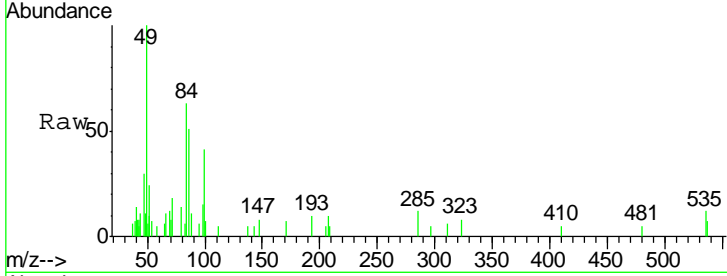




#6  
 Phenol  
 Concen: 0.01 ng/ul  
 RT: 7.35 min Scan# 767  
 Delta R.T. 0.05 min  
 Lab File: BG023456.D  
 Acq: 4 Aug 2016 17:47

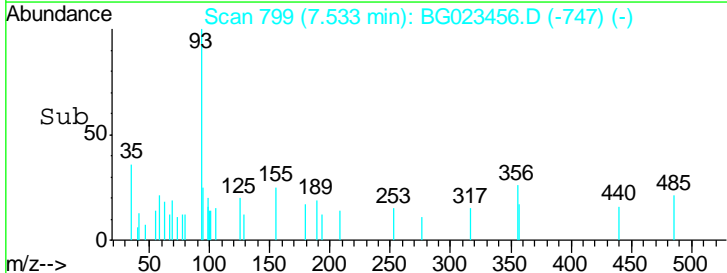
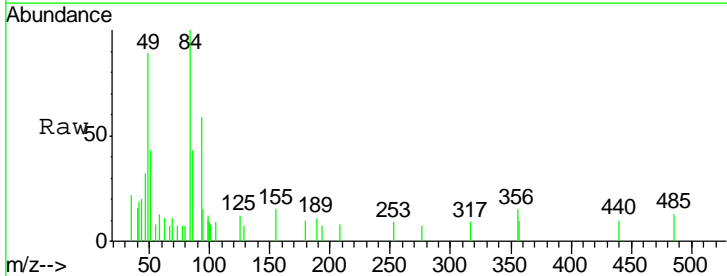
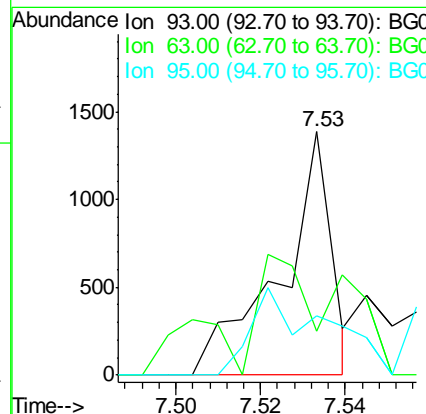
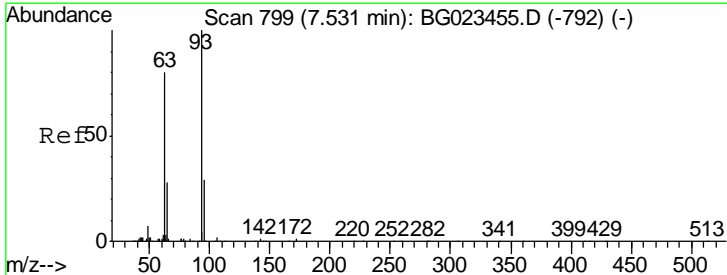
**Instrument :**  
 BNA\_G  
**ClientSampled :**  
 SBLK46

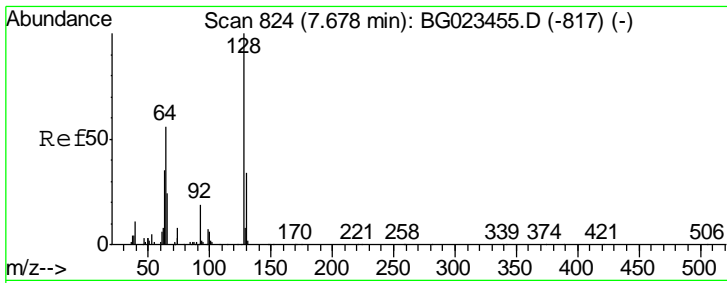
Tgt Ion	Resp	Lower	Upper
94	100		
65	100.0	16.8	25.2#
66	176.8	22.6	33.8#



#8  
 Bis(2-Chloroethyl)ether  
 Concen: 0.16 ng/ul  
 RT: 7.53 min Scan# 799  
 Delta R.T. 0.00 min  
 Lab File: BG023456.D  
 Acq: 4 Aug 2016 17:47

Tgt Ion	Resp	Lower	Upper
93	100		
63	18.1	56.0	84.0#
95	24.6	27.7	41.5#

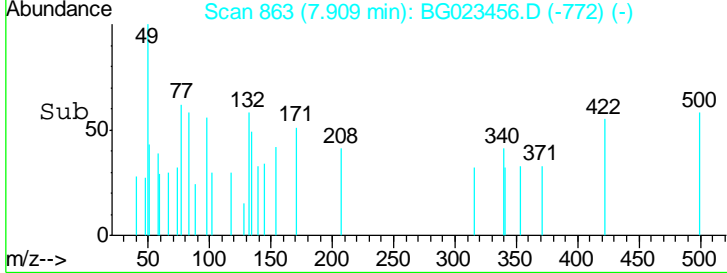
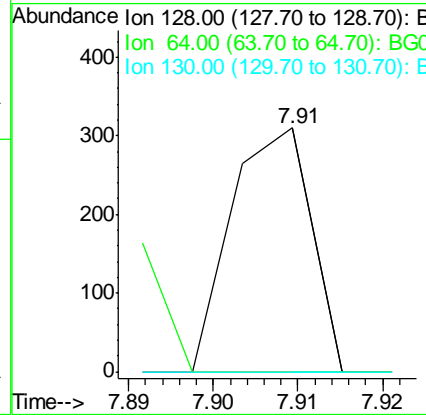
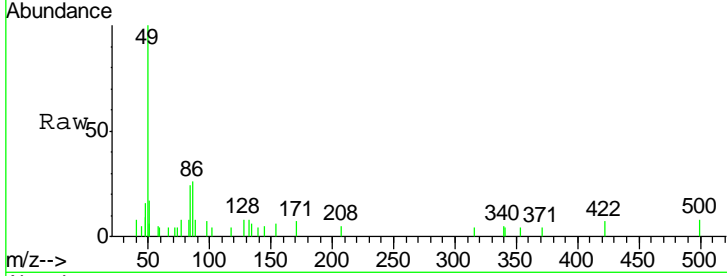




#10  
 2-Chlorophenol  
 Concen: 0.03 ng/ul  
 RT: 7.91 min Scan# 863  
 Delta R.T. 0.23 min  
 Lab File: BG023456.D  
 Acq: 4 Aug 2016 17:47

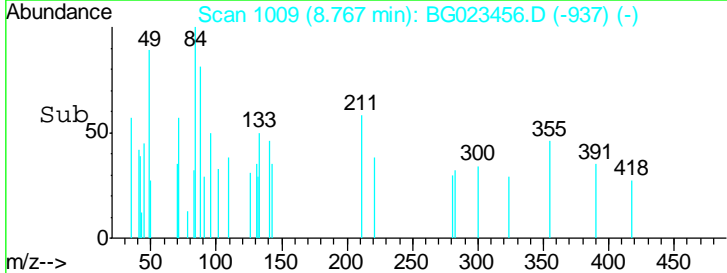
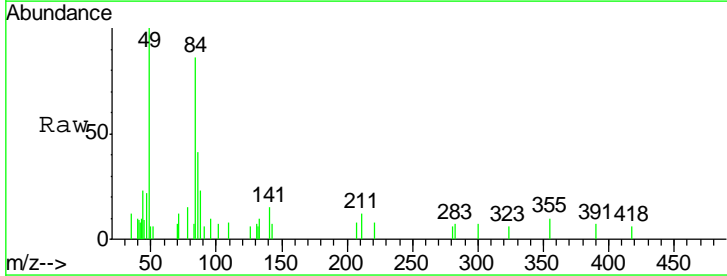
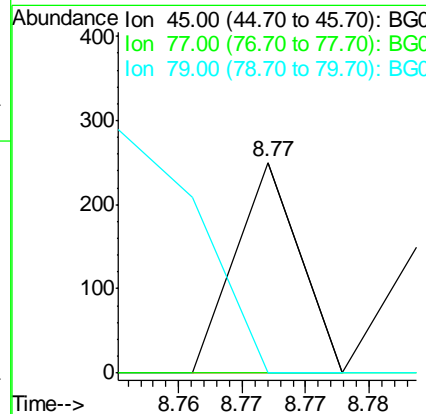
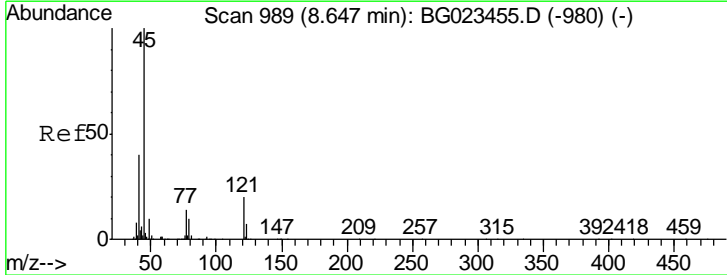
Instrument :  
 BNA\_G  
 ClientSampled :  
 SBLK46

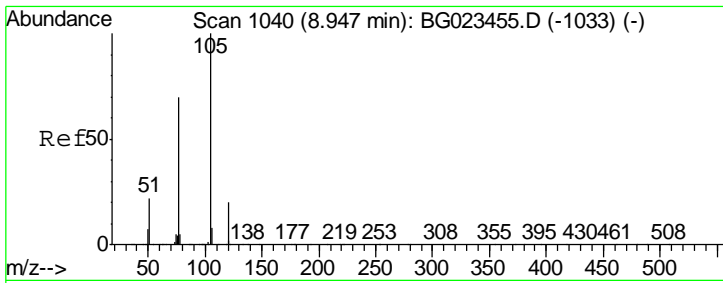
Tgt Ion	Ratio	Lower	Upper
128	100		
64	0.0	34.2	51.4#
130	0.0	27.0	40.4#



#12  
 2,2'-oxybis(1-Chloropropane)  
 Concen: 0.01 ng/ul  
 RT: 8.77 min Scan# 1009  
 Delta R.T. 0.12 min  
 Lab File: BG023456.D  
 Acq: 4 Aug 2016 17:47

Tgt Ion	Ratio	Lower	Upper
45	100		
77	0.0	13.4	20.2#
79	0.0	10.2	15.4#

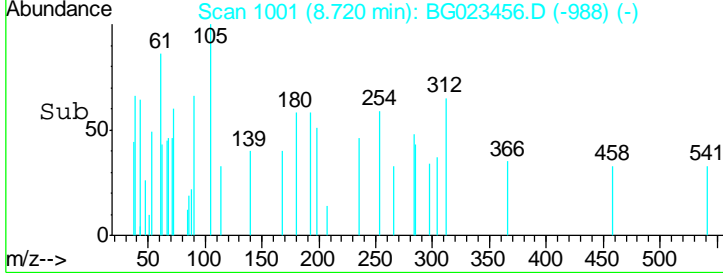
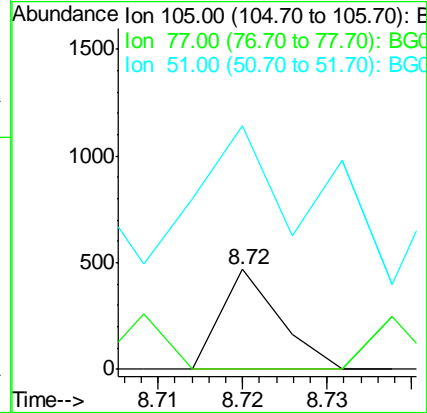
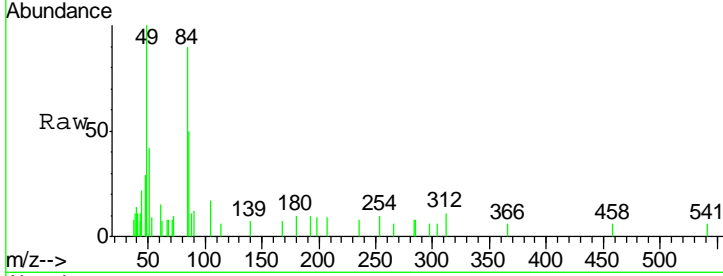




#14  
 Acetophenone  
 Concen: 0.02 ng/ul  
 RT: 8.72 min Scan# 1001  
 Delta R.T. -0.23 min  
 Lab File: BG023456.D  
 Acq: 4 Aug 2016 17:47

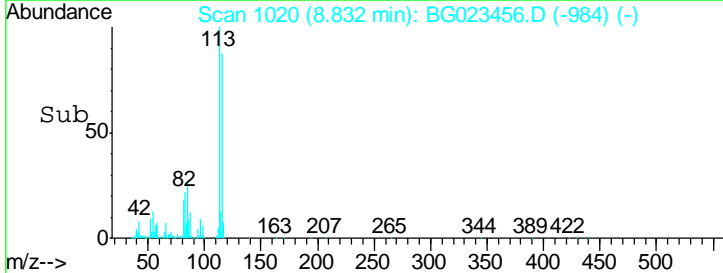
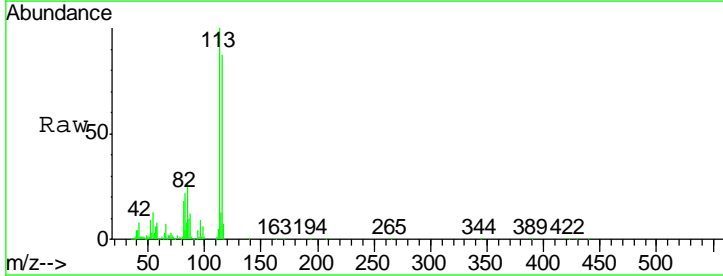
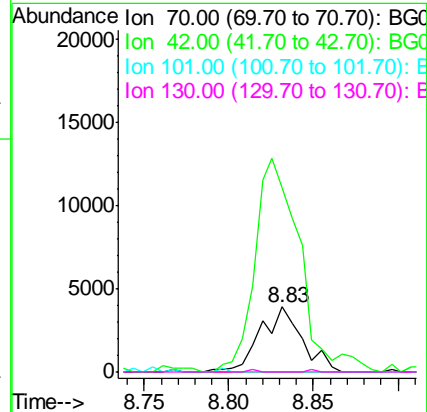
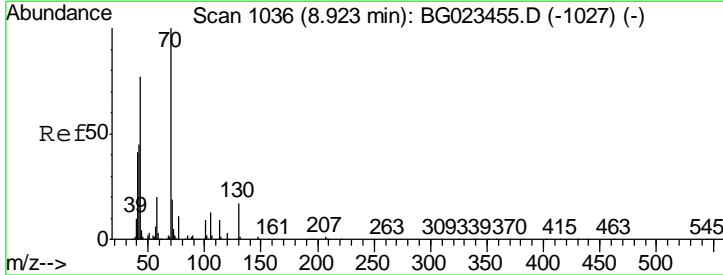
Instrument :  
 BNA\_G  
 ClientSampled :  
 SBLK46

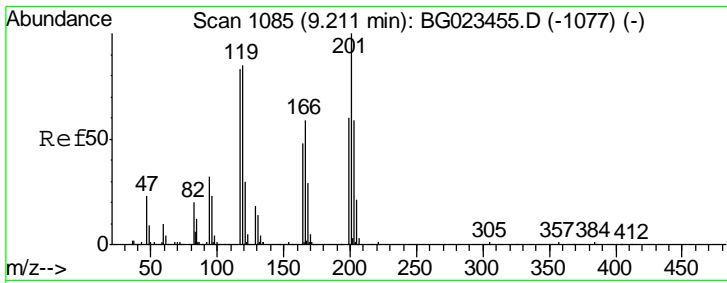
Tgt Ion	Resp	Lower	Upper
105	100		
77	0.0	56.1	84.1#
51	243.3	14.6	22.0#



#15  
 N-Nitroso-di-n-propylamine  
 Concen: 0.96 ng/ul  
 RT: 8.83 min Scan# 1020  
 Delta R.T. -0.09 min  
 Lab File: BG023456.D  
 Acq: 4 Aug 2016 17:47

Tgt Ion	Resp	Lower	Upper
70	100		
42	282.9	31.4	47.2#
101	0.0	8.6	13.0#
130	0.0	19.0	28.4#

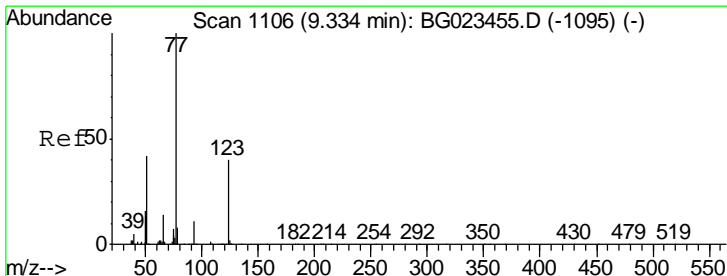
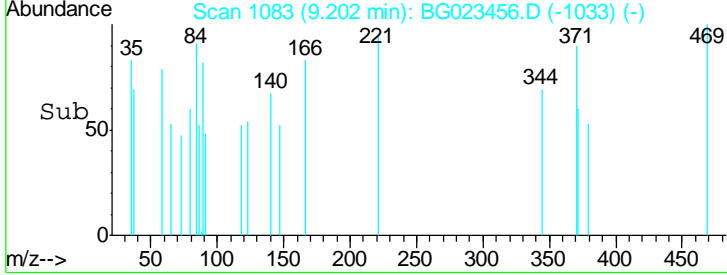
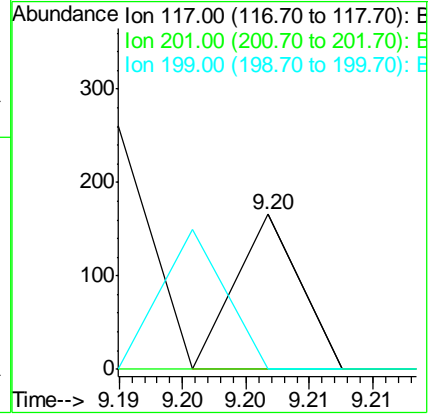
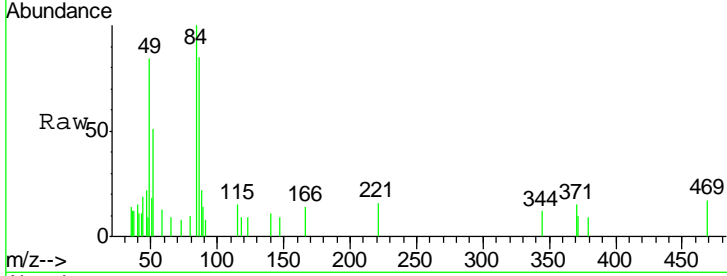




#17  
 Hexachloroethane  
 Concen: 0.02 ng/ul  
 RT: 9.20 min Scan# 1083  
 Delta R.T. -0.01 min  
 Lab File: BG023456.D  
 Acq: 4 Aug 2016 17:47

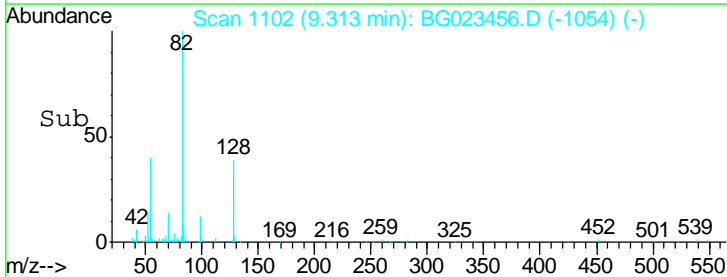
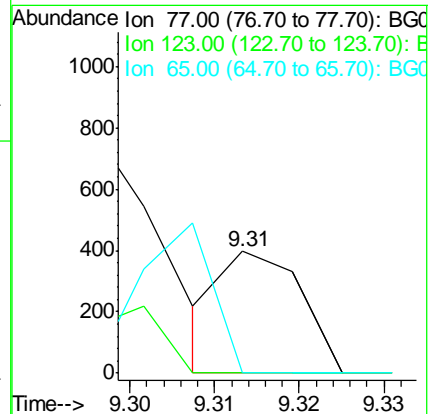
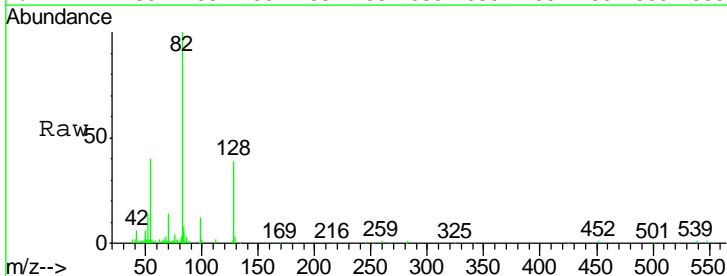
Instrument :  
 BNA\_G  
 ClientSampled :  
 SBLK46

Tgt Ion	Resp	Lower	Upper
117	100		
201	0.0	76.8	115.2#
199	0.0	43.5	65.3#

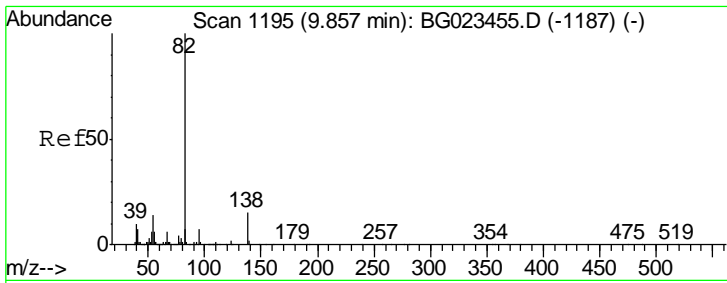


#20  
 Nitrobenzene  
 Concen: 0.03 ng/ul  
 RT: 9.31 min Scan# 1102  
 Delta R.T. -0.02 min  
 Lab File: BG023456.D  
 Acq: 4 Aug 2016 17:47

Tgt Ion	Resp	Lower	Upper
77	100		
123	0.0	39.5	59.3#
65	0.0	9.0	13.4#



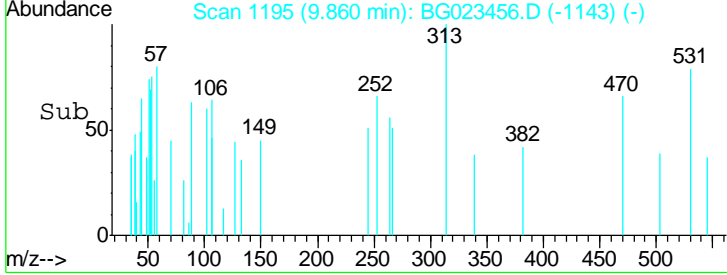
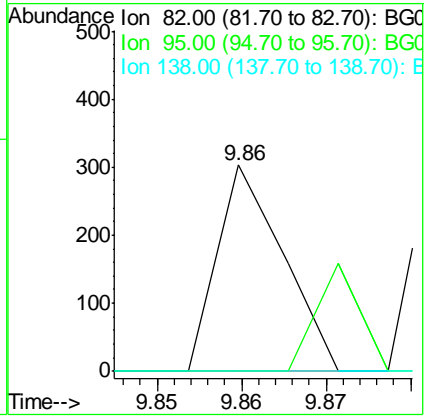
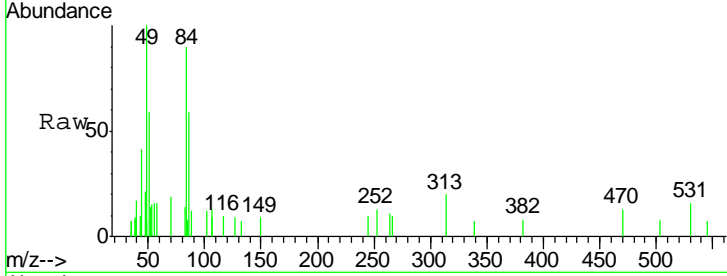




#21  
 Isophorone  
 Concen: 0.01 ng/ul  
 RT: 9.86 min Scan# 1195  
 Delta R.T. 0.00 min  
 Lab File: BG023456.D  
 Acq: 4 Aug 2016 17:47

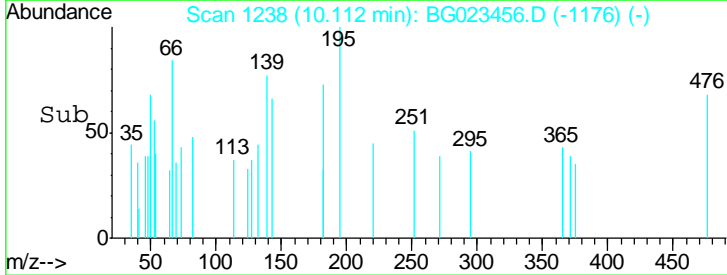
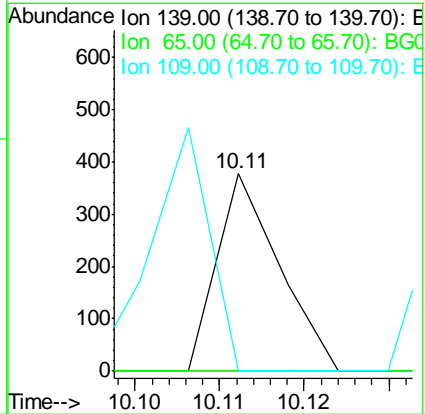
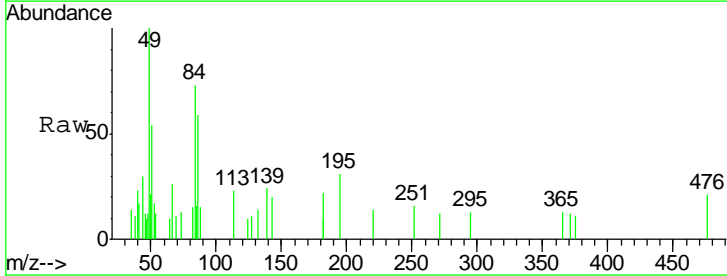
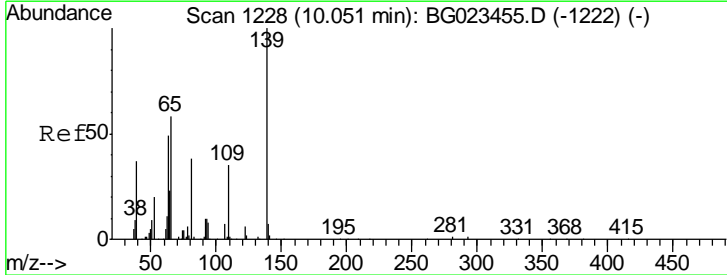
**Instrument :**  
 BNA\_G  
**ClientSampled :**  
 SBLK46

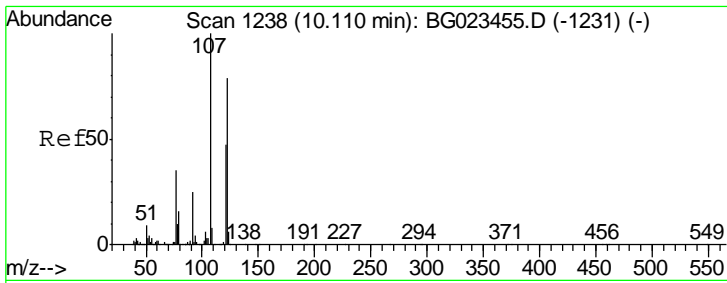
Tgt Ion	Resp	Lower	Upper
82	163		
95	0.0	5.1	7.7#
138	0.0	15.0	22.6#



#23  
 2-Nitrophenol  
 Concen: 0.05 ng/ul  
 RT: 10.11 min Scan# 1238  
 Delta R.T. 0.06 min  
 Lab File: BG023456.D  
 Acq: 4 Aug 2016 17:47

Tgt Ion	Resp	Lower	Upper
139	191		
65	0.0	31.8	47.8#
109	0.0	17.1	25.7#

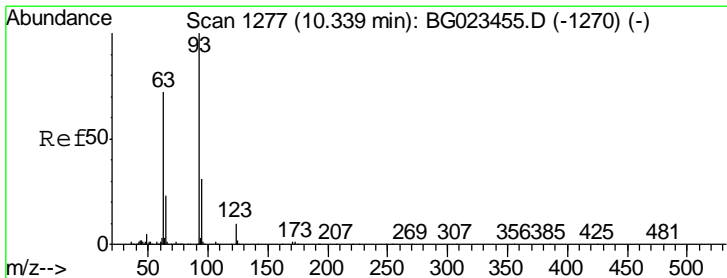
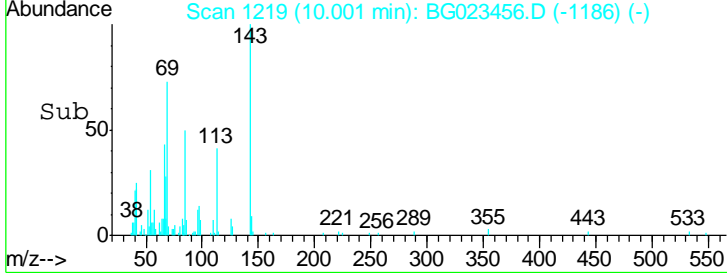
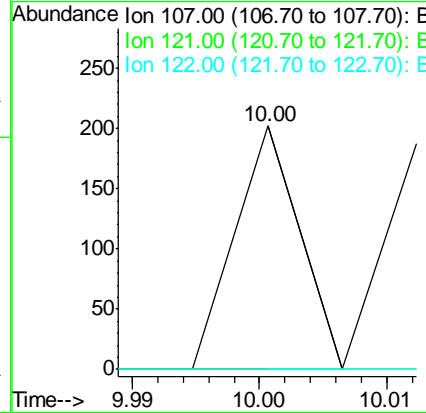
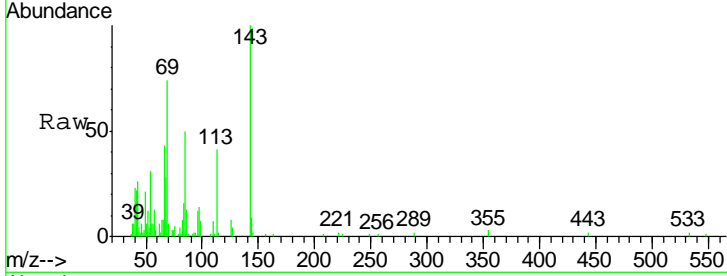




#24  
 2,4-Dimethylphenol  
 Concen: 0.01 ng/ul  
 RT: 10.00 min Scan# 1219  
 Delta R.T. -0.11 min  
 Lab File: BG023456.D  
 Acq: 4 Aug 2016 17:47

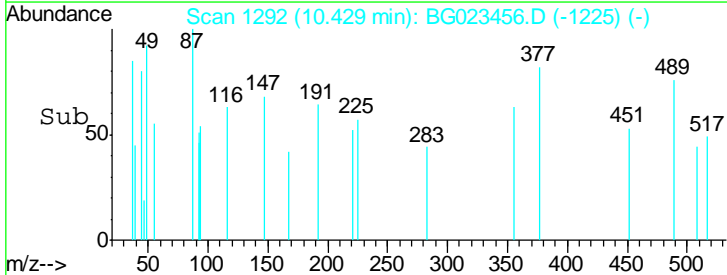
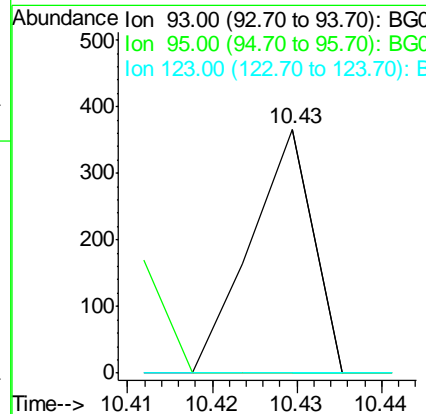
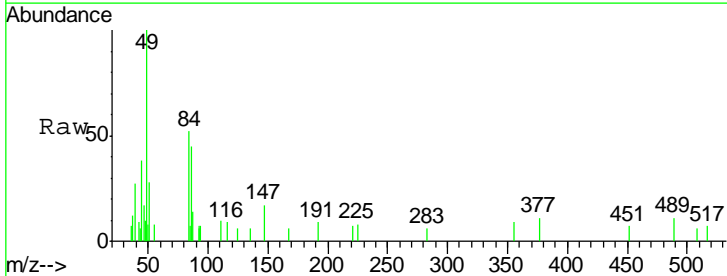
Instrument :  
 BNA\_G  
 ClientSampled :  
 SBLK46

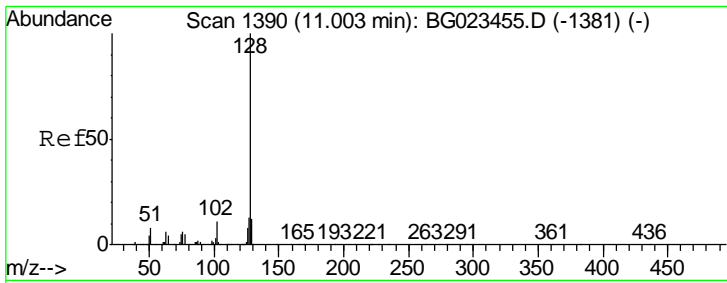
Tgt Ion	Resp	Lower	Upper
107	100		
121	0.0	43.7	65.5#
122	0.0	70.3	105.5#



#25  
 Bis(2-Chloroethoxy)methane  
 Concen: 0.02 ng/ul  
 RT: 10.43 min Scan# 1292  
 Delta R.T. 0.09 min  
 Lab File: BG023456.D  
 Acq: 4 Aug 2016 17:47

Tgt Ion	Resp	Lower	Upper
93	100		
95	0.0	26.0	39.0#
123	0.0	10.1	15.1#

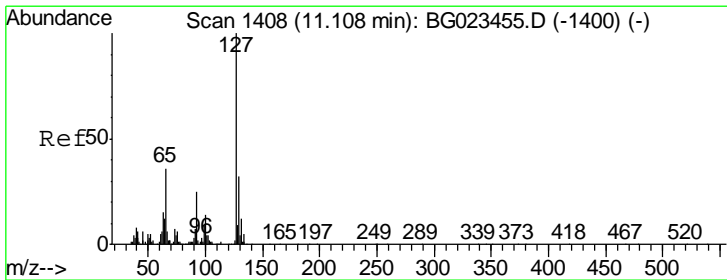
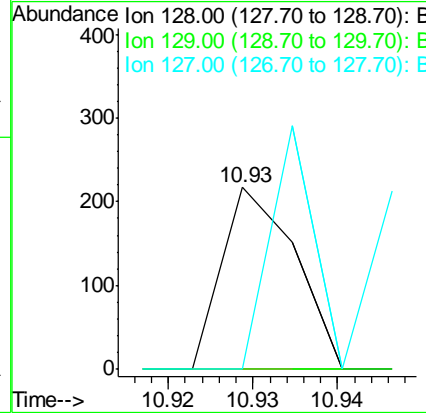
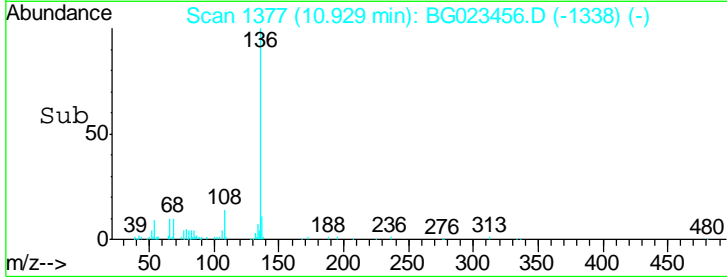
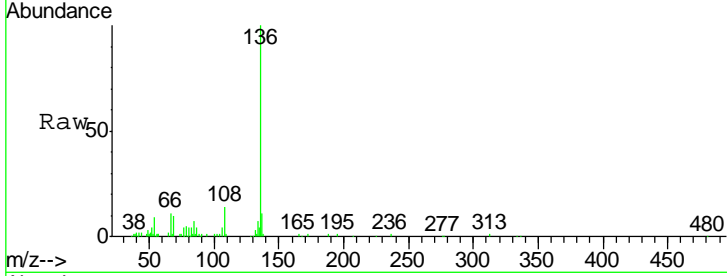




#28  
 Naphthalene  
 Concen: 0.01 ng/ul  
 RT: 10.93 min Scan# 1377  
 Delta R.T. -0.07 min  
 Lab File: BG023456.D  
 Acq: 4 Aug 2016 17:47

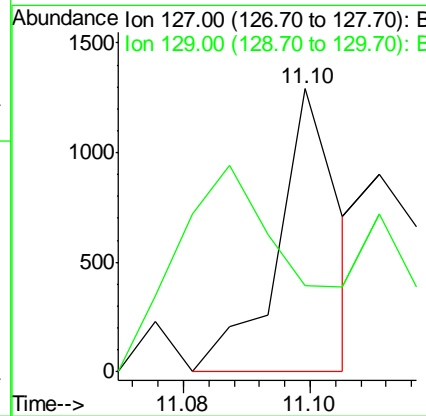
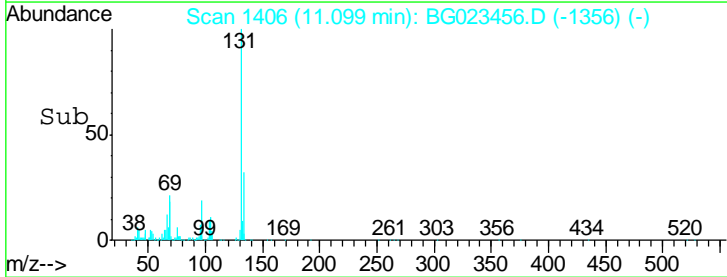
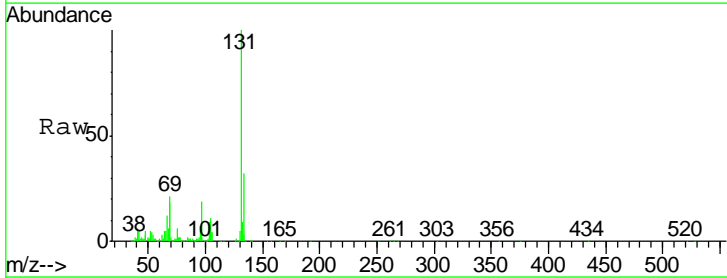
Instrument :  
 BNA\_G  
 ClientSampled :  
 SBLK46

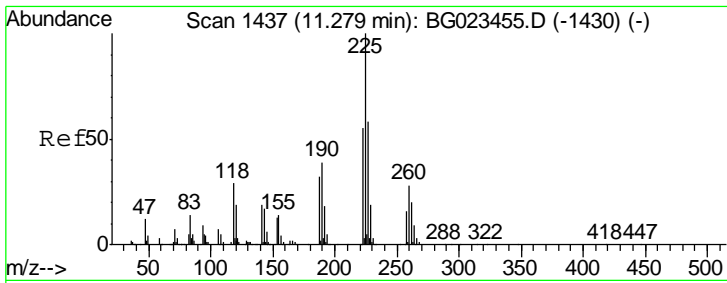
Tgt Ion	Resp	Lower	Upper
128	100		
129	0.0	9.4	14.2#
127	0.0	11.2	16.8#



#30  
 4-Chloroaniline  
 Concen: 0.10 ng/ul  
 RT: 11.10 min Scan# 1406  
 Delta R.T. -0.01 min  
 Lab File: BG023456.D  
 Acq: 4 Aug 2016 17:47

Tgt Ion	Resp	Lower	Upper
127	100		
129	30.6	26.9	40.3

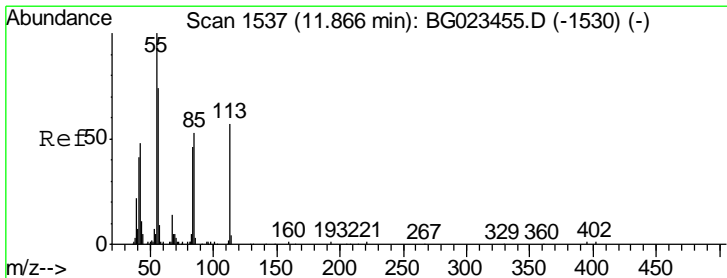
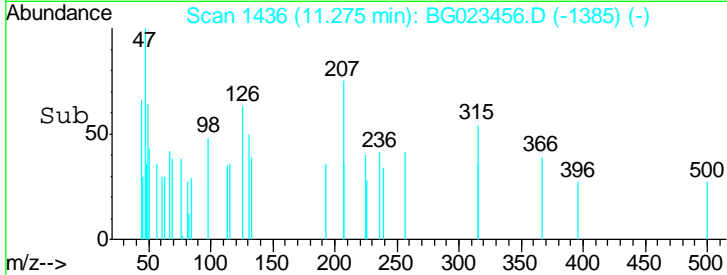
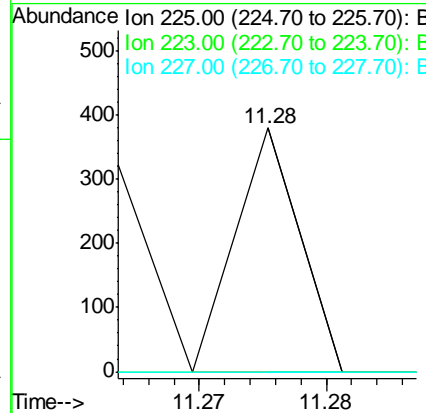
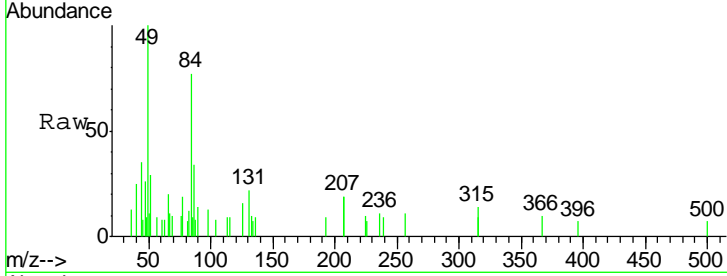




#31  
 Hexachlorobutadiene  
 Concen: 0.03 ng/ul  
 RT: 11.28 min Scan# 1436  
 Delta R.T. -0.00 min  
 Lab File: BG023456.D  
 Acq: 4 Aug 2016 17:47

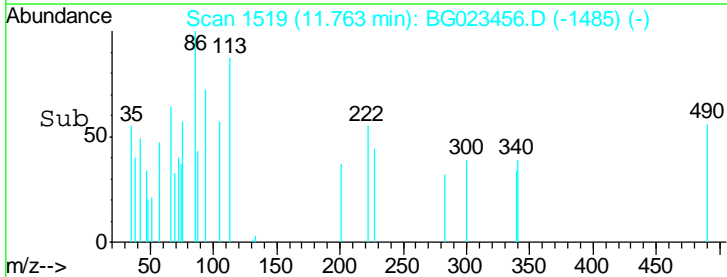
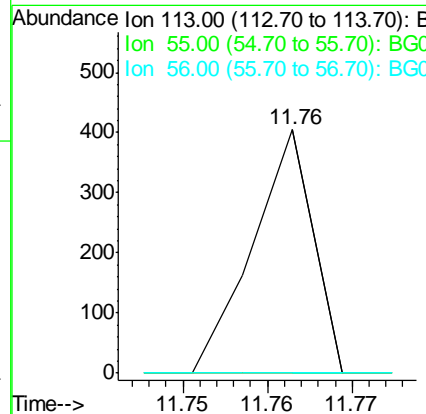
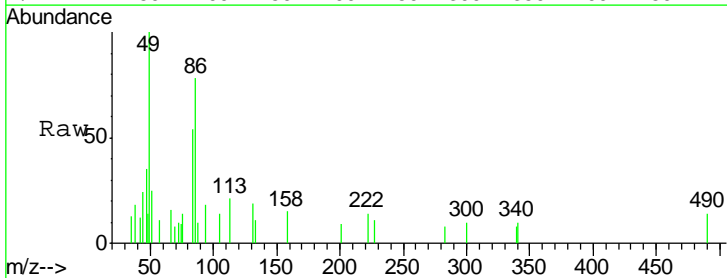
Instrument :  
 BNA\_G  
 ClientSampled :  
 SBLK46

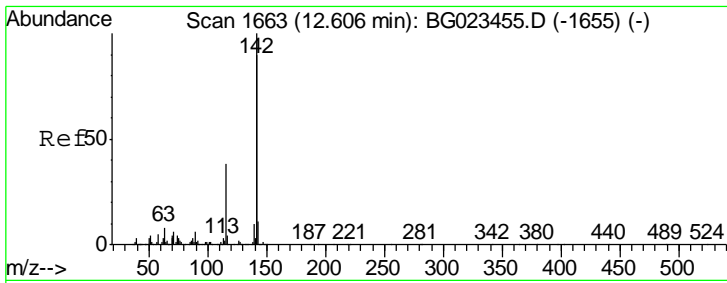
Tgt Ion	Resp	Lower	Upper
225	100		
223	0.0	54.7	82.1#
227	0.0	52.2	78.4#



#32  
 Caprolactam  
 Concen: 0.07 ng/ul  
 RT: 11.76 min Scan# 1519  
 Delta R.T. -0.10 min  
 Lab File: BG023456.D  
 Acq: 4 Aug 2016 17:47

Tgt Ion	Resp	Lower	Upper
113	100		
55	0.0	99.6	149.4#
56	0.0	66.4	99.6#

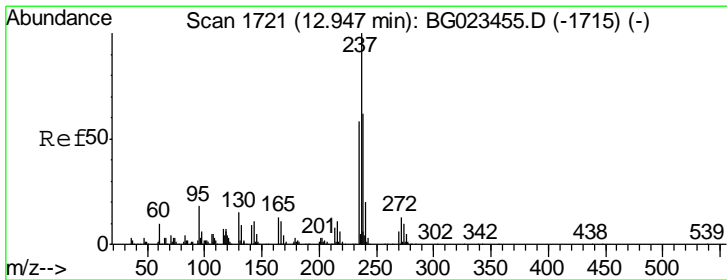
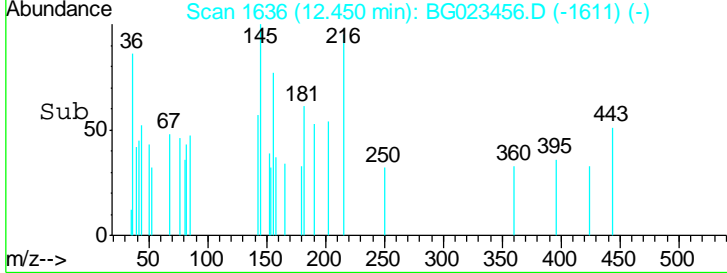
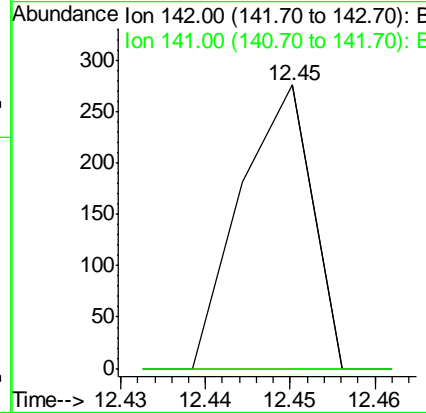
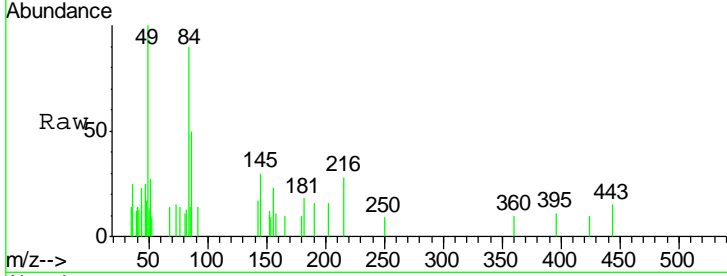




#34  
 2-Methylnaphthalene  
 Concen: 0.01 ng/ul  
 RT: 12.45 min Scan# 1636  
 Delta R.T. -0.16 min  
 Lab File: BG023456.D  
 Acq: 4 Aug 2016 17:47

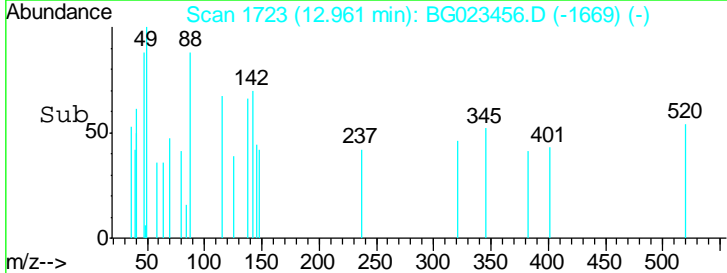
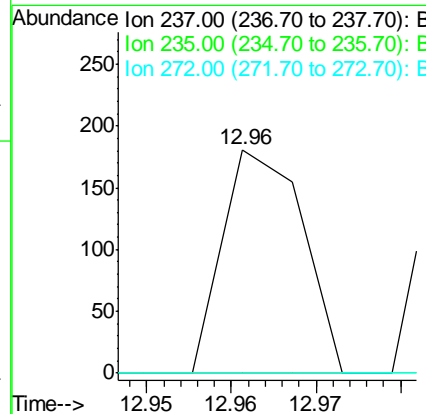
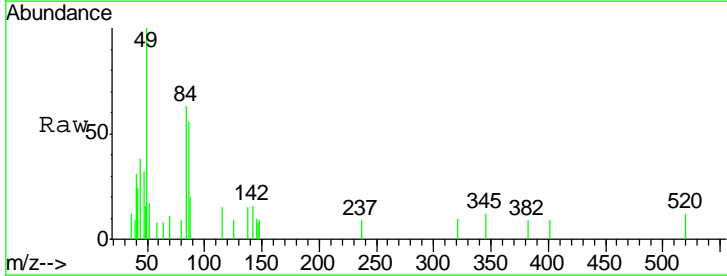
Instrument :  
 BNA\_G  
 ClientSampled :  
 SBLK46

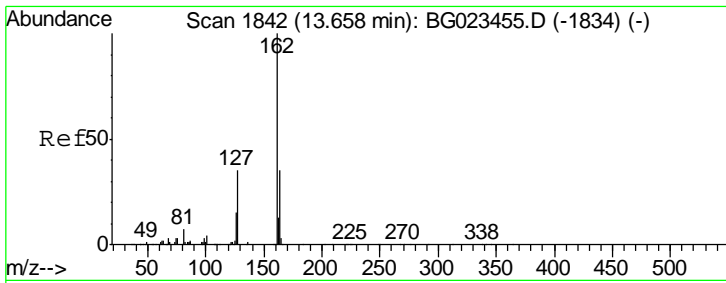
Tgt Ion: 142 Resp: 161  
 Ion Ratio Lower Upper  
 142 100  
 141 0.0 75.2 112.8#



#37  
 Hexachlorocyclopentadiene  
 Concen: 0.02 ng/ul  
 RT: 12.96 min Scan# 1723  
 Delta R.T. 0.01 min  
 Lab File: BG023456.D  
 Acq: 4 Aug 2016 17:47

Tgt Ion: 237 Resp: 118  
 Ion Ratio Lower Upper  
 237 100  
 235 0.0 49.6 74.4#  
 272 0.0 9.3 13.9#

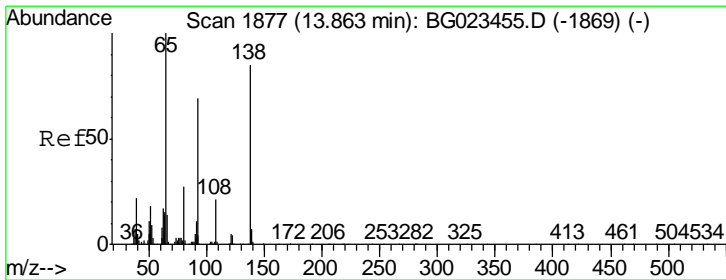
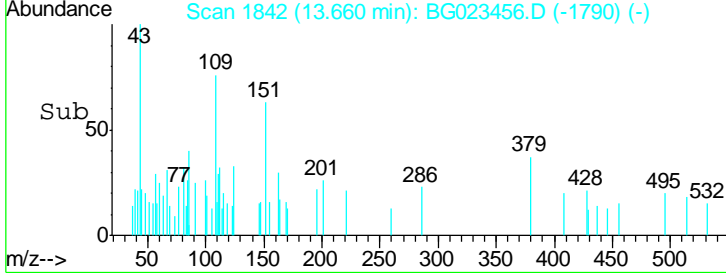
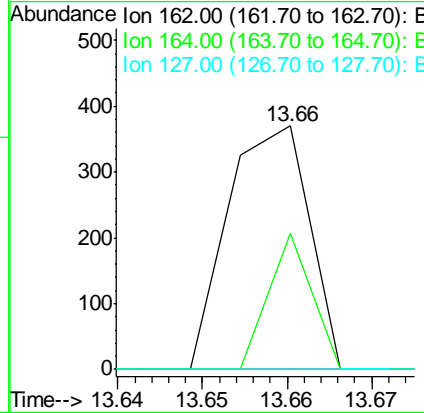
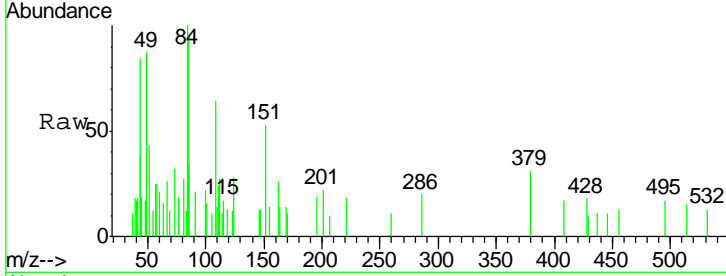




#41  
 2-Chloronaphthalene  
 Concen: 0.01 ng/ul  
 RT: 13.66 min Scan# 1842  
 Delta R.T. 0.00 min  
 Lab File: BG023456.D  
 Acq: 4 Aug 2016 17:47

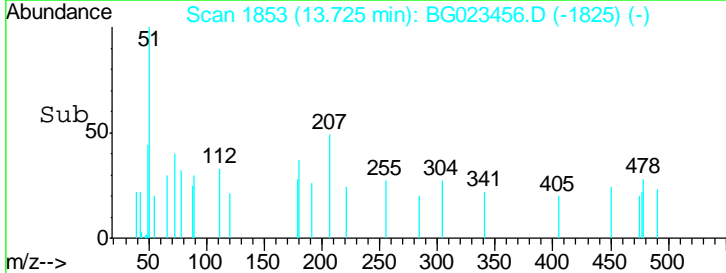
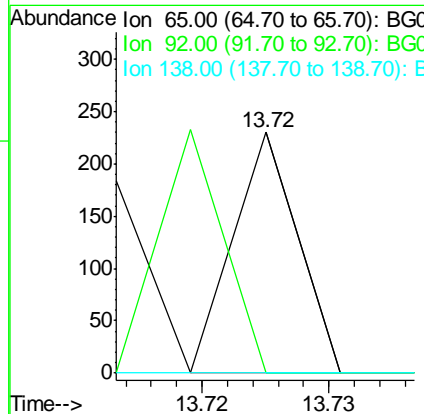
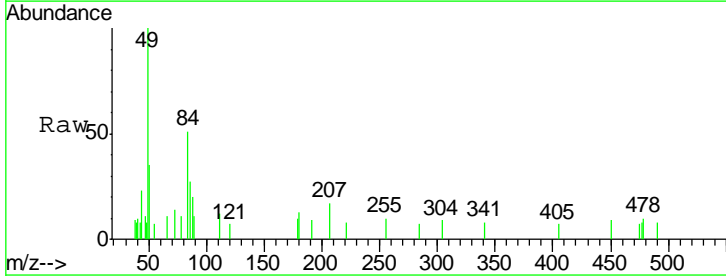
Instrument :  
 BNA\_G  
 ClientSampled :  
 SBLK46

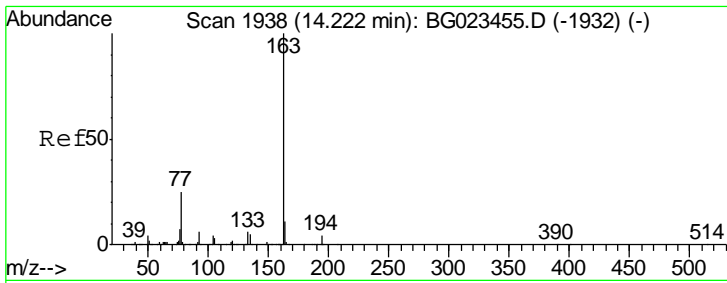
Tgt Ion	Resp	Lower	Upper
162	100		
164	55.7	25.4	38.2#
127	0.0	30.2	45.4#



#42  
 2-Nitroaniline  
 Concen: 0.01 ng/ul  
 RT: 13.72 min Scan# 1853  
 Delta R.T. -0.14 min  
 Lab File: BG023456.D  
 Acq: 4 Aug 2016 17:47

Tgt Ion	Resp	Lower	Upper
65	100		
92	0.0	67.1	100.7#
138	0.0	109.6	164.4#

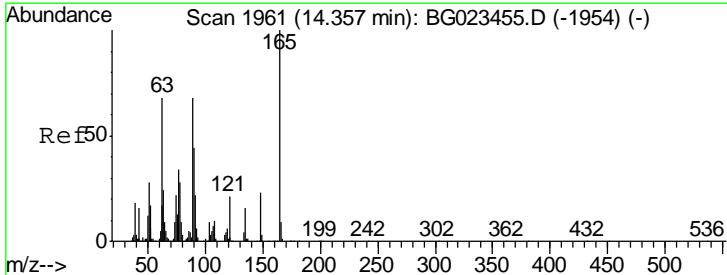
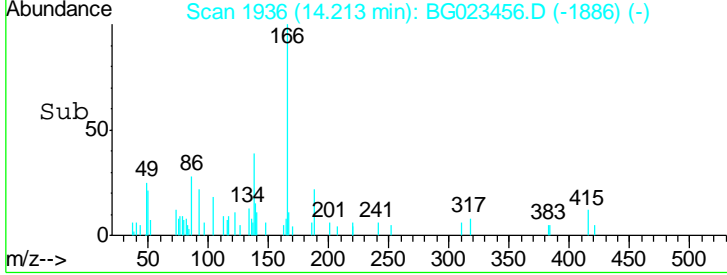
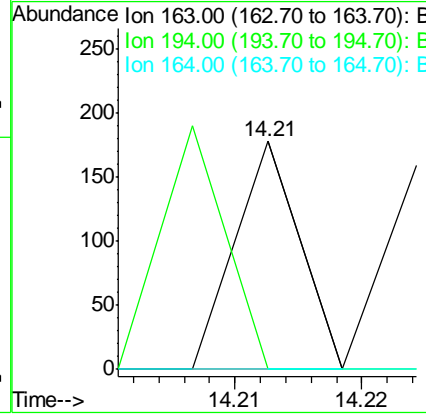
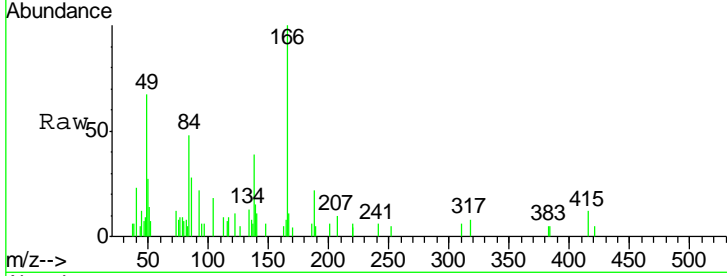




#44  
 Dimethylphthalate  
 Concen: 0.00 ng/ul  
 RT: 14.21 min Scan# 1936  
 Delta R.T. -0.01 min  
 Lab File: BG023456.D  
 Acq: 4 Aug 2016 17:47

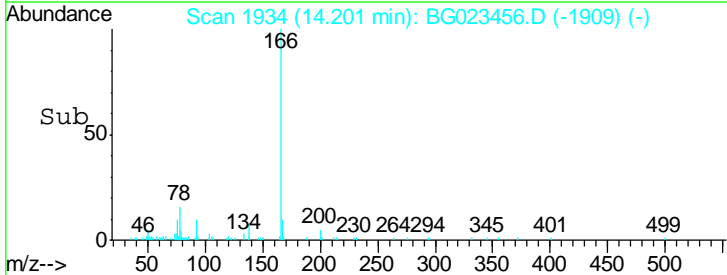
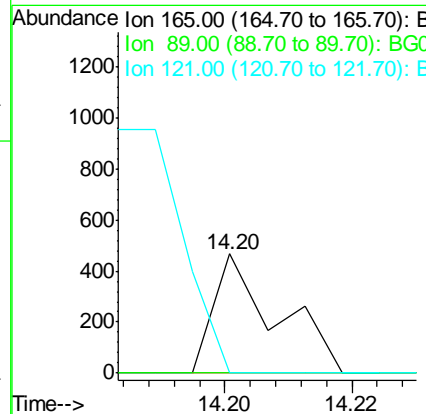
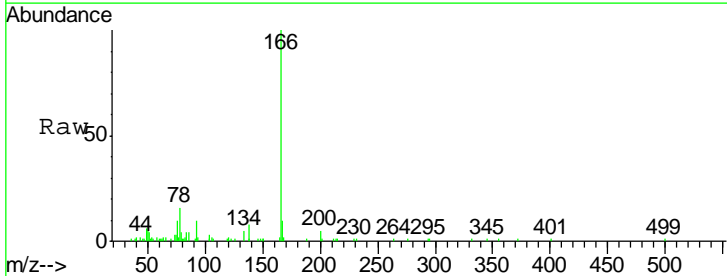
Instrument :  
 BNA\_G  
 ClientSampled :  
 SBLK46

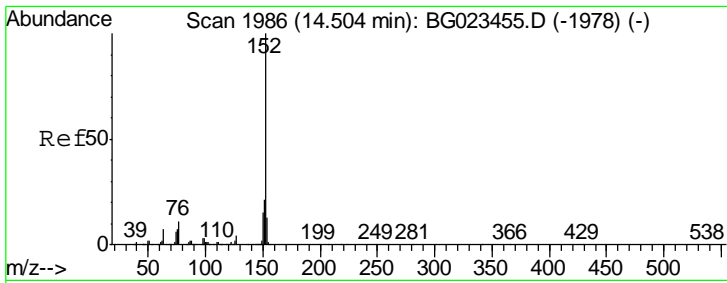
Tgt Ion	Resp	Lower	Upper
163	100		
194	0.0	3.4	5.2#
164	0.0	8.8	13.2#



#45  
 2,6-Dinitrotoluene  
 Concen: 0.06 ng/ul  
 RT: 14.20 min Scan# 1934  
 Delta R.T. -0.16 min  
 Lab File: BG023456.D  
 Acq: 4 Aug 2016 17:47

Tgt Ion	Resp	Lower	Upper
165	100		
89	0.0	41.5	62.3#
121	0.0	17.0	25.4#

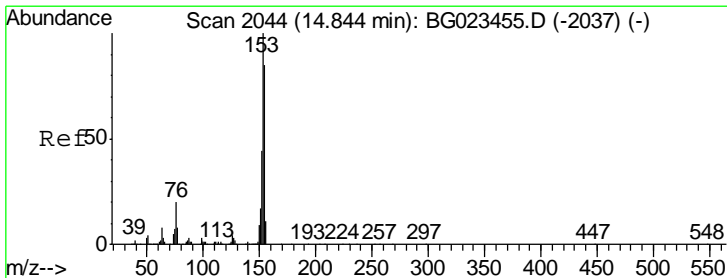
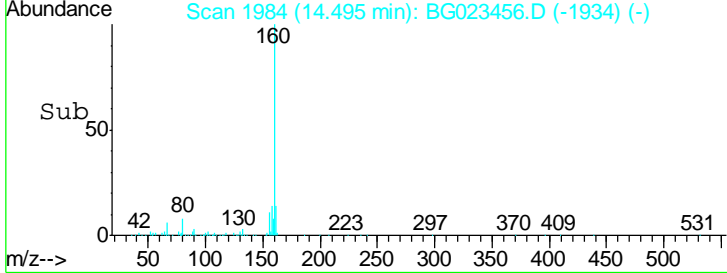
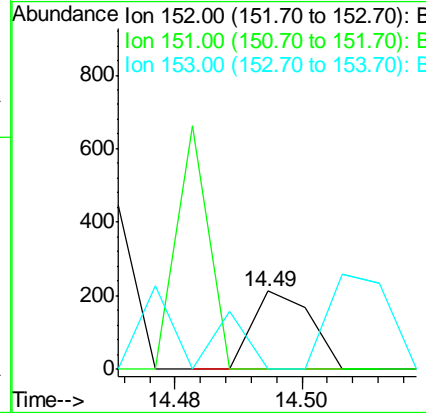
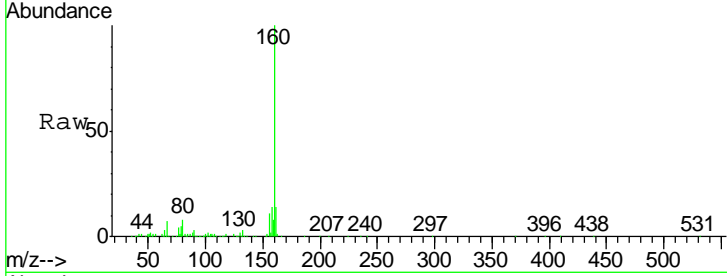




#47  
 Acenaphthylene  
 Concen: 0.00 ng/ul  
 RT: 14.49 min Scan# 1984  
 Delta R.T. -0.01 min  
 Lab File: BG023456.D  
 Acq: 4 Aug 2016 17:47

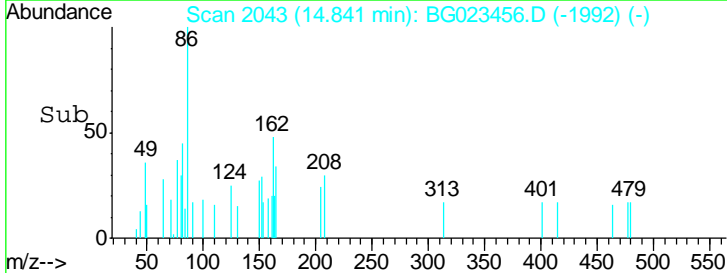
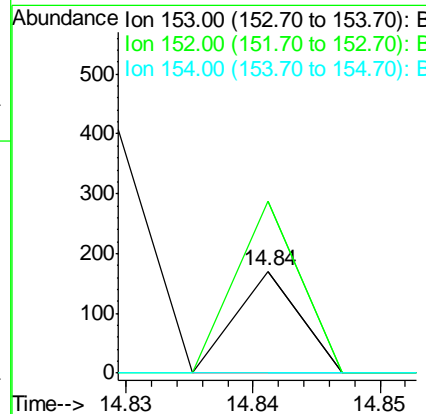
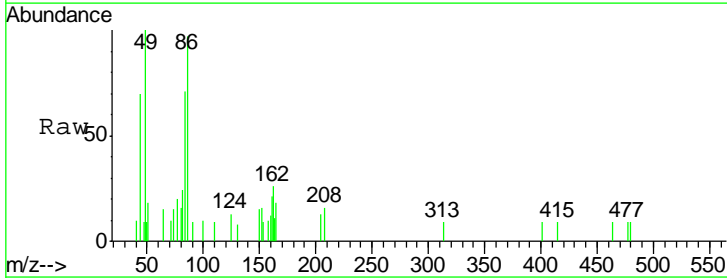
Instrument :  
 BNA\_G  
 ClientSampled :  
 SBLK46

Tgt Ion	Resp	Lower	Upper
152	100		
151	0.0	17.5	26.3#
153	0.0	11.1	16.7#

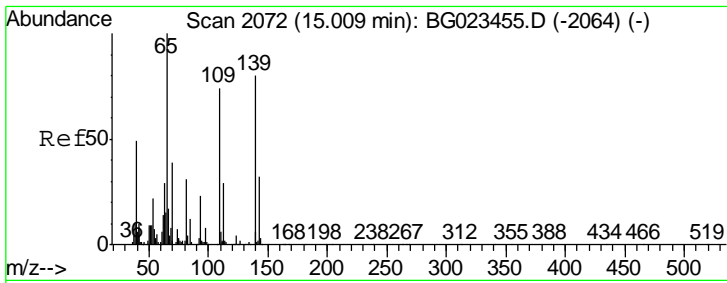


#49  
 Acenaphthene  
 Concen: 0.00 ng/ul  
 RT: 14.84 min Scan# 2043  
 Delta R.T. -0.00 min  
 Lab File: BG023456.D  
 Acq: 4 Aug 2016 17:47

Tgt Ion	Resp	Lower	Upper
153	100		
152	169.4	37.3	55.9#
154	0.0	68.2	102.2#



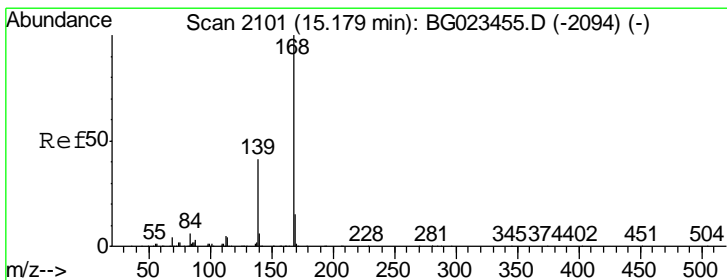
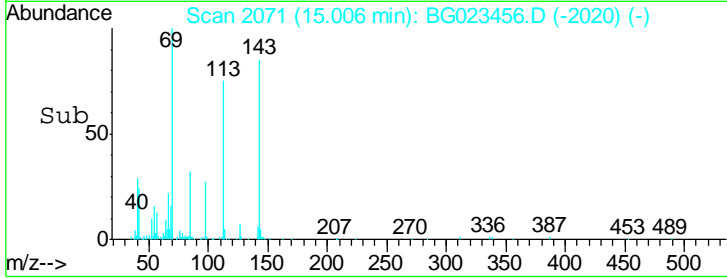
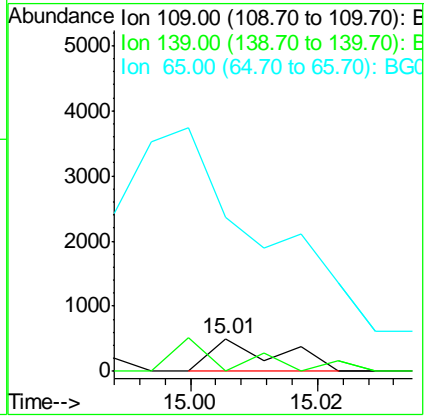
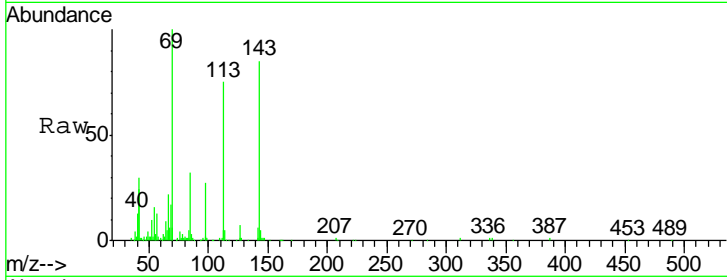




#52  
 4-Nitrophenol  
 Concen: 0.08 ng/ul  
 RT: 15.01 min Scan# 2071  
 Delta R.T. -0.00 min  
 Lab File: BG023456.D  
 Acq: 4 Aug 2016 17:47

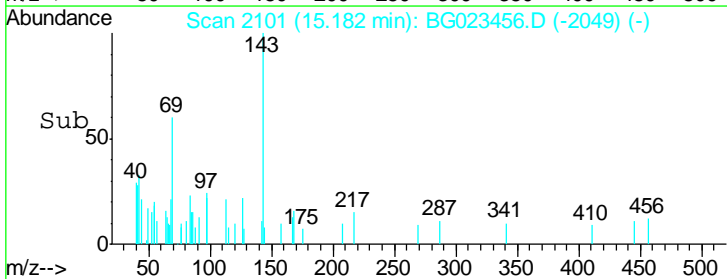
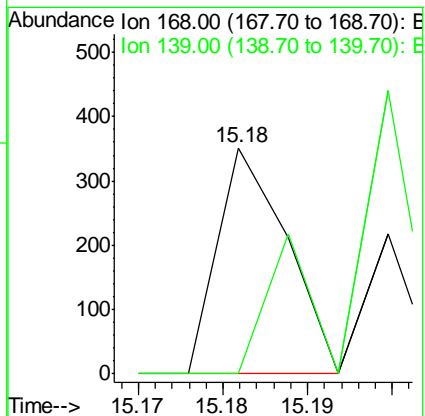
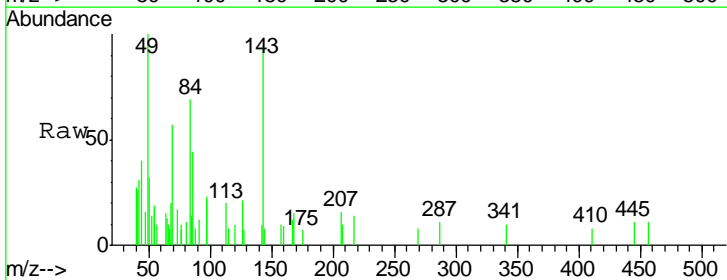
**Instrument :**  
 BNA\_G  
**ClientSampled :**  
 SBLK46

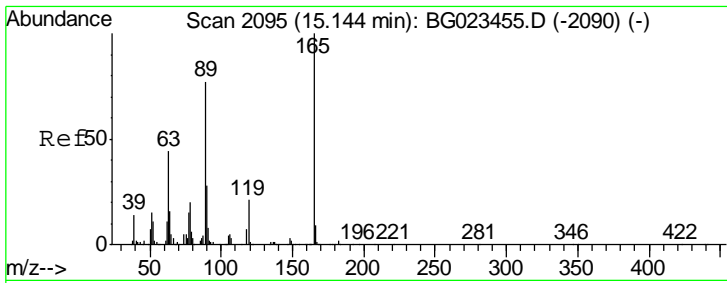
Tgt Ion	Resp	Lower	Upper
109	100		
139	0.0	136.1	204.1#
65	469.3	106.0	159.0#



#53  
 Dibenzofuran  
 Concen: 0.01 ng/ul  
 RT: 15.18 min Scan# 2101  
 Delta R.T. 0.00 min  
 Lab File: BG023456.D  
 Acq: 4 Aug 2016 17:47

Tgt Ion	Resp	Lower	Upper
168	100		
139	0.0	27.4	41.0#

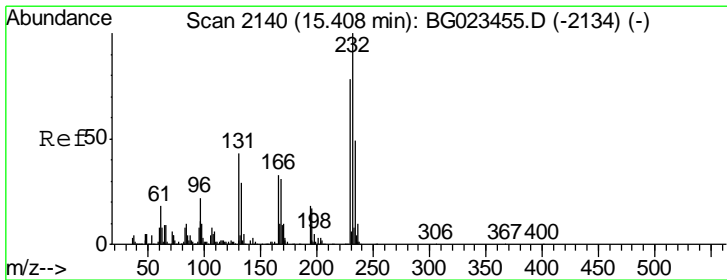
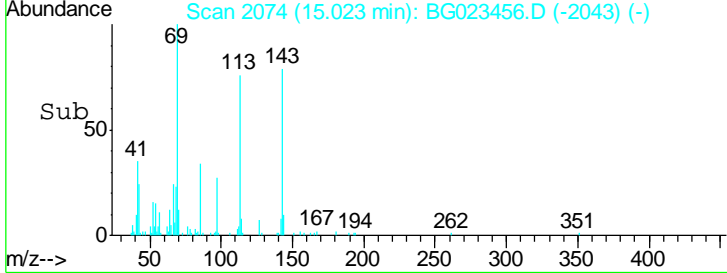
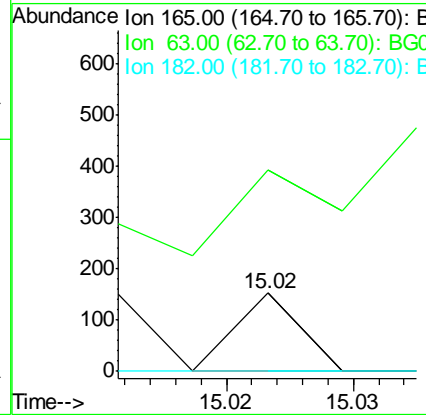
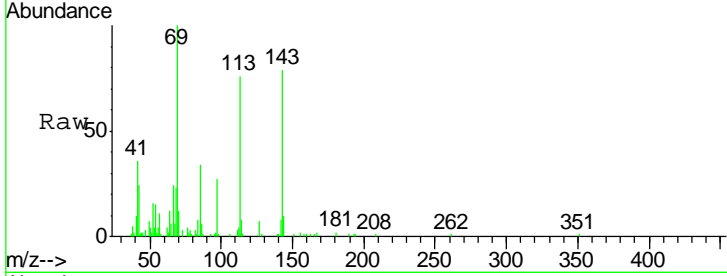




#54  
 2,4-Dinitrotoluene  
 Concen: 0.01 ng/ul  
 RT: 15.02 min Scan# 2074  
 Delta R.T. -0.12 min  
 Lab File: BG023456.D  
 Acq: 4 Aug 2016 17:47

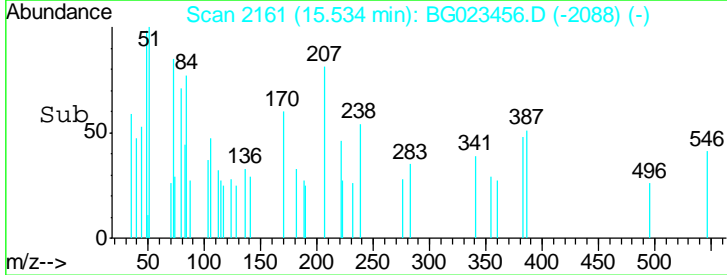
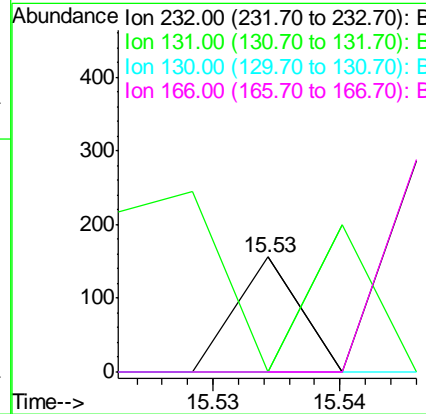
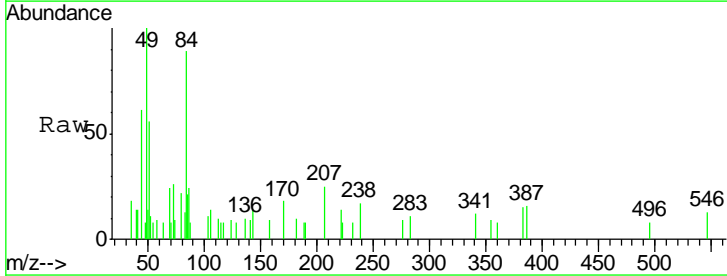
Instrument :  
 BNA\_G  
 ClientSampled :  
 SBLK46

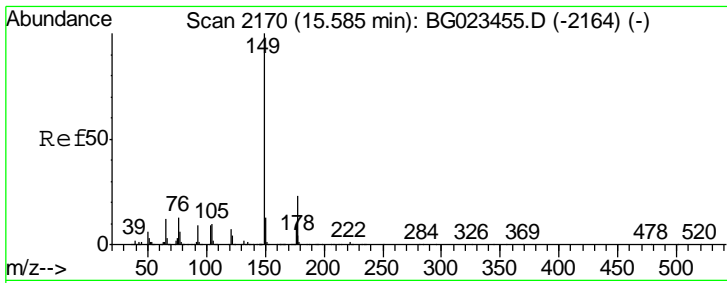
Tgt Ion	Resp	Lower	Upper
165	100		
63	257.5	25.7	38.5#
182	0.0	2.1	3.1#



#55  
 2,3,4,6-Tetrachlorophenol  
 Concen: 0.01 ng/ul  
 RT: 15.53 min Scan# 2161  
 Delta R.T. 0.13 min  
 Lab File: BG023456.D  
 Acq: 4 Aug 2016 17:47

Tgt Ion	Resp	Lower	Upper
232	100		
131	0.0	34.8	52.2#
130	0.0	2.2	3.2#
166	0.0	23.8	35.6#

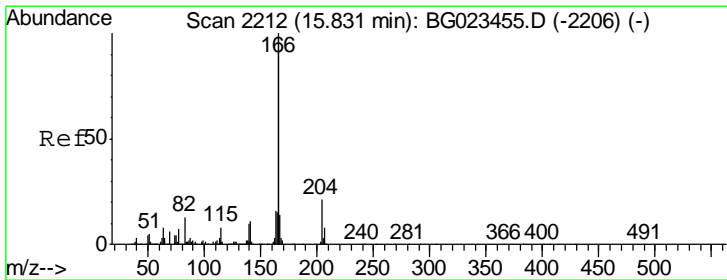
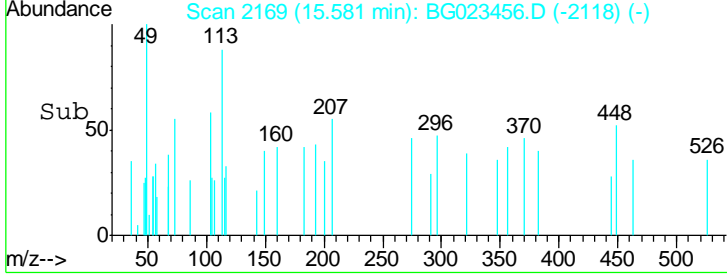
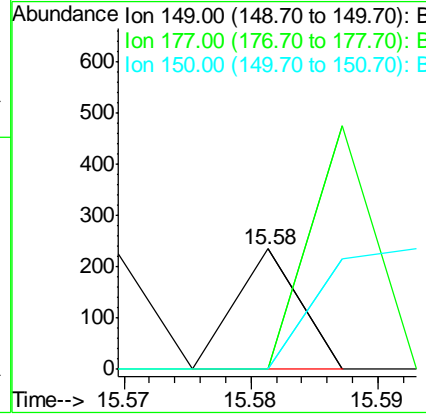
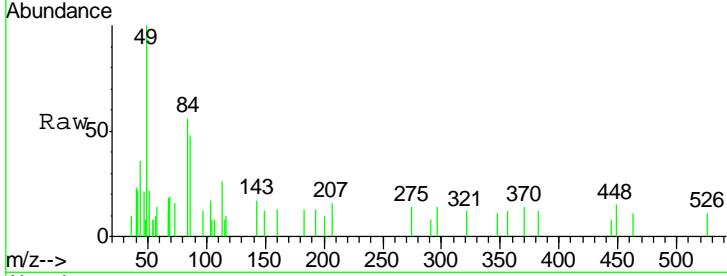




#56  
 Diethylphthalate  
 Concen: 0.00 ng/ul  
 RT: 15.58 min Scan# 2169  
 Delta R.T. -0.00 min  
 Lab File: BG023456.D  
 Acq: 4 Aug 2016 17:47

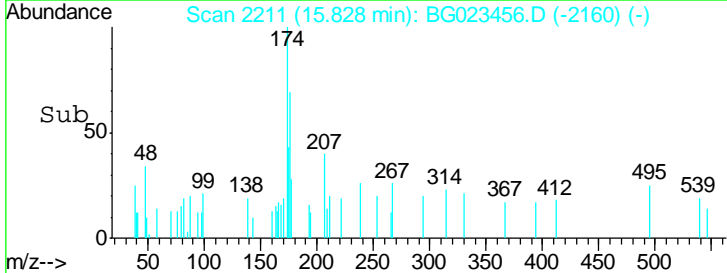
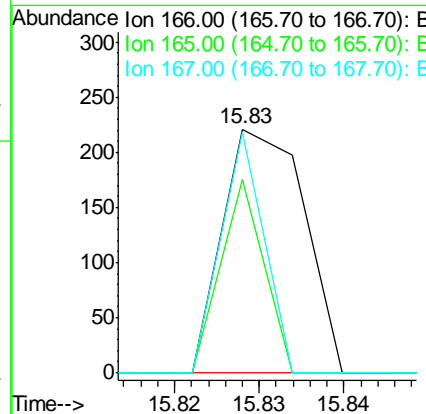
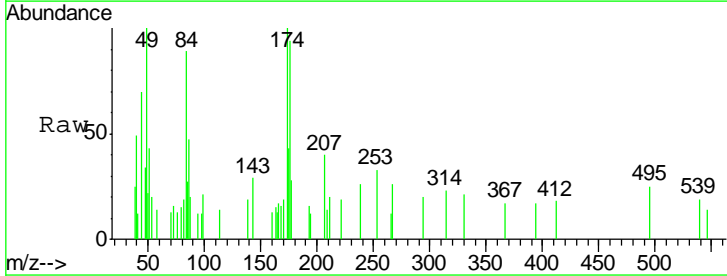
Instrument :  
 BNA\_G  
 ClientSampled :  
 SBLK46

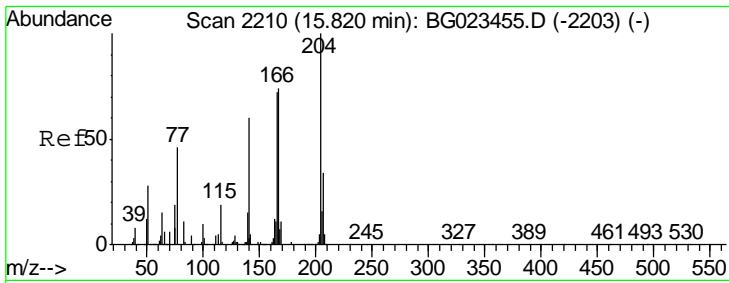
Tgt Ion	Resp	Lower	Upper
149	100		
177	0.0	17.4	26.2#
150	0.0	9.6	14.4#



#58  
 Fluorene  
 Concen: 0.01 ng/ul  
 RT: 15.83 min Scan# 2211  
 Delta R.T. -0.00 min  
 Lab File: BG023456.D  
 Acq: 4 Aug 2016 17:47

Tgt Ion	Resp	Lower	Upper
166	100		
165	79.2	80.3	120.5#
167	98.6	10.3	15.5#

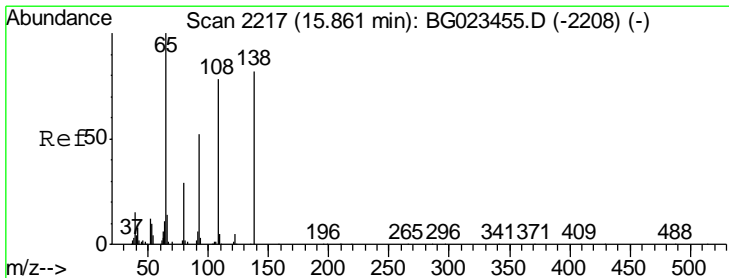
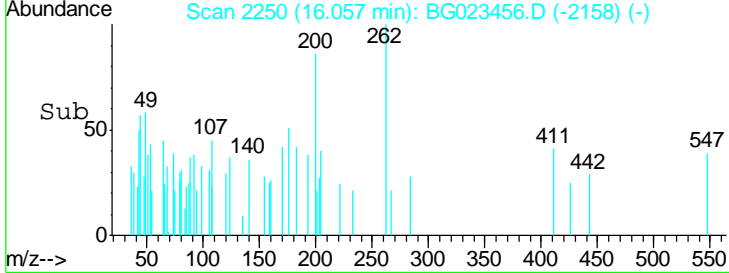
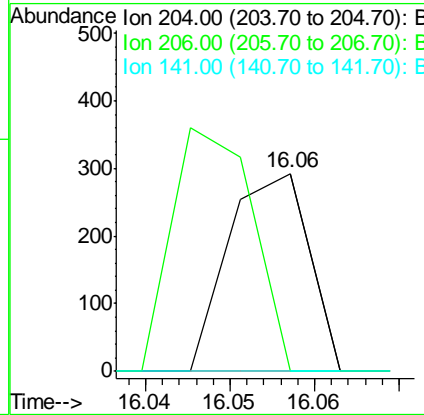
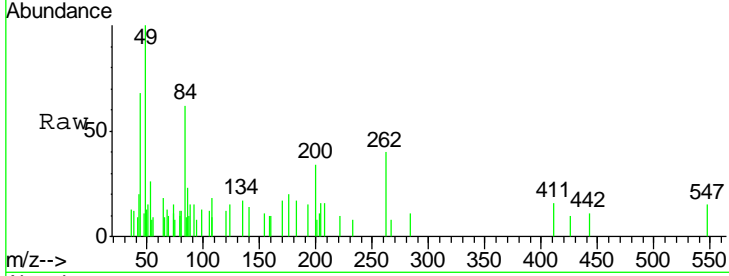




#59  
 4-Chlorophenyl-phenylether  
 Concen: 0.01 ng/ul  
 RT: 16.06 min Scan# 2250  
 Delta R.T. 0.24 min  
 Lab File: BG023456.D  
 Acq: 4 Aug 2016 17:47

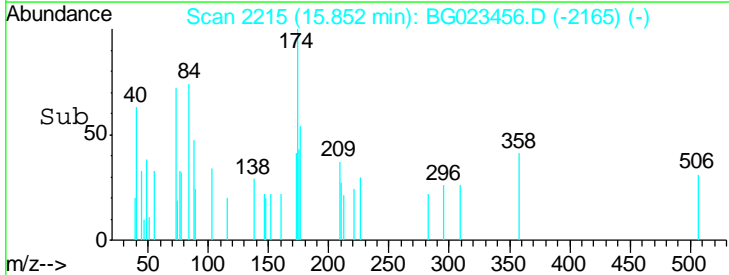
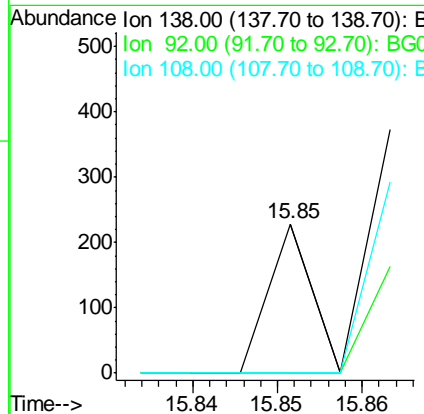
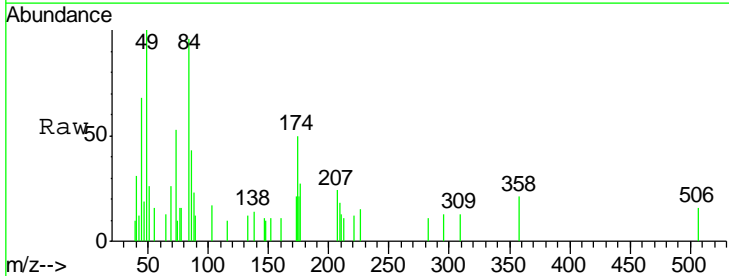
Instrument :  
 BNA\_G  
 ClientSampled :  
 SBLK46

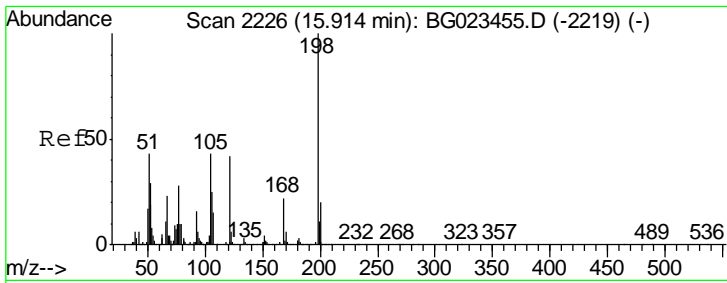
Tgt Ion	Resp	Lower	Upper
204	100		
206	0.0	27.4	41.2#
141	0.0	47.1	70.7#



#60  
 4-Nitroaniline  
 Concen: 0.01 ng/ul  
 RT: 15.85 min Scan# 2215  
 Delta R.T. -0.01 min  
 Lab File: BG023456.D  
 Acq: 4 Aug 2016 17:47

Tgt Ion	Resp	Lower	Upper
138	100		
92	0.0	39.0	58.4#
108	0.0	49.2	73.8#

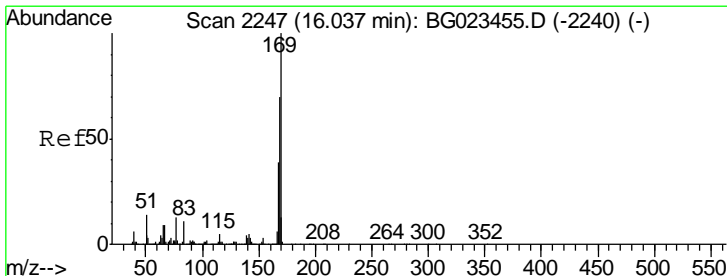
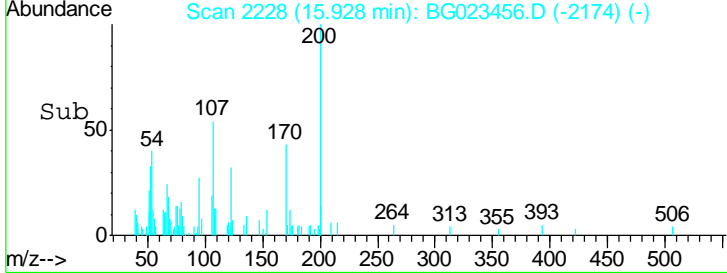
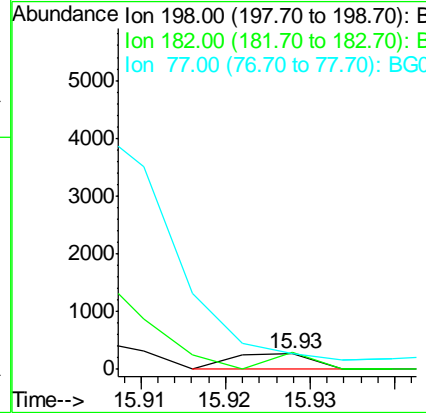
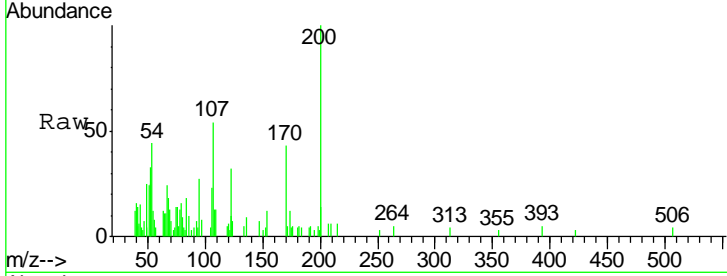




#63  
 4,6-Dinitro-2-methylphenol  
 Concen: 0.03 ng/ul  
 RT: 15.93 min Scan# 2228  
 Delta R.T. 0.01 min  
 Lab File: BG023456.D  
 Acq: 4 Aug 2016 17:47

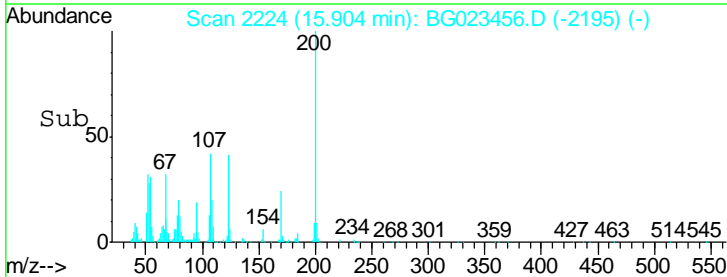
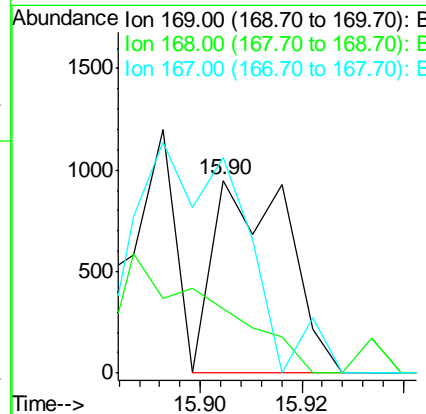
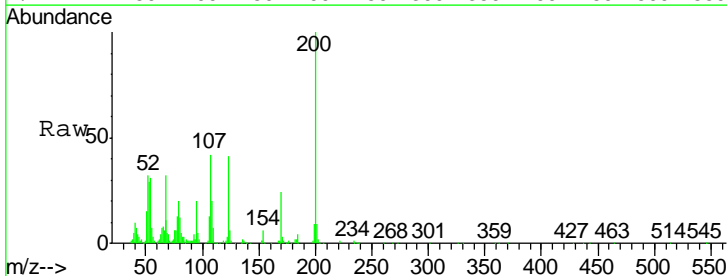
**Instrument :**  
 BNA\_G  
**ClientSampled :**  
 SBLK46

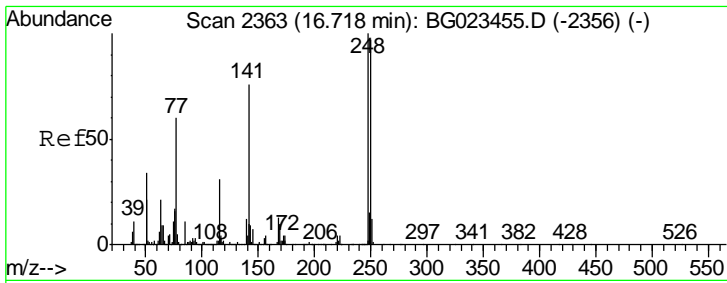
Tgt Ion	Resp	Lower	Upper
198	184		
182	107.8	4.2	6.2#
77	100.7	16.7	25.1#



#64  
 N-Nitrosodiphenylamine  
 Concen: 0.04 ng/ul  
 RT: 15.90 min Scan# 2224  
 Delta R.T. -0.13 min  
 Lab File: BG023456.D  
 Acq: 4 Aug 2016 17:47

Tgt Ion	Resp	Lower	Upper
169	979		
168	33.4	59.0	88.6#
167	111.5	30.6	46.0#

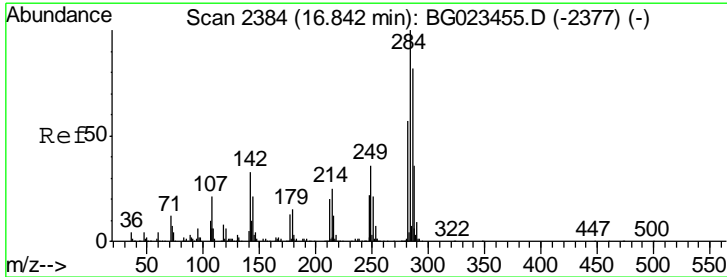
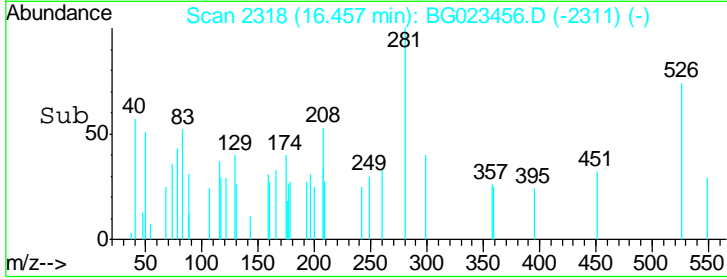
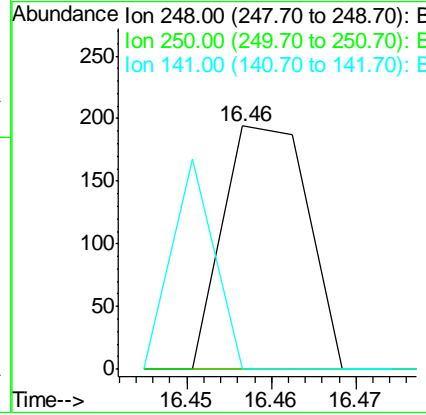
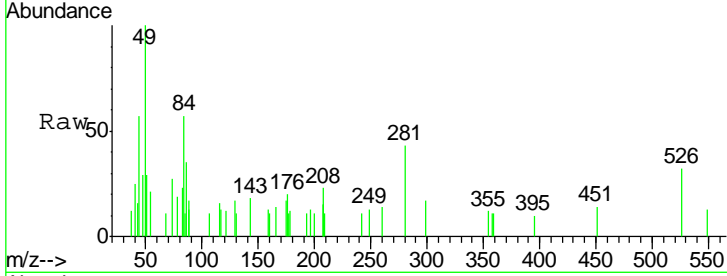




#65  
 4-Bromophenyl-phenylether  
 Concen: 0.01 ng/ul  
 RT: 16.46 min Scan# 2318  
 Delta R.T. -0.26 min  
 Lab File: BG023456.D  
 Acq: 4 Aug 2016 17:47

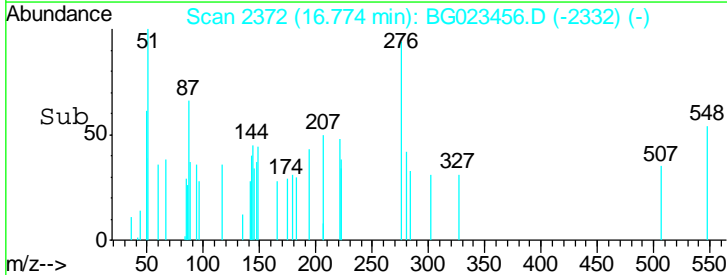
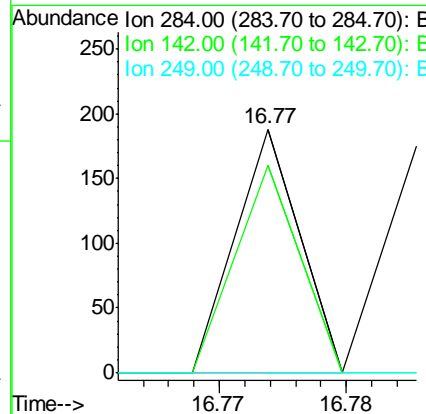
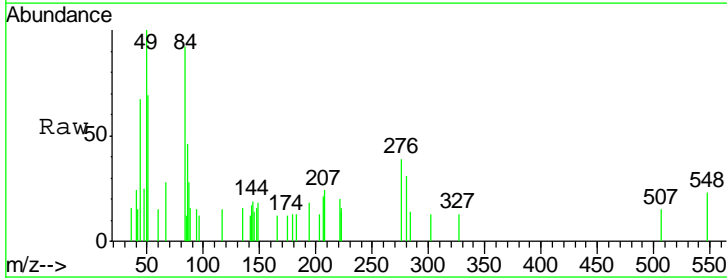
Instrument :  
 BNA\_G  
 ClientSampled :  
 SBLK46

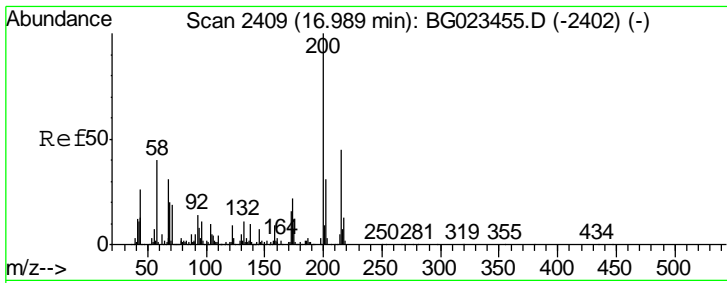
Tgt Ion	Resp	Lower	Upper
248	100		
250	0.0	76.6	114.8#
141	0.0	61.8	92.6#



#66  
 Hexachlorobenzene  
 Concen: 0.01 ng/ul  
 RT: 16.77 min Scan# 2372  
 Delta R.T. -0.07 min  
 Lab File: BG023456.D  
 Acq: 4 Aug 2016 17:47

Tgt Ion	Resp	Lower	Upper
284	100		
142	85.1	27.8	41.8#
249	0.0	24.4	36.6#

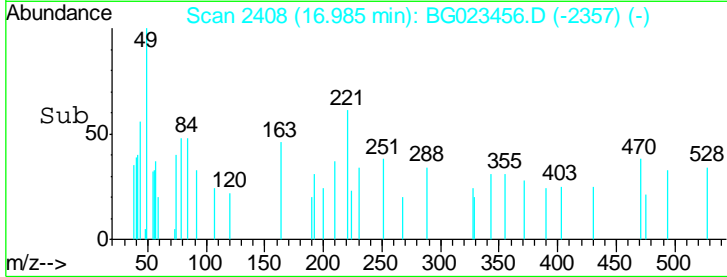
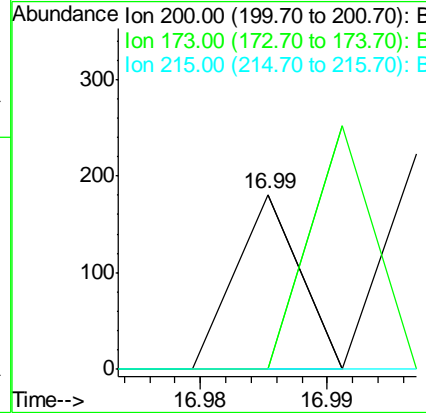
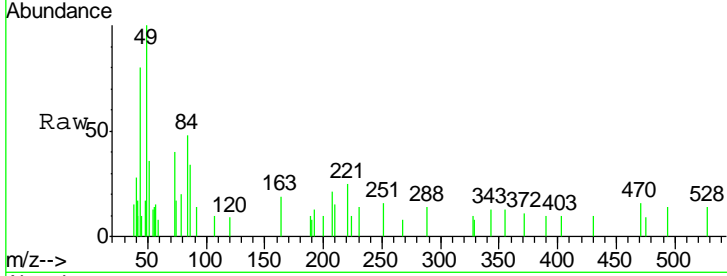




#67  
 Atrazine  
 Concen: 0.01 ng/ul  
 RT: 16.99 min Scan# 2408  
 Delta R.T. -0.00 min  
 Lab File: BG023456.D  
 Acq: 4 Aug 2016 17:47

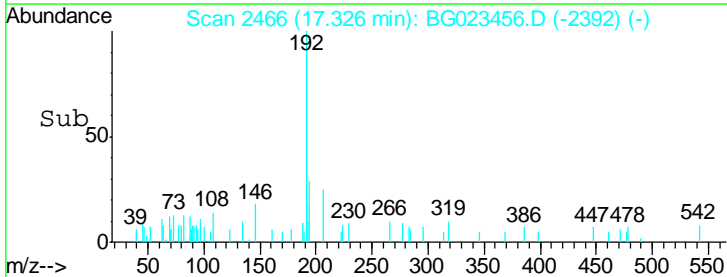
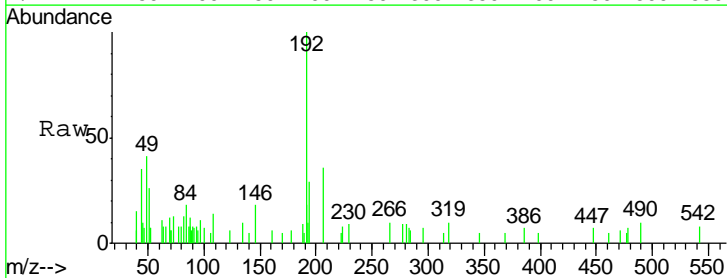
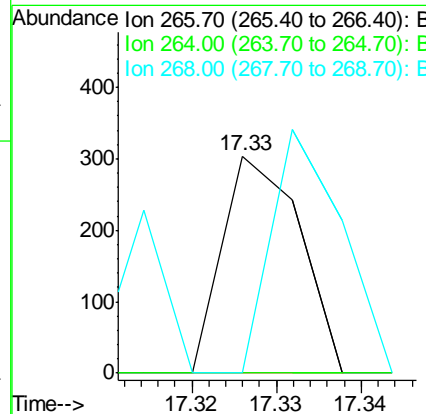
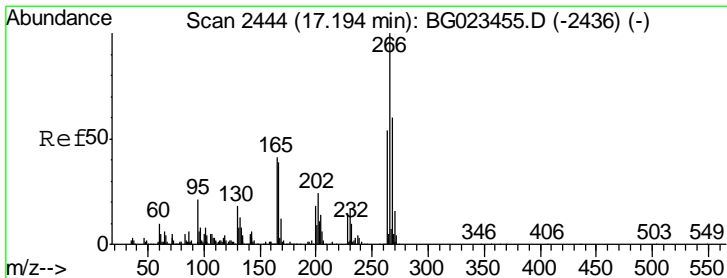
Instrument :  
 BNA\_G  
 ClientSampled :  
 SBLK46

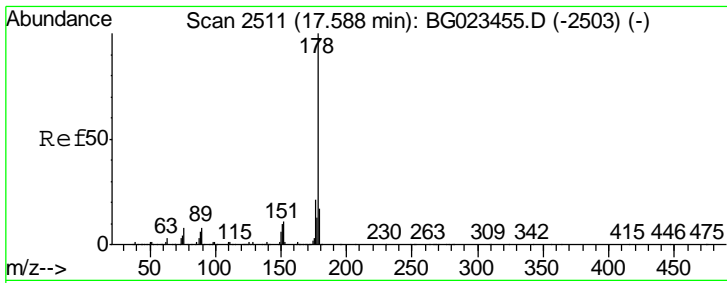
Tgt Ion	Ratio	Lower	Upper
200	100		
173	0.0	21.0	31.6#
215	0.0	37.9	56.9#



#68  
 Pentachlorophenol  
 Concen: 0.03 ng/ul  
 RT: 17.33 min Scan# 2466  
 Delta R.T. 0.13 min  
 Lab File: BG023456.D  
 Acq: 4 Aug 2016 17:47

Tgt Ion	Ratio	Lower	Upper
266	100		
264	0.0	54.7	82.1#
268	0.0	57.8	86.8#

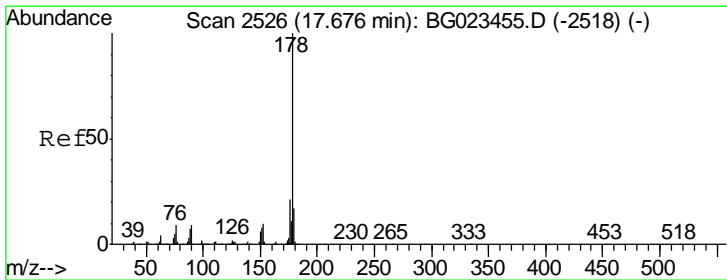
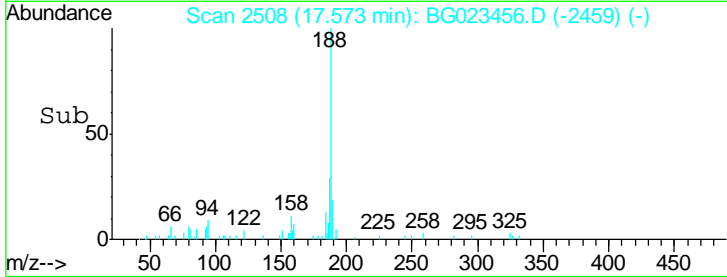
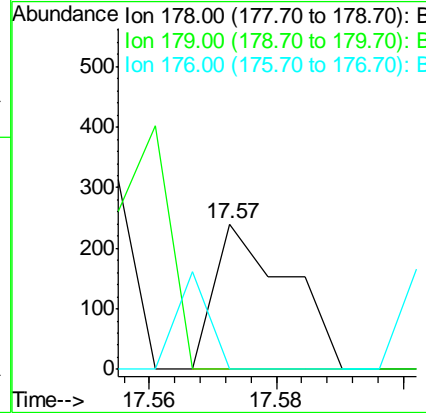
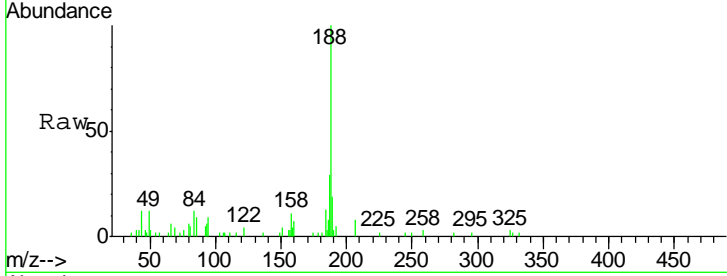




#69  
 Phenanthrene  
 Concen: 0.00 ng/ul  
 RT: 17.57 min Scan# 2508  
 Delta R.T. -0.02 min  
 Lab File: BG023456.D  
 Acq: 4 Aug 2016 17:47

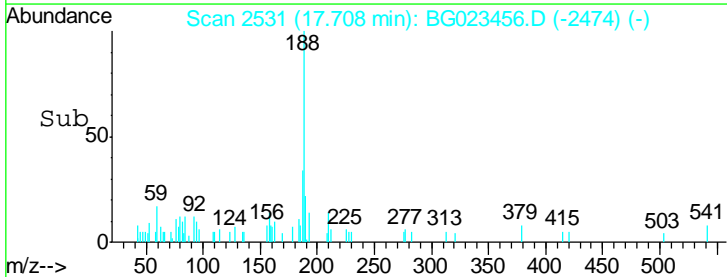
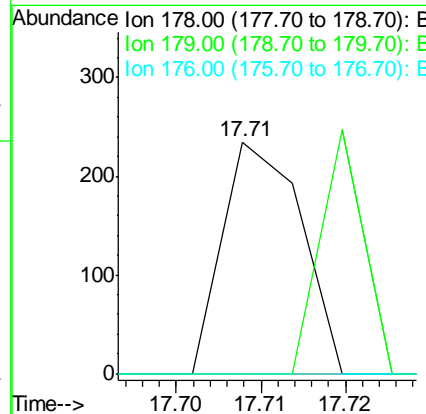
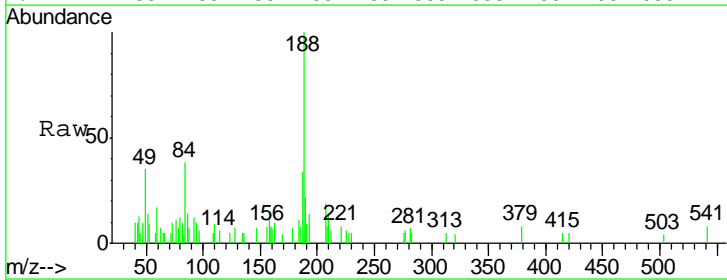
Instrument :  
 BNA\_G  
 ClientSampled :  
 SBLK46

Tgt Ion	Resp	Lower	Upper
178	100		
179	0.0	12.9	19.3#
176	0.0	15.8	23.8#

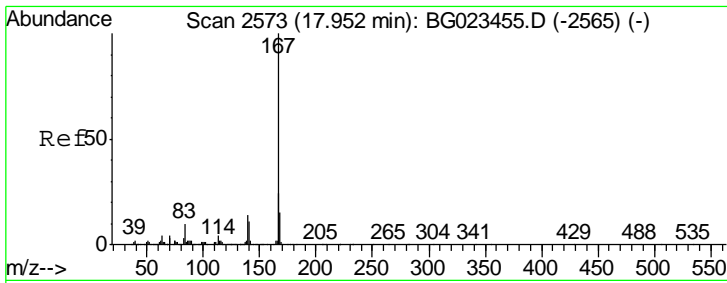


#71  
 Anthracene  
 Concen: 0.00 ng/ul  
 RT: 17.71 min Scan# 2531  
 Delta R.T. 0.03 min  
 Lab File: BG023456.D  
 Acq: 4 Aug 2016 17:47

Tgt Ion	Resp	Lower	Upper
178	100		
179	0.0	12.3	18.5#
176	0.0	16.3	24.5#



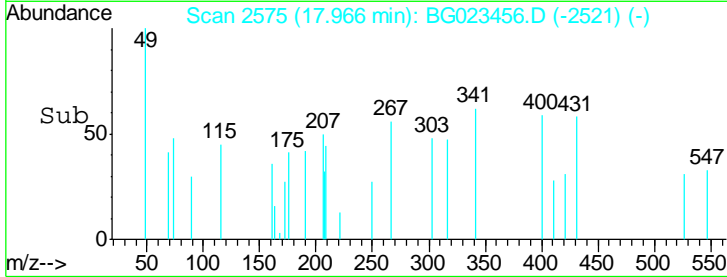
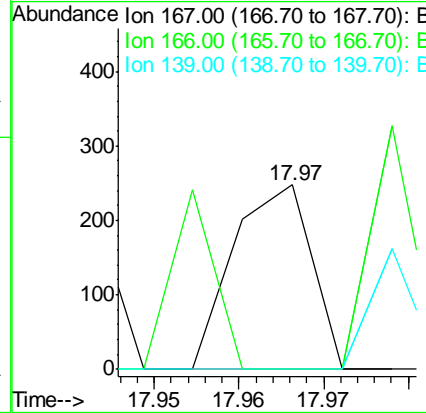
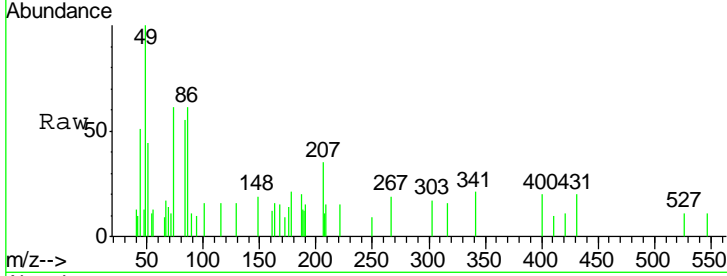




#72  
 Carbazole  
 Concen: 0.00 ng/ul  
 RT: 17.97 min Scan# 2575  
 Delta R.T. 0.01 min  
 Lab File: BG023456.D  
 Acq: 4 Aug 2016 17:47

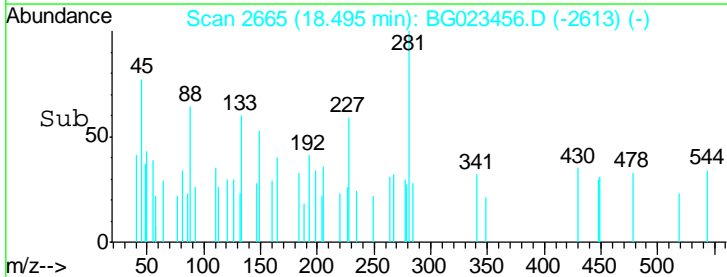
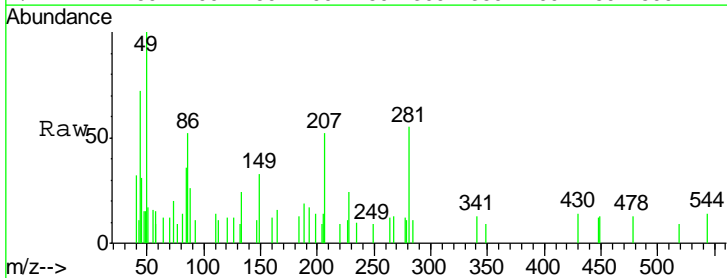
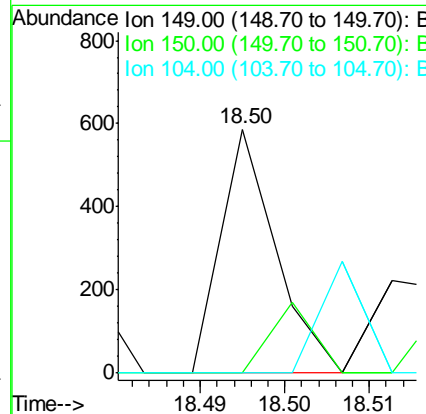
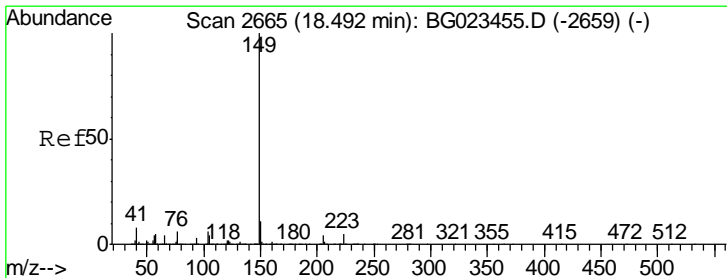
**Instrument :**  
 BNA\_G  
**ClientSampled :**  
 SBLK46

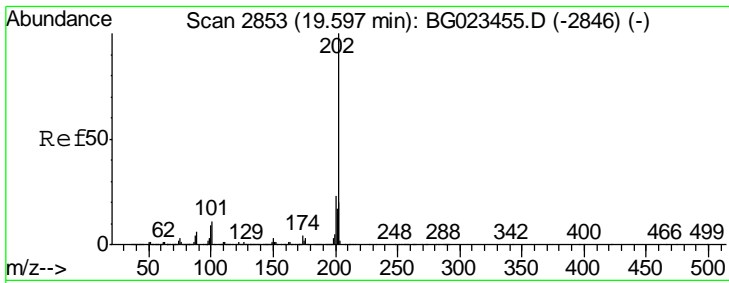
Tgt Ion	Resp	Lower	Upper
167	158		
166	0.0	19.2	28.8#
139	0.0	10.2	15.4#



#73  
 Di-n-butylphthalate  
 Concen: 0.01 ng/ul  
 RT: 18.50 min Scan# 2665  
 Delta R.T. 0.00 min  
 Lab File: BG023456.D  
 Acq: 4 Aug 2016 17:47

Tgt Ion	Resp	Lower	Upper
149	264		
150	0.0	7.1	10.7#
104	0.0	3.3	4.9#

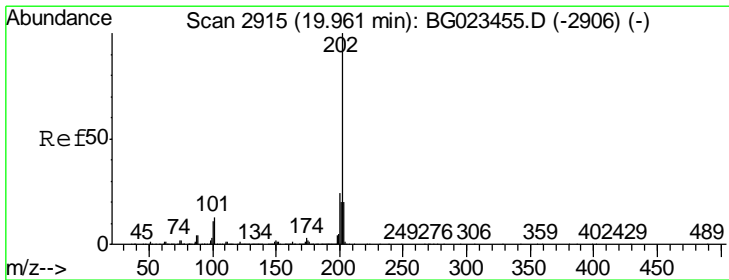
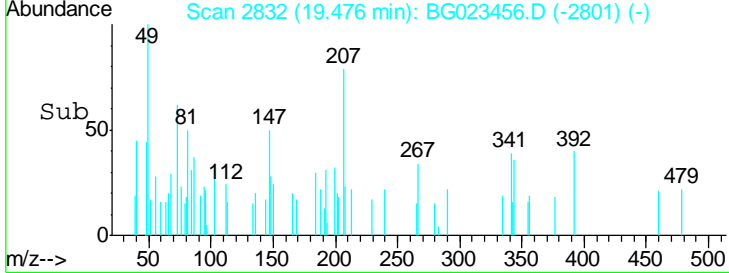
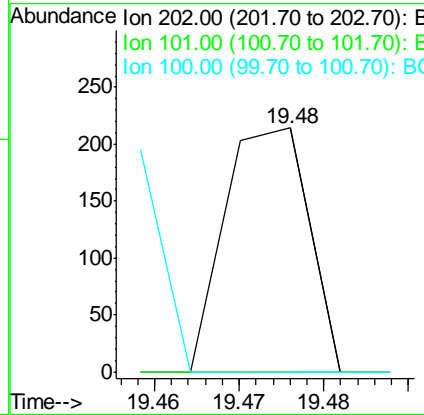
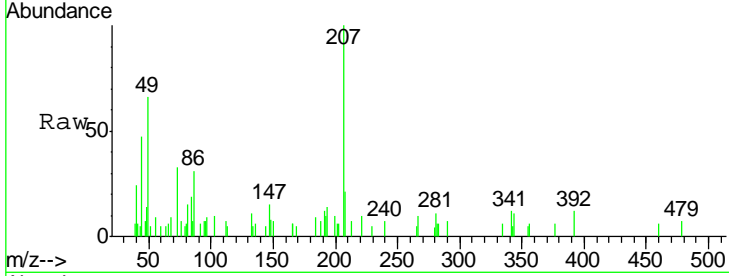




#74  
 Fluoranthene  
 Concen: 0.00 ng/ul  
 RT: 19.48 min Scan# 2832  
 Delta R.T. -0.12 min  
 Lab File: BG023456.D  
 Acq: 4 Aug 2016 17:47

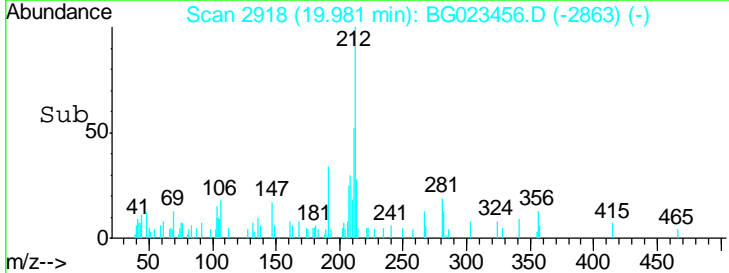
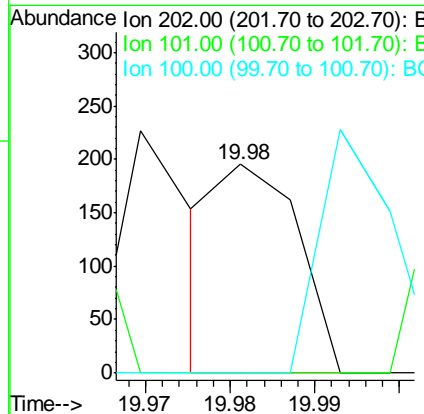
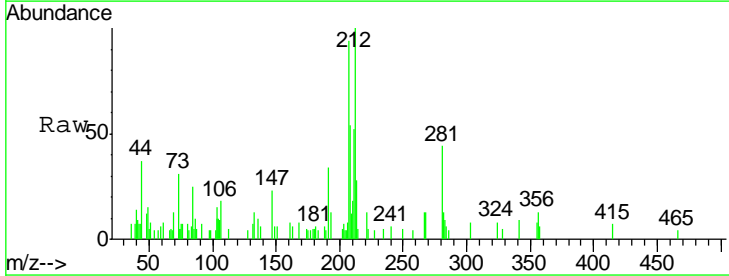
Instrument :  
 BNA\_G  
 ClientSampled :  
 SBLK46

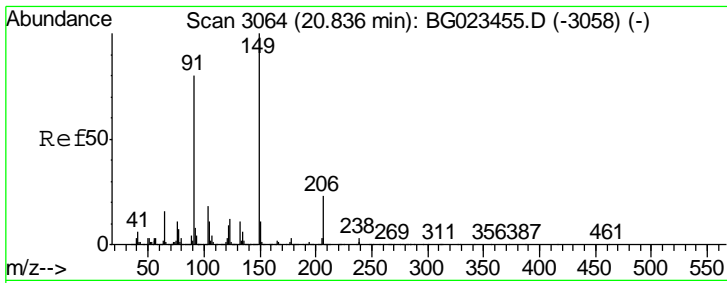
Tgt Ion	Resp	Lower	Upper
202	147		
101	0.0	10.6	16.0#
100	0.0	8.7	13.1#



#77  
 Pyrene  
 Concen: 0.76 ng/ul  
 RT: 19.98 min Scan# 2918  
 Delta R.T. 0.02 min  
 Lab File: BG023456.D  
 Acq: 4 Aug 2016 17:47

Tgt Ion	Resp	Lower	Upper
202	126		
101	0.0	12.5	18.7#
100	0.0	10.2	15.4#

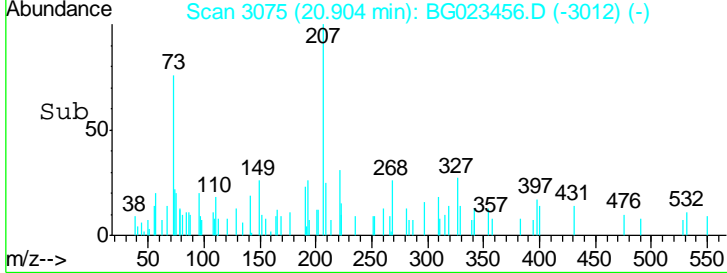
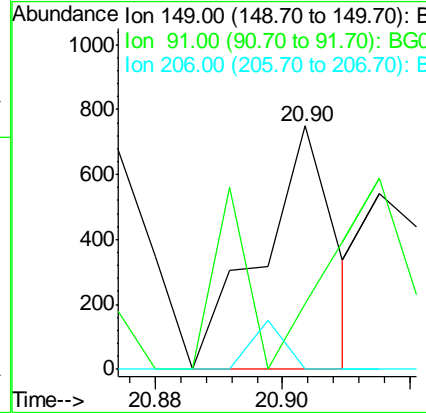
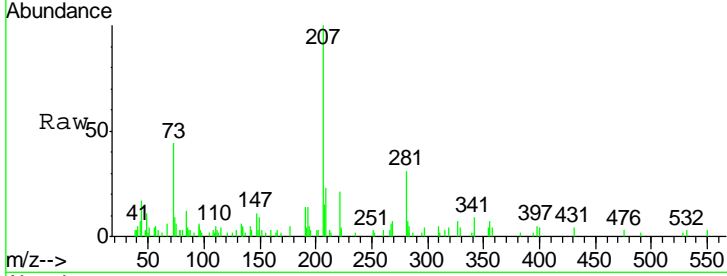




#78  
 Butylbenzylphthalate  
 Concen: 9.47 ng/ul  
 RT: 20.90 min Scan# 3075  
 Delta R.T. 0.07 min  
 Lab File: BG023456.D  
 Acq: 4 Aug 2016 17:47

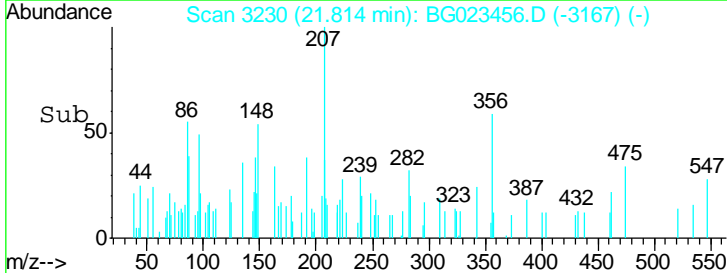
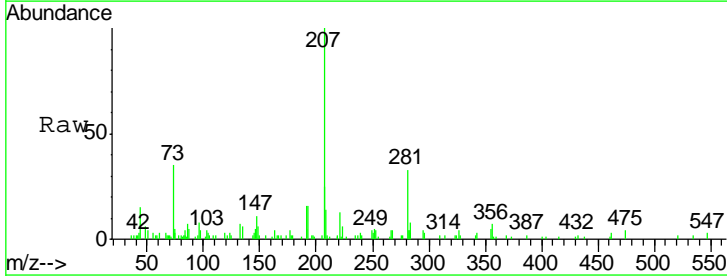
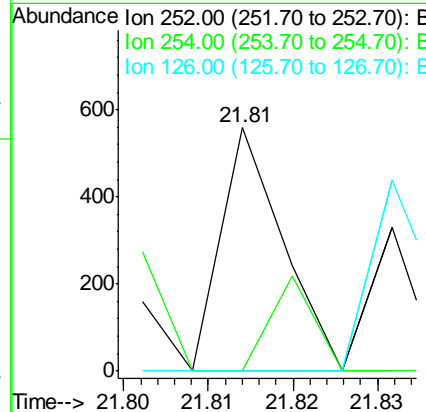
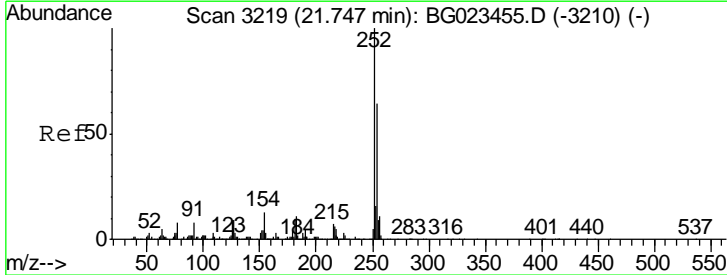
Instrument :  
 BNA\_G  
 ClientSampled :  
 SBLK46

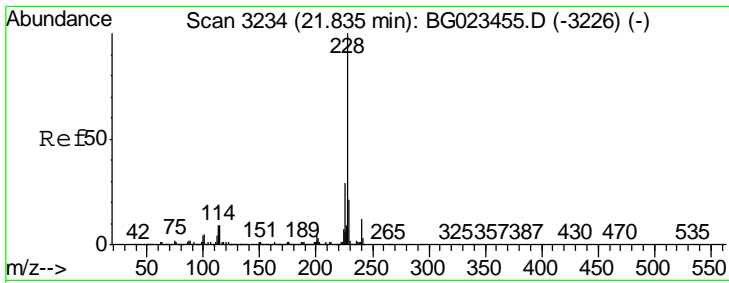
Tgt Ion	Resp	Lower	Upper
149	100		
91	27.1	54.2	81.4#
206	0.0	14.1	21.1#



#79  
 3,3'-Dichlorobenzidine  
 Concen: 5.97 ng/ul  
 RT: 21.81 min Scan# 3230  
 Delta R.T. 0.07 min  
 Lab File: BG023456.D  
 Acq: 4 Aug 2016 17:47

Tgt Ion	Resp	Lower	Upper
252	100		
254	0.0	51.4	77.2#
126	0.0	10.7	16.1#

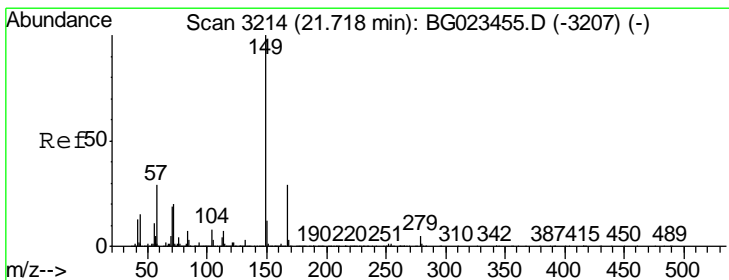
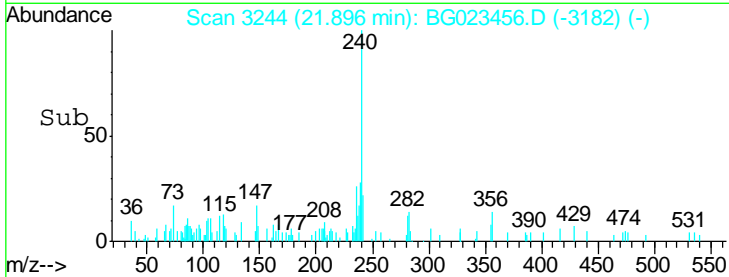
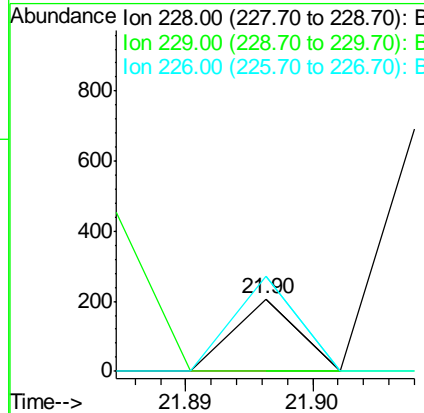
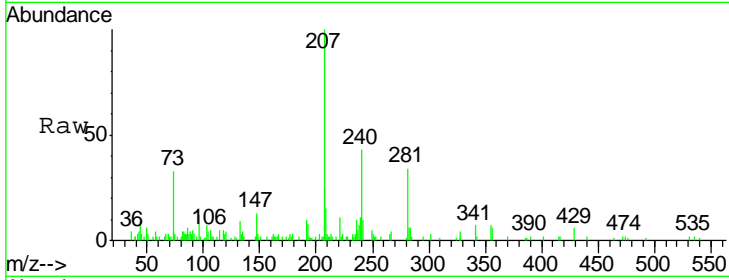




#80  
 Benzo(a)anthracene  
 Concen: 0.48 ng/ul  
 RT: 21.90 min Scan# 3244  
 Delta R.T. 0.06 min  
 Lab File: BG023456.D  
 Acq: 4 Aug 2016 17:47

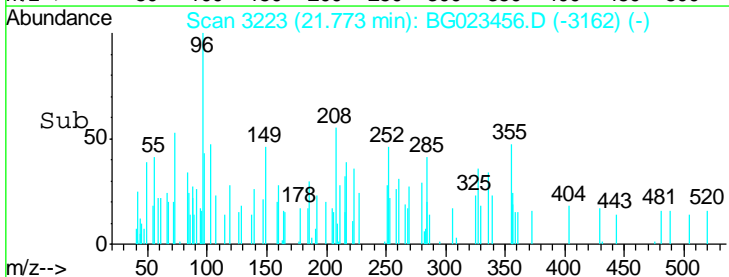
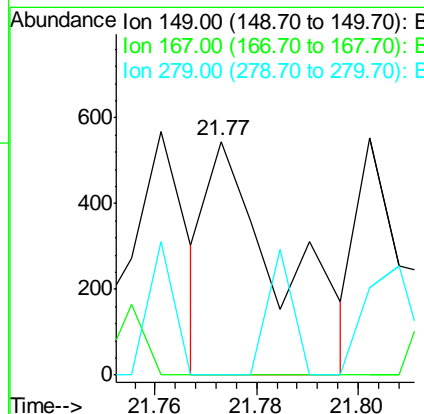
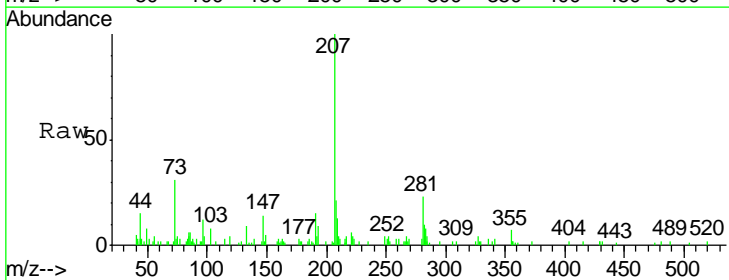
Instrument :  
 BNA\_G  
 ClientSampled :  
 SBLK46

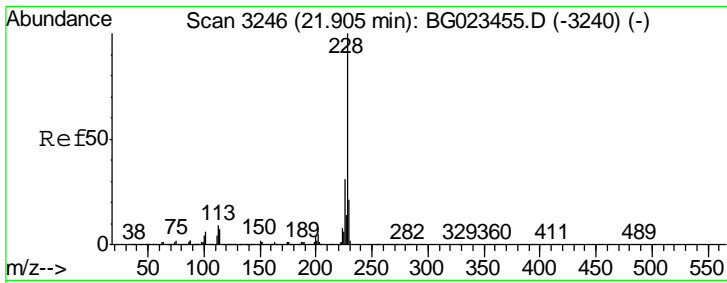
Tgt Ion	Resp	Lower	Upper
228	100		
229	0.0	15.4	23.2#
226	131.4	22.8	34.2#



#81  
 Bis(2-ethylhexyl)phthalate  
 Concen: 6.42 ng/ul  
 RT: 21.77 min Scan# 3223  
 Delta R.T. 0.06 min  
 Lab File: BG023456.D  
 Acq: 4 Aug 2016 17:47

Tgt Ion	Resp	Lower	Upper
149	100		
167	0.0	21.9	32.9#
279	0.0	2.9	4.3#

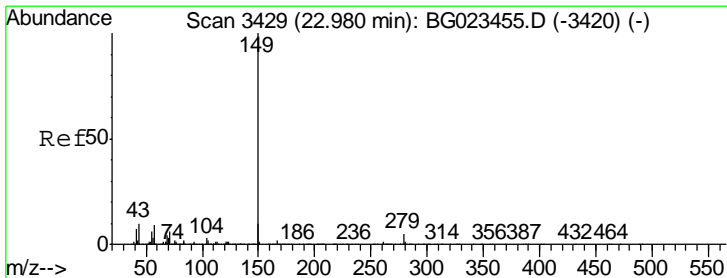
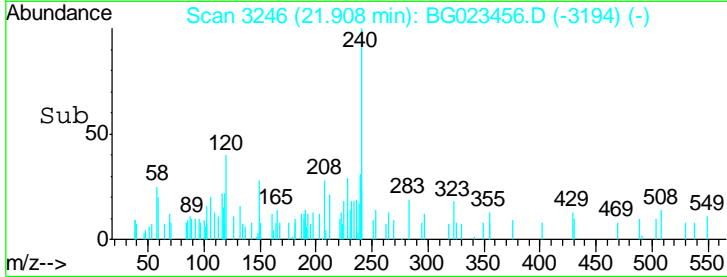
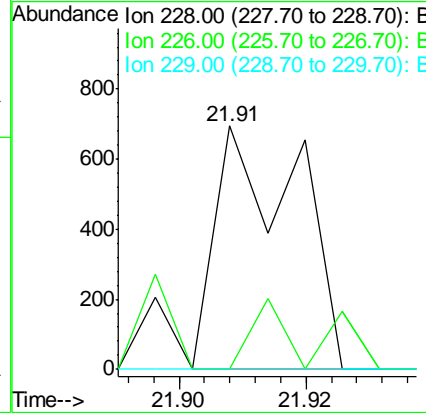
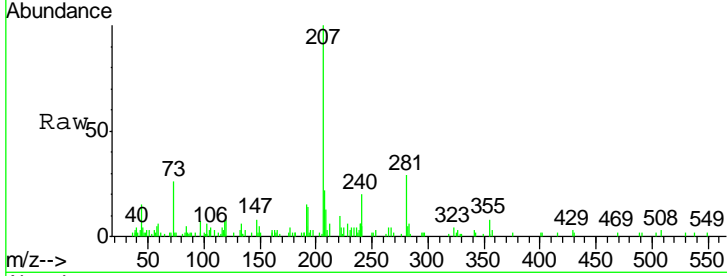




#82  
 Chrysene  
 Concen: 4.47 ng/ul  
 RT: 21.91 min Scan# 3246  
 Delta R.T. 0.00 min  
 Lab File: BG023456.D  
 Acq: 4 Aug 2016 17:47

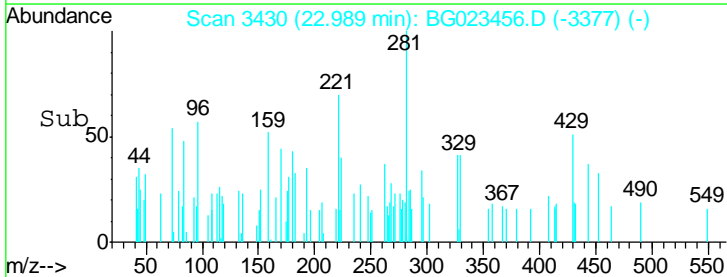
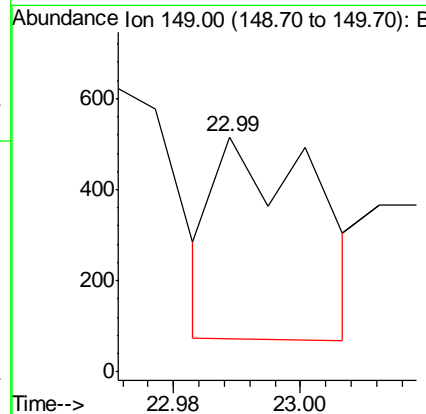
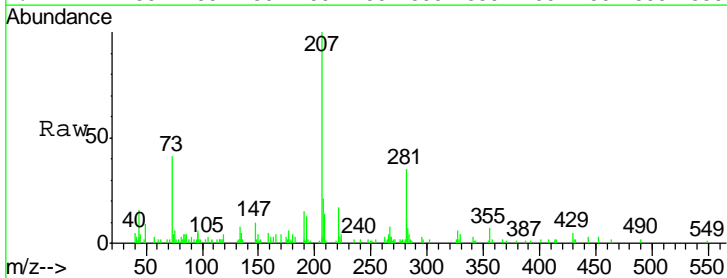
Instrument :  
 BNA\_G  
 ClientSampled :  
 SBLK46

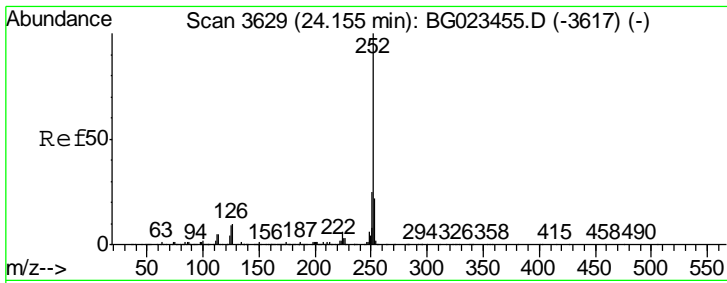
Tgt Ion	Resp	Lower	Upper
228	100		
226	0.0	24.2	36.4#
229	0.0	15.0	22.6#



#84  
 Di-n-octyl phthalate  
 Concen: 0.01 ng/ul  
 RT: 22.99 min Scan# 3430  
 Delta R.T. 0.01 min  
 Lab File: BG023456.D  
 Acq: 4 Aug 2016 17:47

Tgt Ion:149 Resp: 490

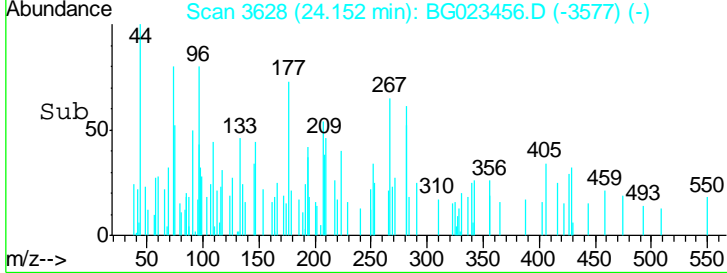
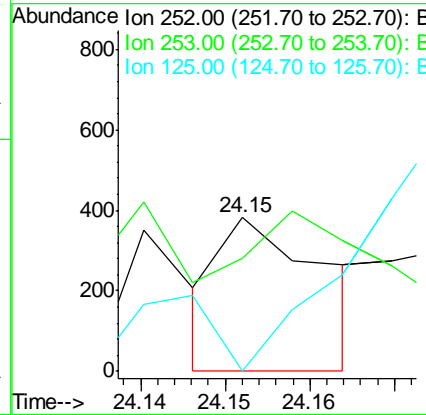
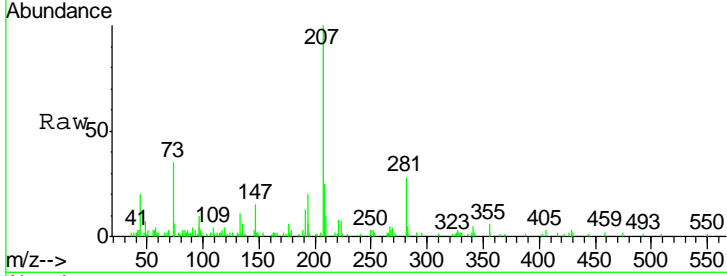




#85  
 Benzo(b)fluoranthene  
 Concen: 0.01 ng/ul  
 RT: 24.15 min Scan# 3628  
 Delta R.T. -0.00 min  
 Lab File: BG023456.D  
 Acq: 4 Aug 2016 17:47

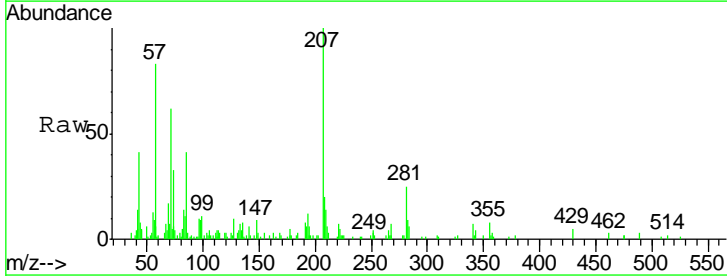
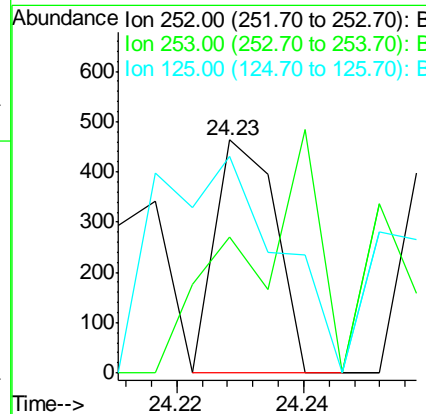
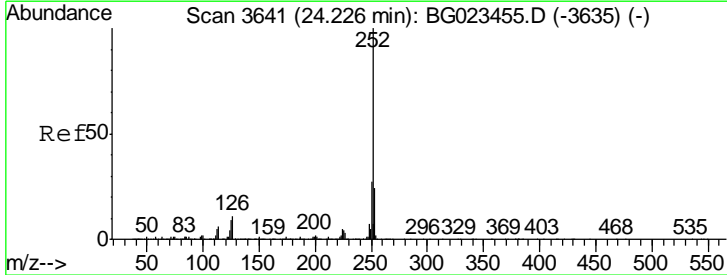
Instrument :  
 BNA\_G  
 ClientSampled :  
 SBLK46

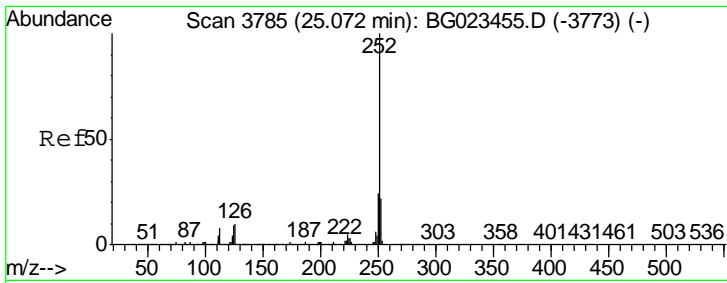
Tgt Ion	Resp	Lower	Upper
252	100		
253	73.6	18.2	27.2#
125	0.0	10.8	16.2#



#86  
 Benzo(k)fluoranthene  
 Concen: 0.01 ng/ul  
 RT: 24.23 min Scan# 3641  
 Delta R.T. 0.00 min  
 Lab File: BG023456.D  
 Acq: 4 Aug 2016 17:47

Tgt Ion	Resp	Lower	Upper
252	100		
253	58.5	15.8	23.6#
125	93.1	10.6	16.0#

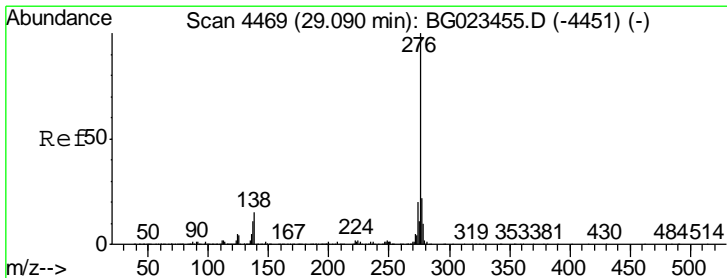
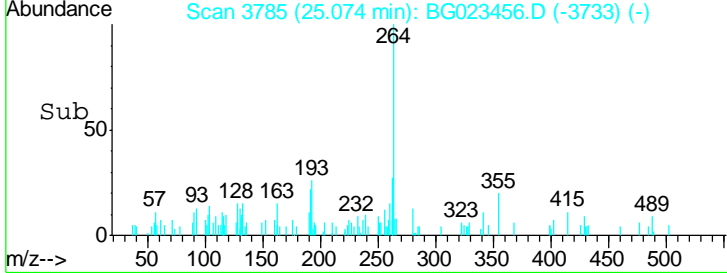
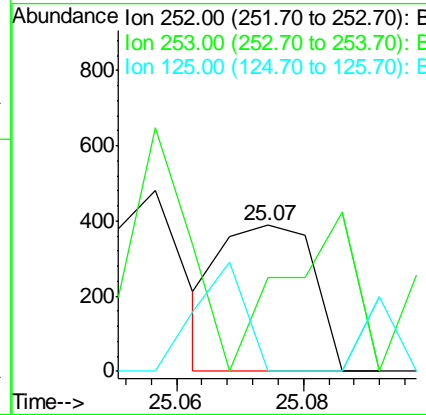
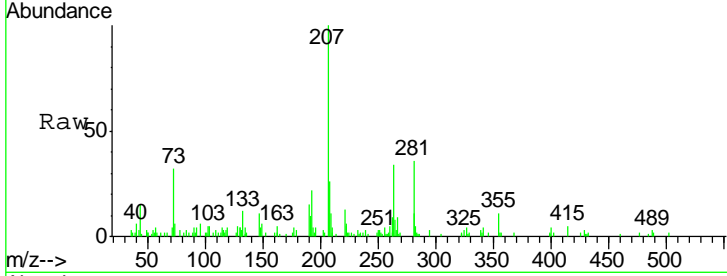




#88  
 Benzo(a)pyrene  
 Concen: 0.01 ng/ul  
 RT: 25.07 min Scan# 3785  
 Delta R.T. 0.00 min  
 Lab File: BG023456.D  
 Acq: 4 Aug 2016 17:47

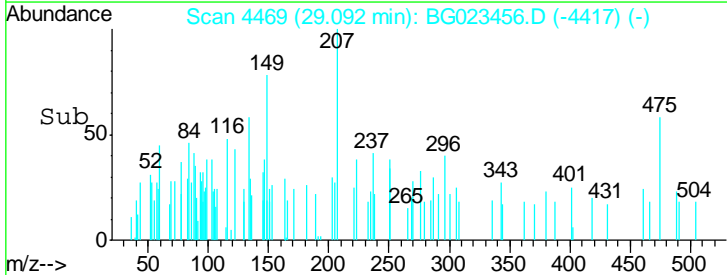
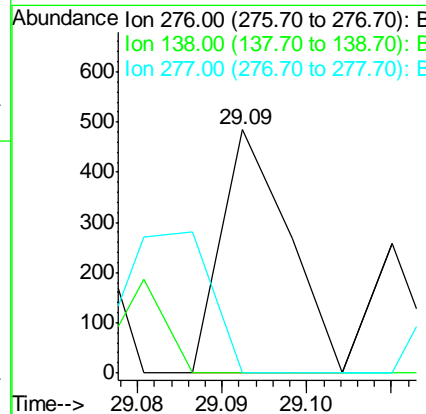
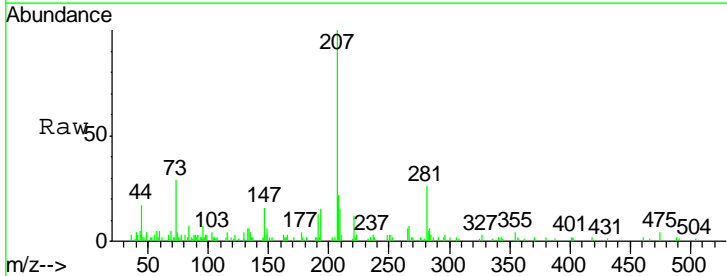
Instrument :  
 BNA\_G  
 ClientSampled :  
 SBLK46

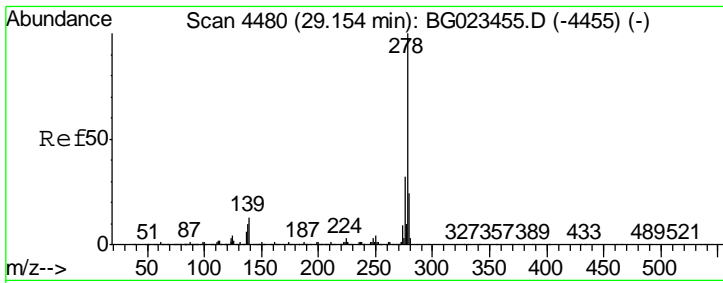
Tgt Ion	Resp	Lower	Upper
252	100		
253	64.2	19.0	28.4#
125	0.0	12.0	18.0#



#89  
 Indeno(1,2,3-cd)pyrene  
 Concen: 0.00 ng/ul  
 RT: 29.09 min Scan# 4469  
 Delta R.T. 0.00 min  
 Lab File: BG023456.D  
 Acq: 4 Aug 2016 17:47

Tgt Ion	Resp	Lower	Upper
276	100		
138	0.0	20.8	31.2#
277	0.0	17.6	26.4#

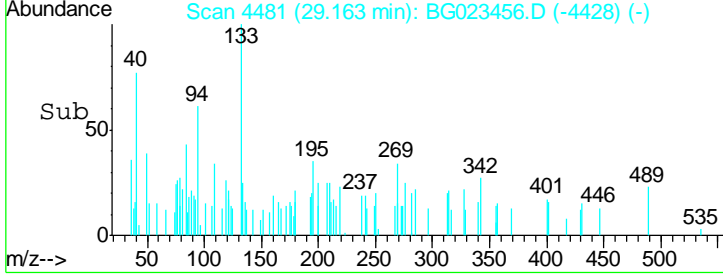
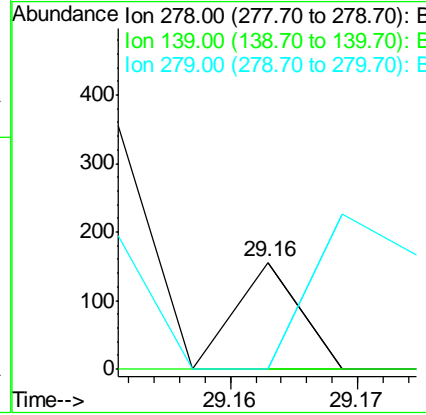
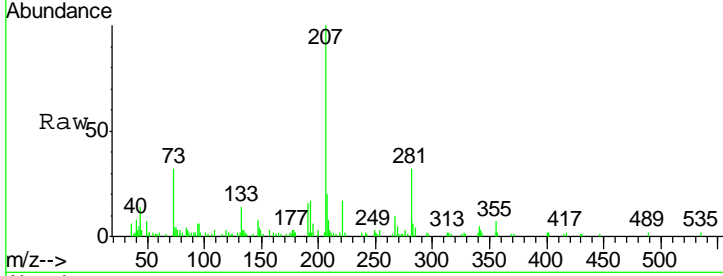




#90  
 Dibenzo(a,h)anthracene  
 Concen: 0.00 ng/ul  
 RT: 29.16 min Scan# 4481  
 Delta R.T. 0.01 min  
 Lab File: BG023456.D  
 Acq: 4 Aug 2016 17:47

**Instrument :**  
 BNA\_G  
**ClientSampled :**  
 SBLK46

Tgt Ion	Resp	Lower	Upper
278	100		
139	0.0	16.3	24.5#
279	0.0	19.1	28.7#



#91  
 Benzo(g,h,i)perylene  
 Concen: 0.00 ng/ul  
 RT: 30.30 min Scan# 4675  
 Delta R.T. -0.00 min  
 Lab File: BG023456.D  
 Acq: 4 Aug 2016 17:47

Tgt Ion	Resp	Lower	Upper
276	100		
138	0.0	22.1	33.1#
277	0.0	17.0	25.4#

